



**HAL**  
open science

## Planets, candidates, and binaries from the CoRoT/Exoplanet programme

Magali Deleuil, Suzanne Aigrain, Claire Moutou, Juan Cabrera, François Bouchy, Hans-Jörg Deeg, J. M. Almenara, Guillaume Hébrard, Alexandre Santerne, Rafael Alonso, et al.

► **To cite this version:**

Magali Deleuil, Suzanne Aigrain, Claire Moutou, Juan Cabrera, François Bouchy, et al.. Planets, candidates, and binaries from the CoRoT/Exoplanet programme: The CoRoT transit catalogue. *Astronomy and Astrophysics - A&A*, 2018, 619, pp.A97. 10.1051/0004-6361/201731068 . hal-01978436

**HAL Id: hal-01978436**

**<https://hal.science/hal-01978436>**

Submitted on 22 Aug 2020

**HAL** is a multi-disciplinary open access archive for the deposit and dissemination of scientific research documents, whether they are published or not. The documents may come from teaching and research institutions in France or abroad, or from public or private research centers.

L'archive ouverte pluridisciplinaire **HAL**, est destinée au dépôt et à la diffusion de documents scientifiques de niveau recherche, publiés ou non, émanant des établissements d'enseignement et de recherche français ou étrangers, des laboratoires publics ou privés.

# Planets, candidates, and binaries from the CoRoT/Exoplanet programme

## The CoRoT transit catalogue<sup>★,★★</sup>

M. Deleuil<sup>1</sup>, S. Aigrain<sup>2</sup>, C. Moutou<sup>1</sup>, J. Cabrera<sup>3</sup>, F. Bouchy<sup>1,4</sup>, H. J. Deeg<sup>5,6</sup>, J.-M. Almenara<sup>1,4</sup>, G. Hébrard<sup>7,8</sup>, A. Santerne<sup>1</sup>, R. Alonso<sup>6</sup>, A. S. Bonomo<sup>9</sup>, P. Bordé<sup>10</sup>, Sz. Csizmadia<sup>3</sup>, R. F. Díaz<sup>11,12</sup>, A. Erikson<sup>3</sup>, M. Fridlund<sup>13,14</sup>, D. Gandolfi<sup>15,16</sup>, E. Guenther<sup>17</sup>, T. Guillot<sup>18</sup>, P. Guterman<sup>1</sup>, S. Grziwa<sup>19</sup>, A. Hatzes<sup>17</sup>, A. Léger<sup>20</sup>, T. Mazeh<sup>21</sup>, A. Ofir<sup>23,22</sup>, M. Ollivier<sup>20</sup>, M. Pätzold<sup>19</sup>, H. Parviainen<sup>5,6</sup>, H. Rauer<sup>3,24</sup>, D. Rouan<sup>25</sup>, J. Schneider<sup>26</sup>, R. Titz-Weider<sup>3</sup>, B. Tingley<sup>27</sup>, and J. Weingrill<sup>28,29</sup>

*(Affiliations can be found after the references)*

Received 28 April 2017 / Accepted 5 February 2018

### ABSTRACT

The CoRoT space mission observed 163 665 stars over 26 stellar fields in the faint star channel. The exoplanet teams detected a total of 4123 transit-like features in the 177 454 light curves. We present the complete re-analysis of all these detections carried out with the same softwares so that to ensure their homogeneous analysis. Although the vetting process involves some human evaluation, it also involves a simple binary flag system over basic tests: detection significance, presence of a secondary, difference between odd and even depths, colour dependence, V-shape transit, and duration of the transit. We also gathered the information from the large accompanying ground-based programme carried out on the planet candidates and checked how useful the flag system could have been at the vetting stage of the candidates. From the initial list of transit-like features, we identified and separated 824 false alarms of various kind, 2269 eclipsing binaries among which 616 are contact binaries and 1653 are detached ones, 37 planets and brown dwarfs, and 557 planet candidates. We provide the catalogue of all these transit-like features, including false alarms. For the planet candidates, the catalogue gives not only their transit parameters but also the products of their light curve modelling: reduced radius, reduced semi-major axis, and impact parameter, together with a summary of the outcome of follow-up observations when carried out and their current status. For the detached eclipsing binaries, the catalogue provides, in addition to their transit parameters, a simple visual classification. Among the planet candidates whose nature remains unresolved, we estimate that eight (within an error of three) planets are still to be identified. After correcting for geometric and sensitivity biases, we derived planet and brown dwarf occurrences and confirm disagreements with *Kepler* estimates, as previously reported by other authors from the analysis of the first runs: small-size planets with orbital period less than ten days are underabundant by a factor of three in the CoRoT fields whereas giant planets are overabundant by a factor of two. These preliminary results would however deserve further investigations using the recently released CoRoT light curves that are corrected of the various instrumental effects and a homogeneous analysis of the stellar populations observed by the two missions.

**Key words.** binaries: eclipsing – techniques: photometric – space vehicles: instruments – methods: data analysis

## 1. Introduction

The CoRoT space mission (Baglin et al. 2006) operated from January 2007 to October 2012, with the two core science goals of discovering transiting exoplanets and probing the structure of stars through asteroseismology. During this period, the instrument photometrically monitored 163 665 targets distributed over 26 stellar fields in two opposite regions in the galactic plane. It collected 177 454 light curves lasting between 21 and 152 days with some targets covered in two or more separate light curves. Their analysis provided a few thousand transit events that went through a complete screening process to identify astrophysical false positives (such as eclipsing binaries mimicking a planetary transit). The transit candidates are first subjected to a detailed light curve analysis, exploiting the excellent photometric preci-

sion and long, almost uninterrupted coverage characteristic of a space-based transit survey such as CoRoT. Surviving candidates are then included in an extensive programme of ground-based follow-up observations, aiming to weed out as many of the remaining false positives as possible, and to establish the planetary nature and measure masses for genuine planets. The complete screening process for each candidate can last more than a year, but it provides a useful insight into the nature and relative frequency of the false positive scenarios.

Initially, individual papers were used to publish lists of transit candidates and eclipsing binaries, as well as with results from the follow-up observations from the fields IRa01 (Carpano et al. 2009; Moutou et al. 2009), LRc01 (Cabrera et al. 2009), LRa01 (Carone et al. 2012) SRc01 (Erikson et al. 2012), and LRa03 and SRa03 (Cavarrco et al. 2012), with a comparison between predicted and observed rates of false positives from the first three long runs (IRa01 to LRa01) given by Almenara et al. (2009). However, this procedure was discontinued in favour of collating all the candidates from all the stellar fields, and their status at the end of the follow-up programme, in a single location. This is the purpose of the present paper, which also provides a general summary of the results and a basic analysis of the statistical

\* The CoRoT space mission, launched on December 27th 2006, has been developed and is operated by CNES, with the contribution of Austria, Belgium, Brazil, ESA (RSSD and Science Programme), Germany and Spain.

\*\* Full Tables A.1, A.2, A.4–A.6 are only available at the CDS via anonymous ftp to [cdsarc.u-strasbg.fr](https://cdsarc.u-strasbg.fr) (130.79.128.5) or via <http://cdsarc.u-strasbg.fr/viz-bin/qcat?J/A+A/619/A97>

properties of the candidates and false positives. To ensure consistency, and because both the light curve analysis and the ground-based follow-up have improved over time, the fields published in the aforementioned papers are also included in this study.

The remainder of this paper is structured as follows. The strategy of observation and the stellar fields that have been observed are summarised in Sect. 2. Section 3 gives details of the methods used to detect transit events and vet them on the basis of their light curves only. The properties of the surviving candidates and the ground-based follow-up observations are reported in Sect. 4. In Sect. 5, we use the results of the follow-up programme to assess the effectiveness of the candidate vetting based on the light curves only. Candidates whose nature remains unsolved are discussed in Sect. 6, while Sect. 7 presents some very simplified estimates of the occurrence of different kinds of planets based on the CoRoT results, and a comparison to published planet occurrence results. Our summary and conclusions are given in Sect. 8.

## 2. The CoRoT exoplanet mission profile

A complete description of the mission profile and observations could be found in [Baglin et al. \(2016\)](#) but to make reading easier, we provide a quick description in the following subsections.

### 2.1. Photometry in the exoplanet channel

CoRoT's focal plane was equipped with four CCDs, each covering  $1.3 \times 1.3^\circ$ . The exoplanet and seismology observations, which targeted stars of very different brightnesses, took place side by side, with two CCDs dedicated to each of the scientific objectives. The breakdown of the first data processing unit (DPU1), which occurred in March 2009, caused the loss of one CCD in each of the exoplanet and seismology channels, reducing the field of view by half. In the exoplanet channel, the satellite's on board processing and telemetry capacity enabled the observation of up to 6000 stars per CCD. Each was assigned a pixelised photometric aperture at the start of each run, which was selected automatically from a library of 254 pre-defined masks, so as to optimise the signal to noise ratio of the integrated flux ([Llebarria & Guterman 2006](#)). For these stars, photometry was carried out on board and only light curves were downloaded to Earth. In addition, twenty  $10 \times 15$  pixel windows were used on each CCD to provide sky reference images and monitor the background level. A further 80 such windows, known as imagettes, were assigned to selected targets of interest, and were downloaded as pixel-level data to enable a finer photometric analysis on the ground. Nominally, the targets in the exoplanet channel have magnitude  $11 \leq r \leq 16$ , but a number of brighter stars were also observed, despite being saturated. Most of these were assigned an imagette to enable their photometry to be optimised on the ground.

A prism was located in the optical path of CoRoT's exoplanet channel, so that each star produced a "mini-spectrum" on the focal plane. For stars with magnitude  $r \leq 15$ , the photometric aperture was divided along detector column boundaries into three regions corresponding approximately to the red, green and blue parts of the visible spectrum, and three-colour light curves were extracted and transmitted to Earth. These could then be summed together on the ground to give a "white" light curve. For stars with  $r > 15$ , only white light curves were extracted and no colour information is available.

### 2.2. Observation programme

The target fields accessible to CoRoT were restricted to two circles of radius  $\sim 10^\circ$  located in the Ecliptic plane and separated by  $180^\circ$ , known as the CoRoT continuous viewing zones (CVZs) or CoRoT Eyes. Within the CVZs, continuous observations for up to nearly six months were possible while maintaining the amount of light scattered by the Earth hitting the detector at or below an acceptable level. The two CVZs were centred on zero declination and right ascension  $6^{\text{h}}50^{\text{m}}$  and  $18^{\text{h}}50^{\text{m}}$ , corresponding approximately to the Galactic anti-centre and centre directions, respectively. The telescope switched between those two directions twice a year (in April and October).

At the beginning of the mission, the observations mainly consisted of one long run (LR), lasting about 140 days, and one shorter run (SR), lasting between 20 and 30 days, per half-year. The exact duration and the number of pointings per year were flexible, however, and were adapted later in the mission to account for the evolution of the scientific requirements of both the exoplanet and the stellar physics programmes. After the break-down of DPU1, the observation strategy was changed, resulting in two runs of intermediate duration per six-month season, to compensate for the lower star counts per pointing. This flexibility also made it possible to re-observe the same field after few years. This was done, for example, in January 2012, returning to the field in which the transiting super-Earth CoRoT-7b was initially discovered in 2008 ([Léger et al. 2009](#)). This enabled a more precise determination of that planet's radius by scheduling simultaneous observations with CoRoT and HARPS ([Barros et al. 2014](#); [Haywood et al. 2014](#)). Similarly, the SRc03 pointing was designed to re-observe a single transit of CoRoT-9b ([Deeg et al. 2010](#)). Consequently, it lasted only five days, and only 652 targets were effectively photometrically measured, making it unsuitable for transit searches but sufficient to secure simultaneous Spitzer observations and further update the CoRoT-9b physical parameters ([Bonomo et al. 2017](#); [Lecavelier des Etangs et al. 2017](#)). Although it is listed in Table 1, the SRc03 field was then excluded from this study.

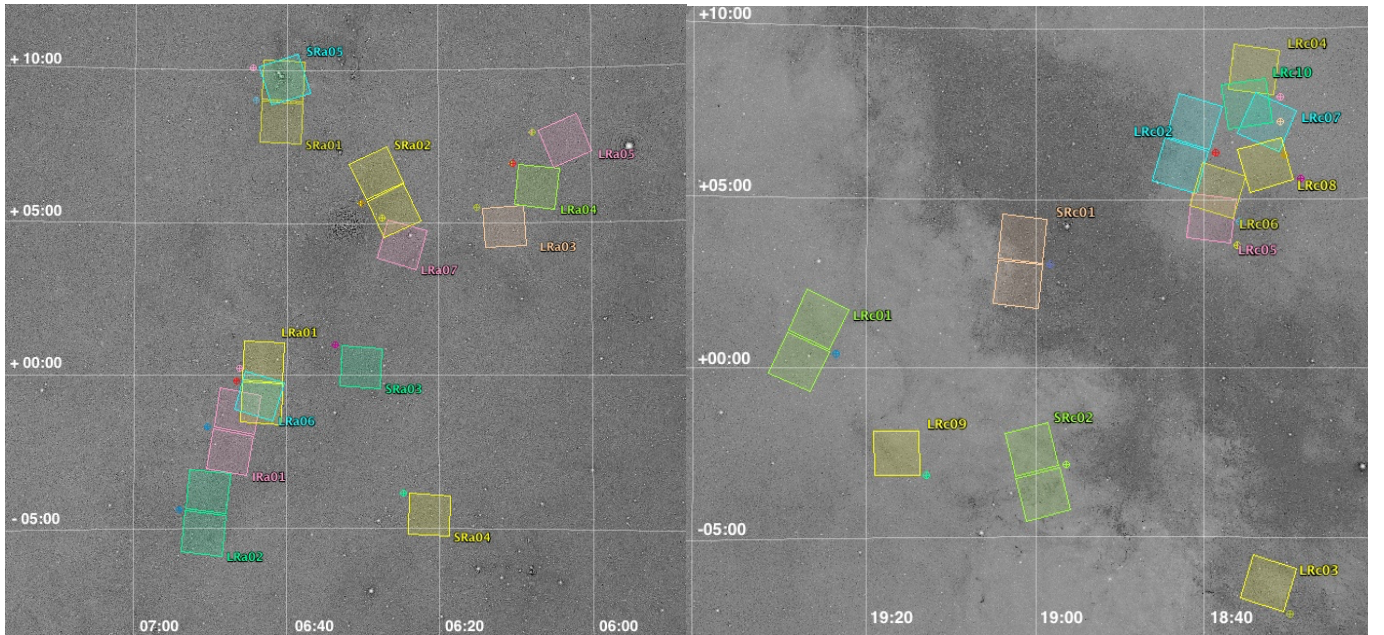
The location of all 26 exoplanet fields observed during the mission, from January 2007 to October 2012, is shown in Fig. 1, and their details are listed in Table 1. In a number of cases, there is some overlap between successive fields, albeit with a different orientation. Some targets were thus observed twice or even three times a few months or years apart, with a slightly different instrumental configuration. As a consequence, the photometric mask used to perform the on-board photometric measurements typically varied from one observation to the next, changing the contamination of the aperture (the fraction of measured flux coming from other stars in the vicinity of each target). Table 1 also provides an estimate of the median photometric precision at  $R = 14.0$ . For these estimates, we applied a one-hour duration non-linear filter to all light curves in a given run, ignoring obvious outliers flagged by the CoRoT data reduction pipeline such as SAA crossing. The scatter on each light curve was then estimated on these detrended light curves as the median from the median of a running window of three hours duration ([Hoaglin et al. 1983](#)). Finally the noise at  $R = 14.0$  was calculated as the median of the scatter of all stars in the range  $13.9\text{--}14.1$  in  $r$ -mag.

The targets observed in each exoplanet field were selected to maximise the number of main-sequence stars with spectral type F or later, and with relatively uncontaminated apertures. This involved estimating the spectral type and luminosity class of all potential CoRoT targets in the magnitude range  $10.5 \leq r \leq 16$ , as

**Table 1.** Summary of the CoRoT runs.

Field	CCD	Start date (dd/mm/aa)	Duration (days)	Overlap	Targets	Targ. # 1	Targ. # 2	Targ. # 3	Dwarfs (IV/V)	Dwarfs (V)	FGKM (IV/V)	FGKM (V)	Pipeline Version	noise @R=14 (10 <sup>-4</sup> )
IRa01	2	06/02/2007	54.3	LRa01/LRa06	9921	8216	821	884	6550	4507	4017	2683	2.1	2.73
LRa01	2	23/10/2007	131.5	IRa01/LRa06	11 448	11 448	0	0	8961	5593	4907	3150	2.1b	2.87
SRa01	2	21/03/2008	23.4	SRa05	8190	5822	2368	0	4218	2252	2173	989	2.1	3.27
SRa02	2	11/10/2008	31.8	LRa07	10 305	10 305	0	0	7990	4247	4770	2372	2.1b	4.47
LRa02	2	16/11/2008	114.7		11 448	11 448	0	0	9410	5940	6292	4048	2.1b	4.06
LRa03	1	03/10/2009	148.3		5329	5329	0	0	3862	2537	2793	1811	2.2	3.65
SRa03	1	05/03/2010	24.3		4169	4169	0	0	3038	1670	1856	950	2.2	3.19
LRa04	1	29/09/2010	77.6		4262	4262	0	0	2967	1910	2128	1354	2.2	8.10
LRa05	1	21/12/2010	90.5		4648	4648	0	0	3332	1918	2624	1466	2.2	4.39
SRa04	1	07/10/2011	52.3		5588	5588	0	0	3840	2103	3500	1886	3.0	4.00
SRa05	1	01/12/2011	38.7	SRa01	4213	4213	0	0	2452	1271	1106	514	3.0	4.27
LRa06	1	12/01/2012	76.7	LRa01/IRa01	5724	1356	3484	884	947	601	701	449	3.2	3.66
LRa07	1	04/10/2012	29.3	SRa02	4844	4390	454	0	3173	1540	1936	926	3.3	4.62
SRc01	2	13/04/2007	25.6	–	7015	7015	0	0	4484	2560	3039	1790	2.1	3.51
LRc01	2	16/05/2007	142.1		11 448	11 448	0	0	4922	2995	4632	2805	2.1	3.80
LRc02	2	15/04/2008	145	LRc06/LRc05	11 448	11 448	0	0	6239	4283	5324	3732	2.1	3.44
SRc02	2	15/09/2008	20.9		11 448	11 448	0	0	3477	1782	1765	651	2.1	3.70
LRc03	1	03/04/2009	89.2		5724	5724	0	0	3639	1839	2753	1168	2.1	4.60
LRc04	1	07/07/2009	84.2	LRc10	5724	5724	0	0	4200	2695	3987	2635	2.2	3.34
LRc05	1	08/04/2010	87.3	LRc06	5724	5724	0	0	2456	1673	1951	1332	2.2	3.38
LRc06	1	08/07/2010	77.4	LRc02/LRc05	5724	3836	1880	8	2029	1311	1709	1149	2.2	3.55
LRc07	1	08/04/2011	81.3	LRc08/LRc10	5724	3953	1771	0	1784	1182	1631	1107	3.0	4.20
SRc03	1	01/07/2011	20.9	LRc02/LRc06	652	85	559	8	0				–	–
LRc08	1	08/07/2011	83.6	LRc07/LRc10	5724	5724	0	0	2658	1793	2488	1670	3.0	4.21
LRc09	1	12/04/2012	83.6		5724	5724	0	0	2630	1780	2444	1649	3.0	3.56
LRc10	1	09/07/2012	83.5	LRc04/LRc07	5286	4618	668	0	1825	1192	1628	1130	3.2	4.18
Total					163 665	150 768	12 005	892	101 083	61 174	72 154	43 416		

**Notes.** Column 2 gives the number of CCD, Col. 6 the number of stars monitored during the pointing, Col. 7 the number of those targets that were observed in this field only, Col. 8 the number of those targets observed in this field and another, Col. 9 the number of those targets observed in this field and two others, Col. 10 the number of targets classified as dwarfs, Col. 14 the pipeline version used for the candidates and EB analysis, Col. 15 the CDPD measured at mag- $r = 14$  on a 2 h timescale (see text). The last line gives total counts without duplication for the whole mission. The SRc03 field was excluded from this study, because of its very short duration and the limited number of stars observed. LR stands for long run, SR for short run and IR for initial run. The next letter, “a” or “c”, means anticentre or centre direction respectively.


**Fig. 1.** Position of all the exoplanet fields observed by CoRoT in the Galactic anti-centre (*left*) and centre (*right*) directions.

well as the contamination within the CoRoT aperture. The latter was calculated prior to launch, taking into account fainter background contaminants and using an ideal generic photometric aperture (Lebaria & Guterman 2006). The resulting estimate of the fraction of the measured flux coming from neighbouring stars was re-evaluated later for the targets actually observed, taking into account the actual photometric mask used for the observation and the in-flight measured point-spread functions (PSFs).

Where possible, the spectral classification was initially made using dedicated, ground-based multi-colour photometric observations carried out prior to the instrument launch (Deleuil et al. 2009). However, due to the large area of the continuous viewing zones, this was possible only for some pre-selected regions corresponding to the approximate fields of the first few long runs (those planned during the mission's initial nominal lifetime of 3.5 yr, which were known before the launch).

The location of the short runs was primarily driven by the stellar physics programme, and for those we relied on existing photometric catalogues for the exoplanet target classification and selection. In some cases, such as SRa01 and SRa02, the target selection was performed without any stellar classification information. Furthermore, the mission lifetime was extended by three additional years in 2009, and again in 2012 (although this was ultimately cut short by the failure of the second data processing unit, DPU2). This led to the selection of new long and short run pointings, for which no dedicated ground-based observations were available, and once again we had to rely on published catalogue information.

The final release of the CoRoT light curves (Chaintreuil et al. 2016)<sup>1</sup> was accompanied by a complete update of the database of spectral classifications for all potential exoplanet targets in the continuous viewing zones (ExoDat), which is described in Damiani et al. (2016). To overcome the incomplete coverage of the dedicated ground-based observing programme, the final version of ExoDat is based on the PPMXL catalogue, which combines USNO-B1.0 and the 2MASS catalogues (Roeser et al. 2010). This results in a homogeneous, magnitude limited coverage of the entire continuous viewing zones. The spectral classification was performed using the same methodology as presented in Deleuil et al. (2009), but the dwarf-giant separation in the  $(J, J-K_s)$  colour-magnitude diagrams was adjusted for each field, and made use of reddening maps from the *Planck* mission. When tested against synthetic Galactic populations generated using the *Galaxia* code (Robin et al. 2003), the classification appears accurate to about half a spectral class for late type stars. Even though the uncertainties can be large for individual stars (see e.g. Gazzano et al. 2010), the classification is statistically reliable, and gives a good overview of the stellar properties in the various fields, as well as an estimate of the total number of main-sequence stars usable for transit searches in each case.

The target selection made use of the version of the spectral classification that was available in the input catalogue at the time the observations were prepared. The priorities in the selection process have evolved slightly from one run to another, but for the exoplanet programme the main criteria have been, in decreasing order of priority: 1) F, G, K, or M-type dwarfs with  $r \leq 16$ , and with a contamination rate less than 10%; 2) F, G, K or M-type dwarfs with  $r \leq 14$ , regardless of contamination rate; 3) K-type giants with  $r \leq 14$ , and with a contamination rate less than 10%; 4) A-type dwarfs with  $r \leq 14$ , and with a contamination rate less than 10%. For the target selection process, stars

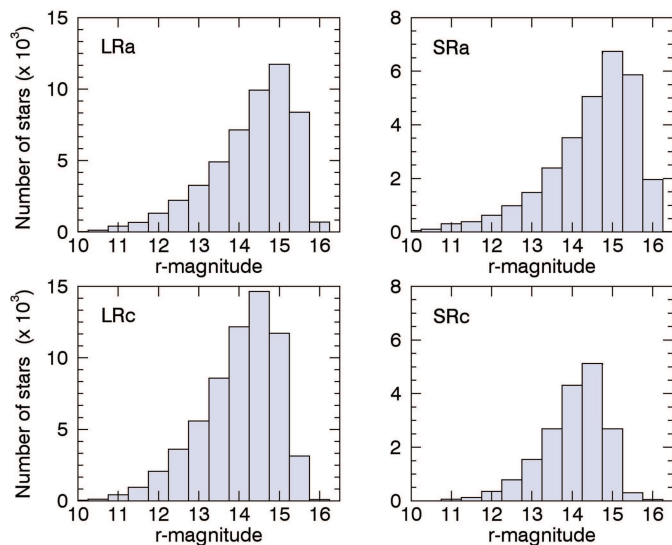


Fig. 2. Distribution of  $r$ -magnitude for the stars observed in the long runs and short runs in the anticentre (top) and centre (bottom).

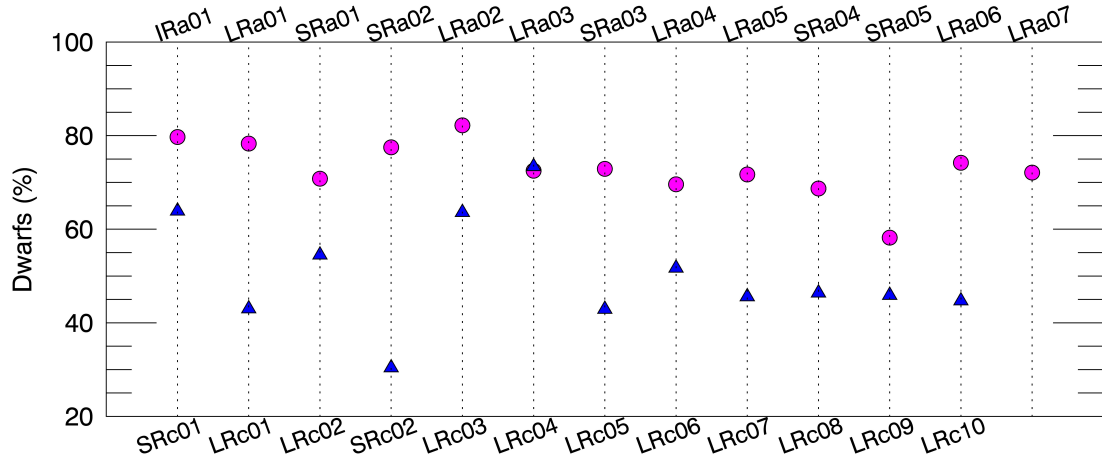
with luminosity Class V or IV were treated as dwarfs because the boundary between the two classes is not very precise: our priority was to avoid missing potential good targets. While some fields are crowded, none had sufficiently high dwarf counts to use up all the available apertures, even when including luminosity Class IV stars. Consequently, the remaining available photometric apertures were allocated to stars with a lower priority flag, typically stars with a much higher contamination rate up to 30% or even more, or to stars specifically selected by stellar physics programmes. This ad hoc and evolving selection process resulted in a non-homogeneous distribution of target magnitudes from one field to another (Fig. 2).

Table 1 provides a summary of the CoRoT runs in terms of targets. A target that has been observed more than one time is counted in Col. 7 in the run with the longest duration and not in the shortest run(s). For the latest, re-observed targets appear in Col. 8 or 9 depending whether they have been re-observed one or two times. Among the 163 665 targets, 12 005 were observed twice and 892 three times, providing a total of 177 454 light curves obtained through on-board photometry or from imagerettes, that is the complete photometric window time-series downloaded and processed on the ground (see Barros et al. 2014).

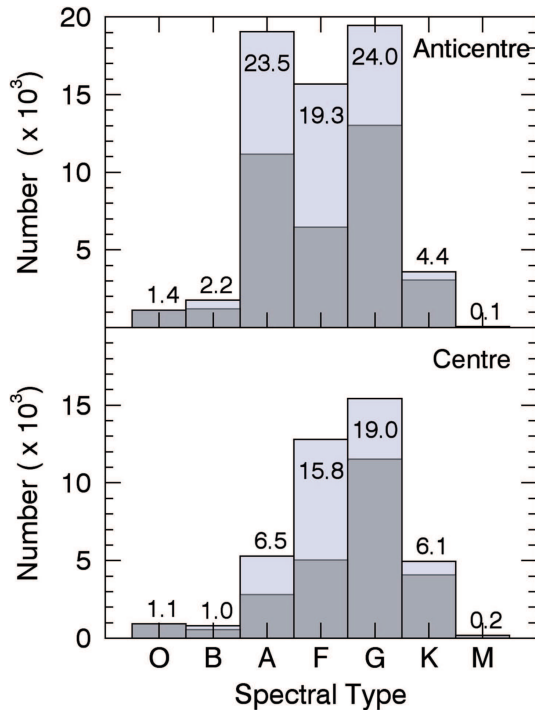
According to the updated spectral classification (Damiani et al. 2016), 61 174 of these targets are identified as luminosity Class V stars. This number increases to 101 083 when also including luminosity Class IV, showing that dwarf and subgiant stars represent the majority of the targets observed by CoRoT. There is however a significant difference in dwarfs counts depending on the pointing direction: they account for 48.9% of the observed targets in the Galactic centre fields, and 74.8% in the anti-centre ones. These numbers drop to 30.4% and 44.4% respectively, when we consider only stars of luminosity Class V (see Table 1). As expected the dwarf counts are more homogeneous in the anti-centre fields than in the centre ones (Fig. 3). In the latter, there are noticeable differences between fields to another, with dwarf counts as low as 30% in SRC02, for example, but as high as 73% in LRC04.

Figure 4 shows for dwarfs only how these targets distribute over the main spectral types in the two directions. Among them, 72 154 have spectral type F, G, K, or M, and are thus best suited

<sup>1</sup> <http://cdsbib.u-strasbg.fr/cgi-bin/cdsbib?2014yCat...102028C>



**Fig. 3.** Percentage of stars classified as dwarfs (Class V and IV) in the various fields (blue triangle: centre; pink circle: anti-centre).



**Fig. 4.** Distribution of targets classified as dwarfs (Class IV and V) over A, F, G, K, and M spectral types, observed in the exoplanet anticentre (*top*) and centre (*bottom*) fields without duplication. The numbers at the *top* of the bars give the percentage of dwarfs in each spectral type and for each direction.

for transit detection due to their small stellar radii. They represent 44% of the total number of targets observed by CoRoT. The largest spectral type group among the remaining dwarfs are A-stars, which account for 14.9% of the total number of stars observed.

### 3. Transit candidate detection and vetting

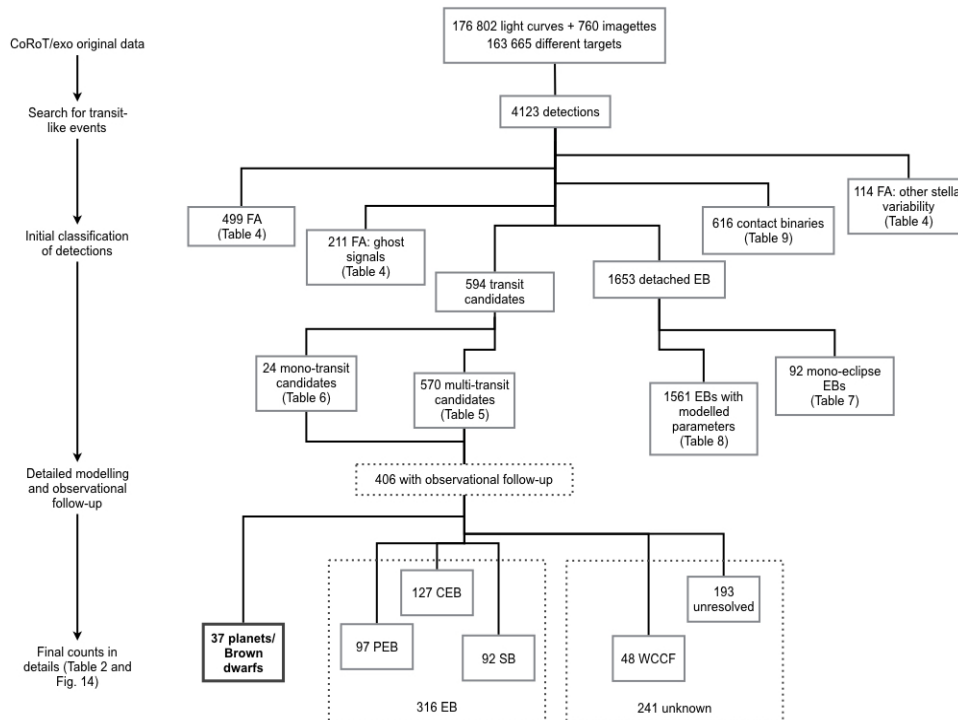
Whatever the spectral classification of each target or its photometric behaviour, all the available light curves (including those extracted from imagettes), were searched for transit-like signals. The light curves used in the present paper to produce the final version of the transit candidate and eclipsing binary

catalogues were produced using different versions of the CoRoT pipeline, as listed in Table 1. The basic processing steps in the CoRoT pipeline are described in Auvergne et al. (2009) and the differences between successive versions are listed in the documentation of the CoRoT archive (Chaintreuil et al. 2016)<sup>2</sup>. The changes between the successive versions are mostly minor, the most noteworthy being a significant improvement in the jitter correction from version 3.0 onwards. We note that the photometric noise (Asensio-Torres 2016) as well as the spatial variation of the background has increased over CoRoT’s lifetime due to the ageing of the CCDs, which led to a gradual increase of the dark current and decrease of the charge transfer efficiency (Ollivier et al. 2016). This has been corrected in Version N2-4.4 of the pipeline, but data processed using this pipeline version only became available shortly before the submission of the present paper, too late to be incorporated in the analysis. Thus we caution that the light curves used here have sub-optimal background correction, which might affect the reported transit depths, especially for the later runs. As a guide along the various processing steps that are described in the following sections and the object counts that resulted, we refer the reader to the flow-chart in Fig. 5.

#### 3.1. Transit detection

There was no official CoRoT pipeline at mission level for transit detection and light curve analysis. As described in previous run report papers (see e.g. Carpano et al. 2009; Cabrera et al. 2009), once the science-grade (N2) light curves of a given run were released to the co-investigators and associated scientists, the transit search was carried out in parallel by different teams, who use different methods to filter the light curves and detect the transits. The methods implemented by the different teams to identify transit signals were presented in Erikson et al. (2012). We do not describe them again here as there has been no major change in the detection algorithms since then. On the other hand, efforts have been made to improve the pre-filtering and detrending of the light curves (Ofir et al. 2010; Grziwa et al. 2012; Bonomo et al. 2012). As the transit search for each run was carried out as soon as it was released, the methods used for transit detection and the initial vetting of the candidates by the individ-

<sup>2</sup> [http://idoc-corotn2-public.ias.u-psud.fr/jsp/doc/CoRoT\\_N2\\_versions\\_30sept2014.pdf](http://idoc-corotn2-public.ias.u-psud.fr/jsp/doc/CoRoT_N2_versions_30sept2014.pdf)



**Fig. 5.** Flow-chart of the processing steps and their resulting counts over the various categories described in Sects. 3 and 4. We note that the first count gives the total number of transit-like features detected in the CoRoT light curves. The others numbers are corrected from duplications. FA stands for false alarms.

ual team have evolved significantly from the first to the last run. We also note that not all teams analysed every run.

Each team produced a list of transit candidates for every run they processed, and most also reported the obvious eclipsing binaries they had identified in the process. The candidate lists produced by the different teams were then combined, and each candidate discussed individually, in order to come to a consensus on the likely nature of the signal: bona fide transit candidate, astrophysical false alarm, or instrumental false alarm. The plots and assessments used to inform this discussion evolved over the lifetime of the mission, eventually settling into the transit vetting, modelling and candidate flagging procedure described in the rest of this section, but manual inspection of the light curve and discussion of each candidate during regular teleconferences remained an integral part of the candidate vetting process throughout the mission.

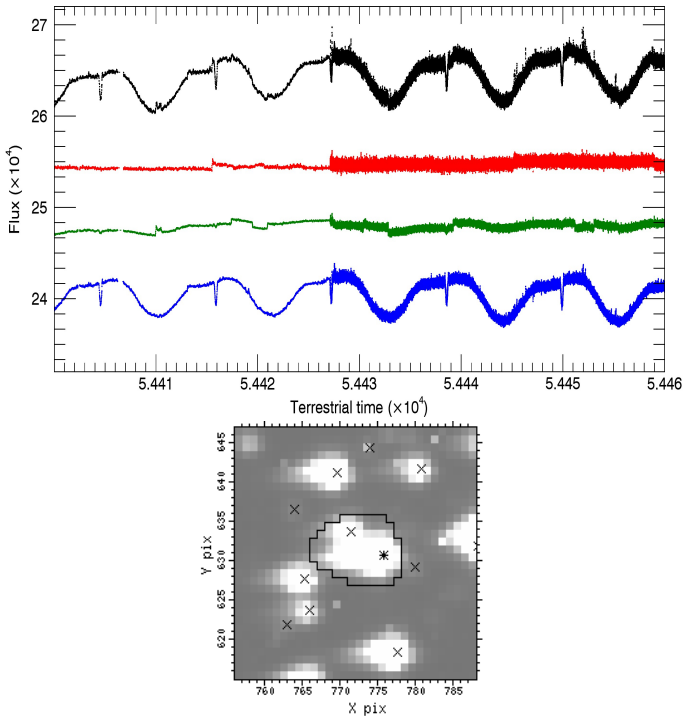
In this manner, the combined detection teams identified a total of 626 significant transit-like events, of which just over 600 were deemed potentially worthy of follow-up observations after discarding obvious instrumental and astrophysical false alarms. Before being provided to the follow-up team, these candidates were given a priority ranking ranging from 1 to 4, on the basis of the likelihood that the transit event was indeed of planetary origin. This priority ranking was conferred by the detection teams. The follow-up team then modified the priorities to take into account the magnitude of the star, as radial velocity precision is mostly limited by photon noise. These intermediate priority rankings were intended solely to help organise the follow-up process, the results of which have been incorporated into the candidate catalogues, so they are not reported here.

For the present paper, we went back to the full list of transit-like events reported by one or more of the detection teams, including cases ultimately deemed by them to be false alarms, and systematically re-analysed them, in order to produce a

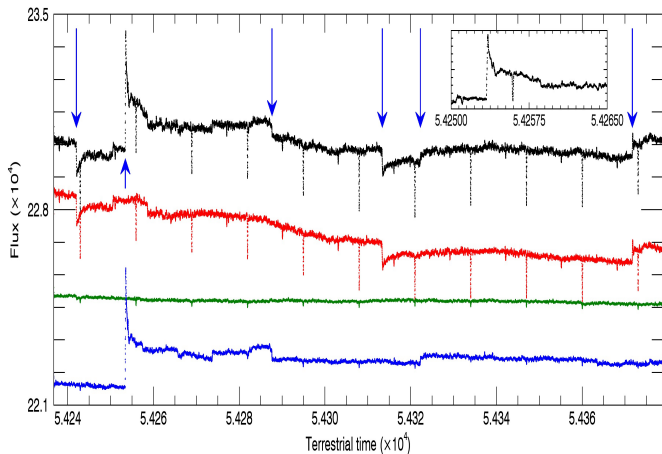
homogeneous transit candidate catalogue. Each of the detection teams provided initial estimates for the transit parameters, namely the period, depth, duration, and epoch of the transits. When a given detection was reported by more than one team, these estimates sometimes differed somewhat from each other, as they depend on the pre-processing of the light curve and the specifics of the transit-detection algorithm used. Additionally, there was considerable variation in the number and nature of the checks which were performed by the different teams to identify false alarms, such as grazing and diluted eclipsing binaries. To overcome this limitation and produce a coherent catalogue, we systematically vetted all the candidates by performing a uniform set of semi-automated checks, modelling all the transits in a consistent manner, and producing a number of plots for each candidate used as assessment tools. This was done using a purpose-written software package developed in Oxford and written in PYTHON. This package was initially developed to help prioritise transit candidates and optimise the follow-up. It has been used in this manner since 2010, although it has evolved somewhat since it was first used. For the present paper, we re-ran the latest version of the code on all the transit-like events identified since the start of the mission, resulting in a homogeneous set of transit parameter estimates. The main lines of this analysis are described in the following sections.

### 3.2. Initial transit candidate vetting

Various instances of eclipsing stellar systems which can mimic a planetary transit are the astrophysical false positives to be chased for. The on-board photometry did not provide photocentre curves that could have been used to assess the transit source location within the large photometric mask. Instead, for the brightest targets, CoRoT provided light curves in the three

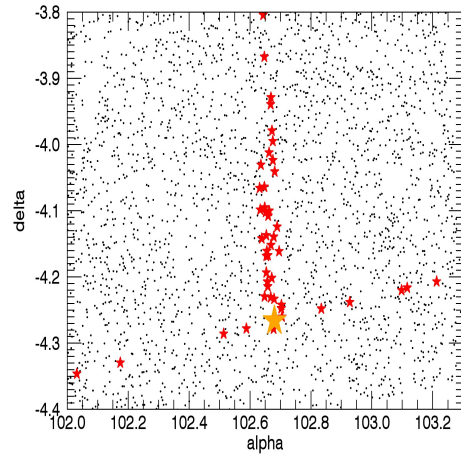


**Fig. 6.** *Top:* light curves in white, red, green, and blue (with the according colour code) of a false positive. *Bottom:* CoRoT image of the field around the target indicated by a star symbol (CID: 102779171,  $r$ -mag = 13.84) with the shape of the photometric mask overlotted and the location of nearby stars indicated with crosses.



**Fig. 7.** Light curves of an eclipsing binary that displays a series of discontinuities indicated by blue arrows. The colour code corresponds to the three colour light curves, with the resulting white light curve plotted in black. We note that the colour light curves have been shifted by a constant in order to avoid too large a scale on the y axis. The top inset is a magnification of a portion of the light curve where the discontinuity in flux is not a simple step but a sudden increase of the flux, followed by an exponential decrease as could be generated by the impact of a proton on the CCD.

coloured bandpasses. They were used to identify obvious cases where a background eclipsing binary is causing the transit signals. Figure 6 shows such an example: for this bright target ( $r$ -mag = 13.84) neither the transits observed in the white light curves or the stellar activity signal appear in the red and green light curves but both are clearly visible in the blue. The source



**Fig. 8.** Enlargement of one CoRoT CCD in the LRA02. Among the targets (black dots), the light curve of some of them (red stars) contains the imprints of a bright periodic variable star, V 741 Mon, whose position is indicated by the orange star symbol.

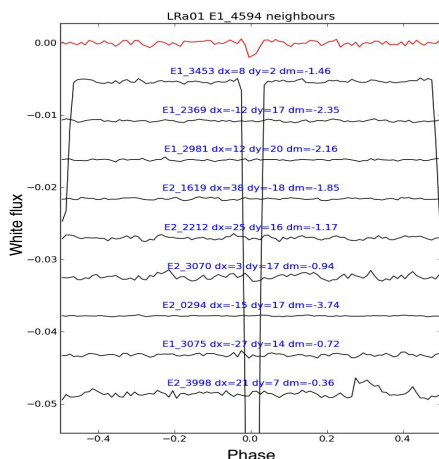
of the two is likely the nearby faint contaminant ( $r$ -mag = 15.31) whose flux is enclosed in the photometric mask.

In addition to these well-known stellar configurations, the other main sources of false detections, are the following two phenomena, which require careful treatment. The first phenomenon is the “hot-pixels”, which produce sudden discontinuities in the light curve and can cause spurious but significant detections. These can be identified by inspecting individual transit events and, where available, the three-colour photometry (as hot pixels typically affect one of the three channels only; see Fig. 7). The second occurs when light from a bright eclipsing binary leaks over one or more pixel columns either due to blooming effect that can occur for a very bright and saturated star, or due to smearing generated during the charges transfert. Depending on its brightness and its position on the CCD, a bright EB can leave its photometric imprint in the light curve(s) of other nearby target(s). In that case, the ghost transit signal exhibits the same period, epoch, and duration as those of the contaminating eclipsing binary, but the depth is shallower. An impressive example of such a phenomenon occurred in LRA02: V 741 Mon, a well-known variable star of CVn type (Renson & Catalano 2001), far too bright to be selected for observation in the faint channel, left its imprints through both blooming and smearing in the light curves of 46 targets as transit-like signals with the same period of 1.143 days and epoch. As shown in Fig. 8, stars distant by more than 47 arcmin from V 741 Mon were contaminated.

To identify these “ghost” signals, we systematically inspected the light curves of stars in the vicinity of each transit candidate (see Fig. 9). We also produced plots of the N2 light curve of a candidate, both unfolded and folded at the period of the transits, including the coloured light curves when available, and magnifications of the individual transit events to help identify false alarms due to hot pixels and obvious EBs. The same plots were also produced after removing all variability on timescales longer than a day using the iterative non-linear filter of Aigrain & Irwin (2004). We visually inspected these plots for each object, and obvious false alarms are excluded from the rest of the analysis described in Sects. 3.3 and 3.5.

This visual inspection step may seem primitive, but it is relatively quick and very effective, reducing the number of targets under consideration from 4123 light curves with transit-like events to 594 surviving planetary candidates. Of the discarded





**Fig. 9.** Example of a clear “ghost” false positive. The light curves of the candidate, LRa01\_E1\_4594 (red line at the top), and its closest neighbours are all phase-folded at the period of the detected transit signal. In this case, the transits detected in LRa01\_E1\_4594 are those that occur on the nearby eclipsing binary, LRa01\_E1\_3453, whose primary and secondary eclipses are clearly visible in its light curve.

transit-like events, 499 were found to be false detections, some due to hot pixels, others to unconfirmed detection or spurious contamination, 211 clear ghosts, and at least 115 false alarms due to other forms of stellar variability, such as pulsations or rotational modulation of star spots. Among these 4123 transit-like events, we identified 1653 detached eclipsing binaries (EB) and 616 contact binaries. Table 2 gives an overview of the number of candidates and binaries detected in each pointing. It also provides the number of candidates identified as different types of astrophysical false positives on the basis of a deeper analysis of their light curve or ground-based follow-up observations (which are discussed in more detail in Sects. 4.2 and 4.3). Table A.1 reports the list of the transit features that we discarded as false alarms. We stress that this table is not exhaustive, since no attempt was made to identify all the ghost signals caused by each bright EB systematically for example. Only those that happened to be considered initially as transit planetary or eclipsing binary candidates are listed here, but we deemed it useful to record them nonetheless.

For the remainder of this paper, the term candidates is used only to refer to the objects which passed the preliminary vetting steps, while those that were rejected at this step are referred to as false alarms or EBs. Of course, some of the candidates are in fact EBs identified in the second step of the analysis (see Sect. 4.2). These cases which were left as candidates, were originally included in the follow-up programme, before the light curves vetting tests were fully set up. We thus keep the term EBs in the following sections, to designate “obvious” EBs identified at the preliminary vetting stage. This visual inspection step also helps identify cases where some error has crept into the transit properties reported by the detection teams, which need to be corrected manually before the transits can be modelled in detail.

### 3.3. Transit candidate modelling

For the surviving transit candidates, we fitted the light curve with a simple transit model assuming a zero eccentricity. We first fitted a linear trend to the region around each individual transit, to remove stellar variability, phase-fold the resulting sections of light curve, and perform a global transit fit using the

formalism of Mandel & Agol (2002). The fitted parameters are the period  $P$ , the time of transit centre  $T_0$ , the planet-to-star radius ratio  $R_p/R_*$ , the system scale  $a/R_*$ , and the impact parameter  $b$ . We used a quadratic limb-darkening law, but fix the coefficients to  $u_a = 0.44$  and  $u_b = 0.23$ , the values tabulated by Sing (2010) for a  $0.9 M_\odot$  star in the CoRoT bandpass. The signal-to-noise ratio of the transits is not sufficient, in most cases, to fit for the limb-darkening coefficients, and we opted to use a single set of values because of the large uncertainty in the stellar parameters. It is important to bear in mind, however, that the limb-darkening coefficients used may not be appropriate for some objects. The fit was performed using an implementation of the Levenberg-Marquart algorithm for non-linear least-squares regression adapted for PYTHON from the the IDL program MPFIT.

Once these physical parameters have been obtained, the individual transit events are fitted, allowing only the time of transit centre to vary, and the ephemeris is refined using a linear fit to the times of transit centre. We repeated the process of variability removal, global and individual fits, until all the parameters have converged, meaning that their values change by less than their formal uncertainties (which are derived from the covariance matrix of the fit). At that point, we also computed the orbital inclination, stellar density and stellar radius, using the equations of Seager & Mallén-Ornelas (2003) and assuming a power-law stellar mass-radius relation with an index of 0.8. These were used to check if the transits are too long for their period, indicating a large (early type, or evolved) primary star, or a blended system. We note however that these calculations ignore limb-darkening, and are very approximate, particularly for grazing eclipses, where there is an almost complete degeneracy between the planet-to-star radius ratio, system scale and impact parameter. Therefore, the reported parameters for grazing events have very large uncertainties, and we do not report stellar density estimates for such events, as they are essentially meaningless. Additional fits are made using simple trapezoidal or triangular models to obtain direct estimates of the transit depth, total transit duration and duration of totality (or “outer” and “inner” durations respectively). Finally, we also performed separate transit fits whose results were used to perform some basic tests intended to help identify the candidates most likely to be planetary (see Sect. 3.5):

- on the odd- and even-numbered transits separately: significant differences between the two indicate that the transit-like events are caused by a near-equal mass eclipsing binary whose light is diluted by that of a third star (blended eclipsing binary), rather than by a planet.
- on the light curves in the three coloured bandpasses (where available): significant differences can indicate that the transit-like events are not grey – and hence have a stellar origin. This is to be used with caution, though, as there is a degeneracy between actual colour, and spatial location along the dispersion direction of the CoRoT prism: different depths in different colour channels are actually more likely to be due to a faint star contaminating the blue or red end of the photometric aperture, than to a real colour difference. In such cases, the transit might be on the main target – and hence might still be a genuine planetary event – or might be on the contaminating star (blended eclipsing binary).
- on the light curve around phase 0.5, to check for a secondary eclipse, which would indicate a stellar origin for the transits.

These additional transit fits were carried out with the period, epoch, impact parameter and system scale fixed to the values

**Table 2.** Summary of the transit events per field.

Field				Candidates					FU	EB	CB
	Total	Planet	unres.	PEB	CEB	SB	WCCF				
IRa01	39	2	13	1	9	9	5	27	98	15	
LRa01	52	4	14	6	15	7	6	42	162	18	
SRa01	8	0	4	1	1	0	2	4	77	12	
SRa02	18	1	8	3	2	4	0	10	92	59	
LRa02	40	3	11	1	7	10	8	37	130	39	
LRa03	16	0	5	1	4	3	3	15	40	10	
SRa03	11	3	5	0	0	2	1	7	41	3	
LRa04	7	0	0	1	1	5	0	7	38	10	
LRa05	19	0	5	7	1	5	1	11	43	9	
SRa04	11	2	1	1	5	2	0	11	50	10	
SRa05	8	1	0	2	3	1	1	7	35	57	
LRa06	10	0	2	5	3	0	0	5	15	5	
LRa07	5	0	3	0	0	1	1	3	42	25	
Total anticentre	244	16	71	29	51	49	28	186	863	272	
SRc01	47	0	32	0	3	4	8	24	114	26	
LRc01	42	4	7	8	14	9	0	36	109	37	
LRc02	50	6	20	11	6	7	0	28	94	31	
SRc02	16	0	3	0	5	2	6	13	117	67	
LRc03	45	2	14	10	9	8	2	25	72	21	
LRc04	29	0	11	7	8	3	0	17	50	17	
LRc05	30	2	8	8	10	2	0	13	46	42	
LRc06	18	1	6	6	4	0	1	7	35	23	
LRc07	10	2	4	0	2	2	0	10	30	5	
LRc08	14	3	6	3	0	1	1	10	39	27	
LRc09	28	1	5	10	7	3	2	17	40	31	
LRc10	21	0	6	5	8	2	0	20	44	17	
Total centre	350	21	122	68	76	43	20	220	790	344	
Grand total	594	37	193	97	127	92	48	406	1653	616	

**Notes.** These numbers are filtered out from duplications. The types of counts that are given in the Cols. 3–8 correspond to the candidates categories discussed in Sect. 4. Column 9 gives the number of candidates with follow-up observations. Column 10 gives the number of transit events identified as detached EB, and Col. 11 those identified as contact binary.

determined from the main transit fit, allowing only the radius ratio (i.e. the depth) to vary. For the secondary eclipse check, the limb-darkening parameters are set to zero and the initial estimate of the depth is set to a tenth of the transit depth. We note that we only checked for secondaries around phase 0.5 (for practicality reasons), so weak secondaries from eccentric binaries are missed.

The resulting parameters of the 594 planet candidates are reported in Table A.2, for all those which were not identified as obvious false positives at the preliminary vetting stage, and which displayed at least two transits in any given run. For the fitted parameters, we report the formal uncertainties (from the diagonal elements of the covariance matrix), standard error propagation is used to compute uncertainties for the derived parameters. We note that these errors do not account for correlations between the parameters, or for correlated noise in the data, so they should be taken as indicative only.

Some of them were observed twice; for these we report the parameters derived from the light curve obtained in the pointing with the longest duration, but we also list the other runs in which they were observed. This number includes those (37) that have been confirmed as planets or brown dwarfs on the basis of subsequent ground-based observations.

A further 24 candidates, which displayed only one transit in any given run, are listed separately in Table A.3. Two

single transit events (CoRoT IDs 102723949 and 102765275), initially discovered in IRa01 (Carpano et al. 2009; Moutou et al. 2009), were re-observed in the LRa01. This allowed us to determine their orbital period and they are thus now listed in Table A.2.

### 3.4. Eclipsing binaries

A total of 2269 clear eclipsing binaries were identified at the preliminary vetting stage. Of those, 1653 were sufficiently well-detached for the transit modelling described in Sect. 3.3 to converge, so their light curves were also modelled in the same way. Since the transit model used assumes a non-luminous companion, some of the fitted parameters such as  $R_p/R_*$ ,  $b$  and  $a/R_*$  are meaningless for EBs, but the modelling process does enable us to derive improved estimates of the ephemeris and primary eclipse depth and duration. Of this sample, 137 were observed twice or even three times (mostly in fields IRa01, LRa01, and LRa06, which have the strongest overlap, see Fig. 1), leaving a total of 1653 unique detached EBs identified and characterised as a by-product of the exoplanet search. The multi-transit ones (1561) are reported in Table A.5, along with a rough (by eye) classification based on their phase-folded light curve. Indeed, in the first step of the vetting process, binaries were visually classified in four sub-classes:

1. eclipsing binaries with distinct eclipses and a detected secondary eclipse at phase 0.5;
2. eccentric eclipsing binaries with distinct eclipses and a detected secondary eclipse not at phase 0.5;
3. eclipsing binaries with distinct eclipses but without detected secondary at phase 0.5;
4. contact binaries that present no clear eclipse but a near-sinusoidal modulation of their light curve.

In 243 of these detached EB we identified a secondary, but not at phase 0.5, indicating an eccentric system. Three of those were observed twice, which improved the constraints on their orbital periods. CoRoT ID 105499823 was observed in both LRc05 and LRc06, and its orbital period was determined thanks to the observation of two secondary eclipses during LRc05. For CID 102768841, an orbital period of 54.138 days was derived from the 131.5 days of LRA01 observations, but only one eclipse was observed during the much shorter LRA06 (76.6 days). Among these detached EBs, 92 showed only one primary eclipse in a given run (Table A.4). A single eclipse of CID 102586624 was observed in each of LRA01 and LRA06, which implies that its orbital period is greater than 132 days.

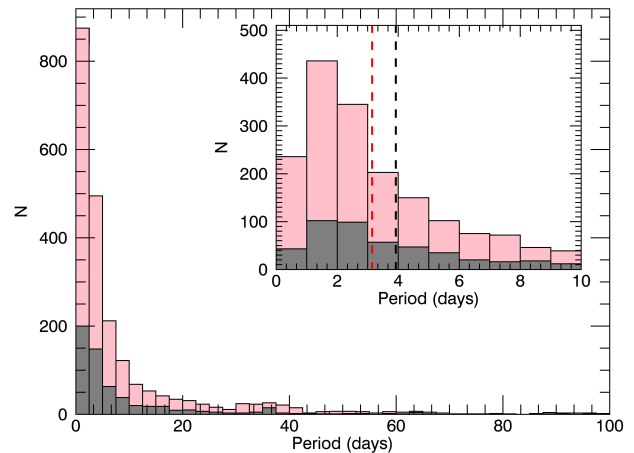
Finally, Table A.6 provides the list of transit features we classified as contact binary. For these kind of binaries, we carried out no modelling but provide the ephemeris and the period. Sorting all these events as a function of their period allow us to identify a second round of ghosts. An independent compilation of eclipsing binaries in CoRoT data has been published by Klagiyivik et al. (2016). Their table contains 2290 likely eclipsing binaries of all types (contact or detached), which they used as input sample for a search for circumbinary planets.

### 3.5. Flag system

Once the transit fits were complete, a number of tests were performed to check if the transit parameters are compatible with a planetary origin. The outcome of these tests were recorded in the form of six binary flags, which are also included in Tables A.2 and A.5. The flags are:

- $F_{\text{det}}$ : low detection significance, set if the transit depth in the white light curve is less than five times the corresponding uncertainty;
- $F_{\text{sec}}$ : secondary eclipse detected, set if the secondary eclipse depth (at phase 0.5) is more than three times the corresponding uncertainty;
- $F_{\text{odd/even}}$ : odd/even depth differences, set if the odd-to-even depth ratio is more than 1.1 at  $3\sigma$  confidence level;
- $F_{\text{col}}$ : strong colour dependence, set if the ratio of the deepest to the shallowest of the transits in the three colour channels is more than 1.5 at  $3\sigma$  confidence level;
- $F_{\text{long}}$ : transit too long, set if the best fit stellar radius is  $>2R_{\odot}$  at  $3\sigma$  confidence level;
- $F_{\text{V}}$ : V-shaped transit, set if the best-fit transit model is grazing that is with a null inner duration estimate which means a bottom flat section is lacking.

While the four first flags are directly related to the light curve analysis, the two last are associated to the physical parameters that have been derived assuming the star is a solar twin. We note that these flags are intended for a first, quick-look sorting of the candidates: they are by no means unequivocal, in the sense that a real planet could have one or more flag set, and many candidates, which were later found to be astrophysical false alarms, had none.



**Fig. 10.** Stacked histograms of the period distribution (in days) of EBs (pink) and candidates (grey). The dash lines give the median of each distribution. The inset shows an enlargement of the short end of the period range.

All the candidates (Table A.2), including the planets, and the EBs (Table A.5) have been yet blindly re-analysed with this new tool, even if their nature had already been elucidated using ground-based follow-up observations. This gives us an opportunity to learn whether we could have made better use of the transit modelling and flag system to prioritise the follow-up resources, and may be helpful in informing the candidate prioritisation strategies for future missions such as TESS and PLATO.

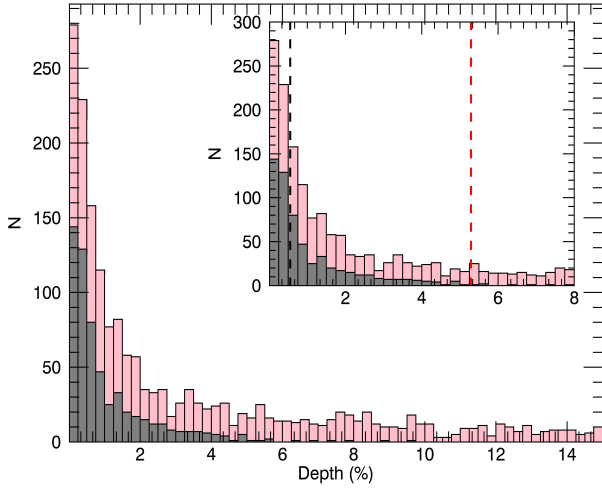
## 4. Overview and follow-up observations of the candidates

### 4.1. Statistics of the candidates

Figure 10 shows the period distribution of the candidates compared to that of the EBs. The two distributions are similar: both peak at 1.5 days, and their medians are 3.9 days and 3.1 days, respectively. Two thirds of both the candidates and the EBs have orbital periods shorter than ten days, and 90% shorter than 25 days. In both cases, a handful do show orbital periods in excess of 100 days. Some of those are single transit events, but some were detected as periodic events during long runs, as was the case for CoRoT-9b (e.g. Deeg et al. 2010).

The distributions of the transit depths, shown in Fig. 11, are more different. While both peak at 0.15%, the median depths are 0.54% and 5.26% for the candidates and EBs respectively. This is of course as expected, since the depth of the transits was one of the factors used in distinguishing EBs from possible planets. As a consequence, the distribution is truncated at large depths for the candidates, but not for the EBs.

There is a noticeable spread in the number of candidates detected during each pointing, ranging from 8 in SRa01 to 50 in LRc02 (Table 2). While the centre fields account for less dwarfs than the anticentre ones (33 3351 against 38 803), we find  $6.3 \pm 0.4$  candidates per 1000 F, G, K, and M dwarfs surveyed in the anticentre fields and  $10.5 \pm 0.6$  in the centre. This difference is also found in the number of planets with  $0.41 \pm 0.1 \%$  and  $0.63 \pm 0.1 \%$  respectively. By contrast, for the same targets sample, there is no such difference in the number of EBs detected in each pointing direction:  $22.09 \pm 0.7$  and  $23.57 \pm 0.8$  per thousand of the same population of targets, in the anticentre and

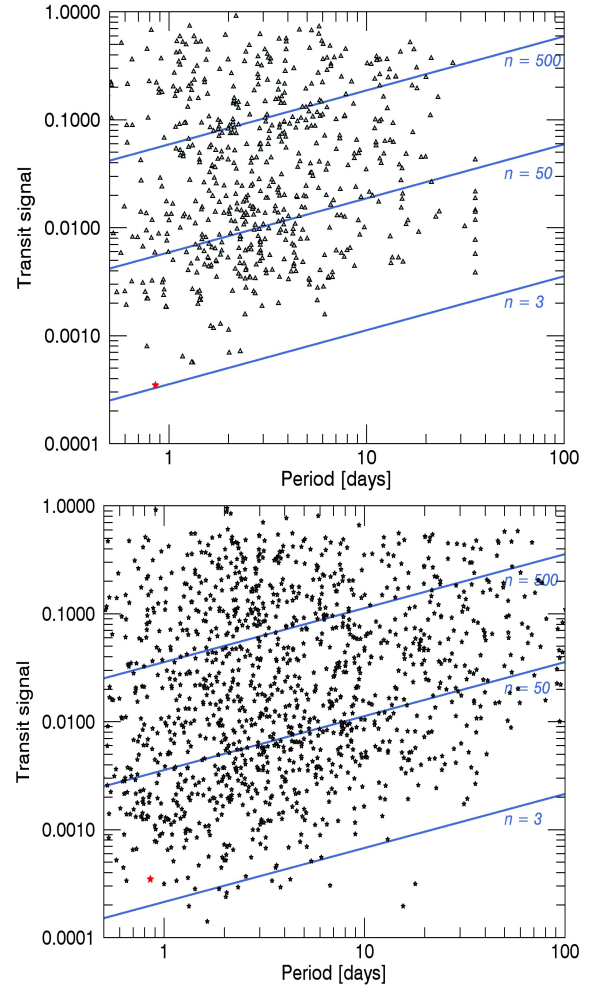


**Fig. 11.** Stacked histograms of the depth distribution (in %) of EBs (pink) and candidates (grey). The inset shows an enlargement of the short end of the depth range and the dash lines give the median of each distribution.

centre directions respectively. The higher rate at which we detect planets in the centre fields might reflect some dependency on the properties of stellar populations located in opposite galactic directions. Assessing such a dependency would however require precise and complete parameters of the underlying stellar populations we are still lacking.

This lack of a precise characterisation of the stellar population not only prevents a detailed assessment of the detection performance. Other limitations include the different duration of the CoRoT runs, their different noise properties due for example to different background levels or aging of the instrument, and the fact that the detections do not come from a single software, but from various ones that have been updated and optimised throughout the life of the mission. As a first attempt we checked any dependency with the run duration. Indeed, the median of runs duration is 54.3 days in the anticentre and 83.6 days in the centre. We calculated the Spearman's rank-order correlation between the number of candidates and the run duration. We found a correlation coefficient of 0.5626 with the evidence against a null hypothesis ( $p$ -value) of 0.34%, indicating a weak but significant correlation between the number of candidates and the duration of the run.

We also checked whether the distributions of depths and periods for the detections are consistent with what we might expect given the duration of the runs. We separated the short runs (duration less than 40 days: SRa01, SRa02, SRa03, SRa05, SRC01, SRC02, and LRA07) from the longest ones with a duration greater than 80 days, and compared in these two groups the candidates and detached eclipsing binaries to the expected transit signal that is the noise level over the transit duration, following the approach described by Pont et al. (2006). It was calculated for a time sampling of 512 s as the product of the depth of the transit and the square root of the number of points in the transit and using the median photometric precision at  $R = 14$  given in Table 1. Figure 12 shows how the detection threshold varies as a function of the run duration. While the transit signal of a planet like CoRoT-7b appears at the limit of the detection threshold for short duration runs, it is well within CoRoT detection capacity when the duration of the run goes over 80 days. Longer run durations favour the detection of shallow or long orbital period transits, as expected.

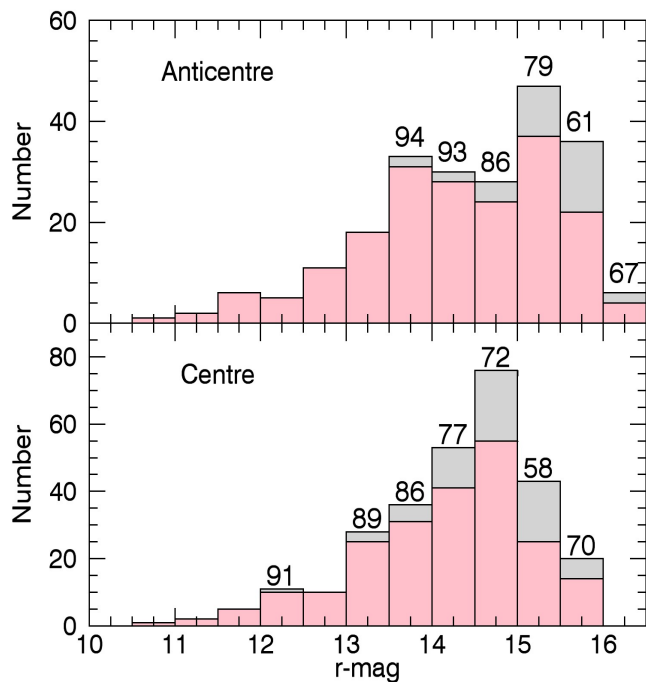


**Fig. 12.** Transit signal as a function of the period of all candidates and EB in fields whose duration was less than 40 days (*top*) and those whose duration was greater than 80 days (*bottom*). The plain blue lines show the expected transit S/N for three different noise levels (given by the  $n$  values). The position of CoRoT-7b is indicated by the red star.

#### 4.2. Follow-up observations of the candidates

Ground-based photometric and spectroscopic follow-up observations formed a key part of the CoRoT exoplanet programme. Photometry taken during and just outside the transits (on-off photometry) with larger telescopes at higher spatial resolution, was used to confirm whether the transits occurred on the main target or a fainter nearby star. High contrast imaging helped identify background binaries or physical triple systems further. Radial velocity (RV) measurements allowed us to identify objects with multiple sets of spectral lines, and to measure the masses of any actual planets, together with the eccentricity of their orbits. These or additional spectroscopic data were also used to estimate the fundamental parameters (effective temperature, gravity, mass, radius, and age) of the target stars. The role these ground-based observations in assessing the nature of the candidates has been already discussed in detail in previous run reports (e.g. Moutou et al. 2009; Cabrera et al. 2009) or planet discovery papers (e.g. Léger et al. 2009), so we do not describe the full process in detail here.

A total of 406 candidates were observed by at least one ground-based facility as part of the CoRoT follow-up programme, representing 70% of all the candidates which had been



**Fig. 13.**  $r$ -magnitude distribution of the full set of candidates (grey) and those that received follow-up observations (pink). The numbers at the top of each bin give the percentage of candidates observed from the ground in that bin when different from 100%.

deemed worthy of follow-up at one point or another. We note that the follow-up observations started as soon as possible after the end of each run, while the candidate vetting and light curve modelling process described in Sect. 3 evolved and matured continuously during the mission. Thus, 88 of the candidates initially deemed worthy of follow-up were later identified as unambiguous EBs on the basis of their light curves. At that point, they were removed from the follow-up programme, but some had already been observed. This sample provides us with a valuable opportunity to check the validity of our vetting procedures.

Figure 13 shows the distribution of the  $r$ -band magnitude of the candidates, together with the fraction which received at least some follow-up observations in each magnitude bin. This figure excludes the candidates which were initially included in the follow-up programme but later discarded on the basis of a refined light curve analysis. The only exceptions to this rule are four cases from IRa01, the first pointing of the mission, because the follow-up for that run was completed before the re-analysis of any of the light curves began. As Fig. 13 shows, candidates spanning the full magnitude range were followed up, but brighter stars were given higher priority: nearly all the candidates with  $r < 14$  received follow-up observations, while the fraction drops to 78% for  $14 \leq r \leq 15$ , and 63% for the faintest targets with  $r > 15$ . Overall, almost 85% of the candidates included in the figure were observed.

#### 4.3. Outcome of the follow-up observations

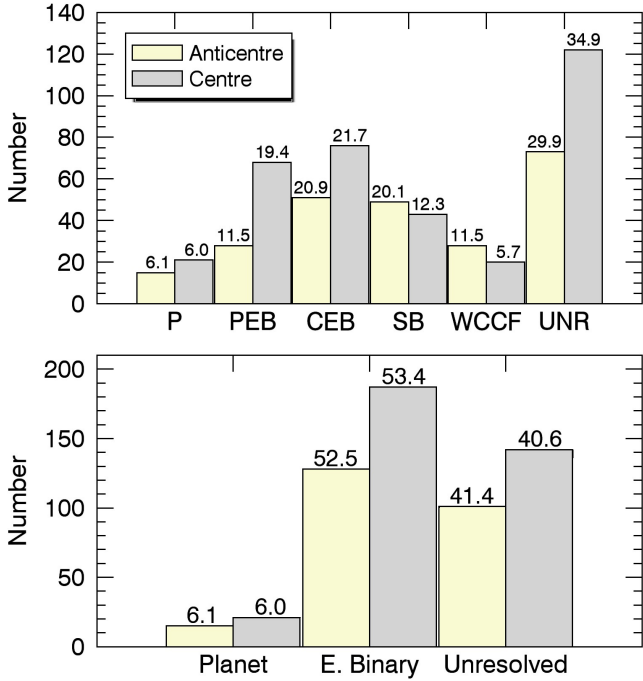
Based on the results of the follow-up observations, transit candidates were assigned to one of the following classes:

- *Spectroscopic binary (SB)*: Either the radial velocity cross-correlation function (CCF) of these candidates shows multiple, well separated peaks (indicating a double- or triple-lined spectrum), or the RV variations clearly indicate a stellar mass companion.

- *Wide CCF (WCCF)*: The CCF of these candidates shows a very broad peak, preventing the measurement of precise RVs. This can occur either because the host star is hot, and its spectrum contains few absorption lines, or is rapidly rotating, as is typical of A and early F-type stars. While planetary companions are not excluded for these more massive stars, their characterisation remains out of reach with standard methods, and these candidates are set aside.
- *Contaminating eclipsing binary (CEB)*: This category covers all cases where the CoRoT aperture contains an eclipsing binary whose light contaminates the target star, giving rise to a transit-like signal, independently if the EB is a background object, or is physically related to the brighter star (triple system). These configurations are identified through on-off photometry as described in detail in Deeg et al. (2009), high contrast imaging, or the so-called RV mask effect, where the measured RV changes significantly depending on the cross-correlation mask used (indicating that stars of more than one spectral type contribute to the spectrum).
- *Photometric eclipsing binary (PEB)*: These are candidates that were initially included in the follow-up programme, failing a clear identification as EB during the vetting tests described in Sect. 3.2, but were later identified as EBs based on a more thorough analysis of their light curves, after the start of the follow-up observations. In most cases, these objects were down-graded either because a secondary was detected at a phase other than 0.5, or on the basis of a more quantitative assessment of the eclipse depths in the three CoRoT band-passes. We expect these to be mostly EBs that are identical to the target stars, although instances of contaminating EBs may be present here as well.
- *Unresolved*: This category comprises all the candidates whose nature remains unresolved, because the follow-up observations were either inconclusive, incomplete, or in some cases (for the lowest priority objects, mostly those at high magnitude) never started. The follow-up observations may remain inconclusive for a number of reasons: i) ground-based photometry demonstrates that the transit is on the main target, but the latter is too faint to allow RV measurements at the required precision; ii) repeated RV observations reveal no significant variation consistent with the ephemeris of the transits; iii) shallow transits for which on-off photometry are not precise enough to pinpoint the precise source of the photometric signal, and no RV measurements could be performed because of the faintness of the target.
- *Planet*: Only candidates having passed a whole battery of tests, including unambiguous detection of the RV signal induced by the companion, or full statistical validation of the companion’s planetary nature using the CoRoT light curve and all available ground-based data, are included in this category. All but the most recent discoveries of these planets have been published in dedicated papers (see Bordé et al. 2018; Grziwa et al., in prep.; Gandolfi et al., in prep. for the most recent). We keep them all in the final candidates catalogue for consistency and further assessment of the flag system. We note that we have included those that were reported as brown dwarfs in this category.

These categories are reported for each candidate in Table A.2, while the number of candidates in each category is summarised, run by run, in Table 2.

Figure 14 shows the distribution of the candidates among the categories defined above, for the Galactic centre and anti-centre fields separately. In both directions, about 40% of the candidates remain unresolved (these are discussed further in Sect. 6). Faint



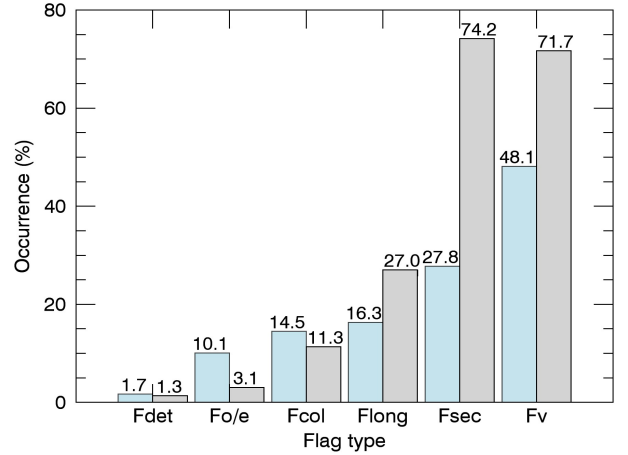
**Fig. 14.** Distribution of the candidates among the six categories defined on the basis of the follow-up observations (*top*), and the three larger groups obtained by merging some categories together (*bottom*) in centre and anticentre (see text for details). The number at the top of each bin gives the percentage of the corresponding category in the considered direction.

stars, which are challenging for precision RV measurements, account for a large part of this class, but it also contains some relatively bright targets, for which no clear RV variation could be detected. Confirmed planets account for only 6% of all the candidates.

A more synthetic overview of the status of the candidates after follow-up can be obtained by merging categories which were distinct observationally, but are essentially the same in their underlying nature. The nature of the WCCF objects remains unknown: the transits could be caused by a small star, brown dwarf, or a Jupiter-sized planet, or by a contaminating EB. Indeed, one can not exclude the presence of a Jupiter-size planet orbiting a A-type star. Ultimately, WCCF objects can be merged into the “unresolved” class. The classes SB, PEB, and CEB can be merged in a single EB class. The SB class, identified as such through follow-up observations, consists indeed of undiluted EBs. In the same way, we only know for sure that the transit events identified as CEBs are from contaminating objects, whereas the other cases identified as PEBs may be identical to the target star or may be contaminants as well. Figure 14, bottom, shows the distribution of the candidates among this smaller set of classes. The unresolved cases now account for a little over 40% of the candidates, while EBs are the main source of resolved false positives, at more than 50% of the total. The confirmed planet fraction is unchanged at 6%. Among the total number of resolved configurations in both directions, EBs be they diluted or not, account for 89.7% and planets are 10.3%.

## 5. Evaluation of the candidate screening process

While the flags described in Sect. 3.5 were computed automatically for all candidates and detached EBs, they were not used in



**Fig. 15.** Occurrence in percentage of each flag (see Sect. 3.5) for the candidates (blue) and the EBs (grey).

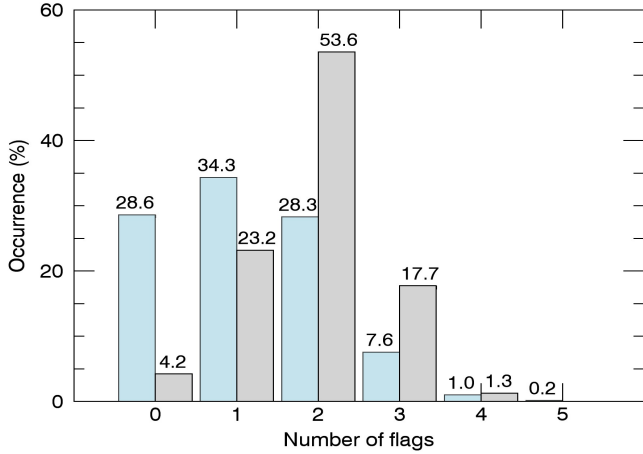
selecting or prioritising candidates for follow-up observations, or if so, only in an ad hoc manner for individual cases. This is partly because the flags were not available during the early phase of the mission, and partly because we were wary of using an automated process in case we discarded good planet candidates. This could happen, for example, because they had non-standard properties (unusual host star spectral type, transit timing variations) or because the transit modelling failed to converge properly. In principle, however, the flags could have been used both to discriminate automatically between EBs and candidates (thereby avoiding, or considerably reducing, the visual vetting stage), and to prioritise the candidates for follow-up observations. Having performed the visual vetting and the follow-up, we can now use the benefit of hindsight to investigate, after the fact, to what extent the flag system could have been used in this manner.

### 5.1. Candidates versus EBs

We first checked how useful the flag system could have been at the vetting stage, by comparing the occurrence of the different flags for the planet candidates and for the EBs, which are shown in Fig. 15.

The most striking feature of the figure is that the relative order of occurrence of the flags (most common to least common) is virtually identical for both candidates and EBs.  $F_V$  (V-shaped transit) and  $F_{sec}$  (secondary eclipse) are the most common, set in 48 and 28% of the candidates, respectively, and in more than 70% of the EBs. The next most common flag is  $F_{long}$  (long-duration transit), which is set in 16% of the candidates and 27% of the EBs. The remaining flags are all set in less than 15% of the candidates or EBs. In particular,  $F_{det}$  (low detection significance) is set only for <2% of the candidates and EBs, which shows that the detection teams were conservative when selecting transit-like events. The individual occurrence rates of individual flags for candidates and EBs do differ, so that – for example – a given object is more likely to be an EB than a planet candidate if either of  $F_{sec}$ ,  $F_V$  or  $F_{long}$  are set, but these differences are certainly not strong enough to allow a clear distinction to be made between the two groups.

The relatively high number of candidates that have flags on secondary eclipse or long-duration transit is due to human decision during the vetting process. Indeed at the vetting stage, shallow secondaries that would trigger the  $F_{sec}$  flag could not



**Fig. 16.** Distribution of the number of flags occurrence of the candidates (blue) and the EB (grey). We note that none of the detected events are attributed six flags.

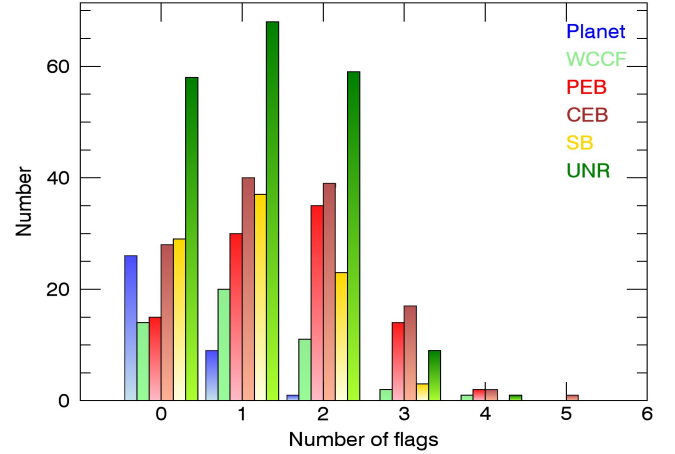
necessarily be seen by eyes. Furthermore, real planets, such as CoRoT-1b or CoRoT-2b (Alonso et al. 2009; Snellen et al. 2009), can have detectable secondaries and thus we did not want to be excessively strict in excluding them. Similarly, while V-shaped transits are much rarer for companions that are small compared to the primary star, they are not entirely excluded (see Table 3), and therefore we refrained from using the shape of the transits at the vetting stage, though we did use the depth.

We can go a step further by examining the number of flags set for individual candidates or EBs, and the combinations of flags which are set simultaneously. This is illustrated in Fig. 16. 28% of the candidates have no flag set at all, but the situation occurs for a few of the EBs as well. The vast majority of the two groups have one or more, while none have more than five out of the six flags set. Here we do see a clear difference between the candidates and the EBs: while 63% of the candidates have <2 flags set, 72% of the EBs have  $\geq 2$ . This suggests that the overall number of flags set may be a better, though still imperfect, indicator of whether a given object belongs in the EB or planet candidate group. We note also that all 37 of the CoRoT planets included in this analysis but one have fewer than two flags set.

## 5.2. Follow-up results versus flagging

We took advantage of the large follow-up effort to check our flag system against the results obtained through complementary observations. To that end, we checked the distribution of the number of flags for each of the six classes of candidates defined in Sect. 4.3; the results are shown in Fig. 17. The EBs among candidates identified through follow-up observations follow the same trend in number of flags as those identified through the analysis of their light curve. For the other classes, the outcome is less obvious. The confirmed planets that have one flag set are highlighted in Table 3. In each case this flag can be explained by a real characteristic of the system. If a reliable spectral type had been available for the host-star before the automated transit modelling and flagging step, none of the planets would have had  $F_{\text{long}}$  set. Some would still have had  $F_{\text{V}}$  or  $F_{\text{sec}}$ , but these are the few exceptions with genuinely high impact parameter or marginally detectable secondary eclipses.

On the other hand, taking at face value the observation that none of the confirmed planets had more than one flag set (except for CoRoT-36b/LRc07\_E2\_0307, Grziwa et al., in



**Fig. 17.** Histograms of flag occurrence of the candidates over the various categories defined following follow-up results (see Sect. 4.3).

**Table 3.** CoRoT planets with one flag triggered.

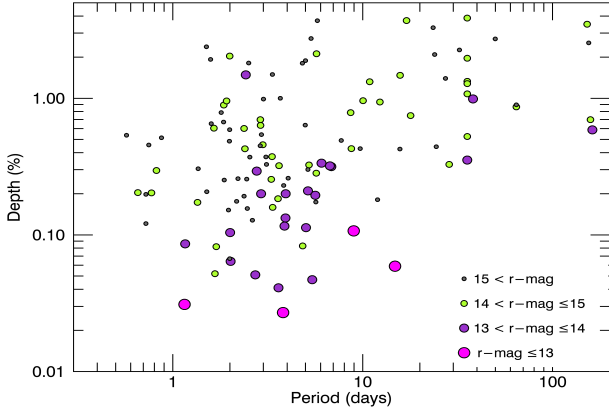
Planet	Flag	Host-star spectral type	$R_{\star}$ ( $R_{\odot}$ )
CoRoT-1b	Secondary	G0V	$1.11 \pm 0.05$
CoRoT-10b	V-shape	K1V	$0.79 \pm 0.05$
CoRoT-17b	Duration	G5V	$1.19^{+0.14}_{-0.13}$
CoRoT-22b	Colour-depth	G0V	$1.136^{+0.038}_{-0.09}$
CoRoT-24b	Secondary	K1V	$0.86 \pm 0.09$
CoRoT-25b	V-shape	F9V	$1.19^{+0.14}_{-0.03}$
CoRoT-26b	Duration	G5IV	$1.79^{+0.18}_{-0.09}$
CoRoT-28b	Duration	G8/9IV	$1.78 \pm 0.11$

**References.** (1) Barge et al. (2008); (2) Bonomo et al. (2010); (3) Csizmadia et al. (2011); (4) Moutou et al. (2014); (5) Alonso et al. (2014); (6) Almenara et al. (2013); (7) Cabrera et al. (2015).

prep.), one might conclude that follow-up observations could have concentrated on the candidates that received at the most one flag. This would have reduced the number of follow-up targets by 36%. However, the more salient conclusion of this exercise is that the flag system that we defined is too blunt a tool for reliably distinguishing between genuine planetary transits and astrophysical false positives reliably. A more nuanced approach is required, including for example a probabilistic assessment of the planetary nature of each candidate, as proposed by Morton (2012) and implemented in the VESPA package (Morton 2015).

## 6. Unresolved candidates

Following the conclusion of Sect. 5.2, planets could be searched for among unresolved candidates with one flag triggered at most, that is 119 candidates out of 193 whose status remains yet unresolved. About half of them have not been subject to ground-based complementary observations, and for those that were observed (56), the complementary observations remained inconclusive about their exact nature. Among those that were not observed, none is brighter than  $r$ -mag = 13, five are in the range 13.4–14, and the remaining ones (51) are much fainter. As discussed in Sect. 4.2 follow-up observations were also driven by the magnitude of the targets. We checked the five brightest candidates without follow-up observations and we found that either the target was suspected



**Fig. 18.** Depth versus period of the unresolved candidates with at most one flag, according to their magnitude.

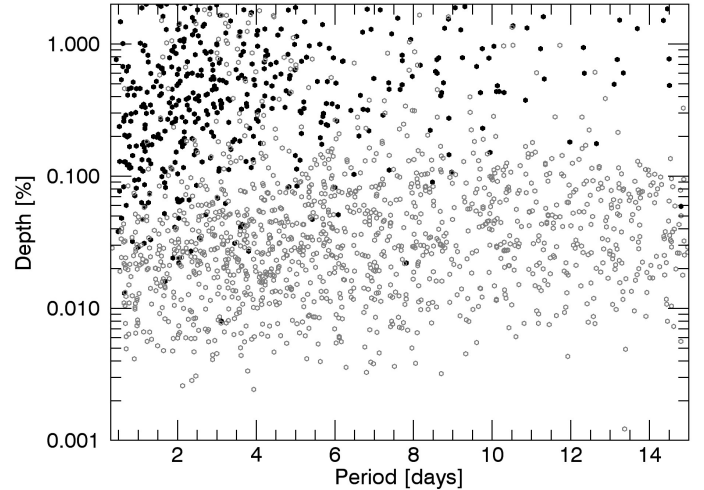
being a giant or the USNO-A2  $r$ -magnitude that was used in the input catalogue, mostly for the short runs, was much higher than the one from PPMXL, which is currently used in the last release of the input catalogue. In both cases, the target ended up with a low priority for follow-up observations.

Figure 18 shows the transit depth of these 119 candidates as a function of their period and their magnitude. Five have a depth between 3 and 4%. They are likely stellar systems but, in absence of a reliable spectral type of the host star, they are kept in the unresolved category. We note however that 68 of these unresolved events have a depth less than 0.05% among which 12 a depth less than 0.01%. About 90% have a  $r$ -mag  $> 14$ . For Jupiter-size planets radial velocity measurements remain difficult at the faint end of the CoRoT magnitude range (typically for  $r$ -mag  $> 14.5$ ). For those whose host-star is brighter, the domain of Neptune-size planets and smaller is still challenging the current spectrograph performances. The later is well exemplified by CoRoT-22b (Moutou et al. 2014) whose nature could not be fully secured by radial velocity measurements and required a complex process of planet validation, that also included ground-based images (Díaz et al. 2014).

According to current spectral classification (Damiani et al. 2016), 68% of these unresolved candidates are classified as dwarfs (luminosity Class IV or V). The ExoDat spectral classification is not completely reliable but is at least indicative. As a result, selecting the unresolved events classified as dwarf and with one flag at the most, we get 81 good candidates. Assuming that the unresolved cases follow the same distribution as the resolved cases and would distribute over EB and planet classes, following the same proportions as derived in Sect. 4.2 from the resolved cases, we may expect that  $8.4 \pm 3$  planets are lurking in this category, waiting to be confirmed as such. This highlights the challenge of establishing the planetary nature of CoRoT candidates. Even for Jupiter-sized planets, RV characterisation is difficult at the faint end of the CoRoT magnitude range, while even bright stars hosting Neptune-sized planets require many RV observations. Examples of confirmed CoRoT planets, which were at the limits of the capabilities of RV facilities, include CoRoT-16b (Ollivier et al. 2012), CoRoT-19b (Guenther et al. 2012), and CoRoT-22b (Moutou et al. 2014).

## 7. CoRoT planet occurrences

The number of planets detected is a function of the sensitivity and contamination of the complex CoRoT detection, vetting and



**Fig. 19.** Depth versus period of the unresolved candidates and confirmed planets detected by CoRoT (black dots) and by Kepler (grey dots).

follow-up process, as well as the underlying occurrence rate for different types of planets around different types of stars. A detailed estimate of the occurrence rate would require end-to-end simulations to measure the sensitivity, as well as a careful accounting of the various sources of false alarms among the candidates. A number of studies have done this, for example, for *Kepler*, where the task is made somewhat more manageable by the extremely high precision of the light curves and the uniform detection and vetting process of the candidates (see e.g. Howard et al. 2012; Fressin et al. 2013; Christiansen et al. 2015). Doing this for CoRoT is more tricky, not least because of the multiple and evolving pipelines used for candidate detection and selection over the mission lifetime. A proper completeness estimate is available for only one of the pipelines used (Bonomo et al. 2012), and then only for the special case of small (Neptune-size) planets. Additionally, the various pointings had different durations, and targeted regions of the sky with different stellar properties. Finally, the aging of the detectors over the mission lifetime affected the noise properties of the data (Aigrain et al. 2009; Asensio-Torres 2016) which might have had a significant impact on the detectability of the smaller planets in particular, but this effect has not been quantified. Proper completeness estimates of the CoRoT planet yield, or of the candidates catalogue, are thus beyond the scope of this paper. However, we can refine our calculations somewhat, if only to check to what extent the planet yield is consistent with occurrence rates derived from previous surveys. In support of the results presented in the following subsections, Fig. 19 shows candidates and confirmed planets as detected by the two missions in the period – depth diagram. Clearly there is a weak overlap only between the two missions detections in this parameters space.

We consider the number of confirmed planets detected by CoRoT that is all published objects with a CoRoT planet number. We do distinguish between small ( $R < 5 R_{\oplus}$ ) and large (giant) planets. At least 2 of the latter, CoRoT-15b (Bouchy et al. 2011) and CoRoT-33b (Csizmadia et al. 2015), with masses  $> 30 M_{\text{Jup}}$ , are classified as brown dwarfs. Furthermore, CoRoT-3b (Deleuil et al. 2008), with a mass of  $21.7 M_{\text{Jup}}$ , could be considered either as a low-mass brown dwarf or massive planet. For the purposes of the following discussion, we treat CoRoT-3b as a brown dwarf, and consider transiting brown dwarfs and hot Jupiters separately. However, we emphasise that this



approach follows the standard classification and could be questioned as the distinction between planet and brown dwarf is unclear and increasingly controversial (see [Schneider et al. 2011](#); [Hatzes & Rauer 2015](#)). Finally, as the orbital periods of CoRoT planets fall in a relatively narrow range (from a few hours to just under 13 days, except for CoRoT-9b), we do not attempt to look for trends in period space.

### 7.1. Small size planet occurrences

In the small planet group, CoRoT detected four confirmed or validated planets: CoRoT-7b, CoRoT-22b and the two planets of the only CoRoT transiting multi-planet system, CoRoT-24b and c. To convert this to a crude occurrence rate, we first consider only the 16 pointings surveyed for more than 70 days. Such long durations were needed to detect these small planets, apart from CoRoT-7b, which was detectable after only 20 days of observations, but is unusual in that it orbits one of the brightest K-dwarfs observed during the entire mission. Additionally, we restrict ourselves to the sample of G, K and M-type targets in these runs with a luminosity class of V and a magnitude  $r' < 15.5$ . This stellar sample corresponds to the one for which we have an estimate of the detection completeness, of  $36.6 \pm 0.4\%$  for transiting planets in this size range from [Bonomo et al. \(2012\)](#).

We found a total of 19 562 targets that satisfy these criteria. This number is corrected from targets that have been observed more than one time in different runs. [Damiani et al. \(2016\)](#) assessed the statistical accuracy of the spectral classification based on broad-band multi-colour photometry in the CoRoT input catalogue, and found that in the worst case, 85% of targets classified as dwarfs are indeed well-classified, and that the spectral type is generally good up to half a spectral class for the majority of CoRoT targets. We thus adopted an error of 15% in the number of stars around which CoRoT could have found small transiting planets. Finally, following [Howard et al. \(2012\)](#), we corrected for the probability that a given planet transits using the  $a/R_*$  parameter measured from the light curve. Combining all these factors, we obtained an approximate occurrence rate for planets with  $R_p < 5 R_\oplus$  and periods of  $P < 10$  days around G, K, and M main sequence stars of  $0.46 \pm 0.28\%$ .

Because the CoRoT planets validation is strongly driven by the follow-up process, to account for its incompleteness we added candidates in the small size domain. Among the candidates whose nature remains unknown and depth is compatible with being a Neptune-size or smaller planet (i.e. transit depth less than 0.20%), we selected those detected in the same reference sample as the three planets, and with one or zero flags. We ended up with 12 candidates. All these candidates have an orbital period less than 15 days. Assuming all these candidates are real planets, this gives an occurrence rate of  $2.2 \pm 0.6\%$ , a value which is still more than three times less than that the percentage of stars with at least one planet of  $7.43 \pm 0.5\%$  derived by [Fressin et al. \(2013\)](#) for the class of small Neptunes and super Earth in the Kepler field. Our result confirms the discrepancy pointed out by [Bonomo et al. \(2012\)](#) between the CoRoT and Kepler detection rates for this class of small-size planets.

### 7.2. Giant planet occurrences

For the giant planets, we followed the same methodology, but we enlarged the stellar sample of reference to all spectral types from F5 to K5 and with no restriction on the run duration. In order to mitigate incompleteness in the follow-up process in the planet

occurrence, as few candidates fainter than  $r' \simeq 15.5$  were followed-up from the ground, we adopted  $r' < 15.1$  as a conservative limit in magnitude. This gives 26 391 targets without duplication. Considering only planets that have orbital periods of ten days or less in this range of magnitudes (21 planets), we obtained an approximate occurrence rate of  $0.88 \pm 0.2\%$ , without correcting for the detection completeness. The later has never been properly estimated for CoRoT, but in this range of transit depths, it is reasonable to assume that very few transits are missed. Assuming a conservative value of 90% for the detection completeness gives an occurrence rate of  $0.98 \pm 0.26\%$ . This result is in agreement with the occurrence rates estimated for hot Jupiters from radial velocity surveys ([Wright et al. 2012](#); [Mayor et al. 2011](#)) but not with the estimates for Kepler data ([Howard et al. 2012](#); [Fressin et al. 2013](#); [Santerne et al. 2016](#)). The later range from 0.4 to 0.5% for F, G, and K dwarfs, that is less than our finding for CoRoT data. We note that separating giants detected in the anticentre fields from those in the centre ones, we found no significant difference in the occurrence rates of the close-in giants which are  $0.96 \pm 0.37$  and  $0.99 \pm 0.31$  respectively.

Additionally, three giant planets discovered by CoRoT CoRoT-10b ([Bonomo et al. 2010](#)), CoRoT-37b ([Gandolfi et al. in prep.](#)), and CoRoT-9b ([Deeg et al. 2010](#)) have periods in the range 10–100 days, with 13.24, 20.05, and 95.27 days respectively. Considering these planets in a single bin gives an occurrence rate of  $0.61 \pm 0.36\%$  assuming here again a detection completeness of 90% and keeping the same reference stellar sample as for the giants. While of very low precision, this number is in agreement with the recent estimate of  $0.9 \pm 0.24\%$  of [Santerne et al. \(2016\)](#) for the Period-valley giants. We emphasise however that this estimate should be seen as a lower limit. Indeed, the follow-up did not concentrate on single transits and its completeness in this period domain must be lower. As a first order correction attempt, we revised this occurrence rate adding single event candidates and some at longer orbital period whose nature remains unknown and which didn't get more than one flag tune on. To that purpose, we selected those that appear compatible with a giant planet in this range of orbital period with the following criteria: a transit depth between 0.4 and 3.0% and a duration between 3.0 and 10.0h. We selected 6 candidates which match these criteria. This increases the occurrence rate to  $1.86 \pm 0.68\%$ .

### 7.3. Brown dwarf occurrences

Finally, we obtained an approximate occurrence rate of  $0.07 \pm 0.05\%$  for brown dwarfs, from CoRoT-3b and CoRoT-33b only, as CoRoT-15b's magnitude is 15.47, and using the same stellar population and detection completeness as for the hot Jupiters. This value is about four times smaller than the estimate by [Santerne et al. \(2016\)](#) of  $0.29 \pm 0.17\%$  for the Kepler field, but the latter covers periods up to 400 days of orbital period, while the three CoRoT brown dwarfs all have  $P < 6$  days. In addition, this number assumes a follow-up completeness of 100% which might not reflect the reality and may explain part of the differences. However, our results indicate that short-period brown dwarfs are significantly less numerous than hot Jupiters in the same period range, a trend already noticed by [Csizmadia et al. \(2015\)](#) and [Santerne et al. \(2016\)](#).

## 8. Summary

We provide the full catalogue of all the transit-like events identified in the CoRoT light curves during the mission

lifetime by the CoRoT collaboration. It includes planet candidates that were identified after the release of each run, their status once follow-up observations were completed, and also binaries. The later were separated in two groups: detached eclipsing binaries and contact binaries. All these events, whose detection was performed by different teams in a first stage, have been re-analysed with a unified procedure and using the same softwares so that to derive, in a homogeneous and consistent way, the complete set of transit parameters, using fixed limb-darkening coefficients because of the uncertainties on the spectral classification. In addition to this modelling, we also carried out a vetting process of both candidates and binaries. It is based on a simple binary flag system over basic tests: detection significance, presence of a secondary, odd or even depth differences, colour dependence, V-shape transit, and duration of the transit. Among the 4123 transit-like signals that were analysed, it allowed us to identify periodic signals that are instrumental false positives and false detections. In total, the presented catalogue comes up with 594 events initially flagged as planet candidates which include published planets and brown dwarfs, 1653 EBs, 616 contact binaries, and 824 false alarms. For all candidates, including published planets or brown dwarfs and those whose status was later resolved through subsequent detailed analyses of their light curves or follow-up observations, the catalogue provides the complete set of transit fitted parameters with their associated errors, the validation assessment, and a summary of the outcome of follow-up observations when they were carried out. For the detached eclipsing binaries, the catalogue provides the basic transit fitted parameters and the validation assessment as for the planet candidates, and it indicates those that are clear eccentric binaries. For the contact binaries, only the basic parameters are given: ephemeris: transit epoch and period, and an estimate of the amplitude of the modulated signal. Finally, the catalogue provides the list of false alarms identified through a careful analysis of CoRoT light curves. For the unresolved candidates, we expect that the provided flagging will help in deciding which may be the highest priority in future observations or in tuning automated classification softwares.

The CoRoT exoplanet programme was supported by a large accompanying ground-based observation programme, whose completion required several years for some of the candidates. Owing to the limited amount of telescope time available and to the relatively faint nature of the target stars of CoRoT's exoplanet programme, we purposely did not carry out the follow-up observations of all candidates but concentrated efforts on the brightest ones, typically those brighter than the 15th magnitude. We resolved the nature of about two third of the candidates but could not firmly conclude for the remaining.

Follow-up completeness is close to 100% for the brightest candidates and about 78% in the range  $r$ -mag 14 to 15. As a result of both follow-up and light curves detailed analysis, all instances of EB account for 89.5% of the candidates whose nature has been resolved, which gives a false positive rate close to 90%. 193 candidates remain unresolved among which 119 have some chances being of planetary nature. For the latter, the limitation comes from the target's magnitude that does not allow a proper characterisation of the transiting body. They may be in the giant domain but around a faint star, or in the small-size one around a bright star. A simple scaling of our analysis of the candidates whose nature has been secured, allows us to estimate that about eight (within an error of three) planets among them should still be still confirmable. Although a slightly higher number of dwarfs in the anticentre stellar fields suggests at least similar

occurrence rates in both directions as for the EB, we found that CoRoT planets are detected at a 50% higher rate in the centre direction than in the anticentre one. The complexity and changes in time of the detection and candidates screening process, together with the lack of precise and complete parameters of the underlying stellar populations prevent us from drawing firm conclusions. This abundance behaviour could be related to different properties of stellar populations in the two opposite galactic directions that CoRoT probed. It could also simply be related to a detection favoured by a much longer duration on average of the runs in the centre direction.

Finally, using this first complete catalogue, we attempted to provide estimates of the occurrence rates. By distinguishing the various populations in the CoRoT detections, we find that the occurrence of small-size planets with  $R_p < 5R_\oplus$  orbiting GKM dwarfs within ten days is  $0.46 \pm 0.28\%$ . Including the best candidates in the small-size domain in the occurrence rate estimate, assuming these candidates are planets that could not be confirmed by radial velocity observations, increases the occurrence rate to  $2.2 \pm 0.6\%$ . This still a very low occurrence rate compared to *Kepler* estimates ( $7.43 \pm 0.5\%$ ) confirms the disagreement previously obtained by [Bonomo et al. \(2012\)](#) from the analysis of six CoRoT fields only. Either small-size planets escaped the detection process likely due to improperly corrected instrumental noises or this discrepancy points to a trend in the planet formation process as a function of the Galactic properties. Indeed, CoRoT fields and the *Kepler* one probe very different Galactic regions. Other sources of discrepancy might be the poor characterisation of the stellar population in the various CoRoT fields but also the lack of an unique magnitude reference system between the two mission targets catalogues.

For giant planets the situation is reversed: the occurrence rate of hot Jupiters ( $P < 10$  days) in the CoRoT fields is  $0.98 \pm 0.26\%$  that is about twice the estimate derived by [Santerne et al. \(2016\)](#) for the *Kepler* field based on planet candidates follow-up observations. For longer orbital periods, between 10 and 100 days, the occurrence rate of the secured planets in this range is  $0.61 \pm 0.36\%$ . As for the small size planets, to account for the likely incompleteness of follow-up observations in this period domain, observations that have led the CoRoT planets identification process, we revised this value including our best candidates, single or periodic. This increases the occurrence rate to  $1.86 \pm 0.68\%$ , a value which is more in agreement with previous studies ([Mayor et al. 2011](#); [Fressin et al. 2013](#); [Santerne et al. 2016](#)) and support the idea that some planets are still awaiting for confirmation in the candidates list. Assuming the separation between giant planets and brown dwarfs is real, we finally derived a brown dwarf occurrence rate of  $0.07 \pm 0.05\%$ .

We do, however, emphasise that these planet occurrence calculations are first order estimates for different reasons. First, this paper presents results that have been achieved before the final processing of all the CoRoT light curves in their version N2-4.4. Not only does this release provide an homogeneous processing of the light curves but it also corrects for the discontinuities produced by hot pixels and pointing displacements, and for the systematics ([Ollivier et al. 2016](#); [Guterman et al. 2016](#)), effects that may have prevented the detection of small planets ([Bonomo et al. 2012](#)). Second, the detections are the product of different software programmes that have evolved over the years, preventing a precise estimate of the detection completeness for the various planet populations. Third, the follow-up process has led the targets selection and somehow biased the planets identification process. Its incompleteness may lead us to underestimate some of the occurrences. Finally, one of the main issues when

assessing occurrence rates is not only the candidates detection and the planet validation but also the good knowledge we have of the stellar population that is observed. For the faint CoRoT targets that were observed in various pointings whose selection was decided according to a wide diversity of criteria that changed during the mission lifetime, the incomplete knowledge of CoRoT targets remains a limitation, despite recent improvements of the targets spectral classification. In particular, the stellar multiplicity is completely ignored in the targets characterisation process. The forthcoming release of *Gaia* catalogues and in particular of the binaries and the parallaxes will certainly greatly improve the situation. Using them to characterise the stellar population in both CoRoT and *Kepler* stellar fields would provide stellar reference samples with accurate parameters and homogeneously determined. This, completed by an homogeneous re-analysis of the recently released CoRoT light curves, including the transit detections is now required to check for any dependency of planet occurrences with the stellar Galactic properties as suggested from the current comparison with *Kepler* ones. In the future, we expect that the upcoming TESS and PLATO missions will answer this question on a much larger scale.

**Acknowledgements.** The French team thanks the CNES for its continuous support on the CoRoT Exoplanet programme, that included grants 0879, 98761, 426808, and 251091. The authors wish to thank the staff at OHP for their support during their numerous nights on SOPHIE, the staff at ESO La Silla Observatory for their support and for their contribution to the success of the HARPS project and operation. The team at the IAC acknowledges support by grants ESP2007-65480-C02-02 and AYA2010-20982-C02-02, AYA2012-39346-C02-02 and ESP2015-65712-C5-4-R, all of the Spanish Secretary of State for R&D&I (MINECO). The CoRoT/Exoplanet catalogue (Exodat) was made possible by observations collected for years at the Isaac Newton Telescope (INT), operated on the island of La Palma by the Isaac Newton group in the Spanish Observatorio del Roque de Los Muchachos of the Instituto de Astrofísica de Canarias. The German CoRoT team (TLS and University of Cologne) acknowledges DLR grants 50OW0204, 50OW0603, and 50QP0701. The Swiss team acknowledges the ESA PRODEX programme and the Swiss National Science Foundation for their continuous support on CoRoT ground follow-up. S. Aigrain acknowledges STFC grant ST/G002266 Office in the form of a Return Grant.

## References

- Aigrain, S., & Irwin, M. 2004, *MNRAS*, **350**, 331
- Aigrain, S., Pont, F., Fressin, F., et al. 2009, *A&A*, **506**, 425
- Almenara, J. M., Deeg, H. J., Aigrain, S., et al. 2009, *A&A*, **506**, 337
- Almenara, J. M., Bouchy, F., Gaulme, P., et al. 2013, *A&A*, **555**, A118
- Alonso, R., Guillot, T., Mazeh, T., et al. 2009, *A&A*, **501**, L23
- Alonso, R., Moutou, C., Endl, M., et al. 2014, *A&A*, **567**, A112
- Asensio-Torres, R. 2016, ArXiv e-prints [arXiv:1609.02436]
- Auvergne, M., Bodin, P., Boissard, L., et al. 2009, *A&A*, **506**, 411
- Baglin, A., Auvergne, M., Barge, P., et al. 2006, in *The CoRoT Mission Pre-Launch Status - Stellar Seismology and Planet Finding*, eds. M. Fridlund, A. Baglin, J. Lochard, & L. Conroy *ESA SP, 1306*, 33
- Baglin, A., Chaintreuil, S., & Vandermarcq, O. 2016, *II.1 The CoRoT observations*, ed. CoRot Team, 29
- Barge, P., Baglin, A., Auvergne, M., et al. 2008, *A&A*, **482**, L17
- Barros, S. C. C., Almenara, J. M., Deleuil, M., et al. 2014, *A&A*, **569**, A74
- Bonomo, A. S., Santerne, A., Alonso, R., et al. 2010, *A&A*, **520**, A65
- Bonomo, A. S., Chabaud, P. Y., Deleuil, M., et al. 2012, *A&A*, **547**, A110
- Bonomo, A. S., Hébrard, G., Raymond, S. N., et al. 2017, *A&A*, **603**, A43
- Bordé, P., Díaz, R., Creevey, O., et al. 2018, *A&A*, submitted
- Bouchy, F., Deleuil, M., Guillot, T., et al. 2011, *A&A*, **525**, A68
- Cabrera, J., Fridlund, M., Ollivier, M., et al. 2009, *A&A*, **506**, 501
- Cabrera, J., Csizmadia, S., Montagnier, G., et al. 2015, *A&A*, **579**, A36
- Carone, L., Gandolfi, D., Cabrera, J., et al. 2012, *A&A*, **538**, A112
- Carpino, S., Cabrera, J., Alonso, R., et al. 2009, *A&A*, **506**, 491
- Cavarrac, C., Moutou, C., Gandolfi, D., et al. 2012, *Ap&SS*, **337**, 511
- Chaintreuil, S., Bellucci, A., Baudin, F., et al. 2016, *II.5 Where to find the CoRoT data?*, ed. CoRot Team, 109
- Christiansen, J. L., Clarke, B. D., Burke, C. J., et al. 2015, *ApJ*, **810**, 95
- Csizmadia, S., Moutou, C., Deleuil, M., et al. 2011, *A&A*, **531**, A41
- Csizmadia, S., Hatzes, A., Gandolfi, D., et al. 2015, *A&A*, **584**, A13
- Damiani, C., Meunier, J.-C., Moutou, C., et al. 2016, *A&A*, **595**, A95
- Deeg, H. J., Gillon, M., Shporer, A., et al. 2009, *A&A*, **506**, 343
- Deeg, H. J., Moutou, C., Erikson, A., et al. 2010, *Nature*, **464**, 384
- Deleuil, M., Deeg, H. J., Alonso, R., et al. 2008, *A&A*, **491**, 889
- Deleuil, M., Meunier, J. C., Moutou, C., et al. 2009, *AJ*, **138**, 649
- Díaz, R. F., Almenara, J. M., Santerne, A., et al. 2014, *MNRAS*, **441**, 983
- Erikson, A., Santerne, A., Renner, S., et al. 2012, *A&A*, **539**, A14
- Fressin, F., Torres, G., Charbonneau, D., et al. 2013, *ApJ*, **766**, 81
- Gazzano, J.-C., de Laverny, P., Deleuil, M., et al. 2010, *A&A*, **523**, A91
- Grziwa, S., Pätzold, M., & Carone, L. 2012, *MNRAS*, **420**, 1045
- Guenther, E. W., Díaz, R. F., Gazzano, J.-C., et al. 2012, *A&A*, **537**, A136
- Guterman, P., Mazeh, T., & Faigler, S. 2016, *II.3 Exposure based algorithm for removing systematics out of the CoRoT light curves*, ed. CoRot Team, 55
- Hatzes, A. P., & Rauer, H. 2015, *ApJ*, **810**, L25
- Haywood, R. D., Collier Cameron, A., Queloz, D., et al. 2014, *MNRAS*, **443**, 2517
- Hoaglin, D. C., Mosteller, F., & Tukey, J. W. 1983, *Understanding Robust and Exploratory Data analysis* (New York: Wiley)
- Howard, A. W., Marcy, G. W., Bryson, S. T., et al. 2012, *ApJS*, **201**, 15
- Klagyivik, P., Deeg, H. J., Cabrera, J., Csizmadia, S., & Almenara, J. M. 2017, *A&A*, **602**, A117
- Lecavelier des Etangs, A., Hébrard, G., Blandin, S., et al. 2017, *A&A*, **603**, A115
- Léger, A., Rouan, D., Schneider, J., et al. 2009, *A&A*, **506**, 287
- Llebaria, A., & Guterman, P. 2006, in *ESA SP, 1306*, 293
- Mandel, K., & Agol, E. 2002, *ApJ*, **580**, L171
- Mayor, M., Marmier, M., Lovis, C., et al. 2011, ArXiv e-prints [arXiv:1109.2497]
- Morton, T. D. 2012, *ApJ*, **761**, 6
- Morton, T. D. 2015, *VESPA: False positive probabilities calculator*, *Astrophysics Source Code Library* [record ascl:1503.011]
- Moutou, C., Pont, F., Bouchy, F., et al. 2009, *A&A*, **506**, 321
- Moutou, C., Almenara, J. M., Díaz, R. F., et al. 2014, *MNRAS*, **444**, 2783
- Ofir, A., Alonso, R., Bonomo, A. S., et al. 2010, *MNRAS*, **404**, L99
- Ollivier, M., Gillon, M., Santerne, A., et al. 2012, *A&A*, **541**, A149
- Ollivier, M., Deru, A., Chaintreuil, S., et al. 2016, *II.2 Description of processes and corrections from observation to delivery*, ed. CoRot Team, 41
- Pont, F., Zucker, S., & Queloz, D. 2006, *MNRAS*, **373**, 231
- Renson, P., & Catalano, F. A. 2001, *VizieR Online Data Catalog: J/A+A/378/113*
- Robin, A. C., Reylé, C., Derrière, S., & Picaud, S. 2003, *A&A*, **409**, 523
- Roeser, S., Demleitner, M., & Schilbach, E. 2010, *AJ*, **139**, 2440
- Santerne, A., Moutou, C., Tsantaki, M., et al. 2016, *A&A*, **587**, A64
- Schneider, J., Dedieu, C., Le Sidaner, P., Savalle, R., & Zolotukhin, I. 2011, *A&A*, **532**, A79
- Seager, S., & Mallén-Ornelas, G. 2003, *ApJ*, **585**, 1038
- Sing, D. K. 2010, *A&A*, **510**, A21
- Snellen, I. A. G., de Mooij, E. J. W., & Albrecht, S. 2009, *Nature*, **459**, 543
- Wright, J. T., Marcy, G. W., Howard, A. W., et al. 2012, *ApJ*, **753**, 160

- <sup>1</sup> Aix-Marseille Université, CNRS, CNES, LAM (Laboratoire d'Astrophysique de Marseille) UMR 7326, 13388 Marseille, France e-mail: magali.deleuil@lam.fr
- <sup>2</sup> Department of Physics, Denys Wilkinson Building Keble Road, Oxford, OX1 3RH, UK
- <sup>3</sup> Institute of Planetary Research, German Aerospace Center, Rutherfordstrasse 2, 12489 Berlin, Germany
- <sup>4</sup> Observatoire de Genève, Université de Genève, 51 Ch. des Maillettes, 1290 Sauverny, Switzerland
- <sup>5</sup> Instituto de Astrofísica de Canarias, 38205 La Laguna, Tenerife, Spain
- <sup>6</sup> Universidad de La Laguna, Dept. de Astrofísica, 38200 La Laguna, Tenerife, Spain
- <sup>7</sup> Observatoire de Haute Provence, 04670 Saint-Michel-l'Observatoire, France
- <sup>8</sup> Institut d'Astrophysique de Paris, 98bis boulevard Arago, 75014 Paris, France
- <sup>9</sup> Osservatorio Astrofisico di Torino, Strada Osservatorio, 20, 10025 Pino Torinese, Italy
- <sup>10</sup> Laboratoire d'astrophysique de Bordeaux, Univ. Bordeaux, CNRS, B18N, allée Geoffroy Saint-Hilaire, 33615 Pessac, France
- <sup>11</sup> Facultad de Ciencias Exactas y Naturales, Buenos Aires, Argentina
- <sup>12</sup> CONICET - Universidad de Buenos Aires. Instituto de Astronomía y Física del Espacio (IAFE), Buenos Aires, Argentina
- <sup>13</sup> Leiden Observatory, University of Leiden, PO Box 9513, 2300 RA Leiden, The Netherlands

- <sup>14</sup> Department of Earth and Space Sciences, Chalmers University of Technology, Onsala Space Observatory, 439 92 Onsala, Sweden
- <sup>15</sup> Dipartimento di Fisica, Università di Torino, via Pietro Giuria 1, 10125 Torino, Italy
- <sup>16</sup> Landessternwarte Königstuhl, Zentrum für Astronomie der Universität Heidelberg, Königstuhl 12, 69117 Heidelberg, Germany
- <sup>17</sup> Thüringer Landessternwarte, Sternwarte 5, Tautenburg 5, 07778 Tautenburg, Germany
- <sup>18</sup> Observatoire de la Côte d'Azur, Laboratoire Cassiopée, BP 4229, 06304 Nice Cedex 4, France
- <sup>19</sup> Rheinisches Institut für Umweltforschung an der Universität zu Köln, Aachener Strasse 209, 50931, Germany
- <sup>20</sup> Institut d'Astrophysique Spatiale, Université Paris-Sud 11 & CNRS (UMR 8617), Bât. 121, 91405 Orsay, France
- <sup>21</sup> School of Physics and Astronomy, Tel Aviv University, Tel Aviv, Israel
- <sup>22</sup> Department of Earth and Planetary Sciences, Weizmann Institute of Science, 76100, Rehovot, Israel
- <sup>23</sup> Institut für Astrophysik, Georg-August-Universität, Friedrich-Hund-Platz 1, 37077 Göttingen, Germany
- <sup>24</sup> Zentrum für Astronomie und Astrophysik, TU Berlin, Hardenbergstraße 36, 10623 Berlin, Germany
- <sup>25</sup> LESIA, Observatoire de Paris, Place J. Janssen, 92195 Meudon Cedex, France
- <sup>26</sup> LUTH, Observatoire de Paris, CNRS, Université Paris Diderot, 5 place Jules Janssen, 92195 Meudon, France
- <sup>27</sup> Department of Physics and Astronomy, Aarhus University, 8000 Aarhus C, Denmark
- <sup>28</sup> Space Research Institute, Austrian Academy of Science, Schmiedlstr. 6, 8042 Graz, Austria
- <sup>29</sup> Leibniz-Institut für Astrophysik Potsdam (AIP), An der Sternwarte 16, 14482 Potsdam, Germany

## Appendix A: Additional tables

Table A.1. continued.

Table A.1. Discarded transit-like signals.

CoRoT-ID	Run	Type
102855348	IRa01	FD
102814334	IRa01	FD
102823343	IRa01	FD
102870852	IRa01	FD
102817472	IRa01	FD
102940723	IRa01	FD
102973070	IRa01	FD
102913574	IRa01	FD
102939944	IRa01	G
102855409	IRa01	G
102835817	IRa01	G
102805893	IRa01	G
102777119	IRa01	G
102588918	LRa01	FD
102776522	LRa01	FD
102717012	LRa01	FD
102733319	LRa01	FD
102754051	LRa01	FD
102790592	LRa01 LRa06	FD
102746008	LRa01	FD
102682858	LRa01 LRa06	FD
102692686	LRa01	FD
102633553	LRa01	FD
102663890	LRa01	FD
102709133	LRa01	FD
102634420	LRa01 LRa06	G
102613782	LRa01	FD
102754163	LRa01	G
102617334	LRa01	G
102609031	LRa01 LRa06	FD
102584786	LRa01 LRa06	FD
102595682	LRa01 LRa06	FD
102582070	LRa01 LRa06	FD
102795835	LRa01 IRa01 LRa06	FD
102717803	LRa01 LRa06	FD
102779171	LRa01 IRa01 LRa06	G
102697826	LRa01 LRa06	G
102674894	LRa01 LRa06	FD
102577194	LRa01	FD
223923921	SRa01	FD
500007038	SRa01	FD

CoRoT-ID	Run	Type
223980568	SRa01	FD
224005945	SRa01 SRa05	FD
223951052	SRa01	FD
223979111	SRa01	FD
223963003	SRa01	FD
223958368	SRa01	FD
223932273	SRa01 SRa05	FD
221672091	SRa02	FD
221703782	SRa02	FD
221660085	SRa02	FD
221649080	SRa02	FD
221658515	SRa02	FD
221688572	SRa02	FD
221664141	SRa02	G
221625707	SRa02	FD
221640500	SRa02	FD
221616045	SRa02	FD
221649266	SRa02	FD
221663085	SRa02	FD
221652902	SRa02 LRa07	FD
221652242	SRa02	FD
221620551	SRa02	G
221627739	SRa02	FD
110674478	LRa02	FD
110831843	LRa02	FD
103013798	LRa02	FD

**Notes.** FD: false detection, G: ghost signal; V: stellar variability. The full table is available at the CDS.

**Table A.2.** Planetary candidate parameters and status after follow-up observations or the second step of the vetting process.

CoRoT-ID	Run	Epoch (BJD)	Period (days)	Depth (%)	dur (h)	$R_p/R_*$	$a/R_*$	b	$\rho_{\odot}$	r-mag	Spectral type	Flags	Nature	FU
100468104	LR01	24542326.053457 ± 0.000868	1.043600 ± 0.00001	0.460 ± 0.009	2.004 ± 0.040	0.0751 ± 0.002	2.45 ± 0.08	0.91 ± 0.01	0.18 ± 0.02	15.27	G2	010010	PEB	no
100567226	LR01	24542326.650441 ± 0.002378	7.711616 ± 0.00023	0.822 ± 0.042	2.221 ± 0.110	0.1003 ± 0.006	14.82 ± 1.23	0.90 ± 0.03	0.73 ± 0.18	14.35	K5	000000	SB	yes
100589010	LR01	24542326.352324 ± 0.004144	0.780472 ± 0.00004	0.167 ± 0.009	3.859 ± 0.173	0.5404 ± 0.000	1.60 ± 0.00	1.50 ± 0.00	0.09 ± 0.00	15.81	K3	010011	CEB	yes
100609705	LR01	24542326.251308 ± 0.015360	3.303820 ± 0.00061	0.112 ± 0.012	6.978 ± 0.664	0.3625 ± 0.144	1.71 ± 65.18	1.33 ± 79.88	0.01 ± 0.70	13.69	G2	000001	CEB	yes
100654833	LR01	24542326.278830 ± 0.003079	0.531066 ± 0.00002	0.129 ± 0.008	2.473 ± 0.137	0.2790 ± 0.128	1.36 ± 119.91	1.24 ± 133.03	0.12 ± 31.54	13.56	K0	000101	SB	yes
100725706	LR01	24542326.424803 ± 0.000982	13.240160 ± 0.00016	1.514 ± 0.028	2.542 ± 0.042	0.1483 ± 0.023	22.36 ± 1.10	0.92 ± 0.05	0.85 ± 0.13	14.76	G2	000001	P	yes
100768215	LR01	24542326.903972 ± 0.006775	2.940266 ± 0.00024	0.332 ± 0.013	8.609 ± 0.303	0.2978 ± 0.24	1.64 ± 19.46	1.23 ± 26.40	0.01 ± 0.24	15.42	F5	011001	unr	yes
100773735	LR01	24542326.735644 ± 0.000607	4.973831 ± 0.00004	0.992 ± 0.005	5.252 ± 0.028	0.0950 ± 0.001	6.45 ± 0.17	0.61 ± 0.03	0.15 ± 0.01	15.85	F5	010010	SB	yes
100834293	LR01	24542326.666796 ± 0.001538	11.301173 ± 0.00019	1.607 ± 0.051	2.387 ± 0.067	0.1447 ± 0.004	24.19 ± 2.01	0.89 ± 0.06	1.48 ± 0.37	15.49	K4	000001	PEB	yes
100958339	LR01	24542326.757894 ± 0.002770	15.741157 ± 0.00046	1.472 ± 0.038	3.778 ± 0.116	0.1299 ± 0.027	19.24 ± 0.91	0.86 ± 0.02	0.38 ± 0.05	15.42	F5	000000	unr	yes
100980128	LR01	24542326.869230 ± 0.004602	6.001884 ± 0.00030	0.082 ± 0.006	3.169 ± 0.210	0.2545 ± 0.139	4.05 ± 3.14	1.22 ± 143.55	0.02 ± 0.06	14.66	K5	000101	CEB	yes
100982006	LR01	2454220.305756 ± 0.002675	16.674931 ± 0.00042	0.408 ± 0.011	4.002 ± 0.108	0.5690 ± 0.000	12.76 ± 0.00	1.50 ± 0.00	0.10 ± 0.00	16.03	A0	000111	SB	yes
101026464	LR01	24542325.485009 ± 0.001721	1.321907 ± 0.00003	0.598 ± 0.026	1.904 ± 0.076	0.3692 ± 0.474	2.85 ± 59.59	1.27 ± 100.55	0.18 ± 11.14	15.44	G0	010001	PEB	yes
101055792	LR01	24542325.732251 ± 0.002908	1.938394 ± 0.00007	0.127 ± 0.009	1.768 ± 0.122	0.0399 ± 0.002	4.08 ± 0.91	0.92 ± 0.04	0.24 ± 0.16	15.63	G0	000000	CEB	yes
101086161	LR01	2454232.820704 ± 0.000735	6.212380 ± 0.00006	0.742 ± 0.009	2.684 ± 0.036	0.0892 ± 0.001	11.93 ± 0.44	0.82 ± 0.02	0.59 ± 0.07	14.49	A5	000000	P	yes
101095286	LR01	2454231.140619 ± 0.001680	10.105790 ± 0.00018	0.436 ± 0.005	6.791 ± 0.071	0.3616 ± 0.19	4.98 ± 10.95	1.28 ± 20.76	0.02 ± 0.11	15.53	F8	010001	CEB	yes
101106246	LR01	2454230.080584 ± 0.004697	11.324195 ± 0.00058	0.543 ± 0.021	5.436 ± 0.213	0.3287 ± 0.243	7.27 ± 9.64	1.24 ± 29.38	0.04 ± 0.16	14.76	K2	000001	CEB	yes
101115531	LR01	24542326.513689 ± 0.000708	0.520945 ± 0.00000	0.237 ± 0.005	1.800 ± 0.032	0.3120 ± 0.35	1.50 ± 30.89	1.25 ± 36.89	0.17 ± 10.30	13.50	A0	000101	unr	yes
101123916	LR01	24542326.493089 ± 0.003387	1.138595 ± 0.00005	0.349 ± 0.013	4.755 ± 0.152	0.3365 ± 0.78	1.50 ± 71.09	1.27 ± 82.63	0.03 ± 4.93	15.32	K2	001001	unr	yes
101186644	LR01	2454199.661244 ± 0.005467	5.278815 ± 0.00031	0.793 ± 0.014	15.203 ± 0.237	0.3752 ± 0.259	1.89 ± 29.50	1.26 ± 39.97	0.00 ± 0.15	15.34	A5	011001	CEB	yes
101206560	LR01	24542326.316716 ± 0.000175	1.742992 ± 0.00000	0.460 ± 0.031	6.246 ± 0.338	0.0612 ± 0.002	49.68 ± 1.74	0.00 ± 2.78	0.99 ± 0.10	15.91	G2	000000	CEB	yes
101206989	LR01	24542326.202786 ± 0.002918	40.663250 ± 0.00380	0.326 ± 0.006	2.259 ± 0.039	0.1626 ± 0.001	6.76 ± 0.24	0.02 ± 1.39	1.36 ± 0.14	14.95	K5	000000	P	yes
101218359	LR01	24542326.540337 ± 0.009925	0.577831 ± 0.00002	0.048 ± 0.005	1.220 ± 0.122	0.0271 ± 0.002	1.61 ± 0.24	0.96 ± 0.02	0.17 ± 0.07	13.35	G5	011000	unr	yes
101259269	LR01	24542326.316716 ± 0.0005109	4.29458 ± 0.00049	0.387 ± 0.013	14.245 ± 0.419	0.3572 ± 0.54	1.64 ± 47.11	1.36 ± 31.21	0.09 ± 3.06	15.22	F5	010001	PEB	no
101332685	LR01	24542326.540337 ± 0.005109	13.101103 ± 0.00076	0.495 ± 0.024	4.402 ± 0.218	0.3563 ± 1.11	9.67 ± 74.42	1.27 ± 117.59	0.07 ± 1.63	14.14	F5	010001	CEB	yes
101351899	LR01	2454217.077826 ± 0.002647	21.970001 ± 0.00059	1.594 ± 0.039	5.062 ± 0.107	0.1355 ± 0.005	23.82 ± 0.93	0.86 ± 0.02	0.37 ± 0.04	14.61	G2	010100	SB	yes
101368192	LR01	24542326.316716 ± 0.000513	4.256670 ± 0.00002	0.505 ± 0.003	3.678 ± 0.022	0.0661 ± 0.001	8.23 ± 0.43	0.48 ± 0.09	0.41 ± 0.06	13.63	A5	000000	P	yes
101424939	LR01	24542326.599705 ± 0.002355	2.176965 ± 0.00006	0.193 ± 0.009	2.403 ± 0.108	0.3176 ± 89.158	2.66 ± 46.49	1.27 ± 92.58	0.05 ± 2.79	15.36	K1	010101	PEB	no
101433649	LR01	2454200.676696 ± 0.004950	79.967743 ± 0.000297	1.448 ± 0.015	10.748 ± 0.132	0.1140 ± 0.002	50.84 ± 2.95	0.55 ± 0.08	0.27 ± 0.05	15.79	K0	010000	PEB	yes
101436549	LR01	24542326.548922 ± 0.001160	0.734881 ± 0.00001	0.410 ± 0.012	2.152 ± 0.055	0.3521 ± 0.27	1.73 ± 51.35	1.27 ± 66.02	0.13 ± 11.36	14.05	K3	010001	CEB	yes
101439653	LR01	2454220.386021 ± 0.000917	17.497412 ± 0.00009	4.825 ± 0.041	3.024 ± 0.026	0.2333 ± 0.007	36.77 ± 0.54	0.80 ± 0.02	2.17 ± 0.10	15.64	G8	000001	PEB	no
101482707	LR01	2454220.386021 ± 0.000917	39.899550 ± 0.00033	1.712 ± 0.013	6.127 ± 0.046	0.3972 ± 7.009	31.06 ± 19.96	1.22 ± 7.79	0.25 ± 0.49	13.93	K3	000001	SB	yes
101614469	LR01	24542325.188572 ± 0.010845	6.865639 ± 0.00083	0.220 ± 0.010	11.534 ± 0.447	0.5478 ± 0.000	2.26 ± 0.00	1.50 ± 0.00	0.00 ± 0.00	15.76	G0	010011	CEB	yes
101653417	LR01	24542325.259854 ± 0.002575	5.782229 ± 0.00017	0.245 ± 0.012	2.775 ± 0.114	0.3355 ± 76.063	5.79 ± 31.87	1.28 ± 79.22	0.08 ± 1.28	14.81	F8	010001	CEB	yes
101675703	LR01	24542326.207777 ± 0.002648	1.793128 ± 0.00005	0.359 ± 0.013	3.012 ± 0.116	0.0644 ± 0.003	2.80 ± 0.29	0.87 ± 0.03	0.09 ± 0.03	13.91	F8	000000	CEB	yes
101708400	LR01	2454232.770660 ± 0.001721	4.221396 ± 0.00008	1.298 ± 0.012	8.308 ± 0.076	0.1136 ± 0.001	3.24 ± 0.09	0.75 ± 0.02	0.03 ± 0.00	12.78	A5	010010	SB	yes
102282722	LR03	2455105.449152 ± 0.000843	3.551001 ± 0.00003	2.060 ± 0.035	2.557 ± 0.040	0.1698 ± 0.027	7.49 ± 0.37	0.90 ± 0.06	0.45 ± 0.07	14.27	G5	010001	unr	no
102294953	LR03	2455108.210538 ± 0.004060	0.915302 ± 0.00004	0.071 ± 0.007	2.021 ± 0.192	0.2477 ± 191.372	1.52 ± 197.05	1.22 ± 197.05	0.06 ± 16.26	15.22	G8	000101	CEB	yes
102296945	LR03	2455104.553952 ± 0.01298	3.874284 ± 0.00006	0.116 ± 0.003	2.232 ± 0.062	0.0316 ± 0.003	11.57 ± 4.66	0.55 ± 0.52	1.38 ± 1.67	14.91	F8	000000	unr	yes
102304094	LR03	2455102.709660 ± 0.003074	6.191418 ± 0.00021	0.738 ± 0.041	2.675 ± 0.135	0.3888 ± 83.543	8.81 ± 74.09	1.28 ± 89.01	0.24 ± 6.02	15.07	K3	000001	SB	yes
102312073	LR03	2455101.28817 ± 0.003727	36.260544 ± 0.00132	2.756 ± 0.112	3.481 ± 0.145	0.1762 ± 0.017	58.26 ± 4.40	0.83 ± 0.05	2.01 ± 0.46	15.25	G5	000001	WCCF	yes
102327039	LR03	2455103.797122 ± 0.000378	7.926828 ± 0.00003	1.081 ± 0.003	7.610 ± 0.019	0.0951 ± 0.000	8.19 ± 0.13	0.33 ± 0.04	0.12 ± 0.01	15.68	G8	010010	SB	yes
102347809	LR03	2455075.557353 ± 0.004282	35.231670 ± 0.00128	1.366 ± 0.033	6.088 ± 0.171	0.1182 ± 0.003	30.77 ± 1.93	0.82 ± 0.03	0.31 ± 0.06	15.50	G2	000000	CEB	yes

**Notes.** P: planet; unr: unresolved; SB: spectroscopic binary; PEB: photometric eclipsing binary; WCCF: contaminating eclipsing binary; CEB: photometric eclipsing binary; WCCF: wide CCF that indicates the host star is hot and/or is a fast rotator. The full table is available at the CDS.

**Table A.3.** Single transit events among the planet candidates.

CoRoT-ID	Run	Epoch (BJD)	Period (days)	Depth (%)	dur (h)	<i>r</i> -mag	Spectral type	Flags	Nature	FU
100887662	LRc01	2454322.270238 ± 0.000619	≥142	3.483 ± 0.026	11.677 ± 0.082	15.93	A0	000001	unr	no
101068850	LRc01	2454294.506093 ± 0.000429	≥142	4.471 ± 0.039	9.330 ± 0.083	15.82	A5	000001	SB	yes
101157411	LRc01	2454293.936860 ± 0.002052	≥142	0.587 ± 0.080	6.220 ± 0.000	15.06	G2	000000	unr	yes
102387834	LRa03	2455159.583271 ± 0.002346	≥148	0.697 ± 0.034	3.039 ± 0.218	13.42	K3	000000	unr	yes
102802996	IRa01	2454163.426543 ± 0.001772	≥54	1.691 ± 0.069	3.711 ± 0.141	15.56	F5	000001	WCC	yes
102822869	IRa01	2454188.928345 ± 0.002384	≥54	0.896 ± 0.055	2.474 ± 0.000	16.08	K1	000000	unr	no
102874481	IRa01	2454156.802266 ± 0.000462	≥54	3.212 ± 0.024	6.184 ± 0.053	14.18	K2	000000	WCC	yes
102895957	IRa01	2454162.953333 ± 0.001705	≥54	0.706 ± 0.018	5.180 ± 0.149	12.67	K0	000101	WCC	yes
102973379	IRa01	2454171.736236 ± 0.002136	≥54	0.865 ± 0.015	8.659 ± 0.141	14.82	B6	000000	unr	no
104768853	LRc05 LRc06	2455312.976240 ± 0.379440	≥20	4.222 ± 0.037	10.696 ± 0.085	15.37	A5	000011	PEB	no
106015624	LRc02	2454577.574564 ± 0.001207	≥145	2.543 ± 0.027	8.927 ± 0.109	15.81	G2	000000	unr	no
110659798	LRa02	2454880.959203 ± 0.001458	≥114	0.335 ± 0.007	4.787 ± 0.127	15.06	G2	000100	SB	yes
211616889	SRc01	2454216.010564 ± 0.012741	≥25	0.525 ± 0.019	30.708 ± 1.163	15.86	F8	000000	unr	no
211621528	SRc01	2454220.954299 ± 0.004186	≥25	0.353 ± 0.025	6.141 ± 0.365	15.50	F6	000000	unr	no
211631779	SRc01	2454213.818543 ± 0.002793	≥25	1.963 ± 0.043	10.236 ± 0.257	15.90	G2	000000	unr	no
211634383	SRc01	2454215.659145 ± 0.002352	≥25	3.863 ± 0.012	64.785 ± 0.201	13.04	G8	000000	unr	no
211641087	SRc01	2454211.393121 ± 0.001907	≥25	1.330 ± 0.056	3.412 ± 0.192	15.06	K0	000000	unr	no
211647475	SRc01	2454224.349735 ± 0.003131	≥25	0.707 ± 0.010	22.163 ± 0.236	15.65	A5	000000	WCC	yes
211649312	SRc01	2454212.404953 ± 0.004319	≥25	1.280 ± 0.056	8.530 ± 0.399	14.48	G0	000000	unr	no
211650063	SRc01	2454227.869986 ± 0.002899	≥25	1.710 ± 0.032	15.354 ± 0.288	15.62	G2	000001	SB	yes
211666578	SRc01	2454208.394234 ± 0.003307	≥25	1.077 ± 0.027	10.236 ± 0.277	15.59	G2	000000	unr	no
604178606	LRa04	2455503.788410 ± 0.001063	≥77	1.648 ± 0.018	6.723 ± 0.085	12.40	A5	000000	SB	yes
631571789	LRc07	2455691.326890 ± 0.001910	≥81	2.787 ± 0.044	10.508 ± 0.186	15.87	G2	000000	SB	yes
633483984	LRc10 LRc07	2454110.229903 ± 0.004037	≥20	2.057 ± 0.008	83.186 ± 0.425	15.06	G0	000100	PEB	yes

**Table A.4.** Likely detached eclipsing binaries of which only a single eclipse was observed.

CoRoT-ID	Run	Epoch (BJD)	Period (days)	Depth (%)	dur (h)	<i>r</i> -mag	Spectral type	Flags	Nature
102919036	IRa01	2454174.4537940 ± 0.004703	≥54	1.641 ± 0.044	16.187 ± 0.432	15.60	O9V	000001	EB
102819749	IRa01	2454098.1059830 ± 0.000232	≥54	13.354 ± 0.052	7.419 ± 0.030	14.38	F5IV	000000	EB
102801672	IRa01	2454155.1336450 ± 0.008315	≥54	4.076 ± 0.317	7.825 ± 0.565	15.28	A5IV	000001	EB+sec
102829388	IRa01	2454163.8502930 ± 0.000776	≥54	8.569 ± 0.055	18.552 ± 0.108	15.78	A5V	000001	EB
102647266	LRa01	2454465.4379690 ± 0.013505	≥131	7.424 ± 0.154	5.431 ± 0.146	16.56	A5V	000001	EB
102574444	LRa01	2454422.3187830 ± 0.000420	≥131	6.159 ± 0.066	5.432 ± 0.077	13.97	F8IV	000001	EB
102582649	LRa01 LRa06	2454510.9758390 ± 0.000244	≥131	17.030 ± 0.151	5.432 ± 0.051	15.85	F6V	000001	EB
102586624	LRa01 LRa06	2454473.1756410 ± 0.000548	≥131	15.797 ± 0.117	10.864 ± 0.092	14.99	A5IV	000001	EB
300003789	LRa02	2454842.0261040 ± 0.000189	≥114	11.874 ± 0.117	4.671 ± 0.053	14.44	F8IV	000001	EB
110851732	LRa02	2454865.9032800 ± 0.000592	≥114	7.685 ± 0.033	14.013 ± 0.057	15.92	A5V	000000	EB
110679817	LRa02	2454811.8894470 ± 0.000216	≥114	7.400 ± 0.040	4.787 ± 0.030	15.62	G2IV	000000	EB
110827324	LRa02	2454875.3730270 ± 0.000863	≥114	6.005 ± 0.057	11.966 ± 0.103	14.67	G8V	000001	EB
110680774	LRa02	2454824.9235410 ± 0.000337	≥114	6.894 ± 0.020	14.360 ± 0.042	15.29	A5V	000000	EB+sec
110851928	LRa02	2454825.3592330 ± 0.007684	≥114	10.926 ± 0.161	4.786 ± 0.079	14.38	A5IV	000001	EB
102299893	LRa03	2455234.1879060 ± 0.000396	≥148	37.611 ± 0.116	15.195 ± 0.046	15.40	A7V	000001	EB+sec
605308520	LRa04	2455498.7186640 ± 0.001499	≥77	3.872 ± 0.041	15.132 ± 0.150	14.48	G0V	000001	EB
605087784	LRa04	2455516.0710810 ± 0.001359	≥77	12.866 ± 0.085	15.131 ± 0.110	15.22	G2V	000001	EB+sec
605144096	LRa04	2455499.1986420 ± 0.000278	≥77	20.975 ± 0.117	10.087 ± 0.051	15.44	A0V	000001	EB
602013995	LRa05	2455585.4083140 ± 0.000297	≥90	9.620 ± 0.049	5.786 ± 0.041	15.08	F5V	000000	EB
738643355	LRa07	2456209.4010750 ± 0.001202	≥29	32.354 ± 0.073	11.312 ± 0.039	14.30	G5III	000000	EB+sec
737917418	LRa07	2456216.9849030 ± 0.001026	≥29	1.301 ± 0.052	3.016 ± 0.104	15.25	O9V	000101	EB
737553986	LRa07	2456187.1860230 ± 0.278301	≥29	3.131 ± 0.115	1.589 ± 0.000	15.50	G0III	000000	EB
738645307	LRa07	2456204.8067820 ± 0.014339	≥29	33.847 ± 0.160	11.681 ± 0.050	13.90	A7V	000011	EB
221635112	LRa07 SRa02	2456217.8125120 ± 0.002304	≥20	1.594 ± 0.060	5.279 ± 0.131	13.68	G2IV	000000	EB
737198603	LRa07	2456217.0058110 ± 0.004343	≥29	2.429 ± 0.151	6.787 ± 0.392	14.47	G0IV	000001	EB
737552479	LRa07	2456219.4950660 ± 0.000872	≥29	14.613 ± 0.154	8.295 ± 0.083	15.25	F5IV	000001	EB+sec
737198435	LRa07	2456230.0395590 ± 0.001043	≥29	15.634 ± 0.090	9.426 ± 0.048	15.32	G0IV	000001	EB
737556177	LRa07	2456226.1645000 ± 0.001026	≥29	19.965 ± 0.268	13.197 ± 0.092	15.17	F8IV	000001	EB
737916449	LRa07	2456208.5834500 ± 0.003738	≥29	5.258 ± 0.245	4.525 ± 0.137	15.54	B6IV	000000	EB
221649269	LRa07 SRa02	2456215.2371030 ± 0.004336	≥20	1.474 ± 0.103	6.033 ± 0.408	15.43	A5IV	000000	EB
737200242	LRa07	2456212.6561430 ± 0.001559	≥29	7.726 ± 0.197	6.033 ± 0.128	15.10	A0V	000001	EB
737916519	LRa07	2456229.0730350 ± 0.003177	≥29	3.347 ± 0.106	6.033 ± 0.237	15.29	A7V	000000	EB
100758671	LRc01	2454238.0985440 ± 0.000542	≥142	12.859 ± 0.038	8.756 ± 0.034	15.48	A5IV	000000	EB+sec
101044188	LRc01	2454279.1111380 ± 0.005101	≥142	1.939 ± 0.050	8.759 ± 0.300	15.13	K0III	000001	EB
100542479	LRc01	2454120.2318630 ± 1.565207	≥142	4.255 ± 0.079	8.275 ± 0.150	13.97	F8V	000001	EB
105921588	LRc02	2454676.9168170 ± 0.000243	≥145	35.041 ± 0.093	20.831 ± 0.052	15.86	A5V	000001	EB
310126749	LRc03	2454980.8846320 ± 0.001609	≥89	29.685 ± 0.203	7.616 ± 1.579	14.89	A0V	000100	EB
310241881	LRc03	2454929.3697270 ± 0.002790	≥89	11.648 ± 0.226	13.330 ± 0.266	15.39	B1V	000001	EB+sec
104232556	LRc04	2455043.7478260 ± 0.001310	≥84	3.529 ± 0.053	10.845 ± 0.137	15.15	G5III	000001	EB
104223201	LRc04	2455063.8665080 ± 0.003248	≥84	2.488 ± 0.086	9.037 ± 0.330	14.66	G2V	000001	EB
105592930	LRc05	2455354.9217980 ± 0.001795	≥87	7.333 ± 0.058	9.337 ± 0.063	15.16	F8IV	000001	EB
104476149	LRc06	2455430.3165200 ± 0.000338	≥77	29.740 ± 0.091	16.781 ± 0.043	15.99	F8IV	000101	EB+sec
104726248	LRc06 LRc05	2455426.1837940 ± 0.001351	≥20	3.303 ± 0.110	3.356 ± 0.107	15.64	F8IV	000001	EB
223956963	SRa01	2454543.8735990 ± 0.001571	≥23	8.474 ± 0.115	11.224 ± 0.142	14.73	M2I	000000	EB
223929762	SRa01 SRa05	2454547.1971660 ± 0.000574	≥20	5.798 ± 0.111	3.848 ± 0.074	13.84	A5IV	000001	EB
224015696	SRa01	2454546.5039710 ± 0.000215	≥23	3.403 ± 0.045	2.564 ± 0.035	15.50	A5IV	000101	EB
224007715	SRa01	2454552.9463240 ± 0.000284	≥23	32.329 ± 0.178	8.011 ± 0.045	15.28	F8IV	000001	EB
223957597	SRa01	2454551.0261130 ± 0.000853	≥23	7.236 ± 0.075	3.845 ± 0.136	14.62	O9V	000000	EB

**Notes.** The last column indicates whether a secondary was observed (EB+sec) or not (EB). The full table is available at the CDS.



**Table A.5.** Detached eclipsing binaries parameters and their categories (last column): 0.0 a secondary is detected at phase 0.5, 0.1 a secondary is seen but not at phase 0.5, 0.2 no secondary is detected or seen (see Sect. 3.4)

CoRoT-ID	Run	Epoch (BJD)	Period (days)	Depth (%)	dur (h)	r-mag	Spectral type	Flags	Nature
102900859	IRa01	2454131.6769320 ± 0.000102	4.853439 ± 0.000014	9.703 ± 0.020	8.620 ± 0.015	15.27	F6V	010011	0.0
102902696	IRa01	2454134.6788270 ± 0.000482	1.980958 ± 0.000030	31.816 ± 0.151	4.469 ± 0.057	14.35	A5IV	010001	0.0
102844383	IRa01	2454133.9285540 ± 0.000608	1.527205 ± 0.000027	0.855 ± 0.008	2.639 ± 0.027	15.81	F8IV	000000	0.0
102896719	IRa01	2454134.7506080 ± 0.000629	1.231210 ± 0.000023	1.098 ± 0.014	2.305 ± 0.018	13.69	A5IV	010000	0.0
102836138	IRa01	2454133.6538860 ± 0.000088	3.558188 ± 0.000009	15.208 ± 0.034	4.270 ± 0.008	15.42	F8IV	010001	0.0
102774523	IRa01	2454129.7628170 ± 0.000116	5.917754 ± 0.000020	26.976 ± 0.083	3.977 ± 0.012	15.49	K0V	010001	0.0
102733170	IRa01	2454133.8829030 ± 0.000142	1.979428 ± 0.000008	5.390 ± 0.011	5.701 ± 0.011	15.42	A0V	010001	0.0
102879429	IRa01	2454133.8162850 ± 0.000252	4.030543 ± 0.000030	6.871 ± 0.038	2.902 ± 0.015	14.66	F8IV	010001	0.0
102884662	IRa01	2454131.2742580 ± 0.000333	3.848470 ± 0.000036	34.714 ± 0.068	13.854 ± 0.024	16.03	G0III	010011	0.0
102824749	IRa01	2454131.1953310 ± 0.000105	8.097553 ± 0.000023	18.376 ± 0.020	7.774 ± 0.008	15.44	A5V	010010	0.0
102870524	IRa01	2454134.6168130 ± 0.000286	1.867599 ± 0.000016	1.112 ± 0.014	1.165 ± 0.014	15.90	G0III	010001	0.0
102741994	IRa01	2454133.4916110 ± 0.000172	4.622043 ± 0.000023	8.594 ± 0.028	4.437 ± 0.013	15.82	G2V	010001	0.0
102785724	IRa01	2454134.8991220 ± 0.000140	4.716288 ± 0.000019	21.118 ± 0.047	6.565 ± 0.013	14.49	F6V	010011	0.0
102892869	IRa01	2454131.3794870 ± 0.000735	4.075875 ± 0.000081	1.542 ± 0.014	3.913 ± 0.031	14.76	G0III	010101	0.0
102882044	IRa01	2454127.8463820 ± 0.000193	9.073544 ± 0.000043	22.010 ± 0.093	3.920 ± 0.017	13.50	K2V	000001	0.0
102793963	IRa01	2454134.1519300 ± 0.000481	1.242180 ± 0.000018	1.749 ± 0.029	1.371 ± 0.022	15.06	K2V	010001	0.0
102819692	IRa01	2454133.8486840 ± 0.000053	1.382680 ± 0.000002	28.895 ± 0.038	3.916 ± 0.005	15.34	F1IV	010001	0.0
102724646	IRa01	2454134.9375770 ± 0.000099	0.352998 ± 0.000001	9.378 ± 0.029	1.542 ± 0.004	15.91	K0V	010001	0.0
102844991	IRa01	2454134.4677200 ± 0.000083	1.074246 ± 0.000003	15.220 ± 0.027	2.888 ± 0.005	14.95	G2V	010001	0.0
102842466	IRa01	2454133.8322120 ± 0.000150	4.917104 ± 0.000022	63.946 ± 0.085	14.397 ± 0.017	13.50	K0V	010011	0.0
102826984	IRa01	2454133.8828030 ± 0.000056	1.476765 ± 0.000002	25.243 ± 0.037	3.544 ± 0.005	14.14	A5IV	010001	0.0
102803023	IRa01	2454133.1874480 ± 0.000150	2.320584 ± 0.000010	14.903 ± 0.032	5.458 ± 0.010	15.36	A5IV	010011	0.0
102813089	IRa01	2454134.1055700 ± 0.000063	1.306273 ± 0.000002	20.790 ± 0.023	3.198 ± 0.003	14.05	A5IV	010000	0.0
102826074	IRa01	2454091.6607660 ± 0.001122	48.577117 ± 0.000704	15.541 ± 0.086	9.327 ± 0.048	15.64	A7V	000001	0.0
102889458	IRa01	2454134.2981250 ± 0.000160	2.019839 ± 0.000010	21.091 ± 0.034	6.981 ± 0.010	13.93	A5IV	010011	0.0
102886012	IRa01	2454134.5784140 ± 0.001820	1.584459 ± 0.000085	0.857 ± 0.026	2.890 ± 0.081	15.76	A5IV	010001	0.0
102841939	IRa01	2454133.4509710 ± 0.000090	2.377641 ± 0.000006	29.610 ± 0.056	3.538 ± 0.006	13.91	A0V	010001	0.0
102801922	IRa01	2454133.4725990 ± 0.001210	5.458740 ± 0.000193	0.931 ± 0.014	3.668 ± 0.053	14.27	B8V	000001	0.1
102904593	IRa01	2454125.1574550 ± 0.000277	16.896029 ± 0.000128	17.949 ± 0.083	5.677 ± 0.025	14.91	G2V	000001	0.1
102735257	IRa01	2454133.2567510 ± 0.001183	23.698302 ± 0.000763	11.504 ± 0.115	4.550 ± 0.042	15.25	G8V	000001	0.1
102931335	IRa01	2454134.8680840 ± 0.000113	3.979278 ± 0.000013	22.983 ± 0.034	4.775 ± 0.006	15.68	A5IV	000000	0.1
102760888	IRa01	2454134.1962500 ± 0.002251	1.904146 ± 0.000124	0.155 ± 0.006	2.833 ± 0.101	15.50	A0V	000011	0.1
102901962	IRa01	2454134.6515990 ± 0.000472	2.444625 ± 0.000035	9.990 ± 0.037	7.275 ± 0.023	14.95	G2V	000011	0.2
102870613	IRa01	2454131.7150160 ± 0.002800	7.137310 ± 0.000544	55.538 ± 0.092	8.907 ± 0.015	14.39	F6V	010011	0.0
102943073	IRa01	2454137.9825880 ± 0.000107	1.644106 ± 0.000006	4.722 ± 0.016	2.683 ± 0.010	15.77	B8V	010101	0.0
102912741	IRa01	2454137.2699780 ± 0.000225	1.245128 ± 0.000008	10.081 ± 0.039	2.809 ± 0.010	15.28	A5V	010001	0.0
102879375	IRa01	2454137.8072520 ± 0.000051	0.977191 ± 0.000002	7.804 ± 0.013	2.767 ± 0.004	13.42	F5IV	010001	0.0
102811578	IRa01	2454137.3639640 ± 0.000112	1.668697 ± 0.000006	2.627 ± 0.008	2.884 ± 0.008	15.57	A5IV	010011	0.0
102872646	IRa01	2454137.0472510 ± 0.000274	1.882877 ± 0.000016	3.489 ± 0.014	4.609 ± 0.016	15.63	F8IV	010011	0.0
102806377	IRa01	2454134.4150360 ± 0.000218	3.816674 ± 0.000023	11.265 ± 0.012	4.397 ± 0.086	14.25	A5IV	000000	0.1
102790392	IRa01	2454134.9865150 ± 0.000164	4.910225 ± 0.000024	14.116 ± 0.040	6.128 ± 0.016	15.25	G8V	010011	0.0
102828417	IRa01	2454137.7317330 ± 0.000316	9.594495 ± 0.000096	11.402 ± 0.049	6.448 ± 0.025	15.41	G8V	010011	0.0
102776386	IRa01	2454137.2178760 ± 0.001072	2.206876 ± 0.000072	5.724 ± 0.036	4.343 ± 0.031	15.89	A5V	010000	0.0
102853429	IRa01	2454136.8619940 ± 0.000949	1.638118 ± 0.000048	1.558 ± 0.020	3.538 ± 0.042	15.82	A5V	010101	0.0
102932176	IRa01	2454137.3148150 ± 0.000202	0.872226 ± 0.000006	22.059 ± 0.040	3.935 ± 0.013	15.62	A7V	010001	0.0
102818428	IRa01	2454131.2076630 ± 0.000232	7.455240 ± 0.000045	5.461 ± 0.019	6.799 ± 0.021	14.31	A5IV	010011	0.0
102849586	IRa01	2454124.1927030 ± 0.047179	29.134695 ± 0.030159	0.372 ± 0.036	5.034 ± 0.125	15.12	G8V	000000	0.1
102982347	IRa01	2454136.8916670 ± 0.000080	2.977598 ± 0.000007	11.313 ± 0.027	4.431 ± 0.009	15.67	A5IV	010001	0.0
102806577	IRa01	2454136.7657470 ± 0.000080	3.667052 ± 0.000010	14.489 ± 0.014	4.929 ± 0.006	15.28	A5IV	010000	0.0

**Notes.** The full table is available at the CDS.

**Table A.6.** Contact binaries parameters.

CoRoT-ID	Run	Epoch (BJD)	Period (days)	Depth (%)	<i>r</i> -mag	Spectral type	
102794135	IRa01	2454134.8450650 ± 0.000006	0.263893		7.474	14.14	F6V
102846142	IRa01	2454134.6527860 ± 0.000267	0.410900	±0.000003	21.024	15.00	A5IV
102725806	IRa01	2454134.7549890 ± 0.000016	0.341804	±0.000001	11.416	15.22	F5V
102897917	IRa01	2454134.8277380 ± 0.000006	0.445615	±0.000001	27.168	15.72	G2V
102924081	IRa01	2454137.8810640 ± 0.000285	0.373480	±0.000003	33.998	12.36	A7V
102826085	IRa01	2454137.0883200 ± 0.000021	1.026050	±0.000008	6.208	12.96	A0V
102808511	IRa01	2454137.9855420 ± 0.000005	0.239670		39.942	13.18	K0III
102955089	IRa01	2454137.8401450 ± 0.000153	0.571610	±0.000003	43.028	15.03	G2V
102910432	IRa01	2454137.9430470 ± 0.000011	0.312172		6.608	14.89	F6V
102821683	IRa01	2454136.8721520 ± 0.001160	1.810740	±0.000065	2.723	14.77	A0V
102961901	IRa01	2454137.8887300 ± 0.000536	0.420895	±0.000007	42.194	15.43	G2IV
102794063	IRa01	2454137.9682360 ± 0.000241	0.381919	±0.000003	29.092	15.57	G8V
102806220	IRa01	2454137.8889950 ± 0.000241	0.349696	±0.000003	47.727	15.70	G2IV
102806409	IRa01	2454137.9001890 ± 0.000398	0.647349	±0.000008	33.212	15.50	A0V
102861060	IRa01	2454134.0349720 ± 0.000035	1.531843	±0.000061	1.481	15.40	A0V
102738837	LRa01	2454397.3612970 ± 0.000011	0.846498	±0.000003	2.336	13.83	A5IV
102745707	LRa01	2454397.3160450 ± 0.000128	0.288539		63.638	12.80	O8III
102594134	LRa01	2454396.6893470 ± 0.000049	0.789553		0.596	13.96	A7V
102634660	LRa01 LRa06	2454396.6475250 ± 0.000019	0.850373	±0.000001	26.130	13.69	A5IV
102786829	LRa01 IRa01	2454396.7969970 ± 0.000088	0.751067	±0.000012	0.669	15.03	A5IV
102788679	LRa01 IRa01 LRa06	2454397.3766250 ± 0.000005	0.243943		8.476	13.40	F5V
102634388	LRa01 LRa06	2454396.8577070 ± 0.000013	0.635896	±0.000001	2.975	13.84	A5V
102686255	LRa01 LRa06	2454397.2253130 ± 0.000387	0.319579	±0.000002	4.120	12.94	G5III
102630432	LRa01 LRa06	2454397.3402030 ± 0.000033	0.525376	±0.000002	0.426	12.90	A5IV
102619636	LRa01 LRa06	2454395.3626110 ± 0.001408	2.622253	±0.000048	3.052	14.40	A5V
102738068	LRa01 LRa06	2454397.1967580 ± 0.000010	0.362463	±0.000001	0.911	12.95	A5IV
102674076	LRa01 LRa06	2454396.8782410 ± 0.001148	2.437481	±0.000036	5.028	14.47	B9V
102773399	LRa01 IRa01 LRa06	2454397.1120390 ± 0.000193	0.605546	±0.000002	6.117	14.49	A5V
102752468	LRa01 IRa01 LRa06	2454396.9455540 ± 0.000028	1.197437	±0.000011	0.950	15.01	A5V
102638060	LRa01 LRa06	2454397.1716330 ± 0.000031	0.283966		10.563	15.17	G2V
102760539	LRa01 IRa01 LRa06	2454397.2917380 ± 0.000007	0.227565		17.603	15.52	G2IV
102661163	LRa01 LRa06	2454396.9803400 ± 0.000069	1.510652	±0.000021	0.321	13.42	A0V
102798366	LRa01 IRa01	2454135.4774940 ± 0.000024	0.395632		2.764	15.10	F8IV
110666679	LRa02	2454787.0909840 ± 0.000009	0.358187		4.982	12.82	A5V
300002276	LRa02	2454786.2503730 ± 0.001636	1.482793	±0.000038	0.388	12.59	A5IV
102915357	LRa02	2454787.1513500 ± 0.000158	0.541430	±0.000010	0.109	13.53	A5IV
110833565	LRa02	2454786.7797200 ± 0.002498	1.984232	±0.000077	1.144	13.62	F8IV
110753852	LRa02	2454787.1485570 ± 0.004852	0.393419	±0.000029	8.060	13.91	G0IV
110672896	LRa02	2454786.6975110 ± 0.000492	1.198219	±0.000101	0.070	13.91	F5IV
110688556	LRa02	2454786.3391320 ± 0.000948	1.344077	±0.000020	1.973	13.43	F5V
110663705	LRa02	2454786.7562770 ± 0.000014	0.808755	±0.000002	28.583	13.63	G2IV
110766755	LRa02	2454787.1030840 ± 0.000060	0.761902	±0.000007	0.633	13.74	A5V
110741580	LRa02	2454787.1133000 ± 0.000409	0.644416		0.834	14.12	A0V
110750397	LRa02	2454787.1746930 ± 0.000008	0.364125		6.724	14.90	K1III
110834449	LRa02	2454786.5668850 ± 0.000034	1.214411	±0.000018	1.752	14.57	K2III
110756288	LRa02	2454786.3727370 ± 0.000205	1.242877	±0.000043	0.553	15.32	K0III
110844293	LRa02	2454786.9822300 ± 0.000035	1.071085	±0.000011	1.383	14.46	F2II
300001585	LRa02	2454787.1861850 ± 0.000150	0.387078	±0.000004	0.304	13.81	G5IV
110656884	LRa02	2454786.0741520 ± 0.000197	1.241899	±0.000044	0.927	14.25	A5IV

**Notes.** The full table is available at the CDS.