



HAL
open science

**Introduction of a new potential invader into the
Mediterranean Sea: the Indo-Pacific *Avrainvillea
amadelpa* (Montagne) A. Gepp & E.S. Gepp
(Dichotomosiphonaceae, Ulvophyceae)**

Marc Verlaque, Habib Langar, A. Ben Hmida, Christine Pergent, Gerard
Pergent

► **To cite this version:**

Marc Verlaque, Habib Langar, A. Ben Hmida, Christine Pergent, Gerard Pergent. Introduction of a new potential invader into the Mediterranean Sea: the Indo-Pacific *Avrainvillea amadelpa* (Montagne) A. Gepp & E.S. Gepp (Dichotomosiphonaceae, Ulvophyceae). *Cryptogamie Algologie*, 2017, 38 (3), pp.267-282. 10.7872/crya/v38.iss3.2017.267 . hal-01976067

HAL Id: hal-01976067

<https://hal.science/hal-01976067>

Submitted on 9 Jan 2019

HAL is a multi-disciplinary open access archive for the deposit and dissemination of scientific research documents, whether they are published or not. The documents may come from teaching and research institutions in France or abroad, or from public or private research centers.

L'archive ouverte pluridisciplinaire **HAL**, est destinée au dépôt et à la diffusion de documents scientifiques de niveau recherche, publiés ou non, émanant des établissements d'enseignement et de recherche français ou étrangers, des laboratoires publics ou privés.

Introduction of a new potential invader into the Mediterranean Sea: the Indo-Pacific *Avrainvillea amadelpha* (Montagne) A. Gepp & E.S. Gepp (Dichotomosiphonaceae, Ulvophyceae)

Marc VERLAQUE^{a*}, Habib LANGAR^b, Ahmed BEN HMIDA^c,
Christine PERGENT^d & Gérard PERGENT^d

^aAix-Marseille University, CNRS, University of Toulon, IRD,
Mediterranean Institute of Oceanography (MIO),
UM 110 & GIS POSIDONIE, 13288 Marseille, France

^bUniversité de Tunis El Manar, Faculté des Sciences de Tunis,
2092, Tunis, Tunisia

^cAPAL – Agence de Protection et d'Aménagement du Littoral,
02 1002 Belvédère, rue Mohamed Rachid Ridha, Tunis, Tunisia

^dFRES 3041, EqEL, Faculty of Science, University of Corsica,
BP 52, 20250 Corte, France

Abstract – The Indo-Pacific species *Avrainvillea amadelpha* (Montagne) A. Gepp & E.S. Gepp is reported for the first time from the Mediterranean Sea (Kerkennah Islands, Tunisia). The species is considered as introduced and invasive in the Hawaiian Archipelago. The Mediterranean specimens are studied and the reproductive structures are described and illustrated here for the first time. The possible origins and vectors of this introduction and the risk of propagation of the species in the Mediterranean Sea are discussed.

Avrainvillea amadelpha / Ulvophyceae / Tunisia / Mediterranean / Introduced species / Invasive species

Résumé – L'espèce Indo-Pacifique *Avrainvillea amadelpha* (Montagne) A. Gepp & E.S. Gepp, est signalée pour la première fois en Méditerranée (Îles Kerkennah, Tunisie). L'espèce est considérée comme introduite et invasive dans l'archipel Hawaïien. Les spécimens méditerranéens sont étudiés et les organes reproducteurs sont décrits et illustrés pour la première fois. Les origines et les vecteurs possibles de cette introduction sont discutés, ainsi que les risques de propagation de l'espèce en Méditerranée.

Avrainvillea amadelpha / Ulvophyceae / Tunisie / Méditerranée / Espèce introduite / Espèce invasive

INTRODUCTION

With nearly 1 000 marine introduced taxa identified, the Mediterranean Sea is one of the regions of the world most severely impacted by the introduction of species (Zenetos *et al.*, 2010, 2012, 2017). In 2017, the number of marine macrophytes introduced into the Mediterranean Sea amounts to around 120-130 taxa (Verlaque *et al.*, 2015; M. Verlaque, unpub. data).

Within the framework of a Program of the RAC/SPA (Regional Activity Centre for Specially Protected Areas) and the University of Corsica, carried out on the coast of Tunisia, a species of *Avrainvillea* Decaisne (Decaisne, 1842), a tropical genus hitherto unknown in the Mediterranean Sea, has been discovered in the region of Kerkennah Islands. The alga was identified as *A. amadelpha* (Montagne) A. Gepp & E.S. Gepp, a tropical species widely distributed in the Indo-Pacific Ocean. The aim of the present study is to report the species for the first time from the Mediterranean Sea and to describe the Mediterranean population and its ecology. The possible origins and pathways of introduction are considered. The risks of further spread of the species in the Mediterranean Sea are discussed.

MATERIAL AND METHODS

Avrainvillea amadelpha was found and sampled during the field monitoring campaigns of the lower limits of *Posidonia oceanica* (L.) Delile beds of the Kerkennah Archipelago in Tunisia (MedPosidonia and CHANGE Programs set up by the RAC/SPA and the FRES 3041 – University of Corsica) (Pergent *et al.*, 2014) (Fig. 1). The seawater temperature was recorded on a continuous basis (24 measures. day⁻¹) at the lower limit of a *P. oceanica* bed of the archipelago from 2008 to 2015.

Sampling and studies of the *A. amadelpha* population were carried out by SCUBA diving in July 2015. Specimens sampled by one of us (H.L.) were transferred

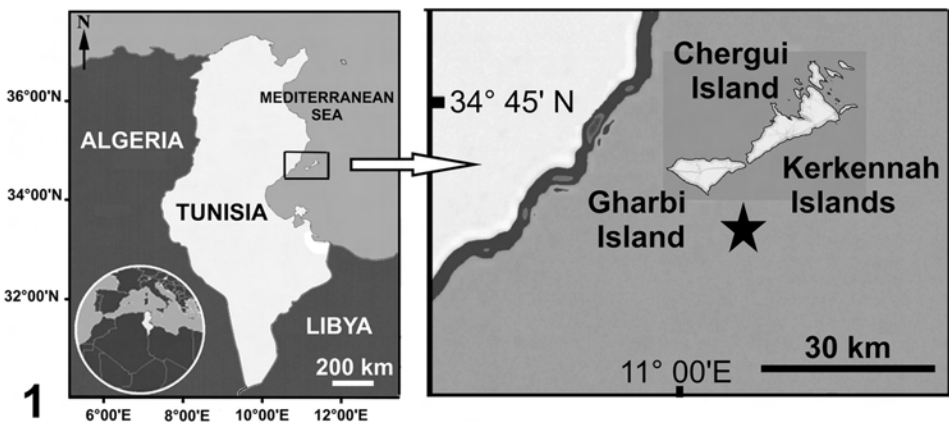


Fig. 1. Study area in Tunisia with detail of the Kerkennah Islands region. Star: location of the first population of *Avrainvillea amadelpha* (Montagne) A. Gepp & E.S. Gepp discovered in the Mediterranean Sea.

to the laboratory in seawater, before being cleaned, pressed and dried. Anatomical studies were carried out under the binocular and light microscopes after re-hydration. Measurements and photomicrographs were made using a Coolpix 995 Nikon® digital camera and an Optiphot-2 Nikon® light microscope. Voucher dried specimens were deposited in the Verlaque Herbarium (HCOM), Marseille, France, with the following references:

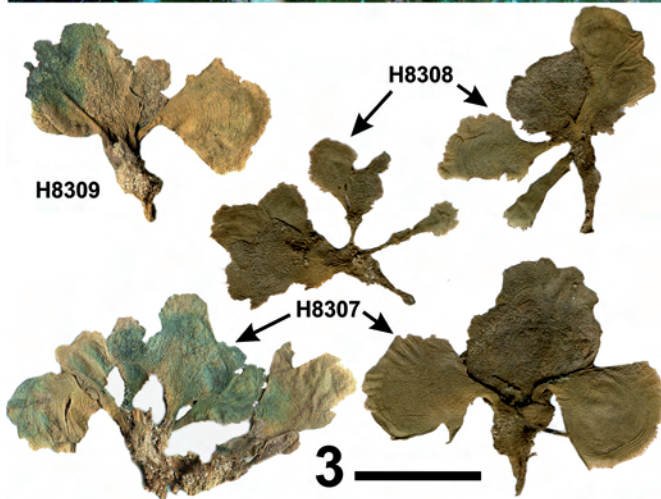
– H8307 to H8309, *Avrainvillea amadelpha* (Montagne) A. Gepp & E.S. Gepp, collection Habib Langar, Tunisia, Kerkennah Archipelago, off Gharbi Island (GPS location: 34° 31' 2.20" N and 11° 07' 1.60" E), 26 July 2015, 22 m depth, at the lower limit of the *Posidonia oceanica* meadow, fertile (Fig. 2).

The Tunisian material was compared with photographs of *A. amadelpha* specimens deposited in the Cryptogamic Herbarium of the Muséum National d'Histoire Naturelle, Paris (PC), especially those from Red Sea, with the following references:

– PC0502136 – *Avrainvillea amadelpha* Gepp, collection Islam Elmanawy, Suez Canal, Egypt, July 1988;



Fig. 2. *Avrainvillea amadelpha* (Montagne) A. Gepp & E.S. Gepp growing on a dead matte of *Posidonia oceanica* (L.) Delile off Gharbi Island (Kerkennah Islands), July 2015, 22 m depth. Figure 3. Pressed habit of fertile Tunisian specimens of *Avrainvillea amadelpha* (specimens H8307 to H8309, Herbarium HCOM, Aix-Marseille University). Bar = 5 cm.



– PC0502137 – *Avrainvillea amadelpha* (Mont.) A & E.S. Gepp, collection J.F. Papenfuss, Israel South Red Sea Expedition, determination J.F. Papenfuss and Y.M. Chiang, Romia Islet, Dhalak Archipelago, Eritrea, Red Sea, 29 March 1962;
– PC0502138 – *Avrainvillea amadelpha* Gepp, collection Gruvel, Grand Lac Amer (Great Bitter Lake), Egypt, 1932.

Herbarium abbreviations follow Thiers (2014).

DNA extractions from dry material and amplification of the TufA gene were performed as previously (Vieira *et al.* 2016).

RESULTS

Avrainvillea amadelpha (Montagne) A. Gepp & E.S. Gepp

Reference: Gepp & Gepp (1911), pp. 42-44, figs 112-115.

Basionym: *Udotea amadelpha* Montagne (1857), p. 136. Type locality: Agalega Islands, NE of Madagascar, Indian Ocean.

Heterotypic synonyms: *Chloroplegma sordidum* Zanardini (1858), p. 83, figs 1, 1a-c. Type locality: Suez, Tor, Red Sea.

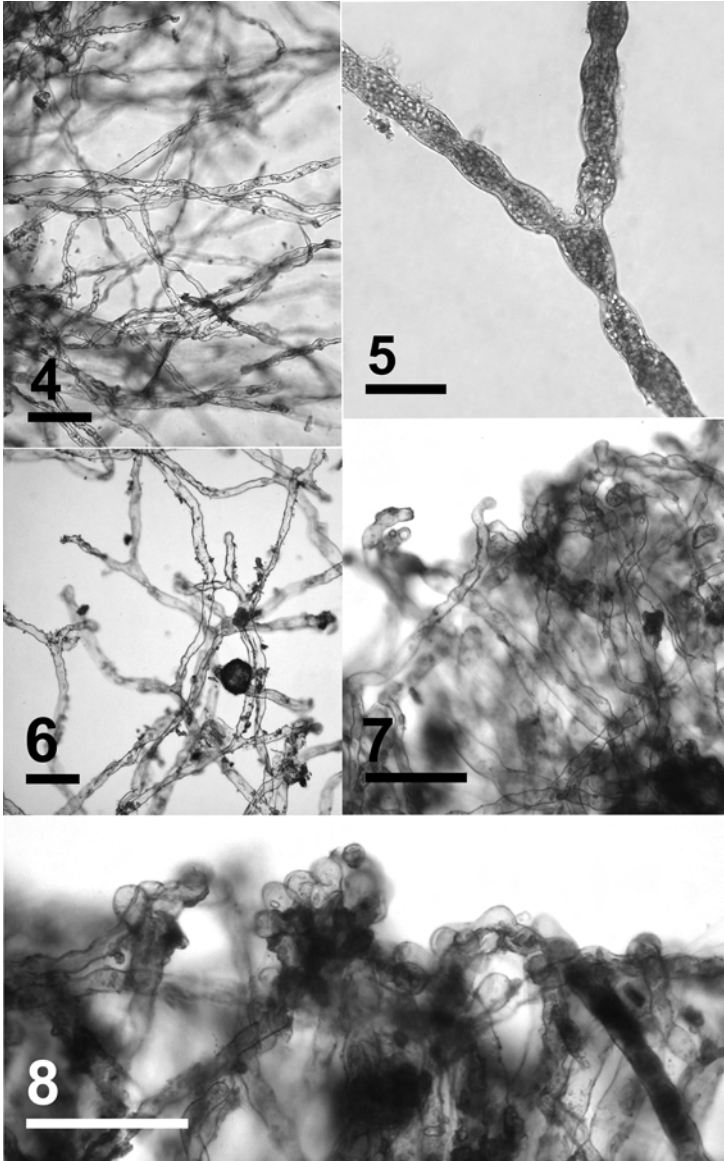
Avrainvillea lacerata Harvey ex J. Agardh f. *robustior* A. Gepp & E.S. Gepp (1911), pp. 38-39, figs 108-109. Type locality: Singapore, Indian Ocean.

Description of the Mediterranean material

Plant forming clusters; thallus non-calcified, 7-12 cm tall, differentiated into holdfast, stipes and blades; holdfast developed into mat from which numerous stipes arise; stipes once to twice-branched; each branch bearing a simple terminal blade; blades spongy, thin, entire, sub-cuneate to flabellate, dark green to olive brown, zonate, 2.5-6.0 cm wide; growing margins smooth or slightly eroded (Figs 2-3); thallus composed of intertwined non-septate filaments (siphons); siphons cylindrical to torulose, tapering upwards, 25-18 μm to 12.0-16.0 (-20) μm in diameter (measurements on segments between two consecutive dichotomies) (Fig. 4); siphons dichotomously branched with dichotomies deeply constricted (Fig. 5); distance between dichotomies decreasing upwards resulting in a highly ramified terminal region, referred to as a pseudocortex, near the surface of the blade; apices of siphons rounded (Figs 6-8); presence of tiny sand grains trapped between the filaments of holdfasts, stipes and lower part of blades; gametangia subspherical to ovoid, 22-36 μm long and 27-32 μm in diameter, shortly pedicellate and laterally inserted on the filament, frequently below a dichotomy (Figs 9-12); basal septum, division of gametangium contain and emission of gametes not observed. The amplification of the TufA gene failed (Line Le Gall, pers. com.).

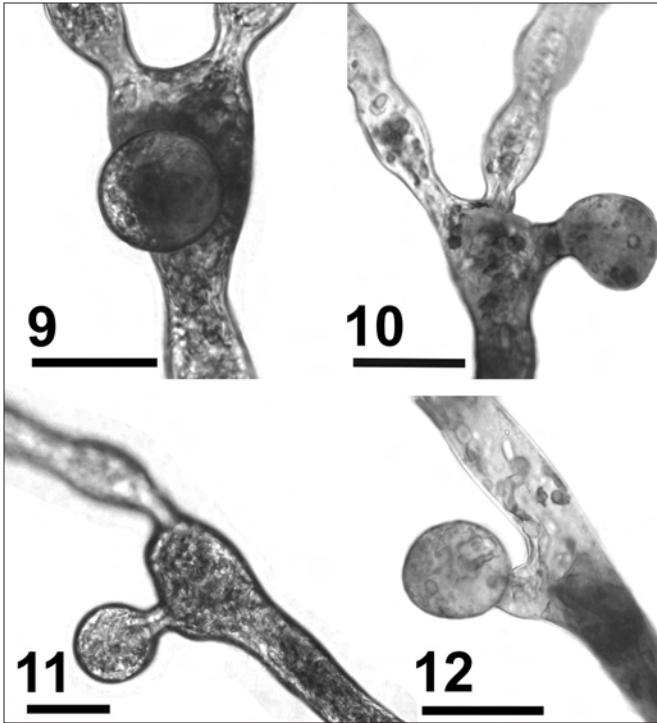
Ecology

The alga was common and was growing gregariously in colonies, between 20-22 m depth, in sunny places (sub-horizontal substrates), in *Cymodocea nodosa* (Ucria) Ascherson meadows, *Posidonia oceanica* beds, on dead mattes of *P. oceanica* meadows and coarse sand bottoms, in association with *Dictyota implexa* (Desfontaines) J.V. Lamouroux, *Flabellia petiolata* (Turra) Nizamuddin, *Jania*



Figs 4-8. Anatomy of Tunisian specimens of *Avrainvillea amadelpha* (Montagne) A. Gepp & E.S. Gepp. **4.** Intertwined non-septate filaments (siphons) of the blade. Bar = 100 μm . **5.** Torulose filament with a deeply constricted dichotomy. Bar = 50 μm . **6.** Detail of the upper part of filaments showing the upward decreasing distances between dichotomies. Bar = 100 μm . **7-8.** Detail of the growing margin with filaments organized in pseudocortex. Bars = 100 μm .

adhaerens J.V. Lamouroux, *Penicillus capitatus* Lamarck, and the invasive exotic species *Caulerpa cylindracea* Sonder and *Pinctada imbricata radiata* (Leach, 1814). At the lower limit of the *Posidonia oceanica* beds, the seawater temperature varied between 12.9-14.8 $^{\circ}\text{C}$ in winter and 28.0-29.5 $^{\circ}\text{C}$ in summer (2008-2015 data).



Figs 9-12. Reproductive structures of Tunisian specimens of *Avrainvillea amadelpha* (Montagne) A. Gepp & E.S. Gepp. **9-10.** Shortly pedicellate gametangia inserted laterally at the base of a dichotomy. Bars = 30 µm. **11-12.** Shortly pedicellate gametangia inserted laterally on a filament. Bars = 30 µm.

DISCUSSION AND CONCLUSION

The Mediterranean specimens of *Avrainvillea* are in good agreement with descriptions and illustrations of *A. amadelpha* (Montagne) A. Gepp & E.S. Gepp (Gepp & Gepp, 1911; Olsen-Stojkovich, 1985; Coppejans & Prud'homme van Reine, 1989; De Clerck & Coppejans, 1996; Littler & Littler, 2003; Abbott & Huisman, 2004; Huisman *et al.*, 2007; Coppejans *et al.*, 2009), especially those from the Red Sea (Zanardini, 1858; Nasr, 1947; Aleem, 1978b, 1980), and with the Red Sea specimens deposited in the PC herbarium.

On the basis of a morphological analysis, Olsen-Stojkovich (1985) distributed the species of *Avrainvillea* in different groups. *Avrainvillea amadelpha* belongs to the '*longicaulis* group', along with *A. asarifolia* Børgesen, *A. calathina* Kraft & Olsen-Stojkovich, *A. carteri* Huisman, *A. lacerata* Harvey ex J. Agardh, *A. levis* M. Howe, *A. longicaulis* (Kützing) G. Murray & Boodle and *A. pacifica* A. Gepp & E.S. Gepp (Agardh, 1887; Murray & Boodle, 1889; Howe, 1905; Børgesen, 1909; Gepp & Gepp, 1911; Kraft & Olsen-Stojkovich, 1985; Olsen-Stojkovich, 1985; Huisman, 2015). Characteristics of the '*longicaulis*' group are (i) stipes simple to branched once to many times near base, each branch bearing a single terminal blade, (ii) siphons cylindrical moniliform, torulose to tortuous, and (iii) siphon dichotomies deeply constricted. *Avrainvillea amadelpha* differs from the other members of the '*longicaulis*' group by the following combination of diagnostic

features: growth in cluster (gregarious carpet); holdfast mat-like; stipe mostly branched; blades spongy and thin; growing margins smooth; siphons 25 μm to 12 μm in diameter; and pseudocortex present (Table I). The two closest species are *A. carteri* and *A. lacerata*, but the first has the stipes mostly unbranched, the blades spongy and firm and the siphons thinner, 30 μm to 5 μm , and the second has the blades without zonation, the growing margins lacerate, the siphons thinner, 28 μm to 6 μm , and does not possess pseudocortex (Table I). In another group, namely the 'nigricans' group *sensu* Olsen-Stojkovich (1985), *A. mazei* G. Murray & Boodle (Murray & Boodle, 1889) shares certain characters with *A. amadelpa* (thallus differentiated into holdfast, stipe and blade; thallus forming gregarious carpets; holdfast mat-like; stipes sometimes branched; blades spongy; growing margins smooth; and siphon dichotomies deeply constricted), but it differs by the greater size, up to 25 cm tall, including stipes up to 16 cm long, the blades never zonate, the siphons predominantly cylindrical and thicker (65 μm to 28 μm), and by the absence of pseudocortex (Olsen-Stojkovich, 1985).

Observations on the reproduction of *Avrainvillea* spp. are very few. Vegetative propagation is more common and constant throughout the year (Olsen-Stojkovich, 1985; Guiry & Guiry, 2017). The life history of the genus has not been experimentally verified. Fragmentary observations strongly suggest holocarpy, with a reproductive cycle similar to udoteacean genera, i.e. a dioecious diploid erect thallus in which meiosis precedes gametogenesis (Young, 1977; Olsen-Stojkovich, 1985). Two types of gametangia, terminal or lateral, were described according to the species. The first and the most frequent type, the terminal type, was observed in *A. nigricans* Decaisne (type species of the genus), *A. asarifolia* Borgesen, *A. asarifolia* f. *olivacea* D.S. Littler & Littler, *A. digitata* D.S. Littler & Littler, *A. erecta* (Berkeley) A. Gepp & E.S. Gepp, *A. fulva* (M. Howe) D.S. Littler & Littler, *A. mazei* G. Murray & Boodle, *A. obscura* (C. Agardh) J. Agardh and *A. rawsonii* (Dickie) M. Howe (Howe, 1907; Gepp & Gepp, 1911; Kusel, 1972; Young, 1977; Olsen-Stojkovich, 1985; Littler & Littler, 1992; Cabrera Garcia, 2009-2010; Cabrera *et al.*, 2012). In this group, terminal gametangia result from the transformation of one apical branch of a dichotomy, the other branch undergoing two or three more dichotomies. Gametangia are clavate, i.e. elongated, narrowing toward the base and gradually expanded toward the apex, and large (> 200-250 μm in diameter). The lateral type, which was hitherto only observed in two taxa, *A. elliotii* A. Gepp & E.S. Gepp and *A. longicaulis* f. *laxa* D.S. Littler & Littler (Cabrera *et al.*, 2012), consists in smaller gametangia, usually < 100 μm in diameter, subspherical to ovoid, shortly pedicellate and laterally inserted on the siphon. Gametangia of *A. amadelpa*, which are described here for the first time, belong to the lateral type.

The occurrence of populations of *A. amadelpa* in Tunisia is in good agreement with the hypothesis of a recent introduction because it is consistent with the criteria proposed by Ribera & Boudouresque (1995): (i) the species had never been observed in the Mediterranean Sea; (ii) the first Mediterranean populations occupied a small area; and (iii) they were discovered in a hot-spot of species introductions (Southern Tunisia) where many exotic species native to the Red Sea and the Indo-Pacific Ocean have been reported (Ben Souissi & Zaouali, 2007; Zaouali *et al.*, 2007; Ben Souissi *et al.*, 2010; Oufini Ben Amor *et al.*, 2015; Sghaier *et al.*, 2016). Among the major pathways of introduction, the Suez Canal is ranked as the most important. Since its opening in 1869, the flow of Lessepsian species, i.e. Indo-Pacific species introduced into the Mediterranean Sea via the Suez Canal, has never stopped (Nunes *et al.*, 2014). The introduction of *A. amadelpa* is a new illustration of this phenomenon. In the absence of worldwide molecular data, the

Table 1. Comparison of diagnostic characters of representative *Ahrainvillea* species of the *longicaulis* group *sensu* Olsen-Stojkovich (1985). References: Agardh (1887), Howe (1905), Børgesen (1909), Gepp & Gepp (1911), Kraft & Olsen-Stojkovich (1985), Olsen-Stojkovich (1985), Littler & Littler (1992, 2003), Abbott & Huisman (2004), Huisman (2015)

	<i>A. amadei</i> (Montagne) A. Gepp & E.S. Gepp	<i>A. asarifolia</i> Børgesen	<i>A. calathina</i> Kraft & Olsen-Stojkovich	<i>A. carteri</i> Huisman	<i>A. lacerata</i> Harvey ex J. Agardh	<i>A. levis</i> M. Howe	<i>A. longicaulis</i> (Kützting) G. Murray & Boodie	<i>A. pacifica</i> A. Gepp & E.S. Gepp
Thallus	In clusters, 3-12 (-18) cm tall	Solitary to in clus- ters, 18-24 cm tall	Solitary to in clusters, 4-14 cm tall	In clusters; up to 6 cm tall	In clusters, 3-8 cm tall	Solitary, seldom double, 6 cm tall	Mostly solitary, 12-26 cm tall	Solitary, 4-8 cm tall
Color	Olive to brown olive	Dark olive	Dark olive green	Olive to brownish green	Light green to olive	Grey green to yellow green	Yellow green-yellow brown	Brownish green
Holdfast	Extensive mat-like	Bulbous to mat-like	Bulbous	Mat-like	Bulbous to mat-like	Small conical mass	Rhizomatous, bulbous	Rhizomatous, bulbous
Stipes	Mostly branched	Unbranched	Mostly unbranched	Mostly unbranched	Branched	Unbranched	Mostly unbranched	Unbranched
Blades	Thin, spongy, mostly cuneate, 4-5 cm wide	Thick, velutinous, often perfectly reniform, 5-6 cm wide	Firm, oblong-cune- ate to subplateate and strongly concave at base (scoop-shaped), 1-6 cm wide	Spongy to firm, subcuneate, reniform or subcircular, up to 4.5 cm wide	Thin, papery, cuneate, occasionally obovate 2-3 cm wide	Thin, velutinous, reniform to obovate, with shallowly cordate base, 6.5 cm wide	Thick, velutinous, spatulate to obovate, with cuneate to truncate base, 3-8 (-10.5) cm wide	Spongy, velutinous, reniform to occasionally cuneate, 5-8 cm wide
Zonation	Present	Present	Present	Faintly zonate near the margins	Absent	Absent to faintly zonate	Absent	Present
Growing margin	Smooth lobed	Smooth lobed to lacerate	Smooth, irregularly lobed to lacerate	Smooth lobed	Distinctly lacerate	Smooth	Smooth lobed	Smooth
Siphons	Cylindrical mon- oiform to torulose, tapering towards surface, 2.5-19 µm to 12-15 µm	Cylindrical, slightly moniliform to torulose, tapering towards surface, 40-30 µm to 8-12 µm	Cylindrical, mon- oiform to torulose, tapering towards surface, 30-12 µm to 5-8 (-16) µm	Cylindrical to to- rulose, tapering to- wards surface, 30-12 µm to 5-7 (-10) µm	Cylindrical to torulose-tortuous, tapering towards surface, 28-19 µm to 6-9 (-12 µm)	Cylindrical, slightly moniliform to tortu- ous, tapering towards surface, 2.5-35 (-40) µm to 8-12 µm	Cylindrical to torulose-tortuous, tapering towards surface, 60-35 µm to 15-25 (-42) µm	Torulose, tapering towards surface, 28-19 µm to 9 µm
Dichotomies	Shallowly to deeply constricted	Deeply constricted	Deeply constricted to shallowly or not constricted	Shallowly constricted	Deeply constricted	Deeply constricted	Deeply constricted	Shallowly constricted
Apices	Rounded	Tapered to threadlike	Rounded	Rounded	Pointed, torn away	Rounded	Rounded or pointed	Twisted and hooked
Pseudocortex	Present	Absent	Present	Present	Absent	Present	Absent	Absent
Distribution	Indo-Pacific	Atlantic	Pacific	Indian Ocean	Indo-Pacific	Atlantic	Pan-tropical	Pacific

identification of the donor region is not possible. New sequencing attempts will be considered with other genes (*rbcL*). However, the Red Sea appears as a good candidate, *A. amadelpha* being native and common in this sea (Zanardini, 1858, as *Chloroplegma sordidum*; Harvey-Gibson, 1908; Harvey-Gibson & Knight, 1913, as *A. lacerata*; Nasr, 1947; Rayss, 1959; Papenfuss, 1968; Aleem, 1978a & b; Lipkin & Silva, 2002). Moreover, it has been growing in the Suez Canal at least since the early 20th century (Lami, 1932, confirmed by the herbarium specimen PC0502138; Lipkin, 1972; Aleem, 1980). Several potential vectors of species introduction have been considered in southern Tunisia: currents, shipping (via fouling and ballast water), pleasure boating and aquaculture (Oufini Ben Amor *et al.*, 2015). In general, psammophytic macroalgae such as *Avrainvillea* spp. do not appear to have the mechanisms for long-distance dispersal such as those shown by hitch-hiking boat foulers, pelagic algae or species with long-lived resistant spores (Littler & Littler, 1992). Only man-made structures that remain for a long time in the same place, such as pontoons, pipelines, drilling and production platforms, seem to be suited to colonisation by *Avrainvillea*. In the case of *A. amadelpha*, the first Mediterranean observation at the Kerkennah Islands, a considerable distance from the Suez Canal, in spite of phycological field studies conducted along the Egyptian and Libyan coasts (Nizamuddin *et al.*, 1979; Shameel, 1983; Nizamuddin, 1991; Godeh *et al.*, 1992; Aleem, 1993; Bazairi *et al.*, 2013) suggests a direct introduction from the Red Sea to Tunisia through human activities. Southern Tunisia and western Libya constitute a major Mediterranean region of oil and gas production, with several petroleum terminals and offshore oil and gas exploitation facilities (Ben Souissi & Zaouali, 2007; Oufini Ben Amor *et al.*, 2015). Consequently, the introduction of *A. amadelpha* and exotic invertebrates directly from oil and gas production sites in the Red Sea via drilling or production platforms, or recycled pipelines, would appear to be a possible scenario.

Every time we are faced with a new introduction, we have to answer to the question: what are the risks of invasion?

In the global distribution of marine species, there are two different types of temperature boundaries, namely the lethal boundaries and the growth and/or reproduction boundaries (Hutchins, 1947; Hoek & Breeman, 1990). Lethal boundaries are set by the species' capacity to survive during the adverse season (i.e. the cold season for a warm-water species). Macroalgal species with tropical to warm temperate distribution patterns have a lower temperature tolerance limit of 10°C to 15°C (Cambridge *et al.*, 1987, 1990a, b; Breeman, 1988; Pakker *et al.*, 1995). In the case of *A. amadelpha*, the 15°C winter isotherm corresponding to the mean sea-surface temperature of the coldest month does correlate well with the limits of its global distribution (Fig. 13). So if we consider the coldest sea-surface temperatures (data from February), a large part of the Mediterranean Sea that never drops below 15°C, is compatible with the temperature requirements of *A. amadelpha* (Fig. 14).

In tropical seas, *A. amadelpha* grows on a wide range of substrates (rocks, reef crests, dead corals, rock crevices, coral rubble, mangroves, sandy reef flats, sand plains, sandy muds and seagrass beds), from the intertidal zone down to 50 m (– 90 m) depth (Gepp & Gepp, 1911; Smith *et al.*, 2002; Littler & Littler, 2003; Abbott & Huisman, 2004; Coppejans *et al.*, 2004, 2009; Godwin *et al.*, 2006; Huisman *et al.*, 2007; Menza *et al.*, 2010; Spalding, 2012). The species has been observed all year round (Abbott & Huisman, 2004; Peyton, 2009). Except for *A. calathina*, which can be heavily grazed, most species of *Avrainvillea* produce toxic secondary metabolites and appear to be grazer-resistant (Sun *et al.*, 1983; Kraft & Olsen-Stojkovich, 1985; Littler & Littler, 1992). Only highly specialised herbivores

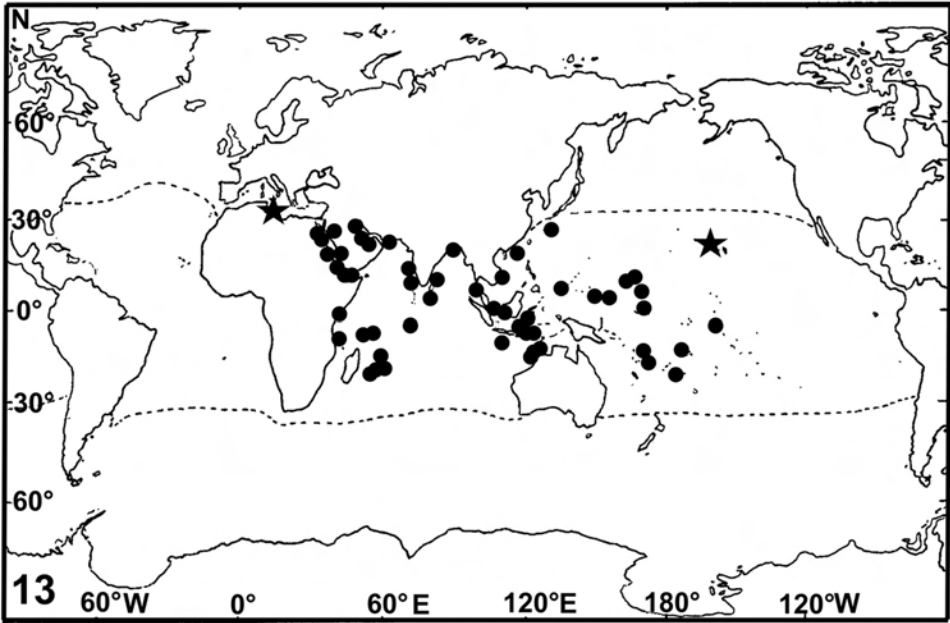


Fig. 13. World distribution of *Avrainvillea amadelpha* (Montagne) A. Gepp & E.S. Gepp according to Aleem (1978a & b, 1980), Coppejans & Prud'homme van Reine (1989), Verheij & Erfemeijer (1993), De Clerck & Coppejans (1996), N'Yeurt (1996), Saifullah (1996), Coppejans *et al.* (2000), Hodgson & McDermid (2000), Aungtonya & Liao (2002), Tsuda (2002), Tsuda *et al.* (2008), Lee *et al.* (2009), Kaladharan *et al.* (2011), Xia *et al.* (2013), Aziz *et al.* (2015), and references in Guiry & Guiry (2017). Stars: locations of introduced populations. Broken lines: 15°C winter isotherm corresponding to the mean sea-surface temperature of the coldest month according to Gorshkov (1976, 1978, 1980).

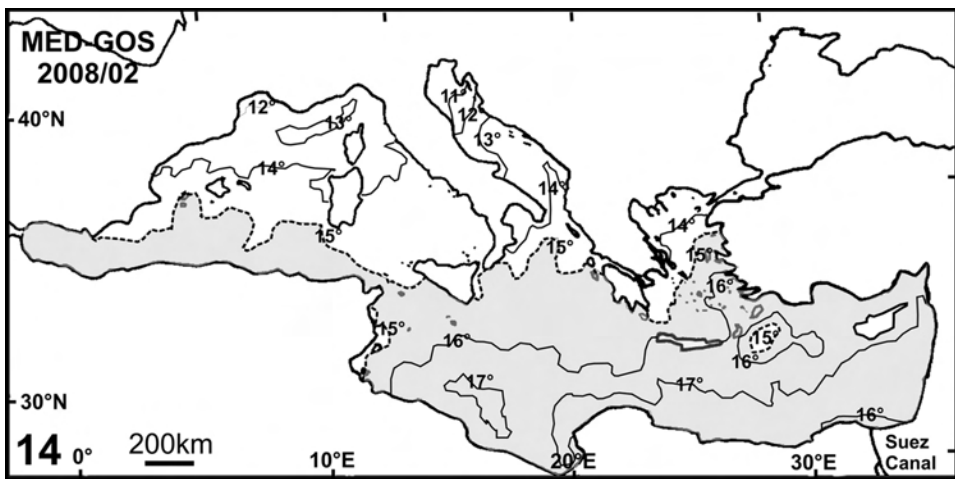


Fig. 14. Mean sea-surface temperature isotherms of the coldest month in the Mediterranean Sea (data from February 2008). Measurements obtained by available satellite infrared sensors developed and distributed by the Gruppo di Oceanografia da Satellite (GOS) (Alhammad *et al.*, 2012). Shaded area: region with sea-surface temperatures higher than 15°C.

belonging to Sacoglossan gastropods and decapods are capable of ingesting them (Hay *et al.*, 1990).

Avrainvillea amadelpha is considered as introduced and invasive in the Hawaiian Archipelago (Brostoff, 1989; Huisman *et al.*, 2007). The species spread rapidly along the southern shore of the island of its first record (O‘ahu Island), and it extended its range to the neighbouring Kaua‘i Island (Smith *et al.*, 2002; Godwin *et al.*, 2006). *Avrainvillea amadelpha* traps large quantities of sediment between its holdfast and significantly increases the sedimentation rate (Martinez *et al.*, 2009). In some Hawaiian areas, *A. amadelpha* accounted for up to 100% cover, forming extensive mounds with soft sediment more than 30 m in diameter at the margin of *Halophila hawaiiiana* Doty & B.C. meadows, stone beds and on coral patches (Peyton, 2009; Spalding, 2012). In invaded areas, changes in the community composition and overgrowths of *H. hawaiiiana* meadows, *Halimeda* spp. beds and coral patches have been reported (Godwin *et al.*, 2006; Longenecker *et al.*, 2011; Spalding, 2012).

CONCLUSION

Avrainvillea amadelpha is a species possessing a very high development potential: (i) wide ecological niche; (ii) gregarious perennial thallus; (iii) high competition capability; (iv) high resistance to grazing; (v) capability to change the composition of communities and to alter habitats through sedimentation increase; (vi) it reproduces in Tunisia; and (vii) it is invasive in the Hawaiian Archipelago. In the Mediterranean Sea, it seems to be capable of colonizing the southern and the eastern basins, except for the coldest waters of the north-western Aegean Sea. In conclusion *A. amadelpha* must be regarded as a new potential invader in the Mediterranean Sea and therefore calls for special attention.

Acknowledgements. This work was funded through the MedPosidonia and CHANGE Programs set up by the RAC/SPA and the FRES – University of Corsica. The authors wish to thank Michèle Perret-Boudouresque for documentation assistance, Prof. Bruno de Reviers and Dr B. Denetièrè of the Museum National d’Histoire Naturelle (Paris) for permission to consult the collections of *A. amadelpha* through the Sonnerat database (<https://science.mnhn.fr/all/search>), and Michael Paul for revising the English. Many thanks go to the anonymous reviewers for their comments and constructive criticism of the manuscript.

REFERENCES

- ABBOTT I.A. & HUISMAN J.M., 2004 — *Marine green and brown algae of the Hawaiian Islands*. Bishop Museum Press, 260 p.
- AGARDH J.G., 1887 — Till algermes systematik. Nya bidrag. (Femte afdelningen.). *Acta universitatis Lundensis* 23(2): 1-174, 5 pls.
- ALEEM A.A., 1978a — Contributions to the study of the marine algae of the Red Sea. I. Algae in the neighbourhood of Al-Ghardaqa, Egypt. (Cyanophyceae, Chlorophyta and Phaeophyta). *Bulletin faculty sciences, King Abdulaziz university, Jeddah* 2: 73-88.
- ALEEM A.A., 1978b — Contributions to the study of the marine algae of the Red Sea. III. Marine Algae from Obhor, in the vicinity of Jeddah, Saudi Arabia. *Bulletin faculty sciences, King Abdulaziz university, Jeddah* 2: 99-118.

- ALEEM A.A., 1980 — Contributions to the study of the marine algae of the Red Sea. IV – Algae and seagrasses inhabiting the Suez Canal. *Bulletin of the faculty of science King Abdul Aziz university* 4: 31-89, 8 pls.
- ALEEM A.A., 1993 — *Marine algae of Alexandria, Egypt*. Alexandria: Privately published. [i-iv], [1]-135 p.
- ALHAMMOUD B., ARSOUZE T., BEUVIER J., BERANGER K., BOURDALLE-BADIE R., DRILLET Y., DROBINSKI P., FERRY N., LEBEAUPIN-BROSSIER C., LYARD F. & SOMOT S., 2012 — *Mediterranean Atlas of MED12 Sea Surface Temperature Compared to GOS dataset. GLORYS1 global ocean reanalysis*. HyMeX International Program & MED-CORDEX Program, ENSTA ParisTech, LMD, Legos, MERCATOR & Météo France, 159 p.
- AUNGTONYA C. & LIAO L.M., 2002 — Marine flora (algae and seagrasses) in the reference collection of the Phuket Marine Biological Center, Thailand. *Phuket marine biology center research bulletin* 64: 65-80.
- AZIZ A., TOWHIDY S. & ALFASANE Md. A., 2015 — Sublittoral seaweed flora of the St. Martin's Island, Bangladesh. *Bangladesh journal botany* 44: 223-236.
- BAZAIRI H., SGHAIER Y.R., BENAMER I., LANGAR H., PERGENT G., BOURASS E.M., VERLAQUE M., BEN SOUSSI J. & ZENETOS A., 2013 — Alien marine species of Libya: first inventory and new records in El-Kouf National Park (Cyrenaica) and the neighbouring areas. *Mediterranean marine science* 14 (2): 451-462.
- BEN SOUSSI J. & ZAOUALI J., 2007 — Sur la présence de nouvelles espèces exotiques dans la Grande et la Petite Syrte. *Rapport Commission internationale pour l'exploration scientifique de la Mer Méditerranée* 38: 435.
- BEN SOUSSI J., KAHRI C., BEN SALEM M. & ZAOUALI J., 2010 — Les espèces non indigènes du macrobenthos des lagunes du sud-est tunisien: point sur la situation. *Rapport Commission internationale pour l'exploration scientifique de la Mer Méditerranée* 39: 449.
- BØRGESEN F., 1909 — The species of *Avrainvillea* hitherto found on the shores of the Danish West Indies. *Videnskabelige meddelelser fra Dansk naturhistorisk forening i Kjøbenhavn* 1908: 27-44, pls I-III.
- BREEMAN A.M., 1988 — Relative importance of temperature and other factors in determining geographic boundaries of seaweeds: experimental and phenological evidence. *Helgoländer Wissenschaftliche meeresuntersuchungen* 42: 199-241.
- BROSTOFF W.N., 1989 — *Avrainvillea amadelpha* (Codiales, Chlorophyta) from Oahu, Hawaii. *Pacific science* 43: 166-169.
- CABRERA R., ALFONSO Y., MARTÍNEZ-DARANAS B. & SUÁREZ A.M., 2012 — Estructuras reproductoras y epifitas del género *Avrainvillea* en aguas cubanas. *Revista de investigaciones marinas* 32: 24-29.
- CABRERA GARCIA R., 2009-2010 — Presencia de esporangióforos maduros en *Avrainvillea asarifolia* (Chlorophyta, Bryopsidales). *Revista del jardín botánico nacional* 30-31: 235-237.
- CAMBRIDGE M.L., BREEMAN A.M., KRAAK S. & HOEK VAN DEN C., 1987 — Temperature responses of tropical to warm temperate *Cladophora* species in relation to their distribution in the North Atlantic Ocean. *Helgoländer wissenschaftliche Meeresuntersuchungen* 41: 329-354.
- CAMBRIDGE M.L., BREEMAN A.M. & HOEK VAN DEN C., 1990a — Temperature limits at the distributional boundaries of four tropical to temperate species of *Cladophora* (Cladophorales, Chlorophyta) in the North Atlantic Ocean. *Aquatic botany* 38: 135-151.
- CAMBRIDGE M.L., BREEMAN A.M. & HOEK VAN DEN C., 1990b — Temperature limits at the distributional boundaries of European and American warm temperate *Cladophora* species (Cladophorales, Chlorophyta) in the North Atlantic Ocean. *Botanica marina* 33: 355-362.
- COPPEJANS E. & PRUD'HOMME VAN REINE W.F., 1989 — Seaweeds of the Snellius-II Expedition: Chlorophyta: Caulerpales. *Blumea* 34: 119-142.
- COPPEJANS E., LELIAERT F. & DE CLERCK O., 2000 — Annotated list of new records of marine macroalgae for Kenya and Tanzania, since Isaac's and Jaasund's publications. *Biologisch jaarboek, Dodonaea* 67: 31-93.
- COPPEJANS E., LELIAERT F., VERBRUGGEN H., DE CLERCK O., SCHILS T., DE VRIESE T. & MARIE D., 2004 — The marine green and brown algae of Rodrigues (Mauritius, Indian Ocean). *Journal of natural history* 38: 2959-3020.
- COPPEJANS E., LELIAERT F., DARGENT O., GUNASEKARA R. & DE CLERCK O., 2009 — Sri Lankan seaweeds: Methodologies and field guide to the dominant species. *ABC Taxa* 6, 265 p.
- DECAISNE M.J., 1842 — Mémoire sur les corallines ou polypiers calcifères – Essai sur une classification des algues et des polypiers calcifères de Lamouroux. *Annales des sciences naturelles, Botanique, Série 2*, 17: 297-380, pls 14-17 and 18: 89-199.

- DE CLERCK O. & COPPEJANS E., 1996 — Marine Algae of the Jubail Marine Wildlife Sanctuary, Saudi Arabia. In: Krupp F., Abuzinada A.H. & Nader I.A. (Eds), *A Marine Wildlife Sanctuary for the Arabian Gulf, Environmental Research and Conservation following the 1991 Gulf War Oil Spill*. NCWCD, Riyadh and Senckenberg Research Institute, Frankfurt a. M., pp. 199-289.
- GEPP A. & GEPP E.S., 1911 — The Codiaceae of the Siboga Expedition including a monograph of Flabellariaceae and Udoteae. *Siboga-Expedition monographie* 62: 1-150, 22 pls.
- GODEH M., NIZAMUDDIN M. & EL-MENIFI F., 1992 — Marine algae from eastern coast of Libya (Cyrenaica). *Pakistan journal of botany* 24: 11-21.
- GODWIN S., RODGERS K.S. & JOKIEL P.L., 2006 — *Reducing potential impact of invasive marine species in the North-western Hawaiian Islands marine national monument*. Honolulu. Northwest Hawaiian Islands Marine National Monument Administration, 66 p.
- GORSHKOV S.G. (Ed.), 1976 — *World Ocean Atlas 1. Pacific Ocean*. Oxford, Pergamon Press.
- GORSHKOV S.G. (Ed.), 1978 — *World Ocean Atlas 2. Atlantic and Indian Oceans*. Oxford, Pergamon Press.
- GORSHKOV S.G. (Ed.), 1980 — *World Ocean Atlas 3. Arctic Ocean*. Oxford, Pergamon Press.
- GUIRY M.D. & GUIRY G.M., 2017 — *AlgaeBase*. World-wide electronic publication, National University of Ireland, Galway. <http://www.algaebase.org>; searched on 23 February 2017.
- HARVEY-GIBSON R.J., 1908 — Reports on the Marine Biology of the Sudanese Red Sea.—IX. Algae. *Journal of the Linnean society of London, Zoology* 31(204): 76-80.
- HARVEY-GIBSON R.J. & KNIGHT M., 1913 — Reports on the Marine Biology of the Sudanese Red Sea.—IX. Algae (Supplement). *Journal of the Linnean society of London, Botany* 41(282): 305-309.
- HAY M.E., DUFY J.E., PAUL V.J., RENAUD P.E. & FENICAL W., 1990 — Specialist herbivores reduce their susceptibility to predation by feeding on the chemically defended seaweed *Avrainvillea longicaulis*. *Limnology and oceanography* 35: 1734-1743.
- HODGSON L.M. & MCDERMID K.J., 2000 — Marine plants of Pohnpei and Ant Atoll: Chlorophyta, Phaeophyta and Magnoliophyta. *Micronesica* 32: 289-307.
- HOEK C. VAN DEN & BREEMAN A.M., 1990 — Seaweed Biogeography of the North Atlantic: where are we now? In: Garbary D.J. & South G.R. (eds), *Evolutionary Biogeography of the Marine Algae of the North Atlantic*. NATO ASI Ser., G22, Berlin, Heidelberg, Springer Verlag, pp. 55-86.
- HOWE M.A., 1905 — Phycological studies – II. New Chlorophyceae, new Rhodophyceae and miscellaneous notes. *Bulletin of the Torrey botanical club* 32: 563-586, pls 23-29.
- HOWE M.A., 1907 — Phycological studies – III. Further notes on *Halimeda* and *Avrainvillea*. *Bulletin of the Torrey botanical club* 34: 491-516, pls 25-30.
- HUISMAN J.M., ABBOTT I.A. & SMITH C.M., 2007 — *Hawaiian reef plants*. University of Hawaii Sea Grant College Program, 264 p.
- HUISMAN J.M., 2015 — *Algae of Australia: marine benthic algae of north-western Australia. 1. Green and brown algae*. pp. [i]-viii, 1-320, pls 1-14. Canberra & Melbourne: ABRS & CSIRO Publishing.
- HUTCHINS L.W., 1947 — The bases for temperature zonation in geographical distribution. *Ecological monographs* 17: 325-335.
- KALADHARAN P., ZACHARIA P.U. & VIJAYAKUMARAN K., 2011 — Coastal and marine floral biodiversity along the Karnataka coast. *Journal of the marine biological association of India* 53: 121-129.
- KRAFT G.T. & OLSEN-STOJKOVICH J., 1985 — *Avrainvillea calithina* (Udoteaceae, Bryopsidales), a new green alga from Lord Howe Island, NSW, Australia. *Phycologia* 24: 339-345.
- KUSEL H., 1972 — Contribution to the knowledge of the seaweeds of Cuba. *Botanica marina* 15: 186-198.
- LAMI R., 1932 — Quelques algues du Grand Lac Amer (Basse-Egypte) récoltées par M. le Professeur Gruvel, en avril 1932. *Revue algologique* 6: 355-356.
- LEE A.C., LIAO L.M. & TAN K.S., 2009 — New records of marine algae on artificial structures and intertidal flats in coastal waters of Singapore. *Raffles bulletin of zoology* 22: 5-40.
- LIPKIN Y., 1972 — Marine algal and sea-grass flora of the Suez Canal: The significance of this flora to the understanding of the recent migration through the Canal. *Israel journal of zoology* 21 (3-4): 405-446.
- LIPKIN Y. & SILVA P.C., 2002 — Marine algae and seagrasses of the Dahlak Archipelago, southern Red Sea. *Nova Hedwigia* 75(1-2): 1-90.
- LITTLER D.S. & LITTLER M.M., 1992 — Systematics of *Avrainvillea* (Bryopsidales, Chlorophyta) in the tropical western Atlantic. *Phycologia* 31: 375-418.

- LITTLER, S. & LITTLER M.M., 2003 — *South Pacific reef plants*. Offshore Graphics, Inc., 331 p.
- LONGENECKER K., BOLICK H. & KAWAMOTO R., 2011 — Macrofaunal invertebrate communities on Hawaii's shallow coral-reef flats: changes associated with the removal of an invasive alien alga. *Bishop museum technical report* 54, 49 p.
- MARTINEZ J.A., WOLANSKI E. & RICHMOND R.H., 2009 — The effects of an alien invasive alga on sediment retention and resuspension in coastal Hawaiian waters and the influence of community based restoration. *The Fifth Education and Science Forum. Washington, DC.*, Session 4A. Coastal Areas, Wetlands and Oceans: 4.
- MENZA C., CALDOW C. & MONACO M.E., 2010 — *A surveillance strategy for invasive species of concern in deepwater habitats of the Northwestern Hawaiian Islands*. NOAA Technical Memorandum NOS NCCOS 108. Silver Spring, MD. 26 p.
- MONTAGNE J.F.C., 1857 — Huitième centurie de plantes cellulaires nouvelles, tant indigènes qu'exotiques. *Décades IV et V. Annales des sciences naturelles, Botanique*, Série 4, 7: 134-153.
- MURRAY G. & BOODLE L.A., 1889 — A systematic and structural account of the genus *Avrainvillea* Decne. *Journal of botany, British and Foreign* 27: 67-72, 97-101, pls 288, 289.
- NASR A.H., 1947 — Synopsis of the marine algae of the Egyptian Red Sea coast. *Bulletin of the faculty of science, Fouad I university* 26: 1-155, pls I-XIV.
- NIZAMUDDIN M., 1991 — *The green marine algae of Libya*. Bern, Elga Publication, 230 p.
- NIZAMUDDIN M., WEST J.A. & MEÑEZ E.G., 1979 — A list of marine algae from Libya. *Botanica marina* 24: 465-476.
- NUNES A.L., KATSANEVAKIS S., ZENETOS A. & CARDOSO A. C., 2014 — Gateways to alien invasions in the European seas. *Aquatic invasions* 9: 133-144.
- N'YEURT A.D.R., 1996 — A preliminary floristic survey of the benthic marine algae of Rotuma Island. *Australian systematic botany* 9: 361-490.
- OLSEN-STOJKOVICH J., 1985 — A systematic study of the genus *Avrainvillea* Decaisne (Chlorophyta, Udoteaceae). *Nova Hedwigia* 41: 1-68
- OUNIFI BEN AMOR K., RIFI M., GHANEM R., DRAEIF I., ZAOUALI J. & BEN SOUISSI J., 2015 — Update of alien fauna and new records from Tunisian marine waters. *Mediterranean marine science* 17: 124-143.
- PAKKER H., BREEMAN A.M., PRUD'HOMME VAN REINE W.F. & VAN DEN HOEK C., 1995 — A comparative study of temperature responses of Caribbean seaweeds from different biogeographic groups. *Journal of phycology* 31: 499-507.
- PAPENFUSS G.F., 1968 — A history, catalogue, and bibliography of the Red Sea benthic algae. *Israel journal of botany* 17: 1-118, 1 map.
- PERGENT G., PERGENT-MARTINI C., DJELLOULI A., BEN HMIDA A., LANGAR H., RAIS C. & OUERGI A., 2014 — Surveillance de l'herbier des îles Kerkennah (Tunisie) – Retour 2014. Action CHANGE, Université de Corse: 12p.
- PEYTON K.A., 2009 — *Aquatic invasive species impacts in Hawaiian soft sediment habitats*. PhD Dissertation, University of Hawaii at Manoa, 138 p.
- RAYSS T., 1959 — Contributions to the knowledge of the marine flora of the Red Sea. No. 15. Contribution à la connaissance de la flore marine de la Mer Rouge. *The sea fisheries research station, Haifa bulletin* 23: 1-32.
- RIBERA M.A. & BOUDOURESQUE C.F., 1995 — Introduced marine plants, with special reference to macroalgae: mechanisms and impact. *Progress in phycological research* 11: 217-268.
- SAIFULLAH S.S., 1996 — Mangrove ecosystem of Saudi Arabian Red Sea coast – An overview. *Journal of King Abdulaziz university: Marine sciences* 7: 263-270.
- SGHAIER Y.R., ZAKHAMA-SRAIEB R., MOUELHI S., VAZQUEZ M., VALLE C., RAMOS-ESPLA A.A., ASTIER J.M., VERLAQUE M. & CHARFI-CHEIKHROUHA F., 2016 — Review of alien marine macrophytes in Tunisia. *Mediterranean marine science* 17: 109-123.
- SHAMEEL M., 1983 — Notes on the seaweeds of Tripoli, Libya. *Pakistan journal of botany* 15: 79-83.
- SMITH J.E., HUNTER C.L. & SMITH C.M., 2002 — Distribution and reproductive characteristics of nonindigenous and invasive marine algae in the Hawaiian Islands. *Pacific science* 56: 299-315.
- SPALDING H.L., 2012 — *Ecology of mesophotic macroalgae and Halimeda kanaloana meadows in the main Hawaiian Islands*. Doctoral dissertation, University of Hawai'i At Mānoa, 199 p.
- SUN H.H., PAUL V.J. & FENICAL W., 1983 — Avrainvilleol, a brominated diphenylmethane derivative with feeding deterrent properties from the tropical green alga *Avrainvillea longicaulis*. *Phytochemistry* 22: 743-745.
- THIERS B., 2017 — Index Herbariorum: A global directory of public herbaria and associated staff. New York Botanical Garden's Virtual Herbarium. <http://sweetgum.nybg.org/ih/> (searched on 10 March 2017).

- TSUDA R.T., 2002 — Checklist of the marine benthic algae from the Palau Archipelago based on past references. *Palau international coral reef center, PICRC Publication* 02-019: 1-21.
- TSUDA R.T., VROOM P.S., ABBOTT I.A., FISHER J.R. & FOSTER K.B., 2008 — Additional Marine Benthic Algae from Howland and Baker Islands, Central Pacific. *Pacific science* 62: 271-290.
- VERHEIJ E. & ERFTEMEIJER P.L.A., 1993 — Distribution of seagrasses and associated macroalgae in South Sulawesi, Indonesia. *Blumea* 38: 45-64.
- VERLAQUE M., RUITTON S., MINEUR F. & BOUDOURESQUE C.F., 2015 — 4. Macrophytes. In: Briand F. (ed.), *CIESM Atlas of exotic species in the Mediterranean*. Monaco, CIESM Publishers, 364 p.
- VIEIRA H.H., BAGATINI I.L., GUINART C.M. & VIEIRA A.A.H., 2016 — TufA gene as molecular marker for freshwater Chlorophyceae. *Algae* 31(2): 155-165.
- XIA B.-M., WANG G.-C. & WANG Y.-Q., 2013 — The benthic algal flora recorded in Sansha region, South China Sea and comparison with those of related areas. *Oceanologia et limnologia sinica* 6: 1681-1704.
- YOUNG J.R., 1977 — Ecological observations on the reproduction of the tropical marine alga *Avrainvillea* from Panama (Siphonales, Codiaceae). *Journal of phycology* 13 (Suppl.): 76.
- ZANARDINI G., 1858 — Plantarum in mari Rubro hucusque collectarum enumerato (juvante A. Figari). *Memoire del reale istituto Veneto di scienze, lettere ed arti* 7: 209-309, pls III-XIV.
- ZAOUALI J., BEN SOUISSI J., STOHR S., D'UDEKEM D'ACCOZ C. & BEN ABDELLAH A., 2007 — Contribution à l'étude des peuplements actuels des substrats solides de l'étage médiolittoral de la Méditerranée méridionale. *Rapports de la Commission internationale pour l'exploration scientifique de la Mer Méditerranée* 38: 639.
- ZENETOS A., GOFAS S., VERLAQUE M., ÇINAR M., GARCIA RASO E., BIANCHI C.-N., MORRI C., AZZURRO E., BILECENOGLU M., FROGLIA C., SIOKOU I., VIOLANTI D., SFRISO A., SAN MARTIN G., GIANGRANDE A., KATAGAN T., BALLESTEROS E., RAMOS ESPLA A., MASTROTOTARO F., OCAÑA O., ZINGONE A., GAMBÌ M.-C. & STREFTARIS N., 2010 — Alien species in the Mediterranean Sea by 2010. A contribution to the application of European Union's Marine Strategy Framework Directive (MSFD). Part I. Spatial distribution. *Mediterranean marine science* 11: 381-493.
- ZENETOS A., GOFAS S., MORRI C., ROSSO A., VIOLANTI D., GARCIA RASO J.E., CINAR M.E., ALMOGI-LABIN A., ATEŞ A.S., AZZURRO E., BALLESTEROS E., BIANCHI C.N., BILECENOGLU M., GAMBÌ M.C., GIANGRANDE A., GRAVILI C., HYAMS-KAPHZAN O., KARACHLE, V. KATSANEVAKIS S., LIPEJ L., MASTROTOTARO F., MINEUR F., PANCUCCI-PAPADOPOULOU M.A., RAMOS ESPLA A., SALAS C., SAN MARTIN G., SFRISO A., STREFTARIS N. & VERLAQUE M., 2012 — Alien species in the Mediterranean Sea by 2012. A contribution to the application of European Union's Marine Strategy Framework Directive (MSFD). Part 2. Patterns in introduction trends and pathways. *Mediterranean marine science* 13: 328-352.
- ZENETOS A., ÇINAR M.E., CROCCETTA F., GOLANI D., ROSSO A., SERVELLO G., SHENKAR N., TURON X. & VERLAQUE M., 2017 — Uncertainties in compiling alien species catalogues: Need for local and expert judgment in validating existing lists: the case of the Mediterranean Sea. *Estuarine, coastal and shelf Science* 191: 171-187.