



HAL
open science

Bringing Geospatial Analysis to the Social Studies: an Assessment of the City Sprawl in China

Polina Lemenkova

► **To cite this version:**

Polina Lemenkova. Bringing Geospatial Analysis to the Social Studies: an Assessment of the City Sprawl in China. 10th International Congress of the Hellenic Geographical Society, Oct 2014, Thessaloniki, Greece. , 2014, 10.6084/m9.figshare.7435172.v1 . hal-01972869

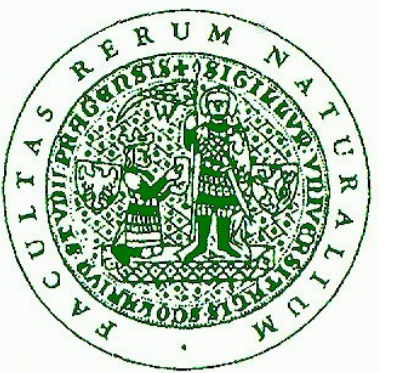
HAL Id: hal-01972869

<https://hal.science/hal-01972869>

Submitted on 8 Jan 2019

HAL is a multi-disciplinary open access archive for the deposit and dissemination of scientific research documents, whether they are published or not. The documents may come from teaching and research institutions in France or abroad, or from public or private research centers.

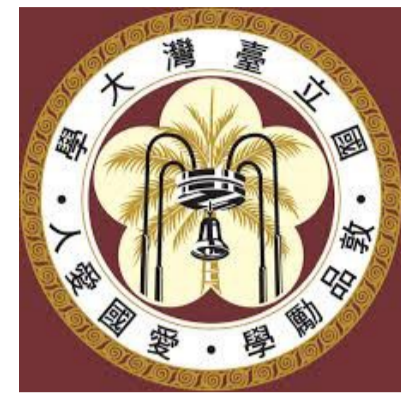
L'archive ouverte pluridisciplinaire **HAL**, est destinée au dépôt et à la diffusion de documents scientifiques de niveau recherche, publiés ou non, émanant des établissements d'enseignement et de recherche français ou étrangers, des laboratoires publics ou privés.



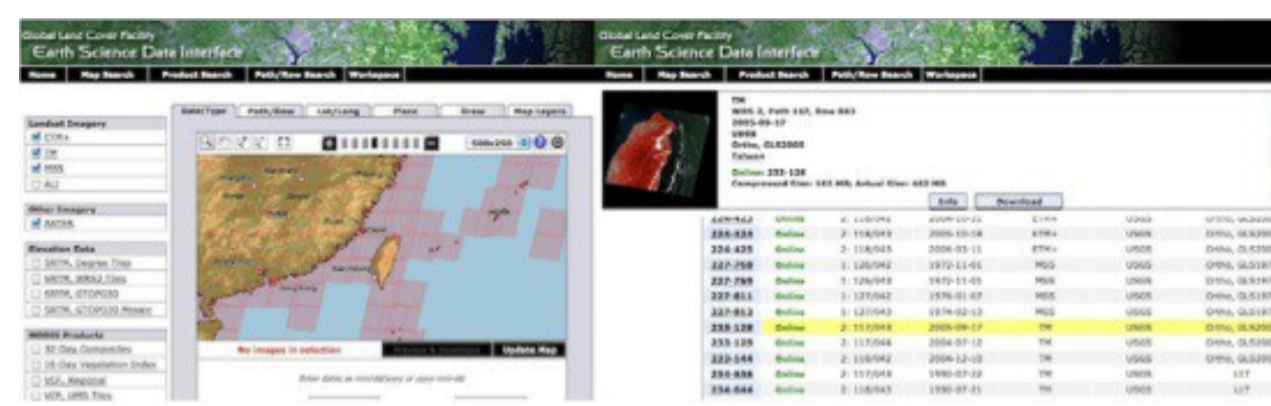
Bringing Geospatial Analysis to the Social Studies: an Assessment of the City Sprawl in China

Lemenkova Polina

Charles University in Prague, Faculty of Science, Institute for Environmental Studies
(Univerzita Karlova v Praze, Přírodovědecká fakulta) Benátská 2, 128 43 Praha 2, Czech Republic
pauline.lemenkova@gmail.com



Research area: Taipei urban landscapes, Taiwan. Located on the north of the Taiwan Island, Taipei is the country's core urban political and economic center with population reaching over 2.6 M and continuing to expand within the city
Research aim: spatio-temporal analysis of urban dynamics in study area during 15 years (1990–2005)
Data capture: The data include Landsat TM images taken from the U.S.G.S. website. The software used is ENVI GIS.



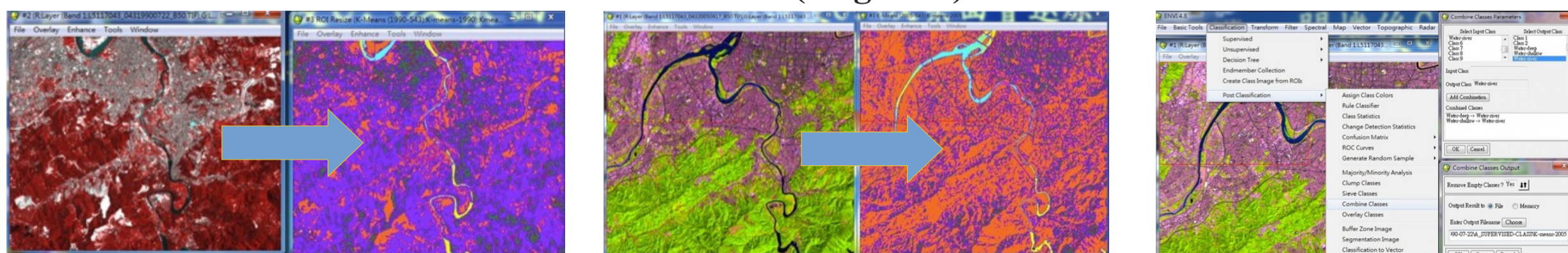
Research objective: application of geoinformatic tools, remote sensing data and application of methodology to spatial analysis for a case study of Taipei

Research problem: In the past decades, the process of urbanization has become more notable in the East Asia. Since past decades, Taipei city undergone serious urban changes. The development of urban landscapes in Taipei has unique feature; Taiwan's exceptional economic and industrial growth since 1980s, which is often referred as "industrial wonder of Taiwan". Recently, the country quickly transformed from an agriculture-based traditional economy into a highly industrialized society. As a result, Taiwan has now a new face of high-technology oriented, economically restructured economy. This caused changes in the face of the country, modifying both its social and natural landscape patterns. Taiwan is nowadays a highly urbanized country with almost 80% of the total population of Taiwan living in urban areas. Intensive urbanization necessarily create new conditions for human-nature co-existence, since rapidly growing city and high urbanization rate affect biodiversity and ecosystems sustainability. The process of urbanization includes transformation of natural landscapes: typical natural land cover type are being transformed into human-affected artificial surfaces and the city area enlarges. Anthropogenic pressure increased rapidly due to the expansion of Taipei metropolitan area. Rapid urbanization affects complex interrelations of natural and urban ecosystems, changes their structure, size and shape, which becomes a serious environmental problem. At the same time, Taiwan has unique natural landscapes with high environmental value, outstanding natural beauty, rare and extinct species. In view of this, environmental monitoring should be considered for effective city management and nature conservation on the island.

Methods:

Workflow includes following steps: 1) Preliminary processing 2) Creation color composites 3) Classification using K-means algorithm 4) Mapping using classification results 5) Accuracy assessment. The preliminary data processing includes image contrast stretching, which is useful as by default, ENVI displays images with a 2% linear contrast stretch. For better contrast the histogram equalization contrast stretch was applied to the image in order to enhance the visual quality.

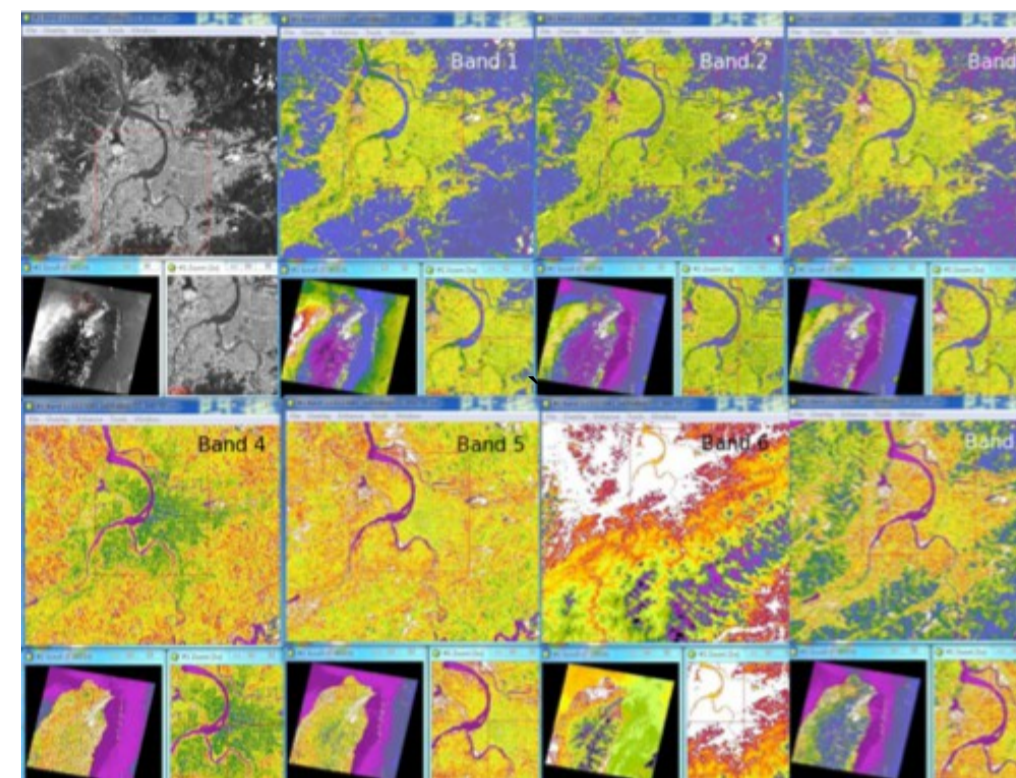
2005 and 1990 Landsat TM scenes classification (fragment). Random color visualization



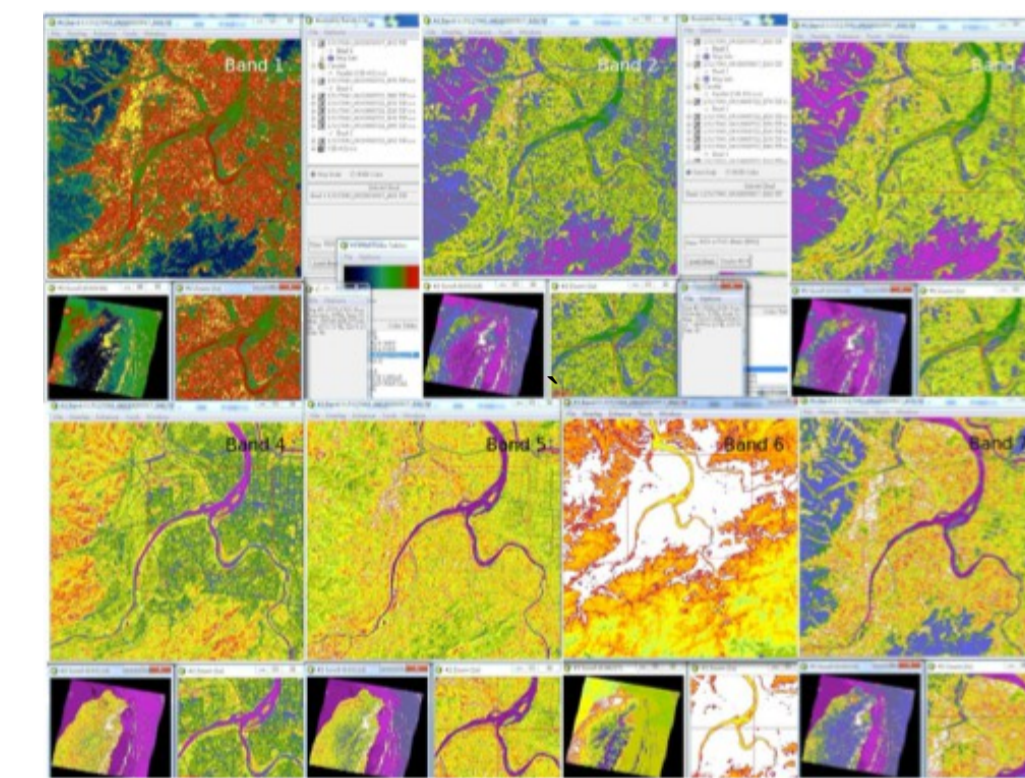
Land Cover Types:

Yeh and Huang (2009) developed classification of the land cover types in the city. Their studies were adopted and adjusted to the current studies suggesting following types: 1) Forests; 2) Urban areas – 2 (roads); 3) Grasslands; 4) Open fields (little or no vegetation); 5) Water areas; 6) Urban vegetation – 1 (bushes); 7) Cultivated lands 8) Agricultural facilities; 9) Urban vegetation – 2 (parks and squares); 10) Urban areas -2 (built-up surfaces).

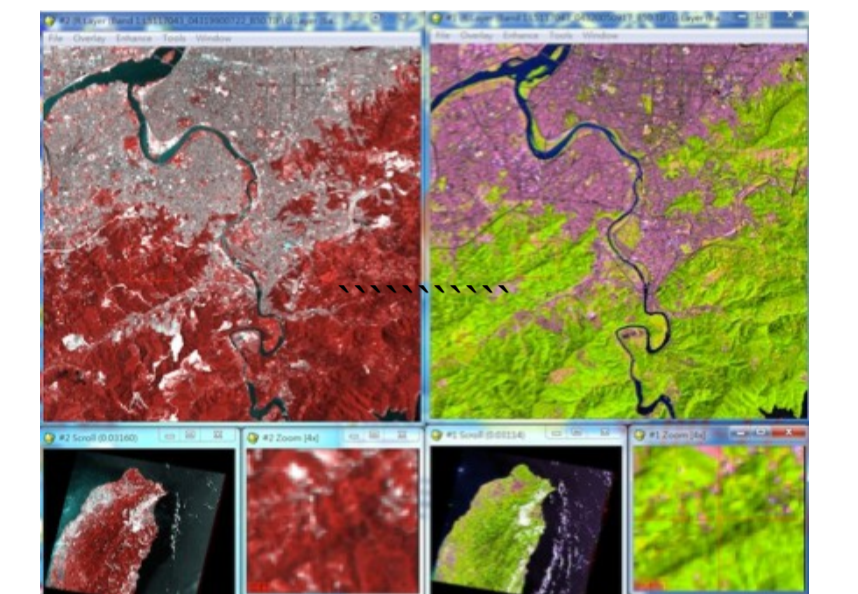
Combining classes



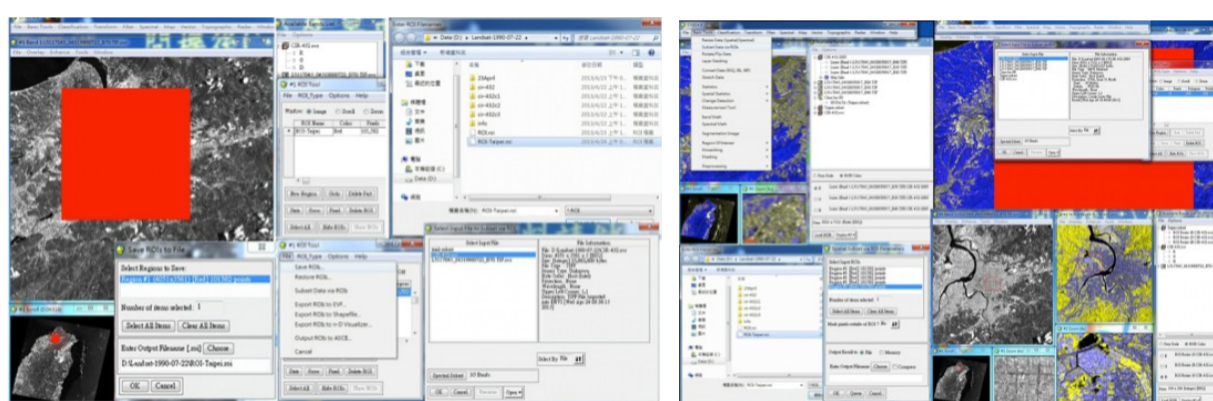
Creating Region Of Interest (ROI)



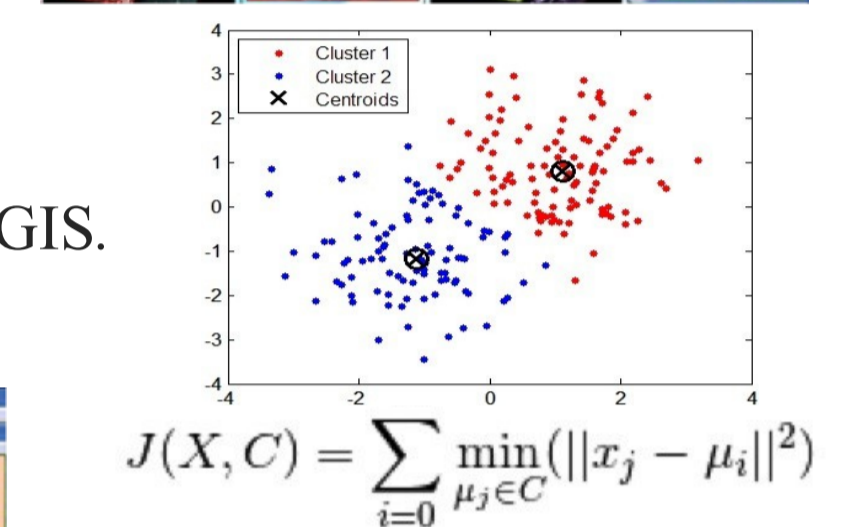
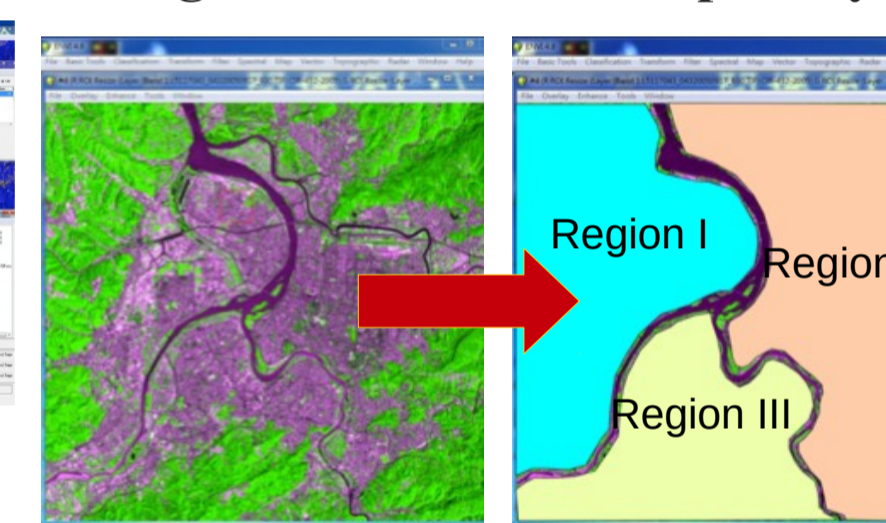
Subset Data via ROI



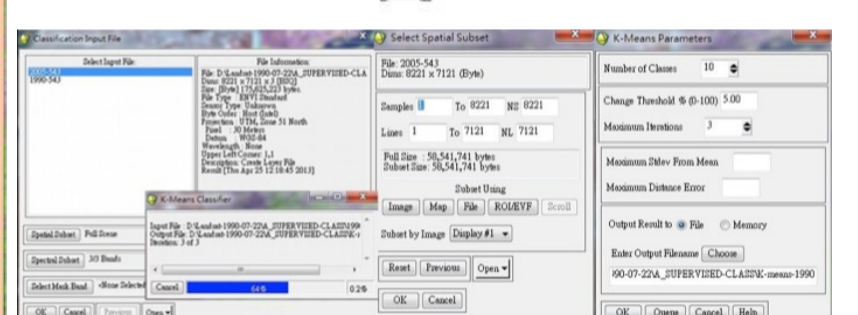
Regional division of Taipei city



Change detection statistics: process



$$J(X, C) = \sum_{i=0} \min_{\mu_j \in C} (||x_j - \mu_i||^2)$$



- 1). Change detection statistics (selection the tool from the menu) 2). Setting options of process 3). Choice of 'Initial Stage' image 4). Choice of 'Final Stage' image 5). Defining equivalent classes 6). Defining pixel size for area statistics 7) Statistics output

To resume a resulting table, following conclusion can be drawn. Comparing regions I, II and III, the conclusion is the following:

Region I has changes in the land cover types since 1990s. It has much more changes comparing to the core, old city area (region II)
Region II (the core city) is the most stable region. It has the least changes, because this area has been already industrialized for a long time.
Region III, has undergone notable changes. This is caused by the intensive relocation of the population to the Taipei area after 1980s. This is regions is dynamically developing within the Taipei since 1990s.

| | 1990, % | 2005, % |
|--------------------------------|---------|---------|
| Region I: "urban areas" | 17,1 | 21,9 |
| Region I: "urban vegetation" | 5,7 | 4,1 |
| Region I: "forests" | 19,8 | 18,6 |
| Region I: "grasslands" | 21,4 | 18,3 |
| Region II: "urban areas" | 79,3 | 83,2 |
| Region II: "urban vegetation" | 4,3 | 5,2 |
| Region II: "forests" | 32,7 | 31,8 |
| Region II: "grasslands" | 15,9 | 14,7 |
| Region III: "urban areas" | 24,3 | 38,2 |
| Region III: "urban vegetation" | 3,7 | 4,3 |
| Region III: "forests" | 42,4 | 41,8 |
| Region III: "grasslands" | 13,8 | 12,1 |

Results: In this research the analysis of changes in landscapes has been done using tools of geospatial analysis. Namely, two satellite images Landsat TM have been processed and classified using ENVI GIS software. As a result of classification, the areas occupied by different landscape types have been calculated and analyzed. Moreover, it has been detected that different parts of the city of Taipei were developing with different rate and intensity. Three (3) different residential types of the city were recognized and mapped. The results demonstrated following outcomes: 1) intensive urban development of the city of Taipei; 2) decline of green areas and natural spaces and, on the contrary, increase in anthropogenic urban spaces; 3) not parallel urban development in different districts of the city of Taipei during the 15-year period of 1990-2005

Acknowledgement: Current work has been supported by the Taiwan Ministry of Education Short Term Research Award (STRA) for research stay of Polina Lemenkova at National Taiwan University (NTU), Department of Geography during April-May 2013.