

## ANALYSIS OF CONTRAST-ENHANCED ULTRASOUND USING FLUID DYNAMIC

B. Denis de Senneville\* A. Novell\* C. Arthuis\*† V. Mendes\*† P. A. Dujardin‡  
F. Patat\*‡ A. Bouakaz\* J. M. Escoffre\* F. Perrotin\*†

\* Mathematical Institute of Bordeaux, UMR 5251 CNRS/University of Bordeaux/INRIA, France

\* Inserm UMR 1253, University of Tours, France

† Department of Obstetrics, Gynecology and Fetal Medicine, University Hospital of Tours, France

‡ Inserm CIC-IT 1415, CHRU de Tours, France

### ABSTRACT

Recent developments in contrast-enhanced ultrasound (CEUS), associated with image processing techniques allow analysing blood perfusion of various organs. A new kinetic analysis is proposed in order to quantify the velocity amplitude of the bolus arrival using a fluid dynamic model. The efficiency of proposed methodology is evaluated *in-vivo*, for the classification of placental insufficiency (control versus ligature) of pregnant rats from DCEUS.

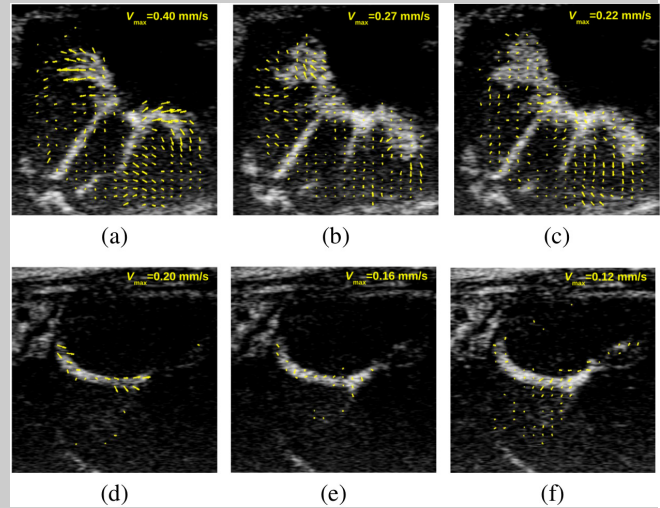
### 1. INTRODUCTION

Contrast-enhanced ultrasound (CEUS) is a non-invasive imaging technique extensively used for blood perfusion imaging of various organs [1]. This modality is based on the acoustic detection of gas-filled microbubble contrast agents used as intravascular flow tracers. Recent efforts aim at quantifying parameters related to the enhancement in the vascular compartment using time-intensity curve (TIC), and at using these latter as indicators for several pathological conditions [2]. However, this quantification is mainly hampered by two reasons: first, the quantification intrinsically solely relies on temporal intensity variation, the explicit spatial transport of the contrast agent being left out. Second, the exact relationship between the acquired US-signal and the local microbubble concentration is hardly accessible. In this study, we introduce the use of a fluid dynamic model for the analysis of dynamic CEUS (DCEUS) [3], in order to circumvent the two above-mentioned limitations. A new kinetic analysis is proposed in order to quantify the velocity amplitude of the bolus arrival.

### 2. RESULTS

Fig. 1 reports typical microbubble transport fields obtained from two dynamic contrast-enhanced experiments (one clip was selected in the control and one in the ligature population, respectively). The estimated microbubble transports are visually larger for the control population (Fig. 1a-c) as compared to the ligature population (Figs. 1d-f). The spatio-temporally averaged microbubble transport amplitude was significantly higher ( $p$ -value= $1.1 \times 10^{-3}$ , AUROC=0.93) in the control group (9 rats) than in the ligature group (11 rats).

This work was supported by grants from Inserm (FP, AB), the University F. Rabelais of Tours (FP, AB), the AERO PERINAT Association (FP), the French Society of Perinatal Medicine (FP, CA) and the Laboratory of Excellence TRAIL ANR-10-LABX-57 (BDDS). This study has also been carried out with the financial support of the French National Research Agency (ANR) in the frame of the "Investments for the future" Programme IdEx Bordeaux-CPU (ANR-10-IDEX-03-02) (BDDS).



**Fig. 1.** Example of microbubble transport estimates from the DCEUS of two rats using the proposed approach. The first and the second rows display results associated to a control and a ligature rats, respectively. The 1<sup>st</sup>, 2<sup>nd</sup> and 3<sup>rd</sup> columns display DCEUS images acquired 10 s, 15 s and 20 s after microbubble arrival, respectively.

### 3. CONCLUSION

This study introduces the use of a fluid dynamic model for the analysis of DCEUS. The proposed classification criterion, estimated from DCEUS echography, was demonstrated to be a good binary classification criterion for ligature/non-ligature rat placentas. Our methodology opens great perspectives for the evaluation of the proposed technique for the clinical diagnostic of obstetrical disorders.

### 4. REFERENCES

- [1] J. A. Jakobsen, "Ultrasound contrast agents: clinical applications," *Eur Radiol*, vol. 11, no. 8, pp. 1329–37, 2001.
- [2] F. Tranquart et al., "Perfusion quantification in contrast-enhanced ultrasound (CEUS)—ready for research projects and routine clinical use," *Ultrasound Med Biol*, vol. 33, pp. S31–8, 2012.
- [3] B. Denis de Senneville et al., "Development of a fluid dynamic model for quantitative contrast-enhanced ultrasound imaging," *IEEE Trans on Med Im*, 10.1109/TMI.2017.2743099.