



**HAL**  
open science

# Limit optimal trajectories in zero-sum stochastic games

Sylvain Sorin, Guillaume Vigeral

► **To cite this version:**

Sylvain Sorin, Guillaume Vigeral. Limit optimal trajectories in zero-sum stochastic games. 2019. hal-01959326v2

**HAL Id: hal-01959326**

**<https://hal.science/hal-01959326v2>**

Preprint submitted on 1 Jun 2019 (v2), last revised 2 Dec 2019 (v3)

**HAL** is a multi-disciplinary open access archive for the deposit and dissemination of scientific research documents, whether they are published or not. The documents may come from teaching and research institutions in France or abroad, or from public or private research centers.

L'archive ouverte pluridisciplinaire **HAL**, est destinée au dépôt et à la diffusion de documents scientifiques de niveau recherche, publiés ou non, émanant des établissements d'enseignement et de recherche français ou étrangers, des laboratoires publics ou privés.

# LIMIT OPTIMAL TRAJECTORIES IN ZERO-SUM STOCHASTIC GAMES

SYLVAIN SORIN AND GUILLAUME VIGERAL

ABSTRACT. We consider zero-sum stochastic games. For every discount factor  $\lambda$ , a time normalization allows to represent the discounted game as being played during the interval  $[0, 1]$ . We introduce the trajectories of cumulated expected payoff and of cumulated occupation measure on the state space up to time  $t \in [0, 1]$ , under  $\varepsilon$ -optimal strategies. A limit optimal trajectory is defined as an accumulation point as  $(\lambda, \varepsilon)$  tend to 0. We study existence, uniqueness and characterization of these limit optimal trajectories for compact absorbing games.

## 1. INTRODUCTION

The analysis of two-person zero-sum repeated games in discrete time may be performed along two lines:

- 1) *asymptotic approach*: to each probability distribution  $\theta$  on the set of stages ( $m = 1, 2, \dots$ ) one associates the game  $G_\theta$  where the evaluation of the stream of stage payoffs  $\{g_m\}$  is  $\sum_{m=1}^{+\infty} \theta_m g_m$ , and one denotes its value by  $v_\theta$ . Given a preordered family  $\{\Theta, \succ\}$  of probability distributions, one studies whether  $v_\theta$  converges as  $\theta \in \Theta$  “goes to  $\infty$ ” according to  $\succ$ . Typical examples correspond to  $n$ -stage games ( $\theta_m = \frac{1}{n} I_{m \leq n}, n \rightarrow \infty$ ),  $\lambda$ -discounted games ( $\theta_m = \lambda(1-\lambda)^{m-1}, \lambda \rightarrow 0$ ), or more generally decreasing evaluations ( $\theta_m \geq \theta_{m+1}$ ) with  $\theta_1 \rightarrow 0$ . The game has an *asymptotic value*  $v^*$  when these limits exist and coincide.
- 2) *uniform approach*: for each strategy of player 1, one evaluates the amount that can be obtained against any strategy of the opponent in every sufficiently long game for  $\{\Theta, \succ\}$ . This allows to define a min max and a max min and the game has a *uniform value*  $v_\infty$  when  $\min \max = \max \min$ .

The second approach is stronger than the first one (existence of  $v_\infty$  implies existence of  $v^*$  and their equality), but there are games with asymptotic value and no uniform value (incomplete information on both sides, Aumann and Maschler [1], Mertens and Zamir [7]; stochastic games with signals on the moves, see e.g. [11]). The first approach deals only with families of values while the second explicitly consider strategies. The main difference is that in the first case  $\varepsilon$ -optimal strategies of the players may depend on the evaluation represented by  $\theta$ .

We focus here on a class of games where this dependence has a smooth representation and allows for a more precise analysis. Basically in addition to the asymptotic properties of the value, one studies the asymptotic behavior along the play induced by  $\varepsilon$ -optimal strategies.

---

*Date*: June 1, 2019.

Some of the results of this paper were presented in “Atelier Franco-Chilien: Dynamiques, optimisation et apprentissage” Valparaiso, November 2010 and a preliminary version of this paper was given at the Game Theory Conference in Stony Brook, July 2012. This research was supported by grant PGMO 0294-01 (France).

In order to do this, we first normalize the duration of the game using the evaluation  $\theta$ . We thus consider each game  $G_\theta$  as being played on  $[0, 1]$ , stage  $n$  lasting from time  $t_{n-1} = \sum_{m < n} \theta_m$  to time  $t_n = t_{n-1} + \theta_n$  (with  $t_0 = 0$ ).

Note that here time  $t$  corresponds to the fraction  $t$  of the total duration of the game, as evaluated through  $\theta$ . In particular given  $\varepsilon$ -optimal strategies in  $G_\theta$  the stream of expected stage payoffs generates a bounded measurable trajectory on  $[0, 1]$  and one will consider its asymptotic behavior.

The next section introduces the basic definitions and concepts that allow to describe our results. The main proofs are in Section 3. Further examples are in Sections 4 and 5.

To end this quick overview let us recall that there are games without asymptotic value: stochastic games with compact action spaces, Vigerál [15]; finite stochastic games with signals on the state, Ziliotto [16]; or in a more general framework, Sorin and Vigerál, [13].

## 2. LIMIT OPTIMAL TRAJECTORIES

Let  $\Gamma$  be a two-person zero-sum stochastic game with state space  $\Omega$ , action spaces  $I$  and  $J$ , stage payoff  $g$  and transition  $\rho$  from  $\Omega \times I \times J$  to  $\mathbb{R}$  (resp.  $\Delta(\Omega)$ ). We assume that  $\Omega$  is finite,  $I$  and  $J$  are compact metric sets,  $g$  and  $\rho$  continuous functions. We keep the same notations for the multilinear extensions to  $X = \Delta(I)$  and  $Y = \Delta(J)$ , where as usual  $\Delta(A)$  denotes the set of probabilities on  $A$ .

For any pair of stationary strategies  $(\mathbf{x}, \mathbf{y}) \in X^\Omega \times Y^\Omega = \mathbf{X} \times \mathbf{Y}$ , any state  $\omega \in \Omega$  and any stage  $n$ , denote by  $c_n^{\omega, \mathbf{x}, \mathbf{y}}$  the expected payoff at stage  $n$  under these stationary strategies, given the initial state  $\omega$ , and by  $q_n^{\omega, \mathbf{x}, \mathbf{y}} \in \Delta(\Omega)$  the corresponding distribution of the state at stage  $n$ . Hence  $c_n^{\omega, \mathbf{x}, \mathbf{y}} = \langle q_n^{\omega, \mathbf{x}, \mathbf{y}}, \bar{g}(\mathbf{x}, \mathbf{y}) \rangle$  where  $\bar{g}(\mathbf{x}, \mathbf{y})$  stands for the vector payoff with component in state  $\zeta \in \Omega$  given by  $g(\zeta; \mathbf{x}(\zeta), \mathbf{y}(\zeta))$ .

### Definition 1.

For any  $(\mathbf{x}, \mathbf{y}) \in X^\Omega \times Y^\Omega$ , any discount factor  $\lambda \in (0, 1]$ , and any starting state  $\omega$ , define the function  $l_\lambda^{\omega, \mathbf{x}, \mathbf{y}} : [0, 1] \rightarrow \mathbb{R}$  by

$$l_\lambda^{\omega, \mathbf{x}, \mathbf{y}}(t_n) = \lambda \sum_{i=1}^n (1 - \lambda)^{i-1} c_i^{\omega, \mathbf{x}, \mathbf{y}}$$

for  $t_n = \lambda \sum_{i=1}^n (1 - \lambda)^{i-1}$  and a linear interpolation between these dates  $\{t_n\}$ .

Thus  $l_\lambda^{\omega, \mathbf{x}, \mathbf{y}}(t_n)$  corresponds to the expectation of the accumulated payoff for the  $n$  first stages, or equivalently up to time  $t_n$ , and  $l_\lambda^{\omega, \mathbf{x}, \mathbf{y}}(t)$  to the same at the fraction  $t$  of the game, both under  $\mathbf{x}$  and  $\mathbf{y}$  in the  $\lambda$ -discounted game starting from  $\omega$ .

Let  $M(\Omega)$  denote the set of positive measures on  $\Omega$ . We introduce similarly the expected accumulated occupation measure at time  $t$  under  $\mathbf{x}$  and  $\mathbf{y}$  in the  $\lambda$ -discounted game starting from  $\omega$  as follows:

### Definition 2.

For any  $(\mathbf{x}, \mathbf{y}) \in X^\Omega \times Y^\Omega$ , any discount factor  $\lambda$ , and any starting state  $\omega$ , define the function  $Q_\lambda^{\omega, \mathbf{x}, \mathbf{y}} :$

$[0, 1] \rightarrow M(\Omega)$  by

$$Q_\lambda^{\omega, \mathbf{x}, \mathbf{y}}(t_n) = \lambda \sum_{i=1}^n (1 - \lambda)^{i-1} q_i^{\omega, \mathbf{x}, \mathbf{y}}$$

and by a linear interpolation between these dates  $\{t_n\}$ .

Note that for any  $t \in [0, 1]$ ,  $Q_\lambda^{\omega, \mathbf{x}, \mathbf{y}}(t) \in t \Delta(\Omega)$ .

Denote by  $l_\lambda^{\mathbf{x}, \mathbf{y}}$  and  $Q_\lambda^{\mathbf{x}, \mathbf{y}}$  the  $\Omega$ -vectors of functions  $l_\lambda^{\omega, \mathbf{x}, \mathbf{y}}(\cdot)$  and  $Q_\lambda^{\omega, \mathbf{x}, \mathbf{y}}(\cdot)$  respectively.

Limit trajectories for the payoff and occupation measures will be defined as accumulation points of  $l_\lambda^{\mathbf{x}_\lambda, \mathbf{y}_\lambda}$  and  $Q_\lambda^{\mathbf{x}_\lambda, \mathbf{y}_\lambda}$  under  $\varepsilon$ -optimal strategies ( $\varepsilon \geq 0$ )  $\mathbf{x}_\lambda$  and  $\mathbf{y}_\lambda$  in the  $\lambda$ -discounted as  $(\varepsilon, \lambda)$  tend to 0. More precisely, denote by  $\mathbf{X}_\lambda^\varepsilon$  (resp.  $\mathbf{Y}_\lambda^\varepsilon$ ) the set of  $\varepsilon$ -optimal stationary strategies in the  $\lambda$ -discounted game  $\Gamma_\lambda$  (with value  $v_\lambda$ ) for Player 1 (resp. for Player 2).

Then we introduce:

**Definition 3.**  $l = (l^\omega : [0, 1] \rightarrow \mathbb{R})_{\omega \in \Omega}$  is a limit optimal trajectory for the expected accumulated payoff (LOTP) if :

$$\forall \varepsilon > 0, \exists \lambda_0 > 0, \forall \lambda < \lambda_0, \exists \mathbf{x}_\lambda \in X_\lambda^\varepsilon, \exists \mathbf{y}_\lambda \in Y_\lambda^\varepsilon, \forall \omega \in \Omega, \forall t \in [0, 1], |l^\omega(t) - l_\lambda^{\omega, \mathbf{x}_\lambda, \mathbf{y}_\lambda}(t)| \leq \varepsilon.$$

$Q = (Q^\omega : [0, 1] \rightarrow M(\Omega))_{\omega \in \Omega}$  is a limit optimal trajectory for the expected accumulated occupation measure (LOTM) if :

$$\forall \varepsilon > 0, \exists \lambda_0 > 0, \forall \lambda < \lambda_0, \exists \mathbf{x}_\lambda \in X_\lambda^\varepsilon, \exists \mathbf{y}_\lambda \in Y_\lambda^\varepsilon, \forall \omega \in \Omega, \forall t \in [0, 1], \|Q^\omega(t) - Q_\lambda^{\omega, \mathbf{x}_\lambda, \mathbf{y}_\lambda}(t)\| \leq \varepsilon.$$

Alternative weaker and stronger definitions are as follows:

**Definition 4.**  $l = (l^\omega : [0, 1] \rightarrow \mathbb{R})_{\omega \in \Omega}$  is a weak limit optimal trajectory for the expected accumulated payoff (WLOTP) if :

$$\forall \varepsilon > 0, \exists \lambda \leq \varepsilon, \exists \mathbf{x}_\lambda \in X_\lambda^\varepsilon, \exists \mathbf{y}_\lambda \in Y_\lambda^\varepsilon, \forall \omega \in \Omega, \forall t \in [0, 1], |l^\omega(t) - l_\lambda^{\omega, \mathbf{x}_\lambda, \mathbf{y}_\lambda}(t)| \leq \varepsilon.$$

$l = (l^\omega : [0, 1] \rightarrow \mathbb{R})_{\omega \in \Omega}$  is a strong limit optimal trajectory for the expected accumulated payoff (SLOTP) if :

$$\forall \varepsilon > 0, \exists \lambda_0 > 0, \exists \varepsilon_0 > 0, \forall \lambda < \lambda_0, \forall \mathbf{x}_\lambda \in X_\lambda^{\varepsilon_0}, \forall \mathbf{y}_\lambda \in Y_\lambda^{\varepsilon_0}, \forall \omega \in \Omega, \forall t \in [0, 1], |l^\omega(t) - l_\lambda^{\omega, \mathbf{x}_\lambda, \mathbf{y}_\lambda}(t)| \leq \varepsilon.$$

and similar definitions for weak (resp. strong) limit optimal trajectory for the expected accumulated occupation measure, (WLOTM) (resp. (SLOTM)).

**Remark 5.**

- WLOTP (WLOTP) always exists by standard arguments of equicontinuity.
- if a LOTP  $l$  exists,  $v_\lambda$  converges to  $l(1)$ .

- if a *SLOTP* exists, it is unique
- no *SLOTM* exists in general (just consider a game where payoff is always 0).

**Remark 6.**

If the game has a uniform value  $v$  and both players use  $\varepsilon$ -optimal strategies the average expected payoff is essentially constant along the play.

Hence  $\ell(t) = tv$  is a *LOTP*.

A first approach to this topic concerns one player games (or games where one player controls the transitions), where there is no finiteness assumption on  $\Omega$ . If  $v_\lambda$  converges uniformly then there exists a *SLOTP* and it is linear w.r.t.  $t$ , which means that the expected payoff is constant along the trajectory (Sorin, Venel and Vigerál [14]).

The same article provides an example of a two player game with finite action and countable state spaces, where *LOTP* is not unique.

The main contributions of the current paper are:

- a) For absorbing games, existence of a linear *LOTP*, and existence of a “geometric” algebraic *LOTM*.
- b) For finite absorbing games, existence of a *SLOTP*.
- c) An example of a finite game where *LOTM* is not semialgebraic.
- d) An example of compact absorbing game with non uniqueness of *LOTP*.

Let us mention recent results of Oliu-Barton and Ziliotto [8] establishing the existence of linear *SLOPT* for finite stochastic games and optimal strategies: the class of games is larger and they allow for any kind of optimal strategies (hence not only stationary). Our results deal with compact action spaces and  $\varepsilon$ -optimal stationary strategies.

As a final comment, let us underline the fact that the previous concepts and definitions can be extended to any repeated game, for any evaluation and any type of strategies.

### 3. ABSORBING GAMES

An absorbing game  $\Gamma$  is defined by two sets of actions  $I$  and  $J$ , two stage payoff functions  $g, g^*$  from  $I \times J$  to  $[-1, 1]$  and a probability of absorption  $p^*$  from  $I \times J$  to  $[0, 1]$ .

$I$  and  $J$  are compact metric sets,  $g, g^*$  and  $p^*$  are (jointly) continuous functions.

The repeated game is played in discrete time as follows. At stage  $t = 1, 2, \dots$  (if absorption has not yet occurred) player 1 chooses  $i_t \in I$  and, simultaneously, player 2 chooses  $j_t \in J$ :

- (i) the payoff at stage  $t$  is  $g(i_t, j_t)$ ;

- (ii) with probability  $p^*(i_t, j_t)$  absorption is reached and the payoff in all future stages  $s > t$  is  $g^*(i_t, j_t)$ ;
- (iii) with probability  $p(i_t, j_t) := 1 - p^*(i_t, j_t)$  the game is repeated at stage  $t + 1$ .

Recall that the asymptotic analysis for these games is due to Kohlberg [3] in the case where  $I$  and  $J$  are finite and Rosenberg and Sorin [9] in the current framework. In either case the value  $v_\lambda$  of the discounted game  $\Gamma_\lambda$  converges to some  $v$  as  $\lambda$  goes to 0. This does not require any assumption on the information of the players. In case of full observation of the actions - or even only of the stage payoff -, a uniform value exists, see Mertens and Neyman [5] in the finite case and Mertens, Neyman and Rosenberg [6] for compact actions.

Recall that  $X = \Delta(I)$  and  $Y = \Delta(J)$  are the sets of probabilities on  $I$  and  $J$ . The functions  $g$ ,  $p$  and  $p^*$  are bilinearly extended to  $X \times Y$ . Let

$$G^*(x, y) := p^*(x, y)\bar{g}^*(x, y) := \int_{I \times J} p^*(i, j)g^*(i, j)x(di)y(dj).$$

$\bar{g}^*(x, y)$  is thus the expected absorbing payoff conditionally to absorption (and is thus only defined for  $p^*(x, y) \neq 0$ ).

### 3.1. An auxiliary game.

Consider the two-person zero-sum (one-shot) game  $\mathbf{A}$ , with actions  $(x, x', a) \in S = X^2 \times \mathbb{R}^+$  and  $(y, y', b) \in T = Y^2 \times \mathbb{R}^+$ , defined by the payoff function

$$A(x, x', a, y, y', b) = \frac{g(x, y) + a G^*(x', y) + b G^*(x, y')}{1 + a p^*(x', y) + b p^*(x, y')}. \quad (1)$$

#### 3.1.1. General properties.

The following proposition extends to the compact case results due to Laraki [4] (Theorem 3 and Corollary 4) in the finite case (which were later on simplified by Cardaliaguet, Laraki and Sorin [2]).

#### Proposition 7.

1) The game  $\mathbf{A}$  has a value, which is  $v = \lim v_\lambda$ .

More precisely

$$v = \max_{x \in X} \sup_{(x', a) \in X \times \mathbb{R}^+} \inf_{(y, y', b) \in T} A(x, x', a, y, y', b) = \min_{y \in Y} \inf_{(y', b) \in Y \times \mathbb{R}^+} \sup_{(x, x', a) \in S} A(x, x', a, y, y', b).$$

2) Moreover, if  $(x, x', a)$  is  $\varepsilon$ -optimal in the game  $\mathbf{A}$  then for any  $\lambda$  small enough the stationary strategy

$\hat{x}_\lambda := \frac{x + \lambda a x'}{1 + \lambda a}$  is  $2\varepsilon$ -optimal in  $\Gamma_\lambda$ .

*Proof.*

1) Consider an accumulation point  $w$  of the family  $\{v_\lambda\}$  and let  $\lambda_n \rightarrow 0$  such that  $v_{\lambda_n}$  converges to  $w$ .

We will show that

$$w \leq \sup_{(x,x',a) \in S} \inf_{(y,y',b) \in T} \frac{g(x,y) + a G^*(x',y) + b G^*(x,y')}{1 + a p^*(x',y) + b p^*(x,y')} \quad (2)$$

A dual argument proves at the same time that the family  $\{v_\lambda\}$  converges and that the auxiliary game  $\mathbf{A}$  has a value.

Let  $r_\lambda(x,y)$  be the payoff in the game  $\Gamma_\lambda$ , induced by a pair of stationary strategies  $(x,y) \in X \times Y$ . It satisfies

$$r_\lambda(x,y) = \lambda g(x,y) + (1-\lambda)[(1-p^*(x,y))r_\lambda(x,y) + G^*(x,y)] \quad (3)$$

hence

$$r_\lambda(x,y) = \frac{\lambda g(x,y) + (1-\lambda)G^*(x,y)}{\lambda + (1-\lambda)p^*(x,y)}. \quad (4)$$

In particular for any  $x_\lambda \in X$  optimal for Player 1 in  $\Gamma_\lambda$ , one obtains

$$v_\lambda \leq \frac{\lambda g(x_\lambda,y) + (1-\lambda)G^*(x_\lambda,y)}{\lambda + (1-\lambda)p^*(x_\lambda,y)}, \quad \forall y \in Y, \quad (5)$$

that one can write

$$v_\lambda \leq \frac{g(x_\lambda,y) + \frac{(1-\lambda)}{\lambda}G^*(x_\lambda,y)}{1 + \frac{(1-\lambda)}{\lambda}p^*(x_\lambda,y)}, \quad \forall y \in Y. \quad (6)$$

Let  $\bar{x} \in X$  be an accumulation point of  $\{x_{\lambda_n}\}$  and given  $\varepsilon > 0$  let  $\bar{\lambda}$  in the sequence  $\{\lambda_n\}$  such that

$$|g(\bar{x},y) - g(x_{\bar{\lambda}},y)| \leq \varepsilon, \quad \forall y \in Y$$

(we use the fact that  $g$  is uniformly continuous on  $X \times Y$ ) and

$$|v_{\bar{\lambda}} - w| \leq \varepsilon.$$

Then with  $\bar{a} = \frac{(1-\bar{\lambda})}{\bar{\lambda}}$  and  $\bar{x}' = x_{\bar{\lambda}}$ , (6) implies

$$w - \varepsilon \leq \frac{g(\bar{x},y) + \bar{a}G^*(\bar{x}',y)}{1 + \bar{a}p^*(\bar{x}',y)} + \varepsilon, \quad \forall y \in Y. \quad (7)$$

On the other hand, going to the limit in (5) leads to

$$w p^*(\bar{x},y') \leq G^*(\bar{x},y'), \quad \forall y' \in Y. \quad (8)$$

We multiply (7) by the denominator  $1 + \bar{a}p^*(\bar{x}',y)$  and we add to (8) multiplied by  $b \in \mathbf{R}_+$  to obtain the property:

$\forall \varepsilon > 0, \exists \bar{x}, \bar{x}' \in X$  and  $\bar{a} \in \mathbf{R}_+$  such that

$$w \leq \frac{g(\bar{x},y) + \bar{a}G^*(\bar{x}',y) + bG^*(\bar{x},y')}{1 + \bar{a}p^*(\bar{x}',y) + bp^*(\bar{x},y')} + 2\varepsilon, \quad \forall y, y' \in Y, b \in \mathbf{R}_+ \quad (9)$$

which implies (2). Note moreover that

(\*)  $\bar{x}$  is independent of  $\varepsilon$ ,

which allows to replace sup by max hence the result.

2) Let  $(x, x', a)$  be  $\varepsilon$ -optimal in the game  $\mathbf{A}$  and  $\hat{x}_\lambda := \frac{x + \lambda a x'}{1 + \lambda a}$ . Using (4) one obtains

$$r_\lambda(\hat{x}_\lambda, y) = \frac{\lambda[g(x, y) + \lambda a g(x', y)] + (1 - \lambda)[G^*(x, y) + \lambda a G^*(x', y)]}{\lambda(1 + \lambda a) + (1 - \lambda)(p^*(x, y) + \lambda a p^*(x', y))}.$$

Note that

$$A(x, x', a, y, y, \frac{1 - \lambda}{\lambda}) = \frac{\lambda g(x, y) + \lambda a G^*(x', y) + (1 - \lambda) G^*(x, y)}{\lambda + \lambda a p^*(x', y) + (1 - \lambda) p^*(x, y)}.$$

Thus

$$|r_\lambda(\hat{x}_\lambda, y) - A(x, x', a, y, y, \frac{1 - \lambda}{\lambda})| \leq 4C\lambda a$$

where  $C$  is a bound on the payoffs. Hence, for any  $y \in Y$

$$v - r_\lambda(\hat{x}_\lambda, y) \leq \varepsilon + 4C\lambda a \leq 2\varepsilon$$

for  $\lambda$  small enough. □

$\mathbf{A}$  is an *auxiliary limit game* in the sense that:

- i) There is a map  $\phi_1$  from  $S \times (0, 1]$  to  $X$  (that associates to a strategy of player 1 in  $\mathbf{A}$  and a discount factor a stationary strategy of player 1 in  $\Gamma$ ).
- ii) There is a map  $\psi_1$  from  $Y \times (0, 1]$  to  $T$  (that associates to a stationary strategy of player 2 in  $\Gamma$  and a discount factor a stationary strategy of player 2 in  $\mathbf{A}$ ).
- iii)

$$r_\lambda(\phi_1(\lambda, s), y) \geq A(s, \psi_1(\lambda, y)) - o(1), \quad \forall s \in S, \forall y \in Y$$

- iv) A dual property holds with some  $\phi_2$  and  $\psi_2$ .

These properties imply:  $\lim v_\lambda$  exists and equals  $v(\mathbf{A})$ .

We then recover Corollary 3.2 in Sorin and Vigeral [12], with a new proof that will be useful in the sequel.

**Corollary 8.**

$$\begin{aligned} v &= \min_{y \in Y} \max_{x \in X} \text{med} \left( g(x, y); \sup_{x'' | p^*(x'', y) > 0} \{\bar{g}^*(x'', y)\}; \inf_{y'' | p^*(x, y'') > 0} \{\bar{g}^*(x, y'')\} \right) \\ &= \max_{x \in X} \min_{y \in Y} \text{med} \left( g(x, y); \sup_{x'' | p^*(x'', y) > 0} \{\bar{g}^*(x'', y)\}; \inf_{y'' | p^*(x, y'') > 0} \{\bar{g}^*(x, y'')\} \right) \end{aligned} \quad (10)$$



where  $\text{med}$  is the median of three numbers, and with the usual convention that  $\sup_{x'' \in \emptyset} = -\infty$ ;  $\inf_{y'' \in \emptyset} = +\infty$ . Moreover if  $(x, x', a)$  (resp  $(y, y', \varepsilon)$ ) is  $\varepsilon$ -optimal in  $\mathbf{A}$  then  $x$  (resp.  $y$ ) is  $\varepsilon$ -optimal in (10).

*Proof.*

For any  $\varepsilon > 0$  fix a triplet  $(y, y'_\varepsilon, b_\varepsilon) \in T$  of the second player  $\varepsilon$ -optimal in  $\mathbf{A}$ , where we can assume that  $y$  does not depend on  $\varepsilon$  by the previous proof (\*). Then for any  $x'' \in X$  such that  $p^*(x'', y) > 0$ , one has

$$v + \varepsilon \geq \lim_{a \rightarrow +\infty} A(x, x'', a, y, y'_\varepsilon, b_\varepsilon) = \bar{g}^*(x'', y) \quad (11)$$

thus  $v + \varepsilon \geq h^+(y) := \sup_{x'' | p^*(x'', y) > 0} \{\bar{g}^*(x'', y)\}$ . Denote similarly  $h^-(x) = \inf_{y'' | p^*(x, y'') > 0} \{\bar{g}^*(x, y'')\}$ .

On the other hand, for any  $x$

$$v + \varepsilon \geq A(x, x'', 0, y, y'_\varepsilon, b_\varepsilon) = \frac{g(x, y) + b_\varepsilon G^*(x, y'_\varepsilon)}{1 + b_\varepsilon p^*(x, y'_\varepsilon)}$$

Now if  $p^*(x, y'_\varepsilon) > 0$ ,  $\frac{g(x, y) + b_\varepsilon G^*(x, y'_\varepsilon)}{1 + b_\varepsilon p^*(x, y'_\varepsilon)} \geq \min\{g(x, y), \bar{g}^*(x, y'_\varepsilon)\}$ , hence in all cases

$$v + \varepsilon \geq A(x, x'', 0, y, y'_\varepsilon, b_\varepsilon) \geq \min\{g(x, y), h^-(x)\}.$$

Thus for any  $x \in X$

$$v + \varepsilon \geq \text{med}(g(x, y); h^+(y); h^-(x)) \quad (12)$$

Letting  $\varepsilon$  go to 0 and using the dual inequality establish the results.  $\square$

### 3.1.2. Further properties of optimal strategies.

We establish here more precise results concerning the decomposition of the payoff induced by  $\varepsilon$ -optimal strategies in the game  $\mathbf{A}$ .

**Proposition 9.** *Let  $(x, x', a)$  and  $(y, y', b)$  be  $\varepsilon$ -optimal in the game  $\mathbf{A}$ .*

- a) *If  $p^*(x, y) > 0$  then  $|\bar{g}^*(x, y) - v| \leq \varepsilon$*
- b)  *$|g(x, y) - v| \leq 2(1 + ap^*(x', y) + bp^*(x, y'))\varepsilon$*
- c) *If  $ap^*(x', y) + bp^*(x, y') > 0$  then  $\left| \frac{aG^*(x', y) + bG^*(x, y')}{ap^*(x', y) + bp^*(x, y')} - v \right| \leq 3 \frac{1 + ap^*(x', y) + bp^*(x, y')}{ap^*(x', y) + bp^*(x, y')} \varepsilon$ .*

*Proof.* a) This is exactly equation (11) and its dual.

b) From  $v + \varepsilon \geq A(x, x', 0, y, y', b)$  we get

$$\frac{g(x, y) + bG^*(x, y')}{1 + bp^*(x, y')} \leq v + \varepsilon.$$

On the other hand,  $v - \varepsilon \leq \lim_{b \rightarrow \infty} A(x, x', a, y, y', b)$  hence  $G^*(x, y') \geq (v - \varepsilon)p^*(x, y')$ . Combining both inequalities yields

$$\begin{aligned} g(x, y) &\leq (v + \varepsilon)(1 + bp^*(x, y')) - b(v - \varepsilon)p^*(x, y') \\ &\leq v + \varepsilon(1 + 2bp^*(x, y')) \\ &\leq v + 2\varepsilon(1 + ap^*(x', y) + bp^*(x, y')) \end{aligned} \tag{13}$$

and the dual inequality is similar.

c) Since  $A(x, x', a, y, y', b) \geq v - \varepsilon$ , one has

$$\begin{aligned} (v - \varepsilon)(1 + ap^*(x', y) + bp^*(x, y')) &\leq g(x, y) + aG^*(x', y) + bG^*(x, y') \\ &\leq v + 2\varepsilon(1 + ap^*(x', y) + bp^*(x, y')) + aG^*(x', y) + bG^*(x, y') \text{ by (13)} \end{aligned}$$

hence

$$v(ap^*(x', y) + bp^*(x, y')) - aG^*(x', y) - bG^*(x, y') \leq 3\varepsilon(1 + ap^*(x', y) + bp^*(x, y'))$$

and the dual inequality is similar.  $\square$

### 3.2. Asymptotics properties in $\Gamma_\lambda$ .

Since the game is absorbing, we write simply  $Q_\lambda^{x,y}(t)$  for  $Q_\lambda^{\omega_0, x, y}(t)(\omega_0)$ , where  $\omega_0$  is the nonabsorbing state.

**Lemma 10.** *Let  $x_\lambda$  and  $y_\lambda$  be two families of (non necessarily optimal) stationary strategies of Player 1 and Player 2 respectively. Assume that  $\frac{p^*(x_\lambda, y_\lambda)}{\lambda}$  converges to some  $\gamma$  in  $[0, +\infty]$  as  $\lambda$  goes to 0. Then  $Q_\lambda^{x_\lambda, y_\lambda}(t)$  converges, uniformly in  $t$ , to  $\frac{1 - (1-t)^{1+\gamma}}{1+\gamma}$ , as  $\lambda$  goes to 0, with the natural convention that  $\frac{1 - (1-t)^{1+\gamma}}{1+\gamma} = 0$  for  $\gamma = +\infty$ .*

*Proof.* By definition 2, for any  $\lambda$  and  $t_n = \lambda \sum_{i=1}^n (1-\lambda)^{i-1} = 1 - (1-\lambda)^n$ ,

$$\begin{aligned} Q_\lambda^{x_\lambda, y_\lambda}(t_n) &= \lambda \sum_{i=1}^n (1-\lambda)^{i-1} (1 - p^*(x_\lambda, y_\lambda))^{i-1} \\ &= \frac{1 - ((1-\lambda)(1 - p^*(x_\lambda, y_\lambda)))^n}{1 + \frac{p^*(x_\lambda, y_\lambda)}{\lambda} - p^*(x_\lambda, y_\lambda)} \end{aligned}$$

with linear interpolation between these dates.

Remark first that this implies that  $Q_\lambda^{x_\lambda, y_\lambda}(t) \leq [1 + \frac{p^*(x_\lambda, y_\lambda)}{\lambda}]^{-1}$  for all  $t$  and  $\lambda$ , which gives at the limit the desired result if  $\gamma = +\infty$ .

Assume now that  $\gamma \in [0, +\infty[$ , and thus that  $p^*(x_\lambda, y_\lambda)$  tends to 0 as  $\lambda$  goes to 0. Fix  $t$  and  $\lambda$ , and let  $n$  be the integer part of  $\frac{\ln(1-t)}{\ln(1-\lambda)}$  so that  $t_n \leq t \leq t_{n+1}$ . Since  $Q_\lambda^{x_\lambda, y_\lambda}(t_n)$  is decreasing in  $n$ ,

$$\begin{aligned}
Q_\lambda^{x_\lambda, y_\lambda}(t) &\leq Q_\lambda^{x_\lambda, y_\lambda}(t_n) \\
&= \frac{1 - ((1 - \lambda)(1 - p^*(x_\lambda, y_\lambda)))^n}{1 + \frac{p^*(x_\lambda, y_\lambda)}{\lambda} - p^*(x_\lambda, y_\lambda)} \\
&\leq \frac{1 - ((1 - \lambda)(1 - p^*(x_\lambda, y_\lambda)))^{\frac{\ln(1-t)}{\ln(1-\lambda)} - 1}}{1 + \frac{p^*(x_\lambda, y_\lambda)}{\lambda} - p^*(x_\lambda, y_\lambda)} \\
&= \frac{1 - (1-t)^{1 + \frac{\ln(1-p^*(x_\lambda, y_\lambda))}{\ln(1-\lambda)} - \ln(1-\lambda)}}{1 + \frac{p^*(x_\lambda, y_\lambda)}{\lambda} - p^*(x_\lambda, y_\lambda)} \tag{14}
\end{aligned}$$

Similarly,

$$\begin{aligned}
Q_\lambda^{x_\lambda, y_\lambda}(t) &\geq Q_\lambda^{x_\lambda, y_\lambda}(t_{n+1}) \\
&= \frac{1 - ((1 - \lambda)(1 - p^*(x_\lambda, y_\lambda)))^{n+1}}{1 + \frac{p^*(x_\lambda, y_\lambda)}{\lambda} - p^*(x_\lambda, y_\lambda)} \\
&\geq \frac{1 - ((1 - \lambda)(1 - p^*(x_\lambda, y_\lambda)))^{\frac{\ln(1-t)}{\ln(1-\lambda)} + 1}}{1 + \frac{p^*(x_\lambda, y_\lambda)}{\lambda} - p^*(x_\lambda, y_\lambda)} \\
&= \frac{1 - (1-t)^{1 + \frac{\ln(1-p^*(x_\lambda, y_\lambda))}{\ln(1-\lambda)} + \ln(1-\lambda)}}{1 + \frac{p^*(x_\lambda, y_\lambda)}{\lambda} - p^*(x_\lambda, y_\lambda)} \tag{15}
\end{aligned}$$

Letting  $\lambda$  go to 0 in (14) and (15) yields the result.  $\square$

For any  $(x, x', a) \in X^2 \times \mathbb{R}^+$  and  $(y, y', b) \in Y^2 \times \mathbb{R}^+$  define

$$\gamma(x, x', a, y, y', b) = \begin{cases} +\infty & \text{if } p^*(x, y) > 0 \\ ap^*(x', y) + bp^*(x, y') & \text{if } p^*(x, y) = 0 \end{cases}$$

An immediate consequence of the previous lemma is

**Corollary 11.** *Let  $(x, x', a) \in X^2 \times \mathbb{R}^+$  and  $(y, y', b) \in Y^2 \times \mathbb{R}^+$  and denote  $\hat{x}_\lambda := \frac{x + \lambda a x'}{1 + \lambda a}$  and  $\hat{y}_\lambda := \frac{y + \lambda b y'}{1 + \lambda b}$ .*

*Then  $Q_\lambda^{\hat{x}_\lambda, \hat{y}_\lambda}(t)$  converges uniformly in  $t$  to  $\frac{1 - (1-t)^{1+\gamma(x, x', a, y, y', b)}}{1 + \gamma(x, x', a, y, y', b)}$  as  $\lambda$  goes to 0.*

**Proposition 12.** *Any absorbing game has a LOTM  $Q(t) = \frac{1 - (1-t)^{1+\gamma}}{1 + \gamma}$  for some  $\gamma \in [0, +\infty]$ , and a LOTP  $l(t) = tv$ .*

*Proof.* For every  $n$  let  $(x, x'_n, a_n)$  and  $(y, y'_n, b_n)$  be  $\frac{1}{n}$ -optimal strategies for each player in  $\mathbf{A}$  (recall that  $x$  and  $y$  can be chosen independently of  $n$ ). Up to extraction  $\gamma_n := \gamma(x, x'_n, a_n, y, y'_n, b_n)$  converges to some  $\gamma$  in  $[0, +\infty]$ .

Fix  $\varepsilon > 0$  and let  $n \geq \frac{2}{\varepsilon}$  such that

$$\left| \frac{1 - (1-t)^{1+\gamma_n}}{1 + \gamma_n} - \frac{1 - (1-t)^{1+\gamma}}{1 + \gamma} \right| \leq \frac{\varepsilon}{2} \tag{16}$$

on  $[0,1]$ . By Proposition 7 the strategies  $\hat{x}_\lambda^n := \frac{x+\lambda a_n x'_n}{1+\lambda a_n}$  and  $\hat{y}_\lambda^n := \frac{y+\lambda b_n y'_n}{1+\lambda b_n}$  are  $\varepsilon$ -optimal in  $\Gamma_\lambda$  for  $\lambda$  small enough. Corollary 11 and equation (16) imply that

$$\left| Q_\lambda^{\hat{x}_\lambda^n, \hat{y}_\lambda^n}(t) - \frac{1 - (1-t)^{1+\gamma}}{1+\gamma} \right| \leq \varepsilon \quad (17)$$

for all  $\lambda$  small enough and  $t \in [0, 1]$ . This answers the first part of the Proposition.

Clearly

$$l_\lambda^{\hat{x}_\lambda^n, \hat{y}_\lambda^n}(t) = Q_\lambda^{\hat{x}_\lambda^n, \hat{y}_\lambda^n}(t)g(\hat{x}_\lambda^n, \hat{y}_\lambda^n) + \left(t - Q_\lambda^{\hat{x}_\lambda^n, \hat{y}_\lambda^n}(t)\right)\bar{g}^*(\hat{x}_\lambda^n, \hat{y}_\lambda^n). \quad (18)$$

Recall that the payoff function is assumed bounded by 1. Then equations (17) and (18) imply that for  $\lambda$  small enough and every  $t$ ,

$$\left| l_\lambda^{\hat{x}_\lambda^n, \hat{y}_\lambda^n}(t) - \frac{1 - (1-t)^{1+\gamma}}{1+\gamma}g(\hat{x}_\lambda^n, \hat{y}_\lambda^n) - \left(t - \frac{1 - (1-t)^{1+\gamma}}{1+\gamma}\right)\bar{g}^*(\hat{x}_\lambda^n, \hat{y}_\lambda^n) \right| \leq 2\varepsilon$$

Since  $x_\lambda^n$  and  $y_\lambda^n$  converge to  $x$  and  $y$ , we then have for  $\lambda$  small enough

$$\left| l_\lambda^{\hat{x}_\lambda^n, \hat{y}_\lambda^n}(t) - \frac{1 - (1-t)^{1+\gamma}}{1+\gamma}g(x, y) - \left(t - \frac{1 - (1-t)^{1+\gamma}}{1+\gamma}\right)\bar{g}^*(\hat{x}_\lambda^n, \hat{y}_\lambda^n) \right| \leq 3\varepsilon \quad (19)$$

We now consider four separate cases. Basically either  $\gamma = 0$  or  $+\infty$  and equation (19) implies that  $l(t)$  is linear, and hence equals  $tv$  since  $l(1) = v$  by near optimality of the strategies  $\hat{x}_\lambda^n$  and  $\hat{y}_\lambda^n$  in  $\Gamma_\lambda$ ; or  $\gamma \in ]0, +\infty[$  and then both  $g(x, y)$  and  $\bar{g}^*(\hat{x}_\lambda^n, \hat{y}_\lambda^n)$  are close to  $v$  by Proposition 9, which once again implies  $l(t) = tv$ .

Case 1 :  $p^*(x, y) > 0$ . Then  $\bar{g}^*(\hat{x}_\lambda^n, \hat{y}_\lambda^n)$  converges to  $\bar{g}^*(x, y)$  as  $\lambda$  go to 0, and by Proposition 9 a)  $|\bar{g}^*(x, y) - v| \leq \varepsilon$ . Since  $\gamma = +\infty$  in that case, equation (19) yields  $|l_\lambda^{\hat{x}_\lambda^n, \hat{y}_\lambda^n}(t) - tv| \leq 5\varepsilon$  for all  $\lambda$  small enough, uniformly in  $t$ .

Case 2 :  $p^*(x, y) = 0$  and  $\gamma = 0$ , hence  $\gamma_n \leq 1$  (up to choosing a larger  $n$ ). Then Proposition 9 b) implies  $|g(x, y) - v| \leq 4\varepsilon$ , and equation (19) yields  $|l_\lambda^{\hat{x}_\lambda^n, \hat{y}_\lambda^n}(t) - tv| \leq 7\varepsilon$  for all  $\lambda$  small enough, uniformly in  $t$ .

Case 3 :  $p^*(x, y) = 0$  and  $\gamma \in ]0, +\infty[$ , hence  $\frac{\gamma}{2} \leq \gamma_n \leq 1 + \gamma$  (up to choosing a larger  $n$ ). Then Proposition 9 b) implies  $|g(x, y) - v| \leq 2(2 + \gamma)\varepsilon$ . Moreover,  $p^*(x, y) = 0$  implies that  $\bar{g}^*(\hat{x}_\lambda^n, \hat{y}_\lambda^n)$  converges to  $\frac{aG^*(x'_n, y) + bG^*(x, y'_n)}{ap^*(x'_n, y) + bp^*(x, y'_n)}$  as  $\lambda$  go to 0, and by Proposition 9 c)  $\left| \frac{aG^*(x'_n, y) + bG^*(x, y'_n)}{ap^*(x'_n, y) + bp^*(x, y'_n)} - v \right| \leq 3\frac{1+\gamma/2}{\gamma/2}\varepsilon$ . Hence equation (19) yields  $|l_\lambda^{\hat{x}_\lambda^n, \hat{y}_\lambda^n}(t) - tv| \leq (7 + 2\gamma + 3\frac{1+\gamma/2}{\gamma/2})\varepsilon$  for all  $\lambda$  small enough, uniformly in  $t$ .

Case 4 :  $p^*(x, y) = 0$  and  $\gamma = +\infty$ , hence  $\gamma_n \geq 1$  (up to choosing a larger  $n$ ). Then  $\bar{g}^*(\hat{x}_\lambda^n, \hat{y}_\lambda^n)$  converges to  $\frac{aG^*(x'_n, y) + bG^*(x, y'_n)}{ap^*(x'_n, y) + bp^*(x, y'_n)}$  as  $\lambda$  go to 0, and by Proposition 9 c)  $\left| \frac{aG^*(x'_n, y) + bG^*(x, y'_n)}{ap^*(x'_n, y) + bp^*(x, y'_n)} - v \right| \leq 6\varepsilon$ . Thus equation (19) yields  $|l_\lambda^{\hat{x}_\lambda^n, \hat{y}_\lambda^n}(t) - tv| \leq 9\varepsilon$  for all  $\lambda$  small enough, uniformly in  $t$ .

As claimed, in every case we see that  $l(t) = tv$ . □

**Remark 13.**

Recall that  $Q(\cdot)$  and  $l(\cdot)$  represent expected *cumulated* occupation measure and payoff. By deriving these quantities with respect to  $t$  we get that the asymptotic probability  $q(t)$  of still being in the non absorbing state at time  $t$  is  $(1-t)^\gamma$ , and that asymptotically the current payoff is  $v$  at any time.

**Remark 14.**

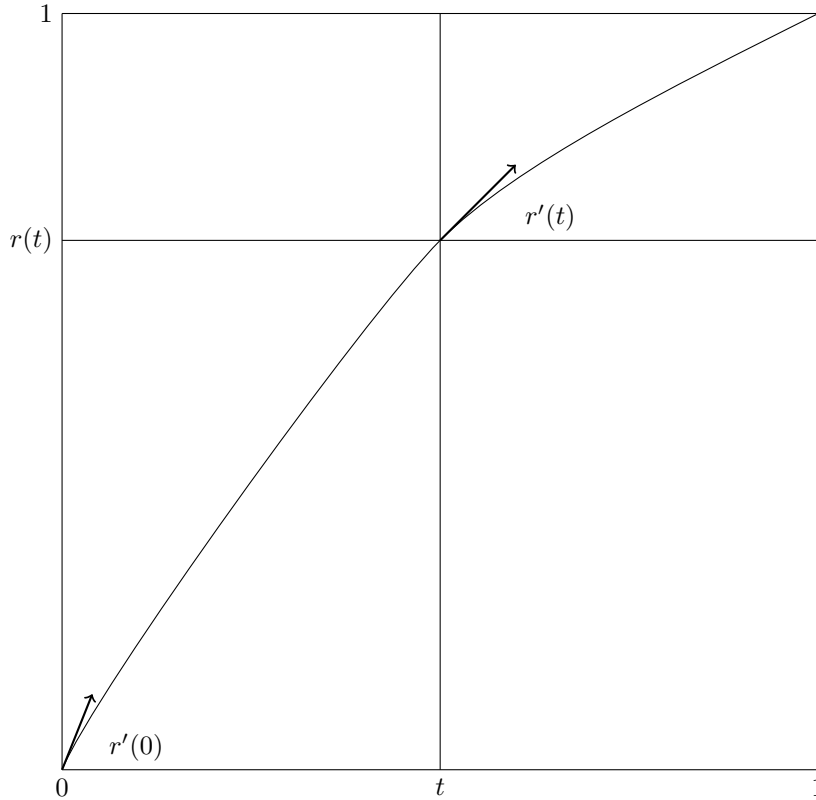
Let us give a simple heuristic behind the form  $(1-t)^\gamma$  for  $q(t)$ . Assuming that this quantity is well defined and smooth, note that at time  $t$  the remaining game has a length  $1-t$  and weight  $q(t) = 1-r(t)$  hence by renormalization (see figure below)

$$\frac{r'(t)}{1-r(t)}(1-t) = r'(0)$$

so that

$$-\frac{r'(t)}{1-r(t)} = -\frac{r'(0)}{1-t}$$

which leads, with  $r(0) = 0$  to  $r(t) = 1 - (1-t)^\gamma$  for some  $\gamma$ .



Let us illustrate now the four cases in the preceding proof by giving examples.

**Example 15.**

Consider the absorbing game

	L	R
T	1*	0
B	0	1*

(where a \* denotes an absorbing payoff) with asymptotic value 1. Let  $x = 1/2T + 1/2B$ . Then  $(x, x, n)$  is  $1/n$ -optimal in  $\mathbf{A}$  for Player 1, while any  $(y, y', b)$  is optimal for Player 2. Since  $p^*(x, y) > 0$  for all  $y$ , case 1 (see proof of Proposition 12) occurs for any choice of  $(y, y', b)$ , hence the corresponding  $\gamma$  is  $+\infty$  and  $Q(t) = 0$  for all  $t$ .

Notice that in  $\Gamma_\lambda$  the only optimal stationary strategy is  $(1/2, 1/2)$  for each player, leading to the same asymptotic trajectory  $Q(\cdot) = 0$ .

### Example 16.

Consider the absorbing game

	L	R
T	1*	0
B	0	1

with asymptotic value 1. Then  $(B, T, n)$  is  $1/n$ -optimal in  $\mathbf{A}$ , while any  $(y, y', b)$  is optimal. The associated  $\gamma$  is  $ny(L)$ , hence either  $y(L) = 0$  and case 2 holds with  $\gamma = 0$  and  $Q(t) = t$ , or  $y(L) > 0$  and case 4 occurs with  $\gamma = +\infty$  and  $Q(t) = 0$ .

Notice that in  $\Gamma_\lambda$  the only optimal stationary strategy is  $x_\lambda = y_\lambda = (\frac{\sqrt{\lambda}}{1+\sqrt{\lambda}}, \frac{1}{1+\sqrt{\lambda}})$  for each player. Since  $p^*(x_\lambda, y_\lambda) = \frac{\lambda}{(1+\sqrt{\lambda})^2} \sim \lambda$ , Lemma 10 implies that the asymptotic trajectory associated to optimal strategies is  $Q(t) = t - \frac{t^2}{2}$ . Moreover for any  $\gamma \geq 0$  the strategy of Player 2  $z_\lambda = (\frac{\gamma\sqrt{\lambda}}{1+\sqrt{\lambda}}, 1 - \frac{\gamma\sqrt{\lambda}}{1+\sqrt{\lambda}})$  is  $\varepsilon$ -optimal in  $\Gamma_\lambda$  for  $\lambda$  small enough, and  $p^*(x_\lambda, z_\lambda) \sim \gamma\lambda$  hence any  $Q(t)$  of the form  $\frac{1-(1-t)^{1+\gamma}}{1+\gamma}$  is an asymptotic behavior.

### Example 17.

Consider the Big Match

	L	R
T	1*	0*
B	0	1

with asymptotic value  $1/2$ . Let  $y = 1/2L + 1/2R$ . Then  $(B, T, 1)$  and  $(y, y, 0)$  are optimal in  $\mathbf{A}$ , with  $\gamma = 1$ . Hence case 3 holds, and the corresponding  $Q(t)$  is  $t - \frac{t^2}{2}$ . The optimal strategies in  $\Gamma_\lambda$  are  $(\frac{\lambda}{1+\lambda}, \frac{1}{1+\lambda})$  and  $(1/2, 1/2)$  respectively, leading to the same  $Q(t) = t - \frac{t^2}{2}$ .

### 3.3. Finite case.

We now prove that when the game is finite, the limit payoff trajectory is linear for every couple of nearly optimal stationary strategies, not only those given by Proposition 7. That is,  $l(t) = tv$  is a *SLOTP*.

**Proposition 18.** *Let  $\Gamma$  be a finite absorbing game with asymptotic value  $v$ ,  $x_\lambda$  and  $y_\lambda$  families of  $\varepsilon(\lambda)$ -optimal stationary strategies in  $\Gamma_\lambda$ , with  $\varepsilon(\lambda)$  going to 0 as  $\lambda$  goes to 0. Then for every  $t \in [0, 1]$ ,  $l_\lambda^{x_\lambda, y_\lambda}(t)$  converges to  $tv$  as  $\lambda$  goes to 0.*

We will use in the proof of this proposition the following elementary lemma given without proof.

**Lemma 19.** *Let  $a, b, c, d$  be real numbers with  $c$  and  $d$  positive. Then  $\min(\frac{a}{c}, \frac{b}{d}) \leq \frac{a+b}{c+d} \leq \max(\frac{a}{c}, \frac{b}{d})$  with equality if and only if  $\frac{a}{c} = \frac{b}{d}$*

*Proof of Proposition 18.* The result is clear for  $t = 0$  or  $1$ , assume by contradiction that it is false for some  $t \in ]0, 1[$ . Hence there is a sequence  $\lambda_n$  going to 0 and optimal strategies  $x_{\lambda_n}$  and  $y_{\lambda_n}$  such that  $l_{\lambda_n}^{x_{\lambda_n}, y_{\lambda_n}}(t)$  converges to  $tw$  with  $w \neq v$ . Up to extraction of subsequences,  $x_{\lambda_n}$  and  $y_{\lambda_n}$  converge to  $x$  and  $y$  respectively. Also up to extraction, all the following limits exist in  $[0, +\infty[$ :  $\alpha(i) = \lim_{n \rightarrow \infty} \frac{x_{\lambda_n}(i)}{\lambda_n}$ ,  $\beta(j) = \lim_{n \rightarrow \infty} \frac{y_{\lambda_n}(j)}{\lambda_n}$ , and  $\gamma = \lim_{n \rightarrow \infty} \frac{p^*(x_{\lambda_n}, y_{\lambda_n})}{\lambda_n}$ . If  $\gamma \neq 0$  (and hence  $p^*(x_{\lambda_n}, y_{\lambda_n}) > 0$  for  $n$  large enough), denote  $\bar{g}^*(x, y) := \lim \frac{G^*(x_{\lambda_n}, y_{\lambda_n})}{p^*(x_{\lambda_n}, y_{\lambda_n})}$ , which also exists up to extraction.

Recall formula (4):

$$r_{\lambda_n}(x_{\lambda_n}, y_{\lambda_n}) = \frac{\lambda_n g(x_{\lambda_n}, y_{\lambda_n}) + (1 - \lambda_n) G^*(x_{\lambda_n}, y_{\lambda_n})}{\lambda_n + (1 - \lambda_n) p^*(x_{\lambda_n}, y_{\lambda_n})} \quad (20)$$

and since  $x_\lambda$  and  $y_\lambda$  are families of  $\varepsilon(\lambda)$ -optimal strategies in  $\Gamma_\lambda$ ,  $r_{\lambda_n}(x_{\lambda_n}, y_{\lambda_n})$  converges to  $v$  as  $n$  tends to infinity.

Recall that by Lemma 10, at the limit

$$l(t) = \frac{1 - (1 - t)^{1+\gamma}}{1 + \gamma} g(x, y) + \left( t - \frac{1 - (1 - t)^{1+\gamma}}{1 + \gamma} \right) \bar{g}^*(x, y).$$

We first claim that  $\gamma \in ]0, +\infty[$ .

If  $\gamma = 0$ ,  $l(t) = tg(x, y)$ , and by near optimality of  $x_\lambda$  and  $y_\lambda$   $v = l(1) = g(x, y)$ , hence  $l(t) = tv$  a contradiction.

If  $\gamma = +\infty$ ,  $l(t) = t\bar{g}^*(x, y)$ , and by near optimality of  $x_\lambda$  and  $y_\lambda$   $v = l(1) = \bar{g}^*(x, y)$ , hence  $l(t) = tv$  a contradiction.

Hence  $\gamma \in ]0, +\infty[$ , and  $w$  is a nontrivial convex combination of  $g(x, y)$  and  $\bar{g}^*(x, y)$ . Since  $v = l(1)$  is also a convex combination of  $g(x, y)$  and  $\bar{g}^*(x, y)$ , the assumption that  $v \neq w$  implies  $g(x, y) \neq \bar{g}^*(x, y)$ . Assume without loss of generality  $g(x, y) < v < \bar{g}^*(x, y)$ .

We classify the actions  $i$  of Player 1 in 4 categories  $I_1$  to  $I_4$ :

- $i \in I_1$  if  $x(i) > 0$ ,
- $i \in I_2$  if  $x(i) = 0$  and  $\alpha(i) = +\infty$ ,
- $i \in I_3$  if  $x(i) = 0$  and  $\alpha(i) \in ]0, +\infty[$ ,
- $i \in I_4$  if  $x(i) = 0$  and  $\alpha(i) = 0$ .

Hence actions of category 1 are of order 1, actions of category 3 are of order  $\lambda$ , actions of category 4 are of order  $o(\lambda)$ , and actions of category 2 are played with probability going to 0 but large with respect to  $\lambda$ . Define categories  $J_1$  to  $J_4$  of player 2 in a similar way. By definition,

$$\frac{p^*(x_{\lambda_n}, y_{\lambda_n})}{\lambda_n} = \sum_{I \times J} \frac{p^*(i, j) x_{\lambda_n}(i) y_{\lambda_n}(j)}{\lambda_n} \quad (21)$$

Recall that the left hand side converges to  $\gamma \in ]0, +\infty[$ , hence up to extraction  $\frac{p^*(i, j) x_{\lambda_n}(i) y_{\lambda_n}(j)}{\lambda_n}$  converge in  $]0, +\infty[$  for any  $i$  and  $j$ , denote by  $\delta_{ij}$  the limit. If  $i$  and  $j$  are of category  $k$  and  $l$  with  $k + l > 4$  then  $\delta_{ij} = 0$ . If  $k + l < 4$  then  $\frac{x_{\lambda_n}(i) y_{\lambda_n}(j)}{\lambda_n}$  diverges to  $+\infty$  which implies that  $p^*(i, j) = 0 = \delta_{ij}$ .

Hence going to the limit in (21) we get that  $\gamma = \gamma_{1,3} + \gamma_{2,2} + \gamma_{3,1}$  where where  $\gamma_{1,3} := \sum_{I_1 \times J_3} p^*(i, j) x(i) \beta(j)$ ,  $\gamma_{2,2} := \sum_{I_2 \times J_2} \delta_{ij}$ , and  $\gamma_{3,1} := \sum_{I_3 \times J_1} p^*(i, j) \alpha(i) y(j)$ . Recall that  $\gamma > 0$  thus at least one of  $\gamma_{1,3}$ ,  $\gamma_{2,2}$  or  $\gamma_{3,1}$  is positive as well.

Similarly, passing to the limit in the definition of  $G^*(x_{\lambda_n}, y_{\lambda_n}) := \sum_{I \times J} G^*(i, j) x_{\lambda_n}(i) y_{\lambda_n}(j)$  yields  $\mu := \lim_{\lambda_n} \frac{G^*(x_{\lambda_n}, y_{\lambda_n})}{\lambda_n} = \mu_{1,3} + \mu_{2,2} + \mu_{3,1}$  where  $\mu_{1,3} := \sum_{I_1 \times J_3} x(i) \beta(j) G^*(i, j)$ ,  $\mu_{2,2} := \sum_{I_2 \times J_2} \delta_{ij} \bar{g}^*(i, j)$ , and  $\mu_{3,1} := \sum_{I_3 \times J_1} \alpha(i) y(j) G^*(i, j)$ . Note that if  $\gamma_{k,4-k} = 0$  for some  $k$  then  $\mu_{k,4-k} = 0$  as well.

Finally, going to the limit in equation (20) yields

$$v = \frac{g(x, y) + \mu_{1,3} + \mu_{2,2} + \mu_{3,1}}{1 + \gamma_{1,3} + \gamma_{2,2} + \gamma_{3,1}}$$

and similarly going to the limit in the definition of  $\bar{g}^*(x, y) := \lim_{\lambda_n} \frac{G^*(x_{\lambda_n}, y_{\lambda_n})}{p^*(x_{\lambda_n}, y_{\lambda_n})}$  yields

$$\bar{g}^*(x, y) = \frac{\mu_{1,3} + \mu_{2,2} + \mu_{3,1}}{\gamma_{1,3} + \gamma_{2,2} + \gamma_{3,1}}$$

Recall that we assumed  $\bar{g}^*(x, y) > v$ . By Lemma 19, there exists  $k$  such that  $\gamma_{k,4-k} > 0$  and  $\frac{\mu_{k,4-k}}{\gamma_{k,4-k}} \geq \bar{g}^*(x, y) > v$ .

Assume first that  $k = 1$ . Consider now the following strategy  $y'_{\lambda_n} : y'_{\lambda_n}(j) = 0$  for  $j \in J_3$ , and  $y'_{\lambda_n}(j) = y_{\lambda_n}(j)$  for all other  $j$  except for an arbitrary  $j_0 \in J_1$  for which  $y'_{\lambda_n}(j_0) = y_{\lambda_n}(j_0) + \sum_{j \in J_3} y_{\lambda_n}(j)$ . The only effect of this deviation is that now  $\gamma'_{1,3} = \mu'_{1,3} = 0$ . Hence

$$\lim_{n \rightarrow \infty} r_{\lambda_n}(x_{\lambda_n}, y'_{\lambda_n}) = \frac{g(x, y) + \mu_{2,2} + \mu_{3,1}}{1 + \gamma_{2,2} + \gamma_{3,1}}$$

which is strictly less than  $v$  by Lemma 19 since  $v < \frac{\mu_{1,3}}{\gamma_{1,3}}$ ; this contradicts the  $\epsilon(\lambda_n)$ -optimality of  $x_{\lambda_n}$ .



Assume next that  $k = 2$ . Consider now the following strategy  $y'_{\lambda_n} : y'_{\lambda_n}(j) = 0$  for  $j \in J_2$ , and  $y'_{\lambda_n}(j) = y_{\lambda_n}(j)$  for all other  $j$  except for an arbitrary  $j_0 \in J_1$  for which  $y'_{\lambda_n}(j_0) = y_{\lambda_n}(j_0) + \sum_{j \in J_2} y_{\lambda_n}(j)$ . The only effect of this deviation is that now  $\gamma'_{2,2} = \mu'_{2,2} = 0$ . Hence

$$\lim_{n \rightarrow \infty} r_{\lambda_n}(x_{\lambda_n}, y'_{\lambda_n}) = \frac{g(x, y) + \mu_{1,3} + \mu_{3,1}}{1 + \gamma_{2,2} + \gamma_{3,1}}$$

which is strictly less than  $v$  by Lemma 19 since  $v < \frac{\mu_{2,2}}{\gamma_{2,2}}$ ; this again contradicts the  $\epsilon(\lambda_n)$ -optimality of  $x_{\lambda_n}$ .

Finally assume that  $k = 3$ . Consider now the following strategy  $x'_{\lambda_n} : x_{\lambda_n}(i) = 2x_{\lambda_n}(i)$  for  $i \in I_3$  and  $x'_{\lambda_n}(i) = x_{\lambda_n}(i)$  for all other  $i$  except for an arbitrary  $i_0 \in I_1$  for which  $x'_{\lambda_n}(i_0) = x_{\lambda_n}(i_0) - \sum_{j \in J_3} x_{\lambda_n}(j)$  (which is nonnegative for  $n$  large enough). The only effect of this deviation is that now  $\gamma'_{3,1} = 2\gamma_{3,1}$  and  $\mu'_{3,1} = 2\mu_{3,1}$ . Hence

$$\lim_{n \rightarrow \infty} r_{\lambda_n}(x'_{\lambda_n}, y_{\lambda_n}) = \frac{g(x, y) + \mu_{1,3} + \mu_{2,2} + 2\mu_{3,1}}{1 + \gamma_{1,3} + \gamma_{2,2} + 2\gamma_{3,1}}$$

which is strictly more than  $v$  by Lemma 19 since  $v < \frac{\mu_{3,1}}{\gamma_{3,1}}$ ; this contradicts the  $\epsilon(\lambda_n)$ -optimality of  $y_{\lambda_n}$ .  $\square$

#### 4. FINITE STOCHASTIC GAMES

##### 4.1. Non algebraic limit trajectories.

Consider the following zero-sum stochastic game with two non absorbing states and two actions for each player. In the first state  $s_1$  (which is the starting state) the payoff and transitions are as follows:

	L	R
U	1*	0+
D	0	1

where  $*$  denotes absorption and  $+$  that there is a deterministic transition to state 2. Starting from the second state  $s_2$  the game is a linear variation of the Big Match:

	L	R
U	1*	-1*
D	-1	1

Since  $v_\lambda(s_2) = 0$  for all  $\lambda$  and since there is no return once the play has entered state  $s_2$ , it implies that the optimal play in state  $s_1$  is the same as in the Big Match, in which  $\gamma = 1$ . So in both states the optimal strategies in  $\Gamma_\lambda$  are  $D + \lambda U$  for Player 1 and  $1/2L + 1/2R$  for Player 2. By a scaling of time, the preceding section tells us that at the limit game, the probability of being in state 2 at time  $t$ , given that there were transition from  $s_1$  to  $s_2$  at time  $z$ , is  $\frac{1-t}{1-z}$ . Since (also from the preceding section) the time of transition

from  $s_1$  to another state (which is  $s_2$  with probability  $1/2$ ) has a uniform law on  $[0, 1]$ , the probability of being in  $s_2$  at time  $t$  is

$$p(t) = \frac{1}{2} \int_0^t \frac{1-t}{1-z} dz = -\frac{(1-t) \ln(1-t)}{2}.$$

Notice that this not an algebraic function of  $t$  as it was always the case in the preceding section. Similarly the probability of absorption before time  $t$  is  $1 - (1-t)(1 - \frac{\ln(1-t)}{2})$  and is also non algebraic.

#### 4.2. No $\varepsilon$ -optimal strategies of the form $x + a\lambda x'$ .

In the following game with two non absorbing states the payoff is always 1 in state  $a$  and -1 in state  $b$  with the following deterministic transitions

		L	R
state $a$	U	a	b
	D	b	1*

		L	R
state $b$	U	b	a
	D	a	-1*

It is easy to see that the asymptotic value is 0 and that optimal strategies in the  $\lambda$ -discounted game put a weight  $\sim \sqrt{\lambda}$  on  $D$  and  $R$  in both states, hence the absorbing probability is of the order of  $\lambda$  per stage in each state.

We show that strategies of the form  $(x_a + C_a \lambda x'_a, x_b + C_b \lambda x'_b)$  cannot guarantee more than -1 to player 1, as  $\lambda$  goes to 0.

- If  $x_a(D)x_b(D) > 0$ , player 2 plays  $L$  in  $a$  and  $R$  in  $b$  inducing an absorbing payoff of -1.

From  $a$  we reach eventually  $b$  were  $-1$  has a positive probability.

- If  $x_a(D) = 0, x_b(D) > 0$ , player plays  $R$  in both games inducing an absorbing payoff of -1.

The payoff will be absorbing with high probability in finite time and the relative probability of  $1^*$  vanishes with  $\lambda$ .

- If  $x_a(D) > 0, x_b(D) = 0$ , player plays  $L$  in both games inducing a non absorbing payoff of -1.

For  $\lambda$  small, most of the time the state is  $b$ .

- If  $x_a(D) = 0, x_b(D) = 0$ , player plays  $R$  in game  $a$  and  $L$  in game  $b$ . The event "absorbing payoff of 1" occurs at stage  $n$  if  $\omega_n = a$  and  $i_n = D$ . Hence  $\omega_{n-1} = b$  and  $i_{n-1} = D$ . Now this event " $i_n = D$  and  $i_{n-1} = D$ " has probability of order  $\lambda^2$ . Then the absorbing component of the  $\lambda$  discounted payoffs converges to 0 with  $\lambda$ . Moreover the non absorbing payoff is mainly  $-1$ .

5. AN ABSORBING GAME WITH COMPACT ACTION SETS AND NON LINEAR *LOTP*

We consider the following absorbing game with compact actions sets. There are three states, two absorbing  $0^*$  and  $-1^*$ , and the non absorbing state  $\omega$ , in which the payoff is 1 whatever the actions taken. The sets of action are  $X = Y = \{0\} \cup \{1/n, n \in \mathbb{N}^*\}$  with the usual distance. The probabilities of absorption are given by :

$$\rho(0^*|x, y) = \begin{cases} 0 & \text{if } x = y \\ \sqrt{y} & \text{if } x \neq y \end{cases}$$

and

$$\rho(-1^*|x, y) = \begin{cases} y & \text{if } x = y \\ 0 & \text{if } x \neq y \end{cases}$$

It is easily checked that both functions  $\rho(0^*|\cdot, \cdot)$  and  $\rho(-1^*|\cdot, \cdot)$  are (jointly) continuous.

**Proposition 20.** *For any discount factor  $\lambda \in ]0, 1]$ , 0 (resp. 1) is optimal for Player 1 (resp. Player 2) in the  $\lambda$ -discounted game, and  $v_\lambda = \lambda$ .*

*The corresponding payoff trajectory is:  $l(t) = 0$  on  $[0, 1]$ .*

*Proof.* Action 0 of Player 1 ensures that there will never be absorption to state  $-1^*$ , and thus that the stage payoff from stage 2 on is nonnegative. Action 1 of Player 2 ensures that there will be absorption with probability 1 at the end of stage 1, and thus that the stage payoff from stage 2 on is nonpositive. Since the payoff in stage 1 is 1 irrespective of player's actions, the proposition is established.

Notice that the play under this couple of optimal strategies is simple: there is immediate absorption to  $0^*$ , and in particular the limit payoff trajectory is linear and equals 0 for every time  $t$ .  $\square$

We now prove that there are other  $\varepsilon$ -optimal strategies, with a different limit payoff trajectory. Denote  $\{\lambda\} := \frac{1}{\lceil 1/\lambda \rceil}$  where  $\lceil \cdot \rceil$  is the integer part ; hence  $\lambda \leq \{\lambda\} < \frac{\lambda}{1-\lambda}$  and  $1/\{\lambda\} \in \mathbb{N}^*$  for all  $\lambda \in ]0, 1]$ .

**Proposition 21.** *For any discount factor  $\lambda \in ]0, 1]$ ,  $\{\lambda\}$  is  $\lambda$ -optimal for Player 1 and  $\sqrt{\lambda}$ -optimal for Player 2 in the  $\lambda$ -discounted game.*

*The corresponding payoff trajectory is:  $l(t) = t - t^2$ .*

*Proof.* If both players play  $\{\lambda\}$ , the payoff in the  $\lambda$ -discounted game is, according to formula (4),

$$r_\lambda(\{\lambda\}, \{\lambda\}) = \frac{\lambda - (1 - \lambda)\{\lambda\}}{\lambda + (1 - \lambda)\{\lambda\}}$$

which is nonnegative since  $\{\lambda\} < \frac{\lambda}{1-\lambda}$ . On the other hand, since  $\lambda \leq \{\lambda\}$ , one gets  $r_\lambda(\{\lambda\}, \{\lambda\}) \leq \lambda$ .

If Player 1 plays  $\{\lambda\}$  while Player 2 plays  $y \neq \{\lambda\}$ , there is no absorption to  $-1^*$  hence  $r_\lambda(\{\lambda\}, y) \geq 0$ . Thus  $\{\lambda\}$  is  $\lambda$ -optimal for Player 1.

If Player 2 plays  $\{\lambda\}$  while Player 1 plays  $x \neq \{\lambda\}$ , then, according once again to formula (4),

$$\begin{aligned} r_\lambda(x, \{\lambda\}) &= \frac{\lambda}{\lambda + (1 - \lambda)\sqrt{\{\lambda\}}} \\ &\leq \frac{\lambda}{\lambda + (1 - \lambda)\sqrt{\lambda}} \\ &\leq \sqrt{\lambda}. \end{aligned}$$

Thus  $\{\lambda\}$  is  $\sqrt{\lambda}$ -optimal for Player 2.

Notice that while the limit value is 0 and  $(\{\lambda\}, \{\lambda\})$  is a couple of near optimal strategies, along the induced play the nonabsorbing payoff is 1 and the absorbing payoff is -1. One can compute that the associated  $\gamma$  is 1, hence under these strategies  $Q(t) = t - \frac{t^2}{2}$ . So that the accumulated limit payoff up to time  $t$  is  $t - t^2$ , which is non linear and positive for every  $t \in ]0, 1[$ .  $\square$

Basically the players use a jointly controlled procedure either to follow  $(\{\lambda\}, \{\lambda\})$  or to get at most (resp. at least) 0.

## 6. CONCLUDING COMMENTS

A first series of interesting open questions is directly related to the results presented here such as:

- extension of Proposition 18 to non stationary strategies,
- or more global analysis in the framework of
- arbitrary (not discounted) evaluations where optimal strategies are not stationary,
- general stochastic games.

It is also natural to consider other families of repeated games: a first class that is of interest is games with incomplete information. The natural equivalent of *LOTM* in this framework is the way information is transmitted during the game.

## REFERENCES

- [1] Aumann R.J. and M. Maschler: *Repeated Games with Incomplete Information*, M.I.T. Press, (1995).
- [2] Cardaliaguet P., R. Laraki and S. Sorin: A continuous time approach for the asymptotic value in two-person zero-sum repeated games. *SIAM J. Control and Optimization*, **50**, 1573-1596, (2012).
- [3] Kohlberg E.: Repeated games with absorbing states. *Annals of Statistics*, **2**, 724-738, (1974).
- [4] Laraki R.: Explicit formulas for repeated games with absorbing states. *International Journal of Game Theory*, **39**, 53-69, (2010).
- [5] Mertens J.-F. and A. Neyman: Stochastic games. *International Journal of Game Theory*, **10**, 53-66, (1981).
- [6] Mertens J.-F., A. Neyman and D. Rosenberg: Absorbing games with compact action spaces. *Mathematics of Operations Research*, **34**, 257-262, (2009).
- [7] Mertens J.-F. and S. Zamir: The value of two-person zero-sum repeated games with lack of information on both sides. *International Journal of Game Theory*, **1**, 39-64, (1971).

- [8] Oliu-Barton M. and B. Ziliotto: Constant payoff in zero-sum stochastic games, arXiv:1811.04518v1, (2018).
- [9] Rosenberg D. and S. Sorin: An operator approach to zero-sum repeated games. *Israel Journal of Mathematics*, **121**, 221-246, (2001).
- [10] Shapley L. S.: Stochastic games. *Proceedings of the National Academy of Sciences of the U.S.A.*, **39**, 1095-1100, (1953).
- [11] Sorin S.: *A First Course on Zero-Sum Repeated Games*. Springer, (2002).
- [12] Sorin S. and G. Vigeral: Existence of the limit value of two person zero-sum discounted repeated games via comparison theorems, *Journal of Optimization Theory and Applications*, **157**, 564-576, (2013) .
- [13] Sorin S. and G. Vigeral: Reversibility and oscillations in zero-sum discounted stochastic games, *Journal of Dynamics and Games*, **2**, 103-115, (2015).
- [14] Sorin S., X. Venel and G. Vigeral: Asymptotic properties of optimal trajectories in dynamic programming, *Sankhya*, **72-A**, 237-245, (2010).
- [15] Vigeral G.: A zero-sum stochastic game with compact action sets and no asymptotic value, *Dynamic Games and Applications*, **3**, 172-186, (2013).
- [16] Ziliotto B.: Zero-sum repeated games: counterexamples to the existence of the asymptotic value and the conjecture  $\maxmin = \lim v_n$ , *Annals of Probability*, **44**, 1107-1133, (2016).

**Sylvain Sorin**, SORBONNE UNIVERSITÉ, UPMC PARIS 06, INSTITUT DE MATHÉMATIQUES DE JUSSIEU-PARIS RIVE GAUCHE, UMR 7586, CNRS, F-75005, PARIS, FRANCE

*E-mail address:* `sylvain.sorin@imj-prg.fr`

<https://webusers.imj-prg.fr/sylvain.sorin>

**Guillaume Vigeral (corresponding author)**, UNIVERSITÉ PARIS-DAUPHINE, PSL RESEARCH UNIVERSITY, CNRS, CEREMADE, PLACE DU MARÉCHAL DE LATTRE DE TASSIGNY. 75775 PARIS CEDEX 16, FRANCE

*E-mail address:* `vigeral@ceremade.dauphine.fr`

<http://www.ceremade.dauphine.fr/vigeral/indexenglish.html>