



HAL
open science

Monitoring vegetal landscapes of the Gabna reindeer herders' community (northern Sweden): links between current temperatures raises and ecosystem borealization

Romain Courault, Marianne Cohen

► To cite this version:

Romain Courault, Marianne Cohen. Monitoring vegetal landscapes of the Gabna reindeer herders' community (northern Sweden): links between current temperatures raises and ecosystem borealization. Atelier Climat et Impacts, Session 5: variabilités actuelle et passée du climat des hautes latitudes : rôle de la cryosphère, rétroactions et impacts, Nov 2018, Orsay, France. . hal-01952387

HAL Id: hal-01952387

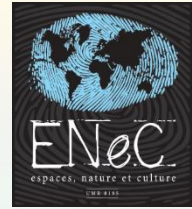
<https://hal.science/hal-01952387>

Submitted on 7 Jul 2019

HAL is a multi-disciplinary open access archive for the deposit and dissemination of scientific research documents, whether they are published or not. The documents may come from teaching and research institutions in France or abroad, or from public or private research centers.

L'archive ouverte pluridisciplinaire **HAL**, est destinée au dépôt et à la diffusion de documents scientifiques de niveau recherche, publiés ou non, émanant des établissements d'enseignement et de recherche français ou étrangers, des laboratoires publics ou privés.

Monitoring vegetal landscapes of the Gabna reindeer herders community (northern Sweden): links between current temperatures raises and ecosystems borealization

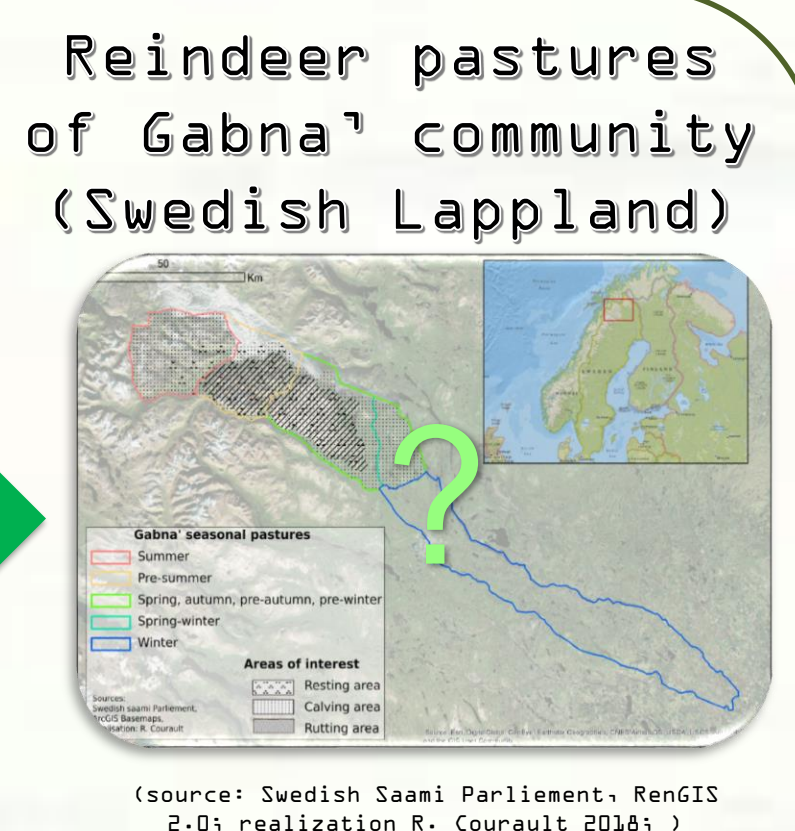
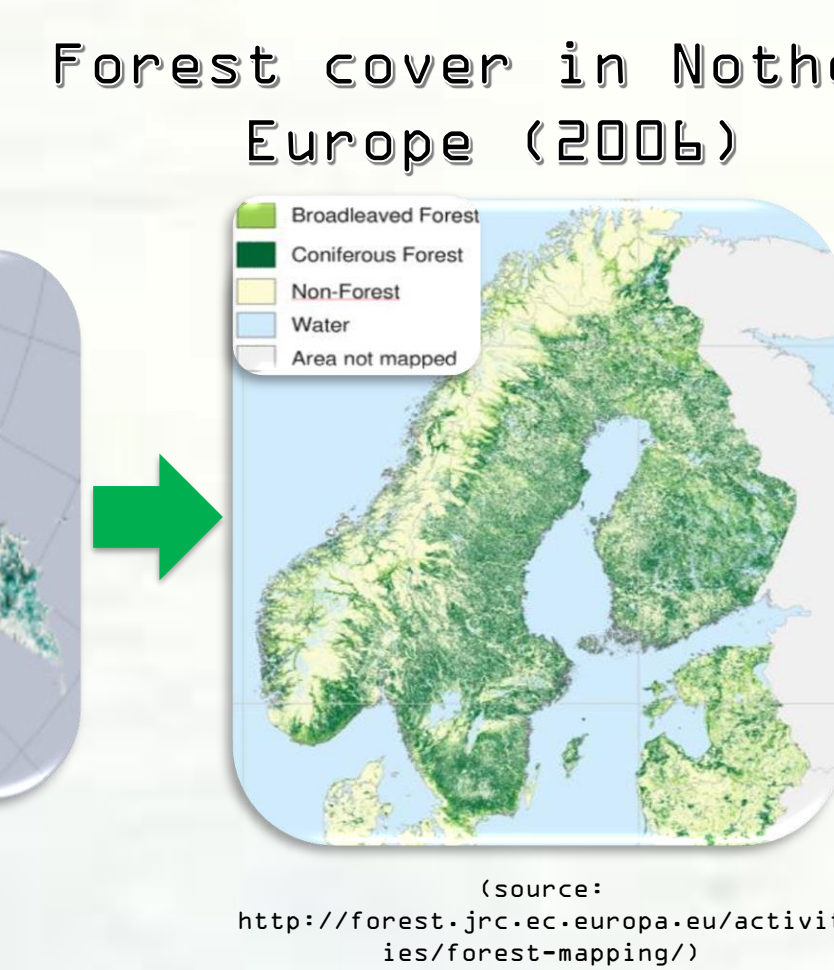
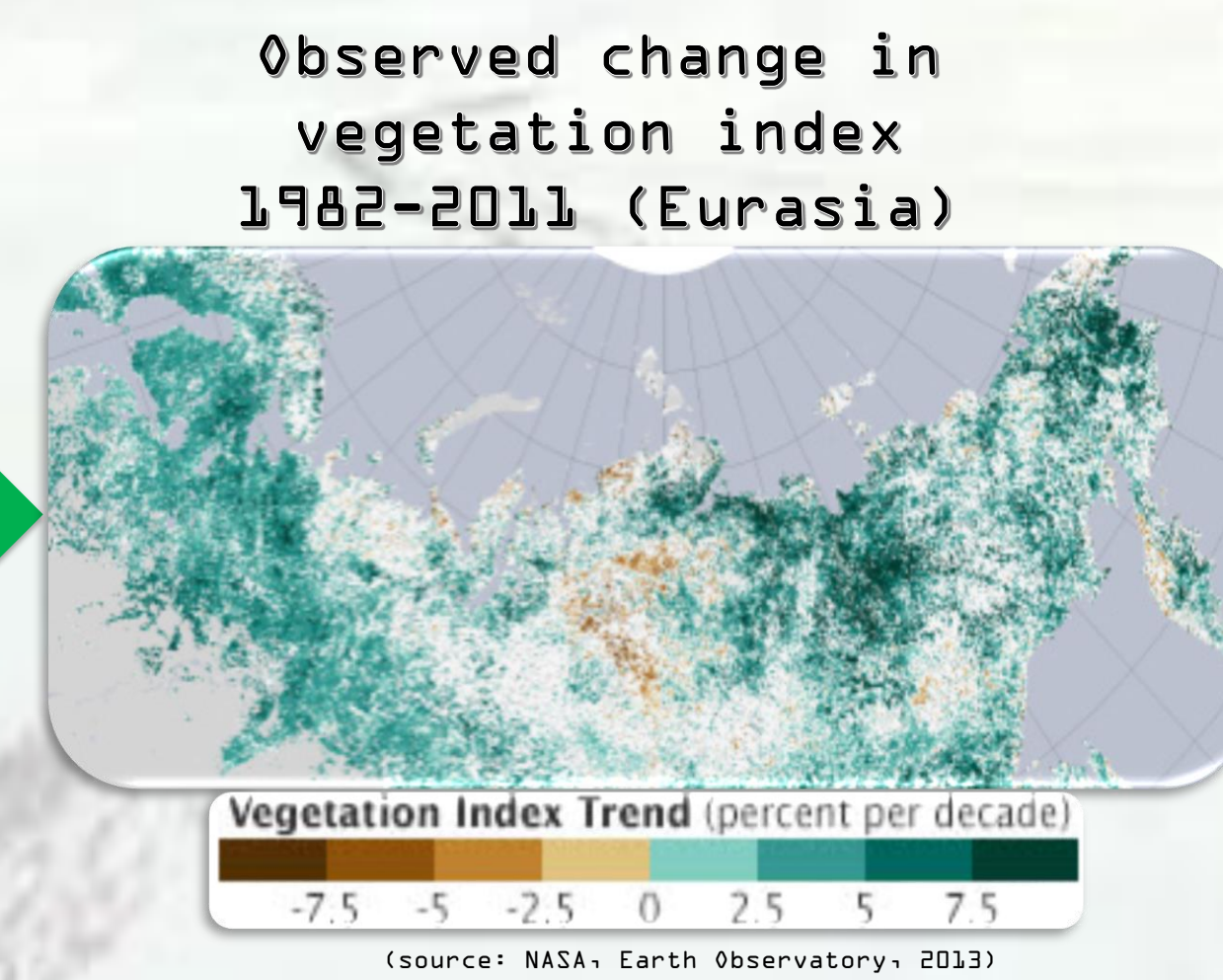
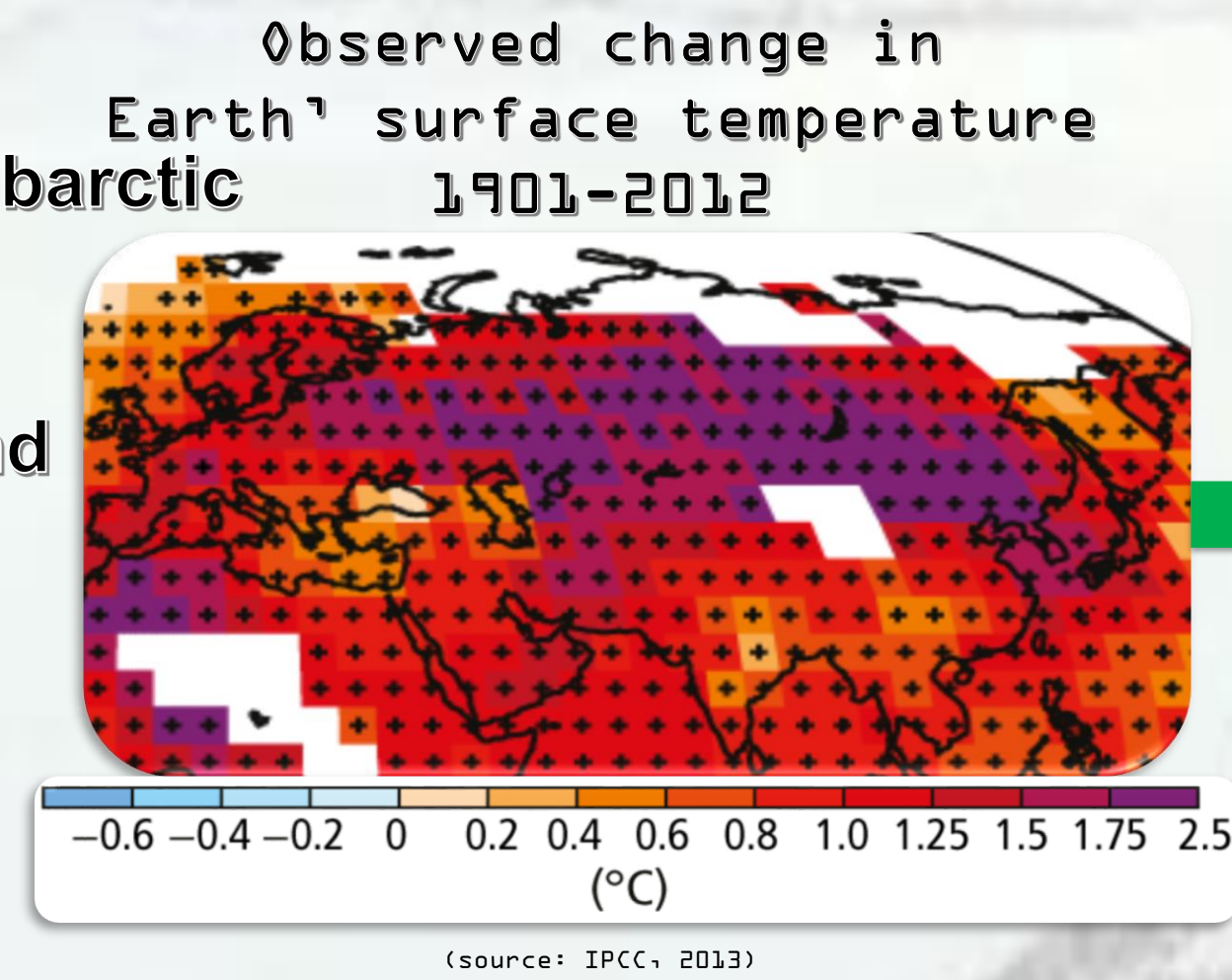


R. Courault (1), M. Cohen (1)

(1)UMR 8185 Espaces Nature et Culture; Sorbonne-Université - Faculté des Lettres, Geography, Paris, France

Introduction

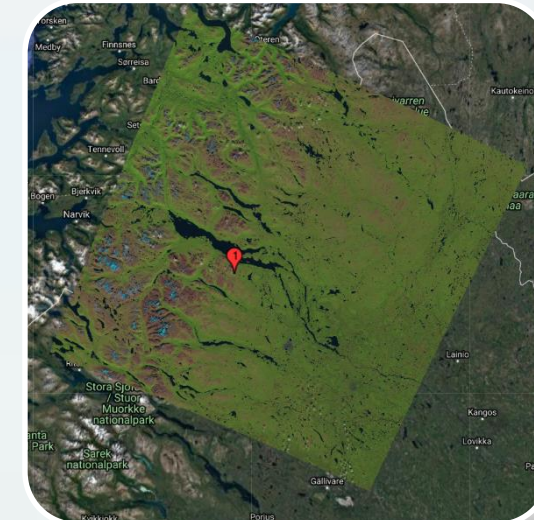
- Climate warming effects are stronger for arctic and subarctic regions (fig.1)
- This tends to borealize arctic and subarctic ecosystems (recent process of increase of woody and shrubby biomass; fig. 2 and 3)
- The Gabna community is a saami reindeer herders traditional association in northern Sweden (fig.4)
- We want to know here how much reindeers seasonal pastures (and other pastoral units) are impacted by borealization



Material and methods

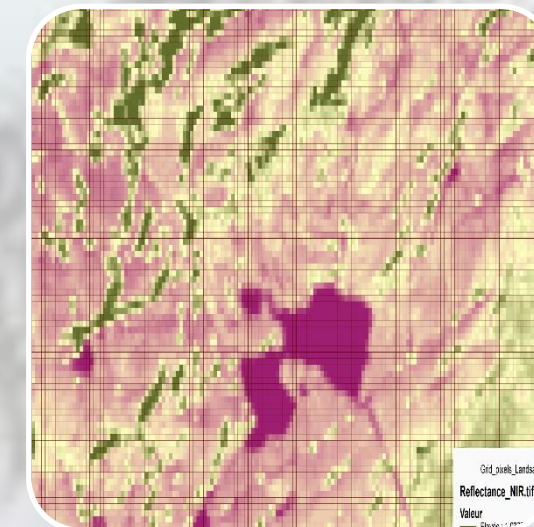
1- Imagery acquisition

- Making diachrony comparable...
- Landsat surface reflectance products
- End of July 1990 – 2006 – 2017 (same tile: WRS 2, path : 197, row : 012)



2- NDVI thresholds computation

- NDVI thresholds (intensity) as proxy for vegetation cover...
- NDVI > 0.8 (woody layer extent)
- NDVI > 0.5 (shrubby layer extent)
- NDVI > 0.15 (herbaceous layer)



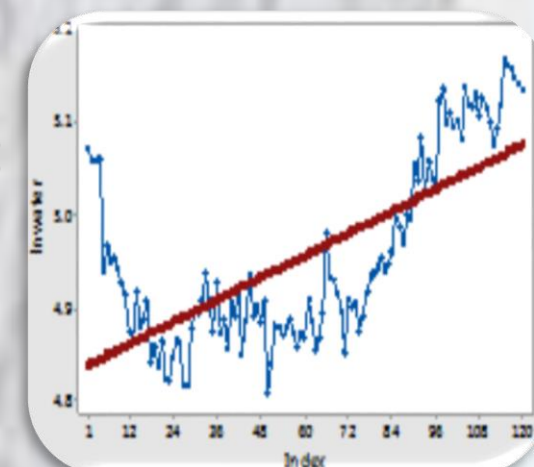
3- Multi-date extent quantification

- Is treeline advancing? Which seasonal pastures are the most impacted?
- GIS extent calculation (RasterToVector and Areas Attributes Fields creation)

NDVI >0,7 (km2)	1990	2017
Gabna unit	973,5	1631
Calving area	181,7	345,8

4- Linking vegetation dynamics with monthly temperatures

- For the same time period, are monthly T°C showing the same evolution?
- Monthly T°C 1988-2017 (Abisko)
- Mann-Kendall (MK) trend test
- Magnitudes of the linear models time-T°C



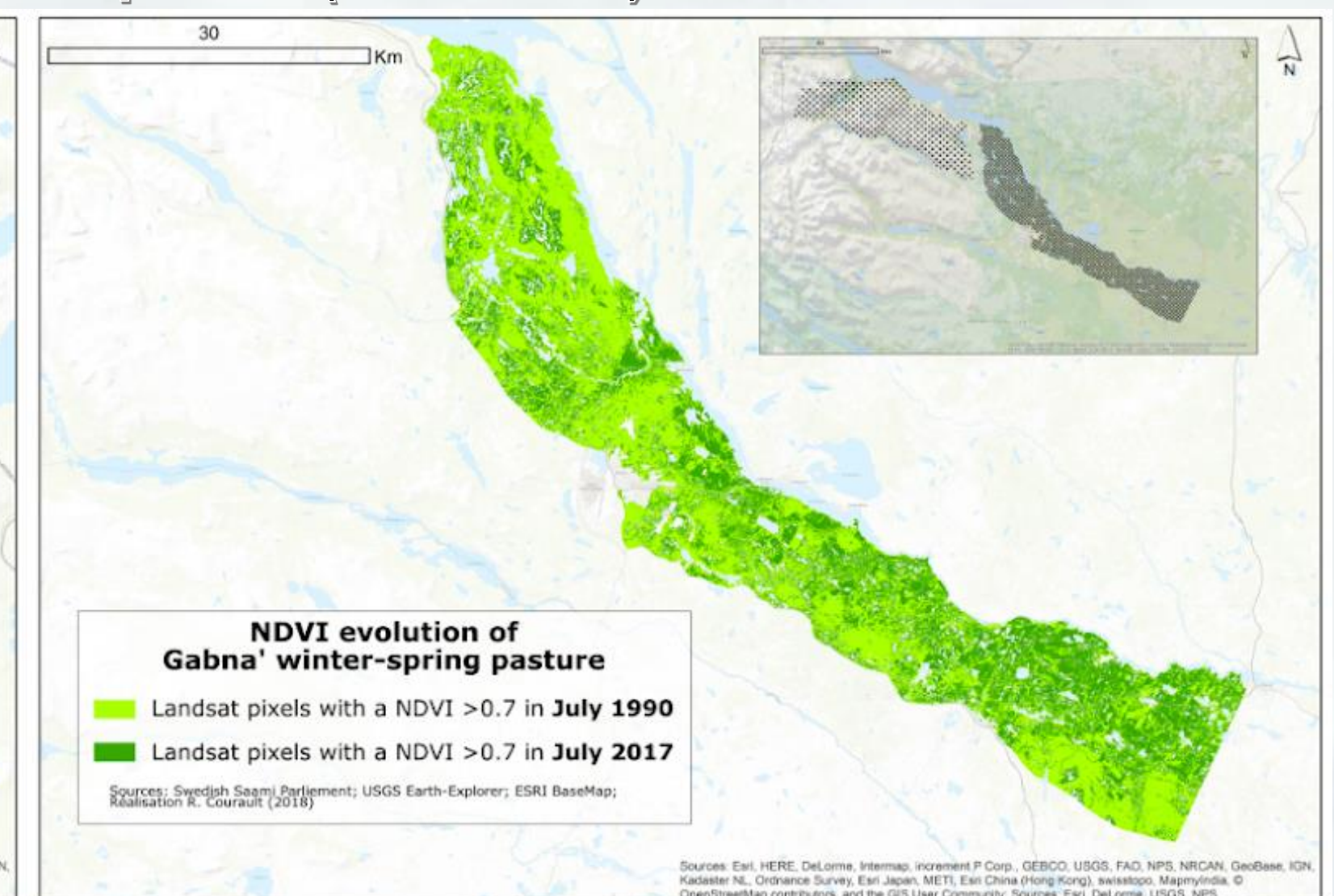
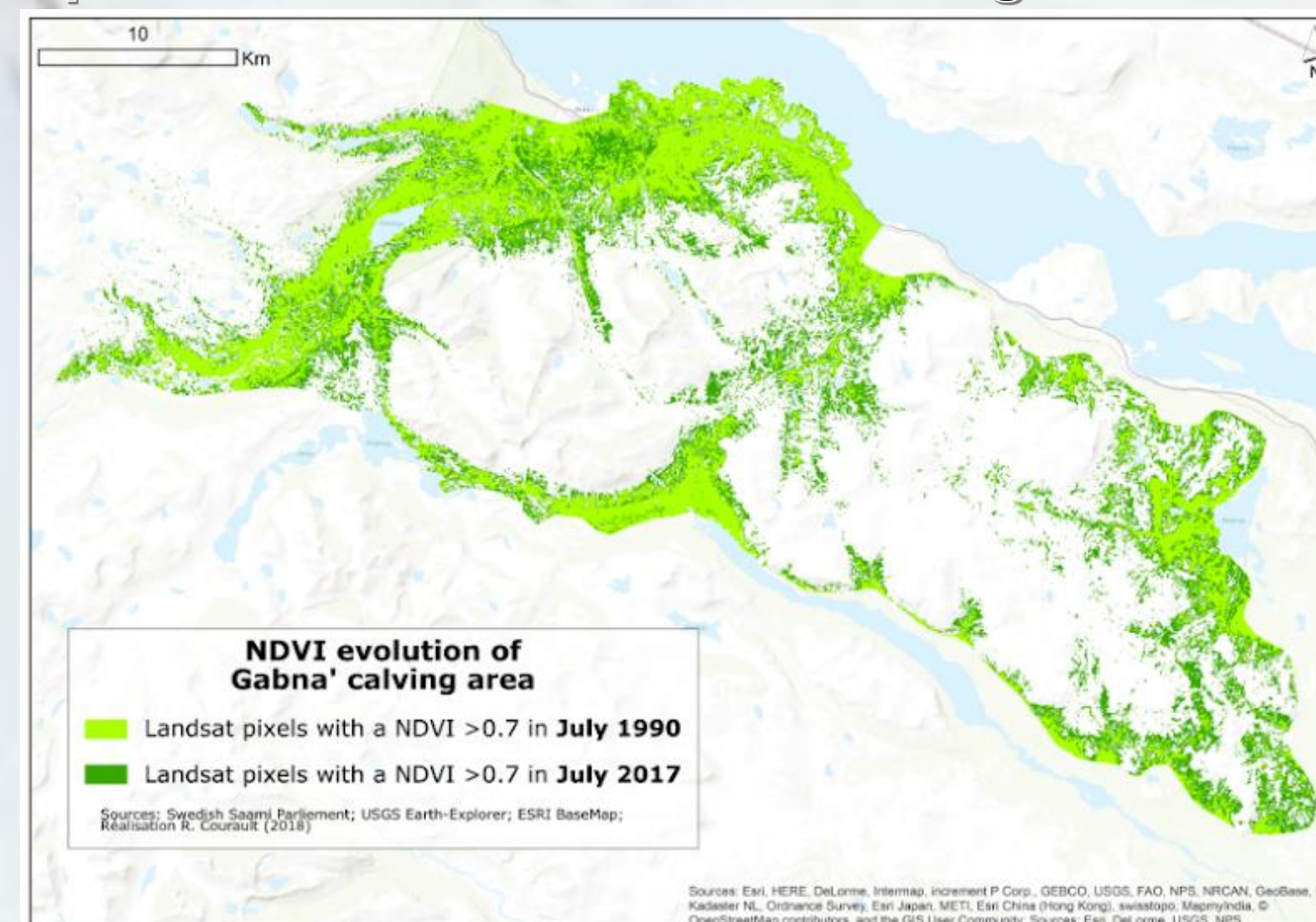
Results

1- Pastoral units : strong evidence for borealization/shrubification (1988-2017)

- Across the time period (1990-2017), results show a general increase of surfaces with NDVI is >0.15; >0.5; 0.7 for each spatial unit
- For the threshold of NDVI >0.7, the rise is stronger for winter pastures (+81,1%) and shoulder seasons (spring-winter +69,7%) compared to summer pastures (pre-summer: +58,2%, summer +44,1%). Vegetal formations described by high woody species or low woody species are densifying and / or in extension

2- Regional temperatures : winters preceding the monitored years showing significant positive anomalies

- 9 months on 12 present an increasing trend, with a modeled trend going from +0,5 to 2,1°C (1990-2017). MK trend tests show that january, may and september are particularly significant (p-value <0,05)
- Winter temperatures (DJF) which precede the three phenological peaks present positive anomalies compared to means calculated using the reference period (1990-2017)



References

FORBES Bruce and KUMPULA Timo. The Ecological Role and Geography of Reindeer (*Rangifer tarandus*) in Northern Eurasia. *Geography Compass*, 2009, 3 (4): 1356–1380.
 HEDENAS, Henrik, OLSSON, Håkan, JONASSON, Christer, et al. Changes in tree growth, biomass and vegetation over a 13-year period in the Swedish sub-Arctic. *Ambio*, 2011, vol. 40, no 6, p. 672.
 LINDBLADH, Matts, AXELSSON, Anna-Lena, HULTBERG, Tove, et al. From broadleaves to spruce—the borealization of southern Sweden. *Scandinavian Journal of Forest Research*, 2014, vol. 29, no 7, p. 686-696.
 PETTORELLI, Nathalie, VIK, Jon Olav, MYSTERUD, Atle, et al. Using the satellite-derived NDVI to assess ecological responses to environmental change. *Trends in ecology & evolution*, 2005, vol. 20, no 9, p. 503-510.
 IPCC, 2013

<https://www.sametinget.se/english>

<http://forest.jrc.ec.europa.eu/activities/forest-mapping>

More informations

Courault.romain@gmail.com
https://www.researchgate.net/profile/Romain_Courault