



**HAL**  
open science

# Bayesian Nonparametric Priors for Hidden Markov Random Fields: Application to Image Segmentation

Hongliang Lu, Julyan Arbel, Florence Forbes

► **To cite this version:**

Hongliang Lu, Julyan Arbel, Florence Forbes. Bayesian Nonparametric Priors for Hidden Markov Random Fields: Application to Image Segmentation. IFSS 2018 - 2nd Italian-French Statistics Seminar, Sep 2018, Grenoble, France. pp.1. hal-01950666

**HAL Id: hal-01950666**

**<https://hal.science/hal-01950666>**

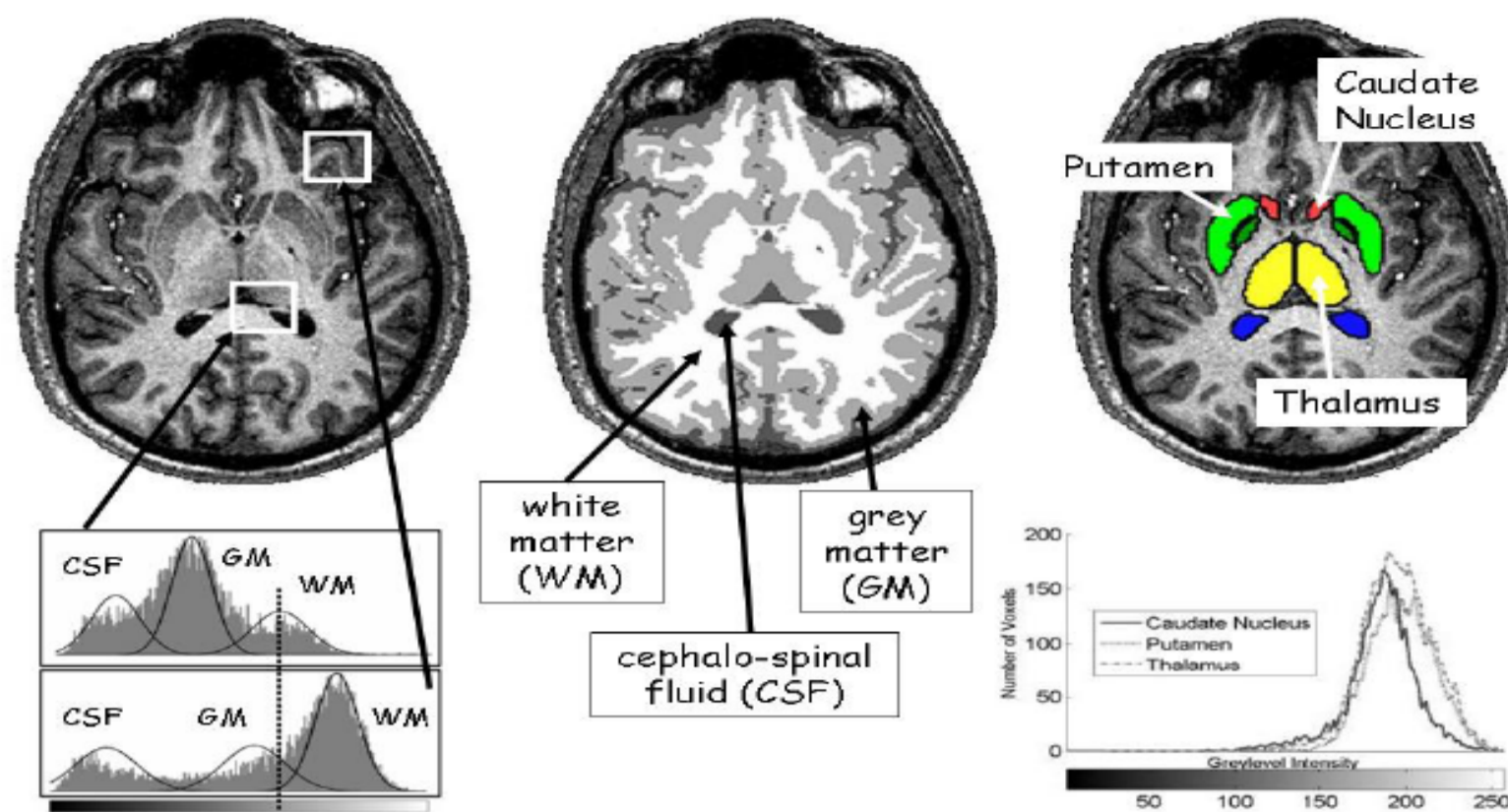
Submitted on 11 Dec 2018

**HAL** is a multi-disciplinary open access archive for the deposit and dissemination of scientific research documents, whether they are published or not. The documents may come from teaching and research institutions in France or abroad, or from public or private research centers.

L'archive ouverte pluridisciplinaire **HAL**, est destinée au dépôt et à la diffusion de documents scientifiques de niveau recherche, publiés ou non, émanant des établissements d'enseignement et de recherche français ou étrangers, des laboratoires publics ou privés.



## I. BACKGROUND AND MOTIVATION



**Figure 1:** Illustration of challenges for unsupervised image segmentation: blur, noise, color/contrast imperfection, partial volume effect (large slice thickness), anatomic variability and complexity, number of segments...

Image segmentation in real-world applications is typically performed on noisy images. To achieve better segmentation performance, several extensions of the usual **Bayesian nonparametric (BNP) mixture model** with spatial regularization are therefore necessary.

## II. BNP PRIORS

The **Dirichlet process (DP)** is one of the most commonly used BNP priors. It is a **random process**  $G$  defined over a probability space  $\mathcal{Y}$  and characterized by a **concentration parameter**  $\alpha$  and a **base distribution**  $G_0$ , such that for any finite partition  $\{A_1, \dots, A_p\}$  of  $\mathcal{Y}$ , the random vector  $(P(A_1), \dots, P(A_p))$  is **Dirichlet distributed**:

$$(P(A_1), \dots, P(A_p)) \sim \text{Dir}(\alpha G_0(A_1), \dots, \alpha G_0(A_p))$$

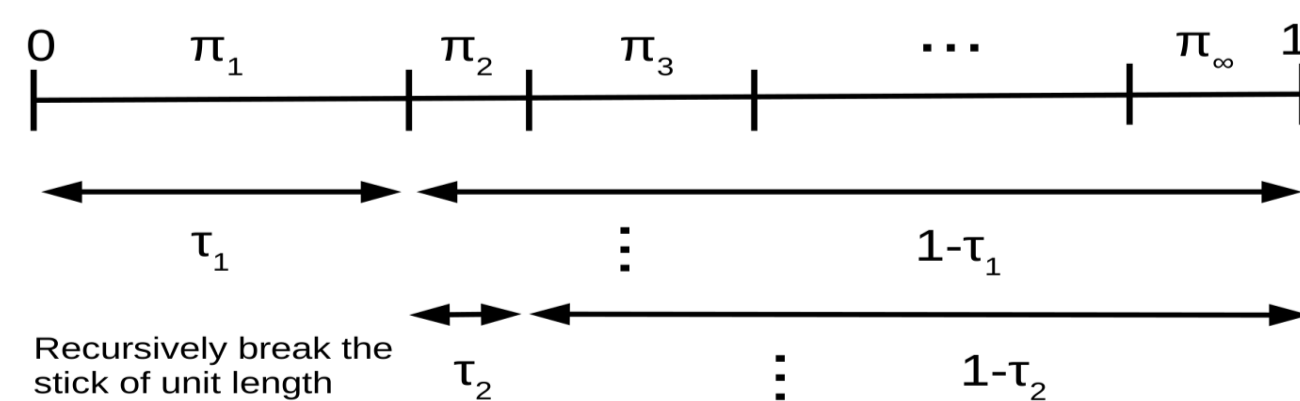
which is often denoted by  $G \sim \text{DP}(\alpha, G_0)$ .

## III. STICK-BREAKING CONSTRUCTION

The **DP** has almost surely **discrete** realizations. It can be built by the **stick-breaking construction**:

$$G = \sum_{k=1}^{\infty} \pi_k(\tau) \delta_{\theta_k^*} = \sum_{k=1}^{\infty} \left[ \tau_k \prod_{l < k} (1 - \tau_l) \right] \delta_{\theta_k^*}$$

where  $\theta_k^* \stackrel{\text{iid}}{\sim} G_0$  and  $\tau_k \stackrel{\text{iid}}{\sim} \mathcal{B}(1, \alpha)$ .



## REFERENCES

- [1] P. Orbanz and J. M. Buhmann, IJCV, vol. 77, no 1-3, p. 25-45, 2008.
- [2] M. Albughdadi *et al.*, Signal Processing, 135:132-146, 2017.
- [3] F. Forbes and N. Peyrard, IEEE TPAMI, 25(9):1089-1101, 2003.
- [4] P. Arbelaez *et al.*, IEEE TPAMI, Vol. 33, No. 5, pp. 898-916, May 2011.
- [5] S. P. Chatzis, Pattern Recognition, 46(6): 1595-1603, 2013.

## IV. DP-POTTS MIXTURE MODEL

The usual **DP mixture model** assumes that a set of data points  $\mathbf{y} = \{y_1, \dots, y_N\}$  with  $y_i \in \mathbb{R}^D$  (e.g., pixels) can be generated through the following hierarchical representation:

- $G \sim \text{DP}(\alpha, G_0)$
- $\theta_i | G \sim G, i = 1, \dots, N$
- $y_i | \theta_i \sim F(y_i | \theta_i), i = 1, \dots, N$

where  $\theta = \{\theta_1, \dots, \theta_N\}$  denotes a set of model parameters. To take into account spatial constraints, we introduce a **Potts model** component using a set of assignment variables  $\mathbf{z} = \{z_1, \dots, z_N\}$  with  $z_i = z(\theta_i)$  so as to favor spatial aggregation [1]:

$$M(\theta) \propto \exp \left( \beta \sum_{i \sim j} \delta_{z(\theta_i)=z(\theta_j)} \right)$$

with  $\beta$  being the **regularization parameter**. The **DP mixture model** is thus extended to become the **DP-Potts mixture model**:

- $G \sim \text{DP}(\alpha, G_0)$
- $\theta | M, G \sim M(\theta) \times \prod_i G(\theta_i)$
- $y_i | \theta_i \sim F(y_i | \theta_i), i = 1, \dots, N$

Accordingly, the **stick-breaking construction** of the **DP-Potts mixture model** can be summarized as follows:

- $\theta_k^* | G_0 \sim G_0$  and  $\tau_k | \alpha \sim \mathcal{B}(1, \alpha), k = 1, 2, \dots$
- $\pi_k(\tau) = \tau_k \prod_{l=1}^{k-1} (1 - \tau_l), k = 1, 2, \dots$
- $p(\mathbf{z} | \tau; \beta) \propto \prod_i \pi_{z_i}(\tau) \exp(\beta \sum_{i \sim j} \delta_{z_i=z_j}), z_i = 1, 2, \dots$
- $y_i | z_i, \theta^* \sim F(y_i | \theta_{z_i}^*), i = 1, \dots, N$

## V. VARIATIONAL BAYES

In a Bayesian setting, we need to evaluate the intractable posterior distribution  $p(\mathbf{z}, \tau, \alpha, \theta^* | \mathbf{y}; \phi)$  ( $\phi$  denotes a set of hyperparameters) which can be estimated by means of the **mean-field approximation**:

$$q(\mathbf{z}, \tau, \alpha, \theta^*) \simeq q_{\mathbf{z}}(\mathbf{z}) q_{\tau}(\tau) q_{\alpha}(\alpha) q_{\theta^*}(\theta^*)$$

**Variational Bayes (VB)** consists of alternating maximization of **free energy**

$$\mathcal{F}(q_{\mathbf{z}}, q_{\tau}, q_{\alpha}, q_{\theta^*}; \phi) = \mathbb{E}_{q_{\mathbf{z}} q_{\tau} q_{\alpha} q_{\theta^*}} \left[ \log \frac{p(\mathbf{z}, \tau, \alpha, \theta^*; \mathbf{y}; \phi)}{q_{\mathbf{z}} q_{\tau} q_{\alpha} q_{\theta^*}} \right]$$

which implies [2]

- **E-steps:** VE- $\mathbf{z}$ , VE- $\alpha$ , VE- $\tau$  and VE- $\theta^*$ .
- **M-steps:**  $\phi$  updating is straightforward except for  $\beta$ .

Here, **M- $\beta$  step** leads to the estimation of  $\beta$ :

$$\hat{\beta} = \arg \max_{\beta} \mathbb{E}_{q_{\mathbf{z}} q_{\tau}} [\log p(\mathbf{z} | \tau; \beta)]$$

which involves  $p(\mathbf{z} | \tau; \beta) = \mathcal{K}(\beta, \tau)^{-1} \exp(V(\mathbf{z}; \tau, \beta))$  with the **normalization constant**  $\mathcal{K}(\beta, \tau)$  and the **potential function**

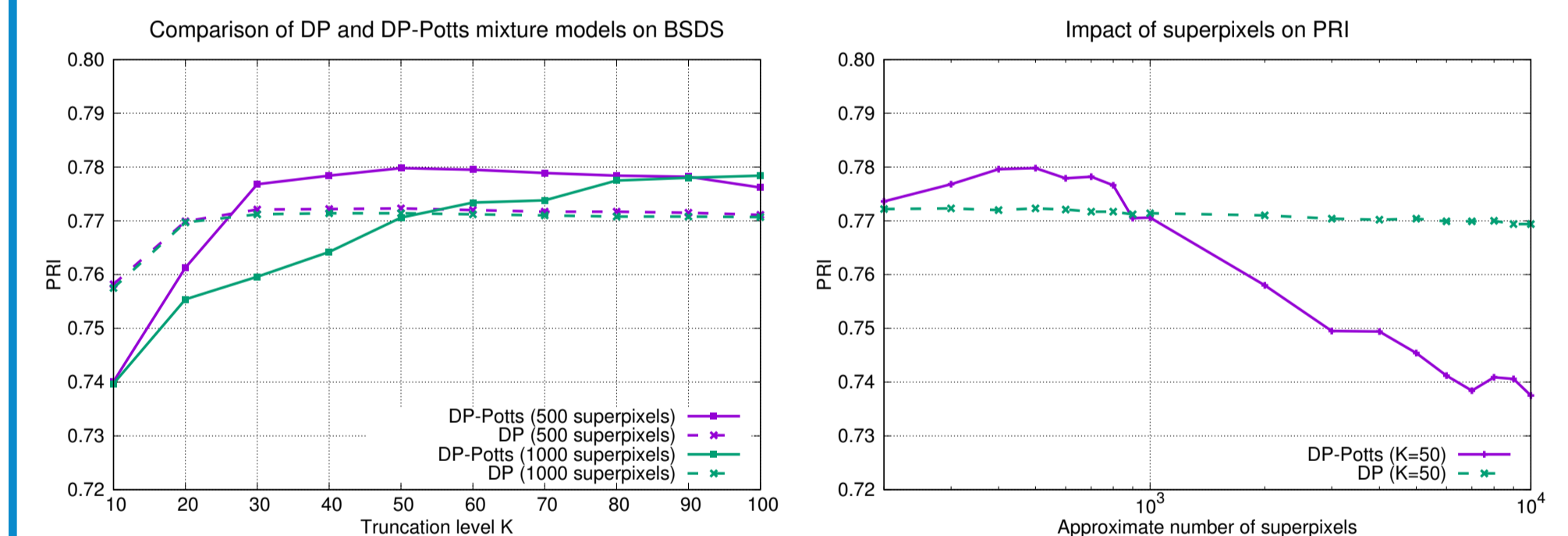
$$V(\mathbf{z}; \tau, \beta) = \sum_i \log \pi_{z_i}(\tau) + \beta \sum_{i \sim j} \delta_{z_i=z_j}$$

To find the optimal value of  $\beta$ , further approximations, such as the mean-field-like approximation [3] of  $q_{\mathbf{z}}$  and replacing  $\tau$  with a fixed  $\tilde{\tau} = \mathbb{E}_{q_{\tau}}[\tau]$ , are required.

## VI SOME EXPERIMENTS AND RESULTS



Experiments were performed using superpixels on a subset (154 images) of the Berkeley segmentation data set (BSDS) [4]. Regarding the performance evaluation, the probabilistic rand index (PRI) was computed under different conditions:



We also compared our best results ( $K = 50$  and about 500 superpixels) with those given in the literature:

PRI	Proposed models		Results given in [5]		
	DP	DP-Potts	iHMRF	MRF-PYP	Graph Cuts
Mean (%)	77.23	77.98	75.50	76.49	76.10
Median (%)	79.05	79.56	76.89	78.08	77.59

## VII CONCLUSIONS AND FUTURE WORK

A general **DP-Potts mixture model** and the associated **VB algorithm** were proposed. The model was successfully applied to image segmentation on different types of datasets. We also investigated the impact of  $\beta$  on the segmentation results and presented an **estimation procedure for  $\beta$** .

In the sequel, we plan to survey **how  $\beta$  affects the inferred number of components**. Other types of priors (**Pitman-Yor process**, **Gibbs-type priors**, etc.) and other variational approximations (truncation-free) will also be considered. On the other hand, it is crucial to study theoretical properties of BNP priors under **structural constraints (temporal or spatial)**. Other applications may also be possible, such as **discovery probability and community detection in graphs**.