



HAL
open science

Comparative characterization of surface sludge deposits from fourteen French Vertical Flow Constructed Wetlands sewage treatment plants using biological, chemical and thermal indices

M. Kania, Mathieu Gautier, Anne Imig, Philippe Michel, Rémy Gourdon

► To cite this version:

M. Kania, Mathieu Gautier, Anne Imig, Philippe Michel, Rémy Gourdon. Comparative characterization of surface sludge deposits from fourteen French Vertical Flow Constructed Wetlands sewage treatment plants using biological, chemical and thermal indices. *Science of the Total Environment*, 2019, 647, pp.464-473. <10.1016/j.scitotenv.2018.07.440>. <hal-01949002>

HAL Id: hal-01949002

<https://hal.science/hal-01949002v1>

Submitted on 22 Feb 2019

HAL is a multi-disciplinary open access archive for the deposit and dissemination of scientific research documents, whether they are published or not. The documents may come from teaching and research institutions in France or abroad, or from public or private research centers.

L'archive ouverte pluridisciplinaire HAL, est destinée au dépôt et à la diffusion de documents scientifiques de niveau recherche, publiés ou non, émanant des établissements d'enseignement et de recherche français ou étrangers, des laboratoires publics ou privés.



HAL Authorization

Comparative characterization of surface sludge deposits from fourteen French vertical flow constructed wetlands sewage treatment plants using biological, chemical and thermal indices

Manon KANIA, Mathieu GAUTIER, Anne IMIG, Philippe MICHEL, Rémy GOURDON

→ To cite this version:

Manon Kania, Mathieu Gautier, Anne Imig, Philippe Michel, Rémy Gourdon (2019). Comparative characterization of surface sludge deposits from fourteen French vertical flow constructed wetlands sewage treatment plants using biological, chemical and thermal indices. *Science of The Total Environment*, 647, 464–473.

<https://doi:10.1016/j.scitotenv.2018.07.440>

Please contact the corresponding author (mathieu.gautier@insa-lyon.fr) if you are interested by a copy of the article published in the journal.

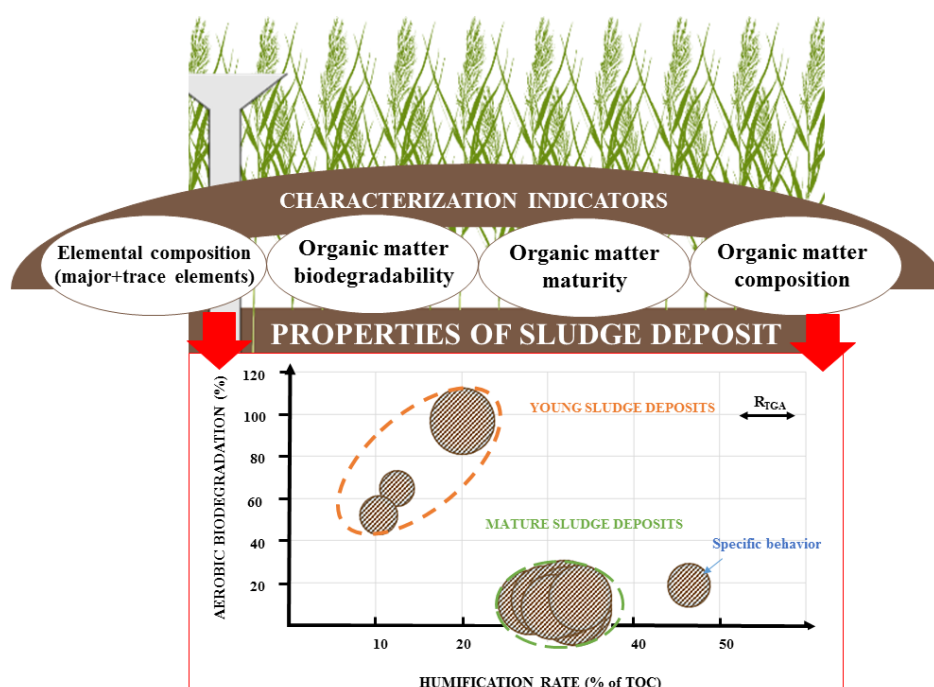
Comparative characterization of surface sludge deposits from fourteen French vertical flow constructed wetlands sewage treatment plants using biological, chemical and thermal indices

M. Kania ^{a,b}, M. Gautier ^{a,*}, A. Imig ^a, P. Michel ^b and R. Gourdon ^a

^a Univ Lyon, INSA Lyon, DEEP (Déchets Eaux Environnement Pollutions), EA 7429, 69621 Villeurbanne Cedex, France

^b SCIRPE, 5 Allée Alban Vistel, 69110 Sainte-Foy-Lès-Lyon, France

Graphical abstract



Highlights

- Particulate organic matter (POM) in sludge deposits (SD) exhibits specific properties.
- Young deposits (≤ 1 y) and mature de-positions (>3 y) identified as 2 distinct groups.
- Additional pretreatments affected young-age sludge deposits characteristics.
- State of maturation of POM in SD inter-mediate between peat and wet meadows

Abstract

Due to their design and mode of operation, French Vertical Flow Constructed Wetlands (VFCWs) accumulate suspended solids from the inflow wastewater in the form of a sludge layer at the surface of the first filter. In order to maintain the treatment performance over the long term, the characteristics of the sludge deposits and their evolution have to be well described. In this objective, a panel of sludge deposit samples taken from 14 French VFCW sewage treatment plants was investigated. Elemental composition and organic matter content, nature and reactivity were analyzed. Results clearly revealed two categories of sludge deposits, namely the “young-age plants” type (1 year of operation and less) and the “mature plants” type (3 years of operation and more). Sludge deposits from the “mature plants” exhibited same biological, physical and chemical properties. Their organic matter was globally less abundant, more humified and less biodegradable than in the young-age plants type. Their overall contents in trace metals were also higher, although in a limited manner. The effect of additional treatments, particularly FeCl_3 injection for phosphorus precipitation, was observable in the “young-age plants” group. Finally, the sludge deposits sampled from one particular plant with specific operating conditions were found to exhibit very different characteristics from those of either groups identified. This observation underlined the influence of local conditions on the typology of the sludge deposits.

Keywords

Sludge deposits; Constructed wetland; indices; Characterization; Organic matter; Ageing

*Corresponding author.

E-mail addresses: manon.kania@insa-lyon.fr (M. Kania), mathieu.gautier@insa-lyon.fr (M. Gautier), pmi@scirpe.fr (P. Michel), remy.gourdon@insa-lyon.fr (R. Gourdon).

1. Introduction

French Vertical Flow Constructed Wetlands (VFCWs) have become in the recent years in France the sewage treatment system most widely used in rural communities of ≤ 2000 Population Equivalent (Bellin, 2016). This rapid development may be explained by the high level of performance of these systems, their good social acceptability and landscape integration, their low energy requirements, easy operation, and low maintenance (Liu et al., 2015a; Semeraro et al., 2015; Wu et al., 2014).

The so-called “French VFCW system” comprises two stages of filters where the first stage is fed with unsettled raw wastewater. This design results in the formation of a sludge layer at the surface of the first filter which has mainly been considered until recently through its hydraulic aspects and its negative consequences with regards to the potential risk of clogging (Hua et al., 2018; Knowles et al., 2011; Nivala et al., 2012; Yang et al., 2018). Yet, the sludge layer may contribute positively to the treatment efficiency. For example, suspended solids removal, water retention and the biodegradation or retention of pollutants may be improved (Chazarenc & Merlin, 2005; Kim et al., 2013; Molle, 2014). On the other hand; the retention of most of feed organic matter within the sludge layer may limit the efficiency of subsequent denitrification (Lee et al., 2009; Van Oostrom & Russell, 1994). The effective roles of the sludge layer in the system may depend on its structural, compositional and reactional properties which are controlled by numerous factors, such as the composition of the influent wastewater, the operating conditions of the plant, or other local environmental factors (Fu et al., 2015). Although extensive work has already been published on similar issues in the fields of natural wetlands (Grasset et al., 2017; Rouwane et al., 2017), anthropic sediment (Badin, 2009; Huot, 2013), activated sludge (Alvarenga et al., 2015; Lachassagne, 2015), or sludge drying reed beds (SDRB) (Collard et al., 2017; Nielsen, 2011; Nielsen & Bruun, 2015; Nielsen & Larsen, 2016; Nielsen & Willoughby, 2005; Vincent et al., 2012), very few studies have focused on VFCWs’

surface sludge deposits (Bois et al., 2015; Chazarenc & Merlin, 2005; Kim et al., 2013; Kim et al., 2015). Molle (2014) and Perron et al. (2007) reported the influence of the VFCW plant design and operating conditions, such as organic and hydraulic loads or feed and rest periodicity. Kim et al. (2013), reported that although mainly organic, sludge deposits contained significant amounts of inorganic constituents originating from the local geological background or generated by possible operations of pretreatment of the influent such as phosphate precipitation by FeCl_3 addition. Kim et al. (2013) and Kania et al. (2018, 2018a) investigated the extent of organic matter evolution within the sludge deposits, such as mineralization. Finally, the authors of this study reported structural properties data of surface sludge deposits in a recent article (Kania et al., 2018b). In the specific context of sludge drying reed bed systems, few studies investigated the mineralization of the sludge and the organic matter stabilization (Masciandaro et al., 2017; Nielsen, 2005; Nielsen et al., 2014; Peruzzi et al., 2017; Peruzzi et al., 2013).

The objective of the present study was to contribute to a better description of the properties of sludge deposits using chemical, biological and thermochemical methods. Samples from fourteen VFCW sewage treatment plants in operation in France were analyzed to assess whether specific typologies would be observed and, if so, identify the dominant factors of influence, especially with regards to the particulate organic matter (POM).

2. Materials and methods

2.1. Sites of investigation

Fourteen French VFCW sewage treatment plants located in the south-eastern part of France, were selected for the study. The treatment plants were all equipped with a preliminary gridding stage set between 3 and 30 mm to remove coarse solids and debris. Four of them were also equipped with a sand trap (Table 1). Three typical types of VFCW process designs were represented in the selected plants:

- Process type I, usually referred to as the “classical French system”, where gridded, unsettled raw wastewater was percolated through two successive stages of vertical flow filters.
- Process type II, where an additional stage of aerobic biological trickling filter was used to treat gridded wastewater prior to the two successive stages of vertical flow filters,
- Process type III, comprising the same operations as in type II plus the introduction of a FeCl_3 solution into the outlet of the aerobic trickling filter in order to precipitate phosphorus prior to infiltration through the two successive stages of filters.

1

Table 1 Characteristics of the 14 French VFCW sewage treatment plants selected for the study.

VFCW plants	Process type	Process line stages					Number of years of operation at sampling date	Nominal capacity (Population Equivalent)	Average hydraulic load (m ³ /y)
		Gridding / sieving	Sand trap	Trickling filter	FeCl ₃ injection	Saturation of 1 st stage filter			
BAG1	<i>Classical French VFCW</i>	Yes	Yes	No	No	Unsaturated	11	1100	56940
BAG2			No				8	500	23725
SABAG			No				7	800	81030
VIL			No				7	350	11315
BAG3			No				4	290	6935
PRE			No				1	700	51830
RAM			No				0.5	350	13505
BAY	<i>AZOE</i> [®]	No	Yes	No	Partially saturated	7	1200	32850	
MIN		No				6	1000	25185	
NEU	<i>AZOE-N</i> [®]	Yes	Yes	Yes	Partially saturated	4	1600	75555	
VER	<i>AZOE-NP</i> [®]	No				11	1100	44165	
ORB		Yes				5	1500	126290	
COR		No				0.5	1000	51830	
MAT		<i>AZOE-P</i> [®]				Yes	5	1600	68620

2

3 These processes were further divided into two sub-categories according to the level of
4 saturation of the first-stage filter as shown in Table 1. Full drainage (unsaturated conditions)
5 was implemented to ensure good aeration in all process type I plants (“classical French system”)
6 and in some plants of process types II and III patented as AZOE[®] and AZOE-P[®] respectively.
7 Partially saturated conditions were implemented in the other plants of types II and III (patented
8 as AZOE-N[®] and AZOE-NP[®]) in the objective to allow aeration of the upper unsaturated zone
9 for nitrification, and anoxic conditions in the lower flooded zone for denitrification. More
10 details were given in a previous article (Kania et al., 2018b; Kim et al., 2014).

11 **2.2. Sampling and preparation of the sludge deposits samples**

12 Sludge deposits were sampled in winter time between January and March 2015 from
13 most wetlands, COR was sampled in November 2015 and RAM and PRE in February 2017 due
14 to their more recent dates of implementation of these wetlands. The annual load of dry solids
15 varied from one constructed wetland to another depending on its nominal design and its actual
16 operating conditions. It was estimated between 20 and 35 kg of dry solids per year and m² of
17 first stage filter cells. At the time of the field sampling operations, the sludge layer had not yet
18 been removed from any of the wetlands and it has not been removed since. The lower part of
19 the layer therefore contained deposits from the very beginning of the plant operation, whereas
20 the upper part contained fresh deposits. The entire depth of the sludge layer was sampled on
21 each site in order to obtain average samples representative of the mean composition of the
22 sludge deposits over the whole period of operation of the VFCW plants.

23 All samples were taken following the same protocol from the stage filters. A few
24 kilograms of deposits were taken by shoveling the entire depth of the sludge layer from 5 to 10
25 spots (depending on the filter size) at the surface of the cell under resting period for 0-1 week.
26 The sampling spots were randomly located at a distance of at least 5 m one from each other and
27 at least 2 m from the feed pipes. The samples taken from each spot were treated on site to extract

28 manually reeds rhizomes, and possible traces of gravels. They were then carefully homogenized
29 by quartering and mixing together with shovels. The representative samples from each plant
30 thereby constituted were then taken to the laboratory within a maximum of 4 h. They were
31 transported to the lab by car placed in a non-heated trunk at a maximal temperature of 10°C due
32 to the winter season. There, an aliquot fraction of each sample was used to determine water
33 content and the organic content of the dry solids. The rest was dried in thin layers at 35°C for
34 one day, finely grinded and stored at 4°C.

35 **2.3. Analytical methods**

36 *2.3.1. General analytical parameters*

37 Upon reception in the laboratory, a few grams of fresh samples from each plant were
38 dried in triplicates in an oven at 105°C until they reached a constant mass in order to determine
39 their humidity. Dry solids were then burnt in an oven at 550°C for four hours to determine their
40 organic matter contents. The rest of each sample was spread in thin layers of 1-2 cm on a
41 laboratory bench and air-dried for 1 day at 35°C, then grinded down to less than 1 mm to obtain
42 “dry powdered samples” which were stored at 4°C and used for all the other analyses.

43 Elemental analyses were done by alkaline fusion (LiBO_2) followed by acid digestion
44 (HNO_3) and subsequent analyses of the solutions by inductively coupled plasma atomic
45 emission spectrometry (ICP-AES) (IRIS Advantage ERS, Thermo Scientific). The following
46 elements were analyzed : silicon (Si), aluminum (Al), iron (Fe), manganese (Mn), magnesium
47 (Mg), calcium (Ca), sodium (Na), potassium (K), titanium (Ti) and phosphorus (P). Trace
48 metals chromium (Cr), copper (Cu), nickel (Ni), zinc (Zn), cadmium (Cd) and lead (Pb) were
49 analyzed using a Sciex Perkin Elmer ELAN 5000a. ICP-mass spectrometer.

50 Organic carbon contents were determined by burning at 1400°C 1g of dry powdered
51 samples, previously de-carbonated with acid and under high temperature, and by infrared

52 absorption with a Carbon - Sulfur EMIA 320V2 (HORIBA). Total nitrogen contents were
53 measured by burning 1g of powdered samples at 1050°C under a flow of helium and oxygen
54 mixture in microanalyzer designed and developed at UMR 5280 Institute of Analytical Sciences
55 which operates according to the Dumas method.

56 **2.3.2. Thermogravimetric and differential thermal analysis (TGA/DSC)**

57 Thermogravimetric analyses (TGA) were carried out using a METTLER TOLEDO
58 TGA analyzer whose temperature precision was $\pm 0.5^\circ\text{C}$ and microbalance sensitivity less than
59 $\pm 0.1\text{mg}$. A dry mass of $\pm 20\text{ mg}$ of each sample was heated from 35°C to 900°C at a rate of
60 $10^\circ\text{C}/\text{min}$, under a flow of air of 50 mL per minute. The analyses were done in duplicates and
61 blank experiments were carried under the same conditions as the assays but without any sample.
62 The mass loss due to thermal degradation of the sample was recorded as a function of the
63 temperature. Heat fluxes were also recorded during the process by differential scanning
64 calorimetry (DSC).

65 R_{TGA} index was calculated from experimental data as the ratio of the mass loss recorded
66 between 200 and 400°C (Δm_1) to that recorded between 400 and 600°C (Δm_2), as proposed
67 by several authors (Stevenson, 1982 ; Fernandez et al., 2012). In each given range of
68 temperature, the unit mass heat release, also called “energy density” E (in $\text{J}\cdot\text{mg}^{-1}$), was also
69 calculated from the ratio between the surface area of the corresponding peak in DSC profiles
70 over the mass loss recorded in the same range of temperatures (E_1 and E_2). The R_{DSC} index was
71 finally calculated as the ratio of E_2/E_1 (Achour, 2008).

72 **2.3.3. Determination of humification rate**

73 The contents in humic-like and fulvic-like substances (referred to as HULIS and FULIS,
74 respectively) were analyzed to evaluate the humification degree of the organic matter in the
75 sludge deposits (Albrecht, 2007). The protocol for the HULIS and FULIS extraction was

76 adapted from Serra-Wittling et al. (1996). HULIS and FULIS were extracted by suspending for
77 2 h under constant agitation 1 g of powdered samples in 50 mL of a 0.1 M sodium hydroxide
78 aqueous solution. The suspensions were then centrifuged at 10 000 g for 15 min and vacuum
79 filtered at 0.45 µm using Sartorius cellulose acetate filters. The solutions, containing HULIS
80 and FULIS fractions were analyzed for total organic carbon (TOC) using a Shimadzu TOC-L
81 analyzer, then acidified to pH 1.5 with 1 M sulfuric acid aqueous solution and left at rest
82 overnight at +4°C to allow precipitation of HULIS fraction. FULIS fraction was collected in
83 solution by centrifugation at 6000 g for 15 min followed by filtration at 0.45µm. The solution
84 was analyzed for TOC using the same protocol as for the HULIS + FULIS extracts.

85 The proportion of HULIS + FULIS in the organic matter was taken as an indicator of
86 the degree of humification of the sludge organic matter and calculated as follows:

$$87 \text{ Humification rate} = 100 \times \frac{[\text{HULIS}] + [\text{FULIS}]}{\text{TOC}} \quad (1)$$

88 **2.3.4. Biodegradation under aerobic conditions**

89 Respirometric assays were conducted to evaluate the biodegradability of the sludge
90 deposits considered here as an indicator of stability of their organic matter. A given mass of
91 each powdered sample, calculated to contain 75.5 mg of organic matter, was introduced into
92 500 mL BOD flasks containing 10 mL of a mineral medium made of an aqueous solution of
93 28.25 g.L⁻¹ KH₂PO₄ ; 146.08 g.L⁻¹ K₂HPO₄ ; 3.66 g.L⁻¹ CaCl₂ ; 28.64 g.L⁻¹ NH₄Cl ; 3.06 g.L⁻¹
94 MgSO₄, 0.7 g.L⁻¹ FeSO₄ and 0.4 g.L⁻¹ ZnSO₄ (Liu et al., 2015b). The flasks were then inoculated
95 with 10 mL of a seed suspension prepared from biological sludge obtained from a municipal
96 wastewater activated sludge treatment plant located in Villeurbanne (France) and cultivated in
97 the laboratory prior to the beginning of the assays. They were finally spiked with ca. 0.2 mL of
98 a 5 g.L⁻¹ allylthio-urea aqueous solution used as a nitrification inhibitor, hermetically closed by
99 manometric caps to monitor pressure variations, and incubated at 30±1°C in the dark. Carbon

100 dioxide formed from biodegradation was trapped by sodium hydroxide pellets placed in a
101 specific compartment in the headspace of the test flasks. The recorded pressure therefore
102 decreased proportionally to the oxygen consumed and was subsequently converted into BOD
103 values expressed in mg O₂ per g of sludge TOC.

104 Biodegradability was finally calculated according to eqn. (2) from the ratio between the
105 cumulated consumption of O₂ (g) over 14 days of incubation (BOD₁₄) and the theoretical
106 oxygen demand (ThBOD) of 2667 mg O₂ per g of TOC (corresponding to a consumption of 32
107 g O₂ for a complete bio-oxidation of 12 g C based on a stoichiometry of 1 mole of O₂ for 1 mole
108 of C assuming that carbon in the sludge organic constituents was at an average degree of
109 oxidation of zero).

$$110 \text{ Biodegradability (\%)} = \frac{\text{BOD}_{14} \text{ (gO}_2 \text{ per g TOC)}}{2.667} \times 100 \quad (2)$$

111 **3. Results and discussion**

112 **3.1. Organic content and elemental composition**

113 ***3.1.1. Organic content***

114 Table 2 shows the average contents in organic matter and organic carbon analyzed in
115 the surface deposits samples. Organic matter (OM) contents ranged between 50.3 and 86.2% of
116 total dry weight (% w/ w). Regardless of their wetland of origin, the surface deposits were
117 therefore in all cases mostly organic material.

Table 2 General composition of sludge deposits samples.

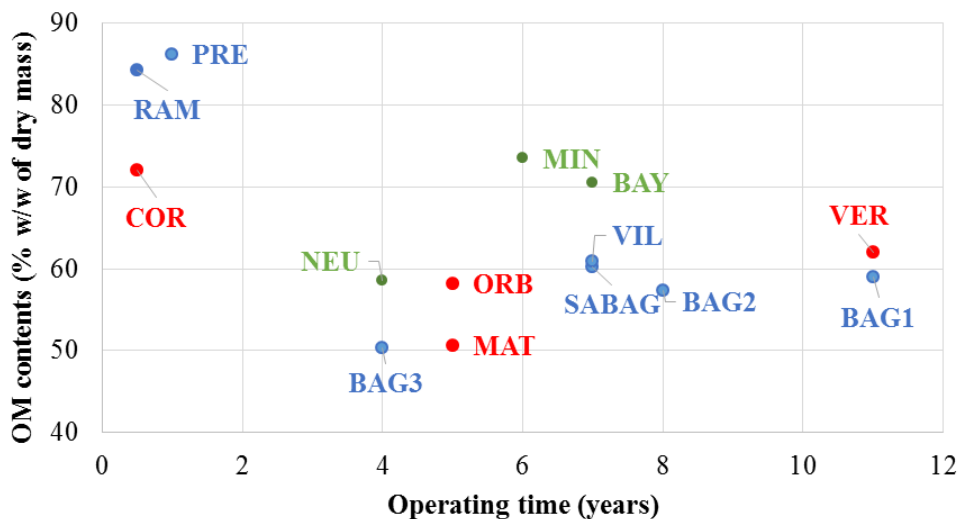
VFCW labels ^a	OM ^b	TOC ^c	Si ^d	Ca ^d	Al ^e	Fe ^d	Mg ^e	Na ^f	K ^d	Mn ^e	Ti ^e	P ^d	TN ^g	TOC/TN	Cr ^e	Cu ^d	Ni ^d	Zn ^e	Cd ^f	Pb ^d	∑metals _h
	% w/w of DM		% w/w of DM											mg.kg DM ⁻¹							
BAG1	59.0	24.7	7.7	2.6	2.1	1.0	0.3	0.2	0.5	0.02	0.2	1.2	4.0	6.2	49.8	338.0	23.2	615.6	1.0	43.7	1071
BAG2	57.4	24.2	13.3	2.9	2.0	0.9	0.3	0.2	0.7	0.01	0.2	0.8	3.3	7.2	41.4	363.8	21.7	810.2	1.2	37.2	1276
SABAG	60.3	21.0	11.6	2.6	1.8	1.4	0.3	0.2	0.6	0.04	0.2	1.1	3.6	5.8	46.3	1162.0	23.1	557.4	1.0	33.4	1823
VIL	60.9	22.7	10.5	2.4	2.4	1.2	0.3	0.1	0.5	0.01	0.3	1.2	3.4	6.7	46.5	425.2	18.0	430.0	0.6	31.9	952
BAG3	50.3	18.4	13.2	3.5	2.4	1.4	0.3	0.3	0.7	0.02	0.2	1.0	3.1	5.9	59.3	282.3	25.1	481.4	1.0	34.7	884
PRE	86.2	36.4	2.1	2.5	0.4	0.2	0.1	0.1	0.2	<D.L.	0.1	0.5	1.5	24.7	19.3	216.9	7.7	463.1	0.4	13.6	721
RAM	84.3	32.3	3.4	3.2	0.6	0.3	0.2	0.1	0.2	<D.L.	0.1	0.7	2.1	15.6	18.4	304.7	10.0	481.0	0.6	18.1	833
BAY	70.5	28.5	3.3	4.7	1.5	0.5	0.3	0.1	0.3	0.01	0.2	1.9	4.5	6.4	34.5	232.9	20.3	968.9	1.5	121.5	1380
MIN	73.5	28.2	5.0	3.5	1.3	0.6	0.4	0.2	0.4	0.02	0.3	1.4	4.8	5.9	51.9	195.9	30.3	731.6	0.9	32.2	1043
NEU	58.6	21.7	9.6	3.7	2.3	1.2	0.4	0.3	0.7	0.04	0.2	1.1	3.6	6.0	51.8	223.9	26.9	573.9	1.2	45.4	923
VER	62.0	23.0	5.7	3.8	2.1	3.5	0.3	0.1	0.4	0.02	0.2	2.0	3.8	6.1	57.4	622.5	30.5	1218.5	1.6	64.2	1995
ORB	58.2	22.7	7.3	3.8	2.0	3.5	0.3	0.1	0.5	0.03	0.2	1.6	3.6	6.2	74.0	379.6	36.7	952.9	1.3	48.9	1493
COR	72.0	24.7	2.8	4.6	0.8	5.2	0.3	0.2	0.5	0.02	0.2	2.5	4.1	5.9	51.4	691.4	21.0	908.8	1.0	37.2	1711
MAT	50.6	14.0	11.2	1.6	3.2	5.9	0.4	0.4	1.2	0.5	0.3	2.0	2.5	5.5	57.6	201.7	23.4	744.7	1.1	68.7	1097

119 OM: Organic Matter; DM: Dry Matter; DL = Detection Limit

120 ^a See Table 1121 ^b Analytical results from the replicates of each sample did not exceed $\pm 2.5\%$ 122 ^c Relative uncertainty of 1-2%123 ^d Relative uncertainty of 5%

- 124 ^e Relative uncertainty of 10%
125 ^f Relative uncertainty of 15%
126 ^g Relative uncertainty of 0.3%
127 ^h $\sum \text{metals} = [\text{Cr}] + [\text{Cu}] + [\text{Ni}] + [\text{Zn}] + [\text{Cd}] + [\text{Pb}]$.

128 Fig. 1 illustrates the plot of organic matter contents of the surface deposits vs. the
 129 number of years of operation of the VFCW sewage treatment plants of origin. The graph
 130 showed that deposits from young systems with newly established thin sludge layers of about 1-
 131 3 cm contained larger concentrations of organic matter than those from older systems of ≥ 3
 132 years with a sludge layer of about 10-25 cm thick. This observation suggested that hydrolysis
 133 and /or mineralization of POM progressively reduced the organic matter content of the deposits
 134 within the sludge layer. However, although COR, RAM and PRE samples were all taken from
 135 young plants (1 year and less), COR sample was less organic than those from RAM and PRE.
 136 Time was therefore not the only factor of influence. Other analytical results discussed below
 137 have to be considered to explain this observation.



138
 139 **Fig. 1.** Organic matter contents of the surface deposits versus operating time of their VFCW plants of
 140 origin. Blue dots: Classical French system with no additional treatment. Green dots: additional treatment
 141 on trickling filter only. Red dots: trickling filter and FeCl₃ addition.

142
 143 **3.1.2. Elemental compositions**

144 The contents in major elements were quite similar in all the samples, except for MAT
 145 which exhibited high Mg, Na, K and Mn concentrations (Table 2), probably due to atypical
 146 local conditions as discussed in the sections below. Phosphorus (P) contents in the sludge
 147 deposits from plants with FeCl₃ injection (2.0; 1.6; 2.5 and 2.0% w/w in VER, ORB, COR and

148 MAT, respectively), were two-fold higher than in the plants without any additional treatment
149 where P concentrations ranged between 0.5 and 1.2% w/w of dry matter. This result confirmed
150 the good efficiency of FeCl₃ injection to precipitate phosphorus. The samples from plants with
151 a trickling filter also revealed slightly higher P contents (1.2%; 1.9% and 1.5% in NEU, BAY
152 and MIN samples respectively) than those with no additional treatment at all. This observation
153 could be attributed to the assimilation of phosphorus within the biofilm in the trickling filter,
154 which after detachment would be subsequently retained within the surface sludge layer and
155 induce a relative increase in P contents (Andersson, 2009). Total Nitrogen (TN) contents ranged
156 between 1.5 and 4.8% w/w of dry mass in all the samples. These results were close to those
157 reported in sludges from lagoons sewage treatment plants, but lower than those found in
158 suspended solids from activated sludge systems (Vincent, 2011). COR sample exhibited a TN
159 concentration of 4.1% w/w of dry mass, which was about double of the concentrations measured
160 in the samples of similar age RAM and PRE (1.5 and 2.1% w/w of dry mass, respectively). This
161 observation may be explained by the interactions (complexation, coagulation, precipitation) of
162 soluble N species with FeCl₃ used in COR plant. Other authors (Boucher et al., 1999; Hamdani
163 et al., 2004; Poon & Chu, 1999) reported the effect of FeCl₃ on the removal of TN from dairy
164 effluents. This effect was observable here in young-age plants but not in older plants (Table 2),
165 showing that other ageing effects became predominant over the years of operation.

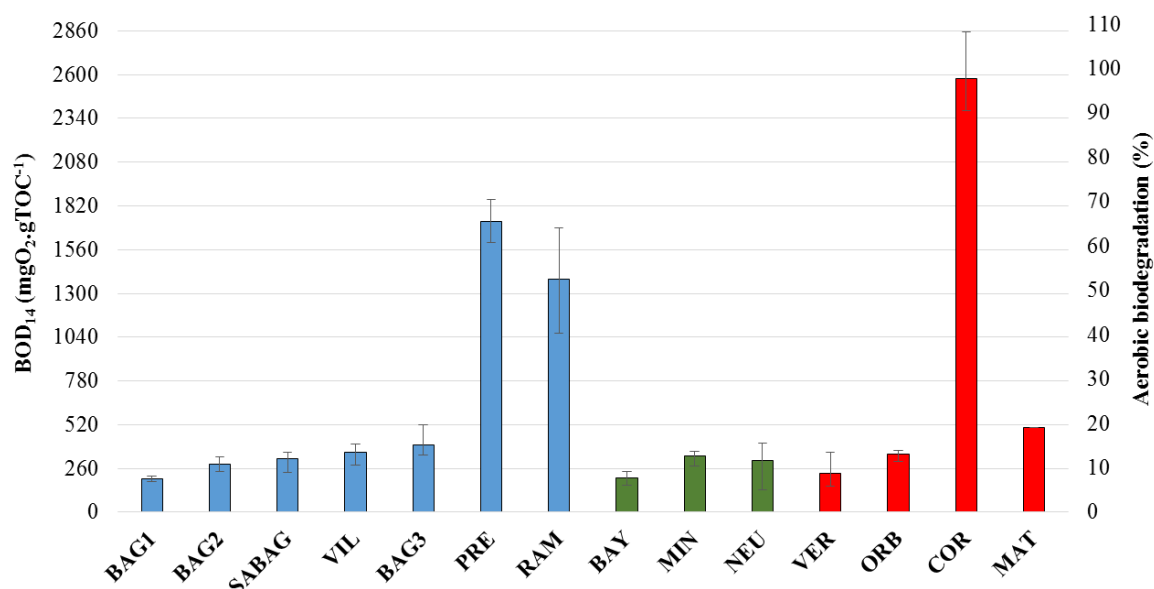
166 Table 2 showed that the contents in trace metals were in the same order of magnitude in
167 all the samples. The accumulation of trace metals and other micropollutants is a potential
168 environmental concern when considering land application or nutrients recovery from the
169 dredged sludge (Fang et al., 2016; Gautier et al., 2017; Kim et al., 2016; Peccia & Westerhoff,
170 2015; Peysson et al., 2013). Total contents in Cd, Cr, Ni, Pb, Cu and Zn in the sludge deposits
171 analyzed here ranged in most cases between ca. 0.9 and 1.6, 35 and 74, 18 and 37, 32 and 69,
172 196 and 425, 430 and 953 mg.kg DM⁻¹ respectively. These concentrations were in the ranges

173 classically reported in activated sludge, respectively 1-10 for Cd, 10-100 for Cr, Ni and Pb and
174 100-1000 mg.kg DM⁻¹ for Zn and Cu (Lachassagne, 2015). A few samples revealed however
175 relatively high contents in some elements. Sludge deposits from SABAG plant exhibited a high
176 copper concentration (1162 mg.kg DM⁻¹), samples from VER a high zinc concentration (1218.5
177 mg.kg DM⁻¹) and samples from BAY a high lead contents (121.5 mg.kg DM⁻¹). These
178 observations may be related to the specific nature of anthropic discharges (domestic, industrial
179 or both) to the sewage water in the water catchments of the respective constructed wetlands
180 (Chipasa, 2003; Ustun, 2009; Vriens et al., 2017). Table 2 showed the concentrations of trace
181 metals analyzed in the 14 sludge deposit samples. As an informative reference, these
182 concentrations may be compared to the upper limit concentrations of a series of trace metals
183 considered in French regulation for land application of sludge (decree N° 97-1133 of 8/01/1998),
184 expressed in mg of element per kg of DM: Cd and Hg 10 DM; Cr and Cu 1000, Ni 200; Pb 800;
185 Zn 3000; Cr+Cu+Ni+Zn 4000. It was observed that the concentrations increased in time from
186 around 780 mg.kg⁻¹ of DM in young plants RAM and PRE to ≥ 1200 in the older “classical”
187 VFCW plants, suggesting a progressive accumulation of trace metals in the sludge deposits
188 over the years of operation, which may be explained in part by their sorption onto POM and/or
189 mineral fractions of the sludge deposits. The implementation of additional treatment did not
190 induce observable differences of total metal concentration in the samples from mature plants.
191 The average concentrations were 1201 \pm 386 mg.kg DM⁻¹ in samples from classical VFCW (no
192 additional treatments), 1115 \pm 237 mg.kg DM⁻¹ in samples from AZOE[®] treatment plants, and
193 1529 \pm 450 mg.kg DM⁻¹ in AZOE-NP[®] treatment plants. Regarding sludge deposits from the
194 young plants, the effect of FeCl₃ addition (co-precipitation with and/or sorption onto flocculated
195 mineral and organic phases) may explain here again the observed difference between the
196 samples from COR (ca 1711 mg.kg DM⁻¹) and RAM and PRE (721 and 833 mg.kg DM⁻¹
197 respectively) as already discussed by El Samrani et al. (2008) and Fu & Wang (2011). The

198 situation in the sludge layer in the VFCW seems in many aspects comparable with the sludge
199 layer building up in SDRB systems. In sludges from reed bed systems, very similar contents
200 were indeed reported for TOC and TN (Masciandaro et al., 2017; Nielsen et al., 2014 ; Peruzzi
201 et al., 2013), and trace metals (Caicedo et al., 2015; Matamoros et al., 2012; Nielsen & Bruun,
202 2015).

203 **3.2. Biodegradability of sludge deposits' organic matter**

204 Fig. 2 shows the results of cumulated O₂ consumption measured over 14 days of
205 incubation at 30°C of the sludge deposits samples. It can be seen that the samples from the
206 mature plants exhibited respiration levels ranging between 200 and 500 mgO₂.TOC⁻¹ in 14 days
207 of incubation, which may be considered as low values according to the scale used for compost
208 (Wood et al., 2009) and with respect to the theoretical maximum of 2667 mg O₂ per g of TOC.
209 These results therefore revealed the poor biodegradability and/or bioavailability of the organic
210 matter in these samples. The samples from the youngest three plants PRE, RAM and COR
211 exhibited drastically higher respiration levels (1729, 1387 and 2577 mg O₂ per g of TOC
212 respectively), indicating that their organic matter was readily biodegradable and bioavailable in
213 the conditions of the assays. Vincent (2011) reported that fresh organic matter from raw
214 wastewater was responsible for the major part of O₂ consumption in “classical French” VFCWs.



215
 216 **Fig. 2.** Aerobic biodegradation measured over 14 days of incubation at 30°C on the surface sludge
 217 deposits sampled from French VFCW sewage treatment plants of different types. Classical system with
 218 no additional treatment (blue bars); additional treatment on trickling filter only (green); trickling filter
 219 and FeCl₃ addition (red).

220 Results obtained from the analysis of sludge deposits from VFCW sewage treatment
 221 plants of increasing ages therefore showed that both the organic contents of the sludge deposits
 222 and the biodegradability of their organic matter decreased over time, suggesting the occurrence
 223 of both mineralization and humification processes. Similar phenomena were reported in other
 224 environmental media (Albrecht, 2007; Francou, 2003).

225 3.3. Indicators of maturation of particulate organic matter

226 3.3.1. TOC/TN ratio

227 TOC/TN ratio is a parameter classically used to monitor the progress of biodegradation
 228 in the processes of organic waste composting (Iglesias Jiménez & Perez Garcia, 1989; Zahra El
 229 Ouaqoudi et al., 2015). The ratio normally decreases over time since biodegradation releases
 230 carbon (in the form of CO₂) whereas nitrogen remains within the waste material during
 231 composting operations. Compost is considered mature when the ratio falls below 15 (Zahra El
 232 Ouaqoudi et al., 2015). Grimaud (1996) also reported that secondary sludge from conventional

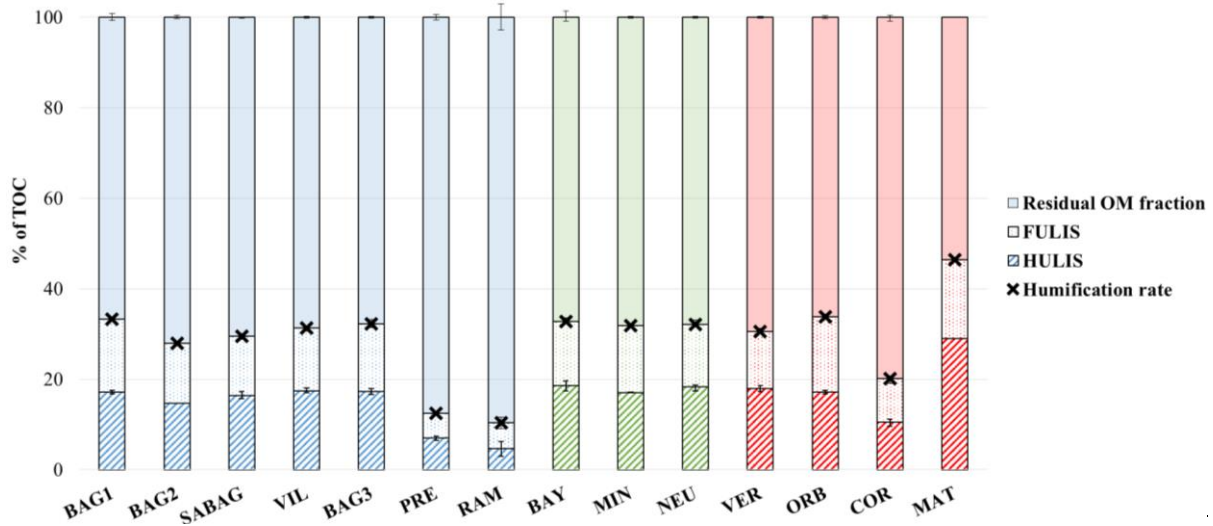
233 domestic wastewater treatment would exhibit a TOC/TN ratio between 6 and 12, whereas
234 primary sludge would be above 12.

235 Based on these studies, the ratio was tentatively used here as an indicator of the
236 evolution of organic matter in the sludge deposits. Table 2 showed that low values between 5.5
237 and 7.2 were measured in sludge deposits taken from VFCW plants of three years and more,
238 whereas samples from the young plants RAM and PRE exhibited much higher values of 24.7
239 and 15.6 respectively. COR sample however, although also originating from a young plant,
240 revealed a low TOC/TN value of 5.9. The ratio TOC/TN ratio was however considered non-
241 relevant as an indicator of POM evolution in VFCW. As a matter of fact, unlike composting
242 where N is not exported from waste material, the conditions of evolution of surface sludge
243 deposits in VFCW allowed both the release of N in the form of soluble and leachable species
244 and/or the accumulation of N species from wastewater via complexation and/or adsorption.
245 Other authors (Brewer & Sullivan, 2003; Huang et al., 2006) also reported that TOC/TN ratio
246 was not sufficient or not always relevant to discriminate the level of maturity of OM. Other
247 indicators widely used in published studies, such as the humification rate, were therefore
248 considered.

249 **3.3.2. Humification rate**

250 The contents in HULIS and FULIS fractions analyzed in the different samples,
251 expressed as % w/w of organic carbon, and the calculated humification rate are shown in Fig.
252 3. The humification rate of almost all the samples from mature plants were found to be relatively
253 high and very similar, ranging from 27.9 ± 0.5 to $33.8 \pm 0.9\%$ w/w of sludge TOC. This indicator
254 was therefore consistent with the results discussed above relative to the biostability of their
255 organic matter. Masciandaro et al. (2017) obtained very similar values (humification rate
256 between 23.7 and 30.4%) in sludge treatment reed bed systems and concluded to the
257 effectiveness in stabilizing sludge organic matter. One sample however, also collected from a

258 mature plant, MAT, exhibited on this indicator a much higher value than all other samples, as
 259 high as ca. $46.4 \pm 2.8\%$, suggesting that the organic matter in this sample was particularly
 260 humified, although it did not exhibit the smallest biodegradability in Fig. 2. The particular
 261 properties of this sample are discussed below.



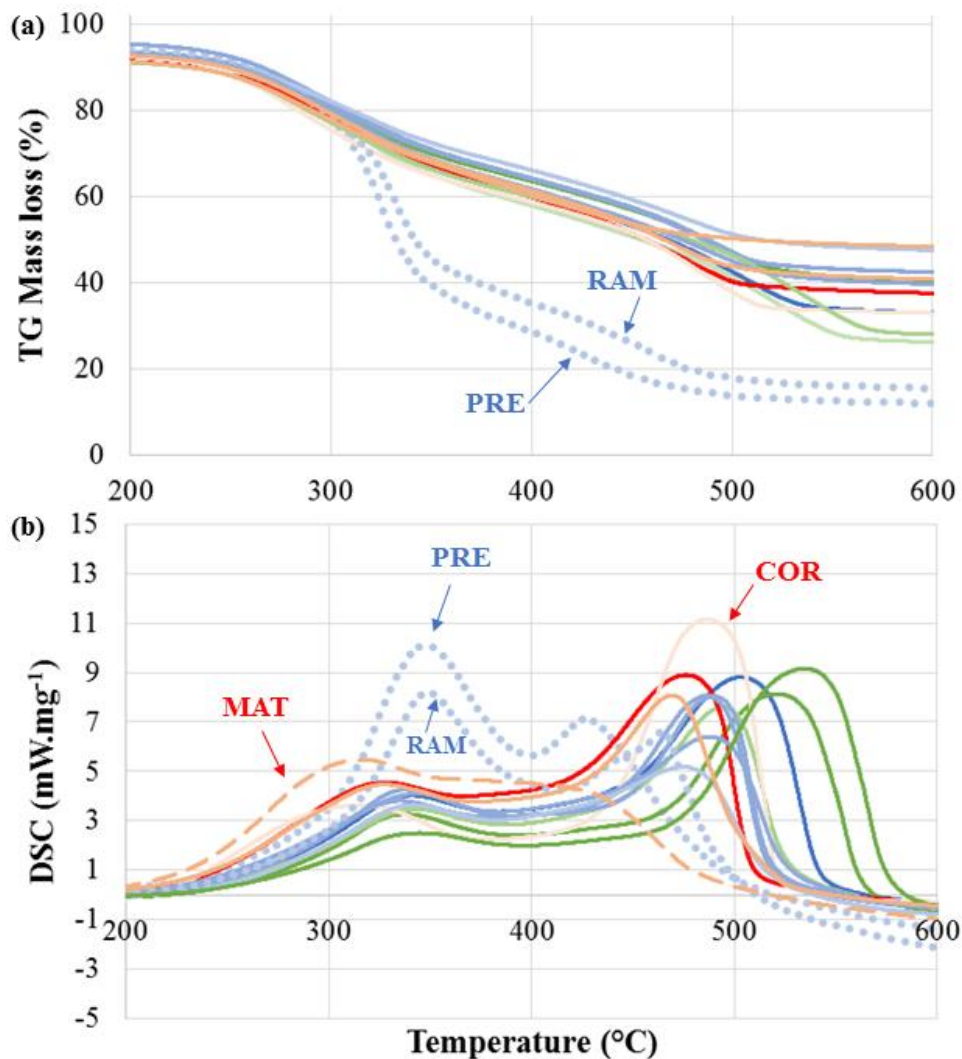
262 **Fig. 3.** Distribution of organic carbon in sludge deposits (SD) organic fractions, and humification rate
 263 measured in the 14 VFCWs sludge deposits. Classical system with no additional treatment (blue);
 264 additional treatment on trickling filter only (green); trickling filter and FeCl_3 addition (red).
 265

266 Samples from the young plants RAM and PRE showed lower values of humification
 267 rates, 12.5 ± 0.6 and $10.3 \pm 2.9\%$ respectively, which were relatively close to level reported for
 268 activated sludge (16.5% in Riffaldi (1982) and 10.9% in Li et al. (2011)). COR sample however
 269 exhibited a humification rate of ca $20.1 \pm 1.6\%$ w/w of TOC which was comprised between the
 270 levels measured in the other two young plants RAM and PRE and in mature plants. This
 271 observation was attributed to the transformation of the organic matter through the trickling filter
 272 and the detachment of biofilm fragments which may favor the formation of humic-like
 273 substances as reported by other authors (Maeng et al., 2015; Zhao et al., 2013).

274 3.4. Thermal analyses

275 TGA and DSC profiles obtained from thermal analyses of the sludge deposits samples
 276 are shown in Fig. 4 in the range of temperatures between 200° and 600°C known to induce

277 thermal degradation of organic compounds of natural origins (Torres-Climent et al., 2015). The
278 first part of the graphs, from 200°C to 400°C, was considered to correspond to the degradation
279 of relatively labile organic compounds, such as hemicelluloses, cellulose and some aliphatic
280 compounds (Chen et al., 2015; Gomez et al., 2007; Som et al., 2009; Zahra El Ouaqoudi et al.,
281 2015). The second part between 400 and 600°C was considered associated to more complex
282 and stable organic compounds such as lignin and other high molecular weight poly-aromatic
283 structures such as humic and fulvic substances (Chen et al., 2015; Cuypers et al., 2002; Melis
284 & Castaldi, 2004; Zahra El Ouaqoudi et al., 2015).



285

286 **Fig. 4.** Mass loss (a) and differential scanning calorimetry (b) profiles recorded from surface sludge
287 deposits from 14 French VFCW sewage treatment plants. Classical system with no additional treatment
288 (blue); additional treatment on trickling filter only (green); trickling filter and FeCl₃ addition (red).

289

290 For all samples, except RAM and PRE, TGA profiles showed that around 1/4 to 1/3 of
291 the initial dry mass (26.2 to 35.1% w/w of dry mass) was degraded between 200 and 400°C.
292 The mass losses between 400 and 600°C were in the same order of magnitude as from 200 to
293 400°C, ranging between 19.8 and 32.4% w/w of dry mass. RAM and PRE samples, taken from
294 the youngest VFCW plants, exhibited different patterns, with about 2/3 of initial dry mass
295 degraded between 200 and 400°C (66.4 and 66.1% w/w of dry mass respectively), and only
296 around 16% w/w of initial dry mass degraded between 400 and 600°C. Similar results were
297 reported for activated sludge by Magdziarz et al. (2013), with around 50% degradation of initial
298 dry mass between 200 and 400°C and 20% w/w of dry mass above 400°C. MAT sample
299 exhibited an atypical profile. Although between 200 and 400°C the mass loss was 32.0% w/w
300 of dry mass as in almost all samples, above 400°C the mass loss was the lowest of all samples
301 (11.1%).

302 The thermal degradation processes were logically exothermic since the analyses were
303 made in the presence of air (DSC profiles in Fig. 4). The heat released per unit mass of organic
304 matter oxidized in the assays was related to the energy of inter-atomic bounds and the degree
305 of oxidation of carbon in the organic constituents. It can be observed that the ratio E_1 between
306 200 and 400°C was much smaller than E_2 between 400 and 600°C (Table 3). The thermal
307 degradation was therefore much less exothermic per unit mass of organic constituents below
308 400°C than above 400°C. It was therefore concluded that the POM constituents degraded below
309 400°C were composed of molecules such as carbohydrates with relatively weak inter-atomic
310 bounds such as C–O, C–C and C–N (activation energy of 350–412 kJ.mol⁻¹) (Leinweber &
311 Schulten, 1992), and a relatively high degree of oxidation of carbon indicative of the
312 oxygenation index of the molecules (Barré et al., 2016; Soucémarianadin et al., 2018). The
313 organic constituents degraded above 400°C were considered to contain more C=C bounds of
314 higher energy (activation energy of 520-840 kJ.mol⁻¹) such as in humic-like substances, lignin

315 and lignocellulosic complexes (Magdziarz & Wilk, 2013), with carbon at a lower degree of
 316 oxidation, such as in (poly)-aromatic compounds (Leinweber & Schulten, 1992).

317 **Table 3** R_{TGA} , E_1 , E_2 and R_{DSC} values for 14 VFCW sludge deposits.

	R_{TGA}	E_1	E_2	R_{DSC}
		J.mg ⁻¹		
BAG1	0.95	8.6	20.7	2.4
BAG2	0.75	10.5	16.7	1.6
SABAG	0.83	9.2	15.4	1.7
VIL	0.77	8.9	19.1	.2
BAG3	0.76	10.2	21.2	2.1
PRE	0.24	8.9	24.1	2.9
RAM	0.28	7.9	24.6	3.2
BAY	0.92	6.6	16.3	2.5
MIN	1.05	6.0	17.3	2.4
NEU	0.85	8.0	17.7	2.2
VER	0.76	11.7	22.0	1.9
ORB	0.76	9.5	15.6	1.7
COR	0.79	8.5	18.7	2.2
MAT	0.35	13.6	18.7	1.4

318
 319 The thermal indices R_{TGA} and R_{DSC} were calculated and the results given in Table 3. For
 320 all samples except those from the youngest plants PRE and RAM, the R_{TGA} index was between
 321 0.8 and 1.1, indicating the presence of relatively stable organic constituents. For comparison,
 322 compost is considered mature for an R_{TGA} index above 0.8 (Som et al., 2009; Zahra El Ouaquoudi
 323 et al., 2015). R_{TGA} indexes of PRE and RAM samples were 0.2 and 0.3 respectively, confirming
 324 the previous discussions related to the predominance of labile organic compounds in these
 325 samples and the lower humification rate. R_{DSC} values were found between 1.6 and 3.2. Samples
 326 from the young plants RAM and PRE showed a higher index than those from the mature plants,
 327 confirming their lower stability (Achour, 2008).

328 COR sample exhibited again a particular profile, with R_{TGA} and R_{DSC} indexes closer to
 329 the group of mature plants than young plants. These results therefore confirmed the effects of
 330 the additional treatments, notably the trickling filter, on the characteristics of sludge deposits in
 331 young-age VFCW plants.

332 Finally, the TGA/DSC analysis allowed to highlight the particular behavior of MAT
 333 sample which did not feature a clear bimodal pattern but showed instead a peak around 320°C
 334 followed by a shoulder at 445°C. The particularities of MAT sample are further discussed below.

335 3.5. Multi-parameter cross-analysis of sludge deposits characteristics

336 3.5.1. Inter-comparison of the 14 sludge deposits

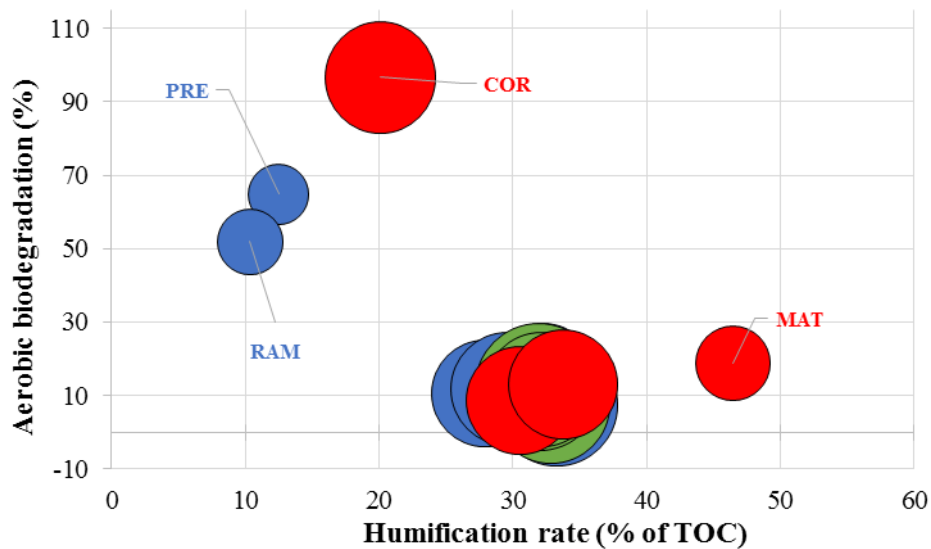
337 A correlation analysis was conducted on the different parameters of OM maturity and
 338 stability used in this study. Results gathered in Table 4 showed that OM content was relatively
 339 correlated with aerobic biodegradation and R_{DSC} , and anti-correlated with the humification rate.
 340 A high organic content was typical of young-age VFCW plants, where fresh organic matter was
 341 readily biodegradable and poorly humified. R_{DSC} index was anti-correlated with the
 342 humification rate and R_{TGA} was not significantly correlated to any other indexes.

343 **Table 4** Correlation coefficients (and P-value) between the parameters of biological, chemical and
 344 thermal characterization. Correlation coefficients shown in bold were considered statistically significant,
 345 with $P < 0.05$.

	OM	Humification rate	Aerobic biodegradation	R_{TGA}	R_{DSC}
OM	1	-0.834 (2.10⁻⁴)	0.623 (0.02)	-0.363	0.828 (3.10⁻⁴)
Humification rate		1	-0.702 (0.01)	0.427	-0.750 (2.10⁻³)
Aerobic biodegradation			1	-0.467	0.436
R_{TGA}				1	-0.253
R_{DSC}					1

346 To allow a relevant and discriminant graphical representation of the different SD
 347 samples with respect to their characteristics, the most discriminant parameter within each type
 348 of analyses was selected (namely biological, thermochemical, and chemical analyses). Based
 349 on the results shown in the previous sections, biodegradability and humification were selected
 350 as the biological and chemical parameters. Based on the statistical correlation assessment, R_{TGA}
 351 index was selected as the thermochemical parameter because it did not show significant
 352

353 correlations with the first two parameters according to Table 4, and was therefore considered
354 to provide independent additional information. The corresponding 3-D representation shown in
355 Fig. 5 clearly revealed distinct typologies of samples. A first group was identified with the
356 samples from the young-age VFCW plants RAM, PRE and COR. COR sample was positioned
357 slightly apart from RAM and PRE samples, underlining the influence of the additional
358 treatments on the characteristics of the sludge deposits within the young-age of the VFCW
359 plants. A second group was clearly formed with the samples from the mature plants. This group
360 was very homogeneous, revealing the very strong similarities in the characteristics of the sludge
361 deposits of the VFCW plants of three years of operation and more, regardless of the
362 implementation or not of additional treatments and other local conditions. Sludge samples from
363 mature VFCW plants exhibited a humification rate between 20 and 40%, an OM biodegradation
364 rate between 0 and 35%, and a R_{TGA} between 0.75 and 1. Finally, MAT sample was excluded
365 from both previous groups in the graphical representation of Fig. 5. Its overall characteristics
366 were therefore distinct from either groups of young-age and mature VFCW plants. MAT plant
367 was actually an atypical VFCW plant as compared to the others. For example, a predominance
368 of baby's wipes was observed at the surface of the first filter when the sludge deposits were
369 sampled. These wipes are made of about 60% polyester and 40% cellulose for most of them
370 and affect the composition of the sludge deposits. Fig. 5 therefore allowed to clearly identify a
371 third group of samples whose characteristics revealed a particular situation.



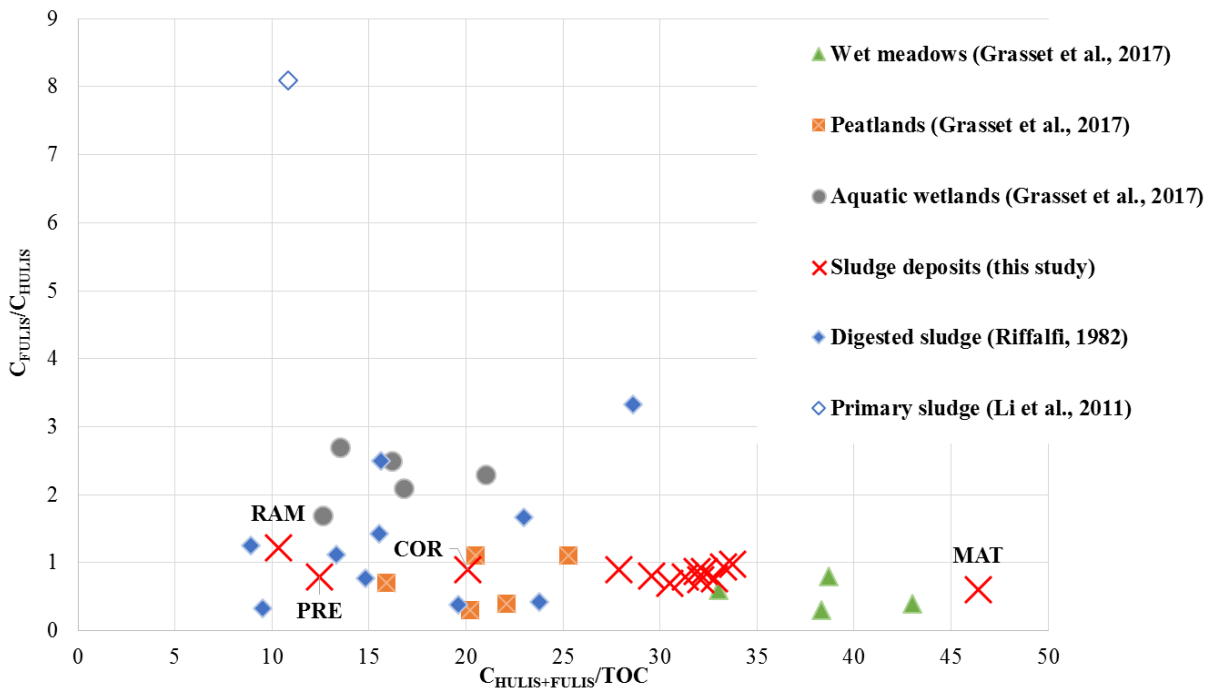
372

373 **Fig. 5.** Differentiation of sludge samples according to their indices related to the stability and maturity
 374 of the OM. Each sample is represented with a circle whose center is positioned according to the
 375 biodegradation rate and humification rate of the samples, and diameter is proportional to their R_{TGA}
 376 indices. Classical system with no additional treatment (blue); additional treatment on trickling filter only
 377 (green); trickling filter and $FeCl_3$ addition (red).

378 **3.5.2. Comparison to other samples at different levels of POM evolution**

379 Although some debates still remain on the subject, it is usually considered in the
 380 literature that ageing of natural particulate organic matter (POM) occurs via (i) the hydrolysis
 381 and mineralization of at least part of the most readily biodegradable constituents and (ii) the
 382 rearrangement of the remaining constituents into complex supra-structures usually called
 383 humus and usually considered as made of humic-like and fulvic-like substances. These
 384 phenomena are considered to increase (i) the proportion of HULIS+FULIS within the
 385 particulate organic matter and (ii) the proportion of HULIS vs. FULVIC within humus fraction.
 386 To assess the extents to which these processes occurred in the sludge deposits, Fig. 6 illustrates
 387 the plot of the ratio FULIS concentration/HULIS concentration of the samples as a function of
 388 the overall proportion of HULIS+FULIS within the total organic carbon of the samples. Data
 389 reported by Grasset et al. (2017) for different types of samples from natural systems were
 390 included in Fig. 6, along with other data calculated for activated sludges using the results of
 391 other studies (Li et al., 2011; Riffaldi, 1982). Fig. 6 illustrated the maturation pattern of natural
 392 organic matter from the early stages of evolution (fresh OM) in the top left part to the mature

393 state in the bottom right of the graph. The VFCW sludge deposits samples appeared as two
 394 major groups in Fig. 6. The samples from young VFCW plants (RAM, PRE and to a lesser
 395 extent COR) constituted a first group situated at an earlier stage of maturation from the second
 396 group made of the samples from the mature VFCW plants. COR sample was actually positioned
 397 between the young and mature groups, revealing the effects of the additional treatments
 398 discussed previously.



399
 400 **Fig. 6.** C_{FULIS}/C_{HULIS} against $C_{HULIS+FULIS}/TOC$ for natural wetlands (aquatic wetlands, peatlands and wet
 401 meadows), activated sludges and the 14 sludge deposits of this study.

402 Altogether, the spots showing the VFCW sludge deposits exhibited a specific state of
 403 evolution of the organic matter as compared to the other samples. Their position in the graph
 404 revealed a specific typology of samples, despite the differences existing amongst them. Most
 405 sludge deposits samples were positioned between the spot of digested sludge samples and
 406 peatlands and the spot of wet meadows. On the contrary, RAM, PRE and COR samples were
 407 positioned close to the area of peatlands and digested sludge samples.

408 **4. Conclusions**

409 Biological, chemical and thermochemical methods were applied to characterize surface
410 sludge deposits sampled from 14 French VFCW sewage treatment plants. Results clearly
411 revealed the existences of two groups of samples. The dominant factor of distinction between
412 the two groups was the age of the VFCW plant of origin. The first group corresponded to sludge
413 deposits taken from VFCW plants which were still in their first year of operation at the time the
414 samples were collected. These samples exhibited a high content of organic matter of high
415 biodegradability, high thermal lability, and low humification. Although the number of samples
416 in this category (3) was low to permit a straightforward generalization, it was observed that the
417 implementation of additional treatments in one of the three VFCW plants of this group modified
418 the characteristics of its sludge deposits in terms of humification rate and thermal behavior.
419 This observation showed that the presence of additional treatments modified the characteristics
420 of the sludge deposits into a signature close to that of samples from mature systems. The second
421 group gathered samples from 10 distinct French VFCW plants in a remarkably homogenous
422 manner. The plants of origin were three years of age or more. Their sludge deposits were
423 characterized by a lower organic content, lower biodegradability and thermal lability, and
424 higher humification than those of the first group. This common set of properties was favorable
425 to a relative accumulation of trace metals, which were analyzed at higher concentrations in this
426 group of samples. However, the concentrations measured were found compatible with a land
427 application practice should the sludge have to be dredged out from the filters for maintenance.
428 One last sample, although originating from a mature VFCW plant, revealed quite different
429 properties as compared to the other ten samples of the group. This observation could not be
430 explained by the implementation of additional treatments. Rather, it revealed that the sample
431 was identified as “atypical”, suggesting a particular situation in the VFCW plant of origin.

432 This study therefore showed that the organic matter captured within the surface sludge
433 layer in French VFCW sewage treatment plants was submitted to a relatively rapid evolution

434 process over the very first year of operation of the plants. After one to three years of operation,
435 a certain equilibrium was established, resulting from the balance between the flow of fresh
436 POM continuously brought to the surface and the evolution of the rest of the deposits within
437 the depth of the layer. This equilibrium state was found to be remarkably similar in all the plants
438 of 3 years and more, regardless of the implementation of additional treatments, local conditions,
439 and time. Surface sludge deposits therefore appeared as integrative tracers of the evolution of
440 the system.

441 **Acknowledgments**

442 The authors would like to thank the technicians of DEEP laboratory Richard Poncet and
443 Hervé Perier-Camby for their contributions, the SARM (Service d'Analyse des Roches et des
444 Minéraux – CNRS – CRPG) and the ISA (Institut des Sciences Analytiques) for the elementary
445 analyses. They are grateful to the reviewers for their contribution to the improvement of this
446 manuscript, but also to SCIRPE and CIFRE (Conventions Industrielles de Formation pour la
447 REcherche) for funding this research project.

448 **References**

- 449 Achour, F. 2008. PhD Thesis. Caractérisation de la Matière Organique dans les Ordures
450 Ménagères - Recherche d'Indicateurs de Stabilité (Characterization of Organic Matter in
451 Household Rubbish - Search for Stability Indicators). in: Industrial and Urban Environmental
452 Sciences, The National Institute of Applied Sciences of Lyon. Lyon, France, pp. 173.
- 453 Albrecht, R. 2007. PhD Thesis. Co-Compostage de Boues de station d'épuration et de Déchets
454 Verts (Co-Compostage of sludge from wastewater treatment plant and waste Green). in:
455 Biosciences of Environment, University of Paul Cezanne, Aix-Marseille III. Marseille, France,
456 pp. 189.
- 457 Alvarenga, P., Mourinha, C., Farto, M., Santos, T., Palma, P., Sengo, J., Morais, M.C., Cunha-
458 Queda, C. 2015. Sewage sludge, compost and other representative organic wastes as
459 agricultural soil amendments: Benefits versus limiting factors. *Waste management*, 40, 44-52.
- 460 Andersson, S. 2009. PhD Thesis. Characterization of bacterial biofilms for wastewater
461 treatment. in: School of Biotechnology, Royal Institute of Technology Stockholm, Sweden, pp.
462 63.
- 463 Badin, A.-L. 2009. PhD Thesis. Répartition et influence de la matière organique et des
464 microorganismes sur l'agrégation et le relargage de polluants dans des sédiments (Distribution
465 and influence of organic matter and microorganisms on the aggregation and release of
466 pollutants in sediments). in: Industrial and Urban Environmental Sciences, National Institute of
467 Applied Sciences of Lyon. Lyon, France, pp. 238.
- 468 Barré, P., Plante, A.F., Cécillon, L., Lutfalla, S., Baudin, F., Bernard, S., Christensen, B.T.,
469 Eglin, T., Fernandez, J.M., Houot, S., Kätterer, K., Le Guillou, C., Macdonald, A., van Oort,

- 470 F., Chenu, C. 2016. The energetic and chemical signatures of persistent soil organic matter
471 *Biogeochemistry*, 130, 1–12.
- 472 Bellin, I. 2016. L'épuration végétalisée s'ouvre à de nouveaux marchés. L'eau, l'industrie, les
473 nuisances, 390, 67-76.
- 474 Bois, P., Laurent, J., Nuel, M., Wanko, A. 2015. Indicateurs de Colmatage de FPR à EV. Etude
475 comparative de 4 stations de traitement après 10 ans de fonctionnement. *TSM Ingénierie*
476 *écologique*, 9, 43-55.
- 477 Boucher, V., Revel, J.C., Guiesse, M., Kaemmerer, M., Bailly, J.R. 1999. *Water, Air, and Soil*
478 *Pollution*, 112(3/4), 229-239.
- 479 Brewer, L.J., Sullivan, D.M. 2003. Maturity and Stability Evaluation of Composted Yard
480 Trimmings. *Compost Science & Utilization*, 11(2), 96-112.
- 481 Caicedo, P.V., Rahman, K.Z., Kusch, P., Blumberg, M., Paschke, A., Janzen, W., Schüürmann,
482 G. 2015. Comparison of heavy metal content in two sludge drying reed beds of different age.
483 *Ecological Engineering*, 74, 48-55.
- 484 Chazarenc, F., Merlin, G. 2005. Influence of surface layer on hydrology and biology of gravel
485 bed vertical flow constructed wetlands. *Water science and technology*, 15(n°9), 91-97.
- 486 Chen, J., Mu, L., Cai, J., Yin, H., Song, X., Li, A. 2015. Thermal characteristics and kinetics of
487 refining and chemicals wastewater, lignite and their blends during combustion. *Energy*
488 *Conversion and Management*, 100, 201-211.
- 489 Chipasa, K.B. 2003. Accumulation and fate of selected heavy metals in a biological wastewater
490 treatment system. *Waste management*, 23(2), 135-143.
- 491 Collard, M., Teychene, B., Lemee, L. 2017. Comparison of three different wastewater sludge
492 and their respective drying processes: Solar, thermal and reed beds - Impact on organic matter
493 characteristics. *Journal of environmental management*, 203(Pt 2), 760-767.
- 494 Cuypers, C., Grotenhuis, T., Nierop, K.G.J., Maneiro Franco, E., De Jager, A., Rulkens, W.
495 2002. Amorphous and condensed organic matter domains: the effect of persulfate oxidation on
496 the composition of soil/sediment organic matter. *Chemosphere*, 48, 919-931.
- 497 El Samrani, A.G., Lartiges, B.S., Villieras, F. 2008. Chemical coagulation of combined sewer
498 overflow: heavy metal removal and treatment optimization. *Water research*, 42(4-5), 951-60.
- 499 Fang, W., Wei, Y., Liu, J. 2016. Comparative characterization of sewage sludge compost and
500 soil: Heavy metal leaching characteristics. *Journal of hazardous materials*, 310, 1-10.
- 501 Fernandez, J.M., Plaza, C., Polo, A., Plante, A.F. 2012. Use of thermal analysis techniques (TG-
502 DSC) for the characterization of diverse organic municipal waste streams to predict biological
503 stability prior to land application. *Waste management*, 32(1), 158-64.
- 504 Francou, C. 2003. PhD Thesis. Stabilisation de la matière organique au cours du compostage
505 de déchets urbains (Stabilization of organic matter in the urban waste composting). in:
506 *Agricultural Sciences, National agricultural Institute Paris - Grignon. Paris, France*, pp. 288.
- 507 Fu, F., Wang, Q. 2011. Removal of heavy metal ions from wastewaters: a review. *Journal of*
508 *environmental management*, 92(3), 407-18.

- 509 Fu, G., Guo, Z., Zhang, J., Chen, Z., Wong, M.-H. 2015. Organic matter transplant improved
510 purification performance of newly built constructed wetlands. *Ecological Engineering*, 83, 338-
511 342.
- 512 Gautier, M., Kania, M., Merlot, L., Lupsea-Toader, M., Kim, B., Michel, P., Blanc, D., Gourdon,
513 R. 2017. Investigation of heavy metals leaching from VFCWs sludge deposit to evaluate
514 potential risks associated to land application. The 7th International Symposium for Wetland
515 Pollutant Dynamics and Control (WETPOL), Big Sky, Montana (USA), pp. 2.
- 516 Gomez, X., Cuetos, M.J., Garcia, A.I., Moran, A. 2007. An evaluation of stability by
517 thermogravimetric analysis of digestate obtained from different biowastes. *Journal of hazardous*
518 *materials*, 149(1), 97-105.
- 519 Grasset, C., Rodriguez, C., Delolme, C., Marmonier, P., Bornette, G. 2017. Can Soil Organic
520 Carbon Fractions Be Used as Functional Indicators of Wetlands? *Wetlands*, 37(6), 1195–1205.
- 521 Hamdani, A., Chennaoui, M., Assobhei, O., Mountadar, M. 2004. Caractérisation et traitement
522 par coagulation-décantation d'un effluent de laiterie. *Le Lait*, 84(3), 317-328.
- 523 Hua, G., Kong, J., Ji, Y., Li, M. 2018. Influence of clogging and resting processes on flow
524 patterns in vertical flow constructed wetlands. *The Science of the total environment*, 621, 1142-
525 1150.
- 526 Huang, G.F., Wu, Q.T., Wong, J.W.C., Nagar, B.B. 2006. Transformation of organic matter
527 during co-composting of pig manure with sawdust. *Bioresource technology*, 97(15), 1834-1842.
- 528 Huot, H. 2013. PhD Thesis. Formation, fonctionnement et évolution d'un Technosol
529 (Formation, fonctionnement and evolution of a Technosol). in: *Agronomic Sciences, National*
530 *School for Agronomy and Food Science - University of Lorraine. Vandoeuvre-lès-Nancy,*
531 *France*, pp. 394.
- 532 Iglesias Jiménez, E., Perez Garcia, V. 1989. Evaluation of city refuse compost maturity: a
533 review *Biological wastes*, 27, 115-142.
- 534 Kania, M. (2018b). Caractérisation des dépôts de surface des filtres plantés de roseaux à
535 écoulement vertical. Rôle et évolution de la matière organique particulaire. Doctoral thesis ;
536 INSA de Lyon, France ; June 1st, 2018, 265 pages
- 537 Kania, M., Gautier, M., Ni, Z., Bonjour, E., Guégan, R., Michel P., James, P., Liu, J., Gourdon
538 R. (2018a). Analytical indicators to characterize particulate organic matter evolutions in vertical
539 flow constructed wetlands *Science of the total environment*, 622-623, 801-813.
- 540 Kania, M. Gautier, M., Michel P., Gourdon, R. (2018c) Study of aggregation in surface sludge
541 deposits from 14 French vertical flow constructed wetlands using particle size distribution and
542 dynamic vapor sorption analyses. *Water Science & Technology* ,77(1), 79-90.
- 543 Kim, B., Gautier, M., Michel, P., Gourdon, R. 2013. Physical-chemical characterization of
544 sludge and granular materials from a vertical flow constructed wetland for municipal
545 wastewater treatment. *Water Science and Technology* 68, 2257-63.
- 546 Kim, B., Gautier, M., Prost-Boucle, S., Molle, P., Michel, P., Gourdon, R. 2014. Performance
547 evaluation of partially saturated vertical-flow constructed wetland with trickling filter and

548 chemical precipitation for domestic and winery wastewaters treatment. *Ecological Engineering*,
549 71, 41-47.

550 Kim, B., Gautier, M., Rivard, C., Sanglar, C., Michel, P., Gourdon, R. 2015. Effect of aging on
551 phosphorus speciation in surface deposit of a vertical flow constructed wetland. *Environmental*
552 *science & technology*, 49(8), 4903-10.

553 Kim B., Gautier M., Simidoff A., Sanglar C., Chatain V., Michel P., Gourdon R. 2016 pH and
554 Eh effects on phosphorus fate in constructed wetland's sludge surface deposit. *Journal of*
555 *Environmental Management*. 183, 175-181;

556 Knowles, P., Dotro, G., Nivala, J., García, J. 2011. Clogging in subsurface-flow treatment
557 wetlands: Occurrence and contributing factors. *Ecological Engineering*, 37(2), 99-112.

558 Lachassagne, D. 2015. PhD Thesis. Devenir de micropolluants présents dans les boues
559 d'épuration, du traitement à l'épandage agricole : Application aux micropolluants métalliques
560 (Cd, Cu) et organiques (médicaments) issus du traitement biologique conventionnel d'effluents
561 urbains ou hospitaliers (Becoming of micropollutants in sewage sludge, from treatment to
562 agricultural application: Application to metallic (Cd, Cu) and organic micropollutants (drugs)
563 resulting from the conventional biological treatment of urban or hospital effluents). in:
564 *Environment Sciences*, University of Limoges. Limoges, France, pp. 269.

565 Lee, C.G., Fletcher, T.D., Sun, G. 2009. Nitrogen removal in constructed wetland systems.
566 *Engineering in Life Sciences*, 9, 11-22.

567 Leinweber, P., Schulten, H.-R. 1992. Differential thermal analysis, thermogravimetry and in-
568 source pyrolysis-mass spectrometry studies on the formation of soil organic matter.
569 *Thermochimica Acta* 200, 151–167.

570 Li, X., Xing, M., Yang, J., Huang, Z. 2011. Compositional and functional features of humic
571 acid-like fractions from vermicomposting of sewage sludge and cow dung. *Journal of hazardous*
572 *materials*, 185(2-3), 740-8.

573 Liu, R., Zhao, Y., Doherty, L., Hu, Y., Hao, X. 2015a. A review of incorporation of constructed
574 wetland with other treatment processes. *Chemical Engineering Journal*, 279, 220-230.

575 Liu, X., Bayard, R., Benbelkacem, H., Buffière, P., Gourdon, R. 2015b. Evaluation of the
576 correlations between biodegradability of lignocellulosic feedstocks in anaerobic digestion
577 process and their biochemical characteristics. *Biomass and Bioenergy*, 81, 534-543.

578 Maeng, M., Choi, E., Dockko, S. 2015. Reduction of organic matter in drinking water using a
579 hybrid system combined with a rock biofilter and membrane in developing countries.
580 *International Biodeterioration & Biodegradation*, 102, 223-230.

581 Magdziarz, A., Wilk, M. 2013. Thermogravimetric study of biomass, sewage sludge and coal
582 combustion. *Energy Conversion and Management*, 75, 425-430.

583 Masciandaro, G., Peruzzi, E., Nielsen, S. 2017. Sewage sludge and waterworks sludge
584 stabilization in sludge treatment reed bed systems. *Water science and technology*, 76(2), 355-
585 363.

586 Matamoros, V., Nguyen, L.X., Arias, C.A., Nielsen, S., Laugen, M.M., Brix, H. 2012. Musk
587 fragrances, DEHP and heavy metals in a 20 years old sludge treatment reed bed system. *Water*
588 *research*, 46(12), 3889-96.

589 Melis, P., Castaldi, P. 2004. Thermal analysis for the evaluation of the organic matter evolution
590 during municipal solid waste aerobic composting process. *Thermochimica Acta*, 413(1-2), 209-
591 214.

592 Molle, P. 2014. French vertical flow constructed wetlands: a need of a better understanding of
593 the role of the deposit layer. *Water Science and Technology*, 69(1), 106-12.

594 Nielsen, S. 2005. Mineralization of hazardous organic compounds in a sludge reed bed and
595 sludge storage. *Water Science & Technology*, 51(9), 109-117.

596 Nielsen, S. 2011. Sludge treatment reed bed facilities--organic load and operation problems.
597 *Water science and technology*, 63(5), 941-7.

598 Nielsen, S., Bruun, E.W. 2015. Sludge quality after 10-20 years of treatment in reed bed systems.
599 *Environmental science and pollution research international*, 22(17), 12885-91.

600 Nielsen, S., Peruzzi, E., Macci, C., Doni, S., Masciandaro, G. 2014. Stabilisation and
601 mineralisation of sludge in reed bed systems after 10-20 years of operation. *Water science and*
602 *technology*, 69(3), 539-45.

603 Nielsen, S., Willoughby, N. 2005. Sludge treatment and drying reed bed systems in Denmark.
604 *Water and Environment Journal*, 19, 296-305.

605 Nivala, J., Knowles, P., Dotro, G., Garcia, J., Wallace, S. 2012. Clogging in subsurface-flow
606 treatment wetlands: measurement, modeling and management. *Water research*, 46(6), 1625-40.

607 Peccia J. and Westerhoff P. 2015. We Should Expect More out of Our Sewage Sludge,
608 *Environmental science & technology*, 49 (14), 8271–8276

609 Perron, V., Hébert, M. 2007. Caractérisation des boues d'épuration municipales. *Vecteur*
610 *environnement*, 48-52.

611 Peruzzi, E., Macci, C., Doni, S., Iannelli, R., Masciandaro, G. 2017. Stabilization process in
612 reed bed systems for sludge treatment. *Ecological Engineering*, 102, 381-389.

613 Peruzzi, E., Nielsen, S., Macci, C., Doni, S., Iannelli, R., Chiarugi, M., Masciandaro, G. 2013.
614 Organic matter stabilization in reed bed systems: Danish and Italian examples. *Water science*
615 *and technology*, 68(8), 1888-94.

616 Peysson, W., Vulliet, E. 2013. Determination of 136 pharmaceuticals and hormones in
617 sewage sludge using quick, easy, cheap, effective, rugged and safe extraction followed by
618 analysis with liquid chromatography-time-of-flight-mass spectrometry. *Journal of*
619 *chromatography. A*, 1290, 46-61.

620

621 Poon, C.S., Chu, C.W. 1999. The use of ferric chloride and anionic polymer in the chemically
622 assisted primary sedimentation process. *Chemosphere*, 39(10), 1573-1582.

623 Riffaldi, R. 1982. Humic Substances in Sewage Sludges. *Environmental Pollution*, 3(Serie B),
624 139-146.

- 625 Rouwane, A., Grybos, M., Bourven, I., Rabiet, M., Guibaud, G. 2017. Waterlogging and soil
626 reduction affect the amount and apparent molecular weight distribution of dissolved organic
627 matter in wetland soil: a laboratory study. *Soil Research*.
- 628 Semeraro, T., Giannuzzi, C., Beccarisi, L., Aretano, R., De Marco, A., Pasimeni, M.R., Zurlini,
629 G., Petrosillo, I. 2015. A constructed treatment wetland as an opportunity to enhance
630 biodiversity and ecosystem services. *Ecological Engineering*, 82, 517-526.
- 631 Serra-Wittling, C., Barriuso, E., Houot, S. 1996. Impact of composting type on composts
632 organic matter characteristics. *The Science of composting*, Bertoldi edition, Bologne
- 633 Som, M.P., Lemee, L., Ambles, A. 2009. Stability and maturity of a green waste and biowaste
634 compost assessed on the basis of a molecular study using spectroscopy, thermal analysis,
635 thermodesorption and thermochemolysis. *Bioresource technology*, 100(19), 4404-16.
- 636 Soucémarianadin, L., Cécillon, L., Chenu, C., Baudin, F., Nicolas, Cyril Girardin, M., Barré, P.
637 2018. Is Rock-Eval 6 thermal analysis a good indicator of soil organic carbon lability? – A
638 method-comparison study in forest soils. *Soil Biology and Biochemistry* 117, 108–116.
- 639 Stevenson, F.J. 1982. *Humus chemistry: genesis, composition, reactions*. John Wiley & Sons,
640 New York.
- 641 Torres-Climent, A., Gomis, P., Martin-Mata, J., Bustamante, M.A., Marhuenda-Egea, F.C.,
642 Perez-Murcia, M.D., Perez-Espinosa, A., Paredes, C., Moral, R. 2015. Chemical, Thermal and
643 Spectroscopic Methods to Assess Biodegradation of Winery-Distillery Wastes during
644 Composting. *PloS one*, 10(9), e0138925.
- 645 Ustun, G.E. 2009. Occurrence and removal of metals in urban wastewater treatment plants.
646 *Journal of hazardous materials*, 172(2-3), 833-8.
- 647 Van Oostrom, A.J., Russell, J.M. 1994. Denitrification in constructed wastewater wetlands
648 receiving high concentrations of nitrate. *Water science and technology*, 29(4), 7-14.
- 649 Vincent, J. 2011. PhD Thesis. Les lits de séchage de filtres plantés de roseaux pour le traitement
650 de boues activées et les matières de vidange (Sludge drying reed beds for treatment of sludge
651 activated and septage). in: *Chemical Sciences and Food science*, University of Montpellier II.
652 Montpellier, France, pp. 236.
- 653 Vincent, J., Forquet, N., Molle, P., Wisniewski, C. 2012. Mechanical and hydraulic properties
654 of sludge deposit on sludge drying reed beds (SDRBs): influence of sludge characteristics and
655 loading rates. *Bioresource technology*, 116, 161-9.
- 656 Vriens, B., Voegelin, A., Hug, S.J., Kaegi, R., Winkel, L.H.E., Buser, A.M., Berg, M. 2017.
657 Quantification of Element Fluxes in Wastewaters: A Nationwide Survey in Switzerland.
658 *Environmental science & technology*, 51(19), 10943-10953.
- 659 Wood, M., Wallace, P., Becvar, A., Waller, P. 2009. *Review of Stability Testing. Final Report*
660 - WRAP.
- 661 Wu, S., Kuschik, P., Brix, H., Vymazal, J., Dong, R. 2014. Development of constructed wetlands
662 in performance intensifications for wastewater treatment: a nitrogen and organic matter targeted
663 review. *Water research*, 57, 40-55.

- 664 Yang, M., Lu, M., Sheng, L., Wu, H. 2018. Study of the spatial and temporal distribution of
665 accumulated solids in an experimental vertical-flow constructed wetland system. *The Science*
666 *of the total environment*, 628-629, 509-516.
- 667 Zahra El Ouaquodi, F., El Fels, L., Lemée, L., Amblès, A., Hafidi, M. 2015. Evaluation of
668 lignocelullose compost stability and maturity using spectroscopic (FTIR) and thermal
669 (TGA/TDA) analysis. *Ecological Engineering*, 75, 217-222.
- 670 Zhao, Q., Zhong, H., Wang, K., Wei, L., Liu, J., Liu, Y. 2013. Removal and transformation of
671 organic matters in domestic wastewater during lab-scale chemically enhanced primary
672 treatment and a trickling filter treatment. *Journal of Environmental Sciences*, 25(1), 59-68.