



HAL
open science

Dysarthria in individuals with Parkinson's disease: a protocol for a binational, cross-sectional, case-controlled study in French and European Portuguese (FraLusoPark)

Serge Pinto, Rita Cardoso, Jasmin Sadat, Isabel Guimarães, Celine Mercier, Helena Santos, Cyril Atkinson-Clement, Joana Carvalho, Pauline Welby, Pedro De Oliveira, et al.

► **To cite this version:**

Serge Pinto, Rita Cardoso, Jasmin Sadat, Isabel Guimarães, Celine Mercier, et al.. Dysarthria in individuals with Parkinson's disease: a protocol for a binational, cross-sectional, case-controlled study in French and European Portuguese (FraLusoPark). *BMJ Open*, 2016, 6 (11), pp.e012885. 10.1136/bmjopen-2016-012885 . hal-01943040

HAL Id: hal-01943040

<https://hal.science/hal-01943040>

Submitted on 3 Dec 2018

HAL is a multi-disciplinary open access archive for the deposit and dissemination of scientific research documents, whether they are published or not. The documents may come from teaching and research institutions in France or abroad, or from public or private research centers.

L'archive ouverte pluridisciplinaire **HAL**, est destinée au dépôt et à la diffusion de documents scientifiques de niveau recherche, publiés ou non, émanant des établissements d'enseignement et de recherche français ou étrangers, des laboratoires publics ou privés.

BMJ Open Dysarthria in individuals with Parkinson's disease: a protocol for a binational, cross-sectional, case-controlled study in French and European Portuguese (FraLusoPark)

Serge Pinto,^{1,2} Rita Cardoso,^{3,4} Jasmin Sadat,^{1,2} Isabel Guimarães,^{4,5} Céline Mercier,^{1,6} Helena Santos,³ Cyril Atkinson-Clement,^{1,2} Joana Carvalho,³ Pauline Welby,^{1,2} Pedro Oliveira,^{4,7} Mariapaola D'Imperio,^{1,2} Sónia Frota,⁷ Alban Letanneux,¹ Marina Vigarío,⁷ Marisa Cruz,⁷ Isabel Pavão Martins,⁸ François Viallet,^{1,2,6} Joaquim J Ferreira^{3,4}

To cite: Pinto S, Cardoso R, Sadat J, *et al*. Dysarthria in individuals with Parkinson's disease: a protocol for a binational, cross-sectional, case-controlled study in French and European Portuguese (FraLusoPark). *BMJ Open* 2016;**6**:e012885. doi:10.1136/bmjopen-2016-012885

► Prepublication history for this paper is available online. To view these files please visit the journal online (<http://dx.doi.org/10.1136/bmjopen-2016-012885>).

Received 30 May 2016
Revised 21 September 2016
Accepted 21 October 2016



CrossMark

For numbered affiliations see end of article.

Correspondence to
Dr Serge Pinto;
serge.pinto@lpl-aix.fr

ABSTRACT

Introduction: Individuals with Parkinson's disease (PD) have to deal with several aspects of voice and speech decline and thus alteration of communication ability during the course of the disease. Among these communication impairments, 3 major challenges include: (1) dysarthria, consisting of orofacial motor dysfunction and dysprosody, which is linked to the neurodegenerative processes; (2) effects of the pharmacological treatment, which vary according to the disease stage; and (3) particular speech modifications that may be language-specific, that is, dependent on the language spoken by the patients. The main objective of the FraLusoPark project is to provide a thorough evaluation of changes in PD speech as a result of pharmacological treatment and disease duration in 2 different languages (French vs European Portuguese).

Methods and analysis: Individuals with PD are enrolled in the study in France (N=60) and Portugal (N=60). Their global motor disability and orofacial motor functions is assessed with specific clinical rating scales, without (OFF) and with (ON) pharmacological treatment. 2 groups of 60 healthy age-matched volunteers provide the reference for between-group comparisons. Along with the clinical examinations, several speech tasks are recorded to obtain acoustic and perceptual measures. Patient-reported outcome measures are used to assess the psychosocial impact of dysarthria on quality of life.

Ethics and dissemination: The study has been approved by the local responsible committees on human experimentation and is conducted in accordance with the ethical standards. A valuable large-scale database of speech recordings and metadata from patients with PD in France and Portugal will be constructed. Results will be disseminated in several articles in peer-reviewed journals and in conference presentations. Recommendations on how to assess

Strengths and limitations of this study

- A multicentre (binational), cross-sectional, case-controlled study.
- A cross-linguistic, multiparametric and holistic study of speech in Parkinson's disease (PD).
- An interdisciplinary approach bringing together data analyses from the speech sciences and neurosciences.
- A clinically reasonable number of individuals with PD.
- No analysis of phonetic alterations and so far, not a longitudinal study: unable to address individuals' speech deterioration with time.

speech and voice disorders in individuals with PD to monitor the progression and management of symptoms will be provided.

Trial registration number: NCT02753192, Pre-results.

INTRODUCTION

Dysarthria in Parkinson's disease (PD)

Dysarthria denotes a motor speech disorder resulting from a lesion of the peripheral or central nervous system.^{1–3} Dysarthria and the psychosocial aspects of communication impairments are particularly disabling for individuals with PD. During the progression of the disease, between 70% and 79% of individuals with PD mention that speech^{4 5} and functional communication are impaired,^{6 7} contributing to social isolation⁸ and degradation of social interactions.⁹ These speech and communication disorders

worsen along with the aggravation of other non-motor symptoms such as self-perception, depression¹⁰ and cognitive impairment.¹¹ In addition to the alteration of speech intelligibility, signally a motor-driven speech deficit, it is also important to consider the importance of cognitive impairment on everyday communication in individuals with PD.¹² Dysarthria can appear at any stage of PD, and usually worsens as the disease progresses,¹³ which suggests that it is also linked to the evolution of the pathological processes and non-dopaminergic brain circuits.^{14–16} The main deficits of PD speech are: loss of intensity (hypophonia), monotony of pitch and loudness, reduced stress, inappropriate silences, short rushes of speech, variable rate, imprecise consonant articulation and dysphonia (harsh and breathy voice).^{1 2 17} Previous studies have shown that treatments in PD have variable effects on these voice and speech symptoms.^{18 19}

Although behavioural treatments mainly focus on two key indices of PD speech, pitch and intensity, dysprosody has been understudied. Yet prosody deficits represent an acoustic hallmark of dysarthria. First, perceptual and acoustic investigations of PD speech have reported alterations on fundamental frequency (F0), as part of speakers' reduced phonatory capacity, and thus the reduction of the frequency range is an indicator of dysarthria in PD.²⁰ In particular, individuals with PD show a loss of the upper part of the frequency range.²¹ Degradation of prosody has been found to impact speech intelligibility and communication (eg, see ref. 22). Second, the temporal organisation of speech in PD has been addressed in reading tasks.^{23–25} In French, for example, speech rate tends to be slower in PD, which in turn seems to be correlated with longer pause times. Average durations of pauses are found to be longer in individuals with PD than in healthy individuals, while the average duration of sound sequences are similar.^{24 25} Studying dysprosody is thus important for differential diagnosis, identifying severity and the need and focus of treatment.²⁰

Remaining challenges to assess dysarthria in PD: the rationale of the FraLusoPark study

Individuals with PD have to cope with several issues that contribute to voice and speech decline and thus to the alteration of communication ability during the course of the disease. Among these communication impairments, three major challenges include: (1) dysarthria, consisting of orofacial motor dysfunction and dysprosody, which is linked to the neurodegenerative processes; (2) the effects of the pharmacological treatment, which vary according to the disease stage and (3) the particular speech modifications that may be language-specific, that is, dependent on the language spoken by the patients. The main objective of the FraLusoPark project is to provide an extensive evaluation of dysarthric speech in PD as a result of pharmacological treatment and disease duration, using acoustic parameters (voice and

prosody), perceptual markers (intelligibility) and patient-reported outcome measures (PROMs; psychosocial impact on quality of life) in speakers of two different languages (French and European Portuguese). Based on a large-scale binational collaboration, the interdisciplinary FraLusoPark project aims to address these issues by providing important insights in the domains of neurodegenerative disorders, speech sciences, neuropsychology, clinical research and patient rehabilitation.

Medication effects along disease progression

Early studies assessing the effect of the levodopa (L-dopa) on PD speech found favourable results, arguing for a beneficial effect, as for limb impairments.^{26–29} However, the long-term use of L-dopa is associated with motor complications which occur in up to 80% of patients.^{30 31} This may be the reason why the following studies reported no improvement^{32 33} and/or detrimental effects of L-dopa on speech.^{34 35} More recent studies face similar problems: beneficial effects of L-dopa can be observed in advanced patients with PD,^{36 37} whereas a lack of improvement is reported for speech parameters in early stage patients with PD.³⁸ It is also commonly accepted that in the later stages of PD, non-motor symptoms (dementia, psychosis, depression and apathy) are a major source of disability together with axial symptoms (eg, alteration of gait, balance, posture, speech).³⁹ Thus, both clinicians and researchers have to dissociate various intermingled effects. For example, when individuals with PD respond to L-dopa at an early stage of the disease, in time they are likely to experience speech decline that may be the result of the degeneration of non-dopaminergic structures and/or adverse effects of L-dopa (ie, dyskinesia). Despite the large number of recent studies that have focused on the effect of L-dopa on speech in PD,^{36–44} the question of disease evaluation still remains a matter of debate.

Language specificities of prosody

One missing component in the description of PD speech deficits is language-specific aspects, in particular of dysprosody. Prosodic information, including intonation, tempo, stress and rhythm, serves many functions for the listener and speaker: it helps to segment the continuous flow of spoken language into words, groups these words into phrases for interpretation, and indicates the relative importance and function of the interpreted meanings.^{45–48} Each language has its own prosodic structure. For example, although they are sister languages, French and European Portuguese (both Romance languages) differ prosodically in a number of important ways. European Portuguese has contrastive lexical stress: each content word (noun, adjective, verb, etc) has one syllable that is particularly salient or stressed, and changing the position of the lexical stress can change the meaning of a word.^{47 49–51} Stressed syllables may be accompanied by a pitch accent, realised as a

modulation in F0 (eg, a rise or a fall) and aligned in language-specific ways with the syllable. In contrast, French has a fixed stress, characterised by a systematic F0 rise on the last syllable in a word.^{52 53} In French, stress is not a property of the word, but of a larger unit called the accentual phrase that can include one or more content words and any preceding function words (articles, prepositions, etc), often realised with F0 rises at its right and left edges. French listeners use these F0 rises as cues to word segmentation, finding the beginning and ends of words in the speech stream, and to lexical access, retrieving words from the mental lexicon.^{48 54}

Such differences across languages make the comparison of prosodic deficits in individuals with PD particularly interesting. Very few studies of PD dysprosody have looked beyond global measures to examine the extent to which linguistically important, language-specific patterns are affected.^{55 56} Therefore, studying speech in individuals with PD whose languages include different prosodic modulations is essential in determining the role of prosody in patients' speech intelligibility and quality of life. Does a Portuguese patient experience different communication impairments compared with a French patient? If this is the case, could this difference be related, for example, to the fact that in Portuguese stress is distinctive and varies in position? Finally, how do these differences relate to disease duration and pharmacological treatment? Our project presents a novel approach to these questions and is characterised by the collection of cross-linguistic data in a single cohort.

METHODS AND ANALYSIS

FraLusoPark is a *binational* (data collection is performed in two countries: France and Portugal), *cross-sectional* (data are collected once for each participant) and *case-controlled* (both individuals with PD and control subjects are recruited) study, carried out in two different languages (French and European Portuguese).

Aims and hypotheses

The main objectives of our project are to evaluate modulations in voice/speech acoustics parameters (acoustics and prosody), perceptual markers (intelligibility) and PROMs (psychosocial impact of dysarthria in PD) across two different languages (French and European Portuguese).

Our three a priori hypotheses are the following: (1) global acoustic features are altered similarly in French and Portuguese individuals with PD; (2) language-specific prosodic patterns are altered differently in French and Portuguese individuals with PD and (3) the impact of speech disorders on intelligibility and quality of life depends on the cultural and linguistic environment. In addition, the FraLusoPark project will allow for a better understanding of the progression of speech symptoms and their response to pharmacological

treatment, which is important for pathophysiological aspects and clinical management.

Participants

Two groups of 60 healthy volunteers (one in France and one in Portugal) are age-matched and sex-matched with the individuals with PD to provide control references for the obtained performance measures. Individuals with PD are recruited in France (N=60; Neurology Department, Centre Hospitalier du Pays d'Aix, Aix-en-Provence, France) and in Portugal (N=60; Movement Disorders Unit, Hospital de Santa Maria, Lisbon, and Campus Neurológico Sénior (CNS), Torres Vedras, Portugal) and correspond to the UK Parkinson's Disease Brain Bank Criteria⁵⁷ for the diagnosis of idiopathic PD. Individuals with PD and healthy controls are all native speakers of French or European Portuguese speakers (French-European Portuguese bilinguals were excluded) and right-handed (Handedness Edinburgh test >80%).⁵⁸ Inclusion and exclusion criteria of patients with PD and healthy controls are summarised in [table 1](#). To assess the effects of L-dopa at various stages of the disease, we consider three subgroups of patients (N=20 patients each): subgroup 1, *early*, with a disease duration between 0 and 3 years and no motor fluctuations; subgroup 2, *medium*, with a disease duration between 4 and 9 years, or between 0 and 3 years and experiencing motor fluctuations; subgroup 3, *advanced*, with a disease duration of over 10 years.

Study design

Healthy control participants undergo the same non-invasive assessments and examinations as individuals with PD. The only difference for patients is that they are evaluated twice, in the OFF and ON L-dopa states. This entails: (1) at least 12 hours after withdrawal of all anti-Parkinsonian drugs and (2) following at least 1 hour after the administration of the usual medication. The full study design is illustrated in [figure 1](#).

Speech recordings

In a quiet room, specialised speech recording equipment (EVA2 system, SQLab, Aix-en-Provence, France; <http://www.sqlab.fr/>; Marantz PMD661 MKII recorder, USA) is used for the speech/voice recordings. Participants are recorded while performing several speech production tasks with increasing complexity in a fixed order: (1) steady vowel /a/phonation (at a comfortable pitch and loudness) repeated three times; (2) maximum phonation time (vowel /a/sustained as long as possible on one deep breath at a comfortable pitch and loudness), repeated twice; (3) oral diadochokinesia (repetition of the pseudoword *pataka* at a fast rate for 30 s); (4) reading aloud of 10 words and 10 sentences created by adapting the intelligibility part of V.2 of the Frenchay Dysarthria Assessment (FDA-2);⁵⁹ (5) reading aloud of a short text ('The North Wind and the Sun', French and European Portuguese adaptations);^{50 60} (6)

Table 1 Inclusion and exclusion criteria*All participants**Inclusion criteria*

Age between 35 and 85 years
 Good cooperation
 Ability to understand the information sheet
 Given signed consent
 Enrolled in a medical insurance plan
 Other stable medical problems not interfering with the proposed study
 Idiopathic Parkinson's disease*
 Absence of any neurological, psychiatric or behavioural pathology†

Exclusion criteria

Illiteracy
 French/Portuguese not native language, or bilingual
 Participant under tutorship or guardianship, or any other administrative or legal dependence
 No cooperation or consent withdrawn
 Cognitive deficits, severe depression, dementia, psychosis (including medication-induced) or behavioural, neurological, medical, psychological disorders that may interfere with evaluations
 Non-idiopathic Parkinson's disease*
 Deep brain stimulation*
 Severe motor impairment impeding participation in the study*

*Patients with Parkinson's disease.

†Control subjects.

storytelling speech guided by visual stimuli (pictures from the wordless story 'Frog, Where are you?',⁶¹ for the rationale of using this procedure and this book, see ref. 62); (7) reading aloud of a set of sentences with specific language-dependent prosodic properties (31 sentences in French, 20 in European Portuguese); and (8) free conversation for 3 min.

Acoustic measures

The acoustic measures characterise dimensions of aerophonatory control.⁶³ For the steady vowel /a/phonation, two kinds of measures will be extracted: first, for a macro analysis, F0 (Hz) and F0 variation (%); and second, for a micro analysis, perturbation measures such as jitter factor (%), absolute shimmer (dB) and harmonics-to-noise ratio (HNR, %). For the maximal phonation time, the longest duration (in seconds) of the sustained vowel /a/will be extracted. For the oral diadochokinesia task, the extracted measures will be the following: (1) the number of breath groups, that is, the period during which the pseudoword was repeated in a single expiration, (2) the ratio between the cumulated

speech duration of the breath groups and the total duration of the session, that is, the proportion of speech, (3) the articulatory rate (syllables/second), (4) the pause-to-sound ratio (%) and (5) the speech proportion per number of breath groups. As an initial step to investigate global prosodic aspects of PD speech compared with the speech of healthy controls, we will extract the F0 curve of one sentence selected from the short text ('The North Wind and the Sun'). This sentence is selected to be comparable across French and European Portuguese in terms of semantics and syllable length. This will provide a global phrasal pattern of F0 and intensity for patients and controls within and across languages (see below in the discussion for subsequent studies...). A summary of the acoustic measures that will be analysed is listed in [table 2](#).

Clinical assessments

The neurological assessment is the Unified Parkinson's Disease Rating Scale,⁶⁴ using the revised version provided by the *Movement Disorders Society* (MDS-UPDRS).⁶⁵ The FDA-2 is used to assess the functions of the speech

Figure 1 Overview of the FraLusoPark study design. Patient OFF-medication assessments (clinical history, speech recordings and clinical assessments, without medication) are shown in dark grey. ON-medication assessments (speech recordings and clinical assessments after medication are effective) are shown in light grey.

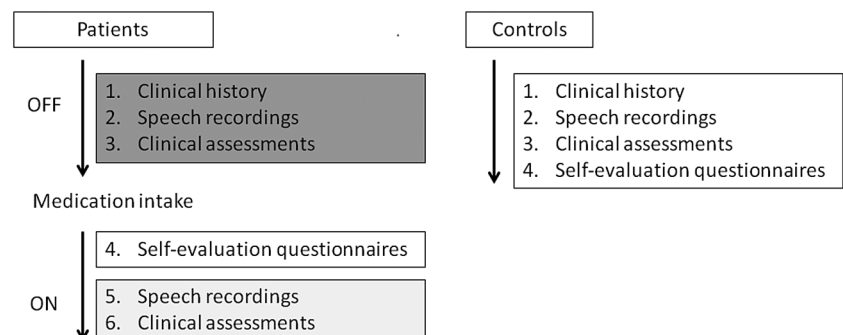


Table 2 Acoustic measures

Speech tasks	Function assessed	Acoustic measures
Steady vowel /a/ phonation	Phonation	Mean F0 (Hz) F0 variation (SD, in Hz) Shimmer (%)— <i>cycle-to-cycle F0 variation</i> Jitter (%)— <i>cycle-to-cycle intensity variation</i> HNR (%)
Maximal phonation time of the vowel /a/	Aero-phonatory control	Longest duration (in seconds)
Oral diadochokinesia	Supralaryngeal articulatory control	Number of breath groups Proportion of breath groups (%) Articulatory rate (in syllables/second) Pause-to-sound ratio (%) Speech proportion ratio (%)
Reading aloud of text	Prosody	F0 range (Hz) Intensity (dB)

F0, fundamental frequency; HNR, harmonics-to-noise ratio.

organs,⁵⁹ reflecting the state of the muscular effectors involved in speech production. The original FDA-2, in English, includes an evaluation of intelligibility through 10 words and 10 short sentences. Using the same methodology, we developed a set of cross-linguistically adapted words and sentences in French and European Portuguese that will be used for the intelligibility assessment in each language. During the OFF medication state, individuals with PD will be administered the FDA-2 and the motor part (part 3) of the MDS-UPDRS. During the ON medication state, these two assessments are performed together with the non-motor (part 1.A) and motor complication (part 4) part of the MDS-UPDRS. During the ON medication state, the participants' cognitive abilities are evaluated using the Montreal Cognitive Assessment (MoCA),⁶⁶ and the Clinical Global Impression (CGI) is also reported.⁶⁷ For healthy controls, the assessment is similar to that of the patients with PD during ON medication (except part 4 of the MDS-UPDRS). A summary of the clinical assessments is given in [table 3](#).

Patient-reported outcome measures

PROMs, such as the Dysarthria Impact Profile (DIP),⁶⁸ are used to obtain self-reported information about the functional impact of an individual's speech/communication impairment.⁶⁹ Additional self-assessments focus on the patients' perception of their quality of life (the 39-Item Parkinson's Disease Questionnaire (PDQ-39))^{70 71} and on how voice/speech impairment may induce a handicap (Voice Handicap Index, VHI).⁷² The French⁷³ and European Portuguese adapted DIP, VHI^{74 75} and PDQ-39^{76–78} are used in our study. The Patient Global Impression (PGI) scoring⁷⁹ and the Beck Depression Inventory (BDI)⁸⁰ are also administered. The MDS-UPDRS also includes a patient self-assessment (parts 1.B and 2), which is administered together with the other questionnaires in the ON condition. For healthy controls, the assessment is the same as for

individuals with PD. A summary of the PROMs from the self-administered questionnaires are listed in [table 3](#).

Statistical analyses

The analyses of the data (acoustic, clinical measures and PROMs) will be performed with linear mixed-effects models that account for the variability across individuals, using the latest version of the statistical software R (R Development Core Team. R: a language and environment for statistical computing. R Foundation for Statistical Computing, Vienna, Austria: 2014. ISBN 3–900051-07-0, <http://www.R-project.org/>). For each performance measure, the between-group factors *group* (patients vs controls), *disease duration* (early vs medium vs advanced) and *language* (French vs European Portuguese) will be investigated. In addition, we will explore the effects of the within-patient factor *medication* (OFF vs ON) for all measures. Further relevant participant-related measures such as age, gender and education level will also be taken into account in the analyses.

DISCUSSION

The present study will provide a unique, thorough and reliable assessment of PD voice, speech and prosody disorders and an evaluation of the impact of these aspects on the quality of life of individuals with PD.

Main and subsequent analyses of the FraLusoPark study

Acoustic and prosodic measurements ([table 2](#)), clinical assessment and PROMs ([table 3](#)) are the dependent variables to be analysed according to the statistical plan. These findings will be reported in the primary analysis as the main results of the project. However, the FraLusoPark investigation protocol will allow us to conduct additional analyses focusing on specific subdimensions of speech and voice deficits. There are at least four such subsequent analyses, exploring important

Table 3 Clinical assessments and patient-reported outcome measures

Description	Subsections	Minimum–maximum scores (worst values in bold)
<i>A. Clinical assessments</i>		
Movement Disorders Society—Unified Parkinson's Disease Rating Scale (MDS-UPDRS)— <i>Assessment of motor and non-motor features of Parkinson's disease</i> ⁶⁵	Non-motor experience of daily living—motor experience of daily living—motor examination—motor complications	0– 260
Frenchay Dysarthria Assessment, second edition (FDA-2)— <i>Assessment of speech and voice organs</i> ⁵⁹	Reflexes—Respiration—Lips—Palate—Larynx—Tongue—Intelligibility	0 –104
Montreal Cognitive Assessment (MoCA)— <i>Global assessment of cognitive functions</i> ⁶⁶	Visuospatial—Naming—Memory—Attention—Verbal fluency—Abstraction—Orientation	0 –30
Clinical Global Impression (CGI)— <i>Global impression of the clinician for the symptom</i> ⁶⁷	Speech	1– 7
<i>B. Patient-reported outcome measures (PROMs)</i>		
39-Item Parkinson's Disease Questionnaire (PDQ-39)— <i>Quality of life in Parkinson's disease</i> ⁷¹	Mobility—Daily living activities—Emotional well-being—Stigma—Social support—Cognition—Communication—Body discomfort	0– 156
Voice Handicap Index (VHI) ⁷²	Physical—Functional—Emotional	0– 120
Dysarthria Impact Profile (DIP)— <i>Psychosocial impact of speech deficits</i> ⁶⁸	Effect of dysarthria on me—Accepting my dysarthria—How I feel others react to my speech—How dysarthria affects my communication—Dysarthria relative to other worries and concerns	48 –240
Patient Global Impression (PGI)— <i>Global impression of the patient on the dysfunction</i> ⁷⁹	Speech	1– 7
Beck Depression Inventory (BDI)— <i>Global assessment of the depression profile</i> ⁸⁰		0– 84

aspects of PD speech and communication in more detail.

First, the intelligibility part of the FDA-2⁵⁹ requires the words and sentences produced by the patient to be perceptually rated by the clinician in charge of the assessment. Since these speech productions are recorded during the FraLusoPark protocol, an evaluation of speech intelligibility by panels of auditory judges in France and Portugal will be run. This will allow an additional and unbiased judgement of speech and voice disorders beyond that of the speech therapists and experts involved in the study. This approach further complements the global assessment of dysarthric speech in patients with PD.

Second, further prosodic analysis will be conducted on the defined sets of sentences, which manipulate language-general and language-specific details of prosody. One particular focus will be the analysis of tonal alignment in the F0 curve, that is, the temporal coordination of high and low tones with specific syllables in the sentences.^{81–83} Tonal alignment is likely to be a relevant factor in the study of PD dysprosody since it relies on the precise coordination of glottal and supra-glottal articulatory gestures required to achieve language-specific temporal patterns for pitch accents and boundary tones.

Third, taking into consideration patients' personal feelings with respect to the physical, psychological and social domains has received increasing interest over the past decade. Individuals with PD are affected by voice and speech disorders, which contribute to an impairment of general communication abilities. Individuals with PD are therefore less likely to participate in conversations or social interactions.^{6–9} Several studies suggest that a growing discomfort in verbal communication during the progression of the disease leads to an important negative impact on social life.^{70–84–85} Taken together, these studies argue for experimental designs that include different types of speech assessments (clinical, perceptual, instrumental and psychosocial), as in the current protocol, and that explore the relationships between these different measures. Further analyses will therefore focus on linking the different dimensions of voice and speech description (eg, acoustic measures, FDA-2) with the contributions of various participant-related measures such as intelligibility, cognition and functional communication.

Fourth, production and prosodic parameters from the three different speech tasks (ie, short text reading, orientated picture description and conversation) will be compared. This will allow us to compare speech and voicing disorders in increasingly more complex communication contexts. These comparisons are of interest since communication abilities in PD are quite different in the presence of external cueing, such as during reading, compared with spontaneous speech, which involves more complex speech planning strategies.

Finally, the FraLusoPark study might provide us the opportunity to address the deterioration of the speech of individuals with PD over time. In a longitudinal follow-up study, we would recruit a subgroup of patients from group 1 (disease duration up to 4-year) and group 2 (disease duration between 4 and 10 years). These patients would be evaluated again at a later point in time (about 5 years after the original recordings). This would allow us to describe the precise progression of speech deficits associated with PD within the same individual for French and Portuguese speakers.

ETHICS AND DISSEMINATION

This study has been approved by the local responsible committees on human experimentation (France: Comité de Protection des Personnes, Sud Méditerranée 1, project reference number 13-84, approval date 9 January 2014; Portugal: Ethics Committee of the Lisbon Academic Medical Centre, project reference number 239-14, approval date 1 June 2014). The study is conducted in accordance with the ethical standards of the Declaration of Helsinki.⁸⁶ The patients are included in the study after providing their written informed consent. The FraLusoPark trial is registered under the reference NCT02753192 (26 April 2016) on <https://clinicaltrials.gov/>.

Results of the FraLusoPark project will be disseminated at several research conferences at the national and international levels and published as articles in peer-reviewed journals and clinical magazines. The publication strategy is based on one principal article reporting the main results of the project and several subsequent articles deriving from it, including more detailed analyses of specific subdimensions of the speech and voice deficits.

Owing to inter-speaker variability, any generalisation drawn from speech parameters in the clinical population requires data from a large number of speakers.⁸⁷ The FraLusoPark project is in line with this idea in that it builds a large-scale corpus of PD speech recordings and includes a large set of metadata (clinical examinations, speech measurements, linguistic features, patient-based indices). This allows a more accurate description of PD dysarthria, documenting the evolution of the symptoms and their response to pharmacological treatment. Both in medical (eg, <http://www.mrc.ac.uk/research/research-policy-ethics/data-sharing/data-sharing-population-and-patient-studies/>) and linguistic (<http://sldr.org/>) domains, data sharing is important to maximise the lifetime value of human health data. It is our intention to contribute to this practice by archiving our data for long-term preservation and making them accessible after the completion of our analyses.

Furthermore, an important recommendation from the International Classification of Functioning, Disability and Health⁸⁸ is to improve quality of healthcare and to encourage clinicians to adopt a more holistic approach

to the assessment and treatment of patients. Research in the field of speech sciences needs to incorporate this vantage point when studying pathological speech. The FraLusoPark project is in line with this perspective and will provide important recommendations for speech and voice assessments in patients with PD. This will be helpful to health practitioners and clinicians when monitoring the progression of symptoms and their management, and will also advance our understanding of dysarthria in PD within a cross-linguistic and cross-cultural context.

Author affiliations

¹Aix Marseille Université, Centre National de la Recherche Scientifique (CNRS), Laboratoire Parole et Langage (LPL), Aix-en-Provence, France

²Brain and Language Research Institute, Aix-en-Provence, France

³Campus Neurológico Sénior (CNS), Torres Vedras, Portugal

⁴Faculty of Medicine, Instituto de Medicina Molecular (IMM), University of Lisbon, Lisbon, Portugal

⁵Speech Therapy Department, Escola Superior de Saude do Alcoitão, Alcabideche, Portugal

⁶Neurology Department, Centre Hospitalier du Pays d'Aix, Aix-en-Provence, France

⁷Centre of Linguistics, School of Arts and Humanities, University of Lisbon, Lisbon, Portugal

⁸Neurology Department, Faculty of Medicine, Language Research Laboratory, University of Lisbon, Lisbon, Portugal

Contributors SP and JJF are the principal investigators of the FraLusoPark study. They designed the study and ensure the good performance of the study. JJF and FV are the neurologists in charge of patient recruitment and neurological assessments. RC, JS, HS, CM, JC, FV and SP perform data acquisition and other clinical examinations. RC, JS, PO and IG are in charge of the pre-processing and analyses of acoustic measurements. CA-C and AL are in charge of the analyses of the PROMs and clinical assessments. PW, PO, MD, MC, SF and MV are the linguistic experts in charge of the prosody evaluations. IPM is the neurobehaviour, language and cognition expert. SP wrote the draft of the present article. All coauthors commented and revised it critically for important intellectual content, and approved the final version to be published.

Funding This study is supported by a bilateral transnational funding between France and Portugal: support from the French government, through the French National Agency for Research (ANR—Agence Nationale de la Recherche—grant number ANR-13-ISH2-0001-01) and from the Portuguese government, through the Portuguese National Foundation for Science and Technology (FCT—Fundação para a Ciência e a Tecnologia—grant number FCT-ANR/NEU-SCC/0005/2013). CA-C wishes to thank his PhD grant scheme co-funders: PACA Regional Council and Orthomalin (<http://www.orthomalin.com/>).

Competing interests None declared.

Patient consent Obtained.

Ethics approval France: Comité de Protection des Personnes, Sud Méditerranée 1, project reference number 13-84, approval date 09/01/2014; Portugal: Ethics Committee of the Lisbon Academic Medical Centre, project reference number 239-14, approval date 12/06/2014.

Provenance and peer review Not commissioned; externally peer reviewed.

Data sharing statement We addressed this point in the “Ethics and dissemination” section of the article, as follows: Both in medical (eg, <http://www.mrc.ac.uk/research/research-policy-ethics/data-sharing/data-sharing-population-and-patient-studies/>) and linguistic (<http://sldr.org/>) domains, data sharing is important to maximise the lifetime value of human health data. It is our intention to contribute to this practice by archiving our data for long-term preservation and making them accessible after the completion of our analyses.

Open Access This is an Open Access article distributed in accordance with the Creative Commons Attribution Non Commercial (CC BY-NC 4.0) license, which permits others to distribute, remix, adapt, build upon this work non-commercially, and license their derivative works on different terms, provided the original work is properly cited and the use is non-commercial. See: <http://creativecommons.org/licenses/by-nc/4.0/>

REFERENCES

1. Darley FL, Aronson AE, Brown JR. Clusters of deviant speech dimensions in the dysarthrias. *J Speech Hear Res* 1969;12:462–96.
2. Darley FL, Aronson AE, Brown JR. Differential diagnostic patterns of dysarthria. *J Speech Hear Res* 1969;12:246–69.
3. Duffy JR. Defining, understanding, and categorizing motor speech disorders. In: Duffy JR, ed. *Motor speech disorders—substrates, differential diagnosis, and management*. 3rd edn. Saint Louis: Elsevier Mosby, 2013:3–13.
4. Hartelius L, Svensson P. Speech and swallowing symptoms associated with Parkinson's disease and multiple sclerosis: a survey. *Folia Phoniatr Logop* 1994;46:9–17.
5. Miller N, Deane KHO, Jones D, et al. National survey of speech and language therapy provision for people with Parkinson's disease in the United Kingdom: therapists' practices. *Int J Lang Commun Disord* 2011;46:189–201.
6. Miller N, Noble E, Jones D, et al. Life with communication changes in Parkinson's disease. *Age Ageing* 2006;35:235–9.
7. Ramig LO, Bonitati CM, Lemke JH, et al. Voice treatment for patients with Parkinson's disease. Development of an approach and preliminary efficacy data. *J Med Speech Lang Pathol* 1994;2:191–209.
8. Karlisen KH, Tandberg E, Arslan D, et al. Health related quality of life in Parkinson's disease: a prospective longitudinal study. *J Neurol Neurosurg Psychiatr* 2000;69:584–9.
9. Fox C, Ramig L. Vocal sound pressure level and self-perception of speech and voice in men and women with idiopathic Parkinson disease. *Am J Speech Lang Pathol* 1997;2:29–42.
10. Miller N, Noble E, Jones D, et al. How do I sound to me? Perceived changes in communication in Parkinson's disease. *Clin Rehabil* 2008;22:14–22.
11. Barnish MS, Whibley D, Horton SMC, et al. Roles of cognitive status and intelligibility in everyday communication in people Parkinson's disease: a systematic review. *J Parkinsons Dis* 2016;6:453–62.
12. Schneider JS, Sendek S, Yang C. Relationship between motor symptoms, cognition, and demographic characteristics in treated mild/moderate Parkinson's disease. *PLoS ONE* 2015;10:e0123231.
13. Klawans HL. Individual manifestations of Parkinson's disease after ten or more years of levodopa. *Mov Disord* 1986;1:187–92.
14. Agid Y, Graybiel AM, Ruberg M, et al. The efficacy of levodopa treatment declines in the course of Parkinson's disease: do nondopaminergic lesions play a role? *Adv Neurol* 1990;53:83–100.
15. Braak H, Braak E, Yilmazer D, et al. Nigral and extranigral pathology in Parkinson's disease. *J Neural Transm Suppl* 1995;46:15–31.
16. Halliday G, Lees A, Stern M. Milestones in Parkinson's disease—clinical and pathologic features. *Mov Disord* 2011;26:1015–21.
17. Ho AK, Bradshaw JL, Iansek R, et al. Speech volume regulation in Parkinson's disease: effects of implicit cues and explicit instructions. *Neuropsychologia* 1999;37:1453–60.
18. Pinto S, Ozsancak C, Tripoliti E, et al. Treatments for dysarthria in Parkinson's disease. *Lancet Neurol* 2004;3:547–56.
19. Atkinson-Clement C, Sadat J, Pinto S. Behavioral treatments for speech in Parkinson's disease: meta-analyses and review of the literature. *Neurodegener Dis Manag* 2015;5:233–48.
20. Patel R. Assessment of prosody. In: Lowit A, Kent R, eds. *Assessment of motor speech disorders*. San Diego: Plural Publishing, 2011:75–96.
21. Viallet F, Meynadier Y, Lagrue B, et al. The reductions of tonal range and of average pitch during speech production in “off” parkinsonians are restored by L-DOPA. *Mov Disord* 2000;15:S131.
22. Cheang HS, Pell MD. An acoustic investigation of Parkinsonian speech in linguistic and emotional contexts. *J Neurolinguistics* 2007;20:221–41.
23. Hammen VL, Yorkston KM. Speech and pause characteristics following speech rate reduction in hypokinetic dysarthria. *J Comm Disord* 1996;29:429–44.
24. Duez D. Organisation temporelle de la parole et dysarthrie parkinsonienne. In: Ozsancak C, Auzou P, eds. *Les troubles de la parole et de la déglutition dans la maladie de Parkinson*. Marseille: Solal, 2005:195–211.
25. Duez D. Segmental duration in Parkinsonian French speech. *Folia Phoniatr Logop* 2009;61:239–46.

26. Rigródsky S, Morrison EB. Speech changes in parkinsonism during L-dopa therapy: preliminary findings. *J Am Geriatr Soc* 1970;18:142–51.
27. Mawdsley C, Gamsu CV. Periodicity of speech in Parkinsonism. *Nature* 1971;231:315–16.
28. Leanderson R, Meyerson BA, Persson A. Effect of L-dopa on speech in Parkinsonism. An EMG study of labial articulatory function. *J Neurol Neurosurg Psychiatry* 1971;34:679–81.
29. Nakano KK, Zubick H, Tyler HR. Speech defects of parkinsonian patients. Effects of levodopa therapy on speech intelligibility. *Neurology* 1973;23:865–70.
30. Ferreira JJ, Rascol O, Poewe W, et al. A double-blind, randomized, placebo and active-controlled study of nebicapone for the treatment of motor fluctuations in Parkinson's disease. *CNS Neurosci Ther* 2010;16:337–47.
31. Mestre T, Ferreira JJ. Pharmacotherapy in Parkinson's disease: case studies. *Ther Adv Neurol Disord* 2010;3:117–26.
32. Wolfe VI, Garvin JS, Bacon M, et al. Speech changes in Parkinson's disease during treatment with L-dopa. *J Commun Disord* 1975;8:271–9.
33. Quagliari CE, Celesia GG. Effect of thalamotomy and levodopa therapy on the speech of Parkinson patients. *Eur Neurol* 1977;15:34–9.
34. Marsden CD, Parkes JD. "On-off" effects in patients with Parkinson's disease on chronic levodopa therapy. *Lancet* 1976;1:292–6.
35. Critchley EM. Letter: peak-dose dysphonia in parkinsonism. *Lancet* 1976;1:544.
36. De Letter M, Santens P, De Bodt M, et al. The effect of levodopa on respiration and word intelligibility in people with advanced Parkinson's disease. *Clin Neurol Neurosurg* 2007;109:495–500.
37. De Letter M, Santens P, Estercam I, et al. Levodopa-induced modifications of prosody and comprehensibility in advanced Parkinson's disease as perceived by professional listeners. *Clin Linguist Phon* 2007;21:783–91.
38. Skodda S, Visser W, Schlegel U. Short- and long-term dopaminergic effects on dysarthria in early Parkinson's disease. *J Neural Transm (Vienna)* 2010;117:197–205.
39. Coelho M, Ferreira JJ. Late-stage Parkinson disease. *Nat Rev Neurol* 2012;8:435–42.
40. Goberman A, Coelho C, Robb M. Phonatory characteristics of parkinsonian speech before and after morning medication: the ON and OFF states. *J Commun Disord* 2002;35:217–39.
41. Goberman AM, Blomgren M. Parkinsonian speech disfluencies: effects of L-dopa-related fluctuations. *J Fluency Disord* 2003;28:55–70.
42. Pinto S, Gentil M, Krack P, et al. Changes induced by levodopa and subthalamic nucleus stimulation on parkinsonian speech. *Mov Disord* 2005;20:1507–15.
43. Skodda S, Flasskamp A, Schlegel U. Instability of syllable repetition in Parkinson's disease—influence of levodopa and deep brain stimulation. *Mov Disord* 2011;26:728–30.
44. Skodda S, Grönheit W, Schlegel U. Intonation and speech rate in Parkinson's disease: general and dynamic aspects and responsiveness to levodopa admission. *J Voice* 2011;25:e199–205.
45. Ladd R. *Intonational phonology*. Cambridge: Cambridge University Press, 1996.
46. Frota S. Nuclear falls and rises in European Portuguese: a phonological analysis of declarative and question intonation. *Probus* 2002;14:113–46.
47. Frota S. The intonational phonology of European Portuguese. In: Jun SA, edr. *Prosodic typology II. The phonology of intonation and phrasing, chapter 2*. Oxford: Oxford University Press, 2014:6–42.
48. Welby P. The role of early fundamental frequency rises and elbows in French word segmentation. *Speech Commun* 2007;49:28–48.
49. Cruz-Ferreira M. Intonation in European Portuguese. In: Hirst D, Di Cristo A, eds. *Intonation systems. A survey of twenty languages*. Cambridge: Cambridge University Press, 1998:167–78.
50. Cruz-Ferreira M. Part 2: Illustrations of the IPA. *Portuguese (European)*. In: Handbook of the International Phonetic Association. *A guide to the use of the International Phonetic Alphabet*. Cambridge: Cambridge University Press, 1999:126–30.
51. Frota S. *Prosody and focus in European Portuguese. Phonological phrasing and intonation*. New York: Garland Publishing, 2000.
52. Jun SA, Fougeron C. Realizations of accentual phrase in French. *Probus* 2002;14:147–72.
53. Welby P. French intonational structure: evidence from tonal alignment. *J Phonetics* 2006;34:343–71.
54. Spinelli E, Grimault N, Meunier F, et al. An intonational cue to word segmentation in phonemically identical sequences. *Atten Percept Psychophys* 2010;72:775–87.
55. Ma JK, Whitehill TL, So SY. Intonation contrast in Cantonese speakers with hypokinetic dysarthria associated with Parkinson's disease. *J Speech Lang Hear Res* 2010;53:836–49.
56. Whitehill TL. Studies of Chinese speakers with dysarthria: informing theoretical models. *Folia Phoniatr Logop* 2010;62:92–6.
57. Gibb WR, Lees AJ. The relevance of the Lewy body to the pathogenesis of idiopathic Parkinson's disease. *J Neurol Neurosurg Psychiatr* 1988;51:745–52.
58. Oldfield RC. The assessment and analysis of handedness: the Edinburgh inventory. *Neuropsychologia* 1971;9:97–113.
59. Enderby P, Palmer R. *Frenchay Dysarthria Assessment. (FDA-2)*. 2nd edn. Austin, TX: Pro-ED, 2007.
60. Fougeron C, Smith CL. Part 2: illustrations of the IPA. *French*. In: Handbook of the International Phonetic Association. *A guide to the use of the International Phonetic Alphabet*. Cambridge: Cambridge University Press, 1999:78–81.
61. Mayer M. *Frog, where are you? Sequel to a boy, a dog and a frog*. New-York: Dial books, 1969.
62. Berman RA, Slobin DI. *Relating events in narrative: a crosslinguistic developmental study*. Hillsdale, NJ: Lawrence Erlbaum Associates, 1994.
63. Baken RJ, Orlikoff RF. *Clinical measurement of speech and voice*. San Diego: Singular Publishing Group Inc, 2000.
64. Fahn S, Elton RL, members of the UPDRS Development Committee. Unified Parkinson's Disease Rating Scale. In: Fahn S, Marsden CD, Calne DB, eds. *Recent developments in Parkinson's disease, Vol. 2*. Florham Park: MacMillan Health Care Information, 1987:153–64.
65. Movement Disorder Society Task Force on Rating Scales for Parkinson's Disease. The Unified Parkinson's Disease Rating Scale (UPDRS): status and recommendations. *Mov Disord* 2003;18:738–50.
66. Nasreddine ZS, Phillips NA, Bédirian V, et al. The Montreal Cognitive Assessment, MoCA: a brief screening tool for mild cognitive impairment. *J Am Geriatr Soc* 2005;53:695–9.
67. Busner J, Targum SD. The Clinical Global Impressions scale: applying a research tool in clinical practice. *Psychiatry (Edgmont)* 2007;4:28–37.
68. Walshe M, Peach RK, Miller N. Dysarthria impact profile: development of a scale to measure psychosocial effects. *Int J Lang Com Disord* 2009;44:693–715.
69. Walshe M. The psychosocial impact of acquired motor speech disorders. In: Lowit A, Kent RD, eds. *Assessment of motor speech disorders*. San Diego: Plural Publishing Inc, 2011:97–122.
70. Jenkinson C, Peto V, Fitzpatrick R, et al. Self-reported functioning and well-being in patients with Parkinson's disease: comparison of the short-form health survey (SF-36) and the Parkinson's Disease Questionnaire (PDQ-39). *Age Ageing* 1995;24:505–9.
71. Peto V, Jenkinson C, Fitzpatrick R, et al. The development and validation of a short measure of functioning and well being for individuals with Parkinson's disease. *Qual Life Res* 1995;4:241–8.
72. Jacobson BH, Johnson A, Grywalski C, et al. The Voice Handicap Index (VHI), development and validation. *Am J Speech Pathol* 1997;6:66–70.
73. Letanneux A, Viallet F, Walshe M, et al. The Dysarthria Impact Profile: a preliminary French experience with Parkinson's disease. *Parkinsons Dis* 2013;2013:403680.
74. Guimarães I, Abberton E. An investigation of the Voice Handicap Index with speakers of Portuguese: preliminary data. *J Voice* 2004;18:71–82.
75. Woisard V, Bodin S, Puech M. [The Voice Handicap Index: impact of the translation in French on the validation]. *Rev Laryngol Otol Rhinol* 2004;125:307–12.
76. Auquier P, Sapin C, Ziegler M, et al. [Validation of the French language version of the Parkinson's Disease Questionnaire—PDQ-39]. *Rev Neurol (Paris)* 2002;158:41–50.
77. Souza RG, Borges V, Silva SM, et al. Quality of life scale in Parkinson's disease PDQ-39 (Brazilian Portuguese version) to assess patients with and without levodopa motor fluctuation. *Arq Neuro Psiquiatr* 2007;65:787–91.
78. Vieira EM. *Qualidade de vida na doença de Parkinson*. Ph.D. thesis. Faculdade de Medicina da Universidade de Coimbra. 2008.
79. Hurst H, Bolton J. Assessing the clinical significance of change scores recorded on subjective outcome measures. *J Manipulative Physiol Ther* 2004;27:26–3.
80. Beck AT, Ward CH, Mendelson M, et al. An inventory for measuring depression. *Arch Gen Psychiatry* 1961;4:561–71.
81. D'Imperio M. Prosodic representations (section on tonal alignment). In: Cohn A, Fougeron C, Huffman M, eds. *The Oxford Handbook of*



- Laboratory Phonology*. Oxford: Oxford University Press, 2011:275–87.
82. Welby P, Lœvenbruck H. Anchored down in anchorage: syllable structure and segmental anchoring in French. *Italian J Ling* 2006;18:74–124.
 83. Frota S. Tonal association and target alignment in European Portuguese nuclear falls. In: Gussenhoven C, Warner N, eds. *Laboratory phonology 7*. Berlin/New York: Mouton de Gruyter, 2002:387–418.
 84. Martínez-Martin P. An introduction to the concept of “quality of life in Parkinson’s disease”. *J Neurol* 1998;245:S2–6.
 85. Kuopio AM, Marttila RJ, Helenius H, *et al*. The quality of life in Parkinson’s disease. *Mov Disord* 2000;15:216–23.
 86. World Medical Association. *59th General Assembly*. Seoul, Korea: World Medical Association, 2008.
 87. Ghio A, Pouchoulin G, Teston B, *et al*. How to manage sound, physiological and clinical data of 2500 dysphonic and dysarthric speakers? *Speech Commun* 2012;54:664–79.
 88. World Health Organisation (WHO). *International Classification of Functioning (ICF), Disability and Health*. Geneva, Switzerland: World Health Organisation, 2001.

BMJ Open

Dysarthria in individuals with Parkinson's disease: a protocol for a binational, cross-sectional, case-controlled study in French and European Portuguese (FraLusoPark)

Serge Pinto, Rita Cardoso, Jasmin Sadat, Isabel Guimarães, Céline Mercier, Helena Santos, Cyril Atkinson-Clement, Joana Carvalho, Pauline Welby, Pedro Oliveira, Mariapaola D'Imperio, Sónia Frota, Alban Letanneux, Marina Vigario, Marisa Cruz, Isabel Pavão Martins, François Viallet and Joaquim J Ferreira

BMJ Open 2016 6:
doi: [10.1136/bmjopen-2016-012885](https://doi.org/10.1136/bmjopen-2016-012885)

Updated information and services can be found at:
<http://bmjopen.bmj.com/content/6/11/e012885>

These include:

References

This article cites 68 articles, 7 of which you can access for free at:
<http://bmjopen.bmj.com/content/6/11/e012885#BIBL>

Open Access

This is an Open Access article distributed in accordance with the Creative Commons Attribution Non Commercial (CC BY-NC 4.0) license, which permits others to distribute, remix, adapt, build upon this work non-commercially, and license their derivative works on different terms, provided the original work is properly cited and the use is non-commercial. See: <http://creativecommons.org/licenses/by-nc/4.0/>

Email alerting service

Receive free email alerts when new articles cite this article. Sign up in the box at the top right corner of the online article.

Topic Collections

Articles on similar topics can be found in the following collections

[Communication](#) (165)
[Ear, nose and throat/otolaryngology](#) (60)
[Medical management](#) (188)
[Neurology](#) (340)
[Patient-centred medicine](#) (384)
[Pharmacology and therapeutics](#) (388)

To request permissions go to:
<http://group.bmj.com/group/rights-licensing/permissions>

To order reprints go to:
<http://journals.bmj.com/cgi/reprintform>

To subscribe to BMJ go to:
<http://group.bmj.com/subscribe/>

Notes

To request permissions go to:
<http://group.bmj.com/group/rights-licensing/permissions>

To order reprints go to:
<http://journals.bmj.com/cgi/reprintform>

To subscribe to BMJ go to:
<http://group.bmj.com/subscribe/>