



HAL
open science

Derivative Half Gaussian Kernels and Shock Filter

Baptiste Magnier, Vincent Noblet, Adrien Voisin, Dylan Legouestre

► **To cite this version:**

Baptiste Magnier, Vincent Noblet, Adrien Voisin, Dylan Legouestre. Derivative Half Gaussian Kernels and Shock Filter. ACIVS 2018 - Advanced Concepts for Intelligent Vision Systems, Sep 2018, Poitiers, France. pp.584-597, <10.1007/978-3-030-01449-0_49>. <hal-01940267>

HAL Id: hal-01940267

<https://hal.science/hal-01940267v1>

Submitted on 10 Dec 2018

HAL is a multi-disciplinary open access archive for the deposit and dissemination of scientific research documents, whether they are published or not. The documents may come from teaching and research institutions in France or abroad, or from public or private research centers.

L'archive ouverte pluridisciplinaire HAL, est destinée au dépôt et à la diffusion de documents scientifiques de niveau recherche, publiés ou non, émanant des établissements d'enseignement et de recherche français ou étrangers, des laboratoires publics ou privés.



HAL Authorization

Derivative Half Gaussian Kernels and Shock Filter

Baptiste Magnier, Vincent Noblet, Adrien Voisin and Dylan Legouestre

IMT Mines Alès, LGI2P, 6. avenue de Clavières 30100 Alès, France

Baptiste.Magnier@mines-ales.fr

{Vincent.Noblet,Adrien.Voisin,Dylan.Legouestre}@mines-ales.org

Abstract. Shock filter represents an important family in the field of nonlinear Partial Differential Equations (PDEs) models for image restoration and enhancement. Commonly, the smoothed second order derivative of the image assists this type of method in the deblurring mechanism. This paper presents the advantages to insert information issued of oriented half Gaussian kernels in a shock filter process. Edge directions assist to preserve contours whereas the gradient direction allow to enhance and deblur images. For this purpose, the two edge directions are extracted by the oriented half kernels, preserving and enhancing well corner points and object contours as well as small objects. The proposed approach is compared to 7 other PDE techniques, presenting its robustness and reliability, without creating a grainy effect around edges.

Keywords: Half Gaussian Kernels, Shock Filter, PDE.

1 From Heat Equation to Anisotropic Diffusion

Since 1960, digital images may simply be deblurred by combining the difference between an original image I_0 and ΔI : a blurred version of this same image. Usually, ΔI corresponds to a blur process equivalent to the heat equation or a convolution of I_0 with an isotropic Gaussian. This original theory proposed by Gabor is proportional to using the Laplacian operator [7]. Thus, a simplest manner to remove blur in an image remains the equation:

$$\frac{\partial I}{\partial t} = I_0 - \alpha \cdot \Delta I, \quad (1)$$

where t represents the time or the observation scale and $\alpha < 1$ is a little scalar to control the deblurring. This process is equivalent to the inverse heat equation. However, this technique is not stable because the procedure blows up after several iterations and generates an unusable image [7]. To improve eq. 1, rather than applying a global operator on all the image, the main idea is to iterate local operator at level of each pixel. Nonlinear Partial Differential Equations (PDEs) may achieve this task [7,2], practicing anisotropic diffusions of pixel information in the image. Indeed, PDEs belong to one of the most important part of mathematical analysis and are closely related to the physical world. In this context, images are considered as evolving functions of time and a regularized image can be seen as a version of the original image at a special scale.

2 On Existing Shock Filters

The main PDEs for image deblurring are presented in this section. In order to regularize images by controlling the diffusion, the pioneer work of Perona and Malik on anisotropic diffusion has been one of the most influential paper in the area [17]. The proposed model is described by the following equation:

$$\frac{\partial I}{\partial t}(x, y, t) = \operatorname{div}(g(|\nabla I|) \cdot |\nabla I|), \quad (2)$$

where $|\nabla I|$ represents the modulus of the gradient with mask of type [-1 1] and g a decreasing function satisfying $g(0) = 1$ and $g(+\infty) = 0$; this function may be:

$$g(|\nabla I|) = e^{-\left(\frac{|\nabla I|}{K}\right)^2}, \quad (3)$$

with $K \in \mathbb{R}_*^+$ a constant that can be assimilated to a gradient threshold or a diffusion barrier, slowing down diffusion near edges, where $|\nabla I|$ is large. Moreover, by developing eq. 2, it is well known that the diffusion moves backward when $|\nabla I| > K$, creating time-reverse equation (deblurring effect) called a shock filter.

Original Shock Filter: In the PDE framework, the seminal contribution [16] is equivalent to eq. 1, the 2D formulation of the original shock filter is:

$$\frac{\partial I}{\partial t} = -\operatorname{sign}(\Delta I) \cdot |\nabla I|. \quad (4)$$

This PDE produces a dilation/erosion for each pixel, creating a high sensitivity to noise pixels, so a number of improvements have been proposed.

Shock Filter involving Gaussian: In order to be more robust to noise, the Gaussian function G_σ may be convolved with $I_{\eta\eta}$, the second directional derivative of the image in the gradient direction, where σ represents the standard deviation of the Gaussian. Coupling diffusion ($I_{\xi\xi}$ term [7,2,19,13]) and shock filter, Alvarez and Mazonra (AM) in [3] proposed the following equation:

$$\frac{\partial I}{\partial t} = C_\xi \cdot I_{\xi\xi} - \operatorname{sign}(G_\sigma * I_{\eta\eta}) \cdot |\nabla I|, \quad (5)$$

where $|\nabla I|$ is the modulus of the gradient with a 3×3 mask (as Sobel masks), C_ξ denotes a control function of the diffusivity, as in eq. 3, $I_{\xi\xi}$ denotes the second derivative in the orthogonal direction of η , i.e., the edge direction. It corresponds to a pure diffusion in the contour directions, called the curvature equation.

Some evolutions of this approach have been proposed, as in [8], where an isotropic diffusion (ΔI) is applied concerning small gradients. Fu *et al.* [5] proposed a PDE technique that weights the diffusion and shock terms in accordance with threshold values of the gradient magnitude:

$$\begin{cases} \frac{\partial I}{\partial t} = c_1 \cdot I_{\xi\xi} - \operatorname{sign}(G_\sigma * I_{\eta\eta}) \cdot |\nabla I|, & \text{if } |\nabla I| > T_1 \\ \frac{\partial I}{\partial t} = c_1 \cdot I_{\xi\xi} - c_2 \cdot \operatorname{sign}(G_\sigma * I_{\eta\eta}) \cdot |\nabla I|, & \text{if } T_1 > |\nabla I| > T_2 \\ \frac{\partial I}{\partial t} = \Delta I = I_{\xi\xi} + I_{\eta\eta} & \text{elsewhere,} \end{cases} \quad (6)$$

with $c_1 = \frac{1}{1+\zeta_1 \cdot I_{\xi\xi}^2}$, ($\zeta_1 \in \mathbb{R}^+$), and $c_2 = |\text{th}(\zeta_2 \cdot I_{\eta\eta})|$, ($\zeta_2 \in \mathbb{R}^+$). The authors divided the image into three-type regions by its smoothed gradient magnitude. For high gradients (generally boundaries), a shock-type backward diffusion is performed in the gradient direction for the deblurring. For medium gradients (such as textures and details), a soft shock-type backward diffusion is performed, as eq. 5. As far as small gradients are concerned (such as inside different areas or flat regions), an isotropic diffusion is applied (heat equation).

On the other hand, Bettahar [4] proposed a combination of nonlinear reaction-curvature diffusion and shock filter. The gradient modulus of $f(s) = f \frac{1}{1+s^2/k}$ applied on the gradient magnitude $|\nabla(f(|\nabla I_\sigma|))|$ favors or inhibits the shock filter in accordance with the gradient magnitude.

The main problem of the based-Gaussian models is the creation of homogeneous blobs in flat noisy regions, as illustrated in Figs. 1(b), 5(b) and Fig. 6(b). Moreover, after a certain number of iterations a corner smoothing could be created, as show for the extremity of the star in Fig. 5(b).

Complex Shock Filter : A different solution proposed by Gilboa *et al.* [6] is to change the *sign* function (cf. eq. 4) in order to take into account both the 2nd order direction of the the second derivative and its magnitude. Denoting $Im(I)$, the imaginary part of I , by using $\frac{2}{\pi} \arctan(a \cdot Im(\frac{I}{\theta}))$, $a \in \mathbb{R}^+$ represents the parameter controlling the steepness of the slope of the 2nd order derivative near 0. When $\theta \in \mathbb{R}_*^+$ tend to 0, $Im(\frac{I}{\theta})$ may be considered as the smoothed 2nd order derivative of I . The complex shock filter is described by the following equation:

$$\frac{\partial I}{\partial t} = -\frac{2}{\pi} \arctan(a \cdot Im(\frac{I}{\theta})) \cdot |\nabla I| + \Lambda \cdot I_{\eta\eta} + \tilde{\Lambda} \cdot I_{\xi\xi}, \quad (7)$$

where Λ is a complex diffusion term regularizing the noise and indicating inflection points. $\tilde{\Lambda}$ is a real scalar parameter which correspond to the amount of diffusion in level-set direction. Using eq. 7, the regions close to contours where the 2nd order derivative has a higher magnitude, i.e., inflection points will not have equal weights. This translates into a higher deblurring speed near edges and contours than in the flat regions of the image.

The complex shock has been improved in [9] to correct its main default: a weak edges enhancement. Denoting $\frac{\partial I}{\partial t} = I_t$ and $Re(I)$ the real part of I , the mathematical expression of this PDE can be decomposed in two expressions:

$$\begin{aligned} Re(I_t) &= \frac{2}{\pi} \arctan(a \cdot Im(\frac{I}{\theta})) \cdot f_1 \cdot |\nabla I| - \text{sign}(Re(I_{\eta\eta})) \cdot f_2 \cdot |\nabla I| \\ &+ f_1 \cdot (Re(\Lambda) \cdot Re(I_{\eta\eta}) - Im(\Lambda) \cdot Im(I_{\eta\eta}) + \tilde{\Lambda} \cdot Re(I_{\xi\xi})) \end{aligned} \quad (8)$$

$$Im(I_t) = Im(\lambda) \cdot Re(I_{\eta\eta}) - Re(\lambda) \cdot Im(I_{\eta\eta}) + \tilde{\Lambda} \cdot Im(I_{\xi\xi}). \quad (9)$$

As this filter is an improvement of the eq. 7, it possesses the same variables. However the 2 new functions f_1 and f_2 are the filter core, and control the transition between an entirely complex and an entirely real filter. For N iterations, they are define as: for $i = 0, 1, \dots, N - 1$ and $T_{l_1}, T_{s_1}, T_{l_2}, T_{s_2} \in (0, N - 1)$,

$$f_1(T_{l_1}, T_{s_1}) = \begin{cases} 1, & i < T_{l_1} \\ 1 - \frac{i-T_{l_1}}{T_{s_1}-T_{l_1}}, & \text{elsewhere,} \\ 0, & i > T_{s_1} \end{cases} \quad f_2(T_{l_2}, T_{s_2}) = \begin{cases} 0, & i < T_{l_2} \\ \frac{i-T_{l_2}}{T_{s_2}-T_{l_2}}, & \text{elsewhere.} \\ 1, & i > T_{s_2} \end{cases}$$

When $f_1=1$ and $f_2=0$ this technique behaves exclusively as a complex shock filter. In the case where $f_1=0$ and $f_2=1$ it correspond to an edge enhancement filter by using the classic shock filter. Elsewhere, it corresponds to a mix of both.

Despite the originality of complex shock filter and its evolutions, the main drawback of this techniques concerns noisy images. Namely, in the presence of noise, the deblurring process creates images looking grainy a level of edges (cf. Sec. 4). In other words, edges are not straight, but rather serrated boundaries.

Structure Tensor based Approaches Shock Filter The coherence enhancing shock filter has been developed by Weickert [22] with the shock filter theory via structure tensor based approach. Thus, the corresponding PDE:

$$\frac{\partial I}{\partial t} = -\text{sign}((G_\sigma * I)_{\omega_+ \omega_+}) \cdot |\nabla I| \quad (10)$$

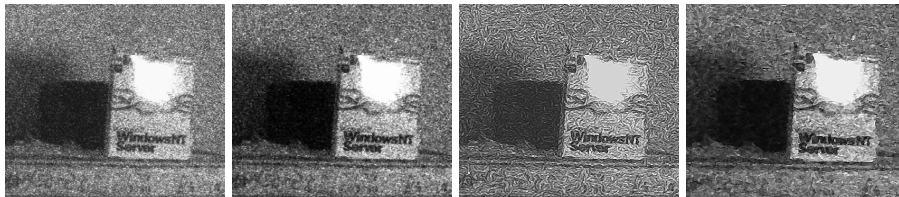
allows shock filtering along the direction of the eigenvector ω_+ corresponding to the largest eigenvalue of the structure tensor: $J_\rho(\nabla I_\sigma) = G_\rho * (\nabla I_\sigma \cdot \nabla I_\sigma^T)$, where the parameters ρ and σ represent standards deviations of the Gaussian.

Tschumperlé and Deriche proposed a different form of the diffusion shock filter coupling especially for enhancement of color images [19]. This model can be generalized to gray level images using the structure tensor:

$$\frac{\partial I}{\partial t} = \alpha \cdot (I_0 - I) + c_{\omega_-} \cdot I_{\omega_- \omega_-} + c_{\omega_+} \cdot I_{\omega_+ \omega_+} - (1 - g(\mathcal{N})) \cdot \text{sign}((G_\sigma * I)_{\omega_+ \omega_+}) \cdot |\nabla I| \quad (11)$$

where $\alpha \in \mathbb{R}_*^+$, and $c_{\omega_{+/-}}$ are two decreasing functions: $c_{\omega_-}(\mathcal{N}) = \frac{1}{\sqrt{1+\mathcal{N}^2}}$ and $c_{\omega_+}(\mathcal{N}) = \frac{1}{1+s^2}$, with $\mathcal{N} = \sqrt{\lambda_+ + \lambda_-}$. The shock is controlled by $g(\mathcal{N})$ (cf. eq. 3), where λ_+ and λ_- denote the two eigenvalues tied to the eigenvectors ω_+ and ω_- respectively, related to the tensor J_ρ .

These tensorial techniques behave like a contrast enhancing shock filter, they enhance well strip structures as in Fig. 6(c), however they create artificial lines or may engender an undesirable grainy effect around edges when dealing with highly noisy images, see Fig. 1(c). Notwithstanding a long-term and large scientific effort for PDE-based methods, a satisfactory solution has not been found yet.



(a) Noisy image (b) Fu filter [5] (c) Weickert [22] (d) Eq. 17

Fig. 1. Restoration of a real highly noisy image.

3 A New Half Kernel based Shock Filter

As stated in the methods above, image derivatives ($I_{\xi\xi}, I_{\eta\eta}$), and the gradient are crucial information for the image enhancement via PDEs. The more these features are accurate and robust against noise, the more the diffusion process is efficient. This section presents an oriented half kernels-based technique which enables a gradient computation and an estimation of edge directions modulo 2π . Thereafter, these components are useful for the creation of image derivatives and represent fundamental information tuning the proposed PDE.

3.1 Derivative Half Gaussian Kernels

Gaussian kernels are used in a large part of Shock filter for their efficiency in edge detection. Nevertheless weaknesses can be noticed at level of corners and small objects present in the image (as stated above about shock filters involving Gaussians). Edge detection techniques using elongated kernels are efficient at detecting large linear structures correctly [18], but small structures are considered to be noise and their edges are not extracted. Consequently, the accuracy of the detected edge points decreases strongly at corner points and for non-straight object contour parts. To bypass this undesirable effect, an anisotropic edge detection method is developed in [14] and deeper evaluated in [10]. Indeed, the proposed technique is able to detect crossing edges and corners due to two elongated and oriented filters in two different directions. The main idea is to “cut” the anisotropic Gaussian kernel using a Heaviside function (see Fig. 2(c)). The half kernel (HK) can be implemented using Gaussian and its first derivative:

- a half smoothing part: $\mathcal{G}(s) = H(s) \cdot e^{-\frac{s^2}{2\mu^2}}$, with H the Heaviside function,
- a derivative part of the filter: $\mathcal{G}_1(s) = s \cdot e^{-\frac{s^2}{2\sigma^2}}$, with $\sigma, \mu \in \mathbb{R}_+^*$ and $s \in \mathbb{R}$.

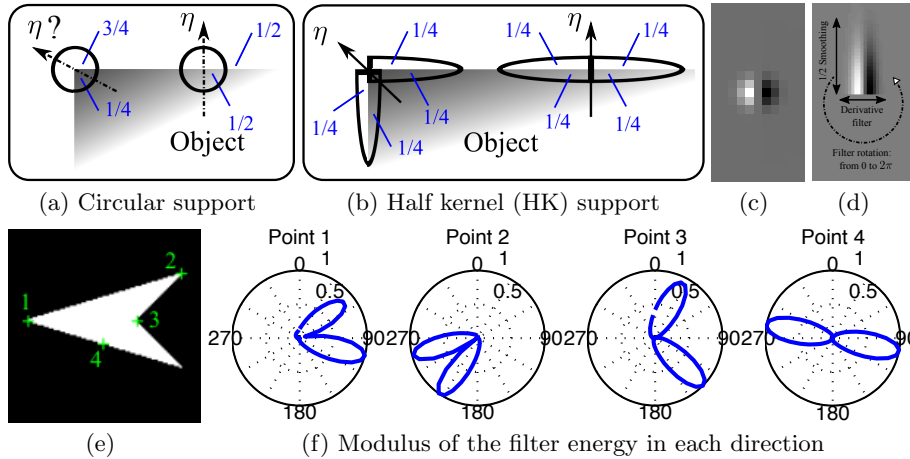


Fig. 2. Representation of filter supports concerning edges and corners. (c) Derivative Gaussian kernel. (d) 2D half kernel. (d) Selection of points before applying the HK_θ .

For signal and image processing, s belongs to integers. Fig. 2(d) shows an example of a HK, built with the two function \mathcal{G}_1 at the horizontal and \mathcal{G} at the vertical respectively. In order to create an elongated filter, the support of the half smoothing part must be higher than the derivative support i.e., $\mu > \sigma$. Then, the HK is rotated in several directions θ from 0 to 2π (bilinear rotation) to obtain a rotated version of the filter HK_θ . The convolution of the image I with HK_θ (i.e., $I * HK_\theta$) allows to compute a derivative information at each desired angle (illustrated in Fig. 2(e)-(f)). In order to better understand this technique to extract edge, the filter support of a HK on a straight contour is equivalent to 1/2 on both sides of the edge, illustrated in Fig. 2(b). On the contrary, for a corner point with a $\pi/2$ radian angle, the support of the half filter remains 1/2 on both sides of the edge, whereas it is around 1/4 and 3/4 concerning other filter supports [10](cf. Fig. 2(a)). Eventually, HK corresponds to an oriented filter derivative, so its responses are either positive, or negative. For each pixel of coordinates (x, y) , the gradient $|\nabla I|$ corresponds to the maximum value minus the minimum value of $I * HK_\theta$ among all the θ directions:

$$\left\{ \begin{array}{l} |\nabla I|(x, y) = \max_{\theta \in [0, 2\pi]} [I * HK_\theta(x, y)] - \min_{\theta \in [0, 2\pi]} [I * HK_\theta(x, y)] \\ \theta_1(x, y) = \operatorname{argmax}_{\theta \in [0, 2\pi]} [I * HK_\theta(x, y)] \\ \theta_2(x, y) = \operatorname{argmin}_{\theta \in [0, 2\pi]} [I * HK_\theta(x, y)] \\ \eta(x, y) = \frac{\theta_1 + \theta_2}{2} \\ \beta(x, y) = \begin{cases} |\theta_1(x, y) - \theta_2(x, y)|, & \text{if } |\theta_1(x, y) - \theta_2(x, y)| \leq \pi \\ 2\pi - |\theta_1(x, y) - \theta_2(x, y)| & \text{elsewhere.} \end{cases} \end{array} \right. \quad (12)$$

Note that the matlab code of the HK is available on mathworks website [11], involving different HK filters. Once $|\nabla I|$, θ_1 and θ_2 have been obtained, η corresponds to the gradient orientation i.e., to the bisector between these two directions, thus the oriented second derivative $I_{\eta\eta}$ may be created (Fig. 3(d)). Also, as represented in Fig. 4(c), β denotes the angle formed by θ_1 and θ_2 , corresponding to an angular sector. These directions are useful and efficient for image restoration via PDE [13], corner detection [1] or image descriptor [20]. All these entities computed via eq. 12 are required for the proposed shock filter PDE.

3.2 Diffusion using Directions of Half Gaussian Kernels

Diffusion along Directions of Edges: PDE-based methods are a mature technique. Therefore, PDE-based image regularization techniques using gradient intensities or tensorial diffusion smooth the image either both in the directions of edges ξ or ω_- and gradient direction η or ω_+ . This process is doable by combining the current diffused image with oriented second derivative of the image ($I_{\xi\xi}$ and $I_{\eta\eta}$, see PDE in Section 2). However, all these approaches do not take the two directions of edges into account, for example at a level of a corner.

Similar to the curvature equation $I_{\xi\xi}$, the original idea developed in [12] is to smooth anisotropically at level of edges in two diffusion directions θ_1 and θ_2 :

$$\frac{\partial I}{\partial t} = \frac{\partial^2 I}{\partial \theta_1 \partial \theta_2} = I_{\theta_1 \theta_2}. \quad (13)$$

In [12], the two directions necessary for the diffusion are not computed by derivative half Gaussian kernels, only the diffusion process imports here. Indeed,

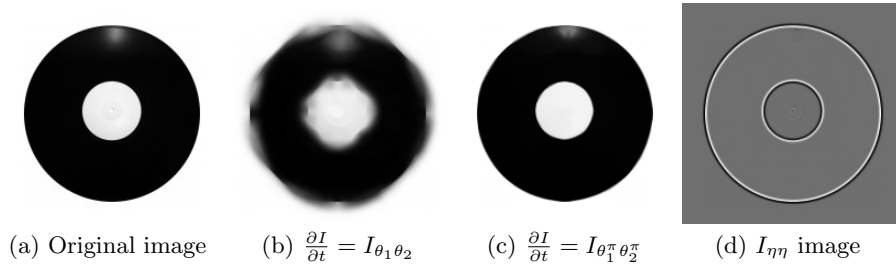


Fig. 3. A diffusion along θ_1 and θ_2 directions creates a blur effect around edges.

contrary to previous methods, $I_{\theta_1\theta_2}$ is computed by interpolations in the θ_1 and θ_2 directions, from 0 to 2π , with one and only one direction for each angle. As illustrated in Fig. 4(e), for each pixel, the smoothing is doable in 3×3 mask with the two pixels interpolated by the unweighted average in the desired directions. Yet, applying this PDE in an image using θ_1 and θ_2 issued from eq. 12 is not stable and $I_{\theta_1\theta_2}$ creates an effect of dilation/erosion close to edge points, because θ_1 and θ_2 are not well directed. Fig. 3(b) illustrates this undesirable effect.

A Mirror Rotation in order to Enhance the Diffusion: The PDE presented in eq. 13 may be controlled by the gradient magnitude, for example, but an undetermined quantity of blur will be created. Consequently, instead of diffusing alongside the directions θ_1 and θ_2 , it was proposed in [15] to diffuse in the opposite directions, i.e., the directions $\theta_1^\pi = \theta_1 - \pi$ and $\theta_2^\pi = \theta_2 - \pi$. Fig. 4 illustrates these modifications where β keeps the same value. The new diffusion PDE becomes:

$$\frac{\partial I}{\partial t} = \frac{\partial^2 I}{\partial \theta_1^\pi \partial \theta_2^\pi} = I_{\theta_1^\pi \theta_2^\pi}. \quad (14)$$

Simply by a mirror effect, this diffusion offers a better preservation than the original as seen in Fig. 3(c), after many iterations without any control (!). Using the original diffusion the white pixels near the border are attracted by the color of the border which causes the appearance of grey blotches. By inverting the direction of the diffusion, those pixels are not attracted anymore and the disk is preserved, while few pixel of noise have disappeared in the middle of the image. The purpose of getting a stable PDE is to control the diffusion of eq. 14 before developing a new combination with a shock filter scheme.

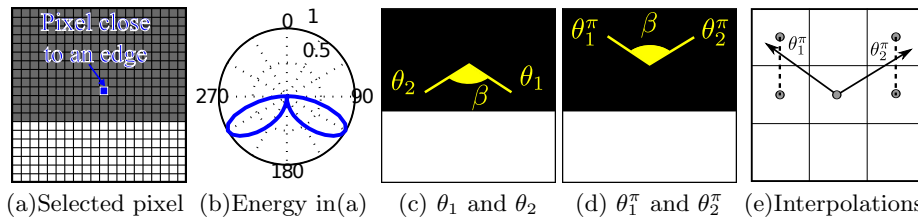


Fig. 4. Mirror rotation of θ_1 and θ_2 directions to avoid a blurring effect in the diffusion process. (a): Pixel close to an edge. (b-c): Diffusion directions for the selected point. (e) Interpolations

A Diffusion Tuned by the Gradient and the Directions of Edges: The presented schemes in eqs. 13 and 14 do not control the diffusion, they correspond to linear models. In other words, the pixel intensities are propagated involving interpolations along (θ_1, θ_2) or $(\theta_1^\pi, \theta_2^\pi)$ directions with a constant speed (cf. Fig. 4(e)). In order to avoid an over-smoothing of important parts of the image, as edges and corners, the diffusion must be nonlinear. There are many existing nonlinear models to smooth and restore images via PDEs [17,7,2,19,13]. The main idea is to smooth extensively inside homogeneous regions, whereas edges must be enhanced. The g function in eq. 3 represents a good manner to tune the diffusion depending on gradient modulus. Inspired by the model developed in [13], a control function is proposed here to decrease the diffusion both at edge and corner points (when the angle between θ_1^π and θ_2^π is not open: $\beta < \pi$):

$$C_{(k,h)}(|\nabla I|, \beta) = \frac{1}{2} \cdot e^{-\left(\frac{|\nabla I|}{k}\right)^2} + \frac{1}{2} \cdot e^{-\left(\frac{(\pi-\beta)}{(\pi \cdot h)}\right)^2} \quad \text{with } (k, h) \in]0; 1]^2 \quad (15)$$

Thus, eq. 14 becomes:

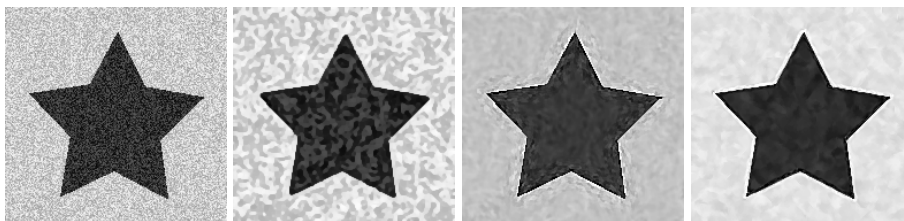
$$\frac{\partial I}{\partial t} = C_{(k,h)} \cdot I_{\theta_1^\pi \theta_2^\pi}. \quad (16)$$

The smoothing process is driven by the gradient magnitude and β . The $C_{(k,h)}$ function ensures the diffusion preserving edges and corners and enables an extensive smoothing inside homogeneous regions. In case of a small gradient and a β angle close to π , the considered pixel will be largely diffused. If the gradient is important and the β angle is small, smoothing is weak and preserves boundaries.

A New Shock Filter Scheme: As stated in section 2, corner rounding is the main weakness of the shock filter. To correct this problem a control function is inserted for the shock filter term, inversely to the control of $I_{\theta_1^\pi \theta_2^\pi}$. Thus, eq. 16 evolves into:

$$\frac{\partial I}{\partial t} = C_{(k,h)} \cdot I_{\theta_1^\pi \theta_2^\pi} - (1 - C_{(k,h)}) \cdot \text{sign}(I_{\eta\eta}). \quad (17)$$

Consequently, the smoothing process and the shock are both tuned by $C_{(k,h)}$. When $|\nabla I| \approx 0$, it corresponds to homogeneous regions, $C_{(k,h)} \rightarrow 1$, and shock term does not work. If β is a close angle and the gradient is weak, the process must smooth this region; it is doable when $k > h$ in eq.16. When $|\nabla I| \approx 1$, it refers to pixels of (or close to) contours, $C_{(k,h)} \rightarrow 0$, thus edges are enhanced. Fig.5(d) illustrates the enhancement of an image containing corners (with $k=0.1$, $h=0.05$).



(a) Noisy image (b) AM filter [3] (c) Tschumperlé [19] (d) Eq. 17

Fig. 5. Image restoration. For (b), $\sigma=1$, (c) $\sigma=1$, $\rho=3$ and (d) $\sigma=1$, $\mu=3$.

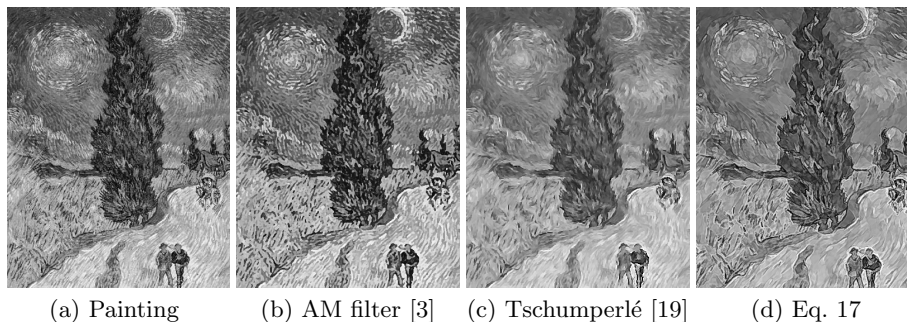


Fig. 6. Comparison of several PDE schemes on a picture of Vincent van Gogh paint. For (b), $\sigma=1$, (c) $\sigma=1$, $\rho=3$ and (d) $\sigma=1$, $\mu=3$.

4 Experimental Results

Several application results of the proposed PDE are presented in this section. These results are compared to the different approaches described above. The parameters used for all the methods are also detailed. As far as the evaluation process is concerned, the Structural Similarity Index Measure (SSIM) [21] is reported and plotted as a function of the number of iterations for each method.

The parameters for the half kernels are $\sigma=1$ for the derivative and $\mu=3$ for the smoothing during all the experiments. Such a set of parameters enables an enhancement of small objects and thin structures. With the enlargement of these two parameters, the scale effect will lead only to the enhancement of the large structures or dominant edges. The first result presented in Fig. 5 shows the behavior of the proposed PDE method with an image containing pointed corners. Even though the original image does not contain blur, edges remain sharp after 50 iterations whereas the noise disappears completely. For the second original image in Fig. 6, stripes are created by a brush on a painting. This result is somewhat reminiscent of tensorial approaches [22,19] After 50 iterations, results depict the coherence of the proposed PDE scheme because the lineaments, trees and characters are preserved and enhanced. With the same number of iterations, boundaries in the image presented in Fig. 1 are well enhanced while corners are highly improved, as detailed in Figs. 7(b) and (d).

To shed light on the effectiveness of the proposed shock filter, two tested images are noised by adding random Gaussian noise and blurred using a convolution with a Gaussian of standard deviation of $\sigma = 1$, cf. Figs. 8(a)-(b) and 9(a)-(b). Then they are independently treated by Perona-Malik (PM), Alvarez-Mazorra

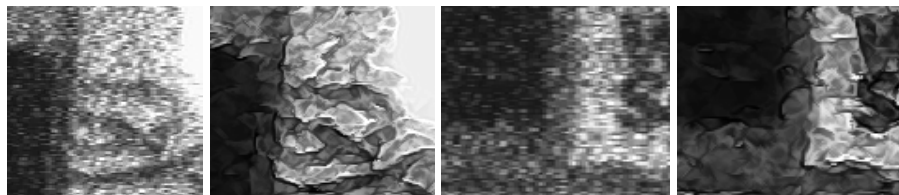


Fig. 7. Enlargement of parts extracted from images (a) -left- and (d) -right- in Fig. 1.

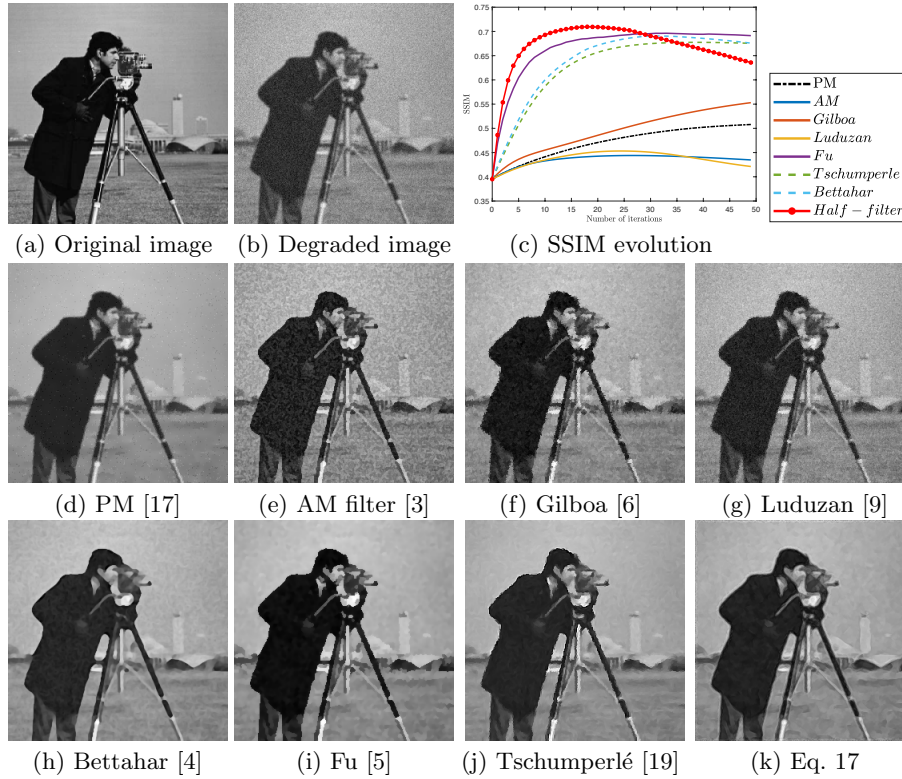


Fig. 8. Restoration a blurred ($\sigma = 1$) and noisy image, 272×272 , in (b), $\text{SNR}=13.1\text{dB}$.

(AM), Gilboa, Luduzan, Fu, Tschumperlé and Bettahar methods. The parameters for methods involving Gaussians is $\sigma=1$ and $\rho=3$ for tensorial PDEs. For complex shock filters, $\theta=0.001$, $a=2$ and $\hat{\lambda}=\lambda=0.1$. In order to compare objective performance of these approaches, the SSIM is calculated for each iteration; presented images are tied to the best score of the measure. As shown in Figs. 8(c) and 9(c), the SSIM curve of the proposed scheme is above the others (called Half-filter), translating a better image enhancement than other PDE methods. The degraded images contain a strong noise and small objects have to be restored. As an example, the gray structure in the middle of the tripod in Figs. 8(a) is well enhanced by the new filter. Indeed, this object is recognizable and realistic, contours are straight. Details are also enhanced like the camera and the cameraman's lock of hair. Finally, by using the new PDE, the corners and edges of Fig. 9(b) are well deblurred, without creating a grainy effect around edges.

5 Conclusion

A new shock-filter for digital image enhancement has been presented in this paper. The principal characteristic of this filter is the use of half Gaussian kernels to detect a gradient modulus. This kind of kernels allows the filter to detect corners

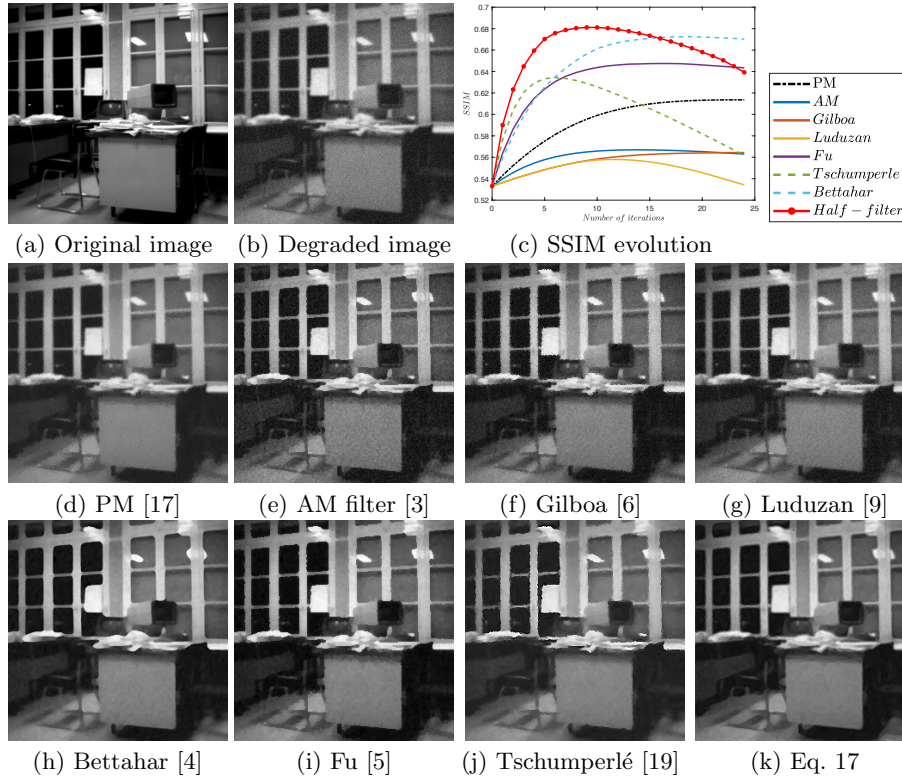


Fig. 9. Restoration a blurred ($\sigma = 1$) and noisy image, 256×256 , in (b), $\text{SNR}=13.53\text{dB}$.

and their associated directions with accuracy. Furthermore, the shock-diffusion strategy depends on the value of the gradient modulus and the two directions of the estimated edges. By applying a mirror rotation of these directions, a new diffusion process via PDE is proposed and improves the shock-filter efficiency. Experiments on blurred and noisy images show the efficiency in removing blur and noise while enhancing important features like edges and also corners or small objects. The presented experimental results and images resulting of this PDE tied to the best score of the SSIM illustrates the relevance of the proposed image enhancement method. Future works will include automatic diffusion that would lead to an unsupervised restoration. In other words, it constrains to stop the PDE after a number of iterations allowing the enhancement of an image. This is doable by learning or statistic approaches estimating the level of noise and blur before the first iteration. On the other hand, an unsupervised measure (for example a method estimating if flat regions are really flat) on the restoration level may be useful to stop the diffusion process. The adaptation of the proposed method to color image enhancement remains a challenge without creating color artifacts, several manners must be explored for the diffusion process and overall the deblurring process. Eventually, this paper is not a breakthrough, but it adds some contribution, since it devotes an attention to the diffusion directions.

References

1. Abdulrahman, H., Magnier, B., and Montesinos, P.: Oriented asymmetric kernels for corner detection. In: IEEE EUSIPCO, pp. 778–782, (2017)
2. Aubert, G. and Kornprobst, P.: Mathematical problems in image processing: partial differential equations and the calculus of variations, vol. 147, Springer-Verlag, (2006)
3. Alvarez, L. and Mazorra, L.: Signal and image restoration using shock filters and anisotropic diffusion. In: SIAM J. Numer. Anal. 31(2), pp. 590–605, (1994)
4. Bettahar, S., Lambert, P., Stambouli, A., B.: Anisotropic color image denoising and sharpening. In IEEE ICIP, pp. 2669–2673, (2014)
5. Fu, S., Ruan, Q., Wang, W. and Chen, J.: Region-based shock-diffusion equation for adaptive image enhancement, In: Advances in Machine Vision, Image Processing, and Pattern Analysis, Springer, pp. 387–395, (2006)
6. Gilboa, G., Sochen, A. and Zeevi, Y.: Regularized Shock Filters and Complex Diffusion. IEEE ECCV, Part I, pp. 399–413, (2002)
7. Guichard, F., Moisan, L. and Morel, J-M.: A review of PDE models in image processing and image analysis. Journal de Physique IV, 12(1), pp. 137–154, (2002)
8. Kornprobst, P., Deriche, R. and Aubert, G. : Image coupling, restoration and enhancement via PDE’s. In: IEEE ICIP, pp. 458–46 (1997)
9. Luduzan, C., Lavialle, O., Terebes, R. and Borda, M.: Morphological Sharpening and Denoising Using a Novel Shock Filter Model. In: ICISP, pp. 19–27, (2010)
10. Magnier, B.: An Objective Evaluation of Edge Detection Methods based on Oriented Half Kernels. In: ICISP, pp. 80–89, (2018)
11. Magnier, B.: Matlab code of "Edge detection methods based on oriented half kernels": https://fr.mathworks.com/matlabcentral/fileexchange/66853-edge-detection-methods-based-on-oriented-half-kernels?s_tid=srchtitle
12. Magnier, B., Montesinos, P., and Diep, D.: Texture removal by pixel classification using a rotating filter. In: IEEE ICASSP, pp. 1097–1100, (2011)
13. Magnier, B. and Montesinos, P.: Evolution of image regularization with PDEs toward a new anisotropic smoothing based on half kernels. In IS&T/SPIE Elec. Imaging, International Society for Optics and Photonics, pp. 86550M–86550M, (2013)
14. Montesinos, P. and Magnier, B.: A new perceptual edge detector in color images. In: ACIVS, Springer, Berlin, Heidelberg, pp. 209–220, (2010)
15. Montesinos, P. and Magnier, B.: Des filtres anisotropes causaux pour une diffusion non contrôlées. In: GRETSI, (2017)
16. Osher, S. and Rudin, L.I.: Feature-oriented image enhancement using shock filters. In: SIAM J. Numer. Anal. 27(4), 919–940. [ISSN 0036-1429], (1990)
17. Perona, P. and Malik, J.: Scale-space and edge detection using anisotropic diffusion. In IEEE TPAMI, 12, pp. 629–639, (1990)
18. Püspöki, Z., Martin, S., Sage, D. and Unser, M.: Transforms and operators for directional bioimage analysis: a survey. In: Focus on Bio-Image Informatics, Springer, pp. 69–93, (2016)
19. Tschumperlé, D. and Deriche, R. : Diffusion PDE’s on vector-valued images: local approach and geometric viewpoint. In IEEE Signal Processing Magazine, 19(5), pp. 16–25, (2002)
20. Venkatrayappa, D., Montesinos, P., Diep, D., and Magnier, B.: A Novel Image Descriptor Based on Anisotropic Filtering. In CAIP, Springer, pp. 161–173, (2015)
21. Wang, Z., Bovik, A., Sheikh, H. and Simoncelli, E.: Image quality assessment: from error visibility to structural similarity. In IEEE TIP, 13(4), pp. 600–612, (2004)
22. Weickert, J.: Coherence-enhancing shock filters. In: LNCS, pp. 1–8, (2003)