



**HAL**  
open science

## Analysing Mesoporous Thin Films Electrodes by Glancing-Incidence XRD-Application to Photorechargeable Li-ion Batteries

Olivier Nguyen, Natacha Krins, Gianguido Baldinozzi, Christel  
Laberty-Robert

► **To cite this version:**

Olivier Nguyen, Natacha Krins, Gianguido Baldinozzi, Christel Laberty-Robert. Analysing Mesoporous Thin Films Electrodes by Glancing-Incidence XRD-Application to Photorechargeable Li-ion Batteries. MRS Spring Meeting 2018. Symposium CM03 : Investigating Nanostructures with X-Rays-Fundamentals and Applications, Apr 2018, Phoenix, United States. 2018. hal-01929663

**HAL Id: hal-01929663**

**<https://hal.science/hal-01929663>**

Submitted on 21 Nov 2018

**HAL** is a multi-disciplinary open access archive for the deposit and dissemination of scientific research documents, whether they are published or not. The documents may come from teaching and research institutions in France or abroad, or from public or private research centers.

L'archive ouverte pluridisciplinaire **HAL**, est destinée au dépôt et à la diffusion de documents scientifiques de niveau recherche, publiés ou non, émanant des établissements d'enseignement et de recherche français ou étrangers, des laboratoires publics ou privés.



## Outline

Photo-rechargeable lithium-ion batteries, which are able to both harvest and store solar energy within electrodes, are a promising technology for a more efficient use of intermittent solar radiation [1]. However, there is a lack of understanding on how the light-induced lithium extraction reaction occurs within the electrode host lattice. In fact, this technology is based on bifunctional nanostructured electrodes, which undergo simultaneous complex modifications: structural reorganization through lithium-ion insertion and photo-excited charges creation through solar illumination.

In order to get more insight on the mechanism governing the photo-recharge of a single device based on a TiO<sub>2</sub> thin film electrode made of mesoporous anatase, we perform ex-situ glancing-incidence XRD experiments. Using laboratory glancing incidence diffraction, and implementing proper corrections for the instrumental broadening of this diffraction geometry in the Rietveld refinement software XND, it was possible to extract quantitative information about the structure (lattice, strain, and atomic positions) and the microstructure (crystallite size and micro-strain), selectively probing the material on a depth of few nanometers.

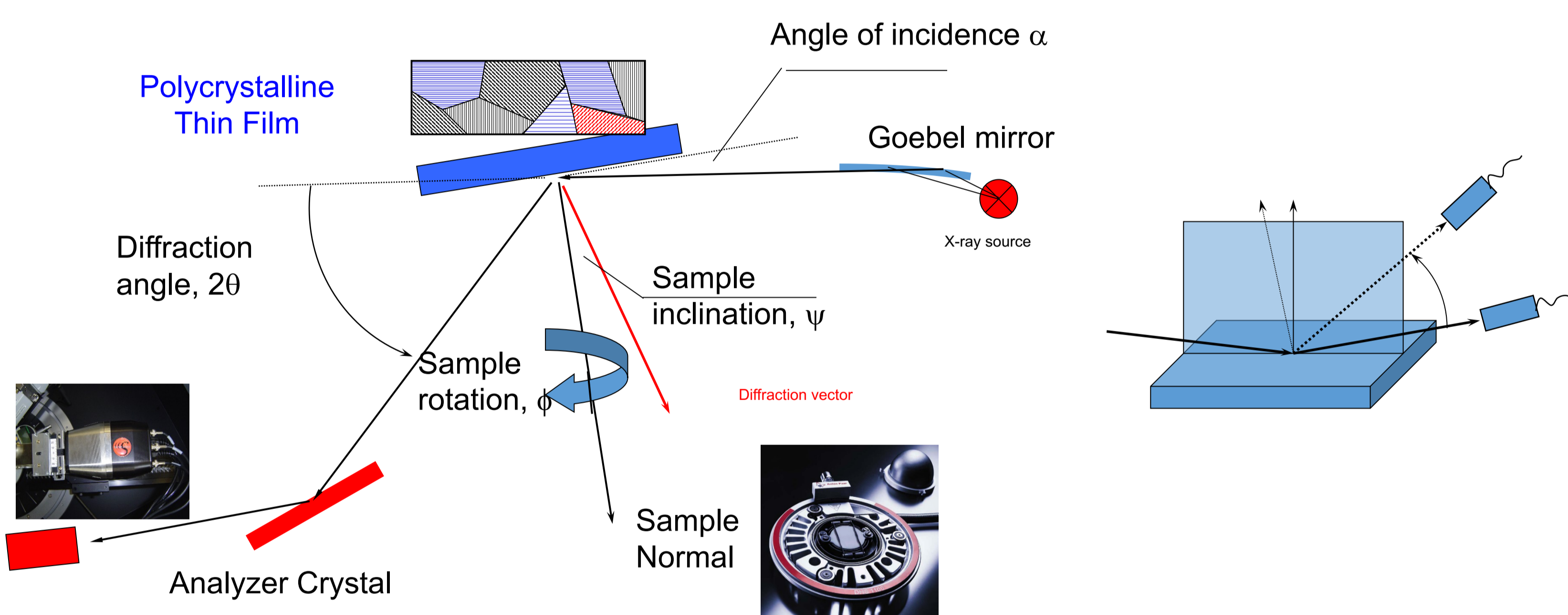
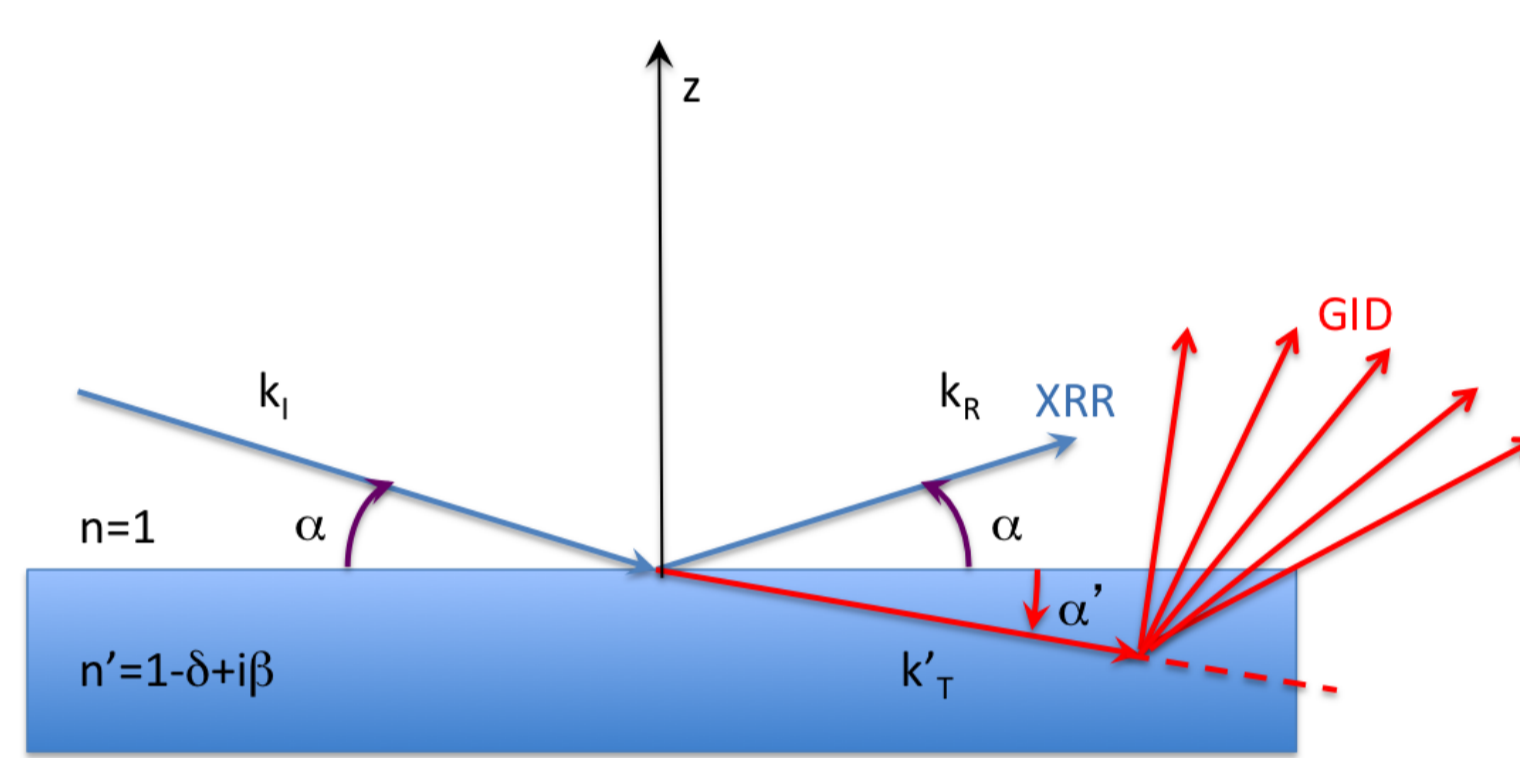
## Glancing Incidence XRD [2]

$$\begin{cases} n \cos \alpha' = \cos \alpha \\ (a_i + a_r) n \sin \alpha' = (a_i - a_r) \sin \alpha \end{cases}$$

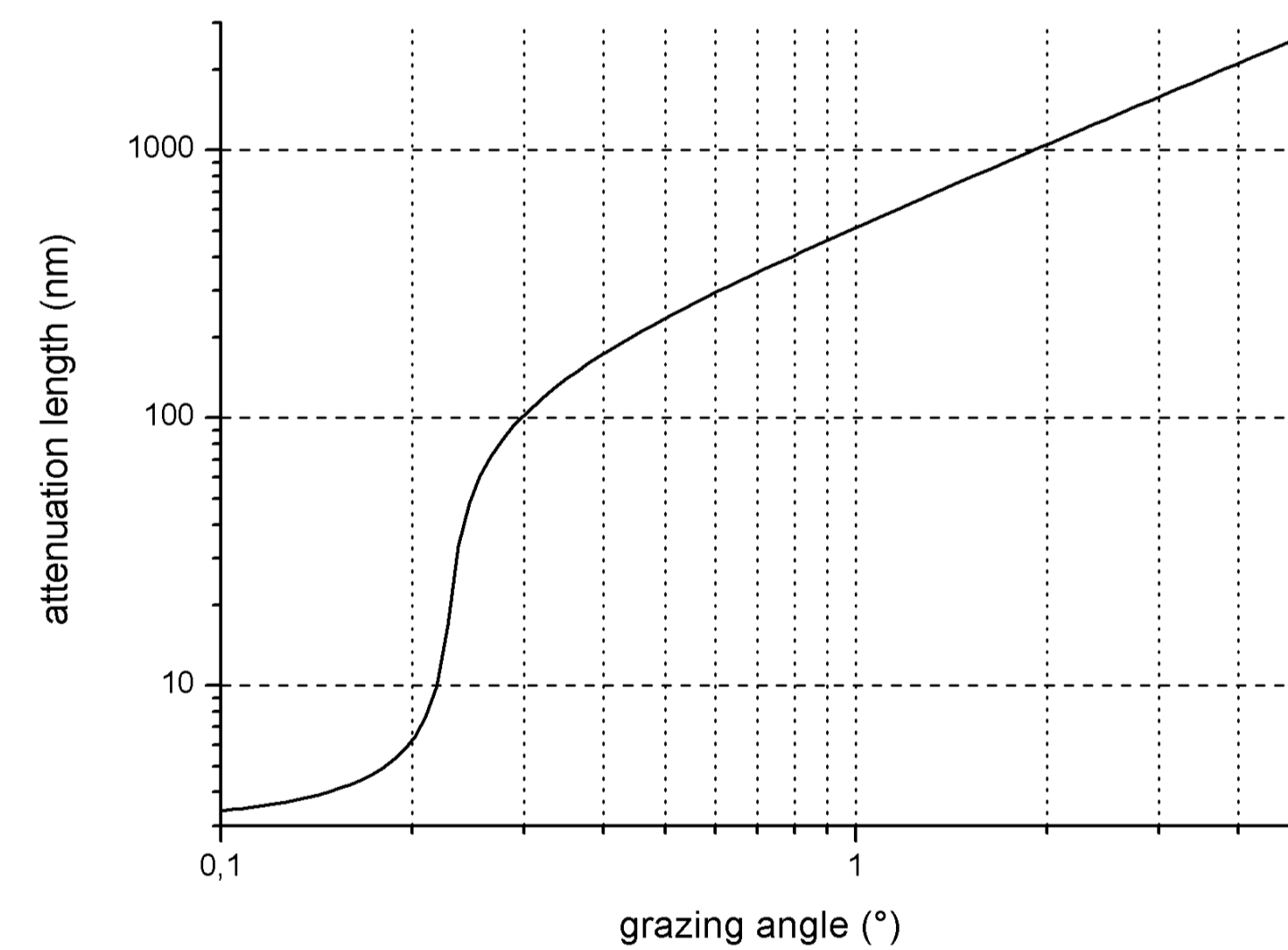
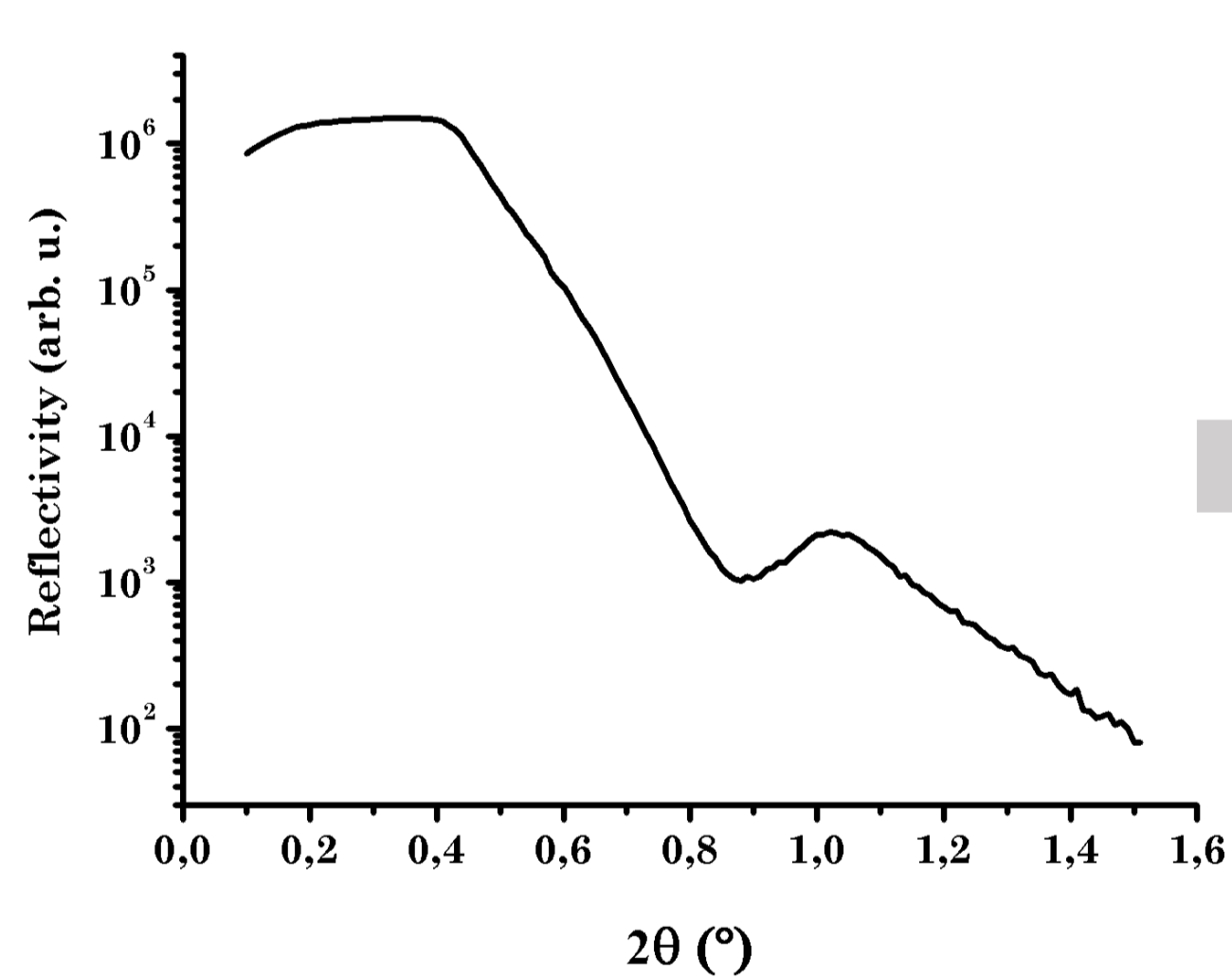
$$n = 1 - \delta + i\beta \approx 1 - \frac{\alpha_c^2}{2} + i\beta; \alpha_c^2 \equiv \left(\frac{4\pi}{k^2}\right) \rho; \beta = \frac{\mu}{2k}$$

$$\begin{cases} \left(1 - \frac{\alpha_c^2}{2} + i\beta\right) \left(1 - \frac{\alpha'^2}{2}\right) = \left(1 - \frac{\alpha^2}{2}\right) \rightarrow \alpha'^2 = \alpha^2 - \alpha_c^2 + 2i\beta \\ \left(1 + \frac{a_r}{a_i}\right) \alpha' = \left(1 - \frac{a_r}{a_i}\right) \alpha \rightarrow R \equiv \frac{a_r}{a_i} = \frac{\alpha - \alpha'}{\alpha + \alpha'} \end{cases}$$

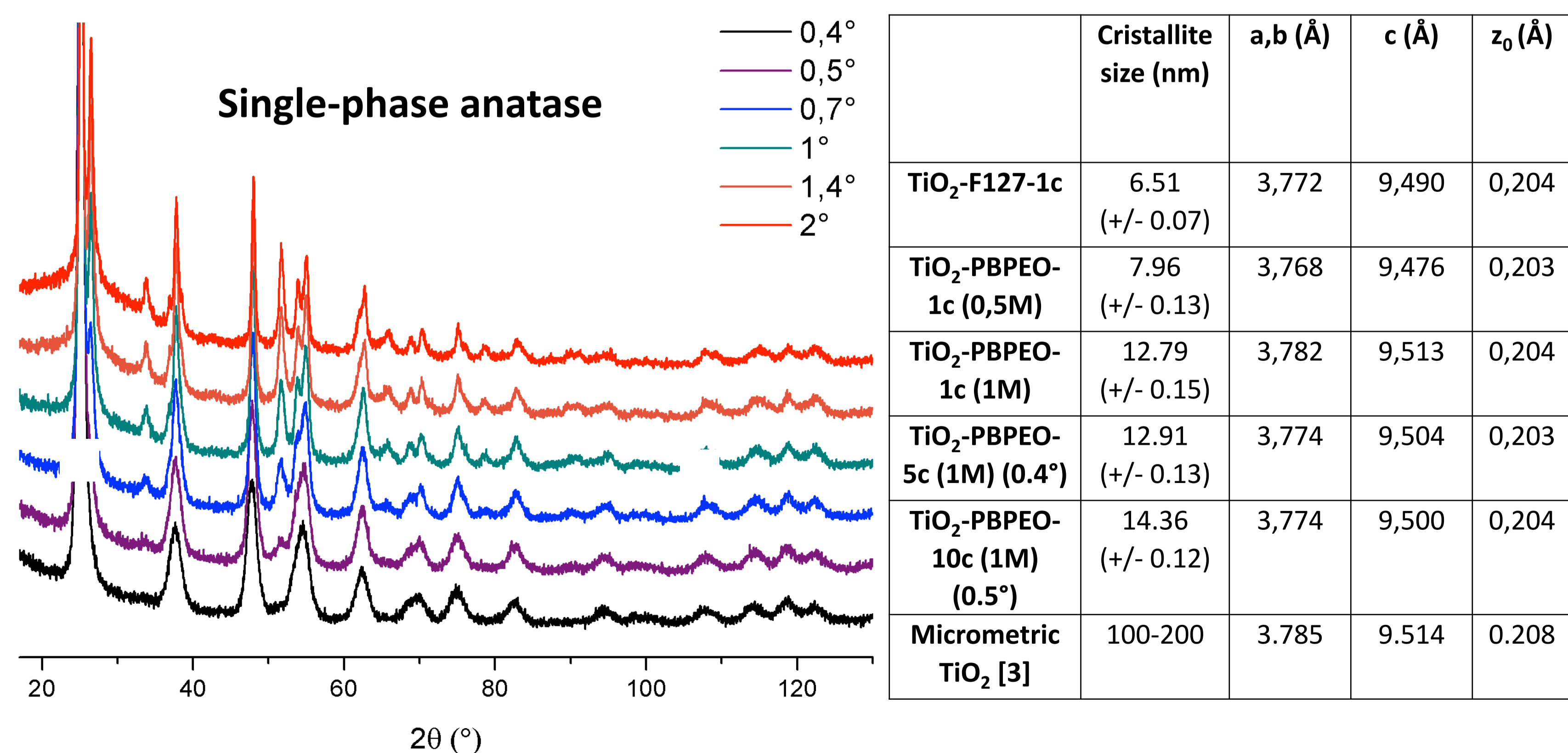
### Snell, Fresnel and XRD



## Mesoporous TiO<sub>2</sub> Anatase thin film dipped on FTO/glass



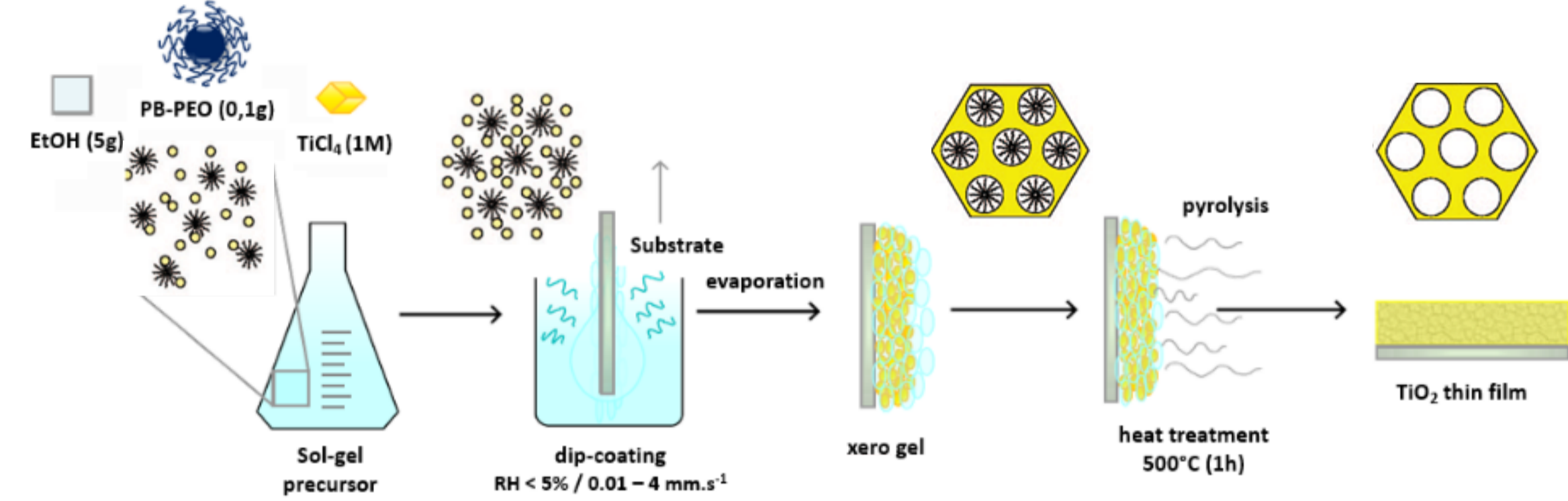
## Single-phase anatase



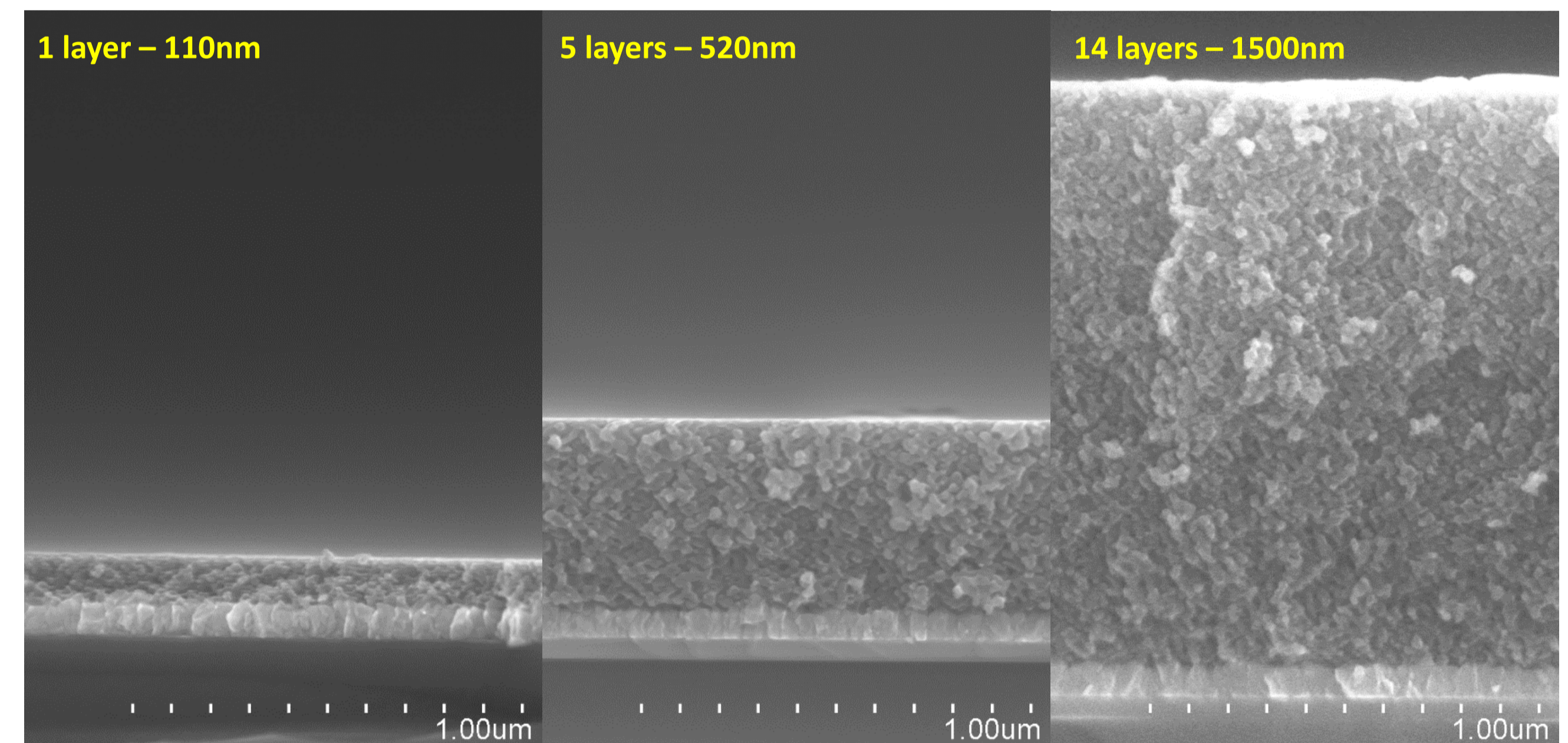
## Conclusion

- The characteristics of architected mesoporous TiO<sub>2</sub> thin films, produced by dip-coating on a FTO/glass substrate, can be studied across their thickness.
- Probing the films at multiple glancing angles shows evidence of single-phase nanocrystalline anatase with a same structure and microstructure across the entire film thickness, a result in very good correlation with SEM-FEG and TEM analyses that involve the destruction of the sample.

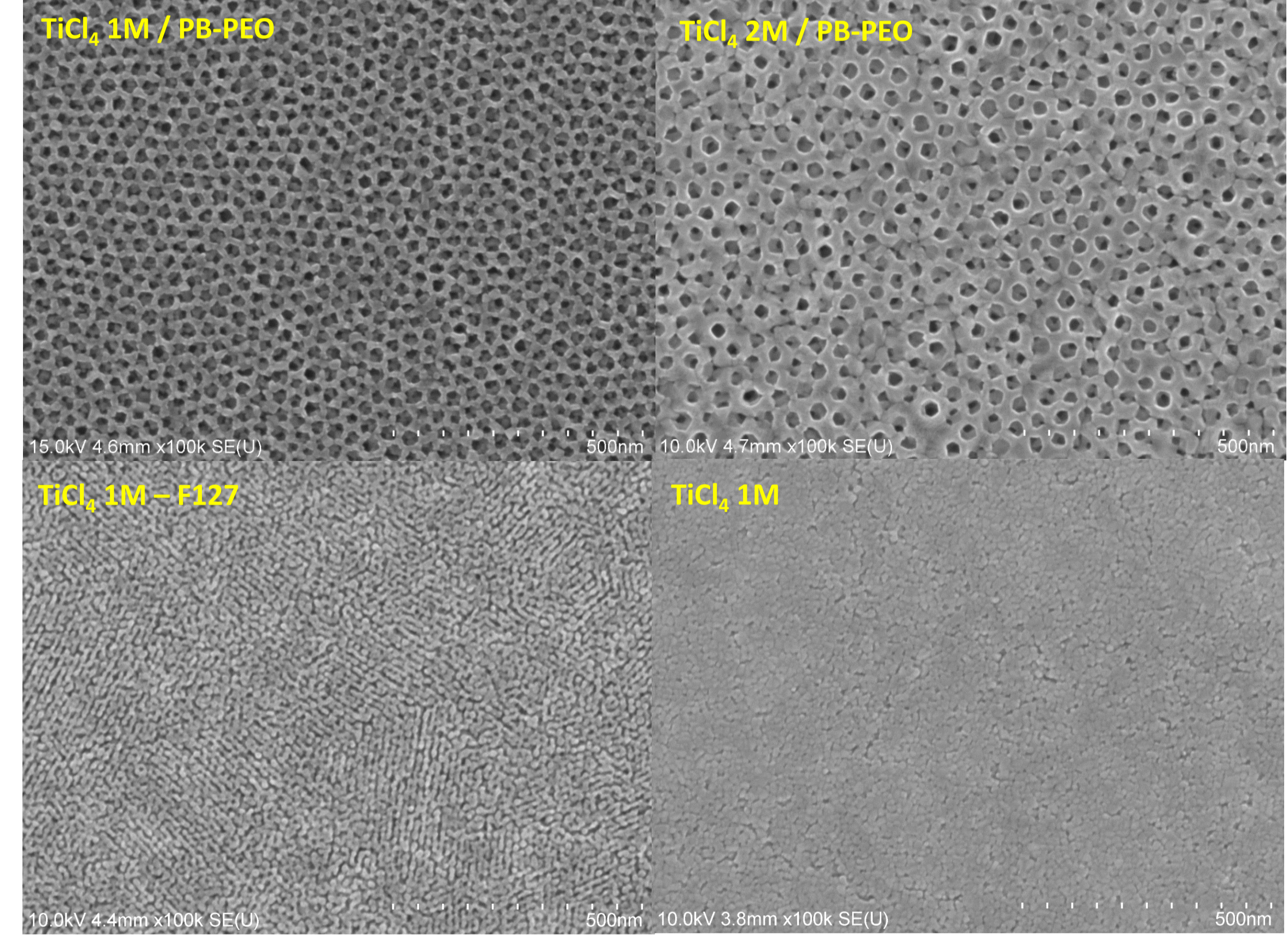
## Thin Film Electrode Synthesis



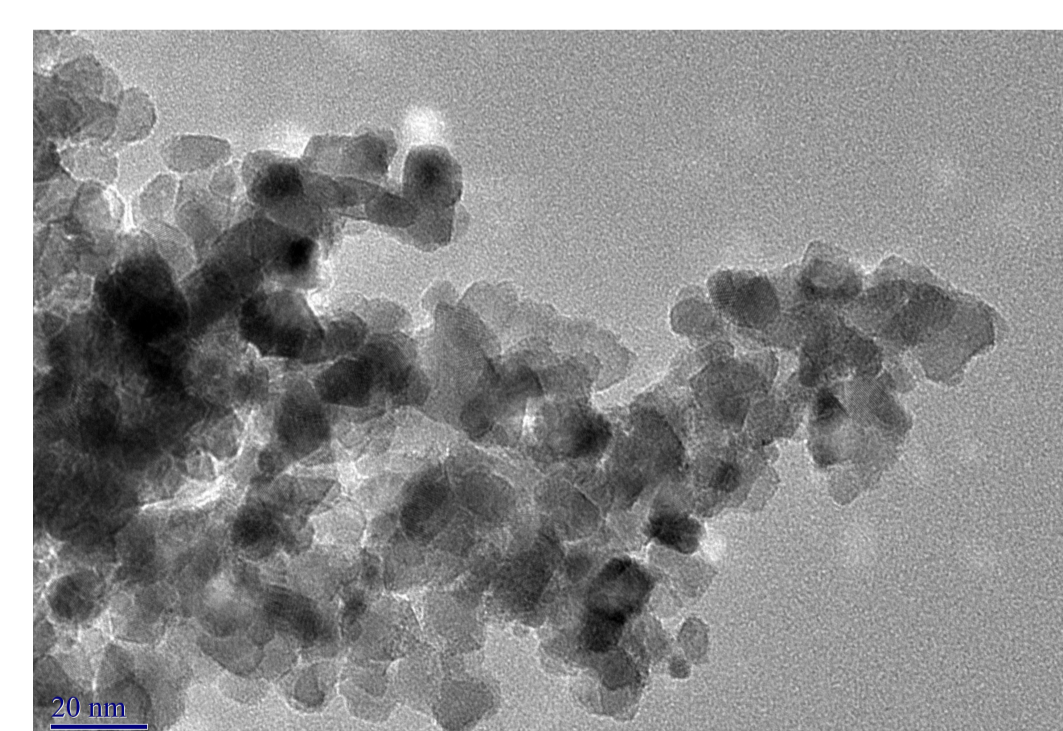
## Tunable Electrode Architecture



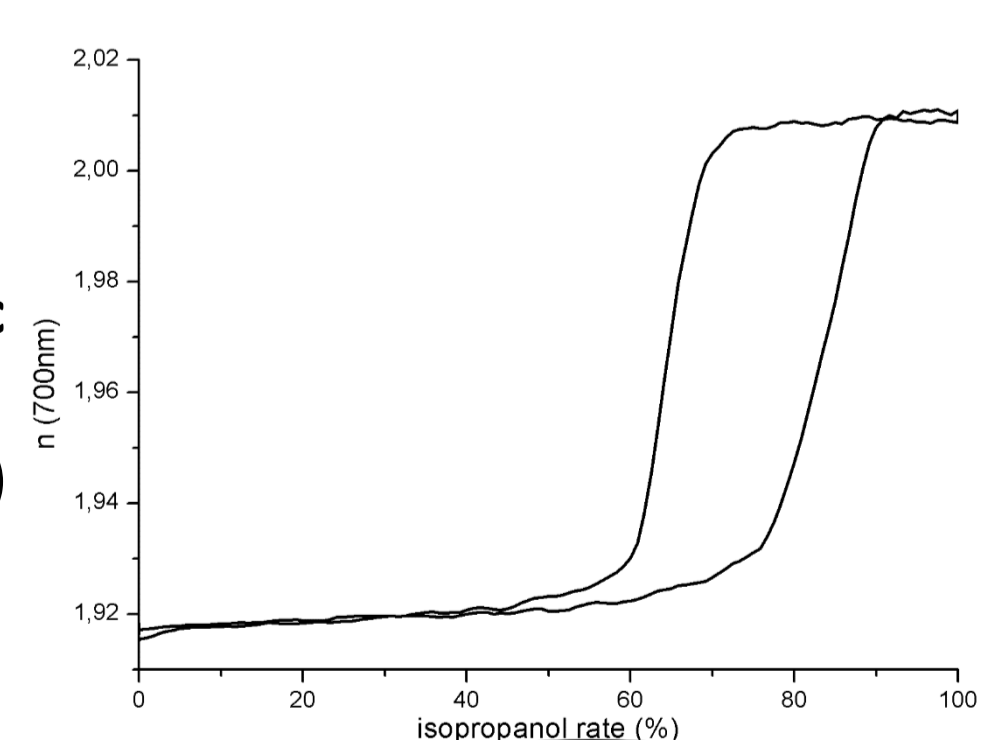
SEM FEG



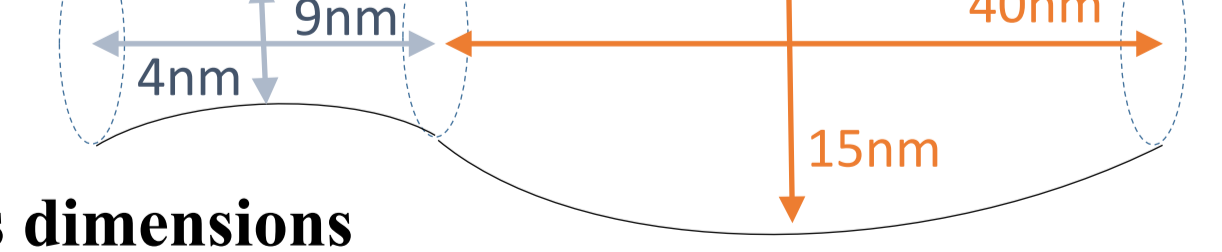
TEM



Ellipsometry porosimetry (Isopropanol)



Pores dimensions



## References

- O. Nguyen, E. Courtin, F. Sauvage, N. Krins, C. Sanchez and C. Laberty-Robert, J. Mater. Chem. A, (2017), 5, 5927–5933.
- D. Simeone, G. Baldinozzi, D. Gosset, G. Zalczer and J. F. Béar Journal of Applied Crystallography, (2011) 44, 1205–1210
- C. J. Howard, T. M. Sabine, F. Dickson, Acta Cryst. (1991). B47, 462-468

## Acknowledgements

Elisa Bindini, Cédric Boissière (LCMP, UPMC) Env. Ellipsometry Porosimetry  
David Montero (IMP, UPMC) – SEM-FEG