



Full in-frame exon 3 skipping of BRCA2 confers high risk of breast and/or ovarian cancer

Sandrine Caputo, Mélanie Léoné, Francesca Damiola, Asa Ehlen, Aura Carreira, Pascaline Gaidrat, Alexandra Martins, Rita Brandão, Ana Peixoto, Ana Vega, et al.

► To cite this version:

Sandrine Caputo, Mélanie Léoné, Francesca Damiola, Asa Ehlen, Aura Carreira, et al.. Full in-frame exon 3 skipping of BRCA2 confers high risk of breast and/or ovarian cancer. *Oncotarget*, 2018, 9 (9), pp.17334-17348. 10.18632/oncotarget.24671 . hal-01928011

HAL Id: hal-01928011

<https://hal.science/hal-01928011>

Submitted on 25 Jul 2019

HAL is a multi-disciplinary open access archive for the deposit and dissemination of scientific research documents, whether they are published or not. The documents may come from teaching and research institutions in France or abroad, or from public or private research centers.

L'archive ouverte pluridisciplinaire **HAL**, est destinée au dépôt et à la diffusion de documents scientifiques de niveau recherche, publiés ou non, émanant des établissements d'enseignement et de recherche français ou étrangers, des laboratoires publics ou privés.



Distributed under a Creative Commons Attribution 4.0 International License

Full in-frame exon 3 skipping of *BRCA2* confers high risk of breast and/or ovarian cancer

Sandrine M. Caputo¹, Mélanie Léone^{2,*}, Francesca Damiola^{3,*}, Asa Ehlen^{4,5,*}, Aura Carreira^{4,5}, Pascaline Gaidrat⁶, Alexandra Martins⁶, Rita D. Brandão⁷, Ana Peixoto⁸, Ana Vega⁸, Claude Houdayer^{1,10}, Capucine Delnatte¹¹, Myriam Bronner¹², Danièle Muller¹³, Laurent Castera¹⁴, Marine Guillaud-Bataille¹⁵, Inge Søkilde¹⁶, Nancy Uhrhammer¹⁷, Sophie Demontety¹, Hélène Tubeuf^{6,24}, Gaïa Castelain⁶, French COVAR group collaborators[†], Uffe Birk Jensen¹⁸, Ambre Petitalot¹, Sophie Krieger¹⁴, Cédric Lefol¹, Virginie Moncoutier¹, Nadia Boutry-Kryza², Henriette Roed Nielsen¹⁹, Olga Sinilnikova^{2,**}, Dominique Stoppa-Lyonnet^{1,10}, Amanda B. Spurdle²⁰, Manuel R. Teixeira^{8,21,*}, Florence Coulet^{22,*}, Mads Thomassen^{23,*} and Etienne Rouleau^{1,*}

¹Institut Curie, Service de Génétique, Paris, France

²Unité Mixte de Génétique Constitutionnelle des Cancers Fréquents, Hospices Civils de Lyon/Centre Léon Bérard, Lyon, France

³Centre Léon Bérard, Lyon, France

⁴Institut Curie, PSL Research University, CNRS UMR3348, Orsay, France

⁵Université Paris Sud, Université Paris-Saclay, CNRS UMR3348, Orsay, France

⁶Inserm-U1245, UNIROUEN, Normandie University, Normandy Centre for Genomic and Personalized Medicine, Rouen, France

⁷Maastricht University, Maastricht, Netherlands

⁸Department of Genetics, Portuguese Oncology Institute, Porto, Portugal

⁹Fundación Pública Galega de Medicina Xenómica-SERGAS, Grupo de Medicina Xenómica-USC, CIBERER, IDIS, Santiago de Compostela, Spain

¹⁰Université Paris Descartes, Paris, France

¹¹Service de Génétique médicale, CHU Nantes, Nantes, France

¹²Service de Génétique, CHU Nancy Brabois, Nancy, France

¹³Laboratoire d'Oncogénétique, Centre Paul Strauss, Strasbourg, France

¹⁴Laboratoire de biologie et de génétique du cancer, CLCC François Baclesse, INSERM 1079 Centre Normand de Génomique et de Médecine Personnalisée, Caen, France

¹⁵Institut Gustave Roussy, Villejuif, France

¹⁶Section of Molecular Diagnostics, Department of Clinical Biochemistry, Aalborg University Hospital, Aalborg, Denmark

¹⁷Laboratoire de Biologie Médicale, CLCC Jean Perrin, Clermont-Ferrand, France

¹⁸Department of Clinical Genetics, Aarhus University Hospital, Aarhus, Denmark

¹⁹Department of Clinical Genetics, Vejle Hospital, Odense, Denmark

²⁰Genetics and Computational Biology Division, QIMR Berghofer Medical Research Institute, Herston, Brisbane, Australia

²¹Institute of Biomedical Sciences, University of Porto, Porto, Portugal

²²Laboratoire d'Oncogénétique et d'Angiogénétique Moléculaire, Groupe Hospitalier Pitié-Salpêtrière, Paris, France

²³Department of Clinical Genetics, Odense University Hospital, Odense, Denmark

²⁴Interactive Biosoftware, Rouen, France

* These authors have contributed equally to this work

** Deceased

[†]Members of the French COVAR Group Collaborators are listed in the Appendix

Correspondence to: Sandrine M. Caputo, **email:** sandrine.caputo@curie.fr

Keywords: *BRCA2* exon3; *PALB2*; variants; RNA splicing defects; splice donor site

ABSTRACT

Germline pathogenic variants in the *BRCA2* gene are associated with a cumulative high risk of breast/ovarian cancer. Several *BRCA2* variants result in complete loss of the exon-3 at the transcript level. The pathogenicity of these variants and the functional impact of loss of exon 3 have yet to be established.

As a collaboration of the COVAR clinical trial group (France), and the ENIGMA consortium for investigating breast cancer gene variants, this study evaluated 8 *BRCA2* variants resulting in complete deletion of exon 3. Clinical information for 39 families was gathered from Portugal, France, Denmark and Sweden. Multifactorial likelihood analyses were conducted using information from 293 patients, for 7 out of the 8 variants (including 6 intronic). For all variants combined the likelihood ratio in favor of causality was 4.39×10^{25} . These results provide convincing evidence for the pathogenicity of all examined variants that lead to a total exon 3 skipping, and suggest that other variants that result in complete loss of exon 3 at the molecular level could be associated with a high risk of cancer comparable to that associated with classical pathogenic variants in *BRCA1* or *BRCA2* gene. In addition, our functional study shows, for the first time, that deletion of exon 3 impairs the ability of cells to survive upon Mitomycin-C treatment, supporting lack of function for the altered *BRCA2* protein in these cells.

Finally, this study demonstrates that any variant leading to expression of only *BRCA2* delta-exon 3 will be associated with an increased risk of breast and ovarian cancer.

INTRODUCTION

The *BRCA2* gene (MIM#600185) is a tumor suppressor gene that codes for a 3,418 amino-acid protein discovered in 1995 [1]. *BRCA2* is involved in the maintenance of genome integrity by means of two main functions: DNA repair by homologous recombination and stabilization of replication forks under replication stress [2–7]. Pathogenic germline *BRCA2* variants predispose to high risk of breast and ovarian cancer and are associated with the Hereditary Breast and Ovarian Cancer syndrome (HBOC) [8, 9].

The cancer risk for *BRCA2* pathogenic variant carriers is 55% for breast cancer, 16.5% for ovarian cancer, and 62% for contralateral breast cancer [10]. The variants identified in women are mostly classified as pathogenic when they lead to a premature translation termination (premature stop codon). However, variant classification is complicated toward the related risk of cancer when the molecular or functional effect of a variant is unclear [11]. A recent study showed that the cancer risk of pathogenic variant carriers in the different regions of *BRCA2* is not similar. *BRCA2* pathogenic variants localized in 5' (5' to c.2830) and 3' (3' to c.6402) regions were associated with a significant higher breast cancer risk compared with pathogenic variants within the central region [12].

To date, several functional domains have been described in *BRCA2* including the C-terminal DNA binding domain [13]; the BRC repeats in the central region of the protein have a well-established function in the interaction with RAD51 [14–16]. The N-terminal region has been less extensively explored, but it has recently been shown to contain a second DNA binding domain [17]. The N-terminal region of *BRCA2* also comprises exon 3, amino acids 23 to 105. According to the literature, exon 3 is found to be bipartite with a primary activating region (PAR: aa 23–60) and an auxiliary activating region (AAR: aa 60–105). The AAR region has little homology with c-Jun [18] and would be responsible for a kinase activity different from that of c-Jun or independently of the JNK signaling pathway [19, 20]. Milner et al. have shown that these residues bind specifically as a kinase. In addition, the team of Lin et al. tested the possible phosphorylation of *BRCA2* by PLK1 in this region [21]. The primary activating region (PAR) has an activation capacity and is responsible for protein-protein interaction. These residues are involved in an interaction with EMSY, but with no obvious function [22]. EMSY has endogenous transcriptional repressor activity, and participates in DNA damage foci formation. In 2002, Preobrazhenska et al. showed that *BRCA2* (exon 3) is also a Smad-interacting protein which synergizes with Smad3 in activation of gene expression [23].

Most interestingly, the PAR domain also interacts with the PALB2 protein (Partner and localizer of BRCA2) [24]. PALB2 is involved in DNA repair by homologous recombination and forms a complex with BRCA1 and BRCA2 [25].

In the literature, several variants within exon 3 have been described with partial splicing effect (c.68-7T>A, c.68-7₈delinsAA, c.68-7delT) or total splicing effect (c.316+4del, c.156_157insAlu, for example) and considered as neutral (c.68-7T>A, c.125A>G) or causal (c.156_157insAlu) [26, 27]. Furthermore, although point mutations and large rearrangements in the *BRCA2* gene giving rise to exon 3 skipping at the mRNA level might be associated to the abnormal phenotype in breast/ovarian cancer families, the skipping of exon 3 does not alter the reading frame, and the RAD51 binding sites, nuclear localization signals in the 3' region of BRCA2 or other functional domains of the protein still remain intact. Therefore, the heterogeneity of splicing effects with the expression of low quantity of full transcript has shed the doubt on the pathogenicity. Several variants of *BRCA2* are known to result in total loss of exon 3 at the transcript level. For example, the variant with the Alu insertion in the middle of exon 3 (c.156_157insAlu) have been reported in families of Portuguese ancestry and could be due to the existence of co-founding variants related to this insertion, as all families have the same ancestry [27–29]. The c.68-?_316+?del and c.316+4del (previously reported as c.316+3delA) variants with loss of exon 3 tend to increase breast cancer risk in the affected families [26]. For those variants in these studies, the number of families and variants were not sufficient for detailed cancer risk assessment, using co-segregation and other clinical information.

Moreover, the functional role of the affected delta-3 BRCA2 protein domain has not been established and the existence of a stable delta-3 BRCA2 protein, although theoretically possible, has not been proven. Several variants lead to a complete *in frame* deletion of exon 3 has been identified in different countries. A study of the impact of variants leading to transcripts that encode full delta-3 BRCA2 was conducted in France within the framework of the COsegregation of VARiants in the *BRCA1/2* Genes (COVAR) clinical trial [30]. In parallel, the ENIGMA (Evidence-Based Network for the Interpretation of Germline Mutant Alleles) international consortium (including members of COVAR), which is an initiative to evaluate risk and determine the clinical significance of unclassified *BRCA1*, *BRCA2* and other breast cancer susceptibility genes variants, has conducted a collaborative study of known or potentially spliceogenic *BRCA2* variants [31]. To increase the statistical power and reduce the risk of population bias we have included families from both initiatives in the present analysis.

This study addressed several questions related to eight *BRCA2* variants reported to cause complete loss of

exon 3 at the transcriptional level that are expected to lead to a delta-3 protein. First, we selected and confirmed the variants exclusively leading to full skipping of this exon to avoid any bias related to partial expression. Second, we performed functional analysis to determine the impact of a delta-exon-3 BRCA2 protein on BRCA2 function. Finally, we estimated for each variant the causality and probability of being deleterious using multifactorial likelihood analysis including, in addition to segregation data, other clinical estimates of variant pathogenicity.

RESULTS

Selection of variants to address the pathogenic nature of complete loss of *BRCA2* exon 3

In this study, we selected a total of 8 *BRCA2* variants including 6 genetic changes for which there was evidence from patient RNA data that they were associated with total in-frame exon 3 skipping (Supplementary Table 1A). In addition, we included 2 other variants identified in our cohort located at the invariant positions of the 5' splice site of *BRCA2* exon 3 (IVS3+1/+2), expected to cause the same effect.

Confirmation of full exon skipping induced by variants mapping at the 5' splice site of *BRCA2* intron 3

To evaluate the impact on splicing of the 5 variants located at the 5' splice site of *BRCA2* exon 3, we performed a cell-based minigene assay. As shown in Figure 1, the pCAS2-*BRCA2* exon 3 wild-type minigene led to the major production of transcripts containing exon 3 (99% inclusion), whereas the minigene carrying the *BRCA2* c.68-7T>A variant, used here as a control, induced weak exon skipping (7%), as previously shown in patient RNA [26]. In contrast, *BRCA2* c.316+1G>T and c.316+4del were responsible of total exon 3 skipping (100%), as quantified by fluorescent RT-PCR. The 3 other intronic variants tested, *BRCA2* c.316+2T>C, c.316+5G>A and c.316+5G>C, induced major, quasi-complete, exon 3 skipping (respectively, 97%, 94% and 95%). These results are in agreement with patient RNA data (Supplementary Table 1A) and/or *in silico* predictions (Supplementary Table 1B).

Impact in the function of BRCA2

To investigate the functional impact of the complete deletion of exon 3, we generated a cDNA expressing construct carrying this deletion. As expected, we found that GFP-MBP-*BRCA2* WT fully complemented *brca2*-deficient hamster cells (VC8) [32]. In contrast, the complete deletion of exon 3 of *BRCA2* rendered cells hypersensitive to Mitomycin C (MMC) treatment to

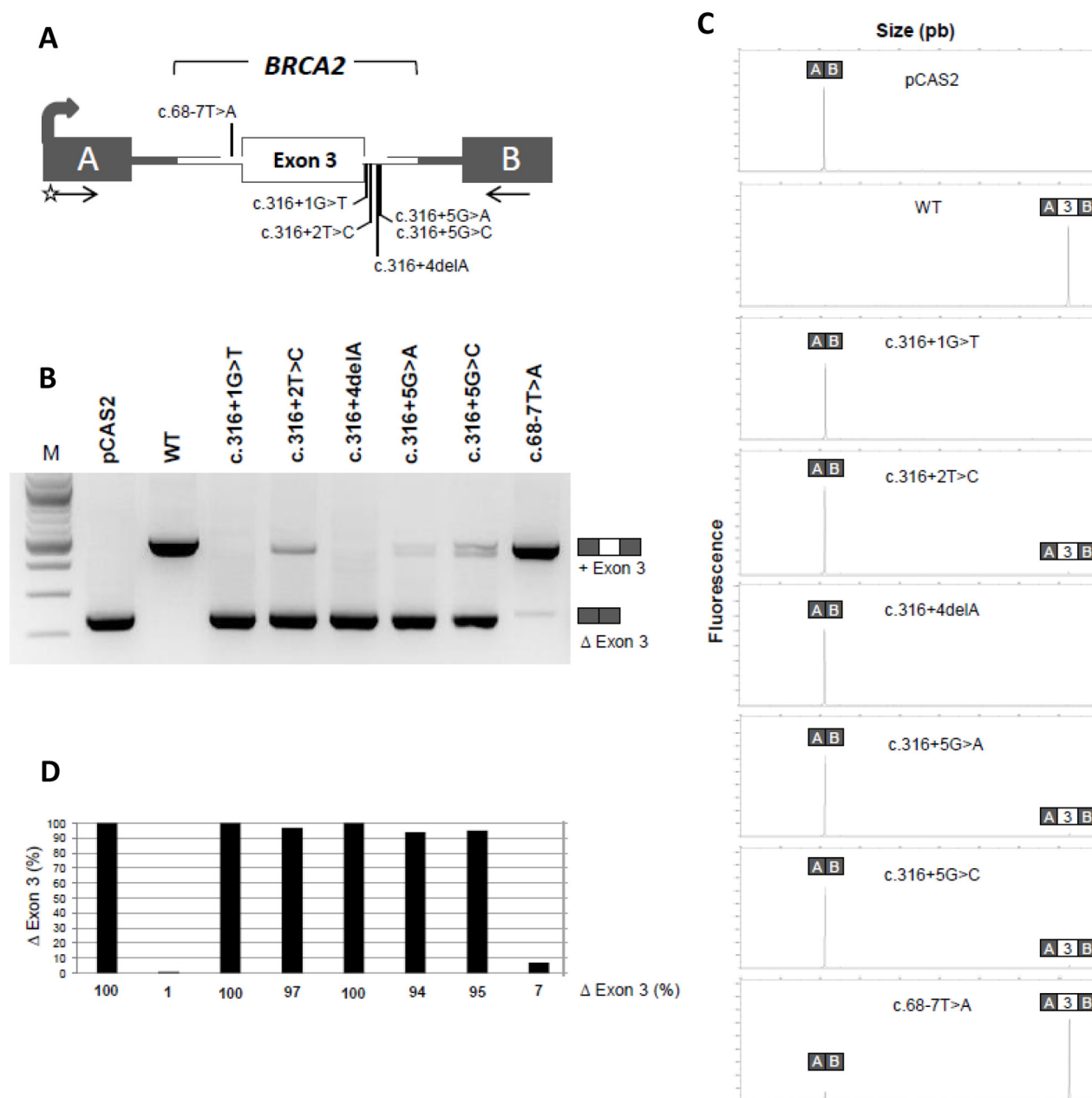


Figure 1: A minigene splicing assay confirms that variants located at the 5' splice site of *BRCA2* exon 3 induce drastic exon skipping. (A) Structure of the pCAS2-*BRCA2*-exon 3 minigene used in the minigene splicing assay. The grey arrow indicates the CMV promoter, boxes represent exons, lines in between indicate introns, and arrows under the exons represent primers used in RT-PCR reactions. The positions of the variants analyzed in the minigene assay are also indicated. The minigenes were generated by inserting a genomic fragment containing *BRCA2* exon 3 and part of flanking intronic sequences into the intron of pCAS2 (either by using the proband's gDNA as template or by introducing the variants into the minigenes by site-directed mutagenesis). WT and mutant constructs, as indicated, were then transfected into HeLa cells and the minigene transcripts were analyzed by RT-PCR, as described in Materials and Methods. (B) Analysis of the splicing pattern of the pCAS2-*BRCA2*-exon 3 minigenes carrying the variants of interest. *BRCA2* c.68-7T>A was used as control. The image shows the results of a representative experiment, in which the RT-PCR products were separated on a 2.5% agarose gel stained with ethidium bromide and visualized by exposure to ultraviolet light. M, size marker (100 bp DNA ladder, New England Biolabs). The identities of the two major RT-PCR products, with or without exon 3, are indicated on the right. (C) Representative results from fluorescent RT-PCR reactions (equivalent to those shown in B) performed by using a fluorescent forward primer and then separated under denaturing conditions by capillary electrophoresis on an automated sequencer. The identities of the RT-PCR products are shown above the peaks. (D) Level of exon 3 skipping observed in the minigene assay as determined by fluorescent RT-PCR (variants displayed in the same order as in B). Results are shown as the average of three independent experiments and are expressed as percentage of exon skipping (exon skipping product x 100/total transcripts).

the same level as the known pathogenic *BRCA2* variant D2723H (c.8167G>C, p.Asp2723His, exon 18) or *Brca2*-deficient cells (Figure 2A). The deletion of exon 3 did not affect the translation and stability of the protein, as it was readily detected by Western Blot (Figure 2B). These results strongly suggest that the region encoded by exon 3 is necessary to restore cell viability following MMC-induced DNA damage.

Causality score from multifactorial likelihood analysis, including segregation data

Multifactorial likelihood analyses were conducted using information from 293 patients (194 confirmed as

carriers of the variant under study) in 26 families. Variants were categorized based on the final posterior probability, according to the classification system for sequence variants proposed by the 2008 IARC working group on unclassified genetic variants [33].

The co-segregation analysis for variants *BRCA2* c.316+5G>C and c.156_157insAlu were the most informative, with 10 and 13 informative families, respectively, and with a substantial segregation likelihood score of 14544.25 and 6.4124×10^{12} respectively (each with a highly informative family, Figure 3). *BRCA2* c.68-?_316+?del also presented a strong segregation likelihood score (1393.30) from only one family with 15 variant carriers among 19 individuals tested. LR from segregation

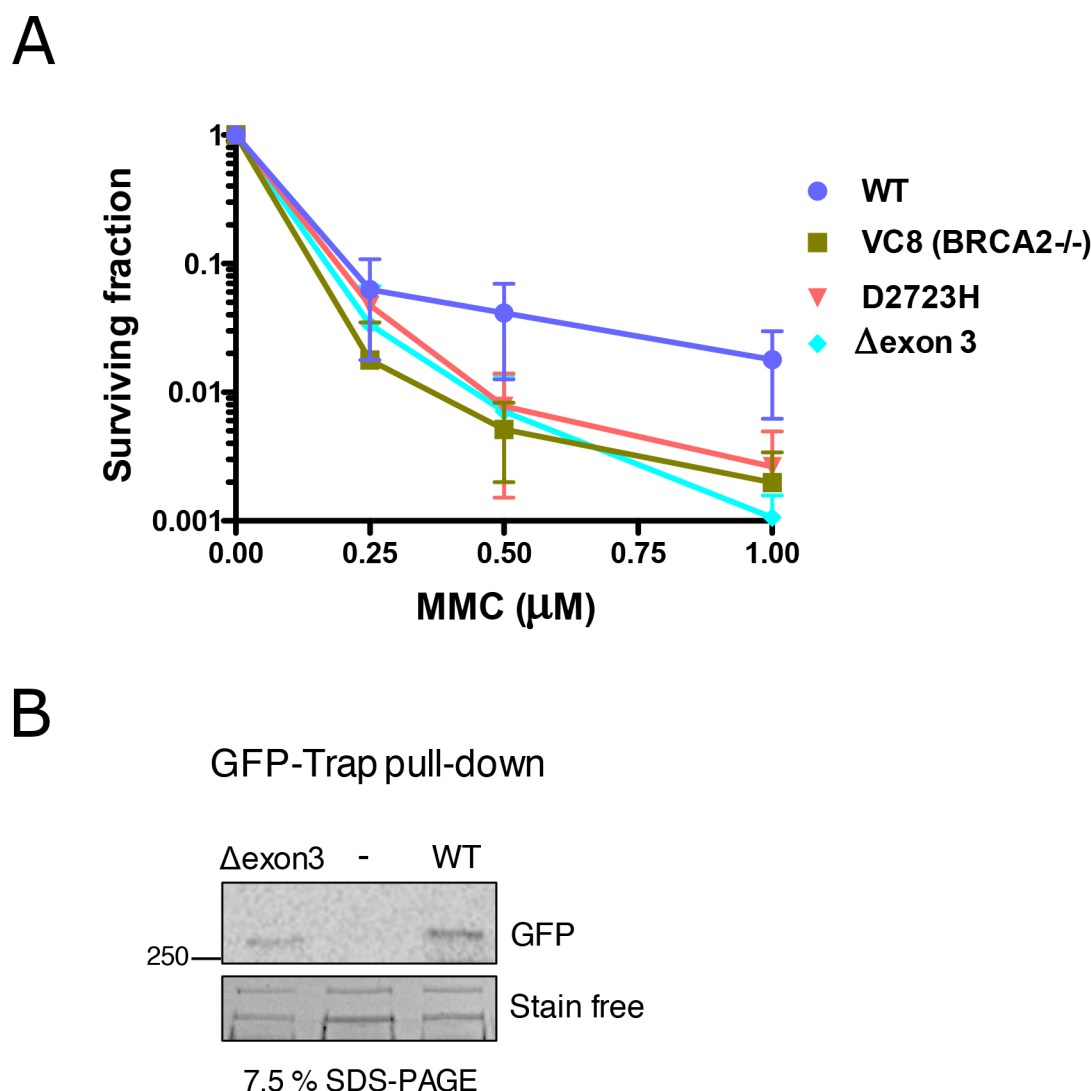


Figure 2: Hypersensitivity of cells exposed to Mitomycin C (MMC) expressing *BRCA2* cDNA carrying Δ exon 3. (A) Clonogenic survival assay of VC8 cells (*Brca2* ^{-/-}) expressing human *BRCA2* wild-type (WT), D2723H (c.8167G>C, exon 18) missense mutation or Δ exon 3 in response to the indicated concentrations of MMC. Error bars, S.D. (n=3). **(B)** Western blot showing GFP-*BRCA2* protein immunoprecipitated from the cell population used for seeding for the clonogenic survival assay (A). StainFree imaging of the gel before transfer was used as a loading control (only a cropped image of the gel is shown).

data alone was in favor of pathogenicity for all other variants with data: c.277_317-726delinsCCAT (19.35), c.316+5G>A (3.69) and c.316+4del (86.77).

Breast tumor pathology data were available for some variant carriers (Supplementary Table 2). The tumor was estrogen receptor-positive and progesterone receptor-negative. For c.316+5G>A, the proband presented breast cancer diagnosed at the age of 30 years that was estrogen receptor-positive. For c.316+5G>C, we present pathology data for 8 patients: age of onset of breast cancer was between 25 and 55 years, with minimum grade 2 and positive estrogen receptor status in almost all cases (6/7). For c.156_157insAlu, pathology data were available for 25 patients: ages of onset of breast cancer were between 28 and 66 years and estrogen receptor status was positive for almost all tumors. LR based on pathology information was higher than 1 for all variants for which relevant information was available.

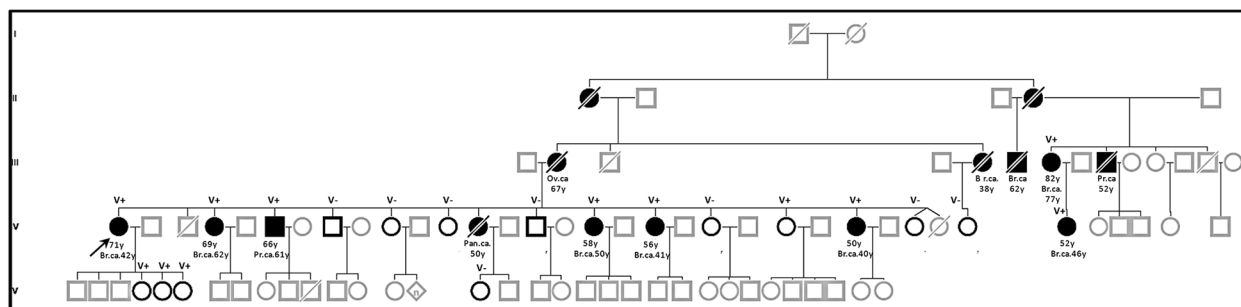
Pathogenicity was assessed for each variant individually, and also for all 7 variants for which information was available, as they were considered to have resulted from the same RNA and protein event. As

shown in Table 1, when considering variants individually, three variants had posterior probabilities >0.99 that categorized them as pathogenic (class 5) providing convincing evidence that these variants are associated with a cancer risk equivalent to the average (mostly truncating) pathogenic variants in *BRCA2*. For all variants combined, the likelihood ratio in favour of causality was 4.39×10^{25} , and the posterior probability of pathogenicity was 1.00.

DISCUSSION

Clinical classification of sequence variants is often limited by the small number of families or the lack of clinical information. This study shows the potential of combined analysis of several variants causing the same functional effect to increase the power of multifactorial likelihood analysis, in particular co-segregation data. In this study, we combined all known variants resulting in complete loss of exon 3, including 5 intronic changes directly affecting the splice donor site as confirmed by splicing assay. This hypothesis was first established with the analysis of the large rearrangement of exon 3 [26];

A



B

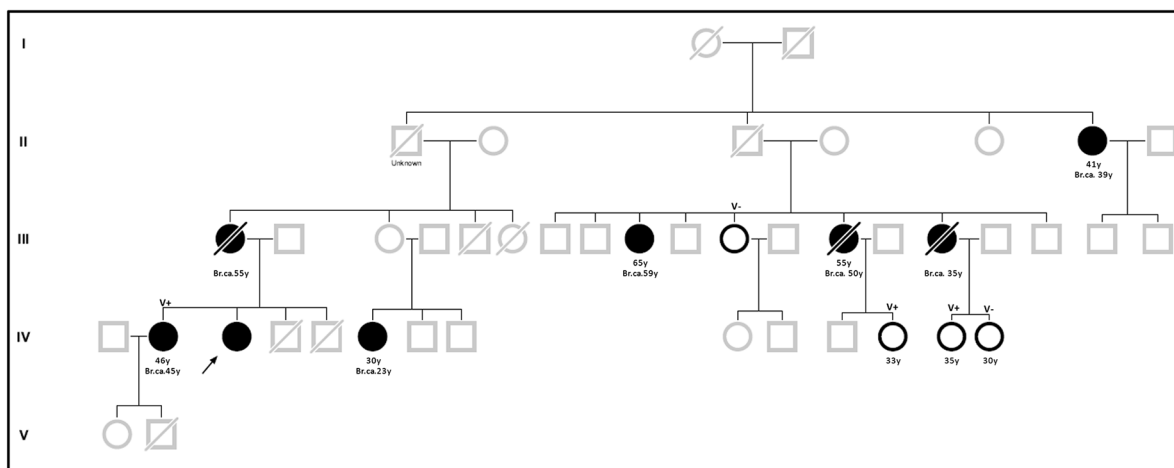


Figure 3: Pedigrees of families with *BRCA2* c. 316+5G>C (A) and c.156_157insAlu (B) variants. Circles indicate females and squares indicate males, in bold relatives with mutated genetic status known but not affected. Slashes indicate death. The proband is indicated by an arrow. Current ages or age at death and age at cancer diagnosis are listed below each individual, together with genetic status when known.

Table 1: Classification based on multifactorial likelihood analysis for *BRCA2* variants leading to exon 3 deletion at the mRNA level

HGVS DNA nomenclature	RNA impact	Number of families	Number of families for cosegregation analysis	Number of relatives for cosegregation analysis (carriers)	LR cosegregation	LR Pathology	Combined LR causality	Prior probability [67]	Posterior probability	Class
c.68_316del	full skipping	1	1	19 (15)	1393,30	-	1393,30	0,5	0,999282796	Class 5
c.156_157insAlu	full skipping	20	18	179 (114)	6,4124E+12	5,23	3,35E+13	0,5	1	Class 5
c.277_317-726delinsCCAT	full skipping	1	1	5 (5)	19,35	1,06	20,51	0,5	0,953504137	Class 4
c.316+1G>T	full skipping	1	1	7 (4)	3,43	-	3,43	0,5	0,774439482	Class 3
c.316+2T>C	full skipping	2	0	0	-	-	-	-	-	-
c.316+4del	full skipping	2	1	15 (10)	86,77	-	86,77	0,5	0,988606469	Class 4
c.316+5G>A	full skipping	2	1	6 (5)	3,69	1,15	4,24	0,5	0,809128615	Class 3
c.316+5G>C	full skipping	12	10	62 (41)	14544,25	2,94	36332,99	0,5	0,999976616	Class 5
Score total for all variants	full skipping	41	33	293 (194)			4,39E+25	0,5	1	Class 5

however, the classification of complete deletions of exon 3 in *BRCA2* in the clinical setting has been controversial [26, 28, 29, 34–38]. In this study, we definitively prove that a full total deletion of exon 3 of *BRCA2* is pathogenic.

Indeed, in this study, we validate the full in-frame exon 3 skipping for six *BRCA2* variants with the minigene approach avoiding any ambiguity on a partial expression of a full transcript. This approach was required to gather several variants with a putative similar impact on splicing and to distinguish those variants to those on the intron 2 (c.68-7A>T).

Then this study presents results from multifactorial likelihood analysis of six out of eight *BRCA2* variants proven to lead to a full in-frame exon 3 skipping at the transcriptional level, including co-segregation analysis of multiple families (c.68-?_316+?del, c.156_157insAlu, c.316+1G>T, c.316+4del, c.316+5G>A, c.316+5G>C). There was sufficient evidence to classify individually three variants as pathogenic (Class 5). Notably, the likelihood ratio of causality from segregation data alone was 1393:1 from a single family carrying c.68-?_316+?del, 14544:1 for 12 families carrying c.316+5G>C, and 6.4×10^{12} for 13 families carrying c.156_157insAlu. Another variant (c.316+4del) had sufficient information available to place it as likely pathogenic (Class 4). All evidence from segregation and pathology data for individual variants, irrespective of their individual classification, was in

favor of pathogenicity. The likelihood ratio in favor of causality was 4.39×10^{25} , and the posterior probability of pathogenicity was 1.00 for all variants combined. These results provide convincing evidence for the pathogenicity of all seven variants that lead to complete deletion of exon 3, and suggest that other variants that result in complete loss of exon 3 at the molecular level will be associated with a high risk of cancer comparable to other classical pathogenic variants in *BRCA2* (largely truncating), including c.316+2G>T. The pathology of consecutive breast cancers related to those variants were estrogen receptor-positive as typically described for *BRCA2* breast tumors (Supplementary Table 2; 29/35 ER-positive, 32/35 PR-positive, 4/18 HER2-positive, 10/25 grade 2) [39]. The variant c.277_317-726delinsCCAT from Nordling et al. presented one family with pathology data for one carrier with invasive cancer of the left breast and multiple axillary and supraclavicular node metastases at the age of 41 years [32]. These findings are of direct relevance for counseling and management of individuals found to carry these variants.

Importantly, our clinical analysis is fully supported by functional assays demonstrating that ectopically expressed *BRCA2* transcripts lacking exon 3 confer hypersensitivity to DNA damage (MMC treatment). Our functional study shows, for the first time, that deletion of exon 3 impairs the ability of cells to survive

MMC treatment, strongly suggesting that BRCA2 is not functional in these cells. These findings correlate with an increased cancer risk as calculated in our multifactorial likelihood analysis.

Our results suggest that this part of the protein is important for the DNA damage repair function of BRCA2. Among all the BRCA2 partners described above, an obvious candidate for the DNA repair defective function of the protein lacking exon 3 observed in this study is loss of the PALB2 binding site [24, 25, 40–43] (Figure 4). The region of interaction has been defined by crystallography for BRCA2 (amino acids 21–39 part of exon 3) and PALB2 (WD40 motifs, amino acids 836–1186 from exon 6 to exon 13, Figure 4B and 4C). The level of cancer risk associated to *PALB2* pathogenic variants is known to be low in comparison to *BRCA2* pathogenic variants, but enough to propose a clinical management of the family contrary to other low risk genes, notably *CHEK2* 1100delC and *ATM* [44]. The importance of this interaction for the DNA repair function of BRCA2 has been highlighted in several studies [25, 45, 46]. In particular, Siau et al showed that a truncated BRCA2 protein lacking the entire C-terminal DNA binding domain could partially restore the DSB

repair function of BRCA2 only when the PALB2 binding site was intact. These results strongly suggest that PALB2 interaction is important for the DSB repair function of BRCA2. BRCA2 and PALB2 cooperate in other related functions, such as the G2/M checkpoint control upon DNA damage [47]. In addition, *in vitro*, BRCA2 and PALB2 cooperate in stimulating RAD51-mediated D-loop formation, a critical step in HR [48]. Furthermore, PALB2 is an integral component of the BRCA complex [49] in which PALB2 mediates the physical interaction between BRCA2 and the C-terminal region of BRCA1 (Figure 4A) [25, 50]. These three proteins also act together to protect stalled replication forks from excessive degradation [5]. It has recently been shown that both the RAD51 recruitment to DSBs and the replication fork protection function are impaired due to disruption of BRCA2-PALB2 interaction [45]. Based on the work on the truncated protein [46], the PALB2 binding site precludes the DSB function of BRCA2. Whether the replication protective function is also altered in the delta-exon 3 protein warrants further investigation.

The importance of the exon 3 and the effect on the risk in the absence of this domain should help to

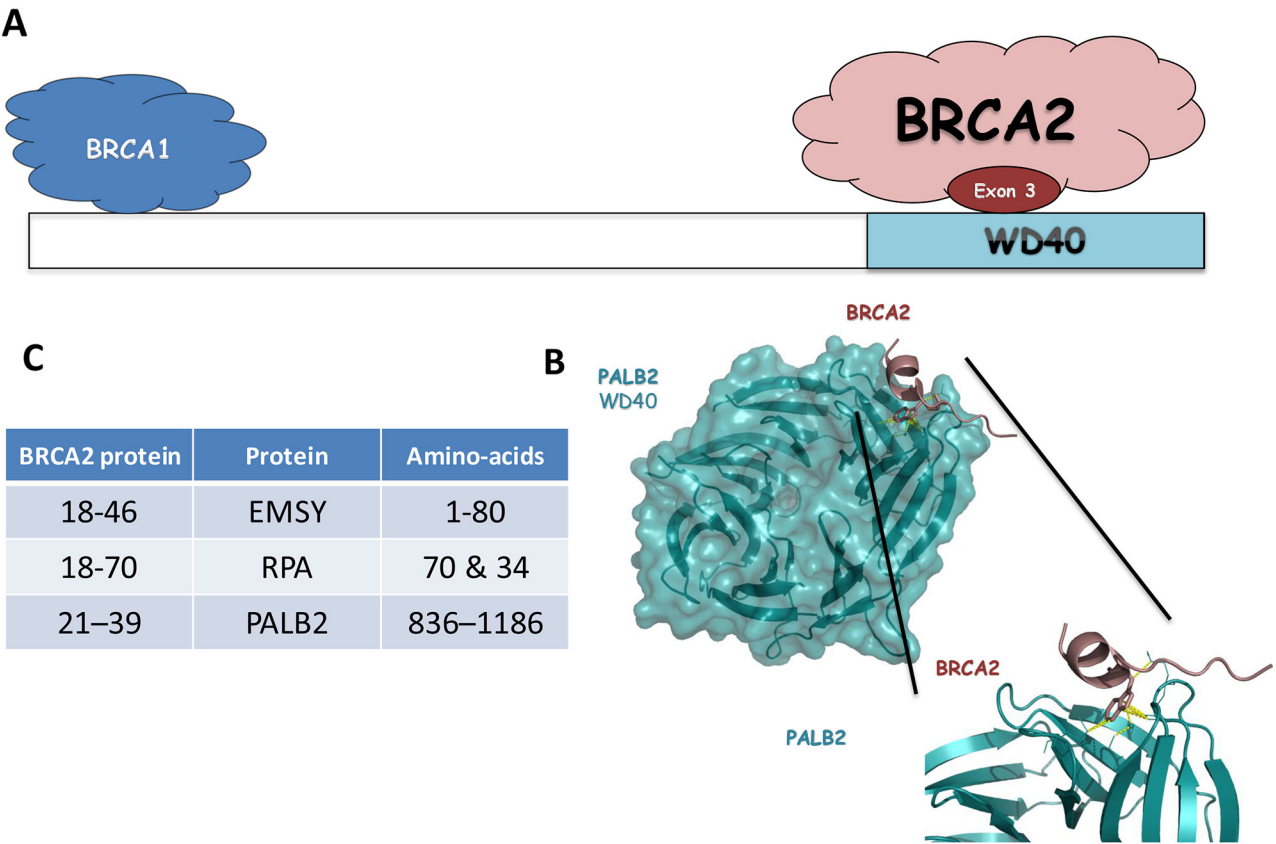


Figure 4: (A) Schematic representation of PALB2 domains and binding sites for its interacting partners (BRCA1 and BRCA2). (B) Interaction site with WD40 domain of the PALB2 protein and the exon 3 domain of the BRCA2 protein. Ribbon representation of the BRCA2-PALB2 complex (pdb ID: 3EU7). Domain WD40 of PALB2 is colored cyan and BRCA2 exon 3 is colored dark red. (C) Table of the interaction aminoacids for the EMSY and PALB2 proteins with the exon 3 domain of the BRCA2 protein.

reconsider some interaction already described. Hugues-Davies et al. found the *EMSY* gene to be amplified in 13% of all breast cancers and 17% of ovarian cancers (20% of cases of high-grade serous ovarian cancer [51]). *EMSY* was shown to be capable of silencing the transcription activation potential of a *BRCA2* protein domain encoded by exon 3. Like *BRCA2*, *EMSY* also relocates to double-strand break repair sites after DNA damage. These results reinforce the functional link between *BRCA2* and *EMSY*. The *BRCA2* inactivation through *EMSY* amplification might be important in the tumorigenesis of a substantial proportion of non-inherited sporadic breast cancer. Recent studies have shown that amplification of *EMSY* was also associated with other cancers such as prostate and pancreatic cancers [52]. Overexpression of *EMSY* interferes with the potential activation domain of *BRCA2* encoded by exon 3 decreasing *BRCA2* activity and resulting in a genomic instability phenotype as seen in *BRCA2* deficient cells [22, 53]. The absence of the exon-3 domain then mimics this action of *EMSY* and increase the risks.

Other functions have been assigned to the exon-3 region., *Smad3* have been described to be related to *BRCA2* both as modifier gene for the risk and with a direct functional interaction with exon 3 [54]. Another team was shown an interaction between *BRCA2* (residues 18-70) and hRPA (polypeptides 70 and 34) [55]. This interaction *BRCA2*-hRPA is detected in the presence or absence of DNA binding by RPA. This is in contrast to a report that the p53-hRPA interaction is abrogated if RPA was prebound to DNA. For those proteins, their relevance for the functional effect observed in this study is less obvious and would deserve more investigations.

Furthermore, this approach, to combine information from several families with different genetic alterations resulting in the same final impact on the transcript provided the statistical power to calculate the odds of causality for seven variants. In principle, the same approach could be applied to other in-frame exons, in which deletion would be expected to lead to an internally deleted protein such as exons 10, 11, 12 [56], 17, 19, 26 and 27 of *BRCA2* or in other cancer susceptibility genes.

CONCLUSIONS

This study demonstrates that full *BRCA2* exon 3 skipping is pathogenic, probably due to a defect in *BRCA2* DNA damage repair function, and provides convincing evidence that variant alleles producing only transcripts lacking exon 3 should be considered to be pathogenic.

MATERIALS AND METHODS

Patient recruitment and consent

Variants under study were identified after genetic testing of patients reporting family history consistent with

a high risk of carrying a *BRCA1* or *BRCA2* pathogenic variant. In France, eligibility for testing is defined by the French “UNICANCER Genetic Group” (UGG) and Inserm guidelines [57]. The families from ENIGMA were recruited from many different countries according to each country’s specific guidelines in place [31].

Selected variants

Only variants suspected to result in complete deletion of *BRCA2* exon 3 at the transcriptional level were selected for this study. The transcriptional impact was based on both the literature and on the results of functional analysis performed in the various participating laboratories. Intronic variants were validated by a dedicated minigene assay.

We evaluated eight *BRCA2* variants resulting in a complete deletion of exon 3 (see Supplementary Table 1 and Table 1): c.68-?_316+?del, c.156_157insAlu, c.277_317-726delinsCCAT [36] c.316+1G>T, c.316+2T>C, c.316+4del, c.316+5G>A, c.316+5G>C. Data from 39 families were therefore collected from France, Portugal, Denmark and Sweden. Genotype and clinical data from variant carriers and relatives were obtained via diagnostic clinical testing (for laboratories in which a variant was considered to be pathogenic) or otherwise via ethically approved research testing following informed consent of the participants. In France, the latter included recruitment via the COVAR study (<https://clinicaltrials.gov/ct2/show/results/NCT01689584>). Co-segregation data were obtained for 293 patients from the 33 families in this study (194 confirmed as carriers of the variant under study).

Cell-based minigene splicing assay

In order to evaluate the impact of the selected *BRCA2* exon 3 variants on RNA splicing, we performed a functional assay based on the comparative analysis of the splicing pattern of wild-type (WT) and mutant reporter minigenes, as follows. Minigenes were prepared by using the pCAS2 vector [58, 59]. First, WT and mutant *BRCA2* genomic fragments c.68-165_c.316+225 (*BRCA2* exon 3 and part of the flanking introns) were PCR-amplified from patient genomic DNA by using forward primer B2Ex3_Bam-F (5'- GACCGGATCCTTCGCAAGAGAATGGATTAATG-3') and reverse primer B2Ex3_Mlu-R (5'- GAC CACGCGTGGAGGGATGAAAGAGAACATTTAC-3'). Because patient’s DNA was not available for c.316+1G>T, we prepared the mutant DNA segment by site-directed mutagenesis using the two-stage overlap extension PCR method [Ho et al, 1989] and the pCAS2-*BRCA2*e3.WT construct as a template. After digestion with BamHI and MluI, the PCR products were inserted into the cloning sites of the reporter plasmid pCAS2, yielding the three-exon hybrid minigenes pCAS2-*BRCA2*e3. All constructs were sequenced to ensure that no unwanted mutations

had been introduced into the inserts during the PCR or cloning process. Next, WT and mutant minigenes (400 ng/well) were transfected in parallel into HeLa cells grown at ~70% confluence in 12-well plates using the FuGENE 6 transfection reagent (Roche Applied Science). HeLa cells obtained from ATCC were cultivated in Dulbecco's modified Eagle medium (Life Technologies) supplemented with 10% fetal calf serum in a 5% CO₂ atmosphere at 37°C. Twenty-four hours later, total RNA was extracted using the NucleoSpin RNA II kit (Macherey Nagel) according to the manufacturer's instructions, and the minigenes' transcripts were analysed by semi-quantitative RT-PCR (30 cycles of amplification) in a 25 µl reaction volume by using the OneStep RT-PCR kit (Qiagen), 200 ng total RNA and minigene specific primers (KOI-F 5'-TGACGTCGCCGCCCATCAC-3' and pCAS2R 5'-ATTGGTTGTTGAGTTGGTTGTC-3'). RT-PCR products were separated by electrophoresis on 2.5% agarose gels containing ethidium bromide and visualized by exposure to ultraviolet light under saturating conditions using the Gel Doc XR image acquisition system (Bio-Rad), followed by gel-purification and sanger sequencing for proper identification of the minigene's transcripts. Finally, splicing events were quantitated by performing equivalent fluorescent RT-PCR reactions followed by capillary electrophoresis on an automated sequencer (Applied Biosystems) using 500 ROX™ Size Standard (Applied Biosystems) and computational analysis by using the GeneMapper v5.0 software (Applied Biosystems).

Bioinformatics predictions of splicing alterations

For each of the selected intronic variants, in silico predictions of their potential effects on splice sites were obtained by using the following in silico tools: SpliceSiteFinder-like (SSF, <http://www.interactive-biosoftware.com>), MaxEntScan (MES, http://genes.mit.edu/burgelab/maxent/Xmaxentseq_scoreseq.html) [60], NNSplice (NNS), GeneSplicer (GS) and Human Splicing Finder (HSF, <http://www.umd.be/HSF/>) [61]. These algorithms were simultaneously interrogated by using the integrated software Alamut (Interactive Biosoftware, <http://www.interactive-biosoftware.com>).

Segregation analyses, multifactorial likelihood analysis and calculation of posterior probability of pathogenicity

Segregation analysis can be used to determine an odds or likelihood ratio quantifying the probability that a variant is linked to breast and/or ovarian cancer more than expected by chance. In a family in which most individuals carrying a particular variant develop breast/ovarian cancer, there is a strong likelihood that the variant causes the cancer phenotype. For a given variant, the product of the individual Bayes factors

over the relevant families generates a likelihood ratio that quantifies the association with the disease [62]. In addition to segregation information as a direct measure of disease causality in families, the overall evaluation of causality can be calculated using multifactorial likelihood analysis [63] that includes additional information. For each variant, the likelihood ratio derived from co-segregation analysis was combined with other sources of data (family history, pathology data, etc.) to generate an overall likelihood score of causality. Information on segregation was available for all other families, and likelihood ratios (LRs) based on tumor pathology were available for a subset of variants. Multifactorial analysis was conducted using the methods described in Walker et al [64] which incorporates likelihoods for segregation and tumor pathology [65]. As previously described [63], probabilities were derived for each component under the assumption that each factor was statistically independent, the individual likelihood ratios were multiplied to calculate an overall multifactorial likelihood ratio, and Bayes factor analysis was then used to calculate a posterior probability that the variant was pathogenic from the multifactorial likelihood ratio and the prior probability. Given the knowledge that all variants resulted in the same aberration at the molecular level, and fact that the research question was to assess the clinical relevance of this molecular aberration (whether or not this aberration is pathogenic), all variants were assigned a prior probability of 0.5 [66, 67].

Variants were classified according to the criteria defined by Plon et al. [33], namely: Class 1: not pathogenic posterior probability (pp) 0.001; class 2: likely not pathogenic pp 0.001–0.049; Class 3: uncertain pp 0.05–0.949; Class 4: likely pathogenic pp 0.95–0.99; Class 5: pathogenic pp 0.99.

Clonogenic survival assay

Cloning of the deletion of exon 3 from BRCA2 into GFP-MBP-BRCA2 was obtained by PCR from a fragment synthesized from a patient carrying the deletion using the following primers: 5' TAACCGGTACCCA GCGGCCGCCCTATTGGATCCAAAGAG 3' and 5' CATATCAGGATCCACCTCAGCTCCTAGAC 3'. The insert was cloned into NotI and BbvCI sites of the GFP-MBP-BRCA2. All constructs were verified by DNA sequencing.

Brca2-deficient hamster cells (VC8) were transfected with human GFP-MBP-tagged full-length BRCA2, BRCA2 Δ exon 3 or known pathogenic missense BRCA2 variant D2723H (c.8167G>C, exon 18) cDNA expression constructs using Turbofect (Thermo Fisher Scientific) according to the manufacturer's specifications. Cell populations were selected in HAM's F10 media (10% FBS) containing 1 mg/ml G418 (Sigma-Aldrich). After one week in selection media, the cell population

was seeded for clonogenic survival assay, incubated overnight and treated with Mitomycin C (Sigma-Aldrich) at concentrations of 0.25, 0.5 and 1.0 μ M in serum-free HAM's F10 media. Cells were treated for 1 h with the indicated concentrations of MMC, then washed, trypsinized, serially diluted and seeded in triplicates into 6-well plates. After 9 days of culture the cells were washed and stained with 1% crystal violet. Plates were dried overnight and colonies were counted to determine the survival fraction for each MMC concentration.

Immunodetection of BRCA2

To verify protein expression, a fraction of the cells was harvested and lysed in lysis buffer containing 50 mM Hepes (pH 7.5), 250 mM NaCl, 5 mM EDTA, 1% NP-40, 1 mM dithiothreitol (DTT), 1 mM PMSF, and Protease Inhibitor Cocktail (Roche). GFPMBP-BRCA2 protein was detected from GFP-trap (ChromoTek) immunoprecipitates by immunoblotting with GFP antibody (Sigma G1544, 1:500).

Author contributions

Conception and design: F. Coulet, E. Rouleau, S. M. Caputo, M. Thomassen, R. Brandao.

Acquisition of data (provided animals, acquired and managed patients, provided facilities, etc.): S.M. Caputo, M. Leone, F. Damiola; O. Sininilkova, S. Demontety, A. Petitalot, A. Ehlen, A. Carrera, A. Martins, H. Lebeuf, P. Gaildrat, G. Castelain, M. Thomassen, H. Roed Nielsen.

Writing, review, and/or revision of the manuscript: S. M. Caputo, E. Rouleau, A. Carrera; A. Martins, P. Gaildrat, F. Damiola, M. Thomassen, F. Coulet, A.B. Spurdle.

Administrative, technical, or material support (i.e., reporting or organizing data, constructing databases): S. M. Caputo, M. Bronner, F. Coulet, M. Leone, N. Boutry-Kryza, O. Sininilkova, D. Muller, C. Houdayer, V. Moncoutier, C. Lefol, E. Rouleau, C. Delnatte, M. Guillaud-Bataille, N. Uhrhammer, L. Castera, S. Krieger, U. Birk Jensen, I. Søkilde, M. Thomassen, R. Brandao, M. Teixeira, A. Vega, A. Peixoto, D. Stoppa-Lyonnet.

Study supervision: S.M. Caputo, E. Rouleau, A.B. Spurdle.

ACKNOWLEDGMENTS

We thank the many families who participated in this study. This work is supported by the efforts of laboratory and clinical staff from many centres around the world. This work was supported by the French National Cancer Institute and the Direction Générale de l'Offre des Soins (INCa/DGOS), the Association Recherche contre le Cancer (ARC), and the Groupement des Entreprises Françaises dans la Lutte contre le Cancer (Gefluc). G.C.

was funded by the French INCa, and H.T. was sponsored by both the Association Nationale de la Recherche et de la Technologie (ANRT, CIFRE PhD fellowship), and by the OpenHealth Institute. The work by A.C. and A.E. was supported by the French National Institut for Cancer Research grant # INCa-DGOS_8706.

CONFLICTS OF INTEREST

All the other authors declare to have no conflicts of interest.

FUNDING

La Ligue Contre le Cancer and INCa (COVAR), INCa (SMC, AP, SD), NHMRC Senior Research Fellowship (ABS). This work was supported by a translational research grant (FASDEC) from the French National Cancer Institute and the Direction Générale de l'Offre des Soins (INCa/DGOS), the French Association pour la Recherche sur le Cancer (ARC), and the Groupement des Entreprises Françaises dans la Lutte contre le Cancer (Gefluc). GC was sponsored by the French INCa, and HT by the Association Nationale de la Recherche et de la Technologie (ANRT, CIFRE PhD fellowship to H.T.) and the OpenHealth Institute.

REFERENCES

1. Wooster R, Bignell G, Lancaster J, Swift S, Seal S, Mangion J, Collins N, Gregory S, Gumbs C, Micklem G, Barfoot R, Hamoudi R, Patel S, et al. Identification of the breast cancer susceptibility gene BRCA2. *Nature*. 1995; 378:789–92. <https://doi.org/10.1038/378789a0>.
2. Gudmundsdottir K, Ashworth A. The roles of BRCA1 and BRCA2 and associated proteins in the maintenance of genomic stability. *Oncogene*. 2006; 25:5864–74. <https://doi.org/10.1038/sj.onc.1209874>.
3. Jensen RB, Carreira A, Kowalczykowski SC. Purified human BRCA2 stimulates RAD51-mediated recombination. *Nature*. 2010; 467:678–83. <https://doi.org/10.1038/nature09399>.
4. Prakash R, Zhang Y, Feng W, Jasin M. Homologous recombination and human health: the roles of BRCA1, BRCA2, and associated proteins. *Cold Spring Harb Perspect Biol*. 2015; 7:a016600. <https://doi.org/10.1101/cshperspect.a016600>.
5. Schlacher K, Wu H, Jasin M. A distinct replication fork protection pathway connects Fanconi anemia tumor suppressors to RAD51-BRCA1/2. *Cancer Cell*. 2012; 22:106–16. <https://doi.org/10.1016/j.ccr.2012.05.015>.
6. Venkitaraman AR. Cancer suppression by the chromosome custodians, BRCA1 and BRCA2. *Science*. 2014; 343:1470–75. <https://doi.org/10.1126/science.1252230>.

7. Yoshida K, Miki Y. Role of BRCA1 and BRCA2 as regulators of DNA repair, transcription, and cell cycle in response to DNA damage. *Cancer Sci.* 2004; 95:866–71. <https://doi.org/10.1111/j.1349-7006.2004.tb02195.x>.
8. Castéra L, Krieger S, Rousselin A, Legros A, Baumann JJ, Bruet O, Brault B, Fouillet R, Goardon N, Letac O, Baert-Desurmont S, Tinat J, Bera O, et al. Next-generation sequencing for the diagnosis of hereditary breast and ovarian cancer using genomic capture targeting multiple candidate genes. *Eur J Hum Genet.* 2014; 22:1305–13. <https://doi.org/10.1038/ejhg.2014.16>.
9. Walsh T, King MC. Ten genes for inherited breast cancer. *Cancer Cell.* 2007; 11:103–05. <https://doi.org/10.1016/j.ccr.2007.01.010>.
10. Mavaddat N, Peock S, Frost D, Ellis S, Platte R, Fineberg E, Evans DG, Izatt L, Eeles RA, Adlard J, Davidson R, Eccles D, Cole T, et al, and EMBRACE. Cancer risks for BRCA1 and BRCA2 mutation carriers: results from prospective analysis of EMBRACE. *J Natl Cancer Inst.* 2013; 105:812–22. <https://doi.org/10.1093/jnci/djt095>.
11. Guidugli L, Carreira A, Caputo SM, Ehlen A, Galli A, Monteiro AN, Neuhausen SL, Hansen TV, Couch FJ, Vreeswijk MP; ENIGMA consortium. Functional assays for analysis of variants of uncertain significance in BRCA2. *Hum Mutat.* 2014; 35:151–64.
12. Kuchenbaecker KB, Hopper JL, Barnes DR, Phillips KA, Mooij TM, Roos-Blom MJ, Jervis S, van Leeuwen FE, Milne RL, Andrieu N, Goldgar DE, Terry MB, Rookus MA, et al, and BRCA1 and BRCA2 Cohort Consortium. Risks of breast, ovarian, and contralateral breast cancer for BRCA1 and BRCA2 mutation carriers. *JAMA.* 2017; 317:2402–16. <https://doi.org/10.1001/jama.2017.7112>.
13. Yang H, Jeffrey PD, Miller J, Kinnucan E, Sun Y, Thoma NH, Zheng N, Chen PL, Lee WH, Pavletich NP. BRCA2 function in DNA binding and recombination from a BRCA2-DSS1-ssDNA structure. *Science.* 2002; 297:1837–48. <https://doi.org/10.1126/science.297.5588.1837>.
14. Carreira A, Kowalczykowski SC. BRCA2: shining light on the regulation of DNA-binding selectivity by RAD51. *Cell Cycle.* 2009; 8:3445–47. <https://doi.org/10.4161/cc.8.21.9748>.
15. Carreira A, Hilario J, Amitani I, Baskin RJ, Shivji MK, Venkitaraman AR, Kowalczykowski SC. The BRC repeats of BRCA2 modulate the DNA-binding selectivity of RAD51. *Cell.* 2009; 136:1032–43. <https://doi.org/10.1016/j.cell.2009.02.019>.
16. Pellegrini L, Yu DS, Lo T, Anand S, Lee M, Blundell TL, Venkitaraman AR. Insights into DNA recombination from the structure of a RAD51-BRCA2 complex. *Nature.* 2002; 420:287–93. <https://doi.org/10.1038/nature01230>.
17. von Nicolai C, Ehlén Å, Martin C, Zhang X, Carreira A. A second DNA binding site in human BRCA2 promotes homologous recombination. *Nat Commun.* 2016; 7:12813. <https://doi.org/10.1038/ncomms12813>.
18. Milner J, Ponder B, Hughes-Davies L, Seltsmann M, Kouzarides T. Transcriptional activation functions in BRCA2. *Nature.* 1997; 386:772–73. <https://doi.org/10.1038/386772a0>.
19. May GH, Harris F, Gillespie D, Black DM. The BRCA2 transactivation domain does not interact with JNK. *Genes Chromosomes Cancer.* 1999; 25:407–09. [https://doi.org/10.1002/\(SICI\)1098-2264\(199908\)25:4<407::AID-GCC16>3.0.CO;2-I](https://doi.org/10.1002/(SICI)1098-2264(199908)25:4<407::AID-GCC16>3.0.CO;2-I).
20. Milner J, Fuks F, Hughes-Davies L, Kouzarides T. The BRCA2 activation domain associates with and is phosphorylated by a cellular protein kinase. *Oncogene.* 2000; 19:4441–45. <https://doi.org/10.1038/sj.onc.1203793>.
21. Lin HR, Ting NS, Qin J, Lee WH. M phase-specific phosphorylation of BRCA2 by Polo-like kinase 1 correlates with the dissociation of the BRCA2-P/CAF complex. *J Biol Chem.* 2003; 278:35979–87. <https://doi.org/10.1074/jbc.M210659200>.
22. Hughes-Davies L, Huntsman D, Ruas M, Fuks F, Bye J, Chin SF, Milner J, Brown LA, Hsu F, Gilks B, Nielsen T, Schulzer M, Chia S, et al. EMSY links the BRCA2 pathway to sporadic breast and ovarian cancer. *Cell.* 2003; 115:523–35. [https://doi.org/10.1016/S0092-8674\(03\)00930-9](https://doi.org/10.1016/S0092-8674(03)00930-9).
23. Preobrazhenska O, Yakymovych M, Kanamoto T, Yakymovych I, Stoika R, Heldin CH, Souchelnytskyi S. BRCA2 and Smad3 synergize in regulation of gene transcription. *Oncogene.* 2002; 21:5660–64. <https://doi.org/10.1038/sj.onc.1205732>.
24. Xia B, Sheng Q, Nakanishi K, Ohashi A, Wu J, Christ N, Liu X, Jasin M, Couch FJ, Livingston DM. Control of BRCA2 cellular and clinical functions by a nuclear partner, PALB2. *Mol Cell.* 2006; 22:719–29. <https://doi.org/10.1016/j.molcel.2006.05.022>.
25. Zhang F, Fan Q, Ren K, Andreassen PR. PALB2 functionally connects the breast cancer susceptibility proteins BRCA1 and BRCA2. *Mol Cancer Res.* 2009; 7:1110–18. <https://doi.org/10.1158/1541-7786.MCR-09-0123>.
26. Muller D, Rouleau E, Schultz I, Caputo S, Lefol C, Bièche I, Caron O, Noguès C, Limacher JM, Demange L, Lidereau R, Fricker JP, Abecassis J. An entire exon 3 germ-line rearrangement in the BRCA2 gene: pathogenic relevance of exon 3 deletion in breast cancer predisposition. *BMC Med Genet.* 2011; 12:121. <https://doi.org/10.1186/1471-2350-12-121>.
27. Peixoto A, Santos C, Pinheiro M, Pinto P, Soares MJ, Rocha P, Gusmão L, Amorim A, van der Hout A, Gerdes AM, Thomassen M, Kruse TA, Cruger D, et al. International distribution and age estimation of the Portuguese BRCA2 c.156_157insAlu founder mutation. *Breast Cancer Res Treat.* 2011; 127:671–79. <https://doi.org/10.1007/s10549-010-1036-3>.
28. Peixoto A, Santos C, Rocha P, Pinto P, Bizarro S, Teixeira MR. Molecular diagnosis of the Portuguese founder mutation BRCA2 c.156_157insAlu. *Breast Cancer*

Res Treat. 2009; 117:215–17. <https://doi.org/10.1007/s10549-008-0214-z>.

29. Peixoto A, Santos C, Rocha P, Pinheiro M, Príncipe S, Pereira D, Rodrigues H, Castro F, Abreu J, Gusmão L, Amorim A, Teixeira MR. The c.156_157insAlu BRCA2 rearrangement accounts for more than one-fourth of deleterious BRCA mutations in northern/central Portugal. *Breast Cancer Res Treat.* 2009; 114:31-8.
30. Caputo S, Benboudjema L, Sinilnikova O, Rouleau E, Bérout C, Lidereau R; French BRCA GGC Consortium. Description and analysis of genetic variants in French hereditary breast and ovarian cancer families recorded in the UMD-BRCA1/BRCA2 databases. *Nucleic Acids Res.* 2012; 40:D992-1002.
31. Spurdle AB, Healey S, Devereau A, Hogervorst FB, Monteiro AN, Nathanson KL, Radice P, Stoppa-Lyonnet D, Tavtigian S, Wappenschmidt B, Couch FJ, Goldgar DE; ENIGMA. ENIGMA--evidence-based network for the interpretation of germline mutant alleles: an international initiative to evaluate risk and clinical significance associated with sequence variation in BRCA1 and BRCA2 genes. *Hum Mutat.* 2012; 33:2-7.
32. Martinez JS, von Nicolai C, Kim T, Ehlén Å, Mazin AV, Kowalczykowski SC, Carreira A. BRCA2 regulates DMC1-mediated recombination through the BRC repeats. *Proc Natl Acad Sci USA.* 2016; 113:3515–20. <https://doi.org/10.1073/pnas.1601691113>.
33. Plon SE, Eccles DM, Easton D, Foulkes WD, Genuardi M, Greenblatt MS, Hogervorst FB, Hoogerbrugge N, Spurdle AB, Tavtigian SV, and IARC Unclassified Genetic Variants Working Group. Sequence variant classification and reporting: recommendations for improving the interpretation of cancer susceptibility genetic test results. *Hum Mutat.* 2008; 29:1282–91. <https://doi.org/10.1002/humu.20880>.
34. Bonnet C, Krieger S, Vezain M, Rousselin A, Tournier I, Martins A, Berthet P, Chevrier A, Dugast C, Layet V, Rossi A, Lidereau R, Frébourg T, et al. Screening BRCA1 and BRCA2 unclassified variants for splicing mutations using reverse transcription PCR on patient RNA and an ex vivo assay based on a splicing reporter minigene. *J Med Genet.* 2008; 45:438–46. <https://doi.org/10.1136/jmg.2007.056895>.
35. Díez O, Gutiérrez-Enríquez S, Ramón y Cajal T, Alonso C, Balmaña J, Llorca G. Caution should be used when interpreting alterations affecting the exon 3 of the BRCA2 gene in breast/ovarian cancer families. *J Clin Oncol.* 2007; 25:5035-6; author reply 5036-8.
36. Nordling M, Karlsson P, Wahlström J, Engwall Y, Wallgren A, Martinsson T. A large deletion disrupts the exon 3 transcription activation domain of the BRCA2 gene in a breast/ovarian cancer family. *Cancer Res.* 1998; 58:1372–75.
37. Santarosa M, Viel A, Boiocchi M. Splice variant lacking the transactivation domain of the BRCA2 gene and mutations in the splice acceptor site of intron 2. *Genes Chromosomes Cancer.* 1999; 26:381–82. [https://doi.org/10.1002/\(SICI\)1098-2264\(199912\)26:4<381::AID-GCC14>3.0.CO;2-N](https://doi.org/10.1002/(SICI)1098-2264(199912)26:4<381::AID-GCC14>3.0.CO;2-N).
38. Thomassen M, Blanco A, Montagna M, Hansen TV, Pedersen IS, Gutiérrez-Enríquez S, Menéndez M, Fachal L, Santamariña M, Steffensen AY, Jønson L, Agata S, Whaley P, et al. Characterization of BRCA1 and BRCA2 splicing variants: a collaborative report by ENIGMA consortium members. *Breast Cancer Res Treat.* 2012; 132:1009–23. <https://doi.org/10.1007/s10549-011-1674-0>.
39. Mavaddat N, Barrowdale D, Andrulis IL, Domchek SM, Eccles D, Nevanlinna H, Ramus SJ, Spurdle A, Robson M, Sherman M, Mulligan AM, Couch FJ, Engel C, et al, and HEBON, and EMBRACE, and GEMO Study Collaborators, and kConFab Investigators, and SWE-BRCA Collaborators, and Consortium of Investigators of Modifiers of BRCA1/2. Pathology of breast and ovarian cancers among BRCA1 and BRCA2 mutation carriers: results from the Consortium of Investigators of Modifiers of BRCA1/2 (CIMBA). *Cancer Epidemiol Biomarkers Prev.* 2012; 21:134–47. <https://doi.org/10.1158/1055-9965.EPI-11-0775>.
40. Oliver AW, Swift S, Lord CJ, Ashworth A, Pearl LH. Structural basis for recruitment of BRCA2 by PALB2. *EMBO Rep.* 2009; 10:990–96. <https://doi.org/10.1038/embor.2009.126>.
41. Park JY, Zhang F, Andreassen PR. PALB2: the hub of a network of tumor suppressors involved in DNA damage responses. *Biochim Biophys Acta.* 2014; 1846:263–75. <https://doi.org/10.1016/j.bbcan.2014.06.003>.
42. Park JY, Singh TR, Nassar N, Zhang F, Freund M, Hanenberg H, Meetei AR, Andreassen PR. Breast cancer-associated missense mutants of the PALB2 WD40 domain, which directly binds RAD51C, RAD51 and BRCA2, disrupt DNA repair. *Oncogene.* 2014; 33:4803–12. <https://doi.org/10.1038/onc.2013.421>.
43. Xia B, Dorsman JC, Ameiziane N, de Vries Y, Rooimans MA, Sheng Q, Pals G, Errami A, Gluckman E, Llera J, Wang W, Livingston DM, Joenje H, de Winter JP. Fanconi anemia is associated with a defect in the BRCA2 partner PALB2. *Nat Genet.* 2007; 39:159–61. <https://doi.org/10.1038/ng1942>.
44. Antoniou AC, Casadei S, Heikkinen T, Barrowdale D, Pylkäs K, Roberts J, Lee A, Subramanian D, De Leeneer K, Fostira F, Tomiak E, Neuhausen SL, Teo ZL, et al. Breast-cancer risk in families with mutations in PALB2. *N Engl J Med.* 2014; 371:497–506. <https://doi.org/10.1056/NEJMoa1400382>.
45. Hartford SA, Chittella R, Ding X, Vyas A, Martin B, Burkett S, Haines DC, Southon E, Tessarollo L, Sharan SK. Interaction with PALB2 is essential for maintenance of genomic integrity by BRCA2. *PLoS Genet.* 2016; 12:e1006236. <https://doi.org/10.1371/journal.pgen.1006236>.

46. Siaud N, Barbera MA, Egashira A, Lam I, Christ N, Schlacher K, Xia B, Jasin M. Plasticity of BRCA2 function in homologous recombination: genetic interactions of the PALB2 and DNA binding domains. *PLoS Genet.* 2011; 7:e1002409. <https://doi.org/10.1371/journal.pgen.1002409>.
47. Menzel T, Nähse-Kumpf V, Kousholt AN, Klein DK, Lund-Andersen C, Lees M, Johansen JV, Syljuåsen RG, Sørensen CS. A genetic screen identifies BRCA2 and PALB2 as key regulators of G2 checkpoint maintenance. *EMBO Rep.* 2011; 12:705–12. <https://doi.org/10.1038/embor.2011.99>.
48. Buisson R, Dion-Côté AM, Coulombe Y, Launay H, Cai H, Stasiak AZ, Stasiak A, Xia B, Masson JY. Cooperation of breast cancer proteins PALB2 and piccolo BRCA2 in stimulating homologous recombination. *Nat Struct Mol Biol.* 2010; 17:1247–54. <https://doi.org/10.1038/nsmb.1915>.
49. Sy SM, Huen MS, Chen J. PALB2 is an integral component of the BRCA complex required for homologous recombination repair. *Proc Natl Acad Sci USA.* 2009; 106:7155–60. <https://doi.org/10.1073/pnas.0811159106>.
50. Foo TK, Tischkowitz M, Simhadri S, Boshari T, Zayed N, Burke KA, Berman SH, Blecula P, Riaz N, Huo Y, Ding YC, Neuhausen SL, Weigelt B, et al. Compromised BRCA1-PALB2 interaction is associated with breast cancer risk. *Oncogene.* 2017; 36:4161–70. <https://doi.org/10.1038/onc.2017.46>.
51. Rigakos G, Razis E. BRCAness: finding the Achilles heel in ovarian cancer. *Oncologist.* 2012; 17:956–62.
52. van Hattem WA, Carvalho R, Li A, Offerhaus GJ, Goggins M. Amplification of EMSY gene in a subset of sporadic pancreatic adenocarcinomas. *Int J Clin Exp Pathol.* 2008; 1:343–51.
53. Cousineau I, Belmaaza A. EMSY overexpression disrupts the BRCA2/RAD51 pathway in the DNA-damage response: implications for chromosomal instability/recombination syndromes as checkpoint diseases. *Mol Genet Genomics.* 2011; 285:325–40. <https://doi.org/10.1007/s00438-011-0612-5>.
54. Walker LC, Fredericksen ZS, Wang X, Tarrell R, Pankratz VS, Lindor NM, Beesley J, Healey S, Chen X, Stoppa-Lyonnet D, Tirapo C, Giraud S, et al; kConFab Investigators. Evidence for SMAD3 as a modifier of breast cancer risk in BRCA2 mutation carriers. *Breast Cancer Res.* 2010; 12:R102.
55. Wong JM, Ionescu D, Ingles CJ. Interaction between BRCA2 and replication protein A is compromised by a cancer-predisposing mutation in BRCA2. *Oncogene.* 2003; 22:28–33. <https://doi.org/10.1038/sj.onc.1206071>.
56. Bièche I, Lidereau R. Increased level of exon 12 alternatively spliced BRCA2 transcripts in tumor breast tissue compared with normal tissue. *Cancer Res.* 1999; 59:2546–50.
57. Eisinger F, Bressac B, Castaigne D, Cottu PH, Lansac J, Lefranc JP, Lesur A, Noguès C, Pierret J, Puy-Pernias S, Sobol H, Tardivon A, Tristant H, Villet R. Identification and management of hereditary predisposition to cancer of the breast and the ovary (update 2004). [Article in French] *Bull Cancer.* 2004; 91:219–37.
58. Gaildrat P, Killian A, Martins A, Tournier I, Frébourg T, Tosi M. Use of splicing reporter minigene assay to evaluate the effect on splicing of unclassified genetic variants. *Methods Mol Biol.* 2010; 653:249–57. https://doi.org/10.1007/978-1-60761-759-4_15.
59. Soukarieh O, Gaildrat P, Hamieh M, Drouet A, Baert-Desurmont S, Frébourg T, Tosi M, Martins A. Exonic splicing mutations are more prevalent than currently estimated and can be predicted by using in silico tools. *PLoS Genet.* 2016; 12:e1005756. <https://doi.org/10.1371/journal.pgen.1005756>.
60. Yeo G, Burge CB. Maximum entropy modeling of short sequence motifs with applications to RNA splicing signals. *J Comput Biol.* 2004; 11:377–94. <https://doi.org/10.1089/1066527041410418>.
61. Desmet FO, Hamroun D, Lalande M, Collod-Bérout G, Claustres M, Bérout C. Human Splicing Finder: an online bioinformatics tool to predict splicing signals. *Nucleic Acids Res.* 2009; 37:e67. <https://doi.org/10.1093/nar/gkp215>.
62. Thompson D, Easton DF, Goldgar DE. A full-likelihood method for the evaluation of causality of sequence variants from family data. *Am J Hum Genet.* 2003; 73:652–55. <https://doi.org/10.1086/378100>.
63. Goldgar DE, Easton DF, Byrnes GB, Spurdle AB, Iversen ES, Greenblatt MS, and IARC Unclassified Genetic Variants Working Group. Genetic evidence and integration of various data sources for classifying uncertain variants into a single model. *Hum Mutat.* 2008; 29:1265–72. <https://doi.org/10.1002/humu.20897>.
64. Walker LC, Whiley PJ, Couch FJ, Farrugia DJ, Healey S, Eccles DM, Lin F, Butler SA, Goff SA, Thompson BA, Lakhani SR, Da Silva LM, Tavtigian SV, et al, and kConFab Investigators. Detection of splicing aberrations caused by BRCA1 and BRCA2 sequence variants encoding missense substitutions: implications for prediction of pathogenicity. *Hum Mutat.* 2010; 31:E1484–505. <https://doi.org/10.1002/humu.21267>.
65. Spurdle AB, Couch FJ, Parsons MT, McGuffog L, Barrowdale D, Bolla MK, Wang Q, Healey S, Schmutzler R, Wappenschmidt B, Rhiem K, Hahnen E, Engel C, et al, and ABCTB Investigators, and EMBRACE Group, and GENICA Network, and HEBON Group, and kConFab Investigators. Refined histopathological predictors of BRCA1 and BRCA2 mutation status: a large-scale analysis of breast cancer characteristics from the BCAC, CIMBA, and ENIGMA consortia. *Breast Cancer Res.* 2014; 16:3419. <https://doi.org/10.1186/s13058-014-0474-y>.
66. Tavtigian SV, Deffenbaugh AM, Yin L, Judkins T, Scholl T, Samollow PB, de Silva D, Zharkikh A, Thomas A. Comprehensive statistical study of 452 BRCA1 missense substitutions with classification of eight recurrent

- substitutions as neutral. *J Med Genet.* 2006; 43:295–305. <https://doi.org/10.1136/jmg.2005.033878>.
67. Vallée MP, Di Sera TL, Nix DA, Paquette AM, Parsons MT, Bell R, Hoffman A, Hogervorst FB, Goldgar DE, Spurdle

AB, Tavtigian SV. Adding in silico assessment of potential splice aberration to the integrated evaluation of BRCA gene unclassified variants. *Hum Mutat.* 2016; 37:627–39. <https://doi.org/10.1002/humu.22973>.