



HAL
open science

Life cycle of 3d data for cultural heritage

Bruno Dutailly, Sylvie Eusèbe, Valentin Grimaud, Nicolas Lefèvre, Mathieu Quantin, Sarah Tournon-Valiente, Mehdi Chayani, Xavier Granier

► **To cite this version:**

Bruno Dutailly, Sylvie Eusèbe, Valentin Grimaud, Nicolas Lefèvre, Mathieu Quantin, et al.. Life cycle of 3d data for cultural heritage: Identify how and when 3D data is produced. Choose 3D file formats for archiving. Define a robust process for producing 3D data and preserving it. Visual Heritage 2018, Nov 2018, Vienne, Austria. hal-01926434

HAL Id: hal-01926434

<https://hal.science/hal-01926434>

Submitted on 26 Nov 2018

HAL is a multi-disciplinary open access archive for the deposit and dissemination of scientific research documents, whether they are published or not. The documents may come from teaching and research institutions in France or abroad, or from public or private research centers.

L'archive ouverte pluridisciplinaire **HAL**, est destinée au dépôt et à la diffusion de documents scientifiques de niveau recherche, publiés ou non, émanant des établissements d'enseignement et de recherche français ou étrangers, des laboratoires publics ou privés.



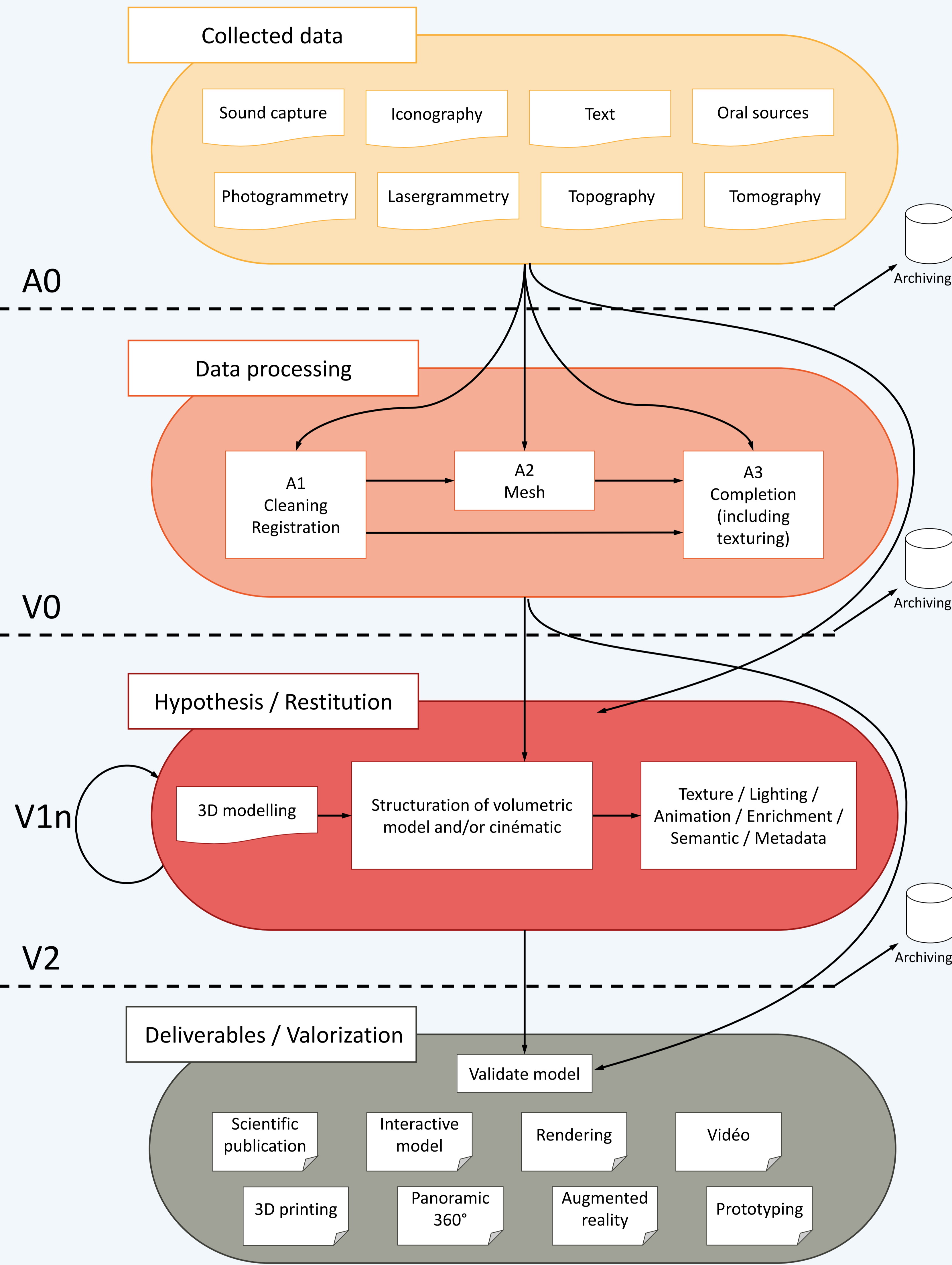
LIFE CYCLE OF 3D DATA FOR CULTURAL HERITAGE

Identify how and when 3D data is produced

Choose 3D file formats for archiving

Define a robust process for producing 3D data and preserving it

SEQUENTIAL GRAPH OF 3D DATA PRODUCTION



CASE STUDIES AND FORMATS



Bruniquel cave FRANCE, Photogrammetry – Archeovision

Text : txt
Images : Jpeg, png, ...
Point cloud : PLY
Sound : Wav
Tomography : in progress



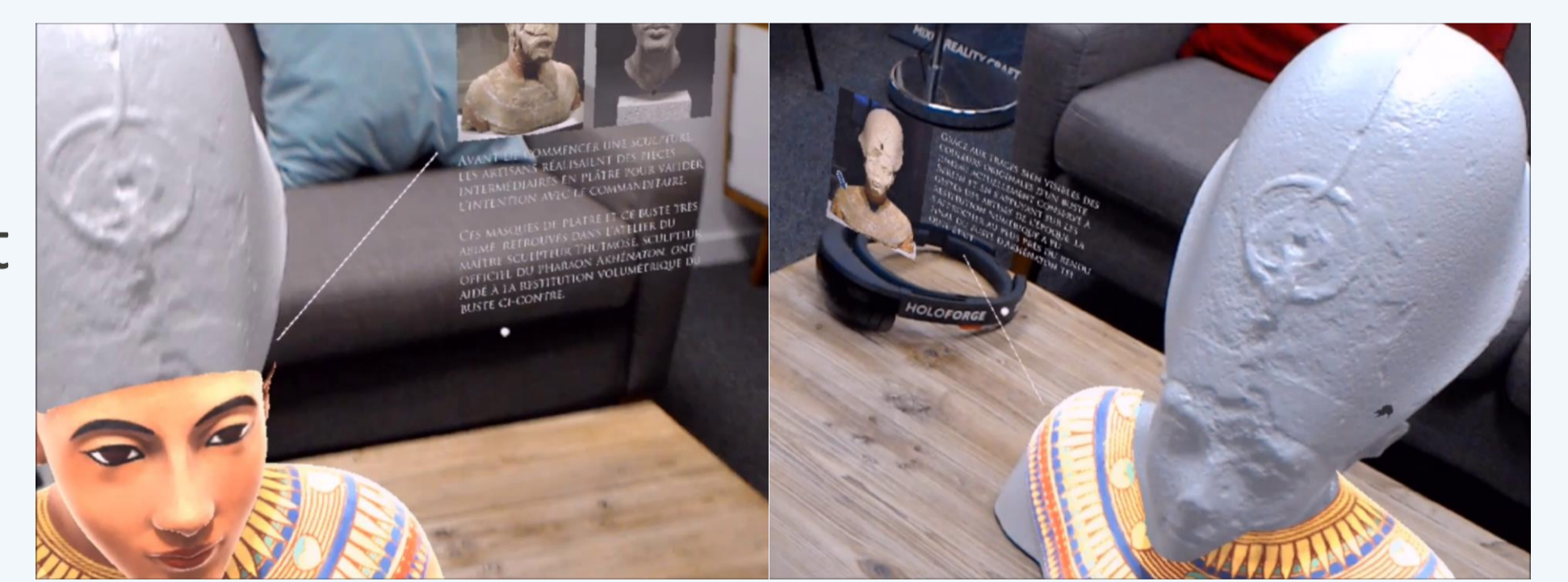
Blaye citadel FRANCE, 31M Points – Archeovision

Point cloud : PLY
Mesh : PLY
Textures : Images



Herculaneum ITALIA, 3D Reconstruction – Archeovision

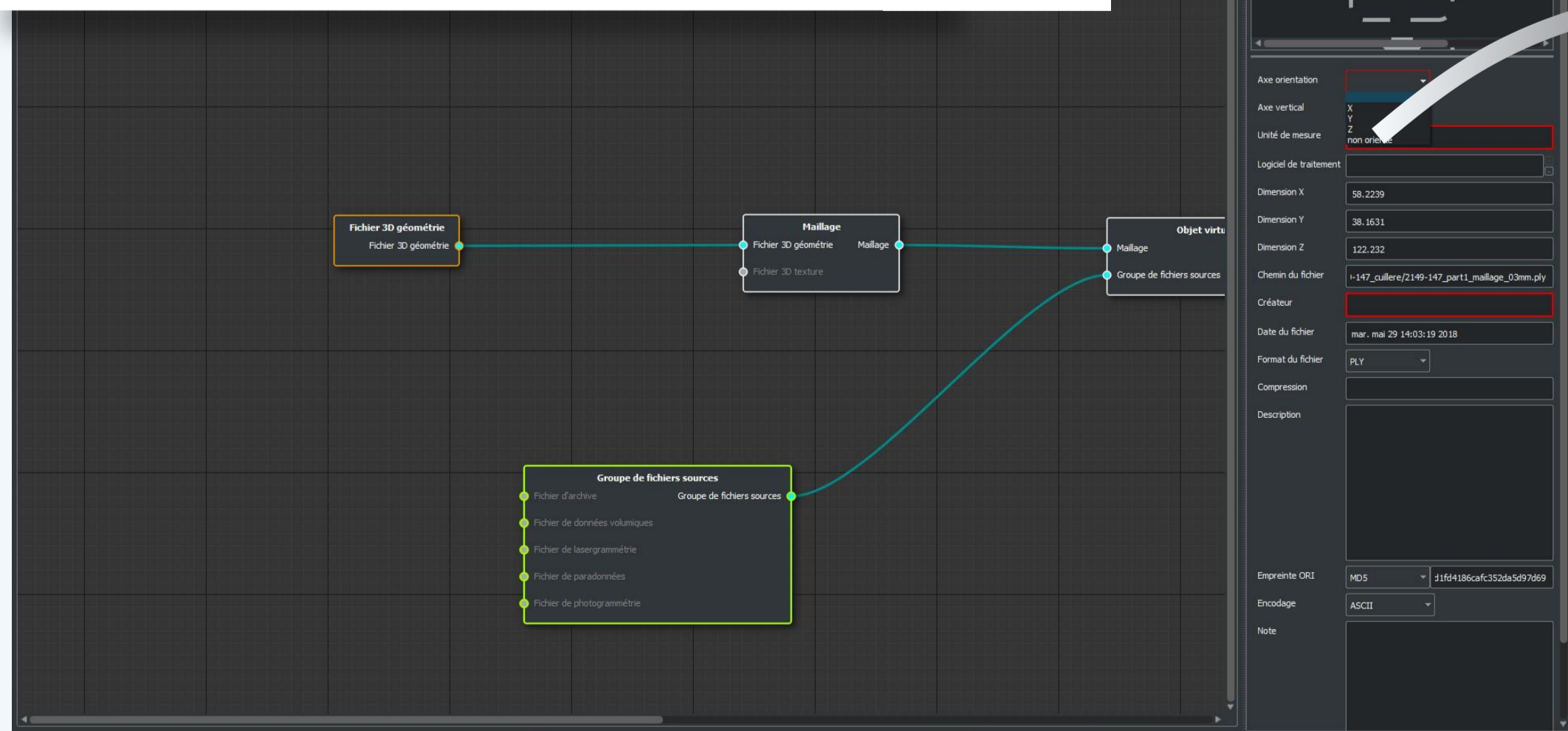
Reconstruction : Collada
Textures : images



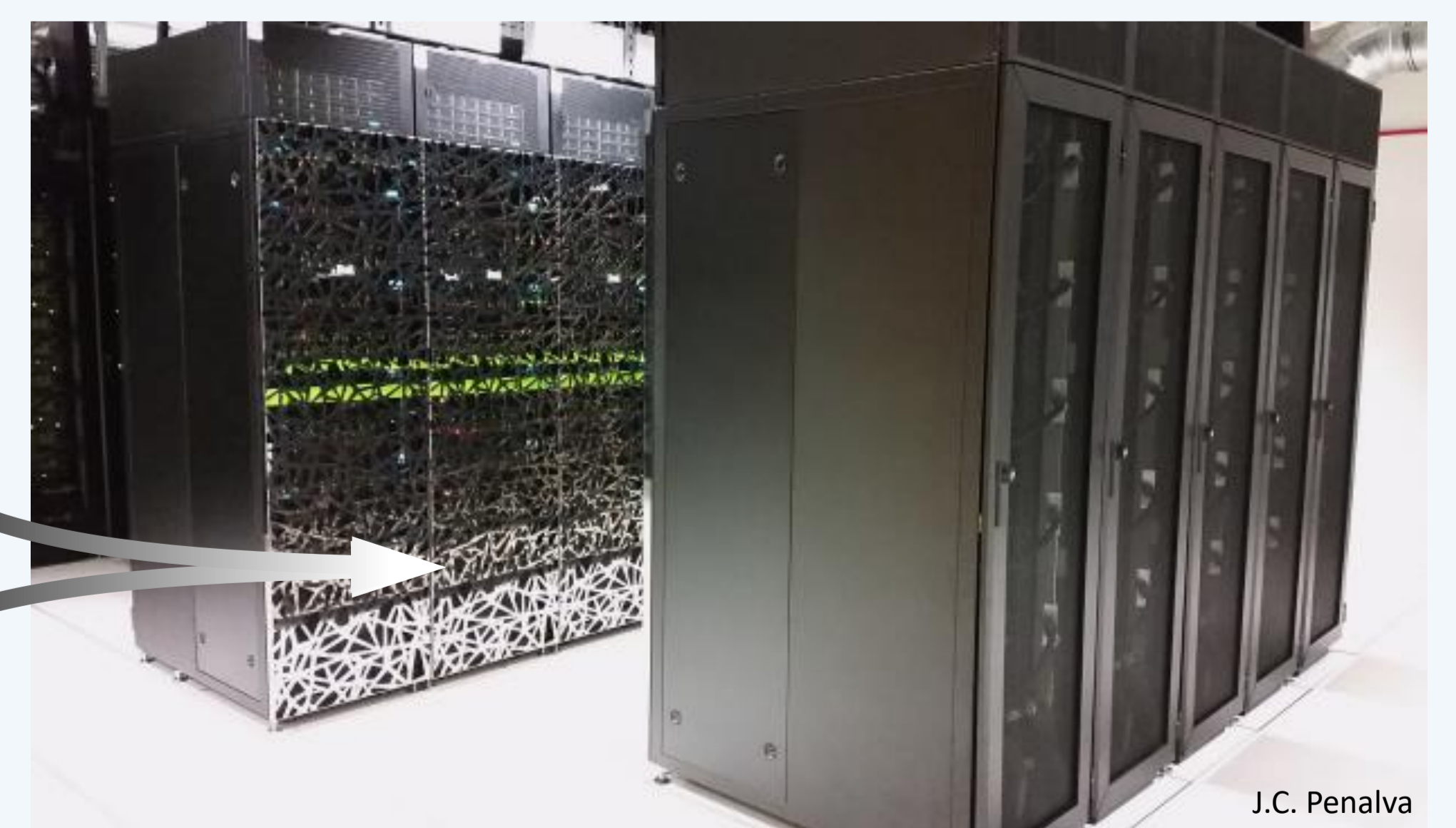
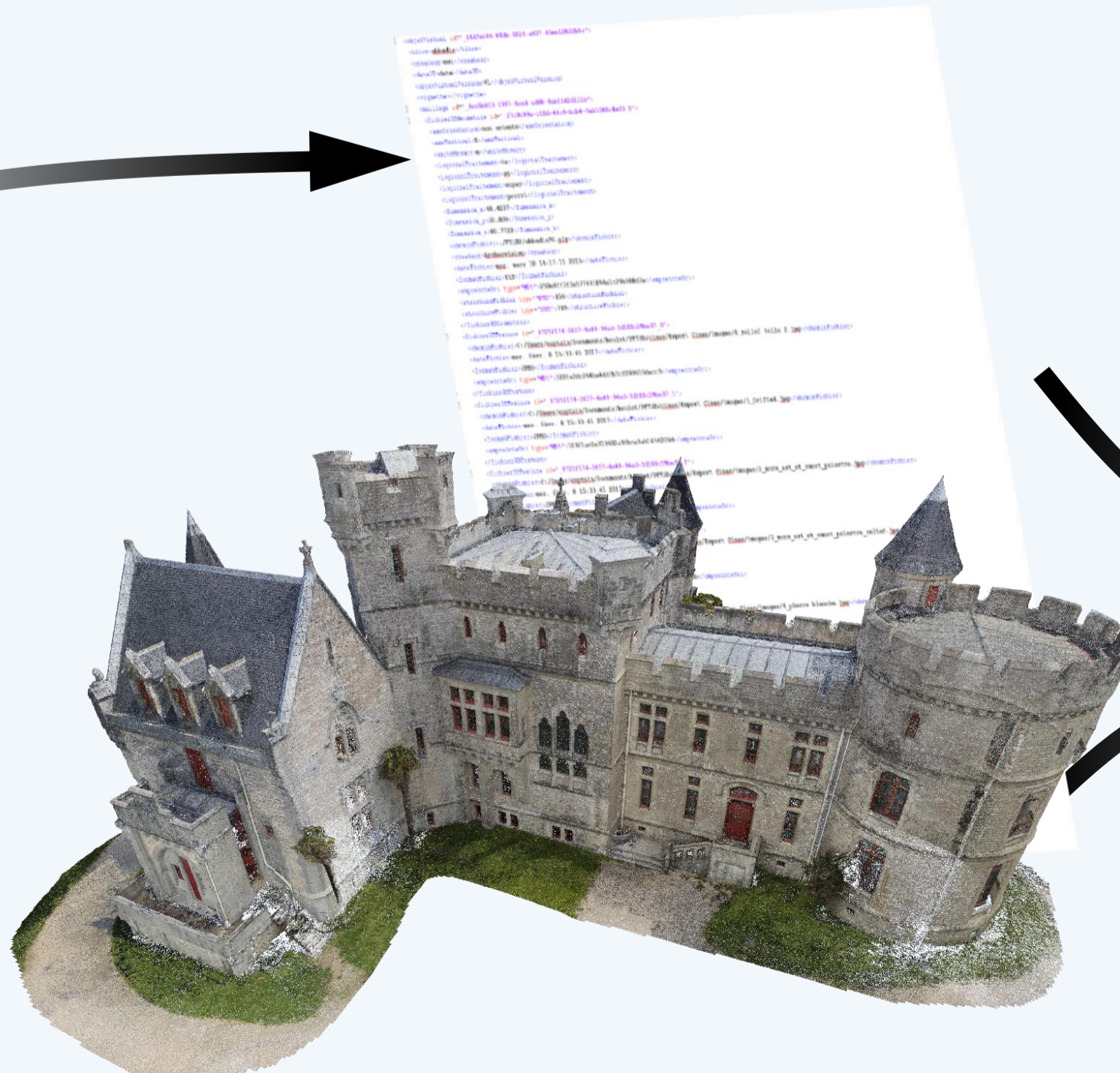
Akhenaton, HoloLens® experience – HoloForge

Any format
No archive

PRODUCE ARCHIVE



Create and add metadata as XML with aLTAG3D



J.C. Penalva

Store 3D data and metadata in CINES data center

