



Propagation of toxic substances in the urban atmosphere: A complex network perspective

Sofia Fellini, Pietro Salizzoni, Lionel Soulhac, Luca Ridolfi

► To cite this version:

Sofia Fellini, Pietro Salizzoni, Lionel Soulhac, Luca Ridolfi. Propagation of toxic substances in the urban atmosphere: A complex network perspective. Atmospheric Environment, 2019, 198, pp.291 - 301. 10.1016/j.atmosenv.2018.10.062 . hal-01925872

HAL Id: hal-01925872

<https://hal.science/hal-01925872>

Submitted on 18 Nov 2018

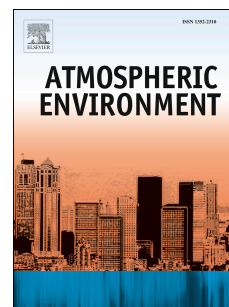
HAL is a multi-disciplinary open access archive for the deposit and dissemination of scientific research documents, whether they are published or not. The documents may come from teaching and research institutions in France or abroad, or from public or private research centers.

L'archive ouverte pluridisciplinaire **HAL**, est destinée au dépôt et à la diffusion de documents scientifiques de niveau recherche, publiés ou non, émanant des établissements d'enseignement et de recherche français ou étrangers, des laboratoires publics ou privés.

Accepted Manuscript

Propagation of toxic substances in the urban atmosphere: A complex network perspective

Sofia Fellini, Pietro Salizzoni, Lionel Soulhac, Luca Ridolfi



PII: S1352-2310(18)30760-X

DOI: <https://doi.org/10.1016/j.atmosenv.2018.10.062>

Reference: AEA 16359

To appear in: *Atmospheric Environment*

Received Date: 16 July 2018

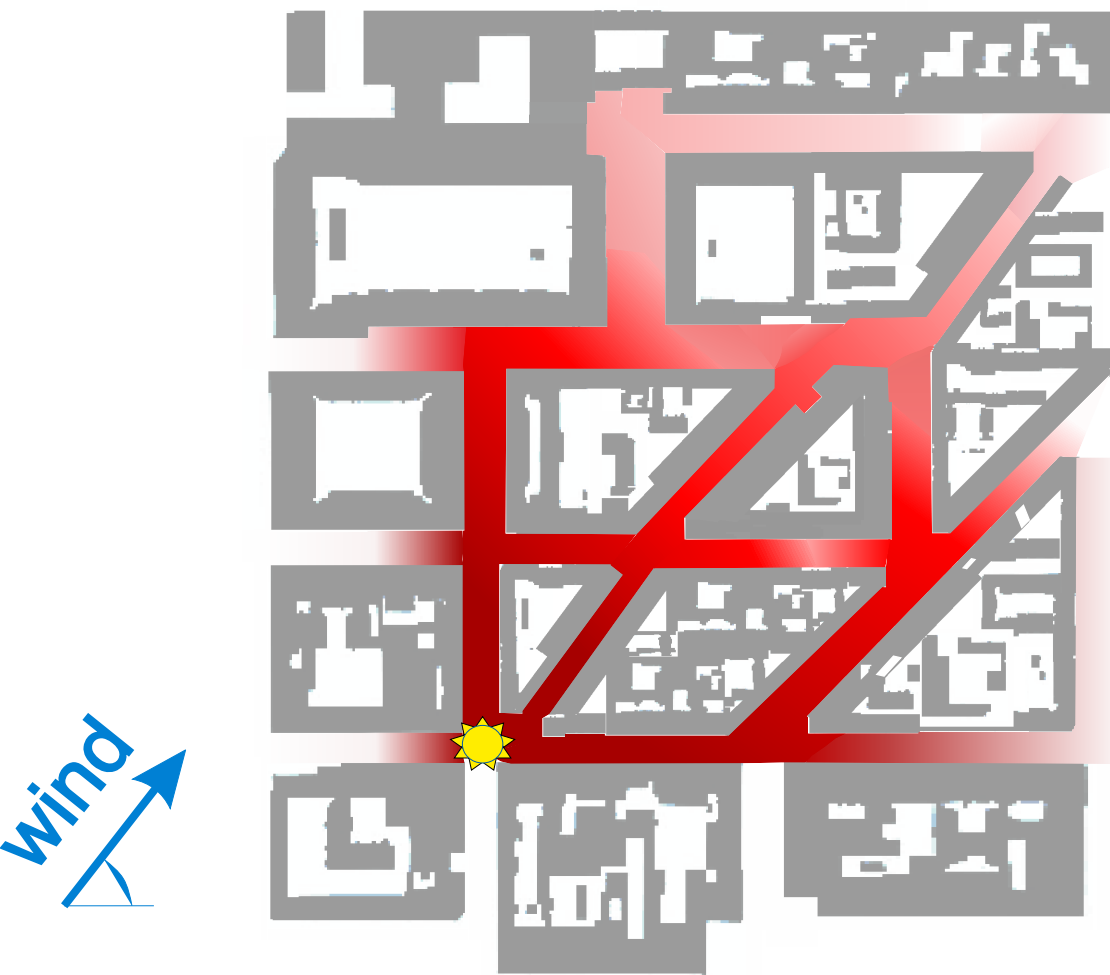
Revised Date: 11 October 2018

Accepted Date: 29 October 2018

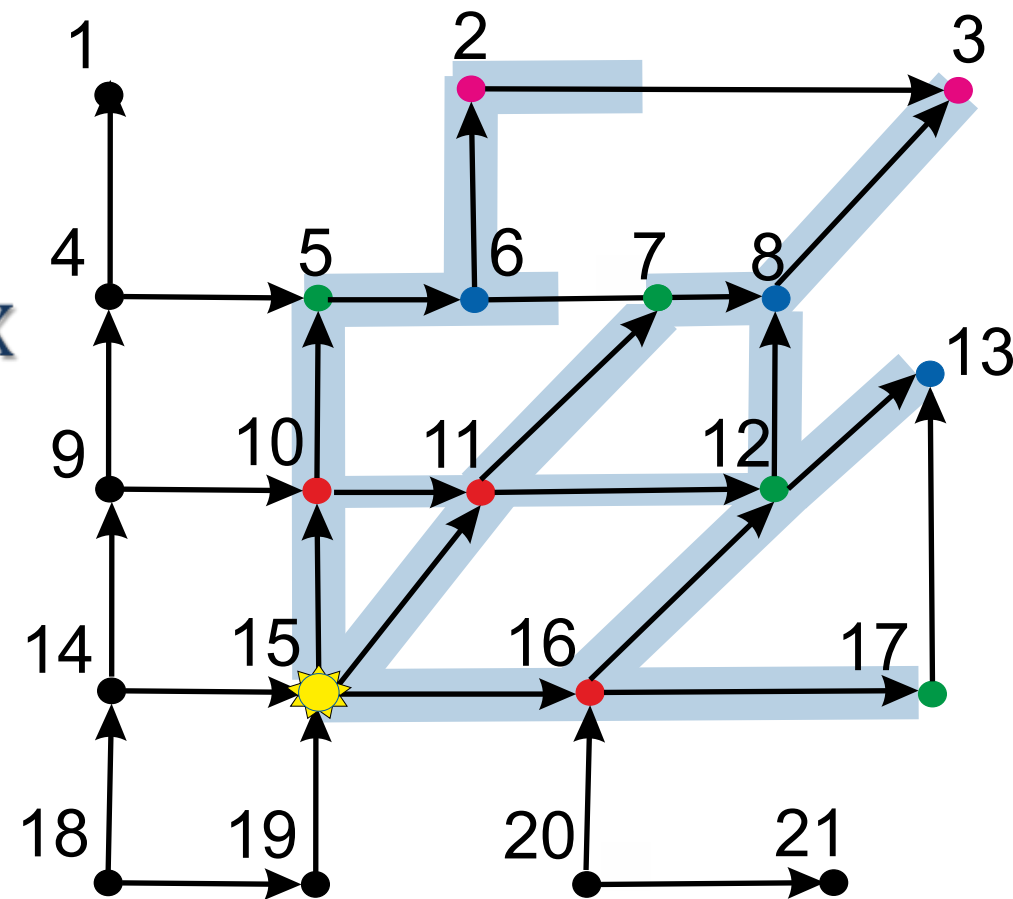
Please cite this article as: Fellini, S., Salizzoni, P., Soulhac, L., Ridolfi, L., Propagation of toxic substances in the urban atmosphere: A complex network perspective, *Atmospheric Environment* (2018), doi: <https://doi.org/10.1016/j.atmosenv.2018.10.062>.

This is a PDF file of an unedited manuscript that has been accepted for publication. As a service to our customers we are providing this early version of the manuscript. The manuscript will undergo copyediting, typesetting, and review of the resulting proof before it is published in its final form. Please note that during the production process errors may be discovered which could affect the content, and all legal disclaimers that apply to the journal pertain.

Dispersion in the urban atmosphere



Spreading process on a complex network



Propagation of toxic substances in the urban atmosphere: a complex network perspective

Sofia Fellini^{a,b,*}, Pietro Salizzoni^b, Lionel Souhac^b, Luca Ridolfi^a

^a*Department of Environmental, Land, and Infrastructure Engineering, Politecnico di Torino, Corso Duca degli Abruzzi 24, 10129 Turin, Italy*

^b*Laboratoire de Mécanique des Fluides et d'Acoustique, UMR CNRS 5509, Université de Lyon, Ecole Centrale de Lyon, INSA Lyon, Université Claude Bernard Lyon I, 36, avenue Guy de Collongue, 69134 Ecully, France*

Abstract

The accidental or malicious release of toxic substances in the urban atmosphere is a major environmental and safety problem, especially in large cities. Computational fluid dynamics codes and simplified modelling tools have been used in the last decades to model pollutant dispersion in urban areas. These studies have shown that propagation is strongly influenced by the layout of buildings and, therefore, by the street topology of the city. This work presents a novel approach to the study of toxic propagation within the urban canopy based on the theory of complex networks. The urban canopy is modelled as a network, where the streets and the street intersections represent respectively the links and the nodes of the network. The direction and the weights of the links contain the geometrical characteristics of the street canyons and their wind conditions, so that all the key variables involved in pollutant dispersion are represented in a single mathematical structure that is a weighted and directed complex network. Thanks to this mathematical interpretation, propagation is modelled as a spreading process on a network and a depth-first search algorithm is used to rapidly delimit the zone of influence of a source node. This zone is the set of streets that are contaminated from the source. As a case study, the proposed model is applied to the urban tissue of the city of Lyon. The algorithm simulates a toxic release in all the nodes of the network and computes the number of people affected by each propagation process. In this way, the nodes with

*Corresponding author

the most dangerous spreading potential are identified and vulnerability maps of the city are constructed. Moreover, various wind and concentration scenarios are easily implemented. The results highlight how the proposed method is effective in assessing the most vulnerable points in a city with a computational time that is up to three orders of magnitude lower than that of existing models. Moreover, the proposed approach paves the way to future applications of tools and metrics from the complex network theory for a deeper comprehension of the mechanisms that drive pollutant dispersion in urban areas.

Keywords: Urban air pollution, Street network, Complex networks, Vulnerability, Accidental releases, Spreading on networks

1. Introduction

Large cities are particularly vulnerable to air pollution as they exhibit both a large number of potential sources and a high density of people exposed (Brunekreef and Holgate, 2002; Heinrich and Wichmann, 2004). Urban air pollution is mainly linked to human activities and in particular to vehicular traffic, heating of buildings and industrial emissions (Mayer, 1999). Moreover, accidental releases such those related to gas leaks, industrial plants or the transport of dangerous goods are particularly critical in densely populated environments. Besides unintentional releases, the current political situation also raises the possibility of terrorist attacks aimed at the dispersal of toxic or pathogenic substances in the air (Tucker, 2000; McLeish, 2017).

For these reasons, local authorities are urged to adopt not only instruments for air quality control but also predictive tools for the management of dangerous situations due to accidental and malicious releases. These actions are in line with the current challenge of building resilient metropolises able to cope with emergencies (Berke et al., 2009; Ahern, 2011).

Dispersion models are commonly used to predict urban pollution and to estimate concentration of toxic substances. Computational fluid dynamics (CFD) simulations are the most accurate tool for modelling dispersion in a complex

59 geometry like the urban fabric, since they solve the velocity and the concen-
 60 tration fields in the whole domain (Blocken, 2015). However, these models
 61 require a huge computational cost and therefore long simulation times and high
 62 performance computers. To reduce the computational cost, several modelling
 63 approaches have been developed in the last decades (Di Sabatino et al., 2013).
 64 These include street network models (e.g., Carruthers et al., 2000; Soulhac et al.,
 65 2011) based on a simplified description of the building geometry and modelling
 66 the mass exchange within and above the urban canopy by parametrising a few
 67 key transfer processes. Their formulation rely on the basic idea that the urban
 68 structure of the city, the orientation of the streets and their connectivity play a
 69 major role in determining the intensity of these transfer processes. The street
 70 network approach was originally proposed by Soulhac (2000), who developed
 71 the operational model SIRANE (Soulhac et al., 2011). Recently, Kim et al.
 72 (2018) presented a multi-scale model of urban air pollution that combines SIR-
 73 ANE with a comprehensive treatment of atmospheric chemistry. On the other
 74 hand, several efforts have been devoted to further simplify the model. Hamlyn
 75 et al. (2007) constructed a simple street network model for the dispersion of
 76 pollutants within a regular array of cubic obstacles. Belcher et al. (2015) and
 77 Goulart et al. (2018) derived an analytical formulation for atmospheric disper-
 78 sion in a regular geometry and showed that the process can be described by basic
 79 geometrical and flow properties. Tzella and Vanneste (2016) developed a large
 80 deviation theory for concentration prediction in a rectangular network. These
 81 studies have highlighted the need for viable models able to capture the funda-
 82 mental aspects of pollutant dispersion within urban-like geometries, in order to
 83 give quantitative estimates of mean concentration with a reduced computational
 84 cost and starting from few input data.

85 In this framework, we introduce a novel approach for the assessment of the
 86 vulnerability of a dense city to the release of harmful airborne pollutants. Going
 87 beyond the representation of the urban spatial domain as a street network, in
 88 this work all the key variables involved in the dispersion process are viewed as
 89 properties of a complex network. Thanks to this mathematical interpretation,

the modern techniques of the theory of complex networks can be adopted and propagation phenomena in the streets are modelled as a transport process on a network.

In complex network theory (e.g., Boccaletti et al., 2006; Newman, 2010), complex systems are traced back to a set of entities (nodes) that interact with each other. Interactions are represented as links between the nodes and may have weights that describe the strength of these interactions. Complexity does not lie in the elements that form the system, but rather in their topology and within the pattern of their interconnections. In the last few years, the theory of complex networks has gained a great deal of attention in countless fields, from the social sciences (e.g., Borgatti et al., 2009) to engineering (e.g., Carvalho et al., 2009; Yazdani and Jeffrey, 2011; Giustolisi and Ridolfi, 2014). Recently, a network approach has been adopted for the description of geophysical fluid motion and associated transport phenomena. Gelbrecht et al. (2017) have proposed a complex network representation of wind flows to study regional meteorology systems, while Ser-Giacomi et al. (2015) have represented mixing and dispersion processes in the Mediterranean as a transportation network.

In this work we focus on the pollutant dispersion at the local urban scale. The topology of the city is modelled as a network, within which the propagation of the airborne toxic pollutant occurs. The streets and the street intersections are respectively the links and the nodes of the network. The direction and the weight of the links contain the fluid-dynamical properties of the flow within the streets and the geometrical characteristics of the bordering buildings. In this way, the topology of the city and the wind conditions along the streets are all represented in a single mathematical structure, that is a weighted and directed complex network. Differently from street network models as SIRANE, a numerical solution of a system of mass balance equations is here not required. Given an initial point, i.e. a pollutant source, propagation along the streets is modelled as an epidemic on a network. In particular, as in epidemic applications (Newman, 2002), a search algorithm on networks is adopted to delimit the zone of influence of a source node, that we define as the part of the network affected

by toxic propagation. By counting the number of people that reside in the zone of influence, a vulnerability index of the source node can be estimated. The procedure is applied to each node of the network and vulnerability maps are easily constructed, in order to reveal at a glance the urban areas with the highest spreading potential.

The method is much faster than previous models, and can be applied to entire cities with a low computational cost and with few input parameters. Given the simplified assumptions underlying the method, the results are not expected to be as accurate as the ones obtainable with more complete models. However, a very detailed estimate of pollutant concentration in every point of the city is generally not required for the assessment of urban vulnerability. The aim of this work is to provide a reliable and rapid technique to identify the most vulnerable points in the city, i.e. the source points from which the toxic spreading can affect the greatest number of people, and to understand the effect of meteorological conditions (namely wind direction) on urban vulnerability. Moreover, this work lays the foundation for further applications of tools from complex network theory. In particular, the new complex network perspective facilitates the investigation of the fundamental aspects that drive dispersion in the urban environment. In fact, the model outcome is not the overall result of a set of parametrizations and mass balance equations but is the result of a spreading process on a network characterized by well defined adjacency and weight matrices. Simple metrics (e.g., centrality metrics) and analyses from complex network theory can thus be applied to understand the role of the key variables (e.g., the topology of the city, the fluid-mechanical and geometrical characteristics of the streets) in the dispersion process.

The work is organized as follows. In Section 2, we describe the physical assumptions adopted to model pollutant propagation in the urban canopy. Then, the network perspective is introduced in Section 3. The basic steps to construct the street network and its weight matrices are thus described and the algorithm for spreading on networks is presented. Subsequently, the proposed general method is applied to the city of Lyon (France). Vulnerability maps

for a district of Lyon are shown and analysed in Section 4. Finally, the main conclusions obtained from the present work are summarized.

2. Physical assumptions about the propagation of a toxic substance in the urban environment

Transport and mixing processes in the urban environment are characterized by complex fluid structures due to the interaction between the atmospheric flow and the city. The presence of buildings and vegetation highly affects the structure of the urban boundary layer, characterized by the generation of a shear layer at the top of the canopy, wake diffusion behind buildings, and form drag due to the pressure differences across the roughness elements (Roth, 2000). Moreover, the flow field in the streets is altered by the convective fluxes due to the differential solar irradiance on building walls and to the heat sources related to human activities (Oke, 1982; Arnfield, 2003). The simulation of all these dynamical effects on the flow field within the urban canopy is nowadays a challenge for modellers that adopt sophisticated computational tools, typically CFD codes (Tominaga and Stathopoulos, 2012). These require a huge amount of input data and high computational costs, which limit their use when analysing a large number of emission scenarios. In this latter case, alternative simulation strategies should be adopted, based on a simplified description of the flow and of the dispersion phenomena occurring within the urban area.

The physical assumptions for the propagation model presented in this work are inspired by the street network model approach (e.g., Namdeo and Colls, 1996; Soulhac et al., 2011). In street network models, the geometry of the urban canopy is simplified to a network of streets (Fig. 1.a), and the streets are represented as urban canyons, i.e. cavities of rectangular section with length l , height h and width w (Fig. 1.b). Following the approach of Soulhac et al. (2011), the main transport phenomena for an airborne pollutant in the urban canopy are (i) the advective mass transfer along the street due to the mean wind along the longitudinal axis, (ii) the vertical transfer from/toward the external

181 atmosphere and (iii) the transport at street intersections. In street network
 182 models, pollutant dispersion is then described by a series of mass balance equa-
 183 tions within streets, at street intersections and above the urban canopy. This
 184 system of equations is numerically solved to evaluate pollutant concentrations
 185 within the streets and above them.

186 To assess the vulnerability of urban areas to toxic releases, a detailed quan-
 187 tification of the concentration in the streets and in the street intersections is gen-
 188 erally not required. Rather, an operational model based on few input data and
 189 with very low computational cost is sought, so that it can be easily and quickly
 190 implemented for the assessment of large city vulnerability, even in emergency
 191 situations. For these reasons, numerical solution of mass balance equations and
 192 the estimation of a large number of physical parameters are here avoided. Con-
 193 versely, we introduce an analytical solution for dispersion along a street canyon,
 194 we adopt a simplified model for propagation in street intersections and we use
 195 concepts from complex network theory to simulate toxic spreading from one
 196 street to the adjacent ones. To this aim, further simplifications are required
 197 compared to those adopted in well-known street network models (e.g., Soulhac
 198 et al., 2011). These simplifications concern the physico-chemical processes of
 199 pollutants in the street canyons, vertical transfers between the canyon and the
 200 atmosphere, and pollutant fluxes in the intersections.

201 In the following, the transport mechanisms along a street canyon and at
 202 street intersections are described in detail. The adopted physical assumptions
 203 are introduced and discussed. The emission scenario consists of a release from a
 204 point source (s in Fig. 1) at ground level within the urban canopy. The external
 205 wind blowing on the city with direction Φ is the driving force for propagation
 206 processes.

207 *2.1. Transport along a street canyon*

208 Consider a source s releasing a gaseous substance that results in a concen-
 209 tration c_0 at the beginning of a street canyon, as illustrated in Fig. 1.b-c.
 210 The main transport processes are the advective flux along the longitudinal axis,

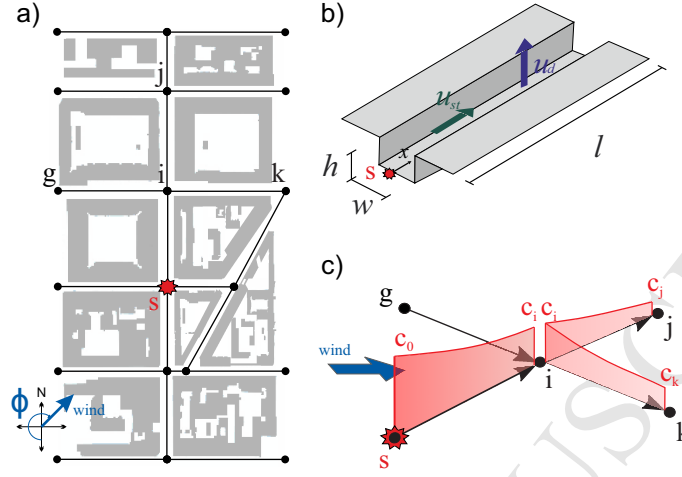


Figure 1: a) Toxic source s within a network of streets. Propagation is driven by the wind blowing on the city with direction Φ . b) Representation of a street canyon with the main variables of the model. c) Transport of a contaminated flow in street intersections.

and the vertical turbulent exchanges between the street and the overlying atmosphere (Soulhac et al., 2013). In fact, turbulent longitudinal diffusion is marginal compared to the longitudinal advection, while physico-chemical processes are generally negligible as their typical time scales are longer than the time needed for propagation. Under these assumptions, the transport along a street canyon can be modelled with the one-dimensional transport equation

$$\frac{\partial c}{\partial t} + u_{st} \frac{\partial c}{\partial x} + \frac{u_d}{h} (c - c_{ext}) = 0, \quad (1)$$

whose solution is the function $c(x, t)$, i.e. the concentration along the longitudinal coordinate x over time t .

The first two terms in (1) describe the advective transport driven by the spatially averaged wind velocity along x (u_{st}). This velocity is assumed to be given by a balance between the stress imposed at the canopy top by the external atmospheric flow and the drag due to the roughness of the canyon walls (neglecting the role of pressure gradients). Under this assumption, Soulhac et al. (2008) derived an analytical formulation for u_{st} , as a function of the external wind intensity and direction, the geometry of the street canyon and the

aerodynamic roughness of building walls (see Appendix A). The third term in (1) models the mass transfer from/to the canyon to/from the overlying atmosphere by means of a bulk exchange velocity u_d (Salizzoni et al., 2009; Soulhac et al., 2011) estimated as

$$u_d = \frac{u_*}{\sqrt{2\pi}}, \quad (2)$$

where u_* is the friction velocity of the overlying boundary layer flow. We underline that the specific physical models adopted here for u_{str} and u_d could be easily replaced if better ones become available. Moreover, a simple model for physico-chemical transformation could be easily implemented in (1) by adding a physico-chemical transformation rate to the exchange velocity u_d .

Since our focus is on a localized ground-level release only - therefore inducing maximal concentration at the street level -, we will assume that the vertical flux of pollutants from the canopy to the external atmosphere will induce significantly low concentrations, c_{ext} , above roof level, due to the high dilution occurring in the lower part of the boundary layer compared to that within the streets. As a consequence, we will consider that $c - c_{ext} \simeq c$, therefore ignoring the role of any re-entrainment of mass from the external flow to the streets. The effects of re-entrainment have been discussed by different authors (Hamlyn et al., 2007; Belcher et al., 2015; Goulart et al., 2018). Their studies highlighted that re-entrainment effects are physically significant in the so called far-field region, i.e. the region extending from the third intersection downwind the source. However, the vertical flux is in general less than a quarter of the horizontal advective flux (Goulart et al., 2018). For these reasons, the possible inclusion of re-entrainment effects in the model is not expected to bring significant improvements to the results.

Equation (1) was analytically solved for both an instantaneous and a continuous release in the source (see Appendix B). In the first case, the initial condition is set as a rectangular pulse with height c_0 . The solution describes this initial step travelling along the street with velocity u_{st} and undergoing an

254 exponential decay of concentration. In the second case, the initial condition is a
 255 continuous release with constant concentration c_0 . The solution is a front that
 256 spreads along the street with velocity u_{st} . Although the analytical solutions are
 257 different, the concentration at the end of the street ($x = l$) in both cases is the
 258 same:

$$c_l \left(x = l, t = \frac{l}{u_{st}} \right) = c_0 e^{-\frac{l}{u_{st}} \frac{u_d}{h}}. \quad (3)$$

259 Thus, the concentration at the beginning of the street (c_0) undergoes an expo-
 260 nential decay driven by the ratio between the advection time (l/u_{st}) that the
 261 toxic front spends to reach the end of the street, and the vertical transfer time
 262 (h/u_d). The terms in the exponent summarize all the information about the
 263 geometry of the canyon and the flow dynamics in it.

264 2.2. Transport in the street intersections

265 The flow field in the street intersections is driven by complex physical pro-
 266 cesses that depend on multiple geometrical and meteorological parameters. Sev-
 267 eral studies (e.g. Hunter et al., 1990; Robins et al., 2002; Soulhac et al., 2009)
 268 have demonstrated that even slight variations in the building geometry and
 269 wind direction can affect significantly the redistribution of the incoming fluxes
 270 over the outgoing fluxes. On the basis of these observations, Soulhac et al.
 271 (2009) have developed a model, quantifying the balance of the time-averaged
 272 incoming and outgoing fluxes at the street intersection. This model requires
 273 the estimation of exchange coefficients between the streets, and the formula-
 274 tion of a mass balance equation for each intersection. In street network models
 275 (e.g., SIRANE), these balance equations are solved numerically together with
 276 the equations for transport along the canyons.

277 As mentioned in Section 2, our aim is to propose a simplified methodology
 278 for pollutant dispersion modelling, that simulates propagation as a spreading
 279 process on a network. In order to adopt this approach, an analytical solution
 280 for the physical transport mechanisms is required. For these reasons, we define

a simple exchange model in the intersections that avoid the use of mass balance equations. Given the uncertainty of flow redistribution in street intersections, a conservative approach is adopted in developing this minimalistic model.

Consider a simple intersection with a single incoming and one outgoing street canyon. The volumetric air flow rate entering the intersection with a concentration c_{in} is Q_{in} , while the volumetric air flow rate outgoing the intersection with a concentration c_{out} is Q_{out} . Two cases are possible for the mass balance in the intersection. In the first case, the mass flow rate from the incoming canyon ($\dot{m}_{in} = c_{in}Q_{in}$) is lower than the mass flow rate toward the outgoing canyon ($\dot{m}_{out} = c_{out}Q_{out}$). In order for the mass balance to be satisfied, an external mass flow rate (\dot{m}_{ext}) from the atmosphere above the canopy enters the intersection vertically with a volumetric air flow rate Q_{ext} and a concentration c_{ext} , so that

$$\dot{m}_{in} + \dot{m}_{ext} = \dot{m}_{out} \rightarrow c_{in}Q_{in} + c_{ext}Q_{ext} = c_{out}Q_{out}. \quad (4)$$

In Section 2.1, we stated that re-entrainment from the atmosphere is negligible in our model. Thus, the mass flow rate from the atmosphere makes a zero contribution in (4). The concentration c_{out} at the beginning of the street outgoing the intersection is therefore given by $c_{out} = c_{in}Q_{in}/Q_{out}$. As the volumetric flow rate balance in the intersection is $Q_{in} + Q_{ext} = Q_{out}$, the ratio Q_{in}/Q_{out} is lower than 1 and thus $c_{out} < c_{in}$. In the second case, $\dot{m}_{in} > \dot{m}_{out}$ and the mass flow rate \dot{m}_{ext} leaves the intersection vertically, in order for the mass balance to be satisfied:

$$\dot{m}_{in} = \dot{m}_{ext} + \dot{m}_{out} \rightarrow c_{in}Q_{in} = c_{ext}Q_{ext} + c_{out}Q_{out}. \quad (5)$$

We consider that the concentration leaving the intersection is the same for both the upwards flow and the flow towards the outgoing street canyon, i.e. $c_{ext} = c_{out}$. Applying (5) and the volumetric flow rate balance equation ($Q_{in} = Q_{out} + Q_{ext}$), we find that $c_{out} = c_{in}$.

These arguments show that in the case of an intersection with a single in-

307 coming and one outgoing street canyon, the concentration c_{out} is equal or lower
 308 than the concentration c_{in} . To maintain a conservative approach, in our model
 309 we assume that the concentration of pollutants at the beginning of the street
 310 outgoing the intersection is the one at the end of the incoming contaminated
 311 canyon.

312 In the case of several streets crossing, we assume that when a contaminated
 313 puff with concentration c_{in} reaches the intersection, then the concentration at
 314 the beginning of the streets exiting the intersection is c_{in} . According to this
 315 assumption, we consider that when a contaminated flow reaches the intersection,
 316 it does not divide between the different outgoing streets but tends to spread
 317 towards one of them. Given the uncertainty associated with the trajectory taken
 318 by the pollutant puff (Scaperdas, 2000), we consider all the possible statistical
 319 realizations, and thus we assume that all the outgoing streets are contaminated
 320 by the incoming concentration c_{in} .

321 The assumptions adopted for the transport in street intersections are clearly
 322 illustrated in Fig.1c. The contaminated flow from street (s, i) propagates to-
 323 wards streets (i, j) and (i, k) . According to this scheme, the concentration at
 324 the beginning of streets (i, j) and (i, k) is the one at the end of street (s, i) .

325 **3. A network perspective**

326 In the model presented above, toxic substances move in the urban environ-
 327 ment driven by the wind blowing along the street canyons. The street canyons
 328 behave like upward leaking transport channels and their geometry, position and
 329 connectivity strongly influence the propagation. In big cities, streets cross each
 330 other to compose intricate patterns (Fig. 2). Given the spatial extent and the
 331 high number of elements, these urban fabrics can be seen as complex networks
 332 (Porta et al., 2006; Barthélemy, 2011). Links stand for the street canyons,
 333 while nodes represent the street intersections. The direction and the weight of
 334 the links describe the geometrical and fluid-dynamical properties of the street
 335 canyons. Within this approach, the tools of network theory provide interesting

information about the propagation phenomena.

3.1. Construction of the network

The urban canopy is modelled as a network of N nodes (intersections) and M links (streets). Fictitious nodes can be created to divide a street into two links in case there is a significant change in the street properties. Each link is directed according to the orientation of the mean wind along the street (u_{st}). Thus, the network structure represents both the topological properties of the urban fabric and the directions in which the propagation processes take place. The connectivity of the street canyons is described by the adjacency matrix \mathbf{A} , a $N \times N$ square matrix whose element A_{ij} is equal to 1 if a directed link from node i to node j exists, is equal to 0 otherwise (see Appendix C for an example of adjacency matrix). Since the links have a specific direction, the adjacency matrix is asymmetric.

According to this network representation, the geometry and fluid-dynamical properties of the street canyons are stored efficiently in matrices. \mathbf{L} and \mathbf{H} are the symmetrical matrices of the length of the streets (l) and the average height of the buildings overlooking the streets (h). The wind velocity along the streets (u_{st}) and the velocity of the vertical transfer towards the external atmosphere (u_d) are enclosed in the matrices \mathbf{U} and \mathbf{U}_d .

As mentioned in the Introduction, the main purpose of this work is to establish a methodology for the rapid assessment of urban vulnerability to the ground-level release of toxic gases. The vulnerability index (V_s) for a generic node s can be defined as the number of people affected by the toxic propagation if the release takes place in s . The adopted network approach and matrix notation make it easy to calculate V_s as follows,

$$V_s = \sum_i^N \sum_j^N D_{ij} P_{ij}, \quad (6)$$

where \mathbf{P} is the matrix that associates at each link (i, j) the number of inhabitants per unit street length and \mathbf{D} is the matrix that associates at each link (i, j)

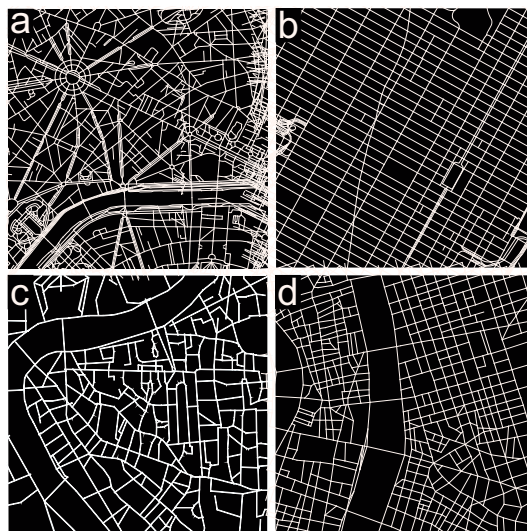


Figure 2: Snapshot of the street network of Paris (a), New York (b), Rome (c), and Lyon (d).

the contaminated length of the street. This last matrix represents the zone of influence of the source node. The meaning of this matrix and its construction process will be widely described in Subsections 3.2 and 3.3.

An interesting advantage of this compact notation is that changes to the network properties can be easily implemented. By modifying matrices \mathbf{U} and $\mathbf{U_d}$, we can simulate different meteorological scenarios, while variations in population distribution (e.g., differences between weekdays and holidays) can be considered by adjusting \mathbf{P} . Furthermore, new buildings and structural changes are included in the model by revising the single elements of \mathbf{L} and \mathbf{H} .

3.2. Propagation of a toxic substance in the street network

Consider the release of a toxic substance in a street intersection (see Fig. 3.a). According to the hypotheses of our model (Section 2), (i) the substance propagates along the adjacent streets depending on the direction of the wind, (ii) the concentration decays exponentially along the streets, (iii) the concentration at the end of each street can be estimated using (3), (iv) the concentration remains unchanged in the street intersections, and (v) from a contaminated street intersection the gas spreads further to the adjacent streets.

Given this description, the pollutant dispersion within the canopy can be then easily seen as a spreading process on a network (e.g., Newman, 2002; Comin and da Fontoura Costa, 2011). In Fig. 3.b the urban canopy is represented as a network. The links are directed according to the direction of the wind in the streets and the release is modelled as a source node s . From a network perspective, transport from s towards a generic node u is possible if there is a link directed from s to u , i.e. if (i) the two nodes are physically connected by a street canyon, and (ii) the wind is blowing from the source towards the target node. Once infected, the target node u is modelled as a new source and the spreading process carries on towards the farthest nodes. According to this scheme, propagation is a recursive process that spontaneously expands to the topological boundaries of the network. Physically, the extent of the contaminated zone can be delimited based on a threshold concentration value c_{th} : when the concentration falls below c_{th} , the contamination process is irrelevant. Thus, a stopping rule for the spreading process on the network is introduced: at each propagation hop the concentration at the target node is estimated. If this concentration is higher than c_{th} , then the propagation carries on.

Considering the example in Fig. 3.b, a toxic substance is released in the source node $s = 15$ and propagates towards the first neighbours of s : nodes 10, 11, and 16. The concentration in the first neighbours is evaluated using Equation (3), as a function of the geometrical and wind characteristics of the street canyons associated to links (15,10), (15,11) and (15,16). Since the concentration in the first neighbours is greater than the predefined threshold c_{th} , nodes 10, 11 and 16 act as source nodes and the spreading process carries on towards the second neighbours of s . In the same way, the third and fourth neighbours are affected by the toxic propagation until the concentration in the nodes falls below c_{th} .

According to this network interpretation, the spreading of a toxic gas in the urban environment is governed by two properties of the network: (i) the topological connectivity of the network, given by its adjacency matrix \mathbf{A} , and (ii) the concentration decay along the links, given by a combination of the

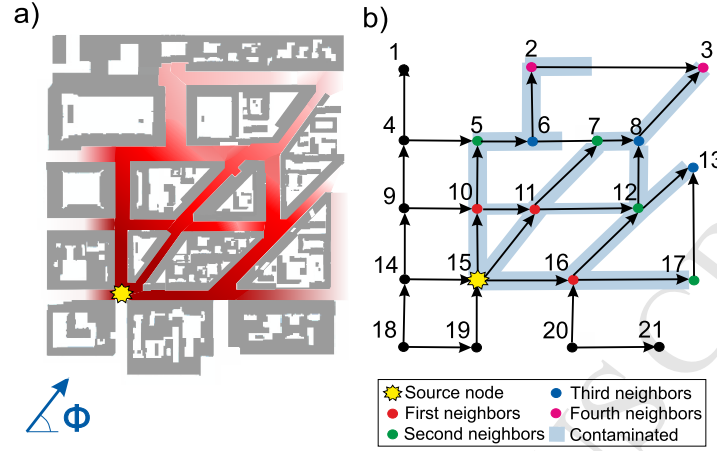


Figure 3: Analogy between the physical propagation of a toxic substance in the urban environment (a) and the spreading process on a network (b). Φ is the direction of the external wind blowing on the city.

geometrical characteristics and the flow dynamics in the street canyons.

This spreading results in the zone of influence of the source node s , i.e. the set of links contaminated from the propagation process originated in s (the elements highlighted in blue in Fig. 3). The number of people living in the zone of influence represents the vulnerability index of s (V_s). Notice that this index contains both information on population density and meteorological conditions in the city. In fact, as will be shown in the following sections, its value changes drastically with the wind direction.

3.3. Algorithm

Given a source node s with a concentration c_s , the set of its first neighbours $N_1(s)$ can be derived from the non-zero elements of the s -th row of the adjacency matrix \mathbf{A} . In Fig. 3, $s = 15$ and thus $N_1(s) = \{10, 11, 16\}$. For each node u belonging to the set $N_1(s)$, the algorithm calculates the distance D_{su}^{pot} . This length is the potential distance (hence the superscript *pot*) that the contaminated front can reach along the link (s, u) with a concentration higher

than the predefined threshold c_{th} . According to (3), D_{su}^{pot} is

$$D_{su}^{pot} = -\frac{H_{su}}{U_{d,su}} U_{su} \log\left(\frac{c_{th}}{c_s}\right), \quad \forall u \in N_1(s). \quad (7)$$

In general, D_{su}^{pot} is different from the physical length of the street (L_{su}) associated to the link (s, u) . D_{su}^{pot} is lower than L_{su} if the concentration undergoes the threshold c_{th} before the propagation front has travelled the entire street. Conversely, it is higher if the front reaches node u with a concentration above the threshold. As a consequence, the effective contaminated distance (D_{su}) is the minimum between the reachable distance D_{su}^{pot} and the effective length of the street, i.e.

$$D_{su} = \min[D_{su}^{pot}, L_{su}] \quad (8)$$

If $D_{su} = L_{su}$, the substance has reached the target node u with a concentration equal to or higher than c_{th} . As a result, node u is contaminated. Conversely, if the front reaches u with a negligible concentration (i.e. $D_{su} < L_{su}$), then node u remains uncontaminated. In both cases, the algorithm stores the effective contaminated length D_{su} as the (s, u) element in the matrix \mathbf{D} . As introduced in Section 3.1, this matrix defines the zone of influence of the source node s .

We define $\hat{N}_1(s)$ the set of the first neighbours of s that have been contaminated,

$$\hat{N}_1(s) = \{u \in N_1(s) \mid D_{su} = L_{su}\}. \quad (9)$$

Referring to Fig. 3, $\hat{N}_1(15) = \{10, 11, 16\}$ since all the first neighbours of s are contaminated. The algorithm estimates the concentration in the nodes belonging to $\hat{N}_1(s)$ using (3), as

$$c_u = c_s e^{-\frac{U_{d,su}}{H_{su}} \frac{L_{su}}{U_{su}}}, \quad \forall u \in \hat{N}_1(s). \quad (10)$$

These nodes behave as new source nodes. Thus, the algorithm repeats the above presented steps, replacing in Equations (7)-(10) node s with the nodes belonging to $\hat{N}_1(s)$. For example, once node 16 (Fig. 3) has been contaminated from the initial source node 15, the algorithm finds the set of its first neighbours, i.e. $N_1(16) = \{12, 17\}$. Equations (7)-(8) estimate the effective contaminated length along links (16, 12) and (16, 17), while (9) identifies the set of the first neighbours of node 16 that have been infected, i.e. $\hat{N}_1(16) = \{12, 17\}$. Finally, the concentration reached in nodes 12 and 17 is determined by (10). This procedure is repeated recursively until the concentration in each node of the network falls below the threshold c_{th} .

Notice that for nodes 15 and 16 the sets N_1 and \hat{N}_1 are identical. However, this is not true in general. Consider node 6 in Fig. 3b. The set of its first neighbours is $N_1(6) = \{2, 7\}$, while $\hat{N}_1(6) = \{2\}$ because node 7 cannot be reached by the propagation along link (6, 7).

The algorithm explores the nodes of the network starting from a root node and progressively visiting the adjacent nodes. In computer science, this process is called tree traversal (Valiente, 2013) since the result of the exploration is a tree structure that is a subgraph of the initial graph. In our study, this tree corresponds to the zone of influence of the source node. There are multiple ways to perform a tree traversal, according to the order in which the nodes are visited. The algorithm we use explores the nodes of the network using a depth-first search analysis. The algorithm starts at the source node and goes as far as it can down a given branch before backtracking. Referring to Fig. 3, the algorithm starts at node 15, selects the first node 10 in the set $\hat{N}_1(15)$ and deepens the analysis in the first element of the set $\hat{N}_1(10)$, i.e. node 5. Following this method, the algorithm visits the nodes in the order (15, 10, 5, 6, 2). The in-depth analysis along this path ends when the concentration falls below the threshold c_{th} . Formally, the path (15, 10, 5, 6, 2) ends because the set $\hat{N}_1(2)$ is empty. Once the first branch has been explored, the algorithm backtracks to node 6's next available neighbour, i.e. node 7.

477 From the numerical point of view, depth-first search analysis requires less
478 memory and it is more efficient in finding trees on networks compared to other
479 algorithms, such as breath-first search (Kozen, 1992).

480 Notice that, referring to the example in Fig. 3b, link (11, 7) is affected
481 by toxic propagation twice, both along propagation path $\gamma_1=(15, 11, 7)$ and
482 $\gamma_2=(15, 10, 11, 7)$. As a consequence the algorithm calculates two different
483 values of $D_{11,7}$, since the concentration reached at node 11 (c_{11}) along γ_1 is
484 generally different from the one obtained along γ_2 . As the aim of the method is
485 to determine the extent of the zone of influence, the algorithm considers all the
486 possible passages through a generic link and stores the longest distance reached
487 by the toxic substance. More precisely, for each path γ_α the algorithm compares
488 $D_{su}^{(\gamma_\alpha)}$ with the distance $D_{su}^{(\gamma_{\alpha-1})}$ obtained along the previously explored path
489 $\gamma_{\alpha-1}$ passing through the link (s, u) . Equation (8) is, thus, refined as:

$$D_{su}^{(\gamma_\alpha)} = \max[\min[D_{su}^{pot}, L_{su}], D_{su}^{(\gamma_{\alpha-1})}], \quad (11)$$

490 where γ_α is an index for the order in which the path is explored. We underline
491 that, given the assumptions in Subsection 2.2, the two contaminated flows along
492 paths γ_1 and γ_2 do not physically meet in node 11. Rather, γ_1 and γ_2 are two
493 of the possible contaminated paths originated by the pollutant emission.

494 4. Results

495 The potential of the proposed approach is discussed through a case study.
496 The model is applied to assess urban vulnerability of the city of Lyon (France)
497 to the release of a toxic gas. Lyon (Fig. 4) is located in east-central France and
498 it is the third-largest urban agglomeration in France after Paris and Marseille,
499 with a population of approximately 1.5 million inhabitants. In this work, the
500 analysis is limited to a part of the city (Fig. 4c) that presents an intricate urban
501 fabric and tall buildings on the edge of the streets. These characteristics are
502 consistent with the model representation of the streets as a network of street
503 canyons. The study area has an extent of about 6.5 km^2 , it hosts a population of

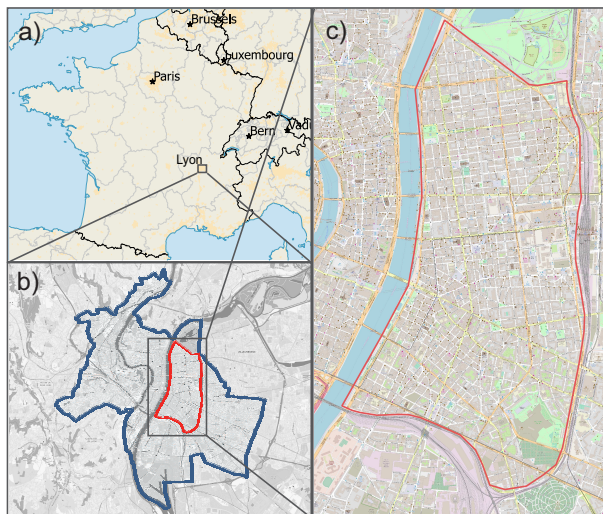


Figure 4: The case study area. a) Location of the metropolitan area of Lyon within France. b) Location of the study area within the municipality of Lyon. c) The study area.

about 140,000 inhabitants and is delimited by natural and artificial boundaries (rivers, parks and railways). These boundaries determine a discontinuity in the dispersion of pollutants along the street canyons.

The street canyons and the street intersections result in a network of 750 nodes and 1110 links. The geometrical characteristics of the street canyons, the population density, the longitudinal mean wind and the vertical transfer velocity in the streets are stored in the matrices \mathbf{H} , \mathbf{L} , \mathbf{P} , \mathbf{U} and \mathbf{U}_d , respectively.

4.1. The zone of influence of a source node

The first outcome of the model is the identification of the zone of influence of a source node, i.e. the set of links contaminated by the toxic substance with a concentration above a defined threshold, stored in matrix \mathbf{D} (see Section 3).

As an example, Fig. 5 shows the zone of influence of a source node for different wind directions ($\Phi = 45^\circ, 135^\circ, 225^\circ$ and 315°) and for two different initial concentration values. For the sake of generality, the concentration scenarios are defined by the ratio between the concentration in the source node (c_0) and the limit concentration (c_{th}).

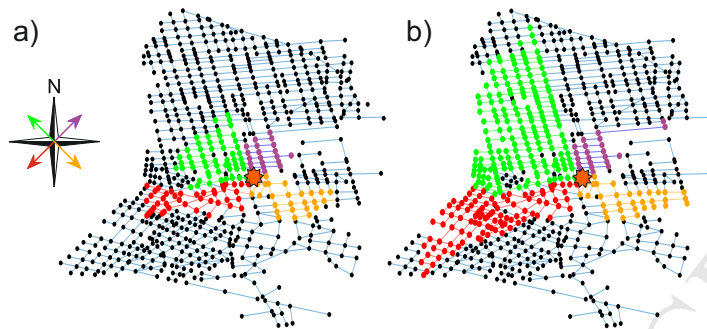


Figure 5: The zone of influence of a generic source node (orange star) in the network for different wind directions (red, green, violet and yellow refer to the wind directions $\Phi = 45^\circ$, 135° , 225° and 315° , respectively). Panel (a) and (b) refer to a concentration ratio $c_0/c_{th} = 10$ and $c_0/c_{th} = 100$, respectively.

520 The urban topology, the wind direction and the initial concentration shape
 521 the zone of influence of the source node. Variations in the mean velocity of
 522 the external wind (\bar{u}) as well as the stability conditions (as determined by the
 523 Monin-Obukhov length L_{MO}) are instead irrelevant. As stated in (2) and (A.1)-
 524 (A.2), both u_d and u_{st} depend linearly on the friction velocity u_* . Since our
 525 propagation model evaluates the pollutant spreading as a function of their ratio
 526 (3), variations of u_* , and thus of L_{MO} and \bar{u} , will not be effective in determining
 527 the zone of influence.

528 4.2. Spatial and frequency distribution of urban vulnerability

529 The spatial pattern of urban vulnerability can be analysed at a glance using
 530 vulnerability maps. Given the geometry of the urban fabric, the conditions
 531 of the external wind, the spatial distribution of the citizens and the emission
 532 scenario, the model provides a map that associates at each node of the street
 533 network its vulnerability index. The computational time is 2 (in the case of
 534 $c_0/c_{th} = 100$) or 3 (in the case of $c_0/c_{th} = 10$) orders of magnitude lower than
 535 the time taken by well-known street network models as SIRANE. As mentioned
 536 in Section 3, this is achieved by first applying the algorithm for the spread of
 537 toxic substances on networks (Section 3) and by computing the matrix of the
 538 contaminated street lengths \mathbf{D} (i.e. the zone of influence) for all nodes of the

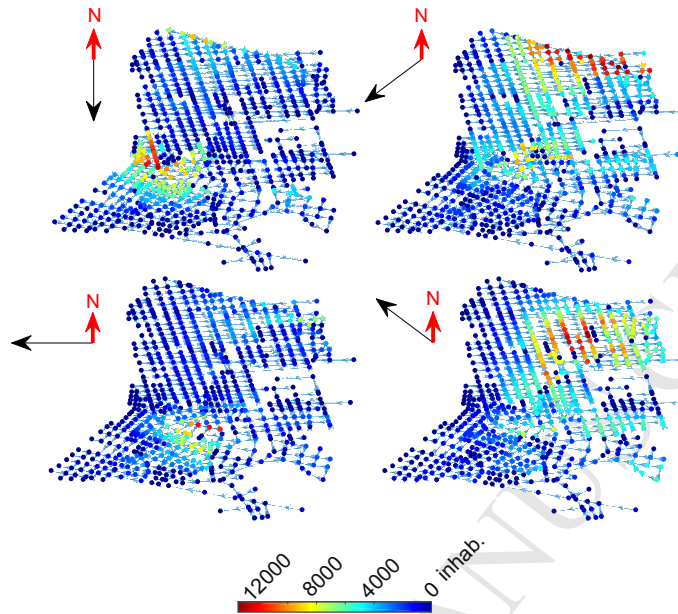


Figure 6: Vulnerability maps for different wind directions and with a concentration ratio c_0/c_{th} equal to 10.

539 network. Next, the vulnerability index defined in Equation (6) is calculated
 540 for each node, taking into account both the extent of the zone affected by the
 541 propagation originated in the node (\mathbf{D}) and the number of people leaving in that
 542 zone (\mathbf{P}). Finally, a vulnerability map is constructed by associating a colour to
 543 each node based on its vulnerability index.

544 Sixteen vulnerability maps for the case study area are obtained (see the
 545 supplementary material) by varying the direction of the external wind (Φ) and
 546 the concentration ratio c_0/c_{th} . These parameters affect the node vulnerability
 547 by shaping its zone of influence (matrix \mathbf{D}), as mentioned in Section 4.1. In
 548 this study, the number of inhabitants in the streets (\mathbf{P}) was kept constant in
 549 the different scenarios and was derived from the map of the resident citizens in
 550 the city of Lyon. Future works should consider how the spatial distribution of
 551 the population varies on different days of the week or at different times of the
 552 day. These variations could be easily implemented in the model by modifying
 553 the \mathbf{P} matrix and would increase the number of cases (i.e. maps) considered.

Fig. 6 shows four vulnerability maps for a wind direction varying between $\Phi = 0^\circ$ (north wind) and $\Phi = 135^\circ$. The maps are obtained simulating for each node a release with a concentration equal to ten times the threshold value, i.e. $c_0/c_{th} = 10$. Node vulnerability, defined in terms of number of affected people, varies between 0 (blue) and 12000 (red) inhabitants. The maps reveal at a glance the most susceptible zones and the global vulnerability of the urban area in the different wind direction scenarios. From Fig. 6, it can be seen that the vulnerability index is not distributed homogeneously. On the contrary, the vulnerability tends to be maximal (red nodes) in a defined area of the map and its value gradually decreases in the nodes around it. Moreover, the position of the most vulnerable nodes varies strongly with small variations in the wind direction. As an example, notice the difference between the two scenarios related to $\Phi = 0^\circ$ and $\Phi = 45^\circ$ in Fig. 6.

To better understand this behaviour, Fig. 7.a summaries the results of the sixteen simulated scenarios. Each scenario is represented by an arrow oriented with the wind direction, coloured according to the concentration ratio and positioned in the area of greatest vulnerability for that scenario. It is evident that for Φ equal to 0° , 90° , 180° and 270° (the cardinal directions) the most vulnerable nodes are located in the southern part of the network, while for Φ equal to 45° , 135° , 225° and 315° (the transversal directions) the most vulnerable areas are in the northern part of the network.

As the geometrical characteristics of the street canyons and the population density are rather homogeneously distributed in the street network, this different vulnerability pattern is related to the orientation of the streets with respect to the wind direction. In fact, the northern part of the street network is mainly oriented according to the cardinal directions (North-South and West-East oriented streets) and experiences the highest vulnerability when the wind blows according to one of the transversal directions. Conversely, the southern part of the street network is oriented mainly according to the transversal directions, and a greater vulnerability occurs when the wind is blowing in the cardinal directions. Thus, if the wind blows obliquely with respect to street orientations

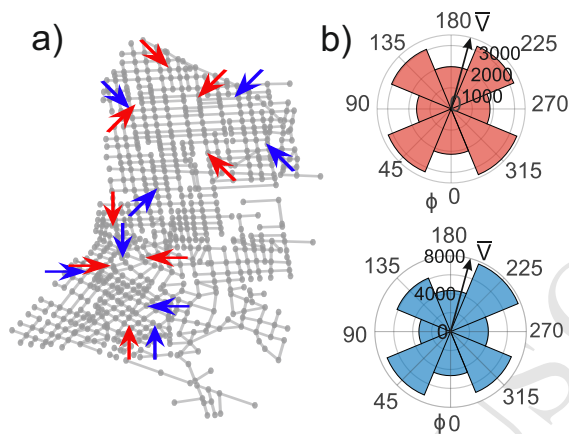


Figure 7: a) Most vulnerable areas in the street network for different wind directions and concentration ratios. Each scenario is represented by an arrow oriented according to the wind direction, coloured according to the concentration ratio (red arrows for $c_0/c_{th} = 10$ and blue arrows for $c_0/c_{th} = 100$) and positioned in the area of greatest vulnerability on the map. b) Polar histogram (red for $c_0/c_{th} = 10$ and blue for $c_0/c_{th} = 100$) of the average node vulnerability for the different wind directions

then vulnerability increases.

For each of the sixteen scenarios analysed, the average vulnerability over the entire network (\bar{V}) is calculated as

$$\bar{V} = \frac{1}{N} \sum_i^N V_i, \quad (12)$$

where V_i is the vulnerability index for the i -th node and N is the number of nodes in the network. The two polar histograms of Fig. 7.b report these average vulnerability values for the two concentration ratios considered. Each sector in the polar histograms refers to a different wind direction. As expected, higher concentration ratios correspond to higher vulnerability values. Moreover, since most of the streets ($\sim 60\%$) are oriented in the cardinal directions, the average vulnerability is greater when the wind blows in the transversal directions.

Fig. 8 gives an overview of the long-term vulnerability of the urban fabric to toxic releases. The maps depict nodes vulnerability weighted by the annual

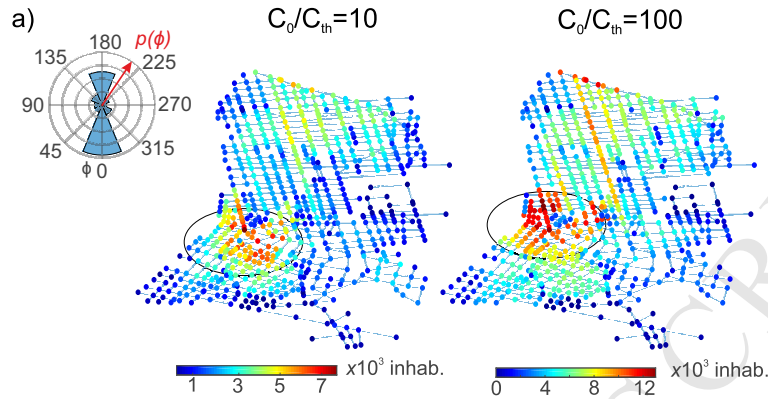


Figure 8: Maps of vulnerability weighted by the annual frequency of the wind directions. The polar histogram (inset *a*) shows the occurrence of wind directions in the city of Lyon in terms of annual relative frequency $p(\Phi)$.

frequency of the wind directions over the city of Lyon. As detailed in the inset of Fig. 8, the dominant wind direction in Lyon is North-South. As a consequence, the highest vulnerabilities are located in the circled area, corresponding to the most critical area when North-South oriented winds blow (see $\Phi = 0^\circ$ and $\Phi = 180^\circ$ scenarios in the supplementary material).

Results in Fig. 6 suggest that, for each scenario, a restricted area of the urban fabric is characterized by high levels of vulnerability, while most of the nodes have a low spreading potential. Thus, both spatial and frequency distribution of node vulnerabilities are not trivial. A frequency analysis of vulnerability values was performed to identify the statistical distribution of the data. For each scenario, node vulnerability values were classified in ten equal size intervals. Then, the relative frequency (p) of each class was calculated. Fig. 9 presents the relative frequency of node vulnerability for the different scenarios in a log-log plot. For the sake of graphic clarity, vulnerability values were normalised to the maximum one (V_{max}). Generally, the data show a linear behaviour in the log-log plot, thus exhibiting a power law trend. The power law confirms that vulnerability distribution is heterogeneous, with few nodes being much more critical than the others. This configuration suggests that, for each wind scenario, the entire neighbourhood could be protected with security interventions targeted

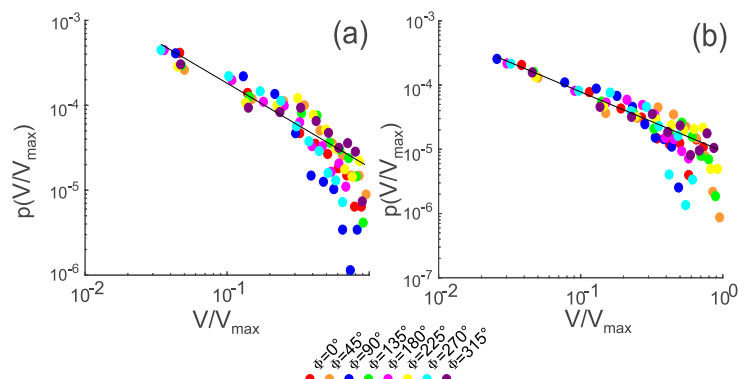


Figure 9: Relative frequency of vulnerability for different wind directions and for a concentration ratio $c_0/c_{th} = 10$ (a) and $c_0/c_{th} = 100$ (b). The display is in logarithmic scale.

on small urban areas. From the opposite point of view, it demonstrates that a malicious release of gaseous substances can have a much more dramatic effect if it occurs in points characterized by maximum vulnerability.

Notice that many real-world networks (e.g., the Internet, World Wide Web, scientific citations) present a power law distribution of nodes degree (Boccaletti et al., 2006). The degree defines the importance of a node in the network in terms of its connectivity. In this case, a power law results from the non-trivial interaction of multiple factors that define the vulnerability index, i.e. the topological connectivity of the network, the geometry characteristics of the street canyons, the toxic spreading process and the population distribution in the city.

5. Conclusions

We have presented a complex network approach for the study of diffusion processes in the urban atmosphere. Within the urban canopy, the wind flows along the street canyons and the transport of pollutants is strongly influenced by the structure of the city, i.e. by the orientation of the streets and by their interconnections. Based on these considerations, we have modelled the interaction between the city and the external wind as a weighted complex network whose links and nodes represent the streets and the street intersections, respec-

tively. The direction of the links and their weights describe the direction and the intensity of the wind along the streets and the geometrical properties of the buildings that surround the street canyons. Using a depth-first search analysis, we have implemented a spreading model on networks that simulates the propagation process from a point source. As an example, the developed method has been adopted to create vulnerability maps of the city of Lyon (France). These maps highlight the most vulnerable areas of the city, i.e. the areas from which the spread of a toxic substance, released at ground level, can harm more people. We found that the spatial and frequency distribution of urban vulnerability is heterogeneous and is strongly influenced by the alignment between the direction of the external wind and the orientation of the streets.

The model proved to be fast-to-run and functional, and therefore useful for the analysis of multiple scenarios that take into account various meteorological conditions, or different distributions of the residing population, and also temporary or permanent changes in the urban structure (e.g., the construction of a new building or the raising of a temporary wall to close a street during a public event). In particular, the computational time was estimated to be up to 3 orders of magnitude lower than that of the well-known street network model SIRANE. Thanks to these characteristics, this method is appropriate for the prediction and management of emergency scenarios, due to accidental or harmful releases of toxic substances in the urban atmosphere.

This work is in line with the efforts made in recent years (Hamlyn et al., 2007; Soulhac et al., 2011; Belcher et al., 2015; Goulart et al., 2018) to develop operational modelling tools for the prediction of pollutant transport in large urban areas. Moreover, the study demonstrate that the theory of complex networks can be adopted to this aim. The rate at which new techniques and applications are developed in the field of complex networks (in particular, in the field of epidemic spreading on networks) makes this new perspective particularly promising.

Future work is aimed at comparing different cities to understand how urban topology influences the dispersion and therefore the vulnerability of the city. In

this way, it will be possible to understand which cities are the most structurally fragile. Further analyses should be conducted to consider variations in urban vulnerability due to changes in the presence of people in the different times of the day or during the different periods of the week. Finally, the results of this proof of concept study encourage the use of metrics and tools from complex network theory (e.g., centrality metrics) to investigate the role of the different key variables involved in urban dispersion, in order to better understand the fundamental mechanisms that drive this phenomenon.

Appendix A. Longitudinal wind velocity along a street canyon

According to Soulhac et al. (2008), the average velocity u_{st} along the longitudinal axis of a street canyon reads

$$u_{st} = u_H \cos \Phi \frac{\delta_i^2}{hw} \left[\frac{2\sqrt{2}}{C} (1 - \beta) \left(1 - \frac{C^2}{3} + \frac{C^4}{45} \right) + \beta \frac{2\alpha - 3}{\alpha} + \left(\frac{w}{\delta_i} - 2 \right) \frac{\alpha - 1}{\alpha} \right] \quad (\text{A.1})$$

$$\text{with} = \begin{cases} \alpha = \ln \left(\frac{\delta_i}{z_{0,build}} \right) \\ \beta = \exp \left[\frac{C}{\sqrt{2}} \left(1 - \frac{h}{\delta_i} \right) \right] \\ u_H = u_* \sqrt{\frac{\pi}{\sqrt{2}k^2C} \left[Y_0(C) - \frac{J_0(C)Y_1(C)}{J_1(C)} \right]} \\ C \text{ solution of } \frac{z_{0,build}}{\delta_i} = \frac{2}{C} \exp \left[\frac{\pi}{2} \frac{Y_1(C)}{J_1(C)} - \gamma \right] \\ \delta_i = \min \left(h, \frac{w}{2} \right) \end{cases} \quad (\text{A.2})$$

where Φ is the external wind direction with respect to the street longitudinal axis, h and w are the height and the width of the street canyon, $z_{0,build}$ is the aerodynamic roughness of the canyon walls, u_* is the friction velocity of the external atmospheric boundary layer flow, J_0 , J_1 , Y_0 and Y_1 are Bessel functions, k is the von Kármán constant, and γ is the Euler constant. The friction velocity u_* is determined using the Monin-Obukhov similarity theory to model the flow

in the external boundary layer.

Appendix B. Solution for the one-dimensional transport equation

Under the assumption that c_{ext} is negligible with respect to the concentration in the street canyon, the one-dimensional transport equation (1) becomes

$$\frac{\partial c}{\partial t} + u_{st} \frac{\partial c}{\partial x} + \frac{u_d}{h} c = 0. \quad (\text{B.1})$$

By introducing the substitution

$$g(x, t) = c(x, t) \exp\left(\frac{u_d}{h} t\right), \quad (\text{B.2})$$

(B.1) yields

$$\frac{\partial g}{\partial t} + u_{st} \frac{\partial g}{\partial x} = 0. \quad (\text{B.3})$$

The general solution for (B.3) is found by introducing the new coordinates $\tau = t$, $\xi = x - u_{st}t$ and using the chain rule:

$$\frac{\partial g(x, t)}{\partial t} = \frac{\partial g(\xi, \tau)}{\partial \tau} - u_{st} \frac{\partial g(\xi, \tau)}{\partial \xi} \quad (\text{B.4})$$

$$\frac{\partial g(x, t)}{\partial x} = \frac{\partial g(\xi, \tau)}{\partial \xi}. \quad (\text{B.5})$$

Equation (B.3) becomes

$$\frac{\partial g(\xi, \tau)}{\partial \tau} = 0, \quad (\text{B.6})$$

and, therefore,

$$g(\xi, \tau) = F(\xi) \quad \rightarrow \quad g(x, t) = F(x - u_{st}t), \quad (\text{B.7})$$

where F is a derivable function. The solution of (B.1) is obtained returning to the original function,

$$c(x, t) = g(x, t) \exp\left(-\frac{u_d}{h}t\right) = F(x - u_{st}t) \exp\left(-\frac{u_d}{h}t\right). \quad (\text{B.8})$$

Function F is found using the initial or boundary conditions of the problem.

For a continuous release c_0 in the source node starting from $t \geq 0$, the boundary condition is defined as

$$c(0, t) = c_0 \Theta(t), \quad (\text{B.9})$$

where Θ is the Heaviside function. For $x = 0$, (B.8) and (B.9) yield

$$c(0, t) = F(-u_{st}t) \exp\left(-\frac{u_d}{h}t\right) = c_0 \Theta(t). \quad (\text{B.10})$$

Function F is obtained from the previous one and the solution for the continuous release is thus

$$c(x, t) = F(x - u_{st}t) \exp\left(-\frac{u_d}{h}t\right) = c_0 \exp\left(-\frac{u_d}{u_{st}} \frac{x}{h}\right) \Theta\left(t - \frac{x}{u_{st}}\right). \quad (\text{B.11})$$

For a quick release in the source node, the initial condition is set as a rectangular pulse with width a and height c_0

$$c(x, 0) = c_0 [\Theta(x) - \Theta(x - a)]. \quad (\text{B.12})$$

When a tends to zero, the release is almost instantaneous. Following the same reasoning as in (B.10) and (B.11), but considering this time $t = 0$, we obtain the solution for a quick release:

$$c(x, t) = c_0 \exp\left(-\frac{u_d}{h}t\right) [\Theta(x - u_{st}t) - \Theta(x - u_{st}t - a)]. \quad (\text{B.13})$$

706 Appendix C. Adjacency matrix

707 Consider the network in Fig.1c, extracted as a subgraph from the network
708 of streets in Fig.1a. The adjacency matrix of this simple four-links graph reads

$$\mathbf{A} = \begin{matrix} & \begin{matrix} s & g & i & j & k \end{matrix} \\ \begin{matrix} s \\ g \\ i \\ j \\ k \end{matrix} & \begin{pmatrix} 0 & 0 & 1 & 0 & 0 \\ 0 & 0 & 1 & 0 & 0 \\ 0 & 0 & 0 & 1 & 1 \\ 0 & 0 & 0 & 0 & 0 \\ 0 & 0 & 0 & 0 & 0 \end{pmatrix} \end{matrix}. \quad (\text{C.1})$$

709 Note that the matrix is asymmetric since the network is directed (i.e. the links
710 have a specific direction).

711 References

- 712 Ahern, J., 2011. From fail-safe to safe-to-fail: Sustainability and resilience in
713 the new urban world. *Landscape and Urban Planning* 100 (4), 341–343.
- 714 Arnfield, A. J., 2003. Two decades of urban climate research: A review of turbu-
715 lence, exchanges of energy and water, and the urban heat island. *International*
716 *Journal of Climatology* 23 (1), 1–26.
- 717 Barthélemy, M., 2011. Spatial networks. *Physics Reports* 499 (1-3), 1–101.
- 718 Belcher, S., Coceal, O., Goulart, E., Rudd, A., Robins, A., 2015. Processes
719 controlling atmospheric dispersion through city centres. *Journal of Fluid Me-*
720 *chanics* 763, 51–81.
- 721 Berke, P. R., Song, Y., Stevens, M., 2009. Integrating hazard mitigation into
722 new urban and conventional developments. *Journal of Planning Education*
723 *and Research* 28 (4), 441–455.

- Blocken, B., 2015. Computational Fluid Dynamics for urban physics: Importance, scales, possibilities, limitations and ten tips and tricks towards accurate and reliable simulations. *Building and Environment* 91, 219–245.
- Boccaletti, S., Latora, V., Moreno, Y., Chavez, M., Hwang, D.-U., 2006. Complex networks: Structure and dynamics. *Physics Reports* 424 (4-5), 175–308.
- Borgatti, S. P., Mehra, A., Brass, D. J., Labianca, G., 2009. Network analysis in the social sciences. *Science* 323 (5916), 892–895.
- Brunekreef, B., Holgate, S. T., 2002. Air pollution and health. *The Lancet* 360 (9341), 1233–1242.
- Carruthers, D., Edmunds, H., Lester, A., McHugh, C., Singles, R., 2000. Use and validation of ADMS-Urban in contrasting urban and industrial locations. *International Journal of Environment and Pollution* 14 (1-6), 364–374.
- Carvalho, R., Buzna, L., Bono, F., Gutiérrez, E., Just, W., Arrowsmith, D., 2009. Robustness of trans-European gas networks. *Physical Review E* 80 (1), 016106.
- Comin, C. H., da Fontoura Costa, L., 2011. Identifying the starting point of a spreading process in complex networks. *Physical Review E* 84 (5), 056105.
- Di Sabatino, S., Buccolieri, R., Salizzoni, P., 2013. Recent advancements in numerical modelling of flow and dispersion in urban areas: A short review. *International Journal of Environment and Pollution* 7 52 (3-4), 172–191.
- Gelbrecht, M., Boers, N., Kurths, J., 2017. A complex network representation of wind flows. *Chaos: An Interdisciplinary Journal of Nonlinear Science* 27 (3), 035808.
- Giustolisi, O., Ridolfi, L., 2014. A novel infrastructure modularity index for the segmentation of water distribution networks. *Water Resources Research* 50 (10), 7648–7661.

- 750 Goulart, E. V., Coceal, O., Belcher, S. E., 2018. Dispersion of a passive scalar
751 within and above an urban street network. *Boundary-Layer Meteorology*
752 166 (3), 351–366.
- 753 Hamlyn, D., Hilderman, T., Britter, R., 2007. A simple network approach to
754 modelling dispersion among large groups of obstacles. *Atmospheric Environ-*
755 *ment* 41 (28), 5848–5862.
- 756 Heinrich, J., Wichmann, H.-E., 2004. Traffic related pollutants in Europe and
757 their effect on allergic disease. *Current Opinion in Allergy and Clinical Im-*
758 *munology* 4 (5), 341–348.
- 759 Hunter, L. J., Watson, I., Johnson, G., 1990. Modelling air flow regimes in urban
760 canyons. *Energy and Buildings* 15 (3-4), 315–324.
- 761 Kim, Y., Wu, Y., Seigneur, C., Roustan, Y., 2018. Multi-scale modeling of
762 urban air pollution: development and application of a street-in-grid model
763 (v1. 0) by coupling munich (v1. 0) and polair3d (v1. 8.1). *Geoscientific Model*
764 *Development* 11 (2), 611–629.
- 765 Kozen, D. C., 1992. Depth-first and breadth-first search. In: *The Design and*
766 *Analysis of Algorithms*. Springer, pp. 19–24.
- 767 Mayer, H., 1999. Air pollution in cities. *Atmospheric Environment* 33 (24-25),
768 4029–4037.
- 769 McLeish, C., 2017. Recasting the threat of chemical terrorism in the EU: The is-
770 sue of returnees from the syrian conflict. *European Journal of Risk Regulation*
771 8 (4), 643–657.
- 772 Namdeo, A., Colls, J., 1996. Development and evaluation of SBLINE, a suite of
773 models for the prediction of pollution concentrations from vehicles in urban
774 areas. *Science of the Total Environment* 189, 311–320.
- 775 Newman, M., 2010. *Networks: An introduction*. Oxford university press.

- 776 Newman, M. E., 2002. Spread of epidemic disease on networks. *Physical Review*
777 E 66 (1), 016128.
- 778 Oke, T. R., 1982. The energetic basis of the urban heat island. *Quarterly Journal*
779 of the Royal Meteorological Society 108 (455), 1–24.
- 780 Porta, S., Crucitti, P., Latora, V., 2006. The network analysis of urban streets:
781 A dual approach. *Physica A: Statistical Mechanics and its Applications*
782 369 (2), 853–866.
- 783 Robins, A., Savory, E., Scaperdas, A., Grigoriadis, D., 2002. Spatial variability
784 and source-receptor relations at a street intersection. *Water, Air and Soil*
785 *Pollution: Focus* 2 (5-6), 381–393.
- 786 Roth, M., 2000. Review of atmospheric turbulence over cities. *Quarterly Journal*
787 of the Royal Meteorological Society 126 (564), 941–990.
- 788 Salizzoni, P., Soulhac, L., Mejean, P., 2009. Street canyon ventilation and at-
789 mospheric turbulence. *Atmospheric Environment* 43 (32), 5056–5067.
- 790 Scaperdas, A.-S., 2000. Modelling air flow and pollutant dispersion at urban
791 canyon intersections.
- 792 Ser-Giacomi, E., Rossi, V., López, C., Hernandez-Garcia, E., 2015. Flow net-
793 works: A characterization of geophysical fluid transport. *Chaos: An Interdis-*
794 *ciplinary Journal of Nonlinear Science* 25 (3), 036404.
- 795 Soulhac, L., 2000. Modélisation de la dispersion atmosphérique à l'intérieur de
796 la canopée urbaine. Ph.D. thesis, Ecole Centrale de Lyon.
- 797 Soulhac, L., Garbero, V., Salizzoni, P., Mejean, P., Perkins, R., 2009. Flow and
798 dispersion in street intersections. *Atmospheric Environment* 43 (18), 2981–
799 2996.
- 800 Soulhac, L., Perkins, R. J., Salizzoni, P., 2008. Flow in a street canyon for any
801 external wind direction. *Boundary-Layer Meteorology* 126 (3), 365–388.

- 802 Soulhac, L., Salizzoni, P., Cierco, F.-X., Perkins, R., 2011. The model SIRANE
803 for atmospheric urban pollutant dispersion; part I, presentation of the model.
804 Atmospheric Environment 45 (39), 7379–7395.
- 805 Soulhac, L., Salizzoni, P., Mejean, P., Perkins, R., 2013. Parametric laws to
806 model urban pollutant dispersion with a street network approach. Atmo-
807 spheric Environment 67, 229–241.
- 808 Tominaga, Y., Stathopoulos, T., 2012. CFD modeling of pollution dispersion in
809 building array: Evaluation of turbulent scalar flux modeling in RANS model
810 using LES results. Journal of Wind Engineering and Industrial Aerodynamics
811 104, 484–491.
- 812 Tucker, J. B., 2000. Toxic terror: Assessing terrorist use of chemical and bio-
813 logical weapons. MIT Press.
- 814 Tzella, A., Vanneste, J., 2016. Dispersion in rectangular networks: effective
815 diffusivity and large-deviation rate function. Physical review letters 117 (11),
816 114501.
- 817 Valiente, G., 2013. Algorithms on trees and graphs. Springer Science & Business
818 Media.
- 819 Yazdani, A., Jeffrey, P., 2011. Complex network analysis of water distribution
820 systems. Chaos: An Interdisciplinary Journal of Nonlinear Science 21 (1),
821 016111.

- A complex network approach to model dispersion in the urban atmosphere is presented
- Dispersion from a source is modelled as a spreading process on a complex network
- The polluted area and the number of people affected by the release are assessed
- Maps of urban vulnerability to the release of toxic gases are rapidly constructed
- The street topology of the city is a key driver in the dispersion process