



Seasonal evolution of C₂N₂, C₃H₄, and C₄H₂ abundances in Titan's lower stratosphere

M. Sylvestre, N. Teanby, S. Vinatier, Sébastien Lebonnois, P. Irwin

► To cite this version:

M. Sylvestre, N. Teanby, S. Vinatier, Sébastien Lebonnois, P. Irwin. Seasonal evolution of C₂N₂, C₃H₄, and C₄H₂ abundances in Titan's lower stratosphere. *Astronomy and Astrophysics - A&A*, 2018, 609, pp.A64. 10.1051/0004-6361/201630255 . hal-01923403

HAL Id: hal-01923403

<https://hal.science/hal-01923403v1>

Submitted on 16 Jan 2021

HAL is a multi-disciplinary open access archive for the deposit and dissemination of scientific research documents, whether they are published or not. The documents may come from teaching and research institutions in France or abroad, or from public or private research centers.

L'archive ouverte pluridisciplinaire **HAL**, est destinée au dépôt et à la diffusion de documents scientifiques de niveau recherche, publiés ou non, émanant des établissements d'enseignement et de recherche français ou étrangers, des laboratoires publics ou privés.

Seasonal evolution of C₂N₂, C₃H₄, and C₄H₂ abundances in Titan's lower stratosphere

M. Sylvestre¹, N. A. Teanby¹, S. Vinatier², S. Lebonnois³, and P. G. J. Irwin⁴

¹ School of Earth Sciences, University of Bristol, Wills Memorial Building, Queen's Road, Bristol BS8 1 RJ, UK
e-mail: melody.sylvestre@bristol.ac.uk

² LESIA, Observatoire de Paris, PSL Research University, CNRS, Sorbonne Universités, UPMC Univ. Paris 06, Univ. Paris Diderot, Sorbonne Paris Cité, 5 Place Jules Janssen, 92190 Meudon, France

³ LMD, CNRS, IPSL, UMR 8539, 4 Place Jussieu, 75005 Paris, France

⁴ Atmospheric, Oceanic, & Planetary Physics, Department of Physics, University of Oxford, Clarendon Laboratory, Parks Road, Oxford OX1 3PU, UK

Received 14 December 2016 / Accepted 29 August 2017

ABSTRACT

Aims. We study the seasonal evolution of Titan's lower stratosphere (around 15 mbar) in order to better understand the atmospheric dynamics and chemistry in this part of the atmosphere.

Methods. We analysed *Cassini*/CIRS far-IR observations from 2006 to 2016 in order to measure the seasonal variations of three photochemical by-products: C₄H₂, C₃H₄, and C₂N₂.

Results. We show that the abundances of these three gases have evolved significantly at northern and southern high latitudes since 2006. We measure a sudden and steep increase of the volume mixing ratios of C₄H₂, C₃H₄, and C₂N₂ at the south pole from 2012 to 2013, whereas the abundances of these gases remained approximately constant at the north pole over the same period. At northern mid-latitudes, C₂N₂ and C₄H₂ abundances decrease after 2012 while C₃H₄ abundances stay constant. The comparison of these volume mixing ratio variations with the predictions of photochemical and dynamical models provides constraints on the seasonal evolution of atmospheric circulation and chemical processes at play.

Key words. planets and satellites: atmospheres – methods: data analysis

1. Introduction

Titan's atmosphere undergoes a rich photochemistry, initiated by the dissociation of its most abundant constituents, N₂ and CH₄. In the thermosphere and the ionosphere (at altitudes above 600 km or the 0.0001 mbar pressure level), these molecules are dissociated by solar UV and EUV photons, energetic photoelectrons, and high energy electrons from Saturn's magnetosphere (Wilson & Atreya 2004; Vuitton et al. 2012). Radicals and ions produced by these photodissociations react together and form hydrocarbons, nitriles, and eventually organic hazes. These species are then destroyed by photolysis or further chemical reactions in the upper and middle atmosphere, or they condense in the lower part of the stratosphere (at altitudes inferior to 100 km or at pressures superior to 10 mbar). As Titan's obliquity is 26.7°, its atmosphere undergoes significant seasonal variations of insolation which are expected to affect the abundances of the photochemical by-products. In addition, this seasonal forcing affects atmospheric dynamics, which transports minor atmospheric constituents (Teanby et al. 2008a, 2012; Vinatier et al. 2015). Hence, measuring the meridional and vertical distributions of the various photochemical species is a way to better understand the photochemical and dynamical processes in Titan's atmosphere.

Abundances of hydrocarbons and nitriles and their temporal evolution have been measured in various studies, especially since the beginning of the *Cassini* mission in 2004. This spacecraft has provided thirteen years of observations of Titan at different wavelength ranges, enabling us to monitor

the seasonal evolution of its atmosphere throughout its northern winter and spring. During Titan's northern winter, limb and nadir observations performed with the infrared spectrometers Voyager 1/IRIS in November 1980 (Infrared Instrument, Hanel et al. 1981) and *Cassini*/Composite InfraRed Spectrometer (CIRS; Flasar et al. 2004) between 2004 and 2008 showed that many species such as acetylene (C₂H₂), diacetylene (C₄H₂), or cyanoacetylene (HC₃N) exhibited an enrichment at high northern latitudes (Kunde et al. 1981; Coustenis et al. 1991, 2007, 2010; Teanby et al. 2008b; Vinatier et al. 2010; Bampasidis et al. 2012). This was attributed to the atmospheric circulation which took the form of a single pole-to-pole Hadley cell, and more specifically to the subsiding branch of this cell, located above the winter pole and bringing photochemical species from their production level to the stratosphere (Teanby et al. 2009b; Vinatier et al. 2010). After the equinox (August 2009), CIRS measurements analysed by Teanby et al. (2012), Coustenis et al. (2013), Vinatier et al. (2015), Coustenis et al. (2016) revealed that the vertical and meridional distributions of these gases have changed significantly, especially above the south pole where the abundances of photochemical by-products strongly increased after 2011. This was interpreted as a subsidence above high southern latitudes, due to the reversal of the pole-to-pole Hadley cell. At northern latitudes, Coustenis et al. (2013) found a decrease in trace gas abundances between 2010 and 2012.

While mid-infrared CIRS observations provide information between 10 mbar and 0.001 mbar for limb observations, and from 10 mbar to 0.5 mbar for nadir observations, far-infrared

CIRS spectra mainly probe the lower part of the stratosphere, at pressure levels between 10 mbar and 20 mbar. For instance, this type of observation allowed [Teanby et al. \(2009a\)](#) to measure the meridional distribution of diacetylene (C_4H_2) and methylacetylene (C_3H_4) in the lower stratosphere during winter. Furthermore, unlike the CIRS mid-infrared observations, far-infrared spectra can be used to measure the distribution of cyanogen (C_2N_2), thus providing additional information about the chemistry of Titan's stratosphere. For instance, [Teanby et al. \(2009a\)](#) compared the enrichment in C_2N_2 and other nitriles and hydrocarbons at the north pole during winter, and suggested that nitriles undergo an additional loss process compared to the hydrocarbons with similar lifetimes, as proposed by [Yung \(1987\)](#).

In this paper, we use nadir far-infrared spectra from *Cassini*/CIRS to measure the meridional distributions of diacetylene (C_4H_2), methylacetylene (C_3H_4), and cyanogen (C_2N_2) from 2006 to 2015. The data we present cover the whole latitude range and were acquired throughout the *Cassini* mission. It allows us to monitor precisely the seasonal evolution of the distributions of C_2N_2 , C_3H_4 , and C_4H_2 in the lower stratosphere, and thus to complete the previous studies by giving insights on the atmospheric dynamics and photochemistry of Titan's lower stratosphere.

2. Observations

Cassini/CIRS ([Flasar et al. 2004](#)) is a Fourier transform spectrometer composed of three focal planes which operate in different wavenumber ranges. The focal plane FP1 probes the spectral range 10–600 cm^{-1} (17–1000 μm) and is made of a single circular detector with an angular resolution of 3.9 mrad. The focal planes FP3 and FP4 respectively measure spectra in 600–1100 cm^{-1} (9–17 μm) and 1100–1400 cm^{-1} (7–9 μm). Both are composed of a linear array of ten detectors with an angular resolution of 0.273 mrad per detector.

In this study, we analyse nadir spectra acquired from FP1, with an apodised spectral resolution of 0.5 cm^{-1} , in order to resolve the spectral signatures of C_2N_2 , C_3H_4 , and C_4H_2 . We also exploit FP4 spectra acquired at the same resolution in order to measure temperature with the ν_4 CH_4 band (1304 cm^{-1}). These observations were made in “sit-and-stare” geometry, where each detector of FP1 and FP4 probes the same latitude and longitude throughout the acquisition, with a total integration time comprised between 1h30 and 4h30. During these observations, the average spatial field of view is 20° of latitude for the single detector of FP1, 2° for each FP4 detector, and 15–20° for the whole FP4 array, depending on its orientation.

The datasets used in this study are summarised in Table A.1. We selected data covering the whole latitude range, acquired from 2006 to 2016 (see Fig. 1), in order to get an overview of the seasonal evolution from northern winter to mid-spring. For each dataset, 100 to 330 spectra were acquired with FP1, and 500 to 1650 with FP4. We use the photometric calibration provided by the CIRS team (version DS4000) which corrects the effects of sky background and thermal noise of the detectors more effectively than the standard calibration. Some of the datasets acquired during northern winter (before 2008, see Table A.1) have already been presented in [Teanby et al. \(2009a\)](#), but as we use a different calibration version, we reanalyse them, to ensure a consistent comparison between these data and the other data presented in this study.

For each FP1 and FP4 dataset, all the spectra acquired are averaged together in order to improve the signal-to-noise ratio by \sqrt{N} (with N the number of averaged spectra). The average

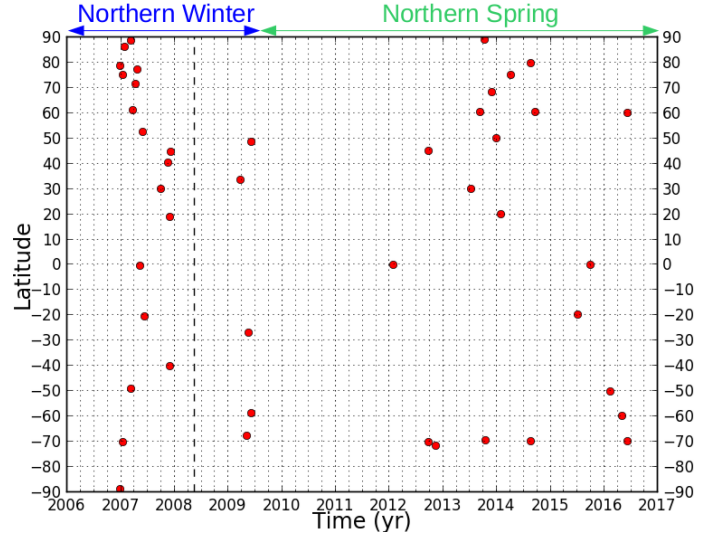


Fig. 1. Spatial and temporal distribution of the FP1 data analysed in this paper. They cover all the latitudes, with a spatial field of view of 20°. Observations are available for different times throughout northern winter and spring. Their temporal distribution is controlled by the orbits of the *Cassini* spacecraft.

signal-to-noise ratio reaches 115 at 220 cm^{-1} (spectra acquired with FP1) and 160 at 1300 cm^{-1} (FP4 spectra). Figure 2 shows an example of spectrum obtained after averaging 271 FP1 spectra measured at 40°N in November 2007.

3. Analysis

In order to retrieve the abundances of C_4H_2 , C_2N_2 , and C_3H_4 , we use the constrained non-linear inversion code NEMESIS ([Irwin et al. 2008](#)). Retrievals are performed following an iterative process based on the generation of synthetic spectra from a reference atmosphere, and the minimisation of a cost function in order to find the value of the retrieved parameter which provides the best fit of the measured spectrum.

3.1. Reference atmosphere

Our reference atmosphere extends from 0 km (~1438 mbar) to 780 km ($\sim 1 \times 10^{-5}$ mbar). The gases included in this study, their abundances, and the studies in which they were measured are detailed in Table 1. These measurements were performed using data from *Cassini*/CIRS ([Nixon et al. 2012](#); [Cottini et al. 2012](#); [Teanby et al. 2009a](#); [Coustenis et al. 2016](#)), Huygens/GCMS ([Niemann et al. 2010](#)), *Cassini*/VIMS ([Maltagliati et al. 2015](#)), and ALMA ([Molter et al. 2016](#)). We set constant vertical profiles for the constituents of our reference atmosphere above their respective condensation pressure level. In our model, the abundances of Titan's atmospheric constituents do not depend on the considered latitude. However, [Lellouch et al. \(2014\)](#) showed that in the lower stratosphere (around 15 mbar) the CH_4 mole fraction varies significantly (from 1.0 to 1.5%), which can affect the temperatures and gas abundances retrieved in this study. We address this problem in Sect. 3.6.

Spectroscopic data for the constituents of the reference atmosphere come from the GEISA 2015 database ([Jacquinet-Husson et al. 2016](#)). The spectral contributions due to collisions induced absorption (CIA) between the main constituents of Titan's atmosphere (N_2 , CH_4 , and H_2) are calculated using the studies of [Borysow & Frommhold \(1986a, b, 1987\)](#),

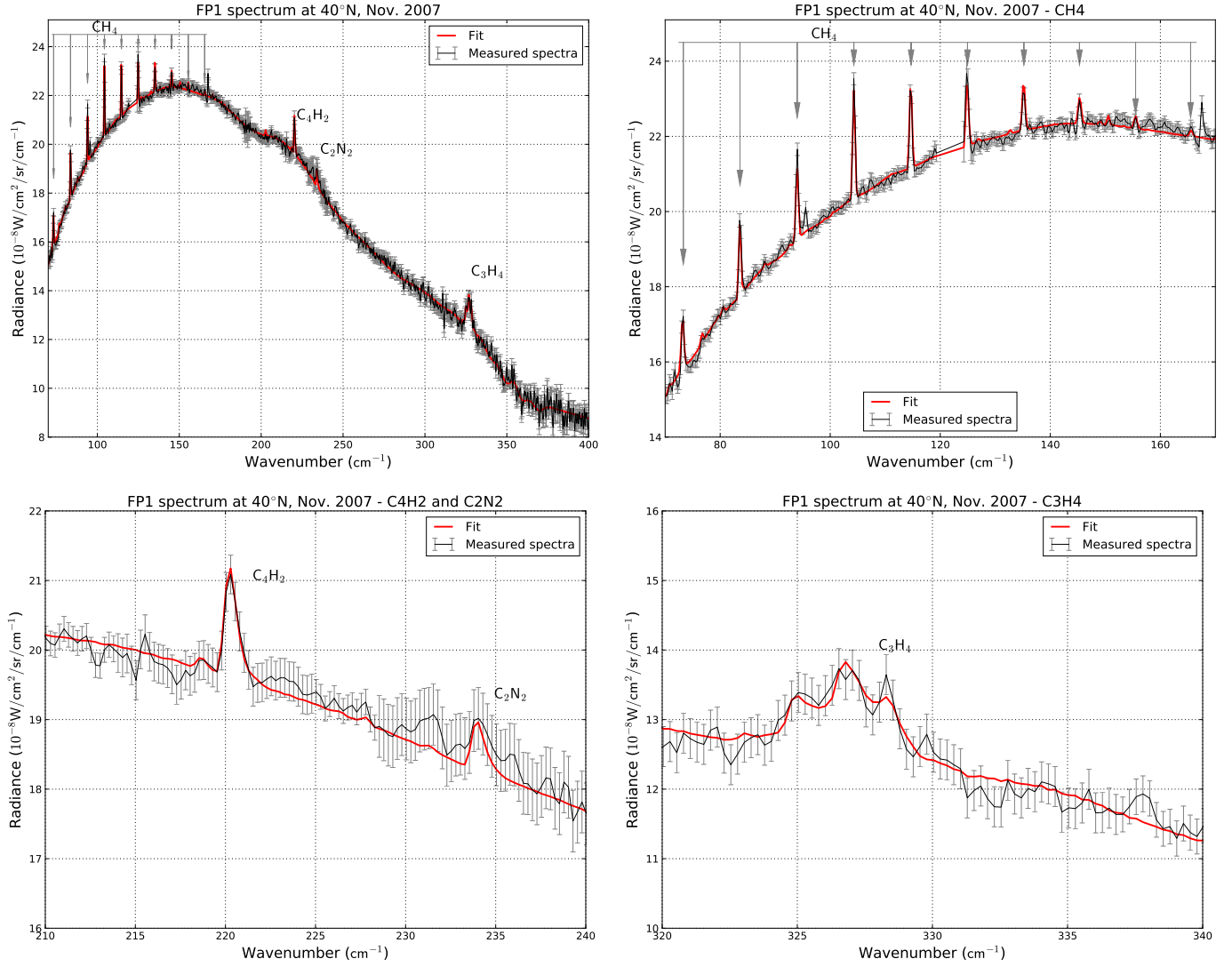


Fig. 2. Example of FP1 spectrum (after average). The *top left panel* shows the whole spectrum while the three other panels are a close-up around the relevant spectral bands. Measured spectra are in black. Red solid lines show the synthetic spectra calculated during the retrieval process. Data were acquired at a spectral resolution of 0.5 cm⁻¹. Error bars of the FP1 spectrum have been corrected because the initial error bars were too small with respect to the radiance variations caused by noise (see Sects. 2 and 3.3). C₄H₂, C₂N₂, and C₃H₄ bands are visible, and allow us to retrieve the volume mixing ratios of these species. The CH₄ bands in FP1 are used to retrieve the temperature profile between 20 mbar and 10 mbar.

Borysow & Tang (1993), and Borysow (1991). Following the studies of Tomasko et al. (2008a), de Kok et al. (2010), we multiply the absorption coefficients of the CIA by 1.5.

Our reference atmosphere takes into account the broad spectral contributions of Titan's stratospheric hazes. For the FP1 spectra (70–400 cm⁻¹), we consider four types of hazes, following de Kok et al. (2007). The main feature (haze 0) covers all wavenumbers from 70 cm⁻¹ to 550 cm⁻¹. Its extinction profile has a scale height of 65 km from 80 km to 250 km and is constant below 80 km, following de Kok et al. (2010), Tomasko et al. (2008b). Three other localised features are also included: hazes A (centred at 140 cm⁻¹), B (centred at 220 cm⁻¹), C (centred at 190 cm⁻¹) as described in de Kok et al. (2007). For the FP4 spectra (1200–1360 cm⁻¹), we use the aerosols properties measured by Vinatier et al. (2012).

3.2. Retrieval method

The retrievals are performed in several iterations. To retrieve a given variable (e.g. temperature profile, scale factor toward a given a priori vertical profile of a gas) at each iteration,

a synthetic spectrum is calculated by NEMESIS using the correlated-k method. Then, the difference between the synthetic and the measured spectra is used to compute an increment to add to the retrieved variable. At the next step, the new value or profile of this variable is then used to compute a new synthetic spectrum. This method is detailed in Irwin et al. (2008).

We retrieve simultaneously a continuous temperature profile, and best-fitting scales factors for the a priori vertical profiles of C₂N₂, C₃H₄, C₄H₂, hazes 0, A, B, and C from the FP1 spectra. Hazes fit the continuum component of the spectra. Temperature is measured using the radiance in the ten CH₄ rotational bands between 70 cm⁻¹ and 170 cm⁻¹, and the continuum. Abundances of C₄H₂, C₂N₂, and C₃H₄ are obtained by fitting the radiance in their respective spectral bands at 220 cm⁻¹, 234 cm⁻¹, and 327 cm⁻¹.

For each retrieved physical quantity, we can assess the sensitivity of our measurements as a function of the pressure using the inversion kernels defined as

$$K_{ij} = \frac{\partial I_i}{\partial x_j}, \quad (1)$$

Table 1. Constituents of the reference atmosphere, their volume mixing ratios, and the studies from which these measurements come from.

Gas	Volume mixing ratio	References
N ₂	0.9839	Normalisation
CH ₄	0.0148	Niemann et al. (2010)
¹³ CH ₄	1.71×10^{-4}	Nixon et al. (2012)
CH ₃ D	9.4×10^{-6}	Nixon et al. (2012)
H ₂ O	1.4×10^{-10}	Cottini et al. (2012)
H ₂	1.01×10^{-3}	Niemann et al. (2010)
*C ₂ N ₂	2.0×10^{-10}	Teanby et al. (2009a)
*C ₃ H ₄	1.2×10^{-8}	Teanby et al. (2009a)
*C ₄ H ₂	2.0×10^{-9}	Teanby et al. (2009a)
CO ₂	1.6×10^{-8}	Coustenis et al. (2016)
HCN	7.0×10^{-8}	Molter et al. (2016)
HC ₃ N	5.0×10^{-10}	Coustenis et al. (2016)
C ₂ H ₂	3.0×10^{-6}	Coustenis et al. (2016)
C ₂ H ₄	1.0×10^{-7}	Coustenis et al. (2016)
C ₂ H ₆	1.0×10^{-5}	Coustenis et al. (2016)
C ₃ H ₈	1.5×10^{-6}	Coustenis et al. (2016)
CO	4.6×10^{-5}	Maltagliati et al. (2015)
C ₆ H ₆	4.0×10^{-10}	Coustenis et al. (2016)

Notes. N₂ abundance has been normalised so that the total sum of the volume mixing ratios of all the gases of our reference atmosphere is equal to 1. Asterisks denote the gases for which the abundances are retrieved. Their volume mixing ratios are a priori values.

where I_i is the measured radiance at the wavenumber w_i , and x_j the value of a given retrieved parameter (e.g. temperature, scale factor toward the a priori profile for a gas) at the pressure level p_j . Figure 3 shows the inversion kernels for temperature at wavenumbers within the continuum (90 cm⁻¹ and 133 cm⁻¹) and three rotational CH₄ bands (73 cm⁻¹, 104.25 cm⁻¹, and 124.75 cm⁻¹). The continuum emission depends on the extinction profile of haze 0, and on the temperature near the tropopause (between 80 mbar and 200 mbar). The CH₄ bands allow us to measure the temperature in the lower stratosphere between 10 mbar and 20 mbar. Figure 5 shows representative examples of retrieved temperature profiles in the region probed by the CH₄ bands.

Figure 4 shows the normalised inversion kernels of C₄H₂, C₂N₂, and C₃H₄ plotted respectively at 220.25 cm⁻¹, 234 cm⁻¹, and 326.75 cm⁻¹ for different latitudes and times. For the three species, at all latitudes, the maxima of the inversion kernels are at 15 mbar (85 km). This is deeper than the average pressure levels probed by *Cassini*/CIRS mid-infrared limb (from 5 mbar to 0.001 mbar) and nadir observations (~10 mbar). The width of the contribution function varies slightly throughout the different datasets, but the pressure level of the maximum stays constant.

To evaluate the robustness of our results, we perform retrievals with a wide range of a priori temperatures and compositions. We use different a priori temperature profiles from [Achterberg et al. \(2008\)](#) to retrieve the temperature from the FP1 spectra. When there are FP4 spectra acquired at the same latitude (within $\pm 5^\circ$) and time (within 3 months) as the considered FP1 spectra, we retrieve a temperature profile from the FP4 spectra and use it as an a priori in an additional FP1 retrieval. Indeed, the CH₄ ν_4 band (1304 cm⁻¹) visible in the FP4 spectra is sensitive to the temperature between 2 mbar and 0.5 mbar, with a peak sensitivity at 1 mbar. Figure 5 shows examples of temperature retrievals performed on the same dataset (FP1 spectra measured at 35°N in March 2009), with different a priori profiles. Between

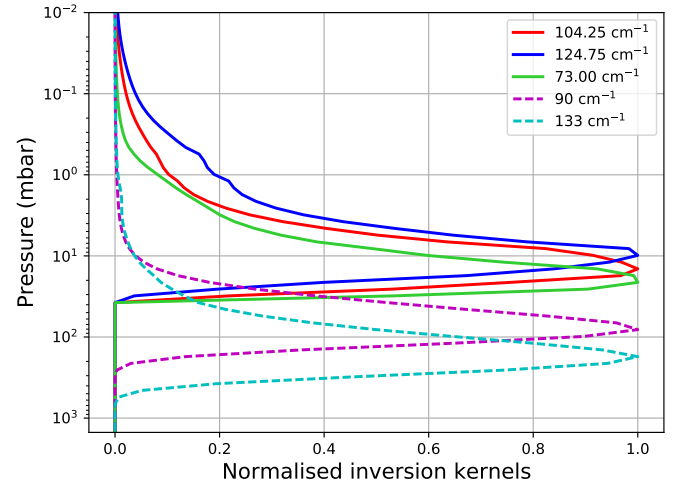


Fig. 3. Normalised inversion kernels for temperature retrievals from the FP1 spectra. Solid lines are inversion kernels obtained within three rotational CH₄ bands. Dashed lines are inversion kernels for two wavenumbers in the continuum. CH₄ rotational bands (from 70 cm⁻¹ to 170 cm⁻¹) probe the stratospheric temperature between 10 mbar and 20 mbar. Wavenumbers in the continuum probe the temperature around the tropopause from 80 mbar to 200 mbar.

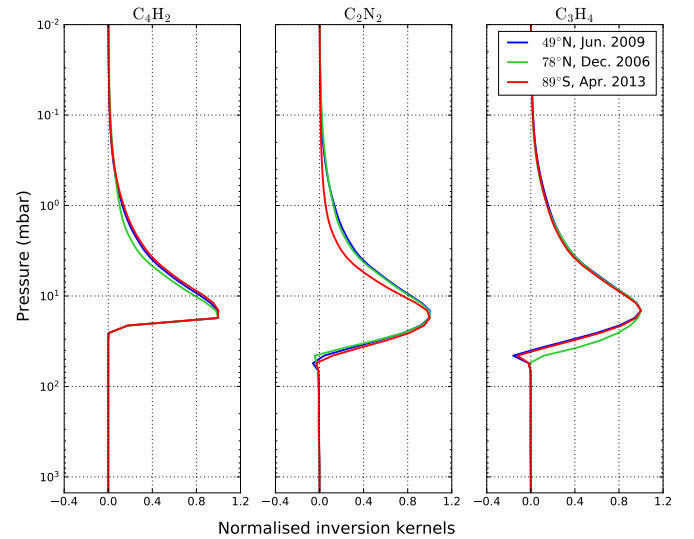


Fig. 4. Normalised inversion kernels for C₄H₂ (220.25 cm⁻¹), C₂N₂ (234 cm⁻¹), and C₃H₄ (326.75 cm⁻¹) at different latitudes. The FP1 data probe the lower stratosphere between 5 mbar and 15 mbar; the peak sensitivity is at 15 mbar.

10 mbar and 20 mbar, the temperature profiles retrieved from FP1 do not depend on the chosen a priori profile. Above the 10 mbar pressure level, the retrieved temperature profiles tend toward their respective a priori, whereas below the 20 mbar level, they are influenced by the information coming from the continuum emission. We also use several scale factors toward the a priori profiles of hazes and retrieved gases for FP1, and various errors on these profiles or scale factors. These tests show that our results are not sensitive to a priori assumptions, and allow us to find the best fit of the measured spectra.

3.3. Correction of error bars

We noticed that in the FP1 spectra, error bars provided by the calibration are too small, i.e. they do not take into account all

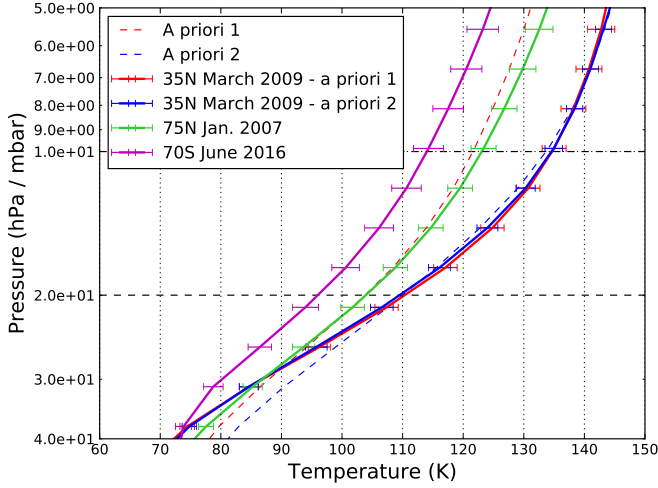


Fig. 5. Examples of temperature profiles over the whole range of temperature profiles retrieved in this study. For the observations at 35°N in March 2009, we show temperature profiles obtained with two different a priori profiles. A priori 1 is a temperature profile measured by Achterberg et al. (2008), while a priori 2 is the profile retrieved from FP4 observations performed at 30°N in June 2009. Black horizontal dashed lines show the sensitivity limits of the FP1 temperature retrievals. Error bars on the profiles do not take into account the errors related to CH₄ variations (see Sect. 3.6).

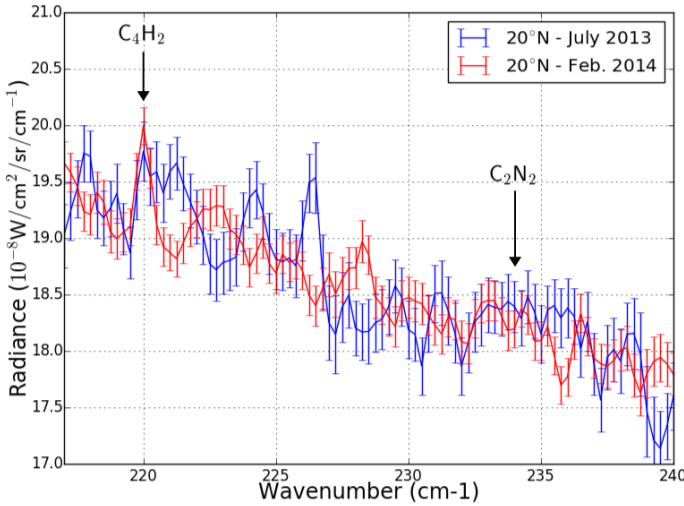


Fig. 6. Spectra measured at 20°N in July 2013 (blue) and February 2014 (red), between 217 cm⁻¹ and 240 cm⁻¹. Here we show the error bars from the photometric calibration provided by the CIRS team. These error bars are too small to take into account the spurious noise features in each spectrum or some of the radiance differences between these two spectra.

the noise radiance variations of the spectra. Figure 6 shows two averaged spectra obtained at 20°N at two close dates (July 2013 and February 2014). We selected two datasets where the signal-to-noise ratio is particularly low as it makes the issue described here more visible. In this example, the average radiances of these spectra are equal, but the radiance variations due to the noise features are too large with respect to the error bars. As this can lead to an overestimation of the level of detection of the studied species, we make our own estimation of the error bars by measuring the radiance variations due to noise around the spectral bands of C₄H₂ (220 cm⁻¹), C₂N₂ (234 cm⁻¹), C₃H₄ (327 cm⁻¹).

To compute the new error bars, for each FP1 spectrum, we first fit the continuum component, i.e. the spectrum

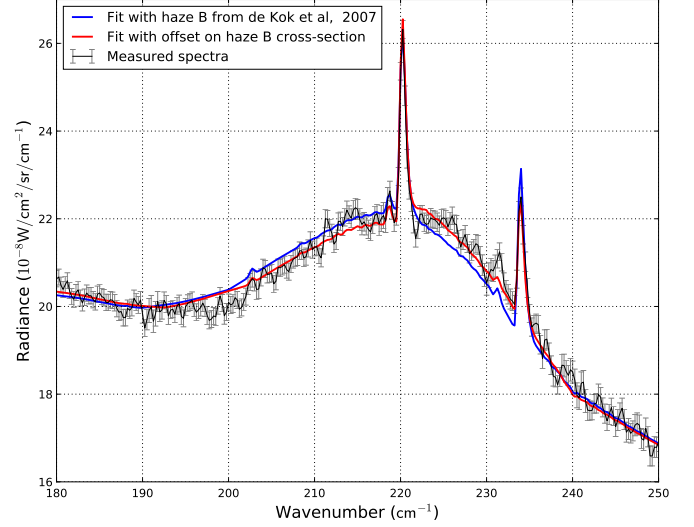


Fig. 7. Fits of a high latitude spectrum during winter. The black spectrum was measured with FP1 at 89°N in March 2007. The blue and red lines indicate respectively the fits of this spectrum with the haze B cross-sections as measured by de Kok et al. (2007) and with the addition of a small offset (2.5 cm⁻¹) to haze B cross-sections from 190 cm⁻¹ to 240 cm⁻¹. Without this correction, the continuum is overestimated by NEMESIS around the C₄H₂ band and underestimated around the C₂N₂ band.

without C₄H₂ (219–222 cm⁻¹), C₂N₂ (233–236 cm⁻¹), and C₃H₄ (322–334 cm⁻¹). Then, we define the following domains in regions of the spectra without strong emission lines around the retrieved gases:

- [214; 219[∪]222; 225] cm⁻¹ (around the C₄H₂ band);
- [228.5; 233[∪]236; 241] cm⁻¹ (around the C₂N₂ band);
- [317; 322[∪]334; 337] cm⁻¹ (around the C₃H₄ band).

In each of these spectral domains, we estimate the new error bars σ with

$$\sigma = \max(I_{\text{mes}} - I_{\text{cont}})$$

with I_{mes} the measured radiance and I_{cont} the synthetic spectrum of the continuum. We use σ as the new value of the minimum error in the whole domain (including the band of the considered gas).

3.4. Correction of the continuum at high latitudes during autumn and winter

We note that in several spectra acquired at high northern and southern latitudes (from 70°N/S to 90°N/S) during their respective winter (2006–2007) and autumn (2014–2016), the continuum component has a different shape in the 190–240 cm⁻¹ range from that in the other spectra acquired at different latitudes or seasons. This shape is characterised by a broad emission feature centred at 220 cm⁻¹. Previous studies such as Coustenis et al. (1999), Anderson et al. (2012), Jennings et al. (2012, 2015) measured the same spectral feature in Voyager/IRIS and Cassini/CIRS data, at similar latitudes and seasons, and suggested that it could be caused by a mixture of nitrile condensates. This new shape of the continuum could not be fitted correctly with temperature, and the cross-sections and vertical distributions measured for hazes 0 and B by de Kok et al. (2007, 2010). For instance, in Fig. 7, we compare the spectrum

measured at 89°N in March 2007 and its fit by NEMESIS using our nominal parameters for the hazes. Between 190 cm⁻¹ and 222 cm⁻¹, the radiance of the continuum of the measured spectrum is lower than the radiance of the continuum fitted by NEMESIS, whereas there is the opposite situation from 222 cm⁻¹ to 240 cm⁻¹. Wavenumbers from 240 cm⁻¹ to 400 cm⁻¹ are not affected by this feature. This change in the continuum shape is an issue when trying to fit C₄H₂, C₂N₂, and C₃H₄, as it affects the fits of C₄H₂ and C₂N₂ bands, and leads to an underestimation of the abundance of C₄H₂ and an overestimation of the abundance of C₂N₂.

However, we note that the continuum in the haystack region (190–240 cm⁻¹) can be fitted by adding a small offset in wavenumber to the cross-sections of haze B for the affected datasets. For the spectra measured at high northern latitudes during the winter (2006–2007), this offset is between 2 cm⁻¹ and 2.5 cm⁻¹, while its value is between 2.5 cm⁻¹ and 3 cm⁻¹ for the observations of high southern latitudes during autumn (2012–2016). This offset would be consistent with the appearance of new condensates as suggested by the previous studies. The small difference between the offset values in the northern and southern high latitudes may be due to the fact that they were observed at different seasons (northern winter and southern autumn), and thus different stages of the chemical evolution at the poles.

3.5. Upper limits

For each FP1 dataset, we evaluate the level of detection of C₄H₂, C₂N₂, and C₃H₄. For each gas, we define the χ^2 as

$$\chi^2 = \sum_{i=1}^N \frac{(I_{\text{mes}}(w_i) - I_{\text{fit}}(w_i, x))^2}{2\sigma_i^2}, \quad (2)$$

where $I_{\text{mes}}(w_i)$ and $I_{\text{fit}}(w_i, x)$ are respectively the radiance measured at the wavenumber w_i and the fitted radiance at the same wavenumber for the volume mixing ratio x of the considered gas, N is the total number of points in the measured spectra, and σ_i is the error on the radiance measured at the wavenumber w_i . The factor 2 in the denominator is the oversampling factor of the data.

Then we compute the misfit $\Delta\chi^2$ defined as

$$\Delta\chi^2 = \chi^2 - \chi_0^2, \quad (3)$$

where χ_0^2 is the χ^2 obtained when we fix the abundance of the considered gas to $x = 0$. The 1- σ , 2- σ , or 3- σ detection level is reached when $\Delta\chi^2$ is respectively inferior to -1, -4, or -9. Most of the spectra acquired at high and mid-northern latitudes and at the south pole in autumn allow us to measure the abundances of C₂N₂, C₃H₄, and C₄H₂ with a confidence level greater than 3- σ .

For some datasets, mostly the observations in the equatorial region, at southern mid-latitudes, and at southern high latitudes during summer, the signal-to-noise ratio is not good enough to detect the spectral bands of one or several of the studied species. For these datasets, for each undetected gas, we obtain an upper limit of its volume mixing ratio x by calculating synthetic spectra for different values of x , starting with $x = 0$ and incrementing it progressively. For each of these synthetic spectra, we compute the misfit $\Delta\chi^2$. The value of x for which $\Delta\chi^2$ is minimum is the upper limit for the volume mixing ratio of the considered gas. In these cases, $\Delta\chi^2$ is positive and values of 1, 4, and 9 respectively indicate a 1-, 2-, or 3- σ upper limit.

Table 2. Error estimation on the temperature and gases retrievals.

Noise and retrieval [CH ₄] variations Quadratic sum			
Temperature	±1.6%	+3%	+3.4% -1.6%
C ₂ N ₂	±16%	-16%	+16% -23%
C ₃ H ₄	±7%	-5%	+7% -9%
C ₄ H ₂	±7%	-15%	+7% -17%

3.6. Error analysis

Our retrievals are mainly affected by three error sources: measurement noise, errors related to the retrieval process (e.g. smoothing of the retrieved profile, forward modelling error), and the uncertainty on the CH₄ abundance. The effects of the first two error sources are directly estimated by NEMESIS. Lellouch et al. (2014) showed that at 15 mbar, CH₄ abundance varies from 1.0 to 1.5%. The upper value is consistent with the measurements from Niemann et al. (2010), which is the CH₄ abundance used in our reference atmosphere. We perform additional retrievals to evaluate how a CH₄ abundance as low as 1.0% would affect our results. We find that the temperature retrieved at 15 mbar would increase by 4–5 K (which is consistent with the results of Lellouch et al. 2014), and that the uncertainty on the CH₄ abundance is the dominant error source for the temperature retrievals. This temperature change would also decrease the retrieved volume mixing ratios of C₂N₂, C₃H₄, and C₄H₂. For C₂N₂ and C₃H₄, the difference between retrievals performed with 1.0% and 1.48% of CH₄ is comparable to the combined effect of measurement noise and retrieval errors. For C₄H₂, the effect of CH₄ variation is twice as big as that of the other error sources. These results are summarised in Table 2.

4. Results

4.1. Radiance evolution at high latitudes

Figure 8 shows the spectra measured at 75°N (top panel) in 2007 and 2014, and at 70°S between 2007 and 2016. At both latitudes there is a striking evolution of the measured radiances as Titan's atmosphere goes from northern winter to spring. Radiance variations of this amplitude are only observed at high northern and southern latitudes. In both cases presented in Fig. 8, the largest change in the measured radiance occurs between 200 cm⁻¹ and 250 cm⁻¹. At 75°N the broad emission feature centred on 220 cm⁻¹ present during northern winter (2007) completely disappeared in mid-spring. The amplitude of the spectral bands of C₄H₂ (220 cm⁻¹) and C₂N₂ (234 cm⁻¹) slightly decreased from 2007 to 2014, but these bands are still clearly visible in 2014.

At 70°S, the temporal coverage of the data is better than at 75°N and allows us to follow more precisely the evolution of the radiance at this latitude. A broad emission feature centred at 220 cm⁻¹, similar to what was observed at the northern high latitudes appeared in 2013 and its radiance increased steeply from October 2013 to June 2016, while radiances between 250 cm⁻¹ and 400 cm⁻¹ (except in C₃H₄ band at 327 cm⁻¹) stayed constant during this period. The radiance in the broad emission feature (except in C₄H₂ band) is higher at 70°S in 2014 and 2016 (southern autumn) than at 75°N in 2007 (northern winter). The radiance in the bands of C₄H₂ (220 cm⁻¹) and C₂N₂ (234 cm⁻¹) also evolved rapidly from southern summer to mid-autumn. In

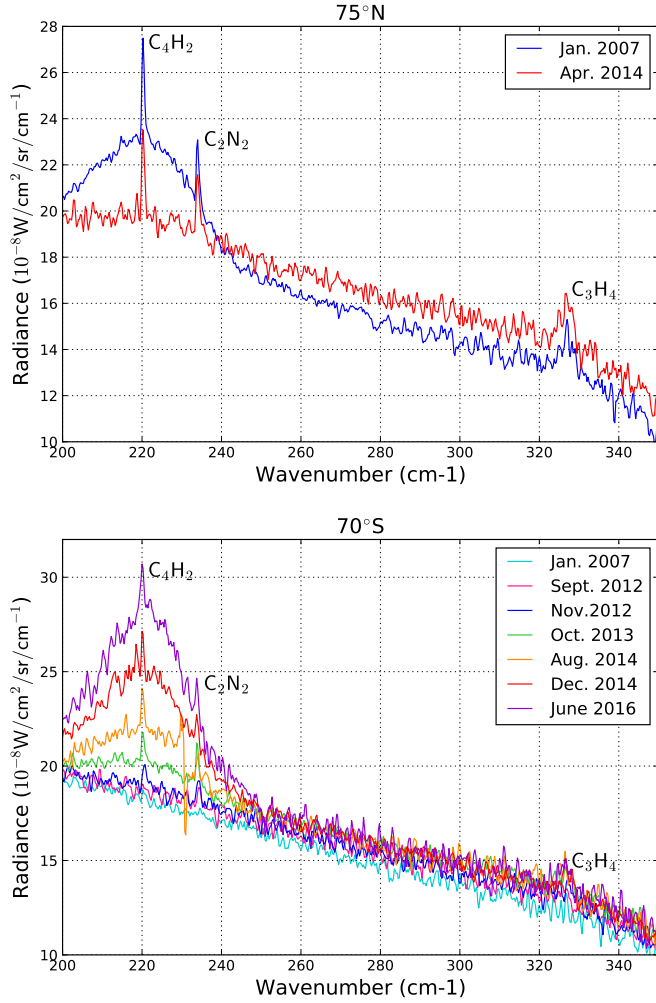


Fig. 8. Evolution of measured radiances at 75°N (top panel) and 70°S (bottom panel) from 2007 (northern winter) to 2016 (mid-spring). The sharp variation in the radiance between 228 cm^{-1} and 231 cm^{-1} in the spectra measured in August 2014 is a spurious noise feature which could not be eliminated during the calibration process. From 2007 to 2016, radiance at high southern latitudes has strongly increased, whereas it has decreased at high northern latitudes.

2007, the signal-to-noise ratio in the vicinity of the bands of C_4H_2 and C_2N_2 was too low to distinguish these spectral features unambiguously. After September 2012, their radiances increased remarkably within a few months. The radiances of the C_3H_4 (327 cm^{-1}) band also increased during the same period, but more slowly than the other gases. The evolution of the radiances in the spectral bands of C_4H_2 , C_3H_4 , and C_2N_2 is faster at 70°S than at 75°N. The changes in the radiances at 75°N and 70°S suggest a significant seasonal evolution of the lower stratospheric composition.

4.2. Evolution of the meridional distributions of C_4H_2 , C_2N_2 , and C_3H_4

Figure 9 shows the retrieved evolution of the meridional distributions of C_4H_2 , C_2N_2 , and C_3H_4 from 2006 (northern winter) to 2016 (late spring) at the 15 mbar pressure level (or an altitude of ~85 km).

The most striking feature in the plots of Fig. 9 is the sudden and steep increase of the abundances of C_4H_2 , C_2N_2 , and

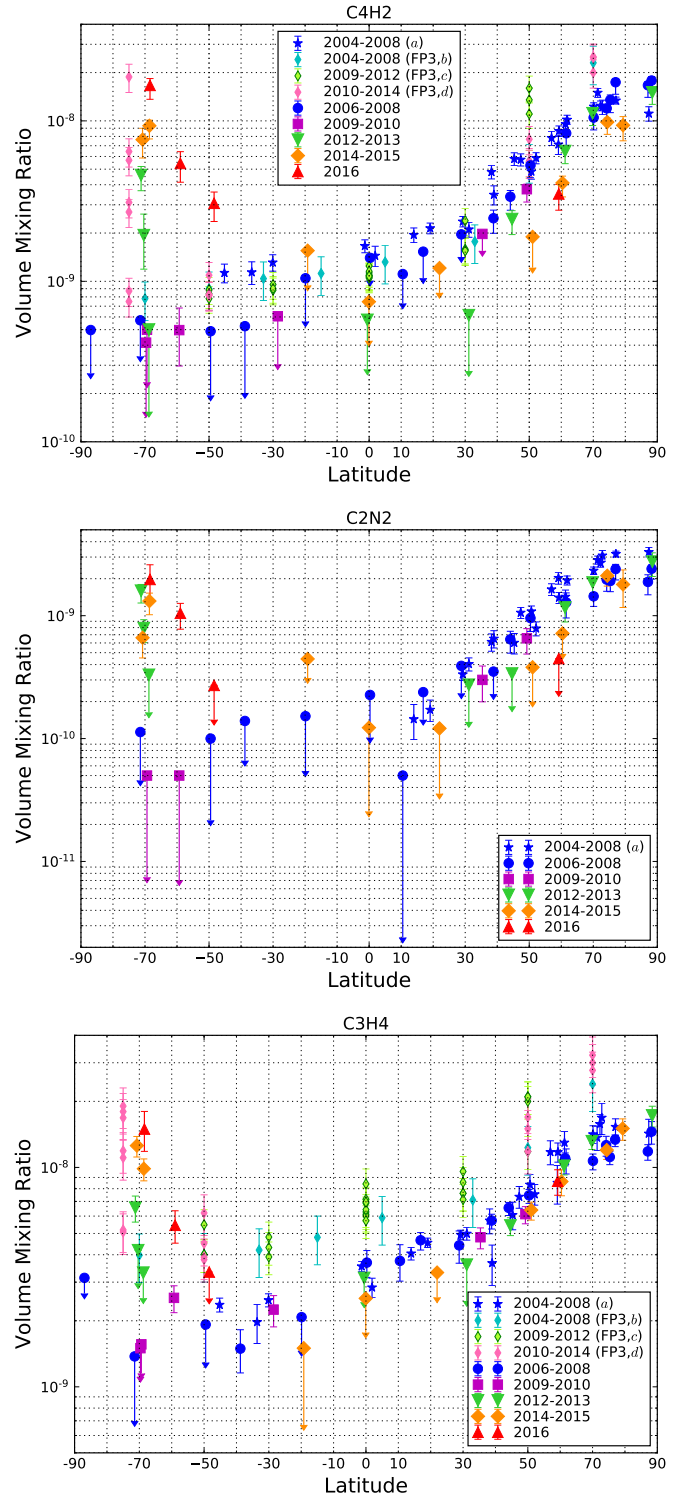


Fig. 9. Meridional distributions of C_4H_2 , C_2N_2 , and C_3H_4 from 2006 (northern winter) to 2014 (mid-northern spring) at 15 mbar (or an altitude of ~85 km). “a” refers to Teanby et al. (2009a), where the same gases as in this study were measured with the same CIRS detector (FP1); “b”, “c”, and “d” respectively refer to Coustenis et al. (2010), Bampasidis et al. (2012), and Coustenis et al. (2016). C_4H_2 and C_3H_4 were measured with the CIRS detector FP3, probing slightly higher pressure levels (10 mbar) than this study. In the south pole, from 2006 to 2015, the volume mixing ratios of the three species strongly increased, while the other latitudes exhibit weak seasonal variations. Unlike C_4H_2 and C_3H_4 , C_2N_2 abundance at mid-northern latitudes decreases from 2012. Error bars show relative errors as derived in Sect. 3.6.

Table 3. Interannual comparison between abundances of C_4H_2 , C_2N_2 , and C_3H_4 measured by Voyager I/IRIS in November 1980 (Coustenis & Bezaud 1995) and in this study in 2009.

Latitude	C_4H_2		C_2N_2		C_3H_4	
	1980	2009	1980	2009	1980	2009
30°S	$1.3 \pm 0.3 \times 10^{-9}$	$<6.1 \times 10^{-10}$	$<1.5 \times 10^{-9}$	–	$4.5 \pm 0.7 \times 10^{-9}$	$2.3 \pm 0.2 \times 10^{-9}$
30°N	$1.2 \pm 0.4 \times 10^{-9}$	$2.0^{+0.1}_{-0.3} \times 10^{-9}$	$<2.0 \times 10^{-9}$	$3.0^{+0.5}_{-0.7} \times 10^{-10}$	$6.0 \pm 1.6 \times 10^{-9}$	$4.8^{+0.3}_{-0.4} \times 10^{-9}$
50°N	$1.5 \pm 0.2 \times 10^{-8}$	$3.8^{+0.3}_{-0.6} \times 10^{-9}$	$1.5 \pm 0.2 \times 10^{-8}$	$6.5^{+1.0}_{-1.5} \times 10^{-10}$	$3 \pm 0.2 \times 10^{-8}$	$6.1^{+0.4}_{-0.5} \times 10^{-9}$

C_3H_4 from 2006 to 2016 at high southern latitudes (poleward of 70°S). During this period, at 70°S, abundances increased by at least a factor of 39 for C_4H_2 , 39 for C_2N_2 , and 10 for C_3H_4 . Most of this increase happened between 2012 and 2013. For instance, a factor of 2.4 can be measured between two consecutive measurements of C_4H_2 volume mixing ratios at 70°S during this period.

In contrast, the other latitudes show smaller variations in the abundances of the studied gases. At high northern latitudes (poleward of 70°N), the volume mixing ratios of C_4H_2 , C_2N_2 , and C_3H_4 have stayed constant from 2006 to 2015. In the northern hemisphere, between 30°N and 70°N, C_3H_4 exhibits a different seasonal evolution from C_4H_2 and C_2N_2 . Indeed, C_3H_4 abundance is constant from winter to late spring (from 2006 to 2016), whereas abundances of C_4H_2 and C_2N_2 are constant from winter to early spring (from 2006 to 2010), and then decrease in the middle of spring (after 2012). In equatorial and mid-southern latitudes (from 25°N to 65°S), C_4H_2 and C_3H_4 volume mixing ratios do not vary significantly from 2006 to 2015, then they increase in 2016 around 50°S–60°S. This evolution is sharp for C_4H_2 (increasing by a factor 11) and weaker for C_3H_4 (increasing by a factor 2). For C_2N_2 , there are fewer data points at equatorial and mid-southern latitudes because of the weaker signal-to-noise ratio in this band, but it seems to follow the same evolution as C_3H_4 and C_4H_2 .

The meridional distributions of the three gases follow the same trend in northern winter (2006–2008) and in early spring (2009–2010), with a decrease from the north pole to the south pole. This shape starts to evolve in mid-spring (2012) with the sudden enrichment in gases of the high southern latitudes. Then in late spring (2015–2016), the distributions of C_2N_2 , C_3H_4 , and C_4H_2 at other latitudes slowly begin to evolve toward a more symmetrical shape, with a decrease from poles to equator.

5. Discussion

5.1. Comparison with previous Cassini/CIRS measurements

In Fig. 9, our measurements are compared to the results from previous Cassini/CIRS observations of Titan’s lower stratosphere. These abundances were inferred from

- nadir FP1 0.5 cm^{-1} resolution spectra (same type of data as in this study) from Teanby et al. (2009a) during northern winter (2004–2008);
- nadir FP3 0.5 cm^{-1} resolution spectra from Coustenis et al. (2010) during northern winter (2004–2008), Bampasidis et al. (2012) during early northern spring (2009–2012), and Coustenis et al. (2016) during mid-northern spring (2010–2014).

Our results for the period 2006–2008 are in overall good agreement with the results of Teanby et al. (2009a). The C_2N_2 and

C_3H_4 abundances measured in this study from 2006 to 2008 are similar to the values of Teanby et al. (2009a). We find slightly lower C_4H_2 abundances than they do, but this is probably due to the update of the spectroscopic parameters for the C_4H_2 band at 220 cm^{-1} in GEISA 2015.

The comparison between our results for C_3H_4 and C_4H_2 and the FP3 measurements of Coustenis et al. (2010, 2016) and Bampasidis et al. (2012) shows that although we obtain values of the same order of magnitude, we often measure lower abundances. This is particularly visible on C_3H_4 (at all seasons and latitudes), whereas C_4H_2 abundances inferred in this study are similar to Coustenis et al. (2010) in 2006–2008, then lower than Bampasidis et al. (2012) and Coustenis et al. (2016) after 2009. As these studies were performed in the 600–1100 cm^{-1} region, C_4H_2 and C_3H_4 were not probed with the same spectral bands as those in our study. This might be responsible for the small disparities between the results from nadir FP3 observations and this study. Differences between the retrieval codes (NEMESIS and ARTT) may also be at play. FP1 and FP3 results may also be different because FP3 nadir observations probe slightly lower pressures (around 10 mbar or ~100 km) than FP1 nadir observations (around 15 mbar or ~85 km). This would be consistent with the predictions of photochemical models such as Wilson & Atreya (2004), Krasnopolsky (2014) and Dobrijevic et al. (2016), where C_3H_4 and C_4H_2 profiles increase weakly with altitude in Titan’s lower stratosphere.

5.2. Interannual variations

In Table 3, we compare the results inferred from Voyager I/IRIS observations by Coustenis & Bezaud (1995) with the abundances of C_4H_2 , C_3H_4 , and C_2N_2 measured with Cassini/CIRS in this study. While we measure similar abundances at 30°N, we obtain values slightly lower at 30°S, and significantly lower at 50°N than Coustenis & Bezaud (1995). The largest difference between these two sets of measurements is reached for C_2N_2 at 50°N: there is a factor of 23 difference between this study and the Voyager results. Coustenis et al. (2013) compared Voyager and Cassini/CIRS FP3 results and also found smaller C_4H_2 and C_3H_4 abundances in 2009 than in 1980 at 50°N. They suggested that this could be due to variations of the solar activity, as 1980 observations occurred during a solar maximum. Our study shows that C_2N_2 follows the same trend, which is consistent with this explanation.

5.3. Influence of abundances at lower pressure levels on the nadir measurements

In this paper, we use uniform a priori profiles to retrieve C_4H_2 , C_2N_2 , and C_3H_4 . In Vinatier et al. (2015), the authors measured the vertical profiles of C_4H_2 and C_3H_4 using Cassini/CIRS limb

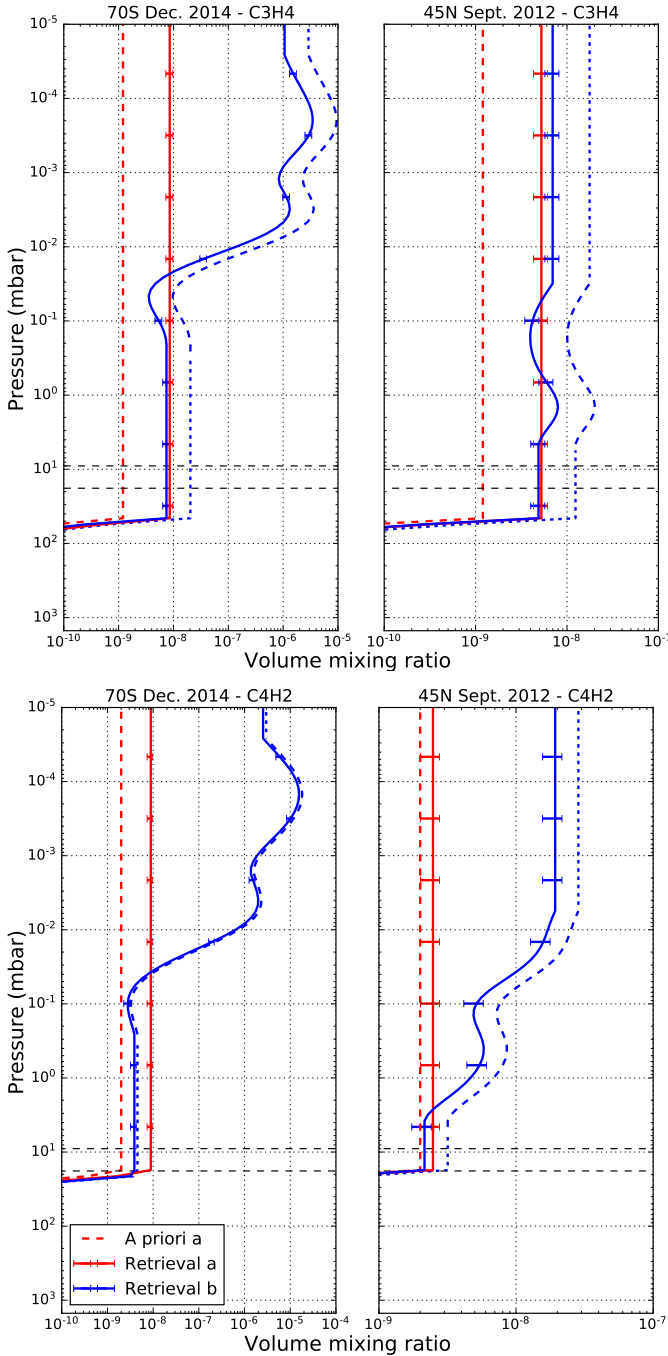


Fig. 10. Vertical profiles of C_3H_4 (top panels) and C_4H_2 (bottom panels) retrieved at 70°S in December 2014 (left panels) and 45°N in September 2012 (right panels). Vertical profiles from retrievals (a) and their a priori are respectively represented by red solid and dashed lines. Vertical profiles from retrievals (b) are represented by blue solid lines. A priori profiles for retrievals (b) are represented by blue dashed lines within the pressure range probed by the CIRS limb observations, and by blue dotted lines outside this pressure range. Thin black dashed lines show the pressure range probed by our CIRS nadir observations. The limb profiles on the left and right panels (blue dashed lines) were respectively measured at 79°S in September 2014 and 46°N in June 2012. At the pressure levels probed by our observations, retrievals (a) and (b) give consistent results, except for C_4H_2 at 70°S in December 2014, because of the high vertical gradient of the a priori profile (b).

observations, and they showed that the vertical gradients of the abundance of these gases can be steep and exhibit strong temporal variations. In Fig. 10, we show two examples of vertical

profiles of C_4H_2 and C_3H_4 measured by [Vinatier et al. \(2015\)](#). The abundances measured for these two gases at 79°S in September 2014 (blue dashed lines in the left panels) show a strong enrichment at low pressures (enrichment by a factor of 200 between 0.1 mbar and 0.01 mbar), while much weaker vertical variations were measured at 46°N in 2012 (blue dashed lines in the right panels).

In order to evaluate how the shape of the vertical profiles of C_3H_4 and C_4H_2 , and especially how an enrichment in these species at high altitude can affect our results, we retrieve best-fitting scale factors for C_3H_4 and C_4H_2 , using the limb measurements from [Vinatier et al. \(2015\)](#) as a priori profiles. Above the upper sensitivity limit of the limb data, we use a constant vertical profile. Below the lower sensitivity limit of the limb data, we also set the profile to a constant value with pressure until we reach the condensation level, where the shape of the profile decreases to mimic the condensation of the two considered species.

We perform these retrievals for several nadir datasets acquired at several latitudes and seasons (72°N in April 2007, 45°N in September 2012, 75°N in April 2014, 70°S in December 2014) using limb profiles measured at close latitudes and times (70°N in August 2007, 46°N in June 2012, 71°N in January 2015, 79°S in September 2014). In the following paragraph, we discuss the effects of the C_4H_2 and C_3H_4 a priori profiles with the largest and the smallest vertical gradients using two observations:

- the retrieval of the nadir data at 45°N observed in September 2012, using the limb profile measured at 46°N in June 2012 as an a priori (low vertical gradients);
- the retrieval of the nadir data at 70°S observed in December 2014, using the limb profile measured at 79°S in September 2014 as an a priori (high vertical gradients).

Figure 10 shows the comparison between the results obtained using constant a priori profiles (retrievals (a)) and a priori profiles from the limb observations of [Vinatier et al. \(2015\)](#) (retrievals (b)), for C_4H_2 and C_3H_4 for the selected examples. Figure 11 shows the inversion kernels obtained for C_4H_2 and C_3H_4 with the retrievals (a) and (b).

Low vertical gradient – 45°N in September 2012

When the vertical gradients in the a priori profiles of C_4H_2 and C_3H_4 are low, the inversion kernels of the retrievals (a) and (b) are slightly different; the volume mixing ratios measured at higher altitude are large enough to broaden the base of the contribution functions. However, these variations of the contribution function are small compared to the size of its main lobe. This is consistent with the fact that the profiles obtained from retrievals (b) are within error bars from the profiles (a) at the pressure levels probed by nadir observations (from 18 mbar to 9 mbar). Above this pressure range, the difference between the profiles (a) and (b) is larger than the error bars because we retrieve a scale factor of the a priori profiles.

High vertical gradient – 70°S in December 2014

When the vertical gradients of the a priori profiles of C_3H_4 and C_4H_2 are high, a second lobe can appear in the contribution functions. For C_3H_4 , this second lobe is small compared to the main lobe, which means that the enrichment in C_3H_4 measured around 0.004 mbar does not affect the nadir measurements at 15 mbar. For C_4H_2 , the second peak of the contribution function is not

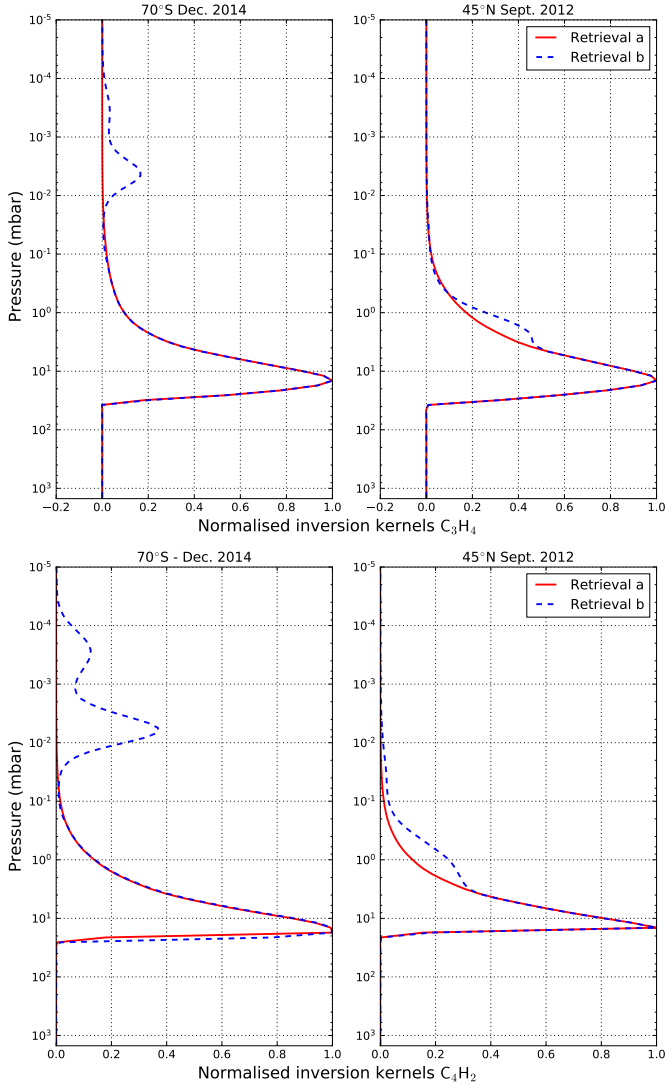


Fig. 11. Inversion kernels for retrievals *a* (red solid line) and *b* (blue dashed lines) for C_3H_4 (top) and C_4H_2 (bottom). They were calculated from the nadir retrievals performed with the observations at 70°S in December 2014 (left panels) and 45°N in September 2012 (right panels). The vertical gradients of the a priori profiles can affect the shape of the contribution functions.

negligible compared to the main peak. As a result, the profile (*b*) is significantly lower than the profile (*a*) in the sensitivity range because of the contribution from high altitudes. There is a factor of 2.3 between these two profiles of C_4H_2 , which is the greatest difference found among the different datasets for which we performed these tests. Profiles (*a*) and (*b*) of C_3H_4 are within error bars. Thus, we can conclude that the abundances of C_4H_2 from the nadir measurements at high southern latitudes during autumn may be slightly overestimated, by less than a factor 2.3. However, the relative abundances variations of C_4H_2 remain robust.

5.4. Implications for photochemistry and atmospheric dynamics

The seasonal evolution of the abundances of the trace species is the result of a complex interplay between photochemistry and atmospheric dynamics. Measurements of the trace species distribution at several latitudes and altitudes help to explain these different processes.

Global climate models (GCM; Hourdin et al. 1995; Tokano et al. 1999; Lebonnois et al. 2012) predict that atmospheric circulation of Titan takes the form of a global cell with an upwelling branch above the summer pole and a subsiding branch above the winter pole. Around equinoxes, as the atmospheric circulation is reversing, there are two Hadley cells with upwelling at the equator and subsidence above the poles. The seasonal evolution of the abundances of C_4H_2 , C_2N_2 , and C_3H_4 at 15 mbar can be related to the effects of atmospheric dynamics in the lower stratosphere. According to the predictions of the GCMs, high latitudes should be particularly sensitive to the seasonal changes, which is in good agreement with our observations at Titan’s south pole. Indeed, in Sect. 4, we show that after 2012, during southern autumn, high southern latitudes exhibit a strong and sudden enrichment in C_2N_2 , C_4H_2 , and C_3H_4 . This is similar to what has been measured at higher altitudes in the stratosphere by previous studies (Teanyby et al. 2012; Vinatier et al. 2015; Coustenis et al. 2016). This enrichment has been interpreted as the effect of the subsiding branch of the Hadley cell above these latitudes, carrying these photochemical products from the upper stratosphere. Our measurements (see Fig. 9) show that this subsidence above the autumn pole also affects this part of the stratosphere, in good agreement with the atmospheric circulation predicted by the GCM of Lebonnois et al. (2012). In addition, in Teanyby et al. (2012), Vinatier et al. (2015), the authors show that the enrichment in species such as HCN, C_4H_2 , or C_3H_4 appeared in the upper stratosphere at 500 km (0.001 mbar) between June and September 2011, during southern autumn. As the 15 mbar pressure level (~ 85 km of altitude) began to exhibit the same enrichment in C_4H_2 , C_3H_4 , and C_2N_2 between September and November 2012, we can infer that the air enriched in photochemical species has propagated toward the lower stratosphere in one year.

During winter, high northern latitudes were enriched in photochemical species, and contrarily to the southern high latitudes, they exhibit stable abundances of C_4H_2 , C_2N_2 , and C_3H_4 from northern winter to spring, similarly to what has been observed by Coustenis et al. (2016) for gases such as C_4H_2 , C_3H_4 , or C_6H_6 at 10 mbar. There is a strong difference between the seasonal variations of these species at the probed pressure level (15 mbar) and the seasonal variations measured at lower pressures by Vinatier et al. (2015). Indeed, they measured a strong enhancement of trace gases between 0.01 mbar and 0.001 mbar, after the equinox (in 2010), which disappeared one year later. Figure 12 shows the stream functions predicted by the GCM simulation from Lebonnois et al. (2012) during northern spring. Progressively, the circulation is evolving from two equator-to-pole cells to a single pole-to-pole cell (with upwelling above the north pole and downwelling above the south pole). Figure 12 shows that to reach this final state, the northern equator-to-pole cell shrinks in latitude and moves toward the north pole. This small cell may act like a “trap” for the photochemical species, keeping the amount of photochemical products constant near the north pole and preventing them from being advected toward the other latitudes by the bigger cell. The latitudinal extent of the small cell seems to vary with the pressure level: between 5 mbar and 11 mbar it extends from 60°N and 85°N , while it is very narrow at 0.1 mbar as it goes from 70°N to 75°N . This difference may explain why seasonal variations were measured at low pressures in limb measurements while abundances stay constant in our nadir measurements.

The seasonal evolution of the poles is also characterised by the strong radiance variations shown in Fig. 8, centred at 220 cm^{-1} . Jennings et al. (2012, 2015) used Cassini/CIRS

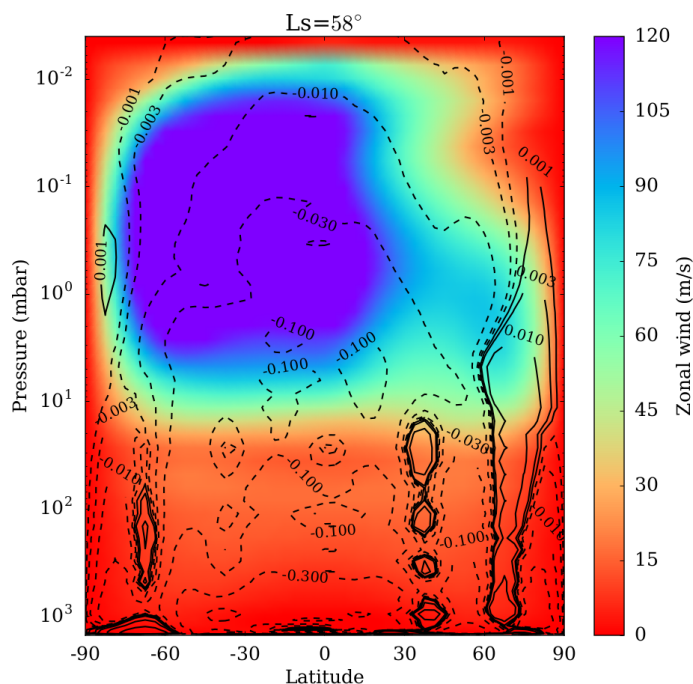


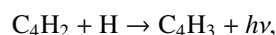
Fig. 12. Zonal winds and stream function (10^9 kg/s) at $L_S = 58^\circ$ (July 2014) from the numerical simulation in Lebonnois et al. (2012). Solid and dashed lines indicate respectively clockwise and anticlockwise rotation.

data to study this spectral feature and suggested (following Coustenis et al. 1999; de Kok et al. 2008; Anderson et al. 2012) that it is the signature of a cloud mainly composed of nitriles located between 80 km and 150 km. Jennings et al. (2012) suggested that the disappearance of this cloud above the north pole could be related to the increase in insolation at these latitudes which would lead to more photolysis of the source chemicals of this cloud at higher altitudes, and to a lessening of condensation, or to a weakening of the subsiding branch above the north pole. However, during spring, abundances of various gases have stayed constant (in this study and in Coustenis et al. 2016) in the lower stratosphere above high northern latitudes. This would imply that the disappearance of the cloud is more related to the seasonal insolation variations than to dynamics. Above the south pole, we show that the emission at 220 cm^{-1} has kept on increasing in 2014 and 2016, which is quite surprising as Jennings et al. (2015) suggested that a decrease in the radiances at these latitudes should occur in 2015–2016, based on north pole behaviour.

In this study, we find that meridional distributions of C₄H₂ and C₃H₄ do not evolve between 50°S and 30°N from 2006 to 2015. This is compatible with the results of Bampasidis et al. (2012), where the distributions of these gases were measured from 2006 to 2012. Bampasidis et al. (2012) also monitored sharp variations in C₃H₄ and C₄H₂ (and other gases such as C₂H₄ or HCN) between 2008 and 2010, characterised by a steep increase until mid-2009 and then a decrease in their abundances. They attributed this evolution to the rapid changes in atmospheric circulation around equinox, and especially the weakening of the vortex observed in the northern winter hemisphere. These temporal variations are not present in our data. It may be because we do not have enough data at 50°N in 2009–2010. It might also indicate that unlike higher pressure levels, the atmospheric circulation at 15 mbar does not exhibit sharp changes around the equinox, and evolves more steadily.

Photochemistry also controls the distribution of trace gases in the stratosphere. In Fig. 9, we show that at mid-northern latitudes C₃H₄ abundances are constant, while C₂N₂ and C₄H₂ abundances decrease in 2014–2016. The photochemical model of Lavvas et al. (2008) predicts that C₄H₂ photochemical lifetime at 150 km (2 mbar) is 0.2 yr, which is 10 times lower than for C₃H₄ (2 yr). If there is a similar difference between the photochemical lifetimes of these two species at 15 mbar, this can explain why a diminution of C₄H₂ abundances is observed, while C₃H₄ abundances do not vary. As C₂N₂ follows the same trend as C₄H₂, this would suggest that C₂N₂ and C₄H₂ photochemical lifetimes at 15 mbar are of the same order of magnitude.

Photochemical models disagree on the loss mechanisms of these species. In the photochemical model of Titan's atmosphere presented by Krasnopolsky (2014), photolysis is the major sink for C₂N₂ (68% of loss), whereas it is a minor loss mechanism for C₄H₂ and C₃H₄ (7% and 9% of loss respectively). This would mean that C₂N₂ could be more sensitive than C₄H₂ to the seasonal variations of insolation, which is not consistent with our results. However, in the photochemical model of Vuitton et al. (2014), photolysis is a minor loss reaction for the three studied species at the probed pressure-level. Their main loss reaction is the combination with atomic hydrogen, for instance,



which would be consistent with the fact that C₂N₂ and C₄H₂ vary in a similar way in the northern hemisphere during spring.

6. Conclusion

In this work, we study the seasonal evolution of Titan's lower stratosphere, using *Cassini*/CIRS far-infrared observations. These data allow us to probe the atmosphere around the 15 mbar pressure level and to measure the abundances of three photochemical by-products: C₂N₂, C₃H₄, and C₄H₂. Thanks to the long duration of the *Cassini* mission and the good latitudinal coverage of these data, we have been able to monitor the evolution of these species over the whole latitude range from 2006 to 2016, i.e. from northern winter to mid-spring.

The most striking feature is the asymmetry in the seasonal evolution of high northern latitudes where the volume mixing ratios of C₄H₂, C₂N₂, and C₃H₄ have stayed approximately constant from northern winter to spring, whereas high southern latitudes exhibit a sudden and strong enrichment in these species during southern autumn, consistent with the observations at 10 mbar of Coustenis et al. (2016). We also show that C₃H₄ has a different seasonal evolution compared to C₂N₂ and C₄H₂ at mid-northern latitudes, which may be due to shorter photochemical lifetimes for the two latter species.

The evolution of the high latitudes is consistent with the seasonal evolution of Titan's atmospheric circulation predicted by the GCM of Lebonnois et al. (2012) as the effect of a subsidence above the south pole and the presence of a small circulation cell towards the high northern latitudes can explain our results.

Acknowledgements. The authors thank Véronique Vuitton for very useful discussions about Titan's photochemistry and Emmanuel Lellouch for his comments about possible effects of high altitudes abundances on our retrievals. We also thank the anonymous reviewer for the suggestions that improved this paper. This research was funded by the UK Sciences and Technology Facilities Research council (grant number ST/M007715/1) and the *Cassini* project.

References

- Achterberg, R. K., Conrath, B. J., Gierasch, P. J., Flasar, F. M., & Nixon, C. A. 2008, *Icarus*, **194**, 263
- Anderson, C., Samuelson, R., & Achterberg, R. 2012, in *Titan Through Time, Unlocking Titan's Past, Present and Future*, eds. V. Cottini, C. Nixon, & R. Lorenz, 59
- Bampasidis, G., Coustenis, A., Achterberg, R. K., et al. 2012, *ApJ*, **760**, 144
- Borysow, A. 1991, *Icarus*, **92**, 273
- Borysow, A., & Frommhold, L. 1986a, *ApJ*, **311**, 1043
- Borysow, A., & Frommhold, L. 1986b, *ApJ*, **303**, 495
- Borysow, A., & Frommhold, L. 1986c, *ApJ*, **304**, 849
- Borysow, A., & Frommhold, L. 1987, *ApJ*, **318**, 940
- Borysow, A., & Tang, C. 1993, *Icarus*, **105**, 175
- Cottini, V., Nixon, C. A., Jennings, D. E., et al. 2012, *Icarus*, **220**, 855
- Coustenis, A., & Bézard, B. 1995, *Icarus*, **115**, 126
- Coustenis, A., Bézard, B., Gautier, D., Marten, A., & Samuelson, R. 1991, *Icarus*, **89**, 152
- Coustenis, A., Schmitt, B., Khanna, R. K., & Trotta, F. 1999, *Planet. Space Sci.*, **47**, 1305
- Coustenis, A., Achterberg, R. K., Conrath, B. J., et al. 2007, *Icarus*, **189**, 35
- Coustenis, A., Jennings, D. E., Nixon, C. A., et al. 2010, *Icarus*, **207**, 461
- Coustenis, A., Bampasidis, G., Achterberg, R. K., et al. 2013, *ApJ*, **779**, 177
- Coustenis, A., Jennings, D. E., Achterberg, R. K., et al. 2016, *Icarus*, **270**, 409
- de Kok, R., Irwin, P. G. J., Teanby, N. A., et al. 2007, *Icarus*, **191**, 223
- de Kok, R., Irwin, P. G. J., & Teanby, N. A. 2008, *Icarus*, **197**, 572
- de Kok, R., Irwin, P. G. J., & Teanby, N. A. 2010, *Icarus*, **209**, 854
- Dobrićević, M., Loison, J. C., Hickson, K. M., & Gronoff, G. 2016, *Icarus*, **268**, 313
- Flasar, F. M., Kunde, V. G., Abbas, M. M., et al. 2004, *Space Sci. Rev.*, **115**, 169
- Hanel, R., Conrath, B., Flasar, F. M., et al. 1981, *Science*, **212**, 192
- Hourdin, F., Talagrand, O., Sadourny, R., et al. 1995, *Icarus*, **117**, 358
- Irwin, P. G. J., Teanby, N. A., de Kok, R., et al. 2008, *J. Quant. Spectr. Rad. Transf.*, **109**, 1136
- Jacquinet-Husson, N., Armante, R., Scott, N. A., et al. 2016, *J. Mol. Spectr.*, **327**, 31
- Jennings, D. E., Anderson, C. M., Samuelson, R. E., et al. 2012, *ApJ*, **754**, L3
- Jennings, D. E., Achterberg, R. K., Cottini, V., et al. 2015, *ApJ*, **804**, L34
- Krasnopolsky, V. A. 2014, *Icarus*, **236**, 83
- Kunde, V. G., Aikin, A. C., Hanel, R. A., et al. 1981, *Nature*, **292**, 686
- Lavvas, P. P., Coustenis, A., & Vardavas, I. M. 2008, *Planet. Space Sci.*, **56**, 27
- Lebonnois, S., Burgalat, J., Rannou, P., & Charnay, B. 2012, *Icarus*, **218**, 707
- Lellouch, E., Bézard, B., Flasar, F. M., et al. 2014, *Icarus*, **231**, 323
- Maltagliati, L., Bézard, B., Vinatier, S., et al. 2015, *Icarus*, **248**, 1
- Molter, E. M., Nixon, C. A., Cordiner, M. A., et al. 2016, *AJ*, **152**, 42
- Niemann, H. B., Atreya, S. K., Demick, J. E., et al. 2010, *J. Geophys. Res. (Planets)*, **115**, E12006
- Nixon, C. A., Temelso, B., Vinatier, S., et al. 2012, *ApJ*, **749**, 159
- Teanby, N. A., de Kok, R., Irwin, P. G. J., et al. 2008a, *J. Geophys. Res. (Planets)*, **113**, E12003
- Teanby, N. A., Irwin, P. G. J., de Kok, R., et al. 2008b, *Icarus*, **193**, 595
- Teanby, N. A., Irwin, P. G. J., de Kok, R., et al. 2009a, *Icarus*, **202**, 620
- Teanby, N. A., Irwin, P. G. J., de Kok, R., & Nixon, C. A. 2009b, *Phil. Trans. Roy. Soc. London Ser. A*, **367**, 697
- Teanby, N. A., Irwin, P. G. J., Nixon, C. A., et al. 2012, *Nature*, **491**, 732
- Tokano, T., Neubauer, F. M., Laube, M., & McKay, C. P. 1999, *Planet. Space Sci.*, **47**, 493
- Tomasko, M. G., Bézard, B., Doose, L., et al. 2008a, *Planet. Space Sci.*, **56**, 648
- Tomasko, M. G., Doose, L., Engel, S., et al. 2008b, *Planet. Space Sci.*, **56**, 669
- Vinatier, S., Bézard, B., Nixon, C. A., et al. 2010, *Icarus*, **205**, 559
- Vinatier, S., Rannou, P., Anderson, C. M., et al. 2012, *Icarus*, **219**, 5
- Vinatier, S., Bézard, B., Lebonnois, S., et al. 2015, *Icarus*, **250**, 95
- Vuitton, V., Dutuit, O., Smith, M. A., & Balucani, N. 2012, in *Titan: Interior, Surface, Atmosphere, and Space Environment*, eds. I. Müller-Wodarg, C. A. Griffith, E. Lellouch, & T. E. Cravens (Cambridge: Cambridge University Press), 224
- Vuitton, V., Yelle, R. V., Klippenstein, S. J., Hörst, S. M., & Lavvas, P. 2014, in *AAS/Division for Planetary Sciences Meeting Abstracts*, **46**, 105.01
- Wilson, E. H., & Atreya, S. K. 2004, *J. Geophys. Res. (Planets)*, **109**, E06002
- Yung, Y. L. 1987, *Icarus*, **72**, 468

Appendix A

Table A.1. Datasets used in this study.

Observations	Date	N FP1	Lat. FP1(°N)	FOV FP1(°)	N FP4	Lat. FP4(°N)
CIRS_036TI_FIRNADCMP002_PRIME*	28 Dec. 2006	136	−89.1	12.6	684	−74.2
CIRS_036TI_FIRNADCMP003_PRIME*†	27 Dec. 2006	321	78.6	21.0	1620	74.2
CIRS_037TI_FIRNADCMP001_PRIME†	12 Jan. 2007	161	75.2	19.1	815	83.3
CIRS_037TI_FIRNADCMP002_PRIME	13 Jan. 2007	107	−70.3	20.6	540	−84.2
CIRS_038TI_FIRNADCMP001_PRIME†	28 Jan. 2007	254	86.3	16.7	1275	69.0
CIRS_040TI_FIRNADCMP001_PRIME*	09 Mar. 2007	159	−49.2	21.1	795	−61.2
CIRS_040TI_FIRNADCMP002_PRIME*†	10 Mar. 2007	109	88.8	13.3	545	69.0
CIRS_041TI_FIRNADCMP002_PRIME*	26 Mar. 2007	102	61.2	19.3	525	47.9
CIRS_042TI_FIRNADCMP002_PRIME*	11 Apr. 2007	272	71.5	22.6	1362	50.6
CIRS_043TI_FIRNADCMP002_PRIME*†	27 Apr. 2007	104	77.1	20.0	535	55.0
CIRS_044TI_FIRNADCMP002_PRIME*	13 May 2007	104	−0.5	18.8	524	−17.3
CIRS_045TI_FIRNADCMP002_PRIME*	29 May 2007	346	52.4	29.5	1735	30.0
CIRS_046TI_FIRNADCMP002_PRIME	14 Jun. 2007	102	−20.8	19.0	510	−38.3
CIRS_052TI_FIRNADCMP002_PRIME*	19 Nov. 2007	272	40.3	26.5	1365	19.3
CIRS_053TI_FIRNADCMP001_PRIME*	04 Dec. 2007	223	−40.2	25.8	1119	−49.8
CIRS_055TI_FIRNADCMP001_PRIME	05 Jan. 2008	190	18.7	30.5	960	5.6
CIRS_055TI_FIRNADCMP002_PRIME	06 Jan. 2008	284	44.6	22.2	1420	39.9
CIRS_069TI_FIRNADCMP002_PRIME*	28 May 2008	112	9.5	19.3	565	−9.2
CIRS_107TI_FIRNADCMP002_PRIME	27 Mar. 2009	164	33.5	30.4	821	50.1
CIRS_110TI_FIRNADCMP001_PRIME	06 May 2009	282	−68.1	25.7	1410	−59.4
CIRS_111TI_FIRNADCMP002_PRIME	22 May 2009	168	−27.1	23.1	842	−21.6
CIRS_112TI_FIRNADCMP001_PRIME	06 Jun. 2009	218	48.7	21.0	1090	59.0
CIRS_112TI_FIRNADCMP002_PRIME	07 Jun. 2009	274	−58.9	20.2	1370	−39.9
CIRS_160TI_FIRNADCMP002_PRIME	30 Jan. 2012	280	−0.2	18.3	1474	6.9
CIRS_172TI_FIRNADCMP001_PRIME	26 Sep. 2012	282	44.9	18.5	1410	50.9
CIRS_172TI_FIRNADCMP002_PRIME†	26 Sep. 2012	270	−70.4	23.2	1352	−70.8
CIRS_174TI_FIRNADCMP002_PRIME	13 Nov. 2012	298	−71.8	21.8	1493	−52.9
CIRS_194TI_FIRNADCMP001_PRIME	10 Jul. 2013	186	30.0	19.7	935	46.1
CIRS_197TI_FIRNADCMP001_PRIME	11 Sep. 2013	330	60.5	19.4	1650	64.0
CIRS_198TI_FIRNADCMP001_PRIME	13 Oct. 2013	187	88.9	8.7	935	72.9
CIRS_198TI_FIRNADCMP002_PRIME†	14 Oct. 2013	306	−69.8	24.0	1530	−85.8
CIRS_199TI_FIRNADCMP001_PRIME	30 Nov. 2013	329	68.4	23.9	1650	85.5
CIRS_200TI_FIRNADCMP001_PRIME	01 Jan. 2014	187	49.9	19.6	935	37.2
CIRS_201TI_FIRNADCMP001_PRIME	02 Feb. 2014	329	19.9	26.8	1649	27.6
CIRS_203TI_FIRNADCMP001_PRIME	07 Apr. 2014	187	75.0	18.0	935	67.7
CIRS_207TI_FIRNADCMP001_PRIME†	20 Aug. 2014	179	−70.0	17.8	895	−79.4
CIRS_207TI_FIRNADCMP002_PRIME	21 Aug. 2014	39	79.8	16.1	195	78.1
CIRS_208TI_FIRNADCMP002_PRIME	22 Sep. 2014	175	60.5	17.8	875	75.6
CIRS_210TI_FIRNADCMP001_PRIME†	10 Dec. 2014	329	−70.3	25.5	1646	−50.5
CIRS_218TI_FIRNADCMP001_PRIME	06 Jul. 2015	249	−20.0	19.9	1250	−2.9
CIRS_222TI_FIRNADCMP002_PRIME	29 Sep. 2015	233	−0.1	18.6	530	18.3
CIRS_232TI_FIRNADCMP001_PRIME	16 Feb. 2016	249	−50.2	24.5	1245	−31.0
CIRS_235TI_FIRNADCMP001_PRIME†	06 May 2016	163	−60.0	19.7	820	−45.1
CIRS_236TI_FIRNADCMP001_PRIME †	07 Jun. 2016	88	−70.0	15.8	440	−53.2
CIRS_236TI_FIRNADCMP002_PRIME	07 Jun. 2016	238	60.0	19.8	1193	78.7

Notes. N FP1 and N FP4 respectively stand for the number of spectra measured with FP1 and FP4 during the acquisition. FOV is the field of view. The asterisk denotes the datasets which have already been presented in [Teanby et al. \(2009a\)](#). The symbol † denotes datasets for which we perform the retrievals using small domains around the spectral bands of C₄H₂, C₂N₂, and C₃H₄, as described in Sect. 3.4.