



HAL
open science

Combination of supervised learning and unsupervised learning based on object association for land cover classification

Na Li, Arnaud Martin, Rémi Estival

► **To cite this version:**

Na Li, Arnaud Martin, Rémi Estival. Combination of supervised learning and unsupervised learning based on object association for land cover classification. DICTA2018, Dec 2018, Canberra, Australia. hal-01922096

HAL Id: hal-01922096

<https://hal.science/hal-01922096v1>

Submitted on 14 Nov 2018

HAL is a multi-disciplinary open access archive for the deposit and dissemination of scientific research documents, whether they are published or not. The documents may come from teaching and research institutions in France or abroad, or from public or private research centers.

L'archive ouverte pluridisciplinaire **HAL**, est destinée au dépôt et à la diffusion de documents scientifiques de niveau recherche, publiés ou non, émanant des établissements d'enseignement et de recherche français ou étrangers, des laboratoires publics ou privés.

Combination of supervised learning and unsupervised learning based on object association for land cover classification

Na Li

IRISA - University of Rennes 1 - Total
France
Email: li.na@irisa.fr

Arnaud Martin

IRISA - University of Rennes 1
France
Email: arnaud.martin@irisa.fr

Rémi Estival

Total, Innovative acquisition
France
Email: remi.estival@total.com

Abstract—Conventional supervised classification approaches have significant limitations in the land cover classification from remote sensing data because a large amount of high quality labeled samples are difficult to guarantee. To overcome this limitation, combination with unsupervised approach is considered as one promising candidate. In this paper, we propose a novel framework to achieve the combination through object association based on Dempster-Shafer theory. Inspired by object association, the framework can label the unsupervised clusters according to the supervised classes even though they have different numbers. The proposed framework has been tested on the different combinations of commonly used supervised and unsupervised methods. Compared with the supervise methods, our proposed framework can furthest enhance the overall accuracy approximately by 8.2%. The experiment results proved that our proposed framework has achieved twofold performance gain: better performance on the insufficient training data case and the possibility to apply on a large area.

Index Terms—Object association, land cover classification, combination of supervised learning and unsupervised learning.

I. INTRODUCTION

As an essential mid-step for environment monitoring and change detection, the generation of thematic land cover maps through remote sensing data has been considered as one of the most important applications of remote sensing. Many studies on classification methods have been carried out to produce a reliable thematic land cover map.

Supervised learning provides thematic land cover maps with high accuracy thanks to the prior knowledge used in the training process. The prior information utilized in supervised learning can be either derieved in pixel level [1], [2] or object level [3], [4], [5]. Numerous supervised classification algorithms have been developed, many of which yield very promising results. Maximum Likelihood Classification (MLC) is the most commonly used supervised classification, which assumes that training data are normally distributed. It renders satisfying performance in many studies [6], [7]. MLC has been proved robust for remote sensing images, as long as the data meets the distribution assumption (*e.g.* a Gaussian distribution) [8]. Even though an appropriate classification methodology and proper data sets are employed to generate land cover maps, supervised approaches usually require a large

amount of high quality reference data for training process. However, it is not always possible to collect ground truth especially for a large or inaccessible area.

Unsupervised learning is another important group of methods applied on land cover classification [9]. The most highlight advantage is that it can automatically convert raw image data into distinguished clusters without prior ground knowledge. K-means and Iterative Self-Organizing Data Analysis Technique Algorithm (ISODATA) are the most commonly used unsupervised approaches in remote sensing thanks to their promising performance in many studies [10], [11]. However, even though unsupervised approaches are more appropriate for large and inaccessible areas, they can not directly produce thematic land cover maps; therefore time-consuming manually labeling process is always required. Due to the lack of prior ground information, unsupervised learning is usually less accurate than supervised learning [12].

As both supervised and unsupervised methods have their pros and cons, it is thus necessary to consider to combine them together for better results. Although many studies have been carried out to achieve the combination, most of them focus on hierarchical structures which makes supervised learning and unsupervised learning dependent [13]. This kind of combination is less robust as the mistakes from the former classifier may be hard to reduce by the latter especially when it is unsupervised. Many combinations have been also developed in feature level [14] to generate more representative feature spaces or hyper planes; therefore it is difficult to measure uncertainties of the results from each individual classifier.

The combination in the decision level of independent supervised and unsupervised classifiers is still a big challenge. In [15], the authors applied Dempster-Shafer theory to achieve this combination, considering supervised learning and unsupervised learning as independent sources, through which the uncertainty and the imprecision in the fusion can be measured. However, currently existing methods do not focus on the conflict situation where the number of supervised classes is not the same as the number of unsupervised clusters.

Therefore, in this paper, we proposed a novel framework using object association based on Dempster-Shafer theory to

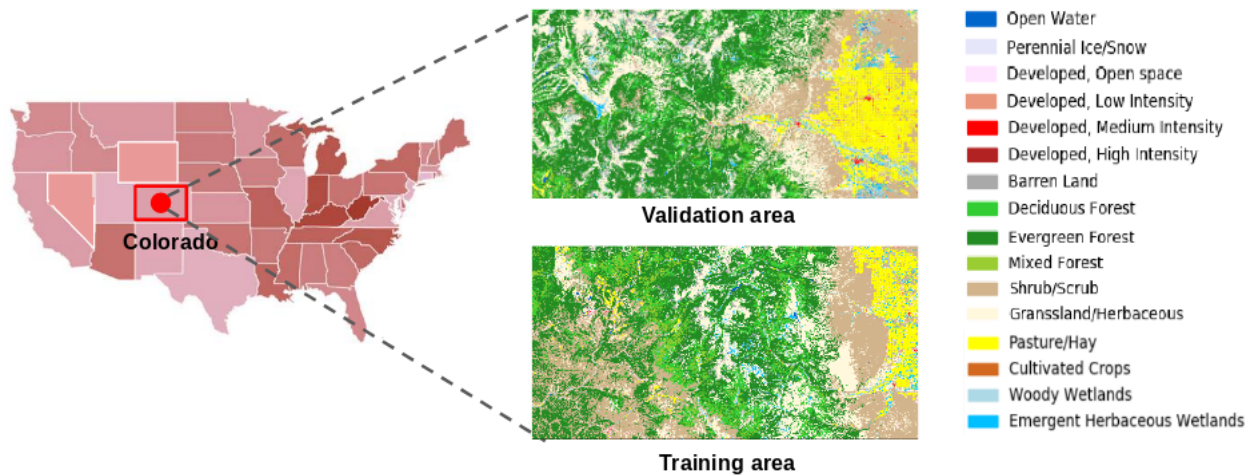


Fig. 1: Map of the study area

combine supervised learning and unsupervised learning when the number of classes and the number of clusters are different. Furthermore, this framework can be applied to improve the accuracy of supervised learning when training data are severely insufficient.

This paper is organized as follows: In section II, we introduce the study area and data set, followed by some bases of Dempster-Shafer theory in section III. Object association problem is explained in section IV. Section V presents the proposed framework in details. Then, section VI illustrates results of our experiments. Conclusions are drawn in section VII.

II. STUDY AREA AND DATA SETS

A. Study area

The area of study located in Colorado in United States, lies within latitudes $38^{\circ}30'53.44''N$ - $36^{\circ}22'23.05''N$ and longitudes $108^{\circ}0'10.24''W$ - $105^{\circ}18'35.60''W$. It is contained San Juan National Forest and Rio Grande National Forest, as shown in Fig.1. The two national forest parks are mainly composed of deciduous forest, evergreen forest, mix forest. The remaining natural vegetation still occurs as shrub, grassland and herbaceous. A large area of pasture is also contained near Monte Vista. This selected area contains two national forest parks as well as various developed areas thus can be used to mimic the complex environment with a wide range of land covers. We separate the study area into two subareas of equal size: validation area and training area.

B. Satellite

The satellite used in this study is LandSat-8 OLI consisting of eight spectral bands with a spatial resolution of 30 meters, a panchromatic band with a resolution of 15 meters and two thermal bands with a resolution of 100 meters. The image acquired on the 11 June 2018 was obtained from USGS Earth Explorer [16]. Geometric correction of the image has already done through UTM map projection by NASA. The bands used for our study include band 1-7 which are all spectral bands.

C. Training and validation data

Training and validation data applied in our study was obtained from National Land Cover Database 2011 (NLCD 2011) [17], which was created by the Multi-Resolution Land Characteristics (MRLC) Consortium. NLCD 2011 has 16-class land cover classification scheme that has been applied consistently across the United States at a spatial resolution of 30 meters. The code of the land cover classification scheme of NLCD 2011 is shown in Table I.

TABLE I: Land cover classification scheme of NLCD 2011

Code	Legend	Code	Legend
11	Open Water	42	Evergreen Forest
12	Perennial Ice/Snow	43	Mixed Forest
21	Developed, Open Space	52	Shrub/Scrub
22	Developed, Low Intensity	71	Grassland/Herbaceous
23	Developed, Medium Intensity	81	Pasture/Hay
24	Developed, High Intensity	82	Clutivated Crops
31	Barren Land (Rock/Sand/Clay)	90	Woody Wetlands
41	Deciduous Forest	95	Emergent Herbaceous Wetlands

In our study, we select half of the study area as the training area which includes all 16 types of land covers mentioned in Table I with the size of 2000×4000 pixels to generate training samples, as shown in Fig. 1. The other half of the study area with the same size is chosen as validation area as shown in Fig. 1. To simulate the situation where training samples are insufficient for supervised classifier, only a small amount of pixels per class are randomly selected as training samples, which will be explained in details in section VI

III. DEMPSTER-SHAFER THEORY

As a generalization of traditional probability, Dempster-Shafer theory [18], [19] allows to distribute support to not only a single proposition itself but also to the union of propositions. One of the greatest advantages of Dempster-Shafer theory is that it allows to take into consideration uncertainty and

imprecision at the same time via two functions: belief and plausibility, derived from mass function. The mass function is defined on all the subsets of the frame of discernment $\Omega = \{\omega_1, \dots, \omega_n\}$, and assigns belief degree to all the elements in the power set of discernment, noted as 2^Ω .

The sum of the masses of all the propositions is one:

$$\sum_{A \subseteq \Omega} m(A) = 1 \quad (1)$$

On the contrary, the mass function of the null proposition \emptyset is usually set to zero but it is also possible to be a positive value. $m(\emptyset) = 0$ refers to a closed world hypothesis, in which the discernment Ω contains all the possible situations in reality. If $m(\emptyset)$ is superior to 0, this corresponds to an open world hypothesis, where unknown situation outside of Ω can be considered. $m(A)$ can be considered as a degree of evidence supporting the claim that a specific element of Ω belongs to the set A , yet not to any subset of A [20].

IV. OBJECT ASSOCIATION

Object association was originally derived from tracking problem to estimate the status of mobile objects detected by multiple sensors. Mathematically speaking, object association refers to match two finite set of objects $E = \{e_1, \dots, e_n\}$ and $F = \{f_1, \dots, f_p\}$ with possibly different combinations. It is usually assumed that each object in one set should be matched with at most one object in the other set. An object is possible to disappear between two successive time frames, which leads to no correspondent counterpart for this object in the other set.

The problem could be considered in the framework of Dempster-Shafer theory, also referred as Belief function. Therefore, a piece of evidence presenting the possible association of two objects e_i and f_j can be modeled by a mass function m_{ij} on the discernment $\Theta_{ij} = \{0, 1\}$. Let R_{ij} represent the relation between the object e_i and f_j . The mass function $m_{ij}(\{1\})$ refers to the probability of $R_{ij} = 1$, $m_{ij}(\{0\})$ is the probability $R_{ij} = 0$ and $m_{ij}(\{0, 1\})$ is the probability of knowing nothing about the relation R_{ij} .

Several solutions about choosing the best relation R^* based on pairwise mass functions m_{ij} have been proposed. In [25], the authors combines the mass function m_{ij} for each i and then find the best relation R^* through maximum pignistic probability. In [26], the problem is transferred into an equivalent linear assignment problem and then searches for the most plausible relation as the best one, which thus can be solved in polynomial time. Since the number of classes and clusters is large in our study, we applied the approach proposed in [26] on the combination of supervised learning and unsupervised learning. It can be stated as the following inter linear program:

$$\max \left(\sum_{i=1}^n \sum_{j=1}^p \omega_{ij} R_{ij} \right) \quad (2)$$

subject to

$$\sum_{j=1}^p R_{ij} \leq 1 \quad \forall i \in \{1, \dots, n\} \quad (3)$$

$$\sum_{i=1}^n R_{ij} \leq 1 \quad \forall j \in \{1, \dots, p\} \quad (4)$$

$$R_{ij} \in \{0, 1\} \quad \forall i \in \{1, \dots, n\}, \forall j \in \{1, \dots, p\} \quad (5)$$

in which w_{ij} is a coefficient generated by m_{ij} presenting the uncertainty as well as imprecision on the evidence of relation between e_i and f_j .

V. THE PROPOSED FRAMEWORK

A. Combination of supervised learning and unsupervised learning

Let us denote S as the set of classes generated from supervised learning and C as the set of clusters derived from unsupervised learning. Based on the principle of object association, we have to match elements from two sets of objects $S = \{s_1, \dots, s_n\}$ and $C = \{c_1, \dots, c_p\}$ with the most possible combination.

As explained in Section IV, mass function m_{ij} with $1 \leq i \leq n$, $1 \leq j \leq p$, indicates all available evidences about the association between S and C . Each m_{ij} encodes a piece of evidence about a binary variable R_{ij} . This variable indicates s_i is the same type as c_j when it equals to 1, and 0 otherwise. Each m_{ij} is thus on the discernment $\Theta = \{0, 1\}$ having:

$$m_{ij}(\{1\}) = \alpha_{ij} \quad (6)$$

$$m_{ij}(\{0\}) = \beta_{ij} \quad (7)$$

$$m_{ij}(\{0, 1\}) = 1 - \alpha_{ij} - \beta_{ij} \quad (8)$$

where α_{ij} and β_{ij} is measured based on the similarity between a class s_i and a cluster c_j .

We assumed that $n < p$ because the number of class, a kind of prior knowledge, can be consider as the lower bound of the number of cluster which is an unknown variable in real situation. Hence, a cluster c_j is usually smaller than a class s_i . To measure the similarity between s_i and c_j , we consider the percentage of pixels in c_j is labeled as s_i . We thus use the ratio of pixels in intersection of s_i in c_j to pixels in c_j as the similarity δ_{ij} , shown as follows:

$$\delta_{ij} = \frac{|s_i \cap c_j|}{|c_j|} \quad (9)$$

For α_{ij} and β_{ij} , we have:

$$\alpha_{ij} = \gamma \delta_{ij} \quad (10)$$

$$\beta_{ij} = \gamma(1 - \delta_{ij}) \quad (11)$$

in which γ represents a discounting coefficient ranging from 0 to 1 to measure the reliability of classifiers.

To assign label of classes to clusters, we consider the following linear optimization problem:

$$\max_R \left(\sum_{i,j} \omega_{ij} R_{ij} \right) \quad (12)$$

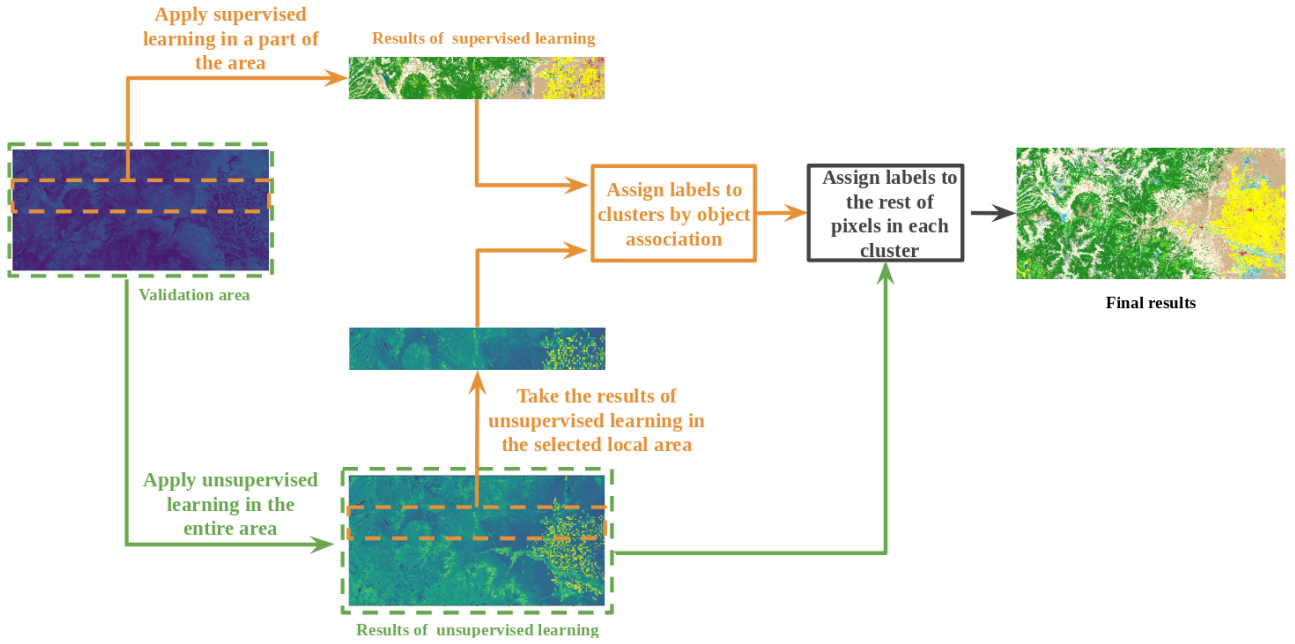


Fig. 2: The proposed framework.

subject to

$$\sum_{j=1}^p R_{ij} \geq 1 \quad \forall i \in \{1, \dots, n\} \quad (13)$$

$$\sum_{i=1}^n R_{ij} = 1 \quad \forall j \in \{1, \dots, p\} \quad (14)$$

$$R_{ij} \in \{0, 1\} \quad \forall i \in \{1, \dots, n\}, \forall j \in \{1, \dots, p\} \quad (15)$$

with

$$\omega_{ij} = \ln \frac{1 - \beta_{ij}}{1 - \alpha_{ij}} \quad (16)$$

The most plausible relation R^* , which indicates assignments between classes and clusters, can thus be found by solving the above optimization problem.

Unlike to classical object association problem where each object in one set has at most one counterpart in the other set, in our problem, each class s_i can be assigned to multiple clusters while each cluster c_j is merely matched with one class as we always have $n < p$.

B. Generation of land cover map for a large area

The proposed framework can produce a thematic land cover map on a large area merely by deploying a supervised approach on a small slice of the validation region. We select a slice of area containing all types of land covers to employ a supervised learning approach. On the contrary, unsupervised learning approach is applied on the whole area. The principal ideal behind the proposed framework is to assign the most plausible label to each clusters in the same area where thematic labels are offered by the supervised approach; later we can enlarge these labeled clusters to the whole area.

The main steps of the proposed framework is shown in Fig 2, in which the region marked with orange rectangular denoted as A is the selected slice for conducting supervised learning approach. The set of classes produced by the supervised approach deployed on the region A is denoted as:

$$S^A = \{s_1^A, \dots, s_n^A\} \quad (17)$$

The set of clusters from the unsupervised learning on the entire validation area is denoted as:

$$C = \{c_1, \dots, c_p\} \quad (18)$$

The set of clusters in the region A denoted as C^A is defined as:

$$C^A = \{c_i^A | c_i^A = c_i \cap S^A\} \quad (19)$$

The object association is firstly applied between the set S^A and the set C^A ; therefore clusters in C^A can be all assigned by a thematic label from the supervised approach. To enlarge thematic labels to the whole area representing by the set of clusters C , we assign each cluster c_i with the same label as its subset c_i^A shown as follows:

$$L(c_i) = L(c_i^A) \quad (20)$$

where $L(x)$ represents the final thematic label of object x .

VI. EXPERIMENT RESULTS AND DISCUSSION

In this section, we tested the proposed framework with different combinations of supervised learning and unsupervised learning. To verify the possibility to apply the proposed framework on a large area, we only carried out supervised learning on a quarter of the validation area. Based on the labels it generates, a thematic land cover map of the entire

TABLE II: Comparison of MLC and MLC + ISODATA in classification accuracy.

Number of clusters	Accuracy of each land cover category															Overall accuracy	
	11	12	21	22	23	24	31	41	42	43	52	71	81	82	90		95
20	0.316	0.051	0.078	0.077	0.133	0.019	0.064	0.212	0.494	0.464	0.352	0.205	0.255	0.142	0.116	0.199	0.325
40	0.590	0.031	0.041	0.057	0.064	0.008	0.034	0.189	0.672	0.574	0.571	0.452	0.257	0.163	0.047	0.235	0.475
60	0.541	0.001	0.026	0.079	0.044	0.034	0.037	0.179	0.694	0.572	0.634	0.451	0.306	0.075	0.039	0.267	0.496
80	0.463	0.043	0.027	0.063	0.025	0.022	0.059	0.198	0.711	0.521	0.684	0.429	0.308	0.071	0.027	0.294	0.505
100	0.579	0.026	0.019	0.069	0.033	0.032	0.046	0.206	0.698	0.606	0.676	0.479	0.313	0.048	0.014	0.339	0.514
200	0.746	0.006	0.027	0.088	0.098	0.012	0.079	0.164	0.682	0.595	0.659	0.453	0.319	0.065	0.040	0.347	0.501
300	0.697	0.019	0.020	0.088	0.077	0.022	0.0941	0.232	0.684	0.580	0.672	0.441	0.318	0.057	0.046	0.363	0.504
400	0.689	0.005	0.021	0.092	0.115	0.0115	0.084	0.219	0.678	0.600	0.657	0.441	0.324	0.091	0.047	0.352	0.500
500	0.739	0.012	0.035	0.110	0.106	0.057	0.101	0.239	0.664	0.551	0.624	0.469	0.307	0.119	0.062	0.367	0.497
MLC	0.771	0.064	0.065	0.109	0.375	0.294	0.591	0.231	0.572	0.764	0.449	0.377	0.278	0.262	0.180	0.327	0.432

TABLE III: Overall accuracy of MLC and MLC+ISODATA with different size of training samples.

Percentage in the training area	0.05%	0.1%	0.2%	0.4%	0.8%	1.2%	1.6%	2.0%	2.4%	5.0%	10.0%	20.0%	40.0%	80.0%	100.0%
MLC	0.418	0.437	0.446	0.447	0.451	0.453	0.456	0.457	0.456	0.460	0.470	0.484	0.499	0.528	0.539
MLC+ISODATA	0.475	0.504	0.513	0.510	0.505	0.508	0.507	0.509	0.509	0.511	0.514	0.518	0.529	0.554	0.562

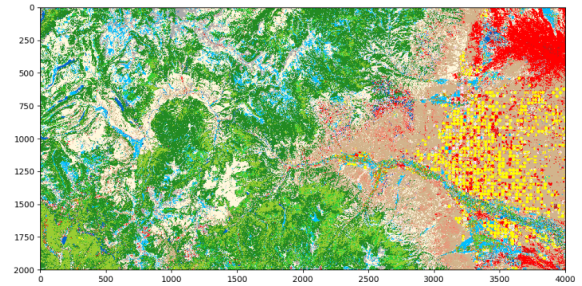
validation area can be produced by the proposed framework, as illustrated in Fig. 2. We also applied supervised learning on the entire validation area to compared with the results from the proposed framework.

Apart from the experiments on different combination of methods, we also conducted the proposed framework with different size of training data and made the comparison with supervised learning. We repeated all the experiments in our study 10 times to take their average results.

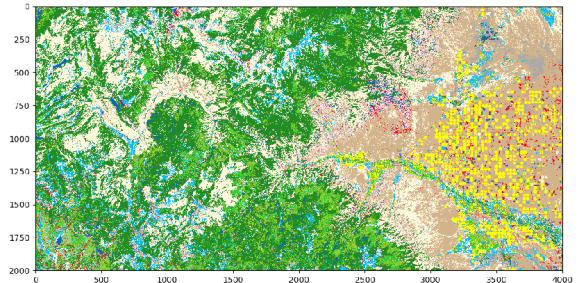
A. Combination of MLC and ISODATA

We have first used the combination of MLC and ISODATA in the proposed framework with the number of clusters ranging from 20 to 500. To mimic the situation where training samples are severely insufficient, we first selected a very small amount of training samples to train MLC. Table II summarizes the comparison between the proposed framework and MLC on the validation area with training samples accounting for 0.2% in the training area. The overall accuracy and the accuracy of each land cover category in Table II were measured by confusion matrix. Due to the limitation of space, we have employed the code of NLCD classification mentioned in Table I to represent each land cover category and marked the best accuracy in bold. The overall accuracy of the proposed framework improves as the number of clusters k increasing and the best performance is reached when $k = 100$.

We displayed the results of MLC shown in Fig. 3a to compare with the best thematic land cover map generated through the combination of MLC and ISODATA, as shown in Fig. 3b. MLC apparently misclassified a part of shrub as medium intensity developed area. However, after the combination with ISODATA in the proposed framework, the best



(a) Results of MLC.



(b) Results of MLC + ISODATA when k=100.

Fig. 3: Thematic land cover maps

accuracy of shrub is enhanced to 0.684%. This improvement is presented by the reduction of the red area in Fig. 3b.

Besides shrub, other terrestrial vegetation such as deciduous forest, evergreen forest and grassland also have good improvements of classification accuracy after the combination. However, some land cover categories such as developed areas, barren land and emergent herbaceous wetlands, shows unsatisfying classification accuracy, which are also difficult to

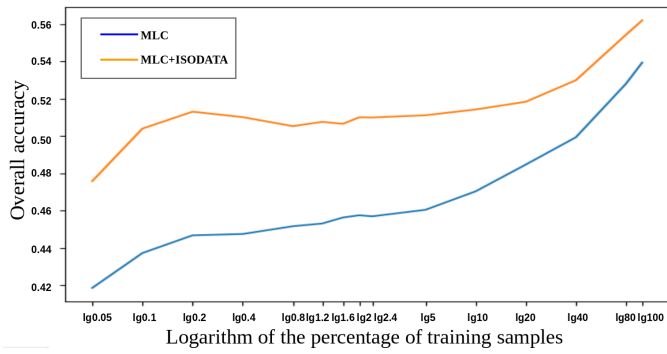


Fig. 4: Accuracy with different size of training samples.

enhance in the proposed framework.

We also tested the proposed framework and MLC with the different quantities of training samples fixing $k = 100$. We started the test on the severely insufficient training samples which only represent 0.05% of the training area. Table. III reports the overall accuracy of MLC and the proposed framework with the combination of MLC and ISODATA on the validation area. Fig. 4. gives a more apparent display of the enhancement of their accuracies with the increasing of training samples. The proposed framework always performs better than MLC when the percentage of training samples ranging from 0.05% to 100% and the largest enhancement of accuracy occurs at 0.2%.

B. Combination of SVM and ISODATA

A combination of Support Vector Machine (SVM) and ISODATA was also considered in the proposed framework. In our study, we selected Radial Basis Function (RBF) kernel as it is proved to have better results for Landsat data with 7 bands [27]. The error weight and Gamma value in SVM were set separately to 100 and 0.167 as is proposed in [28].

Table IV reports the overall accuracy as well as the accuracy of each individual land cover category when training samples account for 0.2%. The performance of SVM on the entire validation area is also displayed at the bottom of the Table IV to make the comparison. The number of clusters k ranged from 20 to 500 with the best performance of each land cover category marked in bold. For this combination, the best overall accuracy is reach when k is 60 and the correspondent results are shown in Fig. 5a and Fig. 5b.

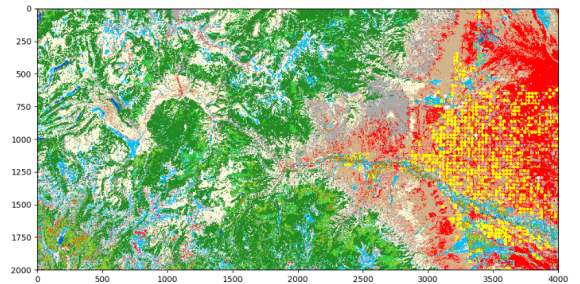
Compared with MLC, SVM is obviously less competitive to distinguish shrub and medium intensity developed area when training data is severely insufficient. This kind of combination has a good improvement of the accuracy of shrub and grassland. However, the enhancement of overall accuracy from 0.441 to 0.467 is less apparent than the combination of MLC and ISODATA.

Another experiment to exterminate the performance of the proposed framework with different size of training data was also conducted. The number of clusters k in ISODATA is fixed at 60 at which this combination achieves the best performance in the previous experiment. The results are summarized in

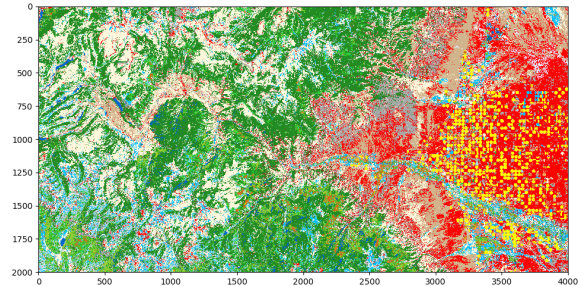
Table V and Fig. 6. The overall accuracy is improved when percentage of training data is from 0.05% to 0.8%, which is less satisfying than the combination of MLC and ISODATA.

C. Discussion

We applied two combinations in the proposed framework: MLC with ISODATA, and SVM with ISODATA. For the experiments with different number of clusters k , we all started when k is 20, which is approximate to the number of classes set by MLC and SVM. However, the two combinations are both less accurate than MLC or SVM in this situation because of the limitation of unsupervised learning. As a clustering method, ISODATA separates data merely based on their spectral dissimilarities in the seven optical bands used in the study. In the complex natural environment, however, different types of land cover may have similar spectral properties and the same type may reflects differently in spectral bands due to varieties of temperature and illumination. A direct application of ISODATA on our study data is thus less satisfying. The proposed framework based on object association is to achieve the combination in the decision level. It can be considered as an average results of supervised learning and unsupervised learning when the number of clusters is approximate to the number of classes. Therefore, the combination of MLC and ISODATA or SVM and ISODATA is less accurate than the original supervised approach.



(a) Results of SVM.



(b) Results of SVM + ISODATA with $k=60$.

Fig. 5: Thematic land cover maps

However, when the number of clusters is largely superior to the number of classes, the overall accuracy is gradually promoted with the increment of k . For the combination of MLC and ISODATA, the overall accuracy achieves the optimal value at $k = 100$ and gradually converges when k is closing

TABLE IV: Comparison of SVM and SVM + ISODATA in classification accuracy

Number of clusters	Accuracy of each land cover category																Overall accuracy
	11	12	21	22	23	24	31	41	42	43	52	71	81	82	90	95	
20	0.010	0.070	0.202	0.104	0.245	0.001	0.219	0.285	0.569	0.436	0.193	0.126	0.263	0.161	0.202	0.232	0.321
40	0.014	0.011	0.056	0.046	0.562	0.007	0.274	0.243	0.661	0.270	0.126	0.584	0.268	0.149	0.112	0.084	0.445
60	0.737	0.032	0.006	0.097	0.437	0.001	0.320	0.411	0.629	0.003	0.503	0.424	0.344	0.029	0.045	0.214	0.467
80	0.756	0.187	0.026	0.092	0.491	0.006	0.351	0.406	0.668	0.373	0.335	0.427	0.278	0.073	0.058	0.328	0.457
100	0.772	0.027	0.041	0.124	0.565	0.008	0.383	0.336	0.670	0.227	0.223	0.464	0.312	0.053	0.092	0.287	0.450
200	0.739	0.025	0.015	0.153	0.545	0.001	0.339	0.342	0.665	0.262	0.214	0.447	0.347	0.014	0.149	0.299	0.448
300	0.739	0.008	0.015	0.153	0.545	0.001	0.339	0.342	0.665	0.262	0.214	0.447	0.346	0.014	0.149	0.299	0.443
400	0.681	0.010	0.033	0.169	0.649	0.002	0.368	0.331	0.684	0.401	0.232	0.422	0.331	0.113	0.125	0.312	0.450
500	0.716	0.014	0.013	0.207	0.541	0.001	0.410	0.318	0.668	0.404	0.258	0.423	0.338	0.094	0.146	0.335	0.451
SVM	0.765	0.058	0.057	0.202	0.686	0.106	0.503	0.313	0.683	0.522	0.202	0.439	0.321	0.209	0.158	0.359	0.441

TABLE V: Overall accuracy of SVM and SVM+ISODATA with different size of training samples.

Percentage in the training area	0.05%	0.1%	0.2%	0.4%	0.8%	1.2%	1.6%	2.0%	2.4%	5.0%	10.0%	20.0%	40.0%	80.0%	100.0%
SVM	0.381	0.428	0.442	0.461	0.464	0.490	0.493	0.493	0.492	0.525	0.571	0.604	0.676	0.709	0.713
SVM+ISODATA	0.392	0.423	0.468	0.470	0.472	0.485	0.483	0.477	0.482	0.516	0.556	0.586	0.658	0.681	0.679

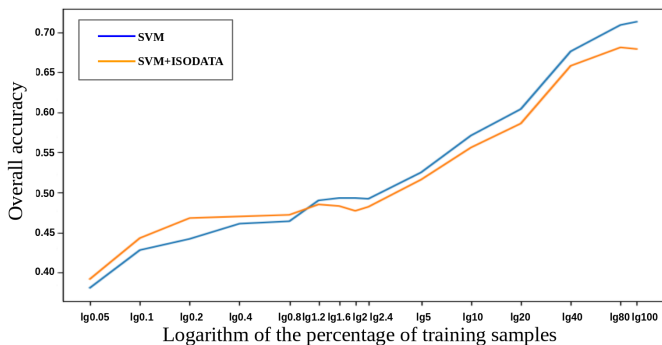


Fig. 6: Accuracy with different size of training samples

to 500. The combination of SVM and ISODATA reaches its best performance at $k = 60$. However, the increment of k after 60 doesn't render more enhancement of accuracy.

A relatively large value of k in ISODATA can separate original data into multiple homogeneous clusters which thus can be considered as over-segmentation or super pixels in spectral space. In this situation, pixels in each pure cluster are gathered as an entire object whose label is associated by the proposed framework. Compared to an individual supervised approach in pixel level, the proposed framework can generate the thematic land cover maps on object level; therefore, it has an evident improvement of the overall accuracy. With the increment of k , the combination of SVM and ISODATA is less efficient than MLC and ISODATA probably because the spectral properties of land covers in our study area are more distinguishable for MLC than SVM when training data is insufficient.

With the different size of training data, the combination of MLC and ISODATA always renders better performances

than MLC alone and this improvement of accuracy is most satisfying when the training samples account for 0.2% in the training area. However, for SVM and ISODATA, the enhancement of overall accuracy only occurs when training samples are from 0.1% to 0.8 possibly because SVM is hard to find appropriate hyper planes for classification through such limited training data. Therefore, this combination is less effective than the first one in our study area.

The uncertainty and imprecision are measured through mass functions in the object association. We applied the ratio of pixels in intersection of a class s_i in a cluster c_j to pixels in c_j as the similarity between a class and a cluster. The uncertainty thus reduces when the number of clusters increases, which explains why results become better with large k . However, when k becomes too large, the results are less competitive due to the loss of information in unsupervised learning.

VII. CONCLUSION

We proposed a novel framework to combine supervised learning and unsupervised especially focusing on the conflict situation where the number of classes is not the same as the number of clusters. It can thus be applied in large or inaccessible areas where not enough ground truth is available.

The combination conducted in the framework takes merely spectral information as consideration. Therefore, in our future work, we will concentrate on enlarging this framework to combine various formats of information such as contextual information and ancillary data in the decision level to generate more accurate thematic land cover maps. On the other hand, as uncertainty and imprecision take important roles in classification, the application of Dempster-Shafer theory in the fusion framework is also another promising aspect in our future work.

REFERENCES

- [1] B. R. Deilmai, B. B. Ahmad, and H. Zabihi, Comparison of two classification methods (mlc and svm) to extract land use and land cover in johor malaysia, *IOP Conference Series: Earth and Environmental Science*, vol. 20, no. 1, p. 012052, 2014.
- [2] JA. Taufik and S. S. S. Ahmad, Land cover classification of landsat 8 satellite data based on fuzzy logic approach, *IOP Conference Series: Earth and Environmental Science*, vol. 37, no. 1, p. 012062, 2016.
- [3] L. Ma, L. Cheng, M. Li, Y. Liu, and X. Ma, Training set size, scale, and features in geographic object-based image analysis of very high resolution unmanned aerial vehicle imagery, *ISPRS Journal of Photogrammetry and Remote Sensing*, vol. 102, pp. 14 - 27, 2015.
- [4] L. Ma, T. Fu, T. Blaschke, M. Li, D. Tiede, Z. Zhou, X. Ma, and D. Chen, Evaluation of feature selection methods for object-based land cover mapping of unmanned aerial vehicle imagery using random forest and support vector machine classifiers, *ISPRS International Journal of Geo- Information*, vol. 6, no. 2, 2017.
- [5] J. M. Pea-Barragn, M. K. Ngugi, R. E. Plant, and J. Six, Object-based crop identification using multiple vegetation indices, textural features and crop phenology, *Remote Sensing of Environment*, vol. 115, no. 6, pp. 1301 - 1316, 2011.
- [6] J. Sun, J. Yang, C. Zhang, W. Yun, and J. Qu, Automatic remotely sensed image classification in a grid environment based on the maximum likelihood method, *Mathematical and Computer Modelling*, vol. 58, no. 3, pp. 573 - 581, 2013, computer and Computing Technologies in Agriculture 2011 and Computer and Computing Technologies in Agriculture 2012.
- [7] P. S. Sisodia, V. Tiwari, and A. Kumar, Analysis of supervised maximum likelihood classification for remote sensing image, in *International Conference on Recent Advances and Innovations in Engineering (ICRAIE-2014)*, May 2014, pp. 1 - 4.
- [8] L. Wang, W. P. Sousa, P. Gong, and G. S. Biging, Comparison of ikonos and quickbird images for mapping mangrove species on the caribbean coast of panama, *Remote Sensing of Environment*, vol. 91, no. 3, pp. 432 - 440, 2004.
- [9] D. Wang and B. Cheng, An unsupervised classification method of remote sensing images based on ant colony optimization algorithm, in *Advanced Data Mining and Applications*, L. Cao, Y. Feng, and J. Zhong, Eds. Berlin, Heidelberg: Springer Berlin Heidelberg, 2010, pp. 294 - 301.
- [10] A. Abbas, N. Minallh, N. Ahmad, S. Abdur Rehman Abid, and M. Khan, K-means and isodata clustering algorithms for landcover classification using remote sensing, vol. 48, pp. 315 - 318, 04 2016.
- [11] B. Li, H. Zhao, and Z. Lv, Parallel isodata clustering of remote sensing images based on mapreduce, in *2010 International Conference on Cyber-Enabled Distributed Computing and Knowledge Discovery*, Oct 2010, pp. 380 - 383.
- [12] M. H. Ismail, H. Pakhriazad, and M. Shahrin, Evaluating supervised and unsupervised techniques for land cover mapping using remote sensing data, 01 2009.
- [13] U. Markowska-Kaczmar and T. Switek, Combined unsupervised-supervised classification method, in *Knowledge-Based and Intelligent Information and Engineering Systems*, J. D. Velasquez, S. A. Ros, R. J. Howlett, and L. C. Jain, Eds. Berlin, Heidelberg: Springer Berlin Heidelberg, 2009, pp. 861 - 868.
- [14] I. Castelli and E. Trentin, Combination of supervised and unsupervised learning for training the activation functions of neural networks, *Pattern Recogn. Lett.*, vol. 37, pp. 178 - 191, Feb. 2014.
- [15] F. Karem, M. Dhibi, and A. Martin, Combination of supervised and unsupervised classification using the theory of belief functions, in *Belief Functions: Theory and Applications*, T. Denoeux and M.-H. Masson, Eds. Berlin, Heidelberg: Springer Berlin Heidelberg, 2012, pp. 85 - 92.
- [16] USGS, <https://earthexplorer.usgs.gov/>
- [17] C. Homer, J. Dewitz, L. Yang, S. Jin, P. Danielson, G. Xian, J. Coulston, N. Herold, J. Wickham, and K. Megown, Completion of the 2011 national land cover database for the conterminous united states - representing a decade of land cover change information, vol. 81, pp. 346 - 354, 05 2015.
- [18] A. P. Dempster, Upper and lower probabilities induced by a multivalued mapping, *Ann. Math. Statist.*, vol. 38, no. 2, pp. 325 - 339, 04 1967.
- [19] G. Shafer, *A Mathematical Theory of Evidence*. Princeton: Princeton University Press, 1976.
- [20] G. J. Klir and T. A. Folger, *Fuzzy Sets, Uncertainty, and Information*. Upper Saddle River, NJ, USA: Prentice-Hall, Inc., 1987.
- [21] T. Denoeux, Reasoning with imprecise belief structures, *International Journal of Approximate Reasoning*, vol. 20, no. 1, pp. 79 - 111, 1999.
- [22] P. Smets, The transferable belief model, *Artif. Intell.*, vol. 66, no. 2, pp. 191 - 234, Apr. 1994.
- [23] T. Denoeux, The cautious rule of combination for belief functions and some extensions, in *2006 9th International Conference on Information Fusion*, July 2006, pp. 1 - 8.
- [24] P. Smets, Constructing the pignistic probability function in a context of uncertainty, in *Proceedings of the Fifth Annual Conference on Uncertainty in Artificial Intelligence*, ser. UAI 89. Amsterdam, The Netherlands, The Netherlands: North- Holland Publishing Co., 1990, pp. 29 - 40.
- [25] D. Mercier, ric Lefvre, and D. Jolly, Object association with belief functions, an application with vehicles, *Information Sciences*, vol. 181, no. 24, pp. 5485 - 5500, 2011.
- [26] T. Denoeux, N. E. Zoghby, V. Cherfaoui, and A. Jouglet, Optimal object association in the Dempster-Shafer framework, *IEEE Transactions on Cybernetics*, vol. 44, no. 12, pp. 2521 - 2531, Dec 2014.
- [27] C. Huang, L. S. Davis, and J. R. G. Townshend, An assessment of support vector machines for land cover classification, *International Journal of Remote Sensing*, vol. 23, no. 4, pp. 725 - 749, 2002.
- [28] X. Yang, Parameterizing support vector machines for land cover classification, vol. 77, pp. 27 - 37, 01 2011.