



**HAL**  
open science

## **Elastin molecular aging promotes MDA-MB-231 breast cancer cell invasiveness**

Stéphanie Salesse, Ludivine Odoul, Lise Chazée, Christian Garbar, Laurent Duca, Laurent Martiny, Rachid Mahmoudi, Laurent Debelle

► **To cite this version:**

Stéphanie Salesse, Ludivine Odoul, Lise Chazée, Christian Garbar, Laurent Duca, et al.. Elastin molecular aging promotes MDA-MB-231 breast cancer cell invasiveness. *FEBS Open Bio*, 2018, 8 (9), pp.1395-1404. 10.1002/2211-5463.12455 . hal-01919053

**HAL Id: hal-01919053**

**<https://hal.science/hal-01919053>**

Submitted on 12 Nov 2018

**HAL** is a multi-disciplinary open access archive for the deposit and dissemination of scientific research documents, whether they are published or not. The documents may come from teaching and research institutions in France or abroad, or from public or private research centers.

L'archive ouverte pluridisciplinaire **HAL**, est destinée au dépôt et à la diffusion de documents scientifiques de niveau recherche, publiés ou non, émanant des établissements d'enseignement et de recherche français ou étrangers, des laboratoires publics ou privés.

# Elastin molecular aging promotes MDA-MB-231 breast cancer cell invasiveness

Stéphanie Salesse<sup>1,†</sup>, Ludivine Odoul<sup>1,†</sup>, Lise Chazée<sup>1</sup>, Christian Garbar<sup>2,3</sup>, Laurent Duca<sup>1</sup>, Laurent Martiny<sup>1</sup>, Rachid Mahmoudi<sup>4,5</sup> and Laurent Debelle<sup>1</sup>

1 UMR CNRS/URCA 7369, SFR CAP Santé, Faculty of Sciences, University of Reims Champagne-Ardenne, France

2 Biopathology Department, Institut Jean Godinot-Unicancer, Reims, France

3 DERM-I-C EA7319, Université de Reims Champagne Ardenne, France

4 Faculty of Medicine, EA3797, University of Reims Champagne-Ardenne, France

5 Department of Geriatrics and Internal Medicine, Maison Blanche Hospital, Reims University Hospitals, France

## Keywords

aging; elastin-derived peptides; invasiveness; matrix metalloprotease-14; MDA-MB-231 breast cancer cells

## Correspondence

L. Debelle, UMR CNRS/URCA 7369, UFR Sciences Exactes et Naturelles, Université de Reims Champagne Ardenne, Moulin de la Housse, BP 1039, 51687 Reims, France  
Fax: +33 326 918 366  
Tel: +33 326 913 502  
E-mail: laurent.debelle@univ-reims.fr

†These authors contributed equally to this work

(Received 4 January 2018, revised 30 March 2018, accepted 15 May 2018)

doi:10.1002/2211-5463.12455

Elastin is a long-lived extracellular matrix protein responsible for the structural integrity and function of tissues. Breast cancer elastosis is a complex phenomenon resulting in both the deposition of elastotic masses and the local production of elastin fragments. In invasive human breast cancers, an increase in elastosis is correlated with severity of the disease and age of the patient. Elastin-derived peptides (EDPs) are a hallmark of aging and are matrikines – matrix fragments having the ability to regulate cell physiology. They are known to promote processes linked to tumor progression, but their effects on breast cancer cells remain unexplored. Our data show that EDPs enhance the invasiveness of MDA-MB-231 breast cancer cells through the engagement of matrix metalloproteases 14 and 2. We therefore suggest that elastosis and/or an aged stroma could promote breast cancer cell invasiveness.

Elastin and collagen are extracellular matrix proteins responsible for the structural integrity and function of tissues. While collagen brings resistance and support to tissues, elastin endows them with their characteristic elasticity properties [1]. Both macromolecules are extremely long-lived. The half-life of collagen is estimated to be 20 years, that of elastin to be 70 years [2]. In contrast to collagen, elastin undergoes virtually no turnover. As a consequence, and because this protein is deposited only during the early stages of life [1], it is assumed that each individual possesses an ‘elastin capital’ that is supposed to last for life [3]. Fortunately,

elastin is extremely stable and resistant. Nevertheless, during aging, continuous mechanical stress and an increase in elastase activity contribute to the fragmentation of elastic fibers resulting in the release of elastin-derived peptides (EDPs) [4].

Alteration of elastic fiber biology is one of the hallmarks of aging [5]. Aged individuals experience slow and progressive alterations of the elastic functions of their organs, notably in the cardiovascular and respiratory systems. On the grounds of these observations, Robert and colleagues [5] suggested that life expectancy could somehow be limited by elastin aging.

## Abbreviations

DMEM, Dulbecco’s modified eagle medium; EDP, elastin-derived peptide; MMP, matrix metalloprotease;  $\kappa$ E, kappa-elastin.

During the past decades, EDPs, which were first envisaged as mere waste products resulting from elastin aging, have been shown to be bioactive compounds regulating numerous biological processes [6]. Notably, it has been shown that the presence of EDPs could promote tumor invasion of melanoma [7], fibroblastoma [8], lung carcinoma [9] and glioblastoma [10] cells.

Elastosis is a feature commonly observed in breast cancers [11]. Ductal elastosis is associated with carcinoma [12], notably invasive ones [13,14]. Further, it has been reported that elastosis increases progressively with the severity of breast disease [15]. Nevertheless, the prognostic value of the occurrence of elastosis is still under discussion as stromal elastosis is correlated with lower Ki67 expression in tumors [11].

Breast cancer elastosis is a complex phenomenon combining both elastin deposition and elastin degradation [16,17]. Thus, elastosis results in both deposition of elastotic masses and local production of elastin fragments. From the matrix point of view, these two components of elastosis need to be distinguished. Indeed, fragments originating from a degraded matrix provide cells with signals that are very different from those given by their parent protein. For instance, stromal cells adhere to elastin [18] but migrate and/or proliferate when they are incubated with elastin fragments [19]. This differential behavior is the keystone of the matrikine concept [20,21].

Therefore, the occurrence of breast cancer elastosis suggests that stromal and tumor cells could be exposed to EDPs, especially in aged subjects as EDP production is a hallmark of aging. Given that these matrikines could change the behavior of several tumor cells [19], we proposed to determine whether EDPs could influence breast cancer cells. The cellular model chosen was the invasive MDA-MB-231 cell line. Strikingly, our data suggest that the presence of EDPs contributes to an enhanced invasiveness of these tumor cells by engaging matrix metalloproteinase (MMP)-14. The significance of this finding is discussed.

## Materials and methods

### Reagents

Elastin peptides were prepared as described [22]. Briefly, insoluble elastin was prepared from bovine ligamentum nuchae by hot alkali treatment. Comparing its amino acid composition with that predicted from the elastin gene product assessed its purity. Soluble elastin peptides were further obtained from insoluble elastin by organo-alkaline hydrolysis. This was achieved using 1 M KOH in 80% aqueous ethanol. The obtained mixture of elastin peptides

is termed kappa-elastin ( $\kappa$ E) and exhibits the same biological properties as physiological elastin hydrolysates obtained using elastase [23] as it contains several peptides harboring the bioactive GXXPG motif [24]. Accordingly,  $\kappa$ E is used as a model of EDPs.

Analysis of human and bovine elastin gene sequences demonstrate that they share numerous repetitive sequence similarities [25]. Namely, the bovine gene harbors sequence motifs largely found in the human sequence (GXXPG motifs). Thus, while bovine elastin is different from human elastin, peptides obtained from their digestion have comparable structural features [26,27], making of bovine  $\kappa$ E a good model for human elastin peptides.

The circulating concentration of EDPs is estimated to be in the order of  $\text{ng}\cdot\text{mL}^{-1}$  in healthy individuals and  $\mu\text{g}\cdot\text{mL}^{-1}$  in pathological situations where elastin is fragmented [28–30]. As a consequence,  $\kappa$ E is commonly used at  $50\ \mu\text{g}\cdot\text{mL}^{-1}$  on cells [9].

Rabbit anti-MMP-14 antibody was purchased from Genetex (distributed by Euromedex, Mundolsheim, France). Mouse anti-MMP-2 (clone CA-4001), rabbit anti-MMP-14 antibodies, IgGs used as negative controls and FluorSave Reagent were obtained from Merck Millipore (Saint Quentin-en-Yvelines, France). Anti-rabbit AlexaFluor 568 was purchased from Thermo Fisher Scientific (Villebon sur Yvette, France). The metalloproteinase inhibitor 1,10-phenanthroline monohydrate, the serine proteases inhibitor aprotinin and other chemicals were from Sigma-Aldrich (Saint Quentin Fallavier, France).

### Cell culture

The human breast cancer cell line MDA-MB-231 (ACC732) was purchased from DSMZ (Leibniz Institute DSMZ – German Collection of Microorganisms and Cell Cultures). Cells were cultured in Dulbecco's modified eagle medium (DMEM) supplemented with 10% fetal calf serum (FCS),  $100\ \text{units}\cdot\text{mL}^{-1}$  penicillin and  $100\ \mu\text{g}\cdot\text{mL}^{-1}$  streptomycin, at  $37\ ^\circ\text{C}$  in a 5%  $\text{CO}_2$  humidified atmosphere. For experiments, MDA-MB-231 cells in logarithmic growth phase or at 80% confluence were cultured for 14 h in DMEM without FCS before treatment with  $50\ \mu\text{g}\cdot\text{mL}^{-1}$  of  $\kappa$ E.

### *In vitro* invasion assay

Invasion of breast cancer cells was examined using a modified Boyden chambers technique [31] with 24-well inserts (8  $\mu\text{m}$  pores) coated with  $25\ \mu\text{g}$  of Matrigel<sup>®</sup> (BD Biosciences, Franklin Lakes, NJ, USA). The lower chambers were filled with  $750\ \mu\text{L}$  DMEM supplemented with 10% FCS. MDA-MB-231 cells ( $2 \times 10^4$  cells per well) were seeded in the upper compartment of the inserts in  $100\ \mu\text{L}$  of DMEM with or without  $\kappa$ E ( $50\ \mu\text{g}\cdot\text{mL}^{-1}$ ) and cultured at  $37\ ^\circ\text{C}$ . The inhibitors aprotinin ( $100\ \mu\text{g}\cdot\text{mL}^{-1}$ ) and 1,10-phenanthroline ( $100\ \mu\text{M}$ ), anti-MMP-14 ( $20\ \mu\text{g}\cdot\text{mL}^{-1}$ ) and

anti-MMP-2 antibodies ( $20 \mu\text{g}\cdot\text{mL}^{-1}$ ) were added in the upper chamber with  $\kappa\text{E}$ . After 6 h of incubation, non-invasive cells on the upper surface of the filter were wiped off with a cotton swab, while the invasive cells on the lower surface of the filter were fixed with methanol and stained with crystal violet. Invasiveness was determined by counting cells in 10 random fields per well, using light microscopy (Carl Zeiss Axio Observer, Oberkochen, Germany). Each assay was performed in triplicate and repeated at least five times. Due to variation in the number of invasive cells from different experiments, the results were normalized to control conditions.

### Gelatin zymography analysis

MDA-MB-231 cells at subconfluence were cultured for 14 h in DMEM without FCS. Cells were then incubated in six-well plate precoated with Matrigel for 6 h in serum-free culture medium with or without  $\kappa\text{E}$  ( $50 \mu\text{g}\cdot\text{mL}^{-1}$ ). Conditioned media were harvested and centrifuged at  $500 g$  for 10 min to remove cellular debris and then concentrated with Vivaspin concentrators (Sartorius, Göttingen, Germany). Conditioned media from HT1080 cell cultures were used as positive controls.

Gelatinase activity in conditioned medium was determined by electrophoresis under non-reducing conditions on an SDS/polyacrylamide gel containing 0.1% gelatin. After electrophoresis, gels were washed for 1 h at room temperature in a 2.5% (v/v) Triton X-100 solution to remove SDS, then incubated at  $37^\circ\text{C}$  for 24 h in 50 mM Tris/HCl (pH 7.6) containing 5 mM  $\text{CaCl}_2$ , 100 mM NaCl and 0.01% (v/v) Triton X-100. The gels were then stained with 0.1% (w/v) Coomassie brilliant blue R-250 (Sigma-Aldrich) in 45% (v/v) methanol/10% (v/v) acetic acid. After 45 min, the gels were destained with 25% (v/v) methanol/10% acetic acid for 30 min. The proteolytic activity was detected as clear bands on a blue background of the Coomassie brilliant blue-stained gel.

### RNA isolation and RT-PCR

Total mRNAs were extracted with TRIzol reagent (Thermo Fisher Scientific) and separated from other cellular materials by using chloroform/isoamyl alcohol (24 : 1) and centrifugation ( $12\,000 g$ ,  $4^\circ\text{C}$ , 15 min). Total mRNAs were then precipitated with isopropanol, washed with 75% ethanol and resuspended in water. The quantity and quality of RNA were determined by spectroscopy and migration on agarose gel. Two hundred and fifty nanograms of total mRNA was reverse-transcribed using the Verso cDNA kit (Thermo Fisher Scientific) according to the manufacturer's instructions. Real-time PCR was then performed using an Absolute SYBR Green mix (Thermo Fisher Scientific) and a CFX 96 Touch Real-Time PCR Detection System (Bio-Rad, Hercules, CA, USA). The cycle threshold ( $C_t$ ) values were

recorded using Bio-Rad CFX MANAGER 3.0 software. PCR primers were synthesized by Eurogentec (Liège, Belgium) as follows ( $5'$ – $3'$ ): for MMP-2: TCTTCCCCTTCACTTTCCTG and ACTTGCGGTCGTCATCGT; for MMP-14: AAC CAAGTGATGGATGGATAC C and CTCCTTAATGT GCTTGGGGTAG; for RS18: GCAGAATCCACGCCAG TACAA and GCCAGTGGTCTTGGTGTGCT; for RPL 32: CATTGGTTATGGAAGCAACAAA and TTCTTGGA GGAAACATTGTGAG. PCR conditions were 15 min at  $95^\circ\text{C}$ , followed by 40 cycles each consisting of 15 s at  $95^\circ\text{C}$  (denaturation) and 1 min at  $60^\circ\text{C}$  (annealing/extension). PCR efficiency of the primer sets (MMP-2, MMP-14, RS18 and RPL32) was controlled via the slope of a standard curve. Results were standardized to RS18 and RPL32 gene expression levels using GENEX software (Bio-Rad).

### Immunofluorescence and confocal microscopy

MDA-MB-231 cells ( $1.5 \times 10^4$ ) were seeded onto Matrigel-coated glass coverslips and cultured for 24 h in DMEM supplemented with 10% FCS at  $37^\circ\text{C}$ . After two washes with PBS, cells were cultured with or without  $\kappa\text{E}$  ( $50 \mu\text{g}\cdot\text{mL}^{-1}$ ) for 6 or 24 h in DMEM without FCS, then fixed in 2% paraformaldehyde, washed with PBS and incubated for 1 h at room temperature in blocking solution (PBS containing 3% bovine serum albumin). Cells were then incubated overnight at  $4^\circ\text{C}$  with MMP-14 primary antibody (rabbit anti-human MMP-14 antibody, clone EP1264Y, GeneTex), washed and stained for 30 min at room temperature with goat anti-rabbit secondary antibody (Invitrogen/Thermo Fisher Scientific) conjugated to Alexa Fluor 568 and Hoescht reagent. Finally, they were mounted in FluorSave Reagent (Merck, Darmstadt, Germany) and examined using an LSM710 NLO laser scanning confocal microscope (Carl Zeiss Axio Observer). Emitted fluorescence was detected through the use of the appropriate filter set, and representative images from three separate experiments were treated and merged with IMAGEJ software (NIH, Bethesda, MD, USA).

### Statistical analysis

The results are expressed as mean  $\pm$  standard error of the mean. The experiments were performed at least three times. Every individual experiment was performed in triplicate. Statistical significance of differences was assessed using a two-sided paired Student's *t* test. Results are considered significantly different when the *P*-value was  $< 0.05$ .

## Results

### Elastin-derived peptides promote MDA-MB-231 cell invasion

Elastin-derived peptides exhibit numerous biological activities linked to cancer progression [6]. For instance,

it has been shown that their presence could promote tumor invasion of melanoma [7], fibroblastoma [8], lung carcinoma [9] and glioblastoma [10] cells. Strikingly, their influence on breast cancer cells remained undocumented.

As a consequence, the first objective of the present study was to determine if EDPs could have an effect on breast cancer cells. To this end, we analyzed their effect on the MDA-MB-231 cell line, which is a cellular model for triple-negative tumors [32]. We evaluated the consequence of their presence for cell adhesion, proliferation, migration and invasiveness.

We observed that EDPs had no significant effect on MDA-MB-231 cell adhesion (Fig. S1). Likewise, EDPs failed to promote cell proliferation at 24 h of culture but a significant difference was observed at 48 h and beyond (Fig. S2). As a consequence, we later made our invasion measurement at 6 h in order to avoid any unwanted effects due to cell proliferation. Finally, our data indicated that EDPs treatment had no effect on MDA-MB-231 cell migration (Fig. S3). In contrast, we observed that EDP treatment had an impact on MDA-MB-231 cell invasion (Fig. 1). In these experiments, the addition of EDPs ( $\kappa$ E,  $50 \mu\text{g}\cdot\text{mL}^{-1}$ ) in the upper compartment of the transwells where the tumor cells were present resulted in a significant increase (about 34%) in their capacity to invade the Matrigel.

This result therefore suggested that EDPs could promote invasiveness of MDA-MB-231 breast cancer cells and thus enhance their aggressiveness.

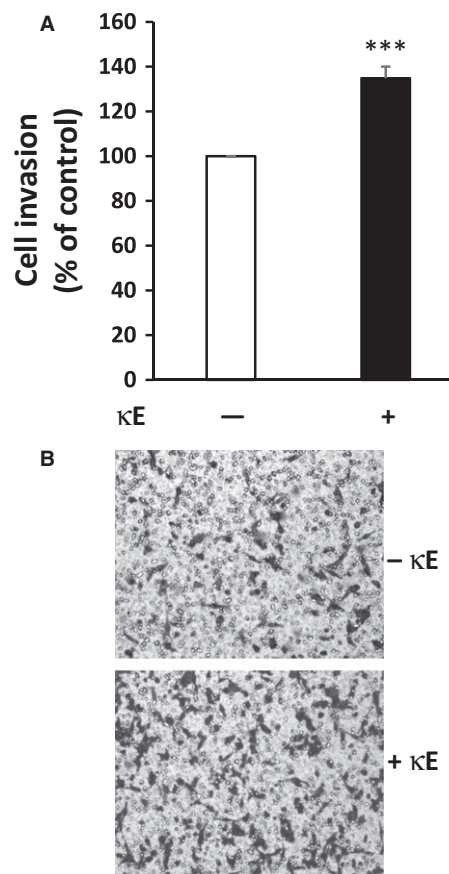
### EDP-induced MDA-MB-231 cell invasion relies on MMP involvement

In order to have further insights into the cellular events explaining the increased invasiveness of MDA-MB-231 cells in the presence of EDPs, we analyzed the contribution of protease cascades to this phenomenon.

The MMPs and Ser-proteases are critically involved in tumor invasion [33]. In order to check whether these protease cascades are involved in the invasion process promoted by EDPs, we stimulated MDA-MB-231 cells in the presence of pan-inhibitors of these protease activities, namely aprotinin ( $100 \mu\text{g}\cdot\text{mL}^{-1}$ ) for Ser-proteases and 1,10-phenanthroline ( $100 \mu\text{M}$ ) for MMPs.

As shown in Fig. 2A, the inhibition of the Ser-proteases did not significantly block EDP-induced MDA-MB-231 cell invasion. This observation suggested that Ser-proteases were not involved in EDP-induced MDA-MB-231 cell invasion.

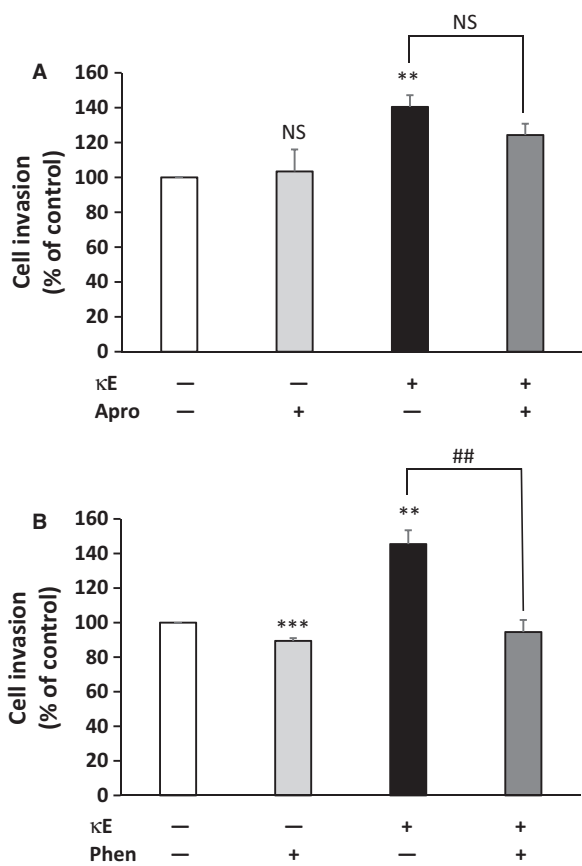
We thus analyzed the involvement of MMPs (Fig. 2B). When cells were treated with 1,10-phenanthroline alone, the capacity of MDA-MB-231 cells to



**Fig. 1.** Elastin-derived peptides promote MDA-MB-231 cancer cell invasiveness. Cells were incubated for 6 h in the presence or absence of  $\kappa$ E ( $50 \mu\text{g}\cdot\text{mL}^{-1}$ ) in a modified Boyden chamber in order to assess their invasiveness. Cells were placed in the upper compartment of the system in the presence of the agonist while the lower compartment received only culture medium supplemented with 10% serum. Cells having invaded the Matrigel separating the two compartments and being present on its lower surface were counted after 6 h. (A) Invasiveness expressed as the percentage of the control, here MDA-MB-231 cells in the absence of  $\kappa$ E. (B) Representative images of violet crystal-stained invasive cells. \*\*\* $P < 0.001$  ( $n = 13$ ).

invade was slightly reduced. This significant decrease was expected as MDA-MB-231 cells are invasive and therefore express several MMPs. Strikingly, when cells were stimulated by EDPs in the presence of 1,10-phenanthroline, the invasive capacity of the cells was significantly reduced and returned to a level comparable to the control. These data strongly suggested that the invasive capacity exhibited by MDA-MB-231 cells in the presence of EDPs relied on MMP catalytic activity. We therefore concluded that the engagement of the MMP cascade can explain the increased invasiveness of MDA-MB-231 cells in the presence of EDPs.





**Fig. 2.** Effect of proteases inhibition on EDP-induced invasiveness of MDA-MB-231 cells. Cells were incubated for 6 h in the upper compartment of the modified Boyden chamber in the presence or absence of  $\kappa$ E ( $50 \mu\text{g}\cdot\text{mL}^{-1}$ ) and inhibitors. Cells having invaded were counted after 6 h. Invasiveness is expressed as a percentage of the control, here MDA-MB-231 cells in the absence of  $\kappa$ E. (A) Inhibition of Ser-proteases with  $100 \mu\text{g}\cdot\text{mL}^{-1}$  aprotinin (Apro). (B) Inhibition of MMPs with  $100 \mu\text{M}$  1,10-phenanthroline (Phen). Labels above the bars indicate the following: \*comparison with the control (white bar); #comparison between the indicated experimental conditions. \*\*, ## $P < 0.01$ ; \*\*\*, ## $P < 0.001$ ; NS, not significant ( $n = 3$ ).

### EDP treatment increases MMP-14 cell surface levels in MDA-MB-231 cells

Among MMPs, MMP-2 (gelatinase A) and MMP-14 (MT1-MMP) have been linked to cancer invasion promoted by EDPs [9,23,34]. While MMP-2 can be released by cells to degrade their surrounding matrix, MMP-14 is strictly a membrane-associated protease [35].

MMP-14 is of particular interest because this enzyme is involved in multiple events linked to breast cancer invasion, such as basement membrane breaching, tumor invasion, intracellular trafficking and cell motility regulation [35].

In the absence of EDPs, MDA-MB-231 cells evidenced a faint MMP-14 labelling consistent with their invasive phenotype. The level of MMP-14 present on the cell surface was considerably higher when these cells were cultured in the presence of EDPs for 24 h (Fig. 3A). Strikingly, this increase in MMP-14 level at the cell surface was also observed when MDA-MB-231 cells were treated with EDPs for 6 h (Fig. 3B). Altogether these observations suggest that EDP treatment increases the presence of MMP-14 at the cell surface of the breast cancer cells. This assumption was in good agreement with the data obtained previously, but at that point we could not link MMP-14 directly to the observed increased invasiveness of MDA-MB-231 cells in the presence of EDPs.

### EDP treatment increases MMP-2 secretion and activation by MDA-MB-231 cells

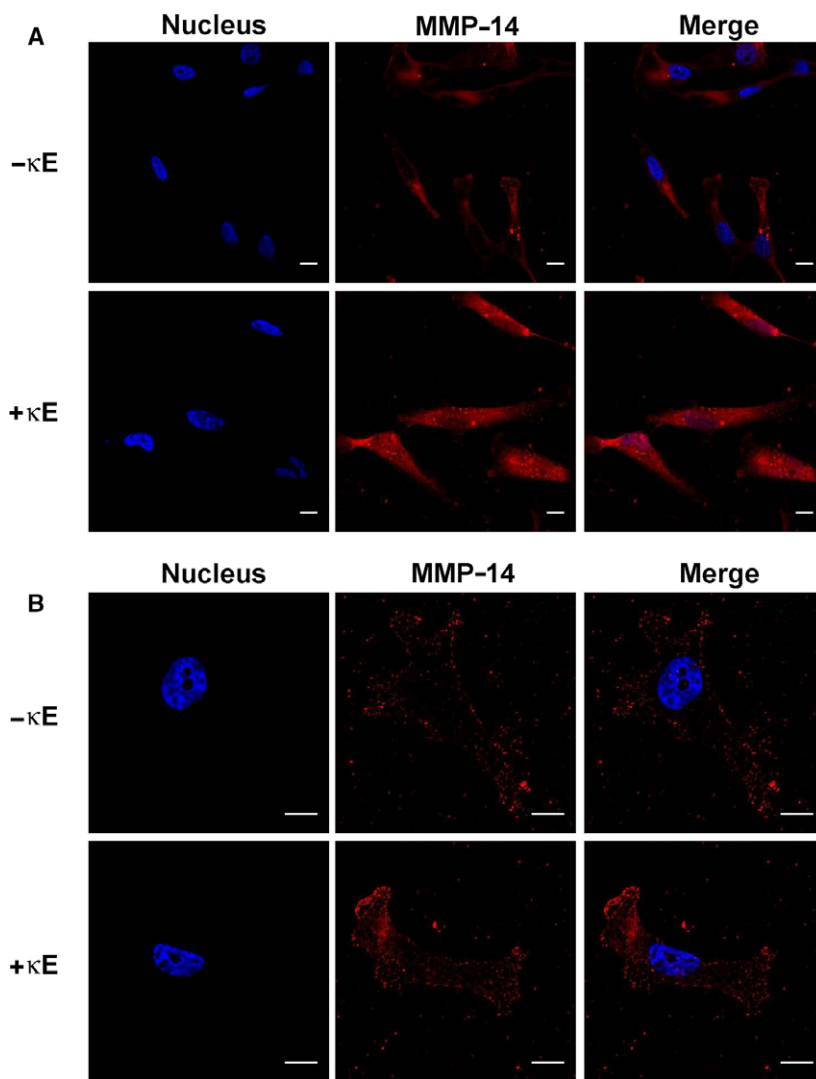
MMP-2 secretion after EDP treatment of MDA-MB-231 cells for 6 h was investigated by zymography. As shown in Fig. 4, these cells secreted MMP-2 after  $\kappa$ E treatment but not in the absence of treatment. Strikingly, MMP-2 existed in both the inactive pro-MMP-2 and active MMP-2 forms when MDA-MB-231 cells were exposed to EDPs. As MMP-2 was mostly in its active form, this finding suggested that MMP-2 could be involved in the enhanced EDP-induced MDA-MB-231 invasive behavior.

### Effect of EDPs on MMP-2 and MMP-14 expression in MDA-MB-231 cells

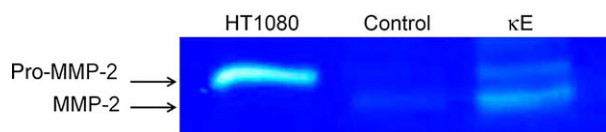
As EDPs had effects on both MMP-14 and MMP-2 protein levels, we further determined whether EDPs could also up-regulate their expression (Fig. 5). After 6 h of treatment, neither MMP-2 nor MMP-14 RNA level was modified as compared with their levels in the absence of EDPs. In contrast, a slight, but significant, increase of MMP-14 RNA level was observed at 24 h suggesting that EDPs could promote MMP-14 gene expression at this time point.

### MMP-2 and MMP-14 are involved in EDP-induced MDA-MB-231 cell invasion

In order to assess the role of MMP-14 and MMP-2 in EDP-induced MDA-MB-231 cell invasiveness, we used antibodies directed against these enzymes to selectively block their contribution to this effect (Fig. 6). The data indicate that the use of the anti-MMP-14 alone slightly, but significantly, reduced MDA-MB-231 cell invasiveness. This result is consistent with the invasive



**Fig. 3.** Confocal imaging of MDA-MB-231 cells reveals an increased level of MMP-14 at the surface of EDP-treated cells. Cells were cultured on Matrigel in the presence or absence of  $\kappa$ E ( $50 \mu\text{g}\cdot\text{mL}^{-1}$ ) for 24 h (A) or 6 h (B). MMP-14 was imaged by confocal microscopy using an AlexaFluor568-coupled anti-MMP-14 antibody. MMP-14 labelling appears red and cell nuclei appear blue following Hoechst staining. All images are representative of three independent experiments. Scale bars, 10  $\mu\text{m}$ .



**Fig. 4.** Elastin-derived peptides induced MMP-2 secretion by MDA-MB-231 cells. Gelatinolytic activity (72 kDa, pro-MMP-2; 62 kDa, MMP-2) was evaluated by gelatin zymography in 6 h-conditioned media of MDA-MB-231 cells treated ( $\kappa$ E) or not treated (Control) with  $\kappa$ E ( $50 \mu\text{g}\cdot\text{mL}^{-1}$ ). HT1080 cell line conditioned medium was used as positive control [36]. The zymogram image is representative of three independent experiments.

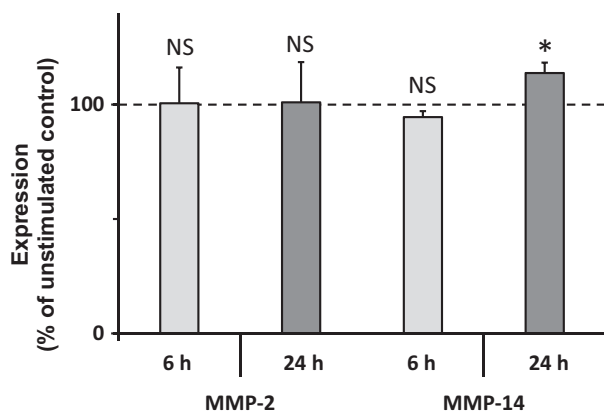
phenotype and the fact that these cells express MMP-14 at their surface. When cells were treated in the presence of both anti-MMP-14 and EDPs, we observed that the EDP-promoted invasiveness was abolished as no significant effect of EDPs was evident.

Similar results were obtained blocking MMP-2 activity except that the anti-MMP-2 antibody alone had no effect. In both cases, incubating the cells with an IgG having the corresponding antibody isotype alone had no effect on cell invasiveness (data not shown).

Altogether, these results clearly indicated that MMP-14 and MMP-2 activities are involved in EDP-induced MDA-MB-231 cell invasiveness.

## Discussion

The extracellular matrix has long been considered a support tissue for cells. It is now well established that this intricate network of fibers is extremely dynamic and matrix remodeling is a common term used to describe the interplay of synthesis and degradation characterizing matrix biology [1]. As long as this



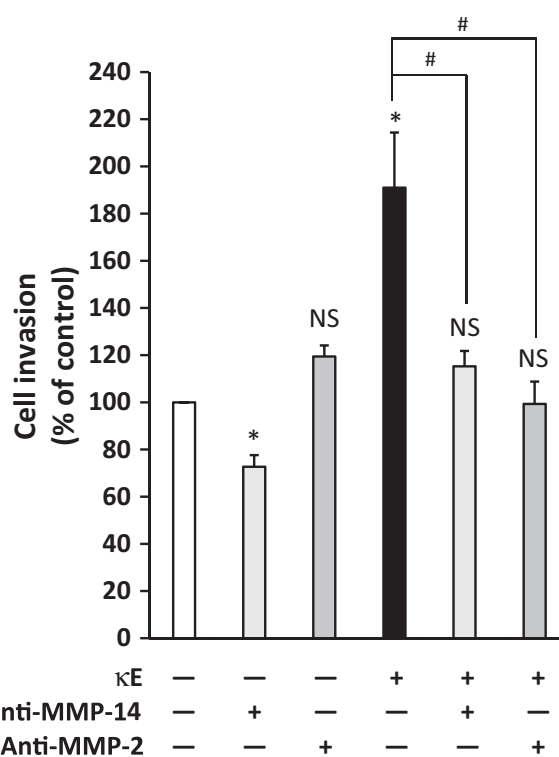
**Fig. 5.** Effect of EDPs on MMP-2 and MMP-14 gene expression. RT-qPCR analysis of MMP-2 and MMP-14 mRNA levels was performed from MDA-MB-231 cells cultured 6 h ( $n = 5$ ) and 24 h ( $n = 3$ ) in the presence or absence (Control) of  $\kappa$ E ( $50 \mu\text{g}\cdot\text{mL}^{-1}$ ) and normalized to the RS18 and RPL32 mRNA values. Data are expressed as percentages of the corresponding unstimulated control. NS, not significant; \* $P < 0.05$ .

equilibrium is balanced, matrix homeostasis is achieved and the supported tissue behaves as it should. However, should this balance be disrupted, a pathological situation can occur. Late stages of chronic obstructive pulmonary disease and formation of aneurysms exemplify this situation.

Actually, matrix degradation is rarely massive. More often it is a localized phenomenon with a limited duration. Wound healing is a good illustration of this controlled matrix remodeling. Nevertheless, matrix degradation can also be a chronic event. This is typical of elastin biology. Elastin is deposited in the early stages of life, providing an elastin capital for life. Although elastin is an extremely resistant molecule, its permanent subjection to mechanical strain together with aggression by elastases lead it to age and break. Elastin aging is thus translated into loss of elasticity, which is a visible marker of aging, but is also seen in the constant release of elastin-derived peptides [3,4].

It has now been demonstrated that EDPs are not mere waste products. These peptides possess intrinsic biological activity some of which is directly linked to tumor progression [6]. As a consequence, the aim of this work was to explore the possibility that EDPs could contribute to breast cancer invasiveness in the context of an aging tissue. In this study, tissue aging was simulated by the addition of EDPs to cells.

Our data indicate that EDPs have no effect on MDA-MB-231 cell proliferation, adhesion on gelatin and migration (Figs S1–S3). In contrast, their ability to invade a matrix environment was enhanced in the



**Fig. 6.** Sequestration of MMP-14 and MMP-2 activities by selective antibodies blocks EDP-induced MDA-MB-231 cell invasiveness. Cells were placed in the upper compartment of the Transwell system in the presence or absence of the corresponding anti-MMP antibody (rabbit anti-MMP-14 or mouse anti-MMP-2,  $20 \mu\text{g}\cdot\text{mL}^{-1}$  each). The agonist ( $\kappa$ E) was added (or not) simultaneously in the upper chamber, and cells are incubated for 6 h. Cells having invaded were counted after that period. Invasiveness is expressed as the percentage of the control, here MDA-MB-231 cells in the absence of  $\kappa$ E. Labels above the bars indicate the following: \*comparison with the control (white bar); #comparison between the indicated experimental conditions. \*,# $P < 0.05$ ; NS, not significant ( $n = 3$ ).

presence of EDPs (Fig. 1). Our results demonstrate that Ser-proteases are not involved in this process while the MMP cascade is (Fig. 2).

Interestingly, EDPs increased the levels of MMP-14 at the cell surface of MDA-MB-231 cells (Fig. 3), while engagement of MMP-14 following EDP treatment had only been evidenced for fibrosarcoma [36] and endothelial cells [37].

As already reported in fibrosarcoma [36], melanoma [38] and lung carcinoma [9], we observed that EDPs promoted MMP-2 secretion and activation in MDA-MB-231 cells (Fig. 4). Strikingly, the expression level of MMP-2 was not altered by EDP treatment while a slight increase of MMP-14 expression could be observed at 24 h (Fig. 5). As a consequence, we



conclude that EDPs could upregulate MMP-14 expression and availability in these cells. Finally, we proved that MMP-14 and MMP-2 are both involved in the increased invasiveness observed after EDP treatment as the selective blockade of these proteases blocked the effects of EDPs on invasiveness (Fig. 6). Strikingly, the selective inhibition of MMP-2 or MMP-14 returned the cell invasion level to that of the control suggesting that MMP-2 and MMP-14 activations could be linked.

The activation of MMP-2 by MMP-14 has been reported in the presence of TIMP-2 [39]. MDA-MB-231 cells express TIMP-2 (data not shown). In our conditions, this activation scheme of MMP-2 by MMP-14 is likely. The accumulation of active forms of MMP-2 in the conditioned medium of treated cells (Fig. 4) supports this view. Nevertheless, our work does not constitute a clear demonstration. The link between MMP-14 and MMP-2 activation has therefore to be explored further.

Taken together, our data suggest that EDPs could promote invasion of triple-negative cancer cells via MMP-14 and MMP-2. As a consequence, this work suggests that an environmental factor derived from an aged stroma or elastosis (elastin fragments) could possibly influence breast tumor progression by mobilizing greater amounts of active MMPs thereby modifying tumor cell invasive capacity.

## Conclusion

Our data provide new information on the place of EDPs in breast tumor progression. Indeed, these matrikines are characteristic of an aging environment and, in breast cancer, may also derive from the matrix remodeling occurring during elastosis.

Elastin-derived peptides possess numerous biological activities towards both cancer cells and their surrounding stroma. They potentiate the migration and matrix invasion of tumor cells [8–10,36,37]. They stimulate the migration and proliferation of monocytes and skin fibroblasts [40,41]. They up-regulate MMP expression by fibroblasts inducing a remodeling program in favor of melanoma cell invasion [7]. Additionally, they are pro-angiogenic [37,42,43], chemotactic for inflammatory cells [44–47] and promote elastase release [48–50]. Finally, EDPs are strong survival signals as they promote resistance to apoptosis [51].

As shown in this work, EDPs promote MDA-MB-231 breast cancer cell invasiveness. Thus, our data suggest that EDPs could be important players in the breast tumor environment. For all these reasons, we feel that the effect of these matrikines on mammary

tumors and their surroundings can no longer be overlooked, especially when aged subjects are considered.

## Acknowledgements

The authors thank Dr Christine Terryn from the Cellular and Tissular Imaging Platform for her skillful expertise in confocal microscopy. We also thank Fanja Rabenoelina for her help in RT-qPCR experiments. This work was supported by the Région Champagne Ardenne (grant D201114829).

## Author contributions

SS, LDe and LDu conceived the study; SS and LDe supervised the study; LO and SS performed the experiments; LC performed MMP-2 zymography experiments; SS, LO and LDe analyzed the results; LDe and SS wrote the manuscript; LM, CG and LDu revised the final manuscript.

## References

- 1 Mecham RP (ed.) (2011) *The Extracellular Matrix: An Overview*. Springer, Berlin, Heidelberg.
- 2 Shapiro SD, Endicott SK, Province MA, Pierce JA and Campbell EJ (1991) Marked longevity of human lung parenchymal elastic fibers deduced from prevalence of D-aspartate and nuclear weapons-related radiocarbon. *J Clin Invest* **87**, 1828–1834.
- 3 Duca L, Blaise S, Romier B, Laffargue M, Gayral S, El Btaouri H, Kawecki C, Guillot A, Martiny L, Debelle L *et al.* (2016) Matrix ageing and vascular impacts: focus on elastin fragmentation. *Cardiovasc Res* **110**, 298–308.
- 4 Baud S, Duca L, Bochicchio B, Brassart B, Belloy N, Pepe A, Dauchez M, Martiny L and Debelle L (2013) Elastin peptides in aging and pathological conditions. *Biomol Concepts* **4**, 65–76.
- 5 Robert L, Robert AM and Fülöp T (2008) Rapid increase in human life expectancy: will it soon be limited by the aging of elastin? *Biogerontology* **9**, 119–133.
- 6 Scandolera A, Odoul L, Salessse S, Guillot A, Blaise S, Kawecki C, Maurice P, El Btaouri H, Romier-Crouzet B, Martiny L *et al.* (2016) The elastin receptor complex: a unique matricellular receptor with high anti-tumoral potential. *Front Pharmacol* **7**, 32.
- 7 Devy J, Duca L, Cantarelli B, Joseph-Pietras D, Scandolera A, Rusciani A, Parent L, Thevenard J, Pasco SB, Tarpin M *et al.* (2010) Elastin-derived peptides enhance melanoma growth in vivo by upregulating the activation of Mcol-A (MMP-1) collagenase. *Br J Cancer* **103**, 1562–1570.

- 8 Donet M, Brassart-Pasco S, Salesse S, Maquart F-X and Brassart B (2014) Elastin peptides regulate HT-1080 fibrosarcoma cell migration and invasion through an Hsp90-dependent mechanism. *Br J Cancer* **111**, 139–148.
- 9 Toupance S, Brassart B, Rabenoelina F, Ghoneim C, Vallar L, Polette M, Debelle L and Birembaut P (2012) Elastin-derived peptides increase invasive capacities of lung cancer cells by post-transcriptional regulation of MMP-2 and uPA. *Clin Exp Metastasis* **29**, 511–522.
- 10 Coquerel B, Poyer F, Torossian F, Dulong V, Bellon G, Dubus I, Reber A and Vannier J-P (2009) Elastin-derived peptides: matrikines critical for glioblastoma cell aggressiveness in a 3-D system. *Glia* **57**, 1716–1726.
- 11 Chen Y, Klingen TA, Wik E, Aas H, Vigeland E, Liestøl K, Garred Ø, Mæhlen J, Akxlen LA and Lømo J (2014) Breast cancer stromal elastosis is associated with mammography screening detection, low Ki67 expression and favourable prognosis in a population-based study. *Diagn Pathol* **9**, 230.
- 12 Farahmand S and Cowan DF (1991) Elastosis in the normal aging breast. A histopathologic study of 140 cases. *Arch Pathol Lab Med* **115**, 1241–1246.
- 13 Pai MR, Pai KN, Rao RV, Naik R, Shankarnarayana P and Baliga P (1999) Connective tissue stromal changes in tumours and tumour-like lesions of the breast. *Indian J Pathol Microbiol* **42**, 327–332.
- 14 Zakout YM-A, Abdullah SM and Ali MA (2012) Assessment of elastosis in invasive ductal carcinoma of the breast compared to fibroadenoma among Sudanese patients using conventional histochemical methods. *Biotech Histochem* **87**, 122–125.
- 15 Parfrey NA and Doyle CT (1985) Elastosis in benign and malignant breast disease. *Hum Pathol* **16**, 674–676.
- 16 Khatun N, Arihiro K and Inai K (1992) Elastosis in breast—correlation with epithelial proliferation in benign disease and carcinomatous growth. *Hiroshima J Med Sci* **41**, 87–100.
- 17 Verhoeven D and Van Marck E (1993) Proliferation, basement membrane changes, metastasis and vascularization patterns in human breast cancer. *Pathol Res Pract* **189**, 851–861.
- 18 Groult V, Hornebeck W, Ferrari P, Tixier JM, Robert L and Jacob MP (1991) Mechanisms of interaction between human skin fibroblasts and elastin: differences between elastin fibres and derived peptides. *Cell Biochem Funct* **9**, 171–182.
- 19 Duca L, Floquet N, Alix AJ, Haye B and Debelle L (2004) Elastin as a matrikine. *Crit Rev Oncol Hematol* **49**, 235–244.
- 20 Maquart FX, Siméon A, Pasco S and Monboisse JC (1999) Regulation of cell activity by the extracellular matrix: the concept of matrikines. *J Soc Biol* **193**, 423–428.
- 21 Tran KT, Lamb P and Deng J-S (2005) Matrikines and matricryptins: implications for cutaneous cancers and skin repair. *J Dermatol Sci* **40**, 11–20.
- 22 Rusciani A, Duca L, Sartelet H, Chatron-Colliet A, Bobichon H, Ploton D, Le Naour R, Blaise S, Martiny L and Debelle L (2010) Elastin peptides signaling relies on neuraminidase-1-dependent lactosylceramide generation. *PLoS One* **5**, e14010.
- 23 Brassart B, Fuchs P, Huet E, Alix AJ, Wallach J, Tamburro AM, Delacoux F, Haye B, Emonard H, Hornebeck W *et al.* (2001) Conformational dependence of collagenase (matrix metalloproteinase-1) up-regulation by elastin peptides in cultured fibroblasts. *J Biol Chem* **276**, 5222–5227.
- 24 Blaise S, Romier B, Kawecki C, Ghirardi M, Rabenoelina F, Baud S, Duca L, Maurice P, Heinz A, Schmelzer CEH *et al.* (2013) Elastin-derived peptides are new regulators of insulin resistance development in mice. *Diabetes* **62**, 3807–3816.
- 25 Rosenbloom J, Bashir M, Yeh H, Rosenbloom J, Ornstein-Goldstein N, Fazio M, Kahari V-M and Uitto J (1991) Regulation of elastin gene expression. *Ann N Y Acad Sci* **624**, 116–136.
- 26 Debelle L, Alix AJP, Jacob M-P, Huvenne J-P, Berjot M, Sombret B and Legrand P (1995) Bovine elastin and  $\kappa$ -elastin secondary structure determination by optical spectroscopies. *J Biol Chem* **270**, 26099–26103.
- 27 Debelle L, Alix AJP, Wei SM, Jacob M-P, Huvenne J-P, Berjot M and Legrand P (1998) The secondary structure and architecture of human elastin. *FEBS J* **258**, 533–539.
- 28 Hong YJ, Kim J, Oh BR, Lee YJ, Lee EY, Lee EB, Lee S-H and Song YW (2012) Serum elastin-derived peptides and anti-elastin antibody in patients with systemic sclerosis. *J Korean Med Sci* **27**, 484.
- 29 Smith ER, Tomlinson LA, Ford ML, McMahon LP, Rajkumar C and Holt SG (2012) Elastin degradation is associated with progressive aortic stiffening and all-cause mortality in predialysis chronic kidney disease. *Hypertension* **59**, 973–978.
- 30 Yamanaka H, Osaka M, Takayama M, Munakata K, Nejima J and Katayama M (2014) Age-adjusted level of circulating elastin as a cardiovascular risk factor in medical check-up individuals. *J Cardiovasc Med (Hagerstown)* **15**, 364–370.
- 31 Simon N, Noël A and Foidart JM (1992) Evaluation of in vitro reconstituted basement membrane assay to assess the invasiveness of tumor cells. *Invasion Metastasis* **12**, 156–167.
- 32 Oh S, Ju J, Yang W, Lee K, Nam K and Shin I (2015) EGFR negates the proliferative effect of oncogenic HER2 in MDA-MB-231 cells. *Arch Biochem Biophys* **575**, 69–76.
- 33 Eatemadi A, Aiyelabegan HT, Negahdari B, Mazlomi MA, Daraee H, Daraee N, Eatemadi R and Sadroddiny E (2017) Role of protease and protease inhibitors in cancer pathogenesis and treatment. *Biomed Pharmacother* **86**, 221–231.

- 34 Ntayi C, Lorimier S, Berthier-Vergnes O, Hornebeck W and Bernard P (2001) Cumulative influence of matrix metalloproteinase-1 and -2 in the migration of melanoma cells within three-dimensional type I collagen lattices. *Exp Cell Res* **270**, 110–118.
- 35 Poincloux R, Lizárraga F and Chavrier P (2009) Matrix invasion by tumour cells: a focus on MT1-MMP trafficking to invadopodia. *J Cell Sci* **122**, 3015–3024.
- 36 Brassart B, Randoux A, Hornebeck W and Emonard H (1998) Regulation of matrix metalloproteinase-2 (gelatinase A, MMP-2), membrane-type matrix metalloproteinase-1 (MT1-MMP) and tissue inhibitor of metalloproteinases-2 (TIMP-2) expression by elastin-derived peptides in human HT-1080 fibrosarcoma cell line. *Clin Exp Metastasis* **16**, 489–500.
- 37 Fahem A, Robinet A, Cauchard JH, Duca L, Soula-Rothhut M, Rothhut B, Soria C, Guenounou M, Hornebeck W and Bellon G (2008) Elastokine-mediated up-regulation of MT1-MMP is triggered by nitric oxide in endothelial cells. *Int J Biochem Cell Biol* **40**, 1581–1596.
- 38 Ntayi C, Labrousse A-L, Debret R, Birembaut P, Bellon G, Antonicelli F, Hornebeck W and Bernard P (2004) Elastin-derived peptides upregulate matrix metalloproteinase-2-mediated melanoma cell invasion through elastin-binding protein. *J Invest Dermatol* **122**, 256–265.
- 39 Polette M and Birembaut P (1998) Membrane-type metalloproteinases in tumor invasion. *Int J Biochem Cell Biol* **30**, 1195–1202.
- 40 Senior RM, Griffin GL, Mecham RP, Wrenn DS, Prasad KU and Urry DW (1984) Val-Gly-Val-Ala-Pro-Gly, a repeating peptide in elastin, is chemotactic for fibroblasts and monocytes. *J Cell Biol* **99**, 870–874.
- 41 Shiratsuchi E, Ura M, Nakaba M, Maeda I and Okamoto K (2010) Elastin peptides prepared from piscine and mammalian elastic tissues inhibit collagen-induced platelet aggregation and stimulate migration and proliferation of human skin fibroblasts. *J Pept Sci* **16**, 652–658.
- 42 Robinet A, Fahem A, Cauchard J-H, Huet E, Vincent L, Lorimier S, Antonicelli F, Soria C, Crepin M, Hornebeck W *et al.* (2005) Elastin-derived peptides enhance angiogenesis by promoting endothelial cell migration and tubulogenesis through upregulation of MT1-MMP. *J Cell Sci* **118**, 343–356.
- 43 Gunda V, Verma RK and Sudhakar YA (2013) Inhibition of elastin peptide-mediated angiogenic signaling mechanism(s) in choroidal endothelial cells by the  $\alpha 6(\text{IV})\text{NC1}$  collagen fragment. *Invest Ophthalmol Vis Sci* **54**, 7828–7835.
- 44 Nowak D, Głównczyńska I and Piasecka G (1989) Chemotactic activity of elastin-derived peptides for human polymorphonuclear leukocytes and their effect on hydrogen peroxide and myeloperoxidase release. *Arch Immunol Ther Exp (Warsz)* **37**, 741–748.
- 45 Hance KA, Tataria M, Ziporin SJ, Lee JK and Thompson RW (2002) Monocyte chemotactic activity in human abdominal aortic aneurysms: role of elastin degradation peptides and the 67-kD cell surface elastin receptor. *J Vasc Surg* **35**, 254–261.
- 46 Houghton AM (2006) Elastin fragments drive disease progression in a murine model of emphysema. *J Clin Invest* **116**, 753–759.
- 47 Guo G, Gehle P, Doelken S, Martin-Ventura JL, von Kodolitsch Y, Hetzer R and Robinson PN (2011) Induction of macrophage chemotaxis by aortic extracts from patients with marfan syndrome is related to elastin binding protein. *PLoS One* **6**, e20138.
- 48 Hauck M, Seres I, Kiss I, Saulnier J, Mohacsi A, Wallach J and Fulop T (1995) Effects of synthesized elastin peptides on human leukocytes. *Biochem Mol Biol Int* **37**, 45–55.
- 49 Péterszegi G, Texier S, Robert AM, Moulias R and Robert L (1997) Increased elastase and cathepsin G activity in activated lymphocytes from aged patients. *Arch Gerontol Geriatr* **25**, 285–298.
- 50 Varga ZS, Jacob MP, Robert L, Csongor J and Fulop T (1997) Age-dependent changes of K-elastin stimulated effector functions of human phagocytic cells: relevance for atherogenesis. *Exp Gerontol* **32**, 653–662.
- 51 Cantarelli B, Duca L, Blanchevoye C, Poitevin S, Martiny L and Debelle L (2009) Elastin peptides antagonize ceramide-induced apoptosis. *FEBS Lett* **583**, 2385–2391.

## Supporting information

Additional Supporting Information may be found online in the supporting information tab for this article:

**Fig. S1.** Influence of EDPs on MDA-MB-231 cancer cell adhesion.

**Fig. S2.** Influence of EDPs on MDA-MB-231 cell proliferation.

**Fig. S3.** Effect of EDPs on MDA-MB-231 cell migration.