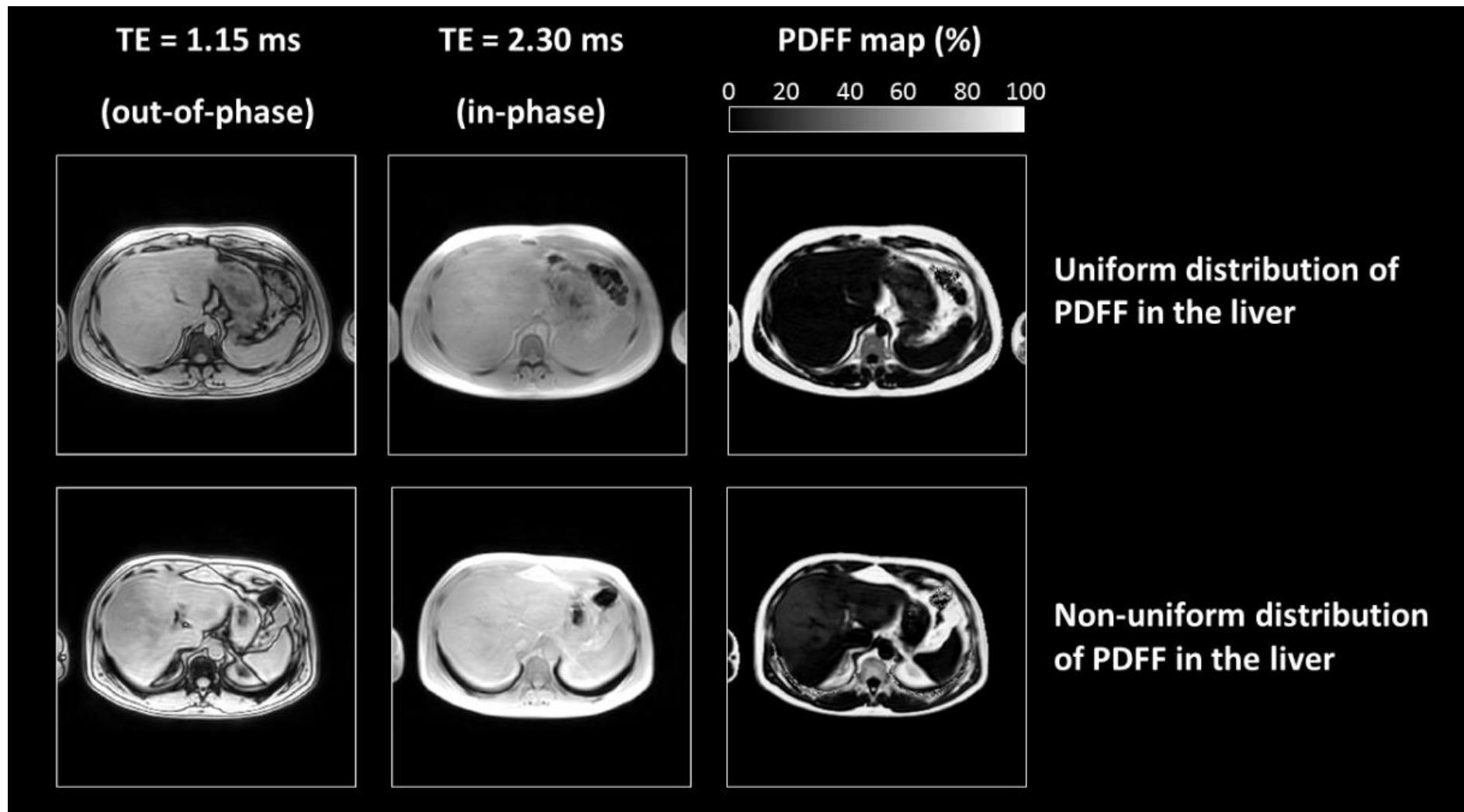


Supplementary figure 1: Procedure of pixel exclusion after the initial segmentation to compute the mean *ndb* (number of double bonds) and *nmidb* (number of methylene-interrupted double bonds). Pictures in grey scale are displaying the subcutaneous and visceral adipose tissue masks merged with the PDFF maps. Pictures in color scale are displaying the subcutaneous and visceral adipose tissue masks merged with the *ndb* and *nmidb* maps.



Supplementary figure 2: Two examples of exams with different PDFF distribution in the liver. 3D MRI acquisition parameters were the following : 8 echoes ($n \times 1.15$ ms TE with $n=1, \dots, 8$), 5° flip angle, 10.3 ms TR, $384 \times 420 \times 320$ mm³ FOV, $256 \times 256 \times 80$ matrix size, 20.8 s scan time. This acquisition was made in breath-holding. The first (out of phase) and second (in-phase) echoes as well as the PDFF map are displayed.