



# Exploring the effect of crisis on cooperatives: A Bayesian performance analysis of French craftsmen cooperatives

Anne Musson, Damien Rousselière

## ► To cite this version:

Anne Musson, Damien Rousselière. Exploring the effect of crisis on cooperatives: A Bayesian performance analysis of French craftsmen cooperatives. [University works] Inconnu. 2018, 44 p. hal-01911612

**HAL Id: hal-01911612**

**<https://hal.science/hal-01911612>**

Submitted on 5 Jun 2020

**HAL** is a multi-disciplinary open access archive for the deposit and dissemination of scientific research documents, whether they are published or not. The documents may come from teaching and research institutions in France or abroad, or from public or private research centers.

L'archive ouverte pluridisciplinaire **HAL**, est destinée au dépôt et à la diffusion de documents scientifiques de niveau recherche, publiés ou non, émanant des établissements d'enseignement et de recherche français ou étrangers, des laboratoires publics ou privés.

# Exploring the effect of crisis on cooperatives: A Bayesian performance analysis of French craftsmen cooperatives

Anne MUSSON, Damien ROUSSELIÈRE

**Working Paper SMART – LERECO N°18-07**

October 2018



UMR INRA-Agrocampus Ovest **SMART - LERECO**

(Laboratoires d'Etudes et de Recherches en Economie sur les Structures et Marchés Agricoles, Ressources et Territoires)

*Les Working Papers SMART-LERECO ont pour vocation de diffuser les recherches conduites au sein des unités SMART et LERECO dans une forme préliminaire permettant la discussion et avant publication définitive. Selon les cas, il s'agit de travaux qui ont été acceptés ou ont déjà fait l'objet d'une présentation lors d'une conférence scientifique nationale ou internationale, qui ont été soumis pour publication dans une revue académique à comité de lecture, ou encore qui constituent un chapitre d'ouvrage académique. Bien que non revus par les pairs, chaque working paper a fait l'objet d'une relecture interne par un des scientifiques de SMART ou du LERECO et par l'un des deux éditeurs de la série. Les Working Papers SMART-LERECO n'engagent cependant que leurs auteurs.*

*The SMART-LERECO Working Papers are meant to promote discussion by disseminating the research of the SMART and LERECO members in a preliminary form and before their final publication. They may be papers which have been accepted or already presented in a national or international scientific conference, articles which have been submitted to a peer-reviewed academic journal, or chapters of an academic book. While not peer-reviewed, each of them has been read over by one of the scientists of SMART or LERECO and by one of the two editors of the series. However, the views expressed in the SMART-LERECO Working Papers are solely those of their authors.*

## **Exploring the effect of crisis on cooperatives: A Bayesian performance analysis of French craftsmen cooperatives**

Anne MUSSON

*UMR SMART-LERECO, AGROCAMPUS OUEST, INRA, 49000, Angers, France  
ESSCA, Angers, France*

Damien ROUSSELIÈRE

*UMR SMART-LERECO, AGROCAMPUS OUEST, INRA, 49000, Angers, France  
CRISES, UQAM, Montréal, Canada*

### **Acknowledgements**

*We acknowledge a grant from the Scientific Council of the University of Angers for the project CODESOL. Data access to the Orbis database has been provided thanks to the project "Diversification des métiers des coopératives agricoles et agro-alimentaires" (SHRC Insights Grant), headed by Martine Vézina (HEC Montréal). We are indebted to Angela Cheptea and Laure Latruffe for their insightful suggestions and editorial assistance on a previous version.*

### **Corresponding author**

**Damien Rousselière**

AGROCAMPUS OUEST, Département Economie, Gestion, Société

2, rue André Le Nôtre

49045 Angers, France

Email: damien.rousseliere@agrocampus-ouest.fr

Téléphone / Phone: +33 (0)2 41 22 55 00

Fax: +33 (0)2 41 22 54 13

*Les Working Papers SMART-LERECO n'engagent que leurs auteurs.*

*The views expressed in the SMART-LERECO Working Papers are solely those of their authors*

## **Exploring the effect of crisis on cooperatives: A Bayesian performance analysis of French craftsmen cooperatives**

### **Abstract**

This paper aims at understanding the economic performance of craftsmen cooperatives during the crisis period. These cooperatives have the distinctive feature of being supply cooperatives. We use an exhaustive dataset for the French craftsmen cooperatives (2004-2014). We estimate Bayesian Translog econometric models in order to underline the impact of the 2008 crisis on these cooperatives. On the one hand, cooperatives' turnover contracts during the crisis, the effect is lower for elder cooperatives and varies across sectors. On the other hand, there is convergence towards the mean for the various generations of cooperatives. These findings are robust to alternative econometric specifications.

**Keywords:** Crisis, cooperatives, performance, production function

**JEL Classification:** C11, D22, L25, P13

**Etudier l'effet de la crise sur les coopératives : Une analyse bayésienne de la performance des coopératives artisanales françaises.**

**Résumé**

Cet article propose une analyse de la performance économique des coopératives artisanales pendant la période de crise. Ces coopératives ont comme caractéristiques particulières d'être des coopératives d'approvisionnement. Nous utilisons une base de données exhaustives des coopératives artisanales françaises (2004-2014). Nous estimons des modèles économétriques bayésiens translog afin de mettre en évidence l'impact de la crise sur les coopératives: D'une part la crise a un faible effet négatif sur le chiffre d'affaires, avec un effet atténuant du secteur et de l'âge. D'autre part il y a une convergence à la moyenne pour les différentes générations de coopératives. Ces résultats sont robustes à des spécifications économétriques alternatives.

**Mots-clés:** Crise, coopératives, performance, fonction de production

**Classification JEL:** C11, D22, L25, P13

## **Exploring the effect of crisis on cooperatives: A Bayesian performance analysis of French craftsmen cooperatives**

### **1. Introduction**

Due to their organization that promotes democracy and transparent management, cooperatives play an important role in building a more balanced economy (Stiglitz, 2009; Birchall, 2013). Hannan (2014) explains that cooperatives “are part of the market economy but possess a multi-dimensionality that enables them to perform in market economies while providing members with a range of tangible and intangible benefits that have the potential to enhance their socio-economic position and voice”. The resilience of cooperatives has been challenged during the recent economic crisis (Carini and Costa, 2013; Vieta, 2010).

Identifying the comparative advantages and disadvantages of *member-owned businesses*, Birchall (2013) states that the cooperative model may potentially be stronger than other businesses during economic recession. Several studies show better social and economic performances of cooperatives relative to other businesses (Cheney *et al.*, 2014; Lambriu and Petrescu, 2014; Benvivogli and Viviano, 2012; Zamagni, 2012; Costa and Carini, 2016; Carini and Carpita, 2014), but there are counter-examples and the crisis effect may vary by sector and with the market context (Birchall, 2013). According to Nunez-Nickel and Moyano-Fuentes (2004); Simons and Ingram (2003, 2004), agricultural cooperatives and kibbutzim are more sensitive to changes in the regulatory environment, but have a greater ability to adapt to macroeconomic fluctuations. Staber (1992) pointed out that agricultural marketing cooperatives are highly resistant to recessions.

While most of the literature focuses on the agricultural and financial sectors, as well as worker cooperatives, we study here the case of French craftsmen cooperatives, which have the distinctive feature of being supply cooperatives. This paper aims at understanding the economic performance of these cooperatives during crisis periods. Particular attention is paid to the age of the cooperative and the differences between sectors of activity. We are particularly interested in the resilience of French craftsmen cooperatives, namely how effective they are at surviving economic recession. We use exhaustive accounting data from the AMADEUS data base over the years 2004-2014. We show that the negative effect of the crisis depends on the sector and the date of creation of the cooperative. Economies of scale, estimated with elasticities, also present differences depending on the sector, the experience, and the size of craftsmen cooperatives. These analyses are important for public policy design since they indicate whether cooperatives need support on investment or labor expenses to improve their resilience. We use Bayesian analysis to compare different models underlying the impact of cooperatives characteristics, such as their location. State-of-the-art Bayesian regression techniques allow us to perform sensitivity

analyses, robustness checks (following Leamer (1983, 1985)), and to ensure the transparency of results. The present paper is the first study addressing this issue for craftsmen cooperatives, a type of cooperatives largely understudied in the literature.

The remainder of the article is organized as follows. The next section describes briefly the literature on the growth and resilience of cooperatives. Section 3 presents the empirical analysis, section 4 – the context and the data. In section 5, we report our main results, that show a low impact of the crisis on the economic performance of cooperatives, which diminishes with age and is smaller in some sectors, and a convergence toward the mean of effects specific to various generations of cooperatives. Alternative estimations and robustness checks are reported in appendix A. Finally, in section 6 we discuss the implications of our empirical findings.

## 2. Growth and resilience of cooperatives

It is interesting to note that the literature on craftsmen cooperatives in developed economies is sparse, while at the same time there is an extensive literature on the benefits of horizontal cooperation between SME (Small and Medium Enterprises) (Villa and Bruno, 2012). Ohnemus (1994) provides some empirical evidence on plumbing cooperatives in the USA; Lee and Mulford (1990) and Rawwas and Iyer (2013) document the activity of small business cooperatives in the Japanese retail and wholesale sector. In the context of transitional economies, cooperation may be a convenient strategy for small businesses to survive economy transformation and shocks (Cordell, 1993; Surubaru, 2012). Richomme (2001) and Lapayre *et al.* (2016) study various cases of French craftsmen cooperatives in the construction sector. Auvolat (2008) provides a comprehensive overview of the development of craftsmen cooperatives in France.

Supply cooperatives, that provide their members with intermediate inputs, emerged when investor-owned firms had a substantial monopoly power over small business enterprises (including farmers) in the supply of these inputs (Mikami, 2003). According to Rawwas and Iyer (2013) and Richomme (2001), these cooperatives have established trust among members, which has improved their overall performance.

One of the main objectives of the cooperative is social performance. Therefore, the way to measure the economic performance of cooperatives is subject to debate (Carini and Costa, 2013). Soboh *et al.* (2009) review the empirical studies on the performance of agricultural marketing cooperatives in different industries and countries, and list the employed performance measurements (pp. 458-459). They state that due to the inaccessibility of data, empirical studies failed to address globally all cooperatives' objectives, as well as to represent stakeholders' performance. The empirical literature uses mostly financial ratios, mathematical and statistical tools, and surveys to evaluate cooperatives' efficiency.<sup>1</sup> The economic performance of cooperatives

---

<sup>1</sup>Table A1 of appendix A.2, lists the variables and ratios used in recent works to apprehend, measure the



can be measured by comparing their turnover, total assets, profits, raw materials, output, or sales – in levels or in terms of evolution over a specific time period – against other firms (Carini and Carpita, 2014; Costa and Carini, 2016; Delboni and Reggiani, 2013; Jones and Mygind, 2002; Lambriu and Petrescu, 2014; Soboh *et al.*, 2012, 2014). Many studies measure social performance using employment data on the number of workers (Jones and Mygind, 2002; Lambriu and Petrescu, 2014; Delboni and Reggiani, 2013; Costa and Carini, 2016), on the number of full-time equivalent workers (Arando *et al.*, 2015), or on the number of employees by types of work contract (Carini and Carpita, 2014). Financial ratios characterize the performance of cooperatives by evaluating the efficiency of assets, the ability to invest or to face shocks. Soboh *et al.* (2011) uses financial ratios to show that while cooperatives are less profitable than investor-owned firms, they operate more efficiently and have a stronger financial position. Regarding marginal productivity and elasticities, Liu and Bailey (2013) found that large cooperatives have an advantage over small cooperatives in terms of economies of scale. Soboh *et al.* (2014) observe decreasing returns to scale for dairy processing cooperatives, as well as for investor-owned firms. Similarly, Fakhfakh *et al.* (2013) found that labor-managed firms use their inputs as efficiently as other firms.

This literature globally shows that cooperatives demonstrate a greater resilience than others types of enterprises. However, cooperatives may be less profitable than investor-owned firms, but operate more efficiently, present a stronger financial position (Soboh *et al.*, 2012, 2014), and have a stabilizing effect on employment with respect to shocks (Alves *et al.*, 2016; Delboni and Reggiani, 2013). The global characteristics of cooperatives' organization are the source of their resilience, since cooperative members join their resources to build collective networks and skills, improve their capability to innovate, and attract government funding (Borda-Rodriguez *et al.*, 2016). However, the cooperatives' resilience capacity differs across the sector of activity, the size and the geographic location of the cooperative (Costa and Carini, 2016; Fakhfakh *et al.*, 2013; Soboh *et al.*, 2014; Borda-Rodriguez *et al.*, 2016).

### **3. Empirical strategy: A Bayesian econometric approach to production function modelling**

We estimate a classical translog model, which is a more flexible production function than its special case (cobb-douglas). This production function has already been used for cooperatives: see Fakhfakh *et al.* (2013) for an application to French worker cooperatives, Maietta and Sena (2008, 2010) for an application to Italian producers cooperatives, or Soboh *et al.* (2012) for an application to dairy cooperatives.

For a cooperative  $i$  observed at a period  $t$ , a panel-data translog model is:

---

multidimensional performance of cooperatives.

$$\ln(O_{i;t}) = \alpha_i + \sum_{k=1}^K \beta_k \ln I_{i,t}^k + \sum_{k=1}^K \beta_{kk} (\ln I_{i,t}^k)^2 + \sum_{k=1 \neq h}^K \beta_{kht} \ln I_{i,t}^k \ln I_{i,t}^h + \mu_i + \epsilon_{i,t} \quad (1)$$

where  $O$  is the cooperative's output,  $I$  is a vector of  $k$  input variables,  $\mu$  and  $\epsilon$  are errors term, with  $\mu \sim N(0, \sigma)$  and  $\epsilon \sim N(0, \phi)$ .

As we suspect heterogeneous effects of crisis by age and sector, our benchmark model is:

$$\begin{aligned} \ln(O_{i;t}) = & \alpha_i + \sum_{k=1}^K \beta_k \ln I_{i,t}^k + \sum_{k=1}^K \beta_{kk} (\ln I_{i,t}^k)^2 + \sum_{k=1 \neq h}^K \beta_{kht} \ln I_{i,t}^k \ln I_{i,t}^h + \\ & \gamma_1 A_{i,t} + \gamma_2 C_{i,t} + \gamma_3 S_{i,t} + \gamma_4 A.C_{i,t} + \gamma_5 A.S_{i,t} + \gamma_6 C.S_{i,t} + \gamma_7 A.C.S_{i,t} + \mu_i + \epsilon_{i,t} \end{aligned} \quad (2)$$

with  $A$ ,  $C$  and  $S$  standing for age, crisis, and, respectively, sector.

There is no consensus in the literature regarding the objective function of a cooperative. It can be, for example, the utility or welfare of its members (as in Fulton and Giannakas (2001) or Giannakas and Fulton (2005)), or its profits with a patronage refunds payed to its members (as in Agbo *et al.* (2015)). Soboh *et al.* (2009) provide a more comprehensive review on the objective functions of cooperatives. As highlighted by the Conceptual Framework for Statistics on Cooperatives of the ILO (International Labor Organization) (Bouchard *et al.*, 2017), value added and profits have to be used with caution for marketing and supply cooperatives. For a marketing cooperative, producers' income is part of value added (patronage refunds or interests on social shares), on one the hand, and reflect a decrease in value added (payments for raw materials), on the other hand. For a supply cooperative, producer expenses may reflected different price strategies (combinations of price and patronage refunds). In our case, the available output is the cooperative's total turnover. The logarithm of total turnover is usually used in the literature as an acceptable proxy for economic performance (Fakhfakh *et al.*, 2013; Maietta and Sena, 2008, 2010; Gagliardi, 2009; Soboh *et al.*, 2012). Interviews with directors suggest also that patronage refunds and price strategies are relatively similar across all craftsmen cooperatives.

We choose a Bayesian modelling approach that takes into account uncertainty, sparse data, and moderate-sized sample (Gelman *et al.*, 2014a), especially with weakly informative priors (Gelman *et al.*, 2008). In order to conduct Bayesian model selection, we use the WAIC (Widely Applicable Information Criterion) and LOO (Leave-One-Out cross-validation) implemented in Vehtari *et al.* (2017). WAIC and LOO (Gelman *et al.*, 2014b) are fully Bayesian methods for estimating pointwise out-of-sample prediction accuracy from a fitted Bayesian model, using the log-likelihood evaluated at the posterior simulations of the parameter values.

Estimations are conducted with package Brms for R (Bürkner, 2017), that called Stan, a C++ program performing Bayesian inference and optimization (Gelman *et al.*, 2015).

#### 4. Context and data: Cooperatives in a craft industry under pressure

Since the 2008 crisis, the French craft industry faces a sharp slowdown. This business sector being directly dependent on public and private consumption, the consequences of the economic breakdown came into effect quickly and dramatically. Figure 1 shows the evolution of craft activity since 2009 (in quarterly dynamics). Figure 2 show the evolution of the number of employees of small businesses (less than 20 employees) in two crafts sectors (carpentry and plumbing) that we analyse in this paper.

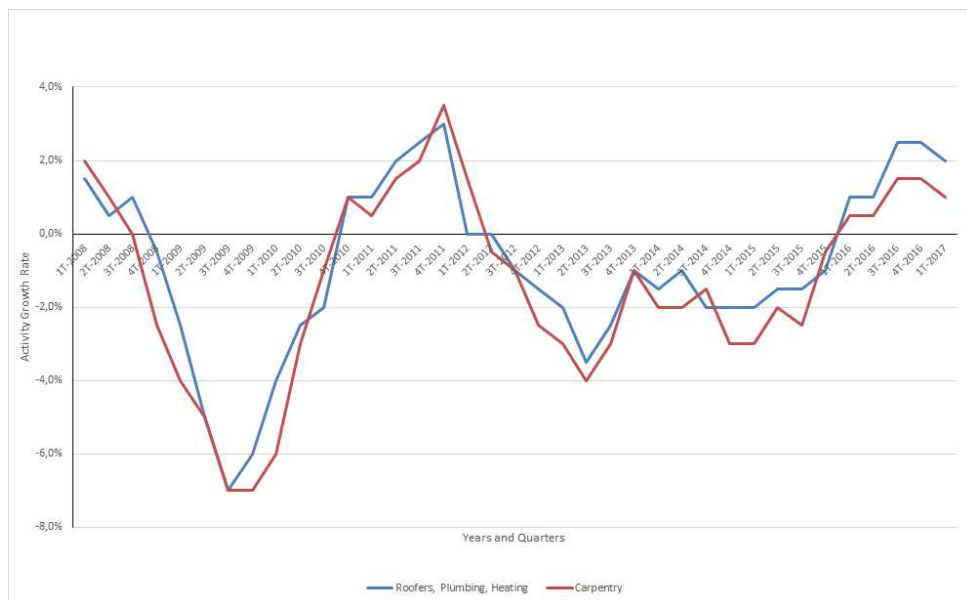
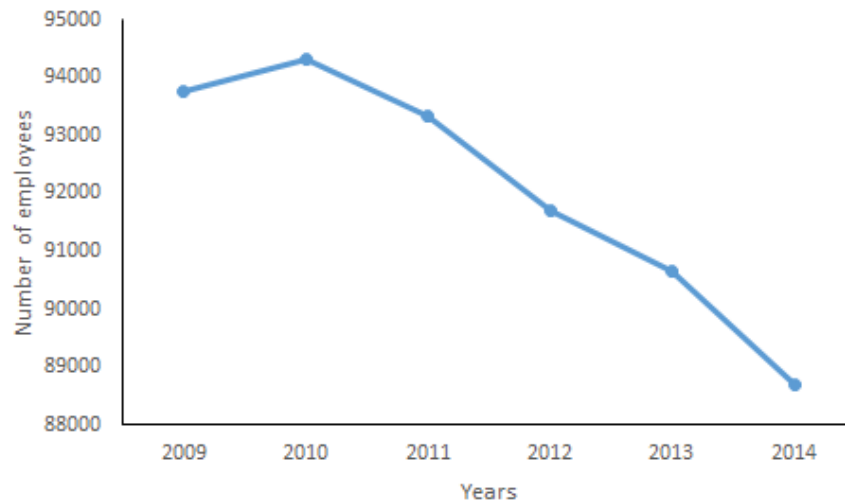


Figure 1: Activity growth rate, relative to the past quarter

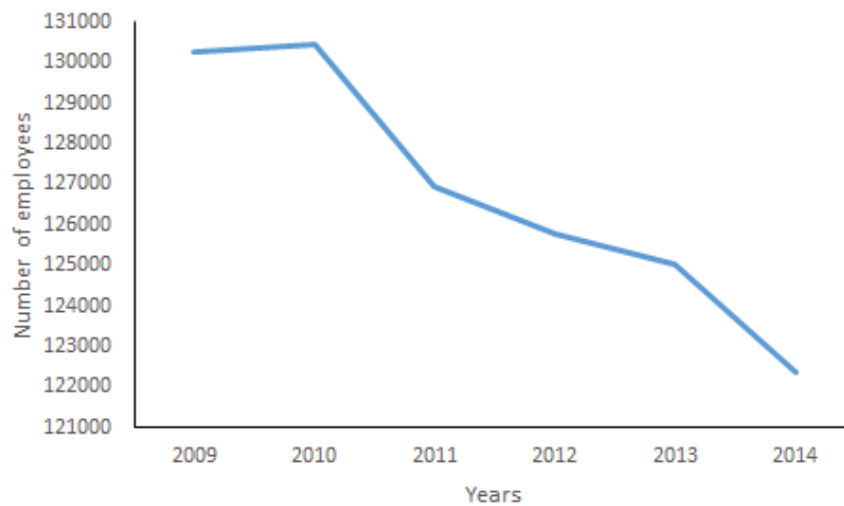
Source: CAPEB

The impact of the economic crisis appears dramatically in Figures 1 and 2. The business activity of craftsmen contracted, similarly to sector employment. In this context, we can ask if a craftsmen supply cooperative may be a reliable and efficient backstop for the members, as it was the case in transition economies (Surubaru, 2012). If craftsmen cooperatives are effective at surviving economic recession, it appears necessary to understand how this resilience effect is working.

We use an exhaustive dataset covering the 49 French craftsmen supply cooperatives (2004-2014), based on a matching of the directory of craftsmen cooperatives provided by the French Federation of Craftsmen Cooperatives and accounting data from the Amadeus/Orbis database.



(a) Carpentry sector



(b) Roofing, plumbing, and heating sector

Figure 2: Number of employees

Source: CAPEB, ACOSS 2014, corrected data, trainees and interns not included.  
Businesses with 20 employees or less.

Orbis is often viewed as an inaccurate, imprecise, unreliable source because of missing data. To address this issue, some authors use listwise deletion methods (complete case analysis) (Soboh *et al.*, 2011, 2012; Hirsch and Hartmann, 2014), that may produce biased estimates when there are informative drop-outs or missing not at random data (Seiler and Heumann, 2013).

Our analysis is not affected by these problems, although no comparison can be made with for-profit enterprises, for which no exhaustive directory is available. Note that all cooperatives have survived over the entire period, suggesting the absence of informative drop-outs and of survivor bias. The data was also checked for reliability and consistency using qualitative data responses obtained from ten interviews with cooperatives' directors.

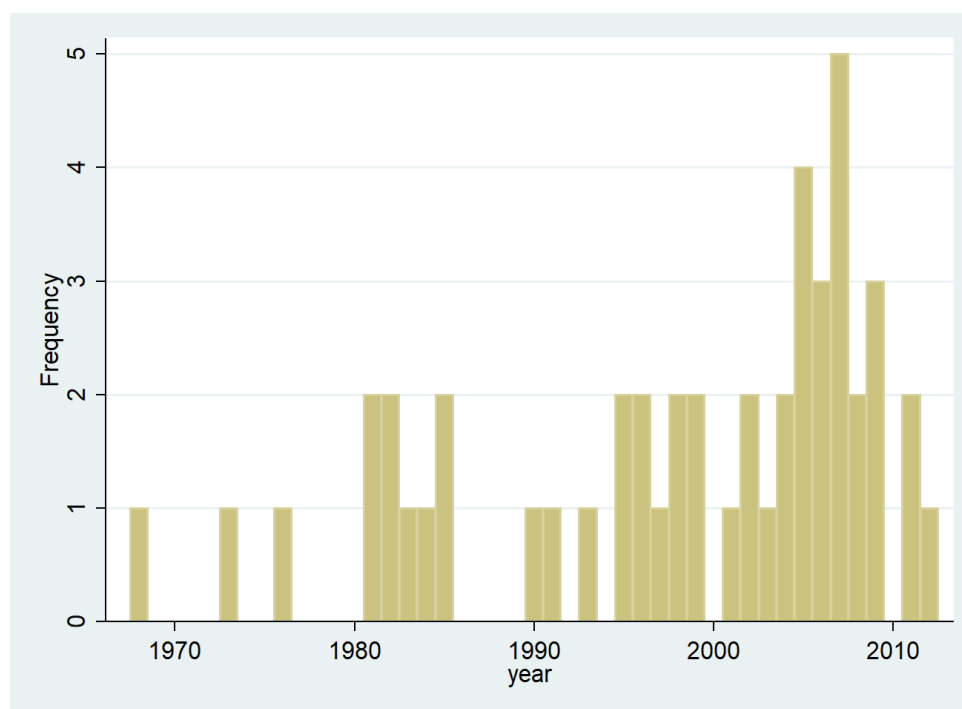


Figure 3: Number of cooperatives created by year

*Source: Authors' computations.*

The population of interest are the 49 craftsmen supply cooperatives. To increase the homogeneity of the analysed population of cooperatives, we do not take into account the bargaining and marketing cooperatives that exist in this industry. As shown in Figure 3, cooperatives in our panel were created between 1968 and 2002.<sup>2</sup> Accordingly, we have a balanced longitudinal database of our population between 2004 and 2014. A first interesting observation is that all the cooperatives survive during that period.

The average size of cooperatives is 8 to 10 millions € of turnover, with an average number of 100 members. These cooperatives are under the umbrella of ORCAB, the French Union of Craftsmen Cooperatives, an association created in 1990. Since its transformation into a consortium of cooperatives (a second level cooperative) in 1998, ORCAB plays an active role in the development of the network: creation of a collective brand, promotion of collective intangible investment, development of human capital (training of elected members), providing (by purchasing) the cooperatives with commodities to sell to their members and, furthermore, support the creation of new cooperatives in a more “top-down” approach (Billaudeau *et al.*, 2016). The success of this cooperation among cooperatives (Fici, 2015) lead to the creation of new cooperatives (half of cooperatives were created since 2000).

As discussed above, the dependent variables is the turnover (T), expressed in thousands of euros. The independent (explanatory) variables are, on one hand, the traditional inputs of the

<sup>2</sup>The 50th cooperative created in 2014 was not included in our study.

production function: intermediate consumption (IC), labor expenditure (LE) (including wages, salaries, and benefits), intangible assets (IA), and tangible assets (TA). All these variables are log-transformed. On the other hand, the following control variables are available: age (A), sector (S) and crisis (C). A is the age of the cooperative in years. Sector is a dummy variable, equal to 1 for the carpentry sector (nace4673: “Wholesale of wood, construction materials and sanitary equipment”) and 0 for the plumbing sector (nace4674: “Wholesale of hardware, plumbing and heating equipment and supplies”). The crisis variable is defined as a dummy. It takes the value 1 for 2008 and the following years and 0 otherwise.<sup>3</sup> Note that we can not use the number of members as an explanatory variable, as we have this information only the first year. As revealed by responses to interviews, there is a strong correlation between the number of a cooperative’s members and its turnover, as the population of craftsmen is relatively homogeneous. Tables A2 and A3 of appendix A.2 resume the descriptive statistics of the dependent and independent variables.

## 5. Results

### 5.1. Estimation

With weakly informative priors (Cauchy (0, 2.5) prior distributions, Gelman *et al.* (2008)), our benchmark model is based on 4 chains of 5,000 iterations, of which the first 2,500 are used as a warm-up to calibrate the sample, leading to a total of 10,000 posterior samples. Estimations along with all relevant tests are available on the website: <https://cooperatives.shinyapps.io/craftsmen/>. The Stan algorithm is highly efficient as the autocorrelation of Markov chains disappears quickly (see Figure 4 for the estimation of the log Posterior). We have, therefore, a large effective sample size (ESS).

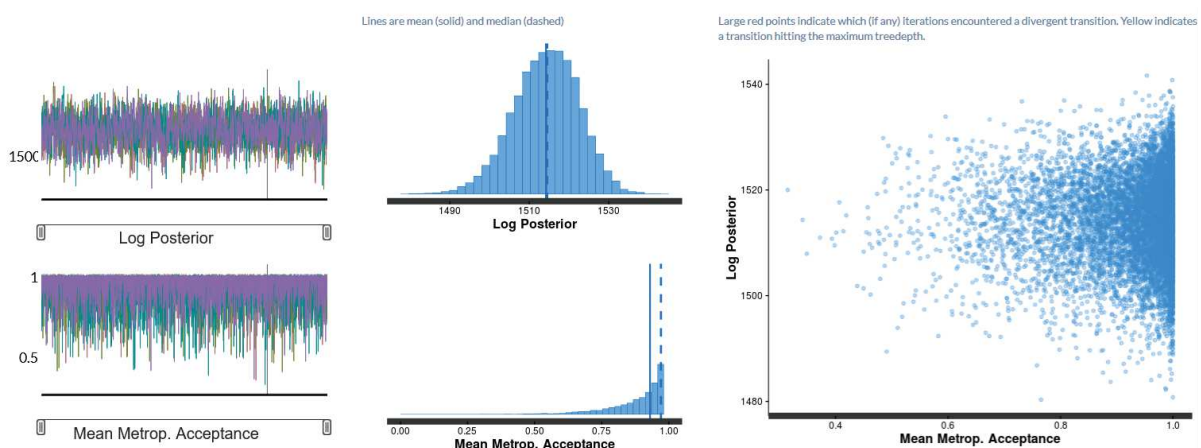


Figure 4: Diagnostics of the Log Posterior

<sup>3</sup>The use of alternative measures for crisis lead to similar results. These estimations can be provided upon request.

The estimation of the benchmark model is reported in Table 1. We estimate also alternative specifications as robustness checks. These estimations account for alternative functional forms, endogeneity, unobserved heterogeneity, and spatial correlations, and are reported in Tables A4 to A13 of appendix A.3. There is a negative effect of the crisis on performance. Note also that this effect decreases with cooperatives' age and is smaller in the carpentry sector. This result is revealed by the positive effect of the interaction of the crisis dummy with cooperative's age and with the carpentry sector dummy. The magnitude of the coefficient of a dummy variable cannot be interpreted directly in a regression with a log dependent variable as a semi-elasticity (Van Garderen and Shah, 2002). Therefore, we choose to interpret these estimates using various prediction of the economies of scale (see section 5.2).

Table 1: Results for the benchmark regression

Parameter	ESS	mean	s.d.	s.e. mean	2.5%	50%	97.5%
$\ln IC$	3293	1.235	0.067	0.001	1.103	1.235	1.364
$\ln LE$	2773	-0.165	0.060	0.001	-0.280	-0.165	-0.048
$\ln IA$	4934	-0.028	0.012	0.000	-0.052	-0.028	-0.005
$\ln TA$	4491	0.003	0.016	0.000	-0.029	0.003	0.035
$\ln IC^2$	2600	-0.039	0.011	0.000	-0.060	-0.039	-0.018
$\ln LE^2$	3196	-0.013	0.011	0.000	-0.034	-0.013	0.008
$\ln IA^2$	10000	0.001	0.001	0.000	-0.000	0.001	0.002
$\ln TA^2$	6544	0.002	0.001	0.000	0.000	0.002	0.003
$\ln IC \times \ln LE$	2701	0.053	0.021	0.000	0.012	0.054	0.094
$\ln IC \times \ln IA$	3548	0.004	0.003	0.000	-0.003	0.004	0.011
$\ln IC \times \ln TA$	4369	0.006	0.004	0.000	-0.003	0.006	0.014
$\ln LE \times \ln IA$	4263	0.000	0.003	0.000	-0.006	0.000	0.007
$\ln LE \times \ln TA$	5223	-0.011	0.004	0.000	-0.018	-0.011	-0.004
$\ln IA \times \ln TA$	10000	-0.002	0.001	0.000	-0.004	-0.002	-0.001
S (carpentry sector)	2564	-0.033	0.008	0.000	-0.050	-0.033	-0.017
C (crisis: 2008-2014)	5210	-0.018	0.005	0.000	-0.027	-0.018	-0.008
A (cooperative age)	4285	-0.001	0.000	0.000	-0.002	-0.001	-0.000
$S \times C$	4937	0.019	0.007	0.000	0.006	0.019	0.032
$S \times A$	4214	0.001	0.001	0.000	0.000	0.001	0.002
$C \times A$	5849	0.001	0.000	0.000	0.000	0.001	0.001
$S \times C \times A$	5758	-0.001	0.000	0.000	-0.002	-0.001	-0.000
Constant	5370	-0.190	0.150	0.002	-0.482	-0.189	0.107
$\phi$	2597	0.014	0.002	0.000	0.011	0.014	0.019
$\sigma$	10000	0.014	0.001	0.000	0.013	0.014	0.016

Note: ESS: Effective Sample Size, s.d.: standard deviation, s.e. mean: standard error of the mean



## 5.2. Economies of scale before and after the crisis

Economies of scale and elasticities may be calculated at the mean, the median, or at various representative values (see (Kumbhakar *et al.*, 2015)). We estimate additional models on distinct subsets of the population (before and after the crisis).

In Table 2 we report the mean using a Bayesian test, which is just the posterior probability under the hypothesis against its alternative (Gelman *et al.*, 2014a). Economies of scale are equal to 1.66, with a high contribution of intermediate consumption (1.52) and a non significant effect of assets. This estimation is higher than in previous studies on cooperatives. For example, Maietta and Sena (2008) found constant economies of scale and an elasticity of intermediate consumption equal to 0.82 for producer cooperatives. The economies of scale are decreasing (0.62) in the case of European dairy cooperatives (Soboh *et al.*, 2014). Finally, we can see that the economies of scale decreased dramatically after the crisis.

Table 2: Economies of scale and elasticities

	Full sample		Before the crisis		After the crisis	
	estimates	s.e.	estimates	s.e.	estimates	s.e.
<i>Elasticities</i>						
IC (Intermediary Consumption)	1.520	0.125	1.988	0.199	0.807	0.240
LE (Labor Expenditure)	0.153	0.068	0.325	0.114	-0.106	0.119
IA (Intangible Assets)	-0.002	0.001	-0.002	0.003	0.000	0.001
TA (Tangible Assets)	-0.013	0.005	-0.033	0.009	-0.009	0.006
<i>Economies of Scale</i>						
	1.658	0.173	2.278	0.276	0.691	0.324

In Table 3, we estimate the impact of the 2008 crisis on performance for cooperatives of different ages from the two sectors, with other independent variables fixed at the mean. The marginal impact of crisis is relatively low in all cases, suggesting a high resilience of cooperatives during crisis periods. Carpentry sector cooperatives suffer less from the crisis than plumbing cooperatives.

Although the impact of the crisis is small, we note that younger cooperatives seem to be more affected than their older counterparts (Table 2). Accordingly, there is a *convergence towards the mean* for cooperatives of different age during the crisis, as illustrated in Figure 5, where we report the predictions by cooperatives' age and sector of activity. This result holds especially for cooperatives from the plumbing sector. As discussed in section 5.1, this empirical finding may be linked to the different dynamic of the creation of various generations of cooperatives.



Table 3: Impact of age, sector and crisis on cooperatives' performance

Age of the cooperative	C	Plumbing sector				Carpentry sector			
		Median	5 % quantile	90 % quantile	Crisis impact	Median	5 % quantile	90 % quantile	Crisis impact
$\bar{A} - 1 \text{ s.d.}$	0	8901.78	8664.97	9093.35	ref	8475.67	8255.52	8649.59	ref
$\bar{A} - 1 \text{ s.d.}$	1	8678.04	8443.75	8865.29	-2.51%	8614.31	8393.45	8784.08	1.64%
$\bar{A} - 5 \text{ years}$	0	8892.85	8660.34	9075.85	ref	8530.59	8316.58	8698.38	ref
$\bar{A} - 5 \text{ years}$	1	8644.04	8416.32	8827.25	-2.80%	8565.81	8339.01	8748.46	0.41%
$\bar{A}$	0	8703.81	8454.96	8900.80	ref	8598.14	8375.89	8774.44	ref
$\bar{A}$	1	8737.06	8494.64	8933.13	0.38%	8546.02	8319.15	8731.88	-0.61%
$\bar{A} + 5 \text{ years}$	0	8590.13	8369.55	8764.89	ref	8422.87	8211.38	8593.06	ref
$\bar{A} + 5 \text{ years}$	1	8819.45	8585.79	9005.92	2.67%	8719.16	8490.55	8893.89	3.52%
$\bar{A} + 1 \text{ s.d.}$	0	8515.21	8289.49	8687.31	ref	8538.79	8289.25	8732.44	ref
$\bar{A} + 1 \text{ s.d.}$	1	8710.58	8473.60	8902.60	2.29%	8548.10	8326.74	8725.33	0.11%

Note:  $C=1$  denotes the crisis period (2008-2014), 1 s.d. is one standard deviation of cooperatives' age. Cooperatives' performance is measured by their turnover in K €.

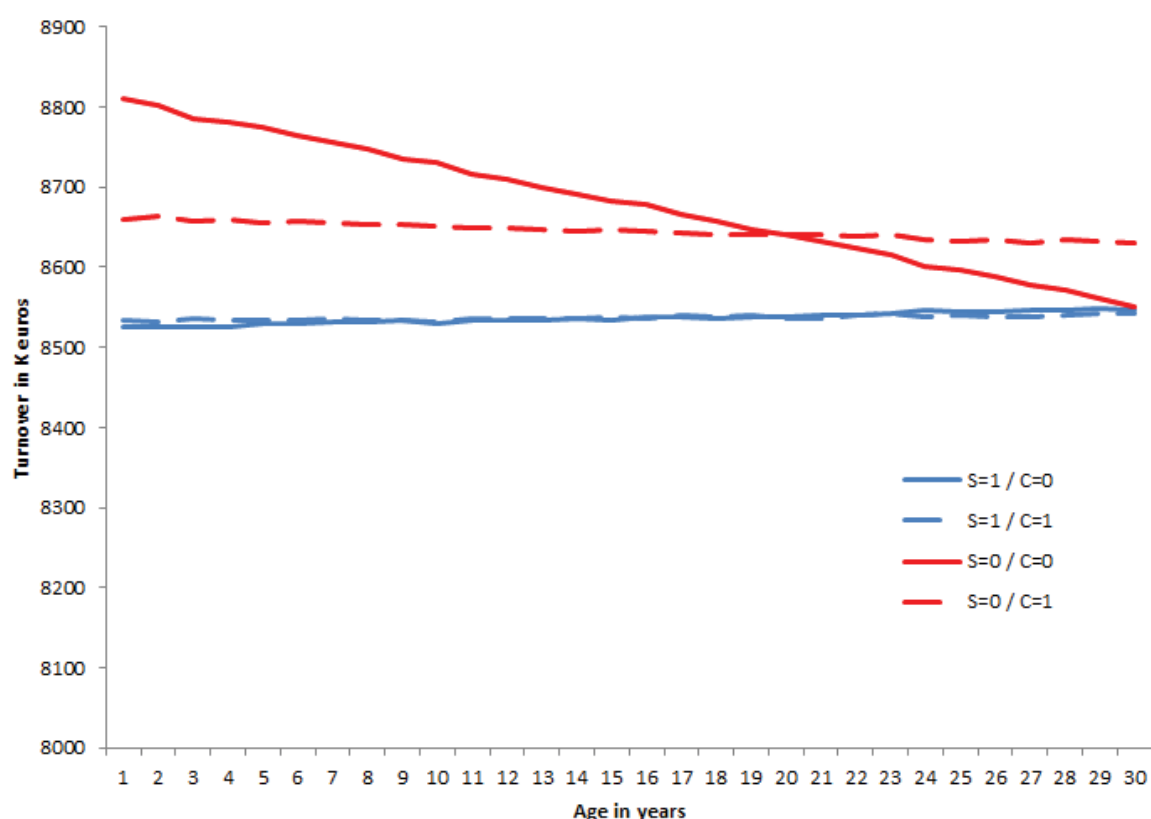


Figure 5: Marginal effect of the crisis on cooperatives' performance, by age and sector

## 6. Discussion and conclusion

Using an exhaustive database, we underline the presence of high economies of scale for the craftsmen cooperatives. Regarding agricultural cooperatives (e.g. Liu and Bailey (2013); Soboh *et al.* (2014)), the magnitude of the returns to scale show that the best strategy to improve the cooperative's competitive position is to increase its size. We observe a weak growth and a strong resilience of craftsmen cooperatives, which questions the alleged inexorable trade-off between democracy and efficiency (Jones and Kalmi, 2012). Previous studies on cooperatives find a decreasing relationship between size and social capital (Nilsson *et al.*, 2012; Feng *et al.*, 2016). This suggests that in large cooperatives profits from economies of scale and scope may be outweighed by weak democracy governance, widespread free-riding and loss of solidarity. Craftsmen cooperatives, as small grassroots organizations, seem to be the first step of growth described by Nilsson *et al.* (2012), where larger size increases economic performance without drain of social capital.

According to Malikov *et al.* (2017), the incentive to grow in size may be fueled not only by present economies of scale, but also by economies of diversification. Economies of diversification especially concern cooperatives that are not for profit maximizers, but rather seek to maximize service provision (in terms of quantity, price, and variety) to their members. As cooperatives are able to secure the demand for a more diversified scope of services, larger cooperative naturally have a higher incentive to grow in order to capitalize on economies of diversification.

We investigate how the 2008 crisis affected the French cooperatives in the carpentry and plumbing sectors. We find that, during the crisis the decrease in cooperatives' turnover was smaller in the carpentry sector. This points to a higher resilience of cooperatives from this sector in comparison to other components of the social economy (Bouchard and Rousselière, 2016; Pape *et al.*, 2016). Bouchard and Rousselière (2016) highlights a split in the population of the Montreal social economy between a component characterized by low growth and low hazard and a component with high growth and high hazard. According to our results, craftsmen cooperatives seem to belong to the former type.

We also underline a convergence effect or *a regression toward the mean*, but of a different nature than the one highlighted in Hart (2000). Young craftsmen cooperatives have a higher turnover than the older ones, but during the crisis they face a stronger decrease in income. This suggests that older cooperatives have a higher capacity to adapt to a changing economic context. They benefit more from economies of learning, while younger cooperatives may face the *liability of newness* due to their immature social organization (Brüderl and Schusseler, 1990). This finding is in line with the heterogenous responses towards the crisis suggesting by the theoretical literature on SME (Cucculelli and Peruzzi, 2018).

An explanation based on the concept of commitment can also be provided. Commitment is defined by Fulton (1999) and Fulton and Giannakas (2001) as the preference of cooperative members to patronize a cooperative even when the cooperative's price or service is not as good as that provided by an investor-owned firm. Therefore, member commitment is "a sort of glue that allows membership and business volume to be maintained even as trade becomes more fluid and barriers to reorganization are broken down" (Fulton, 1999, p. 418). Younger cooperatives were created from scratch in a "top-down" way (with the support of the federation which tries to develop the cooperative system) (Auvolat, 2008; Billaudeau *et al.*, 2016). Because of their weaker link with their members, they may suffer more from the crisis. The few empirical papers describing "top-down cooperatives" provide mixed evidence on this issue (Kurakin and Visser, 2017). On the other hand, older cooperatives (developed before the federation) were created in a "bottom-up" manner at grass-root level. Their members have a deeper commitment, which may explain not only why they suffer less during the crisis, but also why they continue to grow. Commitment acts as a *glue* and determines members to be more supportive of their cooperative, or to get more involved in its governance during an economic crisis. Cechin *et al.* (2013) explain how democracy improves commitment, while control, monitoring, and increased formalization of agreements negatively affect members' commitment and the cooperative's performance.

Furthermore, craftsmen cooperatives differ from the agricultural ones from the point of view of the business model adopted by their members. Auvolat (2008) explains that craftsmen face an individual and local demand, and that their economic performance is less related to suppliers than in the case of farmers. Another distinctive feature of craftsmen is their suspicion of democracy with delegation, the rejection of gigantism and depersonalization. If craftsmen cooperatives, especially the oldest ones, choose not to grow in spite of the important economies of scale they could achieve, it may be due to the fact that members consider commitment and democracy more important for their performance than economic efficiency. Billaudeau *et al.* (2016), presenting a special case of a French craftsmen cooperative, demonstrated that this type of governance, emphasizing strong relationships and trust between the members and the cooperative and among members, leads to a success adaptation in a crisis period. Moreover, the optimal size of the cooperative may be different for craftsmen and farmers, as the competition between members is not of the same nature. Craftsmen face a local demand and the competitive advantage may consist of workers' know-how, while farmers may face a global market with a competition based on quantity and global prices (in which they may cooperate) and a local market (in which they compete) (Agbo *et al.*, 2015). Finally, the need of craftsmen for direct democracy and autonomy, coupled with commitment as a competitive advantage brought to the cooperative, lead to a special strategy. Craftsmen cooperatives follow the "low growth, low hazard" model in spite of large economies of scale and of our results proving them efficient during crises.

## References

- Agbo, M., Rousselière, D., and Salanié, J. (2015). Agricultural Marketing Cooperatives with Direct Selling: A Cooperative Non Cooperative Game. *Journal of Economic Behavior and Organization*, 109:56–71.
- Alves, G., Burdin, G., and Dean, A. (2016). Workpkace democracy and job flows. *Journal of Comparative Economics*, 44:258–271.
- Arando, S., Gogo, M., and Jones, D. (2015). Efficiency in employee-owned enterprises: An econometric case study of mondragon. *ILR Review*, 68(2):398–425.
- Arellano, M. (2003). *Panel Data Econometrics*. Oxford University Press, Oxford.
- Arellano, M. and Bond, S. (1991). Some tests of specification for panel data: Monte carlo evidence and an application to employment equations. *Review of Economic Studies*, 58:277–297.
- Auvolat, M. (2008). Les coopératives d’artisan: Du métier au développement coopératif. *Revue internationale de l’économie sociale*, (307):58–66.
- Bentivogli, C. and Viviano, E. (2012). Changes in the italian economy: The cooperatives. *Bank of Italy Occasional Paper*, (113).
- Billaudeau, V., Poutier, E., and Martineau, B. (2016). *La singularité du mode de gouvernance des coopératives d’achats des artisans: Le cas GMB dans le réseau national ORCAB résis-tant à la crise*. Sommet international des coopératives, Lévis.
- Birchall, J. (2013). The potential of cooperatives during the current recession; theorizing comparative advantage. *Journal of Entrepreneurial and Organizational Diversity*, 2(1):1–22.
- Borda-Rodriguez, A., Johnson, H., Shwa, L., and Vicari, S. (2016). What makes rural co-operatives resilient in developing countries? *Journal of International Development*, 28:89–111.
- Bouchard, M., Le Guernic, M., and Rousselière, D. (2017). *Conceptual Framework on Measurement of Cooperatives and its Operationalization*. International Labor Organization, Geneva.
- Bouchard, M. J. and Rousselière, D. (2016). Do hybrid organizational forms of the social economy have a greater chance of surviving? an examination of the case of montreal. *VOLUNTAS: International Journal of Voluntary and Nonprofit Organizations*, 27(4):1894–1922.
- Brüderl, J. and Schusseler, R. (1990). Organizational mortality: the liabilities of newness and adolescence. *Administrative Science Quarterly*, 35(3):530–547.

- Bürkner, P.-C. (2017). brms: An r package for bayesian multilevel models using stan. *Journal of Statistical Software*, 80(1):1–28.
- Burnham, K. and Anderson, D. (2004). Multimodel inference. understanding aic and bic in model selection. *Sociological Methods and Research*, 33(2):261–304.
- Carini, C. and Carpita, M. (2014). The impact of the economic crisis on italian cooperatives in the industrial sector. *Journal of Co-operative Organization and Management*, 2:14–23.
- Carini, C. and Costa, E. (2013). Exploring the performance of social cooperatives during the economic crisis: The italian case. *Euricse Working Paper*, (59).
- Cechin, A., Bijman, J., Pascucci, S., and Omta, O. (2013). Decomposing the member relationship in agricultural cooperatives: Implications for commitment. *Agribusiness*, 29(1):39–61.
- Cheney, G., Cruz, I., Peredo, A., and Nazareno, E. (2014). Worker cooperatives as an organizational alternative: challenges, achievements and promise in business governance and ownership. *Organization*, 21(5):591–603.
- Cordell, V. (1993). Effects of public policy on marketing channels in transitional economies: The case of poland. *Journal of Macromarketing*, : 20–32.
- Costa, E. and Carini, C. (2016). Northern and southern italian social cooperatives during the economic crisis: A multiple factor analysis. *Service Business*, 10(2):369–392.
- Cucculelli, M. and Peruzzi, V. (2018). Post-crisis firm survival, business model changes, and learning: evidence from the italian manufacturing industry. *Small Business Economics*, : first online.
- Delboni, F. and Reggiani, C. (2013). Cooperative firms and the crisis: Evidence from some italian mixed oligopolies. *Annals of Public and Cooperative Economics*, 84(4):383–397.
- Emvalomatis, G. (2012). Adjustment and unobserved heterogeneity in dynamic stochastic frontier models. *Journal of Productivity Analysis*, 37:7–16.
- Fakhfakh, F., Perotin, V., and Gago, M. (2013). Productivity, capital, and labor in labor-managed and conventional firms: An investigation on french data. *Industrial and Labor Relations Review*, 65(4):847–879.
- Feng, L., Friis, A., and Nilsson, J. (2016). Social capital among members in grain marketing cooperatives of different sizes. *Agribusiness*, 32(1):113–126.
- Fici, A. (2015). Cooperation among cooperatives in italian and comparative law. *Journal of Entrepreneurial And Organizational Diversity*, 4(2):64–97.
- Fulton, M. (1999). Cooperatives and member commitment. *Finnish Journal of Business Economics*, 4:418–437.

- Fulton, M. and Giannakas, K. (2001). Organizational commitment in a mixed oligopoly: agricultural cooperatives and investor-owned firms. *American Journal of Agricultural Economics*, 83:1258–1265.
- Gagliardi, F. (2009). Financial development and the growth of cooperative firms. *Small Business Economics*, 32:439–464.
- Gelman, A., Carlin, J., Stern, H., Dunson, D., Vehtari, A., and Rubin, D. (2014a). *Bayesian Data Analysis, Third Edition*. CRC Press, Boca Raton.
- Gelman, A., Hwang, J., and Vehtari, A. (2014b). Understanding predictive information criteria for bayesian models. *Statistics and Computing*, 24:997–1016.
- Gelman, A., Jakulin, A., Pittau, M., and Su, Y. (2008). A weakly informative default prior distribution for logistic and other regression models. *The Annals of Applied Statistics*, 2(4):1360–1383.
- Gelman, A., Lee, D., and Guo, J. (2015). Stan: A probabilistic program for bayesian inference and optimization. *Journal of Educational and Behavioral Statistics*, 40(5):530–543.
- Giannakas, K. and Fulton, M. (2005). Process innovation activity in mixed oligopoly: The role of cooperatives. *American Journal of Agricultural Economics*, 87(2):406–422.
- Giannakas, K., Tran, K., and Tzouvelekas, V. (2003). On the choice of functional form in stochastic frontier modeling. *Empirical Economics*, 28:75–100.
- Greene, W. (2005). Fixed and random effects in stochastic frontier models. *Journal of Productivity Analysis*, 23(1):7–32.
- Griffiths, W. and Hajargasht, G. (2016). Some models for stochastic frontiers with endogeneity. *Journal of Econometrics*, 190:341–348.
- Hannan, R. (2014). Good co-operative governance: the elephant in the room with rural poverty reduction. *Journal of International Development*, 26(5):701–712.
- Hart, P. (2000). Theories of firms growth and the generation of jobs. *Review of Industrial Organization*, 17:229–248.
- Hirsch, S. and Hartmann, M. (2014). Persistence of firm-level profitability in the european dairy processing industry. *Agricultural Economics*, 45:53–63.
- Hsiao, C., Pesaran, M. H., and Tahmiscioglu, A. K. (2002). Maximum likelihood estimation of fixed effects dynamic panel data models covering short time periods. *Journal of Econometrics*, 109:107–150.
- Jones, D. and Kalmi, P. (2012). Economies of scale versus participation: A co-operative dilemma? *Journal of Entrepreneurial and Organizational Diversity*, 1(1):37–64.



- Jones, D. C. and Mygind, N. (2002). Ownership and productive efficiency: Evidence from estonia. *Review of Development Economics*, 6(2):284–301.
- Kumbhakar, S. C., Wang, H.-J., and Horncastle, A. (2015). *A Practitioner's Guide to Stochastic Frontier Analysis Using Stata*. Cambridge University Press.
- Kurakin, A. and Visser, O. (2017). Post-socialist agricultural cooperatives in russia: a case study of top-down cooperatives in the belgorod region. *Post-Communist Economies*, 29(2):158–181.
- Lambru, M. and Petrescu, C. (2014). Surviving the crisis: Worker cooperatives in romania. *Organization*, 21(5):730–745.
- Lapayre, N., Pierson, F., and Rymeyko, K. (2016). Etude de la coopération au sein d'une coopérative artisanale. *Revue Interdisciplinaire Management, Homme & Entreprise*, 2016/3(22):3–28.
- Leamer, E. (1983). Let's take the con out of econometrics. *American Economic Review*, 73(1):31–43.
- Leamer, E. (1985). Sensitivity analyses would help. *American Economic Review*, 75(3):308–313.
- Lee, M. and Mulford, C. (1990). Reasons why japanese small businesses form cooperatives. *Journal of small business management*, 3(28):62–72.
- Lewbel, A. (2012). Using heteroscedasticity to identify and estimate mismeasured and endogenous regressor models. *Journal of Business and Economic Statistics*, 30(1):67–80.
- Liu, J. and Bailey, D. (2013). Examining economies of scale for farmer cooperatives in china's shanxi province. *Journal of Rural Cooperation*, 41(2):147–175.
- Maietta, O. W. and Sena, V. (2008). Is competition really bad news for cooperatives? some empirical evidence for italian producers' cooperatives. *Journal of Productivity Analysis*, 29:221–233.
- Maietta, O. W. and Sena, V. (2010). Financial constraints and technical efficiency: Some empirical evidence for italian producers' cooperatives. *Annals of Public and Cooperative Economics*, 81(1):21–38.
- Malikov, E., Zhao, S., and Kumbhakar, S. (2017). Economies of diversification in the us credit union sector. *Journal of Applied Econometrics*, 32(7):1329–1347.
- McElreath, R. (2016). *Statistical Rethinking*. CRC, Boca Raton.
- Mikami, K. (2003). Market power and the form of enterprise: Capitalist firms, worker-owned firms and consumer cooperatives. *Journal of Economic Behavior and Organization*, 52:533–552.

- Mishra, V. and Smyth, R. (2015). Estimating returns to schooling in urban china using conventional and heteroskedasticity-based instruments. *Economic Modelling*, 47:166–173.
- Nilsson, J., Svendsen, G., and Svendsen, G. (2012). Are large and complex agricultural cooperatives losing their social capital? *Agribusiness*, 28(2):187–204.
- Nunez-Nickel, M. and Moyano-Fuentes, J. (2004). Ownership structure of cooperatives as an environmental buffer. *Journal of Management Studies*, 41(7):1131–1152.
- Ohnemus, S. (1994). A locational analysis of pumbing cooperatives. Master of Science in Real Estate Development, MIT.
- Pape, U., Chaves-Avila, R., Pahl, J., Petrella, F., Pielinski, B., and Savall-Morera, T. (2016). Working under pressure: Economic recession and third sector development in europe. *International Journal of Sociology and Social Policy*, 36(7/8):547–566.
- Park, T. and Casella, G. (2008). The bayesian lasso. *Journal of the American Statistical Association*, 103(482):681–686.
- Piironen, J. and Vehatari, A. (2015). Comparison of bayesian predictive methods for model selection. *Statistics and Computing*, : 1–25.
- Rawwas, M. and Iyer, K. (2013). How do small firms possibly survive? *International Business Review*, 22:687–698.
- Richomme, K. (2001). De la cotraitance au management relationnel : Le cas d’une coopérative artisanale du secteur du bâtiment. *Revue internationale P.M.E.*, (142):109–131.
- Roodman, D. (2009). A note on the theme of too many instruments. *Oxford Bulletin of Economics and Statistics*, 71(1):135–158.
- Santias, F. R., Cadrso-Suarez, C., and Rodriguez-Alvarez, M. X. (2011). Estimating hospital production functions through flexible regression models. *Mathematical and Computer Modelling*, 54:1760–1764.
- Seiler, C. and Heumann, C. (2013). Microdata imputations and macrodata implications: Evidence from the ifo business survey. *Economic Modelling*, 35:722–733.
- Simons, T. and Ingram, P. (2003). Enemies of the state: Interdependence between institutional forms and the ecology of the kibbutz, 1910-1997. *Administrative Science Quarterly*, 44:592–621.
- Simons, T. and Ingram, P. (2004). An ecology of ideology: Theory and evidence from four populations. *Industrial and Corporate Change*, 13(1):33–59.
- Soboh, R., Lansink, A., Giesen, G., and van Dijk, A. (2009). Performance Measurement of the Agricultural Marketing Cooperatives: The Gap between Theory and Practice. *Review of Agricultural Economics*, 31(3):446–469.



- Soboh, R., Lansink, A., and van Dijk, A. (2011). Distinguishing dairy cooperatives from investor-owned firms in europe using financial indicators. *Agribusiness*, 27(1):34–46.
- Soboh, R., Lansink, A., and van Dijk, A. (2012). Efficiency of cooperatives and investor owned firms revisited. *Journal of Agricultural Economics*, 63(1):142–157.
- Soboh, R., Lansink, A., and van Dijk, A. (2014). Efficiency of european dairy processing firms. *NJAS - Wageningen Journal of Life Sciences*, 70-71:53–59.
- Staber, U. (1992). Organizational interdependence and organizational mortality in the cooperative sector: A community ecology perspective. *Human Relations*, 45(11):1191–1211.
- Stiglitz, J. (2009). Moving beyond market fundamentalism to a more balanced economy. *Annals of Public and Cooperative Economics*, 80(3):345–360.
- Surubaru, A. (2012). Les producteurs roumains de l’habillement à la recherche de clients: une analyse sociologique des rencontres d’affaires. *Sociologie du Travail*, 54:457–474.
- Thompson, G. (1988). Choice of flexible functional forms:review and appraisal. *Western Journal of Agricultural Economics*, 13(2):169–183.
- Van Garderen, K. and Shah, C. (2002). Exact interpretation of dummy variables in semilogarithmic equations. *The Econometrics Journal*, 5(1):149–159.
- Vehtari, A., Gelman, A., and Gabry, J. (2017). Practical Bayesian model evaluation using leave-on-out cross validation and WAIC. *Statistics and Computing*, 27(5):1413–1432.
- Vieta, M. (2010). The social innovations of autogestion in argentina’s worker-recuperated enterprises: Cooperatively reorganizing productive life in hard times. *Labor Studies Journal*, 35(3):295–321.
- Villa, A. and Bruno, G. (2012). Promoting sme cooperative aggregations: main criteria and contractual models. *International Journal of Production Research*, 51(23-24):7439–7447.
- Wood, S. (2006). *Generalized Additive Models*. CRC Press, Boca Raton.
- Wooldridge, J. (2010). *Econometric Analysis of Cross Section and Panel Data*. MIT Press, Cambridge.
- Yao, Y., Vehtari, A., Simpson, D., and Gelman, A. (2018). Using stacking to average bayesian predictive distributions. *Bayesian Analysis*, 13(3):917–1003.
- Zamagni, V. (2012). Interpreting the roles and economic importance of cooperative enterprises in a historical perspective. *Journal of Entrepreneurial and Organizational Diversity*, 1(1):21–36.

## **A. Appendix**

### **A.1. Measures of cooperatives' performance**

Table A1: Measures of cooperatives' performance

Study	Economic dimensions	Employment dimensions	Financial ratios	Survey	Sector
Arando <i>et al.</i> (2015)	Real sales of stores	Full-time equivalent workers	Worker cooperatives (Eroki and Gespa stores)		
	Market index of the area served by store	Employee attitude index			
Carini and Carpita (2014)	Turnover	Employees by type of contract		Survey:	Industry
	Profits	Temporary workers		Investments internationalization	
		Changes in employment by sector of activity		Innovation and RD	
		Forecast about employment			
Costa and Carini (2016)	Turnover	Permanent and fixed-term employees	Turnover/Operating Cost	Multiple Analysis	Social Cooperatives
	Total Assets	Employees per coop	Profit (loss) / Turnover Equity/Total Assets Fixed Assets/Total Assets		
Delboni and Reggiani (2013)	Sales	Employment			Production Cooperatives
	Profits				Focus on constructions industry
	Equity				

(Continued from previous page)

Study	Economic dimensions	Employment dimensions	Financial ratios	Survey	Sector
Fakhfakh <i>et al.</i> (2013)	Value-Added of Firm		Returns to Scale		Workers Cooperatives
Jones and Mygind (2002)	Profits	Employment No of workers	Elasticity of output with respect to capital and labor		660 Estonian Firms (by ownership)
	Sales				
	Assets				
	Output				
Lambru and Petrescu (2014)	Income	Employees	Worker Cooperative in profit	Number of Coop	Workers Cooperatives
	Surplus			Numbers of Members	
	Deficit				
Liu and Bailey (2013)			Growth rate (year-over-year growth in the cooperative's assets)		
			Economies of scale		
Nunez-Nickel and Moyano-Fuentes (2004)				Firm Failure	Agricultural Cooperatives (Olive oil)
Soboh <i>et al.</i> (2011)			Profit before interest and taxes / total assets		Dairy Firms
			Material cost / Total asset		
			Total debt / total asset		
			Long-term debt / total equity		

(Continued from previous page)

Study	Economic dimensions	Employment dimensions	Financial ratios	Survey	Sector
			Currents assets / current liabilities		
			Turnover / fixed assets		
			Turnover / inventories		
			$\frac{[\text{NonissuedEquity}(y+1) - \text{NonissuedEquity}(y)]}{\text{NonissuedEquity}(y)}$		
Soboh <i>et al.</i> (2012)	Total Turnover				Dairy Processing Firms
	Fixed Assets				
	Raw Materials				
	Labour				
Soboh <i>et al.</i> (2014)	Total Turnover		Efficiency relative to production frontiers		Dairy Cooperatives
	Output		Elasticity of scale		
	Fixed Assets				
	Raw Materials				
	Labor				

**A.2. Descriptive statistics**

Table A2: Summary statistics

Variable	Description	Mean	Std. Dev.	N
$\ln T$	$\ln$ Turnover	9.061	0.974	490
$\ln IC$	$\ln$ Intermediate Consumption	8.855	0.978	490
$\ln LE$	$\ln$ Labor Expenditure	6.68	0.98	490
$\ln IA$	$\ln$ Intangible Assets	1.378	1.422	490
$\ln TA$	$\ln$ Tangible Assets	6.182	1.838	490
C	crisis dummy: =1 for 2008-2014; =0 for 2004-2007	0.594	0.492	490
A	cooperative age (in years)	12.622	11.536	490
latitude		46.994	1.474	490
longitude		0.817	2.655	490
S (sector)	=1 for carpentry; =0 for plumbing	0.49	0.5	490
cooperatives in $\leq 50$ km		1.939	0.999	490
cooperatives in $\leq 100$ km		4.959	2.951	490
cooperatives in $\leq 200$ km		1.414	0.700	490

Table A3: Descriptive statistics

year	stats	$\ln T$	$\ln IC$	$\ln LE$	$\ln IA$	$\ln TA$
2004	mean	8.005	7.767	5.950	1.199	4.331
	std. dev.	0.169	0.177	0.063	1.696	1.096
	median	8.005	7.767	5.950	1.199	4.331
2005	mean	9.049	8.858	6.532	0.782	6.100
	std. dev.	1.038	1.045	0.975	1.199	1.481
	median	8.947	8.723	6.439	0.000	6.019
2006	mean	8.983	8.779	6.475	0.945	5.851
	std. dev.	0.964	0.972	0.969	1.181	1.640
	median	8.911	8.737	6.377	0.000	5.541
2007	mean	9.035	8.834	6.591	1.405	6.089
	std. dev.	0.964	0.972	0.982	1.353	1.716
	median	8.888	8.663	6.458	1.099	5.984
2008	mean	8.994	8.794	6.532	1.592	6.091
	std. dev.	1.027	1.026	1.074	1.435	1.853
	median	8.845	8.648	6.515	1.386	5.970
2009	mean	9.014	8.809	6.632	1.415	6.258
	std. dev.	0.964	0.966	0.989	1.416	1.754
	median	8.803	8.613	6.547	1.099	6.223
2010	mean	9.045	8.835	6.682	1.482	6.253
	std. dev.	0.977	0.978	0.974	1.350	1.757
	median	8.834	8.633	6.468	1.386	6.407
2011	mean	9.105	8.895	6.753	1.573	6.354
	std. dev.	0.972	0.973	0.967	1.421	1.813
	median	8.940	8.755	6.600	1.701	6.351
2012	mean	9.125	8.912	6.811	1.470	6.311
	std. dev.	0.978	0.980	0.977	1.505	1.921
	median	9.139	8.919	6.723	1.099	6.418
2013	mean	9.114	8.903	6.809	1.336	6.274
	std. dev.	0.975	0.980	0.961	1.595	2.017
	median	9.019	8.842	6.771	0.347	6.563
2014	mean	9.166	8.954	6.869	1.503	6.235
	std. dev.	1.003	1.012	0.991	1.529	2.190
	median	9.224	9.038	6.884	1.386	6.625
Total	mean	9.061	8.855	6.680	1.378	6.182
	std. dev.	0.974	0.978	0.980	1.422	1.838
	median	8.930	8.731	6.561	1.099	6.246

### A.3. Robustness checks and results for alternative specifications

Various additional robustness checks have been made. A large set of flexible functional forms is available to the empirical researcher (Thompson, 1988). Giannakas *et al.* (2003) show that an inappropriate choice of the functional form could result in significantly biased efficiency estimates and misleading policy recommendations regarding efficiency improvements. Their results strongly reject the *ad hoc* imposition of a functional form and underline the importance of searching for the write specification. Cobb-Douglas is a special case of the Translog model. Less parsimonious function forms such as Generalized Leontieff can also be used, but with they lack parsimony in the case of our small sample.

We conduct Bayesian model selection based on WAIC and LOO. These two information criteria reject the Cobb-Douglas function that has a slightly worse fit ( $WAIC = -2232.62.19$  and  $LOO = -2229.19$  for the Cobb-Douglas function *vs.*  $WAIC = -2261.61$  and  $LOO = -2255.17$  for the Translog function). We can also place a lasso prior on the population-level effects (Park and Casella, 2008). This shrinkage prior is the Bayesian equivalent to the lasso method for performing variable selection. The model with a lasso prior selects at least some parameters included in the Translog model ( $\ln IC^2$ ,  $\ln TA^2$ ,  $\ln LE \times \ln TA$ ,  $\ln IA \times \ln TA$ ), suggesting a better fit for this model.

Table A4: Results for the Cobb-Douglas Model

Parameter	ESS	mean	s.d.	2.5%	50%	97.5%
Intercept	5578	0.382	0.022	0.339	0.381	0.424
$\ln IC$	5727	0.926	0.006	0.914	0.926	0.938
$\ln LE$	5532	0.076	0.006	0.064	0.076	0.088
$\ln IA$	10000	0.000	0.001	-0.002	-0.000	0.001
$\ln TA$	8615	-0.001	0.001	-0.003	-0.001	0.001
$S$	3464	-0.029	0.008	-0.045	-0.029	-0.014
$C$	7355	-0.015	0.005	-0.024	-0.015	-0.006
$A$	5154	-0.001	0.000	-0.001	-0.001	-0.000
$S \times C$	6659	0.019	0.007	0.006	0.018	0.032
$S \times A$	4767	0.001	0.001	-0.000	0.001	0.002
$C \times A$	8406	0.001	0.000	0.000	0.001	0.001
$S \times C \times A$	8261	-0.001	0.000	-0.002	-0.001	0.000
$\phi$	2732	0.014	0.002	0.011	0.014	0.018
$\sigma$	10000	0.015	0.001	0.014	0.015	0.016

Notes: ESS: Effective Sample Size, s.d.: standard deviation.



Table A5: Results for the Translog model with a lasso prior

Parameter	ESS	mean	s.d.	2.5%	50%	97.5%
Intercept	2337	-0.008	0.145	-0.296	-0.006	0.268
$\ln IC$	1392	1.113	0.062	1.002	1.111	1.241
$\ln LE$	1129	-0.056	0.051	-0.167	-0.050	0.029
$\ln IA$	2856	-0.028	0.011	-0.051	-0.027	-0.006
$\ln TA$	2417	0.003	0.015	-0.025	0.003	0.033
$\ln IC^2$	1038	-0.020	0.009	-0.040	-0.019	-0.004
$\ln LE^2$	1336	0.001	0.009	-0.019	0.001	0.018
$\ln IA^2$	4000	0.001	0.001	-0.000	0.001	0.002
$\ln TA^2$	4000	0.002	0.001	0.000	0.002	0.003
$S$	1588	-0.030	0.008	-0.046	-0.030	-0.014
$C$	3215	-0.018	0.005	-0.027	-0.018	-0.008
$A$	2110	-0.001	0.000	-0.002	-0.001	-0.000
$\ln IC \times \ln LE$	1086	0.020	0.018	-0.011	0.019	0.059
$\ln IC \times \ln IA$	2533	0.004	0.003	-0.002	0.004	0.011
$\ln IC \times \ln TA$	2597	0.005	0.004	-0.003	0.005	0.013
$\ln LE \times \ln IA$	2698	-0.000	0.003	-0.006	-0.000	0.006
$\ln LE \times \ln TA$	3086	-0.010	0.004	-0.017	-0.010	-0.003
$\ln IA \times \ln TA$	4000	-0.002	0.001	-0.004	-0.002	-0.001
$S \times C$	2987	0.018	0.007	0.005	0.018	0.031
$S \times A$	2179	0.001	0.001	0.000	0.001	0.002
$C \times A$	3387	0.001	0.000	0.000	0.001	0.001
$S \times C \times A$	3282	-0.001	0.000	-0.002	-0.001	-0.000
$\phi$	1164	0.014	0.002	0.011	0.014	0.018
$\sigma$	4000	0.015	0.001	0.014	0.015	0.016
lasso $\lambda^{-1}$	4000	0.007	0.002	0.004	0.007	0.011

Notes: ESS: Effective Sample Size, s.d.: standard deviation.

Next, we test for unobserved heterogeneity. Unobserved heterogeneity is where correlation between observables and unobservables may be expected (Arellano, 2003). This issue may lead to biased estimations. We test several alternative methods that lead to the same results. A first possibility is the choice to add an inefficiency error term in the production function regression, that becomes a random effects stochastic frontier analysis (Greene, 2005). A first preliminary analysis allows us to reject this approach.<sup>4</sup>

More generally, as any production analysis based on longitudinal data, our results may suffer from endogeneity (between the dependent variable and one or several independent variables) or unobserved heterogeneity. We have a sample with a small  $T$  (short time frame) and small  $N$  (few individuals). Therefore, the GMM (Generalized Method of Moments) may produce even more biased estimates (Roodman, 2009). A first simple and robust approach is to use the Mundlak-Chamberlain correction (Wooldridge, 2010). In production function and efficiency analysis, this method has already been implemented by Emvalomatis (2012) and Griffiths and Hajargasht (2016). We just have to test the joint hypothesis of nullity for added parameters, namely the average of each time varying variable, using a VAT (Variable addition test). The Bayesian test reject this hypothesis ( $Estimate = 0.0394$  with  $e.s. = 0.0447$ ). We have also a higher WAIC. Another possibility is to reestimate our model using Lewbel (2012)'s method. This method serves to identify structural parameters in regression models with potentially endogenous regressors in the absence of traditional identifying information, such as external instruments or repeated measurements based on large panels (see Mishra and Smyth (2015) for an example). Results are slightly similar to our previous results (economies of scale=1.56), for both the amplitude and the statistical significance of parameters. We implement the unconditional quasi-maximum likelihood estimator of Hsiao *et al.* (2002) for linear dynamic panel models with fixed effects. Authors provide simulation evidence indicating that their estimator performs better than the GMM estimator. Obtained results are also similar and lead us to reject the addition of a lagged dependent variable. The economies of scale estimated are slightly higher (1.82). Finally, in order to give a broader comparison, we provide the estimations for the classical Arellano and Bond (1991) GMM method, although results may be biased for our panel, as explained above. Again, the economies of scale are similar to those estimated with our benchmark model (economies of scale=1.49).

---

<sup>4</sup>The two models were estimated using maximum likelihood. The stochastic frontier model with time inefficiency has a  $BIC = -2078.545$ ; for the model without the inefficiency error term  $BIC = -2084.556$ , suggesting a better fit. The two models have a likelihood  $L = 1102.417$ ; the difference lies in the higher degrees of freedom needed for the stochastic frontier model.

Table A6: Estimation using Mundlak Model

Parameter	ESS	mean	s.d.	2.5%	50%	97.5%
Intercept	6918	-0.144	0.157	-0.451	-0.144	0.160
$\ln IC$	4404	1.249	0.068	1.116	1.249	1.383
$\ln IC_{mean}$	3685	-0.040	0.020	-0.080	-0.041	0.000
$\ln LE$	3795	-0.169	0.063	-0.292	-0.169	-0.046
$\ln LE_{mean}$	3109	0.033	0.019	-0.003	0.033	0.071
$\ln IA$	6104	-0.028	0.012	-0.052	-0.029	-0.005
$\ln IA_{mean}$	5054	0.000	0.003	-0.005	0.000	0.005
$\ln TA$	6031	-0.005	0.018	-0.038	-0.005	0.029
$\ln TA_{mean}$	4874	0.004	0.003	-0.003	0.004	0.010
$\ln IC^2$	3588	-0.041	0.011	-0.064	-0.041	-0.019
$\ln LE^2$	4383	-0.014	0.011	-0.037	-0.014	0.008
$\ln IA^2$	10000	0.001	0.001	0.000	0.001	0.002
$\ln TA^2$	8115	0.001	0.001	0.000	0.002	0.003
$S$	4513	-0.024	0.011	-0.045	-0.024	-0.004
$C$	7832	-0.015	0.005	-0.025	-0.015	-0.005
$C_{mean}$	5371	0.046	0.044	-0.043	0.046	0.131
$A$	10000	-0.002	0.001	-0.003	-0.002	0.000
$A_{mean}$	10000	0.001	0.001	-0.001	0.001	0.002
$\ln IC \times \ln LE$	3735	0.056	0.022	0.012	0.056	0.101
$\ln IC \times \ln IA$	5455	0.005	0.003	-0.002	0.005	0.012
$\ln IC \times \ln TA$	5789	0.007	0.004	-0.002	0.007	0.016
$\ln LE \times \ln IA$	6412	-0.001	0.003	-0.007	-0.001	0.006
$\ln LE \times \ln TA$	6550	-0.012	0.004	-0.019	-0.012	-0.005
$\ln IA \times \ln TA$	10000	-0.002	0.001	-0.004	-0.002	0.000
$S \times C$	7616	0.019	0.007	0.005	0.019	0.032
$S \times A$	7009	0.001	0.001	0.000	0.001	0.002
$C \times A$	8182	0.001	0.000	0.000	0.001	0.001
$S \times C \times A$	8596	-0.001	0.000	-0.002	-0.001	0.000
$\phi$	3140	0.014	0.002	0.010	0.014	0.018
$\sigma$	10000	0.015	0.001	0.013	0.015	0.016

Notes: ESS: Effective Sample Size, s.d.: standard deviation.

Table A7: Estimation using Lewbel (2012)'s method

Variable	coef.	s.e.
$\ln IC$	1.357***	0.110
$\ln LE$	-0.241**	0.106
$\ln IA$	-0.010	0.023
$\ln TA$	-0.051	0.036
$\ln IC^2$	-0.074***	0.018
$\ln LE^2$	-0.051***	0.019
$\ln IA^2$	-0.000	0.001
$\ln TA^2$	0.000	0.001
$\ln IC \times \ln LE$	0.120***	0.036
$\ln IC \times \ln IA$	-0.001	0.007
$\ln IC \times \ln TA$	0.018**	0.009
$\ln LE \times \ln IA$	0.002	0.007
$\ln LE \times \ln TA$	-0.017**	0.008
$\ln IA \times \ln TA$	0.001	0.002
$S$	-	-
$C$	-0.017***	0.007
$A$	-0.001	0.001
$S \times C$	0.020**	0.009
$S \times A$	0.002	0.001
$C \times A$	0.001***	0.000
$S \times C \times A$	-0.001**	0.001
Underidentification test	chi2(71)=69.130	p-value=0.541
Overidentification Sargan test	chi2(70)=75.819	p-value=0.296

Notes: s.e.: standard error; \*  $p < 0.1$ ; \*\*  $p < 0.05$ ; \*\*\*  $p < 0.01$ .

Table A8: Estimation using Hsiao *et al.* (2002)'s method

Variable	coef.	s.e.
$Lag(\ln T)$	0.002	0.008
$\ln IC$	1.437***	0.082
$\ln LE$	-0.378***	0.083
$\ln IA$	-0.024	0.015
$\ln TA$	0.049*	0.025
$\ln IC^2$	-0.069***	0.014
$\ln LE^2$	-0.037***	0.014
$\ln IA^2$	-0.000	0.001
$\ln TA^2$	0.003***	0.001
$\ln IC \times \ln LE$	0.111***	0.028
$\ln IC \times \ln IA$	0.005	0.004
$\ln IC \times \ln TA$	-0.004	0.006
$\ln LE \times \ln IA$	-0.002	0.005
$\ln LE \times \ln TA$	-0.008	0.006
$\ln IA \times \ln TA$	-0.000	0.001
$S$	0.000	0.000
$C$	-0.015**	0.007
$A$	0.000	0.001
$S \times C$	0.016	0.010
$S \times A$	-0.001	0.001
$C \times A$	0.001***	0.000
$S \times C \times A$	-0.000	0.000
Intercept	-0.564***	0.211

Notes: s.e.: standard error; \*  $p < 0.1$ ; \*\*  $p < 0.05$ ; \*\*\*  $p < 0.01$ .

Table A9: Estimation using Arellano and Bond (1991)'s method

Variable	coef.	s.e.
$Lag(\ln T)$	0.003	0.004
$\ln IC$	1.279***	0.052
$\ln LE$	-0.231***	0.046
$\ln IA$	-0.032***	0.010
$\ln TA$	0.049***	0.012
$\ln IC^2$	-0.043***	0.009
$\ln LE^2$	-0.020**	0.009
$\ln IA^2$	-0.000	0.001
$\ln TA^2$	0.003***	0.001
$\ln IC \times \ln LE$	0.067***	0.017
$\ln IC \times \ln IA$	0.004	0.003
$\ln IC \times \ln TA$	-0.005	0.004
$\ln LE \times \ln IA$	0.001	0.003
$\ln LE \times \ln TA$	-0.005	0.004
$\ln IA \times \ln TA$	-0.001*	0.001
$S$	-0.022***	0.006
$C$	-0.010**	0.005
$A$	-0.001***	0.000
$S \times C$	0.010	0.006
$S \times A$	0.001	0.000
$C \times A$	0.001***	0.000
$S \times C \times A$	-0.001	0.000
Intercept	-0.325***	0.106

Notes: s.e.: standard error; \*  $p < 0.1$ ; \*\*  $p < 0.05$ ; \*\*\*  $p < 0.01$ .

Another point is the spatial dimension of data. The craftsmen cooperatives are unevenly distributed across France and in some regions they may be in competition. A simple first approach is to count the number of cooperatives in a given radius (50, 100 or 200 km). We can also estimate GAMM (Generalized Additive Mixed Models) (Wood, 2006; Santias *et al.*, 2011) using latitude and longitude coordinates. Adding the number of cooperatives in a 100 km radius lead to a slightly better fit, but has no impact on the parameters of interest. The 200 km radius model and the GAMM model lead to a worst fit.

Table A10: Results for the GAMM model

Parameter	ESS	mean	s.d.	2.5%	50%	97.5%
Intercept	7731	-0.197	0.145	-0.489	-0.197	0.090
$\ln IC'$	4612	1.238	0.067	1.104	0.238	1.369
$\ln LE$	3493	-0.172	0.061	-0.290	-0.172	-0.054
$\ln IA$	6446	-0.021	0.012	-0.044	-0.021	0.001
$\ln TA$	6107	0.003	0.016	-0.028	0.003	0.035
$I(\ln IC^2)$	3764	-0.044	0.011	-0.065	-0.044	-0.022
$I(\ln LE^2)$	4645	-0.019	0.011	-0.040	-0.019	0.002
$I(\ln IA^2)$	10000	0.001	0.001	0.000	0.001	0.002
$I(\ln TA^2)$	8160	0.002	0.001	0.000	0.002	0.003
$S$	4733	-0.016	0.005	-0.026	-0.016	-0.006
$C$	10000	-0.008	0.003	-0.014	-0.008	-0.001
$A$	7402	-0.001	0.000	-0.001	-0.001	0.000
$\ln IC' \times \ln LE$	3530	0.064	0.021	0.023	0.065	0.106
$\ln IC' \times \ln IA$	5550	0.001	0.003	-0.006	0.001	0.008
$\ln IC' \times \ln TA$	5748	0.007	0.004	-0.001	0.007	0.015
$\ln LE \times \ln IA$	5848	0.003	0.003	-0.003	0.003	0.010
$\ln LE \times \ln TA$	7075	-0.013	0.004	-0.020	-0.013	-0.005
$\ln IA \times \ln TA$	10000	-0.002	0.001	-0.004	-0.002	-0.001
$C : A$	10000	0.000	0.000	0.000	0.000	0.001
$s(\text{lat}, \text{lon})\text{Fx1}$	5851	0.002	0.003	-0.004	0.002	0.008
$s(\text{lat}, \text{lon})\text{Fx2}$	3792	-0.001	0.005	-0.012	0.000	0.008
$b[s(\text{lat}, \text{lon}) \text{Xr}:1]$	10000	0.001	0.012	-0.024	0.000	0.028
$b[s(\text{lat}, \text{lon}) \text{Xr}:2]$	10000	0.001	0.012	-0.025	0.000	0.027
$b[s(\text{lat}, \text{lon}) \text{Xr}:3]$	10000	0.000	0.012	-0.025	-0.000	0.027
$b[s(\text{lat}, \text{lon}) \text{Xr}:4]$	10000	-0.002	0.012	-0.031	-0.000	0.020
$b[s(\text{lat}, \text{lon}) \text{Xr}:5]$	10000	-0.002	0.012	-0.032	-0.000	0.023
$b[s(\text{lat}, \text{lon}) \text{Xr}:6]$	10000	-0.004	0.013	-0.039	-0.001	0.015
$b[s(\text{lat}, \text{lon}) \text{Xr}:7]$	10000	-0.003	0.012	-0.032	-0.001	0.019
$b[s(\text{lat}, \text{lon}) \text{Xr}:8]$	10000	0.003	0.012	-0.017	0.001	0.034
$b[s(\text{lat}, \text{lon}) \text{Xr}:9]$	10000	0.000	0.011	-0.024	0.000	0.025
$b[s(\text{lat}, \text{lon}) \text{Xr}:10]$	10000	0.000	0.012	-0.025	0.000	0.027
$b[s(\text{lat}, \text{lon}) \text{Xr}:11]$	4013	-0.006	0.013	-0.042	-0.002	0.014
$b[s(\text{lat}, \text{lon}) \text{Xr}:12]$	10000	-0.002	0.012	-0.029	-0.000	0.021
$b[s(\text{lat}, \text{lon}) \text{Xr}:13]$	5915	-0.004	0.012	-0.035	-0.001	0.016
$b[s(\text{lat}, \text{lon}) \text{Xr}:14]$	10000	0.002	0.011	-0.020	0.000	0.028
$b[s(\text{lat}, \text{lon}) \text{Xr}:15]$	10000	0.002	0.012	-0.022	0.001	0.030
$b[s(\text{lat}, \text{lon}) \text{Xr}:16]$	5023	-0.004	0.012	-0.033	-0.001	0.016
$b[s(\text{lat}, \text{lon}) \text{Xr}:17]$	10000	-0.001	0.011	-0.027	-0.000	0.021
$b[s(\text{lat}, \text{lon}) \text{Xr}:18]$	10000	0.003	0.012	-0.017	0.001	0.033
$b[s(\text{lat}, \text{lon}) \text{Xr}:19]$	3460	-0.007	0.013	-0.040	-0.003	0.011
$b[s(\text{lat}, \text{lon}) \text{Xr}:20]$	4030	-0.006	0.012	-0.036	-0.002	0.011
$b[s(\text{lat}, \text{lon}) \text{Xr}:21]$	8295	-0.001	0.009	-0.022	-0.000	0.018
$b[s(\text{lat}, \text{lon}) \text{Xr}:22]$	6763	0.004	0.010	-0.013	0.002	0.029
$b[s(\text{lat}, \text{lon}) \text{Xr}:23]$	10000	-0.000	0.009	-0.020	-0.000	0.018
$b[s(\text{lat}, \text{lon}) \text{Xr}:24]$	10000	-0.001	0.008	-0.018	-0.000	0.016
$b[s(\text{lat}, \text{lon}) \text{Xr}:25]$	3955	-0.004	0.008	-0.023	-0.002	0.010
$b[s(\text{lat}, \text{lon}) \text{Xr}:26]$	1955	-0.010	0.010	-0.034	-0.008	0.003
$b[s(\text{lat}, \text{lon}) \text{Xr}:27]$	3370	-0.005	0.009	-0.028	-0.003	0.008
$\sigma$	10000	0.015	0.001	0.014	0.015	0.016
log-posterior	1685	1019.016	9.441	999.191	1019.291	1036.604

Notes: ESS: Effective Sample Size, s.d.: standard deviation.



Table A11: Results for radius of 50 km, 100 km, and 200 km

Parameter	Radius 50 km						Radius 100 km						Radius 200 km					
	ESS	mean	s.d.	2.5%	50%	97.5%	ESS	mean	s.d.	2.5%	50%	97.5%	ESS	mean	s.d.	2.5%	50%	97.5%
Intercept	6242	-0.190	0.151	-0.486	-0.188	0.104	6072	-0.201	0.147	-0.488	-0.203	0.082	5097	-0.194	0.148	-0.484	-0.195	0.098
$\ln IC$	3775	1.236	0.067	1.106	1.236	1.366	3405	1.237	0.066	1.108	1.237	1.365	2831	1.237	0.068	1.101	1.236	1.371
$\ln LE$	3050	-0.167	0.061	-0.284	-0.166	-0.045	2818	-0.166	0.059	-0.285	-0.165	-0.051	2443	-0.166	0.062	-0.288	-0.166	-0.045
$\ln IA$	5149	-0.028	0.012	-0.051	-0.028	-0.005	5342	-0.029	0.012	-0.052	-0.029	-0.006	4790	-0.028	0.012	-0.051	-0.028	-0.004
$\ln TA$	4577	0.004	0.016	-0.029	0.003	0.036	5069	0.005	0.017	-0.028	0.005	0.037	4074	0.003	0.016	-0.028	0.003	0.036
$\ln IC^2$	2966	-0.039	0.011	-0.061	-0.039	-0.018	2577	-0.039	0.011	-0.062	-0.039	-0.017	2239	-0.040	0.011	-0.062	-0.039	-0.017
$\ln LE^2$	3568	-0.013	0.011	-0.034	-0.013	0.009	3117	-0.012	0.011	-0.034	-0.012	0.009	2757	-0.013	0.011	-0.034	-0.013	0.009
$\ln IA^2$	10000	0.001	0.001	-0.000	0.001	0.002	10000	0.001	0.001	-0.000	0.001	0.002	10000	0.001	0.001	-0.000	0.001	0.002
$\ln TA^2$	6833	0.002	0.001	0.000	0.002	0.003	7382	0.002	0.001	0.000	0.002	0.003	6356	0.002	0.001	0.000	0.002	0.003
$S$	3261	-0.033	0.008	-0.049	-0.033	-0.017	3940	-0.034	0.008	-0.051	-0.035	-0.018	3532	-0.033	0.008	-0.050	-0.033	-0.017
$C$	6299	-0.018	0.005	-0.027	-0.018	-0.008	6540	-0.017	0.005	-0.027	-0.017	-0.008	5466	-0.018	0.005	-0.027	-0.018	-0.008
$A$	5214	-0.001	0.000	-0.002	-0.001	-0.000	4556	-0.001	0.000	-0.002	-0.001	-0.000	4428	-0.001	0.000	-0.002	-0.001	-0.000
coop in $\leq 50$ km	3310	-0.000	0.003	-0.006	-0.000	0.005												
coop in $\leq 100$ km							3243	0.001	0.001	-0.001	0.001	0.003						
coop in $\leq 200$ km													2649	-0.000	0.004	-0.007	-0.000	0.007
$\ln IC \times \ln LE$	3016	0.054	0.022	0.011	0.054	0.096	2673	0.053	0.021	0.011	0.053	0.095	2331	0.054	0.022	0.011	0.054	0.097
$\ln IC \times \ln IA$	4587	0.004	0.003	-0.003	0.004	0.011	4589	0.004	0.003	-0.003	0.004	0.011	3999	0.004	0.003	-0.003	0.004	0.011
$\ln IC \times \ln TA$	4476	0.006	0.004	-0.003	0.006	0.014	4918	0.005	0.004	-0.003	0.005	0.014	4337	0.006	0.004	-0.002	0.006	0.014
$\ln LE \times \ln IA$	5263	0.000	0.003	-0.006	0.000	0.007	5107	0.000	0.003	-0.006	0.000	0.007	4474	0.000	0.003	-0.006	0.000	0.007
$\ln LE \times \ln TA$	5696	-0.011	0.004	-0.019	-0.011	-0.004	5853	-0.011	0.004	-0.018	-0.011	-0.004	4669	-0.011	0.004	-0.018	-0.011	-0.004
$\ln IA \times \ln TA$	10000	-0.002	0.001	-0.004	-0.002	-0.001	10000	-0.002	0.001	-0.004	-0.002	-0.001	10000	-0.002	0.001	-0.004	-0.002	-0.001
$S \times C$	6221	0.019	0.007	0.006	0.019	0.032	6267	0.019	0.007	0.006	0.019	0.032	5030	0.019	0.007	0.005	0.019	0.031
$S \times A$	3866	0.001	0.001	0.000	0.001	0.002	4763	0.001	0.001	0.000	0.001	0.002	4252	0.001	0.001	0.000	0.001	0.002
$C \times A$	7175	0.001	0.000	0.000	0.001	0.001	7462	0.001	0.000	0.000	0.001	0.001	6195	0.001	0.000	0.000	0.001	0.001
$S \times C \times A$	7599	-0.001	0.000	-0.002	-0.001	-0.000	7484	-0.001	0.000	-0.002	-0.001	0.000	5934	-0.001	0.000	-0.002	-0.001	-0.000
$\phi$	2915	0.015	0.002	0.011	0.014	0.019	2732	0.014	0.002	0.011	0.015	0.019	2475	0.014	0.002	0.011	0.014	0.019
$\sigma$	10000	0.014	0.001	0.013	0.014	0.016	10000	0.014	0.001	0.013	0.014	0.016	10000	0.014	0.001	0.013	0.014	0.016

Notes: ESS: Effective Sample Size, s.d.: standard deviation.

Finally, in order to account for uncertainty induced by model selection inconstancy (Piironen and Vehatari, 2015), we can correct the estimates with model averaging based on models weights (Yao *et al.*, 2018). These model weights are analogous to posterior probabilities of models, conditional on expected future data. Following Piironen and Vehatari (2015), we choose two main weighting methods. The first one are the Aikake-type weights (McElreath, 2016):

$$w_m^{Aikake} = \frac{\exp(\frac{-1}{2}dW AIC_m)}{\sum_{n=1}^N \exp(\frac{-1}{2}dW AIC_n)} \quad (3)$$

where  $dW AIC_m$  the WAIC difference between model  $m$  and the model with the lowest WAIC.

The second method are the pseudo-BMA (Bayesian model averaging) weights based on  $elpd_{loo}$  (Yao *et al.*, 2018), the LOO expected log pointwise predictive density (see Vehtari *et al.* (2017) for a definition):

$$w_m^{pseudo-BMA} = \frac{\exp(elpd_{loo}^m - \frac{1}{2}se(elpd_{loo}^m))}{\sum_{n=1}^N \exp(elpd_{loo}^n)} \quad (4)$$

Table A12: Information criteria for the various specifications

Model	LOO		WAIC		Weights	
	estimate	s.e.	estimate	s.e.	Aikake	Pseudo BMA
Translog	-2255.17	52.74	-2261.62	51.5	0.229	0.168
Cobb-Douglas	-2229.19	51.34	-2232.62	50.69	0.000	0.040
Mundlak	-2250.6	52.56	-2256.93	5158	0.022	0.060
GAMM	-2250.21	52.25	-2255.53	51.34	0.011	0.163
Radius 50km	-2255.74	52.58	-2262.19	51.4	0.305	0.210
Radius 100km	-2255.91	52.46	-2261.77	51.42	0.247	0.231
Radius 200km	-2254.74	52.54	-2261.2	51.46	0.186	0.127

Note: s.e.: standard error.

Population estimates are reported in Table A13.<sup>5</sup> We see that there are only slightly changes with respect to the benchmark model.

Table A13: Main estimates: benchmark model vs. model averaging

	Translog		Model averaging			
			Aikake		Pseudo BMA	
	estimate	s.e.	estimate	s.e.	estimate	s.e.
$\ln IC$	1.235	0.067	1.237	0.067	1.224	0.077
$\ln LE$	-0.165	0.060	-0.166	0.061	-0.157	0.068
$\ln IA$	-0.028	0.012	-0.028	0.012	-0.026	0.013
$\ln TA$	0.003	0.016	0.004	0.016	0.003	0.016
$\ln IC^2$	-0.039	0.011	-0.039	0.011	-0.038	0.012
$\ln LE^2$	-0.013	0.011	-0.013	0.011	-0.013	0.011
$\ln IA^2$	0.001	0.001	0.001	0.001	0.001	0.001
$\ln TA^2$	0.002	0.001	0.002	0.001	0.002	0.001
$\ln IC \times \ln LE$	0.053	0.021	0.054	0.022	0.053	0.023
$\ln IC \times \ln IA$	0.004	0.003	0.004	0.003	0.003	0.003
$\ln IC \times \ln TA$	0.006	0.004	0.006	0.004	0.006	0.004
$\ln LE \times \ln IA$	0.000	0.003	0.000	0.003	0.000	0.003
$\ln LE \times \ln TA$	-0.011	0.004	-0.011	0.004	-0.011	0.004
$\ln IA \times \ln TA$	-0.002	0.001	-0.002	0.001	-0.002	0.001
$S$	-0.033	0.008	-0.033	0.008	-0.030	0.010
$C$	-0.018	0.005	-0.018	0.005	-0.016	0.006
$A$	-0.001	0.000	-0.001	0.000	-0.001	0.000
$S \times C$	0.019	0.007	0.019	0.007	0.016	0.009
$S \times A$	0.001	0.001	0.001	0.001	0.001	0.001
$C \times A$	0.001	0.000	0.001	0.000	0.001	0.000
$S \times C \times A$	-0.001	0.000	-0.001	0.000	-0.001	0.000
Intercept	-0.190	0.150	-0.193	0.122	-0.168	0.148

Note: s.e.: standard error.

<sup>5</sup>See Yao *et al.* (2018) and Burnham and Anderson (2004) for the details on the averaging methods.

**Les Working Papers SMART – LERECO sont produits par l'UMR SMART-LERECO**

• **UMR SMART-LERECO**

L'Unité Mixte de Recherche (UMR 1302) *Laboratoire d'Etudes et de Recherches en Economie sur les Structures et Marchés Agricoles, Ressources et Territoires* comprend les unités de recherche en Economie de l'INRA de Rennes et de l'INRA de Nantes et les membres des Unités Pédagogiques de Rennes et Angers du département Economie, Gestion et Société d'Agrocampus Ouest.

Adresse:

UMR SMART-LERECO, 4 allée Adolphe Bobierre, CS 61103, 35011 Rennes cedex

Site internet : <https://www6.rennes.inra.fr/smart/>

**Liste complète des Working Papers SMART – LERECO :**

<https://www6.rennes.inra.fr/smart/Working-Papers-SMART-LERECO>

<https://ideas.repec.org/s/rae/wpaper.html>

<http://ageconsearch.umn.edu/handle/204962/>

**The Working Papers SMART – LERECO are produced by UMR SMART-LERECO**

• **UMR SMART-LERECO**

The « Mixed Unit of Research » (UMR1302) *Laboratory for Empirical Research in Economics on Structures and Markets in Agriculture, Resources and Territories* is composed of the research units in Economics of INRA Rennes and INRA Nantes and of the members of the Agrocampus Ouest's Department of Economics, Management and Society who are located in Rennes and Angers.

Address:

UMR SMART-LERECO, 4 allée Adolphe Bobierre, CS 61103, 35011 Rennes cedex

Website: [https://www6.rennes.inra.fr/smart\\_eng/](https://www6.rennes.inra.fr/smart_eng/)

**Full list of the Working Papers SMART – LERECO:**

[https://www6.rennes.inra.fr/smart\\_eng/Working-Papers-SMART-LERECO](https://www6.rennes.inra.fr/smart_eng/Working-Papers-SMART-LERECO)

<https://ideas.repec.org/s/rae/wpaper.html>

<http://ageconsearch.umn.edu/handle/204962/>

**Contact**

**Working Papers SMART – LERECO**

INRA, UMR SMART-LERECO

4 allée Adolphe Bobierre, CS 61103

35011 Rennes cedex, France

**Email :** [smart-lereco-wp@inra.fr](mailto:smart-lereco-wp@inra.fr)

**2018**

**Working Papers SMART – LERECO**

UMR INRA-Agrocampus Ouest **SMART-LERECO** (Laboratoire d'Etudes et de Recherches en  
Economie sur les Structures et Marchés Agricoles, Ressources et Territoires)

Rennes, France

---