



HAL
open science

Spatial and spectral regularization to discriminate tissues using multispectral photoacoustic imaging

Aneline Dolet, Francois Varray, Simon Mure, Thomas Grenier, Yubin Liu, Zhen Yuan, Piero Tortoli, Didier Vray

► **To cite this version:**

Aneline Dolet, Francois Varray, Simon Mure, Thomas Grenier, Yubin Liu, et al.. Spatial and spectral regularization to discriminate tissues using multispectral photoacoustic imaging. EURASIP Journal on Advances in Signal Processing, 2018, 2018 (1), pp.39. 10.1186/s13634-018-0554-8 . hal-01909562

HAL Id: hal-01909562

<https://hal.science/hal-01909562v1>

Submitted on 31 Oct 2018

HAL is a multi-disciplinary open access archive for the deposit and dissemination of scientific research documents, whether they are published or not. The documents may come from teaching and research institutions in France or abroad, or from public or private research centers.

L'archive ouverte pluridisciplinaire **HAL**, est destinée au dépôt et à la diffusion de documents scientifiques de niveau recherche, publiés ou non, émanant des établissements d'enseignement et de recherche français ou étrangers, des laboratoires publics ou privés.

RESEARCH

Open Access



Spatial and spectral regularization to discriminate tissues using multispectral photoacoustic imaging

Aneline Dolet^{1,2*}, François Varray¹, Simon Mure¹, Thomas Grenier¹, Yubin Liu³, Zhen Yuan³, Piero Tortoli² and Didier Vray¹

Abstract

Photoacoustics is a hybrid modality used to image biological tissues. As optical absorption of tissues depends on the wavelength of the transmitted light, multispectral photoacoustic datasets can be obtained by changing this wavelength. This study presents a regularization method to segment multispectral photoacoustic images based on both the spatial and spectral features of the dataset pixels. The proposed processing is adapted from the spatiotemporal mean-shift approach and cluster patterns with similar spectral profiles, i.e., the variation of the received amplitude among the wavelengths, independent of their initial position. The segmentation performance of this method has been experimentally tested on multispectral photoacoustic tomographic data. We initially used a phantom that contained fresh and stale liver samples, and then a second phantom that contained two blood dilutions or a colored absorber. Experimentally, a clustering performance greater than 98% is achieved. This method makes it possible to discriminate between different media, between the same medium as fresh or stale, and between the same medium with different dilutions.

Keywords: Photoacoustic imaging, Multispectral imaging, Spatial and spectral filtering

1 Introduction

Multispectral photoacoustic imaging is a functional method that combines the advantages of acoustic and optical imaging [1], the principle of which is to illuminate a region of interest (ROI) with a pulsed laser at different wavelengths. Hence, acoustic waves that originate from a temperature increase due to optical absorption can back-propagate from the ROI to a receiving ultrasound probe. Moreover, illumination of a ROI with a range of optical wavelengths allows the study of the spectral profile of the contained media, as their respective optical absorptions will differ from each other depending on the wavelength of the light [2, 3]. For example, oxygenated and deoxygenated blood can be differentiated by their photoacoustic spectral evolution when they are illuminated in the range [600 nm ; 900 nm] [4]. This is of great interest in cancer-related

studies, as it can allow differentiation between malignant and benign tumors as part of the follow-up of carcinomas or it can be used to evaluate tissue death [5, 6].

In past years, unsupervised and supervised segmentation or classification methods have been proposed to automatically discriminate between biological media using multispectral photoacoustic datasets. However, whether they were based on principal and independent component analysis [7], on spectral fitting [7], or on least-squares criteria [8], these methods essentially relied on the spectral shape evolution rather than on the absolute photoacoustic signal amplitude at each wavelength. Thus, they did not take into account light attenuation or ultrasonic dispersion. This means that a given medium will have different spectral profiles because of the concentration change within the medium that modifies the absorption, the light attenuation within the tissue that impacts differently on the pixels at different depths, and the different target sizes that create ultrasound waves at different frequencies. Consequently, media discrimination in multispectral photoacoustic imaging is a challenging task that

*Correspondence: aneline.dolet@creatis.insa-lyon.fr

¹Univ. Lyon, INSA-Lyon, Université Claude Bernard Lyon 1, UJM-Saint Etienne, CNRS, Inserm, CREATIS UMR 5220, U1206, F-69621 Lyon, France

²Department of Information Engineering, University of Florence, Florence, Italy
Full list of author information is available at the end of the article

requires as many features as possible. [9, 10] presented intra-class correlations using both the spatial neighborhood and the spectral signature of the pixels, but this did not provide the expected performance improvement. In the present study, our aims were (1) to propose a method based on both spatial and spectral features to improve media discrimination using multispectral photoacoustic imaging and (2) to deal with absolute amplitude changes related to concentration differences within a given medium.

To these ends, we adapted the spatiotemporal mean-shift (STM-S) approach to our context, which demonstrated good performance for magnetic resonance image clustering by taking into account both spatial and evolutive features [11]. We have already shown some preliminary result on a single experimental dataset [12], and further to this, we present here an automatic pre-processing pipeline and a deeper study of the parameter choices. Moreover, the quantitative validation is fully explained, and the performance of STM-S is evaluated on several photoacoustic datasets that were acquired from two different home-made phantoms. The first phantom contained two pieces of the same medium that have to be discriminated, one of which was fresh tissue and the other of which was stale tissue. The second phantom contained two different dilutions of the same biological medium, i.e., blood, which corresponded to two different concentrations of oxygen inside these inclusions that could be clustered together or separately, depending on the application. Indeed, it might be important to discriminate different concentrations of a single medium, e.g., to determine the concentration of a contrast agent in the body, and to discriminate a single medium from all other media without considering their dilutions, e.g., to determine the level of vascularization for calculation of the oxygenation rate [13].

In the STM-S method, which we shall henceforth refer to as the spatio-spectral mean-shift (SSM-S), the required pre-image and post-image processing are presented in the next section. The datasets acquired for each of the phantoms are presented in Section 3. Then, the results are presented and discussed. Finally, the performance obtained is compared to other methods, followed by the conclusions.

2 Methods

2.1 Pre-processing

The first processing step is to discriminate the photoacoustic signals of the absorbing media from the background noise over the imaged region. The background is suppressed by application of a threshold that is related to the gradient calculation from Sobel filtering. The Sobel threshold Th_{Sobel} is computed using Eq. (1), as follows:

$$Th_{Sobel} = 2 \times \sqrt{\bar{G}} \quad (1)$$

where \bar{G} is the mean of the Sobel gradient magnitude [14]. Further processing thus considers only the region where the pixels have high photoacoustic responses at all wavelengths.

The step that follows is the normalization of the spectral profiles of each pixel of interest, and this is applied only when different concentrations of the same medium are to be merged (i.e., when no discrimination between medium concentrations is needed). Indeed, the spectral shape of a medium is independent of the concentrations of its constituents, while the amplitude depends on these. To consider only the spectral shape without including the amplitude, the spectral profile of each pixel with a photoacoustic signal is normalized as follows.

Let us consider the spectral profile, $A \in \mathbb{R}^L$, of a given pixel, where A_{λ_l} are discrete photoacoustic signal amplitudes that are acquired at the wavelengths λ_l , $l = 1 \dots L$, chosen according to the media for discrimination. To have our tuning parameters invariant of the spectral profile of the media, we first integrate and normalize the amplitudes of A , as:

$$A_{\lambda_l}^* = \frac{\sum_{i=1}^l A_{\lambda_i}}{\sum_{i=1}^L A_{\lambda_i}} \quad (2)$$

where $A_{\lambda_l}^*$ is the normalized amplitude of A_{λ_l} at the wavelength λ_l . This processing is applied to all of the pixel spectral profiles A at all of the wavelengths λ_l of $[\lambda_1; \lambda_L]$. Thus, full range adaptation is achieved, which allows images in the same amplitude range to always be dealt with. This normalization was preferred to the classical one that uses the maximum, because it allows the noise to be smoothed, whereas the maximum normalization does not.

Applying this normalization step to the data allows different concentrations of a single medium to be merged as a single cluster. On the other hand, using non-normalized data allows discrimination between different concentrations as if they were associated with different absorbing media.

2.2 Spatio-spectral mean-shift filtering

Compared to the algorithm used to cluster longitudinal magnetic resonance imaging [11], this study aims to apply STM-S as the SSM-S. This means handling the spectral profiles of multispectral photoacoustic data instead of the temporal evolutions of longitudinal magnetic resonance images.

The multispectral photoacoustic data came from a sequence of two-dimensional images of a ROI. Each image was acquired at a specific wavelength λ_l . Each pixel \mathbf{x}_i located at a position \mathbf{s}_i has a spectral profile A_i . The N samples \mathbf{x}_i that are used in the iterative filtering procedure are expressed as shown here:

$$\mathbf{x}_i = [\mathbf{s}_i \ A_i] \in \mathbf{X} \text{ with } \mathbf{s}_i \in \mathbb{R}^S, \text{ spatial position} \\ A_i \in \mathbb{R}^L, \text{ spectral profile} \quad (3) \\ i \in [1; N], \text{ sample index}$$

We introduce the two tuning parameters of the SSM-S approach: R_S and R_λ .

For a given pixel \mathbf{x}_i , let us consider first its neighboring pixels in the spatial dimension within a radial distance R_S (Fig. 1, left). These pixels $\mathbf{x}_j = [\mathbf{s}_j \ A_j]$ satisfy the equation:

$$\frac{1}{R_S^2} (\mathbf{s}_i - \mathbf{s}_j)^T (\mathbf{s}_i - \mathbf{s}_j) \leq 1 \quad (4)$$

As the spectral profiles of samples of the same medium are close, R_λ is fixed as the maximum accepted distance between the spectral profiles of two samples of the same medium. Then, only the pixels that satisfy both constraints (as part of the spatial area defined above and spectrally close to the reference spectrum, and controlled by R_λ) are used for the update, by computing the mean, the position, and the spectral profile of the reference pixel (Fig. 1, right). Consequently, these pixels also satisfy:

$$\frac{1}{R_\lambda} \|A_i - A_j\|_\infty \leq 1 \quad (5)$$

In Eq. (5), the infinity norm is the most appropriated norm, because it allows pixels with close spectral shapes to be merged even if the amplitudes at each wavelength are not exactly the same. This also allows spectral profiles with large differences in amplitude at a single wavelength to be differentiated, because the spectral shapes of these pixels are then considered to be different. However, different norms can be used, depending on the desired effect. Iteration of the spectral mean-shift algorithm can then be achieved through the following calculation:

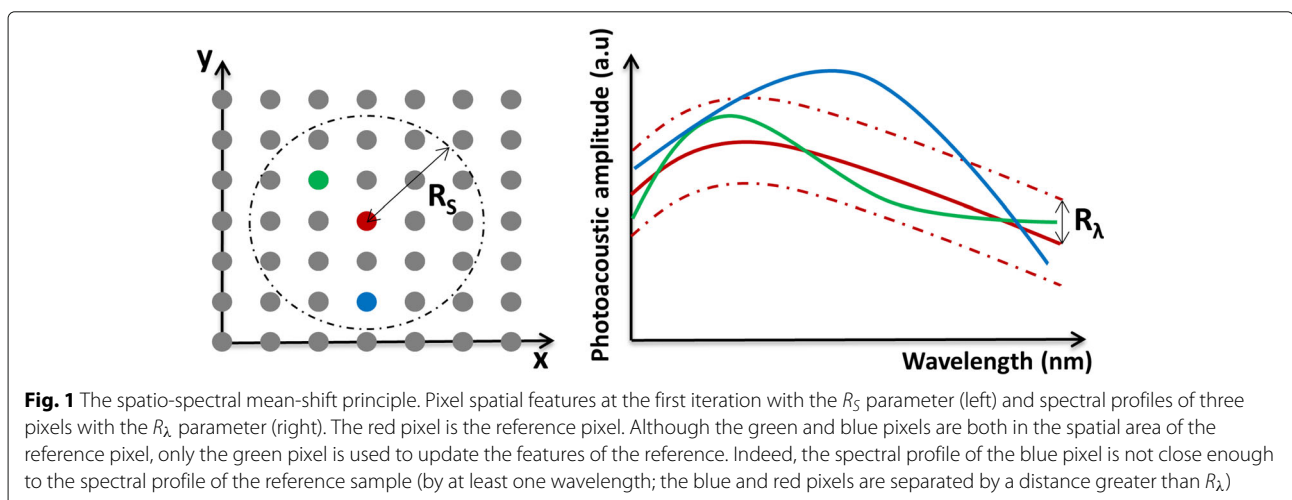
$$\mathbf{x}_i^{[k+1]} = \frac{\sum_{j=1}^N g_s(\mathbf{s}_i^{[k]}; \mathbf{s}_j^{[k]}) \cdot g_\lambda(A_i^{[k]}; A_j^{[k]}) \cdot \mathbf{x}_j^{[k]}}{\sum_{j=1}^N g_s(\mathbf{s}_i^{[k]}; \mathbf{s}_j^{[k]}) \cdot g_\lambda(A_i^{[k]}; A_j^{[k]})} \quad (6)$$

where $g_s(\mathbf{s}_i^{[k]}; \mathbf{s}_j^{[k]}) = 1$ if Eq. (4) is respected, or it is 0 otherwise, and $g_\lambda(A_i^{[k]}; A_j^{[k]}) = 1$ if Eq. (5) is respected, or it is 0 otherwise. These steps are applied iteratively to all pixels \mathbf{x}_i of the imaged region \mathbf{X} until convergence of the procedure, i.e., stabilization of the featured value throughout the filtering process. Indeed, at each iteration, the shift of each updated pixel during the regularization process is calculated. The algorithm stops when the sum of all of these shifts becomes lower than a pre-defined threshold. The result of this SSM-S algorithm can easily be used to segment the imaged region. Indeed, even if the result contains too many clusters compared to the desired result, all of the pixels with close spectral profiles are labeled together.

The main advantage of mean-shift spatial regularization is that two areas of the imaged region can be merged into the same cluster even if they are spatially distant, as long as their spectral profiles are close. Moreover, this helps two nearby pixels to be clustered together even if their spectral profiles have small amplitude or shape differences. Indeed, the same medium might be present at different locations within the imaged ROI, and two close pixels are likely to belong to the same medium.

2.3 Post-processing

Different areas of the same medium characterized by the same absorption coefficient will produce spectral profiles that have the same shape but that have different amplitudes. This latter effect is due to light attenuation and ultrasonic dispersion in the medium. Then, with



SSM-S, a medium is represented by more than one label. This is due to the strong amplitude differences between these labeled spectra, which are obtained even if their shapes are similar. Here, only the P largest labeled areas will be kept, while P is chosen depending on the number of media to be discriminated. The other pixels will be kept unlabeled. Thus, the labeled areas will correspond to the different media to be discriminated. To reduce the number of labels, post-processing based on spatial features only is applied in the nearest neighbor manner. The sets of C labeled pixels and $N - C$ unlabeled pixels can be referred to as $\mathbf{Y} = \{\mathbf{y}_i\}_{i=1;C}$ and $\mathbf{U} = \{\mathbf{u}_j\}_{j=1;N-C}$, respectively, with:

$$\begin{cases} \mathbf{y}_i = [\mathbf{s}_i ; c_i] \\ \mathbf{u}_j = [\mathbf{s}_j ; c_j = 0] \end{cases} \quad (7)$$

where $c_i \in \mathbb{R}$ is the associated label of a pixel \mathbf{x}_i . For each unlabeled pixel $\mathbf{u}_j \in \mathbf{U}$, the closest spatial pixel \mathbf{y}_{i^*} in \mathbf{Y} is then found, and c_j takes the value of its corresponding index c_{i^*} , as follows:

$$i^*|_j = \underset{i=1;C}{\operatorname{argmin}} \|\mathbf{s}_j - \mathbf{s}_i\| \quad (8)$$

then $c_j = c_{i^*}$

The post-processing then allows the number of clusters to be reduced, with only the most representative ones kept. Indeed, the unlabeled pixels are clustered with one of the kept labels, considering only the spatial features, i.e., an unlabeled pixel is clustered with the spatially closest SSM-S cluster that is kept.

2.4 Quantitative validation

First of all, a ground truth is needed to evaluate the proposed method. The first threshold applied in the processing steps (Fig. 2) is used to create a binary mask. The background pixels are set to zero, while the others, i.e.,

which belong to different media, are equal to one. After labeling the connected components, counting the pixel population of each region in the reference mask is trivial.

Secondly, two quantitative measures are used to determine the quality of the results of this method: the Dice similarity coefficient (DSC) [15] and the percentage of well-clustered pixels, where its value is named WCP . These are compared in the evaluations here.

The number of well-clustered pixels is counted after the post-processing step. Thus, the WCP is expressed relative to all of the pixels to cluster. To compute this criterion, a pixel merged with the background is considered as well clustered. With this strategy, the WCP range from 0 to 100%, i.e., from “no well-clustered pixels” to “perfect segmentation.” With regards to the DSC, the measure will range from 0 when no pixel is correctly labeled to 1 for a perfect result.

The difference between both of these performance calculations is that the DSC will drop together with the number of pixels clustered as background, while it is not considered as a penalizing factor when computing the WCP . Thus, the DSC will always be inferior or equal to the WCP with respect to their result scales. Moreover, the aim in our evaluation was to determine whether or not the method can be used to discriminate between different media without considering the background. Consequently, with the DSC being more restrictive than the WCP , this might appear less appropriate for the targeted application.

The different processing steps described in Section 2 are summarized in Fig. 2.

3 Materials

3.1 Experimental setup

Both of the experimental datasets used in this study were acquired at the University of Macau (People’s Republic of Macau, China) with the multispectral photoacoustic

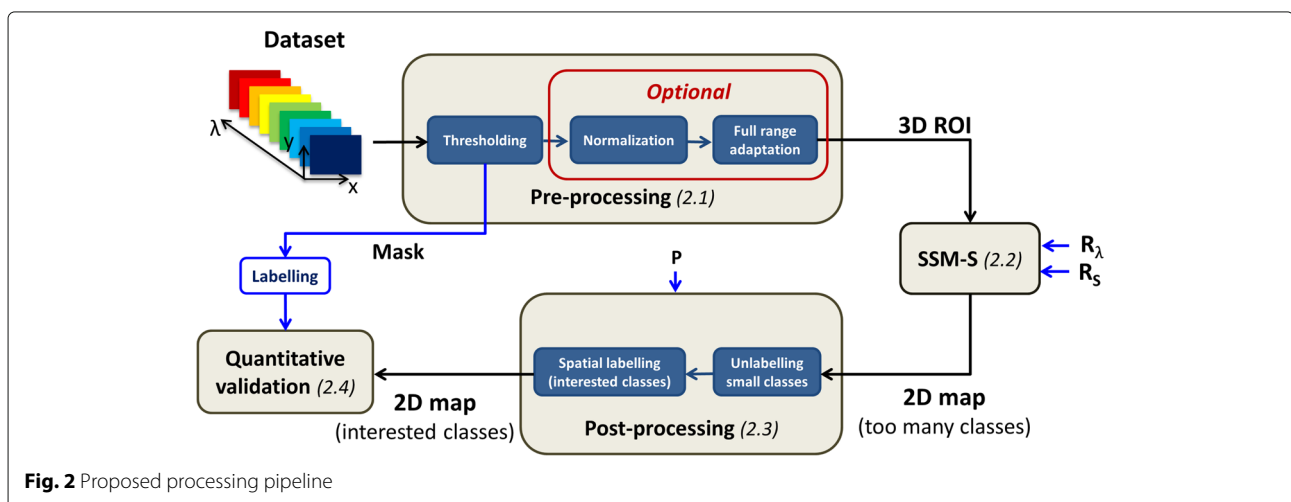


Fig. 2 Proposed processing pipeline

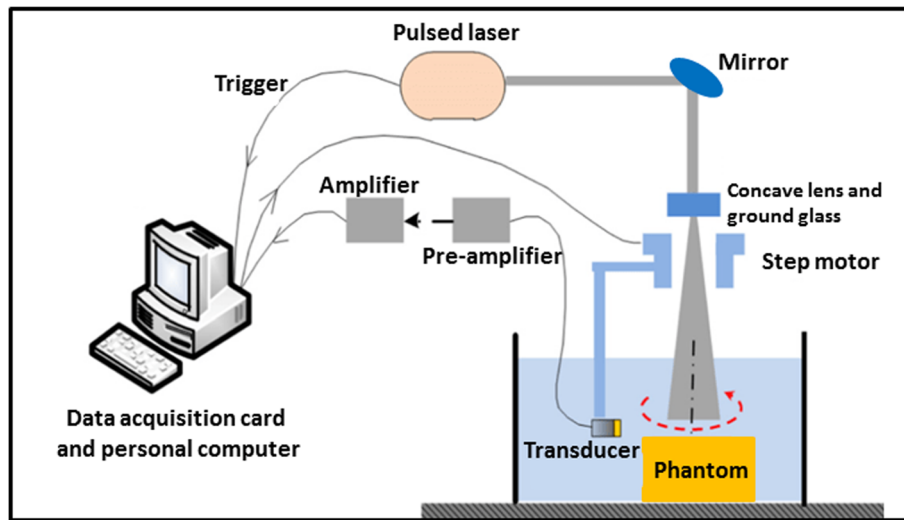


Fig. 3 Experimental setup used for the photoacoustic tomography acquisitions

tomography acquisition setup presented in Fig. 3 [16]. The optical excitation was a Nd:YAG laser pulse with a duration of 6 ns, coupled to an optical parametric oscillator. The ultrasound transducer had a central frequency of 1 MHz and was immersed in water together with the phantom. The laser highlights the top of the phantom, and the ultrasound transducer acquires photoacoustic signals all around the cylindrical phantom at one depth [16]. Moreover, to acquire signals with enough photoacoustic energy, the absorbing media are set particularly close to the surface and the slice of interest that is to be acquired by the ultrasound transducer is also close to the surface, which thus avoids too much optical energy diffusion (Fig. 3).

3.2 Recognition of the same fresh and stale medium

The first phantom used in this study was a cylindrical polyvinyl alcohol phantom (diameter, 4.5 cm) with

two inclusions of liver tissue of approximately 4 mm in size (Fig. 4a). One inclusion was fresh liver tissue (upper, triangular shape), and the other was stale liver tissue (i.e., after 12 h in ambient air; lower, rectangular shape). This phantom was chosen to assess the discrimination ability of our method when two media show different, but close, spectral profiles. Indeed, [6] reported that photoacoustic biological tissue signals still evolve over time after death (from alive to 1 day after death). The phantom was then created with fresh liver (directly from the fridge) and a sample of the same fresh liver after 12 h in ambient air (mimicking the photoacoustic evolution of [6]). The images were acquired for laser wavelengths from 700 to 900 nm (Fig. 4b), with 25-nm steps. The spectral profiles of several pixels within the inclusions are shown in Fig. 4c. The overlap of the different pixel profiles included shows how challenging the segmentation is.

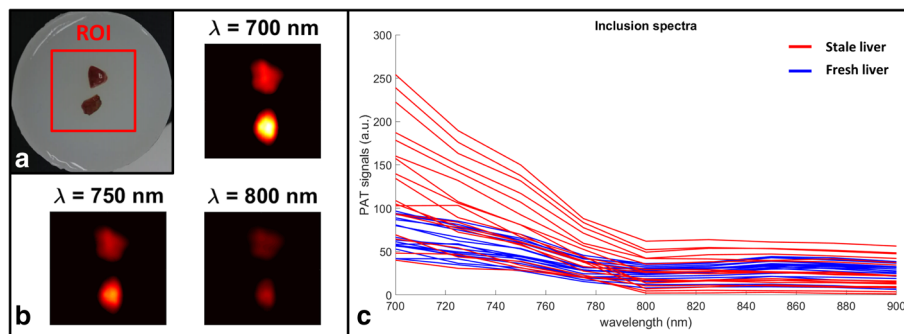


Fig. 4 Photoacoustic tomography acquisition for the liver phantom. **a** Phantom used for the discrimination study between fresh (upper, triangular) and stale (lower, rectangular; after 12 h in ambient air) pieces of liver tissue. **b** Three photoacoustic experimental ROI images after thresholding at different wavelengths. **c** Spectral profiles of the selected pixels from each inclusion

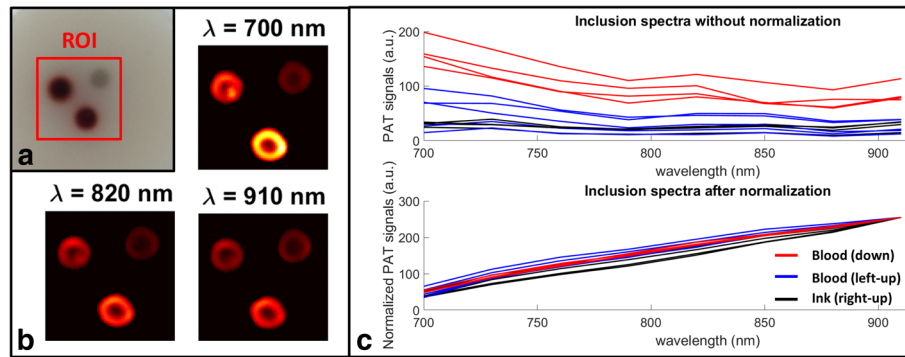


Fig. 5 Photoacoustic tomography acquisition for the blood and ink phantoms. **a** Phantom used for the discrimination study between blood dilutions. The inclusion in gray is China ink, and the two black inclusions are blood at two different dilutions. **b** Three photoacoustic experimental ROI images after thresholding at different wavelengths. **c** Spectral profiles of the selected pixels from each inclusion with (upper) and without (lower) normalization

3.3 Discrimination between different medium concentrations

The second phantom used was also a cylindrical polyvinyl alcohol phantom (diameter, 4.5 cm) but here with three 4-mm-diameter cylindrical inclusions (Fig. 5a). Two inclusions were filled with blood at two different dilutions, corresponding to two different concentrations of oxygen inside these inclusions, and one was filled with diluted black China ink (upper right). This phantom was chosen to test the performance of our method for the discrimination of two media with close spectral profile shapes and clearly different amplitudes, which corresponds to the photoacoustic signal properties of one medium at different dilutions [17]. Here, a 0.5 dilution factor was used to test our algorithm on the two absorbing media with reasonable amplitude difference spectra. The dataset was acquired at eight different wavelengths from 700 to 910 nm (Fig. 5b), with 30-nm steps. The spectral profiles from the pixels selected within the inclusions can be seen in Fig. 5c (upper profiles). Figure 5c (lower profiles) also shows the same spectral profiles after normalization, where both blood inclusion spectral profiles are similar (which was not the case without normalization), while the ink inclusion spectral profiles are still slightly different. Again, there is overlap between the inclusion profiles. Indeed, in all cases, the inclusion boundaries and their centers have lower photoacoustic signal amplitudes, mainly due to light attenuation.

4 Results

The processing steps are shown here initially only with reference to the blood dataset. Then, the results from these two different types of discrimination are presented. The first results show the feasibility of discriminating between fresh and stale samples of the same medium.

The second results are related to the discrimination or merging of different concentrations of the same medium. The multispectral photoacoustic data were taken through pre-processing, followed by the SSM-S algorithm and post-processing, as presented above. The values of the parameters used for each dataset are summarized in Table 1.

4.1 Pre-processing thresholding

The thresholding step allows suppression of the background noise, as shown in Fig. 6a. For this dataset with the blood and ink inclusions, the pre-processed threshold allowed suppression of all values under 18% of the maximum photoacoustic signal amplitude detected over the dataset. The normalization step can be performed if the discrimination between concentrations is not needed. As this is a facultative step, it is not shown in Fig. 6.

4.2 Resulting SSM-S map and post-processing

As explained above, the resulting SSM-S map using R_λ and R_S of 15 a.u. and 19 pixels, respectively (Fig. 6b), has more clusters than the expected number for this dataset because of light attenuation and diffusion. To remove unnecessary clusters, only the three largest ($P = 3$) resulting

Table 1 Parameters used in this study

Dataset	Desired discrimination	Normalization	Parameters		
			R_S (pixels)	R_λ a.u.	P
Liver	Fresh/stale	No	25	20	2
Blood and ink	None concentrations	Yes	15	19	2
Blood and ink	Concentrations	No	15	19	3

R_S number of pixels, R_λ photoacoustic signal (arbitrary units a.u., as amplitudes of the pixels), P number of clusters desired

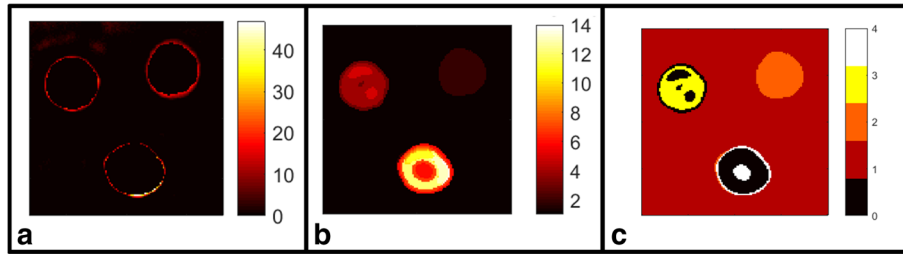


Fig. 6 Each step of the results. **a** Background noise suppressed by thresholding (for each pixel, the maximum noise amplitudes over all of the wavelengths is shown). **b** Output of the spatio-spectral mean-shift algorithm. **c** Two-dimensional map obtained, keeping only the P largest labeled areas. Unlabeled pixels are in black (label sets to zero)

SSM-S clusters are maintained (Fig. 6c). Then, the unlabeled pixels of Fig. 6c (in black) are clustered with the spatially closest cluster that is kept. Here, the black pixels then become white or yellow, depending on the inclusion (Fig. 8d).

4.3 Discrimination between fresh and stale tissues

When there is the need to discriminate between fresh and stale tissues, the normalization step is not used. Indeed, these fresh and stale media would be merged if normalization was carried out, because the shapes of the fresh and stale liver tissue spectral profiles are similar (Fig. 4c). In this case, by setting $R_\lambda = 20$ a.u. and $R_S = 25$ pixels, there is discrimination between the fresh and stale liver tissues (Fig. 7d). In the present case, the WCP is then 100% and the DSC is 0.87. These scores of the WCP and DSC mean that the segmentation is perfect considering the important task of this clustering method. Indeed, the DSC does not reach its maximal score, which is 1.0, only because some pixels at the inclusion boundaries are clustered with the background.

4.4 Discrimination between concentrations

Using the dataset obtained from the analysis of the three cylindrical inclusions (i.e., two dilutions of blood and diluted China ink), the above processing steps are performed with $R_\lambda = 19$ a.u. and $R_S = 15$ pixels. Normalization is applied only when the different concentrations

of the same medium are to be merged, i.e., the different oxygen concentrations in the two blood inclusions. The number of clusters that were kept during the post-processing, P , is then set to 2 or 3 when normalization is or is not performed, respectively.

Figure 8c presents the segmentation map for when normalization is applied. With this strategy, the WCP is 98% which is close to the maximal score. Indeed, the two inclusions of the different blood dilutions are well segmented in the same cluster by the algorithm. Only some pixels at the blood inclusion boundaries are misclassified and are instead classified with the ink cluster, because they have low photoacoustic signal amplitudes. As no pixel is classified with background, the DSC is 0.98, also giving a result that is close to the expert reference.

Alternatively, not using the normalization step allows discrimination between the different oxygen concentrations of the blood of this phantom. The corresponding segmentation map is shown in Fig. 8d. Here, a few pixels at the bottom of the inclusion boundaries are segmented with the ink inclusion, again because of their low photoacoustic signal. However, the segmentation with discrimination between concentrations achieves a WCP of 99% (i.e., close to the best score). Here, some pixels at inclusion boundaries are clustered with the background, which leads to DSC of 0.97, which is still a high score.

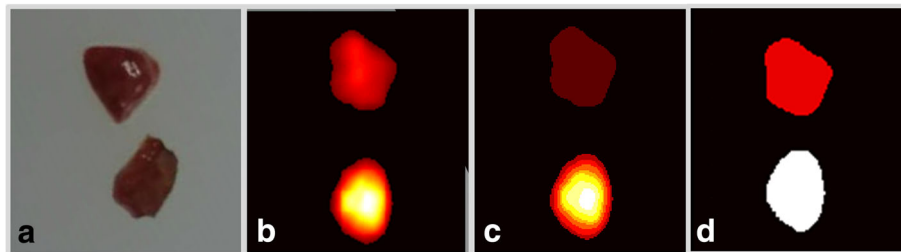


Fig. 7 Liver phantom results. **a** Imaged regions of the experimental phantom. **b** Photoacoustic tomography imaging after thresholding of experimental phantom at 700 nm. **c** Resulting spatio-spectral mean-shift map. **d** Segmentation map after post-processing

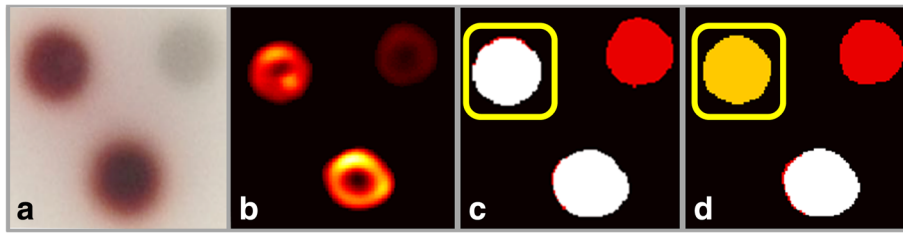


Fig. 8 Blood and ink phantom results. **a** Imaged region of the experimental phantom. **b** Photoacoustic tomography imaging after thresholding for the experimental phantom at 730 nm. **c** Resulting spatio-spectral mean-shift map with no discrimination between dilutions. **d** Resulting spatio-spectral mean-shift map with discrimination between dilutions. The upper-left inclusion is clustered with the bottom one if there is no dilution discrimination or it remains separate if there is dilution discrimination

4.5 Setting of R_S and R_λ

The settings used for the two parameters R_S and R_λ were also investigated. These results are shown in the blood and ink dataset when normalization was carried out to merge these two dilutions of blood (Fig. 9). The pixels clustered with the background are considered as well clustered in Fig. 9. It can be seen that with very small R_λ (i.e., where too many clusters are created) or very large R_λ (i.e., where the two media are clustered together), the performances decrease. However, the range where R_λ is well adapted to the data is large enough (i.e., from 5 to 15 a.u. in the present case), and in this range, R_S does not particularly affect the performance. Moreover, when R_λ is above this range, the reduction of R_S provided increased performance, because it helps the agglomeration of close pixels that are then probably of the same medium. Finally, even if these settings change a little for each dataset, choosing R_λ in the range of 10 to 25 a.u. with R_S in the range of 10 to 45 pixels provides good performance (above 75%) for all of the datasets, which makes this algorithm easy to use.

5 Discussion

In this paper, we presented a new media segmentation method called SSM-S and tested it on multispectral photoacoustic images. We have shown its ability to discriminate between fresh and stale tissues of the same medium and also between different concentrations of the same medium. Its results were compared to two state-of-the-art methods based on spectral fitting [7] and intra-class correlation [9, 10].

Compared to them, SSM-S showed interesting performance after processing the same dataset, using the same pre-processing pipeline and carrying out its evaluations on the same ground truth. However, as these methods are supervised discrimination methods, a reference spectrum is computed for each medium, as the mean of its pixel spectra. Moreover, as the resulting maps already contain the desired number of clusters, no post-processing step is needed.

The performances of each method are presented in Table 2, and their resulting maps are shown in Fig. 10,

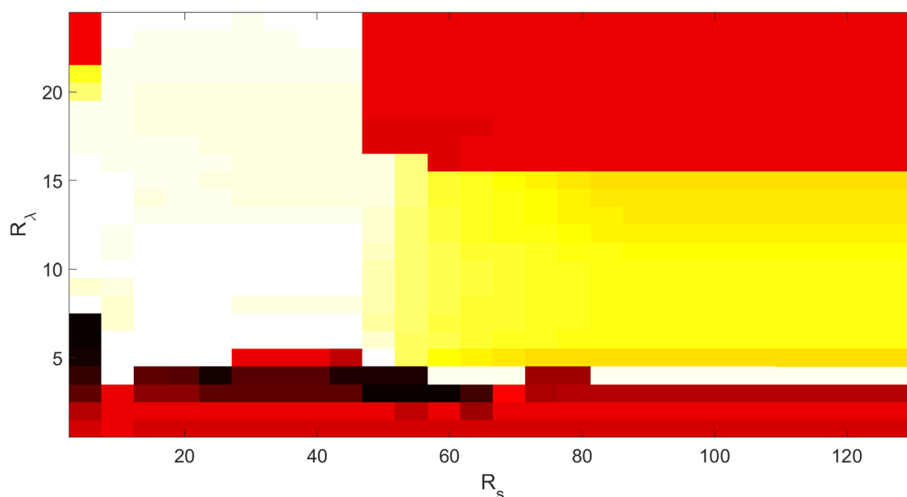


Fig. 9 Setting of R_S and R_λ . Success map for varying R_S and R_λ with the blood and ink dataset, when the normalization step is included

Table 2 Performance of the discriminations for spectral fitting (SF) [7], intra-class correlation (ICC) [9, 10], and the spatio-spectral mean-shift (SSM-S) algorithm, considering two evaluation criteria: the percentage of well-clustered pixels (where *WCP* is the value) and the Dice similarity coefficient (DSC)

Dataset	Desired discrimination	Normalization	<i>WCP</i> (%)			DSC		
			SF	ICC	SSM-S	SF	ICC	SSM-S
Liver	Fresh/stale	No	95	76	100	0.91	0.63	0.87
Blood and ink	None (concentrations)	Yes	86	87	98	0.86	0.87	0.98
Blood and ink	Concentrations	No	77	34	99	0.77	0.34	0.97

where it can be seen that SSM-S performs best. Moreover, Table 2 shows that the SSM-S results are the best with all the dataset or the desired discrimination when considering the *WCP* criterion, which is the most appropriate to use for the targeted applications. For example, after evaluating the three approaches on the liver dataset, the spectral fitting algorithm performs at 95% with the *WCP* and at 0.91 with the DSC, the intra-class correlation method performs at 76% with the *WCP* and at 0.63 with the DSC while SSM-S performs at 100% with the *WCP*, i.e. perfect segmentation, and at 0.87 with the DSC. A smaller DSC value than *WCP* value is obtained by SSM-S because the DSC computation imposes to associate each pixel to a cluster, rather than allowing to consider some of them as background. Thus, informed by these results, we can say that SSM-S outperforms the other two state-of-the-art approaches with both datasets, whichever discrimination system is considered.

Moreover, SSM-S performance exceeds 98% with *WCP* and is equal or greater than 0.87 with DSC for all the

cases, i.e., all the datasets and the desired discrimination. Depending on the type of discrimination that is needed, the normalization step allows to merge pixels belonging to the same medium but with different concentrations. However, the parameters have to be carefully chosen.

First, as the signals back-scattered by a given medium might have different amplitudes due to light attenuation and diffusion, the thresholding step must consider the very low photoacoustic signals at the inclusion boundaries as background in order to avoid misclassification of pixels and local errors. Also, since the light absorption of the media can differ depending on the wavelength used, the background noise can be equal to different percentages of the maximal amplitude of the dataset. However, these problems are overcome by setting an appropriate threshold in the pre-processing pipeline.

Then, two parameters need to be set to run the SSM-S approach. R_λ is the parameter that has the greater impact on its results, but, in our experience, its most adapted values range between 10 and 25 a.u. of the photoacoustic

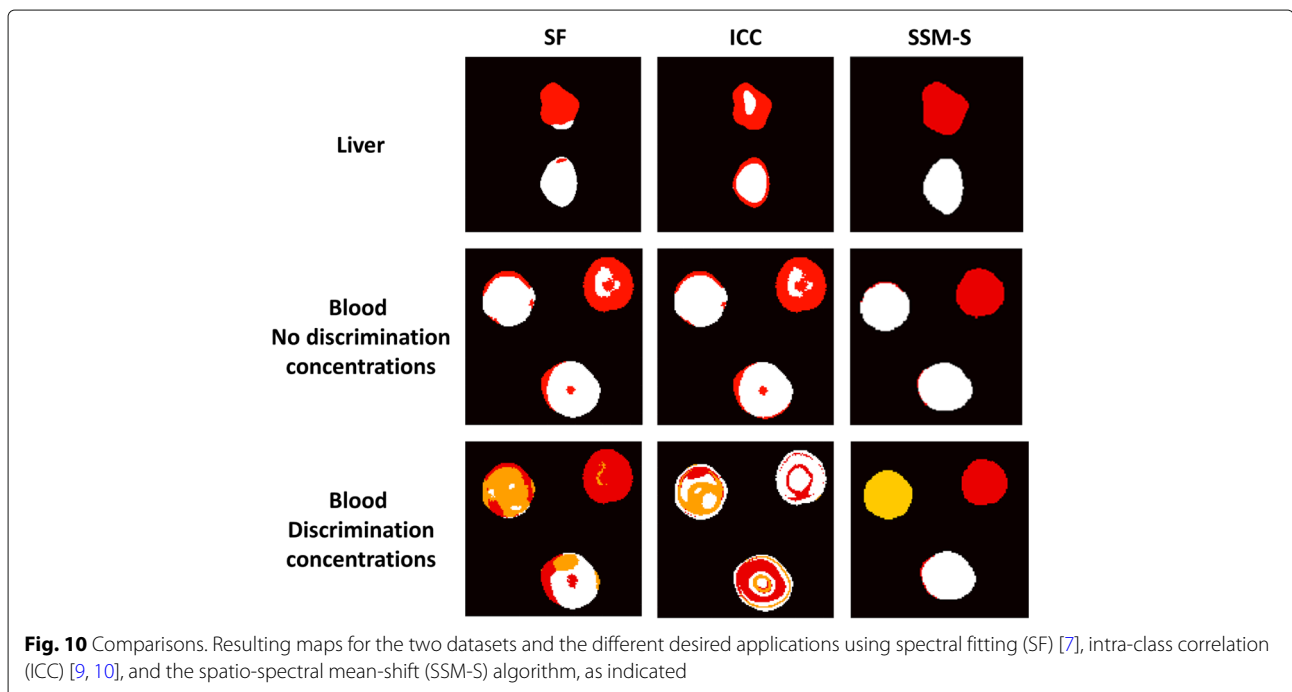


Fig. 10 Comparisons. Resulting maps for the two datasets and the different desired applications using spectral fitting (SF) [7], intra-class correlation (ICC) [9, 10], and the spatio-spectral mean-shift (SSM-S) algorithm, as indicated

signal. Regarding R_S , it has a moderate impact on the performance if R_λ is well set up. Its optimal value ranges from 10 to 45 pixels, in our experience. Finally, the number of clusters P only depends on the desired discrimination criterion. Thus, finding appropriate settings for these three parameters is rather straightforward.

To conclude, and as previously mentioned in Section 1, the shape and the size of the media to discriminate can make the segmentation difficult because of their impact on the photoacoustic signal. Consequently, further studies could be undertaken on datasets containing inclusions with different shapes and sizes. It could also be interesting to evaluate SSM-S behavior with mixed medium datasets. Finally, further studies could also be carried out using different liver samples with varying wait times in ambient air in order to determine how SSM-S could differentiate them. This might be of particular interest in forensic medicine to estimate the death time of the tissues.

6 Conclusions

The aim of the SSM-S algorithm is to highlight a medium of interest in an imaged region, such as to define a vascularized region in terms of the blood oxygenation rate, with a view to further quantification studies. The results of this study show that this can be achieved with high performance, even if light attenuation and ultrasonic dispersion are not compensated for in the multispectral photoacoustic dataset, which is the typical use of these kinds of data.

Abbreviations

DSC: Dice similarity coefficient; ICC: Intra-class correlation; ROI: Region of interest; SF: Spectral-fitting; SSM-S: Spatio-spectral mean-shift; STM-S: Spatiotemporal mean-shift; WCP: Well-clustered pixels

Acknowledgements

This work was supported by the LABEX CELYA (ANR-10-LABX-0060) and LABEX PRIMES (ANR-10-LABX-0063) of Université de Lyon, within the program *Investissements d'Avenir* (ANR-11-IDEX-0007) operated by the French National Research Agency (ANR). It was also performed within the framework of the Université Franco-Italienne (VINCI 2016) and the Région Rhône-Alpes (EXPLORA DOC).

Availability of data and materials

Please contact the author for data requests.

Authors' contributions

All authors participated in the writing and/or revision of the manuscript. All of the authors have read and approved the final version of the manuscript.

Competing interests

The authors declare that they have no competing interests.

Publisher's Note

Springer Nature remains neutral with regard to jurisdictional claims in published maps and institutional affiliations.

Author details

¹Univ. Lyon, INSA-Lyon, Université Claude Bernard Lyon 1, UJM-Saint Etienne, CNRS, Inserm, CREATIS UMR 5220, U1206, F-69621 Lyon, France. ²Department of Information Engineering, University of Florence, Florence, Italy. ³Bioimaging Core - Faculty of Health Sciences, University of Macau, People's Republic of Macau, China.

Received: 15 January 2018 Accepted: 28 May 2018

Published online: 20 June 2018

References

- M Vallet, F Varray, J Boutet, JM Dinten, G Caliano, AS Savoia, D Vray, Quantitative comparison of PZT and CMUT probes for photoacoustic imaging: experimental validation. *Photoacoustics*. **8**, 48–58 (2017). <https://doi.org/10.1016/j.pacs.2017.09.001>
- P Beard, Biomedical photoacoustic imaging. *Interface Focus*. **1**, 602–631 (2011)
- RLP van Veen, HJCM Sterenborg, A Pifferi, A Torricelli, R Cubeddu, in *Biomedical Topical Meeting*. Determination of VIS-NIR absorption coefficients of mammalian fat, with time- and spatially resolved diffuse reflectance and transmission spectroscopy, (2004). ftp://physics2.uni-corvinus.hu/FFirtha/Articles/Meat/2003_beeff%20fat-NIR.pdf
- ER Hill, W Xia, DI Nikitichev, K Gurusamy, PC Beard, DJ Hawkes, BR Davidson, AE Desjardins, in *Proc. SPIE 9708*. Interventional multi-spectral photoacoustic imaging in laparoscopic surgery, (2016), p. 97080. http://spie.org/Publications/Proceedings/Paper/10.1117/12.2208428?origin_id=x4323
- DR Bauer, R Olafsson, LG Montilla, RS Witte, in *Proc. SPIE 7564*. In vivo multi-modality photoacoustic and pulse echo tracking of prostate tumor growth using a window chamber, (2010), p. 75643. <https://pdfs.semanticscholar.org/3043/9456fcfb67c328d528c8d093440ee16d8982.pdf>
- R Su, AS Ermilov, AV Liopo, AA Oraevsky, in *Proc. SPIE 8223*. Photoacoustic 3D visualization of changes in physiological properties of mouse tissues from live to postmortem, (2012), pp. 14–21. http://www.tomowave.com/wp-content/uploads/7_2012_spie_postmortem.pdf
- J Glatz, NC Deliolanis, A Buehler, D Razansky, V Ntziachristos, Blind source unmixing in multi-spectral photoacoustic tomography. *Opt. Express*. **19**(4), 3175–3184 (2011)
- K Jansen, M Wu, AFW van der Steen, G van Soest, Lipid detection in atherosclerotic human coronaries by spectroscopic intravascular photoacoustic imaging. *Opt. Express*. **21**(18), 21472–21484 (2013)
- B Wang, J Su, J Amirian, SH Litovsky, R Smalling, S Emelianov, in *Proceedings of IEEE Engineering in Medicine and Biology Society Conference (EMBC, 2009)*. On the possibility to detect lipid in atherosclerotic plaques using intravascular photoacoustic imaging, (2009), pp. 4767–4770. <https://ieeexplore.ieee.org/document/5334213?denied>
- S Mallidi, J Tam, T Larson, A Karpouk, K Sokolov, S Emelianov, in *Proceedings of IEEE International Ultrasonics Symposium (IEEE, 2008)*. Selective detection of cancer using spectroscopic photoacoustic imaging and bioconjugated gold nanoparticles, (2008), pp. 578–581. <https://ieeexplore.ieee.org/document/4803640?denied>
- S Mure, T Grenier, DS Meier, CRG Guttman, H Benoit-Cattin, Unsupervised spatio-temporal filtering of image sequences. a mean-shift specification. *Pattern Recogn. Lett.* **68**(1), 48–55 (2015)
- A Dolet, F Varray, S Mure, T Grenier, Y Liu, Z Yuan, P Tortoli, D Vray, in *Proceedings of IEEE International Ultrasonics Symposium (IEEE, 2016)*. Spatial and spectral regularization for multispectral photoacoustic image clustering, (2016). <https://doi.org/10.1109/ULTSYM.2016.7728439>
- E Mercep, XL Dean-Ben, D Razansky, Combined pulse-echo ultrasound and multispectral photoacoustic tomography with a multi-segment detector array. *IEEE Trans. Med. Imaging*. **36**(10), 2129–2137 (2017)
- WK Pratt, *Digital image processing*. (Wiley, 1978). ISBN: 9780471018889
- LR Dice, Measures of the amount of ecologic association between species. *Ecology*. **26**(3), 297–302 (1945)
- S Li, B Montcel, Z Yuan, W Liu, D Vray, Multigrid-based reconstruction algorithm for quantitative photoacoustic tomography. *Biomed. Opt. Express*. **6**(7), 2424–2434 (2015)
- M Jeon, W Song, E Huynh, J Kim, J Kim, BL Helfeld, BYC Leung, DE Goertz, G Zheng, J Oh, JF Lovell, C Kim, Methylene blue microbubbles as a model dual-modality contrast agent for ultrasound and activatable photoacoustic imaging. *J. Biomed. Opt.* **19**(1), 16005 (2014)