



**HAL**  
open science

# A Survey of State-Action Representations for Autonomous Driving

Edouard Leurent

► **To cite this version:**

Edouard Leurent. A Survey of State-Action Representations for Autonomous Driving. 2018. hal-01908175

**HAL Id: hal-01908175**

**<https://hal.science/hal-01908175>**

Preprint submitted on 29 Oct 2018

**HAL** is a multi-disciplinary open access archive for the deposit and dissemination of scientific research documents, whether they are published or not. The documents may come from teaching and research institutions in France or abroad, or from public or private research centers.

L'archive ouverte pluridisciplinaire **HAL**, est destinée au dépôt et à la diffusion de documents scientifiques de niveau recherche, publiés ou non, émanant des établissements d'enseignement et de recherche français ou étrangers, des laboratoires publics ou privés.

# A Survey of State-Action Representations for Autonomous Driving

Edouard Leurent<sup>1,2,3</sup>, Yann Blanco<sup>3</sup>, Denis Efimov<sup>2</sup>, and Odalric-Ambrym Maillard<sup>1</sup>

<sup>1</sup>Inria Lille Nord Europe – SequeL Team

<sup>2</sup>Inria Lille Nord Europe – Non-A Team

<sup>3</sup>Renault Group

## Contents

<b>1</b>	<b>Representing the vehicles</b>	<b>2</b>
1.1	Encodings	2
1.1.1	Continuous coordinates	2
1.1.2	Discrete coordinates	3
1.1.3	Spatial grid	4
1.2	Coordinates systems	6
1.2.1	Cartesian coordinates	6
1.2.2	Polar coordinates	6
1.2.3	Lane-centric coordinates	7
1.3	Camera images	8
1.4	Other features	9
1.4.1	Intentions	9
1.4.2	Lateral features	9
1.4.3	Longitudinal features	9
1.5	Full trajectory	10
<b>2</b>	<b>Representing the environment</b>	<b>10</b>
2.1	Cartesian coordinates	10
2.2	Cartesian occupancy grid	10
2.3	Polar occupancy grid	11
2.4	Camera images	11
2.5	Road structure	11
2.6	Traffic laws	12
<b>3</b>	<b>The action space</b>	<b>12</b>
3.1	Continuous actions	12
3.2	Discrete actions	12
3.3	Temporal abstraction	13
<b>4</b>	<b>Conclusion</b>	<b>14</b>

## Abstract

In this survey, we list different representations for the state and action spaces of a driving policy. We focus on the literature dedicated to decision making rather than perception, and on the context of autonomous driving only.

To formulate the autonomous driving problem as a Markovian Decision Process, one must first describe the state of the system and its encoding in a space  $\mathcal{S}$ . We list the main state representations found in the literature in sections 1 and 2. Then, one must define a set of actions  $\mathcal{A}$  that gives the agent control over the state dynamics, which we explore in section 3.

# 1 Representing the vehicles

## 1.1 Encodings

### 1.1.1 Continuous coordinates

A vehicle driving on a road can be described in the most general way by its continuous position, heading and velocity.

$$s = [x \quad y \quad \psi \quad v]^T \tag{1}$$

The composite state (or joint-state) of a road traffic with one ego-vehicle (denoted  $X_0$ ) and  $N$  other vehicles can then be described by the set of the states of all vehicles.

$$s = \{s_k\}_{k \in [0, N]} \tag{2}$$

The reference frame can be absolute, but as the behaviour followed by the ego-vehicle should be the same at any given location and only depend on the relative position of entities around it, it is common to use an ego-centric reference frame. It allows to concentrate the distribution of visited states around the origin in both position, heading and velocity space, as other vehicles are often close to the ego-vehicle and with similar speed and heading. This reduces the region of state-space in which the policy must perform.

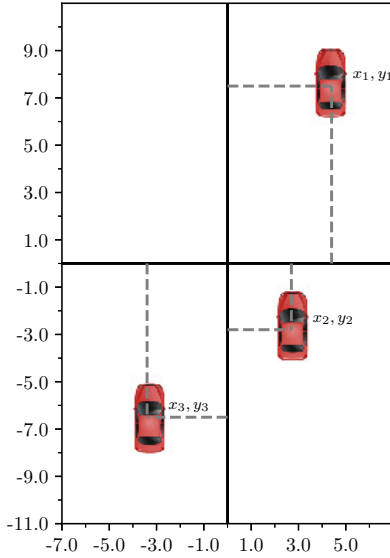


Figure 1: The continuous kinematics representation

The size of this state-space is  $\mathbb{R}^{4(N+1)}$ .

This representation is used in (Forbes et al., 1995; Wheeler et al., 2015; Bai et al., 2015; Gindele et al., 2015; Song et al., 2016; Sunberg et al., 2017; Paxton et al., 2017; Lee and Seo, 2017; Shalev-Shwartz et al., 2017; Galceran et al., 2017; Chen et al., 2017; Paxton et al., 2017).

In some cases, this representation is used only for memory storage though the surrounding vehicles are not actually part of the optimized state, but rather used to define constraints or penalties regarding the ego-vehicle state. See, for instance, Levine and Koltun (2012); Ziegler et al. (2014); Qian et al. (2016); Sadigh et al. (2016).

### 1.1.2 Discrete coordinates

To reduce the size of the state-space, any continuous variable  $z \in \mathbb{R}$  of the state can be quantized to its closest value within a discrete and often finite set  $Z = \{z_i\}$ .

This shrinks the state-space from  $\mathbb{R}^{4(N+1)}$  to a discrete set of size  $|I|^{4(N+1)}$ , where  $I$  is the union quantization of the state-space of a single vehicle.

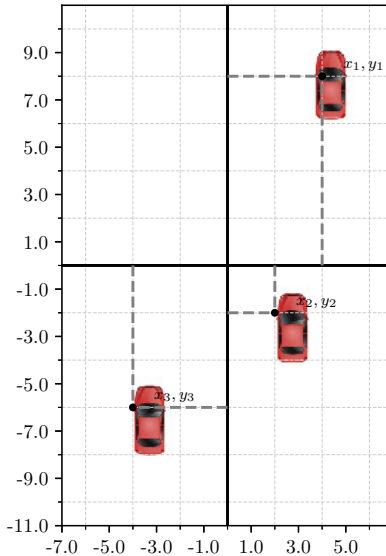


Figure 2: The discrete kinematics representation

Most of the time, the quantization is chosen uniform for simplicity, as in (Gómez Plaza et al., 2009; Brechtel et al., 2011; Du et al., 2010; Bandyopadhyay et al., 2013; Loiacono et al., 2010; Osipychyev et al., 2015; Rehder et al., 2017a).

However, it is often the case with uniform quantization that the state-space either remains too large or becomes too coarse. To address this issue, Tehrani et al. (2015) adapt the size of the grid cells with the relative speed of each other vehicles, while Brechtel et al. (2014) suggest to automatically learn a sufficient and efficient discrete partition of the continuous space for a given task.

### 1.1.3 Spatial grid

The two encodings described so far are efficient in the sense that they use the smallest quantity of information necessary to represent the scene. However, they lack two important properties:

#### 1. Permutation invariance

We expect a driving policy not to be dependent on the order in which all vehicles in the traffic are listed. Ideally, this property should derive naturally from an architectural design and not rely only on data augmentation to cover the  $N!$  possible permutations of any given traffic state. That is, if we denote the traffic state representation as  $s = (X_1, \dots, X_N)$  and the policy as  $\pi(\cdot|s)$ , we require that

$$\pi(\cdot|(s_1, \dots, s_N)) = \pi(\cdot|(s_{\sigma(1)}, \dots, s_{\sigma(N)})) \quad \forall \sigma \in \mathfrak{S}_N \quad (3)$$

This desired property can be implemented within the policy architecture, as done in (Chen et al., 2017) or (Qi et al., 2016), but also directly in the state representation.

## 2. Dependency on the number of vehicles

In these formalizations, the size of the state depends of the number  $N$  of vehicles considered. For the sake of function approximation which often expects constant-sized inputs, and in order to avoid having a growing computational complexity when more vehicles are on the road, we may wish to get rid of this dependency.

These limitations are addressed by the occupancy grid representation, that uses a different approach for representing a quantity  $z$  localized in a space  $X$ . Instead of explicitly representing spatial dimensions as variables  $x$  within a state  $\{s_k = (x_k, z_k)\}_{k \in [0, N]}$  indexed on the vehicles, they are represented implicitly through the layout of several variables  $z_i$  organized in a grid-like structure indexed on a quantization of the space  $X$ .

$$X = \bigoplus_{i \in I} X_i \quad (4)$$

$$s_i = \begin{cases} z_k & \text{if } \exists k \in [1, N] \text{ s.t. } x_k \in X_i \\ 0 & \text{else} \end{cases} \quad (5)$$

The  $z$  variable often corresponds to mere presence information (0-1) but can also include additional channels such as heading and velocity.

The size of this state space is then  $|Z|^{|I|}$ .

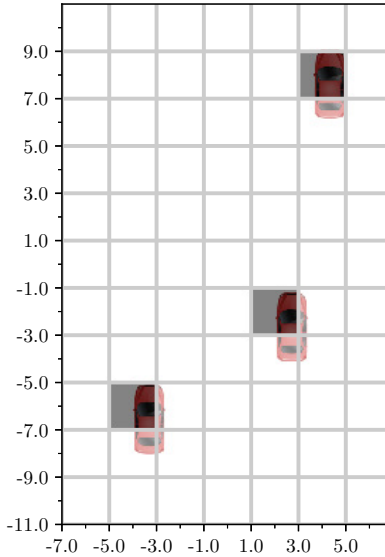


Figure 3: The occupancy grid representation

This representation is used in (Mukadam et al., 2018; Isele et al., 2017; Fridman et al., 2018).

## 1.2 Coordinates systems

### 1.2.1 Cartesian coordinates

In most cases, the vehicles locations are expressed in a Cartesian coordinates system, as seen in 1.1.

### 1.2.2 Polar coordinates

By using a coordinate system polarized at the ego-vehicle, the scene becomes explicitly described from its point of view. This scheme is consistent with the data format of many sensors in the autonomous driving industry, such as LIDARs and radars.

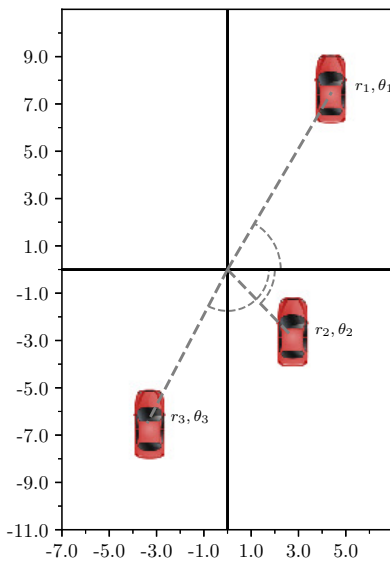


Figure 4: The polar coordinates representation

**Angular sector indexing** Following the grid representation introduced in 1.1.3, instead of directly indexing on the different vehicles, one can bin them according to the (discretized) angular sector they belong in. By keeping a constant number of vehicle described in each angular sector (usually only one: the closest), the state representation size becomes independent on the number of vehicles, at the expense of removing some of the vehicles from the state, usually the further ones.

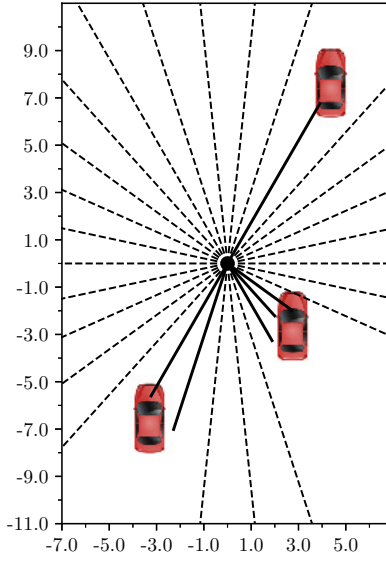


Figure 5: The polar grid representation

Other features can be added as additional channels, such as the velocity, type of vehicle, etc.

This representation is used in (Hadsell et al., 2009; Cardamone et al., 2009; Sharifzadeh et al., 2016; Kuefler et al., 2017; Pfeiffer et al., 2017a; Plessen, 2017; Bhattacharyya et al., 2018)

### 1.2.3 Lane-centric coordinates

But one can observe that the tactical-level decision making policy should also be the same on a straight or curved road, and that only low-level motion planning needs to take the shape of the road into account. Hence, instead of the Euclidean coordinate system, a lane-centric coordinate system can be used where each vehicle is described in terms of its current lane and Frenet coordinate within this lane.



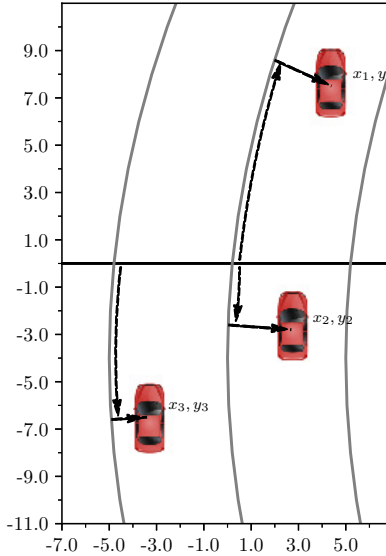


Figure 6: The lane-centric representation

This representation is used in (Coulom, 2002) for car racing, in (Paxton et al., 2017; Wang and Chan, 2017) for highway driving scenarios, and in (Shalev-Shwartz et al., 2016a) for a roundabout insertion scenario. In (Riedmiller et al., 2007), the track-coordinate system is used to represent not only the vehicle’s position but also heading and yaw rate, which are relative to the lane curve heading and yaw rate at the projected position.

**Lane indexing** Again, a grid encoding can be chosen so as to index directly the lanes on the road and describe where the vehicles are located in each lane. The state size can be made independent of the number of vehicles in the scene by keeping a constant finite number of vehicles in each lane (e.g. front, middle, rear).

This representation is used in (Abbeel and Ng, 2004; Wei et al., 2010; Levine et al., 2011; Ulbrich and Maurer, 2013; Wang and Chan, 2017; Althé and Fortelle, 2017; Bhattacharyya et al., 2018), and is studied in (Chen et al., 2015) where the authors refer to it as a *direct perception approach* that leverages *affordance indicators* of the road situation.

Li et al. (2017) uses a quantization of positions in the lanes as close/nominal/far and of velocities as approaching/stable/moving away. Likewise, Wray et al. (2017) use a semantic quantization tailored for handling intersections: approaching/at/edged/inside/ empty.

### 1.3 Camera images

The information of presence and location of other vehicles can also be encoded directly through a raw camera image.

An image can be taken from different viewpoints, such as a top-view camera like in (Liu et al., 2018), or a front-view camera like in (Mnih et al., 2015) (see *Enduro*), and also represented in different spaces (RGB, HSV, etc.).

In this setting, almost no preprocessing of the raw data is needed to obtain the state representation. However, the price to pay for this lack of abstraction is high-dimensionality.

A transition model is also rarely available for planning as it requires solving the difficult task of video prediction. (Finn and Levine, 2017) is one of the few attempts to learn a predictive model of future video frames and use it for motion planning.

## 1.4 Other features

### 1.4.1 Intentions

The future trajectory of a vehicle often depends on the internal intentions of its driver. In order to model this dynamics in the Markov Decision Process framework, the intentions must be made part of the vehicle state, even though they are rarely directly observable.

Bai et al. (2015) and Bandyopadhyay et al. (2013) both add to the state of each agent in the scene an unobserved discrete intention, representing their desired goal location coordinates. In (Song et al., 2016), semantic goal locations are used instead of coordinates to represent agents intentions at intersections, among `{straight, left, right, stop}`.

Instead of the mere destination, other properties of the agents decision process can also be represented, such as their politeness and aggressivity in (Sunberg et al., 2017).

Even entire behaviours executed by the agents can be listed and represented in the state. This is what Driggs-Campbell and Bajcsy (2015) call *intent modes* and implement with the examples of `lane keeping`, `preparing to lane change`, and `lane changing`. Forbes et al. (1995) suggest to use Bayesian inference to predict these modes of behaviours based on the observations (e.g. predict a lane change when observing a blinking turn signal), just like Galceran et al. (2017) who focus on detecting changepoints between several policies.

Finally, the other agents intentions can be modelled with a high degree of expressive power as an objective function, under the hypothesis that the agents are rational and execute near-optimal policies. Sadigh et al. (2016) and Huang et al. (2017) show that this approach can be used in pair with a dynamics model to predict future human actions, which yields a closed loop predictive model.

### 1.4.2 Lateral features

Ulbrich and Maurer (2013) append to the state additional rule-based features, such as whether performing a lane change now is possible, and whether it is beneficial. However, it is more common to see this information stored in the set of actions available in the state and their action-values, like in (Mukadam et al., 2018) or (Liu et al., 2018) where a heuristic rule-based action masker filters out apparently unsafe actions.

### 1.4.3 Longitudinal features

Driving at high speed into a distant obstacle is quite similar to driving at low speed into a close obstacle. In both situation, what matters for decision making is the *time-to-collision* (TTC): the decision of braking or steering out of the way has to be taken before the TTC is lower than the duration of these actions.

The longitudinal time-to-collision is defined for all  $i \in [1, N]$  as

$$\tau_i = -\frac{x_i - x_0}{v_i - v_0} \tag{6}$$

Another related indicator is the *time gap*, defined as the time needed for the ego-vehicle to reach a vehicle’s current position.

$$\tau_i = -\frac{x_i - x_0}{v_0} \quad (7)$$

These features are used in (Driggs-Campbell and Bajcsy, 2015; Ulbrich and Maurer, 2013; Isele et al., 2017; Alché and Fortelle, 2017; Liu et al., 2018; Bhattacharyya et al., 2018).

## 1.5 Full trajectory

Instead of only considering the current timestep in the state representation, one can decide to work directly at the scale of entire trajectories. Thus, Kretzschmar et al. (2014, 2016); Pfeiffer et al. (2016) use cubic splines to represent the future trajectory of each moving entity. However, this representation is not suited for sequential decision making but rather for direct optimization of the objective over the trajectory representation. The main advantage of this approach is the ability to work in continuous time instead of discrete time, which can be very useful to access infinitesimal variations of the kinematics, such as the instantaneous acceleration or jerk, which are relevant in the assessment of comfort. This is the case of Kuderer et al. (2015) who use this framework to infer comfortable driving styles from human demonstrations.

## 2 Representing the environment

The policy needs to take into account its static environment: the location of the obstacles, of the drivable space, and information regarding traffic laws.

### 2.1 Cartesian coordinates

To represent the location of obstacles on the road around the ego-vehicle, a first approach is simply to list each obstacle and store their location and geometry (spherical, parallelepiped, etc.) in a tuple.

This representation is compact in the sense that free space is not stored in memory. However, it has varying size and lacks spatial structure in the data structure.

It is used by Abbas et al. (2014).

### 2.2 Cartesian occupancy grid

To introduce spacial structure and fixed size in the representation of obstacles, the same trick as in 1.1.3 can be used: convert the tuple of coordinates into a spatial grid.

This representation is used by (Ziebart et al., 2009; Richter et al., 2014; Chen et al., 2016; Tamar et al., 2016; Shankar et al., 2016; Wulfmeier et al., 2016; Sallab et al., 2017; Rehder et al., 2017a; Hoermann et al., 2017; Williams et al., 2017; Mukadam et al., 2018; Rhinehart et al., 2018).

The representation choice can be different for dynamic and static obstacles, as shown by Pfeiffer et al. (2017a) who use a Cartesian grid to encode the static environment and a polar grid for the location of pedestrians.

## 2.3 Polar occupancy grid

Just like in 1.2.2, the polar coordinate system can also be used to describe the environment. Thus, Pfeiffer et al. (2017b); Koutník et al. (2013); Manuelli and Florence (2015); Plessen (2017) and Trehard et al. (2015) describe the shape of the road as ranges to obstacles in a set of angular sectors.

This representation is very close to the natural data structure produced by LIDAR sensors or depth cameras, that measure the distance along rays in every direction.

## 2.4 Camera images

As mentioned in 1.3, when using raw camera images we benefit from a very rich information feed. It contains information about neighbour vehicles, but also concerning the shape of the road, the location of the lanes and static obstacles. Hence, it can be used as a simple and rich representation of the environment.

The most commonly-occurring setting is the front-view camera, used in (Pomerleau, 1989; Cardamone et al., 2009; Ross et al., 2011; Koutník et al., 2013; Bojarski et al., 2016; Yu et al., 2016; Xu et al., 2016; Sallab et al., 2016; Eraqi et al., 2017; Koppula, 2017; Sallab et al., 2017; Codevilla et al., 2017; Rehder et al., 2017c; Rezagholizadeh and Haidar, 2018).

But the images can also come from a top-view camera, as seen in (Bagnell et al., 2010; Rehder et al., 2017b,c).

Instead of using the raw images, a preprocessing step can be considered, usually for the sake of semantic segmentation to identify the drivable area of the image, like in (Hadsell et al., 2009; Barnes et al., 2017). Another objective of preprocessing can also be the transfer of skills learnt in simulation to real use cases, as Pan et al. (2017) who use style transfer to convert the simulator images distribution to a realistic images distribution that is fed to the driving policy during its training, so as to improve robustness in real usage. Sometimes, this preprocessing is not used as a transformation of the observation but rather as an auxiliary task. Thus, Eraqi et al. (2017) performs semantic segmentation of camera images and shows that it improves performance on the main task of steering angle regression.

Finally, camera images being high-dimensional observations, compressed representations can be learnt explicitly through the use of unsupervised learning and auto-encoders, such as in (Ha and Schmidhuber, 2018; Kendall et al., 2018).

## 2.5 Road structure

The knowledge of the road network provides meaningful information. For instance, Van Den Heuvel et al. (2013) describes the track curve through its orientation, width and lateral offset with respect to a finite set of positions along a planned route. Seff and Xiao (2016) extract from camera images features describing the road structure, such as the drivable directions and distance to intersections.

However, it is rarely included directly in the state-space.

Liniger et al. (2014); Song et al. (2016); Wray et al. (2017) use it as static reference information that defines constraints on the state-space, such as forbidden error states. In (Shalev-Shwartz et al., 2017), the road geometry is used to assess responsibility in a potential collision, and to forbid only collision states where the blame is on the ego-vehicle.

More commonly, it is used to define the reward function. For instance, more reward can be assigned to driving in some parts of the road, typically along a known navigation route and in the center of the lane, as in (Levine and Koltun, 2012; Liu et al., 2018). Likewise

Abbeel et al. (2008); Ziebart et al. (2008); Stiller and Ziegler (2012); Gindele et al. (2015) represent the road network as a graph and use it to evaluate the cost of the ego-vehicle’s planned trajectory. Road boundaries can also be described by curve equations, such as in (Williams et al., 2018).

The downside of excluding road information from the state is that at test time the policy cannot rely on this information, so the optimal policy is tailored for a specific road configuration and has to be computed again whenever it changes. As a consequence, the trajectory optimization often has to be performed online in this setting.

## 2.6 Traffic laws

In addition to the road structure, traffic laws can also be encoded in the state representation. For instance, Paxton et al. (2017) adds in the state-space some features describing the current lane’s speed limit, whether vehicle has entered a stop region or has the right of way. These properties can be extracted from camera images in a perception module, like in (Seff and Xiao, 2016) that learns to differentiate between one-way vs two-way roads and whether the vehicle is driving in the wrong way.

Again, these traffic laws can be used as reward rather than directly in the state. Liu et al. (2018) uses them to penalize entering intersections when the traffic lights are red, or driving in opposite or biking lanes. As the policy has no access to this information at inference time, it has to be optimized in an online manner to stay consistent with the evolution of these data.

## 3 The action space

We now study the different action spaces used in the driving policy literature.

### 3.1 Continuous actions

When driving a car, there are only a few actuators to consider: the steering wheel angle, the acceleration and brake pedals, and the gearbox. The different pedals and gears are often merged into a single acceleration command for simplicity.

Hence the canonic continuous action-space is composed of the longitudinal acceleration and steering angle, and often used for low-level control tasks, such as (Sadigh et al., 2016; Cardamone et al., 2009; Ross et al., 2011; Levine and Koltun, 2012; Garcia and Fernandez, 2012; Koutník et al., 2013; Van Den Heuvel et al., 2013).

Higher-level representations can also be used if we ignore some parts of the dynamics, as showed by Chen et al. (2017) who act directly with longitudinal and lateral velocities.

Finally, only one of these two actions can be considered if we assume that the other one is chosen according to a separate policy. For instance, Hester and Stone (2006); Shalev-Shwartz et al. (2016a) only consider the choice of continuous acceleration while assuming that a lane keeping lateral controller is available and independently sets the steering angle.

### 3.2 Discrete actions

To reduce complexity and accelerate the policy optimization, it is common to prefer a discrete action-space to a continuous one. From there, it is straight-forward to discretize the original continuous action-space by binning ranges of actions together.

The binning is often chosen uniform for simplicity, like in (Isele et al., 2017; Pyeatt and Howe, 1998; Gómez Plaza et al., 2009).

It is often the case that only a small number of possible actions are chosen. For instance, Bandyopadhyay et al. (2013); Bai et al. (2015); Song et al. (2016) use only three possible acceleration values: {decelerate  $a = -\alpha$ , maintain velocity  $a = 0$ , accelerate  $a = +\alpha$ }.

However, a uniform binning often suffers from being either too coarse or too high-dimensional. As the distribution of steering angle is heavily concentrated around the center, Xu et al. (2016) suggest to perform the binning in a log-space or even according to the data distribution, in order to have a fine sampling only around frequent actions.

Again, only one dimension can be considered. Brechtel et al. (2014); Bandyopadhyay et al. (2013); Bai et al. (2015); Song et al. (2016) focus on choosing the longitudinal acceleration while assuming that a lateral control tracks a pre-planned trajectory, like simple lane keeping or following the route at intersections.

As noted by Sallab et al. (2016) who compares the continuous and discrete settings, the discretization implies the introduction of discontinuities in the commands, which can lead to instability and jerky trajectories. One way to address this is to assume that discrete actions are all abstract and imply an underlying smooth continuous control policy. Alternatively we can use commands corresponding to higher order derivatives of the dynamics, so as to benefit from the smoothing properties of the integration in the controlled system. This is the case of (Riedmiller et al., 2007; Gindele et al., 2015; Manuelli and Florence, 2015) and (Huang et al., 2017) who use the steering rate or heading rate instead of the steering angle to generate smoother trajectories.

### 3.3 Temporal abstraction

The actions presented so far are commands affecting the car dynamics, which means they must be updated at a high frequency, in the order of 10Hz. In (Shalev-Shwartz and Shashua, 2016; Shalev-Shwartz et al., 2016b) and (Shalev-Shwartz et al., 2017), the authors argue that due to this dense time resolution of decision making, the estimation of the value function faces a very small signal-to-noise ratio as its variance grows linearly with the time horizon in terms of actions count, which makes training difficult.

To address this issue, some approaches such as (Mnih et al., 2015) or (Brechtel et al., 2011) suggest repeating primitive actions for several steps to reduce increase their duration and reduce the time resolution, hence decreasing the variance during training.

A more principled approach is proposed by Sutton et al. (1999): the options framework. In this setting, a set of sub-policies over primitive actions called options are used as high-level decisions by a policy over options. The options are often provided by the system designer as a way to introduce prior domain knowledge. Though they reduce the expressive power of the policy compared to primitive actions, they still allow to define complex behaviours while being sample-efficient through temporally extended actions.

In the context of autonomous driving, there are some options choices that are widely shared among the community.

Indeed, the lateral behaviour of the ego-vehicle is often handled by three lane change options: {change to left lane, change to right lane, stay on current lane}. This is the case in (Abbeel and Ng, 2004; Ulbrich and Maurer, 2013; Osipychov et al., 2015; Sharifzadeh et al., 2016; Li et al., 2017; Mukadam et al., 2018). Additionally, Ulbrich and Maurer (2015) also consider the behaviours of preparing a lane change by edging on the side of the lane, and indicating a lane change with the blinker. Galceran et al. (2017) also introduces

separate options for handling turns at intersections: `{turn right, turn left}`. Specific manoeuvres can also be used in the presence of obstacles, such as a pass behavior learnt in (Pyeatt and Howe, 1998) and an overtake behavior in (Loiacono et al., 2010).

The longitudinal behavior can also be dealt with by using options. They can be used to ensure safety, like the `brake` option of (Sunberg et al., 2017) which applies a maximum safe acceleration with respect to the front vehicle. Isele et al. (2017) and Wray et al. (2017) define three options for coming to a stop at an intersection, waiting or edging slightly, and proceeding through the intersection. They recognize that these options are less expressive than a set of discrete acceleration, but the resulting policy is easier to learn. It is also possible to use open-loop policies, like Wei et al. (2010) who define a set of acceleration profiles, such as: *"keep constant acceleration for  $t_1$  seconds, then keep constant velocity for another  $t_2$  seconds"*.

Finally, options combining both lateral and longitudinal goals can be used, like in (Shalev-Shwartz et al., 2017) where  $10^4$  semantic actions are generated by an option graph specifying both the lateral goal on lanes and longitudinal goal of relative positioning with respect to other vehicles and speed profile. In (Paxton et al., 2017) options generated by reinforcement learning as optimal policies with respect to specific manually-defined rewards to favour multiple behaviour such as following the front vehicle, changing lane only when it is safe, passing a vehicle, or stopping at an intersection. In (Codevilla et al., 2017), a low-level control policy acting over acceleration and steering angle is modulated by a high-level conditioning specifying the desired route at an intersection, among `{left, right, straight}`.

## 4 Conclusion

In this survey, we listed the most common representations for state and actions used in the autonomous driving literature. There is a wide variety of formulations with different properties in terms of size (large or small, fixed or variable), continuousness or discreteness, invariance to permutations, characteristic time-scale, ease to model the dynamics, smoothness of the state-action mapping, etc. There is no best representation, and one must be chosen by considering many aspects of the intended use-case.

## References

- Muhammad Awais Abbas, Ruth Milman Ieee, J Mikael, and Eklund Smieeee. Obstacle Avoidance in Real Time with Nonlinear Model Predictive Control of Autonomous Vehicles. 2014.
- Pieter Abbeel and Andrew Y. Ng. Apprenticeship learning via inverse reinforcement learning. In *Twenty-first international conference on Machine learning - ICML '04*, 2004. ISBN 1581138285. doi: 10.1145/1015330.1015430.
- Pieter Abbeel, Dmitri Dolgov, Andrew Y Ng, and Sebastian Thrun. Apprenticeship Learning for Motion Planning, with Application to Parking Lot Navigation. 2008.
- Florent Alché and Arnaud De La Fortelle. An LSTM Network for Highway Trajectory Prediction. pages 353–359, 2017.

- James Bagnell, David Bradley, David Silver, Boris Sofman, and Anthony Stentz. Learning for autonomous navigation. *IEEE Robotics and Automation Magazine*, 17(2):74–84, 2010. ISSN 10709932. doi: 10.1109/MRA.2010.936946.
- Haoyu Bai, Shaojun Cai, Nan Ye, David Hsu, and Wee Sun Lee. Intention-Aware Online POMDP Planning for Autonomous Driving in a Crowd. 2015.
- Tirthankar Bandyopadhyay, Kok Sung Won, Emilio Frazzoli, David Hsu, Wee Sun Lee, and Daniela Rus. Intention-Aware Motion Planning. 2013.
- Dan Barnes, Will Maddern, and Ingmar Posner. Find your own way: Weakly-supervised segmentation of path proposals for urban autonomy. *Proceedings - IEEE International Conference on Robotics and Automation*, pages 203–210, 2017. ISSN 10504729. doi: 10.1109/ICRA.2017.7989025.
- Raunak P. Bhattacharyya, Derek J. Phillips, Blake Wulfe, Jeremy Morton, Alex Kuefler, and Mykel J. Kochenderfer. Multi-Agent Imitation Learning for Driving Simulation. 2018.
- Mariusz Bojarski, Davide Del Testa, Daniel Dworakowski, Bernhard Firner, Beat Flepp, Praseon Goyal, Lawrence D. Jackel, Mathew Monfort, Urs Muller, Jiakai Zhang, Xin Zhang, Jake Zhao, and Karol Zieba. End to End Learning for Self-Driving Cars. 2016.
- Sebastian Brechtel, Tobias Gindele, and Rudiger Dillmann. Probabilistic MDP-behavior planning for cars. In *IEEE Conference on Intelligent Transportation Systems, Proceedings, ITSC*, 2011. ISBN 9781457721984.
- Sebastian Brechtel, Tobias Gindele, and Rüdiger Dillmann. Probabilistic Decision-Making under Uncertainty for Autonomous Driving using Continuous POMDPs. 2014.
- Luigi Cardamone, Daniele Loiacono, and Pier Luca Lanzi. Evolving Competitive Car Controllers for Racing Games with Neuroevolution. 2009.
- Chenyi Chen, Ari Seff, Alain Kornhauser, and Jianxiang Xiao. DeepDriving: Learning Affordance for Direct Perception in Autonomous Driving. 2015. URL <http://deepdriving.cs.princeton.edu>.
- Yu Fan Chen, Shih-yuan Liu, Miao Liu, Justin Miller, and Jonathan P How. Motion Planning with Diffusion Maps. 2016.
- Yu Fan Chen, Michael Everett, Miao Liu, and Jonathan P How. Socially Aware Motion Planning with Deep Reinforcement Learning. 2017.
- Felipe Codevilla, Matthias Müller, Alexey Dosovitskiy, Antonio López, and Vladlen Koltun. End-to-end Driving via Conditional Imitation Learning. 2017. URL <http://arxiv.org/abs/1710.02410>.
- Rémi Coulom. *Apprentissage par renforcement utilisant des réseaux de neurones, avec des applications au contrôle moteur*. PhD thesis, 2002.
- Katherine Driggs-Campbell and Ruzena Bajcsy. Identifying Modes of Intent from Driver Behaviors in Dynamic Environments. *IEEE Conference on Intelligent Transportation Systems, Proceedings, ITSC*, 2015-October:739–744, 2015. doi: 10.1109/ITSC.2015.125.



- Yanzhu Du, David Hsu, Hanna Kurniawati, Wee Sun Lee, Sylvie CW Ong, and Shao Wei Png. A POMDP Approach to Robot Motion Planning under Uncertainty. 2010. URL <http://motion.comp.nus.edu.sg/>.
- Hesham M. Eraqi, Mohamed N. Moustafa, and Jens Honer. End-to-End Deep Learning for Steering Autonomous Vehicles Considering Temporal Dependencies. (Nips), 2017. URL <http://arxiv.org/abs/1710.03804>.
- Chelsea Finn and Sergey Levine. Deep visual foresight for planning robot motion. In *Proceedings - IEEE International Conference on Robotics and Automation*, 2017. ISBN 9781509046331. doi: 10.1109/ICRA.2017.7989324.
- Jeff Forbes, Tim Huang, Keiji Kanazawa, and Stuart Russell. The BATmobile: Towards a Bayesian Automated Taxi. 1995.
- Lex Fridman, Benedikt Jenik, and Jack Terwilliger. DeepTraffic: Driving Fast through Dense Traffic with Deep Reinforcement Learning. pages 1–8, 2018. URL <http://arxiv.org/abs/1801.02805>.
- Enric Galceran, Alexander G. Cunningham, Ryan M. Eustice, and Edwin Olson. Multipolicy decision-making for autonomous driving via changepoint-based behavior prediction: Theory and experiment. *Autonomous Robots*, 2017. ISSN 15737527. doi: 10.1007/s10514-017-9619-z.
- Javier Garcia and Fernando Fernandez. Safe exploration of state and action spaces in reinforcement learning. *Journal of Artificial Intelligence Research*, 45:515–564, 2012. ISSN 10769757. doi: 10.1613/jair.3761.
- Tobias Gindele, Sebastian Brechtel, and Rudiger Dillmann. Learning driver behavior models from traffic observations for decision making and planning. *IEEE Intelligent Transportation Systems Magazine*, 7(1):69–79, 2015. ISSN 19391390. doi: 10.1109/MITS.2014.2357038.
- Mariano Gómez Plaza, Tomás Martínez-Marin, Sebastián Sánchez Prieto, and Daniel Meziat Luna. Integration of cell-mapping and reinforcement-learning techniques for motion planning of car-like robots. *IEEE Transactions on Instrumentation and Measurement*, 2009. ISSN 00189456. doi: 10.1109/TIM.2009.2016880.
- David Ha and Jürgen Schmidhuber. World Models. 2018. doi: 10.5281/zenodo.1207631. URL <http://arxiv.org/abs/1803.10122>.
- Raia Hadsell, Pierre Sermanet, Jan Ben, Ayse Erkan, Marco Scoffier, Koray Kavukcuoglu, Urs Muller, and Yann LeCun. Learning long-range vision for autonomous off-road driving. *Journal of Field Robotics*, 26(2):120–144, 2009. ISSN 15564959. doi: 10.1002/rob.20276.
- Todd Hester and Peter Stone. TEXPLORE: Real-Time Sample-Efficient Reinforcement Learning for Robots. 2006.
- Stefan Hoermann, Martin Bach, and Klaus Dietmayer. Dynamic Occupancy Grid Prediction for Urban Autonomous Driving: A Deep Learning Approach with Fully Automatic Labeling. 2017. URL <http://arxiv.org/abs/1705.08781>.

- Sandy H. Huang, David Held, Pieter Abbeel, and Anca D. Dragan. Enabling Robots to Communicate their Objectives. 2017. doi: 10.15607/RSS.2017.XIII.059. URL <http://arxiv.org/abs/1702.03465>.
- David Isele, Akansel Cosgun, Kaushik Subramanian, and Kikuo Fujimura. Navigating Intersections with Autonomous Vehicles using Deep Reinforcement Learning. 2017. URL <http://arxiv.org/abs/1705.01196>.
- Alex Kendall, Jeffrey Hawke, David Janz, Przemyslaw Mazur, Daniele Reda, John-mark Allen Vinh-dieu Lam, Alex Bewley, and Amar Shah. Learning to Drive in a Day. 2018.
- Skanda Koppula. Learning a CNN-based End-to-End Controller for a Formula Racecar. pages 2–6, 2017.
- Jan Koutník, Giuseppe Cuccu, Jürgen Schmidhuber, and Faustino Gomez. Evolving Large-Scale Neural Networks for Vision-Based TORCS. 2013.
- Henrik Kretzschmar, Markus Kuderer, and Wolfram Burgard. Learning to predict trajectories of cooperatively navigating agents. In *Proceedings - IEEE International Conference on Robotics and Automation*, 2014. ISBN 978-1-4799-3685-4. doi: 10.1109/ICRA.2014.6907442.
- Henrik Kretzschmar, Markus Spies, Christoph Sprunk, and Wolfram Burgard. Socially Compliant Mobile Robot Navigation via Inverse Reinforcement Learning. 2016.
- Markus Kuderer, Shilpa Gulati, and Wolfram Burgard. Learning Driving Styles for Autonomous Vehicles from Demonstration. 2015.
- Alex Kuefler, Jeremy Morton, Tim Wheeler, and Mykel Kochenderfer. Imitating Driver Behavior with Generative Adversarial Networks. 2017. doi: 10.1109/IVS.2017.7995721. URL <http://arxiv.org/abs/1701.06699>.
- Sang-Hyun Lee and Seung-Woo Seo. A Learning-Based Framework for Handling Dilemmas in Urban Automated Driving. 2017.
- Sergey Levine and Vladlen Koltun. Continuous Inverse Optimal Control with Locally Optimal Examples. *International Conference on Machine Learning (ICML)*, pages 41–48, 2012.
- Sergey Levine, Zoran Popovic, and Vladlen Koltun. Nonlinear Inverse Reinforcement Learning with Gaussian Processes. *Advances in Neural Information Processing Systems*, pages 19–27, 2011. URL <http://papers.nips.cc/paper/4420-nonlinear-inverse-reinforcement-learning-with-gaussian-processes>.
- Nan Li, Dave Oyler, Mengxuan Zhang, Yildiray Yildiz, Ilya Kolmanovsky, and Anouck Girard. Game-Theoretic Modeling of Driver and Vehicle Interactions for Verification and Validation of Autonomous Vehicle Control Systems. pages 1–13, 2017.
- Alexander Liniger, Alexander Domahidi, and Manfred Morari. Optimization-based autonomous racing of 1:43 scale RC cars. *Optimal Control Applications and Methods*, 2014.
- Jingchu Liu, Pengfei Hou, Lisen Mu, Yinan Yu, and Chang Huang. Elements of Effective Deep Reinforcement Learning towards Tactical Driving Decision Making. 2018. URL <https://arxiv.org/pdf/1802.00332.pdf>.

- Daniele Loiacono, Alessandro Prete, Pier Luca Lanzi, and Luigi Cardamone. Learning to overtake in TORCS using simple reinforcement learning. In *2010 IEEE World Congress on Computational Intelligence, WCCI 2010 - 2010 IEEE Congress on Evolutionary Computation, CEC 2010*, 2010. ISBN 9781424469109. doi: 10.1109/CEC.2010.5586191.
- Lucas Manuelli and Pete Florence. Reinforcement Learning for Autonomous Driving Obstacle Avoidance using LIDAR. 2015. URL <http://icri-ci.technion.ac.il/files/2017/05/16-Shai-Shalev-Schwartz-170509.pdf>.
- Volodymyr Mnih, Koray Kavukcuoglu, David Silver, Andrei A Rusu, Joel Veness, Marc G Bellemare, Alex Graves, Martin Riedmiller, Andreas K Fidjeland, Georg Ostrovski, Stig Petersen, Charles Beattie, Amir Sadik, Ioannis Antonoglou, Helen King, Dharmashan Kumar, Daan Wierstra, Shane Legg, and Demis Hassabis. Human-level control through deep reinforcement learning. 2015. doi: 10.1038/nature14236.
- Mustafa Mukadam, Akansel Cosgun, Alireza Nakhaei, and Kikuo Fujimura. Tactical Decision Making For Lane Changing With Deep Reinforcement Learning. pages 1–10, 2018.
- Denis Osipchev, Duy Tran, Weihua Sheng, Girish Chowdhary, and Ruili Zeng. Proactive MDP-based collision avoidance algorithm for autonomous cars. In *2015 IEEE International Conference on Cyber Technology in Automation, Control and Intelligent Systems, IEEE-CYBER 2015*, 2015. ISBN 9781479987290. doi: 10.1109/CYBER.2015.7288078.
- Xinlei Pan, Yurong You, Ziyang Wang, and Cewu Lu. Virtual to Real Reinforcement Learning for Autonomous Driving. 2017. URL <http://arxiv.org/abs/1704.03952>.
- Chris Paxton, Vasumathi Raman, Gregory D Hager, and Marin Kobilarov. Combining Neural Networks and Tree Search for Task and Motion Planning in Challenging Environments. 2017.
- Mark Pfeiffer, Ulrich Schwesinger, Hannes Sommer, Enric Galceran, and Roland Siegwart. Predicting actions to act predictably: Cooperative partial motion planning with maximum entropy models. In *IEEE International Conference on Intelligent Robots and Systems*, volume 2016-Novem, 2016. ISBN 9781509037629. doi: 10.1109/IROS.2016.7759329.
- Mark Pfeiffer, Giuseppe Paolo, Hannes Sommer, Juan Nieto, Roland Siegwart, and Cesar Cadena. A Data-driven Model for Interaction-aware Pedestrian Motion Prediction in Object Cluttered Environments. 2017a. URL <http://arxiv.org/abs/1709.08528>.
- Mark Pfeiffer, Michael Schaeuble, Juan Nieto, Roland Siegwart, and Cesar Cadena. From perception to decision: A data-driven approach to end-to-end motion planning for autonomous ground robots. In *Proceedings - IEEE International Conference on Robotics and Automation*, 2017b. ISBN 9781509046331. doi: 10.1109/ICRA.2017.7989182.
- Mogens Graf Plessen. Automating Vehicles by Deep Reinforcement Learning using Task Separation with Hill Climbing. pages 1–16, 2017. URL <http://arxiv.org/abs/1711.10785>.
- Dean A Pomerleau. ALVINN, an autonomous land vehicle in a neural network. 1989. URL <http://repository.cmu.edu/compsci>.
- Larry D Pyeatt and Adele E Howe. Learning to Race: Experiments with a Simulated Race Car. 1998. URL <http://www.cs.colost>.

- Charles R. Qi, Hao Su, Kaichun Mo, and Leonidas J. Guibas. PointNet: Deep Learning on Point Sets for 3D Classification and Segmentation. *Proceedings - 2016 4th International Conference on 3D Vision, 3DV 2016*, pages 601–610, 2016. doi: 10.1109/3DV.2016.68.
- Xiangjun Qian, Florent Alché, Philipp Bender, Christoph Stiller, and Arnaud De La Fortelle. Optimal trajectory planning for autonomous driving integrating logical constraints: An MIQP perspective. *IEEE Conference on Intelligent Transportation Systems, Proceedings, ITSC*, pages 205–210, 2016. doi: 10.1109/ITSC.2016.7795555.
- Eike Rehder, Maximilian Naumann, Niels Ole Salscheider, and Christoph Stiller. Cooperative Motion Planning for Non-Holonomic Agents with Value Iteration Networks. 2017a.
- Eike Rehder, Jannik Quehl, and Christoph Stiller. Driving Like a Human: Imitation Learning for Path Planning using Convolutional Neural Networks. (October), 2017b. URL <http://ppniv17.irccyn.ec-nantes.fr/session1/Rehder/paper.pdf>.
- Eike Rehder, Florian Wirth, Martin Lauer, and Christoph Stiller. Pedestrian Prediction by Planning using Deep Neural Networks. 2017c.
- Mehdi Rezagholizadeh and Md Akmal Haidar. Semi-supervised Regression with Generative Adversarial Networks for End to End Learning in Autonomous Driving. pages 1–9, 2018.
- Nicholas Rhinehart, Rowan McAllister, and Sergey Levine. Deep Imitative Models for Flexible Inference, Planning, and Control. pages 1–12, 2018. URL <http://arxiv.org/abs/1810.06544>.
- Charles Richter, John Ware, and Nicholas Roy. High-Speed Autonomous Navigation of Unknown Environments using Learned Probabilities of Collision. 2014.
- Martin Riedmiller, Mike Montemerlo, and Hendrik Dahlkamp. Learning to drive a real car in 20 minutes. *Proceedings of the Frontiers in the Convergence of Bioscience and Information Technologies, FBIT 2007*, pages 645–650, 2007. doi: 10.1109/FBIT.2007.37.
- Stéphane Ross, Geoffrey J Gordon, and J Andrew Bagnell. A Reduction of Imitation Learning and Structured Prediction to No-Regret Online Learning. 15, 2011.
- Dorsa Sadigh, Shankar Sastry, Sanjit A Seshia, and Anca D Dragan. Planning for Autonomous Cars that Leverage Effects on Human Actions. *Proceedings of Robotics: Science and Systems*, 2016. doi: 10.15607/RSS.2016.XII.029.
- Ahmad El Sallab, Mohammed Abdou, Etienne Perot, and Senthil Yogamani. End-to-End Deep Reinforcement Learning for Lane Keeping Assist. (Nips):1–9, 2016. URL <http://arxiv.org/abs/1612.04340>.
- Ahmad El Sallab, Mohammed Abdou, Etienne Perot, and Senthil Yogamani. Deep Reinforcement Learning framework for Autonomous Driving. 2017. ISSN 2470-1173. doi: 10.2352/ISSN.2470-1173.2017.19.AVM-023. URL <http://arxiv.org/abs/1704.02532> <http://dx.doi.org/10.2352/ISSN.2470-1173.2017.19.AVM-023>.
- Ari Seff and Jianxiong Xiao. Learning from Maps: Visual Common Sense for Autonomous Driving. 2, 2016. URL <http://arxiv.org/abs/1611.08583>.

- Shai Shalev-Shwartz and Amnon Shashua. On the Sample Complexity of End-to-end Training vs. Semantic Abstraction Training. pages 1–4, 2016. URL <http://arxiv.org/abs/1604.06915>.
- Shai Shalev-Shwartz, Nir Ben-Zrihem, Aviad Cohen, and Amnon Shashua. Long-term Planning by Short-term Prediction. pages 1–9, 2016a. URL <http://arxiv.org/abs/1602.01580>.
- Shai Shalev-Shwartz, Shaked Shammah, and Amnon Shashua. Safe, Multi-Agent, Reinforcement Learning for Autonomous Driving. 2016b. URL <http://arxiv.org/abs/1610.03295>.
- Shai Shalev-Shwartz, Shaked Shammah, and Amnon Shashua. On a Formal Model of Safe and Scalable Self-driving Cars. 2017.
- Tanmay Shankar, Santosha K Dwivedy, and Prithwiji Guha. Reinforcement Learning via Recurrent Convolutional Neural Networks. 2016.
- Sahand Sharifzadeh, Ioannis Chiotellis, Rudolph Triebel, and Daniel Cremers. Learning to Drive using Inverse Reinforcement Learning and Deep Q-Networks. (Nips):1–7, 2016.
- Weilong Song, Guangming Xiong, and Huiyan Chen. Intention-Aware Autonomous Driving Decision-Making in an Uncontrolled Intersection. *Mathematical Problems in Engineering*, 2016, 2016. ISSN 15635147. doi: 10.1155/2016/1025349.
- Christoph Stiller and Julius Ziegler. 3D perception and planning for self-driving and cooperative automobiles. In *International Multi-Conference on Systems, Signals and Devices, SSD 2012 - Summary Proceedings*, 2012. ISBN 9781467315906. doi: 10.1109/SSD.2012.6198130.
- Zachary N. Sunberg, Christopher J. Ho, and Mykel J. Kochenderfer. The value of inferring the internal state of traffic participants for autonomous freeway driving. *Proceedings of the American Control Conference*, pages 3004–3010, 2017. ISSN 07431619. doi: 10.23919/ACC.2017.7963408.
- Richard S Sutton, Doina Precup, and Satinder Singh. Between MDPs and semi-MDPs: A framework for temporal abstraction in reinforcement learning. *Artificial Intelligence*, 112: 181–211, 1999.
- Aviv Tamar, Yi Wu, Garrett Thomas, Sergey Levine, and Pieter Abbeel. Value Iteration Networks. 2016.
- Hossein Tehrani, Quoc Huy Do, Masumi Egawa, Kenji Muto, Keisuke Yoneda, and Seiichi Mita. General behavior and motion model for automated lane change. In *IEEE Intelligent Vehicles Symposium, Proceedings*, 2015. ISBN 9781467372664. doi: 10.1109/IVS.2015.7225839.
- Guillaume Trehard, Evangeline Pollard, Benazouz Bradai, and Fawzi Nashashibi. On line mapping and global positioning for autonomous driving in urban environment based on evidential SLAM. In *IEEE Intelligent Vehicles Symposium, Proceedings*, volume 2015-August, pages 814–819, 2015. ISBN 9781467372664. doi: 10.1109/IVS.2015.7225785.

- Simon Ulbrich and Markus Maurer. Probabilistic online POMDP decision making for lane changes in fully automated driving. In *IEEE Conference on Intelligent Transportation Systems, Proceedings, ITSC*, 2013. ISBN 9781479929146. doi: 10.1109/ITSC.2013.6728533.
- Simon Ulbrich and Markus Maurer. Situation Assessment in Tactical Lane Change Behavior Planning for Automated Vehicles. In *IEEE Conference on Intelligent Transportation Systems, Proceedings, ITSC*, 2015. ISBN 9781467365956. doi: 10.1109/ITSC.2015.163.
- Jeroen Van Den Heuvel, Marco A Wiering, and Walter A Kusters. Temporal exploration for reinforcement learning in continuous action spaces. 2013.
- Pin Wang and Ching-Yao Chan. Formulation of Deep Reinforcement Learning Architecture Toward Autonomous Driving for On-Ramp Merge. 2017. URL <http://arxiv.org/abs/1709.02066>.
- Junqing Wei, John M. Dolan, Jarrod M. Snider, and Bakhtiar B. Litkouhi. A Point-based Markov Decision Process for Robust Single-Lane Autonomous Driving Behavior under Uncertainties. *Significance*, pages 1–21, 2010. doi: 10.1109/ICRA.2011.5979587. URL [http://ieeexplore.ieee.org/xpls/abs/\\_all.jsp?arnumber=5979587](http://ieeexplore.ieee.org/xpls/abs/_all.jsp?arnumber=5979587).
- Tim A. Wheeler, Philipp Robbel, and Mykel J. Kochenderfer. A Probabilistic Framework for Microscopic Traffic Propagation. *IEEE Conference on Intelligent Transportation Systems, Proceedings, ITSC*, 2015-Octob:262–267, 2015. doi: 10.1109/ITSC.2015.52.
- Grady Williams, Nolan Wagener, Brian Goldfain, Paul Drews, James M Rehg, Byron Boots, and Evangelos A Theodorou. Information Theoretic MPC for Model-Based Reinforcement Learning. *Robotics and Automation (ICRA), 2017 IEEE International Conference on*, pages 1714–1721, 2017.
- Grady Williams, Brian Goldfain, Paul Drews, Kamil Saigol, James M Rehg, and Evangelos A Theodorou. Robust Sampling Based Model Predictive Control with Sparse Objective Information. Technical report, 2018.
- Kyle Hollins Wray, Stefan J. Witwicki, and Shlomo Zilberstein. Online decision-making for scalable autonomous systems. *IJCAI International Joint Conference on Artificial Intelligence*, (Section 4):4768–4774, 2017. ISSN 10450823.
- Markus Wulfmeier, Dominic Zeng Wang, and Ingmar Posner. Watch This: Scalable Cost-Function Learning for Path Planning in Urban Environments. 2016.
- Huazhe Xu, Yang Gao, Fisher Yu, and Trevor Darrell. End-to-end Learning of Driving Models from Large-scale Video Datasets. 2016. doi: 10.1109/CVPR.2017.376.
- April Yu, Raphael Palefsky-Smith, and Rishi Bedi. Deep Reinforcement Learning for Simulated Autonomous Vehicle Control. 2016.
- Brian D Ziebart, Andrew L Maas, Anind K Dey, and J Andrew Bagnell. Navigate like a cabbie: Probabilistic reasoning from observed context-aware behavior. *10Th International Conference on Ubiquitous Computing*, pages 322–331, 2008. doi: 10.1145/1409635.1409678. URL <http://portal.acm.org/citation.cfm?id=1409635.1409678> <http://dl.acm.org/citation.cfm?id=1409678>.

Brian D Ziebart, Nathan Ratliff, Garratt Gallagher, Christoph Mertz, Kevin Peterson, J Andrew Bagnell, Martial Hebert, Anind K Dey, and Siddhartha Srinivasa. Planning-based Prediction for Pedestrians. pages 3931–3936, 2009.

Julius Ziegler, Philipp Bender, Thao Dang, and Christoph Stiller. Trajectory planning for Bertha - A local, continuous method. In *IEEE Intelligent Vehicles Symposium, Proceedings*, 2014. ISBN 9781479936380. doi: 10.1109/IVS.2014.6856581.