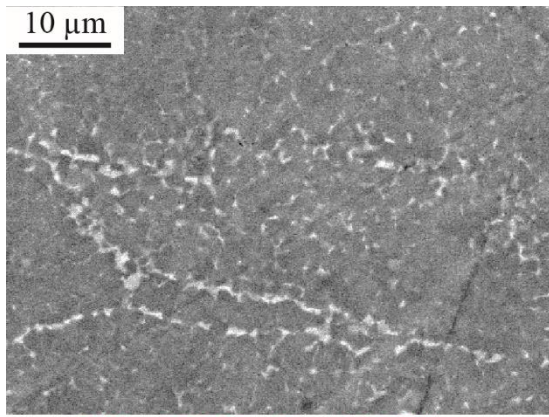
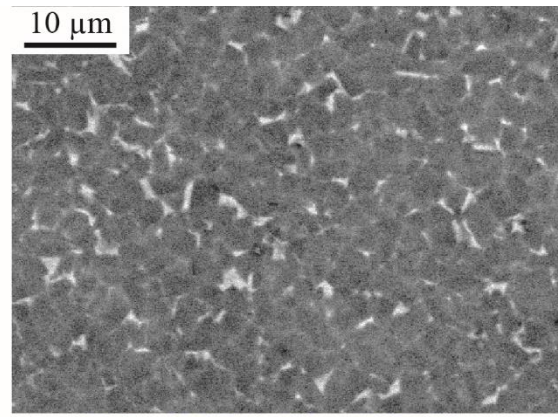


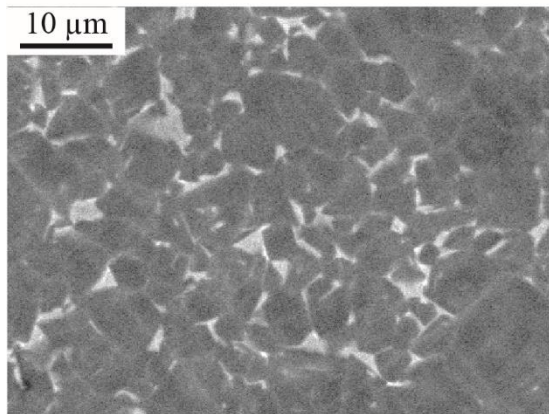
Fig. 1



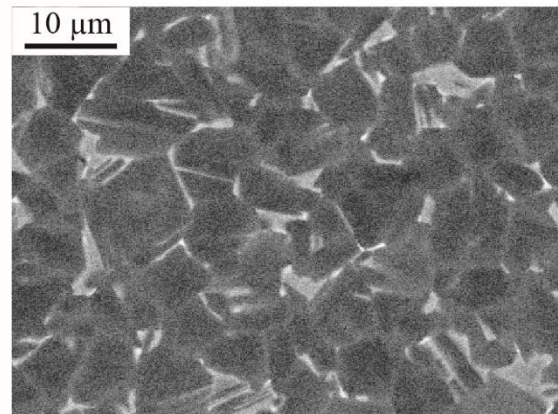
(a) - GEB - AF420 - $T_s = 1200^\circ\text{C}$



(b) - GEB - AK784 - $T_s = 1274^\circ\text{C}$



(c) - GE - AF445 - $T_s = 1217^\circ\text{C}$



(d) - GE - AL073 - $T_s = 1312^\circ\text{C}$

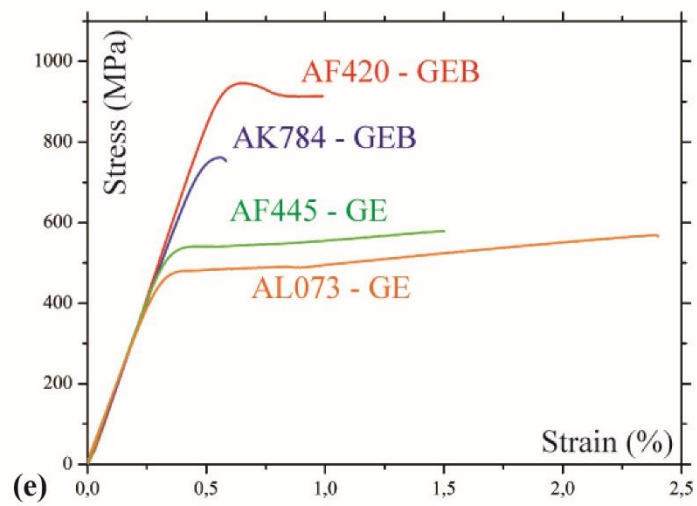
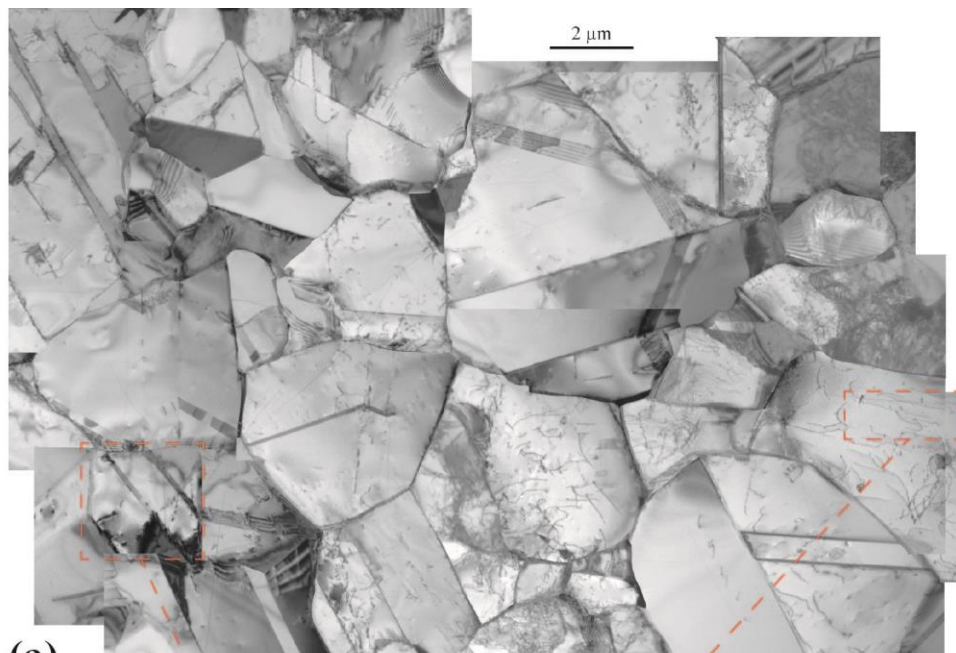
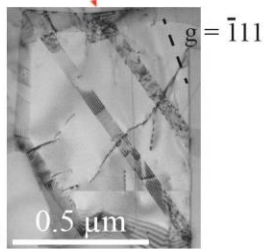


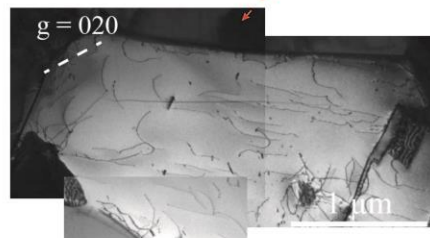
Fig. 2



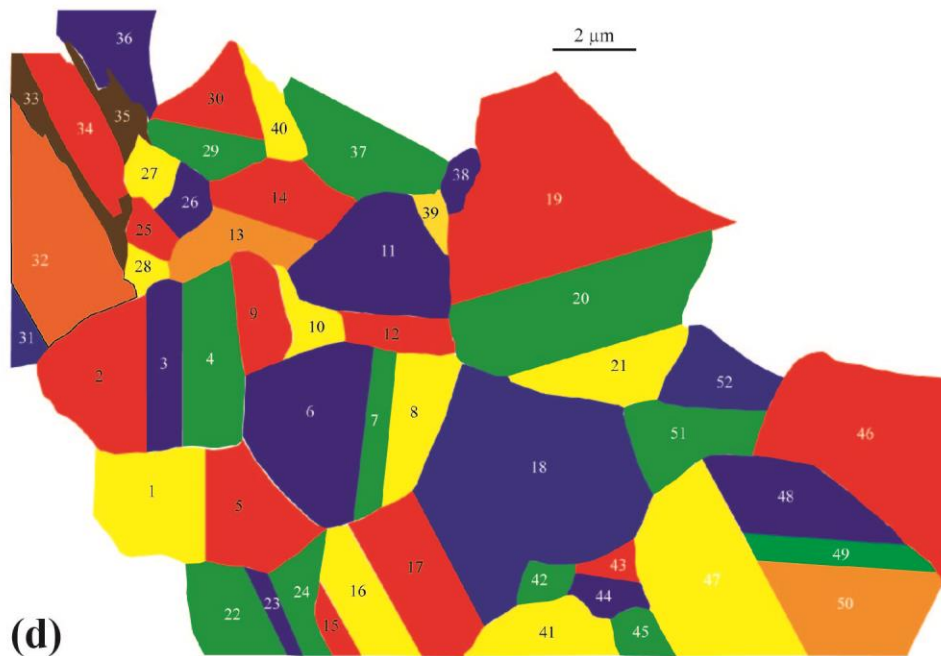
(a)



(b)



(c)



(d)

Fig. 3

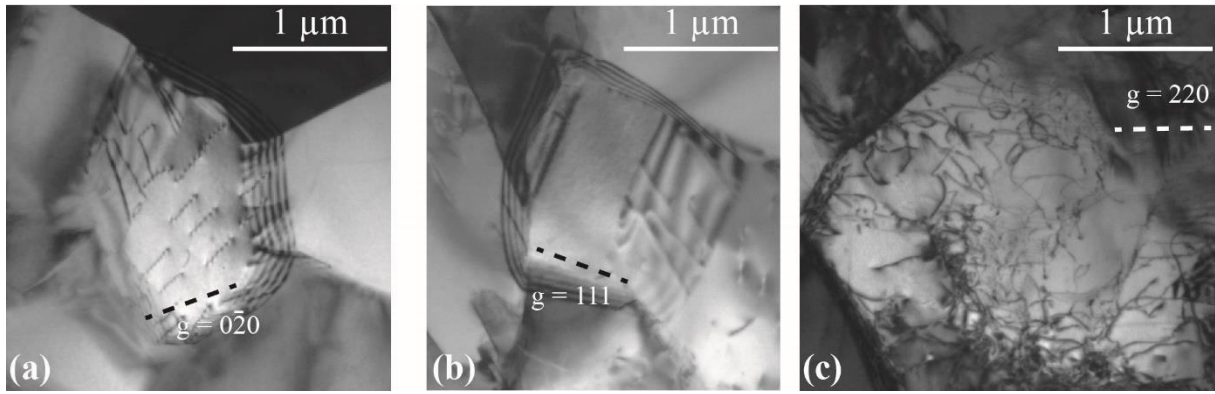


Fig. 4

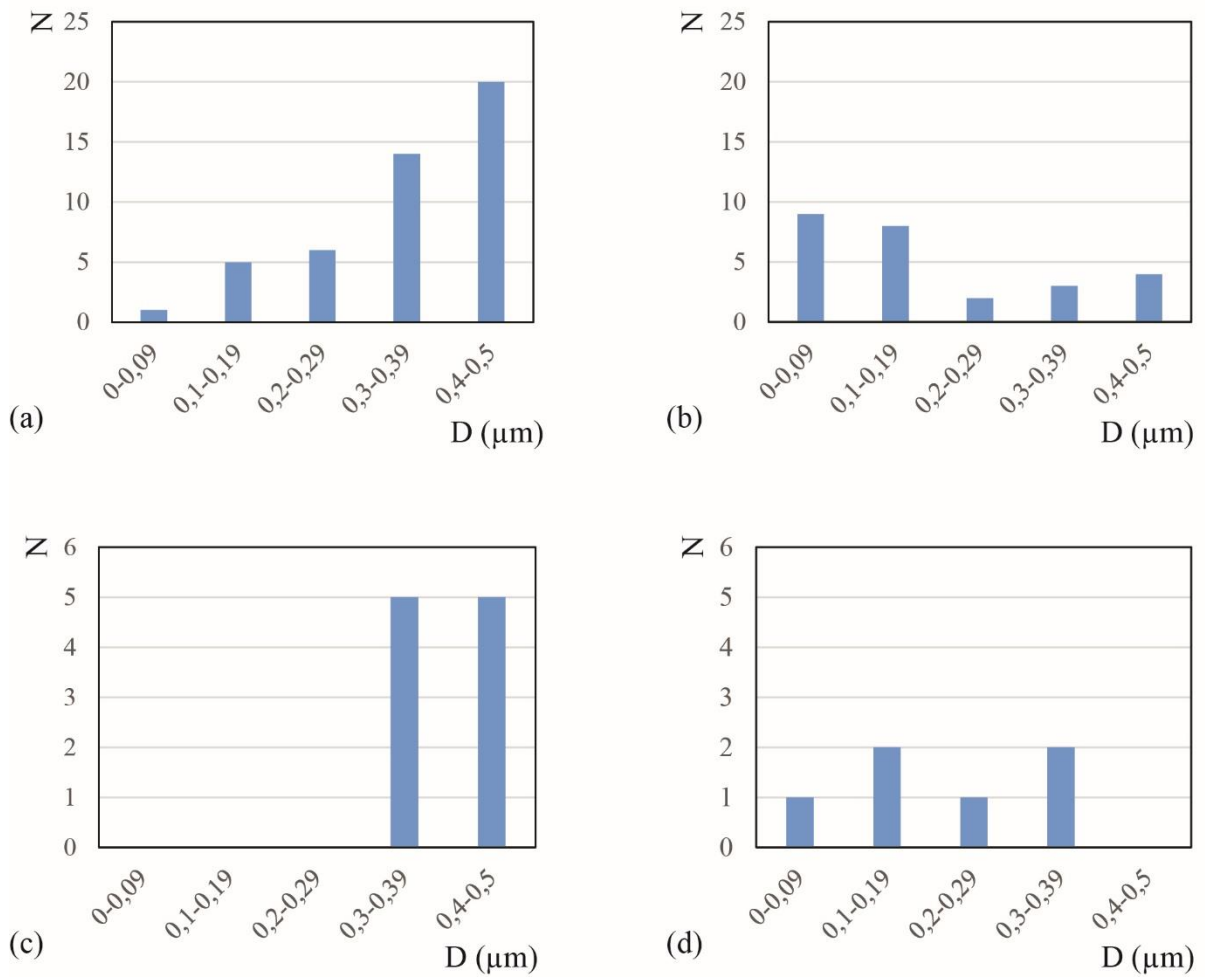


Fig. 5

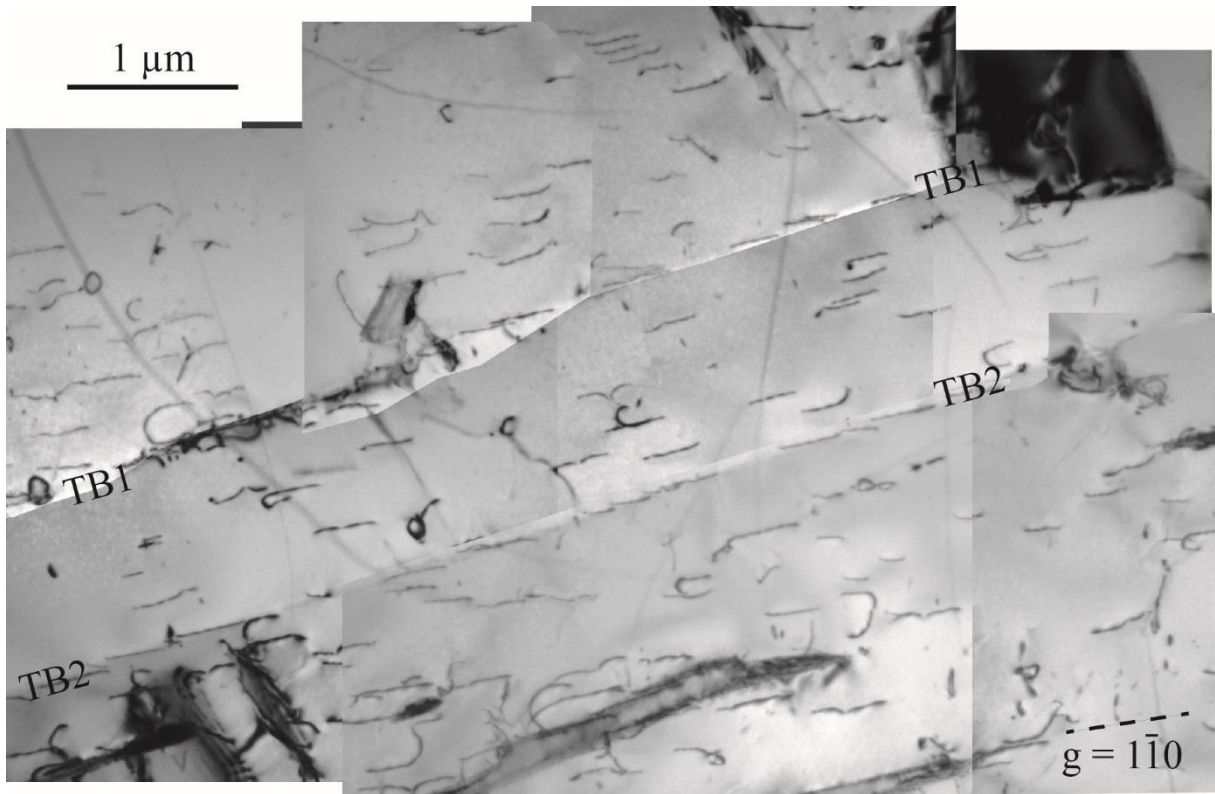


Fig. 6

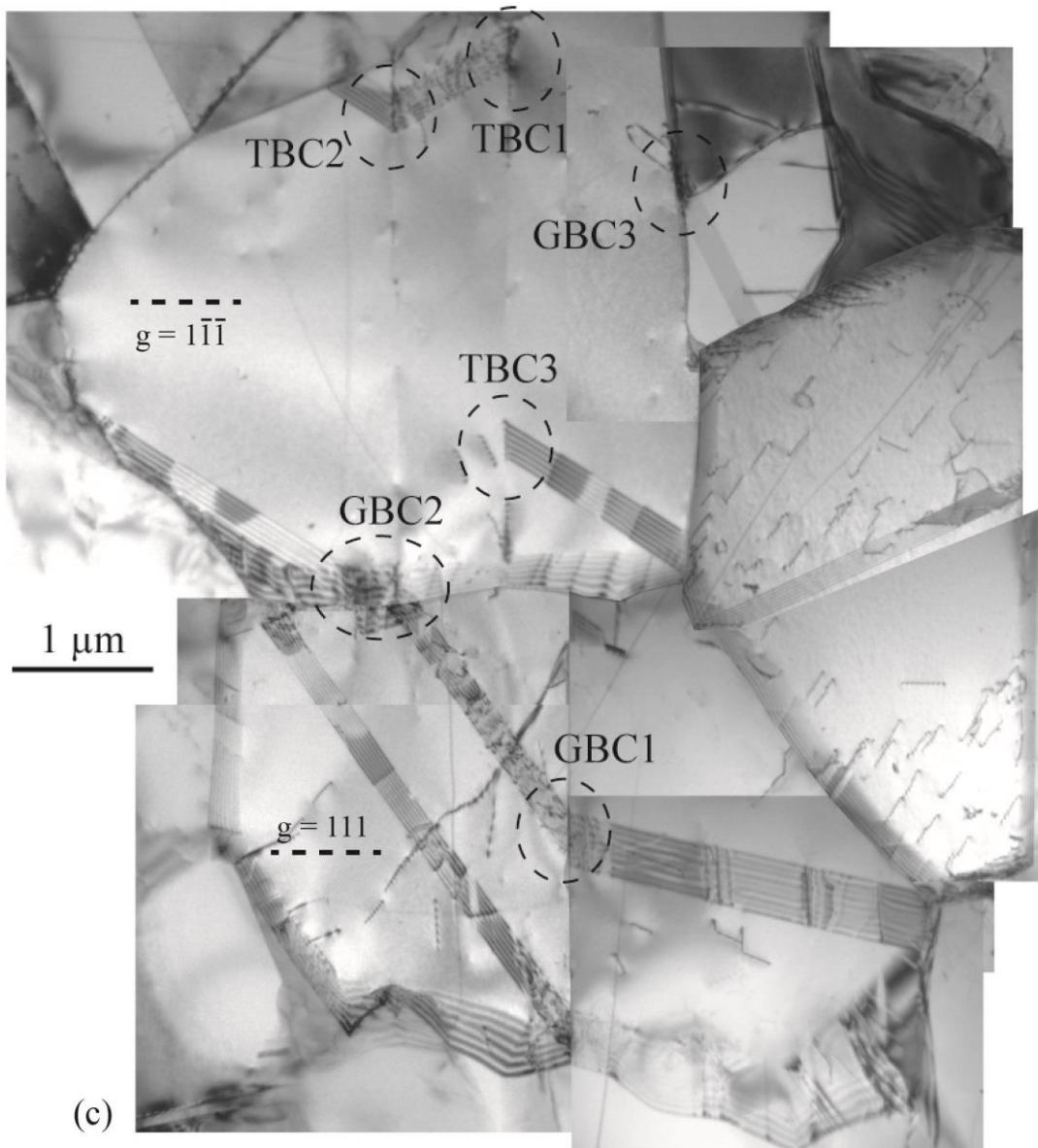
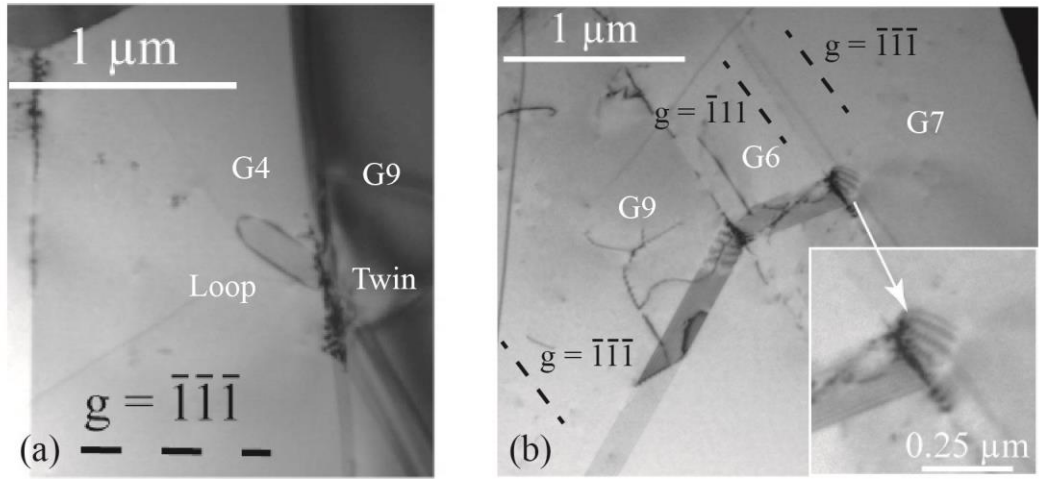


Fig.7

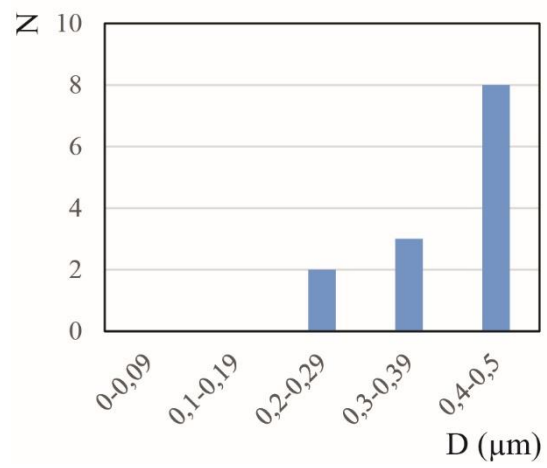


Fig.8

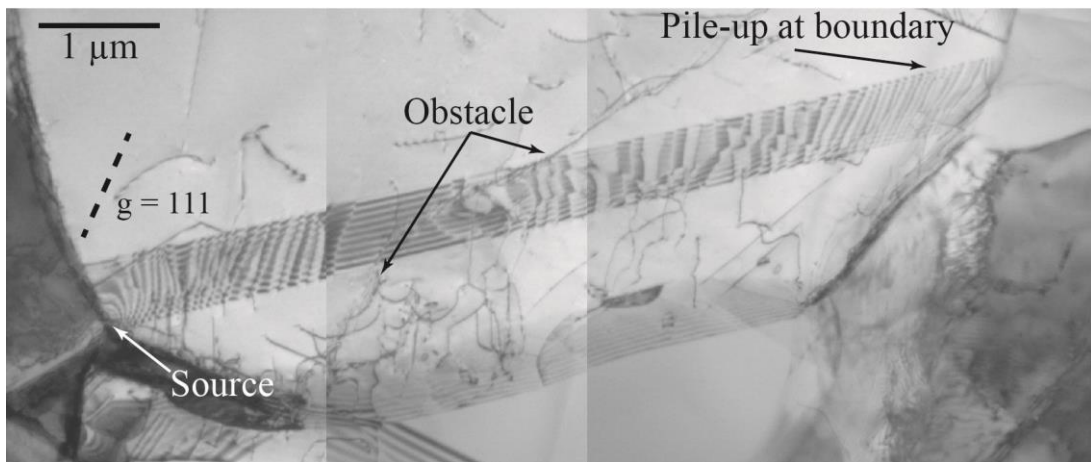


Fig. 9

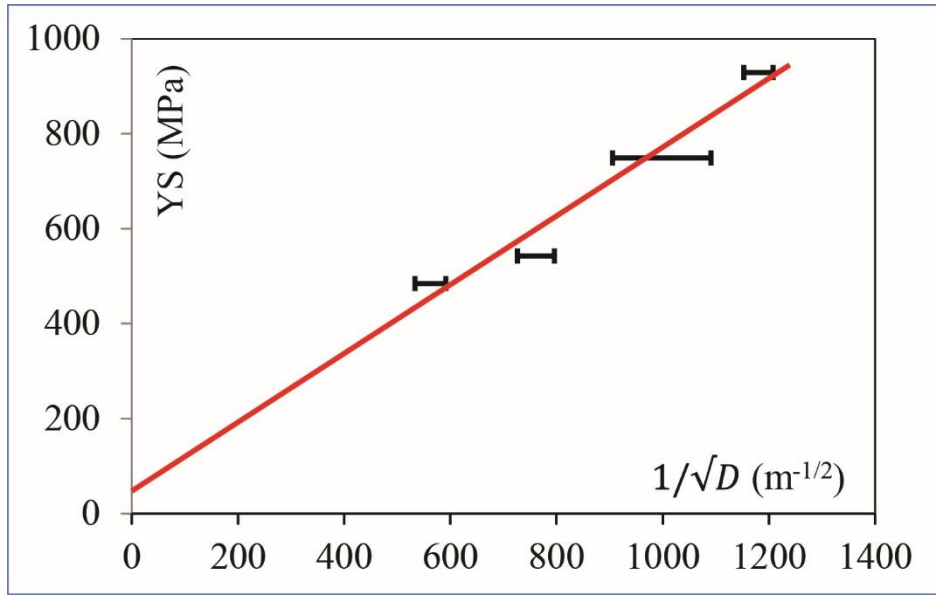


Fig. 10