



**HAL**  
open science

# Dynamics of innovative concepts in exploratory projects: managing consistency between originality, collaboration and strategy

Sophie Hooge, Milena Klasing Chen, Dominique Laousse

## ► To cite this version:

Sophie Hooge, Milena Klasing Chen, Dominique Laousse. Dynamics of innovative concepts in exploratory projects: managing consistency between originality, collaboration and strategy. R&D Management Conference 2018, "R&Designing Innovation: Transformational Challenges for Organizations and Society", Jun 2018, Milan, Italy. hal-01900545

**HAL Id: hal-01900545**

**<https://hal.science/hal-01900545>**

Submitted on 22 Oct 2018

**HAL** is a multi-disciplinary open access archive for the deposit and dissemination of scientific research documents, whether they are published or not. The documents may come from teaching and research institutions in France or abroad, or from public or private research centers.

L'archive ouverte pluridisciplinaire **HAL**, est destinée au dépôt et à la diffusion de documents scientifiques de niveau recherche, publiés ou non, émanant des établissements d'enseignement et de recherche français ou étrangers, des laboratoires publics ou privés.

# Dynamics of innovative concepts in exploratory projects: managing consistency between originality, collaboration and strategy

Sophie Hooge<sup>1</sup>, Milena Klasing Chen<sup>2</sup> and Dominique Laousse<sup>3</sup>

<sup>1</sup> MINES ParisTech, PSL Research University, 60 boulevard Saint Michel, 75006 Paris, France.

sophie.hooge@mines-paristech.fr

<sup>2</sup> SNCF and DTMI Chair MINES ParisTech, 40, avenue des terroirs de France, 75012 Paris, France.

milena.klasing-chen@sncf.fr

<sup>3</sup> SNCF and MINES ParisTech, PSL Research University, 40, avenue des terroirs de France, 75012 Paris, France.

dominique.laousse@sncf.fr

**Abstract:** Despite the importance of conceptual formulations for exploratory projects, the variety and evolution of concepts generated in an exploratory project to describe the innovative purpose across the whole innovation process is still misunderstood. In this paper, we propose to address this issue of multiplicity and coherence of concept formulation in exploratory projects at three levels — cognitive, managerial and strategic — in order to describe the dynamics of conceptual works. We rely on a longitudinal study (7 years) of the innovation capability management in a large established firm, SNCF, the French railroad company. Our main results are i) to give a typology of seven concept formulations; ii) to show that these are interdependent and part of a structured process of building a “desirable unknown” to impact three dimensions: cognitive generative power, collaborative attractiveness for new organizations experimentation, and strategic positioning renewal of the firm in quickly evolving environments; and iii) to explicit specific conceptual formulation patterns that can improve their performance. We thereby contribute to guide practitioners on building conceptual formulations to reach their innovation goals.

## 1. Introduction

In this paper, we propose to address the issue of concepts formulation dynamics in exploratory projects. Even though exploratory projects also target new product development, these activities differ from exploitation projects in the nature of their outputs on the firm performance (Levinthal and March, 1993) and the knowledge process they are managing within a firm (Floyd & Lane, 2000). Exploratory projects explore original areas for the firm, aiming to create new business units or pioneering offers through original combination of knowledge that could open new technology or market approaches, while the latter will aim to improve the knowledge of the firm in order to propose the best answer to the actual competitive environment, mostly through technologies adaptation and more relevant features to meet the needs of actual customers (Lenfle, 2016; Nonaka, 1994). Consequently, exploratory projects have long been seen as activities that generate intensive sociopolitical interactions between managers as they disturb the organization established for exploitation performance (Weick, 1995) and need to demonstrate the strategic benefits so much novelty brings to the firm (Burgelman, 1991).

Paper submitted to:

R&D Management Conference 2018 “*R&Designing Innovation: Transformational Challenges for Organizations and Society*”

June, 30<sup>th</sup> -July, 4<sup>th</sup>, 2018, Milan, Italy

Consequently, the concept formulations adopted in an exploratory project to describe its exploratory mainspring should potentially simultaneously address a cognitive goal to support the unusual knowledge process of exploration, a collaborative purpose to overcome the organizational rigidities of the exploitation structure and an explicit value proposition that explains the strategic vision. Moreover, cognition theorists have for years underlined the crucial role of concept formulation in the achievement of creative thinking (Koestler, 1964; Fauconnier and Turner, 1998) and in particular, how concepts play the role of stimuli that could sustain or decrease the ability of individual to propose original and elaborated ideas (Smith et al., 1993; Ward et al., 2004). These works led to researches on the design field about the different cognitive processes of learning that allow formulating concept or contributing to its elaboration (Hatchuel and Weil, 2003; 2009; Taura and Nagai, 2012). On the other hand, idea generation and selection process has been largely studied in new product development process to address managerial and strategic goals, and help managers to distinguish what makes effective idea for collective action and innovation performance (Björk and Magnusson, 2009; Boeddrich, 2004; Girotra et al., 2010). Nevertheless, those works are mostly concentrated on stand-alone formulation or in its evolution during ideation phase. Thus, the variety and evolution of concepts generated among an exploratory project to describe the innovative purpose across the whole innovation process is still misunderstood. Our research addresses this gap, to give insights to both practitioners and academics on the diversity and evolution of concept formulation through a systematic analysis on the three performance axis — cognitive, collaborativeness and strategic — in order to describe the dynamics of conceptual works.

This paper is a first qualitative research that investigates the practices of concepts formulation in a large established firm — SNCF, the French railroad company — that used to manage exploratory projects across a dedicated process that involved more than one thousand collaborators since 2011. We built a database of concepts used in 52 different exploratory projects from June 2011 to 2018. More than 520 different concepts have been identified, divided in 162 stand-alone formulations and 123 interrelated formulations (sets of concepts that contains at least 3 conceptual paths).

Three main results emerged from our analyses from the database and their uses in the 52 industrial projects.

First, the exhaustive census of concepts highlights the existence of seven types of formulations that address different cognitive, collaborative and strategic goals. The first three are **stand-alone concepts formulation** — workshops’ name, initial concept for exploration, creativity stimulus — that are designed to be **self-supportive and attractive ambassadors of the exploratory project purpose and ambition of disruption**, whereas the four others types are interrelated formulations — exploratory control map, detailed conceptual map, conceptual argument and pre-exploration trees — where the **contingent presentation of stepped levels of conceptual disruption structures different levels of novelty for the firm by the in order to support a more comprehensive and effective division of the exploratory work**.

Second, these different types of concept formulation do not appear randomly in the field: it forms a **structured set of concept formulations, with clear sequences** we identified across the panel of EP, that support the coordination and coherence on the different management goals across the exploratory project process. In particular, the research underlined a **step-by-step dynamics to name the “desirable unknown”** to reach in the three dimensions: **cognitive generative power, collaborative attractiveness for new organizations experimentation, and strategic positioning renewal of the firm in high velocity environments**.

Third, longitudinal analyses of concepts formulation over 8 years of practice underlined the increasing ability of exploratory projects stakeholders involved in concept formulation to elicit jointly the three dimension of the desirable unknown. In particular, we observed in this firm that innovation support team progressively stabilized some features of the different types of concept formulation.

## 2. What does an efficient concept formulation in exploratory projects mean?

Defining the quality of a conceptual formulation in an innovation process is an ambitious research issue that has been studied for a long time by researchers in creativity, new product development (NPD) and design theory. The distinction between exploratory and exploration activities is not always explicit in all of these fields of research, however, all these researches discuss individual or collective contributions to the progress of the activity. In such perspective, exploratory projects differ from traditional projects with “*clearly defined goal within a specified period of time, and in conformity with certain budget and quality requirements*” to designate major innovation projects that are led in firms to “*respond to the growing and strategic role of innovation-based competition*” and where “*goals are progressively defined during the project, new knowledge has to be developed, results are multiple, stages are overlapping, and temporality is complex*” (Lenfle, 2016). Thus, in this state of the art we will focus on how the previous works described the concept formulations as tools for these two last specific patterns of exploratory projects and support collective action in teams

Paper submitted to:

R&D Management Conference 2018 “*R&Designing Innovation: Transformational Challenges for Organizations and Society*”

June, 30<sup>th</sup> -July, 4<sup>th</sup>, 2018, Milan, Italy

searching to design major innovation (Hatchuel and Weil, 2009; Le Masson et al, 2017). We present how researchers from Creativity, NPD and Design theory tackle the issue of concept formulation to address managerial goals of originality, collaboration efficiency and strategic relevance. In a first part we develop the different results on stand-alone formulations of concept (2.1) before presenting works on the set of interrelated concepts (2.2).

### *2.1. Creativity approaches of concept formulation for cognitive performance*

In creativity theory, researches on concept formulation aims for the understanding of different managerial goals.

The most studied approach is how to give the ability to managers to compare different ideas produced by individuals during creativity sessions. Following the seminal hypotheses of brainstorming formulated by Osborn that “*quantity breeds quality*” and that assessment of ideas could be postpone after the generation of ideas (Osborn, 1953), quality of ideas is based on ex ante assessment of conceptual formulation per comparison *relatively* to a set of ideas (the other participants of the same session or a previous set). A lot of works studied efficiency criteria, mainly to discriminate novelty of ideas (fluency, flexibility, originality, elaboration) that highlights a cognitive performance of some participants (Torrance, 1965; Diehl and Stroebe, 1991; Runco and Charles, 1993), and the relevancy (feasibility, applicability, implementability, acceptability) that underlines the adequacy of the concept to the problem context (Gallupe et al, 1992; MacCrimmon and Wagner, 1994; Plucker et al., 2004).

Even Osborn’s hypotheses and team’s creativity has been largely disputed (e.g., Girotra, et al, 2010; Kazakci et al, 2014), the large amount of research works on creativity criteria and the profusion of practices based on brainstorming since the 60’s, promote largely concepts as stand-alone objects that could intrinsically bring more or less novelty and feasibility to an innovation project. Concept formulations in this approach are more or less detailed expression of an idea that could vary from some keywords on a post-it to idea cards that could integer idea name, drawings or illustrations.

Moreover, the managerial importance to take care of the content of concept formulation is, for us, further to link to a second approach of these objects in creativity theory, which focused on the cognitive steps before idea formulation. Based on cognitive studies, researchers stressed long ago the impact of concept formulation in the achievement of creative thinking. Thus, Koestler (1964) described the origin of concept formulation as the result of new junctions between former knowledge or assumptions. Fauconnier and Turner (1998) explained *blending*, a specific cognitive process where individuals modify the initial inputs of a problem and change their view of the corresponding situations, resulting in an increased capacity to formulate original concepts. Still in creativity, researchers studied how stand-alone concepts play the role of stimuli that could sustain or decrease the ability of individual to propose original and elaborated ideas (Smith et al., 1993; Ward et al., 2004). These works led to researches on the design field about the different cognitive processes to formulate a concept (Hatchuel and Weil, 2003; 2009; Taura and Nagai, 2012) and the nature of examples that sustain originality and “generativity” in creativity tasks (Agogu   et al, 2013). In those approaches, efficient concept formulations for innovation are phrases that help individuals to inhibit *mental fixation*, due to a spontaneous memory of previous ideas that impeded the generation of new and appropriate ideas (Smith, 2003). Consequently, creativity criteria of variety and fluency used to discriminate a contingent production of ideas are powerful tools to highlight fixation effects, both at individual and collective levels. If we consider all the ideas of a creative workshop as an interrelated set of conceptual formulation, a density of proposals in the same category obviously points out the shared mental fixations (Le Masson et al., 2011).

### *2.2 New product development approaches of concept formulation for collaborative and strategic fitness performance*

Creativity works had a large impact in the field of new product development. Less focused on the cognitive processes, researchers in new product development (NPD) management concentrate their research on the facilitation of idea generation and the selection processes that could support the realization of a disruptive market strategy. In this literature, ideation is largely considered as the starting point of the innovation journey (Van de Ven, 1986; Cooper, 1990) and many authors stressed the importance of ideation management to feed the funnel of new product development (Boeddrich, 2004). Consequently, these researches are motivated by the theoretical and empirical challenge to distinguish what makes effective idea for collective action and innovation performance.

In the lineage of Koestler’s work, idea quality is clearly associated to new connections between knowledge. Many studies have been conducted to compare ideation techniques performance for innovation (e.g., Cooper and Edgett, 2008) and they focused on the management of new resources for ideation (customers’ observation or collaborative workshops, open innovation with the industrial and scientific ecosystem’s stakeholder, technological watch, etc.). Thus, Bj  rk and Magnusson (2009) underlined the interrelationship between innovation idea quality and network connectivity of ideas providers (internally and outside organizational boundaries). In particular, they stressed knowledge patterns —

Paper submitted to:

R&D Management Conference 2018 “*R&Designing Innovation: Transformational Challenges for Organizations and Society*”

June, 30<sup>th</sup> -July, 4<sup>th</sup>, 2018, Milan, Italy

newness and collaborativeness — of idea formulation to be an innovation idea: “*To turn new knowledge in the form of an idea into an innovation, the idea in question also has to be made explicit so that the knowledge can be shared with other organizational members and realized through action*” (p663). Such approach is focused on the levers to fasten the further elaboration of an innovative offer.

In addition to the literature on knowledge elicitation for collaboration, Girotra et al. (2010) insists on the importance of generating ‘best’ ideas, *i.e.* with very high potential for firm’s business, and the ability to recognize them since the first steps of creativity. Building on creative theory criticisms about team inefficiency, they confirmed that groups that worked firstly independently then collectively produced best quality of ideas according creativity criteria of performance, but they were also more capable to *identify* the best. Their conclusions are for interest to our research as they conclude that this increased ability was due to a specific set-up of the creative process: as individuals engaged themselves independently in the same problem-solving issue they became more accurate to evaluate others proposals and less victims of the path by which the idea was generated. Nevertheless, coalitions of employees are numerous during innovation a process, creating dissociated sub-groups within firms (Akrich, Callon and Latour, 1988) and it has been demonstrated that in the setting of internal selection, creative teams systematically under-evaluate ideas associated to actors outside their subunit (Reitzig and Sorenson, 2013). Such an in-group bias is a micro-level symptom of the well known “not invented here” syndrome largely studied in ambidextrous organizations (Katz and Allen, 1982). Pursuing the theoretical effort of digging the steps of ideation in order to improve high-quality idea generation and facilitating its implementation, Zhu et al. (2018) recently observed in internal idea contests new kinds of interactions during the generation phase that could help to overcome such an in-group bias. They underlined specific characteristics of colleagues’ or facilitators’ feedbacks that positively affect idea quality: *diversity* resulting from a heterogeneity of commentator’s skills and competencies, *constructiveness* that provides in-depth knowledge to the idea authors on potential feasibility path or strategic fitness elaboration, and *integration* that results from facilitators’ efforts to connect the idea to other ideas. If we return the rationale, an efficient stand-alone concept formulation in exploratory project should be designed to induce constructive feedbacks from the largest diversity of internal stakeholders and stimulate managers to propose integration with others activities.

To summarize NPD approaches, a ‘good’ “stand-alone” concept formulation for an exploratory project is a high-quality idea proposal (original, elaborated, feasible, strategic fit) that guides collaborative exploration in a radical innovation NPD project by obviously pointing out knowledge to explore and eliciting a specific potential of business consistent with strategic goals. It is a crucial step of the collective process of starting an exploratory project that result of an idea generation phase and become the input of a business-oriented selection phase that could be improved by an individualization of the generation phase. The formulation must not explicitly designate internal actors or team as providers of the idea in order to reduce in-group bias of under-evaluation in selection and to provide a more heterogeneous knowledge base to later elaboration and constructive feedbacks.

Inter-relations between ideas are less studied in NPD literature but we identified two significant recent researches that bring interesting insights for our research issue. First, dealing with issue of the scarcity of resources of idea screening, Magnusson et al. (2016) highlighted that both technically-skilled users and technically-naïve users are able to rank ideas in the same order than professional experts (even there is no conformance between users and experts when comparing their absolute score) and consequently, select the same top ideas. Second, studying how to reduce shortcomings associated to web-enabled ideation systems, Beretta et al. (2018) isolate specific roles of moderators to *build* interrelations between stand-alone ideas proposals that are directly linked to the management of originality (*formalizing the ideation process*), collaboration efficiency (*combining means for community building*) and strategic relevance (*formulating an ideation strategy*).

### 2.3 Innovative design approach of concept formulation for generativity performance

Design is a common reasoning resulting in new and original proposals based on knowledge re-combination, acquisition and creation that is shared by numerous stakeholders of industrial exploratory projects whose most known representatives are engineers and industrial designers. They all shared the use of concept formulation in their reasoning to nurture their knowledge process (Hatchuel and Weil, 2009). For example, a classic concept formulation promoted by industrial designers in innovation activities is the “Design brief”. Researchers in design theory underlined that this conceptual object can’t be considered as the elicitation of a problem-solving task, but should be seen instead as “*only propositions on artefacts that are desirable but partially unknown. They are highly underdetermined both from a framing and solution seeking perspectives.*” (Hatchuel et al, 2017, p7). This illustrates the main difference for our purpose between design theory approach and the previously presented of creativity (and NPD which is largely rooted in ideation): the ability to identify the “generativeness” of such a conceptual formulation.

Paper submitted to:

R&D Management Conference 2018 “*R&Designing Innovation: Transformational Challenges for Organizations and Society*”

June, 30<sup>th</sup> -July, 4<sup>th</sup>, 2018, Milan, Italy

This notion of generativity, i.e. “*the ability to produce design proposals that are different from existing solutions and design standards*”, is at the heart of the different successive or co-existing theories of design (Hatchuel et al., 2011). To explain it briefly, throughout an innovative design process, actors manipulate different generative conceptual formulation that engineering design theorists named as ‘set of functional requirement /design parameters’, ‘function-attribute couple’, ‘infused function-attribute model’, ‘concepts-knowledge expansion’, etc. (Suh, 1990; Braha and Reich, 2003; Shai and Reich, 2004; Hatchuel and Weil, 2009). Generativity designates the power of a conceptual formulation to support and guide the creation of *new* knowledge during exploration, whereas creativity is focused on ideation within existing bodies of knowledge (Le Masson et al., 2011). Thus, in C-K theory, a concept is the unknown object to design, described through a list of desirable properties extracted from knowledge bases of the designers, whereas concept-knowledge expansions are successive interactions between concept space and knowledge bases that induce the *creation* of new knowledge and new conceptual paths to address the problem at the origin of the will to innovation (also called dual expansion mechanism, Hatchuel and Weil, 2003; 2009).

Then, in exploratory project, an efficient concept formulation is generative: it induced surprising way to address the problem (original design paths) and the generation of new knowledge. Interrelations between concepts formulation are very studied in design science. The relationship between conceptual formulations is even at the heart of the works that deals with the design process of major innovations as Infused Design or C-K Theory. As the aim is to create really new design paths, they can’t appear without a deep modeling of existing paths and their novelty can’t be assessed without a reference to the dominant design (i.e. main products and business model) (Gillier et al.2015).

### **3. Method: Analyzing a longitudinal production of concept formulations in exploratory projects**

The paper is a first qualitative research of the issue that investigates the practices of concept formulation in a large established firm — SNCF, the French railroad company — that used to manage exploratory projects across a dedicated process of structured innovative design workshops which involved more than one thousand collaborators since 2011. The research takes place in a long-term collaborative partnership between researcher and practitioners (Adler et al., 2004; Shani et al., 2008) to support and improve these structured innovative design workshops (based on KCP workshop method, Elmquist and Segrestin, 2009; Le Masson et al, 2009) as cognitive and collaborative tools for innovation (Hooge et al.,2016).

To manage its exploratory projects with design theory inspired methods since 2011, the firm created an innovation and foresight team inside the research and innovation department. One of this team’s goals was to develop methods that would allow breakthrough innovations to emerge, and to lead applications of these methods under deep cooperation with the different departments inside the firm. We will refer to the small teams created in cooperation as “exploratory project managers”, these always include at least one person from the innovation team and one to five people from the departments. The innovation team organized over 80 structured innovative design workshops over the 2011-2018 period to achieve this goal that contribute to 52 different exploratory projects. The workshops involved large groups of collaborators (up to 100 collaborators) that still followed the same main steps of collaboration to collectively investigate the issues raised by the exploratory project managers: a first phase of intensive knowledge sharing and acquisition, a second phase of creativity and conceptual exploration and a third phase to structure the proposal for business elaboration, specific research programs and validation strategy.

Two authors of this paper are part of this innovation cell since respectively 2011 and 2015; one created the above discussed team in 2011. Thus, our case study is particularly interesting due to the fact that we were able to collect a very large amount of internal data on 7 years of innovative design workshops. Due to the fact that the innovative design workshops were structured, concept formulations with different cognitive and managerial goals were formalized, and collecting this data over time allows us not only to better understand the emergence and evolution of each concept, but also their interactions. We will describe these in the next paragraphs and also give some examples.

For the paper, authors built a database of concepts used in 52 exploratory projects from June 2011 to 2018. More than 520 different concepts have been identified divided in 162 stand-alone formulations and 123 interrelated formulations (sets of concepts that contains at least 3 conceptual paths).

Table 1 shows the data collected divided into stand-alone concepts and structured sets of concepts. The different concept formulations will be discussed in our case study.

Autonomous concepts (Stand-alone formulation)			Structured sets of concepts (interrelated formulation)			
Workshop name	Initial concept for exploration	Creativity stimulus	Exploratory control map	Pre-exploration tree	Detailed concept map	Conceptual argument tree
52	43	67	52	11	40	20

Table 1. Conceptual formulation data collected

Data was collected from different internal sources, from field notes of participants of the workshop, from official communications on each one of the workshops, as well as through non-structured interviews with participants of the innovation workshops.

## 4. Case study: The experience of SNCF on concept formulations

### 4.1 Concept emergence and evolution

In the sample of 8 years we studied, we identified seven different kinds of concept formulations that were employed to foster creative thinking and exploratory project management. These concepts emerged at different points of the exploratory projects, structured through the collaborative innovative design workshops. The concept formulations also had different formats. We will start by describing their emergence and evolution, by separating between stand-alone concepts and structured sets of interrelated concepts.

#### 4.1.1 Stand-alone concepts

There are a series of concepts used inside the firm for innovation that can be used and understood by themselves. This does not mean that these concepts are independent from the others. As we will describe further down, they are still part of a global reflexion in the innovation field the exploratory project is addressing. However, they can be employed alone, without the need to mobilize other concepts for them to be understandable. There are three types of stand-alone concepts we identified in SNCF longitudinal experience: workshops’ name, initial concept for exploration, creativity stimulus (also named “disruptive searchlight” by Elmquist and Segrestin (2009), “C-Projectors” in (Hatchuel et al. , 2009), “conceptual exploratory axis” in (Hooge et al., 2016).

The *workshop name* is the first stand-alone concept defined for each workshop. It is created every time there is a subject identified as being relevant for exploration: its source is consequently sometimes hard to define as it often crystalize before the official launch of the exploratory project. Its emergence allows starting exploration and creating a project team, considered legitimate inside the firm. The workshop name makes it easier to communicate inside the firm, invite participants for the workshops and do preliminary explorations on a subject. Workshop names are not completely static, but since they identify a workshop and its associated team, they usually do not evolve once the first invitations for a workshop have been launched. If evolutions happen, they are managed by adapting or adding a sub-title to the initial workshops’ name. The exploratory project managers could make such modifications to better match with participants’ mindsets, to open on unexpected conceptual dimension or to detail some aspects of original concept.

The *initial concept* for exploration is defined by the exploratory project managers once they have done preliminary exploration both inside and outside the firm and are able to better identify the perimeter they want to work on. The initial concept is formulated to highlight an unknown to explore that is ‘desirable’ for the many stakeholders that could impact or be impacted by the achievement of the project (in the sense of Freeman, 1983): it has value for the firm, is fitting with the strategy and is not a question that can easily be answered. It demands to go beyond the dominant design, and despite consistency with strategy can demand to redefine certain of its aspects. The formulation of the initial concept is done by exploratory project managers before collective workshops start, but in three of the workshops in our database it was the outcome of the collective workshop, and one of the identified workshops never defined one. For those cases, the exploratory project is still on-going or had been postponed to gather a more adapted team of “exploratory project managers”. In all the other projects, the initial concept was communicated to all workshop participants in the first workshop session. It is the backbone around which the exploration will be structured, and the starting point for all the structured sets of concepts done linked to a workshop. It’s a living object for the group : the initial concept for exploration is often reformulated, even during the workshop, but its initial formulation is often recalled by participants or project manager to discuss the new paths a reformulation opens.

*Creativity stimuli* are used to guide exploration during collective workshops. They are built by the exploratory project managers and based on their first structuration of the innovation field to explore (‘exploratory control map’, presented in 4.1.2). The goal of creativity stimuli is to make sure explorations by the workshop group go in a valuable direction, both in term of disruption and strategic fitness. Depending on the size of the group involved in the workshop, there can be from two to six different creativity stimuli proposed, and they are worked on in smaller groups, of around 10 to 15 participants.. Each creativity stimulus has a verbal formulation as title, but since it is used to stimulate the group to innovate, it contains a subtitle and a series of images and words, creating expansive examples and tensions that stimulate discussions inside the group. One example of creativity stimulus (without the images for copyright reasons) can be found in Figure 1 .

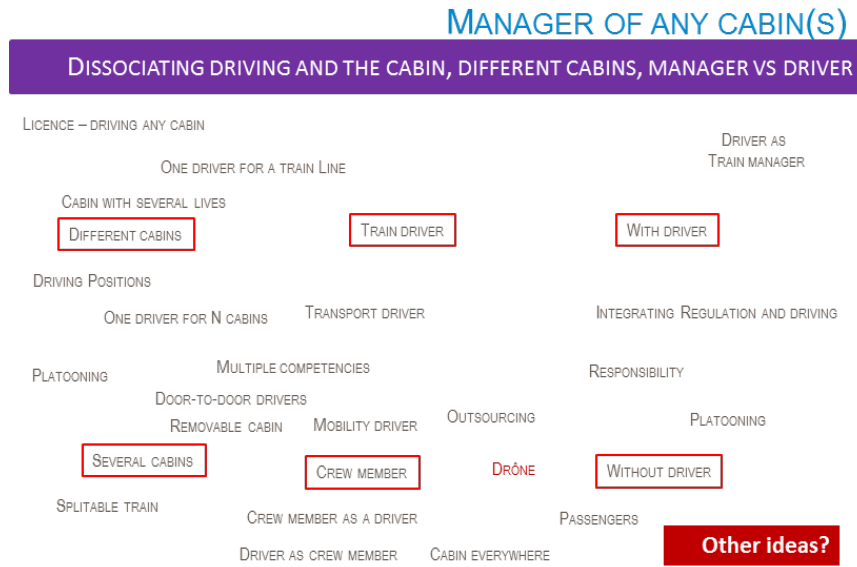


Figure 1. Example of a creativity stimulus without the images for the “cabin futures” workshop. Images were removed for copyright reasons

As we highlighted in the presentation of the different stand-alone concept formulations, the moments in which concept formulations are employed are different, and they are interlinked. Concept formulations furthermore differ in their form. To better understand the diversity inside the database we collected we will give some examples of the concept formulations used in eight exploratory projects in table 2.



Year	Workshops' name	Initial concept for exploration	Creativity stimulus title
2012/2013	Mass Transit	SNCF Transilien Railway operator of the current and future network, multimodal and high capacity, for a resilient traveller service	<ol style="list-style-type: none"> <li>1. Transilien = Hardened operator</li> <li>2. Mass transit comfortable in degraded operations</li> <li>3. Chameleon transilien</li> <li>4. From the station to the interface</li> <li>5. Mass transit as a universal platform</li> <li>6. Positive Mass Transit</li> </ol>
2013/2014	Rolling Stock High Performances Mainten@nce	Enlarging vision of rolling stock maintenance to regenerate it and to reduce cost by 30%	<ol style="list-style-type: none"> <li>1. Flexible, quick and robust maintenance</li> <li>2. Just maintenance</li> <li>3. Operations-maintenance symbiosis</li> <li>4. Open maintenance</li> <li>5. 0 maintenance, the maintenance that disappears</li> <li>6. Positive impact maintenance</li> </ol>
2016	Immo Futures	Immo Futures - The future of real estate by the same actors doing different projects	<ol style="list-style-type: none"> <li>1. Urb@n Dynamic Lifestyles</li> <li>2. Bionic Real estate</li> <li>3. Future net value</li> </ol>
2016	Voyage Analytics	New ways for transport optimization	<ol style="list-style-type: none"> <li>1. Stealthy production</li> <li>2. Collaborative and collective services</li> </ol>
2016	Mobilities & societ@l tempos	Regenerating vision of mobility and transport organization to face mutations of everyday life with local end-users and authorities	<ol style="list-style-type: none"> <li>1. Augmented Mobility Traveller</li> <li>2. Societ@l station: triple Hub</li> <li>3. Flexible mobilities</li> </ol>
2016	Adaptive st@tion	The station viewed as a flexible bubble of mobility for users	<ol style="list-style-type: none"> <li>1. Emancipated traveller</li> <li>2. High/Low tech Station</li> <li>3. St@tion for diversity</li> </ol>
2017/2018	Cabin Futures	Hypercockpit for hyper operations as a conceptual exploration to design innovative pre-competitive R&D roadmap for major European industrial and operational actors	<ol style="list-style-type: none"> <li>1. Manager of any cabin(s)</li> <li>2. Polymorphism applied to driving locus/place/cabin of operations</li> <li>3. Personalized cabin through on-demand standards</li> <li>4. Hypercockpit for Innovative low cost train operations</li> </ol>
2018	Convers@tions	Building a transversal community on conversational agents based on collective exploration projects	<ol style="list-style-type: none"> <li>1. Chatbots as socio-technical objects</li> <li>2. From the collective and individual to chatbots</li> </ol>

Table 2. Stand-alone concept formulations gathered for eight workshops

#### 4.1.2 Structured set of interrelated concepts

Besides the stand-alone concepts, we also identified structured sets of concepts, where at least three different conceptual paths are linked, and the concept set has to be seen as a whole. There were four identified types of concept sets: exploratory control map, pre-exploration trees, detailed conceptual map and conceptual argument.

The *exploratory control map* is a tool manipulated only by the exploratory project managers. It helps them structuring the different workshop phases: before workshop's collective phases, it allows the managers to identify where fixation effects could occur and where new knowledge could help the group in the exploration. The project team often makes several different exploratory control maps, since these evolve with the workshop preparation and during workshop. Although an exploratory control map is done for every workshop, these are rarely formalized in reports or presented to others internal stakeholders of exploratory project, since they are preparation and coordination tools for the managers and are therefore mostly done on paperboards or are in the field notes from the workshop preparation meetings. Concretely, the exploratory control map is a conceptual tree that starts from the initial concept for exploration, that tries

to map the new conceptual paths linked to this initial concept, thinkable from knowledge available in the firm or mobilizing new knowledge to extend exploration. Creativity stimulus result from these properties of the exploratory control maps.

*Pre-exploration trees* are a second type of structured set of interrelated concepts. Like creativity stimulus, they are a way to guide explorations during the workshops. Pre-exploration trees are generally considered more effective by the workshop organizers when the group has some experience reading and using exploration trees. They are composed of a series of concepts linked to the initial concept for exploration, and participants of the workshop are encouraged to continue expanding the tree. One example can be found below, in Figure 2.

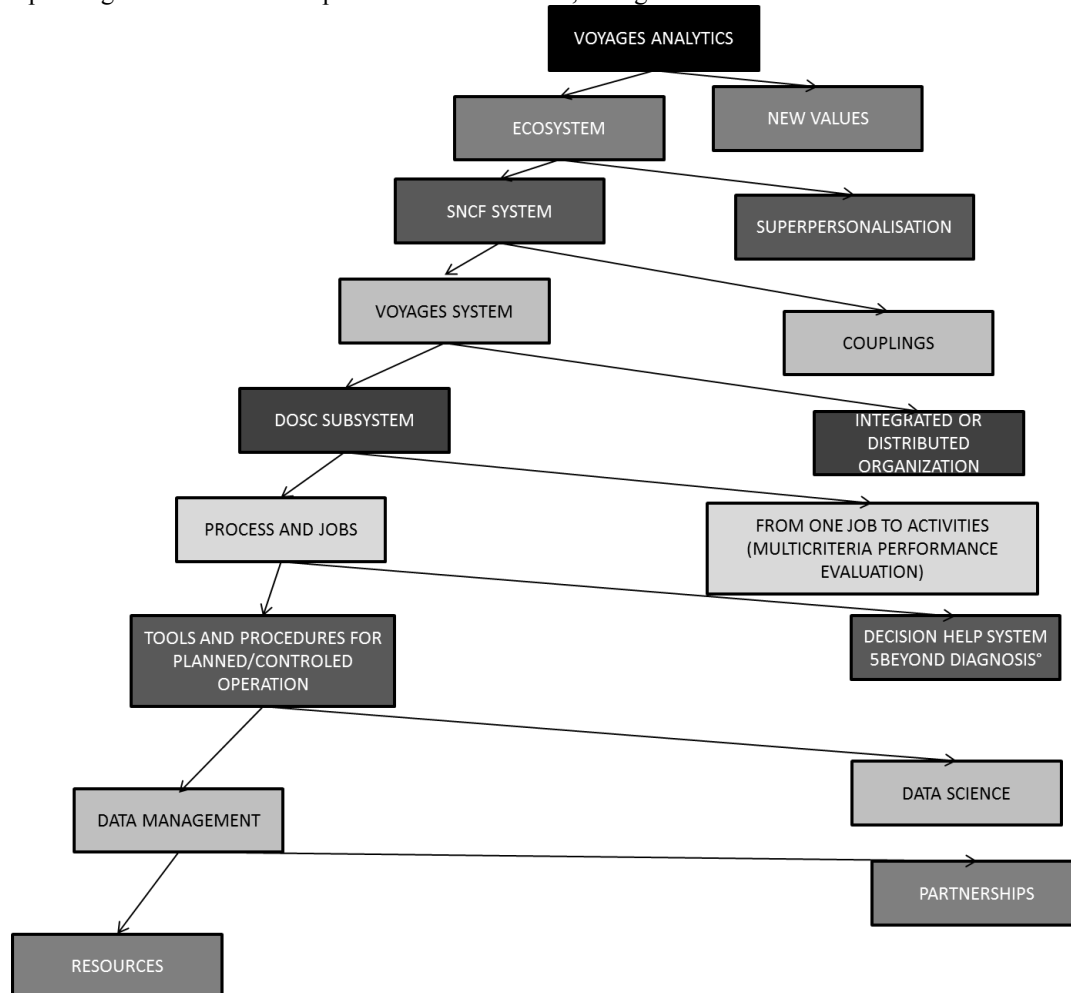


Figure 2. Pre-exploration tree used for the “voyage analytics” workshop. Translated by the authors.

The *detailed conceptual maps* describe the entire exploration done during the workshop on the given innovation field to explore identified in the project. They also start from the initial concept for exploration, and by adding attributes allow expanding it to a series of new concepts. Since they give a complete overview of the exploration done in an innovation field, the detailed conceptual maps are used to build the roadmap inside an innovation field. Innovation field project managers also use them to build their strategy and sometimes to build an argument to justify specific learning project launches. Due to their close link to the innovation strategy and to confidentiality issues, we will not present any detailed conceptual maps in this paper.

The *conceptual argument tree* is a synthesis of the detailed conceptual map, which highlights the main paths opened during the exploration that has been done. It is formulated based on the detailed conceptual map and allows participants to explain the exploratory project to outsiders. It is also used to present the exploration to stakeholders inside the firm. By giving a simple visual overview, it helps justifying why an exploratory project was interesting. One example of conceptual argument tree can be found in Figure 3.

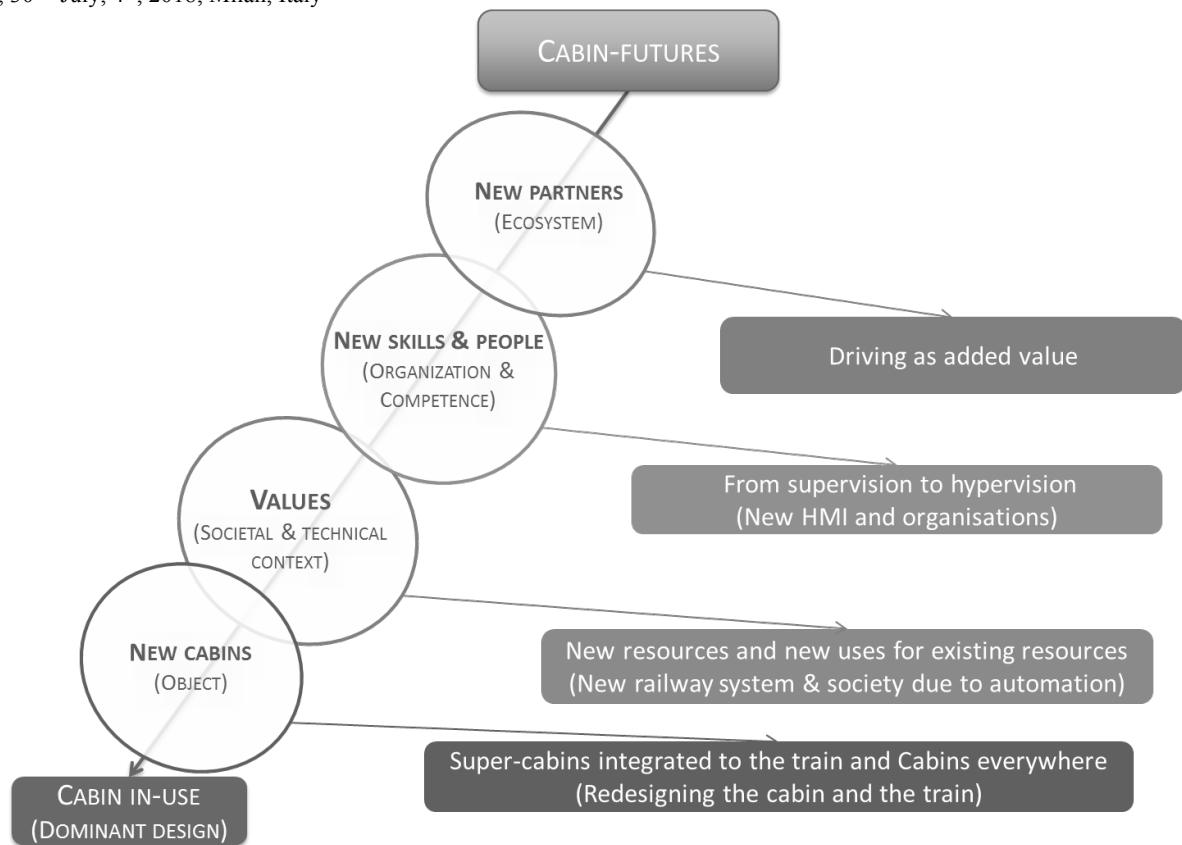


Figure 3. A conceptual argument tree example from the cabin futures workshop

#### 4.2 Concept formulations inside an innovative design process: their interactions

As can be seen in the emergence of the different concepts, there is an interaction between the different concept formulations. These links can be seen in Figure 4. In general, the first conceptual formulation defined for every workshop is the workshop’s name. After the workshop name has been defined and exploratory project managers for the workshop have been defined, first explorations will lead to defining the initial concept for exploration. Starting from the initial concept for exploration, the exploratory project managers draft an exploratory control map. As cited before, the exploratory project managers from the departments are accompanied by managers from the internal design methods team to insure method coherence.

Exploratory control maps are tools that help the project managers guide the exploration. They are used to identify where there might be value in an exploration and where the exploration has higher interest for the firm. It is based on this map, which is in continuous evolution, that the creativity stimulus or pre-exploration trees are built. These are then used in the workshop to help participants to make propositions. Based on the participant’s propositions and on the exploratory control map, a detailed concept map is built. The main exploration directions from the detailed concept map are then summarized into the conceptual argument.

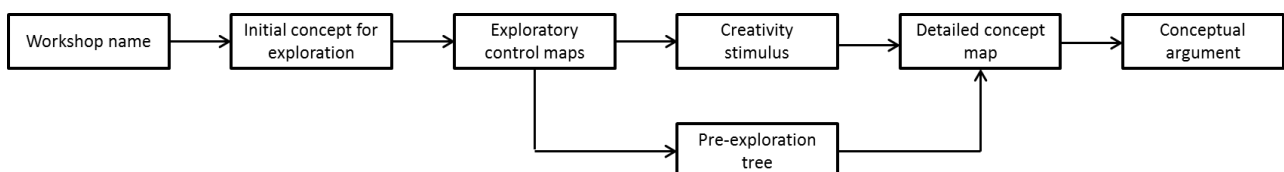


Figure 4. The links between different conceptual formulations during a structured innovative design workshop

Even though this is not modelled in Figure 4, there can be a retro-action from concepts proposed later on the first concepts. As has been said before, all concepts are not static; many of them will evolve in time. For example, after

doing a detailed concept map, in some cases, it became evident that the initial concept for exploration only encompassed one of the paths explored by the map. In this case, a new initial concept for exploration was formulated. In yet other cases, after drafting a detailed concept map, the project team realized there were interesting paths to be explored that had not been discussed. This led to two different approaches: proposing new creativity stimulus and working on them; or formulating an initial concept for exploration for another workshop.

## 5. Results and discussion

The 52 exploratory projects we analysed in our database show a great diversity of concept formulations usage. Not all of the workshops will mobilize all types of concept formulations. This can be justified by the diversity of exploration situations and goals. We will now discuss the different goals and impacts of concept formulations in the next session.

### 5.1 A typology of stand-alone and interrelated concept formulations

As previously mentioned, stand-alone concepts and set of interrelated concepts are all contributing to the exploratory project progress thus they are definitely not independent. Nevertheless, they are not eliciting in the same way the cognitive, collaborative and strategic goals of an exploratory project. In table 3, we describe how each of them specifically addresses these different challenges of the management of such disruptive activity. To be coherent with the literature state of the art, we distinguish the two dimensions of cognitive involvement generated by the introduction of original properties in concepts formulation: overcoming fixation effects and inducing new knowledge recombination or acquisition.

	<b>Cognitive:</b> Originality for Creativity (de-fixation)	<b>Cognitive:</b> Originality that induce knowledge process	<b>Managerial:</b> Collaboration and team building	<b>Strategy</b>
<b>Workshops' name</b>	Name conceptual frontier to be reached – first occurrence of the area to explore	Indicate the exploratory nature of the activity	Allows participants to candidate to the collaborative workshops	Proposes a shift in company strategy under agreement of top managers
<b>Initial concept for exploration</b>	Detail of the desirable unknown dimension with explicit properties of cognitive, collaborative and strategic challenges to explore	Points to missing knowledge	Basis to choose participants on every dimensions of the desirable unknown; Stimulus for workshop participants	Specify the exploration axes opening new strategic potential outside of the dominant design
<b>Exploratory control map</b>	Formalize new potential conceptual paths (compared to dominant design path)	Identify the knowledge recombination and acquisition strategy to reach the new conceptual paths	Identify major fixations shared within the firm that could block the exploration of the new conceptual paths	Allows to identify strategic fitness of the new conceptual paths to explore
<b>Creativity stimulus</b>	Guide new explorations through a set of various approaches of the desirable unknown (based on original Co evolution after the phase of knowledge sharing and acquisition)	Support collective identification of ideas and tracks of action to acquire new knowledge Identification and collective recognition of fixation effects	Creates a design community focused on deepening futures tracks of action	Naming of creative stimuli details the strategic fitness of a new conceptual approach of the issues explored in the project
<b>Pre-exploration tree</b>	Formalize already done explorations and work to do to explore	Elicit links to learning done, on-the-go and new	Federation of participants around first conceptual	First identification of new knowledge needs facing original conceptual paths

		knowledge to acquire	production	
<b>Detailed concept map</b>	Shows all the conceptual logic formulated during the whole workshop (final exploratory concept map)	Maps the missing and available knowledge to reach the whole set of conceptual paths explored by the group	Positioning the overall exploration work beyond future projects	Allows to prepare future strategy of proposals with executive sponsor of the exploratory project and to relate work done to existing innovation field strategy Propose new innovation field beyond the exploratory project
<b>Conceptual argument tree</b>	Reduced detailed concept map to the core conceptual argument sharable by all internal stakeholders of the exploratory project	Identifying the core learning for participants	Allows the participants to communicate with their colleagues and managers, and the project managers to commit potential project leaders for next validation steps	Clarifying strategic intent with top-managers and the exploratory project executive sponsor.

Table 3. Goal of the seven types of concept formulations

In particular, stand-alone concepts formulation — workshops’ name, initial concept for exploration, creativity stimulus — are designed to be self-supportive in order they could easily diffuse in the organization among the various internal stakeholders of exploratory projects. Thus, they play an important role to federate the community of active members of the project (project managers, participants to the collective innovative design workshops, executive sponsor). Proposing short and attractive naming of the exploratory project purpose and ambition of disruption, they are foundational elements of the identity of the epistemic community raised by the exploration (Cowan, David and Foray, 2000; Cohendet and Llerena, 2003). Beyond active members, they play an important role for the socialization of the exploration project.

Formulations of interrelated concepts — exploratory control map, detailed conceptual map, conceptual argument and pre-exploration trees — are more complex tools: they allow understanding the level of disruption addressed by the different conceptual paths by the elicitation of their co-existence. Indeed, contingent presentation of stepped levels of conceptual disruption structures different levels of novelty for the firm in order to support a more comprehensive and effective division of the exploratory work required to address the journey from the dominant design the firm used to manage to new innovative design paths.

## 5.2 A process to elicit the “desirable unknown” of an exploratory project

Elicitation of a “desirable unknown” is, in itself, a cognitive and a social process. As a cognitive process, elicitation means understanding future participant’s socio-technical imaginary, to identify possible conceptual frontiers as inputs for the definition of “unknown”. As a social process, elicitation means fine tuning the workshop’s name and the initial concept formulation to be sure that it will be “desirable” by participants. To make this possible, an exploratory project needs both managers who are experts from the innovation team and socio-technical experts, to make sure that “desirable unknown” is both challenging (a conceptual frontier) and contingent (fine tuning).

As cited before, there are different goals across the exploratory project process, on cognitive, managerial and strategic levels. Our research shows that the cognitive aspect of the “desirable unknown” interesting in an exploratory project is both that it allows defixation and that it allows identifying missing knowledge: it allows a greater *cognitive generative power*. From a management perspective, the “desirable unknown” should allow new collaborations and new partnerships, through *collaborative attractiveness for new organizations experimentation*. Finally, we identify that from a strategic point of view, the “desirable unknown” should not be in line with the company’s strategy, but rather render the current strategy more robust to changes, add new activities or make the firm’s strategy evolve, it should allow the *strategic positioning renewal of the firm in quickly changing environments*.

The different types of concept formulation we observed appear in a clear sequenced way and form a structured set of concept formulations. We will discuss the step-by-step dynamics to reach in the three above cited dimensions: cognitive generative power, collaborative attractiveness for new organizations experimentation, and strategic positioning renewal

Paper submitted to:

R&D Management Conference 2018 “*R&Designing Innovation: Transformational Challenges for Organizations and Society*”

June, 30<sup>th</sup> -July, 4<sup>th</sup>, 2018, Milan, Italy

of the firm in quickly changing environments. Although the workshop name already carries elements that contribute to the three aspects, as can be seen in table 3, the subsequent concept formulations contribute to at least one of the aspects and allow improving the exploration’s performance.

The dynamic on increasing the cognitive generative power is launched with the workshop name, by giving a first frontier. The generativity is then expanded through the initial concept formulation. This expansion allows formulating new unknowns that have potential value and that increase the cognitive generative power, the creativity stimulus or the pre-exploration tree. The exploratory control map and the detailed concept map are both tools thanks to which the cognitive generative power is made explicit and they can therefore be used as guidance to increase it.

The collaborative attractiveness for new organizations experimentations also begins with the workshop name. It is a first means to interest different actors that don’t necessarily work together to start new collaborations and to participate in an exploratory project. The initial concept for exploration further details on what the organization experimentations could be, and attract new actors thanks to this detail. The exploratory control map allows identifying possible barriers to collaborations by identifying fixation effects inside the firm. The creativity stimulus and the pre-exploration tree allow federating the workshop participants around new propositions, a further step in collaboration. Finally, the conceptual argument tree allows to communicate about the exploratory project and to attract new actors.

The strategic positioning renewal also starts with the workshop’s name. It is used to get the top management’s agreement to explore a direction that might renew the strategy. Once there is an agreement for working on strategic path renewal, the initial concept formulation, the creativity stimulus and the pre-exploration trees are used to stimulate the workshop participants to propose alternatives. The detailed conceptual map retraces all the different exploration paths, and allows positioning the different possible strategies. It is a tool to propose new activities and new strategy shifts. Finally the conceptual argument tree allows clarifying the strategic intent and discussing the strategic positioning renewal with top management.

### *5.3 Specific patterns of concept formulation*

The longitudinal analyses of concepts formulation over 8 years of practice underlined the increasing ability of exploratory projects stakeholders involved in concept formulation to elicit jointly the three dimension of the desirable unknown. In particular, we observed in this firm that innovation support team progressively stabilized some features of the different types of concept formulation. As can be seen in the sample of eight projects in table 2, the use of the symbol “@” in the stand alone concepts is recurring. It was a way for the project managers to integrate the challenges brought about by digitalization. By doing so, they improved the cognitive generative power of the concept formulations.

The creativity stimulus’ format also evolved over time, starting from a title and a list of images and words, they became more structured over time, with the addition of a subtitle and the introduction of tensions between different possible positions in the images and formulations. This was justified by the practitioners by saying it facilitated interactions during the creativity sessions and produced richer explorations. It was a way to improve both the cognitive and managerial impact of the creativity stimulus.

Another stabilization observed concerns the detailed concept map and the conceptual argument tree. Both evolved to always contain exploration paths on four aspects: the object; the societal and technical context; organization and skills; and the ecosystem, as can be seen in Figure 3. The reason why these aspects are always included is because they insure a better coverage of the three dimensions we cited before. Cognitive generative power is increased by having at least four different paths. Collaborative attractiveness for new organizations experimentation is improved by systematically asking questions about the ecosystem and the organization, which mean identifying new partnerships and new ways to collaborate. And finally these four aspects improve strategy renewal: it would be easy to work only on technical objects when on an exploratory project, but that would not allow the organization to make its strategy evolve.

## **6. Conclusion**

Our research clarifies benefits for innovation capability and managerial goals achievement of seven types of conceptual formulation. Eliciting their interactions, we propose a new theoretical model for cognitive involvement of individuals and commitment of collaborators on disruptive innovation activities. Our research furthermore allows better understanding the enlarged impact of exploration projects: the “desirable unknown” explored has implications for innovation management far beyond the intent of a single workshop. That is a major difference with exploitation project management, where early goal definition restricts impact of workshop to what was planned.

Paper submitted to:

R&D Management Conference 2018 *"R&Designing Innovation: Transformational Challenges for Organizations and Society"*

June, 30<sup>th</sup> -July, 4<sup>th</sup>, 2018, Milan, Italy

Our research gives more indications on how to build a conceptual formulation to reach innovation goals. It's not only about choice between different formulations but developing a process of formulation based on cognitive and social goals management. It allows us explaining how the succession of conceptual tools before, during and after creativity sessions is a design process that embeds the strategic purpose of disruptive innovation activities. In addition, seeing concepts as a tool to manage as a set helps managers to use the best formulation to interact with stakeholders of innovation activities.

## References

- Adler, N., R. Shani and A. Styhre (Eds.). 2004. *Collaborative Research in Organizations: Foundations for Learning, Change and Theoretical Development*. Sage Publications, Thousand Oaks, CA.
- Agogué, M., A. Kazakçi, A. Hatchuel, P. Le Masson, B. Weil, N. Poirel and M. Cassotti. 2013. "The impacts of examples on creative design: explaining fixation and stimulation effects". *Journal of Creative Behavior*.
- Akrich, M., M. Callon and B. Latour. 1988. "A Quoi Tient Le Succès des Innovations? 1. L'Art de l'Intéressement". *Annales des Mines, Gérer et Comprendre*, 11, 4-17. (Translation, Akrich, M., Callon, M., Latour, B., & Monaghan, A. (2002). *The key to success in innovation part I: the art of interessement*. *International journal of innovation management*, 6(02), 187-206.)
- Beretta, M., J. Björk and M. Magnusson. 2018. "Moderating Ideation in Web-Enabled Ideation Systems". *Journal of Product Innovation Management*, 35(3), 389-409.
- Björk, J. and M. Magnusson. 2009. "Where do good innovation ideas come from? Exploring the influence of network connectivity on innovation idea quality". *Journal of Product Innovation Management*, 26, 662-670.
- Braha, D. and Y. Reich. 2003. "Topological structures for modelling engineering design processes". *Research in Engineering Design*, 14(4), pp185-199.
- Boeddrich, H. J. 2004. "Ideas in the workplace: a new approach towards organizing the fuzzy front end of the innovation process". *Creativity and Innovation Management*, 13, 274-285.
- Burgelman, R. A. 1991. "Intraorganizational ecology of strategy making and organizational adaptation: Theory and field research". *Organizational Science*, 2: 239-262.
- Cohendet, P. and P. Llerena. 2003. "Routines and Incentives: The Role of Communities in the Firm". *Industrial and Corporate Change*, 12, 271-97.
- Cooper, R. G. 1990. "Stage-gate systems: a new tool for managing new products". *Business horizons*, 33(3), 44-54.
- Cooper, R. G., and S. Edgett. 2008. "Ideation for product innovation: What are the best methods". *PDMA visions magazine*, 1(1), 12-17.
- Cowan, R., P. A. David and D. Foray. 2000. "The explicit economics of knowledge codification and tacitness". *Industrial and corporate change*, 9(2), 211-253.
- Diehl, M. and W. Stroebe. 1991. "Productivity Loss in Idea-Generating Groups: Tracking Down the Blocking Effect," *Journal of Personality and Social Psychology*, (61) 3, pp. 392-403.
- Elmqvist, M. and B. Segrestin. 2009. "Sustainable development through innovative design: lessons from the KCP method experimented with an automotive firm". *International Journal of Automotive technology and management*, 9(2), 229-244.
- Fauconnier, G. and M. Turner. 1998. "Conceptual integration networks". *Cognitive science*, 22, 133-187.
- Floyd, S. and P. Lane. 2000. "Strategizing throughout the organization: Managing role conflict in strategic renewal". *Academy of Management Review*, 25: 154-177.
- Freeman, R.E. 1983. "Strategic Management a Stakeholder Approach", *Advances in Strategic Mgt* pp 31-60.
- Gallupe, R. B., A. R. Dennis, W. H. Cooper, J. S. Valacich et al. 1992. "Electronic Brainstorming and Group Size," *Academy of Management Journal* (35) 2, pp. 350-369.
- Gillier, T., S. Hooge and G. Piat. 2015. "Framing value management for creative projects: An expansive perspective". *International Journal of Project Management*, 33(4), 947-960.
- Girotra, K., C. Terwiesch and K. T. Ulrich. 2010. "Idea generation and the quality of the best idea". *Management Science*, 56, 591-605.
- Hatchuel, A., P. Le Masson, Y. Reich and E. Subrahmanian. 2017. "Design theory: a foundation of a new paradigm for design science and engineering". *Research in Engineering Design*, 1-17.
- Hatchuel, A. and B. Weil. 2003. "A new approach of innovative Design: an introduction to CK theory". In *DS 31: Proceedings of ICED 03, the 14th International Conference on Engineering Design*, Stockholm.
- Hatchuel, A., and B. Weil. 2009. "CK design theory: an advanced formulation". *Research in engineering design*, 19(4), 181.
- Hooge, S., M. Béjean and F. Arnoux. 2016. "Organising for radical innovation: The benefits of the interplay between cognitive and organisational processes in KCP workshops". *International Journal of Innovation Management*, 20(4), 33.
- Katz, R. and T. J. Allen. 1982. "Investigating the Not Invented Here (NIH) syndrome: A look at the performance, tenure, and communication patterns of 50 R & D Project Groups". *R&D Management*, 12(1), 7-20.

Paper submitted to:

R&D Management Conference 2018 "*R&Designing Innovation: Transformational Challenges for Organizations and Society*"

June, 30<sup>th</sup> -July, 4<sup>th</sup>, 2018, Milan, Italy

- MacCrimmon, K. R. and C. Wagner. 1994. "Stimulating Ideas through Creativity Software," *Management Science* (40) 11, pp. 1514-1532.
- Kazakçı, A., T. Gillier, G. Piat and A. Hatchuel. 2014. "Brainstorming versus creative designreasoning: A theory-driven experimental investigation of novelty, feasibility and value of ideas". *Designcomputing and cognition* 2014, Jun 2014, London, United Kingdom. pp.1-20, 2014.
- Koestler, A. 1964. *The act of creation*, Penguin Books, New York, 751p.
- Le Masson P., A. Hatchuel and B. Weil. 2011. "The Interplay Between creativity issues and design theories: a new perspective for design management studies?" *Creat Innov Manag* 20(4):217–237
- Le Masson P., A. Hatchuel and B. Weil. 2009. "Design theory and collective creativity: a theoretical framework to evaluate KCP process". In *DS 58-6: Proceedings of ICED 09, the 17th International Conference on Engineering Design*, Vol. 6, Design Methods and Tools (pt. 2), Palo Alto, CA, USA, 24.-27.08. 2009.
- Le Masson, P., B. Weil and A. Hatchuel. 2017. *Design Theory*. Springer International Publishing AG.
- Lenfle, S. 2016. "Floating in space? On the strangeness of exploratory projects". *Project Management Journal*, 47(2), 47-61.
- Levinthal, D. A. and J. G. March. 1993. "The myopia of learning". *Strategic Management Journal*, 14: 95-112.
- Magnusson, P. R., E. Wästlund, and J. Netz. 2016. "Exploring users' appropriateness as a proxy for experts when screening new product/service ideas". *Journal of Product Innovation Management*, 33(1), 4-18.
- Nonaka, L. 1994. "A dynamic theory of organizational knowledge creation". *Organization Science*, 5: 714-737.
- Osborn, A.F. 1953. *Applied Imagination, principles and procedures of creative thinking*.
- Plucker, J. A., R. A. Beghetto and G. T. Dow. 2004. "Why Isn't Creativity More Important to Educational Psychologists? Potentials, Pitfalls, and Future Directions in Creativity Research," *Educational Psychologist*, (39) 2, pp. 83-96.
- Reitzig, M., and O. Sorenson. 2013. "Biases in the selection stage of bottom-up strategy formulation". *Strategic Management Journal*, 34(7), 782-799.
- Runco, M. A. and R. E. Charles. 1993. "Judgments of Originality and Appropriateness as Predictors of Creativity," *Personality and Individual Differences* (15) 5, pp. 537-546.
- Shai, O. and Y. Reich. 2004. "Infused Design: I Theory". *Research in Engineering Design*, 15(2), pp93-107.
- Shani, R., Mohrman, S., Pasmore, W., Stymne, B., Adler, N. 2008. *Handbook of Collaborative Management Research*. Sage Publications, Thousand Oaks, CA.
- Smith, S. M., T. B., Ward and J. S. Schumacher. 1993. "Constraining effects of examples in a creative generation task". *Memory & Cognition*, 21 , 837-845.
- Smith, S. M. 2003. "The constraining effects of initial ideas". *Group creativity: Innovation through collaboration*, 15-31.
- Suh, N.P. 1990. *Principles of Design*. Oxford University Press, New York.
- Taura, T. and Y. Nagai. 2012. *Concept generation for design creativity: A systematized theory and methodology*, London: Springer-Verlag.
- Torrance, E. P. 1965. *Rewarding creative behavior*. Englewood Cliffs, NJ: PrenticeHall.
- Van de Ven, A. H. 1986. "Central problems in the management of innovation". *Management science*, 32(5), 590-607.
- Ward, T. B., M. J. Patterson and C. M. Sifonis. 2004. "The role of specificity and abstraction in creative idea generation". *Creativity Research Journal*, 16 , 1-9.
- Weick, K. E. 1995. *Sensemaking in organizations*. London: Sage.
- Zhu, H., A. Kock, M. Wentker and J. Leker. 2018. "How Does Online Interaction Affect Idea Quality? The Effect of Feedback in Firm. Internal Idea Competitions". *Journal of Product Innovation Management*.