



**HAL**  
open science

## Co-optimization of oil recovery and CO<sub>2</sub> storage for cyclic CO<sub>2</sub> flooding in ultralow permeability reservoirs

Lili Sun, Xining Hao, Hongen Dou, Caspar Daniel Adenutsi, Zhiping Li,  
Yunjun Zhang

► **To cite this version:**

Lili Sun, Xining Hao, Hongen Dou, Caspar Daniel Adenutsi, Zhiping Li, et al.. Co-optimization of oil recovery and CO<sub>2</sub> storage for cyclic CO<sub>2</sub> flooding in ultralow permeability reservoirs. *Oil & Gas Science and Technology - Revue d'IFP Energies nouvelles*, 2018, 73, pp.42. 10.2516/ogst/2018041 . hal-01897119

**HAL Id: hal-01897119**

**<https://hal.science/hal-01897119>**

Submitted on 16 Oct 2018

**HAL** is a multi-disciplinary open access archive for the deposit and dissemination of scientific research documents, whether they are published or not. The documents may come from teaching and research institutions in France or abroad, or from public or private research centers.

L'archive ouverte pluridisciplinaire **HAL**, est destinée au dépôt et à la diffusion de documents scientifiques de niveau recherche, publiés ou non, émanant des établissements d'enseignement et de recherche français ou étrangers, des laboratoires publics ou privés.

# Co-optimization of oil recovery and CO<sub>2</sub> storage for cyclic CO<sub>2</sub> flooding in ultralow permeability reservoirs

Lili Sun<sup>1,2</sup>, Xining Hao<sup>3</sup>, Hongen Dou<sup>4,\*</sup>, Caspar Daniel Adenutsi<sup>2</sup>, Zhiping Li<sup>2</sup>, and Yunjun Zhang<sup>4</sup>

<sup>1</sup> CNPC Technology and Economics Research Institute, Beijing 100724, China

<sup>2</sup> School of Energy Resources, China University of Geosciences, Beijing 100083, China

<sup>3</sup> Research Institute of China National Offshore Oil Corporation, Beijing 100027, China

<sup>4</sup> Research Institute of Petroleum Exploration and Development, Beijing 100083, China

Received: 29 July 2017 / Accepted: 17 July 2018

**Abstract.** Cyclic CO<sub>2</sub> flooding is an efficient method to enhance oil recovery in ultralow permeability reservoirs. As the demand for low carbon economy development, co-optimization of CO<sub>2</sub> storage and utilization should be considered. In this research, initially a comprehensive optimization method was proposed, which co-optimizes oil recovery and CO<sub>2</sub> storage by different weighting factors. Then, a series of core flooding experiments were performed using the core samples collected from Changqing oilfield, which is a ultralow permeability reservoir with heterogeneity and micro-cracks, CO<sub>2</sub> injection parameters of slug size and Injection-Soaking Time Ratio (ISR) were optimized. The results revealed that the optimal injection parameters changed for different optimization objectives. In the case where equal important to oil recovery and CO<sub>2</sub> storage were considered, the optimum CO<sub>2</sub> injection parameters in the ultralow permeability reservoirs were 0.03PV for slug size and 1:1 for ISR. Comparing the method of oil recovery optimization ( $\omega_1 = 1$ ) to co-optimization of oil recovery and CO<sub>2</sub> storage ( $\omega_1 = \omega_2 = 0.5$ ), oil recovery was reduced by 8.93%, CO<sub>2</sub> storage was significantly increased by 25.85%. The results provide an insight into parameter optimization of CO<sub>2</sub> enhanced oil recovery design.

## 1 Introduction

With advancement in the world petroleum industry, the development of low permeability oil fields has attracted more attention. However, conventional recovery methods are not effective in ultralow permeability reservoirs. Due to the nature of ultralow permeability reservoirs (poor physical properties, heavy heterogeneity and natural micro-fracture), water flooding recovery remains low even though long horizontal wells have been drilled and massively fractured (Christensen *et al.*, 2001; Song and Yang, 2017). As an enhanced oil recovery technology, CO<sub>2</sub>-EOR (e.g. continuous CO<sub>2</sub> injection, carbonated water injection, water-alternating CO<sub>2</sub> injection, and cyclic CO<sub>2</sub> injection) have shown favorable recovery potential while offsetting the greenhouse gas emissions by CO<sub>2</sub> storage underground (Ma *et al.*, 2015). However, each CO<sub>2</sub> injection method has its merits and demerits (Murray *et al.*, 2001; Xu and Saeedi, 2017). Compared with other CO<sub>2</sub> injection methods, cyclic CO<sub>2</sub> injection is benefited from longer soaking period which enlarges the contact area between oil and CO<sub>2</sub>, reduces oil viscosity and interfacial tension, vaporized lighter components of oil, additional it could alleviate CO<sub>2</sub> fingering,

gravity override and channeling effectively. It also has good field application in low permeability oil reservoir (Torabi and Asghari, 2010; Abedini and Torabi, 2014). Although the mechanisms of CO<sub>2</sub> flow and interaction with oil, water and rock are well understood by the scientific community, application and the distinction of these mechanisms in ultralow permeability reservoirs could be difficult (Yu *et al.*, 2015). In addition, the optimal operational parameters of cyclic CO<sub>2</sub> injection have not been recommended. It is therefore of practical significance to evaluate the performance of cyclic CO<sub>2</sub> injection process and optimize the injection parameters in ultralow permeability reservoirs.

In the process of cyclic CO<sub>2</sub> injection, slug size as well as Injection and Soaking time Ratio (ISR) are two major parameters which affect the results (Wolcott *et al.*, 1995). Unfavorable CO<sub>2</sub> injection parameters do not only lower the CO<sub>2</sub> microscopic displacement efficiency, but also aggravate CO<sub>2</sub> viscous fingering and breakthrough due to the large difference in density and viscosity between CO<sub>2</sub> and oil. The traditional approach for parameters optimization is pursuing maximum oil recovery by minimum CO<sub>2</sub> injection (Lv *et al.*, 2015; Liu *et al.*, 2016). However, CO<sub>2</sub> emission reduction has increasingly gained attention while CO<sub>2</sub> storage efficiency is very important in the current

\* Corresponding author: [149658753@qq.com](mailto:149658753@qq.com)

situation of climate change. It is therefore necessary to co-optimize both of oil production and CO<sub>2</sub> storage.

In order to investigate the viability of cyclic CO<sub>2</sub> injection processes in ultralow permeability reservoirs and to optimize the injection parameters based on the combination of oil recovery and CO<sub>2</sub> storage, a new objective function was proposed which includes two parts of oil recovery factor and CO<sub>2</sub> storage factor, every part has distinct weighting factors ( $\omega_1$ ,  $\omega_2$ ), and the weighting factors are changed for different optimization objectives. In this paper, the cyclic CO<sub>2</sub> injection parameters were optimized with equal weighting factors. The result provides guidance for field design and operation of cyclic CO<sub>2</sub> flooding in ultralow permeability reservoirs.

## 2 Methodology

Some researchers have studied optimization of CO<sub>2</sub> storage and oil recovery and the objective functions for parameter optimization were provided (Kovscek and Cakici, 2005; Jahangiri and Zhang, 2010; Kamali and Cinar, 2014). These functions, contain oil recovery factor and CO<sub>2</sub> storage factor, however each function has its method of computing CO<sub>2</sub> storage factor.

Initially, CO<sub>2</sub> storage factor was considered as the ratio of the volume of CO<sub>2</sub> stored to the total pore volume in a reservoir (Kovscek and Cakici, 2005). This ignored the geological limitations and this method assumed that the volume of CO<sub>2</sub> is constant without changing phase with changes in pressure and temperature.

In order to solve this problem, another storage factor was introduced as the ratio of CO<sub>2</sub> stored in reservoir to the total CO<sub>2</sub> storage capacity of the reservoir (Jahangiri and Zhang, 2010). However, the total capacity of CO<sub>2</sub> in reservoir is an uncertain parameter and CO<sub>2</sub> storage capacity in geological formations includes four levels: theoretical, effective, practical and matched storage capacities (Bachu and Shaw, 2003; Shen et al., 2009; DOE, 2010). The calculated results will be different for different level of storage capacities.

To fill this gap, a modified storage factor was proposed which is the ratio of CO<sub>2</sub> stored to the CO<sub>2</sub> injected in reservoir (Kamali and Cinar, 2014). The modified storage factor in this function only represents the injected CO<sub>2</sub> utilization factor rather than reservoir storage. In addition, CO<sub>2</sub> loss was not taken into account from the injector/producer system during EOR project.

In order to estimate the fraction of the CO<sub>2</sub> stored in reservoir accurately, a new CO<sub>2</sub> storage factor is proposed considering the operation loss of CO<sub>2</sub>. The new storage factor is defined as the ratio of the cumulative injected CO<sub>2</sub> minus cumulative produced and loss of CO<sub>2</sub> to theoretical CO<sub>2</sub> storage capacity of the reservoir. The modified objective function is as follows:

$$f = w_1 \frac{N_P}{OIP} + w_2 \frac{M_{CO_2}^I - (M_{CO_2}^P + M_{CO_2}^L)}{M_{CO_2}^T} \quad (1)$$

$$\begin{aligned} M_{CO_2}^T &= M_{CO_2str_i} + M_{CO_2so_i} + M_{CO_2sw_i} \\ &= \rho_{CO_2} \times [E_R Ah \phi (1 - S_{wi}) + C_{ws} Ah \phi S_{wi} \\ &\quad + C_{os} (1 - E_R) Ah \phi (1 - S_{wi})], \end{aligned} \quad (2)$$

where,  $N_P$  is the net oil production, m<sup>3</sup>; and OIP is oil in place at the start of CO<sub>2</sub> injection, m<sup>3</sup>;  $M_{CO_2}^P$  is the cumulative produced CO<sub>2</sub>, t;  $M_{CO_2}^I$  is the cumulative injected CO<sub>2</sub>, t;  $M_{CO_2}^L$  is the cumulative loss CO<sub>2</sub>, t;  $M_{CO_2}^T$  is the theoretical CO<sub>2</sub> storage capacity in reservoir which is calculated by Shen Pingping's method, t; the formula as shown in equation (2) (Shen et al., 2009; Sun et al., 2017);  $\omega_1$  and  $\omega_2$  are the weighting factors for oil recovery and CO<sub>2</sub> storage reflecting the extent of subjective intentions;  $\omega_1 + \omega_2 = 1$ . Selecting the appropriate weighting factor is very important and it is related to the revenue and policy of the producing country. If the goal is maximum oil recovery factor, then  $\omega_1 = 1$ . However, if the goal is maximum CO<sub>2</sub> storage factor, then  $\omega_2 = 1$ . In this paper, an equal weighting factor ( $\omega_1 = \omega_2 = 0.5$ ) is assigned, indicating the equal importance of oil production and CO<sub>2</sub> storage.

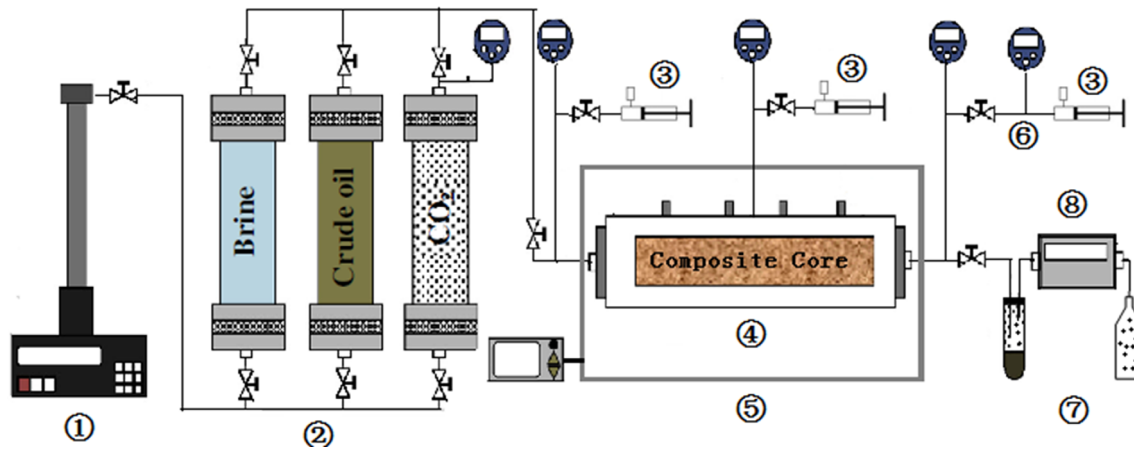
There is no exact data on CO<sub>2</sub> loss in the Industry Data Set. CO<sub>2</sub> loss mainly includes surface loss and subsurface loss. Surface CO<sub>2</sub> loss is that part of CO<sub>2</sub> in pipe that is released to the atmosphere during the process of power outages or equipment repair. Subsurface CO<sub>2</sub> loss is that part of CO<sub>2</sub> that laterally migrates outside of the production wells or which is not captured by the recycling loop but remains in the subsurface. In this paper, according to industry experience, 5% of cumulative injected CO<sub>2</sub> is assumed to be the cumulative CO<sub>2</sub> loss (DOE, 2010; Azzolina et al., 2015).

## 3 Experimental section

### 3.1 Experimental material and apparatus

In this study, coreflooding experiments were conducted with a 2.50 cm diameter, 85.03 cm long natural composite core from Changqing oilfields located in Ordos sedimentary basin, northwest China. The reservoirs in this basin generally feature ultralow porosity, ultralow permeability, microfracture and strong heterogeneity. The average porosity is 9.6%, and average permeability is 0.27 mD. The experimental oil and brine were obtained from the same area as the core. The viscosity of crude oil is 0.95 mPa s, the salinity of brine is 78 g/L. and the purity of CO<sub>2</sub> is 99.99%. CO<sub>2</sub> flooding can be classified as immiscible and miscible based on the reservoir pressure. In an earlier tubule experiment, the Minimum Miscible Pressure (MMP) was measured as 20.78 MPa, which is lower than the initial reservoir pressure of 21.9 MPa. Therefore under the current reservoir condition, the flooding is miscible flooding.

In cyclic CO<sub>2</sub> injection tests, the experimental apparatus consists of three parts: injection part, displacement part and metering part. Injection part includes three intermediate containers connected with a displacement pump to inject fluids. The displacement part includes a high pressure stainless steel core holder with a corrosion resistance of



**Fig. 1.** Schematic diagram of the experimental apparatus used for cyclic CO<sub>2</sub> injection tests. Displacement pumps; intermediate container; manual pump; core holder; isothermal case; back pressure regulator; sample collector; gas flow meter.

synthetic rubber sleeve, a back pressure regulator connected to the end of the core holder maintaining the core pressure of 21.9 MPa, and two pressure gauges monitoring the core and the annulus pressure respectively. The annulus pressure was maintained at a value of around 2 MPa higher than the core pressure to avoid the core being ruptured. The metering part includes a three phase separator at ambient conditions used for metering the production of gas and oil. The entire apparatus excluding the displacement pump is housed in an isothermal case to maintain the experiment temperature at 84 °C. The schematic diagram of the experimental set up is shown in Figure 1.

### 3.2 Experimental procedure

Prior to the coreflooding experiments, the core samples were cleaned, vacuumed, and saturated with brine to obtain the pore volume and permeability at reservoir conditions. The pore volume obtained is 40.1 cm<sup>3</sup>. Thereafter, the core sample was saturated with live oil to establish the initial oil saturation and connate water saturation. The initial oil saturation is 54.4% while the irreducible water saturation is 45.6%. After the core sample was saturated with oil and kept in oil to re-establish its wettability. In addition, based the Shen Pingping's method, according to the condition of reservoirs, the value of basic parameters, such as initial water saturation  $E_R$  is 20%, CO<sub>2</sub> density in formation  $\rho_{CO_2}$  is 0.751 t/m<sup>3</sup>, CO<sub>2</sub> solubility in brine  $C_{ws}$  is 0.049, CO<sub>2</sub> solubility in oil is 0.35, the theoretical CO<sub>2</sub> storage capacity was calculated as  $12.66 \times 10^{-6}$  t (Shen *et al.*, 2009; Sun *et al.*, 2017).

When the preparation was completed, the cyclic CO<sub>2</sub> flooding experiment was started by injecting supercritical CO<sub>2</sub> with a constant flow rate of 0.05 mL/min. In each cycle, supercritical CO<sub>2</sub> was injected into the core with injection slug of 0.03–0.1 PV and injection time of 2–6.5 h after which the injection end closes for a soaking period of 1–13 h. During the entire process, the production end opens. The injection-soaking process described above is one cycle. The cycle process continues until there is no

considerable oil production. In each cycle, cumulative produced oil, injected and produced CO<sub>2</sub> were measured, oil recovery factor, CO<sub>2</sub> storage factor and the objective function were calculated and complex drive and storage mechanisms were analyzed. Finally the optimal injection parameters were determined by co-optimizing oil recovery and CO<sub>2</sub> storage. Detailed experimental design is shown in Table 1. All these operations were carried out at reservoir conditions (21.9 MPa and 84 °C).

## 4 Experimental results and discussion

### 4.1 The objective function

In this section, a total of nine cyclic CO<sub>2</sub> injection tests were carried out at different injection scenarios under miscible conditions. Figure 2 depicts objective function *versus* cumulative injected CO<sub>2</sub> at different injection scenarios. It was observed that the objective function increases with cumulative CO<sub>2</sub> injection, and the value increased rapidly during the initial stage. It was mainly attributed to a faster and strong CO<sub>2</sub> drive and storage mechanism (Cao and Gu, 2013; Vahid *et al.*, 2017). Some of the injected CO<sub>2</sub> dissolved in oil and improved the oil mobility by oil volume expansion and viscosity reduction. Some of the injected CO<sub>2</sub> displaced and occupied the pore space of produced oil to store CO<sub>2</sub>. However, with increase of cumulative injected CO<sub>2</sub>, the curve became gradually flatter. This is because CO<sub>2</sub> viscous fingering and gravity segregation reduced the CO<sub>2</sub> sweep volume and resulted in CO<sub>2</sub> breakthrough which drastically declined oil production and CO<sub>2</sub> storage.

Table 2 shows cyclic CO<sub>2</sub> injection test results conducted at different injection scenarios. As can be seen from the table, with increase in CO<sub>2</sub> slug size, objective function decreased from 54.18% for 0.03 PV (run 2) to 27.85% for 0.1 PV (run 9). In addition, the injection process of each run before gas breakthrough contributed the majority of the ultimate value. The objective function only increased by 6%–10% after gas breakthrough. The same trend could



**Table 1.** Experiment scenarios of cyclic CO<sub>2</sub> injection.

Run	CO <sub>2</sub> slug size (PV)	ISR	Injection rate (mL/min)
1	0.03	2:1	0.05
2	0.03	1:1	0.05
3	0.03	1:2	0.05
4	0.06	2:1	0.05
5	0.06	1:1	0.05
6	0.06	1:2	0.05
7	0.1	2:1	0.05
8	0.1	1:1	0.05
9	0.1	1:2	0.05

also be observed for oil recovery factor and CO<sub>2</sub> storage factor. Gas breakthrough is a key factor which affects oil recovery and CO<sub>2</sub> storage. The later CO<sub>2</sub> breakthrough occurred, the more oil produced and CO<sub>2</sub> stored. Therefore, in order to achieve more oil production and CO<sub>2</sub> storage, the injection parameters should be optimized to delay gas breakthrough (Bachu *et al.*, 2007).

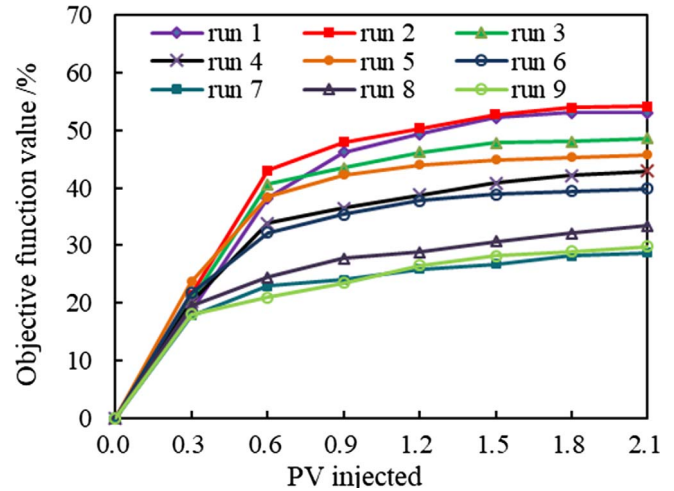
#### 4.2 Effects of slug size

CO<sub>2</sub> slug size is an important factor affecting the effect of cyclic CO<sub>2</sub> injection (Wang *et al.*, 2013). In order to study the effects of CO<sub>2</sub> slug on oil recovery factor and CO<sub>2</sub> storage factor, three groups of cyclic CO<sub>2</sub> injection experiments were carried out with different CO<sub>2</sub> slug sizes (0.03, 0.06 and 0.1 PV). The ultimate oil recovery factor of all cyclic CO<sub>2</sub> injection tests *versus* CO<sub>2</sub> slug size are illustrated in Figure 3. As can be seen from this figure, the ultimate oil recovery increases firstly and then decreases with the increase in CO<sub>2</sub> slug size. The main reason is that a large CO<sub>2</sub> slug (0.1 PV) might have larger contact areas between the oil and CO<sub>2</sub> phases than a small CO<sub>2</sub> slug (0.03 PV), resulting in a greater reduced oil viscosity. However, a large slug size is easy to induce CO<sub>2</sub> breakthrough, decreasing oil recovery drastically after breakthrough. In this paper, the peak of ultimate oil recovery is 57.86% when CO<sub>2</sub> slug is 0.06 PV.

Figure 4 shows CO<sub>2</sub> storage factor *versus* CO<sub>2</sub> slug size in different injection tests. Comparison of CO<sub>2</sub> storage factor among 0.03 PV, 0.06 PV, and 0.1 PV suggests that when injected CO<sub>2</sub> slugs increase, CO<sub>2</sub> storage factor decreases from 61.35% for 0.03 PV to 29.46% for 0.1 PV. A small CO<sub>2</sub> slug seems to be more favorable for CO<sub>2</sub> storage, because it is helpful for controlling and delaying gas breakthrough.

#### 4.3 Effect of injection-soaking time ratio

Injection-soaking time ratio, defined as the ratio of injection time to soaking time, is another major operating parameter in cyclic CO<sub>2</sub> injection. For a long period of time, the

**Fig. 2.** Objective function value *vs.* PV CO<sub>2</sub> injected for  $\omega_1 = \omega_2 = 0.5$ .

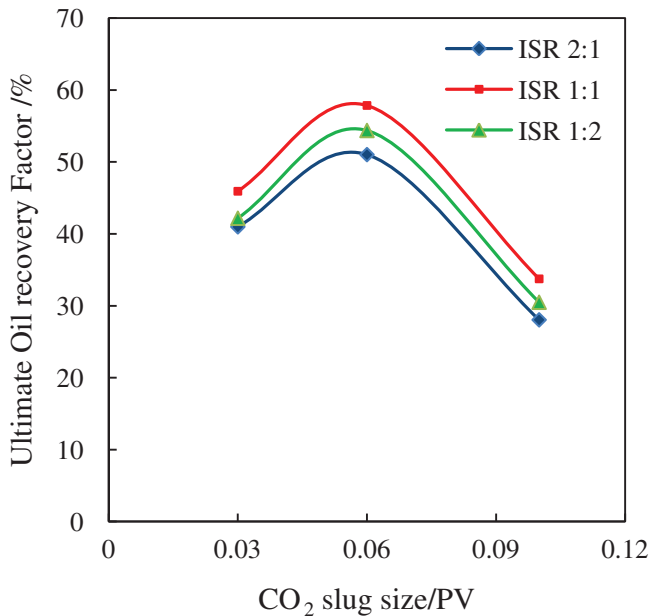
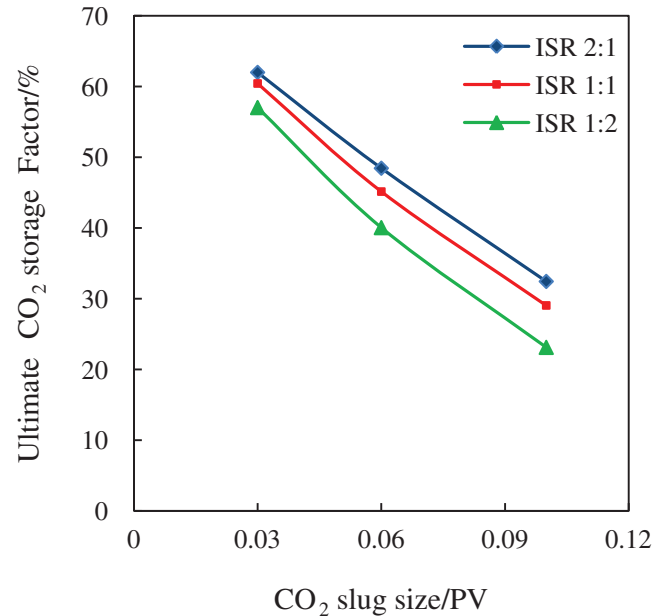
determination of soaking time relies on field experiences without theoretic basis. In this paper, three group of ISR (2:1, 1:1 and 1:2) were implemented to investigate its effect on cyclic CO<sub>2</sub> injection. Figure 5 shows the ultimate oil recovery factor *versus* ISR in different injection tests. The results indicated that the maximum oil recovery factor of 57.86% is obtained at ISR of 1:1. This is higher than the oil recovery obtained from ISR 2:1 and 1:2, because the soaking time mainly affects the amount of CO<sub>2</sub> dissolved in the oil phase. If the ISR is too high, CO<sub>2</sub> cannot spread into the deep formation and a large amount of CO<sub>2</sub> will gather around the wellbore, which increases injection-production pressure difference. This results in the reduction of CO<sub>2</sub> sweep areas and the ultimate oil recovery factor. If the ISR is too low, CO<sub>2</sub> can be fully dissolved in crude oil but the longer soaking time has little contribution to improve oil recovery and the amount of CO<sub>2</sub> injection is small in each cycle. This weakens the ability of CO<sub>2</sub> to expand the crude oil and reduce viscosity, thus reducing the oil recovery factor.

Figure 6 shows CO<sub>2</sub> storage factor *versus* ISR in different injection tests. The results revealed that ultimate CO<sub>2</sub> storage factor increases with ISR and the maximum CO<sub>2</sub> storage factor is 61.35% for ISR of 2:1. The higher the ISR, the more CO<sub>2</sub> injected and although CO<sub>2</sub> production and loss may be increased, CO<sub>2</sub> storage will also be increased. Under the action of buoyancy, some injected CO<sub>2</sub> is left behind as disconnected or residual droplets in rock interstices and seals and some migrates and dissolves into formation fluid. Those are the two main storage mechanisms (residual and solubility trapping) which take a significant percentage of total CO<sub>2</sub> stored (Ampomah *et al.*, 2016; Liang *et al.*, 2016).

Because oil recovery and CO<sub>2</sub> storage factor exhibit different trends with CO<sub>2</sub> injection parameters, for low permeability reservoirs, injection parameter optimization is a complicated process, which depends on specific field conditions with balances between oil recovery factor and CO<sub>2</sub> storage factor. The objective function established in

**Table 2.** summary of cyclic CO<sub>2</sub> injection experiment results.

Runs	PV		Function value/%		Oil recovery factor/%		CO <sub>2</sub> storage factor/%	
	Breakthrough		Breakthrough	Ultimate	Breakthrough	Ultimate	Breakthrough	Ultimate
1	0.84		46.22	53.09	36.73	44.83	55.71	61.35
2	0.66		45.48	54.18	41.98	48.93	48.98	59.43
3	0.57		40.56	48.6	34.38	40.17	46.74	57.03
4	0.78		34.45	42.93	37.29	53.02	31.61	32.84
5	0.54		35.49	45.72	47.20	57.86	23.78	33.58
6	0.42		30.71	39.9	29.71	54.38	31.71	25.42
7	0.6		22.44	28.75	24.23	28.04	20.65	29.46
8	0.4		20.57	33.4	20.57	33.74	20.57	33.06
9	0.3		18.01	27.85	16.98	27.49	19.04	28.21

**Fig. 3.** Oil recovery factor *vs.* CO<sub>2</sub> slug size.**Fig. 4.** CO<sub>2</sub> storage factor *vs.* CO<sub>2</sub> slug size.

Section 2 can be provided for co-optimization of oil production and CO<sub>2</sub> storage.

#### 4.4 Results comparison and analysis

As mentioned above, due to the different mechanisms of CO<sub>2</sub> drive and storage, CO<sub>2</sub> injection parameters have different influences on oil recovery factor and CO<sub>2</sub> storage factor. In order to investigate the effect of the co-optimization method on different scenarios, three optimization goals were used for comparison and analysis (only for oil recovery factor,  $\omega_1 = 1$ ; only for CO<sub>2</sub> storage factor,  $\omega_2 = 1$ ; co-optimization of oil recovery and CO<sub>2</sub> storage,  $\omega_1 = \omega_2 = 0.5$ ).

The results are illustrated in Figures 2, 7, 8. As can be seen from these figures, the highest oil recovery with  $\omega_1 = 1$  is 57.86% and was obtained from run 5 (0.06PV for CO<sub>2</sub> slug, 1:1 for ISR). The highest CO<sub>2</sub> storage

efficiency with  $\omega_2 = 1$  is 61.35% and was obtained from run 1 (0.03 PV for CO<sub>2</sub> slug, 2:1 for ISR). However, run 2 (0.03 PV for CO<sub>2</sub> slug, 1:1 for ISR) gave the maximum value of the objective function for the co-optimization method (as shown from Fig. 2).

Table 3 shows the maximum value of the objective function for different optimization methods. The results revealed that the oil recovery factor is 48.93% and CO<sub>2</sub> storage factor is 59.43% when the objective function value is maximum for co-optimization method ( $\omega_1 = \omega_2 = 0.5$ ). Although the oil recovery is lower than the maximum oil recovery (57.86% for oil recovery optimization method  $\omega_1 = 1$ ), CO<sub>2</sub> storage factor increases from 33.58% to 59.43%. The co-optimization method which combines the oil recovery with CO<sub>2</sub> storage factor is better, especially in the context of global warming. It provides a win-win solution to achieve economic and social benefits.

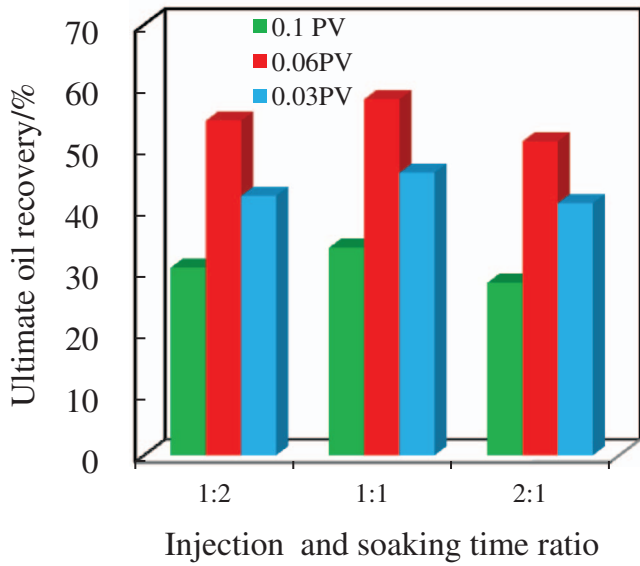


Fig. 5. Oil recovery factor vs. ISR.

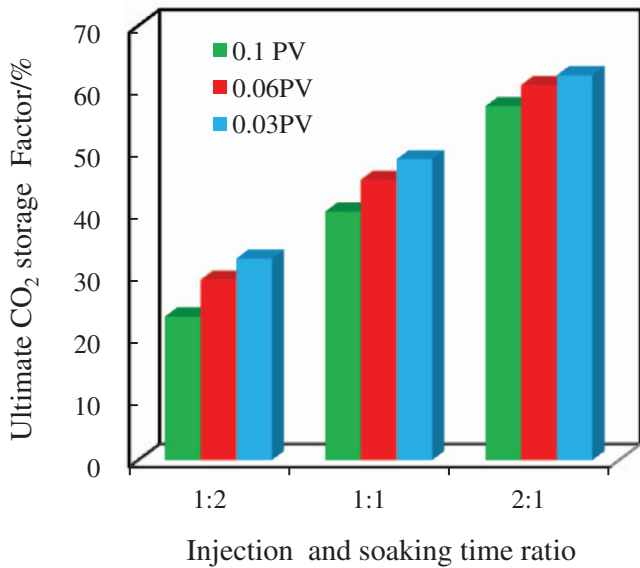


Fig. 6. CO<sub>2</sub> storage factor vs. ISR.

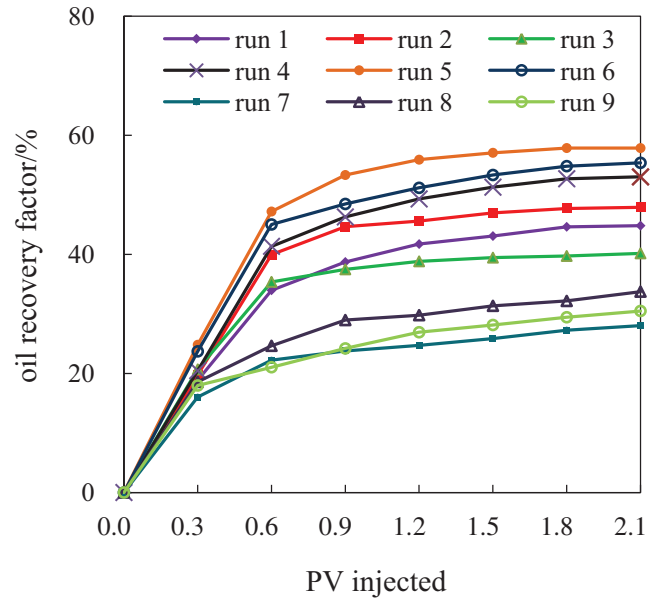


Fig. 7. Oil recovery factor vs. CO<sub>2</sub> injected PV for ω<sub>1</sub> = 1.

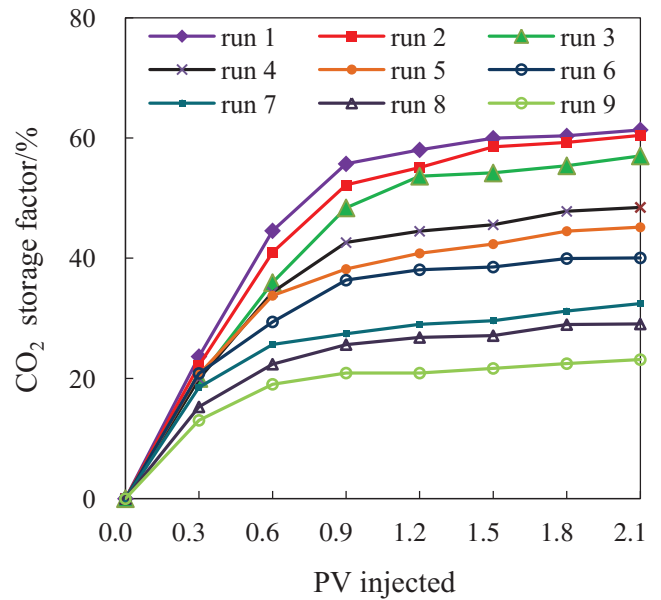


Fig. 8. CO<sub>2</sub> storage factor vs. CO<sub>2</sub> injected PV for ω<sub>2</sub> = 1.

Table 3. Maximum objective function values comparison for different optimization methods.

Method	Slug size	ISR	Objective function value	Oil recovery factor	CO <sub>2</sub> storage factor
Oil recovery, ω <sub>1</sub> = 1	0.06	1:1	57.86	57.86	33.58
CO <sub>2</sub> storage, ω <sub>2</sub> = 1	0.03	2:1	61.35	44.83	61.35
Co-optimization, ω <sub>1</sub> = ω <sub>2</sub> = 0.5	0.03	1:1	54.18	48.93	59.43

## 5 Conclusion

Cyclic CO<sub>2</sub> injection is an effective method for enhanced oil recovery and CO<sub>2</sub> storage in ultralow permeability oil reservoirs. Through the optimization of injection parameters, a more economically profitable, as well as environmentally friendly enhanced oil recovery/CO<sub>2</sub> storage can be achieved.

1. A co-optimization method was established which coupled the oil recovery and CO<sub>2</sub> storage and considered the loss of CO<sub>2</sub> in actual operation. It gives a guidance on the optimization of CO<sub>2</sub>-EOR reservoir engineering design.
2. The injection parameters are important factors which affect oil recovery and CO<sub>2</sub> storage. For equal weight factor, the optimal injection slug size was 0.03 PV and ISR was 1:1, while slug size was 0.03 PV and ISR was 2:1 for the highest oil recovery, and slug size was 0.06 PV and ISR was 1:1 for the highest CO<sub>2</sub> storage. The most important thing is to delay gas breakthrough in reservoirs.
3. Comparing the three optimization goals, the co-optimization function which considered equal weight factors ( $\omega_1 = \omega_2 = 0.5$ ) gave the best results with economic and environmental benefits with a reasonable oil recovery factor of 48.93% and CO<sub>2</sub> storage factor of 59.43%.

*Acknowledgments.* This work was sponsored by the National Major S&T Project (No. 2016ZX05037-006).

## References

- Abedini A., Torabi F. (2014) On the CO<sub>2</sub> storage potential of cyclic CO<sub>2</sub> injection process for enhanced oil recovery, *Fuel* **124**, 14–27.
- Ampomah W., Balch R., Cather M. (2016) Evaluation of CO<sub>2</sub> storage mechanisms in CO<sub>2</sub> enhanced oil recovery sites: application to Morrow sandstone reservoir, *Energ. Fuel*. **30**, 10, 8545–8555.
- Azzolina N.A., Nakles D.V., Gorecki C.D. (2015) CO<sub>2</sub> storage associated with CO<sub>2</sub> enhanced oil recovery: A statistical analysis of historical operations, *Int. J. Greenh. Gas. Con.* **37**, 384–397.
- Bachu S., Shaw J. (2003) Evaluation of the CO<sub>2</sub> sequestration capacity in Alberta's oil and gas reservoirs at depletion and the effect of underlying aquifers, *J. Can. Pet. Technol.* **42**, 9, 51–61.
- Bachu S., Bradshaw J., Bonijoly D., Burruss R., Holloway S., Christensen N.P., Mathiassen O.M. (2007) CO<sub>2</sub> storage capacity estimation: issues and development of standards, *Int. J. Greenh. Gas. Con.* **1**, 62–68.
- Cao M., Gu Y. (2013) Physicochemical characterization of produced oils and gases in immiscible and miscible CO<sub>2</sub> flooding processes, *Energ. Fuel*. **27**, 1, 440–453.
- Christensen J.R., Stenby E.H., Skauge A. (2001) Review of WAG field experience, *SPE Reservoir Eval. Eng.* **4**, 97–106.
- DOE (2010). *An assessment of gate-to-gate environmental life cycle performance of water-alternating-gas CO<sub>2</sub>-enhanced oil recovery in the Permian Basin*, National Energy Technology Laboratory, DOE/NETL-2010/1433, 30, September.
- Jahangiri H.R., Zhang D. (2010) Optimization of carbon dioxide sequestration and enhanced oil recovery in oil reservoir, *SPE Western Regional Meeting*, 27–29 August, Anaheim, California, USA.
- Kamali F., Cinar Y. (2014) Co-optimizing enhanced oil recovery and CO<sub>2</sub> storage by imultaneous water and CO<sub>2</sub> injection, *Energ. Explor. Exploit.* **32**, 2, 281–300.
- Kovscek A.R., Cakici M.D. (2005) Geologic storage of carbon dioxide and enhanced oil recovery. II. Cooptimization of storage and recovery, *Energy Convers. Manage.* **46**, 1941–1956.
- Liang Z., Li X., Ren B., Cui G.D., Zhang Y., Ren S.R., Chen G.L., Zhang H. (2016) CO<sub>2</sub> storage potential and trapping mechanisms in the H-59 block of Jilin oilfield China, *Int. J. Greenh. Gas. Con.* **49**, 267–280.
- Liu P.C., Zhang X., Hao M.Q., Liu J.Q., Yuan Z. (2016) Parameter optimization of gas alternative water for CO<sub>2</sub> flooding in low permeability hydrocarbon reservoirs, *J. Renewable Sustainable Energy*. **8**, 3, 1–12.
- Lv G.Z., Li Q., Wang S.J., Li X.Y. (2015) Key techniques of reservoir engineering and injection-production process for CO<sub>2</sub> flooding in China's SINOPEC Shengli Oilfield, *J. CO<sub>2</sub> Utilization* **11**, 31–40.
- Ma J.H., Wang X.Z., Gao R.M., Zeng F.H., Huang C.X., Tontiwachwuthikul P., Liang Z.W. (2015) Enhanced light oil recovery from tight formations through CO<sub>2</sub> huff “n” puff processes, *Fuel* **154**, 35–44.
- Murray M.D., Frailey S.M., Lawal A.S. (2001) New approach to CO<sub>2</sub> flood: soak alternating gas, *SPE Permian Basin Oil and Gas Recovery Conference*, 15–17 May, Midland, Texas.
- Rahimi V., Bidarigh M., Bahrami P. (2017) Experimental study and performance investigation of miscible water-alternating-CO<sub>2</sub> flooding for enhancing oil recovery in the Sarvak formation, *Oil Gas Sci. Technol. - Rev. IFP Energies nouvelles* **72**, 35.
- Shen P.P., Liao X.W., Liu Q.J. (2009) Methodology for estimation of CO<sub>2</sub> storage capacity in reservoirs, *Petrol. Explor. Dev.* **36**, 2, 216–220.
- Song C.Y., Yang D.Y. (2017) Experimental and numerical evaluation of CO<sub>2</sub> huff-n-puff processes in Bakken formation, *Fuel*. **190**, 145–162.
- Sun L.L., Dou H.E., Li Z.P., Hu Y.L., Hao X.N. (2017) Assessment of CO<sub>2</sub> storage potential and carbon capture utilization and storage prospect in China, *J. Energy Institute* 1–8.
- Torabi F., Asghari K. (2010) Effect of connate water saturation oil viscosity and matrix permeability on rate of gravity drainage during immiscible and miscible displacement tests in matrix-fracture experimental model, *J. Can. Petrol. Technol.* **49**, 61–68.
- Wang Z., Ma J., Gao R., Zeng F., Huang C., Tontiwachwuthikul P., Liang Z. (2013) Optimizing cyclic CO<sub>2</sub> injection for low-permeability oil reservoirs through experimental study, *SPE Unconventional Resources Conference*, 5–7 November, Calgary, Alberta, Canada.
- Wolcott J., Schenewerk P., Berzins T., Karim F. (1995) A parametric investigation of the cyclic CO<sub>2</sub> injection process, *J. Petrol. Sci. Eng.* **141**, 35–44.
- Xu X.G., Saeedi A. (2017) Evaluation and Optimization Study on a Hybrid EOR Technique Named as Chemical-Alternating-Foam Floods, *Oil Gas Sci. Technol. - Rev. IFP Energies nouvelles* **72**, 1.
- Yu W., Lashgari H.R., Wu K., Sepehrnoori K. (2015) CO<sub>2</sub> injection for enhanced oil recovery in Bakken tight oil reservoirs, *Fuel* **159**, 354–363.