



**HAL**  
open science

**Erratum: Viet Nguyen, L., Tateishi, R., Kondoh, A.,  
Sharma, R.C., Thanh Nguyen, H., Trong To, T. and Ho  
Tong Minh, D. (2016). Mapping Tropical Forest  
Biomass by Combining ALOS-2, Landsat 8, and Field  
Plots Data. Land, 5(4), 31**

L. Viet Nguyen, R. Tateishi, A. Kondoh, R.C. Sharma, H. Thanh Nguyen, T.  
Trong To, Dinh Ho Tong Minh

► **To cite this version:**

L. Viet Nguyen, R. Tateishi, A. Kondoh, R.C. Sharma, H. Thanh Nguyen, et al.. Erratum: Viet Nguyen, L., Tateishi, R., Kondoh, A., Sharma, R.C., Thanh Nguyen, H., Trong To, T. and Ho Tong Minh, D. (2016). Mapping Tropical Forest Biomass by Combining ALOS-2, Landsat 8, and Field Plots Data. Land, 5(4), 31. Land, 2017, 6 (3), pp.47. 10.3390/land6030047 . hal-01895362

**HAL Id: hal-01895362**

**<https://hal.science/hal-01895362>**

Submitted on 15 Oct 2018

**HAL** is a multi-disciplinary open access archive for the deposit and dissemination of scientific research documents, whether they are published or not. The documents may come from teaching and research institutions in France or abroad, or from public or private research centers.

L'archive ouverte pluridisciplinaire **HAL**, est destinée au dépôt et à la diffusion de documents scientifiques de niveau recherche, publiés ou non, émanant des établissements d'enseignement et de recherche français ou étrangers, des laboratoires publics ou privés.

Erratum

**Erratum: Viet Nguyen, L., Tateishi, R., Kondoh, A., Sharma, R.C., Thanh Nguyen, H., Trong To, T. and Ho Tong Minh, D. (2016). Mapping Tropical Forest Biomass by Combining ALOS-2, Landsat 8, and Field Plots Data. *Land*, 5(4), 31.**

**Luong Viet Nguyen**<sup>1,2,\*</sup>, **Ryutaro Tateishi**<sup>1</sup>, **Akihiko Kondoh**<sup>1</sup>, **Ram C. Sharma**<sup>1</sup> ,  
**Hoan Thanh Nguyen**<sup>3</sup>, **Tu Trong To**<sup>2</sup> and **Dinh Ho Tong Minh**<sup>4</sup>

<sup>1</sup> Center for Environmental Remote Sensing, Chiba University, 1–33 Yayoi-cho, Inage-ku, Chiba 263-8522, Japan; [tateishi@faculty.chiba-u.jp](mailto:tateishi@faculty.chiba-u.jp) (R.T.); [kondoh@faculty.chiba-u.jp](mailto:kondoh@faculty.chiba-u.jp) (A.K.); [sharma-rmc@chiba-u.jp](mailto:sharma-rmc@chiba-u.jp) (R.C.S.)

<sup>2</sup> Space Technology Institute, Vietnam Academy of Science and Technology, 18 Hoang Quoc Viet str., Cau Giay dist., Hanoi 100000, Vietnam; [tttu@sti.vast.vn](mailto:tttu@sti.vast.vn)

<sup>3</sup> Institute of Geography, Vietnam Academy of Science and Technology, 18 Hoang Quoc Viet str., Cau Giay dist., Hanoi 100000, Vietnam; [hoan\\_ig@yahoo.com](mailto:hoan_ig@yahoo.com)

<sup>4</sup> Institut national de Recherche en Sciences et Technologies pour l'Environnement et l'Agriculture (IRSTEA), UMR TETIS, Maison de la Teledetection, 500 Rue Jean Francois Breton, 34000 Montpellier, France; [Dinh.Ho-Tong-Minh@Irstea.fr](mailto:Dinh.Ho-Tong-Minh@Irstea.fr)

\* Correspondence: [nvluong@sti.vast.vn](mailto:nvluong@sti.vast.vn); Tel.: +84-437-562-985

Academic Editor: Chuanrong Zhang

Received: 2 August 2016; Accepted: 21 September 2016; Published: 13 July 2017

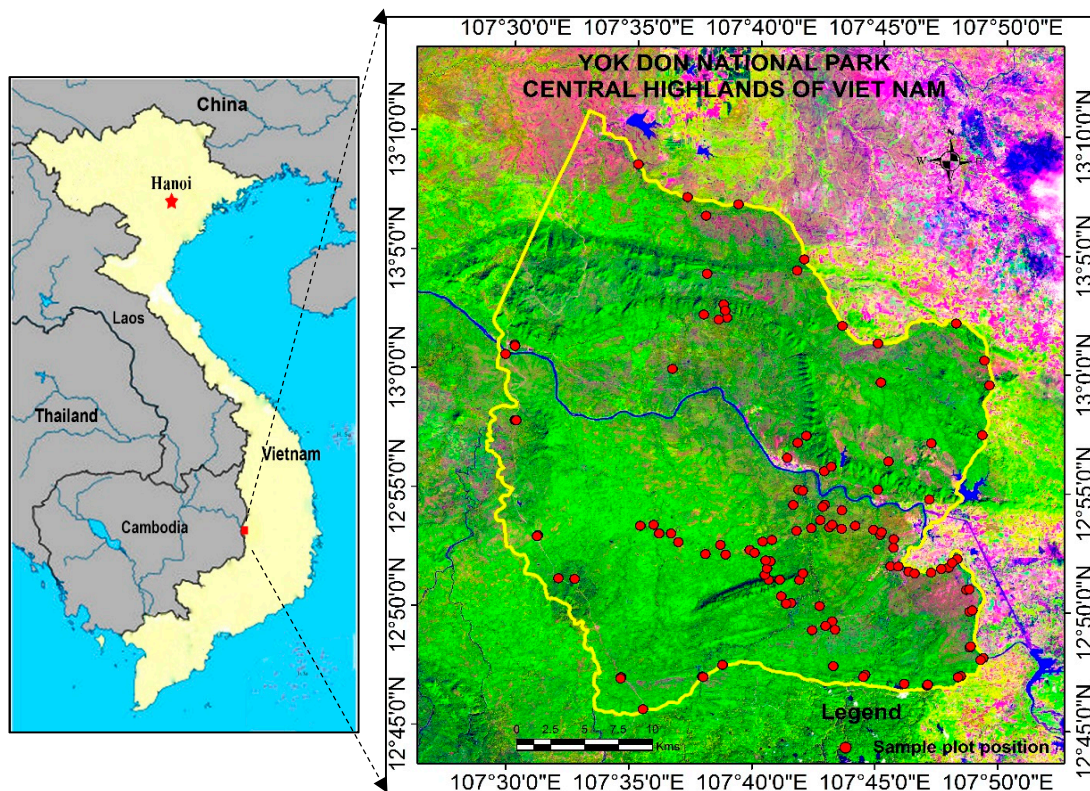
---

The authors would like to correct the following errors in Figure 1 in [1]:

In the original publication data source is wrong in “**Figure 1**. Location map of the study area with sample plot positions. The RGB color composite (right figure) is based on ALOS-2 SAR data, and the boundary of Yok Don National Park is shown in the yellow polygon”.

**Corrected version of Figure 1’s caption:**

**Figure 1.** Location map of the study area with sample plot positions. The RGB color composite (right figure) is based on Landsat 8 OLI data, and the boundary of Yok Don National Park is shown in the yellow polygon.



**Figure 1.** Location map of the study area with sample plot positions. The RGB color composite (right figure) is based on Landsat 8 OLI data, and the boundary of Yok Don National Park is shown in the yellow polygon.

The authors would like to add/correct the following in the Acknowledgments [1]:

**Before: Acknowledgments:** The authors are grateful to the Vietnam Academy of Science and Technology (VAST) and the Japan Society for the Promotion of Science (JSPS) for financial support of this research. We would like to thank JAXA for providing ALOS-2 SAR data for this study in the framework of ALOS Research program, PI No. 1172.

**Corrected version:**

**Acknowledgments:** The authors are grateful to project No. VAST01. 03/15-16 from the Vietnam Academy of Science and Technology (VAST) and the Japan Society for the Promotion of Science (JSPS) for financial support of this research. We would like to thank JAXA for providing ALOS-2 SAR data for this study in the framework of ALOS Research program, PI No. 1172.

We apologise for any inconvenience this might have caused to the readers. The manuscript will be updated and the original will remain online on the article webpage.

**Reference**

1. Viet Nguyen, L.; Tateishi, R.; Kondoh, A.; Sharma, R.C.; Thanh Nguyen, H.; Trong To, T.; Ho Tong Minh, D. Mapping Tropical Forest Biomass by Combining ALOS-2, Landsat 8, and Field Plots Data. *Land* **2016**, *5*, 31. [CrossRef]

