



**HAL**  
open science

# Spatio-temporal changes in glacier-wide mass balance quantified by optical remote sensing on 30 glaciers in the French Alps for the period 1983–2014

Antoine Rabatel, Jean-Pierre Dedieu, Christian Vincent

## ► To cite this version:

Antoine Rabatel, Jean-Pierre Dedieu, Christian Vincent. Spatio-temporal changes in glacier-wide mass balance quantified by optical remote sensing on 30 glaciers in the French Alps for the period 1983–2014. *Journal of Glaciology*, 2016, 62 (236), pp.1153-1166. 10.1017/jog.2016.113 . hal-01894324

**HAL Id: hal-01894324**

**<https://hal.science/hal-01894324>**

Submitted on 12 Oct 2018

**HAL** is a multi-disciplinary open access archive for the deposit and dissemination of scientific research documents, whether they are published or not. The documents may come from teaching and research institutions in France or abroad, or from public or private research centers.

L'archive ouverte pluridisciplinaire **HAL**, est destinée au dépôt et à la diffusion de documents scientifiques de niveau recherche, publiés ou non, émanant des établissements d'enseignement et de recherche français ou étrangers, des laboratoires publics ou privés.

# Spatio-temporal changes in glacier-wide mass balance quantified by optical remote sensing on 30 glaciers in the French Alps for the period 1983–2014

ANTOINE RABATEL,<sup>1</sup> JEAN PIERRE DEDIEU,<sup>2</sup> CHRISTIAN VINCENT<sup>1</sup>

<sup>1</sup>University of Grenoble Alpes, CNRS, Laboratoire de Glaciologie et Géophysique de l'Environnement (LGGE), F-38000 Grenoble, France

<sup>2</sup>University of Grenoble Alpes, CNRS, IRD, Laboratoire d'étude des Transferts en Hydrologie et Environnement (LTHE), F-38000 Grenoble, France

Correspondence: Antoine Rabatel <[antoine.rabatel@univ-grenoble-alpes.fr](mailto:antoine.rabatel@univ-grenoble-alpes.fr)>

**ABSTRACT.** Remote sensing is a powerful method to reconstruct annual mass-balance series over past decades by exploiting archives of available images, as well as to study glaciers in inaccessible regions. We present the application of a methodological framework based only on optical satellite images to retrieve glacier-wide annual mass balances for 30 glaciers in the French Alps. The glacier-wide annual mass balance for the period 1983–2014 was reconstructed by combining changes in glacier volumes computed from remote-sensing derived DEMs with annual measurements of the snow line altitude on satellite images. Data from direct observations on two of the glaciers confirmed the accuracy of the annual mass balances quantified by remote sensing with an average difference of  $\sim 0.3$  m w.e., within the uncertainty range of the methods. Our results confirm the significant increase in mass loss since the early 2000s, with a difference  $> 1$  m w.e.  $a^{-1}$  between the periods 1983–2002 and 2003–14. The region-wide mass balance for the French Alps over the period 1979–2011 was  $-0.66 \pm 0.27$  m w.e.  $a^{-1}$ , close to that of the European Alps. We also show that changes in glacier surface area or length are not representative of changes in mass balance at the scale of a few decades.

**KEYWORDS:** annual surface mass balance, mountain glaciers, satellite remote sensing, snow line

## 1. INTRODUCTION

Studying glacier surface processes at fine scales in space and over time involves direct field monitoring but enables understanding of the interactions between glaciers and their environment (Vaughan and others, 2013). A small number of glaciers are permanently monitored in different climate regions worldwide, allowing the quantification of their mass balance using glaciological, hydrological, or geodetic methods and, in some cases, of their surface energy balance (usually at point scale using weather stations). Regarding the mass balance, the World Glacier Monitoring Service (WGMS, 2013; Zemp and others, 2015) lists data available on 440 glaciers monitored worldwide through field measurements, which include uninterrupted series covering more than 40 a for only 37 glaciers. The 440 monitored glaciers represent only 0.25% of the nearly 200 000 glaciers inventoried worldwide and included in the Randolph Glacier Inventory and GLIMS databases (Pfeffer and others, 2014 and [www.glims.org](http://www.glims.org)). The small number of available datasets is due to the financial and human investment, and the time required for field measurements.

Although few in number, field studies on the monitored glaciers have made it possible to highlight the key climate variables controlling the glacier mass-balance processes and the links with regional or global patterns of atmospheric circulation (e.g. Vincent, 2002; Vincent and others, 2004; Huss and Bauder, 2009; Thibert and others, 2013; Rabatel and others, 2013a). They have also helped to better characterize the variables and processes that affect ice dynamics including ice thickness, flow velocities at the surface and

thermal diffusion (e.g. Berthier and Vincent, 2012; Gilbert and others, 2012). Long-term monitoring of mass balance is indispensable to improve our knowledge of the processes and clear up the remaining questions on many points, such as the role of wind and topography in snow accumulation at the glacier surface (e.g. Sold and others, 2013), the role of turbulent fluxes in snow and ice ablation (e.g. Litt and others, 2015), the impact of aerosols and black carbon on albedo (e.g. Ginot and others, 2014), or the role of water in basal sliding (e.g. Helmstetter and others, 2015). Similarly, these measurements are needed for the calibration and validation of models (e.g. Gabbi and others, 2014; Réveillet and others, 2015).

Unfortunately, the small number of available series limits our understanding of the relationship between climate and glacier changes at regional scales, as well as our understanding of the contribution of glaciers to water resources (e.g. Cauvy-Fraunié and others, 2013; Soruco and others, 2015) and to the biodiversity of high-altitude watersheds (e.g. Carlson and others, 2014).

As a consequence, a different monitoring approach is needed to quantify glacier-wide mass balance and regional scale changes, in addition to field measurements. Remote sensing has proven to be a very useful tool for this purpose. The increase in the number of satellite sensors over nearly four decades, as well as their improved performance, i.e. their improved spatial, radiometric and temporal resolutions, has made remote sensing indispensable for the monitoring of glaciers, and many methods have been developed since the 1970s (e.g. Rees, 2006). Computing glacier decadal volume

variations at the regional scale from the differences in digital elevation data computed from satellite observations has become quite common (e.g. Berthier and others, 2006, 2014; Gardelle and others, 2013; Gardner and others, 2013), but retrieving glacier-wide mass balance is more challenging. However, it is a key issue, highlighted by the international strategy for glacier monitoring defined by the Global Terrestrial Network for Glaciers (GTN-G, gtn-g.org). Two methods have recently emerged: one based on the measurement of the end-of-summer snow line as a proxy of the equilibrium-line altitude (ELA) (Rabatel and others, 2005, 2012a, hereafter referred to as the *SLA method*), the other based on the minimum average albedo of the glacier surface (Dumont and others, 2012; Brun and others, 2015).

Here, we use data from previous studies conducted in the French Alps (Rabatel and others, 2005, 2013b), to reconstruct ELA time series for 30 glaciers over the 1983–2014 period, using the end-of-summer snow line detected on satellite images. The aims of this study were to (1) apply the *SLA method* on 30 French alpine glaciers over a 31 year period, (2) test the accuracy of the *SLA method* applied to a long period by comparing our results with the few available field glacier-wide mass-balance series, and (3) characterize changes in the end-of-summer SLA and glacier-wide mass balance in the French Alps over the last three decades compared with changes in other regions in the European Alps.

## 2. STUDY AREA

A recent update of the glacier inventory of the French Alps listed 593 glaciers (Rabatel and others, 2012b; Gardent and others, 2014). The total glacial coverage in the French Alps was  $\sim 340 \text{ km}^2$  in the mid-1980s and had decreased to  $\sim 275 \text{ km}^2$  by the late 2000s. In the present study, we used 30 glaciers located in the French Alps (Table 1, Fig. 1) selected using the following criteria: (1) glaciers had to have a high enough maximum elevation to allow observation of the snow line every year during the study period; (2) all

aspects of the glaciers had to be represented; and (3) glaciers located in all the glacierized mountain ranges in the French Alps from the southernmost ( $44^\circ 50' \text{ N}$ ) to the northernmost ( $46^\circ 00' \text{ N}$ ) had to be included.

Three of the glaciers selected belong to the GLACIOCLIM observatory, which runs a permanent mass-balance monitoring program: Glacier de Saint-Sorlin, monitored since 1957 (# 19 in Table 1 and Fig. 1), Glacier d'Argentière, monitored since 1975 (# 2 in Table 1 and Fig. 1), and Glacier de Gébroulaz monitored since 1983 (# 16 in Table 1 and Fig. 1). Available data on the glacier-wide mass balance and topography of these three glaciers were used to assess the representativeness of the glacier-wide mass balance computed from the satellite images. It should be noted that the glacier-wide mass balances of these three glaciers were computed using the glaciological method and adjusted with the geodetic method (e.g. Vincent, 2002; Vincent and others, 2009). It should also be noted that the DEMs used to compute the geodetic balance in the case of GLACIOCLIM are not the ones used in the current study. Indeed, the DEMs used for GLACIOCLIM glaciers come from photogrammetric restitutions of aerial photographs only taken on GLACIOCLIM glaciers.

## 3. METHODS AND DATA

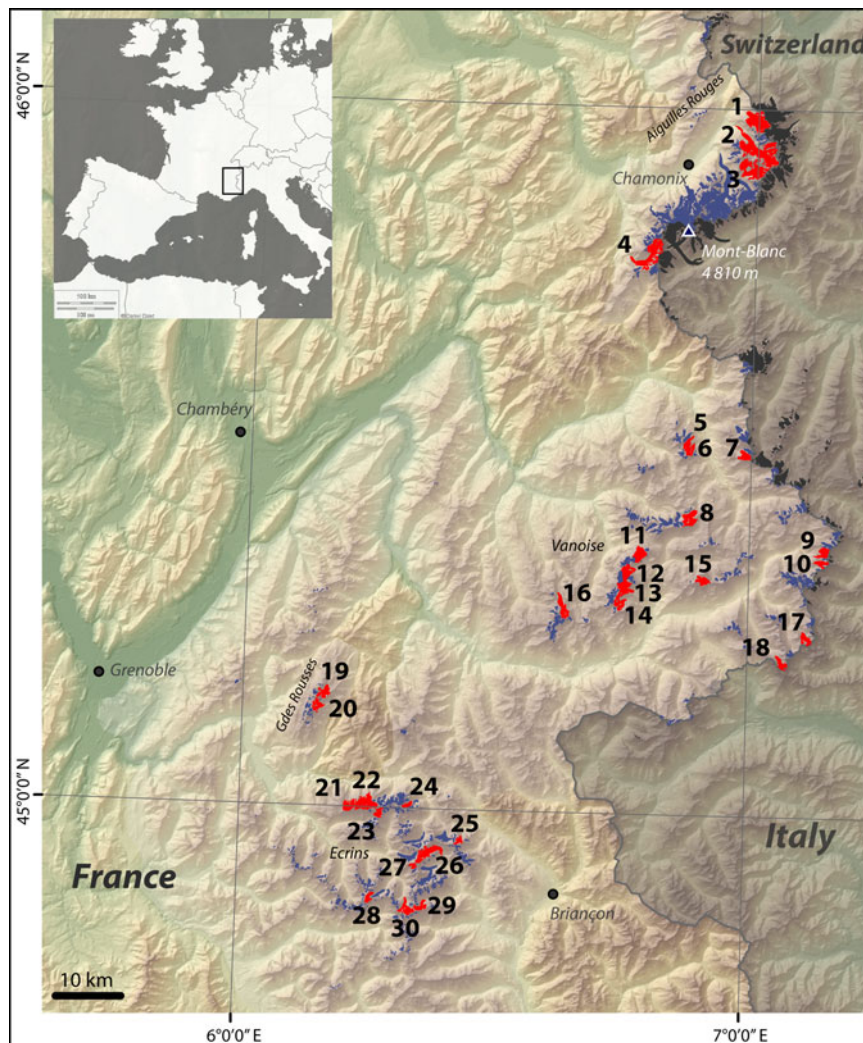
### 3.1. Reconstructing the glacier-wide mass balance from optical remote-sensing data

For temperate (outer tropical) glaciers, the end-of-summer (dry season) snow line is an accurate proxy of the equilibrium line (Lliboutry, 1965; Braithwaite, 1984; Rabatel and others, 2005, 2008, 2012a). Moreover, the snow line is easy to discern on optical remote-sensing images. After geometrical and radiometric corrections of the remote-sensing images, the altitude of the end-of-summer snow line (hereafter referred to as *SLA*, in m) was calculated for each year of the study period (written *SLA<sub>i</sub>*, in m) using DEMs. The glacier-wide mass-balance series can then be reconstructed in two steps. First, for each year, we calculated the difference between

**Table 1.** List of the glaciers studied. Numbers refer to Fig. 1; glaciers are ordered from North to South to facilitate their identification on the map

#	Name of glacier	Mean MB 1983–2014 m w.e. a <sup>-1</sup>	Surface area km <sup>2</sup>	Surface area loss %	#	Name of glacier	Mean MB 1983–2014 m w.e. a <sup>-1</sup>	Surface area km <sup>2</sup>	Surface area loss %
1	Tour	-0.73	8.49	-12	16	Gébroulaz	-0.70	3.69	-12
2	Argentière	-0.84	14.59	-4	17	Baounet	-1.26	2.58	-24
3	Talèfre	-0.97	7.98	-4	18	Rochemelon	-1.13	2.24	-16
4	Tré la Tête	-1.05	8.87	-6	19	Saint-Sorlin	-1.04	3.08	-21
5	Savinaz	-0.76	1.05	-13	20	Quirilies	-1.03	2.74	-25
6	Gurraz	-0.72	1.72	-9	21	Mont de Lans	-0.53	3.02	-25
7	Sassière	-0.85	2.22	-6	22	Girose	-0.59	5.99	-15
8	Grande Motte	-0.98	4.70	-18	23	Selle	-0.76	2.19	-18
9	Mulinet	-0.80	2.93	-21	24	Lautaret	-0.86	1.67	-18
10	Grand Méan	-0.91	2.39	-27	25	Casset	-0.94	1.22	-21
11	Arcelin	-0.81	3.64	-8	26	Blanc	-0.89	5.68	-15
12	Pelve	-0.94	3.85	-16	27	Vallon Pilatte	-0.90	1.32	-25
13	Arpont	-0.86	4.24	-15	28	Rouies	-0.61	1.46	-11
14	Mahure	-0.85	3.07	-15	29	Sélé	-1.09	2.08	-18
15	Vallonnet	-0.71	2.45	-14	30	Pilatte	-1.08	3.06	-14

Mean MB = mean glacier-wide mass balance (in m w.e. a<sup>-1</sup>) for the period 1983–2014; the overall uncertainty in the mean MB was estimated to  $\pm 0.3 \text{ m w.e.}$  Surface refers to the beginning of the period (i.e. 1985/86), and the surface loss was computed over the entire study period.



**Fig. 1.** The 30 glaciers (in red) whose annual mass-balance time series were reconstructed among the 593 glaciers in the French alpine glacier inventory (in blue). Glaciers on the Italian and Swiss sides of the Franco-Italian and Franco-Swiss borders are in dark gray (adapted from Gardent and others, 2014).

$SLA_i$  and  $ELA_{eq}$ , where  $ELA_{eq}$  is the theoretical altitude of the equilibrium line if the glacier had a balanced budget (glacier-wide mass balance = 0) for the study period.  $ELA_{eq}$  is computed as:

$$ELA_{eq} = \frac{1}{n} \sum_1^n (SLA_i) + \frac{\bar{B}}{\partial b / \partial z}, \quad (1)$$

where  $\bar{B}$  is the mean glacier-wide mass balance over the study period (in m w.e.  $a^{-1}$ ) quantified by the different DEMs (see below), and  $\partial b / \partial z$  is the mass-balance gradient in the vicinity of the ELA, fixed at  $0.78 \text{ m w.e. } 100 \text{ m}^{-1}$  for the Alps according to Rabatel and others (2005). Rabatel and others (2005) demonstrated that even if  $\partial b / \partial z$  for a specific glacier differs slightly from this value, using an average value on a regional scale does not depreciate the results.

The glacier-wide mass balance,  $B_a$ , computed for each year, of the study period can then be expressed as:

$$B_a = (ELA_{eq} - SLA_i) \times \frac{\partial b}{\partial z}. \quad (2)$$

To apply the method, the following are needed:

- Two DEMs covering the entire region of interest (ROI); one at (or close to) the beginning of the study period, one at (or close to) the end.
- One satellite image for each glacier under study and for each year of the study period. In temperate latitudes, the image must have been acquired at the end of the summer season, and in the outer tropics, during the dry season.
- The value of the mass-balance gradient in the vicinity of the ELA.

It is worth mentioning that our method assumes that the glacier-wide mass balance is similar to the surface mass balance obtained in the vicinity of the  $ELA_{eq}$ . This assumption is reasonable because the mass balances obtain with our method are normalized by the glacier-wide mass balance of the entire study period, using satellite DEM differencing.

### 3.2. Satellite images and DEMs

A total of 131 images were used to cover the 30 glaciers for the 31-a study period (see Appendix). The images were acquired by the following sensors: Landsat 4TM, 5TM,



7ETM+, 8OLI, SPOT 1–5 and ASTER, with spatial resolutions ranging from 2.5 to 30 m.

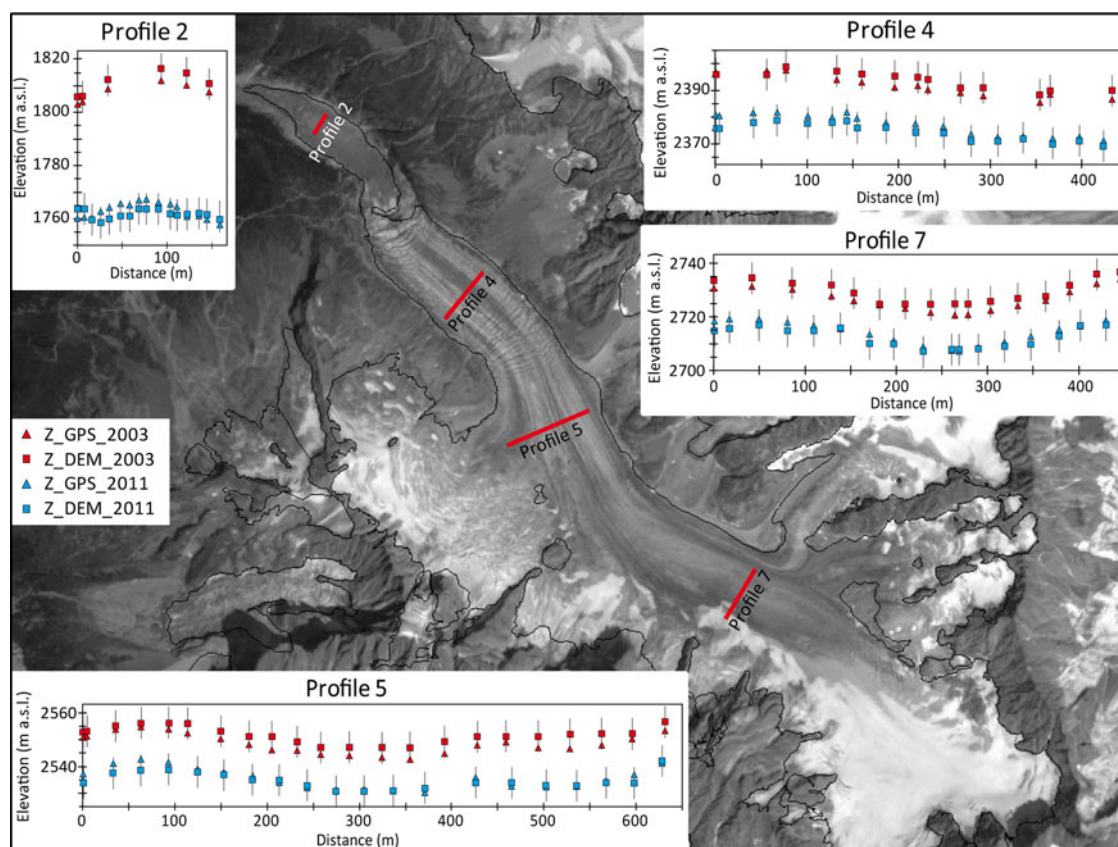
Snow can fall during the ablation season, potentially more frequently at the ELA during late summer. However, these snowfalls are easy to identify when looking at the terrain surrounding the glacier and the image is consequently not used. Several images were available between August and September in most years (specifically in the last 15 a, thanks to the increasing number of sensors), making it possible to check changes in the snow line on the different images. As a consequence, we are confident that, as a proxy, the SLA is representative of the ELA of the glaciers where it could not be compared with the ELA retrieved from in-situ monitoring (i.e. Argentière, Saint-Sorlin and Gébroulaz glaciers).

In total 85% of the images were recorded between late August and early October, i.e. close to the end of the hydrological year, which is 30 September in the Alps. Concerning SLA measurements, 13% of the SLA were measured on images acquired before 15 August (the earliest image was taken on 30 July). This was particularly true in the first part of the period, before the mid-1990s, when fewer images were available. In those cases, the SLA values we used may be lower than if they had been measured later in the ablation season. It is possible to roughly estimate the increase in the SLA between the date the image was acquired and the end of the ablation season using a degree-day approach. However, this kind of approach also implies uncertainty related to the model parameters (degree-day factors, temperature gradient and threshold), which need to be calibrated using field measurements, and these are not necessarily available. In addition, snow falls frequently at the elevation of the SLA in the late summer season, which significantly affects the ablation rates and which would also need to be taken into account. Finally, one advantage of the method is that it can be used for glaciers for which no glaciological or meteorological data are available. For these reasons, we preferred to use the SLA data available from the image with no adjustment, and to evaluate the performance of the method even if, in a few cases, the images did not strictly match the end of the ablation season.

Three DEMs were used in this study. The first one is a photogrammetric DEM from the French National Geographic Institute (*Institut Géographique National*, French acronym IGN) with a horizontal resolution of 25 m. This DEM, named '1979', covers the entire RoI and was extracted from aerial photographs taken close to the year 1979. In practice, photographs were not available for the whole area in 1979, so the IGN used photographs taken between 1975 and 1985, meaning the date of the aerial photos used differs from one massif to the other. Aerial photos of the Massif du Mont-Blanc were taken in 1979 (Berthier and others, 2006; Berthier and Vincent, 2012) but for the other massifs, this information is no longer available. The comparison of the glacier surface elevation on the DEM with available topographical measurements of Glacier d'Argentière in 1979 (on the same profiles presented in Fig. 2 but with fewer points than in recent years, i.e. 25 points in total, reason why the 1979 data are not plotted) showed an average difference of 1.3 m (4 m in absolute values), confirming the date of the aerial photos used. For Glacier de Saint-Sorlin, in the Massif des Grandes Rousses, the difference reached 14 m (both the raw difference and the difference in absolute values) and the glacier surface

elevation on the DEM was systematically lower than the one identified from the topographical measurements. Because glaciers in the French Alps were thickening at this period (Vincent and others, 2000, 2009), it is most likely that aerial photographs from a previous aerial survey (possibly the one made in 1975) were used in this area. The topographic measurements made on Glacier de Saint-Sorlin between 1975 and 1980 showed a thickening of 10–15 m of all the profiles surveyed (Vincent and others, 2000), in agreement with our hypothesis. To estimate the uncertainties related to the exact dates of the aerial photos used to construct the DEM, which is important to compute the uncertainty in the glacier mass loss over our study period, we considered the glacier-wide mass balance data available for the period 1975–85 on the Sarennes, Saint-Sorlin and Argentière glaciers. For these three glaciers, the 10-a average annual mass balance was close to equilibrium: respectively,  $-0.14$ ,  $0.16$  and  $0.12$  m w.e.  $a^{-1}$  and consequently exact dating would not introduce strong uncertainty. The cumulative mass balances over this 10-a period revealed a maximum amplitude (i.e. the difference between the highest and lowest values) of 2.07, 3.53 and 2.54 m w.e. for Sarennes, Saint-Sorlin and Argentière glaciers, respectively, which corresponds to an average uncertainty of  $\pm 0.10$  m w.e.  $a^{-1}$  in the 30-a mean glacier-wide mass balance computed by the difference between this DEM and the other from 2011.

The two other DEMs (20 m resolution) were derived from SPOT5 2.5 m stereo-pairs acquired on 8 August 2003 and 15 October 2011. The DEM from 2003 only covers the Massif du Mont-Blanc; the one from 2011 covers the entire RoI. For the two satellite-derived DEMs, comparison with the elevation profiles surveyed in the field each year with DGPS measurements made by the GLACIOCLIM observatory showed that the changes in the DEM-derived elevations were accurate to within 1–3 m in the ablation area (Fig. 2). In 2003, the DGPS measurements were conducted on 10 September i.e. 1 month after the images were acquired. In 2003, the DEM (red squares in Fig. 2) is always above the DGPS (red triangles). This is consistent with the lowering of the glacier surface due to ablation during the month separating image acquisition and the DGPS survey. A simple estimate of ablation during this month using a degree-day model and considering an ablation rate of 6.6 mm of ice per degree and per day (Vincent, 2002) and average daily temperature values at Chamonix gave an ablation of  $\sim 1.2$  m of ice at the elevation of profile 2 (less high up on the glacier). As a consequence, at least half the difference in elevation between the DEM and the DGPS can be attributed to the difference in dates. In 2011, the situation was reversed; the DGPS survey was conducted on 15 September i.e. 1 month before the image acquisition. Logically, the DEM (blue squares in Fig. 2) is below the DGPS (blue triangles). However, the difference in elevation between the DEM and the DGPS was less in 2011 because in September, ablation is much more limited than earlier in the ablation season. Regarding the effect of dynamics on the surface elevation changes, Vincent and others (2009) showed that changes in thickness are mainly driven by changes in surface mass balance in the upper part of Glacier d'Argentière. The dynamic effect on elevation changes is close to zero in the upper part of the glacier at profiles 4, 5 and 7. At profile 2, the influence of longitudinal strain rate on the change in elevation was  $\sim 4.3$  m  $a^{-1}$  in 2003, i.e.  $0.36$  m  $month^{-1}$ . Given



**Fig. 2.** Comparison between field DGPS measurements (triangles) and elevations (squares) derived from SPOT5 DEMs for 2003 (in red) and 2011 (in blue) for four cross sections of Glacier d'Argentière. The 2.5 m pixel resolution SPOT5 image in the background was acquired on 15 October 2011.

that the ice flow velocities and longitudinal strain rate have decreased in this part of the glacier since 2003 (Vincent, unpublished data), this influence should be less in 2011.

Finally, the uncertainty in the elevation of each pixel related to the geo-referencing and co-registration of the available DEMs was estimated at 2.5 m from the non-glacierized part of the study area (see the inner graph in Fig. 4).

### 3.2.1. End-of-summer snow line altitude time series

The snow line was delineated manually on multispectral images using a combination of the green, near-infrared and short-wave infrared bands, which has been shown to be the most appropriate combination to identify the limit between snow and ice (Rabatel and others, 2012a, and Fig. 4 therein). The snow line was delineated on the central part of the glaciers to avoid border effects on the glacier margins: shadows from surrounding slopes, additional snow input by avalanches, over-accumulation due to wind, which mean the position of the equilibrium line could depend on local conditions. The average altitude of the snow line was calculated by overlaying the shapefiles containing the delineated snow lines for each year and each glacier on the DEMs. The IGN DEM was used for the first part of the period (up to the late 1990s) and the other ones for the rest of the period. Changing from one DEM to the other in the late 1990s had no impact on altitude of the snow line measured on the images because at that time, the end-of-summer SLA was located between 3000 and 3200 m a.s.l., an altitudinal range for which the difference

in elevation between the DEMs is lower than their vertical accuracies (Rabatel and others, 2013b).

### 3.2.2. Changes in glacier volume computed from the difference between DEMs

Quantifying changes in glacier volume at decadal timescale from the difference between elevation data of the glacier surface, the so-called geodetic method, is widely used. The elevation data come from either direct topographic measurements (using DGPS or LiDAR), topographical maps, aerial photographs or satellite data from optical, RADAR or laser sensors (e.g. Berthier and others, 2006; Rabatel and others, 2006, 2008; Thibert and others, 2008; Gardelle and others, 2013; Gardner and others, 2013). The subtraction of two DEMs gives the total volumetric variation of the glacier. The mean glacier-wide mass balance,  $\bar{B}$ , over the period defined by the date of the two DEMs is calculated by dividing the total volumetric variation between the two dates by the product of the mean surface area of the glacier and the number of years, assuming a constant ice density of  $900 \text{ kg m}^{-3}$ . Using such a density value assumes no change in firn volume and density occurs over time. However, over the study period, we moved from a period with mass gain to a period of strong mass loss and this assumption may introduce an uncertainty. As recommended by Huss (2013), we also applied an ice density value of  $850 \text{ kg m}^{-3}$ . This change in ice density value leads to a difference of  $0.04 \text{ m w.e. a}^{-1}$  in the geodetic balance (average of the 30 glaciers studied) over the entire time period. This difference is included in the uncertainty assessment (see Section 4.1.1).

## 4. RESULTS AND DISCUSSION

We first quantify the overall uncertainty in the annual glacier-wide mass balance computed using remote sensing. Then we present and discuss the changes in end-of-summer SLA in space and over time, the mean glacier-wide mass balance over the study period and finally the reconstructed annual mass balance time series. However, because changes in end-of-summer SLA and their relations with climate and morpho-topographic variables were the focus of a previous study (Rabatel and others, 2013b) here we only recall the main findings on this topic.

### 4.1. Overall uncertainty in the annual glacier-wide mass balance computed by remote sensing

The overall uncertainty in the annual glacier-wide mass-balance values,  $\Delta B_a$ , can be computed from the uncertainty in each of the variables in Eqns (1) and (2); i.e.  $\Delta SLA_i$ ,  $\Delta ELA_{eq}$ ,  $\Delta \bar{B}$ ,  $\Delta \partial b / \partial z$  and the uncertainty related to the temporal difference between the date of the used satellite image and the end of the hydrological year, called  $\Delta date$ . According to the error propagation method, it can be expressed as:

$$\Delta B_a = \sqrt{\left( \frac{\Delta \frac{1}{n} \sum SLA_i}{\frac{1}{n} \sum SLA_i} + \frac{\Delta \partial b / \partial z}{\partial b / \partial z} \right)^2 + \left( \frac{\Delta SLA_i}{SLA_i} + \frac{\Delta \partial b / \partial z}{\partial b / \partial z} \right)^2 + (\Delta \bar{B})^2 + (\Delta date)^2.} \quad (3)$$

- The uncertainty in  $SLA_i$  results from different sources related to the satellite images and DEM used (Rabatel and others, 2012a): (1) the pixel size of the images, which ranged from 2.5 to 30 m depending on the sensor; (2) the slope of the glacier in the vicinity of the  $SLA_i$ , which ranged from 7° to 32° depending on the glacier and the zone where the  $SLA_i$  was located in any given year; (3) the vertical accuracy of the DEM; and (4)

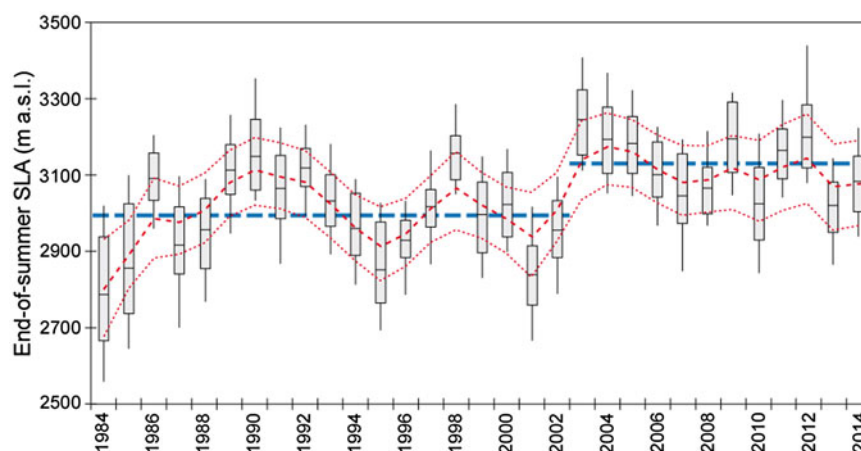
the standard deviation of the calculation of the average  $SLA_i$ , which ranged from 10 to 170 m depending on the glacier and on the year concerned. Using the method of error propagation, the overall uncertainty in the  $SLA_i$  ranged from  $\pm 15$  to  $\pm 170$  m depending on the glacier and on the year considered.

- Regarding the uncertainty in  $\partial b / \partial z$ , we considered a variability of  $\pm 10\%$  related to the year-to-year and glacier-to-glacier variability described in Rabatel and others (2005).
- The uncertainty in  $\bar{B}$  results from (1) the lack of information on the exact date of the first DEM (refer to Section 3.2); (2) the georeferencing and co-registration of the DEMs (refer to Section 3.2); (3) the density used to convert the differences in glacier surface elevation into mass changes (refer to Section 3.2.2); and (4) the correction applied to the geodetic mass balance related to the fact that our reconstructed mass-balance time series using the SLA starts in 1983 and the first DEM is older (see Section 4.4). Combining these different sources of error, the overall uncertainty in  $\bar{B}$  is  $\pm 0.12$  m w.e.  $a^{-1}$
- Regarding the uncertainty resulting from the fact that the images were not recorded the last day of the hydrological year, we estimated the melting between the date of the images and 30 September in the following way: (1) for each year and each glacier, we calculated the numbers of days between the date of the image and 30 September; (2) we computed the positive degree-day sum at the elevation of the SLA, and computed the resulting melt using a degree-day factor of  $6 \text{ mm } ^\circ\text{C}^{-1} \text{ d}^{-1}$  (Six and Vincent, 2014). Considering all the glaciers over the entire study period, the average uncertainty related to the date of the images were  $\pm 0.09$  m w.e.  $a^{-1}$  (ranging from 0 to  $\pm 0.33$  m w.e.  $a^{-1}$  as a maximum).

Finally,  $\Delta B_a$  [Eqn (3)], equals  $\pm 0.22$  m w.e.  $a^{-1}$  on average considering all the glaciers and all the years (ranging from  $\pm 0.19$  to  $\pm 0.40$  m w.e.  $a^{-1}$  depending on the year and glacier concerned).

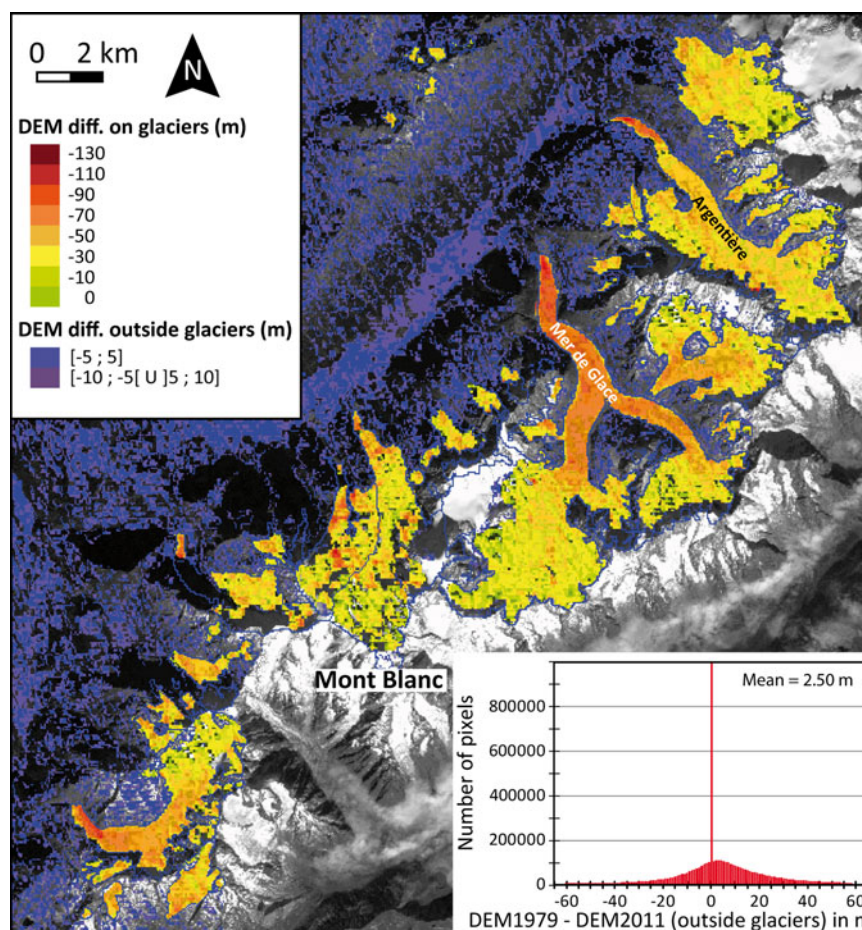
### 4.2. Spatio-temporal variability of the ELA

Figure 3 illustrates changes in the end-of-summer SLA over the period 1984–2014 for the glaciers under study.



**Fig. 3.** Changes in the end-of-summer SLA over the period 1984–2014 for the 43 glaciers described in Rabatel and others (2013b). The gray boxes represent the median interval (Q3–Q1), the horizontal black bar in each box represents the annual average of the sample, and the vertical black lines show the interval between the first and the last deciles (D1 and D9). The dashed red line represents the smooth underlying trend captured by a cubic smoothing spline regression and red dotted lines the corresponding 95% confidence interval. The horizontal blue dotted lines show the average end-of-summer SLA of all the glaciers over the periods 1984–2002 and 2003–14.





**Fig. 4.** Difference in elevation between the 2011 SPOT5 DEM and 1979 IGN DEM in the French part of the Massif du Mont-Blanc. The insets show the distribution of the difference in elevation for pixels located outside the glaciers.

Considering all the glaciers, the mean end-of-summer SLA for the whole period was located at  $3045 \pm 120$  m a.s.l. The increasing trend in end-of-summer SLA was  $6 \text{ m a}^{-1}$  over the whole study period (1984–2014) assuming a statistically significant linear trend with a <5% risk of error. Since 2003, the mean annual end-of-summer SLA has almost always been above the mean end-of-summer SLA for the whole period. Considering two subsets, i.e. before and after 2003, no significant trend appeared in either of the subsets. The second subset is shorter (12 a) than the first (19 a), and trends computed on short periods should be interpreted with caution. However, the mean end-of-summer SLA between the two subsets increased by  $\sim 137$  m. A Wilcoxon–Mann–Whitney test (Mann and Whitney, 1947) showed that the year 2003 can be considered as a breakpoint in the time series.

Regarding the spatial variability of the end-of-summer SLA at the scale of the French Alps, as discussed in Rabatel and others (2013b), a factor analysis distinguished two groups of glaciers corresponding to the northern Alps (Mont Blanc) and the southern Alps (Ecrins), respectively. The distinction between the two groups is related to a higher elevation of the end-of-summer SLA for the glaciers in the southern sector, which could be associated with differences in winter accumulation between the southern and northern French Alps (i.e. less accumulation in the southern French Alps) along with warmer summer temperatures in the southern sector that would increase ablation. Indeed, a decreasing trend in the elevation of the end-of-summer SLA appeared from south to north, with a mean end-of-summer SLA

located on average 100 m higher for the glaciers in the southern sector.

Regarding the causes of the variability of the end-of-summer SLA in space and over time, Rabatel and others (2013b) showed that the mean end-of-summer SLA over the study period of each glacier is strongly controlled by its morpho-topographic variables, namely its average altitude, surface area, latitude and aspect. On the other hand, the interannual variability of the mean end-of-summer SLA of the glaciers studied is strongly controlled by climate variables. Indeed, the observed increasing trend in the mean end-of-summer SLA was mainly driven by increasing temperatures, and the nonlinear low-frequency fluctuations in the mean end-of-summer SLA time series were significantly correlated with winter precipitation anomalies.

#### 4.3. Mean glacier-wide mass balance over the periods 1979–2011 and 2003–11

Figure 4 shows the difference in DEMs in the Massif du Mont-Blanc (French side only) and Massif des Aiguilles Rouges (northern part of the map) over the period 1979–2011. The maximum drop in glacier surface elevation was between 100 m and 130 m on the lower reaches of Mer de Glace, Glacier d'Argentière and Glacier de Tré la Tête. A comparison between the mean glacier-wide mass balance per period derived from satellite images and computed by the GLACIOCLIM observatory for Glacier d'Argentière and the Mer de Glace showed very similar values for the period



1979–2011. The mean annual glacier-wide mass balance of Glacier d'Argentière (Mer de Glace) derived from satellite data was  $-0.70 \text{ m w.e. a}^{-1}$  ( $-0.80 \text{ m w.e. a}^{-1}$ ) and from the photogrammetric data used in the adjustment of glacier-wide mass balance computed from ground measurements, it was  $-0.70 \text{ m w.e. a}^{-1}$  ( $-0.74 \text{ m w.e. a}^{-1}$ ). Over the period 2003–11, the satellite-derived mean annual mass balances were  $0.2 \text{ m w.e. a}^{-1}$  less negative than the field balances for the two glaciers, a value within the range of uncertainty in the two methods.

The region-wide mass-balance values of the Massif du Mont-Blanc and Aiguilles Rouges was  $-0.65 \pm 0.23 \text{ m w.e. a}^{-1}$  for the period 1979–2011, and was  $-1.83 \pm 0.49 \text{ m w.e. a}^{-1}$  for the period 2003–11. Further south, the region-wide mean annual mass-balance values of the Massif de la Vanoise and Massif des Ecrins (Fig. 1) were  $-0.62 \pm 0.20$  and  $-0.72 \pm 0.33 \text{ m w.e. a}^{-1}$ , respectively, over the period 1979–2011. At the scale of the French Alps, the region-wide mass balance for the period 1979–2011 was  $-0.66 \pm 0.27 \text{ m w.e. a}^{-1}$ . This value is in very good agreement with the estimate made by Fischer and others (2015) who found a value of  $-0.62 \pm 0.07 \text{ m w.e. a}^{-1}$  for the Swiss glaciers over the period 1980–2010, and also with the mean mass balance of  $-0.68 \text{ m w.e. a}^{-1}$  found for nine glaciers throughout the Alps for the period 1983–2008 using WGMS data (Huss, 2012). Using all the available data in the WGMS database, Zemp and others (2015) also concluded that the last decades of the 20th century and the first decade of the 21st century were the most negative since the beginning of observational records, with mean annual mass-balance values ranging from  $-0.5$  to  $-0.8 \text{ m w.e. a}^{-1}$ ; values in line with our estimate.

#### 4.4. Changes in mass balance in the French Alps over the period 1983–2014

Using the annual end-of summer snow line altitudes,  $SLA_t$ , presented in Section 4.2 and the mean mass balance,  $\bar{B}$ , presented in Section 4.3, the glacier-wide mass balance,  $B_a$ , of

each of the 30 glaciers was reconstructed for the period 1983–2014 using Eqns (1) and (2).

It should be noted that  $\bar{B}$  was computed for the period 1979–2011, which is slightly different from the period 1983–2014. From the mass-balance measurements available for Argentière and Saint-Sorlin glaciers from the GLACIOCLIM observatory since the 1970s, we computed the difference in  $\bar{B}$  between 1979–2011 and 1983–2011 on the one hand, and between 1979–2011 and 1979–2014 on the other hand.  $\bar{B}_{1983-2011}$  was  $0.14 \text{ m w.e. a}^{-1}$  more negative than  $\bar{B}_{1979-2011}$ , in agreement with the above-mentioned positive annual mass balances in the late 1970s–early 1980s. This difference was applied to each of the 30 glaciers by subtracting  $0.14 \text{ m w.e. a}^{-1}$  from the  $\bar{B}_{1979-2011}$  to obtain an adjusted  $\bar{B}_{1983-2011}$ . For the last 3 a of the series,  $\bar{B}_{1979-2014}$  computed from available ground measurements was only  $0.02 \text{ m w.e. a}^{-1}$  more negative than  $\bar{B}_{1979-2011}$ . As a consequence, the adjusted  $\bar{B}_{1983-2011}$  value was retained for the period 1983–2014.

Figure 5 shows the comparison between the glacier-wide mass-balance values obtained from GLACIOCLIM (field measurements adjusted with aerial photogrammetry) and from the remote-sensing data over the period 1983–2014 for Glacier d'Argentière [Fig. 5(a)] and Glacier de Saint-Sorlin [Fig. 5(b)]. The determination coefficients ( $r^2$ ) were respectively, 0.81 and 0.96 (significant with a risk of error  $<1\%$ ) and the average differences in absolute value were  $0.31 \pm 0.20 \text{ m w.e. a}^{-1}$  and  $0.33 \pm 0.27 \text{ m w.e. a}^{-1}$ , respectively. These results confirm the efficiency of our method using only remote-sensing data to quantify the glacier-wide mass balance. Considering the results in more detail, it will be seen that in some years the difference between the two methods exceeded  $0.5 \text{ m w.e. a}^{-1}$ . For Glacier d'Argentière, this was the case in 1995, 2002, 2003 and 2013. For the first 3 a, the remote-sensing mass balances were too positive compared with the GLACIOCLIM values. This could be due to the low position of the end-of-summer SLA and the fact images were acquired before the end of the ablation season (on 31, 18 and 23 August, respectively). For the year 2013, the remote-sensing mass balance was too

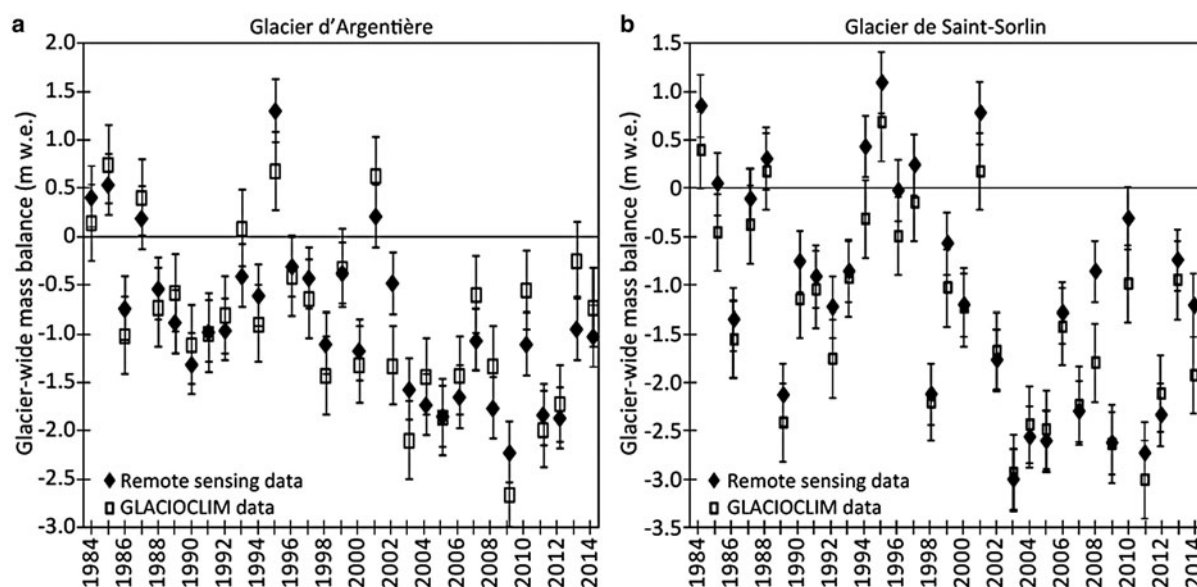


Fig. 5. Glacier-wide mass-balance time series for the period 1983–2014, quantified from the end-of-summer snow line (black diamond) and field measurements adjusted by photogrammetry (GLACIOCLIM data, square) for Glacier d'Argentière (a) and Glacier de Saint-Sorlin (b). Vertical bars represent the uncertainties.

negative compared with the GLACIOCLIM value (a difference of 0.7 m w.e.), but the image was acquired on 1 September, so this difference cannot be explained by the date of the satellite image. For Glacier de Saint-Sorlin, differences between the two methods were  $>0.5$  m w.e.  $a^{-1}$  for 5 a (1985, 1994, 2001, 2008 and 2010). In each one of these cases, the remote-sensing mass balance was too positive (or not sufficiently negative), but in all these years the images were acquired between 24 August and 23 September, i.e. not early enough in the season to explain the low end-of-summer SLA values.

Figure 6 shows the glacier-wide annual mass-balance time series for the 30 glaciers in the French Alps for the period 1983–2014. Considering annual data for the entire set of glaciers and the entire study period [Fig. 6(a)] it is noteworthy that the standard deviation of the values for each year was almost constant over the entire period ( $\pm 0.56$  m w.e.). Interannual variability and overall changes in glacier-wide mass balance over the study period are logically linked to those described for the end-of-summer SLA in Section 4.2. Balanced and positive years are mostly at the beginning of the study period, while negative to very negative glacier-wide mass-balance values dominate the last decade. The change in trend in the glacier-wide mass balance in the early 2000s can clearly be seen in Figs. 6(a) and 6(b). The difference in the average mass balance for the 30 glaciers between the periods 1983–2002 and 2003–14 was  $>1$  m w.e.  $a^{-1}$  [Fig. 6(a)]. This corresponds to 3.25-fold more negative average mass losses during the second period, which is in good agreement with results of Berthier and others (2014), who reported a 3.3-fold increase in mass loss over similar periods for glaciers in the Massif du Mont-Blanc. Using mass balances measured on 10 glaciers in the Swiss Alps between 1950 and 2010, Huss and others (2015) also showed an increase in glacier mass loss during the last decade with a decadal average two times more negative between 2000 and 2010 than between 1980 and 2000. The higher mass loss rate in the French Alps than in the

Swiss Alps was already mentioned by Huss (2012). The possible link between these regional differences and different climate regimes in the French and Swiss Alps needs to be thoroughly analyzed.

In terms of cumulative loss or mean glacier wide mass balance over the entire study period, Fig. 6(b) and Table 1 underline the significant differences between the glaciers. Glacier du Mont de Lans (Ecrins) and Glacier du Baounet (Vanoise) presented respectively, the lowest and highest cumulative losses:  $-15.4$  and  $-37.9$  m w.e. The average cumulative loss for the 30 glaciers was  $-26.8 \pm 5.2$  m w.e. As mentioned in previous studies (e.g. Jóhannesson and others, 1989; Huss and others, 2012), such differences between neighboring glaciers influenced by similar climate conditions are linked with the dynamic response of glaciers to a change in climate forcing. Indeed, glacier dynamics governs the mass transfer from the upper to the lower reaches of the glaciers, which, together with the surface mass balance, control changes in the glacier geometry (i.e. length, surface area and surface elevation). Because the glacier surface area, length, slope and elevations (min., max., mean) are easy to extract from a glacier inventory and are considered as indicative of glacier dynamics, these data are often used to infer differences in long-term changes in mass between glaciers (e.g. Hoelzle and others, 2003; Huss and others, 2012). For example, Huss and others (2012) found significant, although rather low, correlations between mean 82-a mass balances and the surface area of 36 glaciers and the slope of their tongue. With our sample of 30 glaciers and 31 a of mass balances, we failed to find significant correlations with the glacier surface area and changes in surface area, length and changes in length, and minimum or maximum elevations (Fig. 7). The only significant correlations we found were with the mean elevation ( $r = 0.44$ ,  $n = 30$ ,  $p < 0.02$ ), commonly considered as a proxy of the ELA0 (Rabatel and others, 2013b; Braithwaite, 2015), and with the slope of the lowermost 20% of the glacier surface area ( $r = 0.43$ ,  $n = 30$ ,  $p < 0.02$ ). Combining

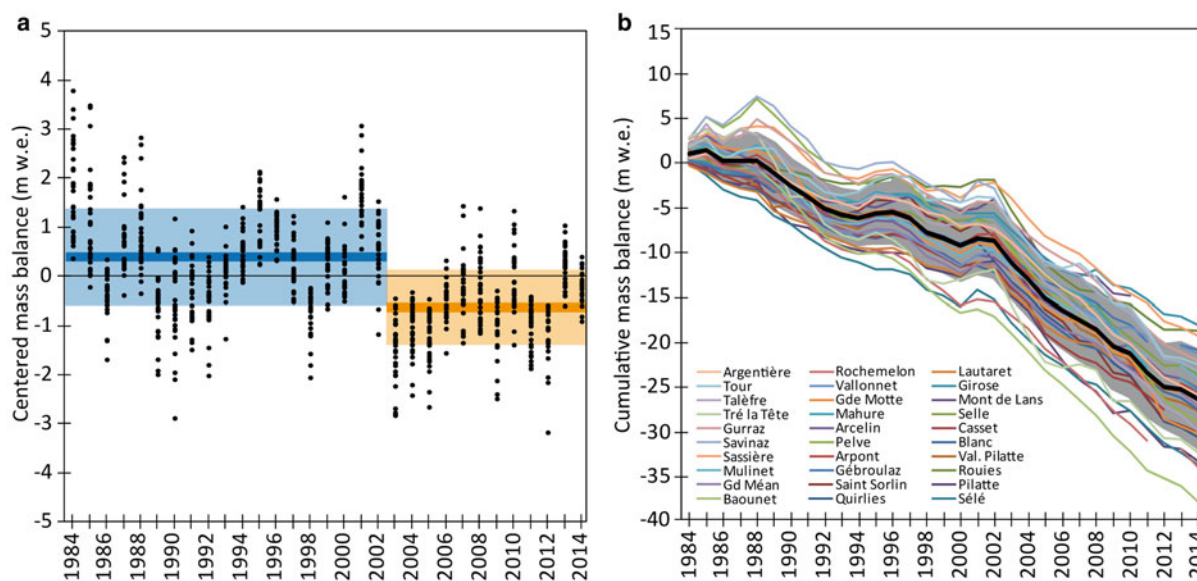
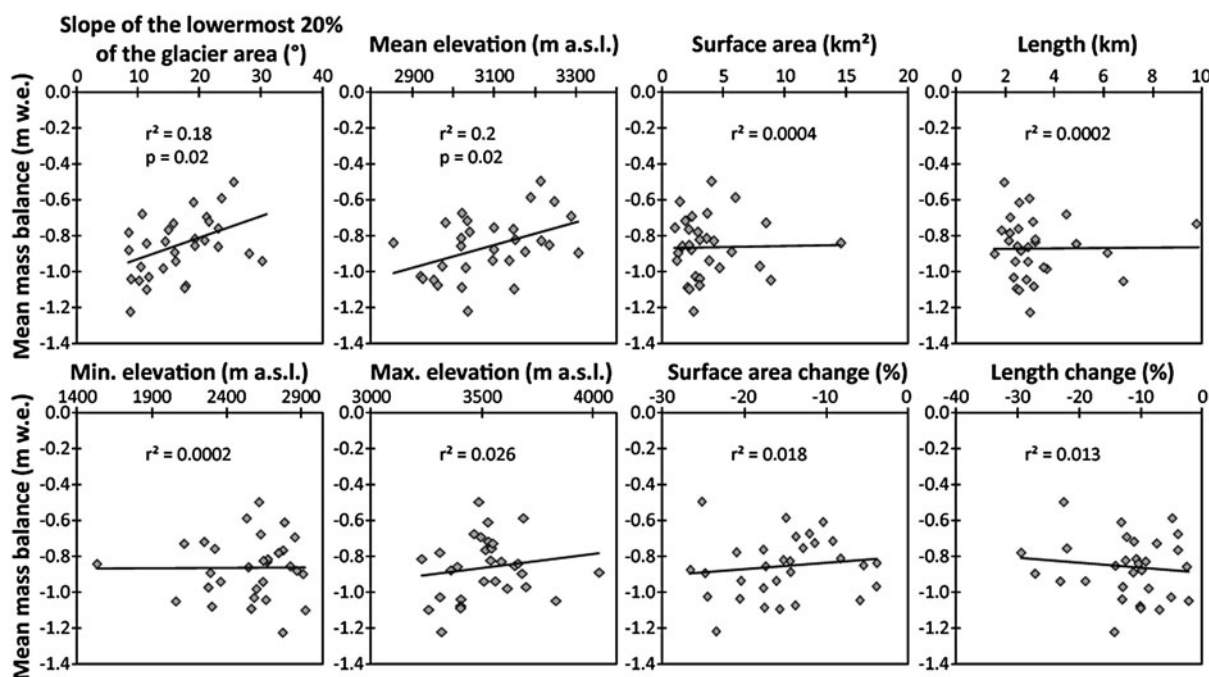


Fig. 6. Glacier-wide mass-balance time series for 30 glaciers in the French Alps (1983–2014), quantified from the end-of-summer snow line. (a) Centered annual values (blue and orange lines represent the average over the periods 1984–2002 and 2003–14 respectively; the light blue and light orange boxes show the  $\pm 1$  standard deviation range). (b) Cumulative values (the black curve is the average of the 30 glaciers and the gray area shows the  $\pm 1$  standard deviation interval).



**Fig. 7.** Comparison between the mean glacier-wide mass balance over the entire study period (1983–2014) and morpho-topographic characteristics of the 30 glaciers studied (slope of the lowermost 20% of the glacier surface area, elevations, initial surface area, initial length), and changes in surface area and length over the study period.

these two variables into a multivariate regression showed that 25% of the variance of the 31-a average mass balance of the studied glaciers can be explained by these topographic variables. As a consequence, other characteristics such as local specific meteorological conditions, or the distribution of glacier thickness, or the size of the accumulation zone may probably play a significant role in the differences in mass balance between neighboring glaciers.

The absence of correlation between mass changes and surface area or length changes for such a period of time (three decades) showed that at this timescale the response of the geometric adjustments of the glacier is not linear to changes in mass balance. As a consequence the changes in these variables cannot be used to infer mass changes.

#### 4.5. Use of an intermediate DEM

For quantification of mass balance using DEMs, the mean surface area is generally taken as the arithmetic mean of the initial and final areas. As discussed by Thibert and other (2008), this assumes that surface and mass-balance trends are linear, which is not necessarily true, all the more when the study period is long or when the glacier surface changes from increase to decrease. We computed the glacier-wide mass balance for the glaciers of the Massif du Mont-Blanc with and without an intermediate DEM, i.e. the one from 2003 in addition to the two DEMs delimiting the study period. Figure 8 compares the cumulative glacier-wide mass balance of the Glacier d'Argentière obtained from GLACIOCLIM (Vincent and others, 2009) and that quantified from remote-sensing data. GLACIOCLIM data are shown by the black curve, those quantified by remote sensing by the gray and red curves. In the case of the gray curve, only two DEMs were used (one from 1979 and one from 2011). In the case of the red curve, an additional DEM (the one from 2003) was also used for the quantification

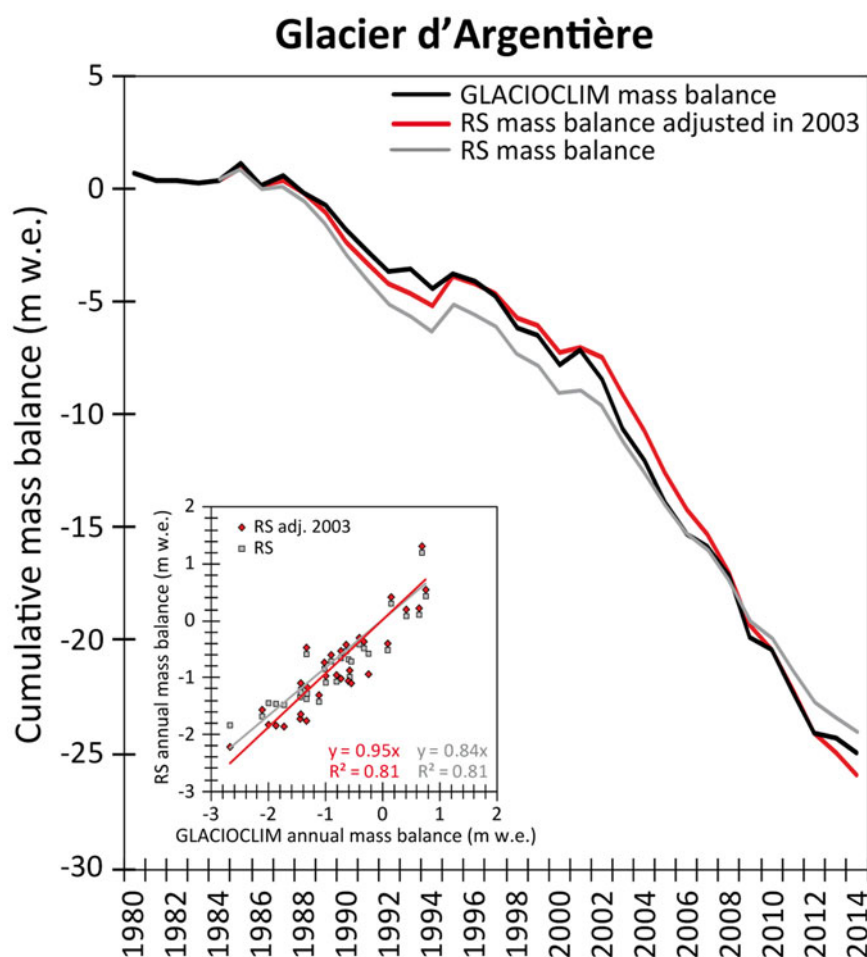
of the annual mass balance. The agreement between the red and black curves is much better (the cumulative glacier-wide mass balance over the 1983–2014 period was  $-25.98$  and  $-25.26$  m w.e. using the satellite-derived and GLACIOCLIM data, respectively) than between the gray and black curves. In fact, using only the DEMs from 1979 and 2011 resulted in a 7% underestimation of the cumulative mass balance at the end of the period. The improvement in the remote-sensing data adjusted in 2003 is also illustrated by the inner scatter plot showing that the linear regression is closer to the 1:1 diagonal for the adjusted remote-sensing data than for the unadjusted ones compared with the GLACIOCLIM data (the slope of the regression line increases from 0.84 to 0.95; this increase is significant considering the error on the slope).

Thus, the use of an intermediate DEM can reduce errors due to nonlinear changes in surface area and is recommended when the study period is long (several decades) and may include periods of glacial advance and retreat.

## 5. CONCLUSION

We presented the application of a methodological framework based on the use of optical satellite remote-sensing data only to compute time series of glacier-wide mass balance for 30 mountain glaciers located in the French Alps. This method enabled reconstruction of the 31-a glacier-wide mass-balance time series, thereby multiplying by six the number of glaciers with available long-term annual mass-balance time series in the French Alps. This underlines the high potential of this method to increase the available data at global scale, which falls within the second tier of the international glacier monitoring strategy defined by the Global Terrestrial Network for Glaciers. It should be noted that some limitations of this method compared with in-situ monitoring are that: (1) neither the seasonal component nor the spatial distribution of the mass balance





**Fig. 8.** Cumulative glacier-wide mass balance of Glacier d'Argentière in the Massif du Mont-Blanc for the period 1983–2014 quantified using the end-of-summer snow line and DEMs, with or without adjustment using an intermediate DEM (red and gray lines, respectively). The cumulative glacier-wide mass balance from field measurements since 1979 and adjusted using the geodetic method (Vincent and others, 2009) is also shown (black line) and the inset shows a comparison of the annual values between field and remote-sensing glacier-wide mass balances.

can be retrieved; and (2) only glaciers with an uppermost elevation high enough to allow preserving an accumulation zone at the end of the ablation season can be studied.

Glacier-wide annual mass-balance time series reconstructed for the 30 glaciers confirmed:

- That despite good agreement in the interannual mass variations from one glacier to another related to meteorological conditions, the cumulative mass loss at decadal timescales varied considerably. At the scale of a few decades, the changes in glacier surface area and length are not representative of changes in mass balance. This suggests that the distribution of glacier thickness and the ice flow need to be considered to better understand the relationships between changes in mass and in geometry.
- That there was a shift in the trend of glacier mass loss in the early 2000s, with a 3.25-fold increase in the average mass losses by the 30 glaciers between the periods 1983–2002 and 2003–14.

At the scale of the French Alps, our estimated region-wide mass balance for the period 1979–2011 was  $-0.66 \pm 0.27$  m w.e.  $a^{-1}$ , which is in good agreement with estimates made in other studies of the European Alps over the same time period.

The next step will be automating the method in order to apply it globally or at least for glaciers where the end-of-

summer snow line can be considered as a proxy of the ELA, taking advantage of the global DEMs available since the late 1990s–early 2000s, the archives of optical satellite data and the upcoming images provided by the latest generation of satellites like Landsat 8, SPOT6–7 or Sentinel-2. However, such a global application still needs to tackle some problems such as: automating the detection of the end-of-summer snow line and the computation of its elevation, or finding DEMs of sufficient accuracy to compute the geodetic balance from the late 1970s to early 1980s for the long-term application of the method, which for some mountain ranges might not be so easy as for the European Alps.

#### ACKNOWLEDGEMENTS

First of all, the authors wish to pay tribute to Louis Reynaud who died in February 2016, to his investment on glaciers' monitoring, particularly in the French Alps, and his implication in the development of the method presented in this study. This study was conducted in the framework of the French glacier observatory GLACIOCLIM (<http://www-igge.ujf-grenoble.fr/ServiceObs/index.htm>). This work was made possible thanks to the Labex OSUG@2020 (*Investissements d'avenir* – ANR10 LABX56); USGS-EDC, NASA/METI/AIST/

Japan Space systems, U.S./Japan ASTER Science Team and the GLIMS initiative, which gave us free access to Landsat images and ASTER images. We are also grateful to the French National Geographic Institute (*Institut Géographique National*, IGN) for providing the 1979 DEM; CNES / SPOT-Image ISIS program, contracts # 0103-157, 0412-725, 2010-405, 2010-435 and 2011-513 for providing the SPOT images and SPOTDEM from 2003 and 2011. Finally, we thank G. Cogley (editor in chief), B. Kulesa (scientific editor) and the two anonymous referees for their constructive comments used to improve the paper.

## REFERENCES

- Berthier E and Vincent C (2012) Relative contribution of surface mass balance and ice-flux changes to the accelerated thinning of Mer de Glace, French Alps, over 1979–2008. *J. Glaciol.*, **58**, 501–512 (doi: 10.3189/2012JoG11J083)
- Berthier E, Arnaud Y, Vincent C and Rémy F (2006) Biases of SRTM in high-mountain areas: implications for the monitoring of glacier volume changes. *Geophys. Res. Lett.*, **33**, L08502 (doi: 10.1029/2006GL025862)
- Berthier E and 10 others (2014) Glacier topography and elevation changes derived from Pléiades sub-meter stereo images. *Cryosphere*, **8**, 2275–2291 (doi: 10.5194/tc-8-2275-2014)
- Braithwaite RJ (1984) Can the mass balance of a glacier be estimated from its equilibrium-line altitude? *J. Glaciol.*, **30**(106), 364–368
- Braithwaite RJ (2015) From Doktor Kurowski's Schneegrenze to our modern glacier equilibrium line altitude (ELA). *Cryosphere*, **9**, 2135–2148 (doi: 10.5194/tc-9-2135-2015)
- Brun F and 8 others (2015) Seasonal changes in surface albedo of Himalayan glaciers from MODIS data and links with the annual mass balance. *Cryosphere*, **9**, 341–355 (doi: 10.5194/tc-9-341-2015)
- Carlson B and 8 others (2014) Accounting for treeline shift, glacier retreat and primary succession in mountain plant distribution models. *Div. Distrib.*, **20**(12), 1379–1391 (doi: 10.1111/ddi.12238)
- Cauvy-Fraunié S and 5 others (2013) Glacial influence in tropical mountain hydrosystems evidenced by the diurnal cycle in water levels. *Hydrol. Earth Syst. Sci.*, **17**, 4803–4816 (doi: 10.5194/hess-17-4803-2013)
- Dumont M and 6 others (2012) Linking glacier annual mass balance and glacier albedo retrieved from MODIS data. *Cryosphere*, **6**, 1527–1539 (doi: 10.5194/tc-6-1527-2012)
- Fischer M, Huss M and Hoelzle M (2015) Surface elevation and mass changes of all Swiss glaciers 1980–2010. *Cryosphere*, **9**(2), 525–540 (doi: 10.5194/tc-9-525-2015)
- Gabbi J, Carenzo M, Pellicciotti F, Bauder A and Funk M (2014) A comparison of empirical and physically based glacier surface melt models for long-term simulations of glacier response. *J. Glaciol.*, **60**(224), 1140–1154 (doi: 10.3189/2014JoG14J011)
- Gardelle J, Berthier E, Arnaud Y and Kääb A (2013) Region-wide glacier mass balances over the Pamir-Karakoram-Himalaya during 1999–2011. *Cryosphere*, **7**, 1263–1286 (doi: 10.5194/tc-7-1263-2013)
- Gardent M, Rabatel A, Dedieu J-P and Deline P (2014) Multitemporal glacier inventory of the French Alps from the late 1960s to the late 2000s. *Glob. Planet. Change*, **120**, 24–37 (doi: 10.1016/j.gloplacha.2014.05.004)
- Gardner A and 15 others (2013) A reconciled estimate of glacier contributions to sea level rise: 2003 to 2009. *Science*, **340**, 852–857 (doi: 10.1126/science.1234532)
- Gilbert A, Vincent C, Wagnon P, Thibert E and Rabatel A (2012) The influence of snow cover thickness on the thermal regime of Tête Rousse Glacier (Mont Blanc range, 3200 m a.s.l.): consequences for outburst flood hazards and glacier response to climate change. *J. Geophys. Res.*, **117**, F04018 (doi: 10.1029/2011JF002258)
- Ginot P and 10 others (2014) A 10 year record of black carbon and dust from a Mera Peak ice core (Nepal): variability and potential impact on melting of Himalayan glaciers. *Cryosphere*, **8**, 1479–1496 (doi: 10.5194/tc-8-1479-2014)
- Helmstetter A, Nicolas B, Comon P and Gay M (2015) Basal icequakes recorded beneath an Alpine glacier (Glacier d'Argentière, Mont Blanc, France): evidence for stick-slip motion? *J. Geophys. Res.*, **120**(3), 379–401 (doi: 10.1002/2014JF003288)
- Hoelzle M, Haeberli W, Dischl M and Peschke W (2003) Secular glacier mass balances derived from cumulative glacier length changes. *Global Planet. Change*, **36**(4), 295–306
- Huss M (2012) Extrapolating glacier mass balance to the mountain-range scale: the European Alps 1900–2100. *Cryosphere*, **6**, 713–727 (doi: 10.5194/tc-6-713-2012)
- Huss M (2013) Density assumptions for converting geodetic glacier volume change to mass change. *Cryosphere*, **7**, 877–887 (doi: 10.5194/tc-7-877-2013)
- Huss M and Bauder A (2009) 20<sup>th</sup>-century climate change inferred from four long-term point observations of seasonal mass balance. *Ann. Glaciol.*, **50**(50), 207–214 (doi: 10.3189/172756409787769645)
- Huss M, Hock R, Bauder A and Funk M (2012) Conventional versus reference-surface mass balance. *J. Glaciol.*, **58**(208), 278–286 (doi: 10.3189/2012JoG11J216)
- Huss M, Dhulst L and Bauder A (2015) New long-term mass-balance series for the Swiss Alps. *J. Glaciol.*, **61**(227), 551–562 (doi: 10.3189/2015JoG15J015)
- Jóhannesson T, Raymond C and Waddington E (1989) Time-scale for adjustment of glaciers to changes in mass balance. *J. Glaciol.*, **35**(121), 355–369
- Litt M, Sicart JE, Helgason WD and Wagnon P (2015) Turbulence characteristics in the atmospheric surface layer for different wind regimes over the tropical Zongo Glacier (Bolivia, 16°S). *Bound. Layer Meteorol.*, **154**(3), 471–495 (doi: 10.1007/s10546-014-9975-6)
- Lliboutry L (1965) *Traité de glaciologie. Tome II: Glaciers, variations du climat, sols gelés*. Masson et Cie, Paris, France
- Mann HB and Whitney DR (1947) On a test of whether one of two random variables is stochastically larger than the other. *Ann. Math. Stat.*, **18**(1), 50–60 (doi: 10.1214/aoms/1177730491)
- Pfeffer WT and 19 others (2014) The Randolph Glacier Inventory: a globally complete inventory of glaciers. *J. Glaciol.*, **60**(221), 537–552 (doi: 10.3189/2014JoG13J176)
- Rabatel A, Dedieu J-P and Vincent C (2005) Using remote sensing data to determine equilibrium-line altitude and mass-balance time series: validation on three French glaciers, 1994–2002. *J. Glaciol.*, **51**(175), 539–546 (doi: 10.3189/172756505781829106)
- Rabatel A, Machaca A, Francou B and Jomelli V (2006) Glacier recession on the Cerro Charquini (Bolivia, 16°S) since the maximum of the Little Ice Age (17th century). *J. Glaciol.*, **52**(176), 110–118 (doi: 10.3189/172756506781828917)
- Rabatel A, Dedieu J-P, Thibert E, Letréguilly A and Vincent C (2008) 25 years (1981–2005) of equilibrium-line altitude and mass balance reconstruction on Glacier Blanc, French Alps, using remote-sensing methods and meteorological data. *J. Glaciol.*, **54**(185), 307–314 (doi: 10.3189/002214308784886063)
- Rabatel A and 7 others (2012a) Can the snowline be used as an indicator of the equilibrium line and mass balance for glaciers in the outer tropics? *J. Glaciol.*, **58**(212), 1027–1036 (doi: 10.3189/2012JoG12J027)
- Rabatel A, Dedieu J-P, Letréguilly A and Six D (2012b) Remote sensing monitoring of the evolution of glacier surface area and equilibrium-line altitude in the French Alps. In *Proceedings of the 25<sup>th</sup> Symposium International Association of Climatology*, 5–8 September 2012, Grenoble, France
- Rabatel A and 27 others (2013a) Current state of glaciers in the tropical Andes: a multi-century perspective on glacier evolution and climate change. *Cryosphere*, **7**, 81–102 (doi: 10.5194/tc-7-81-2013)
- Rabatel A, Letréguilly A, Dedieu J-P and Eckert N (2013b) Changes in glacier equilibrium-line altitude in the western Alps from 1984

- to 2010: evaluation by remote sensing and modeling of the morpho-topographic and climate controls. *Cryosphere*, **7**, 1455–1471 (doi: 10.5194/tc-7-1455-2013)
- Rees WG (2006) *Remote sensing of snow and ice*. CRC Press, Boca Raton, Florida, 285 pp
- Réveillet M, Rabatel A, Gillet-Chaulet F and Soruco A (2015) Simulations of changes in Glacier Zongo, Bolivia (16°S), over the 21<sup>st</sup> century using a 3D full-Stokes model and CMIP5 climate projections. *Ann. Glaciol.*, **56**(70), 89–97 (doi: 10.3189/2015AoG70A113)
- Six D and Vincent C (2014) Sensitivity of mass balance and equilibrium-line altitude to climate change in the French Alps. *J. Glaciol.*, **60**(223), 867–878 (doi: 10.3189/2014JG14J014)
- Sold L and 5 others (2013) Methodological approaches to infer end-of-winter snow distribution on alpine glaciers. *J. Glaciol.*, **59**(218), 1047–1059 (doi: 10.3189/2013JG13J015)
- Sorucu A and 6 others (2015) Impacts of glacier shrinkage on water resources of La Paz city, Bolivia (16°S). *Ann. Glaciol.*, **56**(70), 147–154 (doi: 10.3189/2015AoG70A001)
- Thibert E, Blanc R, Vincent C and Eckert N (2008) Glaciological and volumetric mass-balance measurements: error analysis over 51 years for Glacier de Sarennes, French Alps. *J. Glaciol.*, **54**(186), 522–532 (doi: 10.3189/002214308785837093)
- Thibert E, Eckert N and Vincent C (2013) Climatic drivers of seasonal glacier mass balances: an analysis of 6 decades at Glacier de Sarennes (French Alps). *Cryosphere*, **7**, 47–66 (doi: 10.5194/tc-7-47-2013)
- Vaughan DG and 13 others (2013) Observations: Cryosphere. In [Stocker TF and 9 others, eds. *Climate change 2013: the physical science basis*. Contribution of Working Group I to the Fifth Assessment Report of the Intergovernmental Panel on Climate Change. Cambridge University Press, Cambridge, UK and New York, NY, USA
- Vincent C (2002) Influence of climate change over the 20<sup>th</sup> century on four French glacier mass balances. *J. Geophys. Res.*, **107**(D19), 4375 (doi: 10.1029/2001JD000832)
- Vincent C, Vallon M, Reynaud L and Le Meur E (2000) Dynamic behavior analysis of glacier de Saint Sorlin, France, from 40 years of observations, 1957–97. *J. Glaciol.*, **46**(154), 499–506
- Vincent C and 5 others (2004) Ice ablation as evidence of climate change in the Alps over the 20<sup>th</sup> century. *J. Geophys. Res.*, **109**(D10), D10104 (doi: 10.1029/2003JD003857)
- Vincent C, Soruco A, Six D and Le Meur E (2009) Glacier thickening and decay analysis from 50 years of glaciological observations performed on Glacier d'Argentiére, Mont Blanc area, France. *Ann. Glaciol.*, **50**, 73–79
- WGMS (2013) *Glacier mass balance bulletin No. 12 (2010–2011)*. ICSU(WDS)/IUGG(IACS)/UNEP/UNESCO/WMO, World Glacier Monitoring Service, Zürich (doi: 10.5904/wgms-fog-2013-11)
- Zemp M and 38 others (2015) Historically unprecedented global glacier decline in the early 21<sup>st</sup> century. *J. Glaciol.*, **61**(228), 745–762 (doi: 10.3189/2015JG15J017)

## APPENDIX

**Table A1.** Characteristics of the 131 satellite images used for SLA measurements. For Landsat images, the pixel size is 15 and 30 m for the panchromatic and multispectral modes, respectively (LT5 = Landsat 5 TM, LE7 = Landsat 7 ETM+, L8 = Landsat 8 OLI). For SPOT images the pixel size is 2.5, 5 or 10 m for the panchromatic mode (P) and 10 or 20 m for the multispectral mode (XS) depending on the satellite. For ASTER images the pixel size is 15 m

Date dd/mm/yyyy	Sensor	Path-row	Date dd/mm/yyyy	Sensor	Path-Row
31/8/1984	LT5	196–028 and 196–029	2/8/2002	LE7	195–029
9/9/1984	LT5	195–028 and 195–029	18/8/2002	LE7	195–028
2/8/1985	LT5	196–028 and 196–029	14/9/2002	SPOT-5 XS	051–258
11/8/1985	LT5	195–028 and 195–029	5/10/2002	LE7	195–028 and 195–029
28/9/1985	LT5	195–029	12/8/2003	ASTER	195–029
9/9/1986	LT5	196–028	13/8/2003	LT5	195–028 and 195–029
5/10/1986	SPOT 1 P	051–258 and 051–259	22/8/2003	SPOT-2 P	052–259
17/10/1986	LT5	195–028	23/8/2003	SPOT-5 P	051–257 and 051–259
9/9/1987	LT5	196–028	21/9/2003	LT5	196–029
18/9/1987	LT5	195–029	14/8/2004	ASTER	195–029
27/8/1988	LT5	195–028 and 195–029	27/8/2004	SPOT-5 XS	051–259
12/9/1988	LT4	195–028 and 195–029	8/9/2004	LE7	195–028 and 195–029
26/9/1988	SPOT-1 XS	050–259	8/9/2004	ASTER	195–028 and 195–029
30/7/1989	SPOT-1 P	051–259	1/8/2005	ASTER	195–027 and 195–028
13/8/1989	LT5	195–029	10/8/2005	LE7	195–028
20/9/1989	SPOT-1 P	052–257 and 052–258	2/9/2005	LE7	196–028 and 196–029
1/9/1990	SPOT-2 XS	051–259	5/9/2006	LE7	196–028 and 196–029
10/9/1990	LT5	195–028	21/9/2006	LE7	196–028 and 196–029
19/8/1991	LT5	196–029	16/10/2006	LE7	195–028 and 195–029
25/8/1991	SPOT-2 P	052–257	24/9/2007	LE7	196–028 and 196–029
30/8/1991	SPOT-2 P	051–258 and 051–259	19/10/2007	LE7	195–029
5/8/1992	LT5	196–028	19/10/2007	ASTER	196–028 and 196–029
17/9/1992	SPOT-1 XS	051–259	18/8/2008	LE7	195–028 and 195–029
21/9/1992	SPOT-1 XS	051–257 and 051–258	2/9/2008	SPOT 5 XS	051–257, 052–258, 052–259 and 051–260
26/7/1993	SPOT-1 XS	050–259	7/9/2008	SPOT 4 XS	051–259
2/9/1993	SPOT-2 XS	051–257	15/8/2009	SPOT-5 XS	052–257 and 052–258
9/8/1994	SPOT-3 P	052–257 and 051–259	6/9/2009	LE7	195–029



Table A1. (Cont.)

Date dd/mm/yyyy	Sensor	Path-row	Date dd/mm/yyyy	Sensor	Path-Row
15/8/1994	SPOT-3 P	050–259 and 052–259	22/9/2009	LE7	195–028 and 195–029
31/8/1995	SPOT-2 XS	051–259	29/9/2009	LE7	196–029
31/7/1996	SPOT-3 P	052–259	30/9/2009	LT5	195–028
8/8/1996	SPOT-2 XS	051–257	31/8/2010	LE7	196–028 and 196–029
30/9/1997	SPOT-1 XS	051–257, 051–258, 051–259 and 051–260	9/9/2010	LE7	195–029
26/8/1998	SPOT-4 XS	052–257	15/9/2010	SPOT-5 XS	052–258
30/8/1998	SPOT-4 XS	051–259 and 052–258	16/9/2010	ASTER	195–027, 195–028 and 195–029
2/9/1999	LE7	196–029	23/9/2010	SPOT-4 XS	050–259
11/9/1999	LE7	195–028 and 195–029	12/9/2011	ASTER	195–028 and 195–029
12/8/2000	LE7	195–028	15/10/2011	SPOT-5 XS	051–257 and 051–258
26/8/2000	SPOT-1 XS	051–257	20/8/2012	ASTER	195–028
28/8/2000	LE7	195–029	20/8/2012	LE7	196–028 and 196–029
24/8/2001	SPOT-2 XS	050–259	1/9/2013	LE7	195–028
29/8/2001	SPOT-1 XS	051–257	9/9/2013	L8	195–029
7/9/2001	ASTER-1	195–029	25/9/2013	L8	195–029
2/10/2001	LE7	195–028 and 195–029	12/9/2014	L8	195–028 and 195–029
			28/9/2014	L8	195–028 and 195–029

MS received 26 January 2016 and accepted in revised form 17 August 2016; first published online 19 September 2016