



HAL
open science

Uncertainty quantification and ensemble forecast in coarse-grid or dimensionally-reduced computational fluid dynamics

Valentin Resseguier, Etienne Mémin, Bertrand Chapron

► **To cite this version:**

Valentin Resseguier, Etienne Mémin, Bertrand Chapron. Uncertainty quantification and ensemble forecast in coarse-grid or dimensionally-reduced computational fluid dynamics. ECCM - ECFD 2018 - 6th European Conference on Computational Mechanics - 7th European Conference on Computational Fluid Dynamics, Jun 2018, Glasgow, United Kingdom. pp.1-41. hal-01891183

HAL Id: hal-01891183

<https://hal.science/hal-01891183>

Submitted on 9 Oct 2018

HAL is a multi-disciplinary open access archive for the deposit and dissemination of scientific research documents, whether they are published or not. The documents may come from teaching and research institutions in France or abroad, or from public or private research centers.

L'archive ouverte pluridisciplinaire **HAL**, est destinée au dépôt et à la diffusion de documents scientifiques de niveau recherche, publiés ou non, émanant des établissements d'enseignement et de recherche français ou étrangers, des laboratoires publics ou privés.

Uncertainty quantification and ensemble forecast in coarse-grid or dimensionally-reduced computational fluid dynamics

Valentin Resseguier,
Etienne Mémin,
Bertrand Chapron



Motivations

- Rigorously identified subgrid dynamics effects
- Injecting likely small-scale dynamics
- Studying bifurcations and attractors



Climate projections

- Quantification of modeling errors



Ensemble forecasts and data assimilation

Contents

- Scalian
- Location uncertainty
- SQG under moderate uncertainty

Part I : SCALIAN

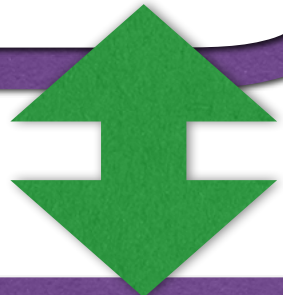
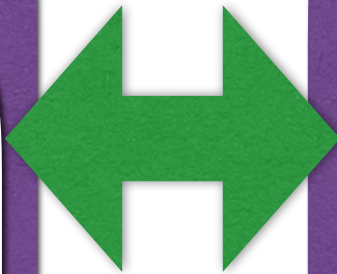
L@b
(~ 15 peoples)

Research, R&T, R&D

Expertise:

- Geophysical fluid dyn.
- Signal, data assimilation
- Machine Learning
- Multi-agents systems
- Drones

Other Business Units
~ 2400 people



CEN « Simulation » (~ 70 people)


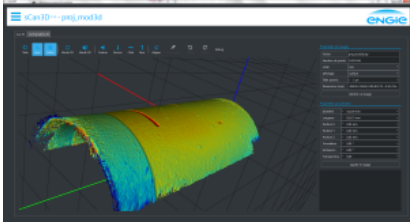



R&D and engineering

Expertise:

- Radar, optronics, sonar
- Geophysical fluid dyn.
- Mechanical and thermal

Business:

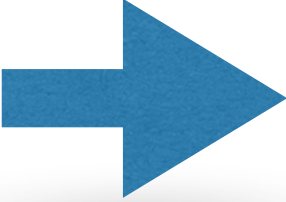
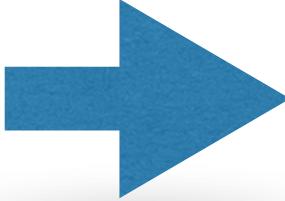
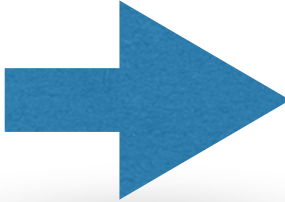
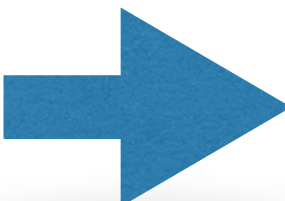
- Scientific softwares
- Simulations, HPC
- VR & AR

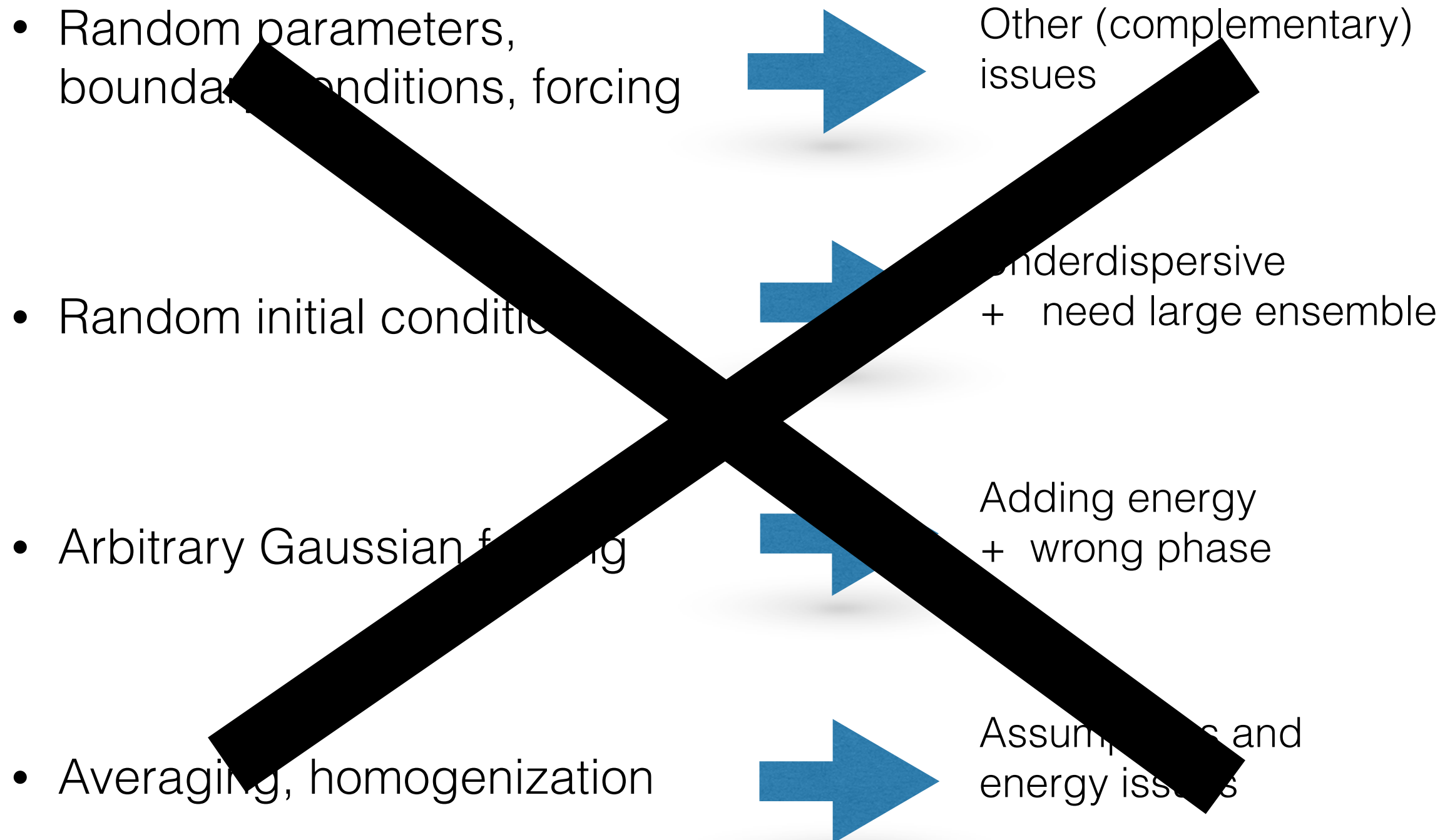
Part II

Location uncertainty (LU)

Usual random CFD

- Random parameters, boundary conditions, forcing  Other (complementary) issues
- Random initial conditions  Underdispersive + need large ensemble
- Arbitrary Gaussian forcing  Adding energy + wrong phase
- Averaging, homogenization  Assumptions and energy issues

Usual random CFD

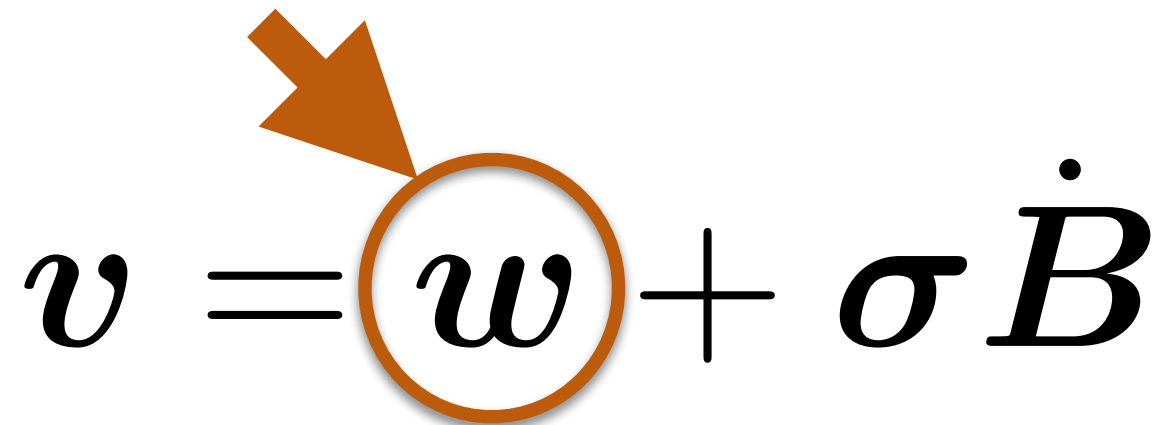


LU : Adding
random velocity

$$\boldsymbol{v} = \boldsymbol{w} + \sigma \dot{\boldsymbol{B}}$$

LU : Adding random velocity

Resolved
large scales

$$\boldsymbol{v} = \boldsymbol{w} + \sigma \dot{\boldsymbol{B}}$$


LU : Adding random velocity

Resolved
large scales

White-in-time
small scales

$$\boldsymbol{v} = \boldsymbol{w} + \sigma \dot{\boldsymbol{B}}$$

Large scales:

w

Small scales:

$\sigma \dot{B}$

Variance
tensor:

$$a = a(x, x) = \frac{\mathbb{E}\{\sigma dB (\sigma dB)^T\}}{dt}$$

LU : Adding random velocity

Resolved
large scales

White-in-time
small scales

$$v = w + \sigma \dot{B}$$

LU : Adding random velocity

Large scales:

w

Small scales:

$\sigma \dot{B}$

Variance tensor:

$$a = a(x, x) = \frac{\mathbb{E}\{\sigma dB (\sigma dB)^T\}}{dt}$$

Resolved large scales

White-in-time small scales

$$v = w + \sigma \dot{B}$$

References : Mikulevicius and Rozovskii, 2004
Flandoli, 2011

Memin, 2014
Resseguier et al. 2017 a, b, c
Chapron et al. 2017
Cai et al. 2017

Holm, 2015
Holm and Tyranowski, 2016
Arnaudon et al., 2017

Cotter and al 2017
Crisan et al., 2017
Gay-Balmaz & Holm 2017
Cotter and al 2018 a, b

Large scales:

w

Small scales:

$\sigma \dot{B}$

Variance
tensor:

$$a = a(x, x) = \frac{\mathbb{E}\{\sigma dB (\sigma dB)^T\}}{dt}$$

Advection of tracer Θ

$$\frac{D\Theta}{Dt} = 0$$

Large scales:

w

Small scales:

$\sigma \dot{B}$

Variance
tensor:

$$a = a(x, x) = \frac{\mathbb{E}\{\sigma dB (\sigma dB)^T\}}{dt}$$

Advection of tracer Θ

Large scales:

w

Small scales:

$\sigma \dot{B}$

Variance
tensor:

$$a = a(x, x) = \frac{\mathbb{E}\{\sigma d\mathbf{B} (\sigma d\mathbf{B})^T\}}{dt}$$

Advection of tracer Θ

$$\partial_t \Theta + w^* \cdot \nabla \Theta + \sigma \dot{B} \cdot \nabla \Theta = \nabla \cdot \left(\frac{1}{2} a \nabla \Theta \right)$$

Advection of tracer Θ

Large scales:

w

Small scales:

$\sigma \dot{B}$

Variance
tensor:

$$a = a(x, x) = \frac{\mathbb{E}\{\sigma d\mathbf{B} (\sigma d\mathbf{B})^T\}}{dt}$$

$$\partial_t \Theta + \underbrace{w^* \cdot \nabla \Theta + \sigma \dot{B} \cdot \nabla \Theta}_{\text{Advection}} = \nabla \cdot \left(\frac{1}{2} a \nabla \Theta \right)$$

Advection of tracer Θ

Large scales:

w

Small scales:

$\sigma \dot{B}$

Variance
tensor:

$$a = a(x, x) = \frac{\mathbb{E}\{\sigma d\mathbf{B} (\sigma d\mathbf{B})^T\}}{dt}$$

$$\partial_t \Theta + \underbrace{w^* \cdot \nabla \Theta + \sigma \dot{B} \cdot \nabla \Theta}_{\text{Advection}} = \underbrace{\nabla \cdot \left(\frac{1}{2} a \nabla \Theta \right)}_{\text{Diffusion}}$$

Advection of tracer Θ

Large scales:

w

Small scales:

$\sigma \dot{B}$

Variance
tensor:

$$a = a(x, x) = \frac{\mathbb{E}\{\sigma dB (\sigma dB)^T\}}{dt}$$

$$\partial_t \Theta + \underbrace{w^* \cdot \nabla \Theta + \sigma \dot{B} \cdot \nabla \Theta}_{\text{Advection}} = \underbrace{\nabla \cdot \left(\frac{1}{2} a \nabla \Theta \right)}_{\text{Diffusion}}$$

Drift correction

Advection of tracer Θ

Large scales:

w

Small scales:

$\sigma \dot{B}$

Variance
tensor:

$$a = a(x, x) = \frac{\mathbb{E}\{\sigma d\mathbf{B} (\sigma d\mathbf{B})^T\}}{dt}$$

Multiplicative
random
forcing

$$\partial_t \Theta + \underbrace{w^* \cdot \nabla \Theta + \sigma \dot{B} \cdot \nabla \Theta}_{\text{Advection}} = \underbrace{\nabla \cdot \left(\frac{1}{2} a \nabla \Theta \right)}_{\text{Diffusion}}$$

Drift correction

Advection of tracer Θ

Large scales:

w

Small scales:

$\sigma \dot{B}$

Variance tensor:

$$a = a(x, x) = \frac{\mathbb{E}\{\sigma d\mathbf{B} (\sigma d\mathbf{B})^T\}}{dt}$$

Multiplicative random forcing

$$\partial_t \Theta + \underbrace{w^* \cdot \nabla \Theta}_{\text{Advection}} + \underbrace{\sigma \dot{B} \cdot \nabla \Theta}_{\text{Diffusion}} = \nabla \cdot \left(\frac{1}{2} a \nabla \Theta \right)$$

Drift correction

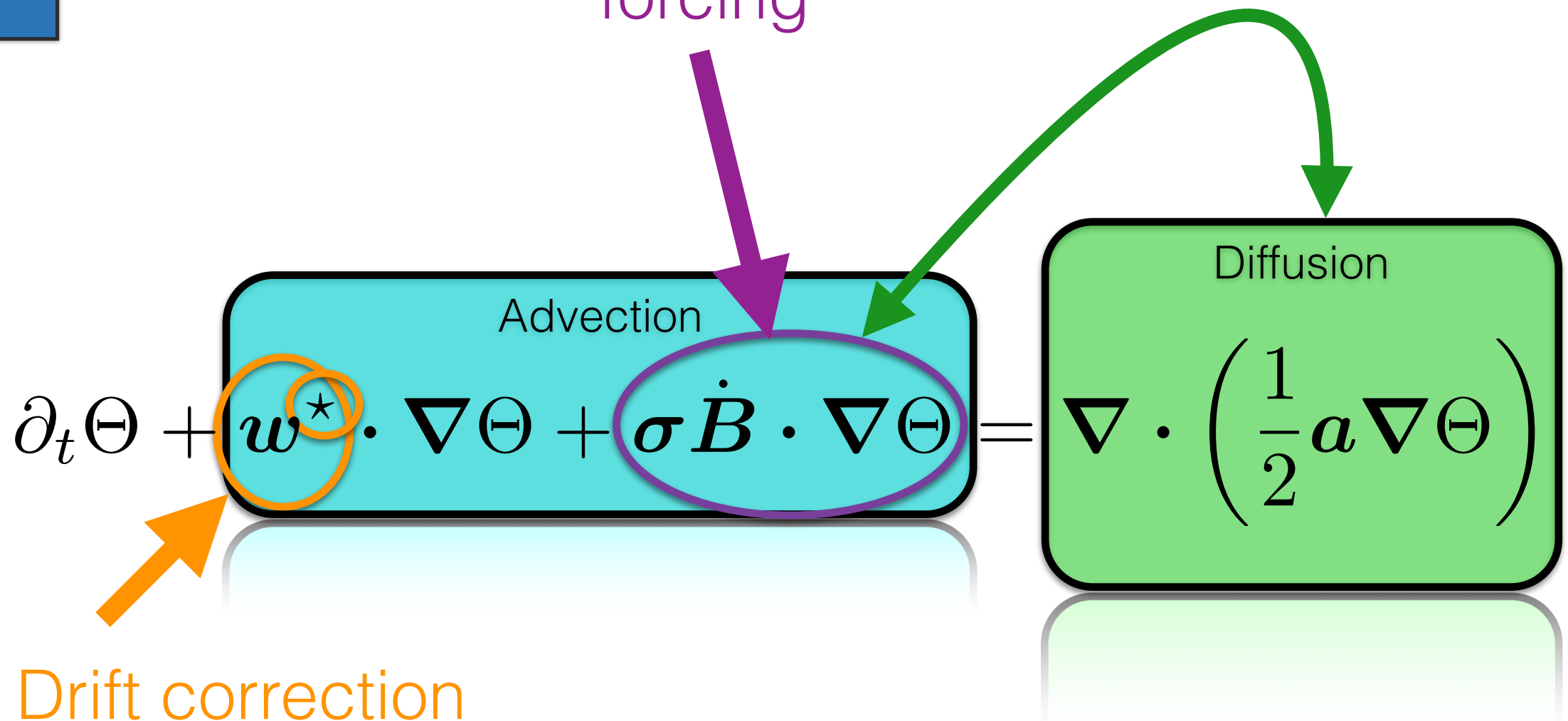
Advection of tracer Θ

Large scales:
 w

Small scales:
 $\sigma \dot{B}$

Variance tensor:
 $a = a(x, x) = \frac{\mathbb{E}\{\sigma d\mathbf{B} (\sigma d\mathbf{B})^T\}}{dt}$

Multiplicative random forcing



Advection of tracer Θ

Large scales:
 w

Small scales:
 $\sigma \dot{B}$

Variance tensor:
 $a = a(x, x) = \frac{\mathbb{E}\{\sigma d\mathbf{B} (\sigma d\mathbf{B})^T\}}{dt}$

Multiplicative random forcing

Balanced energy exchanges

$$\partial_t \Theta + \underbrace{w^* \cdot \nabla \Theta}_{\text{Advection}} + \underbrace{\sigma \dot{B} \cdot \nabla \Theta}_{\text{Diffusion}} = \nabla \cdot \left(\frac{1}{2} a \nabla \Theta \right)$$

Drift correction

A word about reduced order models

- Very fast simulation of very complex system (e.g. for industrial application)
- Physical model (PDE) simplified using observations

Reduced models under location uncertainty

- Rigorous and low-cost estimators
- Stabilization of the unstable modes
- Maintain variability of stable modes
- Uncertainty quantification

State of art

- Possible parametrization with eddy viscosity
- Impossible to parametrize with additional dissipation
Need ad hoc closure like MQG
(Sapsis and Majda, 2013a,b,c)

Part III

SQG under Moderate Uncertainty

SQG MU

Code available online

$t = 17$ days

SQG

$$\frac{Db}{Dt} = -\alpha_{HV} \Delta^4 b \quad \text{Hyper-viscosity}$$

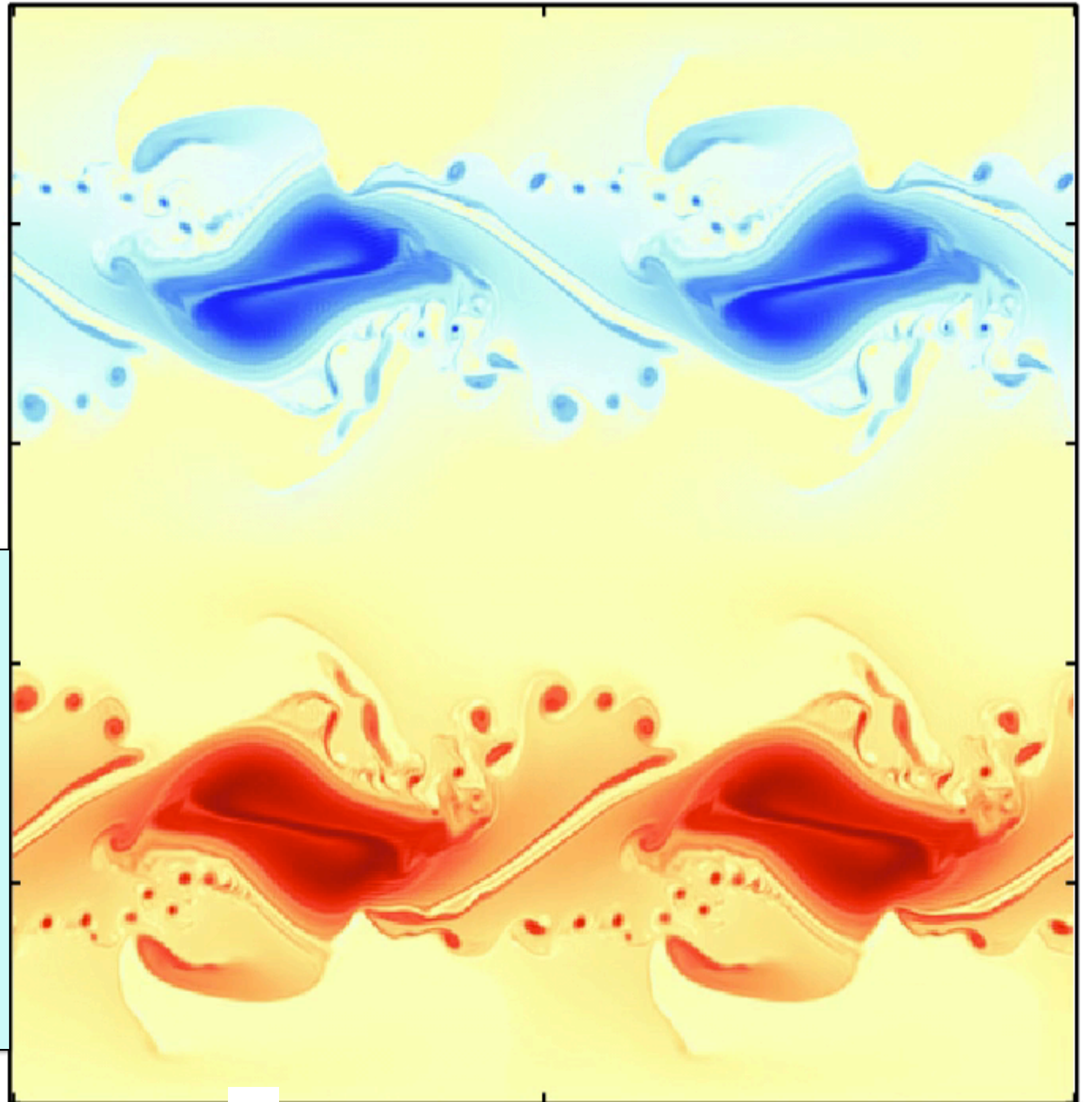
$$\mathbf{u} = \left(\text{cst.} \nabla^\perp \Delta^{-\frac{1}{2}} \right) b$$

Reference flow:

deterministic

SQG

1024 x 1024



$t = 17$ days

SQG

$$\frac{Db}{Dt} = -\alpha_{HV} \Delta^4 b \quad \text{Hyper-viscosity}$$

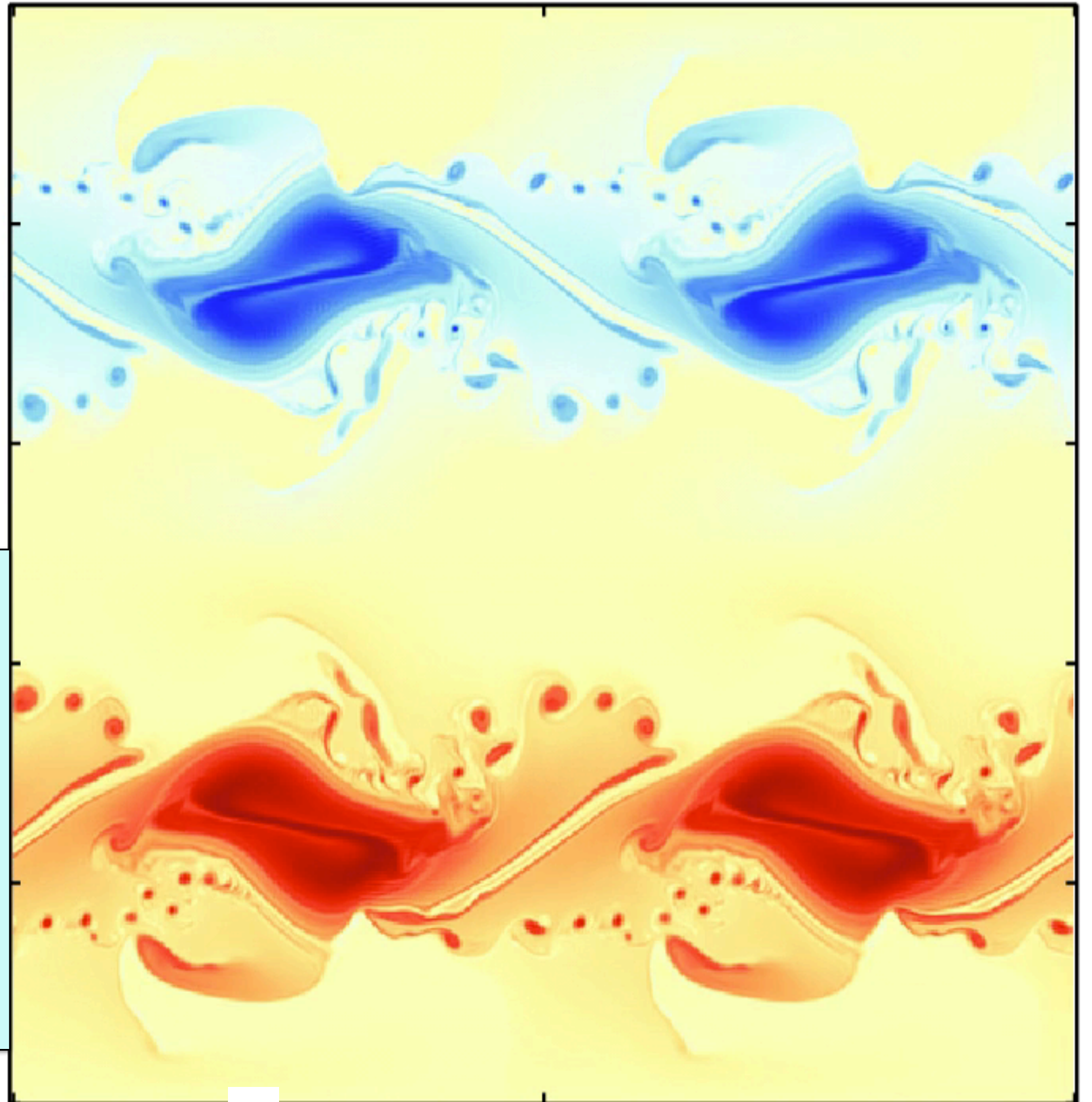
$$\mathbf{u} = \left(\text{cst.} \nabla^\perp \Delta^{-\frac{1}{2}} \right) b$$

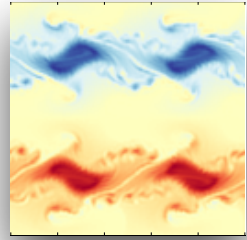
Reference flow:

deterministic

SQG

1024 x 1024



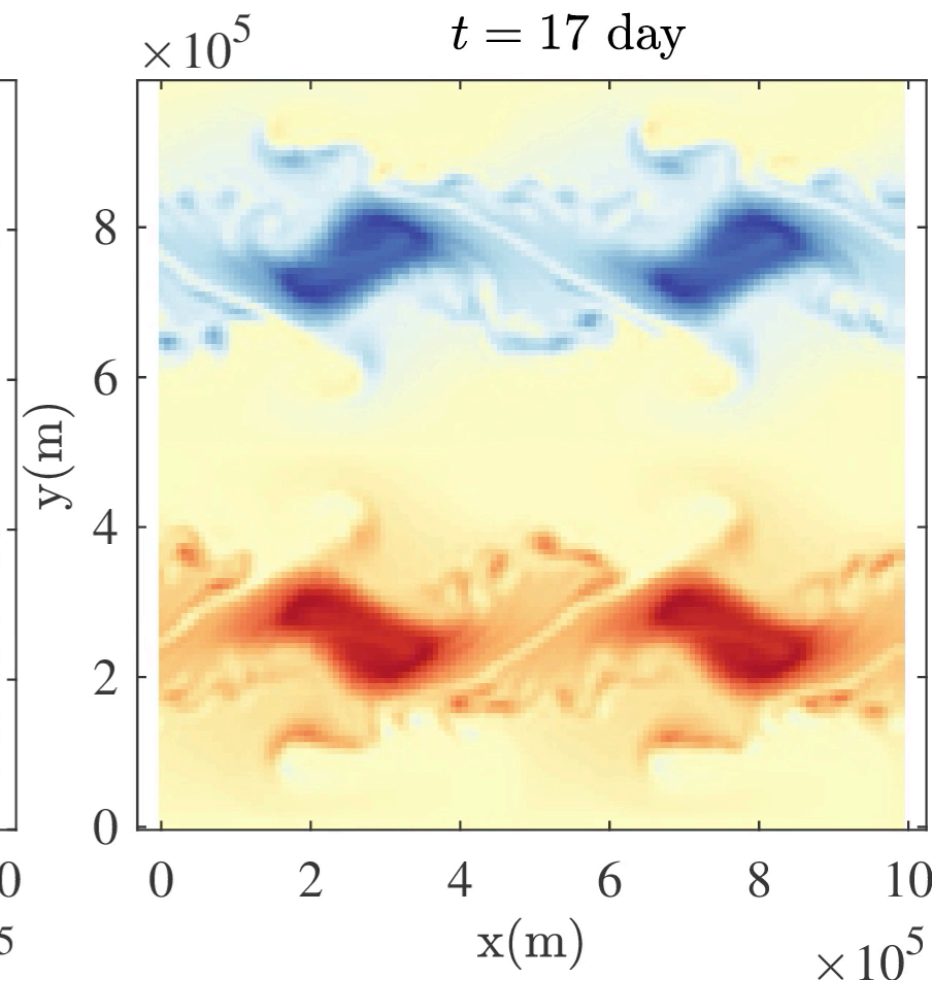
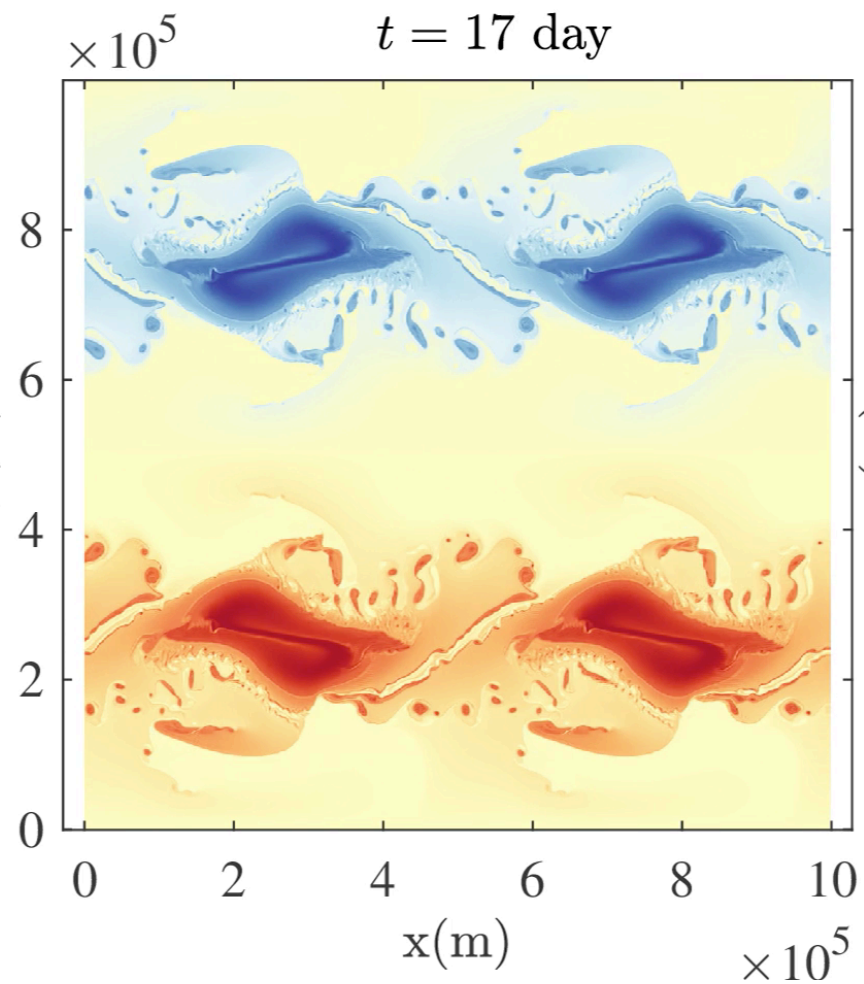
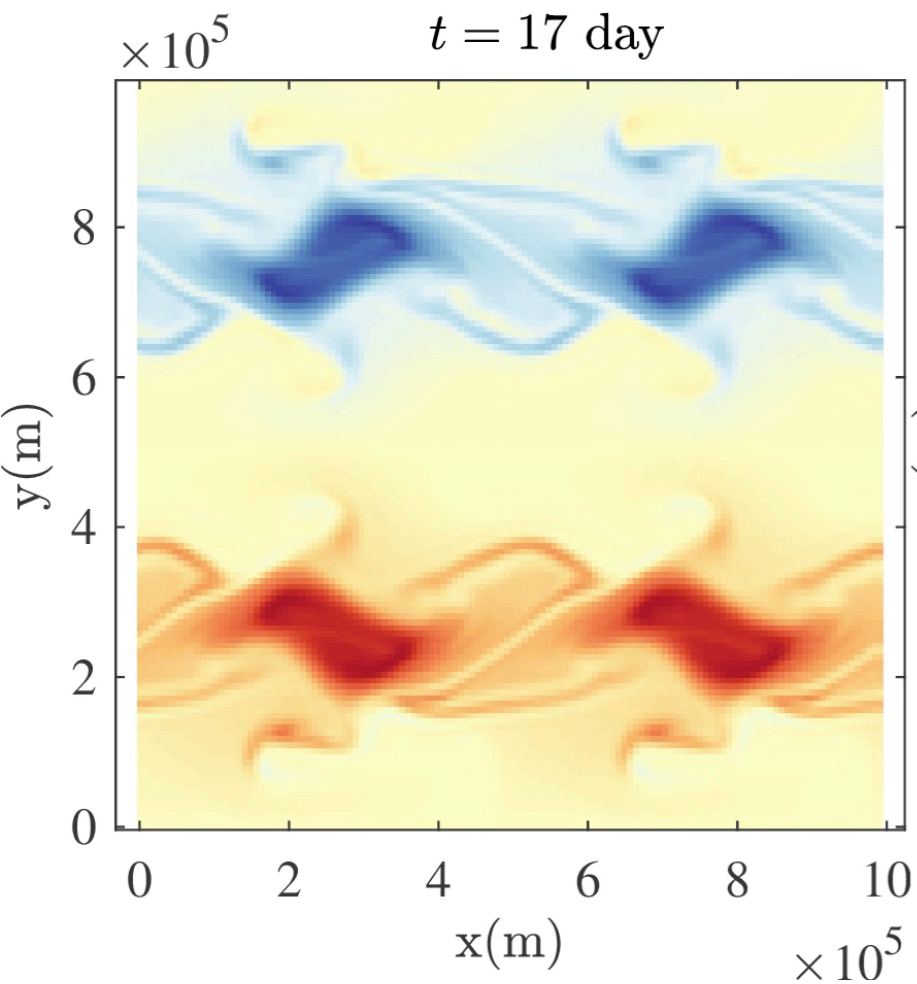


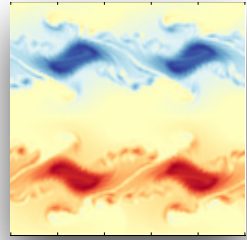
One realization : Stochastic destabilization

Deterministic 128 x 128

Deterministic 1024 x 1024

Location Uncertainty 128 x 128



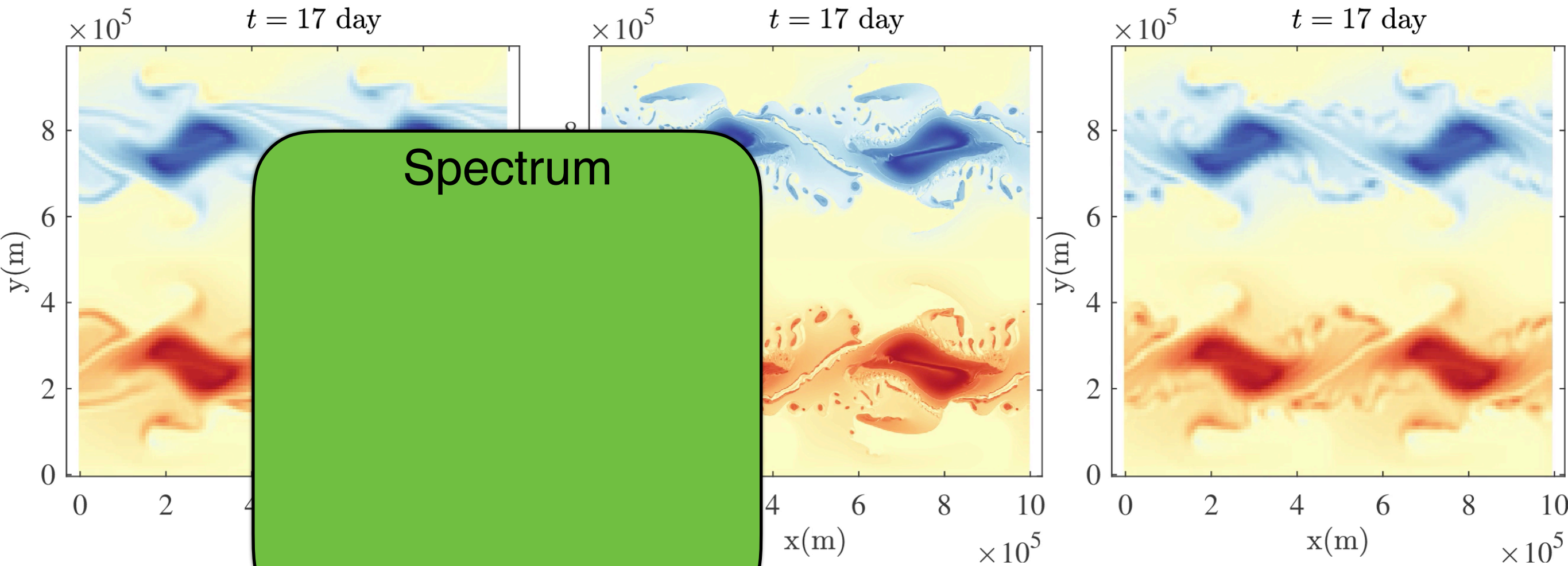


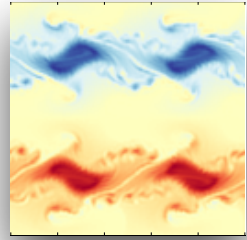
One realization : Stochastic destabilization

Deterministic 128 x 128

Deterministic 1024 x 1024

Location Uncertainty 128 x 128



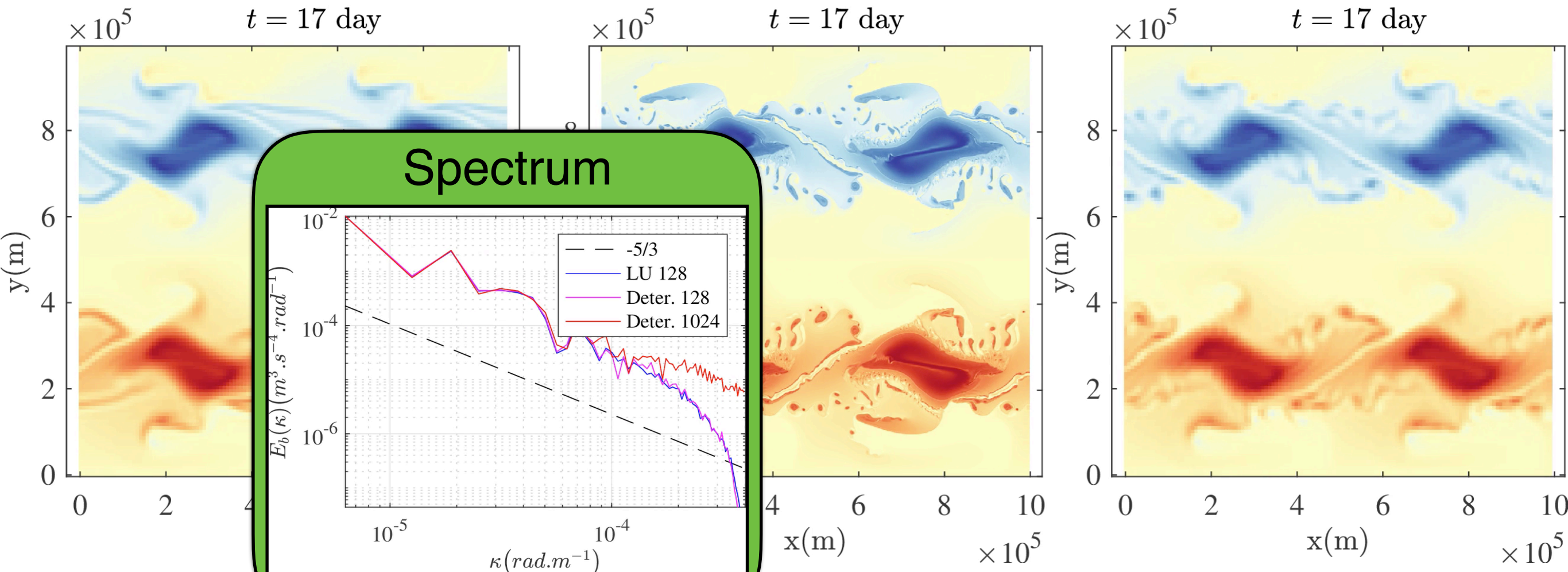


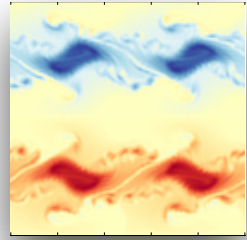
One realization : Stochastic destabilization

Deterministic 128 x 128

Deterministic 1024 x 1024

Location Uncertainty 128 x 128



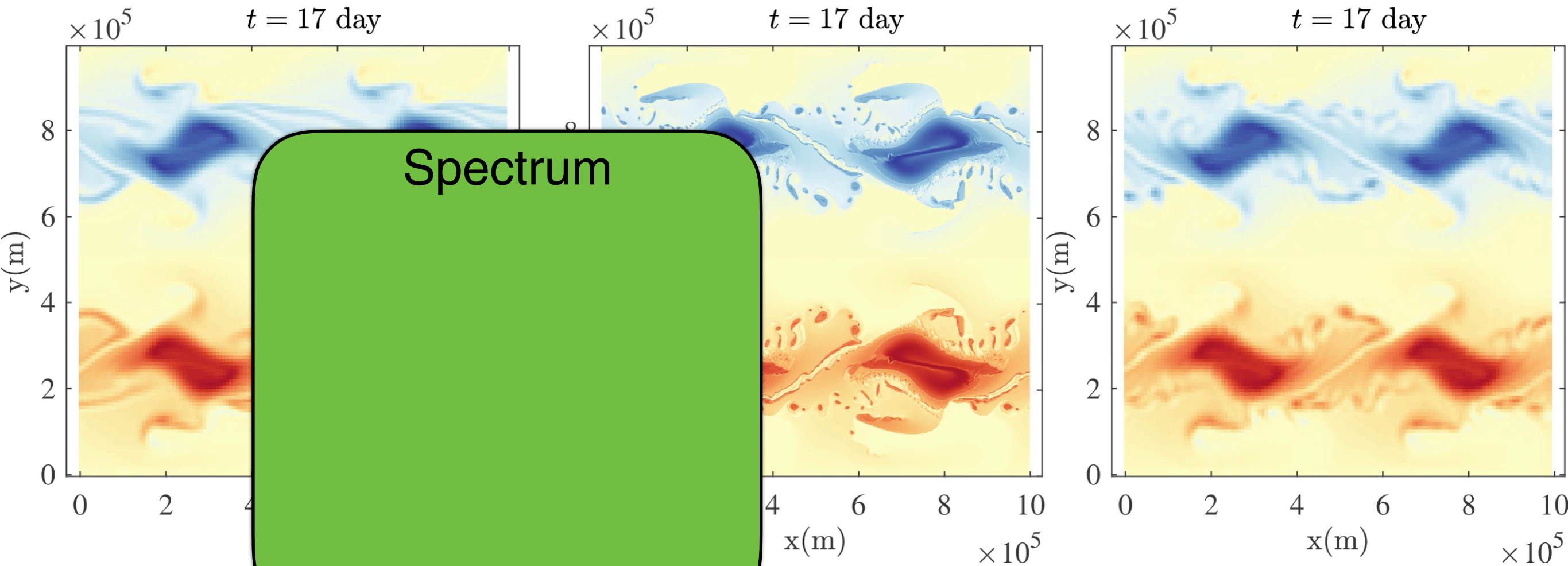


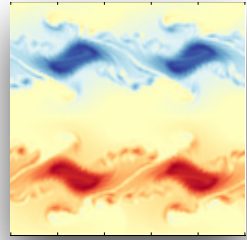
One realization : Stochastic destabilization

Deterministic 128 x 128

Deterministic 1024 x 1024

Location Uncertainty 128 x 128



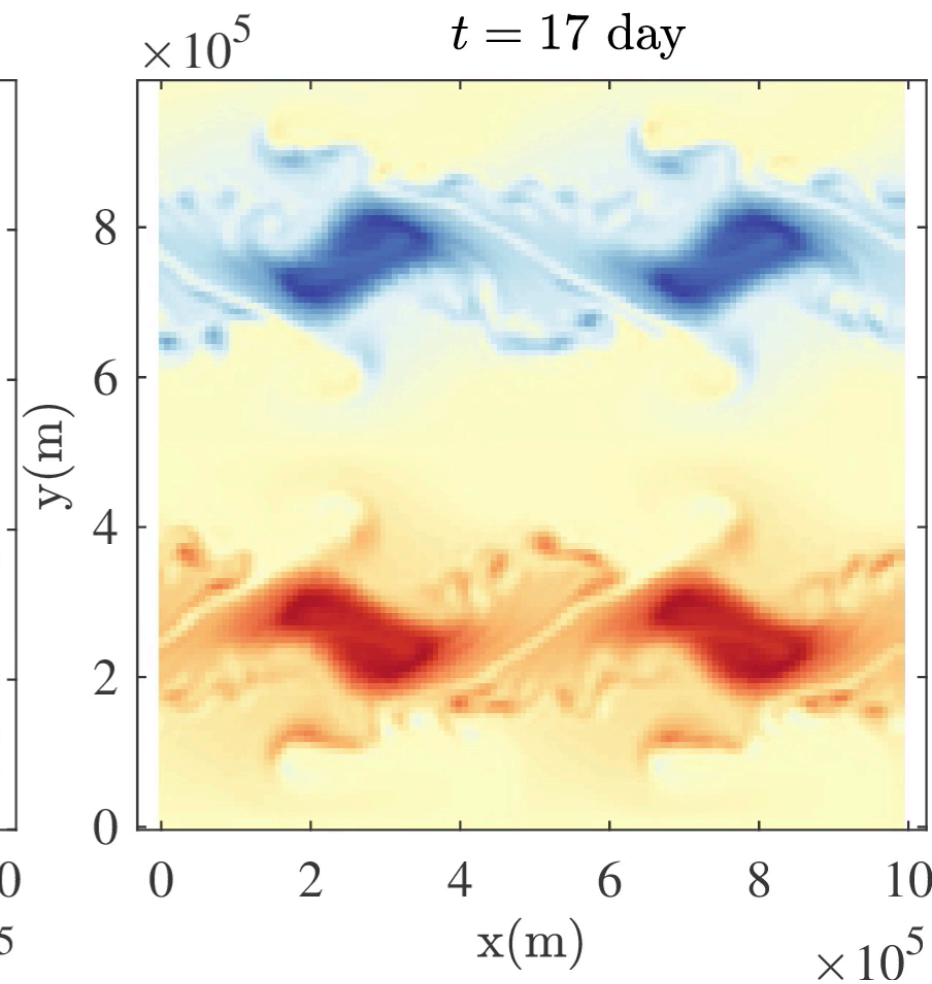
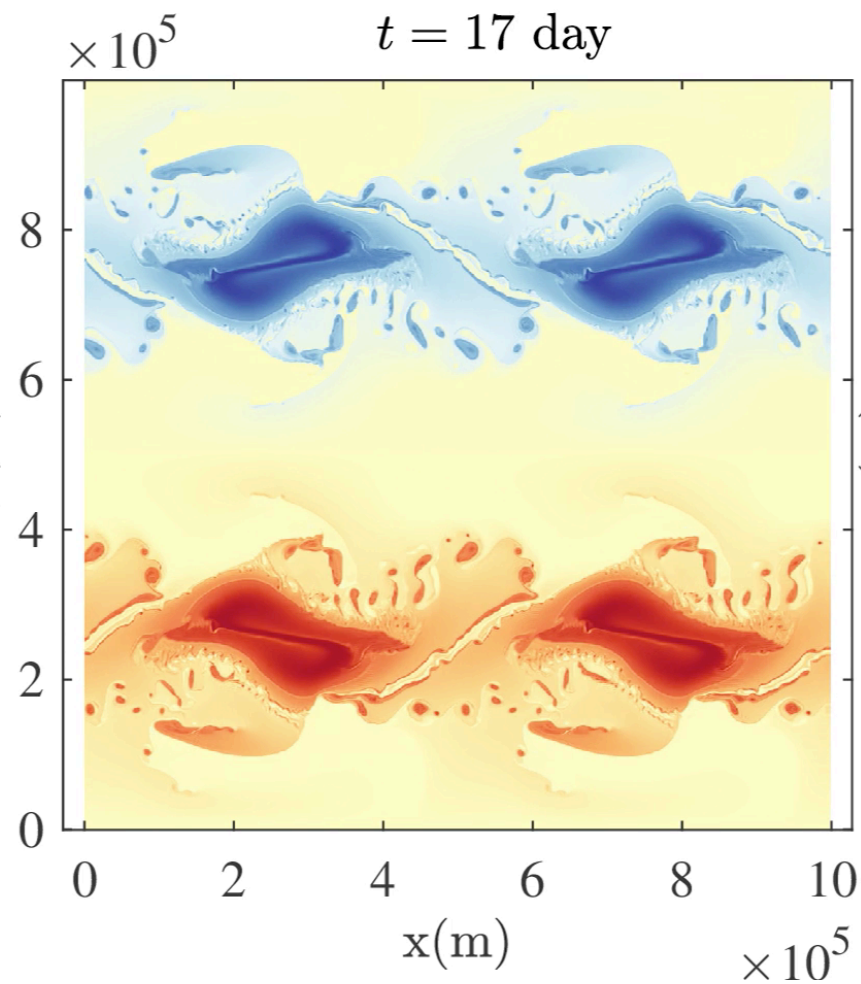
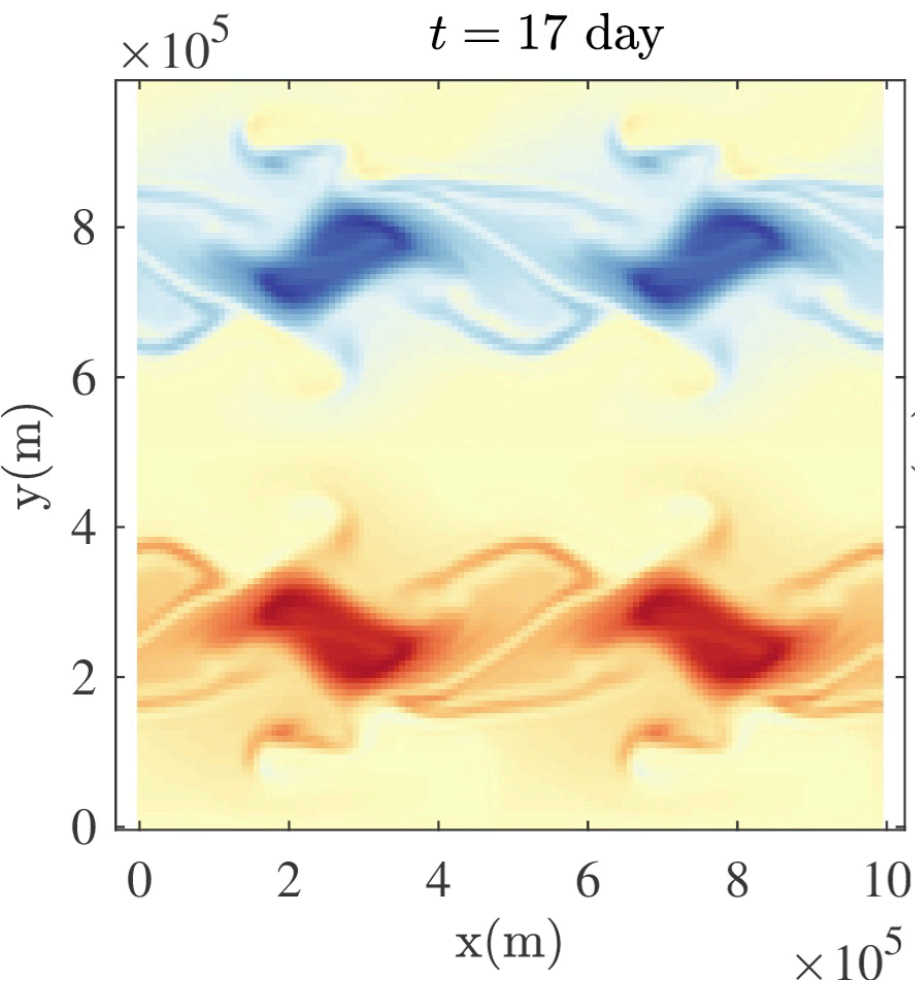


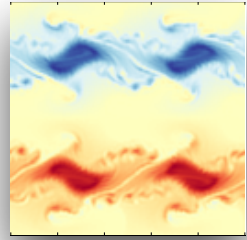
One realization : Stochastic destabilization

Deterministic 128 x 128

Deterministic 1024 x 1024

Location Uncertainty 128 x 128



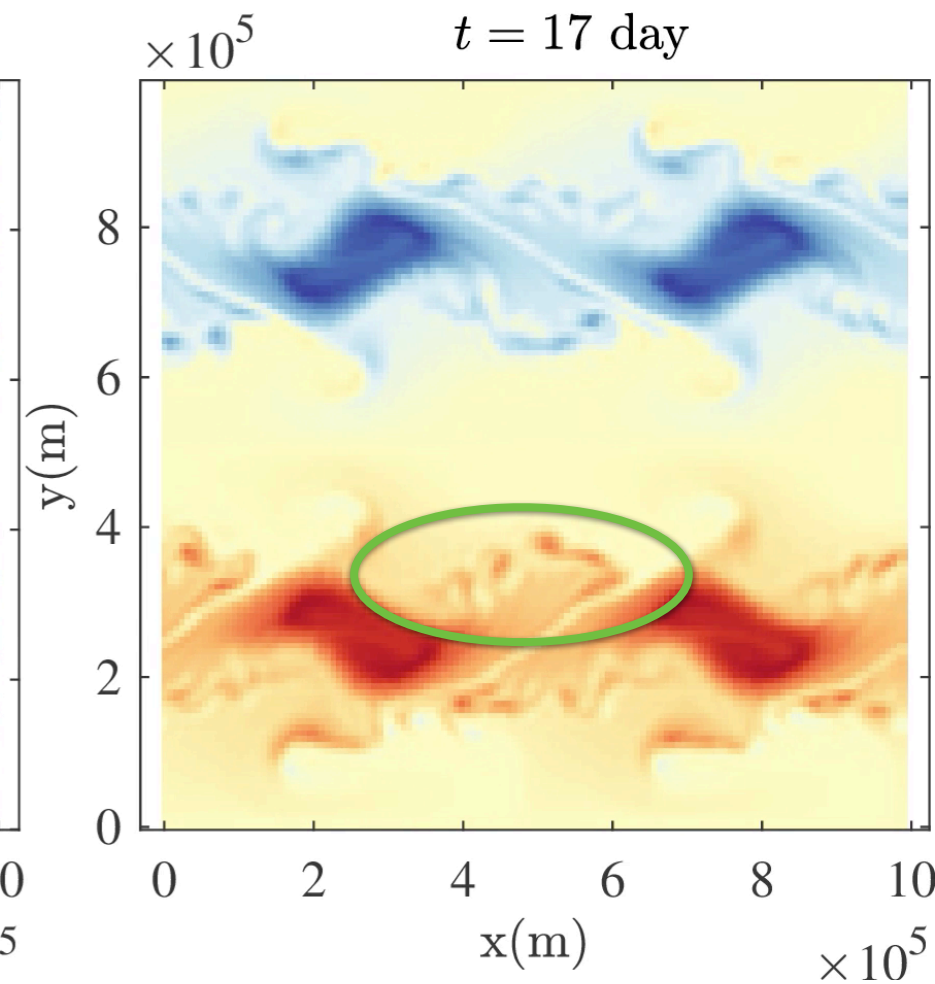
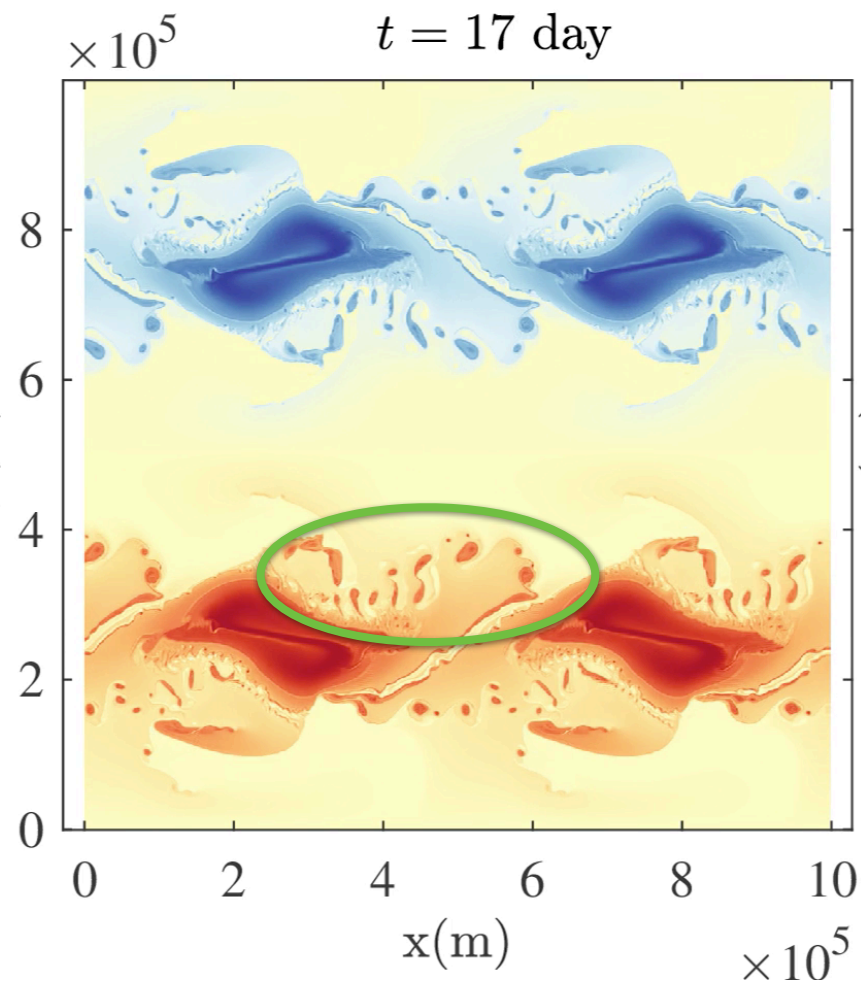
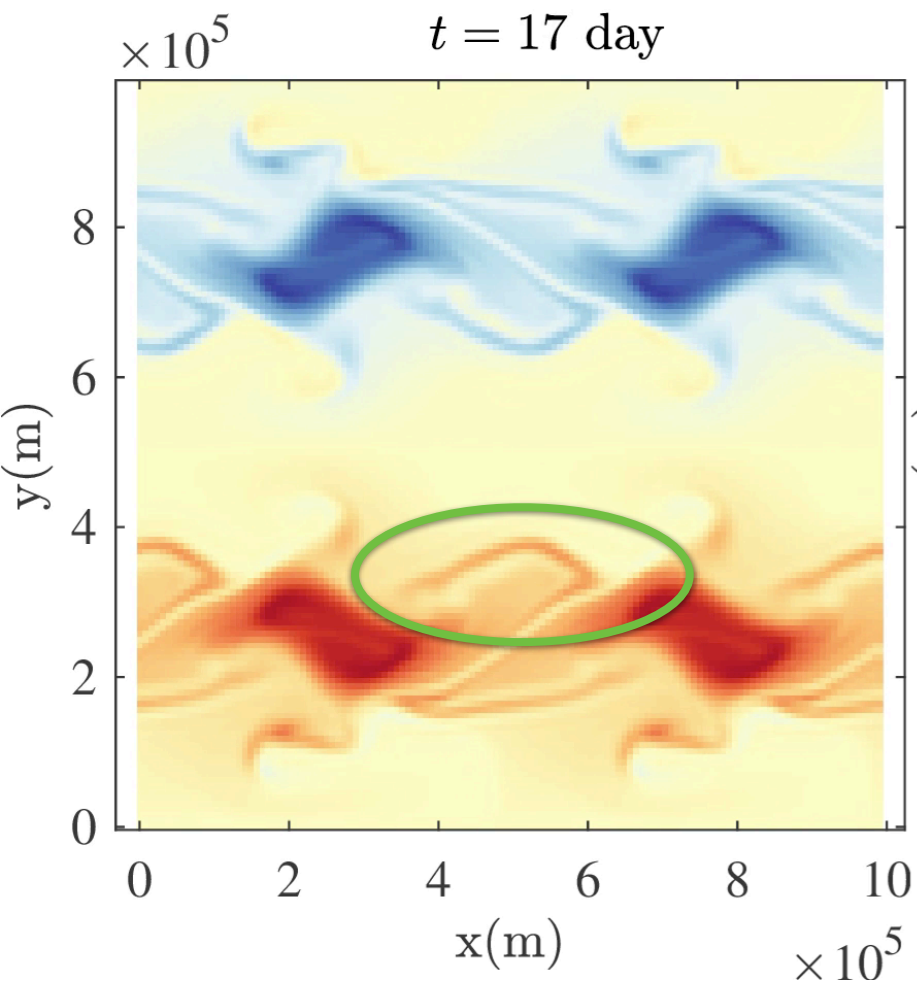


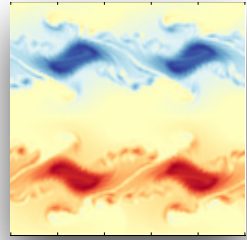
One realization : Stochastic destabilization

Deterministic 128 x 128

Deterministic 1024 x 1024

Location Uncertainty 128 x 128



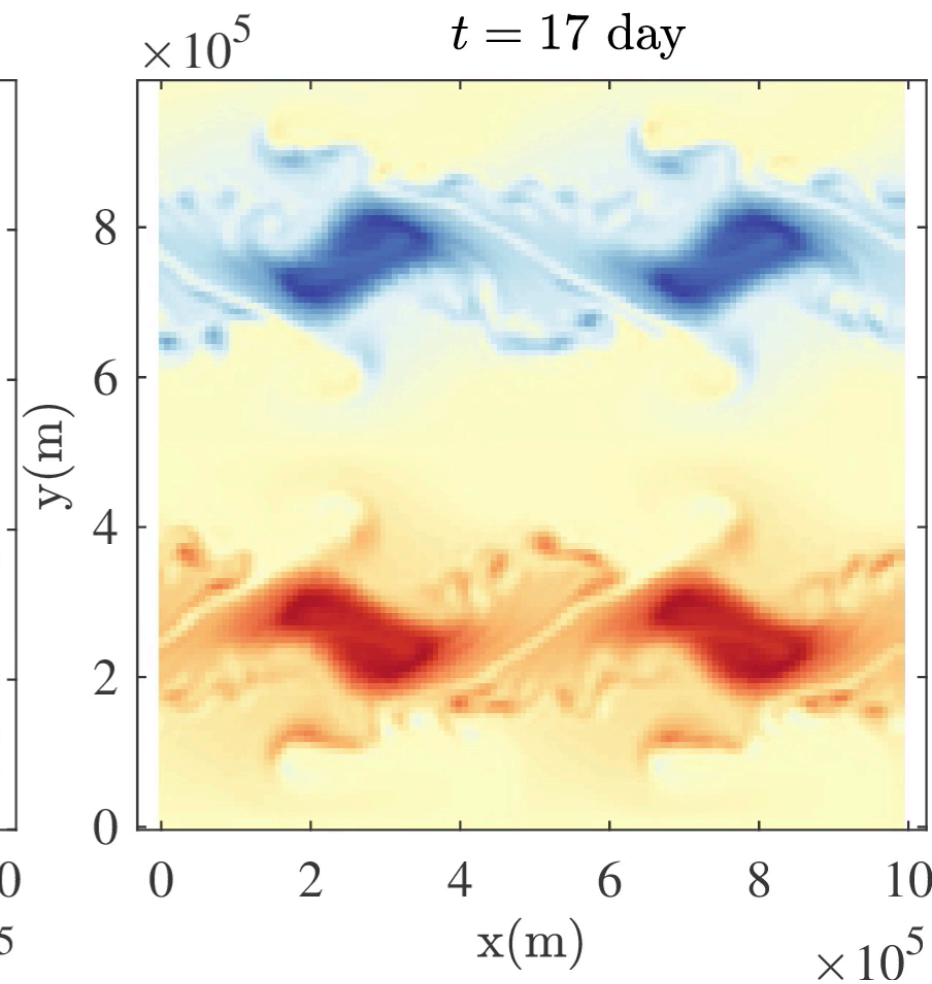
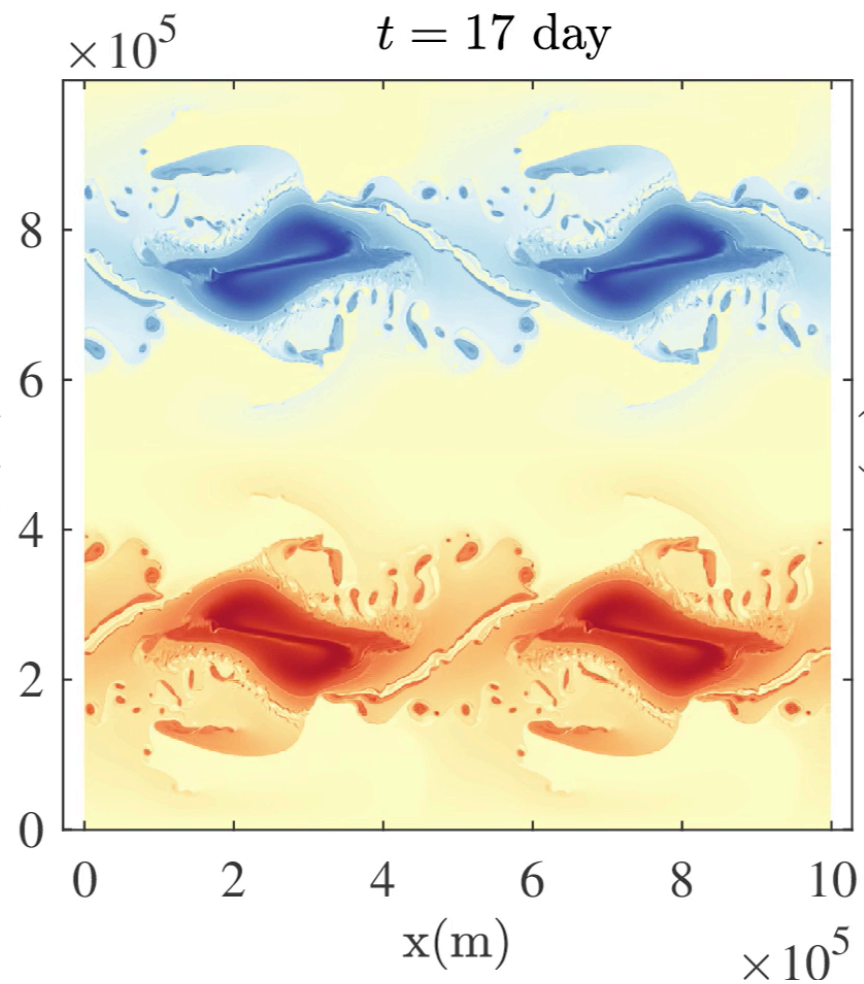
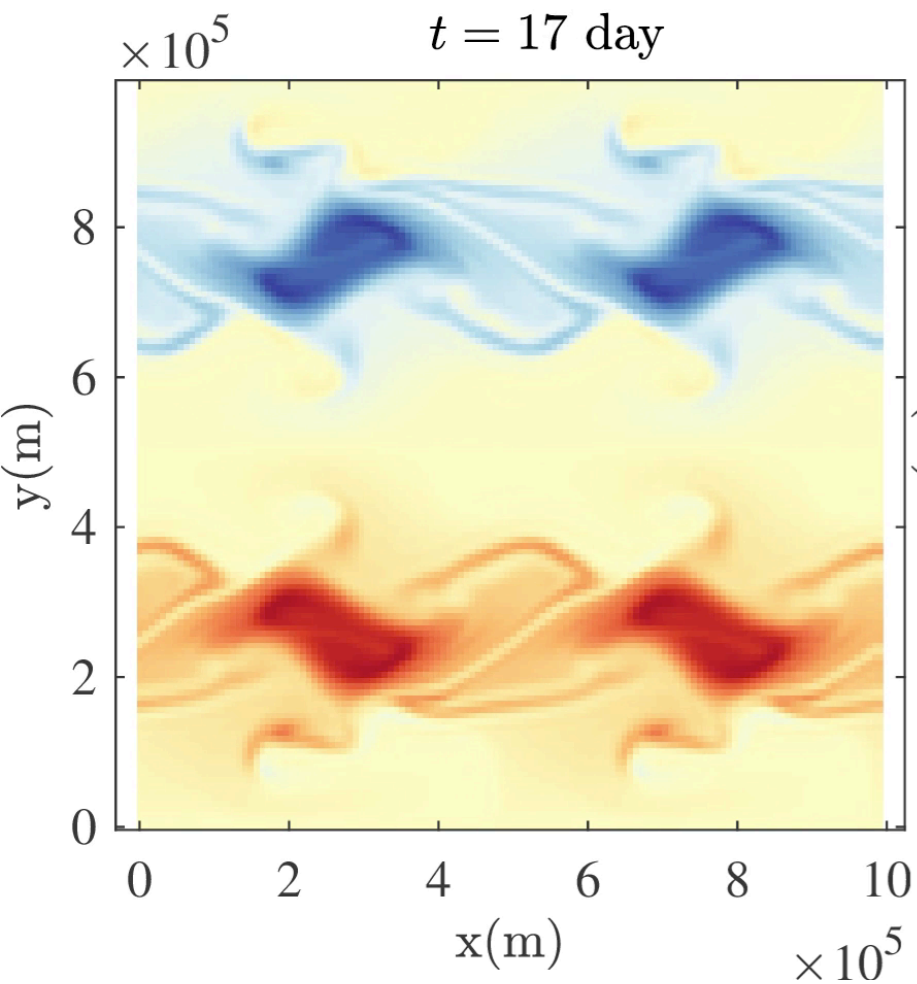


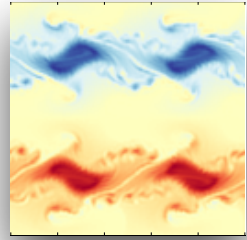
One realization : Stochastic destabilization

Deterministic 128 x 128

Deterministic 1024 x 1024

Location Uncertainty 128 x 128



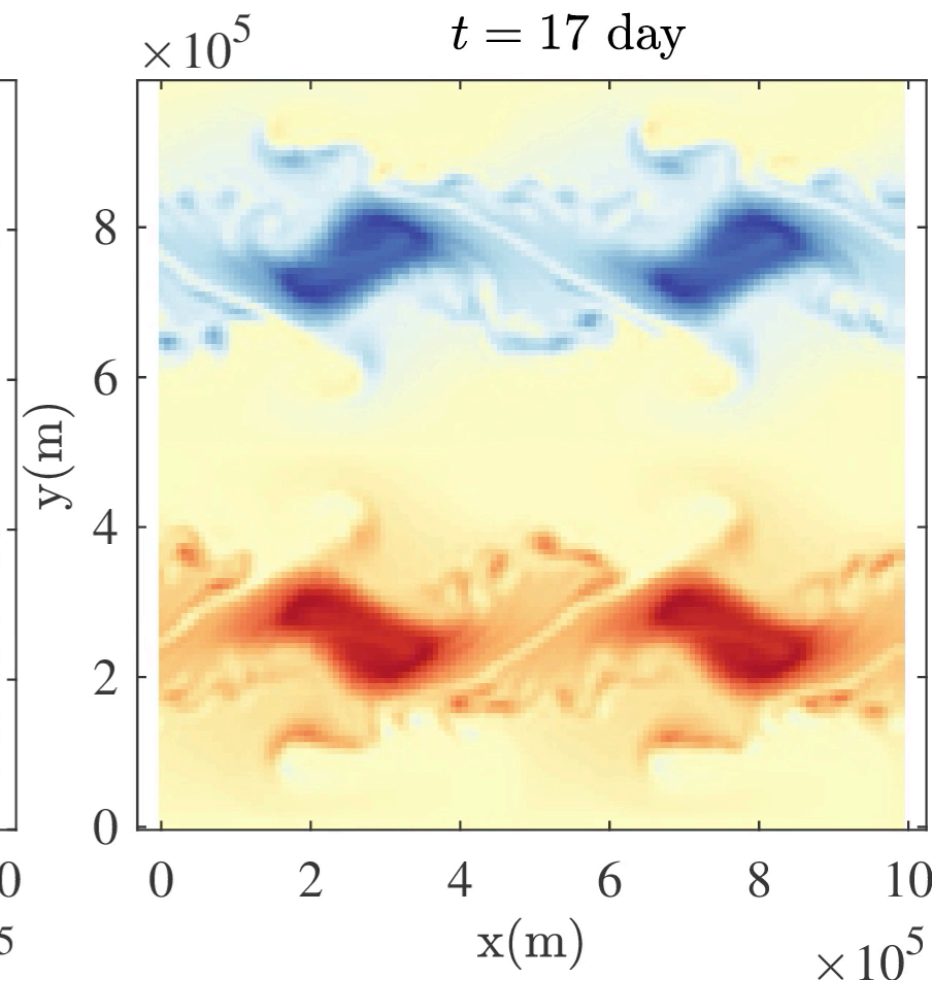
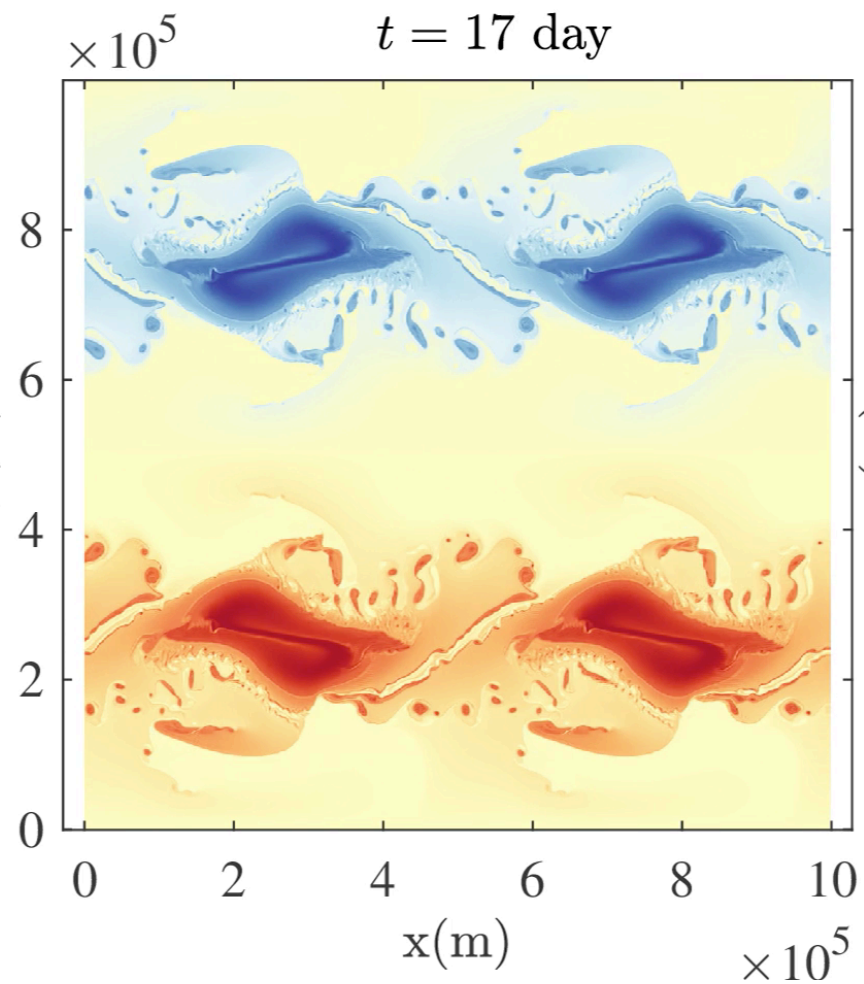
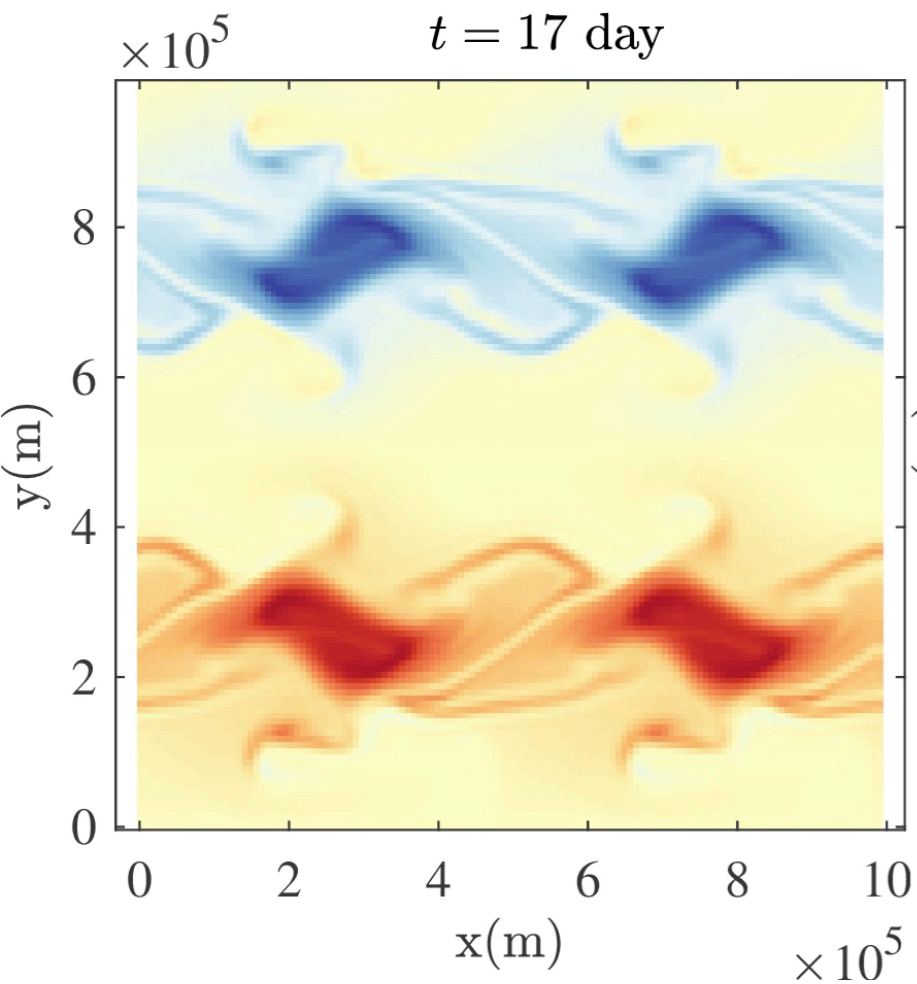


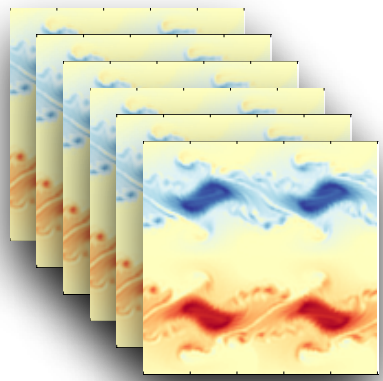
One realization : Stochastic destabilization

Deterministic 128 x 128

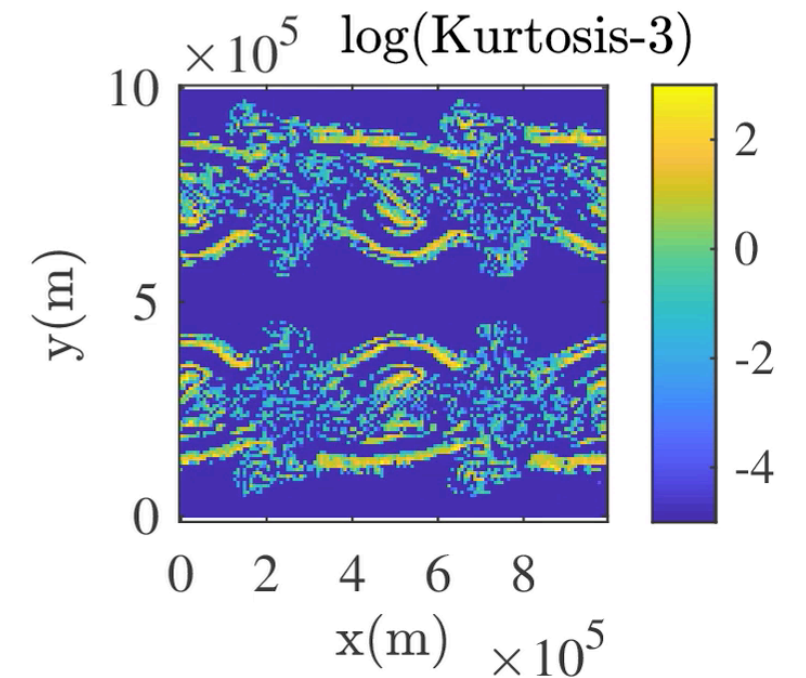
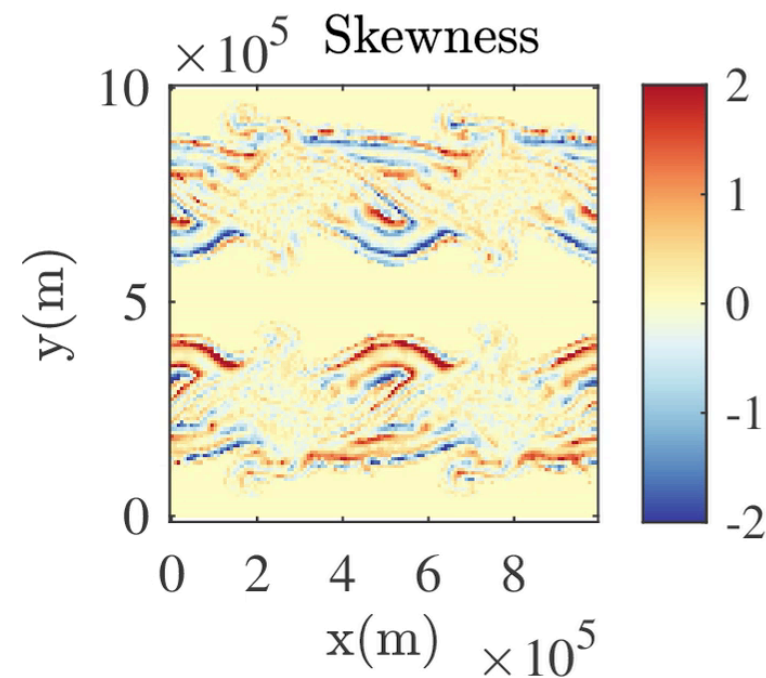
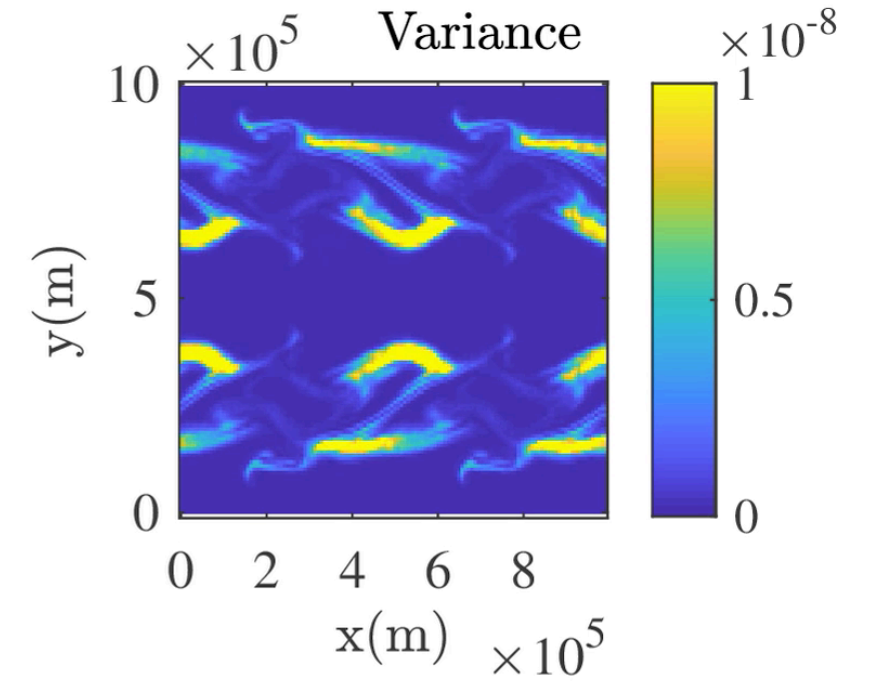
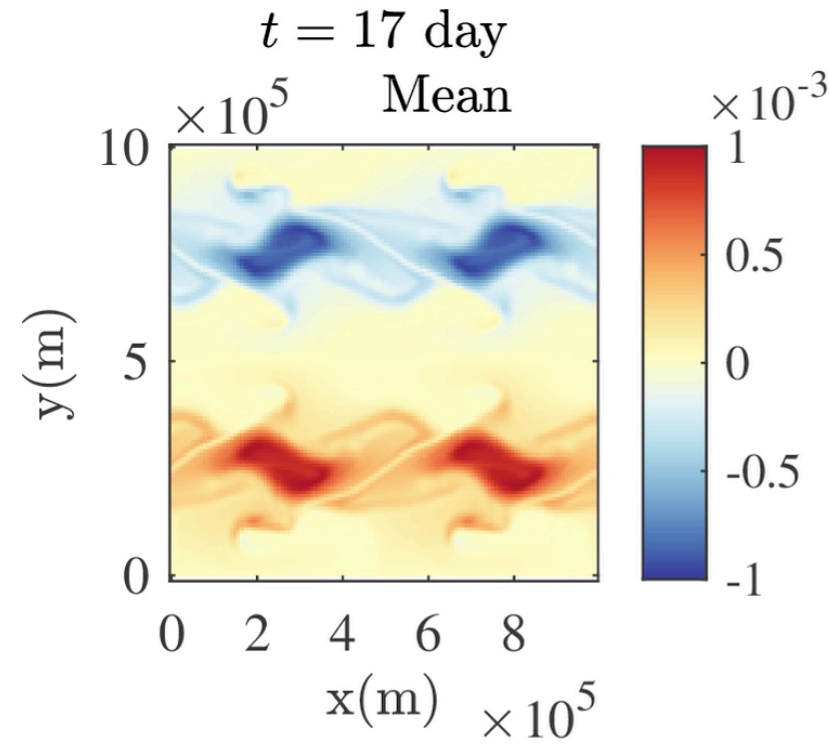
Deterministic 1024 x 1024

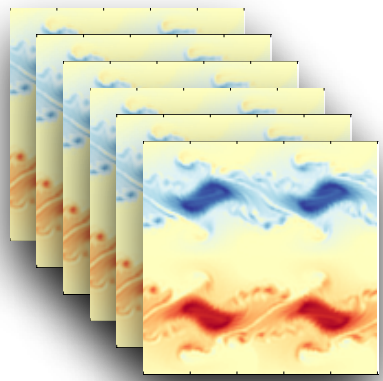
Location Uncertainty 128 x 128



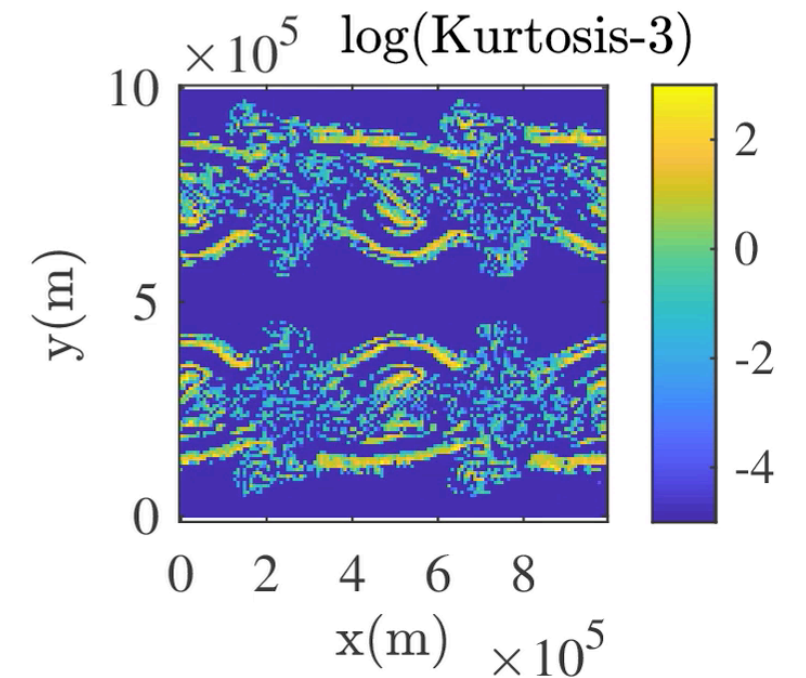
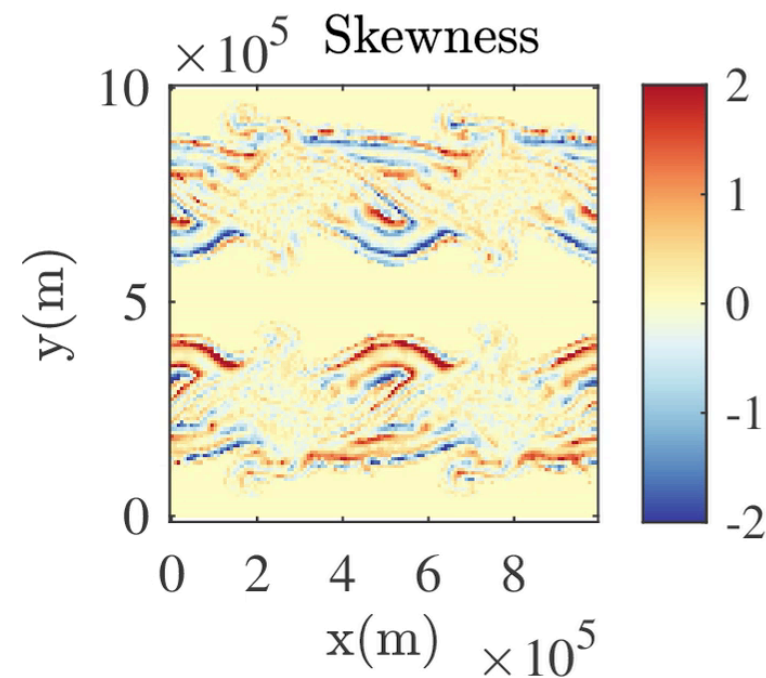
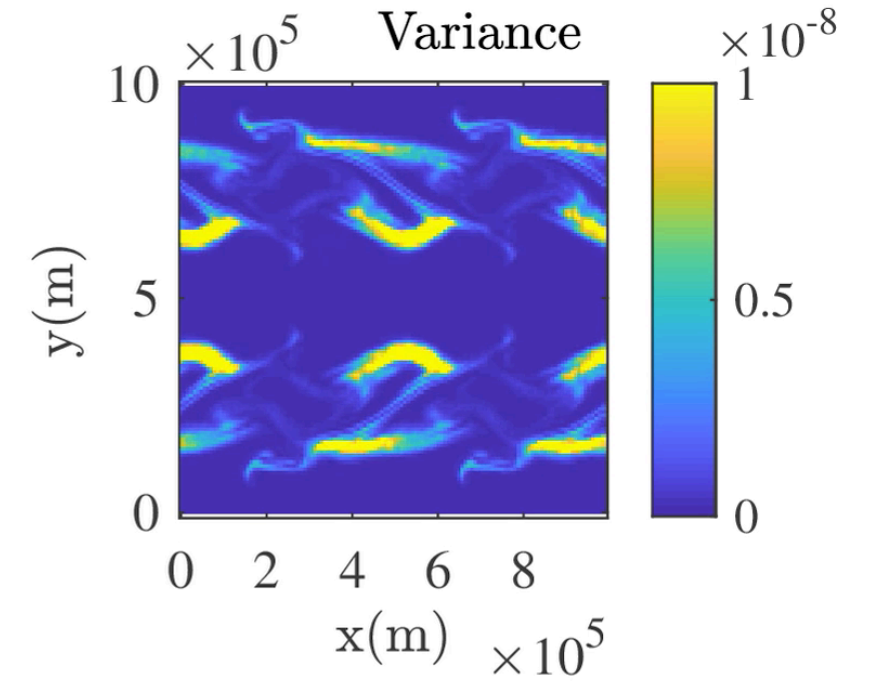
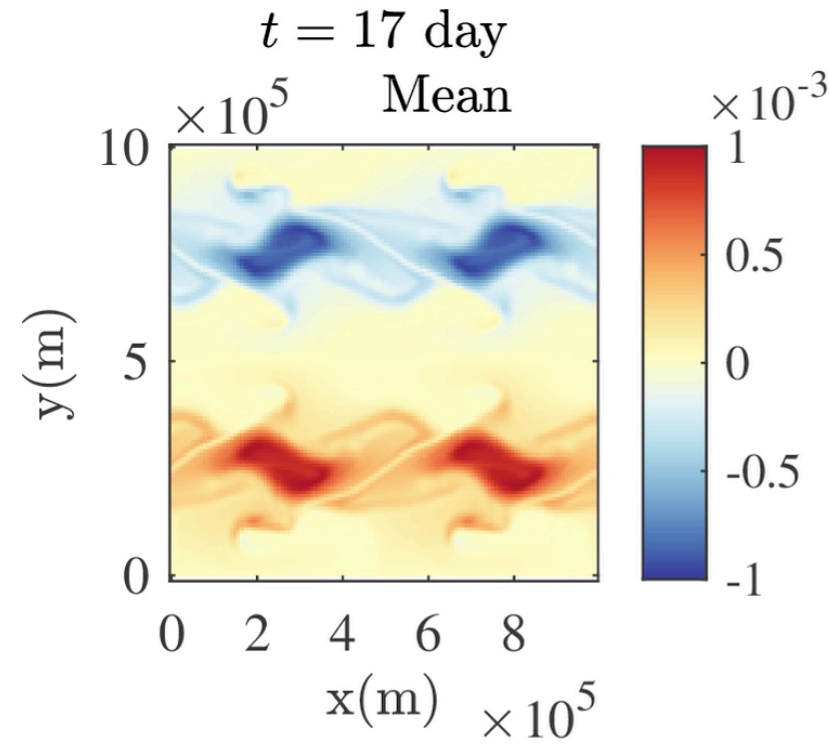


Ensemble :
random
coherent
structures

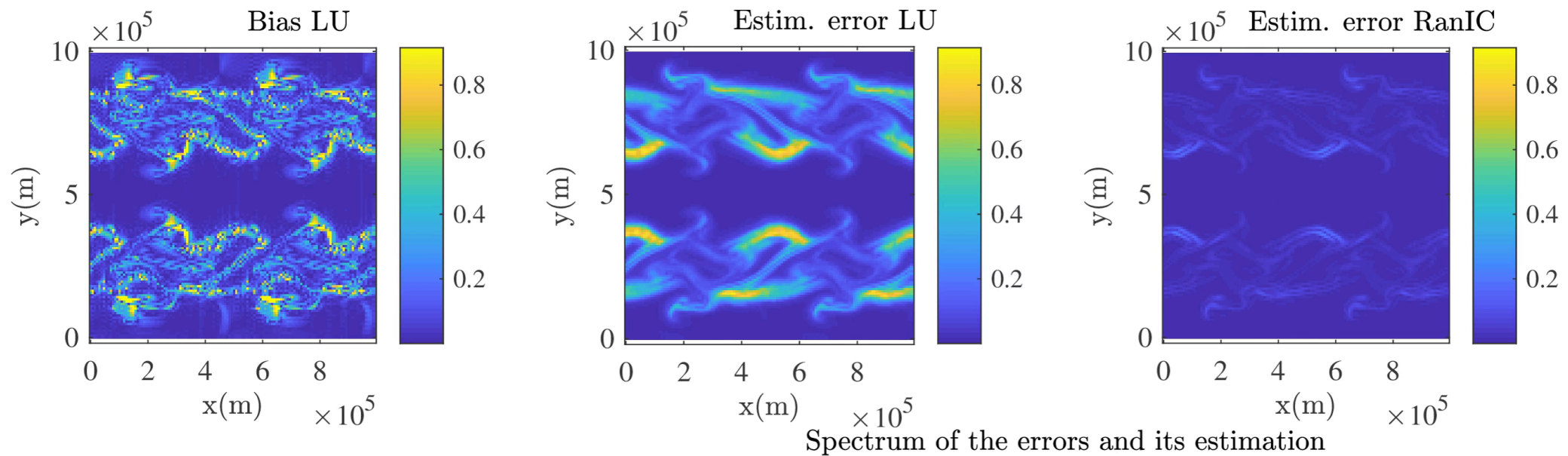
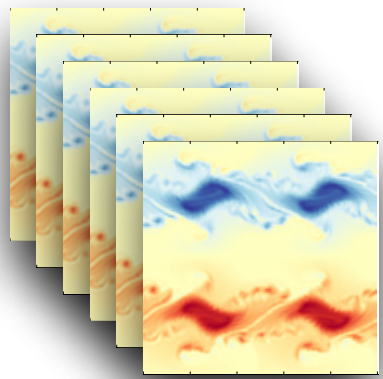




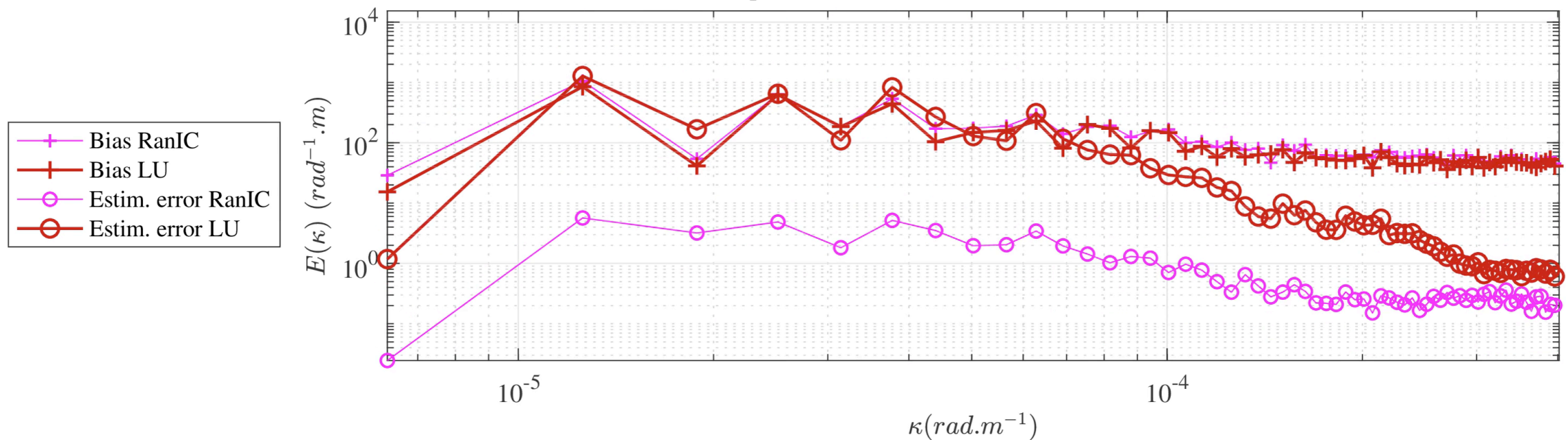
Ensemble :
random
coherent
structures



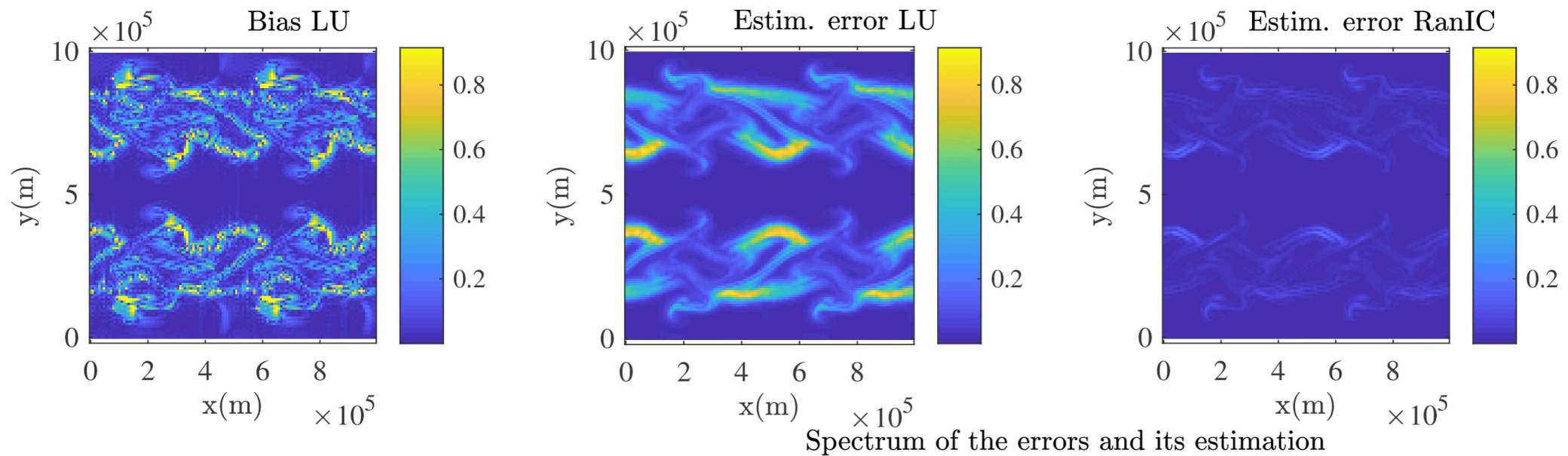
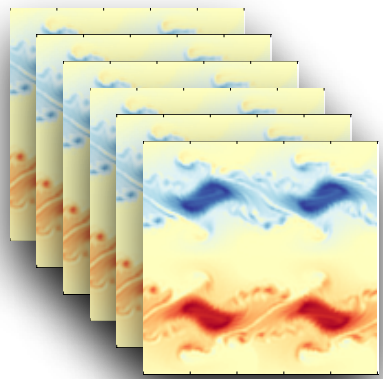
Ensemble : uncertainty quantification



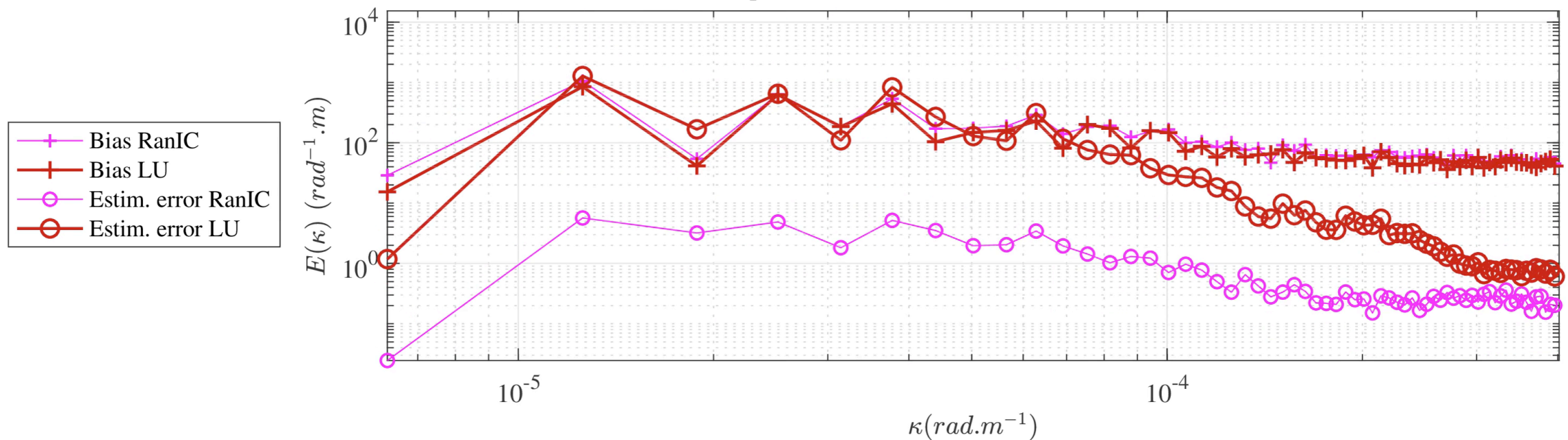
Spectrum of the errors and its estimation



Ensemble : uncertainty quantification



Spectrum of the errors and its estimation



Conclusion

Conclusion

LU models blindly describe unresolved triades

- Conserve energy
- Stabilization / destabilization in Reduced Order Model
- Instabilities triggered, possibly followed by extreme events
- Uncertainty quantification to address filter divergence

Related works, outlooks and application

- Bifurcations (SQG) and attractor (Lorenz 63) exploration
- Comparisons with data-driven parametrisation and SALT (Stochastic Advection by Lie Transport) (Holm and coauthors)
- Parametrization and tests based on higher-order statistics (curvature, energy flux through scales, bispectrum, ...)
- (Surface gravity) wave / turbulence interaction
- **Data assimilation (DA)** :
 - **Filtering / smoothing**
 - **EnKF with LU model as a R&D tool** (for e.g. airplanes, drones)
 - **PF with reduced LU model for real-time monitoring and flow control** (for e.g. pollutant dispersion monitoring, drag and damage reduction in e.g. wind turbines)
 - Girsanov theorem for MLE and Bayesian estimations with e.g. satellite images