



Physico-chemical, biochemical and nutritional characterisation of 42 organic wastes and residues from France

Henry Fisgativa, Cyril Marcilhac, Romain Girault, Marie-Line Daumer, Anne Trémier, Patrick Dabert, Fabrice Béline

► To cite this version:

Henry Fisgativa, Cyril Marcilhac, Romain Girault, Marie-Line Daumer, Anne Trémier, et al.. Physico-chemical, biochemical and nutritional characterisation of 42 organic wastes and residues from France. Data in Brief, 2018, 19, pp.1953-1962. 10.1016/j.dib.2018.06.050 . hal-01890922

HAL Id: hal-01890922

<https://hal.science/hal-01890922>

Submitted on 9 Oct 2018

HAL is a multi-disciplinary open access archive for the deposit and dissemination of scientific research documents, whether they are published or not. The documents may come from teaching and research institutions in France or abroad, or from public or private research centers.

L'archive ouverte pluridisciplinaire **HAL**, est destinée au dépôt et à la diffusion de documents scientifiques de niveau recherche, publiés ou non, émanant des établissements d'enseignement et de recherche français ou étrangers, des laboratoires publics ou privés.



ELSEVIER

Contents lists available at ScienceDirect

Data in Brief

journal homepage: www.elsevier.com/locate/dib

Data Article

Physico-chemical, biochemical and nutritional characterisation of 42 organic wastes and residues from France

Henry Fisgativa^a, Cyril Marcihac^a, Romain Girault^a,
Marie-Line Daumer^a, Anne Trémier^a, Patrick Dabert^a,
Fabrice Béline^{a,b,*}

^a Irstea, UR GERE, 17 av. de Cucillé, CS 64427, F-35044 Rennes, France^b UBL, Université Bretagne Loire, France

ARTICLE INFO

Article history:

Received 11 June 2018

Received in revised form

15 June 2018

Accepted 18 June 2018

Available online 22 June 2018

ABSTRACT

The data presented in this article regroup characterisation of organic matter and nutritional composition of 42 organic wastes and residues usually used as substrates for anaerobic digestion. Those wastes have different origins from agro-industrial, agricultural and urban sectors in France including: algae, slaughterhouse waste, fat, food waste, fruits and vegetables residues, green waste, slurry, manure, wastewater treatment plant sludge and agricultural residues. The properties of organic matter are distinguished between global parameters (pH, total solids, volatile solids, COD and BMP), organic matter fractionation (biochemical and Van Soest) and the main nutrients content (N, P, K, Mg, Ca and S).

© 2018 The Authors. Published by Elsevier Inc. This is an open access article under the CC BY license

(<http://creativecommons.org/licenses/by/4.0/>).

Specifications Table

Subject area	Chemistry, Environmental Engineering
More specific subject area	Organic waste and residues characterisation
Type of data	Tables, tri-plot graphics, hierarchical clustering classifications

* Corresponding author at: Irstea, UR GERE, 17 av. de Cucillé, CS 64427, F-35044 Rennes, France.

E-mail address: fabrice.beline@irstea.fr (F. Béline).

How data was acquired	<i>Data was acquired using classical physico-chemical analyses and instruments including: pH probe, oven drying, furnace calcination, mineralisation, titration, ionic and gas chromatography, NMR</i>
Data format	<i>Raw data, statistical treatment</i>
Experimental factors	<i>After collection, each sample was stored at -20°C until analyses. Frozen solid wastes were ground to obtain a homogenous sample. For nutrients analyses, a water extraction was performed on samples to obtain extracted phase and liquid samples were centrifuged in order to use the dissolved phase</i>
Experimental features	<i>Large waste and substrate characterisation with the aim to predict anaerobic digestion behaviour and digestate properties</i>
Data source location	<i>All organic wastes and residues samples were collected in France, mainly at Rennes ($48^{\circ}06'53''\text{N}$ $1^{\circ}40'46''\text{W}$), Toulouse ($43^{\circ}36'16''\text{N}$ $1^{\circ}26'38''\text{E}$) and Montoldre ($46^{\circ}20'07''\text{N}$ $3^{\circ}26'50''\text{E}$)</i>
Data accessibility	<i>Data are available in this article</i>

Value of the data

- This data article provides a large characterisation of 42 organic waste and residues from France used for anaerobic digestion process.
- This data article focuses on characteristics useful to design anaerobic digestion and to predict biogas production and digestate characteristics according to substrate incorporation.
- The present data will be useful for comparison with other researches and for future studies in order to make correlations between physico-chemical and biochemical or nutritional characteristics.

1. Data

Table 1 listed the 42 organic waste and residues characterised in this article.

Table 2 shows global characteristics of 42 organic waste and residues including pH, total solids (TS), volatile solids (VS), chemical oxygen demand (COD) and the biochemical methane potential (BMP).

Two kinds of organic matter fractionation data are shown in Table 3. On the one hand, the biochemical fractionation discriminates organic matter into lipids, proteins and carbohydrates and on the other hand the Van Soest fractionation describes water and neutral detergent soluble organic matter (SOL), hemicellulose-like fractions (HEM), cellulose-like fractions (CEL), lignin-like fractions (LIG).

Fig. 1 shows tri-plots graphics of both methods results which help to identify the global fractionation data of each studied waste.

Table 4 shows data of nitrogen, phosphorus, potassium, magnesium, calcium and sulphur of 42 organic waste and residues expressed on wet weight basis (WW). These measurements were performed on the extracted or dissolved phases depending of total solids content of waste.

Figs. 2, 3 and 4 show hierarchical clustering classifications performed using software R 3.4.3 (cluster and FactoMineR packages). All characteristics values units were expressed on total solids basis (g.kgTS^{-1} or $\text{NLCH}_4.\text{kgTS}^{-1}$), excepted for TS (g.kgWW^{-1}) and pH (pH units).

Dendrogram obtained from all characteristics (Fig. 2) shows two main classes depending on total solids content (liquid versus solid substrate). When the statistical analysis is performed only on BMP values (Fig. 3), substrates with high BMP content (mainly high fat content substrates) are classified separately of low BMP content substrates. Latter, among low BMP content substrates, a classification between very low BMP (average of $227 \text{ NLCH}_4.\text{kgTS}^{-1}$) corresponding mainly to substrates already

Table 1

Organic wastes and residues number, name and acronym.

#	Substrate	Acronym
1	Seaweed	SW1
2	Freshwater Seaweed	SW2
3	Cattle Blood 1	Blood1
4	Cattle Blood 2	Blood2
5	Pig bristle	PB
6	Pig mucus	PM
7	Meat waste	MW
8	Sieving refusal 1	SR1
9	Sieving refusal 2	SR2
10	Slaughterhouse greases 1	SG1
11	Slaughterhouse greases 2	SG2
12	Slaughterhouse greases 3	SG3
13	Slaughterhouse greases 4	SG4
14	Municipal WWTP ^a grease 1	MG1
15	Municipal WWTP grease 2	MG2
16	Municipal WWTP primary sludge	MPS
17	Municipal WWTP secondary sludge 1	MSS1
18	Municipal WWTP secondary sludge 2	MSS2
19	Municipal WWTP secondary sludge 3	MSS3
20	Municipal WWTP secondary sludge 4	MSS4
21	Municipal WWTP secondary sludge 5	MSS5
22	Municipal WWTP secondary sludge 6	MSS6
23	Municipal WWTP secondary sludge 7	MSS7
24	Slaughterhouse WWTP secondary sludge	SSS
25	Dairy WWTP secondary sludge	DSS
26	Stercoral matter	SM
27	Cattle Manure 1	M1
28	Cattle Manure 2	M2
29	Cattle slurry	CS
30	Pig slurry 1	Slurry1
31	Pig slurry 2	Slurry2
32	Pig slurry 3	Slurry3
33	Wheat straw	Straw
34	Food waste 1	FW1
35	Food waste 2	FW2
36	Green waste 1	GW1
37	Green waste 2	GW2
38	Apple	Apple
39	Carrot 1	Carrot1
40	Carrot 2	Carrot2
41	Shallots pulps	Shallot
42	Onion pulps	Onion

^a WWTP: Wastewater treatment plant.

degraded (slurry, sludge, ...) and average BMP (average of $462 \text{ NLCH}_4.\text{kgTS}^{-1}$) corresponding to raw substrates. Finally, the analysis performed on NPK characteristics (Fig. 4) shows initial first stage of classification between substrates with high nutrient contents (mainly animal residues, sewage sludge and slurry) and those with low nutrient contents (mainly high carbohydrate content substrates). Latter, among high nutrient content substrates, a classification between high nitrogen content substrates (as blood), high K content substrates (as slurry) and high P content substrates (as sewage sludge) may be assessed.

Table 2
Physicochemical characteristics of 42 waste and residues on wet weight basis.

#	Substrate	pH –	TS gTS.kgWW ^{–1}	VS gVS.kgWW ^{–1a}	COD gO ₂ .kgWW ^{–1}	BMP NLCH ₄ .kgWW ^{–1}
1	SW1	–	200.9	120.2	158.0	16.0
2	SW2	–	65.3	51.3	78.6	15.5
3	Blood1	7.4	155.3	139.9	211.8	67.3
4	Blood2	–	155.8	145.1	205.5	65.8
5	PB	–	285.5	278.4	404.7	77.2
6	PM	–	190.5	169.1	285.4	98.2
7	MW	–	330.3	293.9	646.7	256.0
8	SR1	–	176.3	161.6	277.0	79.6
9	SR2	–	328.6	310.8	499.2	169.8
10	SG1	7.3	237.7	231.6	754.9	200.5
11	SG2	–	557.1	552.6	1329.3	499.4
12	SG3	6.2	361.3	350.0	817.0	354.0
13	SG4	5.3	141.8	123.9	296.6	112.2
14	MG1	5.5	14.0	12.7	32.6	16.9
15	MG2	6.8	47.6	36.3	96.9	29.3
16	MPS	6.1	52.8	44.6	72.3	–
17	MSS1	6.5	57.0	45.8	75.2	11.7
18	MSS2	5.6	42.0	34.4	45.0	11.7
19	MSS3	6.9	60.3	47.8	75.4	12.4
20	MSS4	6.5	61.6	41.3	79.8	8.5
21	MSS5	7.0	69.2	40.0	75.5	11.3
22	MSS6	6.8	45.3	31.2	47.6	–
23	MSS7	6.8	5.9	4.2	8.5	1.2
24	SSS	7.4	20.9	12.9	18.9	4.7
25	DSS	7.4	9.3	4.5	6.6	1.7
26	SM	–	166.3	155.4	231.1	52.5
27	M1	9.0	276.5	241.2	303.0	89.4
28	M2	–	225.2	204.5	279.1	57.0
29	CS	8.6	106.9	79.2	121.8	18.9
30	Slurry1	7.8	56.8	39.7	57.3	9.3
31	Slurry2	7.6	38.6	25.0	39.9	3.7
32	Slurry3	7.6	73.4	53.3	95.2	25.1
33	Straw	7.5	904.7	870.7	1177.0	294.6
34	FW1	5.8	259.1	219.9	412.0	111.9
35	FW2	–	271.3	257.5	416.3	147.2
36	GW1	6.3	261.4	215.5	344.0	71.5
37	GW2	–	235.1	192.9	307.4	54.3
38	Apple	3.9	109.9	107.1	138.0	48.3
39	Carrot1	5.4	97.1	89.9	125.8	39.3
40	Carrot2	–	177.7	167.2	196.8	55.3
41	Shallot	–	226.7	212.7	254.6	87.9
42	Onion	–	211.5	194.6	228.5	81.1

^a WW – Wet weight.

Table 3

Biochemical and Van Soest fractionation of organic matter of 42 organic waste and residues.

#	Substrate	Biochemical fractionation			Van Soest fractionation			
		Lipids	Proteins	Carbohydrates	SOL ⁺	HEM ⁺	CEL ⁺	LIG ⁺
		%VS	%VS	%VS	%VS	%VS	%VS	%VS
1	SW1	2.9	22.5	74.5	–	–	–	–
2	SW2	2.8	47.7	49.6	–	–	–	–
3	Blood1	7.5	92.5	0.0	98.7	1.0	0.2	0.1
4	Blood2	1.9	98.1	0.0	9.7	79.1	7.6	3.6
5	PB	1.5	93.3	5.1	24.1	14.5	0.4	61.0
6	PM	23.7	76.3	0.0	–	–	–	–
7	MW	58.2	41.8	0.0	83.8	13.7	0.6	2.0
8	SR1	15.4	24.4	60.2	24.7	25.3	30.0	20.0
9	SR2	25.4	37.2	37.4	39.2	24.3	15.6	20.8
10	SG1	78.4	4.8	16.8	89.4	2.5	6.5	1.6
11	SG2	85.1	9.7	5.2	94.7	2.8	1.3	1.2
12	SG3	91.3	7.1	1.6	92.4	5.7	-0.5	2.4
13	SG4	60.3	12.4	27.3	68.4	15.6	9.6	6.3
14	MG1	59.2	8.4	32.5	87.9	5.5	3.6	3.0
15	MG2	22.6	23.5	53.9	–	–	–	–
16	MPS	12.9	0.0	87.1	–	–	–	–
17	MSS1	10.5	58.6	30.9	60.3	27.8	3.1	8.8
18	MSS2	–	–	–	–	–	–	–
19	MSS3	–	–	–	–	–	–	–
20	MSS4	5.1	42.7	52.2	66.8	14.7	6.5	12.0
21	MSS5	7.6	67.4	25.0	–	–	–	–
22	MSS6	–	–	–	–	–	–	–
23	MSS7	4.7	76.2	19.2	79.9	18.1	0.3	1.7
24	SSS	–	–	–	–	–	–	–
25	DSS	11.5	68.9	19.5	58.4	23.1	5.4	13.1
26	SM	12.5	64.8	22.7	36.3	28.1	18.4	17.2
27	M1	10.8	73.0	16.2	70.3	25.1	2.6	2.1
28	M2	9.1	13.5	77.4	21.6	28.6	35.4	14.3
29	CS	8.6	9.9	81.5	23.1	28.3	25.8	22.8
30	Slurry1	4.8	7.5	87.6	–	–	–	–
31	Slurry2	6.6	19.1	74.3	40.6	21.8	21.9	15.6
32	Slurry3	13.9	27.6	58.5	27.1	30.8	23.1	19.0
33	Straw	4.5	32.6	62.9	41.0	19.3	17.3	22.3
34	FW1	8.2	0.0	91.8	–	–	–	–
35	FW2	7.7	2.3	90.0	10.2	34.5	35.2	20.1
36	GW1	26.4	22.6	50.9	51.5	35.9	10.8	1.8
37	GW2	22.2	23.7	54.2	–	–	–	–
38	Apple	11.9	22.2	65.9	35.5	34.2	22.5	7.8
39	Carrot1	6.6	26.5	66.9	–	–	–	–
40	Carrot2	3.3	3.9	92.8	89.6	3.6	1.1	5.7
41	Shallot	15.2	8.2	76.6	88.2	3.1	6.6	2.2
42	Onion	2.7	9.7	87.6	44.3	16.9	33.0	5.7

SOL – water and neutral detergent soluble, HEM – hemicellulose-like, CEL – Cellulose-like, LIG – Lignin-like.

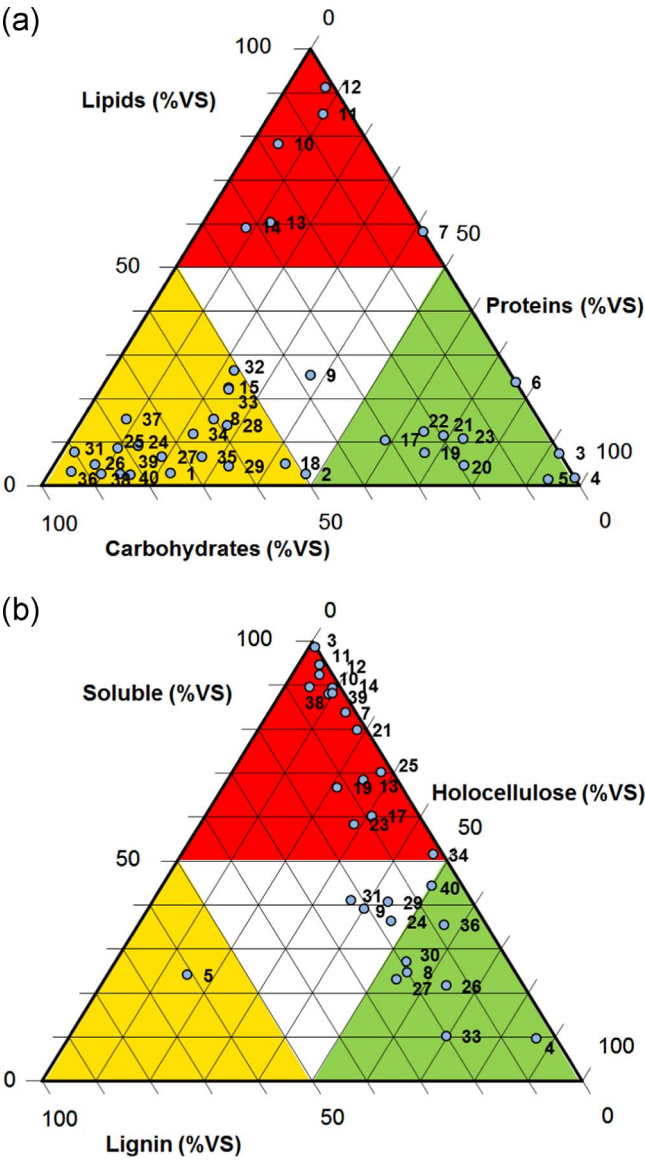


Fig. 1. Tri-plots graphics of (a) biochemical and (b) Van Soest fractionation of organic matter of 42 waste and residues. Number of wastes and substrates are indicated in [Table 1](#). Holocellulose is the sum of hemicellulose-like and cellulose-like fractions.

Table 4

Main nutrients (N, P, K, Mg, Ca and S) content of 42 waste and residues on wet weight basis.

#	Substrate	TKN	NH ₄ ⁺	P	K	Mg	Ca	S
		g.kgWW ⁻¹	g.kgWW ⁻¹	g.kgWW ⁻¹	g.kgWW ⁻¹	g.kgWW ⁻¹	g.kgWW ⁻¹	g.kgWW ⁻¹
1	SW1	4.7	0.3	–	–	–	–	–
2	SW2	3.9	0.1	–	–	–	–	–
3	Blood1	22.2	0.2	0.2	0.5	0.3	0.4	0.9
4	Blood2	23.7	0.6	0.2	0.4	0.0	0.1	1.1
5	PB	41.3	–	1.1	0.4	0.3	1.5	7.4
6	PM	21.2	–	1.3	6.4	0.2	0.1	1.5
7	MW	17.6	–	1.3	1.1	1.1	0.9	1.6
8	SR1	6.4	–	0.9	0.3	0.2	2.0	0.5
9	SR2	17.8	–	0.8	0.5	0.4	2.6	1.7
10	SG1	1.7	0.1	0.3	0.1	0.1	1.9	0.2
11	SG2	9.1	–	0.6	0.3	0.0	0.4	0.8
12	SG3	4.0	0.1	0.3	0.2	0.0	0.5	0.5
13	SG4	2.7	0.2	0.4	0.2	0.1	2.3	0.2
14	MG1	0.2	0.0	0.1	0.1	0.1	0.3	–
15	MG2	1.3	0.1	0.3	0.1	0.1	1.9	–
16	MPS	0.0	0.2	0.5	0.1	0.1	1.0	–
17	MSS1	4.6	0.1	1.9	0.7	0.4	0.9	–
18	MSS2	0.1	–	–	–	–	–	–
19	MSS3	3.6	0.4	1.8	0.5	0.4	1.4	0.5
20	MSS4	4.6	0.1	3.0	0.9	0.3	0.3	0.3
21	MSS5	5.1	0.1	5.2	2.0	0.3	5.3	0.5
22	MSS6	–	0.1	1.8	0.4	0.3	0.9	–
23	MSS7	0.5	0.0	0.1	0.1	0.1	0.1	–
24	SSS	1.5	0.1	0.3	0.2	0.1	0.2	0.1
25	DSS	0.6	0.0	0.5	0.1	0.1	0.5	–
26	SM	3.3	–	0.8	0.8	0.1	0.8	0.2
27	M1	4.6	0.8	1.0	6.6	0.8	2.4	0.6
28	M2	2.6	–	1.4	1.6	0.4	1.2	0.3
29	CS	4.5	2.1	0.7	5.1	0.6	2.1	–
30	Slurry1	4.4	2.6	1.2	2.8	0.8	2.0	0.2
31	Slurry2	4.3	3.0	0.9	2.4	0.5	1.9	–
32	Slurry3	3.2	3.9	1.4	5.1	0.8	1.9	–
33	Straw	3.2	0.0	0.5	6.8	0.5	1.9	0.6
34	FW1	8.0	0.1	2.0	2.7	0.2	9.2	0.8
35	FW2	10.7	0.1	1.0	2.4	0.2	0.5	–
36	GW1	8.1	0.4	0.8	5.0	0.4	2.1	0.6
37	GW2	8.5	0.1	1.9	11.6	1.0	2.8	–
38	Apple	0.7	0.0	0.1	1.1	0.3	0.1	–
39	Carrot1	1.2	0.0	0.3	3.2	0.1	0.4	0.2
40	Carrot2	2.6	–	0.5	2.9	0.3	1.1	0.2
41	Shallot	5.2	–	0.5	3.2	0.3	2.6	0.8
42	Onion	4.1	–	0.4	2.4	0.3	3.9	0.6

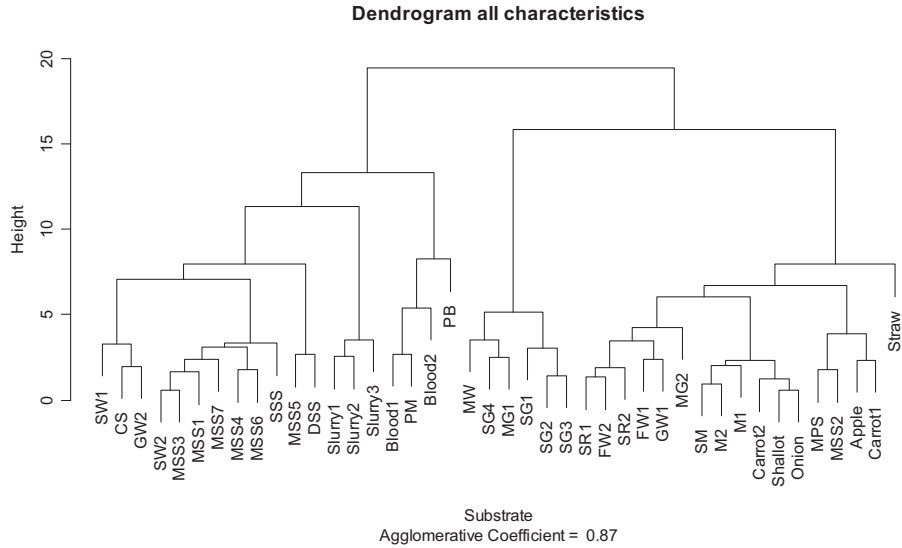


Fig. 2. Hierarchical clustering from all characteristics expressed on total solids basis.

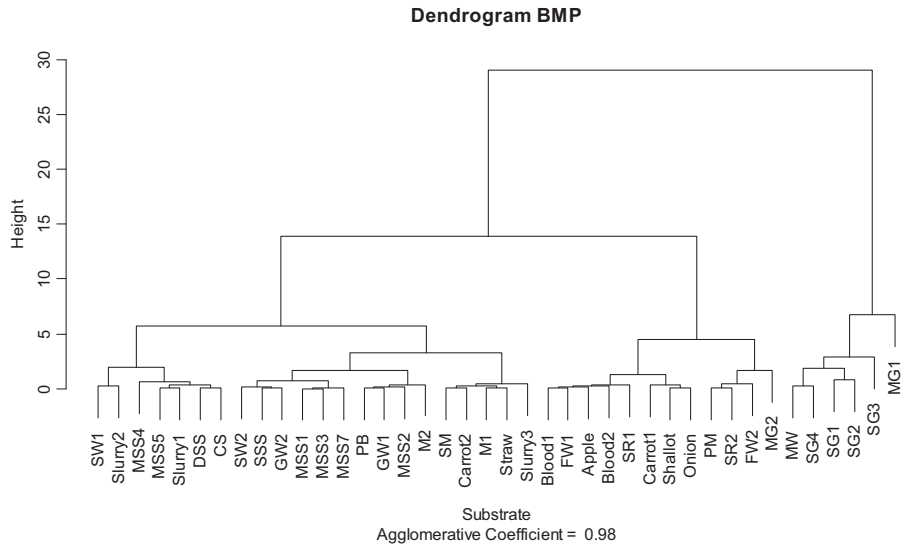


Fig. 3. Hierarchical clustering from BMP expressed on total solids basis.

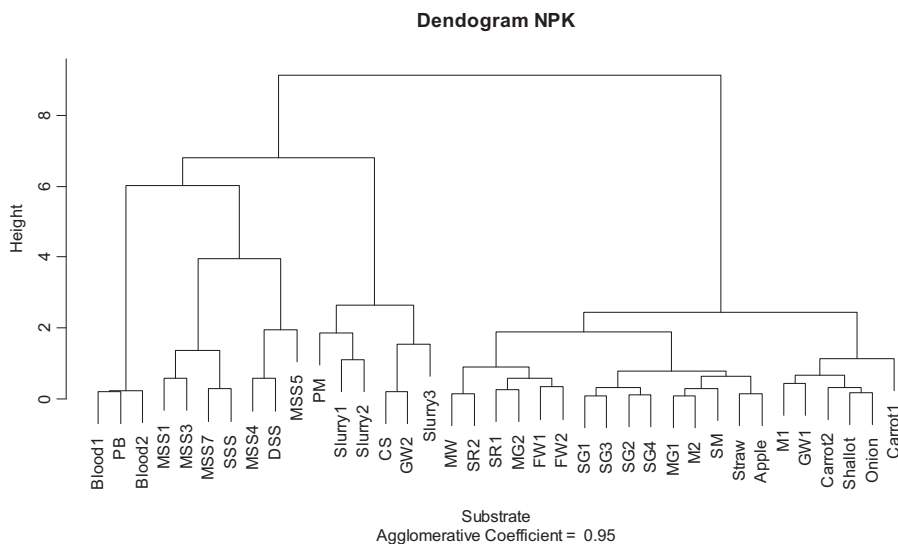


Fig. 4. Hierarchical clustering from NPK expressed on total solids basis.

2. Experimental design, materials and methods

2.1. Collection and preparation of samples

The 42 wastes and residues were collected from different agro-industrial, agricultural or urban sources. The solid substrates followed a method of quartering in order to obtain a representative sample. The sampled solids were separately ground into liquid nitrogen to a size of around 1–3 mm to obtain a homogenous sample. Floating solids from municipal WWTP grease were separated, and then it was mixed with the liquid phase before sampling to increase the homogeneity. Each substrate was stored at -20°C prior to analysis.

2.2. Physicochemical and biochemical analysis

pH was measured directly on liquid samples. For solid samples, 60 g of sample were diluted in 300 ml of water, agitated during 1 h and pH was measured after 3 h of decantation. TS, VS and COD were determined following standard methods (EN12880-12879, NF T90-101).

Biochemical methane potential (BMP) was determined as described by Fisgativa et al. [1]. Measurements were made in triplicate using hermetically closed 572 ml-bottles, mixing 40 ml of inoculum and 1–95 g of liquid substrate or ground substrate in the case of solid sample, to raise a 1 gVS inoculum:1 gVS substrate ratio. The inoculum was obtained from a well-established anaerobic digester (100 L) acclimated to degrade pig slurry supplemented with horse feed. The bottles were incubated at 38°C for about 40 days. Daily pressure measurements enabled quantification of biogas production. Biogas was then sampled to determine CH_4 concentration using a gas chromatography equipped with an electron capture detector (Agilent Technologies, 6890N, USA) according to the method as described by Lucas et al. [2].

Organic matter fractionation was performed in two ways: the total lipids, proteins and carbohydrates fractionation (biochemical fractionation) and the Van Soest fractionation. To determine lipids content, a nuclear magnetic resonance (NMR) measurement was performed as described by Picard et al. [3]. The analysis was carried out on the solid fraction after it was dried at 38°C until constant weight and grounded at 1.5 mm. In brief, lipids measurements were performed with a low field NMR operating at a frequency of 10 MHz using a Bruker spectrometer Minispec MQ 10. About 1.5 g of dried sample was placed in a 30 mm-diameter NMR tube with an approximate height of 10

mm. The calibration equation of the NMR apparatus was calculated with four reference tubes filled with different heights of colza oil (CAS 8002139) between 1 and 10 mm. For each sample and for each reference tube, the free induction decay was measured for about 45 s using a relaxation delay of 3 s and 9 scans accumulation. Lipid content was then calculated on the basis of a simple linear regression [4]. Protein content was calculated using the nitrogen content as described by Dintzis et al. [5]:

$$\text{Proteins} = (\text{TKN} - \text{NH}_4^+) * 6.25$$

where Proteins, TKN and NH_4^+ are expressed in g N.kgWW⁻¹ and 6.25 is the average conversion factor to estimate the protein content based on a N analysis. Then, carbohydrates content was considered being the residual fraction of VS outwards the sum of lipids and proteins.

The dried fraction used to determine lipids content was also used for the modified Van Soest fibres analysis method, as described by Fisgativa et al. [1]. In this method, successive extractions with neutral detergent (NDF), acid detergent (ADF) and lignin acid detergent (ADL) are used to discretise the non-soluble organic matter into 5 fractions: water soluble OM (SOL_W) (determined as the difference between water extracted VS and raw waste VS), soluble in neutral detergent (SOL_{NDF}), hemicellulose-like OM (HEM), cellulose-like OM (CEL) and lignin-like OM (LIG). In this study the SOL_W and SOL_{NDF} were summarised in a unique SOL fraction (water and neutral detergent OM fraction).

Total NTK, total NH_4^+ , total phosphorus and total potassium were determined with the standard methods (NF EN 13342, NF EN ISO 11885). Cations and anions were analysed using a Metrohm 850 Professional Ionic Chromatography on liquid samples and dissolved phase.

Acknowledgements

This work was funded by BpiFrance within the frame of the project PSPC VALODIM.

Transparency document. Supporting information

Transparency data associated with this article can be found in the online version at <https://doi.org/10.1016/j.dib.2018.06.050>.

References

- [1] H. Fisgativa, A. Tremier, S. Le Roux, C. Bureau, P. Dabert, Understanding the anaerobic biodegradability of food waste: relationship between the typological, biochemical and microbial characteristics, *J. Environ. Manag.* 188 (2017) 95–107.
- [2] T. Lucas, D. Le Ray, P. Peu, M. Wagner, S. Picard, A new method for continuous assessment of CO₂ released from dough baked in ventilated ovens, *J. Food Eng.* 81 (2007) 1–11.
- [3] S. Picard, F. Beline, R. Girault, G. Bridoux, C. Cambert, A. Davenel, Determination of lipid fraction from organic wastes using Nuclear Magnetic Resonance (NMR): comparison to the soxhlet method, in: *Proceedings of the 13th World Congress on Anaerobic Digestion*, Santiago de Compostela, Spain, 2014.
- [4] C.A. Toussaint, F. Medale, A. Davenel, B. Fauconneau, P. Haffray, S. Akoka, Determination of the lipid content in fish muscle by a self-calibrated NMR relaxometry method: comparison with classical chemical extraction methods, *J. Sci. Food Agric.* 82 (2002) 173–178.
- [5] F.R. Dintzis, J.F. Cavins, E. Graf, T. Stahly, Nitrogen-to-protein conversion factors in animal feed and fecal samples, *J. Anim. Sci.* 66 (1988) 5–11.