



HAL
open science

Quality assessment of cryopreserved black-lip pearl oyster *Pinctada margaritifera* spermatozoa

Marina Demoy-Schneider, Nelly Schmitt, Gaël Le Pennec, Marc Suquet, Jacky Cosson

► To cite this version:

Marina Demoy-Schneider, Nelly Schmitt, Gaël Le Pennec, Marc Suquet, Jacky Cosson. Quality assessment of cryopreserved black-lip pearl oyster *Pinctada margaritifera* spermatozoa. *Aquaculture*, 2018, 497, pp.278 - 286. 10.1016/j.aquaculture.2018.07.067 . hal-01889786

HAL Id: hal-01889786

<https://hal.science/hal-01889786>

Submitted on 26 May 2020

HAL is a multi-disciplinary open access archive for the deposit and dissemination of scientific research documents, whether they are published or not. The documents may come from teaching and research institutions in France or abroad, or from public or private research centers.

L'archive ouverte pluridisciplinaire **HAL**, est destinée au dépôt et à la diffusion de documents scientifiques de niveau recherche, publiés ou non, émanant des établissements d'enseignement et de recherche français ou étrangers, des laboratoires publics ou privés.

Aquaculture

December 2018, Volume 497 Pages 278-286

<http://dx.doi.org/10.1016/j.aquaculture.2018.07.067><http://archimer.ifremer.fr/doc/00453/56421/>

© 2018 Elsevier B.V. All rights reserved.

Archimer<http://archimer.ifremer.fr>

Quality assessment of cryopreserved black-lip pearl oyster *Pinctada margaritifera* spermatozoa

Demoy-Schneider Marina ^{1,*}, Schmitt Nelly ¹, Le Pennec Gaël ², Suquet Marc ³, Cosson Jacky ⁴¹ UMR 241 EIO, Université de la Polynésie Française, BP 6570, 98 704, Faa'a, Tahiti, France² Laboratoire de Biotechnologie et Chimie Marines, Université Bretagne Sud, BP 92 116 56 100 Lorient, France.³ Ifremer, UMR 6539 Lemar, Site expérimental d'Argenton, 29840 Argenton en Landunvez, France.⁴ Faculty of Fisheries and Protection of Waters, South Bohemian Research Center of Aquaculture and Biodiversity of Hydrocenoses, University of South Bohemia in Ceske Budejovice, 38925 Vodnany, Czech Republic.* Corresponding author : Marina Demoy-Schneider, email address : marina.demoy-schneider@upf.pf

Abstract :

High quality of sperm is essential to a high fertilization rate, especially post- cryopreservation. Assessment of sperm integrity, motility and energy reserves before cryopreservation is necessary for selection of milt with optimal fertilizing potential. We describe the effect of cryopreservation on the quality of black-lip pearl oyster, *Pinctada margaritifera* var. *cumingii* sperm. Evaluated quality indices of fresh and frozen/thawed *P. margaritifera* spermatozoa, included morphology, ultrastructure and motility characteristics relative to the energy content (ATP) and its capacity to be sustained by mitochondrial respiration. Morphology and ultrastructure were quantitatively evaluated using images obtained by optical microscopy assisted by the Image J software and TEM, respectively. Sperm motility was assessed using Image J software combined with a computer assisted sperm analysis plugin adapted for assessing *P. margaritifera* spermatozoa. Other sperm quality parameters evaluated included O₂ consumption, ATP content, and creatine kinase activity. Frozen/thawed spermatozoa exhibited damage to the head but retained a compact spherical shape. Sperm motility indicators showed a significant decrease in quality resulting from the freeze/thaw process. The percent of motile cells was 54% compared to 84% in fresh sperm, O₂ consumption was 4.8 compared to 44 nanomol min⁻¹, ATP content was 0.72 nmol/10⁹ spermatozoa in the activating medium compared to 4.54 nmol/10⁹ spermatozoa, and creatine kinase activity was 9.06 × 10⁻⁵ IU mg⁻¹ protein compared to 12.5 × 10⁻⁵ IU mg⁻¹ protein.

The cryopreservation protocol allowed obtaining an acceptable motility rate after thawing, confirming the predictive value of sperm motility measurements before cryopreservation in terms of their ability to withstand freezing process.

Highlights

► Quality of the frozen/thawed black-lip pearl oyster *Pinctada margaritifera* spermatozoa. ► Progress to an efficient cryoconservation method for *P. margaritifera* spermatozoa. ► Preservation of *P. margaritifera* through the durable development of the pearl oyster culture in French Polynesia.

Keywords : Spermatozoa quality, Cryopreservation, *Pinctada margaritifera*, Motility, Metabolism, CASA

75 **1. Introduction**

76

77 In French Polynesia, the black pearls produced by the endemic black-lip pearl oyster
78 *Pinctada margaritifera*, are valued for characteristics such as their highly polished aspect and
79 variety of colors. This economic asset needs to be preserved and perpetuated through
80 development of pearl oyster culture and sustainable production. In French Polynesia, black
81 pearl production currently relies almost exclusively on the collection of spat of wild *P.*
82 *margaritifera*, making aquaculture and marketing dependent on natural resources.

83 Gamete cryopreservation is a potentially powerful technique for preservation of black-lip
84 pearl oyster lineages to safeguard its biodiversity. Several research programs have been
85 developed to define biological and physiological parameters of black-lip pearl oyster
86 spermatozoa in various swimming media. These studies have shown that *P. margaritifera*
87 spermatozoa possess characteristics of movement, motility, mitochondrial respiration rates,
88 and ATP utilization similar to those of other bivalve species (Demoy-Schneider et al. 2012,
89 2014). Motility of black-lip pearl oyster spermatozoa develops gradually when spermatozoa
90 are transferred into alkaline sea water with the percentage of motile cells increasing and
91 motility lasting for several minutes. The fully motile spermatozoa exhibit planar and
92 sinusoidal flagellar waves in a homogeneous fashion. The swimming tracks are almost
93 circular with head trajectories describing arcs interspersed with short linear segments.
94 Spermatozoa held at 4° C retain potent motility for several days and can be subsequently
95 activated by alkaline swimming medium. Mitochondrial respiration rates and ATP utilization
96 are closely bound to the activation of motility. The respiration rates are strongly increased and
97 ATP is more rapidly consumed immediately after motility activation (Demoy-Schneider et al.
98 2012, 2014).

99 Cryopreservation technologies should be studied in this species using techniques
100 applied to teleost (Martínez-Páramo et al. 2017), sea urchins (Adams et al. 2004a) and bivalve
101 mollusks such as *Crassostrea gigas* (Bougrier and Rabenomanana 1986; Adams et al. 2004b;
102 Dong et al. 2005), *Crassostrea virginica* (Paniagua-Chavez and Tiersch 2001; Yang et al.
103 2012), *Crassostrea tulipa* (Yankson and Moyse 1991), *Haliotis diversicolor supertexta* (Gwo
104 et al. 2002), *Pinctada fucata martensii* (Kawamoto et al. 2007; Narita et al. 2007, 2008),
105 *Mytilus galloprovincialis* (Di Matteo et al. 2009; Liu et al. 2016), *Argopecten purpuratus*
106 (Espinoza et al. 2010), *Ostrea edulis* (Horváth et al. 2012), *Pecten maximus* (Suquet et al.
107 2016), and *Pinctada angulata* (Riesco et al. 2017).

108 Lyons et al. (2005) and Acosta-Salmon et al. (2007) reported the effect of several
109 cryoprotectant additives on *P. margaritifera* sperm motility after freeze/thawing and Hui et al.
110 (2011) reported reduced viability of spermatozoa after freeze/thawing. However, other studies
111 focused cryopreservation aspects in different species leading to varied sperm survival rates
112 after thawing, and suggested limitations of using only a single trait to define sperm quality
113 (Holt and Van Look 2004). Complementary studies such as those investigating movement
114 tracking using computer assisted sperm analysis (CASA), cell integrity, and activity of
115 enzymes involved in the regeneration of ATP, are expected to lead to better understanding of
116 *P. margaritifera* sperm quality prior to cryopreservation. Sperm motility is one of the most
117 important criteria in sperm quality, especially in predicting its fertilization ability (Cosson et
118 al., 2008a and b).

119 In French Polynesia, hatchery practices have been developed in the same oyster species, and
120 some fertilization assays using frozen/thawed spermatozoa show fertilization rates similar to
121 those obtained using fresh spermatozoa (Hui et al. 2009, 2011). In this context, *P.*
122 *margaritifera* sperm cryopreservation will prove beneficial to black pearl commercial interest.
123 The goals of sperm preservation are to maintain the gametes of individuals selected for high-

124 growth potential and/or the color of their pearls (Ky et al. 2015) along with easier availability
125 and lower risks compared to those incurred in maintenance of broodstock. In addition, the
126 freezing of gametes assures the *ex-situ* preservation of genetic diversity of the populations of
127 wild black-lip pearl oysters threatened with standardization by the transfer of the juveniles
128 among Polynesian islands (Arnaud-Haond et al. 2004). Sperm freezing thus present a means
129 of maintaining the economic potential and safety of black-lip pearl oyster culture, knowing
130 that the black pearl represents the second economic resource after tourism in French
131 Polynesia.

132

133 The objective of the study was to describe the quality of fresh and frozen/thawed
134 black-lip pearl oyster spermatozoa assessing parameters such as percent of intact spermatozoa
135 and spermatozoa ultrastructure, membrane integrity, motility and, metabolism.

136

137 **2. Material and methods**

138 **2.1. Oysters and sperm collection**

139

140 All experiments were carried out using black-lip pearl oysters reared in the Takapoto
141 Atoll, Tuamotu Archipelago, French Polynesia, located 560 km east of Tahiti (14°32' S
142 145°14' W) until the age of 24 months and an average diameter of 10.5 ± 2.1 cm (Pouvreau et
143 al. 2000). During the natural reproduction period, pearl oysters were collected from suspended
144 long-line culture and shipped at 25 ° C on a 1 h flight to the laboratory (UMR 241 EIO,
145 University of French Polynesia, Tahiti, French Polynesia). Immediately upon arrival, oysters
146 were immersed in filtered seawater tanks (25 ° C, pH 8.1) for 24 h without feeding, prior to
147 experimental use.

148 The shell valves of each oyster were opened, using a knife to disrupt the shell
149 muscle. Milt was manually collected by micropipette after natural release from the gonopore.
150 The semen (dry sperm) was stored for a maximum of 2 h in test tubes at $4.0\text{ }^{\circ}\text{C} \pm 0.5\text{ }^{\circ}\text{C}$
151 before measurements.

152

153 **2.2. *Swimming medium***

154

155 For a rapid evaluation of sperm motility, an aliquot of sperm from each male was
156 transferred at a dilution of 1:2000 (v/v) in a saline activating medium composed of NaCl, 19.5
157 g L^{-1} ; glycine, 6.25 g L^{-1} ; CaCl_2 , 0.15 g L^{-1} ; MgSO_4 , 0.19 g L^{-1} and tris-aminomethane, 2.42 g
158 L^{-1} (DCSB₄) (adapted from Paniagua-Chavez et al. 1998) with final pH adjusted to 8.2
159 according to Bougrier and Rabenomanana (1986). Chemical compounds were purchased from
160 Fisher Scientific Labosi (Elancourt, France), VWR-Prolabo (Fontenay sous Bois, France) and
161 Sigma-Aldrich (Saint Quentin Fallavier, France).

162 The analyses were performed on 28 males. The sperm of 18 presenting sperm motility > 70%,
163 was used for cryopreservation.

164

165 **2.3. *Cryopreservation***

166

167 The cryoprotectant additive mixture was adapted from the method of Hui et al.
168 (2009), using a solution of 0.7 M trehalose, 0.8 M dimethyl sulfoxide and 10% oyster
169 hemolymph collected from the mantle cavity. According to Acosta-Salmon et al. (2007), milt
170 was slowly mixed into the cryoprotectant additive mixture at a 1:10 (v/v) dilution and 350 μL
171 of the mixture was placed in 500 μL semen straws (IMV, France). Samples remained on ice
172 less than 10 min between milt dilution and initiation of the cooling process. Cooling was

173 conducted in liquid nitrogen vapor: straws were placed on a floating tray 3 cm above the
174 liquid nitrogen surface for 12 min before immersion. The straws remained at least 2 h in the
175 liquid nitrogen. Subsequently, they were thawed by incubation in a water bath for 30 sec 25 °
176 C.

177

178 **2.4. Sperm preparation and processing**

179 **2.4.1. Sperm concentration**

180

181 The sperm concentration of each frozen/thawed sample was evaluated by counting
182 the cells at 400x (Leica, DM 2000) magnification after 1:2000 (v/v) dilution in filtered
183 seawater. Images were recorded using a numeric digital video camera (Leica, DFC 425C)
184 followed by image analysis. The sperm suspension was introduced in a Malassez's
185 hemacytometer and six 0.05 mm² rectangular areas were randomly photographed and
186 analyzed using ImageJ 1.45 software (<https://imagej.nih.gov/ij/>) under the parameters
187 described in Table 1 to calculate the mean concentration as spermatozoa mL⁻¹.

188

189 **2.4.2. Sperm morphology and ultrastructure**

190

191 Morphological characteristics of fresh and frozen/thawed spermatozoa, including
192 area, Crofton perimeter, Feret diameter and circularity were determined using Image J
193 software. In an intact particle with an uninterrupted surface, the mean Feret diameter is
194 proportional to the particle perimeter. Circularity provides indications of the particle shape
195 and is defined as $4\pi \times a / (p)^2$, in which "a" is the particle area and "p" is the particle
196 perimeter. This parameter ranges between 0 and 1, the latter corresponding to a perfect round

197 particle. The calibration parameters were the same as for the evaluation of sperm
198 concentration (Table 1).

199

200 Transmission electron microscopy (TEM) was used to assess ultrastructure of fresh
201 and frozen/thawed sperm samples from three oysters randomly selected. Fresh sperm was
202 diluted 1:20 (v/v) in regular filtered seawater. Frozen/thawed as well as fresh spermatozoa
203 were allowed to settle at room temperature (25 ° C) for 30 min to eliminate the cryoprotectant
204 additive mixture without centrifugation. The cryoprotectant additive supernatant was
205 discarded and the frozen/thawed spermatozoa were diluted 1:20 (v/v) in regular filtered
206 seawater. Motility was assessed in the DCSB₄ activating medium as previously described
207 (Demoy-Schneider *et al.*, 2012). Then, 1 mL of fixative (5% glutaraldehyde in filtered
208 seawater) was slowly added under gentle stirring, to 1 mL of the diluted sperm sample. After
209 complete homogenization, the samples were incubated at 4 ° C overnight to achieve optimal
210 fixation. Fixative supernatant was removed and samples were washed twice with 2 mL
211 sodium cacodylate buffer (pH 7.3, 0.1 M in filtered seawater) with overnight settling down at
212 4 ° C after each washing. After the second washing, sodium cacodylate supernatant was
213 removed and 2 mL of 70% ethanol was added to the fixed spermatozoa. After a complete
214 dehydration in ascending series of alcohol, spermatozoa were embedded in Spurr's resin
215 following manufacturer's recommendations (EM0300, Sigma-Aldrich, Saint Quentin
216 Fallavier, France). Ultra-thin sections (60 nm) were contrasted with uranyl acetate and lead
217 citrate before observations using a JEOL JEM-1400 transmission electron microscope.

218

219 **2.4.3. Sperm motility assessment**

220

221 Motility characteristics of fresh and frozen/thawed spermatozoa were obtained from
222 video records. Fresh sperm was diluted 1:100 (v/v) while frozen/thawed sperm was diluted
223 1:10 (v/v), using DCSB₄ as activating solution in test tubes for 4 min, at the end of the
224 capacitation phase, when maximum values of sperm movement are observed (Boulais et al.
225 2018) and reach full sperm motility. Subsequently, 2 µL of the suspension was immediately
226 transferred into a 50 µL drop of DCSB₄ onto a glass slide and covered with a cover-slip
227 (25 000x final dilution) at room temperature. Microscopy observations were conducted, at the
228 level of the cover-slip, 4 min post-activation using a LEICA DM2000 phase contrast
229 microscope under 400x magnification. Ten-second video records were filmed with a LEICA
230 DFC425C video camera (25 frames sec⁻¹). Sperm movement was analyzed using the computer
231 assisted sperm analysis (CASA) plug-in for ImageJ software (Wilson-Leedy and Ingermann
232 2007) initially developed for fish spermatozoa and adapted to the black-lip pearl oyster
233 spermatozoa. Sperm motility percentage, straight line velocity (VSL, µm sec⁻¹), velocity of
234 average path (VAP, µm sec⁻¹) and linearity (LIN, as a measure of a curvilinear path, 100 x
235 VSL/VAP) were analyzed. The calibration parameters used for motility measurements are
236 presented into the Table 2. A minimum of 50 spermatozoa were tracked for each video record.
237

238 2.5. *Sperm metabolism and energy stores*

239
240

241 Mitochondrial respiration rates of the sperm suspensions were assessed for fresh and
242 frozen/thawed spermatozoa, by continuous recording of the oxygen concentration, during 10
243 min in filtered seawater or DCSB₄ with a highly sensitive calibrated Clark electrode (Rank
244 Brothers, Cambridge, England) according to Pacey and Bentley (1993). To determine the O₂
245 consumption, 50 µL of dry black-lip pearl oyster sperm (15x10⁹ spermatozoa mL⁻¹) was
246 diluted in 1 mL of the swimming solution (DCSB₄) to a final concentration of 7.5x10⁸
247 spermatozoa mL⁻¹ in a tightly closed chamber. The sperm suspension was kept as homogenous

248 as possible using a magnetic stirrer. A 100% reading in O₂ concentration (253 nmol mL⁻¹)
249 indicated to the swimming medium in equilibrium with the air at 25 ° C while 0% O₂
250 concentration in the swimming medium was obtained by addition of few crystals of sodium
251 dithionite at the end of the measurement period (Demoy-Schneider et al. 2012).

252

253 Adenosine 5' triphosphate (ATP) content of the milt was estimated as we
254 previously described (Demoy-Schneider et al. 2012). Briefly, ATP content was assessed in
255 triplicate for fresh and frozen/thawed sperm, by bioluminescence (ATPlite-M kit according
256 to the manufacturer instructions, Perkin Elmer Life and Analytical Sciences, Villebon sur
257 Yvette, France). The ATP concentration was evaluated at 4 min post-activation, when
258 spermatozoa were fully motile. Sperm dilution was, adjusted to a final concentration of
259 75x10⁶ spermatozoa mL⁻¹. Luminescence intensity was assessed using a Spectrafluor Plus
260 luminometer (Tecan Group Ltd., Maennedorf, Switzerland) with the XFluor4 software
261 (Genios Pro, Tecan Group Ltd., Maennedorf, Switzerland). The emitted light was in direct
262 proportion to the ATP content; the latter was calculated using a standard curve [relative
263 luminescence units versus ATP content (nmol mL⁻¹)].

264

265 According to Dawson et al. (1965), creatine kinase activity is measured by three
266 successive coupled enzyme reactions, with the final measured compound being nicotinamide
267 adenine dinucleotide phosphate (NADPH). In the present study, NADPH production was
268 measured spectrophotometrically at 340 nm, using the ECPK-100 kit (EnzyChromTM CK
269 Assay Kit, Bioassay Systems, Hayward, CA, USA) and was proportional to the creatine
270 kinase activity. As a positive control, a piece of chicken breast muscle freshly excised was
271 used. One gram of chicken muscle was homogenized using an Ultraturax homogenizer in a
272 threefold volume of lysis buffer (Tris hydroxyl amino methane 0.1 M, EDTA 1 mmol) at 4 °

273 C for 1 min. A 500 μ L volume of fresh or frozen/thawed sperm was diluted in 1.5 mL of lysis
274 buffer and homogenized in the same conditions as previously described for the chicken
275 muscle. The homogenized tissue was centrifuged at 20 000 x g for 30 min at 4 ° C (adapted
276 from Bacou 1972), and 10 μ L of each supernatant were used for creatine kinase activity
277 quantification. Enzyme reactions were performed in 96-well flat bottom micro-plates. A 100
278 μ L volume of kit reaction medium was prepared and immediately added to 10 μ L of
279 supernatant. The micro-plates were shaken for 5 min at 25 ° C and then incubated at 37 ° C
280 for 10 min. Measurements were performed in triplicate, 10 min and 40 min after mixing, at
281 340 nm (UV) using an Infinite M200 spectrophotometer (TECAN, Austria).

282 We chose to express creatine kinase activity as IU mg^{-1} of protein, to facilitate
283 comparison with published results of studies in other species. Sperm total proteins were
284 prepared with the lysis buffer provided with the kit and quantified using the method of Lowry
285 et al. (1951).

286

287 **2.6. Data analysis**

288

289 Data are presented as mean \pm SEM obtained from the analysis of independent sperm
290 samples. Percentages were arcsine square root transformed before further analysis. To
291 quantify the effect of cryopreservation on the percentage of motile spermatozoa, on the
292 spermatozoa movement and on the morphological characteristics, means were compared using
293 a two-way analysis of variance (ANOVA). When significant differences were observed ($P <$
294 0.05) Shapiro Wilk and Fisher tests were used.

295

296 **3. Results**

297

298 **3.1. Sperm concentration**

299

300 The total volume of dry sperm collected from each animal was individual-dependent
301 with a mean of 1.00 ± 0.25 mL. The mean sperm concentration was $16.1 \pm 1.2 \times 10^9$
302 spermatozoa mL^{-1} ($n = 28$).

303

304 **3.2. Effect of cryopreservation on spermatozoa morphology and ultrastructure**

305

306 Most assessed morphological parameters of frozen/thawed sperm showed a
307 significant difference ($P < 0.05$) from those of fresh (Table 3). Area, Crofton perimeter, and
308 Feret diameter values were 61%, 39% and 35% lower, respectively. No significant differences
309 were observed in the circularity parameter and the Feret diameter/Crofton perimeter ratio.

310

311 Fifty TEM images were analyzed. The black-lip pearl oyster spermatozoon
312 possessed a spherical head and a short mid-piece. The dense spherical nucleus occupied
313 most of the head and exhibited an anterior depression located in the sub-acrosomal zone
314 and a posterior depression at the basal pole. The proximal centriole was inserted centrally
315 into a ring (Fig 1a) comprising four mitochondria (Fig. 1b). The distal centriole was located
316 in the mid-piece, near the base of the flagellum (Fig. 1a). A flat cap was apparent over the
317 acrosome, and the sub-acrosomal space was filled with a dense material (Fig. 1c). The
318 axoneme comprises 9 peripheral + 2 central microtubules (Fig.1d, 1f).

319 Damage to the plasma membrane of frozen/thawed spermatozoa was observed. The
320 membrane appeared swollen on some portions of the head (Fig. 1e, 1f). Minimal
321 differences from fresh spermatozoa were noted in the acrosome (Fig. 1g) and mitochondria
322 (Fig. 1h). The nucleus and chromatin did not differ from those of fresh spermatozoa. The
323 most prevalent difference was related to the flagellum: the latter was not visible in nearly

324 80% of frozen/thawed spermatozoa TEM images possibly because of the fragilization of the
325 head/tail junction resulting from the treatment applied for TEM visualization (Fig. 1e). When
326 the flagellum was observable, proximal and distal centrioles were located in the same
327 position as in fresh spermatozoa. The axoneme appeared to have a similar pattern that of
328 the fresh spermatozoa, with peripheral and central microtubules (Fig. 1h).

329

330 **3.3. *Effect of cryopreservation on sperm motility and movement***

331

332 Fresh, as well as frozen/thawed spermatozoa were non-motile in regular seawater,
333 but motility was activated in a large proportion of cells in DCSB₄: 84.7% of fresh cells and
334 54.4% of frozen/thawed spermatozoa (Fig. 2). In addition, the motility of fresh and
335 frozen/thawed spermatozoa showed a significant linear correlation ($P < 0.05$) ($R^2 = 0.59$). The
336 more motile the spermatozoa are before cryopreservation, the more motile they are after
337 thawing (Fig. 3). Velocity parameters for fresh sperm were $66.6 \mu\text{m sec}^{-1}$ for VSL and 165.7
338 $\mu\text{m sec}^{-1}$ for VAP. Linearity was calculated at 40.6%. After freeze/thaw, 35% lower sperm
339 motility ($P < 0.05$) and 20% lower VAP ($P < 0.05$) compared to fresh was observed. No
340 significant difference was observed in VSL and LIN values of fresh and frozen sperm for any
341 treatment (Table 4).

342

343 **3.4. *Effect of cryopreservation on sperm metabolism and energy stores***

344

345 Fresh sperm activation using DCSB₄ was associated with significantly higher ($P <$
346 0.05) O₂ consumption compared to cryopreserved (44.4 vs. $6.7 \text{ nmol min}^{-1}/10^9$ spermatozoa).
347 Respiration in activated fresh spermatozoa was $44.4 \text{ nmol min}^{-1}/10^9$ spermatozoa and was 4.8
348 $\text{nmol min}^{-1}/10^9$ after freeze/thaw, a difference of 89% ($P < 0.05$) (Fig. 4a).

349 Cryopreservation was associated with significantly ($P < 0.05$) lower sperm ATP
350 content, with and without activation. Motility activation makes the ATP content decrease
351 from 34.50 to 4.54 $\mu\text{mol}/10^9$ spermatozoa for fresh sperm and from 13.30 to 0.72 $\mu\text{mol}/10^9$
352 spermatozoa for frozen/thawed sperm (Fig. 4b). For frozen/thawed spermatozoa, this
353 represents a difference of 61.4% and 84.1%, in natural seawater and DCSB₄, respectively,
354 compared to fresh cells.

355 The EnzyChrom™ CK Assay Kit was calibrated in chicken muscle, in which
356 creatine kinase activity was in the range of 20.95 ± 1.35 IU mg^{-1} of muscle protein. The mean
357 protein content of the spermatozoa was 151.70 ± 23.70 g L^{-1} , corresponding to 9.48 ± 1.48 mg
358 $1/10^9$ spermatozoa, with mean sperm concentration of 16×10^9 spermatozoa mL^{-1} .
359 Compared to fresh spermatozoa, significantly lower ($P < 0.05$) creatine kinase activity was
360 observed after freeze/thawing, at 12.5 IU mg^{-1} in fresh spermatozoa and at 9.06 IU mg^{-1} in
361 frozen/thawed cells (Fig. 4c).

362

363 4. Discussion

364

365 Fertilization of an oocyte is dependent on the quality of spermatozoa, specifically
366 their motility (Cosson et al. 2008a, b) and metabolic activity (mitochondrial respiration, ATP
367 hydrolysis) (Boulais et al. 2015, 2017; Suquet et al. 2016). It has been reported that
368 cryopreservation may induce oxidative stress (Li et al. 2010a; Shaliutina-Kolešová et al.
369 2015) damaging spermatozoon structure (Gwo et al. 2003; Paniagua-Chavez et al. 2006;
370 Suquet et al. 2016) and decreasing motility (Dong et al. 2005; Gwo et al. 2002; Kawamoto et
371 al. 2007; Riesco et al. 2017; Suquet et al. 2016) and fertilizing capacity (Boulais et al. 2017;
372 Dong et al. 2005; Gwo et al. 2002; Narita et al. 2008; Paniagua-Chavez and Tiersch. 2001;
373 Riesco et al. 2017).

374

375 The black-lip pearl oyster spermatozoon has the typical morphological characteristics
376 of oysters spermatozoa: a round shape head and a short mid-piece containing four
377 mitochondria, a flat acrosome, an axoneme with 9+2 microtubules and, in contrast to
378 mammalian sperm, no accessory structures. These observations are in accordance with the
379 spermatozoa ultrastructure described in many other oyster species (Yurchenko 2012).

380 Area and Crofton perimeter have been previously used to estimate the quality of
381 frozen/thawed European eel spermatozoa (Asturiano et al. 2007) and frozen-thawed Japanese
382 oyster *Crassostrea gigas* larvae (Suquet et al. 2012a). No significant variation was observed
383 in the circularity parameter, suggesting that the spermatozoa kept a circular contour shape
384 after the freeze/thawing process. The Feret diameter/Crofton perimeter ratio did not
385 significantly differ from fresh, indicating that the particle shape remained intact after thawing.

386 On the other hand, we observed that the area of frozen/thawed spermatozoa was 61% lower
387 than that of fresh sperm. Crofton perimeter was 39% lower and Feret diameter 35 % lower,
388 probably associated with spermatozoon head damage (Table 3). The TEM micrographs
389 revealed that the plasma membrane was disrupted at the head-tail junction, in the
390 mitochondria region. We observed the absence of visible flagella, for a high number of
391 frozen/thawed spermatozoa. The complete flagellum may not have been included in the
392 photographic frame. Flagella may also have become detached during sample processing. In
393 addition, the accumulation of swimming spermatozoa near surfaces, obscuring the flagella
394 should be considered, as has been shown in several species (Cosson et al. 2003). This
395 accumulation may partly explain, why the mean % of motile cells remains of 54% in motility
396 trials when about 80% of spermatozoa have lost their flagellum after freezing.

397 We observed swelling in the plasma membrane after the freeze/thaw process. Similar damage
398 was reported in the Chilean scallop *Argopecten purpuratus* (Espinoza et al. 2010), blue mussel

399 *Mytilus galloprovincialis* (Liu et al. 2016) and great scallop *Pecten maximus* (Suquet et al.
400 2016).

401 Damage caused by the freeze-thaw process may differ with species. Studies of other species
402 reported that alterations in morphology of frozen/thawed spermatozoa are clearly visible.
403 Kurokura et al. (1990) observed abnormalities of the pacific oyster acrosome and mid-piece
404 and Gwo et al. (2003) observed alterations inside the chromatin. Suquet et al. (2016) noted
405 variable damage in samples of the great scallop: in some spermatozoa, little or no damage was
406 observed at the level of acrosome and mitochondria while for others, alterations were
407 considerable.

408 The anomalies we observed in the black-lip pearl oyster morphological parameters (area,
409 diameter and perimeter), suggests alterations in the shape of spermatozoa resulting from the
410 freeze/thaw process, although the circularity parameter and Feret diameter/Crofton perimeter
411 ratio did not differ significantly from fresh. These results confirmed that, despite the addition
412 of a cryoprotectant agent, spermatozoa undergo significant morphological and ultrastructure
413 damage with freezing, which could influence their quality after thawing.

414

415 For several marine species, sperm membrane integrity is closely related to motility
416 (Paniagua-Chavez et al. 2006; Merino et al. 2011). The CASA plug-in developed for Image J
417 (Wilson-Leedy and Ingermann 2007) has long been used to describe sperm motion and
418 provides information for quality assessment of semen of many species, including oysters
419 (Wilson-Leedy and Ingermann 2007; Amann and Waberski 2014; Boulais et al. 2015;
420 Aberkane and Iguer-ouada 2016; Suquet et al. 2016; Boulais et al. 2017). We observed that
421 movement of frozen/thawed black-lip pearl oyster spermatozoa differed from that of fresh.
422 This is in accordance with Acosta-Salmon et al. (2007), who reported that motility of
423 frozen/thawed sperm was 65% lower than the values recorded for fresh sperm, in the same

424 species. Many other studies of mollusk species have also shown significantly lower sperm
425 motility as a result of the freeze/thawing process. In 2016, Suquet et al. assessed the effect of
426 cryopreservation on the percentage of motile frozen/thawed spermatozoa and reported
427 motility values versus controls, of 65% in the Pacific oyster; from 50 and 60% in the blue
428 mussel *Mytilus galloprovincialis*, eastern oyster *Crassostrea virginica* or Chilean scallop
429 *Argopecten purpuratus*; and from 20 and 35% in the pearl oyster *Pinctada fucata martensii*,
430 great scallop *Pecten maximus*, and flat oyster *Ostrea edulis*. We did not observe any
431 significant difference in the motility duration (~10 min) in frozen/thawed black-lip pearl
432 oyster spermatozoa compared to fresh, in contrast to results obtained by Kawamoto et al.
433 (2007) for *P. fucata martensii* who reported significantly lower motility duration in
434 frozen/thawed spermatozoa. Our results suggest that when fresh spermatozoa are fully motile,
435 they remain still motile after thawing, which shows the predictive value of motility
436 measurements of sperm before freezing in their ability to resist freezing process. This
437 indicates that the spermatozoa that survived the freeze/thaw process possess sufficient energy
438 reserves to show activity similar to fresh sperm.

439 In the active spermatozoa, we observed 20% lower VAP in frozen/thawed sperm
440 compared to fresh. Suquet et al. (2016) reported 75% lower velocity in frozen/thawed
441 spermatozoa of the great scallop compared to fresh. Linhart et al. (2005) also reported
442 significantly lower VAP (44% difference) in cryopreserved *Cyprinus carpio* spermatozoa, and
443 Psenicka et al. (2008) found 35% lower VAP in frozen/thawed *Acipenser ruthenus*
444 spermatozoa. Straight-line velocity (VSL) was measured in fresh and frozen/thawed black-lip
445 pearl oyster spermatozoa, at $66.6 \pm 2.7 \mu\text{m sec}^{-1}$ and $62.5 \pm 4.8 \mu\text{m sec}^{-1}$, respectively. Many
446 studies have shown that, VSL in fish differs according to species. In *Barbus sharpeyi* VSL
447 was measured at $11.6 \mu\text{m sec}^{-1}$ (Kalbassi et al. 2013), while others have reported $59 \mu\text{m s}^{-1}$ in
448 *Salmo salar* (Figuerola et al. 2016), $97 \mu\text{m s}^{-1}$ to $134 \mu\text{m s}^{-1}$ in *Prochilodus lineatus* (Viveiros

449 and Leal 2016; Viveiros et al. 2017), $57 \mu\text{m s}^{-1}$ in rainbow trout *Oncorhynchus mykiss*
450 (Suquet et al. 2012b) and $150 \mu\text{m s}^{-1}$ in Siberian sturgeon *Acipenser baerii* spermatozoa
451 (Sarosiek et al. 2014). VSL of sea urchin spermatozoa was shown to be $170\text{-}240 \mu\text{m sec}^{-1}$ in
452 *Hemicentrotus pulcherrimus* (Hiramoto and Baba 1978) and $150\text{-}200 \mu\text{m sec}^{-1}$ in
453 *Paracentrotus lividus* (Fabbrocini and D'Adamo 2017). The factors contributing to the
454 relatively low velocity observed for black-lip pearl oyster in our study may be twofold: firstly,
455 the activation of oyster sperm motility and its duration is associated with internal
456 concentration of cAMP (Demoy-Schneider et al. 2014) under internal pH control (Boulais et
457 al. 2018). Maximum sperm velocity may not have been reached in our assay conditions,
458 although only 4 min separated the transfer to the swimming solution and the first video
459 records. Secondly, the movement of oyster spermatozoa is erratic (Swann 1975) and cells
460 frequently change the plane of their swimming path (Demoy-Schneider et al. 2014). These
461 features contribute to challenges and possible underestimation of velocity values. However,
462 the conditions for velocity estimates were the same for fresh and frozen/thawed sperm
463 samples.

464 Linearity in cryopreserved black-lip pearl oyster spermatozoa was not significantly
465 different from fresh. This is in accordance with the results obtained for *Acipenser ruthenus*,
466 in which LIN decreased slightly from 0.55 to 0.51 (Psenicka et al. 2008) and for Atlantic cod
467 *Gadus morhua L.*, in which LIN was not significantly modified by cryopreservation (Butts et
468 al. 2011). Our results indicated that sperm cells that survived the freeze/thaw process
469 presented some defects that induce slight perturbations in swimming ability compared to the
470 non-treated samples.

471

472

473 The metabolic activity of the black-lip pearl oyster spermatozoa, including
474 respiratory activity, ATP content and creatine kinase activity was significantly affected by the
475 cryopreservation process. Compared to fresh sperm, a significant 88% lower respiration rate
476 was observed in frozen/thawed sperm. This difference may be explained by the discrepancy in
477 the percent of active cells. Motile spermatozoa should present a high mitochondrial
478 respiration rate, allowing high ATP production. It was demonstrated in sea urchin (Tombes
479 and Shapiro 1985, 1989; Tombes et al. 1987; Walliman et al. 2011; Ingermann et al. 2011)
480 that creatine-phosphate stores and creatine kinase activity are related the flagellar motility
481 (Saudrais et al. 1998; Dzyuba et al. 2017; Fedorov et al. 2017). van Dorsten et al. (1997)
482 showed that, in sea urchin sperm, creatine kinase activity is related to energy metabolism (O₂
483 consumption and ATP production).

484 The initial ATP content was low in black-lip pearl oyster (5 nmol/10⁹ spermatozoa) compared
485 to Pacific oyster (45 nmol/10⁹ spermatozoa) (Suquet et al. 2010) and great scallop (203
486 nmol/10⁹ spermatozoa) (Suquet et al. 2016). This low ATP content may partly explain the low
487 velocity values observed for black-lip pearl oyster sperm. The cryopreservation process
488 resulted in 85% lower ATP content in thawed spermatozoa using DCSB₄ as activating
489 medium, as previously observed (Demoy-Schneider et al. 2014). This was in correlation with
490 the reduction in mitochondrial respiration. One interpretation is that most of the initial ATP
491 content is used to sustain sperm swimming, even for frozen/thawed spermatozoa which
492 contained low ATP levels. A similar decrease was reported in Pacific oyster (Suquet et al.
493 2010), but in great scallop, no significant difference in intracellular sperm ATP content was
494 observed between fresh and frozen/thawed sperm (Suquet et al. 2016). We found
495 cryopreservation to be associated with a 27.5% lower creatine kinase activity black-lip pearl
496 oyster spermatozoa compared to fresh. It was also shown that enzyme activity, including
497 creatine kinase activity, was involved in flagellar mobility and thus represents an indicator of

498 sperm quality, as reported in sea urchin (Tombes and Shapiro 1985, 1989; Wallimann et al.
499 1986; Tombes et al. 1987; Wallimann and Hemmer 1994; van Dorsten et al. 1997; Wallimann
500 et al. 2011), rainbow trout *O. mykiss* (Saudrais et al. 1998) and sturgeon *A. ruthenus* (Fedorov
501 et al. 2017). Cryopreservation has been reported to affect enzyme activity in marine fish.
502 Actually, Li et al. (2010b) observed alterations of enzyme activity involved in metabolism of
503 *C. carpio* frozen/thawed spermatozoa. Butts *et al.* (2011) reported a decrease in anti-trypsin
504 activity in Atlantic cod frozen/thawed spermatozoa and Zilli et al. (2004) observed an
505 increase of malate dehydrogenase activity in sea bass *Dicentrarchus labrax* frozen/thawed
506 spermatozoa, but did not observe change in activity of β -aspartate aminotransferase, isocitrate
507 dehydrogenase or β -D glucuronidase. This decrease in enzyme activity, combined with lower
508 mitochondrial respiration could explain why the ATP content is lower in frozen/thawed black-
509 lip pearl oyster spermatozoa, as these metabolic processes could be limiting for an efficient
510 cellular ATP supply (Cosson, 2012) in fish spermatozoa.

511

512 **5. Conclusion**

513

514 The present work was an opportunity to use a panel of quality criteria to ensure integrity,
515 motility and the energy stores prior to cryopreservation to assist in selection of the well-
516 adapted samples of black-lip pearl oyster sperm to cryopreservation. The descriptive analysis
517 is essential to optimize the success rate of cryopreservation and *in vitro* fertilization. The
518 simplest and most rapid parameter to be studied is the percent motility in the alkaline
519 activating medium DSCB₄. The results we obtained showed that motility measurements can
520 be used as a predictive possibility for future application of cryopreservation in this species.
521 Ultimately, fertilization tests must be conducted to confirm the success of sperm
522 cryopreservation in *P. margaritifera*.

523

524 **6. Acknowledgments**

525

526 This work was supported by the French *Ministère des Outremer*s and conducted
527 under the research program “*La cryoconservation des spermatozoïdes de l’huître perlière*
528 *Pinctada margaritifera*, un atout pour une perliculture durable et la sauvegarde de sa
529 *biodiversité*”. Black-lip pearl oysters *P. margaritifera* were kindly provided by the *Direction*
530 *des Ressources Marines et Minières* of French Polynesia. The ATP concentration
531 measurements were carried out in the *Laboratoire d’Analyses Médicales* of the *Centre*
532 *Hospitalier de la Polynésie française* in French Polynesia with the helpful collaboration of
533 Rodolphe BADIN. The authors are grateful to Michel RODIÈRE (UPF) for his help regarding
534 the statistical analysis and to Kathleen HILLS and Alan PIKE (Lucidus Consultancy) for
535 reviewing the English.

536

537 **7. References**

538

539 Aberkane, B., Iguer-ouada, M., 2016. Sperm motility parameters of *Barbus barbus callensis*
540 throughout the reproduction season: computer aided semen analysis and gametes motility
541 duration. *Iran. J. Fish. Sci.* 15, 1556-1567.

542

543 Acosta-Salmón, H., Jerry, D.R., Southgate, P.C., 2007. Effects of cryoprotectant agents and
544 freezing protocol on motility of black-lip pearl oyster (*Pinctada margaritifera* L.)
545 spermatozoa. *Cryobiology.* 54, 13-18.

546

547 Adams, S.L., Hessian, P.A., Mladenov P.V., 2004a. Cryopreservation of sea urchin
548 (*Evechinus chloroticus*) sperm. *CryoLetters.* 25, 287-300.

549

550 Adams, S.L., Smith, J.F., Roberts, R.D., Janke, A.R., Kaspar, H.F., Tervit, H.R., Pugh, P.A.,
551 Webb, S.C., King N.G., 2004b. Cryopreservation of sperm of the Pacific oyster (*Crassostrea*
552 *gigas*): development of a practical method for commercial spat production. *Aquaculture.* 242,
553 271-282.

554 Amann, R.P., Waberski, D., 2014. Computer-assisted sperm analysis (CASA): capabilities
555 and potential developments. *Theriogenology.* 81, 5-17.

556

557 Arnaud-Haond, S., Vonau, V., Bonhomme, F., Boudry, P., Blanc, F., Prou, J., Seaman, T.,
558 Goyard, E., 2004. Spatio-temporal variation in the genetic composition of wild populations of
559 pearl oyster (*Pinctada margaritifera cumingii*) in French Polynesia following 10 years of
560 juvenile translocation. *Molec; Ecology*. 13, 2001-2007.
561
562 Asturiano, J.F., Marco-Jiménez, M., Peñaranda, D.S., Garzón, D.L., Pérez, L., Vicente, J.S.,
563 Jover M., 2007. Effect of sperm cryopreservation on the european eel sperm viability and
564 spermatozoa morphology. *Reprod. Dom. Anim.* 42, 162-166.
565
566 Bacou, F., 1972. Evolution quantitative et qualitative de la créatine kinase chez le lapin au
567 cours des périodes fœtale et néonatale. *Ann. Biol. Anim. Bioch. Biophys.* 12, 581-588.
568
569 Bougrier, S., Rabenomanana, L.D., 1986. Cryopreservation of spermatozoa of the Japanese
570 oyster, *Crassostrea gigas*. *Aquaculture*. 58, 277-280.
571
572 Boulais, M., Soudant, P., Le Goïc, N., Quéré, C., Boudry, P., Suquet, M., 2015. Involvement
573 of mitochondrial activity and OXPHOS in ATP synthesis during the motility phase of
574 spermatozoa in the Pacific oyster, *Crassostrea gigas*. *Biol. Reprod.* 93, 1-7.
575
576 Boulais, M., Soudant, P., Le Goïc, N., Quéré, C., Boudry, P., Suquet, M., 2017. ATP content
577 and viability of spermatozoa drive variability of fertilization success in the Pacific oyster
578 (*Crassostrea gigas*). *Aquaculture*. 479, 114-119.
579
580 Boulais, M., Suquet, M., Arsenault-Pernet, M.E.J., Malo, F., Queau, I., Pignet, P., Ratiskol,
581 D., Le Grand, J., Huber, M., Cosson, J., 2018. Change of pH triggers sperm motility in the
582 Pacific oyster (*Crassostrea gigas*). *Biology Open*. 7, doi: 10.1242/bio.031427.
583
584 Butts, I.A.E., Babiak, I., Ciereszko, A., Litvak, M.K., Słowińska, M., Soler, C., Trippel, E.A.,
585 2011. Semen characteristics and their ability to predict sperm cryopreservation potential of
586 Atlantic cod, *Gadus morhua* L. *Theriogenology*. 75, 1290-1300.
587
588 Cosson, J., Huitorel, P., Gagnon, C., 2003. How spermatozoa come to be confined to surfaces.
589 *Cell Mot. Cytoskel.* 54, 56-63.
590
591 Cosson, J., Groison, A.L., Suquet, M., Fauvel, C., Dreanno, C., Billard, R., 2008a. Studying
592 sperm motility in marine fish: an overview on the state of the art. *J. Appl. Ichthyol.* 24, 460-
593 486.
594
595 Cosson, J., Groison, A.L., Suquet, M., Fauvel, C., Dreanno, C., Billard, R., 2008b. Marine
596 fish spermatozoa: racing ephemeral swimmers. *Reproduction*. 136, 277-294.
597
598 Cosson, J., 2012. ATP, the sperm movement energizer, in: Kuestler, E., Traugott, G. (Eds.),
599 Adenosine Triphosphate: chemical properties, biosynthesis and functions in cells". Nova
600 Publishers Inc., New York, pp. 1-46.
601
602 Dawson, D.M., Eppenberger, H.M., Eppenberger, M.E., 1965. Creatine kinase: evidence for a
603 dimeric structure. *Biochem. Biophys. Res. Commun.* 21, 343-353.
604

605 Demoy-Schneider, M., Levêque, A., Schmitt, N., Cosson, J., Le Pennec, M., 2012. Motility
606 activation and metabolism characteristics of spermatozoa of the black-lip pearl oyster
607 *Pinctada margaritifera* var: *cumingii* (Jameson, 1901). *Theriogenology*. 77, 53-64.
608

609 Demoy-Schneider, M., Schmitt, N., Suquet, M., Labbé, C., Boulais, M., Prokopchuk, G.,
610 Cosson, J., 2014. Biological characteristics of sperm in two oyster species: the Pacific Oyster,
611 *Crassostrea gigas*, and the black-lip-pearl oyster, *Pinctada Margaritifera*. in: Erickson, B.T.,
612 (Eds.), *Spermatozoa, biology, motility and function and chromosomal abnormalities*. Nova
613 Science Publishers Inc., New York, pp. 15-75.
614

615 Di Matteo, O., Langellotti, A.L, Masullo, P., Sansone, G., 2009. Cryopreservation of the
616 Mediterranean mussel (*Mytilus galloprovincialis*) spermatozoa. *Cryobiology*. 58, 145-150.
617

618 Dong, Q., Huang, C., Eudeline, B., Tiersch, T.R., 2005. Systematic factor optimization for
619 cryopreservation of shipped sperm samples of diploid Pacific oysters, *Crassostrea gigas*.
620 *Cryobiology*. 51, 176-197.
621

622 Dzyuba, B., Bondarenko, O., Gazo, I., Prokopchuk, G., Fedorov, P., Cosson, J., 2017.
623 Energetics of fish spermatozoa: the proven and the possible. *Aquaculture*. 472, 60-72.
624

625 Espinoza, C., Valdivia, M., Dupré, E., 2010. Morphological alterations in cryopreserved
626 spermatozoa of scallop *Argopecten purpuratus*. *Lat. Am. J. Aquat. Res.* 39, 121-128.
627

628 Fabbrocini, A., d'Adamo, R., 2017. Motility of sea urchin *Paracentrotus lividus* spermatozoa
629 in the post-activation phase. *Aquac. Res.* 48, 5526-5532.
630

631 Fedorov, P., Grabic, R., Fedorova, G., Cosson, J., Boryshpolets, S., Dzyuba, B., 2017.
632 Development and application of LC/HRPS for quantification of adenine nucleotides, creatine
633 phosphate, and creatine in sturgeon spermatozoa. *Czech. J. Anim. Sci.* 62, 67-74.
634

635 Figueroa, E., Valdebenito, I., Merino, O., Ubilla, A., Risopatrón, J., Farias J.G., 2016.
636 Cryopreservation of Atlantic salmon *Salmo salar* sperm: effects on sperm physiology. *J. Fish.*
637 *Biol.* 89, 1537-1550.
638

639 Gwo, J.C., Chen, C.W., Cheng, H.Y., 2002. Semen cryopreservation of small abalone
640 (*Haliotis diversicolor supertexta*). *Theriogenology*. 58, 1563-1578.
641

642 Gwo, J.C., Wu, C.Y., Chang, W.S., Cheng, H.Y., 2003. Evaluation of damage in Pacific
643 oyster (*Crassostrea gigas*) spermatozoa before and after cryopreservation using comet assay.
644 *CryoLetters*. 24, 171-180.
645

646 Hiramoto, Y., Baba S.A., 1978. A quantitative analysis of flagellar movement in echinoderm
647 spermatozoa. *J. Exp. Biol.* 76, 85-104.
648

649 Holt, W.V., Van Look, K.J.W., 2004. Concepts in sperm heterogeneity, sperm selection and
650 sperm competition as biological foundations for laboratory tests of semen quality.
651 *Reproduction*. 127, 527-535.
652

653 Horváth, Á., Bubalo, A., Cucević, A., Bartulovis, V., Urbanyi, B., Glamuzina, B., 2012.
654 Cryopreservation of sperm and larvae of the European flat oyster (*Ostrea edulis*). J. Appl.
655 Ichtyol. 28, 948-951.
656
657 Hui, B., Demoy-Schneider, M., Vonau, V., Le Moullac, G., Moriceau, J., Le Pennec, M.,
658 Cochard, J.C., 2009. Gamete cryopreservation, an asset for a durable pearl farming in French
659 Polynesia. Proceedings of the 11th Pacific Science Inter-congress, Tahiti, 2-6 March, isbn n°
660 978-2-11-098964-2.
661
662 Hui, B., Vonau, V., Moriceau, J., Tetumu, R., Vanaa, V., Demoy-Schneider, M., Suquet, M.,
663 Le Moullac, G., 2011. Hatchery-scale trials using cryopreserved spermatozoa in black-lip
664 pearl oyster (*Pinctada margaritifera*). Aquat. Living Resour. 24, 219-223.
665
666 Ingermann, R.L., Schultz, C.L., Kanuga, M.K., Wilson-Leedy, J.G., 2011. Metabolism of
667 motile zebrafish sperm. Comp. Biochem. Physiol. Mol. Integr. Physiol. 158, 461-467.
668
669 Kalbassi, M.R., Lorestani, R., Ghafli Maramazi, J., 2013. Analysis of saline activator solution
670 effects on sperm quality indices on *Barbus sharpeyi* by Image J software. Iran. J. Fish. Sci.
671 12, 357-377.
672
673 Kawamoto, T., Narita, T., Isowa, T., Aoki, H., Havashi, M., Komaru, A., Otha, H., 2007.
674 Effects of cryopreservation methods on post thaw motility of spermatozoa from the Japanese
675 pearl oyster, *Pinctada fucata martensii*. Cryobiology. 54, 19-26.
676
677 Ky, C.L., Le Pabic, L., Sham Koua, M., Molinari, N., Nakasai, S., Devaux, D., 2017. Is pearl
678 colour from *Pinctada margaritifera* predictable through shell phenotypes and rearing
679 environments selections? Aquac. Res. 48, 1041-1057.
680
681 Kurokura, H., Namba, K., Ishikawa, T., 1990. Lesions of spermatozoa by cryopreservation in
682 oyster *Crassostrea gigas*. Nippon Suisan Gakk. 56, 1803-1806.
683
684 Li, P., Li, Z.H., Dzyuba, B., Hulak, M., Rodina, M., Linhart, O., 2010a. Evaluating the
685 impacts of osmotic and oxidative stress on common carp (*Cyprinus carpio*, L.) sperm caused
686 by cryopreservation techniques. Biol. Reprod. 83, 852-858.
687
688 Li, P., Hulak, M., Koubek, P., Sulc, M., Dzyuba, B., Boryshpolets, S., Rodina, M., Gela, D.,
689 Manaskova-Postlerova, P., Peknicova, J., Linhart O., 2010b. Ice-age endurance : the effects of
690 cryopreservation on proteins of sperm of common carp, *Cyprinus carpio* L. Theriogenology.
691 74, 413-423.
692
693 Linhart, O., Rodina, M., Flajšhans, M., Gela, D., Kocour, M., 2005. Cryopreservation of
694 European catfish *Silurus glanis* sperm: sperm motility, viability, and hatching success of
695 embryos. Cryobiology. 51, 250-261.
696
697 Liu, B., Liu, Y., Liu, S., Xu, T., Liu, Q., Li, X., 2016. Cryopreservation of stripped spawned
698 sperm using non-programmable freezing technique in the blue mussel *Mytilus*
699 *galloprovincialis*. Aquac. Res. 47, 3888-3898.
700

701 Lowry, O.H., Rosenbrough, N.J., Farr, A.L., Randall, R.J., 1951. Protein measurement with
702 the Folin phenol reagent. *J. Biol. Chem.* 193, 265-275.
703

704 Lyons, L., Jerry, D.R., Southgate, P.C., 2005. Cryopreservation of black-lip pearl oyster
705 (*Pinctada margaritifera*) spermatozoa : effects of cryoprotectants on spermatozoa motility. *J.*
706 *Shellfish Res.* 24, 1187-1190.
707

708 Martínez-Páramo, S., Horváth, Á., Labbé, C., Zhang, T., Robles, V., Herráez, P., Suquet, M.,
709 Adams, S., Viveiros, A., Tiersch, T.R., Cabrita, E. 2017. Cryobanking of aquatic species.
710 *Aquaculture.* 472, 156-177.
711

712 Merino, O., Risopatrón, J., Sánchez, R., Isachenkod, E., Figueroa, E., Valdebenito, I.,
713 Isachenkod, V., 2011. Fish (*Oncorhynchus mykiss*) spermatozoa cryoprotectant-free
714 vitrification: Stability of mitochondrion as criterion of effectiveness. *Anim. Reprod. Sci.* 124,
715 125–131.
716

717 Narita, T., Kawamoto, T., Isowa, K., Aoki, H., Hayashi, M., Komaru, A., Ohta, H., 2007.
718 Effects of cryopreservation methods on post-thaw motility of spermatozoa from the Japanese
719 pearl oyster, *Pinctada fucata martensii*. *Cryobiology.* 54, 19-26.
720

721 Narita, T., Kawamoto, T., Isowa, K., Aoki, H., Hayashi, M., Komaru, A., Ohta, H., 2008.
722 Fertility of cryopreserved spermatozoa of the Japanese pearl oyster, *Pinctada fucata*
723 *martensii*. *Aquaculture.* 275, 178-181.
724

725 Pacey, A., Bentley, M., 1993. Agonists of sperm maturation in *Arenicola marina* (Annelida:
726 Polychaeta) increase the oxygen consumption of sperm suspensions *in vitro*. *Invertebr.*
727 *Reprod. Dev.* 24, 27-38.
728

729 Paniagua-Chavez, C.G., Buchanan, J.T., Tiersch, T.R., 1998. Effect of extender solutions and
730 dilution on motility and fertilizing ability of Eastern oyster sperm. *J. Shellfish Res.* 17, 231-
731 237.
732

733 Paniagua-Chávez, C.G., Tiersch, T.R., 2001. Laboratory studies of cryopreservation of sperm
734 and trochophore larvae of the eastern oyster. *Cryobiology.* 43, 211-223.
735

736 Paniagua-Chávez, C.G., Jenkins, J., Segovia, M., Tiersch, T.R., 2006. Assessment of gamete
737 quality for the eastern oyster (*Crassostrea virginica*) by use of fluorescent dyes. *Cryobiology.*
738 53, 128-138.
739

740 Pouvreau, S., Tiapari, J., Gangnery, A., Lagarde, F., Garnier, M., Teissier, H., Haumani, G.,
741 Buestel, D., Bodoy, A., 2000. Growth of the black-lip pearl oyster, *Pinctada margaritifera*, in
742 suspended culture under hydrobiological conditions of Takapoto lagoon (French Polynesia).
743 *Aquaculture.* 184, 133-154.
744

745 Psenicka, M., Dietrich, G.J., Wojtczak, M., Nynca, J., Rodina, M., Linhart, O., Cosson, J.,
746 Ciereszko, A., 2008. Acrosome staining and motility characteristics of sterlet spermatozoa
747 after cryopreservation with use of methanol and DMSO. *Cryobiology.* 56, 251-253.
748

749 Riesco, M.F., Félix, F., Matias, D., Joaquim, S., Suquet, M., Cabrita, E., 2017. First study in
750 cryopreserved *Crassostrea angulata* sperm. *Gen Comp Endocrinol.* 245, 108-115.
751
752 Sarosiek, B., Glogowski, J., Cejko, B.I., Kujawa, R., Szczepkowski, Kuźmiński, H., Dobosz,
753 S., Kowalski, R.K., 2014. Inhibition of β -N-acetylglucosaminidase by acetamide affects
754 sperm motility and fertilization success of rainbow trout (*Oncorhynchus mykiss*) and Siberian
755 sturgeon (*Acipenser baerii*). *Theriogenology.* 81, 723-732.
756
757 Saudrais, C., Fierville, F., Loir, M., Le Rumeur, E., Cibert, C., Cosson, J., 1998. The use of
758 phosphocreatine plus ADP as energy source for motility of membrane-deprived trout
759 spermatozoa. *Cell Motil. Cytoskeleton.* 41, 91-106.
760
761 Shaliutina-Kolešová, A., Cosson, J., Lebeda, I., Gazo, I., Shaliutina, O., Dzyuba, B., Linhart,
762 O., 2015. The influence of cryoprotectants on sturgeon (*Acipenser ruthenus*) sperm quality,
763 DNA integrity, antioxidant responses, and resistance to oxidative stress. *Anim. Reprod. Sci.*
764 159, 66-76.
765
766 Suquet, M., Labbé, C., Brizard, R., Donval, A., Le Coz, J.R., Quéré, C., Haffray, P., 2010.
767 Changes in motility, ATP content, morphology and fertilization capacity during the
768 movement phase of tetraploid Pacific oyster (*Crassostrea gigas*) sperm. *Theriogenology.* 74,
769 111-117.
770
771 Suquet, M., Le Mercier, A., Rimond, F., Mingant, C., Haffray, P., Labbé, C., 2012a. Setting
772 tools for the early assessment of the quality of thawed Pacific oyster (*Crassostrea gigas*) D-
773 larvae. *Theriogenology.* 78, 462-467.
774
775 Suquet, M., Cosson, J., Donval, A., Labbé, C., Bernard, I., Fauvel, C., 2012b. Marathon
776 versus sprint racers: an adaptation of sperm characteristics to the reproductive strategy of
777 Pacific oyster, turbot and seabass. *J. Appl. Ichthyol.* 28, 956-960.

778 Suquet, M., Gourtay, C., Donval, A., Le Goïc, N., Quéré, C., Malo, F., Le Grand, J., Ratiskol,
779 D., Mingant, C., Fauvel, C., 2016. The quality of great scallop (*Pecten maximus*) sperm after
780 thawing. *Gen. Comp. Endocrinol.* 229, 127-131.

781 Swann, M.A., 1975. The propulsion of the non-rotating ram and oyster spermatozoa. *Biol.*
782 *Rep.* 13, 17-29.

783 Tombes, R.M., Shapiro, B.M., 1985. Metabolite channeling: a phosphorylcreatine shuttle to
784 mediate high energy phosphate transport between sperm mitochondrion and tail. *Cell.* 41,
785 325-334.
786
787 Tombes, R.M., Brokaw, C.J., Shapiro, B.M., 1987. Creatine kinase-dependent energy
788 transport in sea urchin spermatozoa. Flagellar wave attenuation and theoretical analysis of
789 high energy phosphate diffusion. *Biophys. J.* 52, 75-86.
790
791 Tombes, R.M., Shapiro, B.M., 1989. Energy transport and cell polarity: relationship of
792 phosphagen kinase activity to sperm function. *J. Exp. Zool.* 251, 82-90.
793

794 van Dorsten, F.A., Wyss, M., Wallimann, T., Nicolay, K., 1997. Activation of sea-urchin
795 sperm motility is accompanied by an increase in the creatine kinase exchange flux. *Biochem.*
796 *J.* 325, 411-416.
797

798 Viveiros A.T., Leal M.C., 2016. Sperm dilution ratio affects post-thaw motility rate and
799 velocity of *Prochilodus lineatus* (Characiformes) sperm. *Zygote.* 24, 662-667.
800

801 Viveiros A.T., Di Chiacchio I.M., Almeida I.L., Taffarel T.R., Leal M.C., 2017. Storage and
802 transportation of *Prochilodus lineatus* (Characiformes) sperm prior to cryopreservation. *Gen.*
803 *Comp. Endocrinol.* 245, 84-88.
804

805 Wallimann, T., Moser, H., Zurbriggen, B., Wegmann, G., Eppenberger, H.M., 1986. Creatine
806 kinase isoenzymes in spermatozoa. *J. Muscle Res. Cell Motil.* 7, 25-34.
807

808 Wallimann, T., Hemmer, W., 1994. Creatine kinase in non-muscle tissues and cells. *Mol.*
809 *Cell. Biochem.* 133-134, 193-220.
810

811 Wallimann, T., Tokarska-Schlattner, M., Schlattner, U., 2011. The creatine kinase system and
812 pleiotropic effects of creatine. *Amino Acids.* 40, 1271-1296.
813

814 Wilson-Leedy, J.G., Ingermann, R.L., 2007. Development of a novel C.A.S.A. system based
815 on open source software for characterization of zebrafish sperm motility parameters.
816 *Theriogenology.* 67, 661-672.
817

818 Yang, H., Hu, E., Cuevas-Urbe, R., Supan, J., Guo, X., Tiersch, T., 2012. High-throughput
819 sperm cryoconservation of eastern oyster *Crassostrea virginica*. *Aquaculture.* 344-349, 223-
820 230.
821

822 Yankson, K., Moyse, J., 1991. Cryopreservation of the spermatozoa of *Crassostrea tulipa* and
823 other three oysters. *Aquaculture.* 97, 259-267.
824

825 Yurchenko, O., 2012. Comparative ultrastructural study of spermatozoa in some oyster
826 species from the Asian-Pacific Coast. *Micron.* 43, 365-373.

827 Zilli, L., Schiavone, R., Zonno, V., Storelli, C., Vilella, S., 2004. Adenosine triphosphate
828 concentration and β - D glucuronidase activity as indicators of sea bass semen quality. *Biol.*
829 *Reprod.* 70, 1679-1684.

830 **Tables**

831

832 **Table 1**

833 **Calibration parameters applied to determine concentration and morphological**
834 **characteristics of spermatozoa using the Image J software (Wilson-Leedy and**
835 **Ingermann 2007).**

836

Parameters	Values
Counting surface (mm ²)	0.05
Scale (pixels/mm ²)	6000
Minimum sperm size (pixels)	1
Maximum sperm size (pixels)	40
Circularity	0-1

837

838

839

840

841

842

843

844

845

846

847

848 **Table 2**

849 **Sperm tracking values applied in the dialog box generated by CASA within Image J**

850 **according to Wilson-Leedy and Ingermann (2007).** Values were adapted to *Pinctada*

851 *margaritifera* sperm for sperm path construction and determination of motility of fresh and

852 frozen/thawed spermatozoa. VSL = straight line velocity, VAP = velocity of average path,

853 VCL = curvilinear velocity, WOB = wobble and LIN = linearity.

854

Parameters	Values
Minimum sperm size (pixels)	0
Maximum sperm size (pixels)	40
Minimum track length (frames)	25
Maximum sperm velocity between frames (pixels)	15
Minimum VSL for motile sperm ($\mu\text{m sec}^{-1}$)	2
Minimum VAP for motile sperm ($\mu\text{m sec}^{-1}$)	5

Minimum VCL for motile sperm ($\mu\text{m sec}^{-1}$)	8
Low VAP speed ($\mu\text{m sec}^{-1}$)	5
Maximum percent of path with zero VAP	1
Maximum percent of path with low VAP	50
Low VAP speed 2 ($\mu\text{m sec}^{-1}$)	8
Low VCL speed ($\mu\text{m sec}^{-1}$)	10
High WOB (percent VAP/VCL)	80
High LIN (percent VSL/VAP)	80
High WOB 2 (percent VAP/VCL)	200
High LIN 2 (percent VSL/VAP)	200
Frame rate (frame sec^{-1})	25
Microns per 1000 pixels	312

855

856

857

858

859

860

861

862

863

864

865 **Table 3**

866 **Effect of the cryopreservation on morphological characteristics of black-lip pearl oyster**

867 **spermatozoa.** Values represent mean \pm SEM calculated for n = 28 fresh samples and n = 18

868 frozen/thawed samples. Different superscripts indicate significant differences ($P < 0.05$)

869 between fresh and frozen/thawed spermatozoa.

870

Morphological characteristic	Fresh spermatozoa	Frozen-thawed spermatozoa
Area (μm^2)	3.41 \pm 0.18 ^a	1.31 \pm 0.08 ^b

Crofton perimeter (μm)	7.08 ± 0.22^c	4.30 ± 0.14^d
Feret diameter (μm)	2.45 ± 0.06^e	1.590 ± 0.053^f
Circularity	0.87 ± 0.03^g	0.85 ± 0.03^g
Feret perimeter/Crofton perimeter	0.346 ± 0.004^h	0.369 ± 0.004^h

871

872

873

874

875

876

877

878

879

880

881

882 **Table 4**

883 **Effect of cryopreservation on black-lip pearl oyster sperm movement.** Motility
884 parameters were measured using computer-assisted sperm analyzer (CASA) plug-in, for
885 Image J software (Wilson-Leedy and Ingermann 2007) and adapted to *P. margaritifera*
886 spermatozoa (see methods). Values represent means \pm SEM, calculated for n =28 fresh samples
887 and n = 18 frozen/thawed samples. Different superscripts indicate significant differences ($P <$
888 0.05) between fresh and frozen/thawed spermatozoa. VSL = straight line velocity, VAP =
889 average path velocity and LIN = linearity.

890

891

Motility parameter	Fresh	Frozen-thawed
Sperm motility (%)	84.7±3.7 ^a	54.4±6.2 ^b
VSL ($\mu\text{m sec}^{-1}$)	66.6±2.7 ^c	62.5±4.8 ^c
VAP ($\mu\text{m s}^{-1}$)	165.7±7.7 ^d	131.5±7.1 ^e
LIN (%)	40.6±0.1 ^f	49.1±0.1 ^f

892

893

894

895

896

897

Figure captions

Fig. 1

Effects of cryopreservation on black-lip pearl oyster spermatozoon morphology by transmission electron microscopy (n=3).

1a-d : fresh spermatozoon and 1e-h : frozen-thawed spermatozoon. (a) longitudinal section of fresh spermatozoon. a = acrosome, dc = distal centriole, pc = proximal centriole, f = flagella, mi = mitochondria, n = nucleus. (b) cross-section of mid piece, mi = mitochondria. (c) longitudinal section of acrosome (white arrow = dense material, black arrow = flat cap), a = acrosome, n = nucleus. (d) longitudinal section of flagellum (white arrow = central microtubules, black arrows = peripheral microtubules), f = flagella. (e) longitudinal section of frozen/thawed spermatozoon (arrows = lift of plasma membrane), a = acrosome, mi = mitochondria, n = nucleus. (f) longitudinal section of spermatozoon (dashed arrow = lift of plasma membrane, white arrow = central microtubules, black arrow = peripheral microtubules), pc = proximal centriole, n = nucleus. (g) longitudinal section of acrosome (arrow = flat cap disruption), a = acrosome, n = nucleus. (h) longitudinal section of frozen-thawed spermatozoon (white arrow = central microtubules, black arrows = peripheral microtubules), f = flagella, a = acrosome, mi = mitochondria, n = nucleus, pc = proximal centriole, dc = distal centriole.

Fig. 2

Effect of cryopreservation on *P. margaritifera* spermatozoon motility.

Measurements were performed using the CASA. Values represent means \pm SEM calculated for n = 28 fresh samples and n = 18 frozen/thawed samples. «a» indicates significant difference ($P < 0.05$) between fresh and frozen-thawed sperm.

Fig. 3

Relationship of motility of fresh spermatozoa and frozen/thawed spermatozoa in black-lip pearl oyster *P. margaritifera*.

Samples obtained from 18 males were used to assess the motility of fresh and frozen/thawed spermatozoa. Values represent percent motility ($y = 0.5991x + 3.6926$; $R^2 = 0.5962$; $P < 0.05$; n = 18)

Fig. 4

Effect of cryopreservation on sperm metabolism and energetic stock

4a Oxygen consumption of black-lip pearl oyster spermatozoa in alkaline activating solution, DCSB₄.

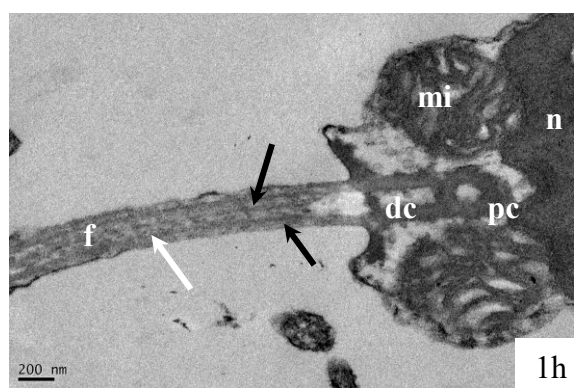
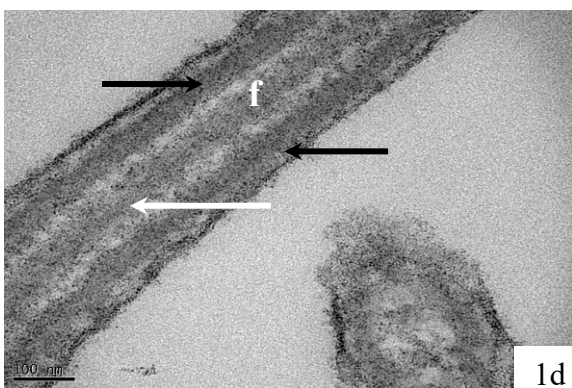
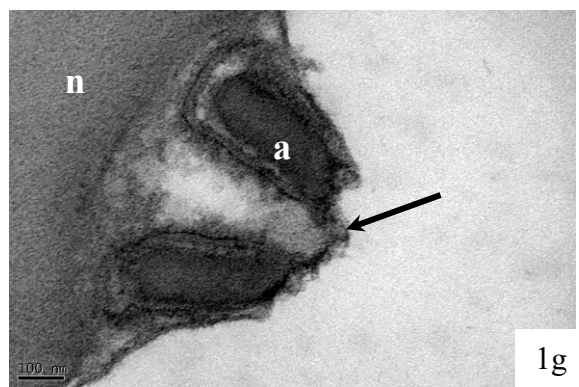
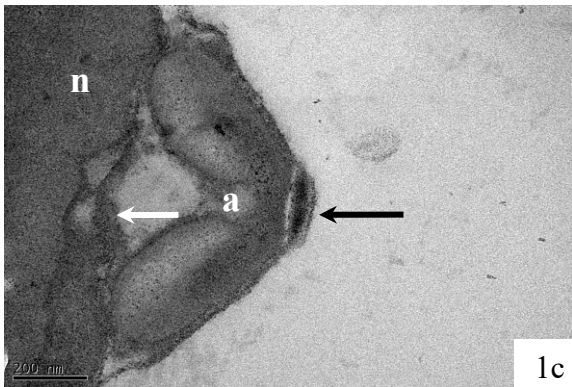
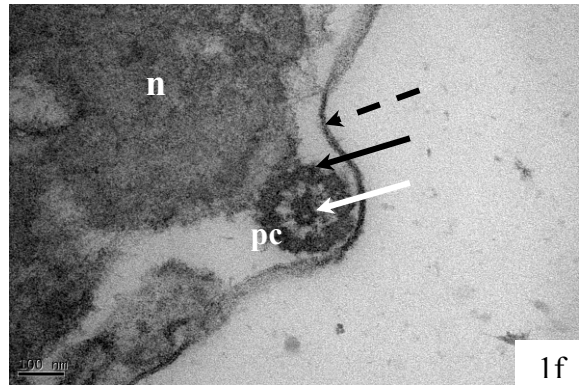
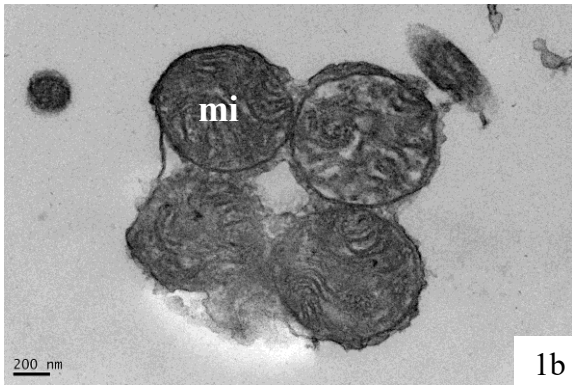
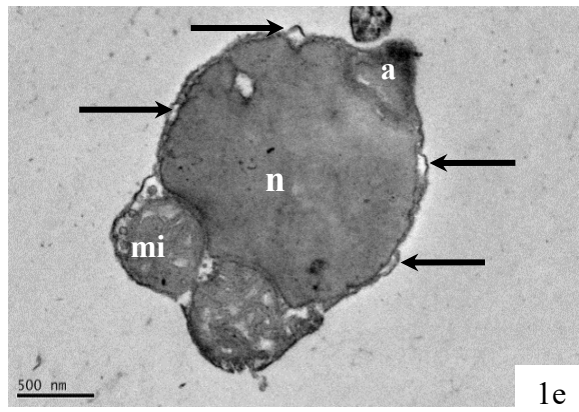
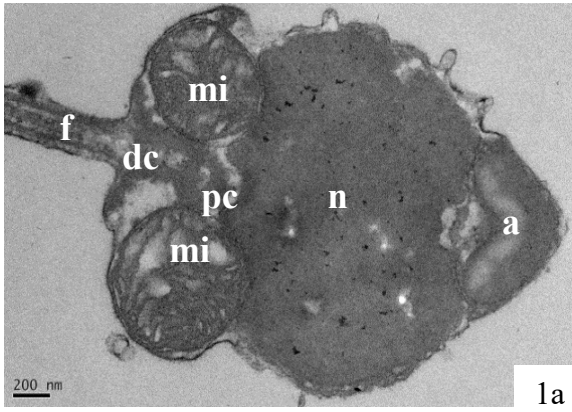
Values represent means \pm SEM calculated for 28 fresh samples and 18 frozen/thawed samples. «a» = significant difference ($P < 0.05$) with/without activation, between fresh and frozen-thawed spermatozoa. «b» = significant difference ($P < 0.05$) between fresh and frozen/thawed spermatozoa.

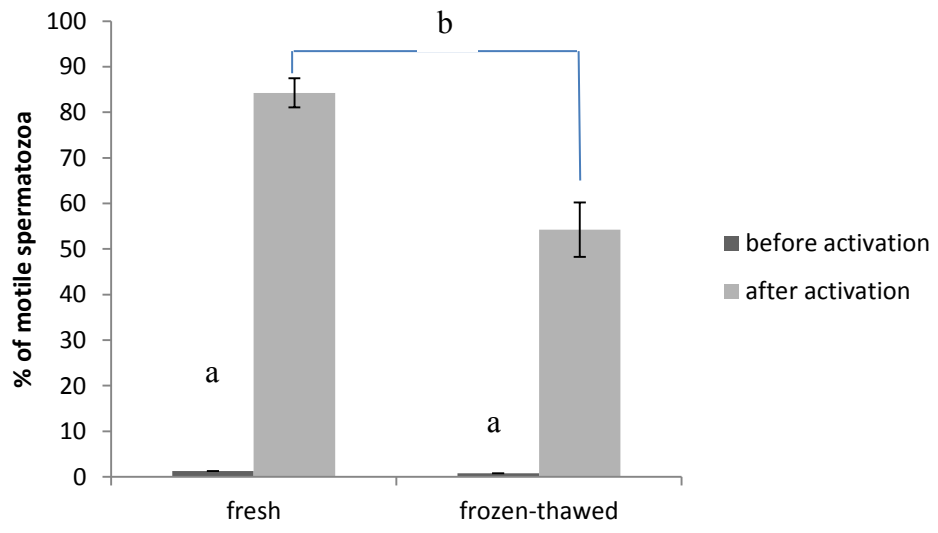
4b ATP content with and without activation in DCSB₄.

Values represent means \pm SEM calculated for 28 fresh sperm samples and 18 frozen/thawed samples. «a» = significant difference ($P < 0.05$) in ATP content depending on swimming media in fresh and frozen/thawed spermatozoa. «b» = significant difference ($P < 0.05$) between fresh and frozen/thawed sperm.

4c Creatine kinase activity.

Values represent means \pm SEM calculated for 28 fresh sperm samples and 18 frozen/thawed samples. «a» = significant difference ($P < 0.05$) between fresh and frozen/thawed spermatozoa.





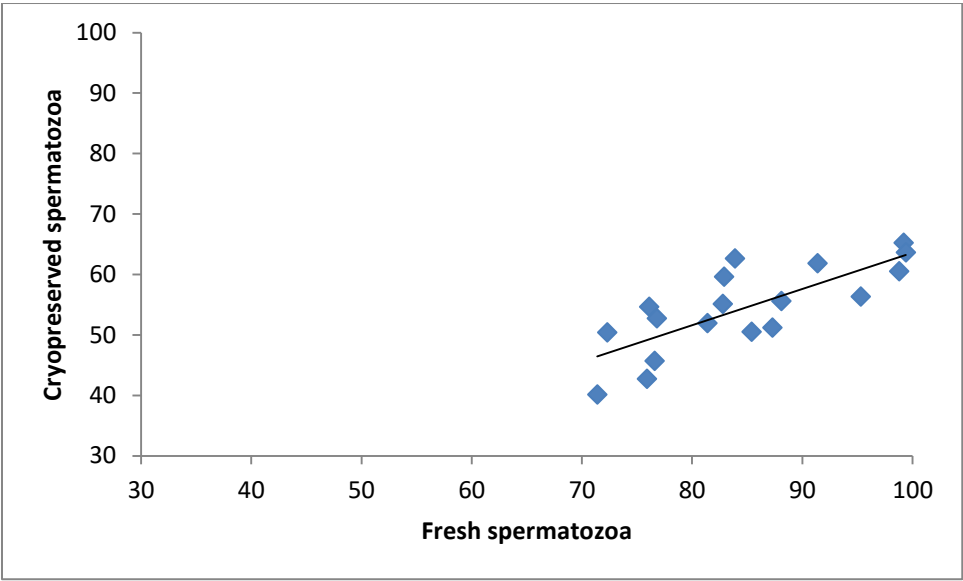


Figure 4a

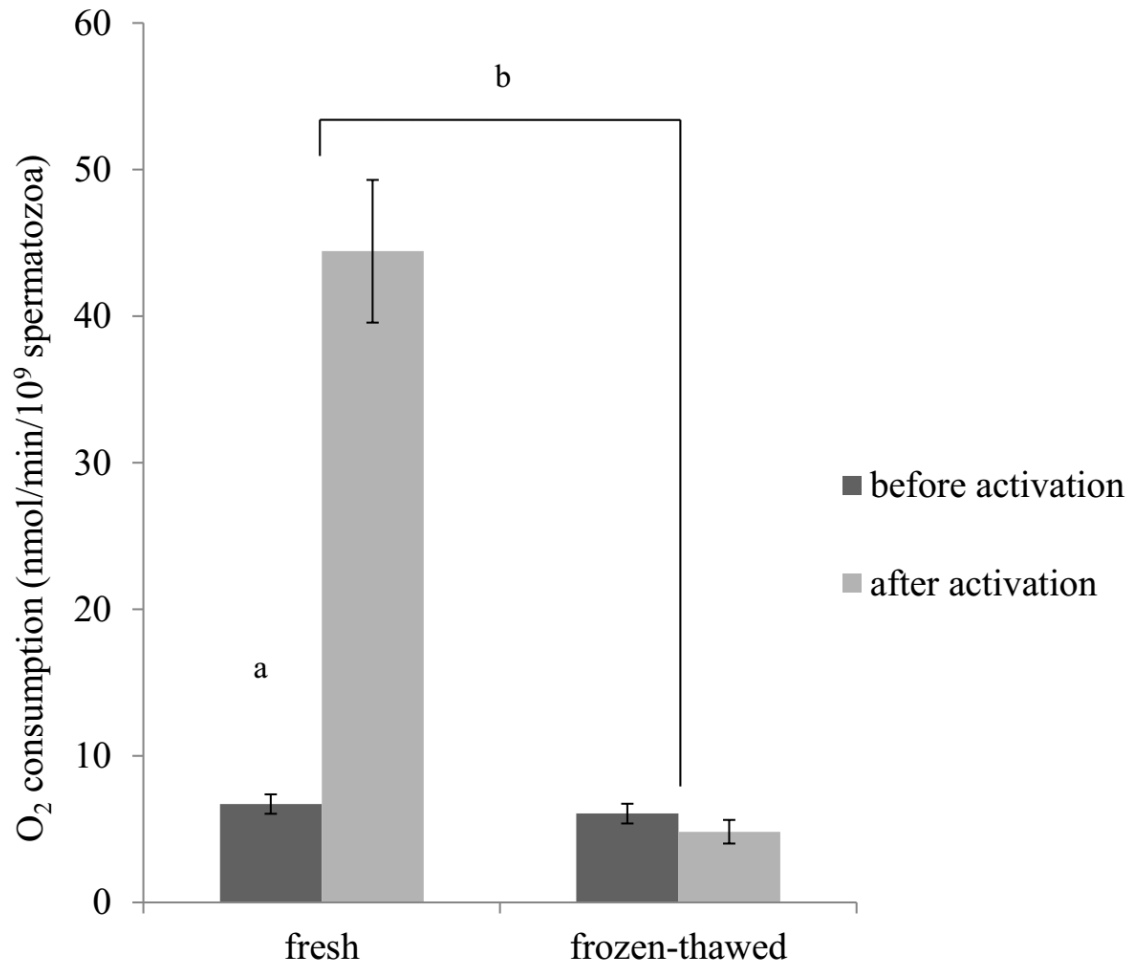


Figure 4b

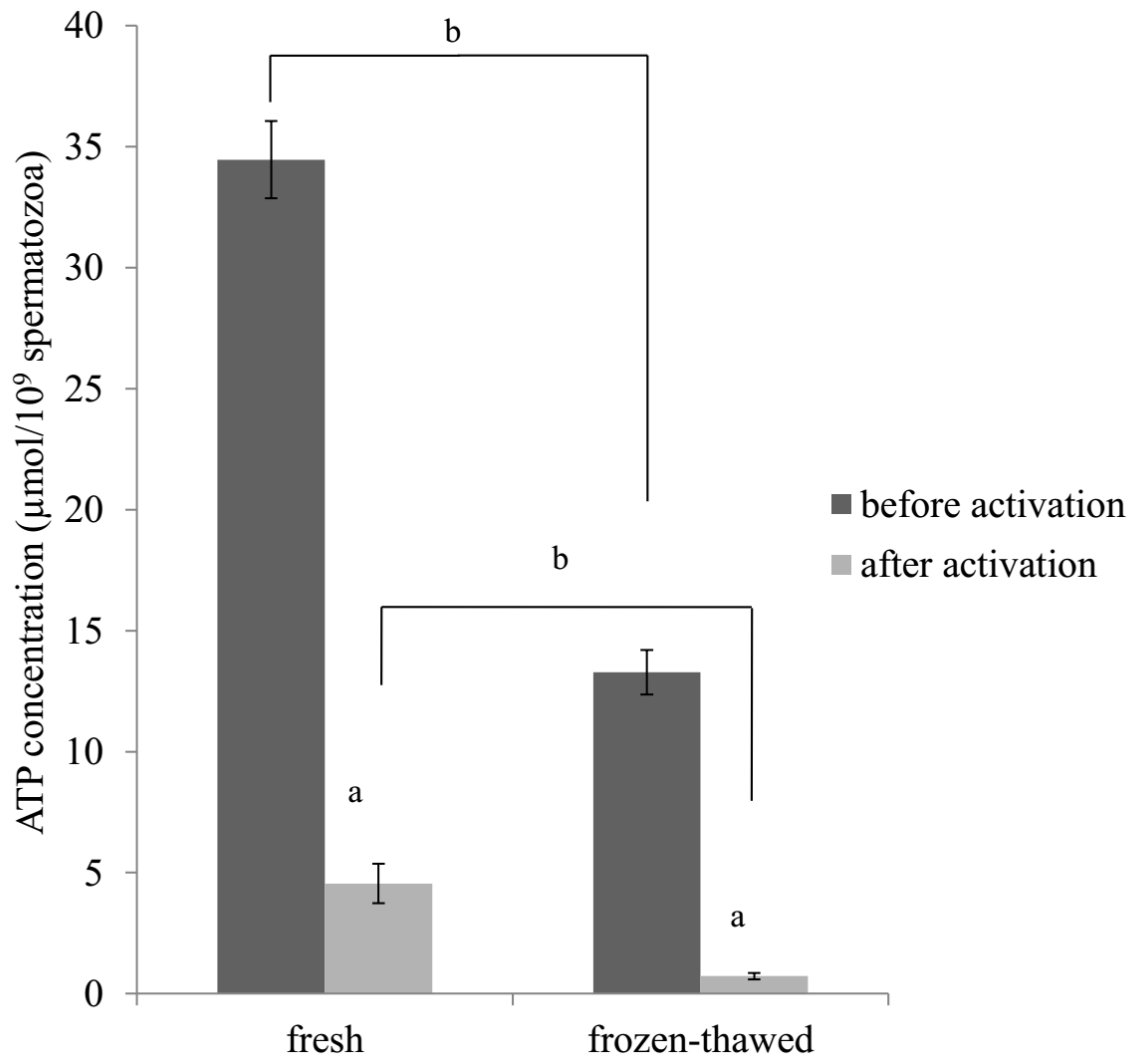


Figure 4c

