



**HAL**  
open science

## Regional evaluation of rock glacier activity in the semi-arid Andes using optical and radar satellite imagery

Xavier Bodin, Thomas Echelard, Pascal Lacroix, Tazio Strozzi

### ► To cite this version:

Xavier Bodin, Thomas Echelard, Pascal Lacroix, Tazio Strozzi. Regional evaluation of rock glacier activity in the semi-arid Andes using optical and radar satellite imagery. EUCP 2018 - 5th European Conference on Permafrost, Jun 2018, Chamonix, France. hal-01887851

**HAL Id: hal-01887851**

**<https://hal.science/hal-01887851>**

Submitted on 12 Oct 2021

**HAL** is a multi-disciplinary open access archive for the deposit and dissemination of scientific research documents, whether they are published or not. The documents may come from teaching and research institutions in France or abroad, or from public or private research centers.

L'archive ouverte pluridisciplinaire **HAL**, est destinée au dépôt et à la diffusion de documents scientifiques de niveau recherche, publiés ou non, émanant des établissements d'enseignement et de recherche français ou étrangers, des laboratoires publics ou privés.

## Regional evaluation of rock glacier activity in the semi-arid Andes using optical and radar satellite imagery

Xavier Bodin<sup>1</sup>, Thomas Echelard<sup>2</sup>, Pascal Lacroix<sup>3</sup>, Tazio Strozzi<sup>4</sup>

<sup>1</sup>Univ. Grenoble Alpes, Univ. Savoie Mont Blanc, CNRS, EDYTEM, Chambéry, France, [xavier.bodin@univ-smb.fr](mailto:xavier.bodin@univ-smb.fr)

<sup>2</sup>Cartodia, Grenoble, France

<sup>2</sup>Univ. Grenoble Alpes, IRD, CNRS, ISTerre, Grenoble, France

<sup>3</sup>Gamma Remote sensing, Switzerland

### Abstract

As evidenced by existing inventories, the semi-arid Andes (Chile and Argentina) has a high density of active rock glaciers and host some of the largest ones in the world. The movement of rock glaciers, which is crucial for understanding the effects of climate on mountain cryosphere, remains largely based on subjective interpretation of geomorphological signs visible on ortho-imagery. In order to get a regional assessment of rock glacier's activity levels, we combined two type of satellite imagery, Synthetic Aperture Radar and optical. Both SAR-derived interferograms and maps of displacement derived from optical image correlation were used to evaluate to mean activity level of more than 200 active rock glaciers. Base on this, a geospatial analysis was performed to assess the main controlling factor on the rock glaciers kinematic.

**Keywords:** rock glaciers; surface movements; remote sensing; SAR; image correlation; Andes.

### Introduction

In the present context of Climate change, rock glaciers dynamics have potential consequences for the stability of mountain slopes (Huggel *et al.*, 2012). In the Andes, similarly to the Alps, cases of rock glacier destabilization have been observed (Bodin *et al.*, 2012). Between 29 and 34°S, more than 8000 fresh rock glaciers have been mapped by official Chilean and Argentinian authorities (IANIGLA, 2010; UGP-UC, 2011). In those inventories, the activity status of rock glaciers has been assessed based on ortho-imagery, implying subjectivity-related biases.

To overcome this limitation, we combined optical and radar satellite imagery (acquired between 2012 and 2017), from which we derived maps of SAR phase difference (TerraSAR-X) and of horizontal surface displacement (Landsat).

### Study area and datasets

Our study area covers almost 3000 km<sup>2</sup>, around 29-30°S, and has a median elevation of 4120 m asl. With a mean elevation of 4500 m asl, 321 rock glaciers are present, covering a total of 34 km<sup>2</sup>.

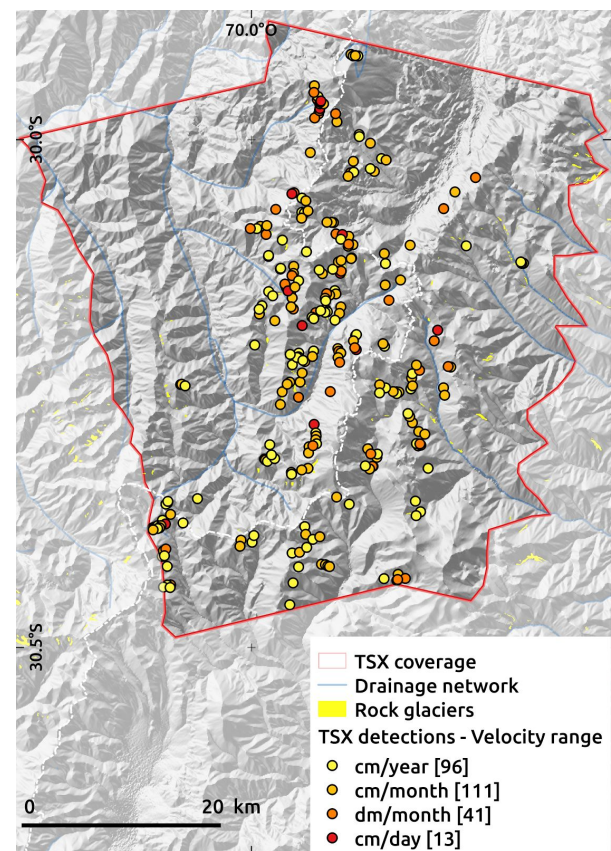


Figure 1: Velocity levels detected on rock glaciers with the interpretation of TSX-derived interferograms.

Following Barboux *et al.* (2014) procedure, we first interpreted the TSX interferograms overlaid with ortho-imagery in a GIS. Over 261 rock glaciers with SAR-derived interpretation, 54 show relatively fast surface velocity, higher than 2 m/yr (Figure 1).

Landsat images from between 2013 and 2017 were processed with image correlation technique (Zerathe *et al.*, 2016) to derive horizontal displacements over the area (Figure 2).

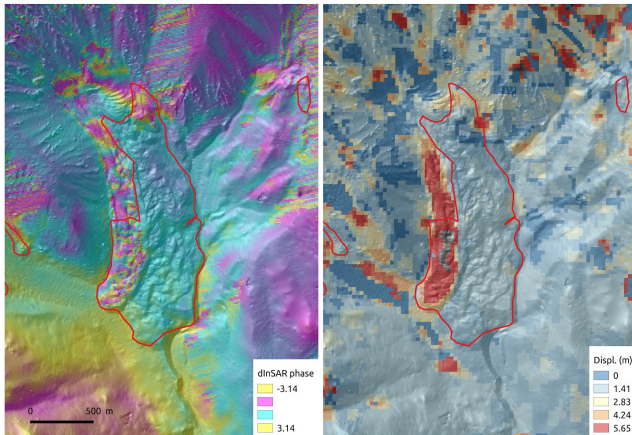


Figure 2: Comparison between SAR phase signal from a 11-day interferogram (left panel) and horizontal displacements derived from Landsat images of 2013 and 2017 (right panel) on an active rock glacier.

## Results

Deriving topographic attributes from TanDEM-X 12-m DEM, no clear dependency between velocity and elevation nor slope was found. The clearest control on the rock glaciers velocity range seems to be the solar radiation, with lower values on slow rock glaciers and higher ones on the fastest (Figure 3).

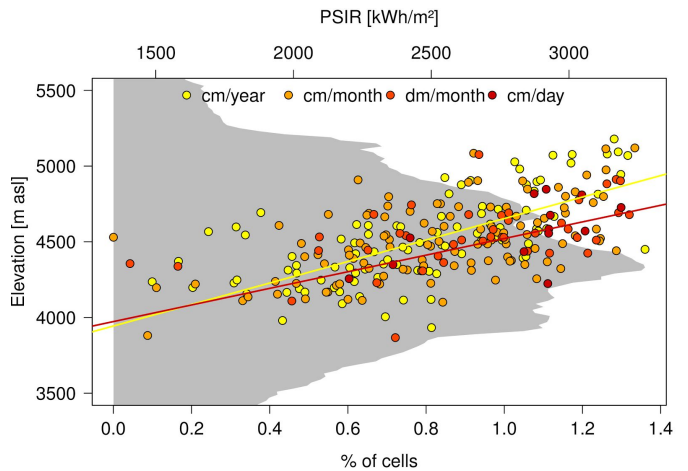


Figure 3: Hypsography of the study area and XY plot of elevation VS potential solar incoming radiation (PSIR).

## Outlook

At the moment of writing this abstract, the processing of the optical imagery have not yet be fully completed. The resolution of the Landsat images (15m) is a clear limitation, though the large time span should allow producing horizontal displacement maps for the fastest rock glaciers of the study area, and to compare these maps with the TSX interpretations.

## References

- Bodin, X., Krysiecki, J.-M., Iribarren Anacona, P., 2012. Recent collapse of rock glaciers: two study cases in the Alps and in the Andes, in: *Proceedings of the 12th Congress INTERPRAEVENT*. Grenoble, pp. 2–3.
- Huggel, C., Clague, J.J., Korup, O., 2012. Is climate change responsible for changing landslide activity in high mountains? *Earth Surf. Proc. and Landf.* 37, 77–91.
- IANIGLA. *Inventario Nacional de Glaciares Y Ambiente Periglacial: Fundamentos Y Cronograma de Ejecución*. Mendoza; 2010.
- UGP-UC. *Dinámica de Glaciares Rocosos En El Chile Semiárido*. Unidad de glaciología y nieves, DGA/MOP, Santiago; 2011.
- Zerathe, S., Lacroix, P., Jongmans, D., Marino, J., Taïpe, E., Wathelet, M., Pari, W., Smoll, L.F., Norabuena, E., Guillier, B., Tatard, L., 2016. Morphology, structure and kinematics of a rainfall controlled slow-moving Andean landslide, Peru: The Maca slow-moving Andean landslide. *Earth Surf. Proc. and Landf.* 41, 1477–1493.