



**HAL**  
open science

# Combining a Two Source Energy Balance Model Driven by MODIS and MSG-SEVIRI Products with an Aggregation Approach to Estimate Turbulent Fluxes over Sparse and Heterogeneous Vegetation in Sahel Region (Niger)

Bouchra Hssaine, Jamal Ezzahar, Lionel Jarlan, Olivier Merlin, Said Khabba, Aurore Brut, Salah Er-Raki, Jamal Elfarkh, Bernard Cappelaere, Ghani Chehbouni

## ► To cite this version:

Bouchra Hssaine, Jamal Ezzahar, Lionel Jarlan, Olivier Merlin, Said Khabba, et al.. Combining a Two Source Energy Balance Model Driven by MODIS and MSG-SEVIRI Products with an Aggregation Approach to Estimate Turbulent Fluxes over Sparse and Heterogeneous Vegetation in Sahel Region (Niger). *Remote Sensing*, 2018, 10 (6), 10.3390/rs10060974 . hal-01887460

**HAL Id: hal-01887460**

**<https://hal.science/hal-01887460v1>**

Submitted on 17 Dec 2020

**HAL** is a multi-disciplinary open access archive for the deposit and dissemination of scientific research documents, whether they are published or not. The documents may come from teaching and research institutions in France or abroad, or from public or private research centers.

L'archive ouverte pluridisciplinaire **HAL**, est destinée au dépôt et à la diffusion de documents scientifiques de niveau recherche, publiés ou non, émanant des établissements d'enseignement et de recherche français ou étrangers, des laboratoires publics ou privés.



Article

# Combining a Two Source Energy Balance Model Driven by MODIS and MSG-SEVIRI Products with an Aggregation Approach to Estimate Turbulent Fluxes over Sparse and Heterogeneous Vegetation in Sahel Region (Niger)

Bouchra Ait Hssaine <sup>1,\*</sup>, Jamal Ezzahar <sup>2,\*</sup>, Lionel Jarlan <sup>3</sup>, Olivier Merlin <sup>3</sup>, Said Khabba <sup>1</sup>, Aurore Brut <sup>3</sup> , Salah Er-Raki <sup>4</sup>, Jamal Elfarkh <sup>4</sup>, Bernard Cappelaere <sup>5</sup> and Ghani Chehbouni <sup>3</sup>

<sup>1</sup> LMME Département de physique, Faculté des sciences Semlalia, Université Cadi Ayyad, 40000 Marrakech, Morocco; khabba@uca.ac.ma

<sup>2</sup> Equipe de Mathématiques et Traitement de l'Information (MTI), Ecole Nationale des Sciences Appliquées (ENSA), 46000 Safi, Morocco

<sup>3</sup> Centre d'Etudes Spatiales de la Biosphère, Université de Toulouse, CNES, CNRS, IRD, UPS, 31400 Toulouse, France; lionel.jarlan@cesbio.cnes.fr (L.J.); olivier.merlin@cesbio.cnes.fr (O.M.); aurore.brut@cesbio.cnes.fr (A.B.); ghani.chehbouni@ird.fr (G.C.)

<sup>4</sup> LP2M2E, Faculté des Sciences et Techniques, Université Cadi Ayyad, 40000 Marrakech, Morocco; s.erraki@uca.ma (S.E.-R.); jamal.elfarkh@gmail.com (J.E.)

<sup>5</sup> HydroSciences Montpellier, Université de Montpellier, CNRS, IRD, 34000 Montpellier, France; bernard.cappelaere@ird.fr

\* Correspondence: bouchraaitssaine@gmail.com (B.A.H.); j.ezzahar@uca.ma (J.E.); Tel.: +212-678-16-7863 (B.A.H.)

Received: 16 May 2018; Accepted: 12 June 2018; Published: 19 June 2018



**Abstract:** Estimates of turbulent fluxes (i.e., sensible and latent heat fluxes H and LE) over heterogeneous surfaces is not an easy task. The heterogeneity caused by the contrast in vegetation, hydric and soil conditions can generate a large spatial variability in terms of surface–atmosphere interactions. This study considered the issue of using a thermal-based two-source energy model (TSEB) driven by MODIS (Moderate resolution Imaging Spectroradiometer) and MSG (Meteosat Second Generation) observations in conjunction with an aggregation scheme to derive area-averaged H and LE over a heterogeneous watershed in Niamey, Niger (Wankama catchment). Data collected in the context of the African Monsoon Multidisciplinary Analysis (AMMA) program, including a scintillometry campaign, were used to test the proposed approach. The model predictions of area-averaged turbulent fluxes were compared to data acquired by a Large Aperture Scintillometer (LAS) set up over a transect about 3.2 km-long and spanning three vegetation types (millet, fallow and degraded shrubs). First, H and LE fluxes were estimated at the MSG-SEVIRI grid scale by neglecting explicitly the subpixel heterogeneity. Moreover, the impact of upscaling the model's inputs was investigated using in-situ input data and three aggregation schemes of increasing complexity based on MODIS products: a simple averaging of inputs at the MODIS resolution scale, another simple averaging scheme that considers scintillometer footprint extent, and the weighted average of inputs based on the footprint weighting function. The H and LE simulated using the footprint weighted method were more accurate than for the two other aggregation rules despite the heterogeneity of the landscape. The statistical values are: correlation coefficient (R) = 0.71, root mean square error (RMSE) = 63 W/m<sup>2</sup> and mean bias error (MBE) = −23 W/m<sup>2</sup> for H and an R = 0.82, RMSE = 88 W/m<sup>2</sup> and MBE = 45 W/m<sup>2</sup> for LE. This study opens perspectives for the monitoring of convective and evaporative fluxes over heterogeneous landscape based on medium resolution satellite products.

**Keywords:** TSEB model; aggregation schemes; MODIS; SEVIRI; non-uniform and heterogeneous surfaces; regional surfaces fluxes; scintillometry

---

## 1. Introduction

The Sahelian region is one of the most vulnerable areas to climate variability and change due to the scarcity of water resources, associated with a high evaporative demand and low and irregular rainfall. The understanding of the interaction between regional climate and the hydrological cycle has substantially advanced through several research projects conducted over this region in recent years (HAPEX-Sahel [1] and AMMA [2]). Among the key surface processes impacting thermo-hydric characteristics of the low atmosphere, the regional exchange of water and energy at the soil–vegetation–atmosphere continuum is of prime importance for weather forecasting and climate studies [3–5].

Within this context, several land surface models have been developed to estimate the evapotranspiration (ET). These models are classified into three different categories: (i) conceptual models that are diagnostic and do not incorporate temporal information about the surface state such as the FAO-56 approach [6] which provides only a daily estimation of the evapotranspiration by modeling the evaporative function based on an empirical coefficient; (ii) surface energy balance (SEB) models which calculate ET as a residual term of the surface energy balance (TSEB [7], Mapping EvapoTranspiration at high Resolution with Internalized Calibration (METRIC) [8], and SEBS [9]); and (iii) the mechanistic models which resolve both water and energy budget equations in coupled manner and are often called soil–vegetation–atmosphere transfer models (SVAT models) such as Suivi de l'Etat Hydrique des Sols (SEtHyS) [10], Interaction Soil Biosphere Atmosphere (ISBA) [11], a Simple Soil-Plant-Atmosphere Transfer model (SiSPAT) [12] and the Interactive Canopy Radiation Exchange (ICARE) [13]. The latter can simulate directly the temporal evolution of two surface state variables (soil moisture and land surface temperature) and thus ET. However, contrary to the SEB models, SVAT models need more inputs parameters and data which are not always measurable, especially over heterogeneous surfaces. Especially, a good knowledge of water inputs by precipitation and irrigation is not needed for SEB approaches. This represents a significant advantage in semi-arid areas characterized by sparse meteorological networks and high spatio-temporal variability of precipitation.

In addition to meteorological data, the surface main driver of SEB models is the land surface temperature ( $T_s$ ). For several applications, in particular large-scale hydrological studies, the spatial heterogeneity of the processes, which results in variability of  $T_s$  and other input parameters and variables (such as albedo, LAI, the roughness length ( $z_0$ ), etc.), needs to be carefully characterized to predict correctly regional H and LE. This is not possible on heterogeneous areas with network of point-sampling devices such as the precision infrared temperature sensor (IRTS-Ps and Apogee) for surface temperature because of the limited representivity of these in-situ measurements. In this regard, remotely sensed data can be a valuable tool to provide representative values of these measurements [14,15]. With the existing sensors, the only  $T_s$  products able to sample the high intra- and inter-daily dynamics of  $T_s$  are provided either by geostationary or by medium-scale sun-synchronous sensors. Indeed, geostationary sensors such as the Meteosat Second Generation—The Spinning Enhanced Visible and InfraRed Imager (MSG SEVIRI) can provide regional scale of  $T_s$  with temporal sampling from 15 min to 1 h with a resolution of about 3 km. The use of MSG SEVIRI data to monitor vegetation or land surface vegetation related processes has been limited until now. Sandholt et al. [16] used SEVIRI data as an input to a regional hydrological model; Fensholt et al. [17] investigated diurnal SEVIRI NDVI for the African continent; and Stisen et al. [18] estimated regional ET from SEVIRI data. More recent studies have demonstrated the potential of SEVIRI data for evapotranspiration modeling [19–21] and drought and water stress monitoring [22,23]. In contrast with MSG SEVIRI, sun-synchronous satellites such as the MODIS sensor (Moderate resolution Imaging

Spectroradiometer) provide data with a spatial resolution of about 1 km and a daily revisit time. Within this context, the question arises if LE over heterogeneous landscape can be monitored directly at large scale using geostationary data or if sub-pixel heterogeneity should be described, in particular by taking advantage of the finer resolution of sun-synchronous products and aggregation approaches.

In this study, a SEB model driven by MSG SEVIRI and MODIS observations in conjunction with an aggregation scheme is used to estimate H and LE over a transect of about 3.2 km located at the Wankama Catchment (Niger) [24–29]. A spatial aggregation approach is conceived as a method which seeks to link the model parameters that control surface exchange ( $T_s$ ,  $\alpha$ ,  $d$ ,  $z_0$ , LAI, and  $h_c$ ) on a patch scale with the area-average value of equivalent model parameters applicable on a larger scale or grid-scale, assuming that the same equations are used to describe surface fluxes at both scales [27,30–34]. In general, aggregation schemes can be applied on the input requirements [27] or directly to predicted fluxes [35]. Nevertheless, the efficiency of this approach lies on the evaluation of their outputs/performances against field observations, which require the development of a measurement network at the local scale such as Eddy covariance systems [36–39]. Such a system is very costly, and manpower demanding with a competent staff for data processing and maintenance, as well as an important energy supply for operation. To overcome these difficulties, Large Aperture Scintillometer (LAS) is one of the alternative techniques employed to validate the satellite remote sensing H and LE estimates due to the comparable spatial resolutions. It has already been used in various contexts over complex topography and heterogeneous vegetation cover [27,40,41]. Consequently, LAS is becoming popular in hydro-meteorological studies because it is relatively cheap, robust, and easy to operate and maintain. Additionally, the LAS can be potentially used to improve the representation of surface heterogeneity in land-surface–atmosphere models operating at large scales.

In this study, the thermal-based two-source energy balance (TSEB) [7] was chosen as it has been evaluated with success in different contexts including sparse canopy in semi-arid areas [42–44]. As far as we know, the TSEB model has never been tested over a heterogeneous Sahelian agro-ecosystem. Therefore, a validation at patch scale was firstly investigated using in-situ measurements from three eddy-covariance stations sampling the dominating canopy (millet, fallow and degraded shrubs) of the studied area. TSEB predictions of the convective fluxes were then evaluated at the scintillometer footprint scale by aggregating the station scale predictions fed by the in-situ observations of albedo,  $T_s$  and Leaf area index (LAI). In a second step, remote sensing products were used. A first evaluation was directly conducted at the scale of the scintillometer measurements by using 3 km  $T_s$  observations from the MSG SEVIRI instrument. Finally, three aggregation schemes of MODIS products were tested to assess if a better representation of heterogeneity based on the 1-km products improves our large-scale estimates.

## 2. Data and Methods

This section describes the experimental data and the satellite products, the two-source energy balance model together with the aggregation approaches. All variables used in this study are listed in Table 1.

**Table 1.** List of variables used in the study.

Symbol	Description	Unit	Value
$C_n^2$	The refractive index of air	$m^{-2/3}$	
$C_T^2$	The structure parameters of temperature	$K^2 m^{-2/3}$	
$C_q^2$	The structure parameters of Humidity	$kg^2 m^{-6} m^{-2/3}$	
$C_{Tq}$	The structure parameters of the covariant term	$K kg m^{-3} m^{-2/3}$	
$C_p$	The specific heat of air at constant pressure	$J kg^{-1} K^{-1}$	1006
$d$	The displacement of reference plan	m	
$f_c$	The vegetation cover fraction	(-)	
$f_g$	The fraction of leaf area index (LAI) that is green	(-)	1
$H_{soil}$	The soil sensible heat flux	$W m^{-2}$	
$H_{veg}$	The vegetation sensible heat flux	$W m^{-2}$	
$hc$	The canopy height	m	
$G$	The surface soil heat flux	$W m^{-2}$	

**Table 1. Cont.**

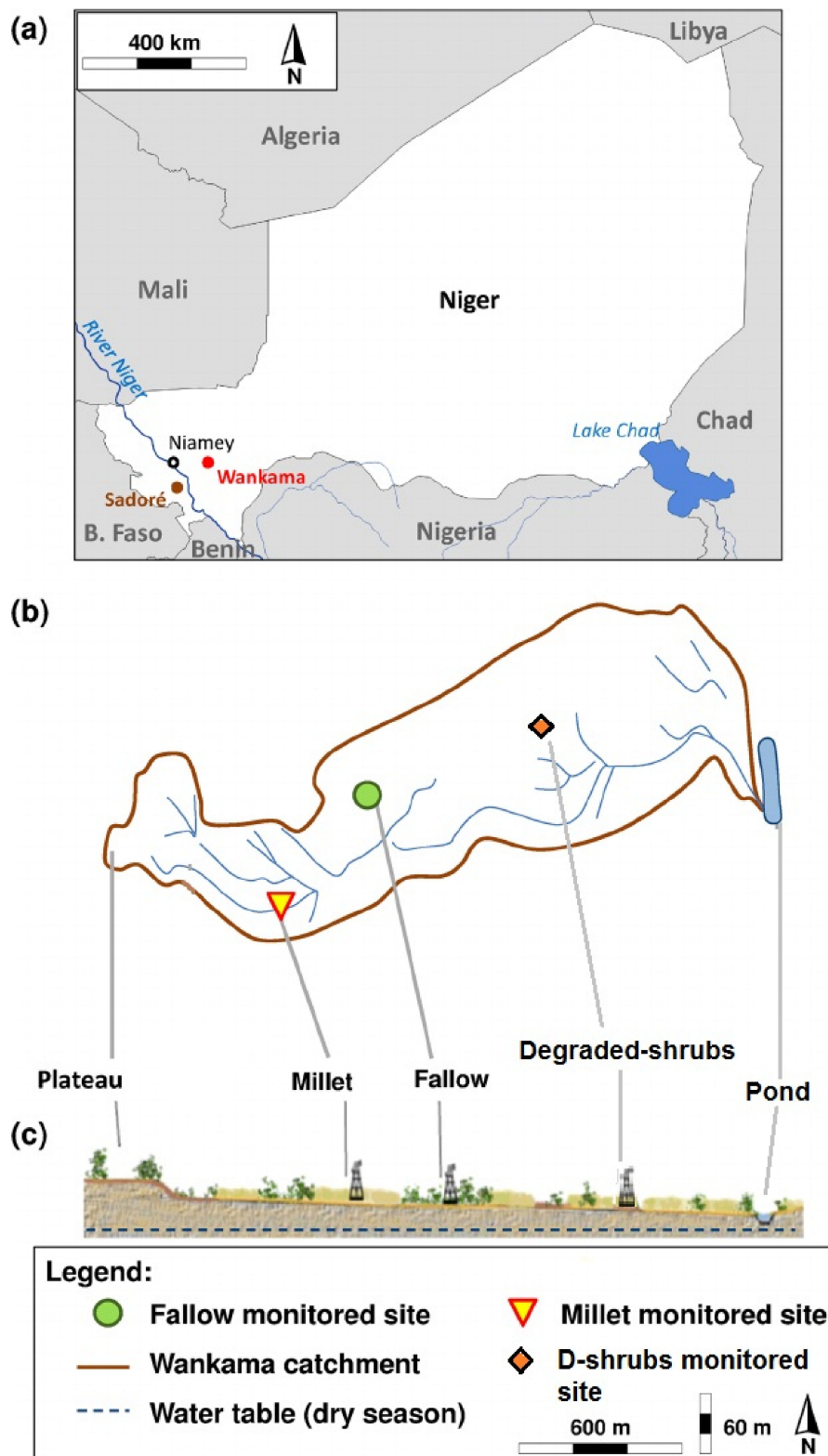
Symbol	Description	Unit	Value
$k$	The von Karman constant	(-)	0.4
$L$	The Obukhov length	m	
LAI	The leaf area index	(-)	
$LE_{soil}$	The soil latent heat flux	$W m^{-2}$	
$LE_{veg}$	The vegetation latent heat flux	$W m^{-2}$	
$g$	The gravitational acceleration	$m s^{-2}$	9.8
$R_{n,soil}$	The soil net radiation	$W m^{-2}$	
$R_{n,veg}$	The vegetation net radiation	$W m^{-2}$	
$rah$	The aerodynamic resistance	$s m^{-1}$	
$rs$	The resistance to heat flux in the boundary layer immediately above the soil surface	$s m^{-1}$	
$s$	The leaf size	m	0.01
$T_s$	The surface temperature	K	
$T_{air}$	The air temperature	K	
$U_*$	The friction velocity	$s m^{-1}$	
$U_s$	The wind speed at a height above the ground	$s m^{-1}$	
$z_m$	The roughness length for momentum	m	
$z_T$	The height of temperature measurement	m	
$z_0$	The roughness length	m	
$z_u$	The height of wind speed measurement	m	
ZLAS	The effective height of the LAS above the surface	m	9
$\gamma$	The psychrometric constant	$Pa K^{-1}$	67
$\Delta$	The slope of the saturation vapor pressure versus temperature curve	$Pa K^{-1}$	
$\theta$	The view zenith angle	(°)	
$\alpha$	Albedo	(-)	
$\rho$	Air density	$Kg m^{-3}$	1.18
$\Psi_m$	The adiabatic correction factors for momentum	(-)	
$\Psi_H$	The adiabatic correction factors for heat	(-)	
$\beta$	The Bowen ratio	(-)	
$\Psi$	The integrated stability function	(-)	
$T_*$	The temperature scale	K	
$\sigma_y$	The standard deviation of the lateral spread	(m)	
$\sigma_v$	The lateral wind fluctuations	$(m s^{-1})$	
$\alpha_{PT}$	The Priestley–Taylor coefficient	(-)	1.26

## 2.1. Experimental Site and Measurements

### 2.1.1. Site Description

The region of interest is part of the Wankama catchment, which is located 70 km east of the Niamey city, Niger (Figure 1). It is situated between an upland at an altitude of 255 m and a pond at 200 m [45]. This semi-arid site belongs to the AMMA-CATCH-Niger observatory [46], one of three

meso-sites along the West African latitudinal transect [47]. The climate is typically Sahelian with a short rainy season from June to September with an annual mean of 560 mm for the years 1905–2004, and very strong year-to-year and spatial variability. The site is characterized with high temperatures throughout the year with a daily average which ranges from 24 °C to 35 °C. Additionally, the potential evapotranspiration is about 2500 mm/year [48], greatly exceeding the annual rainfall. The soil is sandy (>90% sand) and poor in nutrients [49]. The study area is covered by: (1) Millet fields cover 58% of the catchment's surface area. This rainfed crop is cultivated traditionally with little chemical fertilizer and no pesticides, being by far the main crop grown. (2) Fallow savannah fields represent 23% of the total surface area and they are no more than five years old and typical of the Niamey region. (3) Degraded shrubs occupy the remaining area [26]. Vegetation usually emerges after the first rainfall events occurring in June or early July, peaks around the end of the rainy season in early September and then dries out during the senescence phase.



**Figure 1.** (a) Map of the Wankama basin; (b) location of the three study sites (millet, fallow and degraded shrubs); and (c) basin toposequence [26].

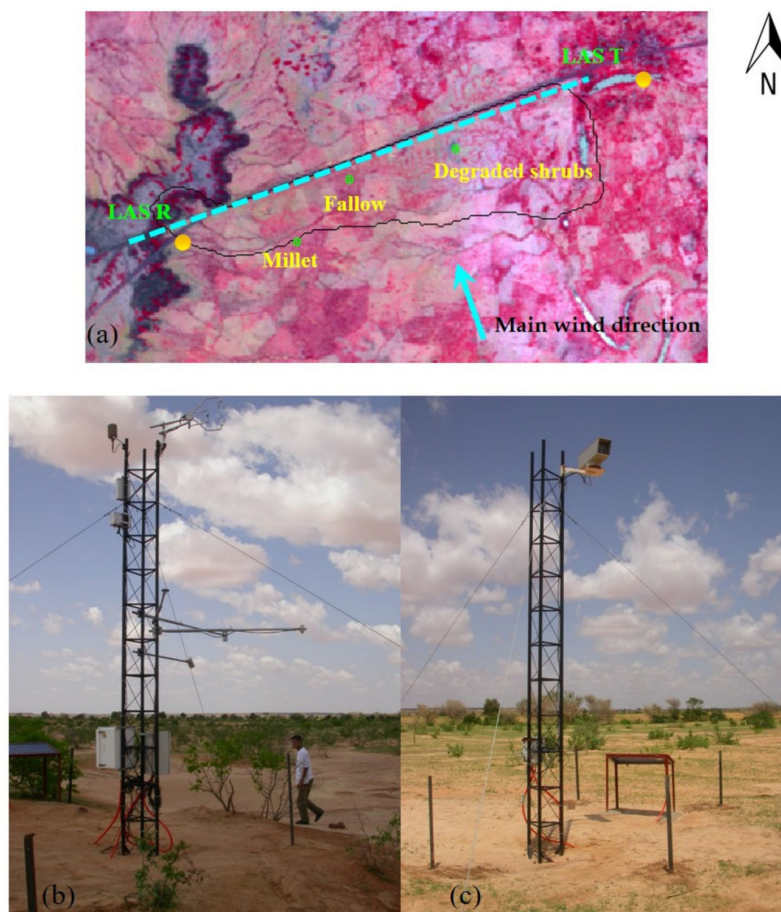
### 2.1.2. Experimental Setup

#### Patch Scale

The experiment was conducted between 23 July and 23 October 2006. The site was instrumented by: three eddy covariance (EC) stations, measuring surface fluxes of sensible heat, latent heat (i.e., evapotranspiration), momentum and CO<sub>2</sub>; CNR1 radiometer sensors to measure the four components of solar radiation, and soil heat plate fluxes; and Time Domain Reflectometry (TDR) probes, for the soil moisture profiles of the three main land cover types (millet crop, fallow savannah and degraded shrubs) (Figure 2). Over the millet and fallow sites, belonging to the AMMA-CATCH observatory [46], the EC system consisted of a 3D sonic anemometer (CSAT3, Campbell Scientific Ltd., Loughborough, UK) which measured the fluctuations of the wind velocity components and temperature, and an open-path infra-red gas analyzer (LICOR-7500, Campbell Scientific Ltd.) that measured concentration of water vapor and carbon dioxide. Raw data were sampled at a rate of 20 Hz and processed with the EdiRe software (Version 1.4.3.1167, R. Clement, University of Edinburgh), based on CarboEurope recommendations [50], including despiking, double rotation, cross-correlation for derivation of time lag between the sonic anemometer and the gas analyzer, spectral corrections, Webb corrections and atmospheric stability test, with no gap filling [26]. For the degraded shrubs site, EC system consisted of a CSAT3 and a Krypton hygrometer (KH20, Campbell Scientific Ltd.) and the fluxes were calculated using the Ecpack software after performing planar fit corrections [51], correcting the sonic temperature for the presence of humidity [52], frequency response corrections for slow apparatus and path length integration [53], the inclusion of the mean vertical velocity according to Webb et al. [54] and oxygen correction for the Krypton hygrometer which is sensitive to O<sub>2</sub> [55]. Ezzahar et al. [27] compared the Ecpack and EdiRe outputs and they concluded that the difference between the two software packages is not significant (RMSE (root mean square error) = 6.7 W m<sup>-2</sup> and R<sup>2</sup> = 0.99).

These automatic measurements have been complemented by manual vegetation characteristics estimates about every 15 days including LAI (using hemispherical photographs) and height for millet and fallow sites [24]. Timings of the season was quite similar with a beginning occurring quite late about end of July. Leaf Area Index values were generally low for both sites with peaks of 0.9 m<sup>2</sup> m<sup>-2</sup> at the end of August and of 0.24 m<sup>2</sup> m<sup>-2</sup> at mid-September for fallow and millet sites, respectively.





**Figure 2.** (a) An overview of the Wankama basin and the experimental setup, locations of LAS (T and R stand for transmitter and receiver, respectively) and three EC systems are shown (millet, fallow and degraded shrubs sites). Photos (EC system (b) and scintillometer (c)) were taken by J. Ezzahar as part of the ACN project.

## Grid Scale

A Large Aperture Scintillometer (LAS) was set up over a 3.2 km transect spanning the three ecosystem types, i.e., millet and fallow fields and the degraded shrubs. The LAS used in this study was developed and built by the Meteorology and Air Quality Group from the Wageningen University (Netherlands). This instrument was constructed according to the basic design described in Ochs and Wilson [56]. It has an aperture size of 0.15 m and the transmitter operates at a wavelength of 0.94  $\mu\text{m}$ . At the receiver,  $C_n^2$  is sampled at 1 Hz and averaged over 1 min intervals by a CR510 datalogger [57]. The transmitter and the receiver were installed on 10 m towers with an altitude difference of approximately 46 m. The receiver was installed at the highest part of the basin (upland) whilst the transmitter was installed at the lowest part of the basin (Figure 2). The direction of the LAS path was  $250^\circ$  from the north. At the receiver tower, a 2D anemometer (Wp200, R.M. Young Company, Traverse City, MI, USA) to measure wind speed and direction at 10 m was also installed. Additionally, the air temperature and humidity were measured using Vaisala HMP45C probe.

## 2.2. Scintillometer Measurements

### 2.2.1. Scintillometry Theory

The transmitter emits electromagnetic radiation, which is scattered by the turbulent atmosphere, and the resulting variations in signal intensity (scintillations) are recorded by a receiver comprising

an identical mirror and a photodiode detector. The intensity fluctuations are related to the path averaged structure parameter of the refractive index of air  $C_n^2$ . The scintillations are primarily the result of fluctuations in air temperature and humidity. Strictly speaking, the measured  $C_n^2$  is related to the structure parameters of temperature  $C_T^2$ , humidity  $C_q^2$ , and the covariant term  $C_{Tq}$ . For electromagnetic waves in the visible and near-infrared region, however, humidity related scintillations are much smaller than temperature related scintillations. Wesely [58], and more recently Moene [59], demonstrated that for a LAS operating at a near-infrared wavelength, the  $C_T^2$  is related to  $C_n^2$  as follows:

$$C_T^2 = C_n^2 \left( \frac{T_a^2}{-0.78 \times 10^{-6} p} \right)^2 \left( 1 + \frac{0.03}{\beta} \right)^{-2} \quad (1)$$

where  $T_a$  is the air temperature,  $p$  is atmospheric pressure and  $\beta$  is the Bowen ratio. The factor involving the Bowen ratio is the correction term for the influence of humidity fluctuations.  $C_n^2$  and  $C_T^2$  are in ( $m^{-2/3}$ ) and ( $K^2 m^{-2/3}$ ) respectively.

Using the Monin–Obukhov Similarity Theory (MOST), the sensible heat flux ( $H_{LAS}$ ) can be obtained from  $C_T^2$  and an additional wind speed data through the following dimensionless relationship:

$$\frac{C_T^2(z_{LAS} - d)^{2/3}}{T_*^2} = f_T \left( \frac{z_{LAS} - d}{L} \right) = c_{T1} \left( 1 - c_{T2} \frac{z_{LAS} - d}{L} \right)^{-2/3} \quad (2)$$

where  $L$  is the Obukhov length (m) ( $L = \frac{\rho c_p T_a U_*^3}{kg H_{LAS}}$ ),  $T_*$  is the temperature scale ( $T_* = \frac{-H_{LAS}}{\rho c_p U_*}$ ) and  $U_*$  is friction velocity expressed as:

$$U_* = ku \left[ \text{Ln} \left( \frac{z_{LAS} - d}{z_0} \right) - \Psi \left( \frac{z_{LAS} - d}{L} \right) \right]^{-1} \quad (3)$$

where  $z_{LAS}$  is the effective height of the LAS above the surface [60],  $\Psi$  is the integrated stability function [61],  $d$  is the displacement height,  $z_0$  is the roughness length,  $k$  is the von Karman constant,  $g$  is the gravitational acceleration,  $\rho$  is the density of air and  $c_p$  is the specific heat of air at constant pressure. During the iteration procedure, the Bowen ratio is evaluated using the  $H_{LAS}$ , net radiation ( $R_n$ ), and soil heat flux ( $G$ )  $\left[ \beta = \left( \frac{H_{LAS}}{R_n - G - H_{LAS}} \right) \right]$ .

Several forms of the function  $f_T$  have been proposed (e.g., [62–65]). In this study, we adopted  $f_T = 4.9 \left( 1 - 9 \frac{z_{LAS} - d}{L} \right)$ ,  $\left( \frac{z_{LAS} - d}{L} < 0 \right)$ , after De Bruin et al. [64].

Finally, the latent heat flux ( $LE_{LAS}$ ) from the LAS can be derived by imposing the energy-balance closure [27,30,66–71].

### 2.2.2. Footprint Model

The footprint model describes the measured flux as the integral of the contributions from the entire source area. This source can be determined using simple analytical models [72] or more complex Lagrangian models [73]. In this study, the Horst and Weil model, which has been adapted to scintillometer measurements, was used to evaluate the source surface. It has been used successfully in previous studies [27,35].

The footprint function  $f$  relates the flux measured at  $z_m$ ,  $F(x, y, z_m)$  to the spatial distribution of surface fluxes,  $F(x, y, z_0) = F_0(x, y)$ , that is:

$$F(x, y, z_m) = \int_{-\infty}^{\infty} \int_{-\infty}^x F_0(x', y') f(x - x', y - y', z_m) dx' dy' \quad (4)$$

where  $x$  and  $y$ , respectively, are the upwind and crosswind distances (m) from the point where the measurements are taken. The source surface is calculated by integration of the footprint function. The footprint function  $f$  is calculated using the Horst and Weil model [72]:

$$\bar{f}^y(x, z_m) \cong \frac{d\bar{z}}{dx} \frac{z_m}{z^2} \frac{\bar{u}(z_m)}{\bar{u}(c\bar{z})} A \exp\left[\left(\frac{z_m}{b\bar{z}}\right)^r\right] \quad (5)$$

where  $z$  is the mean plume height for diffusion from a surface source (m),  $z_m$  is the measurement height, and  $u(z)$  is the mean wind speed profile. Variables  $A$ ,  $b$ , and  $c$  are functions of the gamma function of shape parameter  $r$ .

Horst and Weil [72] found the following relationship for the diffusion in the lateral direction (which is commonly assumed to be Gaussian):

$$D_y(x, y) = \frac{1}{\sigma_y \sqrt{2\pi}} \exp\left[-\frac{1}{2} \left(\frac{y}{\sigma_y}\right)^2\right] \quad (6)$$

Here,  $\sigma_y$  is the standard deviation of the lateral spread, which is related to the plume travel time  $x/U$  (where  $U$  is the plume advection speed) and the standard deviation of the lateral wind fluctuations  $\sigma_v$ :

$$\sigma_y = \sigma_v \frac{x}{U} \quad (7)$$

The three-dimensional footprint function for scalar fluxes is obtained:

$$F_p(x, y, z_m) = \bar{f}^y(x, z_m) D_y(x, y) \quad (8)$$

To assess the accuracy of the LAS, a footprint analysis was made. The wind direction pattern showed that only the interval ranging from  $70^\circ$  to  $250^\circ$  is considered during the study period. This is because the footprint of the LAS covers the monitored sites where the EC systems are installed. The EC measured fluxes are thus more or less comparable with the LAS fluxes. Contrary to the interval  $250^\circ$  to  $70^\circ$  spanning more degraded shrubs fields, therefore, the LAS measures differed strongly to EC measures.

### 2.3. Remote Sensing Data

In the objective of developing a method to characterize convective fluxes at the landscape scale from remote sensing observations only, the main inputs of the TSEB model (see below) were derived from MODIS and MSG SEVIRI products.

#### 2.3.1. MODIS Products

The MODIS instrument operates on both Terra and Aqua spacecraft. It has a viewing swath width of 2330 km and views the entire surface of the Earth every 1–2 days. Its detectors measure 36 spectral bands between 0.405 and 14.385  $\mu\text{m}$ , and it acquires data at three spatial resolutions: 250 m, 500 m, and 1000 m. The collection version 5 of the products was used in the present study. The MOD15A2 LAI is a 1 km global data product updated once every 8 days derived from the MODIS sensor on board TERRA. The MODIS LAI algorithms were developed jointly by personnel at Boston University, the University of Montana SCF and NASA GSFC. The algorithm consists of a main procedure based on the inversion of a 3D radiative transfer model thanks to a look-up-table. This algorithm exploits the spectral information content of MODIS surface reflectances at up to seven spectral bands. Should this main algorithm fail, a back-up algorithm is triggered to estimate LAI empirical relationships with vegetation indices. The LAI products in the collection version 5 are available from 2001 to present.

The MCD43B3  $\alpha$  product is upscaled from MCD43A3 and provides both the white-sky-albedo ( $\alpha$ ) and the black-sky- $\alpha$  at 1-km resolution every 16 days. Both Terra and Aqua data are used in the generation of this product. We were interested in a single integrated value over the entire

solar emission spectrum (0.3–5.0  $\mu\text{m}$ ) called shortwave broadband  $\alpha$ . The black-sky  $\alpha$  (directional hemispherical reflectance) is a directional  $\alpha$  corresponding to 100% of direct light; it depends on the solar zenithal angle unlike the white sky  $\alpha$  (bihemispherical reflectance) which corresponds to a completely diffuse light. The “blue sky”  $\alpha$  used in this study is a weighted average between these two extreme values. The weighting depends essentially on the aerosol content of the atmosphere [74]. In our case, we considered that we have 85% direct light and 15% diffuse, and the final  $\alpha$  value is calculated as follows [74]:

$$\alpha = 0.85 \times \alpha_{\text{black-sky}} + 0.15 \times \alpha_{\text{white-sky}} \quad (9)$$

The MOD11A1 and MYD11A1 at 1 km spatial resolution under clear-sky conditions are the daily land surface temperature (Ts) products, derived from Terra and Aqua, respectively. Ts were derived from the brightness temperature using bands 31 and 32 through a generalized split-window algorithm. The daily level 3 MODIS Ts (collection 5) were used in this study. Table 2 summarizes the data layer characteristics of MODIS products.

All MODIS products were downloaded from the website (<https://search.earthdata.nasa.gov/search>).

**Table 2.** List of MODIS products selected as input for the TSEB model.

MODIS Product	Scientific Data Sets (SDSs)	Spatial Resolution	Number of Clear Images during the Study Period
MCD43B3	$\alpha_{\text{BSA\_Band\_shortwave}}$ (Black Sky $\alpha$ )	1 km	8
	$\alpha_{\text{WSA\_Band\_shortwave}}$ (White Sky $\alpha$ )	1 km	8
MOD15A2	Lai_1km	1 km	8
MYd11A1	Daytime land surface temperature	1 km	11
	Daytime LST view zenith angle	1 km	11
MOD11A1	Daytime land surface temperature	1 km	9
	Daytime LST view zenith angle	1 km	9

### 2.3.2. SEVIRI Land Surface Temperature

The Spinning Enhanced Visible and InfraRed Imager (SEVIRI) aboard Meteosat Second Generation (MSG) is a multi-spectral sensor, imaging across the visible and near-IR, which provides data with a high temporal and spectral resolution every 15 min in 12 wavebands, and image spatial sampling scales of 3 km for nadir view. The land surface temperature is estimated from top of atmosphere (TOA) brightness temperatures of SEVIRI split-window channels, centered on 10.8 and 12.0  $\mu\text{m}$ , using a generalized split-window (GSW) algorithm [75] with the adoption of SEVIRI data [76]. IR radiance is absorbed and scattered even by thin clouds and aerosols. Therefore, the retrieval of Ts works only for completely cloud-free pixels, and the quality of this product is automatically assessed by means of the accuracy of the parameters used in the Ts algorithm. Ts products used in this study are distributed by EUMETSAT through the Satellite Application Facility on Land Surface Analysis (LSA SAF).

### 2.4. TSEB Model Description and Implementation

The TSEB model was presented and described by Norman et al. [7]. It solves two separate energy balances for the soil and vegetation and estimates evaporation and transpiration as residual terms of the energy balance. The TSEB model adopts the Priestley–Taylor (P-T) parameterization and an iteration procedure estimate the energy partitioning.

In TSEB, the directional radiometric temperature ( $T_{\text{rad}}(\theta)$ ) is divided into its soil and vegetation fractions as seen by the radiometer, and is expressed as follows:

$$T_{\text{rad}}(\theta) = \left[ f(\theta)T_{\text{veg}}^4 + (1 - f(\theta))T_{\text{soil}}^4 \right]^{1/4} \quad (10)$$

where  $T_{\text{veg}}$  and  $T_{\text{soil}}$  are the vegetation and soil components of temperature (K). The fraction of the field of view of the infrared radiometer occupied by canopy,  $f(\theta)$ , can be calculated by combining the view zenith angle  $\theta$  and the vegetation cover fraction  $f_c$  considering vegetation with a spherical distribution of leaf angles [77]:

$$f(\theta) = 1 - \exp\left(\frac{-0.5 \times \text{LAI}}{\cos(\theta)}\right) \quad (11)$$

$f_c$  is simply  $f(\theta = 0)$ , or

$$f_c = 1 - \exp(-0.5 \times \text{LAI}) \quad (12)$$

The LAI estimates were then used to derive the canopy height by the empirical equation:

$$h_c = \left( \frac{\text{LAI} - \text{LAI}_{\text{min}}}{\text{LAI}_{\text{max}} - \text{LAI}_{\text{min}}} \right) \times 0.4 \quad (13)$$

In this study, the soil emissivity and leaf emissivity were taken as constant values from the literature (0.95 and 0.97, respectively).

The double source energy balance corresponds to the simple source balance shared between the soil and vegetation components:

$$R_{n,\text{soil}} = H_{\text{soil}} + LE_{\text{soil}} + G \quad (14)$$

$$R_{n,\text{veg}} = H_{\text{veg}} + LE_{\text{veg}} \quad (15)$$

with  $R_{n,\text{soil}}$  being the soil net radiation,  $H_{\text{soil}}$  the soil sensible heat flux,  $LE_{\text{soil}}$  the soil latent heat flux,  $R_{n,\text{veg}}$  the vegetation net radiation,  $H_{\text{veg}}$  the vegetation sensible heat flux and  $LE_{\text{veg}}$  the vegetation latent heat flux.

The surface sensible heat flux ( $H$ ) is partitioned between the vegetated canopy and soil using the following relations:

$$H_{\text{veg}} = \rho c_p \frac{T_{\text{veg}} - T_a}{r_{\text{ah}}} \quad (16)$$

$$H_{\text{soil}} = \rho c_p \frac{T_{\text{soil}} - T_a}{r_{\text{ah}} + r_s} \quad (17)$$

where  $\rho$  ( $\text{kg m}^{-3}$ ) is the density of air;  $c_p$  ( $\text{J kg}^{-1} \text{K}^{-1}$ ) is the specific heat capacity of air;  $T_a$  is the air temperature;  $T_{\text{veg}}$  and  $T_{\text{soil}}$  are, respectively, the canopy and soil temperatures;  $r_{\text{ah}}$  is the aerodynamic resistance to heat transfer across the canopy–surface layer interface; and  $r_s$  is the resistance to heat flux in the boundary layer immediately above the soil surface.

The  $r_{\text{ah}}$  is calculated from the adiabatically corrected log temperature profile equation [78] expressed as:

$$r_{\text{ah}} = \frac{\left( \frac{\ln(z_u - d)}{z_m} - \Psi_m \right) \left( \frac{\ln(z_T - d)}{z_m} - \Psi_H \right)}{V_{\text{kar}}^2 \times U_a} \quad (18)$$

where  $z_u$  and  $z_T$  are the height of wind speed and temperature measurement  $U_a$  and air temperature measurement  $T_a$ , respectively;  $d$  is the displacement of reference plan ( $d = 2/3 \times h_c$ ;  $h_c$ , is canopy

height);  $z_m$  is the roughness length for momentum ( $z_m = h_c/8$ );  $V_{kar}$  is the von Karman constant taken to be 0.4; and  $\Psi_m$  and  $\Psi_H$  are the adiabatic correction factors for momentum and heat, respectively [78].

Although  $r_s$  is rather complex, as it depends on many factors, Sauer et al. [79] provided a reasonable approximation:

$$r_s = \frac{1}{a + b \times U_s} \quad (19)$$

where  $a = 0.004 \text{ m s}^{-1}$ ,  $b = 0.012$ , and  $U_s$  is the wind speed at a height above the ground where the effect of soil roughness is minimal (typically between 0.05 and 0.2 m). Using the empirical relations from Campbell and Norman [80]:

$$U_s = U_h \exp \left[ a_{sc} \left( \frac{z}{h_c} - 1 \right) \right] \quad (20)$$

with  $a_{sc}$  being the leaf size expressed as:

$$a_{sc} = 0.28 \times LAI^{2/3} h_c^{1/3} s^{-1/3} \quad (21)$$

and  $U_h$  the wind speed at the top of vegetation canopy given by:

$$U_h = \left[ \frac{\ln \left( \frac{h_c - d}{z_m} \right)}{\ln \left( \frac{z_u - d}{z_m} \right) - \Psi_m} \right] \quad (22)$$

The surface soil heat flux is estimated as a fraction of  $R_{n,soil}$ :

$$G = c_g R_{n,soil} \quad (23)$$

where  $c_g \sim 0.35$  [81].

The latent heat flux from the vegetated canopy is derived from the PT formula:

$$LE_{veg} = \alpha_{PT} f_g \frac{R_{n,veg}}{+\gamma} \quad (24)$$

where  $\gamma$  is the psychrometric constant ( $\approx 67 \text{ Pa K}^{-1}$ ),  $f_g$  is the fraction of leaf area index (LAI) that is green,  $\Delta$  is the slope of the saturation vapor pressure versus temperature curve, and  $\alpha_{PT} \sim 1.26$  for TSEB model [82].

To solve the system that includes more unknowns than equations, an iterative process is used that closes on the Obukhov length ( $L$ ). The algorithm starts by calculating the wind and turbulence variables ( $L$ ,  $U_*$ ,  $U_s$ , and  $r_{ah}$ , expressed by the above equations).

The available energy and heat fluxes are then determined by calculating the net radiation ( $R_n$ ) and its partition between the vegetation ( $R_{n,veg}$ ) and the soil ( $R_{n,soil}$ ), as well as the conduction flux in the soil ( $G$ ). The plant transpiration ( $LE_{veg}$ ) is estimated by the PT equation, which allows the residual calculation of the vegetation sensitive heat flux ( $H_{veg}$ ) as well as the vegetation temperature ( $T_{veg}$ ). The soil temperature ( $T_{soil}$ ) is estimated by radiometric temperature and canopy fraction, and is then used to estimate the soil heat flux ( $H_{soil}$ ). An energy balance on the soil is used to calculate soil evaporation ( $LE_{soil}$ ).

The estimated components of latent heat flux ( $LE_{veg}$  and  $LE_{soil}$ ) are assumed to be positive, meaning that there is no condensation. If  $LE_{soil}$  is negative, then its value is set to zero and a new value of  $LE_{veg}$  is calculated as a residual term of the vegetation energy balance. If  $LE_{veg}$  is negative, then transpiration is reduced iteratively by decreasing the value of the PT coefficient until the  $LE_{veg}$  value becomes positive or zero.

The heat fluxes then allow the recalculation of  $L$ . The iterative process is repeated until numerical stability of  $L$  is reached.

## 2.5. Aggregation Scheme

Spatial aggregation is a method to bridge the model parameters controlling surface exchange at a patch scale with the areal average value of equivalent model parameters applicable at a larger scale to estimate grid scale surface fluxes using the same equations that govern the patch scale behavior [66]. In general, aggregation can be applied either to the input forcing of the evapotranspiration models, or to the fluxes derived from fine resolution input fields [33]. Here, the first assumption is used to link between local and effective values of land surface parameters [27,66,83,84]. The chosen averaging approach is directly related to the considered variable. For albedo ( $\alpha$ ) and displacement height  $d$ , a simple arithmetic average is used:

$$\langle \alpha \rangle = \sum_i f_i \alpha_i \quad (25)$$

$$\langle d \rangle = \sum_i f_i d_i \quad (26)$$

From the Stefan–Boltzmann law, the aggregated value of the surface temperature  $T_s$  can be obtained from:

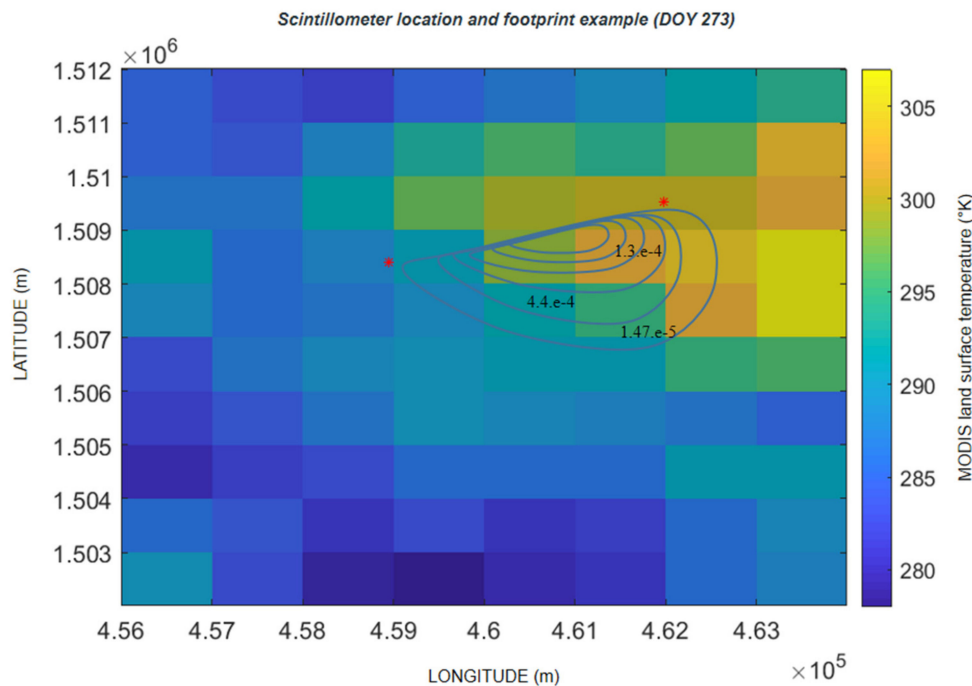
$$\langle T_s \rangle = \left[ \frac{\sum_i f_i \varepsilon_i (T_{s,i})^4}{\langle \varepsilon \rangle} \right]^{0.25} \quad (27)$$

where  $f_i$  is the fraction of the surface covered by the patch  $i$  (with  $\sum_i f_i = 1$ ). Finally, the aggregation of the roughness length is obtained from a logarithmic average as follows:

$$\ln \langle z_0 \rangle = \sum_i f_i \ln(z_{0i}) \quad (28)$$

Because of the absence of a soil occupation map for the study site, the aggregation scheme using in-situ measurements was done by weighted average of the estimated variables from the data of the 3 EC stations. Following Ezzahar et al. [27], the local values obtained by each EC system are assumed to be representative for the sites where those systems are installed along the basin. Sites millet, fallow, and degraded shrubs represented about 54%, 26%, and 20% of the Wankama catchment, respectively.

Three different aggregation methods were implemented to calculate the inputs of TSEB model from the MODIS products. They differ in the way the pixel scale inputs are used to derive the grid scale ones. The first scheme consists in averaging the MODIS products at their nominative resolution scale on geographic windows of  $10 \times 8$  pixels around the scintillometer transect (i.e., independently of the scintillometer footprint; cf. Figure 3). The second scheme averages the MODIS products over the scintillometer transect without considering the representivity of the corresponding pixels with regards to the footprint (i.e., each pixel belonging to the footprint have the same contribution to the aggregated value). Finally, a weighted average aggregation scheme was implemented. It consists in weighting the MODIS pixel according to their proportion occupied in the footprint. The aggregated values of MODIS products are then used as inputs of the TSEB model at Terra-MODIS and Aqua-MODIS overpass time.



**Figure 3.** Footprint of the LAS, calculated using the footprint model of Horst and Weil, superposed with a  $T_s$ /MODIS image on DOY 273.

### 3. Results and Discussion

As a preliminary step, the quality of experimental data including EC and scintillometer surface fluxes and satellite products were assessed. In a second step, the TSEB predictions were evaluated at the station scale. Finally, the TSEB predictions of the convective fluxes were evaluated at the scale of the scintillometer footprint: (1) by aggregating the station scale predictions using the in-situ observations of albedo,  $T_s$  and LAI, which constitutes the ideal case; (2) by using 3 km  $T_s$  observations from the MSG SEVIRI instrument directly at the scale of the scintillometer measurements; and (3) by testing three aggregation schemes of MODIS products to assess if a better representation of heterogeneity based on the 1-km products improves our large-scale estimates.

#### 3.1. Experimental Data Analysis

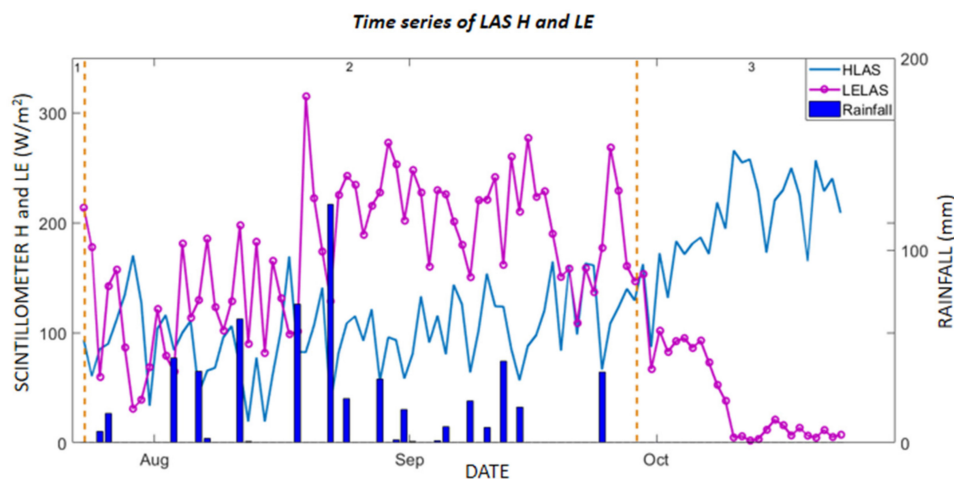
##### 3.1.1. In-Situ Surface Fluxes

The quality of EC measurements is usually assessed by assuming that the energy balance is closed. The comparison of the  $(R_n - G)$  and the sum of the latent and sensible heat fluxes ( $LE_{EC} + H_{EC}$ ), measured independently by the EC systems (data not shown here), showed an underestimation of the turbulent fluxes by about 8%, 17%, and 20% for the millet, fallow and degraded shrubs, respectively. Several practical reasons preclude perfect closure [85], e.g., spatial scale discrepancies between measurements of energy balance components, and spatial heterogeneities; storage between measurement levels (canopy and superficial soil); so-called eddy flux losses (not measured here); and difficulties with ground flux estimation [86,87]. Results reported in other experimental studies have shown that balance shortfalls commonly stand between 10% and 40% of the available energy [85], [88]. As a conclusion, closure is quite satisfactory for our experiment, especially at the millet site which was more homogenous than fallow and degraded shrubs sites.

Figure 4 plots the time series of the average between 9:00 a.m. and 5:00 p.m. of  $H_{LAS}$ , and  $LE_{LAS}$  during the entire study period. Note that the scintillometer only calculates  $H$ , and  $LE$  is derived as a residual term of the energy balance ( $LE_{LAS} = R_n - G - H_{LAS}$ ). In this case, the available energy has



been aggregated using the values measured at each instrumented field ( $\langle R_n - G \rangle_{\text{agg}} = \sum_1^3 f_i (R_n - G)_i$ ). Stages 1, 2 and 3 present, respectively, the beginning of season (1 June–mid-July), the growing stage which took place over two months (mid-July–mid-September) and the senescence stage (from mid-September). Preliminary to the scintillometer data analysis, a comparison between  $H_{\text{LAS}}$  against weighted EC fluxes was done for the wind direction interval  $70^\circ$  to  $250^\circ$ , because the footprint of the LAS covers the monitored sites where the EC systems were installed. The statistical results show a good agreement between the LAS sensible heat fluxes and those derived from the EC systems with a relative error of about 20% [27]. The  $H_{\text{LAS}}$  and  $LE_{\text{LAS}}$  dynamics are almost stable throughout the season and  $LE_{\text{LAS}}$  largely dominates  $H_{\text{LAS}}$  through the growing stage. Rainfall is rather regular between mid-July and mid-September which ensured enough soil moisture to keep millet growing until mid-September. It can be seen that every rainfall event caused an immediate response with a significant energy shift between H and LE.  $LE_{\text{LAS}}$  is around  $200 \text{ W/m}^2$  and increases after each rain event, and peaks at the end of August with  $315 \text{ W/m}^2$ , which corresponds to the LAI peak for Millet crop [24]. In the same period, soil moisture was high and reached its maximum. Some points with very low  $LE_{\text{LAS}}$  values were recorded during the growing stage which can be explained by the very dry conditions or by a considerable amount of bare soil. A sharp increase of  $LE_{\text{LAS}}$  was shown after the 40-mm rain event of 20 September. However,  $LE_{\text{LAS}}$  decreases systematically from the end of September to the end of October, while  $H_{\text{LAS}}$  reaches its maximum ( $265 \text{ W/m}^2$ ).

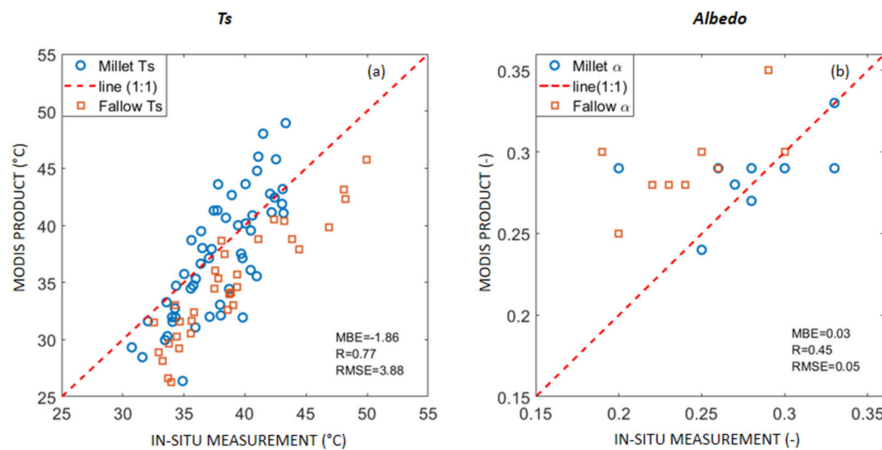


**Figure 4.** Time series of LAS latent and sensible heat fluxes (daily average between 9:00 a.m. and 5:00 p.m.).

### 3.1.2. Remote Sensing Products

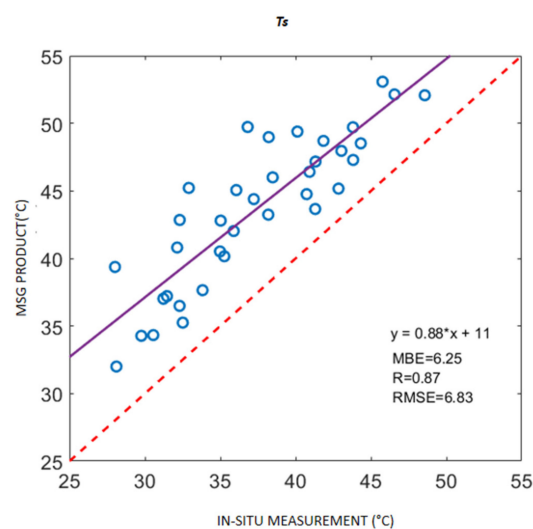
First, an evaluation of the agreement between MODIS albedo and  $T_s$  products and in-situ measurements was required because of their great influence on the predicted fluxes. This comparison was carried out only for clear sky days when MODIS images are available. Figure 5 displays the scatter plots of MODIS derived  $T_s$  and albedo against in-situ measurements, for millet and fallow sites, as only one month of measurements were available for the degraded shrub site. The agreement between MODIS and measured albedo is relatively poor ( $\text{RMSE} = 0.05$ ,  $R = 0.45$ ). This may be attributed to the lack of representivity of the sites covered by relatively dense vegetation with regards to the north from the LAS path mainly composed of bare soil. This lack of representivity is particularly prominent in the Sahel as soils are very clear, especially at the beginning (July) of the season. The dry spell produced a short period of albedo increase. During the rain events, albedo follows a very markedly decreasing general trend, with large fluctuations due to alternating dry and wet spells [26]. This assumption is supported by the observed positive bias of 0.03. The  $T_s$  comparison shows a reasonable correlation of  $R = 0.77$  with an  $\text{RMSE} = 3.8 \text{ }^\circ\text{C}$ , and an underestimation of  $T_s$  MODIS by  $-1.8 \text{ }^\circ\text{C}$  on average.

The RMSE is on the upper limit of the values reported in the literature that usually range between 2 and 4 K [89]. The observed scattering may also stem from the fact that the in-situ Ts is not representative for the satellite Ts. A finer look at the results highlights also a very contrasted bias between the two sites: over Millet that dominates the Wankama land use with 58% of the area, the bias is logically low (MBE =  $-0.5$  K) while it reaches more than  $-4$  °C over the denser and thus colder vegetation of the fallow site.



**Figure 5.** Scatterplot of: MODIS Ts (a); and  $\alpha$  (b) versus in-situ data (only millet and fallow sites are considered).

Finally, Figure 6 shows an intercomparison of MSG SEVIRI and MODIS Ts averaged over a  $3 \times 3$  pixel windows to match the MSG resolution at time of Terra and Aqua MODIS overpasses. The overestimation of MSG SEVIRI Ts with regards to MODIS Ts is prominent along the whole Ts range. This could be linked to the view zenith angle differences between MSG SEVIRI and MODIS satellites. The impact of changes in viewing angle is enhanced with surface heterogeneities. In addition, Ts was retrieved using one MSG SEVIRI window channel ( $10.8 \mu\text{m}$ ), while the MODIS algorithm is based on two windows channels ( $11.03 \mu\text{m}$  and  $12.02 \mu\text{m}$ ). These dissimilarities related to the spectral characteristics of the two instruments can induce the observed differences in retrieved Ts. Finally, the positioning error of MSG has been found to reach up to 8 pixels, i.e.,  $\sim 30$  km [90], which could also explain this overestimation, in particular if the pixel is shifted to the north of the area characterized by bare and hot soils.



**Figure 6.** Scatterplot of MODIS versus MSG SEVIRI Ts.

### 3.2. Multi-Scale Convective and Evaporative Fluxes Predictions

As a preliminary step, the TSEB predictions are evaluated at the station scale both using in-situ and MODIS derived products. Focus is then put on the evaluation of TSEB at the grid scale using in-situ, MODIS and MSG products.

#### 3.2.1. Station Scale

##### Using In Situ Data

The available energy and turbulent fluxes predicted by the TSEB model are compared to those measured over the three eddy covariance stations at half-hourly time step. Table 3 summarizes the statistical results including the number of observations ( $n$ ), the correlation coefficient ( $R$ ), the root mean square error (RMSE), and the mean bias error (MBE). The TSEB model estimates correctly the available energy ( $R_n-G$ ) with RMSE of 52, 49, and 57  $W/m^2$  for millet, fallow and degraded shrubs, respectively. A first remarkable feature is the slight underestimation ( $-23 W/m^2$ ) for the millet site. The second remarkable feature is a stronger dispersion for the degraded shrubs area. This dispersion is mainly related to the estimation of the soil heat flux, with RMSE = 38  $W/m^2$  and Mean Bias Error MBE = 23  $W/m^2$  for the millet site and RMSE = 60  $W/m^2$  and MBE = 54  $W/m^2$  for degraded shrubs site. Indeed, affected by the complexity of the physical processes that occur in the soil as well as the vegetation cover, soil heat flux is the most difficult parameter to estimate with great precision. Several studies have pointed out this difficulty in estimating  $G$  especially on sparse vegetation [27,30,68]. In addition, measuring this parameter at 5 cm and in sparse vegetation represents a major challenge to get representative measurement. The installation of heat flux plates in the soil must consider several criteria: the plates must be totally covered to ensure that it is not directly exposed to the sunlight, especially when the soil is very sandy as in the Wankama catchment where sand represents 80–90% [91]. Additionally, heavy rainfall within a few hours, which is relatively common in the Sahel region, can uncover the plates and thus lead to exposing them to sunlight. Moreover, the use of the Brutsaert formula (developed for clear sky days by Brutsaert [92]) for the incoming longwave radiation (that replaced the measurements when they were not available for this station, to estimate  $R_n$ ) can create a significant dispersion for low radiation values in cloudy conditions [68].

The agreement between the measured and predicted turbulent fluxes is obviously lower than for the estimated available energy but, despite a significant dispersion, correlation coefficients and RMSEs are encouraging (Table 3). The observed dispersion can be related to the footprint effect, as the footprint of the EC system is considerably larger than the representivity scale of the measured input variables (mainly  $\alpha$ ,  $T_s$  and LAI). In addition, other parameters such as roughness length ( $z_{0m}$ ) and displacement height ( $d$ ) were estimated as a fraction of the vegetation height using classical rules of thumb [93,94]. These equations have been established for homogeneous and dense covers while the study sites are heterogeneous and sparse. A further step to minimize dispersions would be to estimate these variables using EC data following Hoedjes et al. [95] and Lagouarde et al. [96]. Finally, several empirical and constant model parameters have been used in the TSEB model, which require calibration according to the specific conditions of the study area. Among them, the Priestley–Taylor parameter ( $\alpha_{PT}$ ) directly relates latent heat flux to the available energy at the surface. Most studies driven by TSEB model have used its theoretical value of 1.26 [7,42,97,98]. Other studies have identified that it is variable under different surface and atmospheric conditions (varies in the range 0.5–2). In particular, the  $\alpha_{PT}$  was found to be smaller for dry surfaces and higher for humid conditions [99]. In the same context, Ait Hssaine et al. [44] demonstrated, using a new TSEB-based evapotranspiration model (called TSEB-SM), that  $\alpha_{PT}$  cannot be considered as a constant because it varies in time according to several factors including LAI, green vegetation cover fraction and soil water availability. In particular, it can take extreme values under dry, water deficit and advective conditions. Interestingly, the partition between latent and sensible heat fluxes is correctly reproduced for the degraded shrub site (mean biases lower than 0.92  $W/m^2$  and 11  $W/m^2$  for respectively, H and LE). Indeed, the results of sensible heat flux over

the millet crop matches perfectly with the results found by Lhomme et al. [83] (RMSE = 43 W/m<sup>2</sup>) who used a two layer model to estimate H from Ts. Lhomme et al. [83] used an empirical relationship between Ts and Ta ( $\delta T = a(Ts - Ta)^m$ ), m and a being statistically determined by adjusting the modeled to the H observed by the Bowen ratio method.

**Table 3.** Statistical metrics of the comparison between measured and estimated values of available energy and turbulent fluxes (H and LE) at patch and grid scale.

		Fluxes	n	R	MBE	RMSE
			(-)	(-)	(W/m <sup>2</sup> )	(W/m <sup>2</sup> )
Patch-scale (using MODIS data)	Millet	H	1442	0.81	26	43
		LE	1442	0.69	-17	66
		R <sub>n</sub> -G	1442	0.92	-23	52
	Fallow	H	1905	0.89	-21	40
		LE	1905	0.88	0.38	65
		R <sub>n</sub> -G	1905	0.98	-37	49
	Degraded-shrubs	H	486	0.82	0.92	24
		LE	486	0.71	11	65
		R <sub>n</sub> -G	486	0.95	-42	57
Grid-scale (using in-situ data)	Millet	H	52	0.45	13	31
		LE	52	0.58	58	94
		R <sub>n</sub> -G	52	0.67	4	50
	Fallow	H	52	0.73	25	54
		LE	52	0.71	32	93
		R <sub>n</sub> -G	52	0.79	23	69
	Degraded-shrubs	H	-	-	-	-
		LE	-	-	-	-
		R <sub>n</sub> -G	-	-	-	-
Grid-scale (using in-situ data)	H	370	0.87	-21	37	
	LE	186	0.72	39	75	
Grid-scale using MSG SEVIRI data	H	51	0.39	-19	65	
	LE	51	0.2	32	75	
Grid-scale (using MODIS data)	Scheme 1	H	20	0.71	-48	73
		LE	20	0.85	73	102
	Scheme 2	H	20	0.7	-30	65
		LE	20	0.82	49	91
	Scheme 3	H	20	0.71	-23	63
		LE	20	0.82	45	88

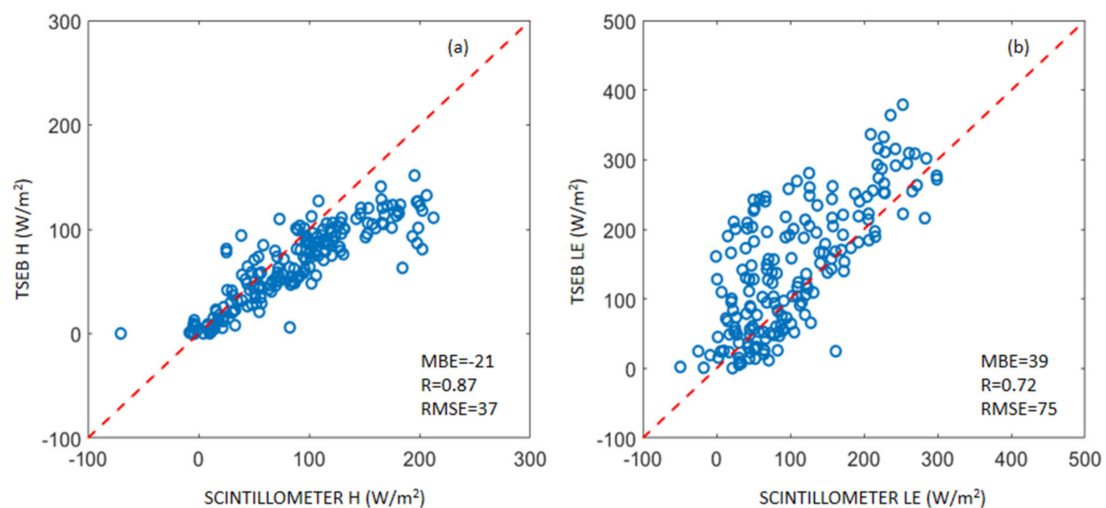
### Using MODIS Data

An intercomparison between (R<sub>n</sub>-G) and turbulent fluxes measured by each station and the fluxes estimated by TSEB model using MODIS data was done and the error statistics are reported in Table 3. Overall, the discrepancies between the available energy estimated from TSEB model and measured one, for both sites (millet and fallow) are likely due to greater scatter between MODIS and measured  $\alpha$ , and to the difference between MODIS and in-situ Ts. In all cases, LE does largely dominate H through the growing season (July–September), in particular for the fallow field. For the millet site, the late start of the rainy season had significant adverse effects and the crop was not able to take advantage of the abundant rainfall because of insufficient plant development [45]. For both sites, an overestimation of simulated LE compared to measured ones is recorded at the end of the season. Indeed, the saturation of TSEB in the higher range of LE is due to the fixed maximum value for  $\alpha_{PT}$  (equal to 1.26) [44]. The structure of the model cannot accommodate large evaporative demand conditions and strong advective conditions [100]. Moreover, the change in wind direction in monsoon periods strengthens advection effects. As a conclusion, TSEB prediction, although slightly biased at the end of the season, reproduces quite well the observations: RMSE/MBE are relatively low for both millet and fallow sites.

### 3.2.2. Three-Kilometer Grid Scale

#### Using In-Situ Data

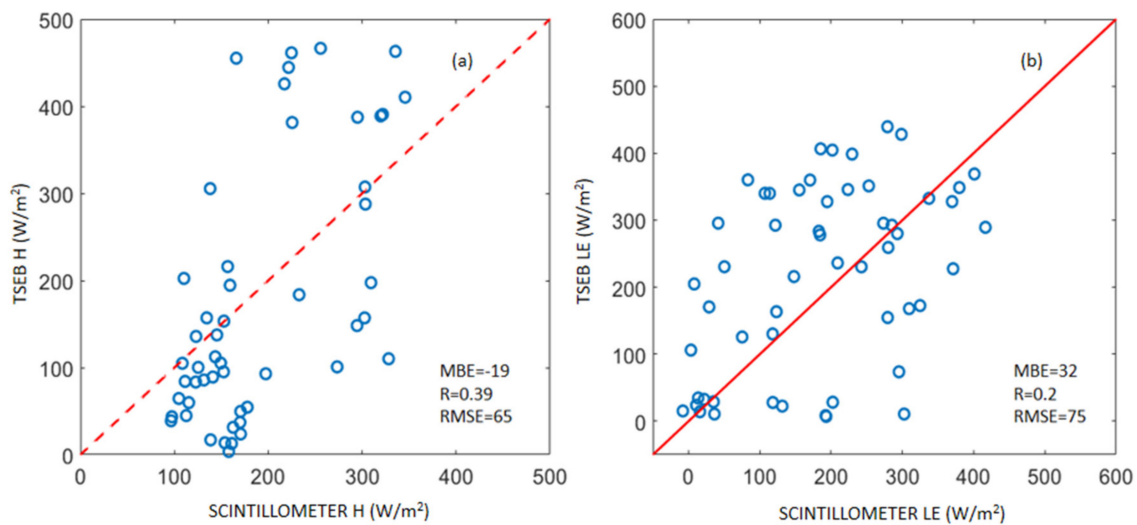
Figure 7 displays the comparison between three sites-averaged turbulent fluxes values derived from TSEB model using weighted input data ( $T_s$ ,  $\alpha$ ,  $d$ ,  $z_0$ , LAI, and  $h_c$ ) compared against the turbulent fluxes measured by the scintillometer. The corresponding statistics are shown in Table 3. TSEB provides satisfying results for the sensible heat flux with a relative error of about 24% ( $R = 0.87$ ,  $RMSE = 37 \text{ W/m}^2$ ,  $MBE = -21 \text{ W/m}^2$ ). Indeed, the scintillometer path is very heterogeneous. This can generate a difference in flux even between two adjacent plots. Therefore, the dispersion observed can be related to the differences in the footprint of LAS, as well as to the uncertainties of the similarity stability functions. The surface temperature is a key parameter for turbulent fluxes and for monitoring the energy balance. Weighted  $T_s$  over heterogeneous surface using locally measured values can lead to errors in the partition of temperature between soil and vegetation, and consequently to estimate sensible heat flux. A visual assessment of scatter plots in Figure 7b and the statistics (Table 3) clearly indicates that TSEB overestimates LE fluxes with  $MBE = 39 \text{ W/m}^2$ , especially at the end of the season. LE measured by the LAS never exceeds  $300 \text{ W/m}^2$  while simulations reach  $400 \text{ W/m}^2$ , which could be related to the fixed value of  $\alpha_{PT}$  to 1.26. Note also that any error in the available energy induces the  $LE_{LAS}$  errors.



**Figure 7.** Sensible (a); and latent (b) heat fluxes scatterplots between LAS measurements and TSEB prediction fed by aggregated in-situ data (at 30 min time).

#### Using 3-km MSG SEVIRI $T_s$

Here, MSG SEVIRI  $T_s$  is used to simulate H and LE by TSEB directly at the scale of the scintillometer path (3 km) spanning the three vegetation types (only the interval  $70^\circ$  to  $250^\circ$  is considered). Those data were used in conjunction with an average of a  $3 \times 3$  pixel MODIS area for  $\alpha$  and LAI. TSEB estimates were compared to  $H_{LAS}$  and  $LE_{LAS}$ . According to precipitated amounts during the growing season, the LE is noticeably higher at the fallow site compared to millet site (patch scale). Note that the MSG SEVIRI pixel covers diverse land cover (millet, fallow, degraded shrubs and bare soil), which explains the discrepancies obtained between MSG SEVIRI-based and measured LE (Figure 8b). By contrast, the overestimation of H at the end of the season is mainly linked to the higher surface temperatures measured by MSG SEVIRI. It is reminded that the scintillometer fetch does not exceed 100 m, while the MSG SEVIRI resolution at the study site is about 3 km.



**Figure 8.** Sensible (a) and latent (b) heat fluxes scatterplots of the comparison between the LAS grid scale measurements and TSEB predictions based on MSG SEVIRI products (at MSG-SEVIRI overpass time).

### Using MODIS Products

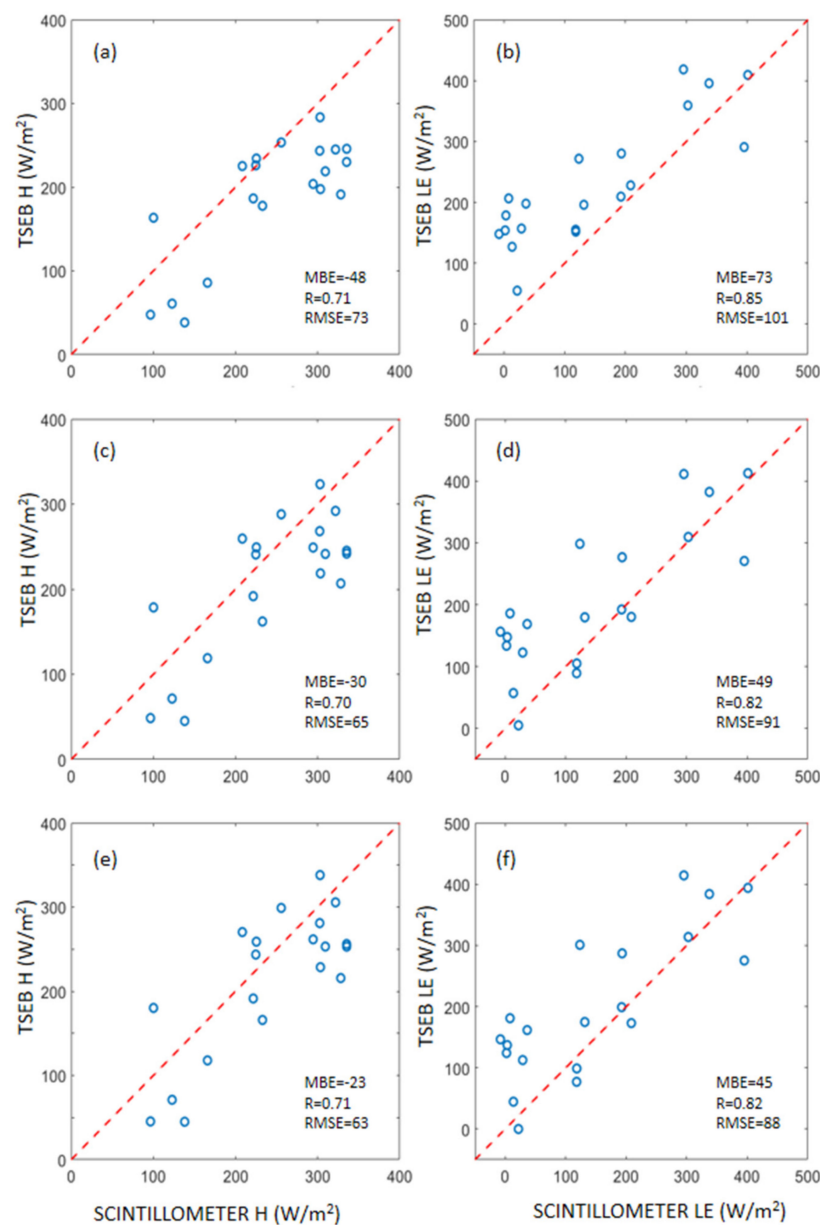
In this section, the effect of land cover heterogeneity on the estimated turbulent fluxes has been studied by combining TSEB model driven by Terra and Aqua remotely sensed data and an aggregation scheme, at Terra-MODIS and Aqua-MODIS overpass time. Figure 9 displays results for three different aggregation schemes (the simple averaging at the MODIS resolution scale (Scheme 1 (Figure 9a,b)), the simple averaging over the footprint extent (Scheme 2 (Figure 9c,d)), and a weighted average of the footprint extent (Scheme 3 (Figure 9e,f), see Section 2.5). Statistical metrics are reported in Table 3

The simple averaging method using MODIS resolution data in Figure 9a underestimates H with a relative error of about 21% ( $RMSE = 73 \text{ W/m}^2$ ,  $R = 0.71$ ,  $MBE = -48 \text{ W/m}^2$ ). The correspondence between simulated and measured fluxes for Scheme 2 is good compared to Scheme 1 (Figure 9c). The relative error was about 13%, the RMSE value was  $65 \text{ W/m}^2$ , and the linear regression forced through the origin yielded an R of 0.70 and the mean bias error was reduced to  $-30 \text{ W/m}^2$  instead of  $-48 \text{ W/m}^2$  for the first scheme. H simulated by using Scheme 3 in Figure 9e is closer to the 1:1 line, providing a quite significant improvement with regards to the second scheme. The RMSE and the mean bias error between the simulated and measured values were 63 and  $-23 \text{ W/m}^2$ , respectively. The relative error of 10% indicates that Scheme 3 is very reliable in providing area-averaged sensible heat flux over heterogeneous surfaces.

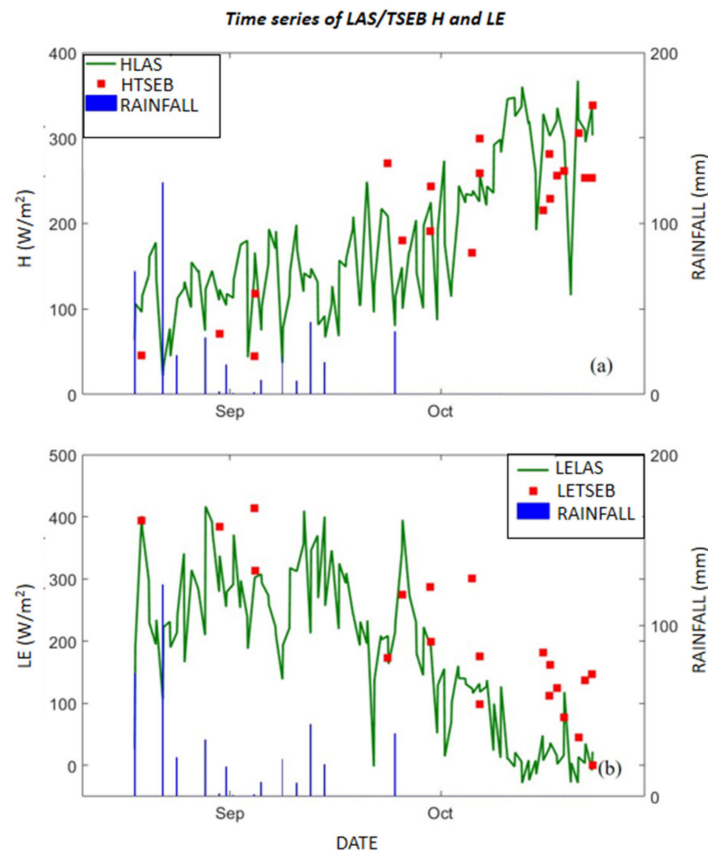
In a subsequent step, simulated LE was compared to the observed one using the three schemes described before. As shown in Figure 9b, the Scheme 1 overestimates LE with a relative error of about 58% ( $RMSE = 102 \text{ W/m}^2$ ,  $R = 0.85$ ,  $MBE = 73 \text{ W/m}^2$ ). That can be explained by the fact that LE is a residual term affected by errors in both available energy and sensible heat flux. Figure 9d,f plots simulated versus observed LE for Schemes 2 and 3. TSEB provides satisfying results with a RMSE of  $65 \text{ W/m}^2$  and  $63 \text{ W/m}^2$ , and relative error of 39% and 35% for the second and third schemes, respectively. Based on the above results, Scheme 1 could not achieve satisfactorily the upscaling of turbulent fluxes over heterogeneous land surfaces. In fact, the method considers that all pixels belonging to the footprint of LAS contributes 100% of the pixel value, even for pixels of low contribution. This will obviously lead to large differences in  $T_s$ , which is a key feature for determining the turbulent fluxes.

To go further into the comparison, the Figure 10 shows the time series of the convective fluxes observed by the LAS ( $H_{LAS}$  and  $LE_{LAS}$ ) at the time of the satellite overpass and simulated by TSEB based on MODIS products for the footprint weighted method ( $H_{sim}$  and  $LE_{sim}$ ). According to the

availability of MODIS images, and considering the wind direction interval  $70^\circ$  to  $250^\circ$ , only LAS data from mid-August to the end of the experiment on 22 October were available. Despite a significant scattering, both observed and simulated fluxes depict a similar behavior with a gradual switching of available energy from latent to sensible heat following the last rainfall around mid-September. An interesting feature is the underestimation of H by TSEB during the senescence while LE is overestimated for the same period. This could be attributed to the constant value of  $\alpha_{PT}$  equal to 1.26 used in this study. Indeed, this value is usually accepted for semi-arid to sub-humid agricultural areas under irrigation regime [7,43,101] while it has been shown that lower  $\alpha_{PT}$  are obtained for dry areas such as in our region of study after the end of the rainy season. Finally, the obtained significant scattering, in particular after the last rainfall could also be related to the radiative properties of vegetation that are not well represented for dry vegetation.



**Figure 9.** Sensible and latent heat fluxes scatterplots of the comparison between the LAS grid scale measurements and TSEB predictions based on MODIS products for: simple averaging (a,b); area weighted method (c,d); and footprint weighted method (e,f) (at MODIS overpass time).



**Figure 10.** Time series of the comparison between the LAS grid scale measurements ( $H_{LAS}$  and  $LE_{LAS}$ ) and TSEB predictions based on MODIS products ( $H_{sim}$  and  $LE_{sim}$ ) for footprint weighted method (at MODIS overpass time).

#### 4. Summary and Concluding Remarks

The main objective of this work was to estimate the turbulent fluxes over a path covering the three dominant crops (millet, fallow and degraded shrubs) in the Wankama basin by combining TSEB model, an aggregation method and satellite data (MODIS and MSG SEVIRI). The data used to validate this approach were collected within the framework of the AMMA project. Each site was equipped with meteorological stations and Eddy Covariance systems for monitoring the energy and water balance as well as the soil and vegetation characteristics. In addition, a large aperture scintillometer was installed over a transect of about 3.2 km spanning the three dominant vegetation types (with contrasted energy balances and different fluxes behaviors) to derive the integrated H and LE values over this heterogeneous landscape. Our approach was organized into three steps. The experimental data including in-situ surface fluxes and remote sensing products were evaluated. The TSEB model was then evaluated at the station scale for the three study sites (millet, fallow and degraded shrubs) instrumented with EC systems. Finally, the TSEB prediction of surface fluxes were evaluated at the grid-scale based on in-situ data (at the 30 min time), MODIS (at Terra and Aqua overpass time), and MSG products (at MDG-SEVIRI overpass time) and aggregation schemes.

The results obtained at the station scale for H and LE are relevant, especially when using in-situ data given the complexity of the study sites and in the range of what has been reported in the literature in terms of RMSE and correlation coefficient. Some scatter was noted, which is mainly related to the difference in footprints of the measuring instruments (about 100 m for EC systems compared to less than 10 m for inputs variables such as LAI, albedo and  $T_s$ ), as well as to the fixed maximum value for  $\alpha_{PT}$  (equal to 1.26) during the entire season. Despite this dispersion and as already underlined by



several authors, TSEB provides with good performances for H and LE prediction at the station scale by using in-situ measured inputs or, to a lesser extent, MODIS derived inputs.

TSEB was then evaluated at the (1 km and 3 km) grid-scale along the scintillometer transect spanning a heterogeneous landscape. To this end, in-situ data were first aggregated to estimate the mean turbulent fluxes. In this ideal case, where the major inputs are well known thanks to in-situ measurements on the dominant vegetation type, the predicted fluxes obviously showed a good agreement with the scintillometer observations (RMSE = 37 and 75 W/m<sup>2</sup> for H and LE, respectively) although some dispersions were observed, which were explained by the difference in the footprints of the measuring instruments as well as because LE<sub>LAS</sub> was calculated as a residual term of the energy balance using the average available energy values derived from measurements at each site. In a second step, TSEB was validated at the grid-scale but with remotely-sensed inputs. To this objective, MSG SEVIRI and MODIS sensors only offer a revisit time able to sample the high inter- and intra-daily variability of the SEB in semi-arid areas. The first assessment was performed using the MSG SEVIRI Ts at 3 km without explicit representation of the sub-pixel heterogeneity. The agreement between H and LE simulated by TSEB model and scintillometer observations is very poor, in particular in terms of temporal dynamic (R = 0.39 and 0.2 for H and LE, respectively). This dispersion could be attributed to the large bias on MSG SEVIRI Ts linked to the heterogeneity of land cover. In addition, this highlights the need to represent the sub-pixel heterogeneity. This was tested in a final step using 1-km MODIS products as input of the TSEB model and three aggregation schemes. While the results with the simplest aggregation scheme consisting in averaging MODIS inputs independently of the footprint provides poor results (RMSE of 73 W/m<sup>2</sup> and 102W/m<sup>2</sup> for H and LE, respectively), the statistical metrics based on the two other aggregation schemes are encouraging. In particular, Scheme 2, considering the MODIS pixel included in the scintillometer footprint only, and without weighting the values based on the footprint contribution as in Scheme 3, represents a good trade-off between accuracy and ease of implementation to map evapotranspiration over complex landscape.

This work offers perspectives for the spatial mapping of evapotranspiration over poorly gauged areas such as semi-arid areas of the Sahel.

**Author Contributions:** B.A.H., J.E. and L.J. designed the study. G.C. and B.C. designed the experimental protocol. B.C. and J.E. performed the measurements. B.A.H., J.E. and L.J. analyzed the data. J.E. contributed to remote sensing data processing. A.B., S.E.-R., S.K. and O.M. contributed to materials/analysis tools. B.A.H., J.E. and L.J. wrote the paper.

**Acknowledgments:** This study was conducted within the International Joint Laboratory-TREMA <http://trema.ucam.ac.ma>). This research benefited from support of the IRD, PHC Toubkal/18/61, H2020 REC/645642 and SAGESSE (PPR/2015/48) projects and AMMA program. AMMA was developed by an international group and is funded by many agencies, especially from France, the UK, the US, and Africa. It has been the beneficiary of a major financial contribution from the European Community's Sixth Framework Research Program. Detailed information on scientific coordination and funding is available on the AMMA International website <http://www.ammainternational.org>. Ait Hssaine Bouchra was supported by a fellowship from ARTS program from IRD, France.

**Conflicts of Interest:** The authors declare no conflict of interest

## References

1. Goutorbe, J.P.; Lebel, T.; Tinga, A.; Bessemoulin, P.; Brouwer, J.; Dolman, A.J.; Engman, E.T.; Gash, J.H.C.; Hoepffner, M.; Kabat, P.; et al. HAPEX-Sahel: A large scale study of land-atmosphere interactions in the semi-arid tropics. *Ann. Geophys.* **1994**, *12*, 53–64. [[CrossRef](#)]
2. Lebel, T.; Parker, D.J.; Flamant, C.; Holler, H.; Polcher, J.; Redelsperger, J.L.; Thorncroft, C.; Bock, O.; Bourles, B.; Galle, S.; et al. The AMMA field campaigns: Accomplishments and lessons learned. *Atmos. Sci. Lett.* **2011**, *12*, 123–128. [[CrossRef](#)]
3. Beljaars, A.C.; Viterbo, P.; Miller, M.J.; Betts, A.K. The anomalous rainfall over the United States during July 1993: Sensitivity to land surface parameterization and soil moisture anomalies. *Mon. Weather Rev.* **1993**, *124*, 362–383. [[CrossRef](#)]

4. Koster, R.D.; Dirmeyer, P.A.; Guo, Z.; Bonan, G.; Chan, E.; Cox, P.; Gordon, C.T.; Kanae, S.; Kowalczyk, E.; Lawrence, D.; et al. Regions of strong coupling between soil moisture and precipitation. *Science* **2004**, *305*, 1138–1140. [[CrossRef](#)] [[PubMed](#)]
5. Shukla, J.; Mintz, Y. Influence of Land-Surface Evapotranspiration on the Earth's Climate. *Science* **1982**, *215*, 1498–1501. [[CrossRef](#)] [[PubMed](#)]
6. Allen, R.G.; Pereira, L.S.; Raes, D.; Smith, M. *FAO Irrigation and Drainage No 56: Guidelines for Computing Crop Water Requirements*; FAO: Rome, Italy, 1998.
7. Norman, J.M.; Kustas, W.P.; Humes, K.S. A two-source approach for estimating soil and vegetation energy fluxes from observations of directional radiometric surface temperature. *Agric. For. Meteorol.* **1995**, *77*, 263–293. [[CrossRef](#)]
8. Allen, R.G.; Tasumi, M.; Morse, A.; Trezza, R.; Wright, J.L.; Bastiaanssen, W.; Kramber, W.; Lorite, I.; Robison, C.W. Satellite-based energy balance for mapping evapotranspiration with internalized calibration (METRIC)-applications. *J. Irrig. Drain. Eng.* **2007**, *133*, 395–406. [[CrossRef](#)]
9. Su, Z. The surface energy balance system (SEBS) for estimation of turbulent heat fluxes. *Hydrol. Earth Syst. Sci.* **2002**, *6*, 85–99. [[CrossRef](#)]
10. Coudert, B.; Ottlé, C.; Boudevillain, B.; Guillevic, P.C.; Demarty, J. Contribution of thermal infrared remote sensing data in multiobjective calibration of a dual source SVAT model. *J. Hydrometeorol.* **2006**, *7*, 404–420. [[CrossRef](#)]
11. Noilhan, J.; Mahfouf, J.F. The ISBA Land surface parametrisation scheme. *Glob. Planet. Chang.* **1996**, *13*, 145–159. [[CrossRef](#)]
12. Braud, I.; Dantas-Antonino, A.C.; Vauclin, M.; Thony, J.-L.; Ruelle, P. A Simple Soil-Plant-Atmosphere Transfer model (SiSPAT): Development and field verification. *J. Hydrol.* **1995**, *166*, 213–250. [[CrossRef](#)]
13. Gentine, P.; Entekhabi, D.; Chehbouni, A.; Boulet, G.; Duchemin, B. Analysis of evaporative fraction diurnal behaviour. *Agric. For. Meteorol.* **2007**, *143*, 13–29. [[CrossRef](#)]
14. Kalma, J.; McVicar, T.; McCabe, M. Estimating land surface evaporation: A review of methods using remotely sensed surface temperature data. *Surv. Geophys.* **2008**, *29*, 421–469. [[CrossRef](#)]
15. Li, X.; Li, X.W.; Li, Z.Y.; Ma, M.G.; Wang, J.; Xiao, Q.; Liu, Q.; Che, T.; Chen, E.X.; Yan, G.J.; et al. Watershed allied telemetry experimental research. *J. Geophys. Res. Atmos.* **2009**, *114*, D22103. [[CrossRef](#)]
16. Sandholt, P.E.; Dyrland, M.; Farrugia, C.J. Dayside aurorae and polar arcs under south east IMF orientation. *Ann. Geophys.* **2006**, *24*, 3421–3432. [[CrossRef](#)]
17. Fensholt, R.; Nielsen, T.T.; Stisen, S. Evaluation of AVHRR PAL and GIMMS 10-day composite NDVI time series products using SPOT-4 vegetation data for the African continent. *Int. J. Remote Sens.* **2006**, *27*, 2719–2733. [[CrossRef](#)]
18. Stisen, S.; Jensen, K.H.; Sandholt, I.; Grimes, D.I.F. A remote sensing driven distributed hydrological model of the Senegal River basin. *J. Hydrol.* **2008**, *354*, 131–148. [[CrossRef](#)]
19. De Bruin, H.A.R.; Trigo, I.F.; Jitan, M.A.; Temesgen Enku, N.; Van Der Tol, C.; Gieske, A.S.M. Reference crop evapotranspiration derived from geo-stationary satellite imagery: A case study for the Fogera flood plain, NW-Ethiopia and the Jordan Valley, Jordan. *Hydrol. Earth Syst. Sci.* **2010**, *14*, 2219–2228. [[CrossRef](#)]
20. Ghilain, N.; Arboleda, A.; Gellens-Meulenberghs, F. Evapotranspiration modelling at large scale using near-real time MSG SEVIRI derived data. *Hydrol. Earth Syst. Sci. Discuss.* **2010**, *7*, 7079–7120. [[CrossRef](#)]
21. Sun, Z.; Gebremichael, M.; Ardö, J.; De Bruin, H.A.R. Mapping daily evapotranspiration and dryness index in the East African highlands using MODIS and SEVIRI data. *Hydrol. Earth Syst. Sci.* **2011**, *15*, 163–170. [[CrossRef](#)]
22. Fensholt, R.; Sandholt, I.; Proud, S.R.; Stisen, S.; Rasmussen, M.O. Assessment of MODIS sun-sensor geometry variations effect on observed NDVI using MSG SEVIRI geostationary data. *Int. J. Remote Sens.* **2010**, *31*, 6163–6187. [[CrossRef](#)]
23. Rulinda, C.M.; Bijker, W.; Stein, A. Image mining for drought monitoring in eastern Africa using Meteosat SEVIRI data. *Int. J. Appl. Earth Obs. Geoinf.* **2010**, *12*, 63–68. [[CrossRef](#)]
24. Boulain, N.; Cappelaere, B.; Ramier, D.; Issoufou, H.B.A.; Halilou, O.; Seghier, J.; Guillemain, F.; Oi, M.; Gignoux, J.; Timouk, F. Towards an understanding of coupled physical and biological processes in the cultivated Sahel-2. Vegetation and carbon dynamics. *J. Hydrol.* **2009**, *375*, 190–203. [[CrossRef](#)]

25. Boulain, N.; Cappelaere, B.; Seguis, L.; Favreau, G.; Gignoux, J. Water balance and vegetation change in the Sahel: A case study at the watershed scale with an eco-hydrological model. *J. Arid Environ.* **2009**, *73*, 1125–1135. [[CrossRef](#)]
26. Ramier, D.; Boulain, N.; Cappelaere, B.; Timouk, F.; Rabanit, M.; Lloyd, C.R.; Boukraoui, S.; Métayer, F.; Descroix, L.; Wawrzyniak, V. Towards an understanding of coupled physical and biological processes in the cultivated Sahel–1. Energy and water. *J. Hydrol.* **2009**, *375*, 204–216. [[CrossRef](#)]
27. Ezzahar, J.; Chehbouni, A.; Hoedjes, J.; Ramier, D.; Boulain, N.; Boukraoui, S.; Cappelaere, B.; Descroix, L.; Mougenot, B.; Timouk, F. Combining scintillometer measurements and an aggregation scheme to estimate area-averaged latent heat flux during the AMMA experiment. *J. Hydrol.* **2009**, *375*, 217–226. [[CrossRef](#)]
28. Velluet, C.; Demarty, J.; Cappelaere, B.; Braud, I.; Issoufou, H.B.A.; Boulain, N.; Ramier, D. Building a field- and model-based climatology of local water and energy cycles in the cultivated Sahel—Annual budgets and seasonality. *Hydrol. Earth Syst. Sci.* **2014**, *18*, 5001–5024. [[CrossRef](#)]
29. Allies, A.; Demarty, J.; Olioso, A.; Bouzou Moussa, I.; Issoufou, H.B.-A.; Velluet, C.; Bahir, M.; Mainassara, I.; Oi, M.; Chazarin, J.P.; et al. Adapting EVASPA/S-SEBI to evapotranspiration mapping in the Sahel with uncertainty characterization: The E3S method. *Remote Sens. Environ.* **2018**, in press.
30. Ezzahar, J.; Chehbouni, A.; Er-Raki, S.; Hanich, L. Combining a large aperture scintillometer and estimates of available energy to derive evapotranspiration over several agricultural fields in a semi-arid region. *Plant Biosyst.* **2009**, *143*, 209–221. [[CrossRef](#)]
31. Timmermans, W.J.; Su, Z.; Olioso, A. Footprint issues in scintillometry over heterogeneous landscapes. *Hydrol. Earth Syst. Sci.* **2009**, *13*, 2179–2190. [[CrossRef](#)]
32. Long, D.; Singh, V.P.; Li, L.Z. How sensitive is SEBAL to changes in input variables, domain size and satellite sensor? *J. Geophys. Res.* **2011**, *116*, D21107. [[CrossRef](#)]
33. Ershadi, A.; McCabe, M.F.; Evans, J.P.; Walker, J.P. Effects of spatial aggregation on the multi-scale estimation of evapotranspiration. *Remote Sens. Environ.* **2013**, *131*, 51–62. [[CrossRef](#)]
34. Liu, S.; Xu, Z.; Song, L.; Zhao, Q.; Ge, Y.; Xu, T.; Ma, Y.; Zhu, Z.; Jia, Z.; Zhang, F. Upscaling evapotranspiration measurements from multi-site to the satellite pixel scale over heterogeneous land surfaces. *Agric. For. Meteorol.* **2016**, *230–231*, 97–113. [[CrossRef](#)]
35. Saadi, S.; Boulet, G.; Bahir, M.; Brut, A.; Mougenot, B.; Fanise, P.; Simonneaux, V.; Chabaane, Z.L. Assessment of actual evapotranspiration over a semi-arid heterogeneous land surface by means of coupled low resolution remote sensing data with energy balance model: Comparison to extra Large Aperture Scintillometer measurements. *Hydrol. Earth Syst. Sci.* **2017**. [[CrossRef](#)]
36. Baldocchi, D.D.; Falge, E.; Gu, L.; Olson, R.; Hollinger, D.; Running, S.; Anthoni, P.; Bernhofer, C.; Davis, K.; Evans, R.; et al. FLUXNET: A new tool to study the temporal and spatial variability of ecosystem-scale carbon dioxide, water vapor, and energy flux densities. *Bull. Am. Meteorol. Soc.* **2001**, *82*, 2415–2434. [[CrossRef](#)]
37. Baldocchi, D. Measuring fluxes of trace gases and energy between ecosystems and atmosphere the state and future of the eddy covariance method. *Glob. Chang. Biol.* **2014**, *20*, 3600–3609. [[CrossRef](#)] [[PubMed](#)]
38. Baldocchi, D.; Ryu, Y.; Keenan, T. Terrestrial Carbon Cycle Variability [version 1; referees: 2 approved]. *F1000Research* **2016**, *5*, 2371. [[CrossRef](#)] [[PubMed](#)]
39. Baldocchi, D.; Chu, H.; Reichstein, M. Inter-annual variability of net and gross ecosystem carbon fluxes: A review. *Agric. For. Meteorol.* **2017**, *249*, 520–533. [[CrossRef](#)]
40. Brunsell, N.A.; Ham, J.M.; Arnold, K.A. Validating remotely sensed land surface fluxes in heterogeneous terrain with large aperture scintillometry. *Int. J. Remote Sens.* **2011**, *32*, 6295–6314. [[CrossRef](#)]
41. Liu, S.; Xu, Z.M.; Zhu, Z.L.; Jia, Z.Z.; Zhu, M.J. Measurements of evapotranspiration from eddy-covariance systems and large aperture scintillometers in the Hai River Basin, China. *J. Hydrol.* **2013**, *487*, 24–38. [[CrossRef](#)]
42. Kustas, W.P.; Norman, J.M. Evaluation of soil and vegetation heat flux predictions using a simple two-source model with radiometric temperatures for partial canopy cover. *Agric. For. Meteorol.* **1991**, *94*, 13–29. [[CrossRef](#)]
43. Diarra, A.; Jarlan, L.; Er-Raki, S.; Le Page, M.; Aouade, G.; Tavernier, A.; Boulet, G.; Ezzahar, J.; Merlin, O.; Khabba, S. Performance of the Two-Source Energy Budget (TSEB) Model for the Monitoring of Evapotranspiration Over Irrigated Annual Crops in North Africa. *Agric. Water Manag.* **2017**, *193*, 71–88. [[CrossRef](#)]

44. Ait Hssaine, B.; Merlin, O.; Rafi, Z.; Ezzahar, J.; Jarlan, L.; Khabba, S.; Er-Raki, S. Calibrating an evapotranspiration model using radiometric surface temperature, vegetation cover fraction and near-surface soil moisture data. *Agric. For. Meteorol.* **2018**, *256*, 104–115. [CrossRef]
45. Boulain, N.; Cappelaere, B.; Seguis, L.; Gignoux, J.; Peugeot, C. Hydrologic and land use impacts on vegetation growth and NPP at the watershed scale in a semi-arid environment. *Reg. Environ. Chang.* **2006**, *6*, 147–156. [CrossRef]
46. Cappelaere, B.; Descroix, L.; Lebel, T.; Boulain, N.; Ramier, D.; Laurent, J.-P.; Favreau, G.; Boubkraoui, S.; Boucher, M.; Moussa, I.B.; et al. The AMMA-CATCH experiment in the cultivated Sahelian area of South-West Niger. Investigating water cycle response to a fluctuating climate and changing environment. *J. Hydrol.* **2009**, *375*, 34–51. [CrossRef]
47. Lebel, T.; Cappelaere, B.; Galle, S.; Hanan, N.; Kergoat, L.; Levis, S.; Vieux, B.; Descroix, L.; Gosset, M.; Mougin, E.; et al. AMMA-CATCH studies in the Sahelian region of West-Africa: An overview. *J. Hydrol.* **2009**, *375*, 3–13. [CrossRef]
48. Massuel, S.; Cappelaere, B.; Favreau, G.; Leduc, C.; Lebel, T.; Vischel, T. Integrated surface water-groundwater modelling in the context of increasing water reserves of a Sahelian aquifer. *Hydrol. Sci. J.* **2011**, *56*, 1242–1264. [CrossRef]
49. Rockström, J.; Valentin, C. Hillslope dynamics of on-farm generation of surface water flows: The case of rainfed cultivation of pearl millet on sandy soil in the Sahel. *Agric. Water Manag.* **1997**, *33*, 183–210. [CrossRef]
50. Mauder, M.; Foken, T. Documentation and Instruction Manual of the Eddy Covariance Software Package TK2. Report No. 26, U. Bayreuth–Abt. Mikrometeorologie. 2004. Available online: <http://www.geo.uni-bayreuth.de/mikrometeorologie/ARBERG/ARBERG26.pdf> (accessed on 19 December 2004).
51. Wilczak, J.; Oncley, S.; Stage, S.A. Sonic anemometer tilt correction algorithms. *Bound. Layer Meteorol.* **2001**, *99*, 127–150. [CrossRef]
52. Schotanus, P.; Nieuwstadt, F.; De Bruin, H.A.R. Temperature measurement with a sonic anemometer and its application to heat and moisture fluxes. *Bound. Layer Meteorol.* **1983**, *26*, 81–93. [CrossRef]
53. Moore, C.J. Frequency response corrections for eddy correlation systems. *Bound. Layer Meteorol.* **1986**, *37*, 17–35. [CrossRef]
54. Webb, E.K.; Pearman, G.I.; Leuning, R. Correction of flux measurements for density effects due to heat and water vapour transfer. *Q. J. R. Meteorol. Soc.* **1980**, *106*, 85–100. [CrossRef]
55. Van Dijk, A.; Kohsiek, W.; De Bruin, H.A.R. Oxygen sensitivity of krypton and lyman—A hygrometers. *J. Atmos. Ocean. Technol.* **2003**, *20*, 143–151. [CrossRef]
56. Ochs, G.R.; Wilson, J.J. *A Second-Generation Large-Aperture Scintillometer*; NOAA Tech. Memo, ERL WPL-232; NOAA Environmental Research Laboratories Publ.: Boulder, CO, USA, 1993; Volume 177, pp. 117–132.
57. Meijninger, W.M.L.; Moene, A.; Hartogensis, O.; De Bruin, H.A.R. *User Manual and Technical Information to the Large Aperture Scintillometer*; Wageningen University: Wageningen, The Netherlands, 2000.
58. Wesely, M.L. The combined effect of temperature and humidity fluctuations on refractive index. *J. Appl. Meteorol.* **1976**, *15*, 43–49. [CrossRef]
59. Moene, A.F. Effects of water vapour on the structure parameter of the refractive index for near-infrared radiation. *Bound. Layer Meteorol.* **2003**, *107*, 635–653. [CrossRef]
60. Hartogensis, O.K.; Watts, C.J.; Rodriguez, J.C.; De Bruin, H.A.R. Derivation of an Effective Height for Scintillometers: La Poza Experiment in Northwest Mexico. *J. Hydrometeorol.* **2003**, *4*, 915–928. [CrossRef]
61. Panofsky, H.A.; Dutton, J.A. *Atmospheric Turbulence*; John Wiley: New York, NY, USA, 1984.
62. Andreas Edgar, L. Estimating Cn2 over snow and sea ice from meteorological quantities. In Proceedings of the SPIE 0926, Optical, Infrared, Millimeter Wave Propagation Engineering, Orlando, FL, USA, 10 August 1988.
63. Thiermann, V.; Grassl, H. The measurement of turbulent surface layer fluxes by use of bichromatic scintillation. *Bound. Layer Meteorol.* **1992**, *58*, 367–384. [CrossRef]
64. De Bruin, H.A.R.; van den Hurk, B.J.J.M.; Kohsiek, W. The scintillation method tested over a dry vineyard area. *Bound. Layer Meteorol.* **1995**, *76*, 25–40. [CrossRef]
65. Wyngaard, J.C. On surface-layer turbulence. In *Workshop on Micrometeorology*; Haugen, D.A., Ed.; AMS: Boston, MA, USA, 1973; pp. 101–149.

66. Chehbouni, A.; Watts, C.; Kerr, Y.H.; Dedieu, G.; Rodríguez, J.C.; Santiago, F.; Cayrol, P.; Boulet, G.; Goodrich, D.C. Methods to aggregate turbulent fluxes over heterogeneous surfaces: Application to SALSA data set in Mexico. *Agric. For. Meteorol.* **2000**, *105*, 133–144. [[CrossRef](#)]
67. Chehbouni, A.; Escadafal, R.; Duchemin, B.; Boulet, G.; Simonneaux, V.; Dedieu, G.; Mougenot, B.; Khabba, S.; Kharrou, H.; Maisongrande, P.; et al. An Integrated Modeling and Remote Sensing Approach for Hydrological Study in Arid and Semi-arid Regions: The SUDMED Programme. *Int. J. Remote Sens.* **2008**, *29*, 5161–5181. [[CrossRef](#)]
68. Ezzahar, J.; Chehbouni, A.; Hoedjes, J.C.B.; Chehbouni, A. On the application of scintillometry over heterogeneous grids. *J. Hydrol.* **2007**, *334*, 493–501. [[CrossRef](#)]
69. Hemakumara, H.M.; Chandrapala, L.; Moene, A.F. Evapotranspiration fluxes over mixed vegetation areas measured from large scintillometer. *Agric. Water Manag.* **2003**, *58*, 109–122. [[CrossRef](#)]
70. Hoedjes, J.C.B.; Zuurbier, R.M.; Watts, C.J. Large aperture scintillometer used over a homogeneous irrigated area, partly affected by regional advection. *Bound. Layer Meteorol.* **2002**, *105*, 99–117. [[CrossRef](#)]
71. Solignac, P.A.; Brut, A.; Selves, J.L.; Beteille, J.P.; Gastellu-Etchegorry, J.P.; Keravec, P.; Beziat, P.; Ceschia, E. Uncertainty analysis of computational methods for deriving sensible heat flux values from scintillometer measurements. *Atmos. Meas. Tech.* **2009**, *2*, 741–753. [[CrossRef](#)]
72. Horst, T.W.; Weil, J.C. How far is far enough? The fetch requirements for micrometeorological measurement of surface fluxes. *J. Atmos. Ocean. Technol.* **1994**, *11*, 1018–1025. [[CrossRef](#)]
73. Leclerc, M.Y.; Thurtell, G.W. Footprint prediction of scalar fluxes using a Markovian analysis. *Bound. Layer Meteorol.* **1990**, *52*, 247–258. [[CrossRef](#)]
74. Lewis, P.; Barnsley, M.J. Influence of the Sky Radiance Distribution on Various Formulations of the Earth Surface Albedo. Available online: <http://www2.geog.ucl.ac.uk/~plewis/LewisBarnsley1994.pdf> (accessed on 18 June 2018).
75. Wan, Z.; Dozier, J. A generalised split-window algorithm for retrieving land surface temperature from space, *IEEE Trans. Geosci. Remote Sens.* **1996**, *34*, 892–905.
76. Madeira, C. Generalised Split-Window Algorithm for Retrieving Land-Surface Temperature from MSG/SEVIRI Data. In Proceedings of the SAF on Land Surface Analysis Training Workshop, Lisbon, Portugal, 8–10 July 2002.
77. Kustas, W.P.; Norman, J.M. A two-source approach for estimating turbulent fluxes using multiple angle thermal infrared observations. *Water Resour. Res.* **1997**, *33*, 1495–1508. [[CrossRef](#)]
78. Brutsaert, W. *Evaporation into the Atmosphere*; D. Reidel: Dordrecht, The Netherlands, 1982.
79. Sauer, T.J.; Norman, J.M.; Tanner, C.B.; Wilson, T.B. Measurement of heat and vapor transfer at the soil surface beneath a maize canopy using source plates. *Agric. For. Meteorol.* **1995**, *75*, 161–189. [[CrossRef](#)]
80. Campbell, G.S.; Norman, J.M. *An Introduction to Environmental Biophysics*; Springer: New York, NY, USA, 1998.
81. Choudhury, B.J.; Idso, S.; Reginato, R. Analysis of an empirical model for soil heat flux under a growing wheat crop for estimating evaporation by an infrared-temperature based energy balance equation. *Agric. For. Meteorol.* **1987**, *39*, 283–297. [[CrossRef](#)]
82. Priestley, C.H.B.; Taylor, R.J. On the assessment of surface heat flux and evaporation using large-scale parameters. *Mon. Weather Rev.* **1972**, *100*, 81–92. [[CrossRef](#)]
83. Lhomme, J.P.; Monteny, B.; Amadou, M. Estimating sensible heat flux from radiometric temperature over sparse millet. *Agric. For. Meteorol.* **1994**, *68*, 77–91. [[CrossRef](#)]
84. Chehbouni, A.; Njoku, E.G.; Lhomme, J.P.; Kerr, Y.H. An approach for averaging surface temperature and surface fluxes over heterogeneous surfaces. *J. Clim.* **1995**, *5*, 1386–1393. [[CrossRef](#)]
85. Foken, T.; Wimmer, F.; Mauder, M.; Thomas, C.; Liebethal, C. Some aspects of the energy balance closure problem. *Atmos. Chem. Phys.* **2006**, *6*, 4395–4402. [[CrossRef](#)]
86. Heusinkveld, B.G.; Jacobs, A.F.G.; Holtslag, A.A.M.; Berkowicz, S.M. Surface energy balance closure in an arid region: Role of soil heat flux. *Agric. For. Meteorol.* **2004**, *122*, 21–37. [[CrossRef](#)]
87. Guyot, A.; Cohard, J.-M.; Anquetin, S.; Galle, S.; Lloyd, R. Combined analysis of energy and water balances to estimate latent heat flux of a Sudanian small catchment. *J. Hydrol.* **2009**, *375*, 227–240. [[CrossRef](#)]
88. Mauder, M.; Foken, T. Impact of post-field data processing on eddy covariance flux estimates and energy balance closure. *Meteorol. Z.* **2006**, *15*, 597–609. [[CrossRef](#)]

89. Yu, W.; Ma, M.; Wang, X.; Geng, L.; Tan, J.; Shi, J. Evaluation of MODIS LST Products Using Longwave Radiation Ground Measurements in the Northern Arid Region of China. *Remote Sens.* **2014**, *6*, 11494–11517. [[CrossRef](#)]
90. Aksakal, S.K. Geometric Accuracy Investigations of SEVIRI High Resolution Visible (HRV) Level 1.5 Imagery. *Remote Sens.* **2013**, *5*, 2475–2491. [[CrossRef](#)]
91. Verhoef, A.; Ottlé, C.; Cappelaere, B.; Murray, T.; Saux Picart, S.; Zribi, A.; Maignan, F.; Boulain, N.; Demarty, J.; Ramier, D. Spatio-temporal surface soil heat flux estimates from satellite data; results for the AMMA experiment, Fakara supersite. *Agric. For. Meteorol.* **2012**, *154–155*, 55–66. [[CrossRef](#)]
92. Brutsaert, W. On a derivable formula for long-wave radiation from clear skies. *Water Resour. Res.* **1975**, *11*, 742–744. [[CrossRef](#)]
93. Thom, A.S. Momentum absorption by vegetation. *Q. J. R. Meteorol. Soc.* **1971**, *97*, 414–428. [[CrossRef](#)]
94. Shaw, R.H.; Pereira, A.R. Aerodynamic roughness of a plant canopy: A numerical experiment. *Agric. Meteorol.* **1982**, *26*, 51–65. [[CrossRef](#)]
95. Hoedjes, J.C.B.; Chehbouni, A.; Ezzahar, J.; Escadafal, R.; De Bruin, H.A.R. Comparison of large aperture scintillometer and Eddy covariance measurements: Can thermal infrared data be used to capture footprint induced differences? *J. Hydrometeorol.* **2007**, *8*, 144–159. [[CrossRef](#)]
96. Lagouarde, J.P.; Irvine, M.; Bonnefond, J.M.; Grimmond, C.S.B.; Long, N.; Oke, T.R.; Salmond, J.A.; Offerle, B. Monitoring the sensible heat flux over urban areas using large aperture scintillometry: Case study of marseille city during the escompte experiment. *Bound. Layer Meteorol.* **2005**, *118*, 449–476. [[CrossRef](#)]
97. Bindlish, R.; Kustas, W.P.; French, A.N.; Diak, G.R.; Mecikalski, J.R. Influence of near-surface soil moisture on regional scale heat fluxes: Model results using microwave remote sensing data from SGP97. *IEEE Trans. Geosci. Remote Sens.* **2001**, *39*, 1719–1728. [[CrossRef](#)]
98. Colaizzi, P.D.; Agam, N.; Tolck, J.A.; Evett, S.R.; Howell, T.A.; Gowda, P.H.; Anderson, M.C. Two source energy balance model to calculate E; T; and ET: Comparison of Priestley-Taylor and Penman-Monteith formulations and two time scaling methods. *Trans. ASABE* **2014**, *57*, 479–498.
99. Eichinger, W.E.; Parlange, M.B.; Stricker, H. On the concept of equilibrium evaporation and the value of the priestley-taylor coefficient. *Water Resour. Res.* **1996**, *32*, 161–164. [[CrossRef](#)]
100. Song, L.; Kustas, W.P.; Liu, S.; Colaizzi, P.D.; Nieto, H.; Xu, Z.; Ma, Y.; Li, M.; Xu, T.; Agam, N.; et al. Applications of a thermal-based two-source energy balance model using Priestley-Taylor approach for surface temperature partitioning under advective conditions. *J. Hydrol.* **2016**, *540*, 574–587. [[CrossRef](#)]
101. Anderson, M.C.; Norman, J.M.; Mecikalski, J.R.; Otkin, J.A.; Kustas, W.P. A climatological study of evapotranspiration and moisture stress across the continental United States based on thermal remote sensing: 1. Model formulation. *J. Geophys. Res. Atmos.* **2007**, *112*. [[CrossRef](#)]

