



HAL
open science

Charting the Parameter Space of the 21-cm Power Spectrum

Aviad Cohen, Anastasia Fialkov, Rennan Barkana

► **To cite this version:**

Aviad Cohen, Anastasia Fialkov, Rennan Barkana. Charting the Parameter Space of the 21-cm Power Spectrum. *Monthly Notices of the Royal Astronomical Society*, 2018, 478 (2), pp.2193-2217. 10.1093/mnras/sty1094 . hal-01886590

HAL Id: hal-01886590

<https://hal.science/hal-01886590v1>

Submitted on 31 Dec 2024

HAL is a multi-disciplinary open access archive for the deposit and dissemination of scientific research documents, whether they are published or not. The documents may come from teaching and research institutions in France or abroad, or from public or private research centers.

L'archive ouverte pluridisciplinaire **HAL**, est destinée au dépôt et à la diffusion de documents scientifiques de niveau recherche, publiés ou non, émanant des établissements d'enseignement et de recherche français ou étrangers, des laboratoires publics ou privés.



Distributed under a Creative Commons Attribution 4.0 International License

Charting the parameter space of the 21-cm power spectrum

Aviad Cohen,¹★ Anastasia Fialkov² and Rennan Barkana^{1,3,4,5}

¹*Raymond and Beverly Sackler School of Physics and Astronomy, Tel Aviv University, Tel Aviv 69978, Israel*

²*Department of Astronomy, Harvard University, 60 Garden Street, MS-51, Cambridge, MA 02138, USA*

³*Sorbonne Universités, Institut Lagrange de Paris (ILP), Institut d'Astrophysique de Paris, UPMC Univ Paris 06/CNRS, F-75014 Paris, France*

⁴*Department of Astrophysics, University of Oxford, Denys Wilkinson Building, Keble Road, Oxford OX1 3RH, UK*

⁵*Perimeter Institute for Theoretical Physics, 31 Caroline St N., Waterloo, ON N2L 2Y5, Canada*

Accepted 2018 April 22. Received 2018 March 25; in original form 2017 September 7

ABSTRACT

The high-redshift 21-cm signal of neutral hydrogen is expected to be observed within the next decade and will reveal epochs of cosmic evolution that have been previously inaccessible. Due to the lack of observations, many of the astrophysical processes that took place at early times are poorly constrained. In recent work we explored the astrophysical parameter space and the resulting large variety of possible global (sky-averaged) 21-cm signals. Here we extend our analysis to the fluctuations in the 21-cm signal, accounting for those introduced by density and velocity, Ly α radiation, X-ray heating, and ionization. While the radiation sources are usually highlighted, we find that in many cases the density fluctuations play a significant role at intermediate redshifts. Using both the power spectrum and its slope, we show that properties of high-redshift sources can be extracted from the observable features of the fluctuation pattern. For instance, the peak amplitude of ionization fluctuations can be used to estimate whether heating occurred early or late and, in the early case, to also deduce the cosmic mean ionized fraction at that time. The slope of the power spectrum has a more universal redshift evolution than the power spectrum itself and can thus be used more easily as a tracer of high-redshift astrophysics. Its peaks can be used, for example, to estimate the redshift of the Ly α coupling transition and the redshift of the heating transition (and the mean gas temperature at that time). We also show that a tight correlation is predicted between features of the power spectrum and of the global signal, potentially yielding important consistency checks.

Key words: galaxies: formation – galaxies: high redshift – intergalactic medium – cosmology: theory .

1 INTRODUCTION

The most promising probe of the early universe and the epoch of primordial star formation (cosmic dawn) is the redshifted spectral line of atomic hydrogen, which has a rest-frame wavelength of 21 cm. This signal is expected to be produced prior to complete reionization by abundant neutral hydrogen in the intergalactic medium (IGM) and should allow us to explore cosmic history down to $z \sim 6$. Because the signal depends both on the cosmological model and on astrophysics, it contains abundant information about the Universe at early times (e.g. Furlanetto, Oh & Briggs 2006; Barkana 2016).

Observational efforts to date have resulted in limits on both the global 21-cm signal and the power spectrum of 21-cm fluctuations. Experiments that are currently taking (or analysing) data to detect the power spectrum from the epoch of reionization (EoR) include the Low Frequency Array (LOFAR, Patil et al. 2017), the Precision

Array to Probe the EoR (PAPER; Parsons et al. 2014; Ali et al. 2015; Jacobs et al. 2015), the Murchison Wide-field Array (Bowman et al. 2013; Beardsley et al. 2016), and the Hydrogen EoR Array (HERA, Pober et al. 2014; DeBoer et al. 2017); meanwhile, an effort is being made to measure the global signal at both the low-redshift (EoR) and high-redshift (cosmic dawn) regimes, by EDGES (the Experiment to Detect the Global EoR Signature, Bowman & Rogers 2010; Monsalve et al. 2017), SARAS (the Shaped Antenna measurement of the background Radio Spectrum, Singh et al. 2017a,b), BIGHORNS (Broad-band Instrument for Global Hydrogen Reionisation Signal, Sokolowski et al. 2015), SCI-HI (Sonda Cosmologica de las Islas para la Deteccion de Hidrogeno Neutro, Voytek et al. 2014), and LEDA (Large-Aperture Experiment to Detect the Dark Ages, Bernardi et al. 2016; Price et al. 2018). Planned experiments (or under construction) include the New Extension in Nancay Upgrading LOFAR (NenuFAR, Zarka et al. 2012), the Square Kilometre Array (SKA, Koopmans et al. 2015), and the Dark Ages Radio Explorer (DARE, Burns et al. 2015); these instruments will probe both the global signal and its power spectrum over a wide range of epochs.

* E-mail: aviadc11@gmail.com

Observing the 21-cm signal will shed light on the astrophysical processes that shaped the young Universe. One of the most important questions that can be answered by detecting this signal is how some of the first stars came to be. The abundance and spatial distribution of high-redshift galaxies determine the pattern of the radiative backgrounds produced by sources of light, and thus have a strong effect on the fluctuations in the 21-cm signal. A major parameter in this is the minimum mass of star-forming haloes, M_{\min} , which is usually set by the requirement of efficient gas cooling. Because they are formed in highly overdense regions, massive haloes are rarer and more highly clustered than lighter ones (Barkana & Loeb 2004), and imprint stronger fluctuations in the signal. Theoretical work shows that star formation in a dark matter halo becomes possible only if the halo is massive enough to radiatively cool the infalling gas (e.g. Tegmark et al. 1997). For instance, molecular hydrogen, H_2 , one of the available building blocks in the pristine environment at high redshifts, has to be gravitationally accelerated and shock-heated to temperatures higher than ~ 300 K in order to initiate radiative cooling, which leads to star formation in haloes above $M_{\min} \sim 10^5 M_{\odot}$ (e.g. Tegmark et al. 1997; Bromm, Coppi & Larson 2002; Yoshida et al. 2003). If molecular hydrogen is unavailable, stars will form via cooling of atomic hydrogen in more massive haloes, above $M_{\min} \sim 10^7 M_{\odot}$ (e.g. Barkana & Loeb 2001).

Formation of stars through cooling of H_2 is sensitive to various feedback processes. In particular, radiation emitted by stars includes photons in the Lyman–Werner (LW) band (11.2–13.6 eV), which dissociate hydrogen molecules (Haiman, Rees & Loeb 1997) thus boosting the minimal mass of star-forming haloes (Haiman, Abel & Rees 2000; Machacek, Bryan & Abel 2001; Wise & Abel 2007; O’Shea & Norman 2008). The efficiency of this feedback mechanism and thus the transition point of star formation from molecular cooling to atomic cooling are highly uncertain (Visbal et al. 2014; Schauer et al. 2015). In addition to the LW feedback, star formation in small haloes is sensitive to other factors, such as the relative streaming velocity between dark matter and gas, which suppresses star formation in a spatially inhomogeneous way in haloes below $\sim 10^6 M_{\odot}$ (Dalal, Pen & Seljak 2010; Tsaliakhovich & Hirata 2010; Tsaliakhovich, Barkana & Hirata 2011; Visbal et al. 2012; Fialkov 2014). Another possible way to quench star formation in small haloes is via supernova explosions that can expel gas from light haloes, raising M_{\min} well above the atomic cooling threshold (e.g. Wyithe & Loeb 2013). On the other hand, supernova explosions can also revive star formation in light haloes by enriching gas with metals. Because metal-rich gas can allow a lower M_{\min} than even the H_2 cooling channel, small haloes may contribute to star formation at high redshifts via metal-line cooling despite the effect of the LW feedback. Current numerical simulations suggest that star formation is likely to be inefficient in small haloes, but whether metal cooling contributes significantly to high-redshift star formation is still uncertain (e.g. Jeon et al. 2014; Wise et al. 2014; O’Shea et al. 2015; Cohen, Fialkov & Barkana 2016). Finally, when the gas in the IGM is photoheated above 10^4 K by ionizing photons, photoheating feedback becomes efficient and gas stops accreting on to haloes below 10^8 – $10^9 M_{\odot}$ (e.g. Rees 1986; Weinberg, Hernquist & Katz 1997; Navarro & Steinmetz 2000; Sobacchi & Mesinger 2013; Cohen et al. 2016; Ocvirk et al. 2016; Finlator et al. 2017). However, this process becomes significant only at relatively low redshifts, during the advanced stages of reionization. Future 21-cm measurements will be able to constrain the cooling channel and the efficiency of primordial star formation.

Stars and their remnants produce radiative backgrounds that strongly affect the environment. For instance, the temperature of

the IGM rises due to the X-ray radiation produced by the first heating sources. Even fixing the total energy emitted in X-rays, different spectral energy distributions (SEDs) can lead to completely different heating histories and, thus, predicted 21-cm signals (Fialkov & Barkana 2014; Fialkov, Barkana & Visbal 2014a; Pacucci et al. 2014). Because the mean free path is larger for high-energy photons, hard photons travel further away from the source before depositing their energy into the IGM. This leads to a delayed, weaker (due to redshift losses), and more spatially uniform heating of the universe in the case of sources with a hard SED. The temperature of the gas directly affects the 21-cm intensity. As a result, X-ray sources imprint their signature in the signal from neutral hydrogen. By detecting the characteristic signature, the nature and distribution of the first X-ray sources can be studied. At present, the high-redshift X-ray population is poorly constrained; however, available observations yield upper and lower limits on the X-ray luminosity of the sources (Fialkov et al. 2017). Upper limits come from the unresolved soft X-ray background (Dijkstra et al. 2012; Fialkov et al. 2017), which also provides limits on the spectral index of the X-ray SED, assuming the power-law scenario (McQuinn 2012). Lower limits can be extracted from the upper limits on the 21-cm power spectrum (Ali et al. 2015; Pober et al. 2015).

There are several candidate X-ray sources discussed in the literature, and at present it is unclear which one dominates at high redshift. High-mass X-ray binaries (XRBs) are currently the most plausible dominant source (Mirabel et al. 2011). This possibility is supported by a detailed population synthesis simulation that indicated that XRBs dominate over the contribution of quasars at $z \gtrsim 6$ –8 (Fragos et al. 2013). Although the majority of X-ray photons emitted by XRBs are hard, with the X-ray SED peaking around 1–3 keV, the SED used in previous models has often been a soft power law (e.g. Furlanetto 2006), which might be more appropriate for describing emission by gas heated by supernova explosions within galaxies. The third possible source of X-ray radiation is a population of mini-quasars (MQ), central black holes in early star-forming haloes (Madau et al. 2004). The properties of these objects, including their contribution to heating and reionization, are highly uncertain, since their masses and the characteristics of their host galaxies are very different from those of the central black holes observed today in much more massive haloes. Because it takes time for a supermassive black hole to grow, MQ tend to be significant only in relatively massive haloes and, therefore, in our models their heating becomes important at lower redshifts than the other two options. The bolometric luminosity of X-ray sources, L_X , is another free parameter. Both population synthesis simulations (Fragos et al. 2013) and observations (Brorby et al. 2016) suggest that in the case of XRBs, L_X is larger in metal-poor high-redshift galaxies compared to their metal-rich low-redshift counterparts. The same studies, as well as other observations (Mineo et al. 2012a; Mineo, Gilfanov & Sunyaev 2012b), also indicate that the luminosity is proportional to the star formation rate (SFR), allowing us to define a L_X –SFR relation. However, the exact relation between L_X and the SFR depends on the nature of the sources, and it is highly uncertain, especially at high redshifts where there are few observational constraints.

In addition to X-ray radiation, the first luminous objects emitted ultraviolet (UV) radiation, which ionized the neutral hydrogen in the IGM. Thanks to the effect of ionized gas on the cosmic microwave background (CMB), the value of this parameter is relatively well constrained (compared to the other parameters that we consider), with a total scattering optical depth of $\tau = 0.055 \pm 0.009$ (Planck Collaboration XLVI 2016b). The main sources of ionizing radiation

are believed to be stars; however, reionization by quasars may also be possible (Madau & Haardt 2015).

In previous work (Cohen et al. 2017), we explored the space of astrophysical parameters, varying the parameters that play crucial roles in driving the 21-cm signal, namely: the minimal mass of star-forming haloes and the star formation efficiency (which reflect the dominant cooling channel and the efficiency of internal feedback), the parameters of X-ray heating (the SED and the bolometric luminosity of X-ray sources), and the total reionization optical depth and maximum mean free path of ionizing photons. In that work, we used our simulations to predict the global 21-cm signal (i.e. the mean spectrum over the relevant frequency range), for 193 different combinations of the astrophysical parameters. We showed that the expected signal fills a large parameter space, but with a fixed general shape of the global 21-cm signal. Using the 193 models we identified relations between features of the spectrum and the astrophysical parameters. Since we showed these relations to hold over a very wide range of possible astrophysics parameters, these relations can be used to directly link future measurements of the global signal to astrophysical quantities in a mostly model-independent way.

The approach taken in Cohen et al. (2017) was novel in that it covered a substantially wider astrophysical parameter space than other work at the time (e.g. Greig & Mesinger 2015; Hassan et al. 2017). For example, such works often focus on the late stages of reionization assuming that cosmic heating has saturated and thus the parameters of the X-ray sources do not matter. They also usually assume that small haloes, those below the atomic cooling threshold, do not contribute significant star formation. Such simplifying assumptions are often made because algorithms such as the Monte Carlo Markov Chain (MCMC) analysis tool (Greig & Mesinger 2015) need to run the simulation many times before they succeed to fill up the required parameter space. However, given the current lack of observational constraints, the space of possibilities is still extremely wide. For example, the relative timing between reionization and the heating era is uncertain. It has been recently recognized that heating occurs late in many scenarios, and the cosmic gas can still be colder than the CMB during the early stages of reionization (Fialkov 2014; Cohen et al. 2017; Madau & Fragos 2016; Mirocha, Furlanetto & Sun 2017). Thus, more recent papers based on the seminumerical code 21cmFAST (Mesinger, Furlanetto & Cen 2011) relax the saturated heating assumption and include heating parameters (Greig & Mesinger 2018) or even cosmological parameters (Kern et al. 2017). An additional study, which was done recently using a fully coupled radiative hydrodynamic high-resolution simulations performed with the LICORICE code, resulted in 45 different scenarios with three astrophysical parameters varied (Semelin et al. 2017). The parameter studies were used to train artificial neural networks (Shimabukuro & Semelin 2017; Schmit & Pritchard 2018) and develop an emulator approach (Kern et al. 2017) which can reduce dramatically the computation time, though at the cost of a possible inaccuracy of the results. The purpose of the works presented above is to estimate the parameters (discussed in Section 2.2) given power spectrum measurements using different kinds of fitting methods (e.g. MCMC or neural networks). In this paper we take a different approach and search for properties of the power spectrum that are directly linked to physical properties of the high-redshift universe (without the need of fitting).

This paper is a follow up to Cohen et al. (2017). Here we use the same compilation of models to map out the space of possible 21-cm power spectra. We explore features of the 21-cm power spectrum and aim to classify the main observable properties of the evolution in redshift of the power spectrum. Another goal of ours is

to establish relations between these features and the astrophysical parameters. This paper is organized as follows: In Section 2 we discuss the general properties of the 21-cm power spectrum (Section 2.1), and then outline and discuss the astrophysical parameter space (Section 2.2). In Section 3 we illustrate our predictions in detail for a particular choice of astrophysical parameters, while in Section 4 we generalize our results to the entire parameter space, focusing on correlations between the redshift evolution of the power spectrum (and that of its slope) and the properties of early galaxies. In Section 5 we show that the timing of cosmic milestones (such as the redshift at which the IGM was heated to the temperature of the CMB) can be extracted from the evolution of the slope, as well as from the spectral shape of the global 21-cm signal. In the same section we also provide consistency relations that could be used to verify experimental results once the measurements of both the global signal and the power spectrum are available. Finally, we summarize and conclude in Section 6.

2 SIMULATED 21-CM SIGNAL

Our goal is to explore the high-redshift astrophysical parameter space and create a mock 21-cm signal for a large number of parameter sets. To this end we use our own seminumerical method first introduced by Visbal et al. (2012), and similar in its implementation to 21cmFAST (Mesinger et al. 2011). The framework follows the evolution of the density and velocity fields in time in a large cosmological volume (a 384^3 Mpc³ box) with coarse resolution (3 Mpc), and extensively uses sub-grid models to implement physics on smaller scales (Fialkov 2012; Visbal et al. 2012; Fialkov 2013; Fialkov & Barkana 2014; Fialkov et al. 2014a,b; Cohen et al. 2016). The star formation rate in each cell, at each redshift, and in each halo mass bin is computed using the extended Press–Shechter formalism (Barkana & Loeb 2004). Assuming Population II star formation (Barkana & Loeb 2005b) and properly accounting for time delay effects, the simulation calculates various radiative backgrounds created by stars and their remnants, including the Ly α background which is needed to source the Wouthuysen–Field (WF) coupling (Wouthuysen 1952; Field 1958), LW radiation responsible for radiative feedback, X-rays that heat the gas, and ionizing UV radiation. This simulation takes into account the effect of relative streaming velocity between dark and baryonic matter (Tselikhovich & Hirata 2010; Visbal et al. 2012), and the photoheating feedback (Cohen et al. 2016). In addition, we include accurate X-ray heating (including the effect of local reionization) and Ly α fluctuations (approximately including the effect of multiple scattering), plus the possibility of having significant star formation in haloes below the atomic cooling mass, in which case spatially inhomogeneous processes such as the streaming velocity and LW feedback play a key role (and are included in our 21-cm code but not in others).

2.1 The 21-cm power spectrum

An output of the simulation is the inhomogeneous 21-cm signal calculated for every cell in the redshift range 6–50. The brightness temperature observed against the CMB is

$$T_b = 26.8 x_{\text{HI}} \left(\frac{1+z}{10} \right)^{1/2} (1+\delta) \frac{x_{\text{tot}}}{1+x_{\text{tot}}} \left[1 - \frac{T_{\text{CMB}}}{T_{\text{gas}}} \right] \text{mK}, \quad (1)$$

where x is the neutral hydrogen fraction, δ is the matter density contrast, $x_{\text{tot}} = x_c + x_\alpha$ is the sum of the coupling coefficients which includes collisional coupling (x_c) and the WF coupling due to Ly α

photons (x_α), T_{CMB} is the CMB temperature and T_{gas} is the (kinetic) gas temperature. There are two other effects that we include in our simulations but omit from equation (1) in order to simplify the discussion here. One is the effect of peculiar velocities (Bharadwaj & Ali 2004; Barkana & Loeb 2005a); while they produce line-of-sight anisotropy that can be used for model-independent inferences of early cosmic history (Fialkov, Barkana & Cohen 2015), in this paper we focus on the more easily measured spherically averaged 21-cm power spectrum. The other effect is that of low-temperature corrections to Ly α scattering (Chen & Miralda-Escudé 2004; Chuzhoy 2006; Hirata 2006; Pritchard & Furlanetto 2006; Barkana 2016).

Equation (1) contains four different terms that can source fluctuations in the total brightness temperature:

(i) Fluctuations in the matter density affect the signal via the matter density contrast, δ , defined as $\delta = \rho/\bar{\rho} - 1$, where ρ is the local density and $\bar{\rho}$ is the mean density; they also produce peculiar velocity fluctuations, determined by the density fluctuations through the continuity equation. Thus, we usually show the sum of the two contributions and denote it $\delta + v$; the variance of this sum is 28/15 times that of δ alone (but the cross-correlation with other 21-cm fluctuations is more complicated).

(ii) The term $x_{\text{tot}}/(1 + x_{\text{tot}})$ depends on the total coupling coefficient and fluctuates due to inhomogeneous collisions at the highest redshifts and the non-uniform production of Ly α photons at later times.

(iii) The term $1 - T_{\text{CMB}}/T_{\text{gas}}$ varies due to inhomogeneous heating.

(iv) H_{I} The inhomogeneous process of reionization is encoded in the neutral fraction, x .

As with the definition of δ , we define contrasts for each one of the other three terms, δ_{coup} , δ_{heat} , and δ_{ion} , respectively. To first order, different sources of fluctuations are additive (although they may have different signs), and at each redshift the contrast in brightness temperature is approximately

$$\delta_{T_b} \approx (\delta + v) + \delta_{\text{coup}} + \delta_{\text{heat}} + \delta_{\text{ion}}. \quad (2)$$

In reality there are also non-linear terms, and cross-correlations contribute to the power spectrum, but it is useful to look at the separate contributions of the sources of fluctuations in order to understand which of them dominate at any given time.

It is often more convenient to discuss fluctuations in Fourier (rather than real) space, in terms of the comoving wavenumber, k , which is inversely proportional to the comoving scale. The total power spectrum $P_{T_b}(k)$ is defined by

$$\langle \tilde{\delta}_{T_b}(\mathbf{k}) \tilde{\delta}_{T_b}^*(\mathbf{k}') \rangle = (2\pi)^3 \delta_D(\mathbf{k} - \mathbf{k}') P_{T_b}(k), \quad (3)$$

where $\tilde{\delta}_{T_b}(\mathbf{k})$ is the Fourier transform of δ_{T_b} , \mathbf{k} is the comoving wavevector, δ_D is the Dirac delta function, and angle brackets denote the ensemble (or spatial) average. Finally, we use the convention of expressing the power spectrum in terms of the variance in mK² units:

$$\Delta^2 = \langle T_b \rangle^2 \frac{k^3 P_{T_b}(k)}{2\pi^2}, \quad (4)$$

where the expression $k^3 P_{T_b}(k)/2\pi^2$ is dimensionless. Because the universe is homogeneous and isotropic on large cosmological scales, the fluctuations tend to decrease with increasing scale (decreasing wavenumber).

For a typical set of astrophysical parameters, fluctuations in the 21-cm signal on large cosmological scales, e.g. $k \sim 0.1 \text{ Mpc}^{-1}$, and in the redshift range $5 \lesssim z \lesssim 35$ exhibit three distinct peaks (e.g.

Barkana & Loeb 2005b; Pritchard & Furlanetto 2007; Pritchard & Loeb 2008; Santos et al. 2008; Baek et al. 2010; Mesinger et al. 2011; Fialkov & Barkana 2014). Prior to significant star formation, the 21-cm brightness temperature is driven by interatomic collisions and interactions with the CMB photons. While collisions dominate at the highest redshifts, driving the 21-cm brightness temperature to the kinetic temperature of the IGM, thermal equilibrium with the CMB takes over once the universe expands enough to render collisions inefficient. When the first stars form in rare peaks of the density field and create an inhomogeneous Ly α background, WF coupling becomes efficient. Fluctuations are induced by the Ly α peak around $z \sim 25$ (when $x_{\text{tot}} \sim x_\alpha \sim 1$) and disappear once the coupling saturates (i.e. $x_{\text{tot}} \sim x_\alpha \gg 1$). At the same time, the X-ray background builds up, leading to an increase in the temperature of the gas. This non-uniform heating creates fluctuations with a peak power at redshift ~ 15 . When heating becomes saturated ($T_{\text{gas}} \gg T_{\text{CMB}}$) the signal no longer depends on the gas temperature. Fluctuations at low redshift ($z \sim 10$) are dominated by patchy reionization. However, as we show below, this overall, standard picture is not universal, and the power spectrum as a function of redshift can have various numbers of peaks (between one and three) depending on the scale and on the particular choice of astrophysical parameters (Baek et al. 2010; Mesinger, Ferrara & Spiegel 2013).

2.2 The parameter space

Existing observational evidence and theoretical arguments place very weak constraints on the astrophysical properties of the first luminous objects, which translates into a large uncertainty in the predicted 21-cm signal. For instance, Cohen et al. (2017) showed that the current astrophysical parameter space yields global 21-cm spectra with the depth of the absorption trough feature anywhere in the $-250 \text{ mK} \lesssim T_b \lesssim -25 \text{ mK}$ range. Here we explore the implications of this large parameter space for the 21-cm power spectrum.

We first review the relevant parameters (same as in Cohen et al. 2017, where complete details are given) and quote the range within which they are allowed to vary:

(i) The **star formation efficiency** is the fraction of gas in dark matter haloes that is converted into stars, f_* . In general, this fraction depends on halo mass and the cooling channel through which stars form. The efficiency measured in numerical simulations shows a large scatter, especially for the light haloes that dominate the early universe (Wise et al. 2014; O'Shea et al. 2015; Xu et al. 2016). Our parameter f_* is actually the star formation efficiency in large haloes (above the atomic cooling threshold), where for smaller haloes we consider two different dependencies of f_* on the halo mass: (i) a constant down to the minimum mass and (ii) a gradual low-mass cutoff (see equation 4 in Cohen et al. 2017). We vary the star formation efficiency from 0.5 per cent to 50 per cent, with 5 per cent being our fiducial value.

(ii) The **minimum halo mass for star formation**, M_{min} , discussed earlier in Section 1, can be expressed in terms of the circular velocity, V_c . Here we entertain a few possibilities: star formation in molecular cooling haloes (i.e. down to $V_c = 4.2 \text{ km s}^{-1}$, affected by LW feedback and the streaming velocity), atomic cooling haloes ($V_c = 16.5 \text{ km s}^{-1}$), via metal line cooling ($V_c = 4.2 \text{ km s}^{-1}$ without LW feedback but with the streaming velocity), or, finally, in massive or supermassive haloes (e.g. due to strong supernovae feedback; a minimum $V_c = 35.5$ or 76.5 km s^{-1} , respectively). We note that since both cooling and internal feedback depend on the depth of the

potential, which is measured by V_c , it is more physical to assume a fixed V_c with redshift rather than a fixed M_{\min} .

(iii) In order to accommodate the variety of X-ray sources we use two quite different **X-ray SEDs** that bracket a large range: (i) the commonly used soft power-law spectrum (Furlanetto 2006), and (ii) a hard spectrum that corresponds to XRBs (Fragos et al. 2013; Fialkov et al. 2014a). In addition, we consider MQ (sources expected to have a hard SED similar to that of XRBs, e.g. Tanaka et al. 2012). The evolution in time of a population of MQ is different from X-ray binaries, i.e. with a much later build-up of the X-ray intensity, since the X-ray luminosity has an extra dependence on the halo mass (assuming a similar relation between black hole and halo mass as observed at low redshift).

(iv) The **X-ray efficiency**, f_X , accounts for the uncertain normalization of the L_X -SFR relation. We define $L_X/\text{SFR} = 3 \times 10^{40} f_X$ ($\text{erg s}^{-1} M_{\odot}^{-1} \text{ yr}$) for the cases of XRBs or the soft SED (Fialkov et al. 2014a). For the MQ the L_X -SFR relationship depends on both the redshift and halo mass. Our fiducial value is $f_X = 1$, but we vary it between zero and a few hundred. A negligible amount of X-rays is not yet ruled out for some models, while the upper limit (which is model-dependent) is determined by saturating the unresolved soft X-ray background observed by *Chandra* in the 0.5–2 keV band (Lehmer et al. 2012; Fialkov et al. 2017).

(v) Finally, we vary the **CMB optical depth**, τ . Our fiducial value is $\tau = 0.066$, which corresponds to the most recent measurement of the optical depth when we began this project (Planck Collaboration XLVII 2016a). Given the rather large uncertainty in the measured value, we also consider higher values of τ , including values of $\tau > 0.09$ that now seem unlikely. In addition, we consider some cases with $\tau = 0.055$ to verify whether or not our conclusions are biased by the relatively high fiducial optical depth. To get the desired optical depth we vary the ionizing efficiency for each case as described in Cohen et al. (2017). An additional parameter we use to model reionization is the mean free path of ionizing photons, R_{mfp} (see Cohen et al. 2017). Our fiducial value is $R_{\text{mfp}} = 70 \text{ Mpc}$; however, we also included cases with $R_{\text{mfp}} = 5$ and 20 Mpc .

As we will see below, the shape and redshift evolution of the power spectrum varies greatly among various sets of plausible astrophysical parameters. For instance, the difference between two otherwise identical models but with a hard or soft X-ray SED, as discussed in the next section, is dramatic (see also Fialkov & Barkana 2014; Fialkov et al. 2014a). In order to fully explore the effect of these parameters on the expected 21-cm signal we run our simulation for 202 different combinations of the five parameters described above (the full list of cases appears in Appendix A and is summarized in table 1 of Cohen et al. 2017). Except for a few cases, all the considered parameters are well within the strongest limits established by recent 21-cm power spectrum data (Ali et al. 2015; Pober et al. 2015) and CMB data (Planck Collaboration XIII 2016c), and do not saturate the unresolved soft X-ray background (Lehmer et al. 2012).

3 CASE STUDY

In order to establish some intuition we begin with a relatively simple case, and examine in detail the predictions for a particular case (which we refer to as our *standard*), which assumes the atomic cooling minimum mass, $f_* = 0.05$, $f_X = 1$, XRBs, and $\tau = 0.066$ (#53 in Appendix A). We demonstrate how much varying the X-ray SED affects predictions by comparing this model to case #55 which has a soft X-ray SED but otherwise identical parameters.

The evolution of the power spectra is inherently a function of two dimensions, as the power spectrum depends on both frequency/redshift and scale. We show this full dependence in two-dimensional colour plots (top panels of Fig. 1). At different stages of cosmic history the total power in the 21-cm fluctuations can vary anywhere between 0.001 and 1000 mK^2 , with strong fluctuations shown in red and weak fluctuations in blue. For our standard case, WF coupling turns on at around $z \sim 30$ when the first significant population of stars appears, creating an inhomogeneous Ly α background which imprints a broad peak in the 21-cm spectrum at $z \sim 20$. The effect of inhomogeneous heating is visible later at $z \sim 15$, while the signature of reionization dominates at $z \sim 10$.

Predictions of the model #55 are the same except for the effect of X-rays, which imprints a strong signature in the intermediate redshift range and on large scales (Fialkov & Barkana 2014). Consider first the small-scale regime ($k \gtrsim 0.5 \text{ Mpc}^{-1}$). On these scales, which are below the typical mean free path of X-ray photons for both the hard and the soft SED, heating fluctuations are washed out (although more so in the hard SED case, where there is a clear drop in the power spectrum at the heating transition), and we only see two high power regions caused by (i) inhomogeneous Ly α radiation at the high-redshift end and (ii) ionizing fluctuations at the low-redshift end. In both cases, the signature of reionization first appears at the small-scale end and propagates to larger scales at lower redshifts, as the ionized bubbles grow. The qualitative difference between the two maps is on large scales ($k < 0.5 \text{ Mpc}^{-1}$) that exceed the mean free path of a typical X-ray photon in the case of the soft SED, but are still below the mean free path of photons in the hard SED case. (Note that at $z \sim 20$ the mean free path is longer than 100 Mpc for photons with energies above $\sim 1 \text{ keV}$.) As a result, X-ray heating imprints a strong peak in the former case, compared to a barely noticeable peak (and only at $k = 0.1 \text{ Mpc}^{-1}$ and below) in the latter case.

A brief note on scales: a half-wavelength equal to our pixel size (corresponding to the Nyquist critical frequency) is $k \sim 1 \text{ Mpc}^{-1}$. At the other end, a half-wavelength equal to the size of our box corresponds to $k \sim 0.008 \text{ Mpc}^{-1}$, but even k values that are a few times that suffer from being averaged over only a small number of samples (as we have verified by comparison to larger simulation boxes). Thus, in order to avoid edge effects at both ends, we only use the range $k = 0.05\text{--}1 \text{ Mpc}^{-1}$, and focus on the specific values $k = 0.1 \text{ Mpc}^{-1}$ (which we refer to as representing large scales) and $k = 0.5 \text{ Mpc}^{-1}$ (small scales).

To follow the evolution of fluctuations with redshift more closely, it is useful to examine the behaviour of the total power spectrum at a fixed comoving scale, which we show in the middle panels of Fig. 1 for $k = 0.1 \text{ Mpc}^{-1}$ (solid black, representing large scales) and $k = 0.5 \text{ Mpc}^{-1}$ (dashed black, representing small scales). In agreement with the colour plot, on large scales the case with a soft SED shows three separate peaks dominated by Ly α , X-ray, and ionization fluctuations, respectively; while the other (hard SED) case has only two peaks, dominated by Ly α and by ionization fluctuations. In the latter case X-rays contribute only a knee around $z \sim 15$. In the small-scale regime the signatures of a soft and hard SED are more similar: the gas temperature is nearly uniform on such scales in both cases, and there is no heating peak. In both of these cases there are two peaks in the absolute value of the global 21-cm temperature, one in absorption (when the Ly α coupling saturates and X-ray heating first becomes significant), and one in emission (after heating saturates); they are separated by a minimum near the cosmic heating transition (though $k = 0.5 \text{ Mpc}^{-1}$ is a borderline value in the soft SED case, a scale large enough that the temperature

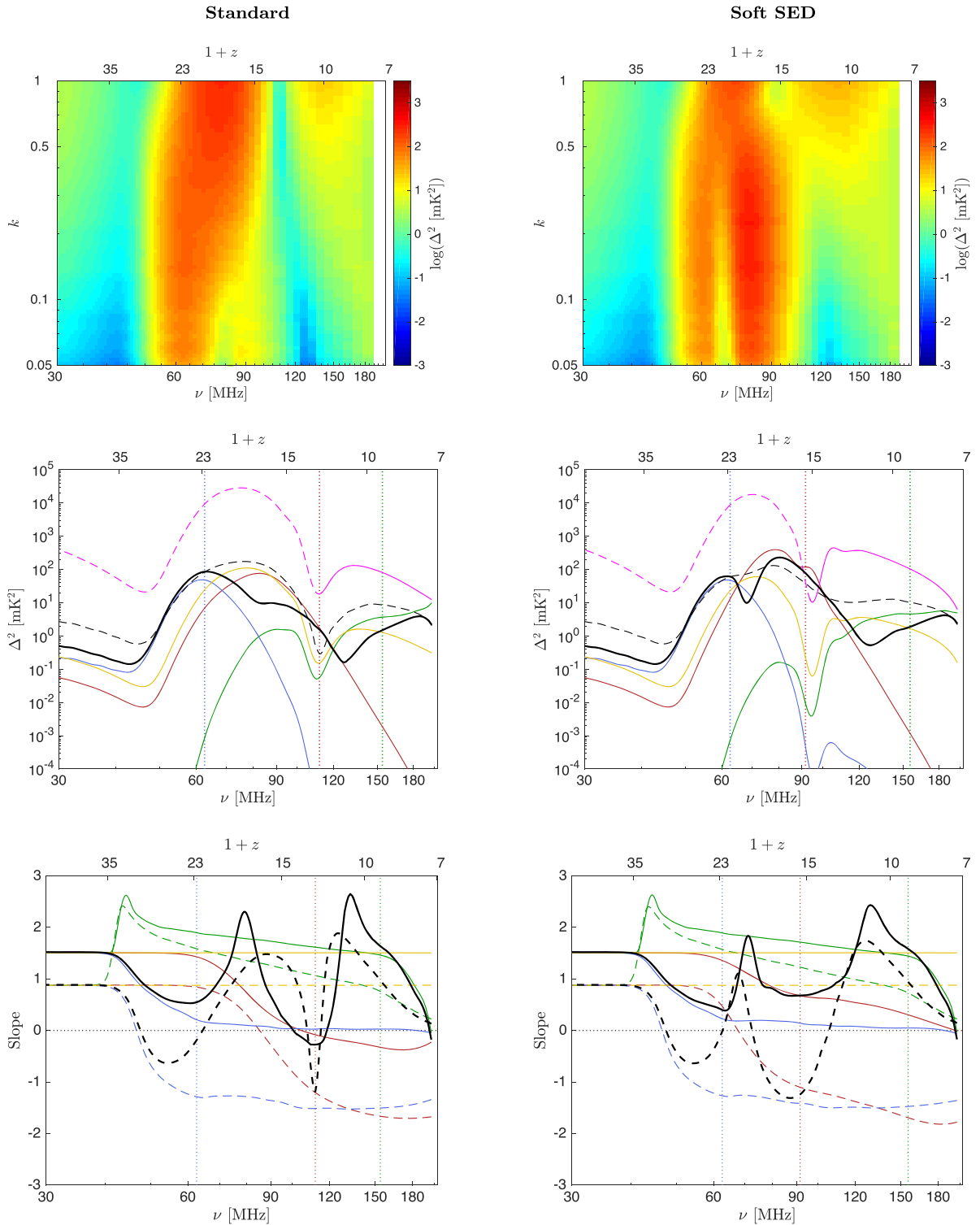


Figure 1. 21-cm power spectra for the model #53 (our standard case, left column) and model #55 (right column). **Top panels:** Two-dimensional map of the power spectra as a function of both wavenumber (vertical axis) and frequency/redshift (lower/upper horizontal axis). Colours correspond to $\log(\Delta^2)$ as indicated on the colour bar. **Middle panels:** Evolution of the total power spectrum at a fixed wavenumber is shown for $k = 0.1 \text{ Mpc}^{-1}$ (solid black) and $k = 0.5 \text{ Mpc}^{-1}$ (dashed black) as a function of frequency/redshift (lower/upper horizontal axis). For $k = 0.1 \text{ Mpc}^{-1}$ we also show the separate power spectra of various components: Ly α (blue), density plus velocity ($\delta + v$; yellow), temperature/heating (dark red), and ionization (green); these have all been expressed like Δ^2 (equation 4), in mK^2 units. For comparison, the global 21-cm signal, T_b^2 , is also shown (magenta), as dashed when the signal is negative and solid when it is positive. Vertical lines mark several important milestones, namely Ly α coupling (blue), the cosmic heating transition (dark red), and the midpoint of reionization (green). **Bottom panels:** Slopes at large scales (between $k = 0.05$ and 0.2 Mpc^{-1} , solid) and small scales (between $k = 0.2$ and 0.6 Mpc^{-1} , dashed) are shown as a function of frequency/redshift (lower/upper horizontal axis). We show B_{tot} (black), B_δ (yellow), B_{coup} (blue), B_{heat} (red), and B_{ion} (green).

fluctuations are significant and nearly eliminate this minimum). This naturally tends to produce two redshift peaks in the 21-cm power spectrum as well (at a given k), although extra astrophysics (such as a rise and fall of various sources of fluctuations) can move the peaks or create additional ones.

It is interesting to examine in detail what is the leading source of fluctuations at every epoch. To explore this aspect we directly extract from our simulation and separately show on the same plot (middle panels of Fig. 1) power spectra (normalized as in equation 4) of each of the terms $\delta + v$, δ_{coup} , δ_{heat} , and δ_{ion} . The total power spectrum is then a sum of individual contributions of power spectra from each type of fluctuations plus cross-correlations among the various sources. Note that unlike the power spectra of each component (which are positive by definition), the cross-correlation components of the power spectrum can be negative. In particular (Fialkov & Barkana 2014), density fluctuations correlate positively with Ly α fluctuations and anticorrelate with ionization fluctuations; density fluctuations anticorrelate with heating fluctuations when the gas is colder than the CMB, and correlate positively with heating fluctuations when the gas is hotter than the CMB. In the plots we only show the power spectra of each of the sources of fluctuations separately. This allows us to see which fluctuation source dominates at each redshift. For the specific choice of astrophysical parameters shown, the coupling term (blue curve) dominates at high redshifts, around the Ly α coupling transition [defined as the redshift at which $x_{\text{tot}} = 1$; vertical blue dotted line. Note that our plots also include the dark ages ($z > 30$) but we do not focus on them here]. This contribution starts to fade when Ly α coupling saturates ($x_{\text{tot}} \gg 1$). Next, the build-up of the X-ray radiation background leads to a rise in fluctuations in the $1 - T_{\text{CMB}}/T_{\text{gas}}$ term (dark red curve). All contributions except for heating experience a minimum around the cosmic heating transition (defined as the redshift at which the mean IGM temperature equals the CMB temperature; vertical dark red dotted line. Note that this can be offset by a $\Delta z \sim 0.5$ compared to the redshift at which the mean $T_b = 0$). Heating fluctuations disappear once the IGM temperature is well above the CMB temperature. Finally, the ionization fluctuations dominate (solid green line) around the midpoint of reionization (defined as when the cosmic mean mass-weighted $x = 0.5$; vertical green line).

However, this is not the full story. The contribution of density (plus velocity) fluctuations, which is often considered to be sub-dominant relative to the radiative contributions at relatively large scales, is significant throughout cosmic history from the dark ages to the end of reionization (Lidz et al. 2007; Pritchard & Furlanetto 2007). As is evident from the plots, at some moments in cosmic history, particularly when a dominant radiative contribution fades away, density fluctuations can dominate the total power of the 21-cm signal. This usually occurs in-between peaks, but as we go towards smaller scales (including $k = 0.5 \text{ Mpc}^{-1}$), it becomes more common for density fluctuations to be the dominant factor at a peak of the power spectrum.

It is easy to understand the redshift evolution of the density term. Because the density power spectrum evolves slowly with redshift in the linear regime, $P_\delta \propto (1+z)^{-2}$, the redshift evolution of the density (plus velocity) contribution ($\Delta_\delta^2 \propto T_b^2 \times P_\delta$, yellow curve) is largely driven by T_b^2 (shown with a magenta line on the plot, for comparison). Note that the difference between T_b^2 and the density contribution decreases at low redshifts because of the growth of the density contrast.

Since the power spectrum is a function of two variables (k and z), we next consider the shape of the power spectrum (see Fig. 2). Specifically, the spectral index of the power spectrum is commonly

defined as $\beta \equiv \frac{d \ln \Delta^2}{d \ln k}$. Naturally, if the spectral index is positive, fluctuations have more power on smaller scales (larger k) and if it is negative, there is more power on larger scales (smaller k). If the spectrum is a pure power law, it has a shape $\Delta^2 \propto k^\beta$ with constant β . In the 21-cm case, there are several sources of fluctuations that drive the signal ($\delta + v$, δ_{coup} , δ_{heat} , and δ_{ion}), each having its own spectral index that can be either positive or negative. In particular, in the hierarchical picture of structure formation density, fluctuations have more power on small scales and, therefore, $\beta_\delta > 0$. The coupling term has a more complex temporal evolution. During the dark ages δ_{coup} is dominated by the collisional term which follows δ on all scales and thus we expect a positive spectral index $\beta_{\text{coup}} = \beta_\delta$. However, as soon as Ly α coupling becomes dominant, β_{coup} should drop (and may even become negative) on scales below the mean free path (which is of order tens of comoving Mpc for Ly α photons). This is since fluctuations are washed out on such scales. However, on scales much larger than the mean free path, fluctuations continue to mostly follow the density and maintain a positive spectral index. Realistically, the transition between large and small (or negative) spectral indexes happens smoothly versus redshift. Similarly, heating fluctuations are first driven by the density and have $\beta_{\text{heat}} = \beta_\delta$, while at later times (once X-ray heating dominates) the power spectrum of δ_{heat} flattens. Finally, in the inside-out picture of reionization (Barkana & Loeb 2004), fluctuations in the ionizing field are roughly a convolution of the density field with a bubble of a typical size at each redshift. We expect the spectral index to be close to β_δ on scales larger than the average size of an ionized bubble (which grows with time), and to drop on smaller scales. The total power spectrum is a combination of the four terms and is driven by one or sometimes a few terms at a time. Therefore, its spectral index evolves with redshift and is scale-dependent, as can be seen in Fig. 2 where the power spectrum of our standard case (which has a hard SED) is shown as a function of k at several redshifts.

Rather than using the scale-dependent spectral index, we define a simpler measure that captures the essence of the k dependence, namely, the average slope of the power spectrum between two scales (still in log-log):

$$B = \frac{\ln \Delta^2(k_2) - \ln \Delta^2(k_1)}{\ln k_2 - \ln k_1}. \quad (5)$$

In Fig. 1 bottom panels we show the evolution of the slope with redshift, both in the small-scale regime (calculated between $k_1 = 0.2 \text{ Mpc}^{-1}$ and $k_2 = 0.6 \text{ Mpc}^{-1}$, corresponding to ~ 10 – 30 comoving Mpc) and in the large-scale regime (calculated between $k_1 = 0.05 \text{ Mpc}^{-1}$ and $k_2 = 0.2 \text{ Mpc}^{-1}$, corresponding to ~ 30 – 125 comoving Mpc). In addition to the slope of the total power spectrum, B_{tot} , we show the slopes for each of the four sources of fluctuations, B_δ , B_{coup} , B_{heat} , and B_{ion} .

The overall evolution of the spectral slope, as outlined above, can be seen in detail in Fig. 1 bottom panels. First of all, B_δ is positive and constant with redshift (because in the linear regime within Λ cold dark matter cosmology, the growth of density fluctuations is scale-independent); $B_\delta \sim 3$ where the matter power spectrum turns over (i.e. at $k_{\text{eq}} \sim 0.06 \text{ Mpc}^{-1}$), and decreases with k . Both B_{coup} and B_{heat} start out equal to B_δ , while at later times (when they become dominated by astrophysical radiation) they drop to zero or below (on scales below the effective horizon of the radiation). The evolution of B_{ion} is interesting, as it has a particularly high peak value at very high redshifts. This is because the non-linear amplification (i.e. the fact that the ionization fraction is either 0 or

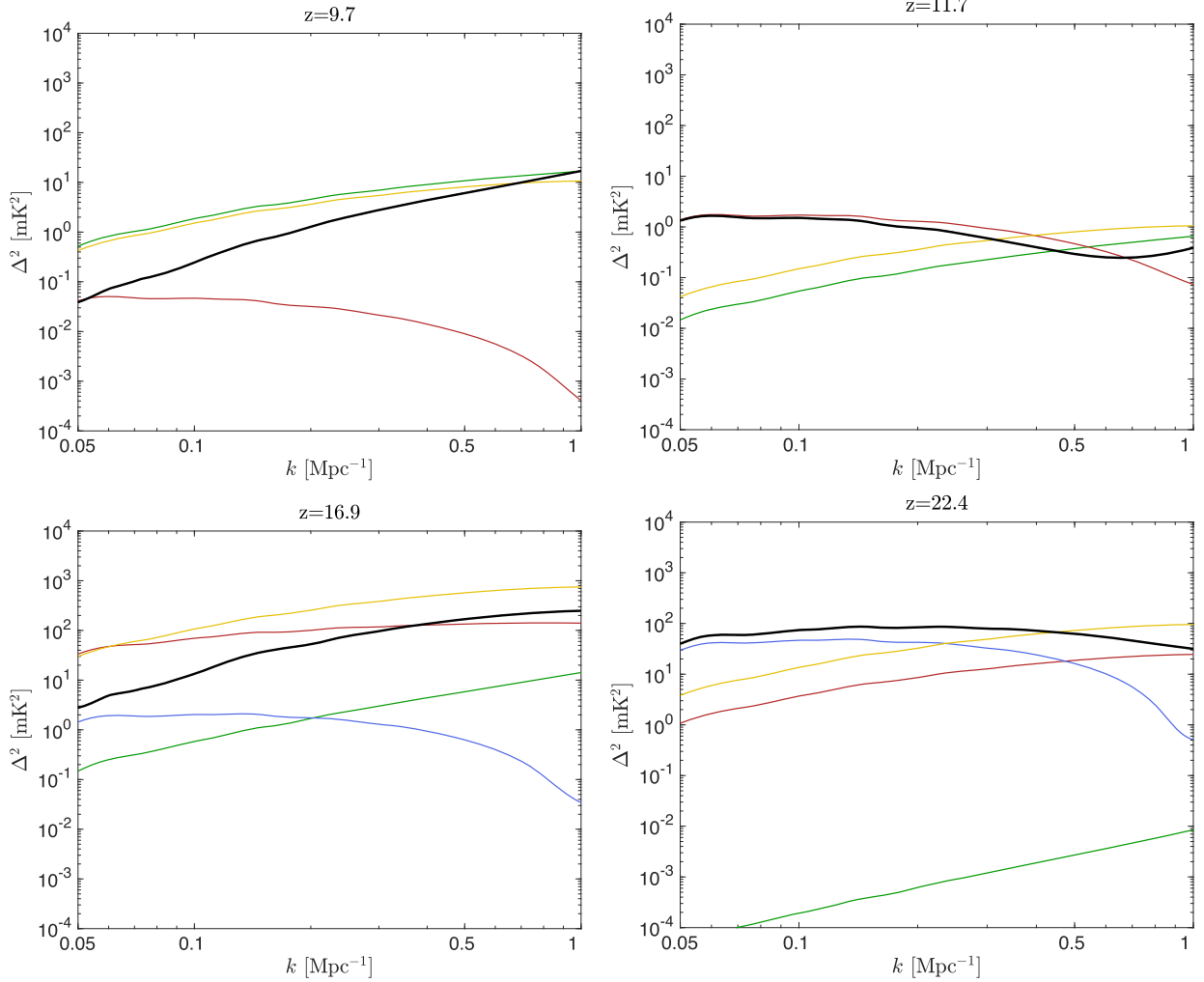


Figure 2. The 21-cm power spectrum (black) in our standard case as a function of k at redshifts $z=9.7$, 11.7 , 16.9 , and 22.4 (see panel titles) corresponding to the extrema of the large-scale slope as seen in Fig. 1 bottom panels. Also shown are the power spectra of the components $\delta + v$ (yellow), δ_α (blue), δ_{heat} (dark red), and δ_{ion} (green). At $z=9.7$ and 16.9 the total power spectrum shows a near-cancellation of different components with opposite signs.

1) increases the power on small scales, in particular causing large Poisson fluctuations initially (Barkana 2008), for which we would expect a slope around 3; this, though, mostly occurs long before there is enough reionization to significantly affect the total 21-cm power spectrum. At lower redshifts, the ionized bubbles grow and wash out small-scale fluctuations in the ionization.

The slope of the total 21-cm power spectrum is driven by one or several components at a time and its evolution can be easily understood (as we illustrate with the large-scale slope of our standard case):

(i) During the cosmic dark ages, all fluctuations are driven by the density, and so $B_{\text{tot}} = B_\delta$. When the first significant population of stars creates an Ly α background, the power spectrum flattens and its slope decreases as B_{tot} follows B_{coup} . In fact, B_{tot} of the large-scale slope has a minimum just when the contribution of Ly α to the power spectrum, shown in Fig. 1, is maximal ($z = 22.4$ in the standard case).

(ii) Then, when x_α approaches saturation, the contribution of Ly α fluctuations becomes negligible compared to density fluctuations. As a result, the total power spectrum steepens again and the slope increases. B_{tot} peaks when δ_{heat} is comparable to

$\delta + v$, causing cancellation on large scales, but not on small scales (where the heating power spectrum is flatter); see Fig. 2 at $z = 16.9$.

(iii) At the heating transition ($z = 11.7$), heating fluctuations dominate on large scales (Fig. 2); therefore, B_{tot} reaches a minimum as it tracks B_{heat} . After the heating transition is completed and the IGM becomes much hotter than the CMB, the impact of heating on the 21-cm signal gradually declines. As a result, for a short time, the density fluctuations become the main source of the 21-cm power again. At the same time, ionizing fluctuations become increasingly important and eventually win, surpassing the contribution of density at $z = 10.8$.

(iv) The slope peaks at $z = 9.7$ when ionization fluctuations become large enough to cancel out the sum of density (plus velocity) and heating fluctuations, with heating being significant only on very large scales and thus the small-scale fluctuations do not cancel out (Fig. 2). After that, ionization fluctuations dominate the 21-cm fluctuations. Around the midpoint of reionization (vertical green line), there is an inflection point in B_{tot} , as the main source of fluctuations changes from ionized bubbles within a neutral IGM to remaining neutral regions within a mostly ionized IGM. B_{tot} tracks B_{ion} during the later stages of reionization.

The general behaviour of the small-scale slope (dashed black line) is similar to that of the large-scale slope. However, the numerical value of this slope is generally lower because the density power spectrum has a lower slope on small scales. Also, both Ly α and X-rays are types of long-range radiation and have lower slopes on small scales than the density. As a result, the two minima of the slope are significantly lower (-0.63 and -1.19 for small scales compared to 0.52 and -0.27 for the large scales). The general behaviour of the slope presented here is consistent with previous studies (Lidz et al. 2008; Mesinger et al. 2013).

To illustrate the effect of different astrophysical parameters on the shape of the power spectrum and its slope we show more examples in Appendix B (Figs B1, B2, and B3) in which we vary f_* , f_X , and V_c from their values in our standard case. Given the existing uncertainty in the parameters, the evolution of the power spectrum and its slope vary quite a lot among plausible parameter sets, and the change induced by varying one parameter is not a small variation around the standard case. Depending on the parameter set, there are differences in both the location and amplitude of features in the power spectrum and its slope. Moreover, as we see from the plots, the dominant sources of fluctuations at various moments in cosmic history can change, altering the history of the power spectrum and changing the number of peaks.

4 THE ENTIRE PARAMETER SPACE

Having considered a few specific cases in the previous section, we now address the full set of models introduced in Section 2.2. In Cohen et al. (2017) we used these models to analyse the features of the global 21-cm spectrum (left-hand panel of Fig. 3). The shape of this signal is universal and has three main features: (i) a high-redshift maximum at redshift $z_{g,\max}^{\text{hi}}$ marks the onset of significant stellar radiation, (ii) a minimum (i.e. absorption trough) located at $z_{g,\min}$ is the beginning of the X-ray heating era, and (iii) a high-redshift maximum (emission peak) at $z_{g,\max}^{\text{lo}}$ occurs when heating saturates. The latter feature appears only when X-ray heating is strong enough to heat the IGM above the temperature of the CMB, while in the cases with weak heating the emission feature does not appear and the gas is seen in absorption throughout the entire cosmic history. Here we use the same set of models to first analyse the shapes versus redshift of the power spectrum and its slope, and then relate the features to the astrophysical parameters that we vary. We summarize in Table 1 our notation for the various features of the global 21-cm signal, the power spectrum, and its slope.

4.1 Shapes

To demonstrate the span of possibilities that could be realized in nature, we begin by placing all the power spectra on the same plot (right-hand panel of Fig. 3). On every curve we mark the cosmic milestones: the redshift at which Ly α coupling saturates (red dot), the moment of the heating transition (green dot), and the midpoint of reionization (blue dot). The large scatter in the location of these markers and the large variety of shapes express our ignorance about the high-redshift astrophysical parameters. The markers of the midpoint of reionization fill a relatively small range because this transition is the most constrained, being pinned down by the *Planck* measurements. On the other hand, the timing of the Ly α transition as well as the heating transition are very unconstrained and show large scatter. The former event depends on the cooling channel and the efficiency with which the first stars were formed, while the latter depends on both the properties of the first stars and

of the first heating sources (which may be two significantly different populations). Note that in some cases the gas temperature does not reach the CMB temperature even at the end of reionization, due to very inefficient heating or no heating at all.

Our approach to classifying different cases is by using the properties of the peaks (which are easiest to observe), with each maximum being tagged according to the dominant source of fluctuations. The unconstrained astrophysical parameters introduce at least an order of magnitude uncertainty in the maximal power produced by each type of source. Fig. 4 shows the maxima for all the cases at $k = 0.1 \text{ Mpc}^{-1}$ (left) and $k = 0.5 \text{ Mpc}^{-1}$ (right), demonstrating the scatter in peaks dominated by density (yellow), Ly α (blue), heating (red), and ionization (green). Within the uncertainty introduced by the astrophysical parameters, the peak power is typically higher by 1–2 orders of magnitude at high redshifts compared to the low-redshift ionization peak. This is an important conclusion demonstrating that the high-redshift signal might be as accessible as its low-redshift counterpart with an SKA-like instrument. On large scales ($k = 0.1 \text{ Mpc}^{-1}$) and prior to reionization the peak power for all the models varies in the range $5 \text{ mK}^2 \lesssim \Delta^2 \lesssim 500 \text{ mK}^2$ and drops as soon as reionization progresses (except for the cases when reionization is cold). On smaller scales the typical peak power prior to reionization is slightly higher and is in the range $10 \text{ mK}^2 \lesssim \Delta^2 \lesssim 1000 \text{ mK}^2$. It is interesting to note that, whereas on large scales all sources of fluctuations can contribute a strong peak, on scales smaller than the typical mean free path of the radiation (including $k = 0.5 \text{ Mpc}^{-1}$) density fluctuations play a relatively important role, dominating the high-redshift peak (usually attributed to heating) in a significant fraction of cases. Finally we note that the number of peaks on small scales (1–3, usually 2) is typically smaller than on large scales (2–3, usually 3).

As expected, the large uncertainty in the power spectrum leads to a large uncertainty in its slope (top panels of Fig. 5). It turns out that, unlike in the case of the power spectra where the number of peaks varies for different sets of parameters, in the vast majority of cases the slopes exhibit a universal shape having two maxima and two minima (as was shown for the standard case). This rule breaks down only in cases of very inefficient heating where there is no heating transition before the end of reionization, resulting in only one maximum and one minimum (e.g. left-hand panel of Fig. B3). Another exception are the cases with supermassive haloes, which show a small extra peak (bump) in the large-scale slope before the high-redshift minimum (e.g. right-hand panel of Fig. B3). The explanation of this bump is as follows. When the radiative sources first turn on (and significantly produce mainly Ly α), there is a first stage where they only reach relatively short distances (due to time retardation: at the retarded time corresponding to a large distance, there were far fewer sources in existence). Thus, at this stage the radiation amplifies small-scale fluctuations, and the power-spectrum slope rises. After a short time, the radiation reaches large scales and begins to smooth over the small scales, and the power-spectrum slope falls. What determines if this bump is seen in the total power-spectrum slope is whether, during this short initial period, the radiation already has a significant effect on the 21-cm signal. In most models, the Ly α flux turns on (and goes through this initial period) very early (at $z > 30$), when collisional coupling is still significant, so that the Ly α coupling at this time is negligible. However, in models with very massive haloes, the Ly α turn-on occurs so late (at $z < 25$) that collisional coupling is negligible, and even the earliest Ly α coupling immediately dominates the 21-cm emission. Note, though, that since the bump is only seen when the coupling is very weak, the overall height of the power

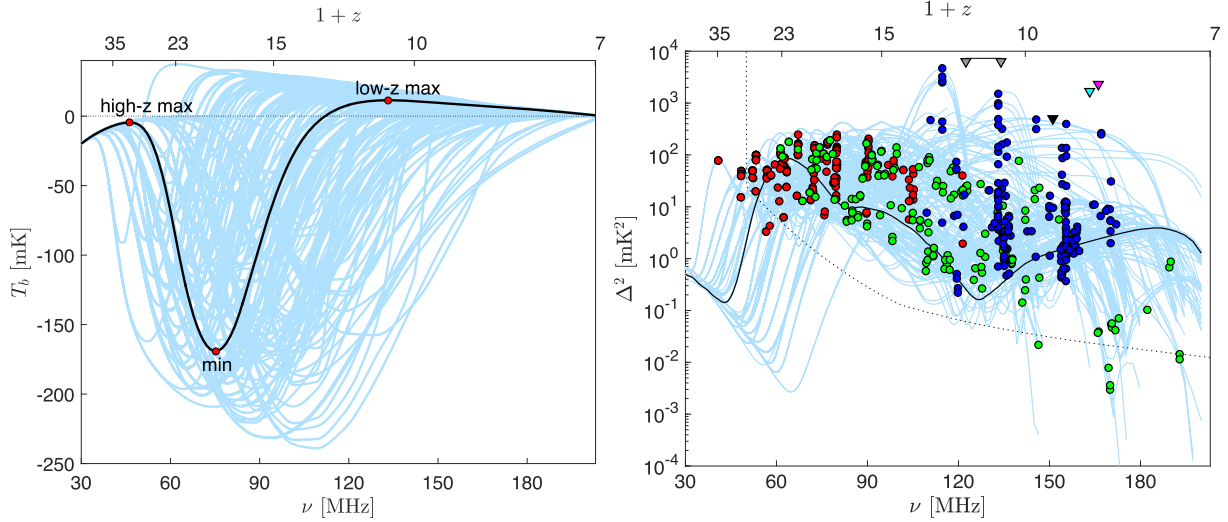


Figure 3. **Left:** Parameter study of the global signal adopted from Cohen et al. (2017). We show the 21-cm global signal as a function of redshift for our standard case (black line), with red points marking the three turning points (from left to right: the high- z maximum, the minimum, and the low- z maximum). Light-blue lines show the entire set of realizations of the 21-cm signal for the 193 different astrophysical models discussed in this paper. **Right:** The corresponding complete set of realizations of the power spectrum at $k = 0.1 \text{ Mpc}^{-1}$ (light-blue curves) as a function of observed frequency/redshift (bottom/top axis). The standard case is shown with a black line. For each model, we mark the redshift of the Ly α coupling (red dot), the moment of the heating transition (green dot), and the midpoint of reionization (blue dot). Triangles mark various upper limits measured on various scales: black at $k = 0.1\text{--}0.33 \text{ Mpc}^{-1}$ (Ali et al. 2015), cyan at $k = 0.18 \text{ Mpc}^{-1}$ (Parsons et al. 2014), magenta at $k = 0.13 \text{ Mpc}^{-1}$ (Jacobs et al. 2015), and grey at $k = 0.04 \text{ Mpc}^{-1}$ (Patil et al. 2017). The black dotted line shows the power spectrum of the thermal noise for the SKA1 assuming a single beam, integration time of 1000 h, 10 MHz bandwidth, and bins $\Delta k = k$.

Table 1. Summary of features and notations that we use to categorize the global signal, the power spectrum, and its slope. Note that the slope also sometimes has an extra small bump at very high redshift (right-hand panel of Fig. B3).

	Structure	Notations	Figure
Global signal	2 maxima and 1 minimum point	$z_{g,\text{max}}^{\text{hi}}, z_{g,\text{min}}, z_{g,\text{max}}^{\text{lo}}$	Fig. 3 (left-hand panel)
Power spectrum	Between 2 and 4 peaks	$z_{\text{PS,coup}}, z_{\text{PS,density}}, z_{\text{PS,heat}}, z_{\text{PS,ion}}$, each peak classified by its dominant component	Figs 1 (top and middle panels) and 4
Power spectrum slope	2 minima and 2 maxima or 1 maximum and 1 minimum	$z_{\text{dPS,min}}^{\text{hi}}, z_{\text{dPS,max}}^{\text{hi}}, z_{\text{dPS,min}}^{\text{lo}}, z_{\text{dPS,max}}^{\text{lo}}$ or $z_{\text{dPS,min}}^{\text{hi}}$, $z_{\text{dPS,max}}^{\text{lo}}$	Figs 1 (bottom panels) and 5

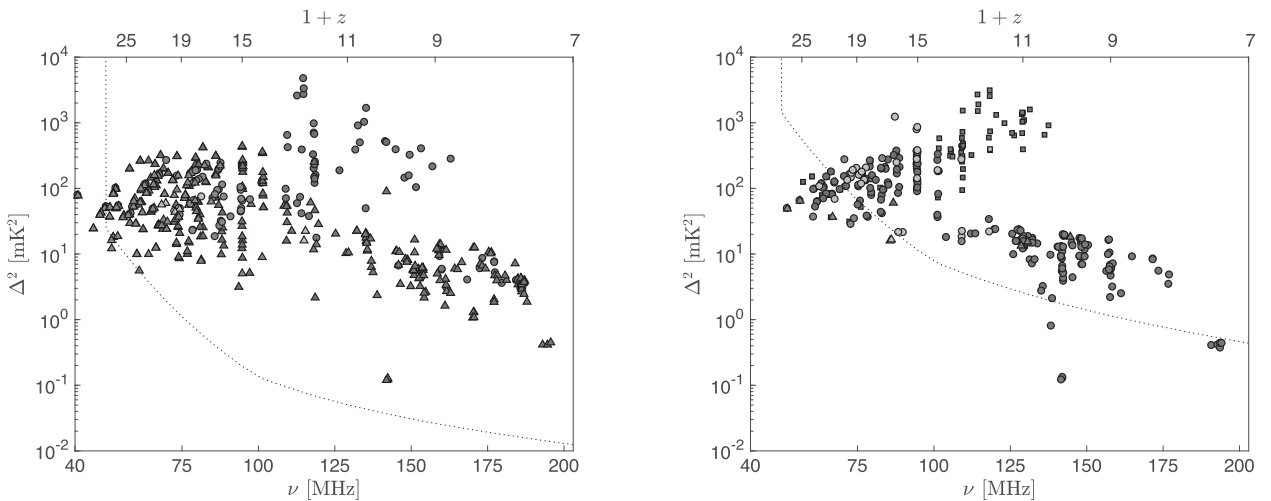


Figure 4. The power spectrum at $k = 0.1 \text{ Mpc}^{-1}$ (left) and $k = 0.5 \text{ Mpc}^{-1}$ (right) as a function of observed frequency/redshift (bottom/top axis) at various peaks. Marker colours indicate the dominant source of fluctuations for each peak: density (yellow), Ly α (blue), heating (red), and ionization (green). Marker shapes indicate whether the corresponding case has a total (over all redshifts) of 1 (squares), 2 (circles), or 3 (triangles) peaks at that scale. (Note that there are no squares in the left-hand panel.) The black dotted line shows the power spectrum of the thermal noise for the SKA1 assuming a single beam, integration time of 1000 h, 10 MHz bandwidth, and bins $\Delta k = k$.

spectrum at this point is very low ($<10^{-2}$ mK²) and thus very hard to observe.

In total, (i) 159 out of 202 cases have four extrema in the slope, including both high- and low-redshift maxima and minima, and (ii) the rest of the cases have two extrema: a high-redshift minimum and low-redshift maximum. In both type (i) and (ii) cases, a bump can additionally appear depending on M_{\min} . Although the exact position of each feature might vary, the overall shape with redshift of the slope is uniform (apart from the low-heating cases) and allows us to correlate each of its features with specific cosmic events, as we discuss in the next subsection. The bottom panels of Fig. 5 show the distribution of the extrema of the slopes. It is interesting to note that on the scatter plots there is little overlap in the redshift–slope plane between the areas populated by the various extrema, unlike in the case of the power spectra at fixed k where there is more overlap (Fig. 4). This property should make it easier to correctly classify each feature in a slope versus redshift plot made from future observed data. The error of the slope is expected to be larger by roughly $\sqrt{2}$ compared to the power spectrum error. Thus, we can roughly say that the slope is measurable if the power spectrum at the two relevant k values is above the sensitivity limit. From the right-hand panel of Fig. 3 it can be seen that most of the models are above the sensitivity limit at most of the redshift range for $k = 0.1 \text{ Mpc}^{-1}$, hence the large-scale slope is mostly measurable. However, for smaller scales the sensitivity is worse (see Fig. 4) and so the small-scale slope is not measurable for many of our models.

To summarize (see also Table 1), the classification of the power spectra and the slopes is more difficult than that of the global 21-cm spectra because of the diversity of features and shapes. In the case of the power spectrum we use peaks to classify each case and label the peaks according to the leading source of fluctuations ($z_{\text{PS,density}}$, $z_{\text{PS,coup}}$, $z_{\text{PS,heat}}$, $z_{\text{PS,ion}}$); while for the slope we refer to the high and low minima and maxima ($z_{\text{dPS,min}}^{\text{hi}}$, $z_{\text{dPS,max}}^{\text{hi}}$, $z_{\text{dPS,min}}^{\text{lo}}$, $z_{\text{dPS,max}}^{\text{lo}}$). Although we do show cases with $\tau > 0.09$, we exclude them from all the quantitative results in the paper as those are more than 3σ away from the optical depth measured by the *Planck* satellite.

4.2 Extracting astrophysical properties

As we discussed in Section 3, features of both the power spectrum and its slope are closely related to the physical properties of the early universe, as are features of the global 21-cm spectrum. Cohen et al. (2017) related each of the observable features of the global signal to the mean astrophysical properties (see also Mirocha, Harker & Burns 2013, 2015; Harker et al. 2016). In particular, the location of the high-redshift maximum is closely related to V_c and f_* and can be translated to the mean intensity of the Ly α background at that redshift (fig. 3 of Cohen et al. 2017); the depth of the absorption trough is set by V_c , f_* , f_X , and the X-ray SED, and correlates with the ratio of the Ly α intensity to the X-ray heating rate at the redshift of the minimum (fig. 6 of Cohen et al. 2017); while the emission peak is driven by V_c , f_* , f_X , the X-ray SED and τ , and can constrain the mean heating rate over the mean ionizing efficiency (fig. 8 of Cohen et al. 2017). Here we use the same set of models to establish universal relationships between the features of the power spectrum (and its slope) and the astrophysical parameters.

We start by analysing the high-redshift domain where the 21-cm signal is largely driven by the Ly α background. We find that for most of the considered cases, on large scales, the Ly α background dominates the highest redshift peak of the power spectrum. In general, increasing the typical mass of haloes that dominate star formation

lowers the mean Ly α intensity at the redshift of the peak, and raises the power spectrum (since massive haloes are more strongly biased). However, there is a lot of overlap in the ranges (see Fig. 6), so that a given observed $\Delta_{\text{PS,coup}}^2$ cannot be used to deduce the value of J_α without knowing the minimum mass of star-forming haloes. The minimum cooling mass can be estimated separately, e.g. from measuring the high-redshift maximum of the global signal (Cohen et al. 2017).

The dependence of the slope on redshift has a more robust shape than that of the power spectrum. Therefore, it is simpler to analyse and classify its features. By analysing the high-redshift minimum of the slope, $z_{\text{dPS,min}}^{\text{hi}}$, we find that the mean Ly α intensity at that redshift can be estimated (right-hand panel of Fig. 6). The intensity can be fitted by a simple relation:

$$\log_{10}(J_\alpha) = a(1 + z_{\text{dPS,min}}^{\text{hi}}) + b, \quad (6)$$

where $[a, b] = [0.071, -23]$. As is evident from the plot, there is a correlation between a model’s position in the $z_{\text{dPS,min}}^{\text{hi}} - J_\alpha$ plane and the minimum mass of star-forming haloes.

We find a cleaner correlation (Fig. 7) between the redshift of Ly α coupling (i.e. $x_\alpha = 1$ when averaged over the simulated volume) and $z_{\text{dPS,min}}^{\text{hi}}$:

$$1 + z_{\text{Ly}\alpha} = a(1 + z_{\text{dPS,min}}^{\text{hi}}) + b, \quad (7)$$

where $[a, b] = [1.09, -5.79]$. We find that in all the models, the Ly α coupling transition happens slightly later than the minimum in the slope (here shown on small scales, where the correlation is clearer). These correlations, shaped by the Ly α background properties, occur since at high redshifts (before heating takes place) the signal is determined by only two parameters (f_* and V_c).

Cosmic heating can be an extended process starting soon after the first population of luminous sources is formed and extending throughout the first half of reionization. X-rays emitted by the first sources inject their energy into the IGM, driving its temperature up and above that of the CMB. Therefore, properties of the first heating sources are directly related to the thermal evolution of the IGM, which affects the 21-cm signal and its fluctuations. The left-hand panel of Fig. 8 shows how the redshift of the peak heating fluctuations correlates with the mean temperature of the neutral gas in the simulated volume. In other words, with some scatter, the mean gas temperature at high redshifts can be estimated from the position of the heating peak in the 21-cm power spectrum, with the linear fit:

$$T_{\text{gas}} = a(1 + z_{\text{PS,heat}}) + b, \quad (8)$$

where $[a, b] = [1.97, -17.1]$.

The effect of heating fluctuations on the 21-cm signal is most significant around the heating transition ($T_{\text{CMB}} = T_{\text{gas}}$) when the other fluctuations vanish. As heating becomes stronger it spatially smooths the signal on small scales, decreasing the slope. Therefore we expect the redshift of the heating transition to correlate with the low-redshift minimum of the slope. Indeed, there is almost a one-to-one correspondence with little scatter, as can be seen in the right-hand panel of Fig. 8. The fitting formula is

$$(1 + z_{\text{HT}}) = a(1 + z_{\text{dPS,min}}^{\text{lo}}) + b, \quad (9)$$

where $[a, b] = [0.93, 0.70]$. In other words, the low-redshift minimum point is an excellent tracer of the redshift of the heating transition, and can be used to establish the moment at which the IGM was heated to the temperature of the CMB, which of course is known and equals $2.725 \times (1 + z)$ K.

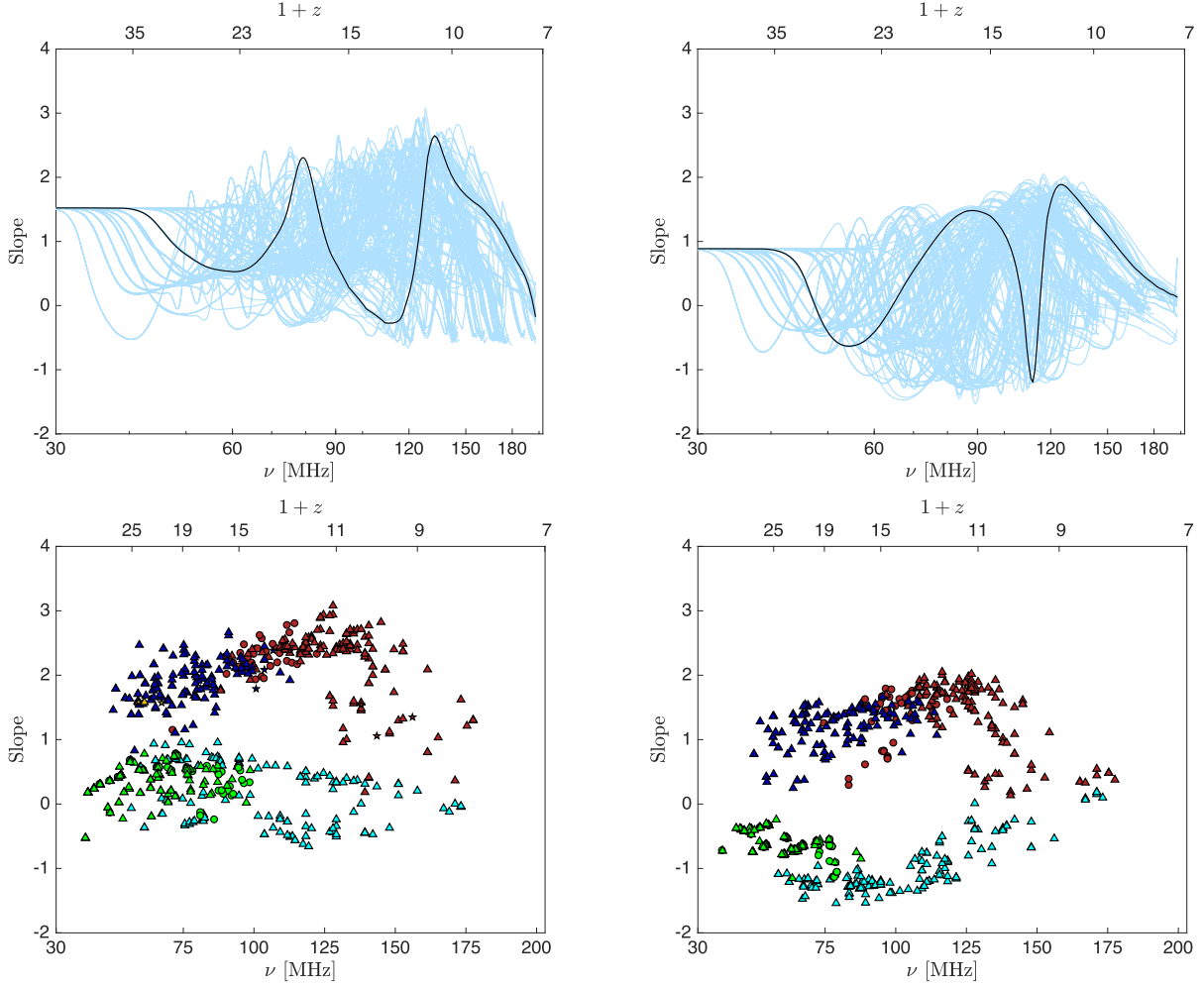


Figure 5. **Top:** The slope of the 21-cm power spectrum on large ($k=0.05\text{--}0.2\text{Mpc}^{-1}$, left) and small ($k=0.2\text{--}0.6\text{Mpc}^{-1}$, right) scales as a function of observed frequency/redshift (bottom/top axis) for all the cases discussed in this paper (light blue). The standard case is shown as a black line. The full list of models appears in Appendix A. **Bottom:** The extrema of the slope for large ($k=0.05\text{--}0.2\text{Mpc}^{-1}$; left-hand panel) and small ($k=0.2\text{--}0.6\text{Mpc}^{-1}$; right-hand panel) scales, presented for all cases. Marker shapes indicate the total number of minima or maxima for each case/model: 1 (circle), 2 (triangle), or 3 (star). Marker colours indicate the type of the point: red (low-redshift maximum), cyan (low-redshift minimum), blue (high-redshift maximum), green (high-redshift minimum), and yellow (extra bump; see the right-hand panel of Fig. B3). Note that there are no stars or yellow points in the panel on the right.

The depth of the low-redshift minimum of the slope depends on how efficiently heating acts to smooth small-scale power in the 21-cm signal. X-ray photons with high energies have a large mean free path, thus contributing to smoother heating, and we expect the slope to be low in the scenarios with hard SEDs. On the other hand, if the majority of produced X-rays are soft, heating fluctuations occur on small scales, producing a higher power-spectrum slope. This trend is indeed seen in the simulations. Fig. 9 shows the distribution of the low-redshift minimum point of the slope, with colours indicating the SED of X-ray sources. Ignoring cases with an unreasonably large τ (marked by crosses), there is the expected clear separation between models with a hard (blue) and soft (red) SED. Models where the X-ray population is mixed and includes both soft sources and MQ yield similar predictions to what we find in the cases with a pure soft SED. This is because MQ become significant only at relatively low redshifts. The prediction is clear: if the slope is negative at the low-redshift minimum point, the heating is due to sources emitting mainly hard X-rays; while if it is positive, the heating is very likely dominated by soft X-rays. Thus, measuring the power spectrum at its low-redshift minimum point will allow us to constrain the

hardness of X-ray photons and shed light on the nature of their sources. This is complementary to the inference of the X-ray slope of the heating sources that is available based on the anisotropy of the 21-cm power spectrum (Fialkov et al. 2015).

For a generic set of parameters, the 21-cm signal during reionization is expected to be strongly affected by both the parameters of heating and the ionizing properties of stars. However, in cases when heating is efficient and saturates early enough, fluctuations in the signal are driven by the bubble structure and density perturbations. As expected, when plotting the neutral fraction at the redshift of the peak versus the peak power during reionization (Fig. 10), we find a one-to-one correspondence for the models where heating is strong. In these models heating is saturated (or almost saturated) during reionization, which results in a relatively low-ionization peak ($\Delta_{\text{PS,ion}}^2 \lesssim 30 \text{ mK}^2$). In these cases the 21-cm signal can be directly used as a tracer of the reionization history and as a tool to reconstruct the optical depth to reionization (Barkana 2009; Fialkov & Loeb 2016; Liu et al. 2016). However, the spectrum does not trace the neutral fraction when heating is weak. In this case the peak is very strong ($\Delta_{\text{PS,ion}}^2 \gtrsim 150 \text{ mK}^2$), because the cosmic gas is much

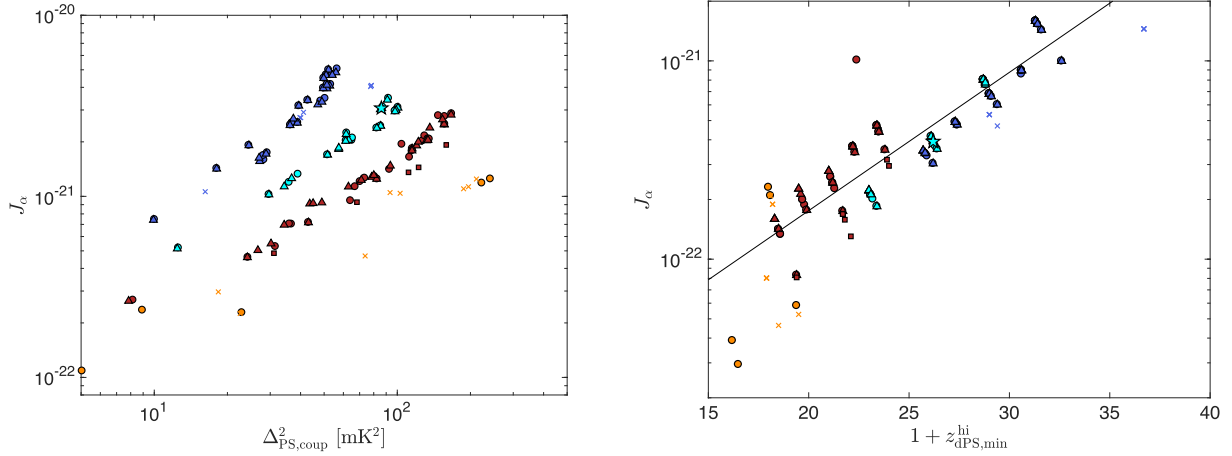


Figure 6. **Left:** The Ly α intensity in units of $\text{erg s}^{-1} \text{cm}^{-2} \text{Hz}^{-1} \text{sr}^{-1}$ as a function of the power spectrum at $k = 0.1 \text{ Mpc}^{-1}$ at the Ly α dominant peak. Marker colours indicate the minimum circular velocity of star-forming haloes for each case: $V_c = 4.2$ (blue), 16.5 (cyan), 35.5 (red), and 76.5 km s^{-1} (orange). Marker shapes indicate the optical depth for each case: $\tau = 0.055$ (squares), 0.060–0.075 (circles), 0.082–0.09 (triangles), 0.09–0.111 (crosses), while the star is our standard case. **Right:** Mean Ly α intensity in units of $\text{erg s}^{-1} \text{cm}^{-2} \text{Hz}^{-1} \text{sr}^{-1}$ as a function of (one plus) the redshift of the high-redshift minimum of the small-scale power-spectrum slope. Markers (both colours and shapes) are as in the left-hand panel. A solid line shows the best fit, equation (6).

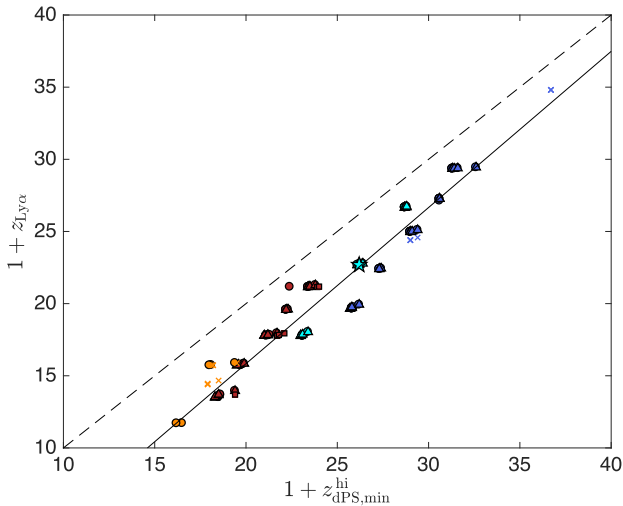


Figure 7. Redshift of the Ly α coupling transition (i.e. $x_\alpha = 1$) as a function of the redshift of the high-redshift minimum of the slope (at $k = 0.2\text{--}0.6 \text{ Mpc}^{-1}$). Marker colours indicate the minimum circular velocity of star-forming haloes for each case: $V_c = 4.2$ (blue), 16.5 (cyan), 35.5 (red), and 76.5 km s^{-1} (orange). Marker shapes indicate the optical depth for each case: $\tau = 0.055$ (squares), 0.060–0.075 (circles), 0.082–0.09 (triangles), and 0.09–0.111 (crosses), while the star is our standard case. We also show the line $Y = X$ (dashed) and the fitting formula from equation (7).

colder than the CMB, and the peak occurs when the universe is still mostly neutral; the peak depends strongly on the thermal history in this case. Fig. 10 shows how an ionization peak with a relatively low amplitude ($\Delta_{\text{PS,ion}}^2 \lesssim 30 \text{ mK}^2$) can be used to estimate the neutral fraction at the redshift $z_{\text{PS,ion}}$. The fitting formula is

$$x_{\text{H1}} = a \log_{10}^2(\Delta_{\text{PS,ion}}^2) + b \log_{10}(\Delta_{\text{PS,ion}}^2) + c, \quad (10)$$

where $[a, b, c] = [0.045, 0.24, 0.24]$. On the other hand, most models with low f_X have high peaks which are uncorrelated with x .

Overall we find that it is difficult to extract useful astrophysical information directly from the features of the power spectrum. In addition, once a peak is detected it might not always be easy to identify its origin, i.e. whether it is driven by fluctuations in density,

coupling, heating, or ionization fraction. Out of our 202 cases, 186 have a peak at $k=0.1$ dominated by ionization fluctuations, and it is always the lowest redshift peak of the power spectrum; the other 16 have a lowest redshift peak dominated by heating (these are the red circles in the left-hand panel of Fig. 4). The same is true at $k = 0.5$ for 161 cases, 34 of which have only one peak, the ionization peak. At $k = 0.1$, 193 cases have a peak dominated by Ly α fluctuations, and it is always the highest redshift peak. At $k = 0.1$, 119 cases have three power spectrum peaks; the highest redshift one is Ly α -dominated, the lowest redshift by ionization, and the intermediate one by heating (except for two cases dominated by $\delta + \nu$). We plan to further explore how to classify the peaks directly from observations, using a larger number of simulated cases. The slope of the power spectrum, though, appears to be a more easily useful tool. It is easier to label its features and identify the nature of cosmic events from its redshift evolution.

5 CONSISTENCY CHECK

Using our bank of models we can look for relations between the features of the power spectra (or the slope) and the features of the global signal (high-redshift maximum, absorption trough, and emission peak). If such relations exist they could be used as consistency checks to verify the results of observations (e.g. comparing the detected global signal and power spectrum and making sure that there are not any large systematic errors). We do indeed find that the two types of signal are correlated. In this section we list a few selected relations using the power spectrum slope, rather than directly the power spectrum height, as our main tracer of fluctuations.

The end of the cosmic dark ages, marked by the high-redshift maximum in the global signal, is correlated with the high-redshift minimum of the slope, with little scatter (top left panel of Fig. 11). This is because both of these redshifts are directly related to the early Ly α sources. The maximum of the global signal occurs when the Ly α background is first significant, while the minimum of the slope occurs somewhat later, near the Ly α transition. We find the following best-fitting relation between the two:

$$1 + z_{\text{g,max}}^{\text{hi}} = a(1 + z_{\text{dPS,min}}^{\text{hi}}) + b, \quad (11)$$

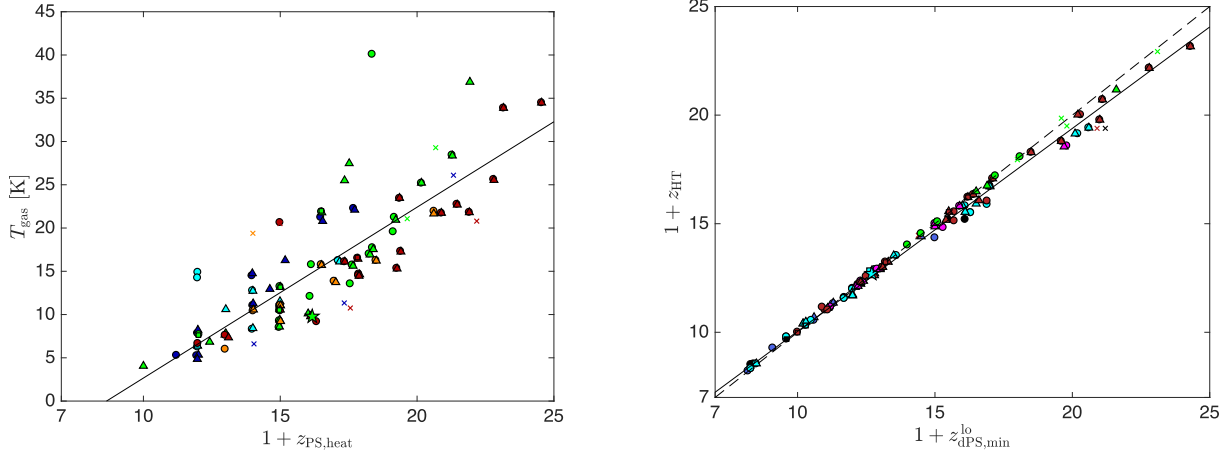


Figure 8. **Left:** Mean gas temperature (at $z_{\text{PS,heat}}$) as a function of $z_{\text{PS,heat}}$ (at $k = 0.1 \text{ Mpc}^{-1}$). The solid line shows the fitting formula of equation (8). Colours indicate the star formation efficiency for each case: $f_* = 0.005$ (blue), 0.016 (cyan), 0.05 (green), 0.16 (orange), and 0.5 (red). Shapes indicate the optical depth for each case: $\tau = 0.055$ (squares), 0.060–0.075 (circles), 0.082–0.09 (triangles), and 0.09–0.111 (crosses). **Right:** Redshift of the heating transition ($T_{\text{CMB}} = T_{\text{gas}}$) as a function of the redshift of the low-redshift minimum of the slope (at $k = 0.2\text{--}0.6 \text{ Mpc}^{-1}$). The colours indicate the star formation efficiency for each case: $f_{\chi} = 0.1$ (black), 0.32 (blue), 1 (cyan), 3.16 (magenta), 8 or 10 (red), and upper limits (green). Shapes indicate the optical depth for each case: $\tau = 0.055$ (squares), 0.060–0.075 (circles), 0.082–0.09 (triangles), and 0.09–0.111 (crosses). Also shown is the $Y = X$ line (dashed) and the fitting formula (solid) of equation (9). Note that this plot only includes models that have a heating transition before the end of reionization; the 39 excluded cases can be observationally recognized since they fall in the $\Delta_{\text{PS,ion}}^2 > 150 \text{ mK}^2$ part of Fig. 10 (except for one that does not have an ionization peak at $k = 0.5 \text{ Mpc}^{-1}$).

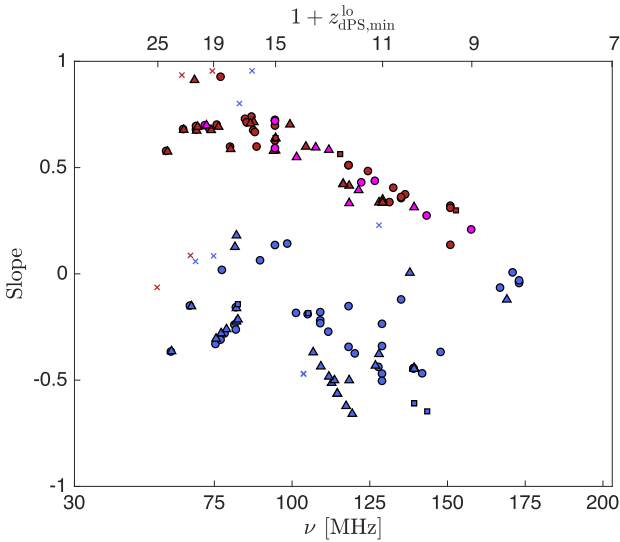


Figure 9. Low-redshift minimum of the large-scale slope (i.e. cyan points from the bottom left panel of Fig. 5), with colours indicating the SED: soft (red), soft and MQ (magenta), and hard (blue; i.e. XRB, MQ, or XRB and MQ). Shapes indicate the optical depth for each case: $\tau = 0.055$ (squares), 0.060–0.075 (circles), 0.082–0.09 (triangles), 0.09–0.111 (crosses).

where $[a, b] = [1.14, 1.83]$. As we discussed in the previous section, the redshift of this transition is also related to the minimum mass of haloes in which stars form. Therefore, measuring either $z_{\text{g,max}}^{\text{hi}}$ or $z_{\text{dPS,min}}^{\text{hi}}$ will yield constraints on the main cooling channel in the early Universe.

The high-redshift maximum of the slope depends on fluctuations in both heating and density. Before the heating transition, these two components have different signs (anti-correlate) and partially cancel each other, and at the maximum point the heating fluctuations are large enough to cancel out $\delta + \nu$ on large scales. We expect this instant to be correlated with the position of the absorption trough of

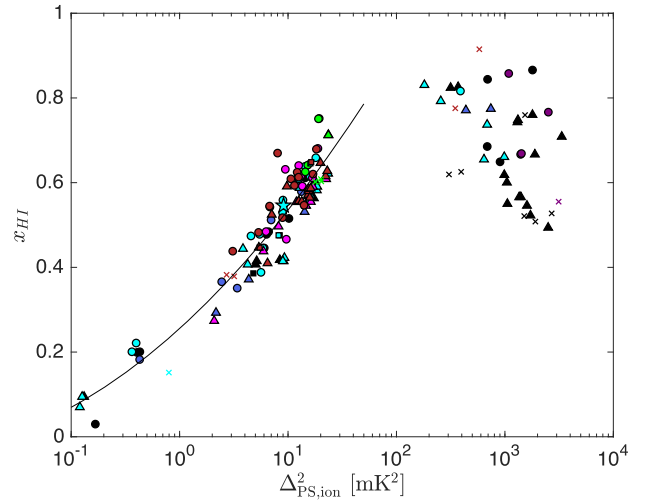


Figure 10. Neutral hydrogen fraction as a function of the power spectrum at $k = 0.5 \text{ Mpc}^{-1}$ at $z_{\text{PS,ion}}$. The colours indicate the heating efficiency for each case: $f_{\chi} = 0.1$ (black), 0.32 (blue), 1 (cyan), 3.16 (magenta), 8 or 10 (red), lower limits (purple), and upper limits (green). Shapes indicate the optical depth for each case: $\tau = 0.055$ (squares), 0.060–0.075 (circles), 0.082–0.09 (triangles), 0.09–0.111 (crosses). Also shown is the fitting formula from equation (10).

the global signal, $z_{\text{g,min}}$, which occurs when heating is strong enough to oppose the adiabatic cooling due to the expanding universe and start to heat the gas up. In fact, as we can see from the top right panel of Fig. 11, the two redshifts, $z_{\text{g,min}}$ and $z_{\text{dPS,max}}^{\text{hi}}$, are nearly equal, with relatively low scatter (especially at high redshifts). In most cases, the minimum point of the global signal occurs first. Our best fit is

$$1 + z_{\text{g,min}} = a(1 + z_{\text{dPS,max}}^{\text{hi}}) + b, \quad (12)$$

where $[a, b] = [0.94, 1.55]$. We also show a relation directly with the amplitude of the power spectrum, namely between $z_{\text{g,min}}$ and the

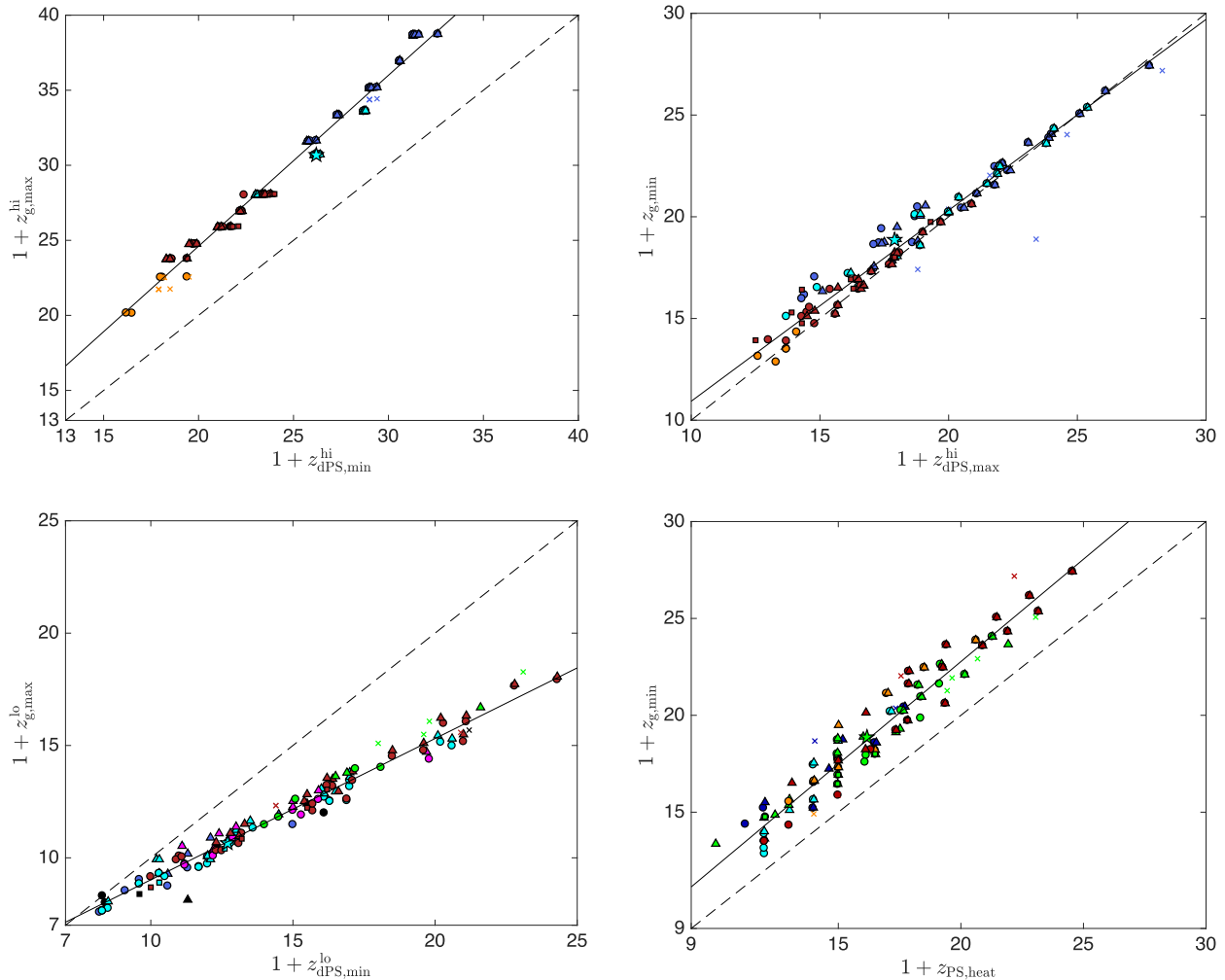


Figure 11. Consistency relations between the features of the global signal and the features of the power spectrum/slope. In addition to the distribution of data points we show the line $Y = X$ (dashed) and a linear fit in each case (solid line). In all panels, marker shapes indicate the optical depth for each case: $\tau = 0.055$ (squares), $0.060\text{--}0.075$ (circles), $0.082\text{--}0.09$ (triangles), and $0.09\text{--}0.111$ (crosses), while the star is our standard case. **Top Left:** The redshift of the high-redshift maximum in the global signal as a function of the high-redshift minimum of the small-scale slope ($k = 0.2\text{--}0.6 \text{ Mpc}^{-1}$). Marker colours indicate the minimum circular velocity of star-forming haloes: $V_c = 4.2$ (blue), 16.5 (cyan), 35.5 (red), and 76.5 km s^{-1} (orange). We also show the fit, equation (11). **Top Right:** $1 + z_{g,\min}$ versus $1 + z_{\text{dPS,max}}^{\text{hi}}$ (calculated at $k = 0.05\text{--}0.2 \text{ Mpc}^{-1}$). Colours and shapes of the markers are as in the left-hand panel. The fitting formula is from equation (12). **Bottom Left:** Redshift of the low-redshift maximum of the global signal as a function of the low-redshift minimum of the slope (at $k = 0.2\text{--}0.6 \text{ Mpc}^{-1}$). Marker colours indicate the star formation efficiency for each case: $f_{\text{X}} = 0.1$ (black), 0.32 (blue), 1 (cyan), 3.16 (magenta), 8 or 10 (red), and upper limits (green). The linear fit is from equation (14). **Bottom Right:** The redshift of the heating peak at $k = 0.1 \text{ Mpc}^{-1}$, $z_{\text{PS,heat}}$, as a function of the redshift of the absorption trough in the global signal, $z_{g,\min}$. Also shown is the linear fit from equation (13).

redshift of a peak dominated by heating fluctuations. The correlation, shown on the bottom right panel of Fig. 11, can be fitted by the following formula:

$$(1 + z_{g,\min}) = a(1 + z_{\text{PS,heat}}) + b, \quad (13)$$

where $[a, b] = [1.06, 1.63]$.

Finally, as we know from our earlier work (fig. 7 of Cohen et al. 2017) both the position and height of the low-redshift maximum of the global signal depend on the average heating rate, as this maximum occurs when heating saturates. Because the redshift of the low-redshift minimum of the slope occurs around the heating transition, we expect $z_{g,\max}^{\text{hi}}$ and $z_{\text{dPS,min}}^{\text{lo}}$ to be correlated, with $z_{\text{dPS,min}}^{\text{lo}}$ somewhat higher. Our models yield the best-fitting relation

$$(1 + z_{g,\max}^{\text{hi}}) = a(1 + z_{\text{dPS,min}}^{\text{lo}}) + b, \quad (14)$$

where $[a, b] = [0.63, 2.73]$, shown in the bottom left panel of Fig. 11.

6 SUMMARY AND DISCUSSION

The power spectrum of the 21-cm signal contains rich information about the early universe; however, it might be challenging to interpret the signal in terms of astrophysical parameters. In this paper we have used 202 different astrophysical scenarios to build relations between the observable features of the power spectra and astrophysical properties at high redshifts. We applied a seminumerical simulation to produce a realization of the 21-cm signal for each model, using the same parameter space introduced in detail by Cohen et al. (2017). The astrophysical parameters can be subdivided into three main categories: properties of early star formation (minimum halo mass and star formation efficiency), properties of the heating sources (the X-ray spectrum and the total luminosity), and properties of reionization (the CMB optical depth). In addition, feedback mechanisms are taken into account when appropriate. The

uncertainty in the astrophysical parameters and feedback processes defines wide margins within which the actual 21-cm signal can vary. We used the 202 different models to fill up the parameter space and explore possible realizations of the signal.

First, using a few particular cases, we explored the components of the 21-cm signal. There are four possible sources of fluctuations: density (+velocity), Ly α background radiation, heating of the gas in the IGM, and reionization of the IGM. Among these sources, the radiative sources (UV, X-rays, and Ly α) are usually stressed while the density fluctuations are thought to have a minor contribution at redshifts and scales of interest (accessible by the current and the next generation of ground-based experiments such as the SKA). However, by carefully tagging power spectra peaks and exploring their origins, we found that density fluctuations can play an important role in driving the signal in the intermediate redshift range and on observable scales. This makes the 21-cm signal directly sensitive to fundamental cosmology, though in practice it will still be difficult to separate the density contribution from those of the other sources of 21-cm fluctuations.

The 21-cm power spectrum can have up to three peaks (dominated by density + velocity, Ly α , X-rays, and/or ionization). After tagging each peak of the power spectrum according to the dominant source of fluctuations, we related the observable properties (redshift and amplitude of the peaks) to the astrophysical inputs in each case. Generally, we found that the slope of the power spectrum (i.e. its dependence on scale) has a more universal structure than the power spectrum. The features include (from high to low redshifts): a minimum point when the Ly α radiative background imprints large-scale fluctuations in the 21-cm signal, a maximum when heating cancels density fluctuations on large scales, a minimum when heating dominates, and finally a maximum when ionization cancels out the density and heating fluctuations on large scales. (For cases with inefficient heating, the high-redshift maximum and low-redshift minimum disappear since heating fluctuations are not significant enough.) Moreover, the magnitude of the slope gives useful information for the astrophysical interpretation. A large slope indicates more structure on small scales, and is characteristic of density + velocity or moments where multiple fluctuation sources cancel each other out on large scales. On the other hand, when a single radiative background dominates, the power spectrum slope is low, indicating that the structure on small scales has been washed out.

We showed results for the cleanest correlations that we found, and provided simple fits. Our main results include the following:

(i) A map of the possible locations of peaks (versus redshift) of the power spectrum (Fig. 4) and of its slope (bottom panels of Fig. 5).

(ii) The redshift of the Ly α coupling transition can be estimated from the redshift of the high-redshift minimum of the slope (Fig. 7).

(iii) The redshift of the heating transition (and the mean gas temperature of the IGM at that time) can be estimated from the redshift of the low-redshift minimum of the slope (right-hand panel of Fig. 8).

(iv) The spectrum of the X-ray heating sources can be estimated from the properties of the low-redshift minimum of the slope (Fig. 9).

(v) By measuring the properties of the ionization-dominated peak of the power spectrum, it is possible to deduce whether heating occurred early or late; and if early, then the mean reionized fraction of the IGM at that time can also be estimated (Fig. 10).

(vi) Significant correlations (with low scatter) are expected between some peaks of the power spectrum and its slope, and peaks of the global 21-cm signal (Fig. 11). This will give an important consistency check once these various observations are made.

ACKNOWLEDGEMENTS

This project/publication was made possible through the support of a grant from the John Templeton Foundation. The opinions expressed in this publication are those of the authors and do not necessarily reflect the views of the John Templeton Foundation. RB and AC also acknowledge Israel Science Foundation grant 823/09 and the Ministry of Science and Technology, Israel, as well as the ISF-NSFC joint research program (grant No. 2580/17). RB's work has been partly done within the Labex Institut Lagrange de Paris (ILP, reference ANR-10-LABX-63) part of the IDEX SUPER, and received financial state aid managed by the Agence Nationale de la Recherche, as part of the programme Investissements d'avenir under the reference ANR-11-IDEX-0004-02. RB also acknowledges a Leverhulme Trust Visiting Professorship. This research was supported in part by Perimeter Institute for Theoretical Physics. Research at Perimeter Institute is supported by the Government of Canada through the Department of Innovation, Science and Economic Development Canada and by the Province of Ontario through the Ministry of Research, Innovation and Science.

REFERENCES

- Ali Z. S. et al., 2015, *ApJ*, 809, 61
 Baek S., Semelin B., Di Matteo P., Revaz Y., Combes F., 2010, *A&A*, 523, A4
 Barkana R., 2008, *MNRAS*, 391, 727
 Barkana R., 2009, *MNRAS*, 397, 1454
 Barkana R., 2016, *Phys. Rep.*, 645, 1
 Barkana R., Loeb A., 2001, *Phys. Rep.*, 349, 125
 Barkana R., Loeb A., 2004, *ApJ*, 609, 474
 Barkana R., Loeb A., 2005a, *ApJ*, 624, L65
 Barkana R., Loeb A., 2005b, *ApJ*, 626, 1
 Beardsley A. P. et al., 2016, *ApJ*, 833, 102
 Bernardi G. et al., 2016, *MNRAS*, 461, 2847
 Bharadwaj S., Ali S. S., 2004, *MNRAS*, 352, 142
 Bowman J. D., Rogers A. E. E., 2010, *Nature*, 468, 796
 Bowman J. D. et al., 2013, *PASA*, 30, 31
 Bromm V., Coppi P. S., Larson R. B., 2002, *ApJ*, 564, 23
 Brorby M., Kaaret P., Prestwich A., Mirabel I. F., 2016, *MNRAS*, 457, 4081
 Burns J. et al., 2015, *IAUGA*, 2229646
 Chen X., Miralda-Escudé J., 2004, *ApJ*, 602, 1
 Chuzhoy L., Shapiro P. R., 2006, *ApJ*, 651, 1
 Cohen A., Fialkov A., Barkana R., 2016, *MNRAS*, 459, L90
 Cohen A., Fialkov A., Barkana R., Lotem M., 2017, *MNRAS*, 472, 1915
 Dalal N., Pen U.-L., Seljak U., 2010, *JCAP*, 11, 007
 DeBoer D. R. et al., 2017, *PASP*, 129, 045001
 Dijkstra M., Gilfanov M., Loeb A., Sunyaev R., 2012, *MNRAS*, 421, 213
 Fialkov A., 2014, *IJMPD*, 2330017
 Fialkov A., Barkana R., 2014, *MNRAS*, 445, 213
 Fialkov A., Loeb A., 2016, *ApJ*, 821, 59
 Fialkov A., Barkana R., Tselikhovich D., Hirata C., 2012, *MNRAS*, 424, 1335
 Fialkov A., Barkana R., Visbal E., Tselikhovich D., Hirata C., 2013, *MNRAS*, 432, 2909
 Fialkov A., Barkana R., Visbal E., 2014, *Nature*, 506, 197
 Fialkov A., Barkana R., Pinhas A., Visbal E., 2014, *MNRAS*, 437, 36
 Fialkov A., Barkana R., Cohen A., 2015, *Phys. Rev. Lett.*, 114, 101303
 Fialkov A., Cohen A., Barkana R., Silk J., 2017, *MNRAS*, 464, 3498
 Field G. B., 1958, *Proc. IRE*, 46, 240

- Finlator K. et al., 2017, *MNRAS*, 464, 1633
- Fragos T., Lehmer B. D., Naoz S., Zezas A., Basu-Zych A., 2013, *ApJ*, 776, L31
- Furlanetto S. R., 2006, *MNRAS*, 371, 867
- Furlanetto S. R., Oh S. P., Briggs F. H., 2006, *Phys. Rep.*, 433, 181
- Greig B., Mesinger A., 2015, *MNRAS*, 449, 4246
- Greig B., Mesinger A., 2018, *Proc. IAU Symp.* 333, Peering towards Cosmic Dawn. Cambridge Univ. Press, Cambridge
- Haiman Z., Rees M. J., Loeb A., 1997, *ApJ*, 476, 458
- Haiman Z., Abel T., Rees M. J., 2000, *ApJ*, 534, 11
- Harker G. J. A., Mirocha J., Burns J. O., Pritchard J. R., 2016, *MNRAS*, 455, 3829
- Hassan S., Dave R., Finlator K., Santos M. G., 2017, *MNRAS*, 468, 122
- Hirata C. M., 2006, *MNRAS*, 367, 259
- Jacobs D. C. et al., 2015, *ApJ*, 801, 51
- Jeon M., Pawlik A. H., Bromm V., Milosavljevic M., 2014, *MNRAS*, 444, 3288
- Kern N. S., Liu A., Parsons A. R., Mesinger A., Greig B., 2017, *ApJ*, 848, 23
- Koopmans L. et al., 2015, in Bourke T. L., et al., eds, *Proc. Sci., The Cosmic Dawn and Epoch of Reionisation with SKA*. SISSA, Trieste, PoS(AASKA14)001
- Lehmer B. D. et al., 2012, *ApJ*, 752, 46
- Lidz A. et al., 2007, *ApJ*, 659, 865
- Lidz A., Zahn O., McQuinn M., Zaldarriaga M., Hernquist L., 2008, *ApJ*, 680, 962
- Liu A., Pritchard J., Allison R., Parsons A. R., Seljak U., Sherwin B. D., 2016, *Phys. Rev. D*, 93, 3013
- Machacek M. E., Bryan G. L., Abel T., 2001, *ApJ*, 548, 509
- Madau P., Haardt F., 2015, *ApJ*, 813L, 8
- Madau P., Rees M. J., Volonteri M., Haardt F., Oh S. P., 2004, *ApJ*, 604, 484
- Madau P., Fragos T., 2017, *ApJ*, 840, 39
- McQuinn M., 2012, *MNRAS*, 426, 1349
- Mesinger A., Furlanetto S., Cen R., 2011, *MNRAS*, 411, 955
- Mesinger A., Ferrara A., Spiegel D. S., 2013, *MNRAS*, 431, 621
- Mineo S., Gilfanov M., Sunyaev R., 2012a, *MNRAS*, 426, 1870
- Mineo S., Gilfanov M., Sunyaev R., 2012b, *MNRAS*, 419, 2095
- Mirabel I. F., Dijkstra M., Laurent P., Loeb A., Pritchard J. R., 2011, *A&A*, 528, 149
- Mirocha J., Harker G. J. A., Burns J. O., 2013, *ApJ*, 777, 118
- Mirocha J., Harker G. J. A., Burns J. O., 2015, *ApJ*, 813, 11
- Mirocha J., Furlanetto S. R., Sun G., 2017, *MNRAS*, 464, 1365
- Monsalve R. A., Rogers A. E. E., Bowman J. D., Mozden T. J., 2017, *ApJ*, 835, 49
- Navarro J. F., Steinmetz M., 2000, *ApJ*, 538, 477
- O'Shea B. W., Norman M. L., 2008, *ApJ*, 673, 14
- O'Shea B. W., Wise J. H., Xu H., Norman M. L., 2015, *ApJ*, 807, 12
- Ocvirk P. et al., 2016, *MNRAS*, 463, 1462
- Pacucci F., Mesinger A., Mineo S., Ferrara A., 2014, *MNRAS*, 443, 678
- Parsons A. R. et al., 2014, *ApJ*, 788, 106
- Patil A. H. et al., 2017, *ApJ*, 838, 65
- Planck Collaboration XLVII, 2016a, *A&A*, 594, A13
- Planck Collaboration XLVI, 2016b, *A&A*, 596, A107
- Planck Collaboration XIII, 2016c, *A&A*, 596, A108
- Pober J. C. et al., 2014, *ApJ*, 782, 66
- Pober J. C. et al., 2015, *ApJ*, 809, 62
- Price D. C. et al., 2018, *MNRAS*, 00, 00
- Pritchard J. R., Furlanetto S. R., 2006, *MNRAS*, 372, 1093
- Pritchard J. R., Furlanetto S. R., 2007, *MNRAS*, 376, 1680
- Pritchard J. R., Loeb A., 2008, *Phys. Rev. D*, 78, 3511
- Rees M. J., 1986, *MNRAS*, 222, 27
- Santos M. G. et al., 2008, *ApJ*, 689, 1
- Schauer A. T. P., Whalen D. J., Glover S. C. O., Klessen R. S., 2015, *MNRAS*, 454, 2441
- Schmit C. J., Pritchard J. R., 2018, *MNRAS*, 475, 1213
- Semelin B., Eames E., Bolgar F., Caillat M., 2017, *MNRAS*, 472, 4508
- Shimabukuro H., Semelin B., 2017, *MNRAS*, 468, 3869
- Singh S. et al., 2017a, *ApJ*, 845, L12
- Singh S. et al., 2017b, *ApJL*, 845, L12
- Sobacchi E., Mesinger A., 2013, *MNRAS*, 432, 3340
- Sokolowski M. et al., 2015, *PASA*, 32, e004
- Tanaka T., Perna R., Haiman Z., 2012, *MNRAS*, 425, 2974
- Tegmark M., Silk J., Rees M., Blanchard A., Abel T., Palla F., 1997, *ApJ*, 474, 1
- Tseliakhovich D., Hirata C. M., 2010, *Phys. Rev. D*, 82, 3520
- Tseliakhovich D., Barkana R., Hirata C. M., 2011, *MNRAS*, 418, 906
- Visbal E., Barkana R., Fialkov A., Tseliakhovich D., Hirata C. M., 2012, *Nature*, 487, 70
- Visbal E., Zoltan H., Terrazas B., Bryan G. L., Barkana R., 2014, *MNRAS*, 445, 107
- Voytek T. C., Natarajan A., Jáuregui García J. M., Peterson J. B., López-Cruz O., 2014, *ApJ*, 782, L9
- Weinberg D. H., Hernquist L., Katz N., 1997, *ApJ*, 477, 8
- Wise J. H., Abel T., 2007, *ApJ*, 671, 1559
- Wise J. H., Demchenko V. G., Halicek M. T., Norman M. L., Turk M. J., Abel T., Smith B. D., 2014, *MNRAS*, 442, 2560
- Wouthuysen S. A., 1952, *AJ*, 57, 31
- Wyithe J. S. B., Loeb A., 2013, *MNRAS*, 428, 2741
- Xu H., Wise J. H., Norman M. L., Ahn K., O'Shea B. W., 2016, *ApJ*, 833, 84
- Yoshida N., Abel T., Hernquist L., Sugiyama N., 2003, *ApJ*, 592, 645
- Zarka P., Girard J. N., Tagger M., Denis L., 2012, in Boissier S., de Laverny P., Nardetto N., Samadi R., Valls-Gabaud D., Wozniak H., eds, *SF2A-2012: Proceedings of the Annual meeting of the French Society of Astronomy and Astrophysics, LSS/NenuFAR: The LOFAR Super Station project in Nançay*, p. 687

APPENDIX A: CASES LIST

Table A1. List of the parameter sets used in this paper. C2016b means Cohen et al. (2017) and F2017 means Fialkov et al. (2017).

#		f_*	V_c (km s)	f_X	SED	τ	LW	Low-mass cutoff	ζ	R_{mfp} (Mpc)
1	Filler	0.005	4.2	0.1	Hard	0.066	On	Equation 4 from C2016b	20	70
2	Filler	0.005	4.2	0.1	Hard	0.082	On	Equation 4 from C2016b	32	70
3	Filler	0.005	4.2	0.1	Soft	0.066	On	Equation 4 from C2016b	20	70
4	Filler	0.005	4.2	0.1	Soft	0.082	On	Equation 4 from C2016b	32	70
5	Filler	0.005	4.2	1	Hard	0.066	On	Equation 4 from C2016b	20	70
6	Filler	0.005	4.2	1	Hard	0.082	On	Equation 4 from C2016b	32	70
7	Filler	0.005	4.2	1	Soft	0.066	On	Equation 4 from C2016b	20	70
8	Filler	0.005	4.2	1	Soft	0.082	On	Equation 4 from C2016b	32	70
9	Filler	0.005	4.2	8	Hard	0.066	On	Equation 4 from C2016b	20	70
10	Filler	0.005	4.2	8	Hard	0.082	On	Equation 4 from C2016b	32	70
11	Filler	0.005	4.2	8	Soft	0.066	On	Equation 4 from C2016b	19	70
12	Filler	0.005	4.2	8	Soft	0.082	On	Equation 4 from C2016b	31	70
13	Filler	0.05	4.2	0.1	Hard	0.066	On	Equation 4 from C2016b	20	70
14	Filler	0.05	4.2	0.1	Hard	0.082	On	Equation 4 from C2016b	36	70
15	Filler	0.05	4.2	0.1	Soft	0.066	On	Equation 4 from C2016b	20	70
16	Filler	0.05	4.2	0.1	Soft	0.082	On	Equation 4 from C2016b	36	70
17	Filler	0.05	4.2	1	Hard	0.066	On	Equation 4 from C2016b	20	70
18	Filler	0.05	4.2	1	Hard	0.082	On	Equation 4 from C2016b	36	70
19	Filler	0.05	4.2	1	Soft	0.066	On	Equation 4 from C2016b	19	70
20	Filler	0.05	4.2	1	Soft	0.082	On	Equation 4 from C2016b	35	70
21	Filler	0.05	4.2	8	Hard	0.066	On	Equation 4 from C2016b	18	70
22	Filler	0.05	4.2	8	Hard	0.082	On	Equation 4 from C2016b	34	70
23	Filler	0.05	4.2	8	Soft	0.066	On	Equation 4 from C2016b	15	70
24	Filler	0.05	4.2	8	Soft	0.082	On	Equation 4 from C2016b	31	70
25	Filler	0.5	4.2	0.1	Hard	0.066	On	Equation 4 from C2016b	26	70
26	Filler	0.5	4.2	0.1	Hard	0.082	On	Equation 4 from C2016b	51	70
27	Filler	0.5	4.2	0.1	Soft	0.066	On	Equation 4 from C2016b	25	70
28	Filler	0.5	4.2	0.1	Soft	0.082	On	Equation 4 from C2016b	51	70
29	Filler	0.5	4.2	1	Hard	0.066	On	Equation 4 from C2016b	24	70
30	Filler	0.5	4.2	1	Hard	0.082	On	Equation 4 from C2016b	50	70
31	Filler	0.5	4.2	1	Soft	0.066	On	Equation 4 from C2016b	20	70
32	Filler	0.5	4.2	1	Soft	0.082	On	Equation 4 from C2016b	44	70
33	Filler	0.5	4.2	8	Hard	0.066	On	Equation 4 from C2016b	16	70
34	Filler	0.5	4.2	8	Hard	0.082	On	Equation 4 from C2016b	39	70
35	Filler	0.5	4.2	8	Soft	0.066	On	Equation 4 from C2016b	1.5	70
36	Filler	0.5	4.2	8	Soft	0.082	On	Equation 4 from C2016b	19	70
37	Filler	0.005	16.5	0.1	Hard	0.066	–	–	20	70
38	Filler	0.005	16.5	0.1	Hard	0.082	–	–	37	70
39	Filler	0.005	16.5	0.1	Soft	0.066	–	–	20	70
40	Filler	0.005	16.5	0.1	Soft	0.082	–	–	37	70
41	Filler	0.005	16.5	1	Hard	0.066	–	–	20	70
42	Filler	0.005	16.5	1	Hard	0.082	–	–	37	70
43	Filler	0.005	16.5	1	Soft	0.066	–	–	20	70
44	Filler	0.005	16.5	1	Soft	0.082	–	–	36	70
45	Filler	0.005	16.5	8	Hard	0.066	–	–	20	70
46	Filler	0.005	16.5	8	Hard	0.082	–	–	36	70
47	Filler	0.005	16.5	8	Soft	0.066	–	–	19	70
48	Filler	0.005	16.5	8	Soft	0.082	–	–	36	70
49	Filler	0.05	16.5	0.1	Hard	0.066	–	–	20	70
50	Filler	0.05	16.5	0.1	Hard	0.082	–	–	37	70
51	Filler	0.05	16.5	0.1	Soft	0.066	–	–	20	70
52	Filler	0.05	16.5	0.1	Soft	0.082	–	–	36	70
53	Standard	0.05	16.5	1	Hard	0.066	–	–	20	70
54	Filler	0.05	16.5	1	Hard	0.082	–	–	36	70
55	Filler	0.05	16.5	1	Soft	0.066	–	–	19	70
56	Filler	0.05	16.5	1	Soft	0.082	–	–	36	70
57	Filler	0.05	16.5	8	Hard	0.066	–	–	19	70
58	Filler	0.05	16.5	8	Hard	0.082	–	–	35	70
59	Filler	0.05	16.5	8	Soft	0.066	–	–	15	70
60	Filler	0.05	16.5	8	Soft	0.082	–	–	31	70
61	Filler	0.5	16.5	0.1	Hard	0.066	–	–	20	70
62	Filler	0.5	16.5	0.1	Hard	0.082	–	–	36	70
63	Filler	0.5	16.5	0.1	Soft	0.066	–	–	19	70

Table A1 – continued

#		f_*	V_c (km s)	f_x	SED	τ	LW	Low-mass cutoff	ζ	R_{mfp} (Mpc)
64	Filler	0.5	16.5	0.1	Soft	0.082	–	–	36	70
65	Filler	0.5	16.5	1	Hard	0.066	–	–	18	70
66	Filler	0.5	16.5	1	Hard	0.082	–	–	35	70
67	Filler	0.5	16.5	1	Soft	0.066	–	–	14	70
68	Filler	0.5	16.5	1	Soft	0.082	–	–	30	70
69	Filler	0.5	16.5	8	Hard	0.066	–	–	11.5	70
70	Filler	0.5	16.5	8	Hard	0.082	–	–	27	70
71	Filler	0.5	16.5	8	Soft	0.066	–	–	0.01	70
72	Filler	0.5	16.5	8	Soft	0.082	–	–	9	70
73	Filler	0.005	35.5	0.1	Hard	0.082	–	–	130	70
74	Filler	0.005	35.5	0.1	Soft	0.066	–	–	53	70
75	Filler	0.005	35.5	0.1	Soft	0.082	–	–	130	70
76	Filler	0.005	35.5	1	Hard	0.066	–	–	53	70
77	Filler	0.005	35.5	1	Hard	0.082	–	–	130	70
78	Filler	0.005	35.5	1	Soft	0.066	–	–	53	70
79	Filler	0.005	35.5	1	Soft	0.082	–	–	130	70
80	Filler	0.005	35.5	8	Hard	0.066	–	–	53	70
81	Filler	0.005	35.5	8	Hard	0.082	–	–	130	70
82	Filler	0.005	35.5	8	Soft	0.066	–	–	53	70
83	Filler	0.005	35.5	8	Soft	0.082	–	–	129	70
84	Filler	0.05	35.5	0.1	Hard	0.066	–	–	53	70
85	Filler	0.05	35.5	0.1	Hard	0.082	–	–	130	70
86	Filler	0.05	35.5	0.1	Soft	0.066	–	–	53	70
87	Filler	0.05	35.5	0.1	Soft	0.082	–	–	130	70
88	Filler	0.05	35.5	1	Hard	0.066	–	–	53	70
89	Filler	0.05	35.5	1	Hard	0.082	–	–	130	70
90	Filler	0.05	35.5	1	Soft	0.066	–	–	52	70
91	Filler	0.05	35.5	1	Soft	0.082	–	–	129	70
92	Filler	0.05	35.5	8	Hard	0.066	–	–	52	70
93	Filler	0.05	35.5	8	Hard	0.082	–	–	129	70
94	Filler	0.05	35.5	8	Soft	0.066	–	–	48	70
95	Filler	0.05	35.5	8	Soft	0.082	–	–	124	70
96	Filler	0.5	35.5	0.1	Hard	0.066	–	–	53	70
97	Filler	0.5	35.5	0.1	Hard	0.082	–	–	130	70
98	Filler	0.5	35.5	0.1	Soft	0.066	–	–	52	70
99	Filler	0.5	35.5	0.1	Soft	0.082	–	–	129	70
100	Filler	0.5	35.5	1	Hard	0.066	–	–	52	70
101	Filler	0.5	35.5	1	Hard	0.082	–	–	129	70
102	Filler	0.5	35.5	1	Soft	0.066	–	–	47	70
103	Filler	0.5	35.5	1	Soft	0.082	–	–	122	70
104	Filler	0.5	35.5	8	Hard	0.066	–	–	43	70
105	Filler	0.5	35.5	8	Hard	0.082	–	–	119	70
106	Filler	0.5	35.5	8	Soft	0.066	–	–	22	70
107	Filler	0.5	35.5	8	Soft	0.082	–	–	91	70
108	Large	0.5	4.2	10	MQ	0.098	Off	Equation 3 from C2016b	27	70
109	Large	0.5	4.2	0.1	Soft	0.098	Off	Equation 3 from C2016b	26	70
110	Large	0.5	4.2	0.1	MQ	0.098	Off	Equation 3 from C2016b	28	70
111	Large	0.005	4.2	10	Soft	0.098	Off	Equation 3 from C2016b	26	70
112	Large	0.005	4.2	10	MQ	0.098	Off	Equation 3 from C2016b	27	70
113	Large	0.005	4.2	0.1	Soft	0.098	Off	Equation 3 from C2016b	28	70
114	Large	0.005	4.2	0.1	MQ	0.098	Off	Equation 3 from C2016b	28	70
115	Large	0.5	76.5	10	Soft	0.066	–	–	387	70
116	Large	0.5	76.5	10	Soft	0.098	–	–	6000	70
117	Large	0.5	76.5	10	MQ	0.066	–	–	450	70
118	Large	0.5	76.5	10	MQ	0.098	–	–	6060	70
119	Large	0.5	76.5	0.1	Soft	0.066	–	–	455	70
120	Large	0.5	76.5	0.1	Soft	0.098	–	–	6060	70
121	Large	0.5	76.5	0.1	MQ	0.098	–	–	6060	70
122	Large	0.016	76.5	10	Soft	0.066	–	–	455	70
123	Large	0.16	76.5	10	Soft	0.098	–	–	6060	70
124	Large	0.016	76.5	10	MQ	0.066	–	–	455	70
125	Large	0.16	76.5	10	MQ	0.098	–	–	6060	70
126	Large	0.16	76.5	0.1	Soft	0.098	–	–	6060	70

Table A1 – *continued*

#		f_*	V_c (km s)	f_X	SED	τ	LW	Low-mass cutoff	ζ	R_{mfp} (Mpc)
127	Large	0.16	76.5	0.1	MQ	0.098	–	–	6060	70
128	Small	0.16	4.2	3.16	Hard and MQ	0.066	On	Equation 4 from C2016b	21	70
129	Small	0.16	4.2	3.16	Hard and MQ	0.082	On	Equation 4 from C2016b	41	70
130	Small	0.16	4.2	3.16	Soft and MQ	0.066	On	Equation 4 from C2016b	18	70
131	Small	0.16	4.2	3.16	Soft and MQ	0.082	On	Equation 4 from C2016b	38	70
132	Small	0.16	4.2	0.32	Hard and MQ	0.066	On	Equation 4 from C2016b	21	70
133	Small	0.16	4.2	0.32	Hard and MQ	0.082	On	Equation 4 from C2016b	42	70
134	Small	0.16	4.2	0.32	Soft and MQ	0.066	On	Equation 4 from C2016b	21	70
135	Small	0.16	4.2	0.32	Soft and MQ	0.082	On	Equation 4 from C2016b	42	70
136	Small	0.016	4.2	3.16	Hard and MQ	0.066	On	Equation 4 from C2016b	20	70
137	Small	0.016	4.2	3.16	Hard and MQ	0.082	On	Equation 4 from C2016b	33	70
138	Small	0.016	4.2	3.16	Soft and MQ	0.066	On	Equation 4 from C2016b	19	70
139	Small	0.016	4.2	3.16	Soft and MQ	0.082	On	Equation 4 from C2016b	33	70
140	Small	0.016	4.2	0.32	Hard and MQ	0.066	On	Equation 4 from C2016b	20	70
141	Small	0.016	4.2	0.32	Hard and MQ	0.082	On	Equation 4 from C2016b	33	70
142	Small	0.016	4.2	0.32	Soft and MQ	0.066	On	Equation 4 from C2016b	20	70
143	Small	0.016	4.2	0.32	Soft and MQ	0.082	On	Equation 4 from C2016b	33	70
144	Small	0.16	35.5	3.16	Hard and MQ	0.066	–	–	52	70
145	Small	0.16	35.5	3.16	Hard and MQ	0.082	–	–	129	70
146	Small	0.16	35.5	3.16	Soft and MQ	0.066	–	–	49	70
147	Small	0.16	35.5	3.16	Soft and MQ	0.082	–	–	126	70
148	Small	0.16	35.5	0.32	Hard and MQ	0.066	–	–	53	70
149	Small	0.16	35.5	0.32	Hard and MQ	0.082	–	–	130	70
150	Small	0.16	35.5	0.32	Soft and MQ	0.066	–	–	53	70
151	Small	0.16	35.5	0.32	Soft and MQ	0.082	–	–	130	70
152	Small	0.016	35.5	3.16	Hard and MQ	0.066	–	–	53	70
153	Small	0.016	35.5	3.16	Hard and MQ	0.082	–	–	130	70
154	Small	0.016	35.5	3.16	Soft and MQ	0.066	–	–	53	70
155	Small	0.016	35.5	3.16	Soft and MQ	0.082	–	–	130	70
156	Small	0.016	35.5	0.32	Hard and MQ	0.066	–	–	53	70
157	Small	0.016	35.5	0.32	Hard and MQ	0.082	–	–	130	70
158	Small	0.016	35.5	0.32	Soft and MQ	0.066	–	–	53	70

Table A1 – continued

#		f_*	V_c (km s)	f_X	SED	τ	LW	Low-mass cutoff	ζ	R_{mfp} (Mpc)
159	Small	0.016	35.5	0.32	Soft and MQ	0.082	–	–	130	70
160	F2017	0.05	16.5	1	MQ	0.0738	–	–	24	70
161	F2017	0.05	16.5	1	MQ	0.0956	–	–	57	70
162	F2017	0.05	16.5	10.8	Hard	0.0756	–	–	24	70
163	F2017	0.05	16.5	29.5	Soft	0.0859	–	–	24	70
164	F2017	0.05	16.5	11.4	MQ	0.0747	–	–	24	70
165	F2017	0.05	16.5	44.4	Hard	0.0990	–	–	57	70
166	F2017	0.05	16.5	102	Soft	0.1111	–	–	57	70
167	F2017	0.05	16.5	74.4	MQ	0.0977	–	–	57	70
168	F2017	0.05	16.5	0.01	Hard	0.0739	–	–	24	70
169	F2017	0.05	16.5	0.0023	Soft	0.0746	–	–	24	70
170	F2017	0.05	16.5	0	Hard	0.0957	–	–	57	70
171	F2017	0.05	35.5	1	MQ	0.0597	–	–	32	70
172	F2017	0.05	35.5	1	MQ	0.0831	–	–	112	70
173	F2017	0.05	35.5	14.7	Hard	0.0609	–	–	32	70
174	F2017	0.05	35.5	41.4	Soft	0.0688	–	–	32	70
175	F2017	0.05	35.5	12.1	MQ	0.0606	–	–	32	70
176	F2017	0.05	35.5	79.2	Hard	0.0850	–	–	112	70
177	F2017	0.05	35.5	188	Soft	0.0934	–	–	112	70
178	F2017	0.05	35.5	87.9	MQ	0.0847	–	–	112	70
179	F2017	0.05	35.5	0	Hard	0.0831	–	–	112	70
180	F2017	0.05	35.5	0.036	Hard	0.0597	–	–	32	70
181	F2017	0.05	35.5	0.0095	Soft	0.0601	–	–	32	70
182	R_{mfp}	0.005	35.5	0.1	Hard	0.082	–	–	125	20
183	R_{mfp}	0.005	35.5	0.1	Soft	0.082	–	–	125	20
184	R_{mfp}	0.005	35.5	1	Hard	0.082	–	–	125	20
185	R_{mfp}	0.05	35.5	0.1	Hard	0.082	–	–	125	20
186	R_{mfp}	0.5	76.5	0.1	Hard	0.066	–	–	389	20
187	R_{mfp}	0.5	76.5	0.1	Hard	0.082	–	–	1411	20
188	R_{mfp}	0.005	35.5	0.1	Hard	0.082	–	–	202	5
189	R_{mfp}	0.005	35.5	0.1	Soft	0.082	–	–	202	5
190	R_{mfp}	0.005	35.5	1	Hard	0.082	–	–	202	5
191	R_{mfp}	0.05	35.5	0.1	Hard	0.082	–	–	202	5
192	R_{mfp}	0.5	76.5	0.1	Hard	0.066	–	–	1172	5
193	R_{mfp}	0.5	76.5	0.1	Hard	0.082	–	–	6125	5
194	Low τ	0.005	35.5	8	Hard	0.055	–	–	32	70
195	Low τ	0.5	35.5	0.1	Hard	0.055	–	–	32	70
196	Low τ	0.5	35.5	8	Hard	0.055	–	–	21	70
197	Low τ	0.05	35.5	1	Hard	0.055	–	–	32	70
198	Low τ	0.05	35.5	1	Soft	0.055	–	–	32	70
199	Low τ	0.05	35.5	0.1	Hard	0.055	–	–	32	70
200	Low τ	0.05	35.5	0.1	Soft	0.055	–	–	32	70
201	Low τ	0.05	35.5	8	Hard	0.055	–	–	31	70
202	Low τ	0.05	35.5	8	Soft	0.055	–	–	28	70

APPENDIX B: ADDITIONAL FIGURES

To demonstrate the variety of possible realizations of the power spectra and corresponding slopes, we show figures analogues to Fig. 1 but for various sets of astrophysical parameters.

First we show variations of our standard case, altering one astrophysical parameter at a time. The left column of Fig. B1 presents the case of strong X-rays with $f_X = 8$ instead of $f_X = 1$ (#57 in Table A1). Because of the stronger heating, the Ly α peak becomes narrower compared to the standard case. This is because in model #57 heating starts earlier and X-rays (which anticorrelate with Ly α) cut the Ly α peak off. For the same reason, the features of the slope (high- z max and low- z min) shift to higher redshifts. Compared to the standard case, the heating peak in this case is more prominent and occurs earlier, but is still relatively small as expected with

hard X-rays. Next, we show a case with more massive haloes (#88, right column of Fig. B1), setting the minimum $V_c = 35.5 \text{ km s}^{-1}$ instead of $V_c = 16.5 \text{ km s}^{-1}$ in the standard case. In this case all the cosmological milestones are shifted to lower redshifts, as heavier haloes can only form stars somewhat later (though the timing of reionization is fixed since we have not changed τ). The fluctuations are higher in this case because of the higher bias of the more massive galactic haloes, and reionization occurs over a smaller redshift interval.

The left column of Fig. B2 shows a case with a low SFR ($f_* = 0.005$, #41, compared to $f_* = 0.05$ in the standard case). In this case, because of the inefficient star formation, it takes longer to build up the radiative backgrounds. Halo formation advances more rapidly at higher redshifts, so while Ly α coupling is delayed, cosmic heating is delayed far more. As a result, the power spectrum

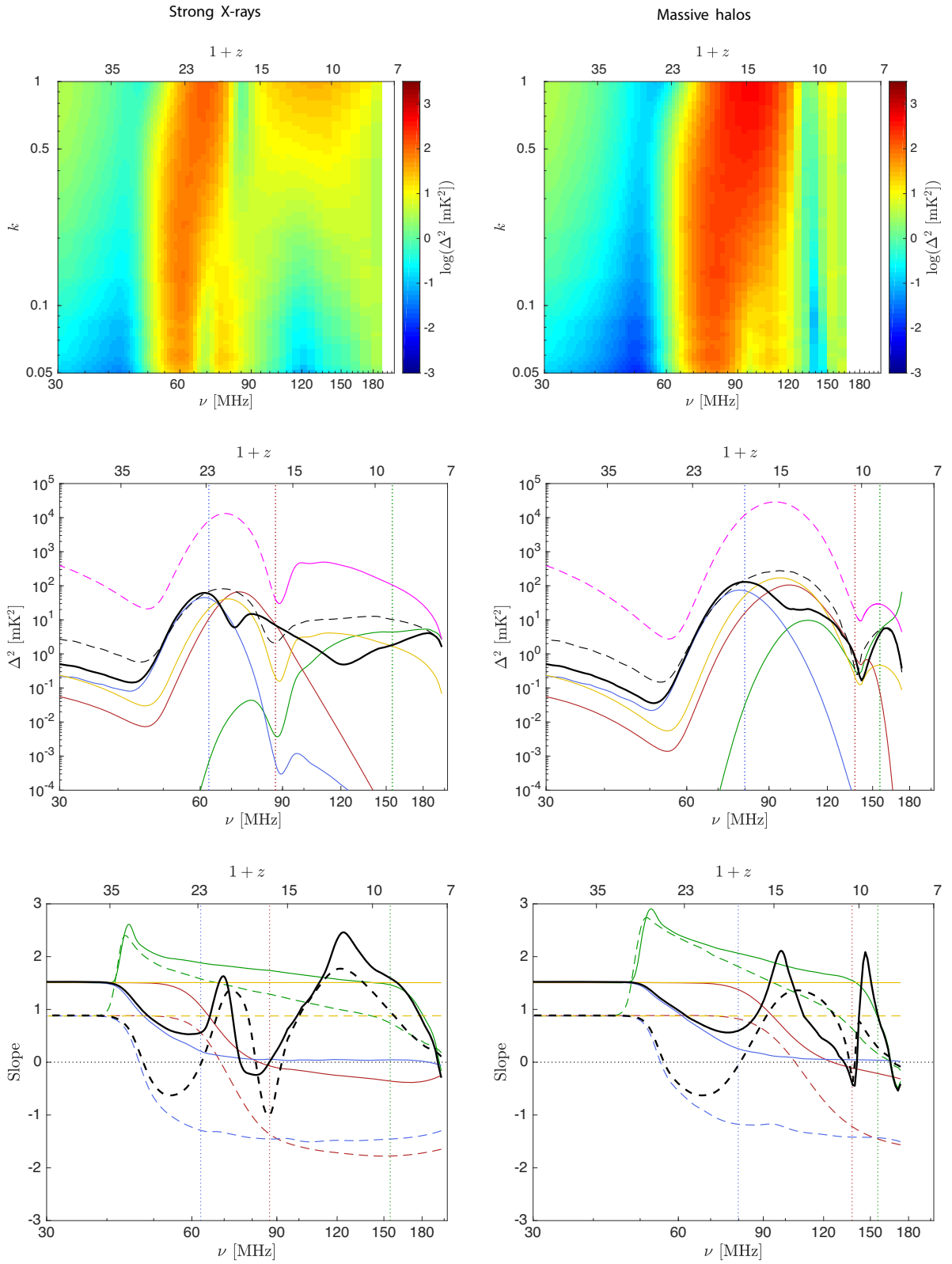


Figure B1. Variation of Fig. 1, same line colours and styles. **Left:** The standard case except that $f_X = 8$, model #57. **Right:** The standard case except that $V_c = 35.5 \text{ km s}^{-1}$, model #88.

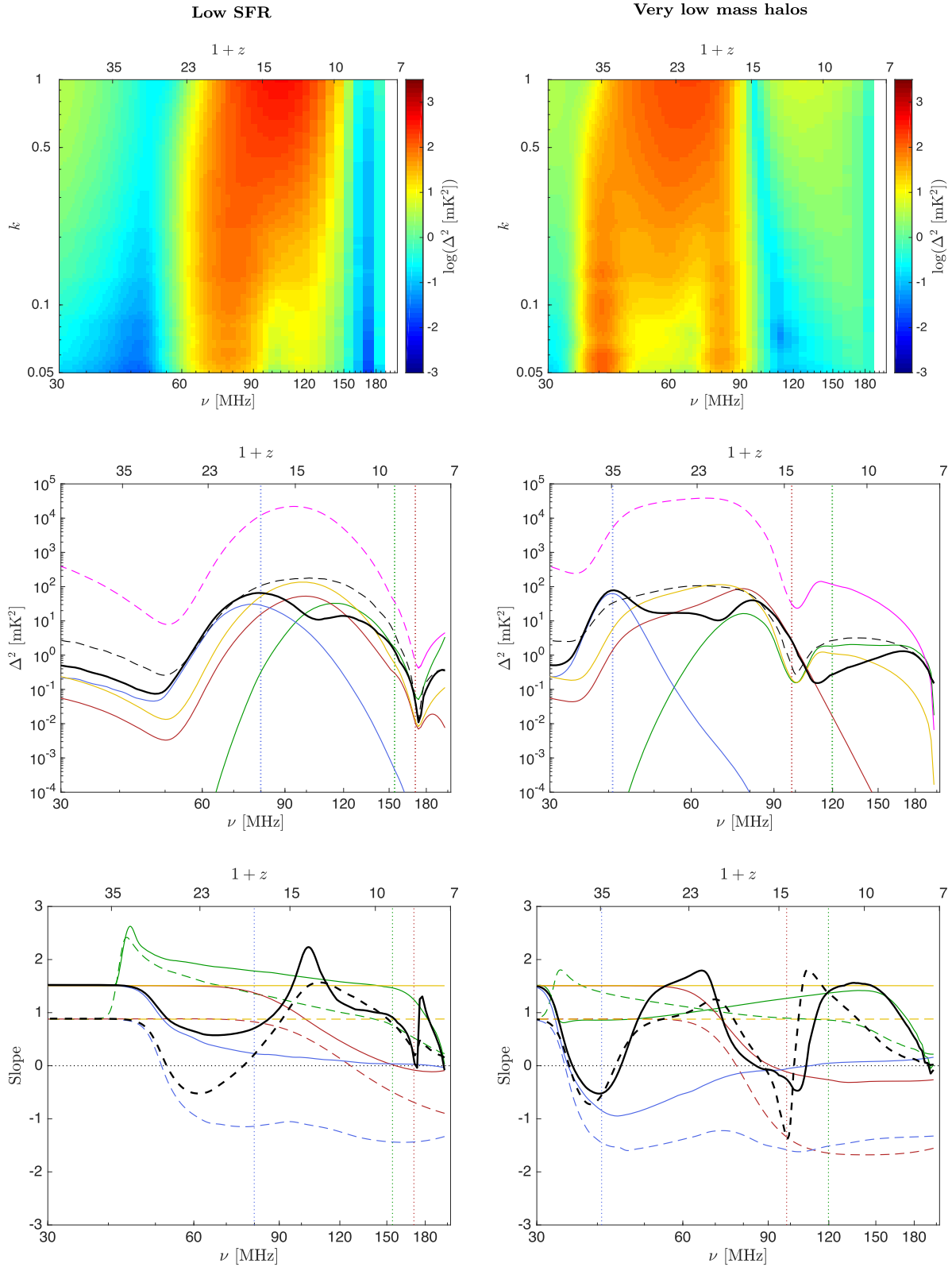


Figure B2. Variation of Fig. 1, same line colours and styles. **Left:** The standard case except that $f_s = 0.005$, model #41. **Right:** High-redshift star formation dominated by very low mass haloes, and X-rays produced only by miniquasars, model #108.

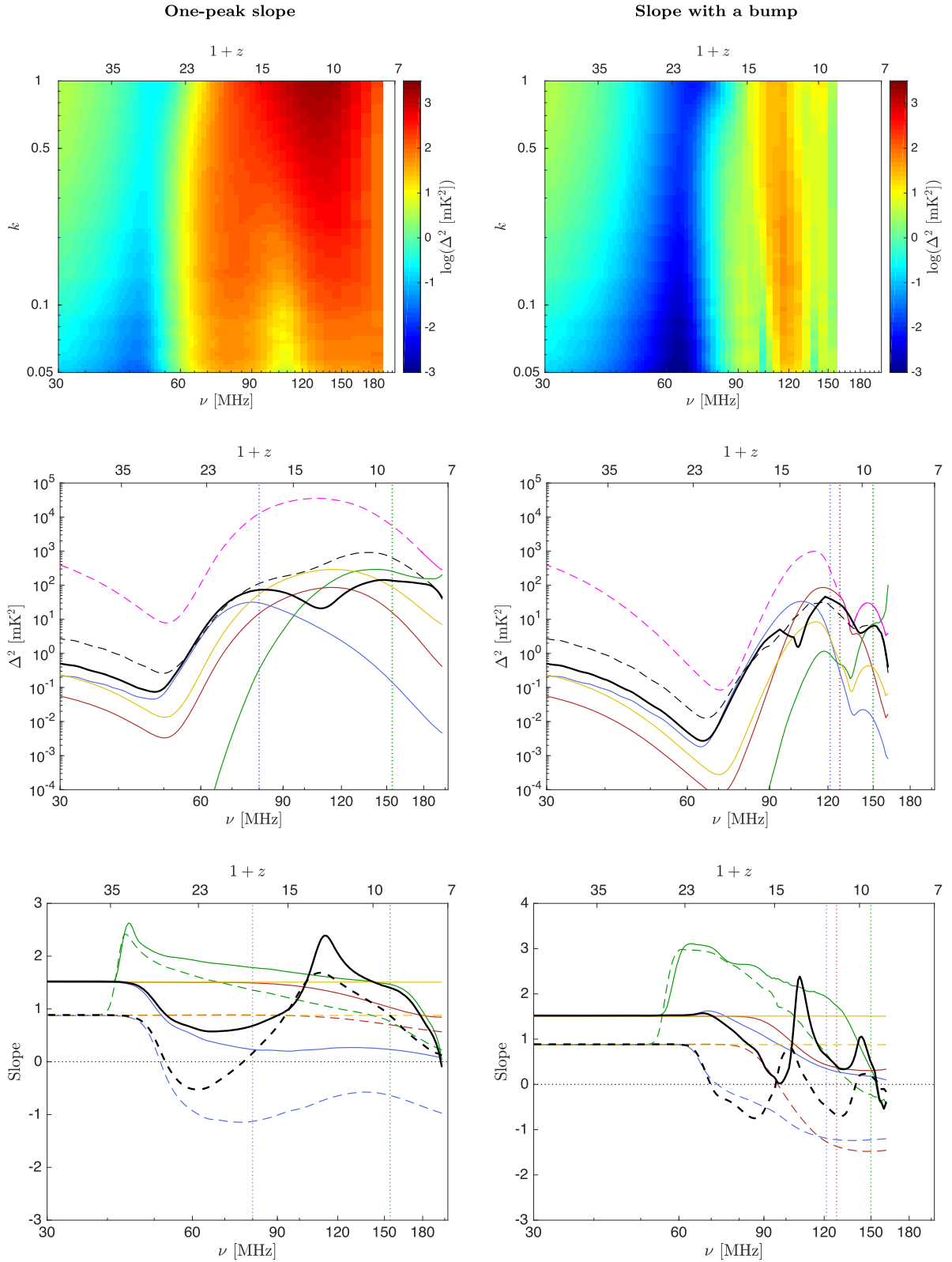


Figure B3. Variation of Fig. 1, same line colours and styles. **Left:** A case with one minimum and one maximum in the slope, model #37. **Right:** A case with an extra bump at very high redshifts due to late Ly α coupling, model #122.

peaks are wider. Moreover, in this case density fluctuations dominate the high-redshift peak on both large and small scales. The right column of Fig. B2 shows an unusual case (#108) in which the fluctuation level remains consistently high over a wide range of high redshifts. This case has the earliest possible high star formation, in that the star formation efficiency is very high ($f_* = 50$ per cent) and stars are assumed to form in the lowest possible halo masses (corresponding to the molecular cooling threshold). This leads to an early saturation of Ly α coupling. However, this model assumes MQ as the only X-ray heating source, so heating occurs relatively late. As a result, the Ly α and heating era are well separated in time allowing density fluctuations to dominate the signal at intermediate redshifts (where the global signal shows strong absorption and thus the fluctuations are strong as well). Note, though, that this case has an optical depth of 0.098 to the CMB, which is ruled out at about the $3 - \sigma$ level (Planck Collaboration et al. 2016b).

Fig. B3 shows two examples of cases with slopes that have unusual structure (i.e. different from the typical shape of two minima and two maxima). The left-hand panel presents a case (#37) with very low efficiencies of SFR and heating ($f_* = 0.005$ and $f_X = 0.1$), so that there is no heating transition before the end of reionization. As a result, the high-redshift maximum and low-redshift minimum of the slope disappear. Note that in this type of case, the low-redshift maximum occurs when ionization and heating fluctuations together cancel out density + velocity on large scales. Finally, we show a case (right-hand panel of Fig. B3, #122) with very weak star formation (as it is limited to very massive haloes, with $V_c = 76.5 \text{ km s}^{-1}$, and even there it has a low efficiency). This case has an extra bump (i.e. small maximum) at very high redshifts due to late Ly α coupling.

This paper has been typeset from a $\text{\TeX}/\text{\LaTeX}$ file prepared by the author.