



HAL
open science

Combining multi-scale modelling methods to decipher molecular motions of a branching sucrase from glycoside-hydrolase family 70

Akli Ben Imeddourene, Jérémy Esque, Isabelle André

► **To cite this version:**

Akli Ben Imeddourene, Jérémy Esque, Isabelle André. Combining multi-scale modelling methods to decipher molecular motions of a branching sucrase from glycoside-hydrolase family 70. PLoS ONE, 2018, 13 (8), 25 p. 10.1371/journal.pone.0201323 . hal-01886490

HAL Id: hal-01886490

<https://hal.science/hal-01886490>

Submitted on 21 Jun 2019

HAL is a multi-disciplinary open access archive for the deposit and dissemination of scientific research documents, whether they are published or not. The documents may come from teaching and research institutions in France or abroad, or from public or private research centers.

L'archive ouverte pluridisciplinaire **HAL**, est destinée au dépôt et à la diffusion de documents scientifiques de niveau recherche, publiés ou non, émanant des établissements d'enseignement et de recherche français ou étrangers, des laboratoires publics ou privés.



Distributed under a Creative Commons Attribution 4.0 International License

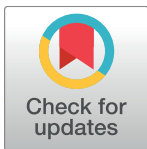
RESEARCH ARTICLE

Combining multi-scale modelling methods to decipher molecular motions of a branching sucrose from glycoside-hydrolase family 70

Akli Ben Imeddourene, Jérémy Esque, Isabelle André*

Laboratoire d'Ingénierie des Systèmes Biologiques et Procédés, LISBP, Université de Toulouse, CNRS, INRA, INSA, Toulouse, France

* isabelle.andre@insa-toulouse.fr



Abstract

Among α -transglucosylases from Glycoside-Hydrolase family 70, the ΔN_{123} -GB-CD2 enzyme derived from the bifunctional DSR-E from *L. citreum* NRRL B-1299 is particularly interesting as it was the first described engineered Branching Sucrase, not able to elongate glucan polymers from sucrose substrate. The previously reported overall structural organization of this multi-domain enzyme is an intricate U-shape fold conserved among GH70 enzymes which showed a certain conformational variability of the so-called domain V, assumed to play a role in the control of product structures, in available X-ray structures. Understanding the role of functional dynamics on enzyme reaction and substrate recognition is of utmost interest although it remains a challenge for biophysical methods. By combining long molecular dynamics simulation (1 μ s) and multiple analyses (NMA, PCA, Morelet Continuous Wavelet Transform and Cross Correlations Dynamics), we investigated here the dynamics of ΔN_{123} -GB-CD2 alone and in interaction with sucrose substrate. Overall, our results provide the detailed picture at atomic level of the hierarchy of motions occurring along different timescales and how they are correlated, in agreement with experimental structural data. In particular, detailed analysis of the different structural domains revealed cooperative dynamic behaviors such as twisting, bending and wobbling through anti- and correlated motions, and also two structural hinge regions, of which one was unreported. Several highly flexible loops surrounding the catalytic pocket were also highlighted, suggesting a potential role in the acceptor promiscuity of ΔN_{123} -GBD-CD2. Normal modes and essential dynamics underlined an interesting two-fold dynamic of the catalytic domain A, pivoting about an axis splitting the catalytic gorge in two parts. The comparison of the conformational free energy landscapes using principal component analysis of the enzyme in absence or in presence of sucrose, also revealed a more harmonic basin when sucrose is bound with a shift population of the bending mode, consistent with the substrate binding event.

OPEN ACCESS

Citation: Ben Imeddourene A, Esque J, André I (2018) Combining multi-scale modelling methods to decipher molecular motions of a branching sucrose from glycoside-hydrolase family 70. PLoS ONE 13(8): e0201323. <https://doi.org/10.1371/journal.pone.0201323>

Editor: Claudio M Soares, Universidade Nova de Lisboa Instituto de Tecnologia Quimica e Biologica, PORTUGAL

Received: May 25, 2018

Accepted: July 12, 2018

Published: August 1, 2018

Copyright: ©2018 Ben Imeddourene et al. This is an open access article distributed under the terms of the [Creative Commons Attribution License](https://creativecommons.org/licenses/by/4.0/), which permits unrestricted use, distribution, and reproduction in any medium, provided the original author and source are credited.

Data Availability Statement: All relevant data are within the paper and its Supporting Information files.

Funding: This work was supported by the French National Research Agency (ANR Project CARBUNIVAX, ANR-15-CE07-0019-01) (<http://www.agence-nationale-recherche.fr/>). IA was the funding recipient. The funders had no role in study design, data collection and analysis, decision to publish, or preparation of the manuscript.

Competing interests: The authors have declared that no competing interests exist.

Introduction

Sucrose-utilizing α -transglucosylases from Glycoside-Hydrolase family 70 (GH70) [1], are extracellular bacterial enzymes of high molecular weight, typically in the range of 120–300 kDa, that naturally synthesize from sucrose substrate a wide variety of linear and branched α -glucan polymers differing in terms of type of glucosidic linkages, degree and spatial arrangement of branches, molecular size and physico-chemical properties [2–4]. For instance, GTF180- Δ N synthesizes a dextran polymer composed mainly of α -1,6 glucosidic linkages, GTF-A produces reuteran, an α -1,4 linked glucan [5], and GTF-SI forms mutan, an α -1,3 glucopolymers [3]. Another type of glucansucrases, the so-called dextransucrases (DSR), catalyze the formation of dextrans composed of a linear chain mainly formed of α -1,6 linked glucans on which are branched glucosyl chains through various types of α -1,2, α -1,3, and α -1,4 linkages [4]. One of these enzymes, DSR-E from *L. citreum* NRRL B-1299 [6], has been extensively studied in our group, revealing very original catalytic properties as it is able to synthesize dextran with high amounts of rare and non-digestible α -1,2 branching linkages. Interestingly, sequence and structure analysis combined to biochemical characterization revealed that this enzyme is bifunctional as it is composed of two catalytic domains, namely CD1 and CD2, linked by a glucan-binding domain (GBD) [6]. The catalytic domain CD1, in combination with the GBD at C-terminal extremity, is responsible for the α -1,6 glucan formation while the catalytic domain 2, combined to its GBD in N-terminal, is exclusively in charge of α -1,2 glucosyl branching onto dextran [7]. Based on its unique properties, GBD-CD2 was reported as being the first engineered Branching Sucrase (BRS), not able to elongate glucan polymers [6,8]. These results paved then the way for the discovery through data mining of novel natural GH70 branching sucrases specialized in dextran branching via α -1,2 or α -1,3 osidic linkages [9–11]. Products of these branching sucrases have proven to be of economical relevance as the presence of rare α -1,2 linkage leads to a resistance of mammalian digestive enzymes for the branched product and thus favors the growth of beneficial bacteria of the gut microbiome [12–16]. The α -1,3 branched glucan also shows interesting properties, especially in the inhibition of bacteria such as *Salmonella* or *Escherichia coli* [17].

The structural common characteristics of clan GH-H, that gathers enzymes from GH13, GH70 and GH77 families, is the $(\beta/\alpha)_8$ catalytic barrel domain, which is bound to N- and/or C-terminal domains. The type and number of other domains differ for each type of GH-H enzyme, suggesting that additional domains determine the reaction specificity of GH-H enzymes [18]. Nonetheless, the reaction specificity is largely determined by the catalytic domain. Moreover, N and C-terminal domains have many carbohydrate binding pockets that provide the enzymes with carbohydrate binding functionality [19–21]. Among the three-dimensional structures of sucrose-active transglucosylases from GH70 family available to date (GTF180- Δ N from *L. reuteri* (pdb entry: 3klk [22]); GTF-SI from *S. mutans* (pdb entry: 3aie; [23]); GTFA- Δ N reuteransucrase from *L. reuteri* (pdb entry: 4amc; [24]; DRS-M from *L. citreum* (pdb entry: 5lfc; [20]), that of the truncated variant Δ N123 GBD-CD2 (pdb entry: 3ttq; [7], 4ttu [25]) is the only one of a branching sucrase. In spite of their distinct reaction specificity, glucansucrases and branching sucrases share a common architectural organization composed of five domains, named A, B, C, IV and V, that altogether form an unusual global U shaped fold [7] (Figs 1 and 2). The first domain is the so-called domain A, which is composed of a $(\beta/\alpha)_8$ barrel that harbours the catalytic site. Domain B is located at the top of domain A and it consists of five or six antiparallel β -strands. Domain C, located at the bottom of the catalytic domain, forms eight antiparallel β -strands with a Greek key motif. Out of the five domains, it is the only one formed by a contiguous polypeptide stretch whereas all four remaining domains are built up of two discontinuous segments of the N- and C-terminal

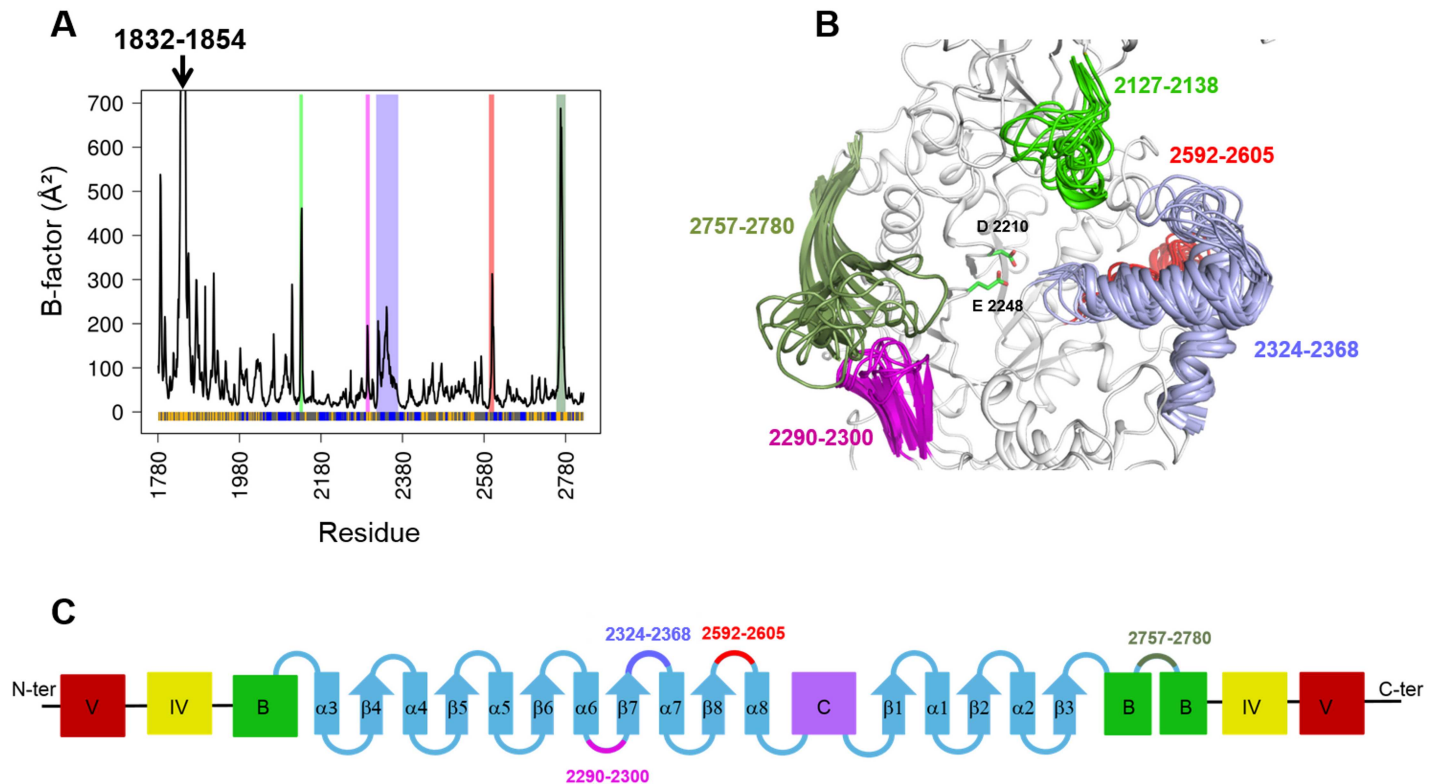


Fig 1. B-factors and flexible structural motifs along MD simulation. Panel (A) represents the average fluctuations of C α atoms represented by B-factors per residue calculated along MD simulation of Δ N₁₂₃-GBD-CD2. The strips in the background of the B-factor lines highlight structural motifs surrounding the active site, represented using the same color code on the panel (B), which represents the superimposed views of ten frames taken along the MD simulation. The highlighted regions are loop 2127–2138, helix-loop-helix motif corresponding to region 2324–2368 and its adjacent loop 2592–2605, then the 2290–2300 and 2757–2780 β -hairpin motifs in green, light blue, red, magenta and forest green, respectively. The shown side chains represent the two catalytic residues: the nucleophile D2210 and the acid base E2248. The panel (C) represents a schematic view of the five domains of Δ N123-GBD-CD2; detailed (β/α)₈ barrel domain A with cyan color (helices represented as rectangles and β -sheets as arrows), the domains B, C, IV and V in green, magenta, yellow and red, respectively. The structural motifs surrounding the active site are represented with the same color code than panel (B).

<https://doi.org/10.1371/journal.pone.0201323.g001>

polypeptide chain. Domain IV is positioned between domains B and V, respectively. Its function is still obscure, except providing a linker between the catalytic core and the domain V [22]. Finally, domain V, also called Glucan Binding domain (GBD), is built up of an N-terminal segment alone in the case of Δ N123-GBD-CD2 or of both N- and C-terminal segments in other GH70 family members. Deletion of domain V has been shown to yield a fully active enzyme but altering the size of synthesized polymers in the case of DRS-S [26], GTF-180- Δ N [27], and DRS-M [20]. Conversely, truncation of domain V in GTF-A reuteransucrase from *Lactobacillus reuteri* 121 did not affect significantly size of polymer products [5]. However, the removal of Δ N123-GBD-CD2 glucan binding domain leads to an unstable enzyme displaying a very low activity toward sucrose [8]. Although the mechanism through which domain V assists catalysis is still poorly understood, it plays evidently a significant role in the control of oligosaccharide product length. Ito *et al* proposed that domain IV could serve as a structural hinge swinging the domain V toward and away from the catalytic domain [23]. This hypothesis was supported by the structure of GTF-180 solved in two distinct conformations [28]. Additionally, Small Angle X-ray scattering experiments suggested a bending of domain V in solution for DSR-M and GTF-180- Δ N to adopt a “horseshoe” shape [20,28]. Although evolutionary pathway that led to the structural organization of GH70 glucansucrases remains

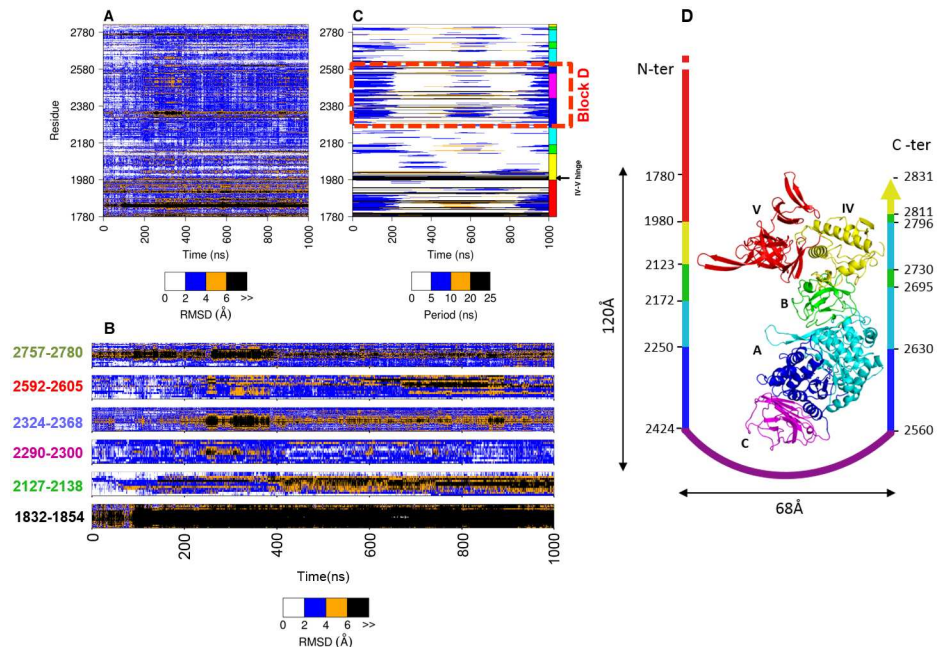


Fig 2. RMSD per residue and wavelet analysis. Residual RMSD (A) and wavelet (C) analysis for each amino acid residue as function of MD simulation time. The bottom legends show the color used to discriminate discrete RMSD values in Angström (panel A) or wavelet period in nanoseconds (panel B). The right-edge strip indicates the different structural domains that compose ΔN_{123} -GDB-CD2 using the same color code as in panel D, the hinge between domains IV-V and the block D are highlighted on the right side. The bottom plot (B) shows an enlarged view of residual RMSD of flexible motifs surrounding the active site: loop 2127–2138, helix-loop-helix motif corresponding to residues 2324–2368 and its adjacent loop (residues 2592–2605), then the β -hairpin motifs composed respectively of residues 2290–2300 and 2757–2780, and the β -hairpin 1832–1854. The loop identifiers are colored in green, light blue, red, magenta, forest green and black respectively. The panel (D) highlights the five structural domains of ΔN_{123} -GDB-CD2 with different colors: domains B, C, IV and V in green, magenta, yellow and red, respectively, the domain A is represented with two colors; blue for the block D and cyan for the rest of the domain. A schematic representation of ΔN_{123} -GDB-CD2 structure is shown with delimitation of the different domains forming the U-shape.

<https://doi.org/10.1371/journal.pone.0201323.g002>

unclear, and in particular regarding the insertion of the enzyme precursor into domain V, it has been reported that domain V in ΔN_{123} -GDB-CD2 shows sequence and structural similarity with the choline-binding domain of *Streptococcus pneumoniae* LytA [29]; 29% identity; rmsd of 2.1 Å for 106 C α atoms [22].

Although very appealing on a biotechnological point of view, detailed investigation and description of the structural organization and the functional role of macromolecular motions of these multi-domain enzymes are still missing to provide a comprehensive understanding of the enzyme reaction. Investigation at atomic level and in real time of macromolecular motions remains challenging for biophysical methods, although real breakthroughs have been achieved in the last years using a combination of different techniques (NMR, FRET, . . .) [30–34]. To overcome the lack of experimental information, molecular modelling techniques, such as molecular dynamics (MD) simulations, Normal Mode Analysis (NMA) and Essential Dynamics Analysis (EDA), remain the best way to access detailed dynamic information on macromolecular systems, in particular when large molecular systems and long timescale protein motions are considered [35,36].

Along this line, we report here for the first time the computational investigation of one member of GH70 family, the branching sucrose ΔN_{123} -GDB-CD2, based on a combination of large scale MD simulations at the microsecond time range, NMA and EDA. This work

provides a detailed picture at atomic level of the hierarchy of motions occurring along different timescales and how they are correlated in order to better understand their potential role on the reaction mechanism and substrate recognition of branching sucrases.

Results and discussion

Convergence of large-scale molecular dynamics simulation on ΔN_{123} -GBD-CD2

To study dynamics of ΔN_{123} -GBD-CD2, we performed an MD simulation of 1 μ s using the updated protein and glycan force fields. The whole system consisted of the protein, explicit representation of the solvent, and counterions. To collect statistics and ensure reliability of observed behaviours, MD simulations are usually run several times using different starting velocity distributions. However, in the present case, the large size of the ΔN_{123} -GBD-CD2 simulated system (136 311 atoms for the whole system) and the simulation time length (μ s range) required to observe large-scale motions prevented us from repeating the simulations. To circumvent these limitations, convergence evaluation by different types of methods is generally required to ensure that an equilibrium state has been reached. Among these methods, Principal Component Analysis (PCA) is commonly used to evaluate the convergence of the conformational coordinates from MD simulations of proteins [37] or DNA [38], from replica exchange molecular dynamics [39], and from accelerated molecular dynamics [40]. The overlap of the principal component histograms is usually used to test the convergence of the MD simulation. This method is generally efficient to evaluate convergence of short simulations. For long MD simulations, the Kullback-Leibler Divergence (KLD), which is a measure of how two probability distributions overlap, performs usually better [40]. Therefore, considering the μ s scale of the MD simulation on ΔN_{123} -GBD-CD2, the KLD appeared more appropriate to quantify the convergence as a function of the simulation time using the Principal Component histograms corresponding respectively to the first or the second half of the trajectories (1 to 500 ns vs 500 ns to 1 μ s). The use of the two halves of the MD simulation was driven by the considerable computing needs required to carry out additional MD simulations at μ s scale and supported by previous reports on various biological systems that compared the two halves of an MD simulation to evaluate the convergence of the simulation [37,41]. S1 Fig shows that KLD for the 3 first PC projections accounting for $\sim 58\%$ of the total motion reaches the equilibrium and remains around 0.03, indicating the reproducibility of the conformational space exploration on the two halves of 1 μ s MD simulation, and ensuring a reliable sampling.

As a check of the global dynamics evolution of the enzyme structure during the course of the MD simulation, the time evolution of the heavy atom RMSD resulting from alignment of the MD frames with respect to the X-ray structure (PDB code: 3TTQ) was calculated after least square fit (S2 Fig). The profile corresponding to the whole enzyme (S2 Fig, black line) indicates that during the first 100 ns of the MD trajectory, the RMSD fluctuates moderately ($\sim 2.5 \text{ \AA}$) from the X-ray structure. For the rest of the simulation, it increases up to $\sim 4 \text{ \AA}$, reaching a spike to $\sim 5 \text{ \AA}$ during a few ns. These results indicate that the enzyme structure has undergone significant conformational changes during the course of the simulation. A detailed analysis of the simulation at molecular level showed a particularly high mobility of domain V, which is clearly illustrated by the decrease of RMSD values when excluding domain V in the calculation (S2 Fig, red line). In that case, the RMSD never exceeds 2.3 \AA from the X-ray reference structure and it remains constant $\sim 1.8 \text{ \AA}$, suggesting that no important conformational change occurs. These results clearly demonstrate that domain V is by far the most flexible region in ΔN_{123} -GBD-CD2, what was already experimentally suggested by SAXS experiments carried

out with homologous GTF-180- Δ N enzyme for which domain V was seen pivoting between elongated and compact conformations [28].

Local dynamics and loop flexibility of Δ N123-GBD-CD2 during the course of MD simulation

With the aim of investigating in details the local flexibility of the different domains of the enzyme, the B-factors were calculated along the MD trajectory on the basis of the Root Mean Square Fluctuations (RMSF) (Fig 1A). Overall, the B-factors calculated on enzyme C α atoms from simulation frames were found to be in good agreement with the B-factors derived from X-ray structure (Pearson correlation coefficient of 0.71). Analysis showed that globally, domain C is the most stable domain while domain V is by far the most flexible region. As expected, the highest mobility is observed for the N-ter region 1832–1854, corresponding to the β -hairpin motif of domain V and for which the central turn region was unresolved in Δ N₁₂₃-GBD-CD2 X-ray structures crystallized as a unique molecule in the asymmetric unit (S1 Table; pdb entries: 3TTQ [7] and, 4TTU, 4TTV and 4TVC [25]). Only in the case of an asymmetric unit containing four molecules, where each domain V is constrained by the C-ter domain of the neighbouring molecule, this region was structurally resolved (S1 Table; pdb entry:3TTO [7]). The domain IV presents moderate continuous fluctuations except for the loop 2105–2114. The B-factor values of amino acid residues from the (β/α)₈ catalytic barrel (domain A) are variable with an alternation of rigid and flexible regions. Four flexible structural motifs surrounding the catalytic pocket and belonging to the domain A are identified in the B-factor plot (Fig 1A): the 2290–2300 and 2757–2780 β -hairpin motifs, that interact with each other via their central loops, the 2324–2368 helix-loop-helix motif, also called subdomain H1-H2 [7], and its adjacent loop 2592–2605 (Fig 1B). The B-factor plot revealed another highly flexible loop corresponding to residues 2127–2138 located at the top of the active site, and belonging to the N-terminal part of domain B (Fig 1B). Interestingly, the general relationship between the flexibility of the residues surrounding the active sites and promiscuity of enzymes, notably of ancestral enzymes, was reported in recent years [42–45]. In the case of Δ N123-GBD-CD2, one could assume that flexibility of the loops surrounding the active site could thus be related to the tremendous promiscuity observed for the enzyme toward the acceptor substrate. Indeed, in addition to the glucosylation of dextran chains, its natural acceptor substrate, Δ N123-GBD-CD2 enzyme has been shown to be able to glucosylate a variety of exogenous molecules such as a lightly protected disaccharide [46] or flavonoids [47]. Furthermore, the identified flexible loops surrounding the active site are believed to be non-essential for the catalytic machinery or the protein folding, and could thus be mutagenesis targets of interest to enlarge the repertoire of tolerated acceptor substrates without perturbing enzyme catalysis.

While RMSF (or B-factors) provide crucial information regarding the flexibility and the atomic fluctuations averaged along the MD simulation, notably to characterize movements of structural domains, they fail to provide insight on the time evolution of motions and the nature of the movement, such as Brownian or essential motions. Therefore, other analyses are required to capture the sequence and order of events occurring during MD simulation and to probe the dynamics amplitude and periodicity of flexible structural motifs of Δ N₁₂₃-GBD-CD2, especially loops surrounding the catalytic gorge. The evolution of residual RMSD for each amino acid residue along simulation time is shown in Fig 2A. It reveals that residue motions mostly fluctuate with amplitudes between 2 to 4 Å (blue color) from their average position along the MD simulation, with the exception of domain V that is found highly flexible along the simulation, notably the 1832–1854 β -hairpin motif, with many bands on the graph

corresponding to the highest RMS deviation ($> 6\text{\AA}$, colored in black in Fig 2B). The flexible structural elements located nearby the catalytic pocket identified by atomic fluctuation analysis in Fig 1 exhibit variable dynamic rates along the trajectory (Fig 2B). The RMSD of loop 2127–2138 belonging the domain B appears stable for the first 50ns of the trajectory, then oscillates essentially between 2 to 6\AA throughout the rest of the simulation time. Likewise, the helix-loop-helix motif comprising residues 2324–2368 and the loop 2592–2605 appear stable at the beginning of the simulation until $\sim 250\text{ns}$, with a moderate deviation ($0\text{--}4\text{\AA}$), pursued by an increase of the RMSD value particularly in region 2324–2368 for the next 150ns. The RMSD of the β -hairpin motif composed of residues 2290–2300 remains around 3\AA during all the simulation, while the neighbouring β -hairpin motif formed by residues 2757–2780 is highly flexible with the same amplitude $\sim 6\text{\AA}$ over the entire trajectory. Interestingly, for these regions, the central residues (black bands in the middle) (Fig 2B) generally show the highest RMSD values, indicating that they are more flexible than the extremities.

To identify physically significant events occurring in MD simulations, not always easy to detect in the RMSD plot per-residue, we performed a Morlet wavelet analysis [48,49] that enables to highlight with higher sensitivity the periodic oscillations observed along the MD simulation. Besides specifying the temporal location of significant events, wavelet maps provide the timescale of those events. Large-scale motions are associated with low-frequency motions, while small scale motions are associated high-frequency motions. The examination of the Morlet oscillation map of ΔN_{123} -GBD-CD2 (Fig 2C) revealed that events occurring between 0 and 10ns periods (in white and blue colors) dominate the plot. Interestingly, the region corresponding to the bottom part of the catalytic pocket, located between residues 2250 and 2630; so-called block D in Fig 2C (Block D: Down active site region comprising the 2250–2424 and 2560–2630 stretches of domain A and the entire domain C), behaves as one global wavelet spectra shape, i.e. events of 5-10ns period occurring during the first 200ns, then again in the middle of the simulation (between 500 and 700ns), and finally, during the last 100ns. Wavelet shape of domain B follows a similar behaviour.

Interestingly, the wavelet spectra of the upper part of the catalytic pocket in domain A (coloured in cyan in Fig 2B and 2D) is dominated by a fast dynamics period (in white color in Fig 2B) and thus differs significantly from the wavelet of the bottom part (in blue color in Fig 2B), suggesting a singular twofold behaviour of the catalytic domain A. Despite differences observed in the residual RMSD of domains IV and V, the wavelet map reveals a certain relationship between the dynamics of the two domains with continuous waves of slow events (periods between 20 and 25ns, black bands) on many residues from both domains. Noteworthy, the Wavelet analysis clearly exposes the hinge region between domains IV and V (Fig 2B) suggested earlier by Dijkstra and coworkers from X-ray structures of the GTF-180 solved in different conformations [28].

Morelet wavelet analysis appears here very efficient to detect important events in MD simulations that cannot be captured by traditional RMSD, or atomic fluctuations, and further provides periodic motion correlations between the different protein domains. However, Morelet wavelet analysis is unable to give the direction of the domain motions and thus their correlation, what is essential for understanding the conformational changes in proteins.

Cross correlation of motions within ΔN_{123} -GBD-CD2

Correlated motions examine the relative motions of pairs of heavy atoms (or structural domains) during a simulation and identify pairs moving either in a correlated or anti-correlated fashion, what provides information regarding parts of the protein moving in tandem. The quantification of motion correlations between heavy atoms moving under multi-modal

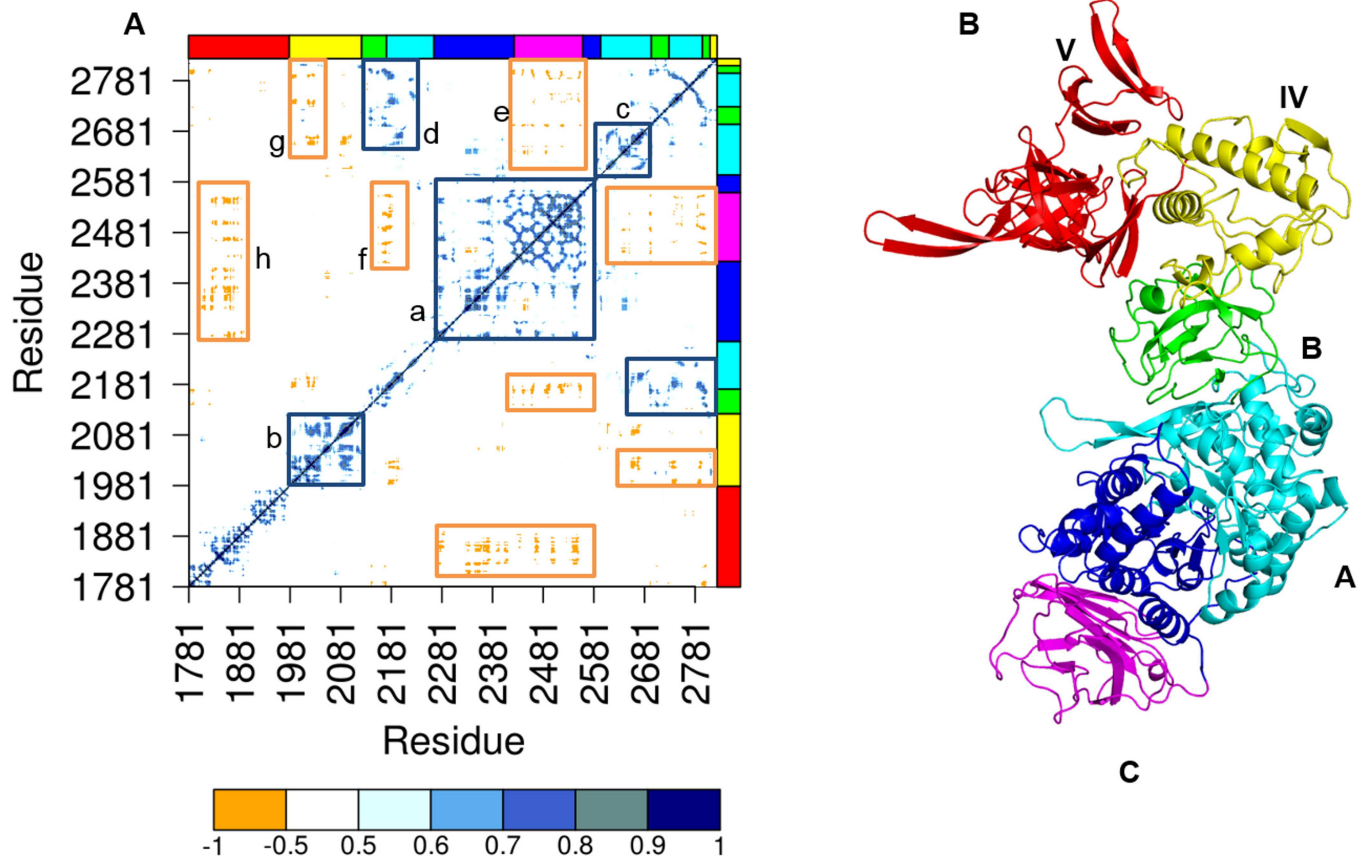


Fig 3. Dynamical cross correlation (DCC) analysis. (A) DCC map of ΔN_{123} GBD-CD2 calculated from 1 μ s MD simulation. The color scale from orange to blue corresponds to discrete correlation coefficient values (DCC) from -1.0 to +1.0. The different structural domains of ΔN_{123} GBD-CD2 are highlighted by strips on top and left side and using the same color code as in panel (B). Regions marked by the rectangles a-g are discussed in the main text. The panel (B) highlights the five structural domains of ΔN_{123} -GDB-CD2 with different colors: domains B, C, IV and V in green, magenta, yellow and red respectively, the domain A is represented with two colors; navy blue for the block D and cyan for the rest of the domain A.

<https://doi.org/10.1371/journal.pone.0201323.g003>

distributions provides the information on the motion direction vector, lacking in the Morelet analysis. In this approach, we first built a covariance matrix of atomic coordinates sampled from a MD trajectory, followed by the calculation of mean correlation coefficients. The cross correlation map of motion vectors calculated for heavy atom of ΔN_{123} -GBD-CD2 along the 1 μ s MD simulation is shown in Fig 3A. In addition, the map also reveals the motion direction of the different structural domains along the MD trajectory. Analysis of the map indicates that domain C is the most internally correlated. The domain C also appears highly correlated to the bottom region of the active site from domain A, which together form the block D, corroborating the wavelet spectra of this region (Fig 3A, rectangle a). The block D is highly anti-correlated with the domain V (Fig 3A, rectangle g), what indicates an opposite motion direction of these two domains during MD simulation, and suggesting the existence of a global motion of domain V toward and away from the active site, in agreement with prior reports on GTF-180 [28]. Similarly to domain C, domains IV (rectangle b in Fig 3A) and the upper catalytic site of domain A (rectangles c and d in Fig 3A) undergo stronger intra-correlated motions than the ones observed for the domain V. Like domain V, the upper part of the catalytic site (rectangles e and f in Fig 3A) moves in the opposite way to the block D, reinforcing the existence of two-fold dynamical direction of the domain A.

Normal mode analysis and essential dynamics reveal new insights on global domain motions of ΔN_{123} -GBD-CD2

Our goal here was to determine the global rigid body movements of the various domains from ΔN_{123} -GBD-CD2. Normal Mode Analysis (NMA) and Essential Dynamics Analysis (EDA) are the major computational methods used to study the large-scale motions in biological molecules. The calculated modes (NMA or EDA) provide information on all the possible ways that a macromolecule can move, without however indicating how the molecular structure really moves in a given environment. It is thus not possible to determine which modes are functionally relevant from a set of calculated ones [50], requiring therefore experimental data to sort out representative movements [51,52]. The analysis of the eigenvalue dispersion of NMA and EDA shown in S3 Fig reveals the existence of two regimes of eigenvalue distribution: the three first modes constitute the slowest motions and the other modes correspond to the intermediate dynamics. The same discrimination between the contribution of the different modes to the global motion was done by Bahar and coworkers [53]. Remarkably, the two methods (NMA and EDA) present the same intercept of eigenvalue distribution, proving that the amplitude of the motions driven by normal modes and essential dynamics are nearly similar in our study.

To ensure the experimental relevance of NMA and EDA sampling, a comparative analysis of B-factor values per residue was carried out between these computational methods and eight crystallographic structures of the ΔN_{123} -GBD-CD2 available in the Protein DataBank (S1 Table). Interestingly, the calculated atomic fluctuations of $C\alpha$ for the three first modes of NMA or EDA (more than 50% of total motions for both), when considered together, have a good correlation with respect to the crystallographic B-factors, i.e. R-Pearson coefficients of 0.68 and 0.76 for NMA and EDA, respectively (Fig 4). Moreover, including remaining modes did not alter the general shape of the B-factor profile, but decreased the correlation coefficient.

Compared to experimental values, calculated atomic fluctuations from NMA are relatively poorly reproduced for domains IV and V with an R-Pearson coefficient of 0.53, while the

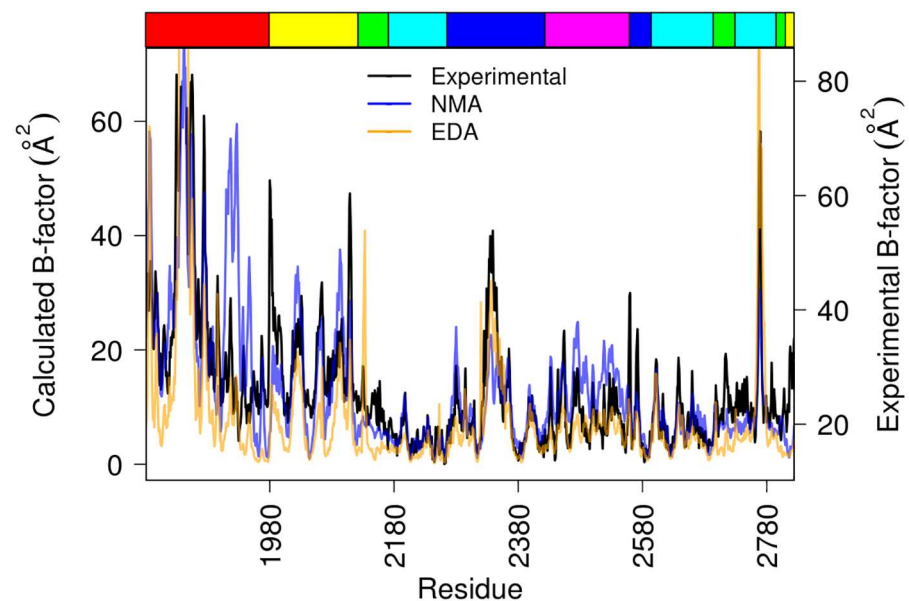


Fig 4. Comparison between computed and experimental B-factors. B-factors were calculated from the three first modes of NMA (blue), and EDA (orange) and plotted against experimental B-factors derived from X-ray structures of ΔN_{123} -GBD-CD2 (black) as a function of amino acid residues. The top edge strip shows the different domains of ΔN_{123} -GBD-CD2 using the same color code as in Figs 2 and 3.

<https://doi.org/10.1371/journal.pone.0201323.g004>

correlation coefficient remains unchanged ($R = 0.78$) for EDA. The poor reproducibility of experimental data by normal modes comparatively to essential modes could be due to the method bases. Indeed, motions resulting from NMA represent only the harmonic dynamics in vacuum and thus do not include the solvent surrounding the protein (water molecules and ions), whereas EDA derived from MD simulation takes into account periodic boundary and solvent effect [54], capturing the anharmonicity of the protein dynamics. From NMA results, the most divergent region is the edge β -hairpin of the solenoid fold from domain V, situated between residues 1930 and 1956, probably due to the fact that the direction of the motion may vary along the conformational change (anharmonicity), what is poorly reproduced by global harmonic normal mode dynamics [52]. The comparison of crystallographic B-factors and those derived from EDA or NMA confirms the good sampling of the conformational space by the three first modes, which cover 58% and 71% of eigenvalues from EDA and NMA, respectively, attesting of the robustness of the methods to compute rigid body motions.

More detailed information on the internal flexibility of the structural domains may be acquired by examining the variations in the backbone dihedral angles resulting from the low frequency normal modes [55–57]. The calculation of the ψ and Φ backbone angles absolute deviation from the average structure of the three first modes shown in the Fig 5 enables to clearly pinpoint the pivots of rotating domains in ΔN_{123} -GBD-CD2. Domain B displays the most variable torsional backbone angles, what supports the assumed role as hinge of this domain. The pivot region located between domains IV and V is situated between residues Q1956 and T2004. Inspection of the hinge residues reveals that Q1956 acts as the hinge of the edge β -hairpin of the solenoid fold from domain V described above, while the T2004 ensures a local dynamics of the loop connecting IV and V domains (Fig 5C). Remarkably, a hinge residue (N1985) comparable to that found in GTF-180 (residues D794-E795) [18,28] is identified in ΔN_{123} -GBD-CD2. Interestingly, the most stable backbone torsion angles are seen in the block D, what suggests a quasi-rigid behaviour [58] of the block, and confirms the earlier results derived from MD simulation analysis.

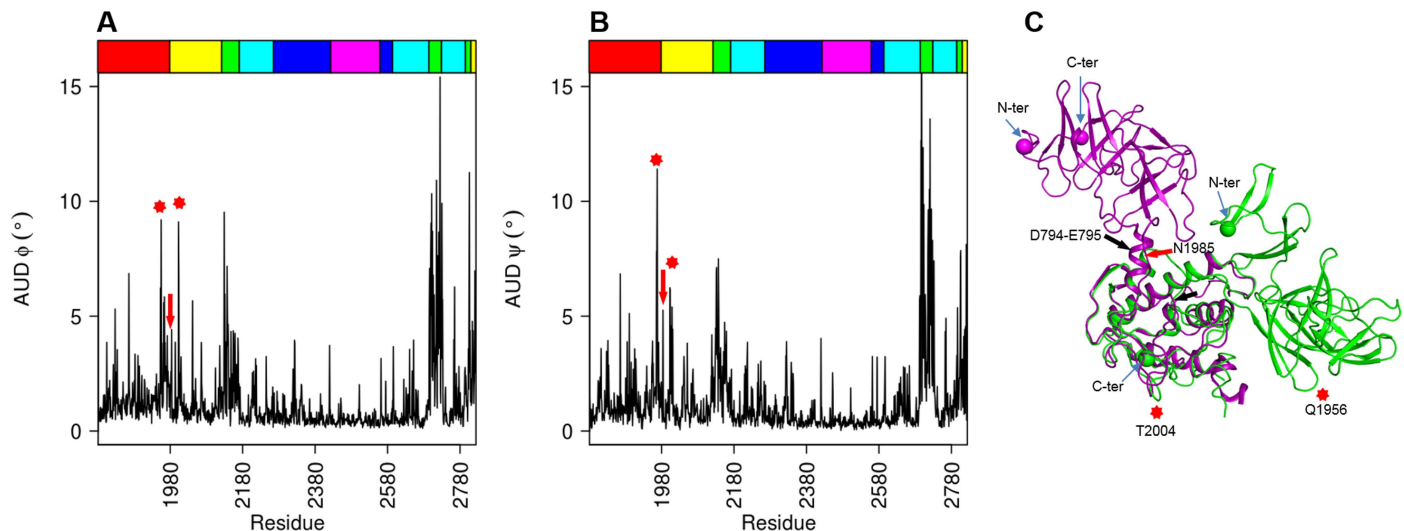


Fig 5. Average unsigned dihedral backbone angles. The panels (A, B) illustrate the average unsigned (absolute) deviation (AUD) of Φ , Ψ angles, respectively, resulting from the three first modes of NMA. The top edge strip shows the structural domains of ΔN_{123} -GBD-CD2 using the same color code as in Figs 2 and 3. The red stars indicate the hinge regions Q1956 and T2004 from N-ter to C-ter respectively, the red arrow show the N1985 hinge residue. The panel (C) represents the superimposition of IV and V domains of the GTF180- ΔN (pdb entry: 3KLL) in magenta and ΔN_{123} -GBD-CD2 (pdb entry: 3TTQ) in green. The spheres show the N-ter and C-ter residues of each enzyme. The location of hinge regions discussed in this paper are indicated by the red arrow and stars. The black arrow indicates the hinge region (D794-E795) identified in GTF180- ΔN [18,28].

<https://doi.org/10.1371/journal.pone.0201323.g005>

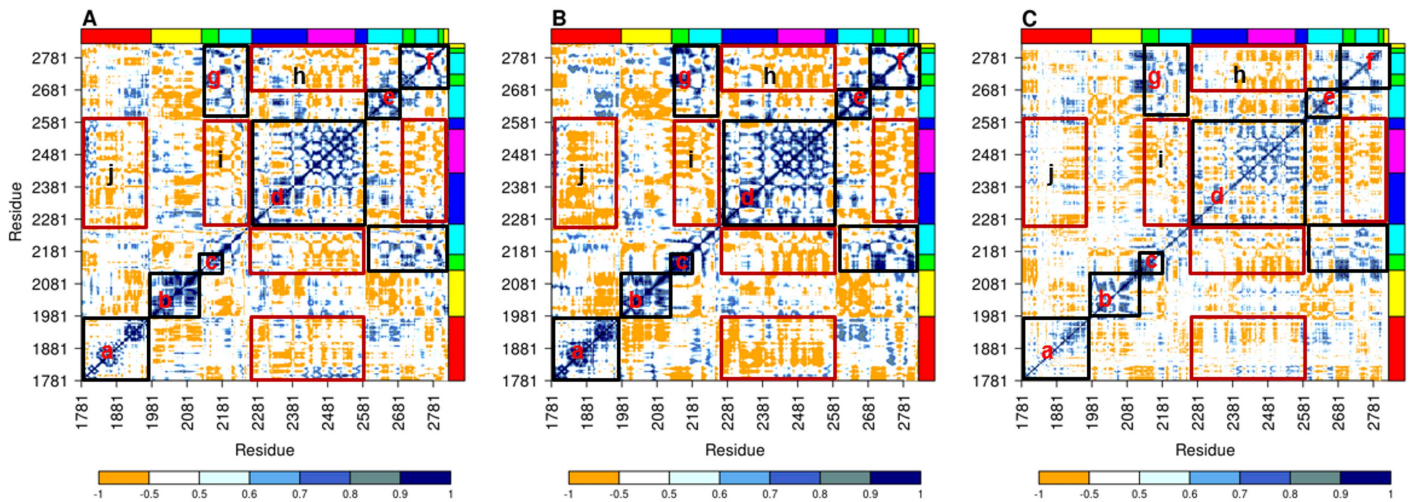


Fig 6. Dynamical cross correlation from theoretical methods against experimental data. DCC map of ΔN_{123} -GBD-CD2 calculated from EDA (A), NMA (B), and derived from X-ray (C). The color scale from orange to blue corresponds to discrete correlation coefficient values (DCC) from -1.0 to +1.0. The structural domains of ΔN_{123} -GBD-CD2 are shown using the same color code as in Fig 3. Parts marked by the rectangles a-j are discussed in the main text.

<https://doi.org/10.1371/journal.pone.0201323.g006>

To explore further the nature of the global movements taking place within the enzyme structure, we performed an inter-residue correlation analysis from X-ray structures or from normal mode dynamics. This latter was widely used to analyze in more details the correlated motions occurring between residues within macromolecules [53,54,56,59,60]. Worth pointing, dynamical inter-residue correlation heat maps represented in Fig 6 show a remarkable agreement between the cross correlation motions calculated from the three first modes of EDA and NMA, or derived from X-ray structures (Table 1), providing a high level of confidence in the dynamics of structural domains coming out of these analyses. Furthermore, the heat maps clearly outline the various hinge regions of collective motions experienced by the enzyme, which are confirmed by the average unsigned deviation of backbone Ψ and Φ torsions angle derived from the MD average structure of ΔN_{123} -GBD-CD2.

For all analyses (EDA, NMA and X-ray), all domains display a positive intra-domain correlation motion along the diagonal (a, b, c, d, e, and f in Fig 6) indicating that residues that belong to a same domain, and that are continuous in the protein sequence, move in general along the same direction. Some domains present stronger intra-domain correlated motions (beyond the diagonal) such as IV and C (b and upper part of rectangle d in Fig 6), and are conserved according to three methods. Conversely, domain A presents some differences of motion correlation depending on the method, mostly in the rectangle d where more anti-correlated motions are viewed for EDA and X-ray analysis. Moreover, domain A shows a net split into two regions, corresponding respectively to the bottom part of the catalytic gorge highly correlated to domain C, and which form together the block D (rectangle d in Fig 6), and the upper part of the active site (rectangles g, e and f in Fig 6). Indeed these two regions display anti-

Table 1. Pearson correlation coefficient (PCC) between DCC maps. PCC values were calculated between pairs of DCC maps shown in Fig 6.

	NMA	EDA	X-ray
NMA	1	0.87	0.75
EDA	--	1	0.70
X-ray	--	--	1

<https://doi.org/10.1371/journal.pone.0201323.t001>

correlated motions with each other (rectangles i and h in Fig 6) exposing here again the two-fold behaviour of the catalytic domain A detected in earlier analyses. In contrast to intra-domain global dynamics, the cross correlation heat map reveals that some domains are completely independent of each other (negatively signed cross correlations) such as the block D versus the domain V (rectangle j in Fig 6). Detailed analysis of the heat map shows a fine-tuned partitioning of the dynamics of ΔN_{123} -GBD-CD2 that goes beyond the organization of the enzyme in five structural domains based on secondary and tertiary structural motifs defined earlier by X-ray crystallography studies [7].

We then examined at three-dimensional level the significance of these correlated motions. The three universal low frequency normal modes or essential dynamics corresponding to large scale collective motions detected for ΔN_{123} -GBD-CD2 are shown in Fig 7. The observed movements are associated to twisting, bending and wobbling modes [36,50,61]. The twisting mode is mainly characterized by a counter clockwise rotation of the domains A and C, and in opposite direction of domains IV and V; the bending mode corresponds to the movement of domains IV and V with respect to the domains A and C; the wobbling mode involves nearly all the protein with the exception of domain B. Remarkably the order of the occurrence of three first modes differs depending on the method (NMA or EDA). The order of three lowest modes is relayed to the initial coordinates used for NMA calculation [60] or EDA [62]. Taken together, the three lowest modes provides a comprehensive picture of the collective motions experienced by ΔN_{123} -GBD-CD2. Its behaviour is similar to that of proteins composed of two globular domains linked by a flexible hinge [50]. In the case of ΔN_{123} -GBD-CD2, the flexible hinge linker is the domain B, which connects two globular blocks: the first block composed of domains A and C, the second block comprised of domains IV and V (Fig 7). Whereas the hinge region linking domains IV and V (residue N1985) was experimentally proposed in homologous GTF180 enzyme [28], the function of domain B as a hinge cleft was yet unreported to our knowledge, and inaccessible via conventional simulations.

Effect of sucrose binding on the local dynamics of ΔN_{123} -GBD-CD2

To explore the potential effect of sucrose binding on the conformational space exploration, dynamics, and flexibility of structural motifs surrounding the active site of ΔN_{123} -GBD-CD2, we performed an MD simulation of 100ns of the enzyme in complex with sucrose, the donor substrate. In the absence of an experimental structure of ΔN_{123} -GBD-CD2 in complex with sucrose, only MD simulations enable to investigate conformational rearrangements occurring upon sucrose binding and predict contribution of amino acid residues from the catalytic pocket to the productive recognition of sucrose. The enzyme:sucrose complex was obtained by superimposing ΔN_{123} GBD-CD2 with GTF-180, the high conservation of residues interacting with the sucrose from GTF-180 [22] in ΔN_{123} -GBD-CD2 ensures the high confidence of the sucrose docking. The monitoring of the RMSD (S4 Fig) of the enzyme and the ligand along the 100ns trajectory provides information regarding the stability of the complex and the proper binding of sucrose in productive conformation. Interestingly, like for the free enzyme MD simulation, the RMSD plot shows that the domain V remains the most flexible region within the complex system. In order to compare behaviour of ΔN_{123} -GBD-CD2 in free form and in complex with sucrose, reduction of the number of frames and their dependence on the read-out time step and the length of simulation is required [63]. Free energy landscape based on the kernel density estimation of the two first principal components is often used to extract most relevant structures from MD simulation [63–67]. The free energy landscape maps calculated for the free enzyme and enzyme:sucrose complex reveal in both cases only one energetic basin (Fig 8). While the ordinate coordinate of the energetic basins, corresponding to second

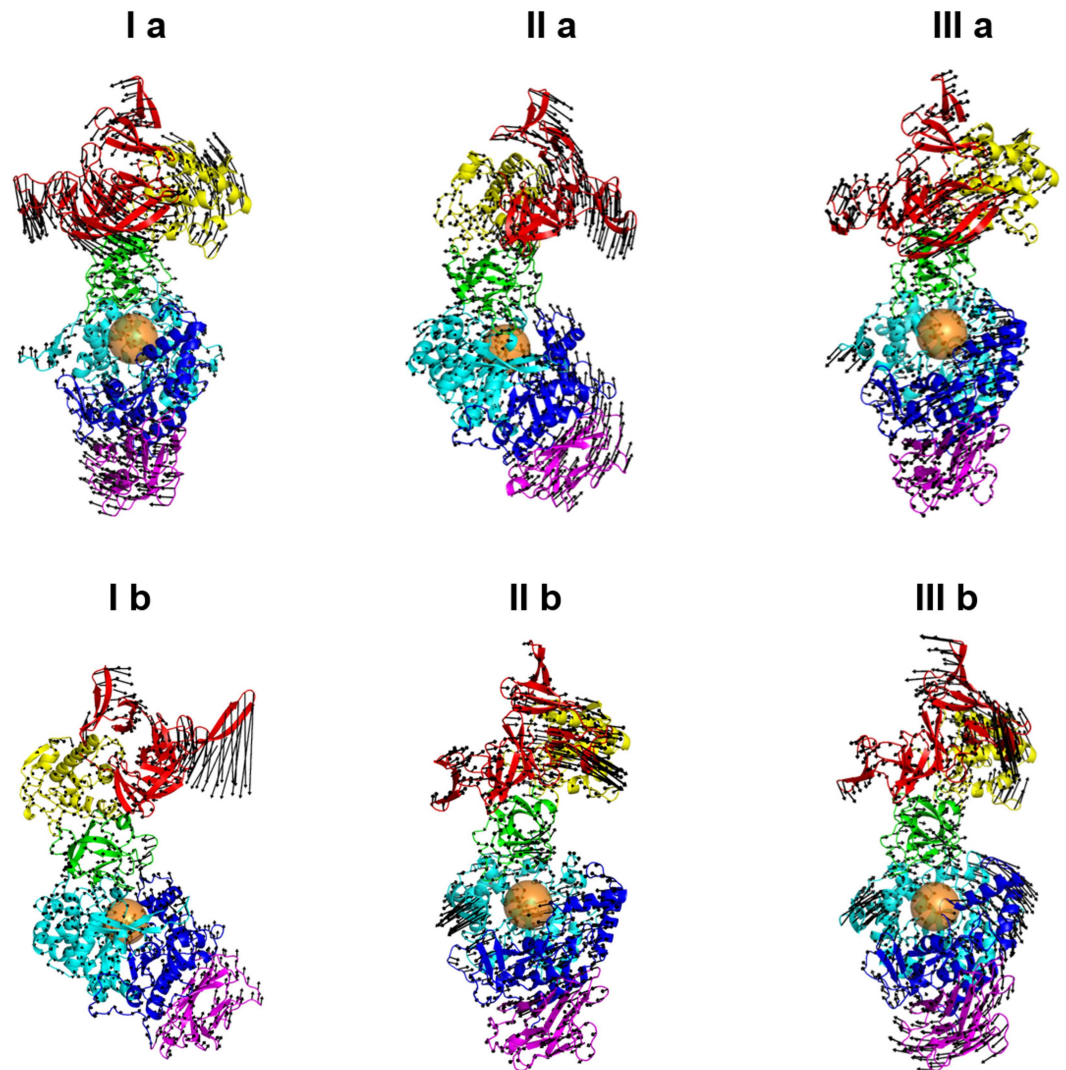


Fig 7. Large scale collective motions from normal or essential dynamics modes. View of the three first normal modes of ΔN_{123} -GBD-CD2, corresponding respectively to the twist (I a), bend (II a) and wobble (III a) modes and three first essential dynamics modes corresponding respectively to the bend (I b), wobble (II b) and twist (III b). The black arrows point to the motion direction for each mode and the length of the arrows illustrates the amplitude of the movements. The orange spheres indicate the location of the catalytic gorge.

<https://doi.org/10.1371/journal.pone.0201323.g007>

principal component (Wobbling mode) and the third PC corresponding to the twisting mode (S5 Fig), remains similar in the two simulations, the first eigenvector coordinates representing the binding mode in PCs shifts to negative values in the MD simulation of the enzyme: sucrose complex. The consequences of the basin displacement on the global motion of the enzyme is discussed in the next section.

The comparison of the clusters taken from the energy landscape basins ($\Delta G < 100 \text{ J. mol}^{-1}$) of the free and complex simulations shows that the calculated B-factors (S6 Fig) are highly similar, with a very good Pearson correlation coefficient of 0.95. The five highly flexible structural motifs surrounding the catalytic site, identified in the MD simulation of the free enzyme (Fig 3), have different behaviour in the presence of sucrose. Whereas, the 2290–2300 and 2757–2780 β -hairpins undergo same dynamics amplitude in both MD simulations, the three other

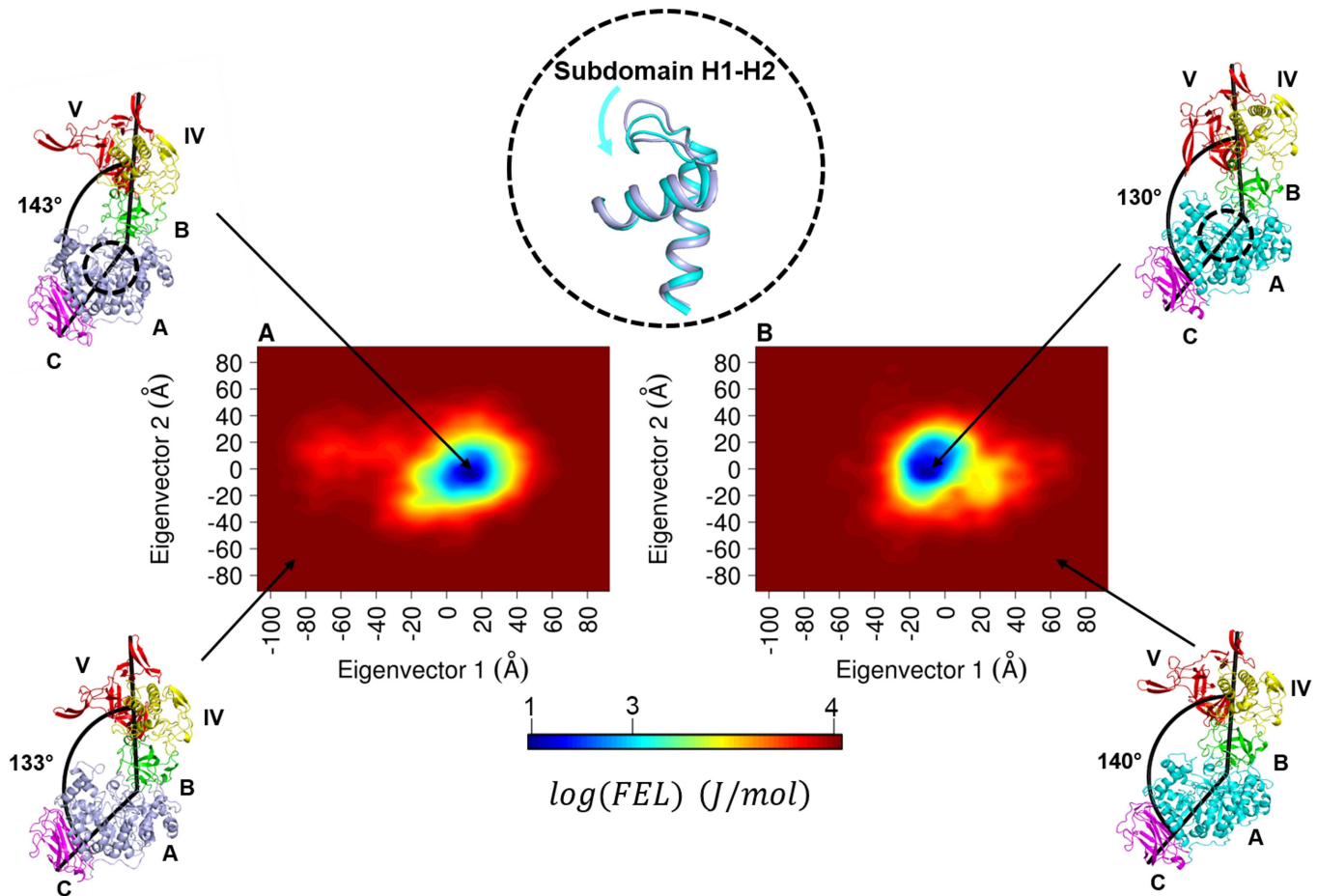


Fig 8. Free energy landscape (FEL) of ΔN_{123} -GBD-CD2. FEL in free form (A) and in complex with sucrose (B) were determined using as reaction coordinates the projection of the first and second principal components. The bottom legend shows the color scale of the logarithm of FEL in $J \cdot mol^{-1}$. Structural snapshots taken from the low or high energy regions pointed by the arrows are shown. The top center structural motif represents the subdomain H1-H2 structures from energetic wells of free-ligand (light blue) or complex (cyan) simulations. An empirical angle formed between the $C\alpha$ atoms of N7 (domain V), the E912 (domain A) and N738 (domain C) was defined for each conformation to illustrate the bending mode.

<https://doi.org/10.1371/journal.pone.0201323.g008>

motifs are less flexible. Interestingly, the 2127–2128 loop is fully stabilized along the simulation in the presence of sucrose, viewed by a significant decrease of the flexibility between the free form and the complexed one. This stabilization is mostly due to hydrophobic stacking interaction of F2136 side chain with the fructosyl moiety of the sucrose that is observed in all frames taken from the low energetic basin (Fig 9B). The subdomain H1-H2 also appears less flexible in the presence of sucrose bound in the active site, notably the 2324–2336 helix. The enhanced rigidity of this structural motif is due to the hydrogen bonding interaction between the glucosyl moiety from sucrose and residues D2321 and K2322 located upstream of the helix (Fig 9A and 9B). The behaviour of the H1-H2 subdomain reduces significantly the flexibility of the adjacent 2592–2605 loop in the simulation of the enzyme: sucrose complex, which is sandwiched between the H1-H2 domain and the 2634–2651 loop containing the D2643 and the N2648 residues that form two hydrogen bonds with the O3 and O4 of the glucosyl moiety from sucrose. Two other residues stabilize the sucrose ligand in the active site and help to maintain a productive conformation. The first one is the residue Q2394 that forms a hydrogen bond with the O6 of the glucosyl. The second one is the nucleophile residue D2210 which shows an interesting behaviour, i.e. one oxygen atom of the carboxyl group forms a hydrogen

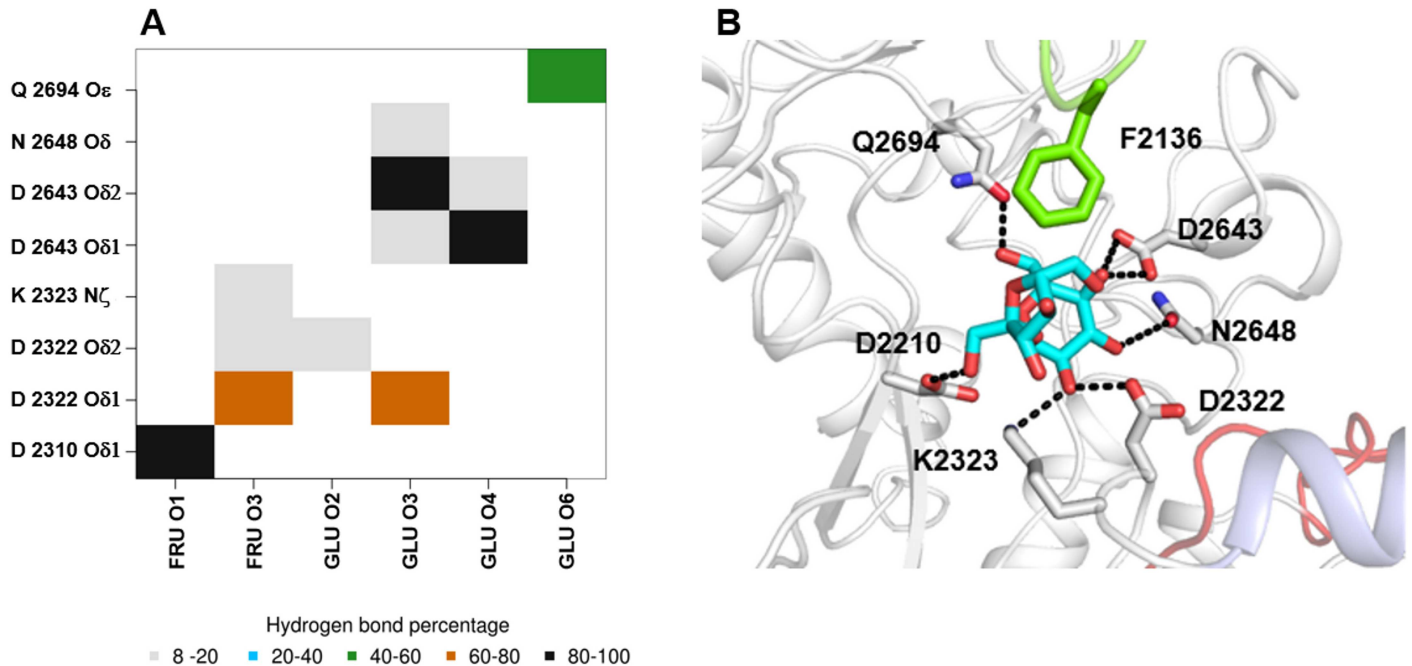


Fig 9. Main interactions between sucrose and amino acid residues in the active site. Map of hydrogen bonding interactions occurring between ΔN_{123} -GBD-CD2 and sucrose in clusters taken from the energy landscape basins ($\Delta G < 100 \text{ J. mol}^{-1}$) (A). The x and y axis indicate the atoms from sucrose and the enzyme involved in hydrogen bonding interactions. The color code indicates the hydrogen bond occurrence percentage over the cluster. In (B) panel are illustrated the important interactions observed between sucrose and amino acids in the catalytic pocket.

<https://doi.org/10.1371/journal.pone.0201323.g009>

bond with the O1 of the fructose moiety, whereas the second one is oriented toward the C1 of the glucosyl, favouring thus the nucleophilic attack.

Comparison of the two X-ray structures of ΔN_{123} -GBD-CD2 (unbound and bound enzyme: glycerol) revealed that subdomain H1-H2 (residues 2324–2368) displays the highest structural divergence (S7 Fig). Furthermore, the corresponding motif in DSR-M undergoes a similar shift when comparing free enzyme (pdb entry: 5LFC) and sucrose-inactive mutant complex (pdb entry: 5O8L) [20]. Similarly, the structure of GTF-180- ΔN in complex with sucrose (pdb entry: 3HZ3) shows a shift of this subdomain. In overall, analysis of the different available X-ray structures suggests that the shift of the H1-H2 subdomain in direction of the catalytic pocket is only observed when sucrose (3HZ3 and 5O8L) or glycerol (3TTQ, 3KLK) molecules is bound to the catalytic site. The examination of subdomain H1-H2 conformations shown in Fig 8, provides that this subdomain undergoes in MD simulations the same shift observed in X-ray structures when enzyme is bound to sucrose. These results strongly suggest the implication of the subdomain H1-H2 dynamics in the recognition of sucrose and its stabilisation in the active site.

Effect of sucrose binding on the global dynamics of ΔN_{123} -GBD-CD2. As described in the previous section, the first principal component presents a shift in the kernel density center when comparing the free enzyme and the enzyme: sucrose complex simulations, moreover its distribution appears more harmonic in the complex system. Thus the essential dynamics extracted from the first PC appears the appropriate tool for understanding the structural meaning of the KDE shift and harmonicity. The cross correlation atomic motion maps (S8 Fig) obtained from essential dynamics indicate that the major difference between complex and free-ligand forms reside in the block D, with increased intra-domain correlated motions in the complex PCs. Remarkably, the Pearson correlation coefficient points out that the essential

dynamics atomic cross correlation of the complex is more correlated to the normal mode of the free enzyme form ($R = 0.95$) than to the essential dynamics of the free enzyme system ($R = 0.86$). The similarity between the essential dynamics and normal mode analysis supports the harmonicity observed on the distribution of first eigenvector from the enzyme:sucrose system. The analysis of the enzyme structures extracted from the energetic basins from free and complex systems shows clearly that the thermodynamics equilibrium (conformer population) is shifted toward the closed form when the enzyme is bound to sucrose (Fig 8). In this closed conformation, the sucrose is then positioned near the nucleophile D2210 to enable catalysis (S9 Fig). To illustrate the observed bending mode, an empirical angle formed between the $C\alpha$ atoms of N7 (domain V), the E912 (domain A) and N738 (domain C) was defined, and was found to be lower in the complexed form (Fig 8). Altogether these results suggest a role of the global dynamics and especially the twofold behaviour of domain A on sucrose recognition and its catalytic transformation by ΔN_{123} -GBD-CD2.

Conclusion

In summary, large-scale MD simulation of 1 μ s and normal mode analysis was carried out for the first time on a branching sucrose from GH70 family, namely the ΔN_{123} -GBD-CD2. By combining multiple analyses and different metrics, we were able to uncover specific motions and events occurring at different timescales, dynamical correlations existing between the different amino acid residues and more generally, study how they impact the global dynamics of the enzyme and substrate recognition. Overall, our simulations show a fine-tuned partitioning of the dynamics that goes beyond the organization of the enzyme in five structural domains. Correlated motions, corroborating the conformational organization of the enzyme in crystallographic lattices, revealed a cooperativity of low frequency twisting, bending and wobbling modes leading to the movement of two blocks formed respectively by domains A and C and domains IV and V, and connected via the domain B which forms a flexible structural hinge reported here for the first time to our knowledge. The flexibility of the domain V is found to be by far the most flexible structural domain in the enzyme and an integral part of global dynamics, swinging toward and away from the catalytic site, around a clearly identified hinge region (residues 1956 and 2004) between domains IV and V. Interestingly, normal modes and essential dynamics underlined a two-fold dynamic of catalytic domain A, pivoting about an axis splitting the catalytic gorge in two parts. Furthermore, catalytic pocket is surrounded by highly flexible loops that could play a key role in the acceptor promiscuity of ΔN_{123} -GBD-CD2. The probed local and global dynamics of the enzyme:sucrose complex confirm the implication of the loops surrounding the active site and the role of global binding mode in the stabilization of sucrose in the catalytic site and assisting its productive binding. Inferred information on long timescale motions occurring in ΔN_{123} -GBD-CD2 would have been otherwise inaccessible via biophysical methods, notably the function of domain B, which long remained totally obscure. In perspective, the fundamental knowledge gathered in this study will be of central importance for the design of enzyme variants with improved properties for biotechnological applications.

Material and methods

3D-model construction

The three-dimensional modelling of ΔN_{123} -GBD-CD2 was based on the 1.8Å resolved crystallographic structure of ΔN_{123} -GBD-CD2 (pdb entry: 3ttq [7]) for which the missing loop 1839–1849 was rebuilt using the FREAD server [68]. The enzyme:sucrose complex was constructed by extracting sucrose molecule from the X-ray structure of homologous GTF180 in

complex with sucrose (pdb entry 3hz3 [22]). The H++ webserver [69] was used to determine the protonation state of ionisable residues at pH 5.4 at which Δ N123-GBD-CD2 exhibits the optimum of activity [70]. The heptacoordinated calcium and sodium ions located at the interface of domains A and B or domains V and IV, respectively, were considered in MD simulations.

Molecular dynamics simulations

MD simulations were performed using the AMBER ff14SB force-field [71] for enzymes and GLYCAM_06j-1 [72] for sucrose ligand. The NAMD program [73] was used for simulations with the free enzyme whereas pmemd.CUDA [74] which supports the mixed scaling of 1–4 non-bonded electrostatic and van der Waals terms [75] in amino acids and sugars was used for simulations on enzyme:sucrose complex. MD simulations were carried out at constant temperature (303K) and pressure (1bar) using the Berendsen algorithm [76]. The integration time-step was 2fs and covalent bonds involving hydrogens were constrained using SHAKE [77]. The non-bonded pair-list was updated heuristically. Long-range electrostatic interactions were treated using the Particle Mesh Ewald (PME) approach [78]. Non-bonded interactions were treated with a 9Å direct space cut-off. All enzyme systems were neutralized with Na⁺ ions [79] (minimal salt condition), in explicit TIP3P water molecules [80]; the primary boxes were rectangular with solvent extending 10Å around the enzymes. The water molecules and counterions were energy-minimized and equilibrated at 100K around the constrained solute for 100ps in the NVT ensemble; the entire system was then heated incrementally over 100ps from 100 to 300K in 5K steps with harmonic positional restraints of 25.0kcal/mol/Å² on the solute atoms. The MD simulations were continued in NPT, without notable change in volume. The positional restraints were gradually removed over 250ps and followed by the production phase. MD snapshots were saved every 10ps. The MD simulations were carried out for a total of 1μs for the free enzyme and 100ns for the sucrose bound complex.

Normal mode analysis. The initial enzyme coordinates were taken from the crystal structure of Δ N123-GBD-CD2 (pdb entry: 3ttq). Hydrogen atoms were added, and system topology was generated using the CHARMM-GUI web-based graphical interface [81]. The energy was minimized by the conjugate gradient method using the CHARMM36 program [82] with CHARMM36 force field [83]. Harmonic constraints were applied to heavy atoms to allow smooth minimization without abrupt deviation from the crystallographic structure for the first 1000 steps. The positional restraints were gradually decreased over 100 steps, the constant forces were 250, 100, 50, 25, 10 and 5 kcal/mol/Å², followed by 20 000 steps of a non-constrained minimization. The DIMB method [84,85] was used to compute low-frequency normal modes in the Cartesian space ($\omega < 10 \text{ cm}^{-1}$, 26 modes), with a convergence of 0.08 for the eigenvectors. The maximum size of diagonalized blocks was 1500·3 atoms, with 15952 atoms of Δ N123-GBD-CD2, the required memory space was 64.8 Gigabytes. The time consumption was 250 hours. The first six modes, which correspond to global translation and rotation of the whole enzyme, were removed.

Trajectory analysis

Principal component analysis and MD convergence. Principal Component Analyses (PCA) were performed using CPPTRAJ [86]. The coordinate covariance matrix of only heavy atoms was calculated using an offset of 10 frames. Each snapshot of the trajectory was aligned to the overall average coordinates in order to remove global rotational and translational motions. The projection along these 20 first eigenvectors for each coordinate frame from the simulation trajectory was then calculated. First, the eigenmode calculation was done

considering the overall MD simulation in order to study the global motion of the enzyme. Next, the overlap of PCA histograms corresponding to the first and second half of each MD simulation trajectory was used to probe the system convergence using the Kullback-Leibler Divergence (KLD) metric [87] as described by Cheatham's group [38].

Root Mean Square Deviation and atomic fluctuations. The Root Mean Square Deviation (RMSD) of C α atoms over the whole enzyme was calculated for each MD simulation. Furthermore, the average per-residue (residual) RMSD was computed in order to follow the deviation at the residue level during the course of the MD simulation. In order to remove translational and rotational motions, the MD snapshots were rms-fitted onto the X-ray structure. The Root Mean Square Fluctuation (RMSF) permits the measure of the atomic average mobility during MD simulation. In this work, the average mass-weighted fluctuations of C α atoms and the B-factors were calculated for each residue using the following equations:

$$RMSF = \sqrt{\frac{1}{nsteps} \sum_{i=1}^{nsteps} \|r_i(t) - \langle r_i \rangle\|^2}$$

and

$$B - factor = RMSF^2 \left(\frac{8}{3}\right) \pi^2$$

Where r_i is the position of atom (i) at time (t), and $\langle r_i \rangle$ is the average position of the atom.

Dynamical Cross-Correlation Matrices. Analysis of normal modes, essential dynamics trajectories and X-ray structure was performed in terms of covariance matrix c_{ij} and Dynamical Cross-Correlation Matrices (DCCM) [88]. All coordinates were translated and rotated by means of a least-square-fitting procedure using heavy atoms of backbone and side chains to align the equilibrated starting conformation of simulated data or X-ray structure (pdb entry: 3TTQ). The covariance matrix c_{ij} for the position vectors of two residues i and j in the fitted structure is calculated as:

$$c_{ij} = \langle (r_i - \langle r_i \rangle)(r_j - \langle r_j \rangle) \rangle = \langle r_i r_j \rangle - \langle r_i \rangle \langle r_j \rangle$$

The cross-correlation matrix elements C_{ij} are defined by the following equation:

$$C_{ij} = \frac{c_{ij}}{\sqrt{c_{ii}} \sqrt{c_{jj}}} = \frac{\langle r_i r_j \rangle - \langle r_i \rangle \langle r_j \rangle}{\sqrt{[(\langle r_i^2 \rangle - \langle r_i \rangle^2)(\langle r_j^2 \rangle - \langle r_j \rangle^2)']}}$$

Cross-correlation coefficients range from a value of -1 (completely anti-correlated motions) to a value of $+1$ (completely correlated motions).

Wavelet analysis. In our study, we used the new implementation of wavelet analysis [49] in CPPTRAJ 2017 software to perform the wavelet analysis using Fast Fourier Transform (FFT) algorithm [89] on MD simulation trajectory. Translational and rotational motions were removed as described above. Wavelet analysis contains two main steps which perform Continuous Wavelet Transform (CWT) and statistical significance testing as described by Torrence and Compo [90]. For each heavy atom, Morelet CWT [91] is calculated over a given scale ranging from 0.2 to 25 ns and by multiplying with a correction value of 1.01. All wavelet analyses were done using $\chi^2 = 1.6094$ which is the minimum acceptable value for running a significance test at 99% confidence level.

Free-energy landscape. The free-energy landscape of a macromolecule can be obtained using a MD simulation sampling method that allows to explore the conformations near the native state structure [67]. Here, we constructed the free-energy landscape along the two first

Principal Components (PCs) using the following equation:

$$G_{\alpha} = -kT \ln \frac{P(q_{\alpha})}{P_{max}(q)}$$

Where k is the Boltzmann constant, T is the temperature of the simulation (303 Kelvin), $P(q_{\alpha})$ is an estimation of the probability of an α state and the $P_{max}(q)$ is the probability of the most probable state. Considering the two reaction coordinates (two first PCs), the free-energy landscape is obtained from the joint kernel density estimation of the distribution $P(q_i, q_j)$ of the system using the fast computation of multivariate Kernel estimators [92].

Supporting information

S1 Fig. MD simulation convergence. Kullback-Leibler Divergence of Principal Component projection histograms was calculated from first (1 to 500ns) and second half (500ns to 1 μ s) of MD simulation trajectories vs time for the three first principal components (colored in black, yellow and orange, respectively).

(PDF)

S2 Fig. Quantitative measurement of ΔN_{123} -GBD-CD2 MD conformational motions during MD simulation of 1 μ s carried out in water. Heavy atom Root Mean Square Deviation of the whole enzyme (black line) and enzyme without domain V (red line) with respect to X-ray structure were calculated as function of simulation time.

(PDF)

S3 Fig. Normalized eigenvalues versus Mode number. Eigenvalues of each mode were normalized over the total motion ($\text{eigenvalue}_{(i)} / \sum_{n=1}^i \text{eigenvalue}$) and plotted against Mode number of NMA (black dots) and EDA (red triangles), respectively.

(PDF)

S4 Fig. Quantitative measurement of ΔN_{123} -GBD-CD2-sucrose complex MD conformational motions during MD simulation of 100ns carried out in water. Heavy atoms Root Mean Square Deviation of the whole enzyme (black line), enzyme without domain V (red line) and sucrose (green line) with respect to X-ray structure were calculated as function of simulation time.

(PDF)

S5 Fig. Free energy landscape (FEL) of ΔN_{123} -GBD-CD2. FEL in free form (A) and in complex with sucrose (B) were determined using as reaction coordinates the projection of the second and third principal components. The bottom legend shows the color scale of the logarithm of FEL in J. mol⁻¹.

(PDF)

S6 Fig. Average mass-weighted fluctuations of C α atoms. B-factors were calculated as function of enzyme amino acid residues along 100ns MD simulation of ΔN_{123} -GBD-CD2 in complex with sucrose (yellow line) or the free-ligand MD simulation (black line). The bottom strip represents the secondary structures of X-ray ΔN_{123} -GBD-CD2 for reference: helix (blue), sheet (orange) and coil (grey). The strips in the background of the B-factors lines highlight structural motifs surrounding the active site, represented using the same color code as Fig 3B in the main text. The highlighted regions are loop 2127–2138, helix-loop-helix motif corresponding to region 2324–2368 and its adjacent loop 2592–2605, then the 2290–2300 and 2757–2780 β -hairpin motifs in green, light blue, red, magenta and forest green, respectively.

(PDF)

S7 Fig. Superimposition of the two solved structures of ΔN_{123} -GBD-CD2. The helix-loop-helix motifs corresponding to residues 2324–2368 are highlighted in light blue (pdb entry: 3ttq) and cyan (pdb entry: 4ttu). The side chains in sticks represent the catalytic residues: the nucleophile D2210 and the acid base E2248. The orange sphere is shown for reference to locate the active site.

(PDF)

S8 Fig. Dynamical inter-residue correlation map of ΔN_{123} -GBD-CD2. Maps were calculated from free ligand EDA (A), NMA (B), and from enzyme-sucrose complex EDA (C). The color scale from orange to blue corresponds to discrete correlation coefficient values (DCC) from -1.0 to +1.0. The structural domains of ΔN_{123} -GBD-CD2 are shown using the same color code as in Fig 3B in the main text.

(PDF)

S9 Fig. Conformation of sucrose in the active site. The closed form (A) and the open form (B) were extracted from essential dynamics analysis. The distances in Angstrom between the carboxyl oxygen atom of the nucleophile D2210 and C1 of sucrose are shown for each form.

(PDF)

S1 Table. List of ΔN_{123} -GBD-CD2 X-ray structures available in the Protein Data Bank.

(PDF)

Acknowledgments

This work was supported by the French National Research Agency (ANR Project CARBUNI-VAX, ANR-15-CE07-0019-01). This work was granted access to the HPC resources on the TGCC-Curie supercomputer under the allocations x2016077709, A0030707709 and the Computing mesocenter of Région Midi-Pyrénées (CALMIP, Toulouse, France) under allocation P16008.

Author Contributions

Conceptualization: Akli Ben Imeddourene, Jérémy Esque, Isabelle André.

Formal analysis: Akli Ben Imeddourene, Isabelle André.

Funding acquisition: Isabelle André.

Investigation: Akli Ben Imeddourene, Jérémy Esque, Isabelle André.

Methodology: Akli Ben Imeddourene.

Project administration: Isabelle André.

Resources: Akli Ben Imeddourene.

Supervision: Isabelle André.

Validation: Akli Ben Imeddourene, Isabelle André.

Visualization: Akli Ben Imeddourene, Isabelle André.

Writing – original draft: Akli Ben Imeddourene, Jérémy Esque, Isabelle André.

Writing – review & editing: Akli Ben Imeddourene, Jérémy Esque, Isabelle André.

References

1. Cantarel BL, Coutinho PM, Rancurel C, Bernard T, Lombard V, Henrissat B. The Carbohydrate-Active EnZymes database (CAZy): an expert resource for Glycogenomics. *Nucl. Acids Res.* 2009 Jan 1; 37 (suppl_1):D233–8.
2. MacGregor EA, Jespersen HM, Svensson B. A circularly permuted α -amylase-type α/β -barrel structure in glucan-synthesizing glucosyltransferases. *FEBS Lett.* 1996 Jan 15; 378(3):263–6. PMID: [8557114](#)
3. Monchois V, Willemot R-M, Monsan P. Glucansucrases: mechanism of action and structure–function relationships. *FEMS Microbiol Rev.* 1999 Apr 1; 23(2):131–51. PMID: [10234842](#)
4. Moulis C, André I, Remaud-Simeon M. GH13 amylosucrases and GH70 branching sucrases, atypical enzymes in their respective families. *Cell Mol Life Sci.* 2016 Jul 1; 73(14):2661–79. <https://doi.org/10.1007/s00018-016-2244-8> PMID: [27141938](#)
5. Kralj S, van Geel-Schutten GH, Dondorff MMG, Kirsanovs S, van der Maarel MJEC, Dijkhuizen L. Glucan synthesis in the genus *Lactobacillus*: isolation and characterization of glucansucrase genes, enzymes and glucan products from six different strains. *Microbiology (Reading, Engl.)*. 2004 Nov; 150 (Pt 11):3681–90.
6. Bozonnet S, Dols-Laffargue M, Fabre E, Pizzut S, Remaud-Simeon M, Monsan P, et al. Molecular Characterization of DSR-E, an α -1,2 Linkage-Synthesizing Dextransucrase with Two Catalytic Domains. *J. Bacteriol.* 2002 Oct 15; 184(20):5753–61. <https://doi.org/10.1128/JB.184.20.5753-5761.2002> PMID: [12270834](#)
7. Brison Y, Pijning T, Malbert Y, Fabre E, Mourey L, Morel S, et al. Functional and Structural Characterization of α -(1→2) Branching Sucrase Derived from DSR-E Glucansucrase. *J. Biol. Chem.* 2012 Sep 3; 287(11):7915–24. <https://doi.org/10.1074/jbc.M111.305078> PMID: [22262856](#)
8. Fabre E, Bozonnet S, Arcache A, Willemot R-M, Vignon M, Monsan P, et al. Role of the Two Catalytic Domains of DSR-E Dextransucrase and Their Involvement in the Formation of Highly α -1,2 Branched Dextran. *J. Bacteriol.* 2005 Jan 1; 187(1):296–303. <https://doi.org/10.1128/JB.187.1.296-303.2005> PMID: [15601714](#)
9. Vuillemin M, Claverie M, Brison Y, Séverac E, Bondy P, Morel S, et al. Characterization of the First α -(1→3) Branching Sucrases of the GH70 Family. *J. Biol. Chem.* 2016 Apr 1; 291(14):7687–702. <https://doi.org/10.1074/jbc.M115.688044> PMID: [26763236](#)
10. Passerini D, Vuillemin M, Laguerre S, Amari M, Loux V, Gabriel V, et al. Complete Genome Sequence of *Leuconostoc citreum* Strain NRRL B-742. *Genome Announc.* 2014 Dec 24; 2(6):e01179–14. <https://doi.org/10.1128/genomeA.01179-14> PMID: [25428963](#)
11. Passerini D, Vuillemin M, Ufarté L, Morel S, Loux V, Fontagné-Faucher C, et al. Inventory of the GH70 enzymes encoded by *Leuconostoc citreum* NRRL B-1299—identification of three novel α -trans-glucosylases. *FEBS J.* 2015 Jun 1; 282(11):2115–30. <https://doi.org/10.1111/febs.13261> PMID: [25756290](#)
12. Djouzi Z, Andrieux C, Pelenc V, Somarriba S, Popot F, Paul F, et al. Degradation and fermentation of α -gluco-oligosaccharides by bacterial strains from human colon: *in vitro* and *in vivo* studies in gnotobiotic rats. *J. Appl. Bacteriol.* 1995 Aug 1; 79(2):117–27. PMID: [7592106](#)
13. Djouzi Z, Andlueux C. Compared effects of three oligosaccharides on metabolism of intestinal microflora in rats inoculated with a human faecal flora. *British J. Nutr.* 1997 Aug; 78(2):313–24.
14. Flickinger EA, Wolf BW, Garleb KA, Chow J, Leyer GJ, Johns PW, et al. Glucose-Based Oligosaccharides Exhibit Different *In Vitro* Fermentation Patterns and Affect *In Vivo* Apparent Nutrient Digestibility and Microbial Populations in Dogs. *J. Nutr.* 2000 Jan 5; 130(5):1267–73. <https://doi.org/10.1093/jn/130.5.1267> PMID: [10801928](#)
15. Sarbini SR, Kolida S, Naeye T, Einerhand A, Brison Y, Remaud-Simeon M, et al. *In Vitro* Fermentation of Linear and α -1,2-Branched Dextrans by the Human Fecal Microbiota. *Appl. Environ. Microbiol.* 2011 Jan 8; 77(15):5307–15. <https://doi.org/10.1128/AEM.02568-10> PMID: [21666027](#)
16. Valette P, Pelenc V, Djouzi Z, Andrieux C, Paul F, Monsan P, et al. Bioavailability of new synthesised glucooligosaccharides in the intestinal tract of gnotobiotic rats. *J. Sci. Food Agric.* 1993 Jan 1; 62 (2):121–7.
17. Chung CH, Day DF. Efficacy of *Leuconostoc mesenteroides* (ATCC 13146) isomaltooligosaccharides as a poultry prebiotic. *Poult Sci.* 2004 Aug 1; 83(8):1302–6. <https://doi.org/10.1093/ps/83.8.1302> PMID: [15339004](#)
18. Leemhuis H, Pijning T, Dobruchowska JM, van Leeuwen SS, Kralj S, Dijkstra BW, et al. Glucansucrases: Three-dimensional structures, reactions, mechanism, α -glucan analysis and their implications in biotechnology and food applications. *J. Biotechnol.* 2013 Jan 20; 163(2):250–72. <https://doi.org/10.1016/j.jbiotec.2012.06.037> PMID: [22796091](#)

19. Brison Y, Malbert Y, Czaplicki G, Mourey L, Remaud-Simeon M, Tranier S. Structural insights into the carbohydrate-binding ability of an α -(1 \rightarrow 2) branching sucrose from glycoside-hydrolase family 70. *J. Biol. Chem.* 2016 Feb 10; 7527–7540. <https://doi.org/10.1074/jbc.M115.688796> PMID: 26865636
20. Claverie M, Cioci G, Vuillemin M, Monties N, Roblin P, Lippens G, et al. Investigations on the Determinants Responsible for Low Molar Mass Dextran Formation by DSR-M Dextranase. *ACS Catal.* 2017 Oct 6; 7(10):7106–19.
21. Janeček Š, Svensson B, MacGregor EA. Structural and evolutionary aspects of two families of non-catalytic domains present in starch and glycogen binding proteins from microbes, plants and animals. *Enzyme and Microbial Technol.* 2011 Oct 10; 49(5):429–40.
22. Vujičić-Žagar A, Pijning T, Kralj S, López CA, Eeuwema W, Dijkhuizen L, et al. Crystal structure of a 117 kDa glucansucrase fragment provides insight into evolution and product specificity of GH70 enzymes. *Proc. Natl. Acad. Sci.* 2010 Dec 14; 107(50):21406–11. <https://doi.org/10.1073/pnas.1007531107> PMID: 21118988
23. Ito K, Ito S, Shimamura T, Weyand S, Kawarasaki Y, Misaka T, et al. Crystal Structure of Glucansucrase from the Dental Caries Pathogen *Streptococcus mutans*. *J. Mol. Biol.* 2011 Apr 29; 408(2):177–86. <https://doi.org/10.1016/j.jmb.2011.02.028> PMID: 21354427
24. Pijning T, Vujičić-Žagar A, Kralj S, Dijkhuizen L, Dijkstra BW. Structure of the α -1,6/ α -1,4-specific glucansucrase GTFA from *Lactobacillus reuteri* 121. *Acta Crystallogr. Section F Structural Biology and Crystallization Communications.* 2012 Dec 1; 68(12):1448–54.
25. Brison Y, Malbert Y, Czaplicki G, Mourey L, Remaud-Simeon M, Tranier S. Structural insights into the carbohydrate-binding ability of an α -(1 \rightarrow 2) branching sucrose from glycoside-hydrolase family 70. *J. Biol. Chem.* 2016 Feb 10; 7527–40. <https://doi.org/10.1074/jbc.M115.688796> PMID: 26865636
26. Moulis C, Joucla G, Harrison D, Fabre E, Potocki-Veronese G, Monsan P, et al. Understanding the polymerization mechanism of glycoside-hydrolase family 70 glucansucrases. *J. Biol. Chem.* 2006 Oct 20; 281(42):31254–67. <https://doi.org/10.1074/jbc.M604850200> PMID: 16864576
27. Meng X, Dobruchowska JM, Pijning T, Gerwig GJ, Kamerling JP, Dijkhuizen L. Truncation of domain V of the multidomain glucansucrase GTF180 of *Lactobacillus reuteri* 180 heavily impairs its polysaccharide-synthesizing ability. *Appl. Microbiol. Biotechnol.* 2015 Jul 1; 99(14):5885–94. <https://doi.org/10.1007/s00253-014-6361-8> PMID: 25586581
28. Pijning T, Vujičić-Žagar A, Kralj S, Dijkhuizen L, Dijkstra BW. Flexibility of truncated and full-length glucansucrase GTF180 enzymes from *Lactobacillus reuteri* 180. *FEBS J.* 2014 May 1; 281(9):2159–71. <https://doi.org/10.1111/febs.12769> PMID: 24597929
29. Fernández-Tornero C, López R, García E, Giménez-Gallego G, Romero A. A novel solenoid fold in the cell wall anchoring domain of the pneumococcal virulence factor LytA. *Nat. Struct. Biol.* 2001 Dec; 8(12):1020–4. <https://doi.org/10.1038/nsb724> PMID: 11694890
30. Boehr DD, Dyson HJ, Wright PE. An NMR Perspective on Enzyme Dynamics. *Chem. Rev.* 2006 Aug 1; 106(8):3055–79. <https://doi.org/10.1021/cr050312q> PMID: 16895318
31. Eisenmesser EZ, Millet O, Labeikovsky W, Korzhnev DM, Wolf-Watz M, Bosco DA, et al. Intrinsic dynamics of an enzyme underlies catalysis. *Nature.* 2005 Nov; 438(7064):117–21. <https://doi.org/10.1038/nature04105> PMID: 16267559
32. Eisenmesser EZ, Bosco DA, Akke M, Kern D. Enzyme Dynamics During Catalysis. *Science.* 2002 Feb 22; 295(5559):1520–3. <https://doi.org/10.1126/science.1066176> PMID: 11859194
33. Henzler-Wildman KA, Thai V, Lei M, Ott M, Wolf-Watz M, Fenn T, et al. Intrinsic motions along an enzymatic reaction trajectory. *Nature.* 2007 Dec; 450(7171):838–44. <https://doi.org/10.1038/nature06410> PMID: 18026086
34. Kay LE. Protein dynamics from NMR. *Biochem. Cell Biol.* 1998 May 1; 76(2–3):145–52. PMID: 9923683
35. Perilla JR, Goh BC, Cassidy CK, Liu B, Bernardi RC, Rudack T, et al. Molecular dynamics simulations of large macromolecular complexes. *Curr. Opin. Struct. Biol.* 2015 Apr 1; 31:64–74. <https://doi.org/10.1016/j.sbi.2015.03.007> PMID: 25845770
36. Stewart AG, Lee LK, Donohoe M, Chaston JJ, Stock D. The dynamic stator stalk of rotary ATPases. *Nature Comm.* 2012 Feb 21; 3:687.
37. Amadei A, Ceruso MA, Di Nola A. On the convergence of the conformational coordinates basis set obtained by the essential dynamics analysis of proteins' molecular dynamics simulations. *Proteins.* 1999 Sep 1; 36(4):419–24. PMID: 10450083
38. Galindo-Murillo R, Roe DR, Cheatham TE III. Convergence and reproducibility in molecular dynamics simulations of the DNA duplex d(GCACGAACGAACGACGC). *Biochim. Biophys. Acta (BBA)—General Subjects.* 2015 May; 1850(5):1041–58.

39. Zhang W, Wu C, Duan Y. Convergence of replica exchange molecular dynamics. *J. Chem. Phys.* 2005 Oct 15; 123(15):154105. <https://doi.org/10.1063/1.2056540> PMID: 16252940
40. Roe DR, Bergonzo C, Cheatham TE. Evaluation of Enhanced Sampling Provided by Accelerated Molecular Dynamics with Hamiltonian Replica Exchange Methods. *J. Phys. Chem. B.* 2014 Apr 3; 118(13):3543–52. <https://doi.org/10.1021/jp4125099> PMID: 24625009
41. Pasi M, Maddocks JH, Beveridge D, Bishop TC, Case DA, Cheatham T, et al. μ ABC: a systematic microsecond molecular dynamics study of tetranucleotide sequence effects in B-DNA. *Nucl. Acids Res.* 2014 Sep 26; 42(19):12272–83. <https://doi.org/10.1093/nar/gku855> PMID: 25260586
42. Gamage NU, Tsvetanov S, Duggleby RG, McManus ME, Martin JL. The Structure of Human SULT1A1 Crystallized with Estradiol an insight into active site plasticity and substrate inhibition with multi-ring substrates. *J. Biol. Chem.* 2005 Dec 16; 280(50):41482–6. <https://doi.org/10.1074/jbc.M508289200> PMID: 16221673
43. Khersonsky O, Roodveldt C, Tawfik DS. Enzyme promiscuity: evolutionary and mechanistic aspects. *Curr. Opin. Chem. Biol.* 2006 Oct 1; 10(5):498–508. <https://doi.org/10.1016/j.cbpa.2006.08.011> PMID: 16939713
44. Yasutake Y, Yao M, Sakai N, Kirita T, Tanaka I. Crystal Structure of the *Pyrococcus horikoshii* Isopropylmalate Isomerase Small Subunit Provides Insight into the Dual Substrate Specificity of the Enzyme. *J. Mol. Biol.* 2004 Nov 19; 344(2):325–33. <https://doi.org/10.1016/j.jmb.2004.09.035> PMID: 15522288
45. Zou T, Risso VA, Gavira JA, Sanchez-Ruiz JM, Ozkan SB. Evolution of Conformational Dynamics Determines the Conversion of a Promiscuous Generalist into a Specialist Enzyme. *Mol. Biol. Evol.* 2015 Jan 1; 32(1):132–43. <https://doi.org/10.1093/molbev/msu281> PMID: 25312912
46. Salamone S, Guerreiro C, Cambon E, André I, Remaud-Siméon M, Mulard LA. Programmed chemo-enzymatic synthesis of the oligosaccharide component of a carbohydrate-based antibacterial vaccine candidate. *Chem. Commun.* 2015 Jan 29; 51(13):2581–4.
47. Malbert Y. Flavonoid glucodiversification with engineered sucrose-active enzymes D. Sc. Thesis, The University of Toulouse, 2014. <https://tel.archives-ouvertes.fr/tel-01219406>
48. Benson N, Dagget V. Wavelet Analysis of Protein Motion. *J. Phys. Chem. B.* 2012 Jul. 116(29):8722–31.
49. Heidari Z, Roe DR, Galindo-Murillo R, Ghasemi JB, Cheatham TE. Using Wavelet Analysis To Assist in Identification of Significant Events in Molecular Dynamics Simulations. *J. Chem. Inf. Model.* 2016 Jul 25; 56(7):1282–91. <https://doi.org/10.1021/acs.jcim.5b00727> PMID: 27286268
50. Ma J. Usefulness and Limitations of Normal Mode Analysis in Modeling Dynamics of Biomolecular Complexes. *Structure.* 2005 Mar 1; 13(3):373–80. <https://doi.org/10.1016/j.str.2005.02.002> PMID: 15766538
51. Marques O, Sanejouand Y-H. Hinge-bending motion in citrate synthase arising from normal mode calculations. *Proteins.* 1995 Dec 1; 23(4):557–60. <https://doi.org/10.1002/prot.340230410> PMID: 8749851
52. Tama F, Sanejouand Y-H. Conformational change of proteins arising from normal mode calculations. *Protein Eng. Des. Sel.* 2001 Jan 1; 14(1):1–6.
53. Doruker P, Atilgan AR, Bahar I. Dynamics of proteins predicted by molecular dynamics simulations and analytical approaches: Application to α -amylase inhibitor. *Proteins.* 2000 Aug 15; 40(3):512–24. PMID: 10861943
54. Dauber-Osguthorpe P, Osguthorpe DJ, Stern PS, Moulton J. Low Frequency Motion in Proteins: Comparison of Normal Mode and Molecular Dynamics of *Streptomyces Griseus* Protease A. *J. Comput. Phys.* 1999 May 1; 151(1):169–89.
55. Brooks B, Karplus M. Normal modes for specific motions of macromolecules: application to the hinge-bending mode of lysozyme. *Proc. Natl. Acad. Sci.* 1985 Aug 1; 82(15):4995–9. PMID: 3860838
56. Hayward S, Kitao A, Berendsen HJC. Model-free methods of analyzing domain motions in proteins from simulation: A comparison of normal mode analysis and molecular dynamics simulation of lysozyme. *Proteins.* 1997 Mar 1; 27(3):425–37. PMID: 9094744
57. Thomas A, Hinsen K, Field MJ, Perahia D. Tertiary and quaternary conformational changes in aspartate transcarbamylase: a normal mode study. *Proteins.* 1999 Jan 1; 34(1):96–112. PMID: 10336386
58. Hinsen K. Analysis of domain motions by approximate normal mode calculations. *Proteins.* 1998 Nov 15; 33(3):417–29. PMID: 9829700
59. Bahar I, Atilgan AR, Erman B. Direct evaluation of thermal fluctuations in proteins using a single-parameter harmonic potential. *Folding and Design.* 1997 Jun 1; 2(3):173–81. [https://doi.org/10.1016/S1359-0278\(97\)00024-2](https://doi.org/10.1016/S1359-0278(97)00024-2) PMID: 9218955
60. Levitt M, Sander C, Stern PS. Protein normal-mode dynamics: Trypsin inhibitor, crambin, ribonuclease and lysozyme. *J. Mol. Biol.* 1985 Feb 5; 181(3):423–47. PMID: 2580101

61. Keskin O, Durell SR, Bahar I, Jernigan RL, Covell DG. Relating Molecular Flexibility to Function: A Case Study of Tubulin. *Biophys. J.* 2002 Aug 1; 83(2):663–80. [https://doi.org/10.1016/S0006-3495\(02\)75199-0](https://doi.org/10.1016/S0006-3495(02)75199-0) PMID: 12124255
62. Loeffler HH, Kitao A. Collective Dynamics of Periplasmic Glutamine Binding Protein upon Domain Closure. *Biophys. J.* 2009 Nov 4; 97(9):2541–9. <https://doi.org/10.1016/j.bpj.2009.08.019> PMID: 19883597
63. Jain A, Stock G. Identifying Metastable States of Folding Proteins. *J. Chem. Theory Comput.* 2012 Oct 9; 8(10):3810–9. <https://doi.org/10.1021/ct300077q> PMID: 26593022
64. Bui JM, Gsponer J. Phosphorylation of an Intrinsically Disordered Segment in Ets1 Shifts Conformational Sampling toward Binding-Competent Substates. *Structure.* 2014 Aug 5; 22(8):1196–203. <https://doi.org/10.1016/j.str.2014.06.002> PMID: 25017730
65. Kitao A, Hayward S, Go N. Energy landscape of a native protein: Jumping-among-minima model. *Proteins.* 1998 Dec 1; 33(4):496–517. PMID: 9849935
66. Maisuradze GG, Liwo A, Scheraga HA. Principal component analysis for protein folding dynamics. *J. Mol. Biol.* 2009 Jan 9; 385(1):312–29. <https://doi.org/10.1016/j.jmb.2008.10.018> PMID: 18952103
67. Papaleo E, Pasi M, Riccardi L, Sambì I, Fantucci P, Gioia LD. Protein flexibility in psychrophilic and mesophilic trypsins. Evidence of evolutionary conservation of protein dynamics in trypsin-like serine-proteases. *FEBS Lett.* 2008 Mar 19; 582(6):1008–18. <https://doi.org/10.1016/j.febslet.2008.02.048> PMID: 18307991
68. Choi Y, Deane CM. FREAD revisited: Accurate loop structure prediction using a database search algorithm. *Proteins.* 2010 May 1; 78(6):1431–40. <https://doi.org/10.1002/prot.22658> PMID: 20034110
69. Anandakrishnan R, Aguilar B, Onufriev AV. H++ 3.0: automating pK prediction and the preparation of biomolecular structures for atomistic molecular modeling and simulations. *Nucl. Acids Res.* 2012 Jul 1; 40(W1):W537–41.
70. Brison Y, Fabre E, Moulis C, Portais J-C, Monsan P, Remaud-Siméon M. Synthesis of dextrans with controlled amounts of α -1,2 linkages using the transglucosidase GBD-CD2. *Appl. Microbiol. Biotechnol.* 2010 Mar 1; 86(2):545–54. <https://doi.org/10.1007/s00253-009-2241-z> PMID: 19834706
71. Cornell WD, Cieplak P, Bayly CI, Gould IR, Merz KM, Ferguson DM, et al. A Second Generation Force Field for the Simulation of Proteins, Nucleic Acids, and Organic Molecules. *J. Am. Chem. Soc.* 1995; 117, 5179–5197. *J. Am. Chem. Soc.* 1996 Jan 1; 118(9):2309–2309.
72. Kirschner KN, Yongye AB, Tschampel SM, González-Outeiriño J, Daniels CR, Foley BL, et al. GLY-CAM06: A generalizable biomolecular force field. *Carbohydrates. J. Comput. Chem.* 2008 Mar 1; 29(4):622–55. <https://doi.org/10.1002/jcc.20820> PMID: 17849372
73. Phillips JC, Braun R, Wang W, Gumbart J, Tajkhorshid E, Villa E, et al. Scalable molecular dynamics with NAMD. *J. Comput. Chem.* 2005 Dec 1; 26(16):1781–802. <https://doi.org/10.1002/jcc.20289> PMID: 16222654
74. Salomon-Ferrer R, Götz AW, Poole D, Le Grand S, Walker RC. Routine Microsecond Molecular Dynamics Simulations with AMBER on GPUs. 2. Explicit Solvent Particle Mesh Ewald. *J. Chem. Theory Comput.* 2013 Sep 10; 9(9):3878–88. <https://doi.org/10.1021/ct400314y> PMID: 26592383
75. Kirschner KN, Woods RJ. Solvent interactions determine carbohydrate conformation. *Proc. Natl. Acad. Sci.* 2001 Nov 9; 98(19):10541–5. <https://doi.org/10.1073/pnas.191362798> PMID: 11526221
76. Berendsen HJC, Postma JPM, van Gunsteren WF, DiNola A, Haak JR. Molecular dynamics with coupling to an external bath. *J. Chem. Phys.* 1984 Oct 15; 81(8):3684–90.
77. van Gunsteren WF, Berendsen HJC. Algorithms for macromolecular dynamics and constraint dynamics. *Molecular Physics.* 1977 Nov 1; 34(5):1311–27.
78. Darden T, York D, Pedersen L. Particle mesh Ewald: An N-log(N) method for Ewald sums in large systems. *J. Chem. Phys.* 1993 Jun 15; 98(12):10089–92.
79. Åqvist J. Ion-water interaction potentials derived from free energy perturbation simulations. *J. Phys. Chem.* 1990 Oct 1; 94(21):8021–4.
80. Jorgensen WL, Chandrasekhar J, Madura JD, Impey RW, Klein ML. Comparison of simple potential functions for simulating liquid water. *J. Chem. Phys.* 1983 Jul 15; 79(2):926–35.
81. Jo S, Kim T, Iyer VG, Im W. CHARMM-GUI: A web-based graphical user interface for CHARMM. *J. Comput. Chem.* 2008 Aug 1; 29(11):1859–65. <https://doi.org/10.1002/jcc.20945> PMID: 18351591
82. Brooks BR, Bruccoleri RE, Olafson BD, States DJ, Swaminathan S, Karplus M. CHARMM: A program for macromolecular energy, minimization, and dynamics calculations. *J. Comput. Chem.* 1983 Jun 1; 4(2):187–217.
83. Best RB, Zhu X, Shim J, Lopes PEM, Mittal J, Feig M, et al. Optimization of the Additive CHARMM All-Atom Protein Force Field Targeting Improved Sampling of the Backbone ϕ , ψ and Side-Chain χ_1 and χ_2

- Dihedral Angles. *J. Chem. Theory Comput.* 2012 Sep 11; 8(9):3257–73. <https://doi.org/10.1021/ct300400x> PMID: 23341755
84. Mouawad L, Perahia D. Diagonalization in a mixed basis: A method to compute low-frequency normal modes for large macromolecules. *Biopolymers.* 1993 Apr 1; 33(4):599–611.
 85. Perahia D, Mouawad L. Computation of low-frequency normal modes in macromolecules: Improvements to the method of diagonalization in a mixed basis and application to hemoglobin. *Computers & Chemistry.* 1995 Sep 1; 19(3):241–6.
 86. Roe DR, Cheatham TE. Ptraj and cpptraj: software for processing and analysis of molecular dynamics trajectory data. *J. Chem. Theory Comput.* 2013 Jul 9; 9(7):3084–95. <https://doi.org/10.1021/ct400341p> PMID: 26583988
 87. Kullback S, Leibler RA. On Information and Sufficiency. *The Annals of Mathematical Statistics.* 1951; 22(1):79–86.
 88. Hünenberger PH, Mark AE, van Gunsteren WF. Fluctuation and cross-correlation analysis of protein motions observed in nanosecond molecular dynamics simulations. *J. Mol. Biol.* 1995 Sep 29; 252(4):492–503. <https://doi.org/10.1006/jmbi.1995.0514> PMID: 7563068
 89. Frigo M, Johnson SG. FFTW: an adaptive software architecture for the FFT. In: *Proceedings of the 1998 IEEE International Conference on Acoustics, Speech and Signal Processing, 1998.* 1998. p. 1381–4 vol.3.
 90. Torrence C, Compo GP. A Practical Guide to Wavelet Analysis. *Bull Amer Meteor Soc.* 1998 Jan 1; 79(1):61–78.
 91. Goupillaud P, Grossmann A, Morlet J. Cycle-octave and related transforms in seismic signal analysis. *Geoprospection.* 1984 Oct 1; 23(1):85–102.
 92. Wand MP. Fast Computation of Multivariate Kernel Estimators. *J. Comput. and Graph. Statistics.* 1994; 3(4):433–45.