



HAL
open science

Development of an elastography bench for MR exam of small samples

Mathilde Bigot, Hugo Dorez, Céline a Mandon, Christophe Marquette, Kevin Tse-Ve-Koon, Pauline Lefebvre, Denis Grenier, Hamza Raki, Fabien Chauveau, O. Beuf, et al.

► To cite this version:

Mathilde Bigot, Hugo Dorez, Céline a Mandon, Christophe Marquette, Kevin Tse-Ve-Koon, et al.. Development of an elastography bench for MR exam of small samples. 9ème réunion annuelle de l'Institut Multi-organismes Technologies, Nov 2017, Lyon, France. hal-01886163

HAL Id: hal-01886163

<https://hal.science/hal-01886163>

Submitted on 2 Oct 2018

HAL is a multi-disciplinary open access archive for the deposit and dissemination of scientific research documents, whether they are published or not. The documents may come from teaching and research institutions in France or abroad, or from public or private research centers.

L'archive ouverte pluridisciplinaire **HAL**, est destinée au dépôt et à la diffusion de documents scientifiques de niveau recherche, publiés ou non, émanant des établissements d'enseignement et de recherche français ou étrangers, des laboratoires publics ou privés.

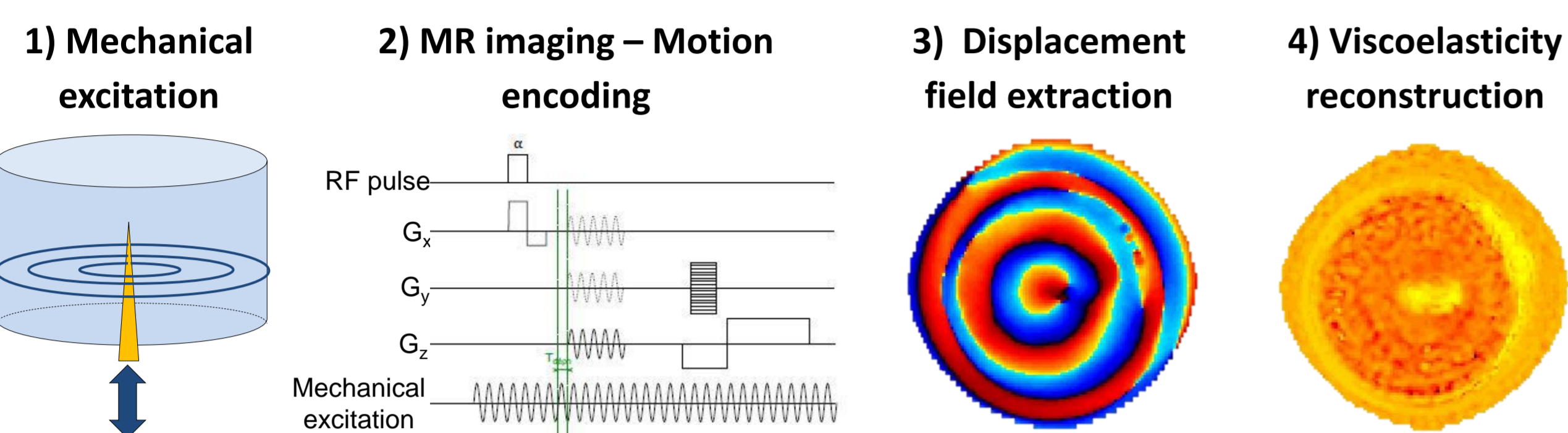
Development of an elastography bench for MR exam of small samples

Mathilde Bigot¹, Hugo Dorez¹, Céline Mandon², Christophe Marquette², Kevin Tse Ve Koon¹, Pauline M. Lefebvre¹, Denis Grenier¹, Hamza Raki^{1,3}, Fabien Chauveau⁴, Olivier Beuf¹, Simon A. Lambert¹

¹Univ. Lyon, INSA-Lyon, Université Claude Bernard Lyon 1, UJM-Saint Etienne, CNRS, Inserm, CREATIS UMR 5220, U1206, FF-69000, LYON, France; ²Université Lyon 1, CNRS, INSA, CPE-Lyon, ICBMS, UMR 5246, 43 Boulevard du 11 Novembre 1918, 69622 Villeurbanne Cedex, France; ³General Electric Healthcare, Buc, France; ⁴Lyon Neuroscience Research Center, CNRS UMR5292, INSERM U1028, Université Lyon 1, Lyon, France.

Introduction

Extraction of biomechanical parameters for small samples via **Magnetic Resonance Elastography (MRE)**:



Need of: - Wave amplitude > μm
 - High signal to noise ratio (SNR) with high resolution
 - Low cost and handy design

Methods

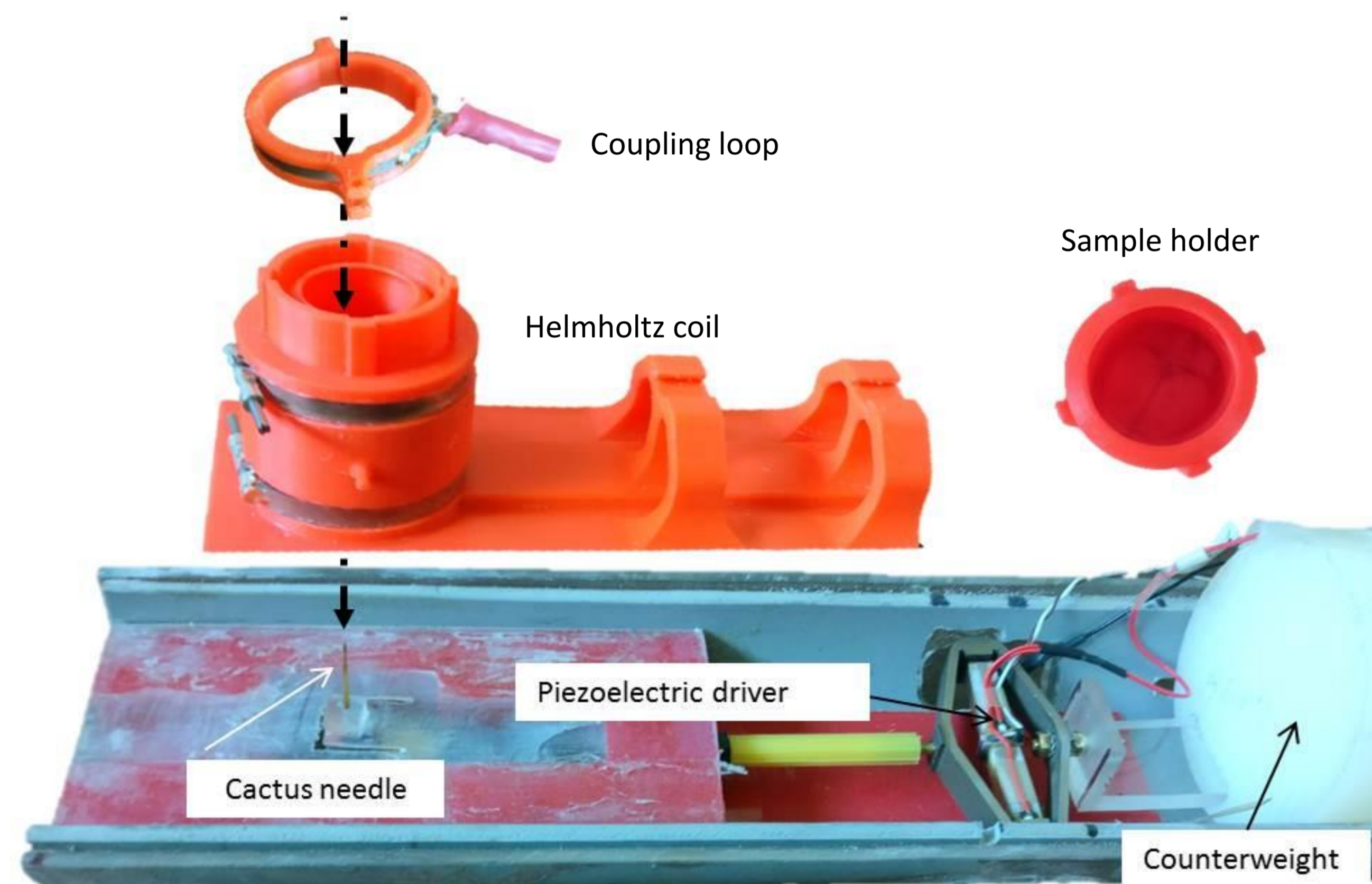


Figure 1. 3D-printed device on top of a classical elastography setup:

- Helmholtz coil ($\varnothing = 36 \text{ mm}$):
Tuning: capacity trimmers
Matching: Coupling loop (inductive coupling)
- Sample holder gliding into the coil

Acquisition on a Bruker 4.7 T scanner for fibrin and agarose 1,5% gels and an *ex vivo* rat brain:

Acquisition parameters	FLASH 3D	Turbo spin echo (MRE)
TR/TE (ms)	15/6	2000/18 - 24
Voxel size (mm)	0.312x0.312x0.625	0.312x0.312x0.625
FOV (mm)	40 x 40	40 x 40
Flip angle (°)	15	X
Reception bandwidth (kHz)	50	50
Acquisition time (min)	2	17
Excitation frequency (Hz)	X	600 - 1000

Table 1. Acquisition parameters for an anatomical (FLASH) sequence and a conventional spin echo based elastography sequence

Results

Figure 2. SNR worked out on central slices of a **FLASH sequence** for a bioengineered gel and a rat brain:

$\text{SNR}_{\text{gel}} = 83$
 $\text{SNR}_{\text{brain}} = 64$

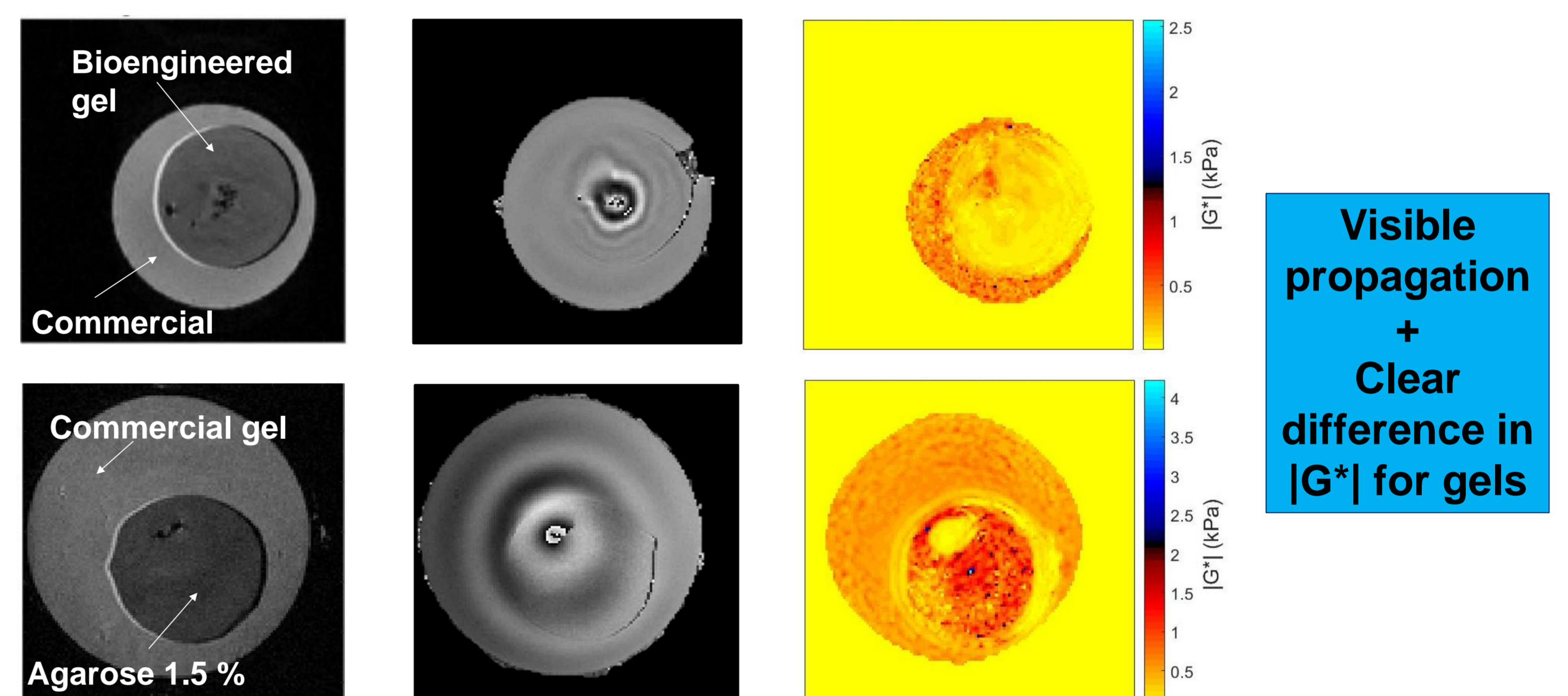
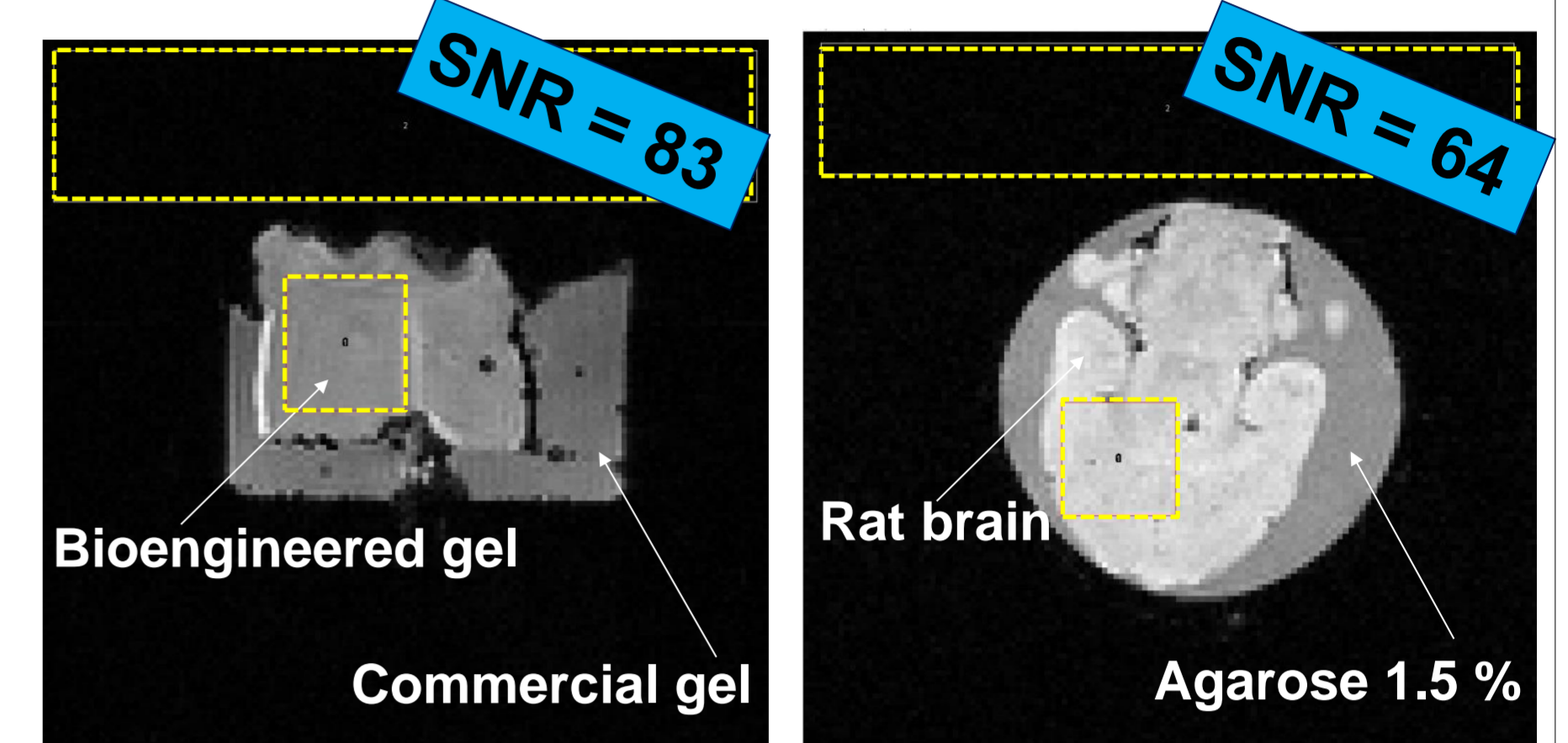


Figure 3. Magnitude, phase and reconstructed magnitude of the complex shear modulus $|G^*|$ obtained by MRE at 600 Hz for the bioengineered gel and an 1.5% agarose gel, both embedded in a commercial gel. Total displacement magnitude $\langle A \rangle$ was $3.8 \mu\text{m}$ for the first gel and $25.5 \mu\text{m}$ for the agarose gel after bench improvement. $|G^*| = 1.4 \pm 0.5$ and $7.3 \pm 3.9 \text{ kPa}$, respectively.

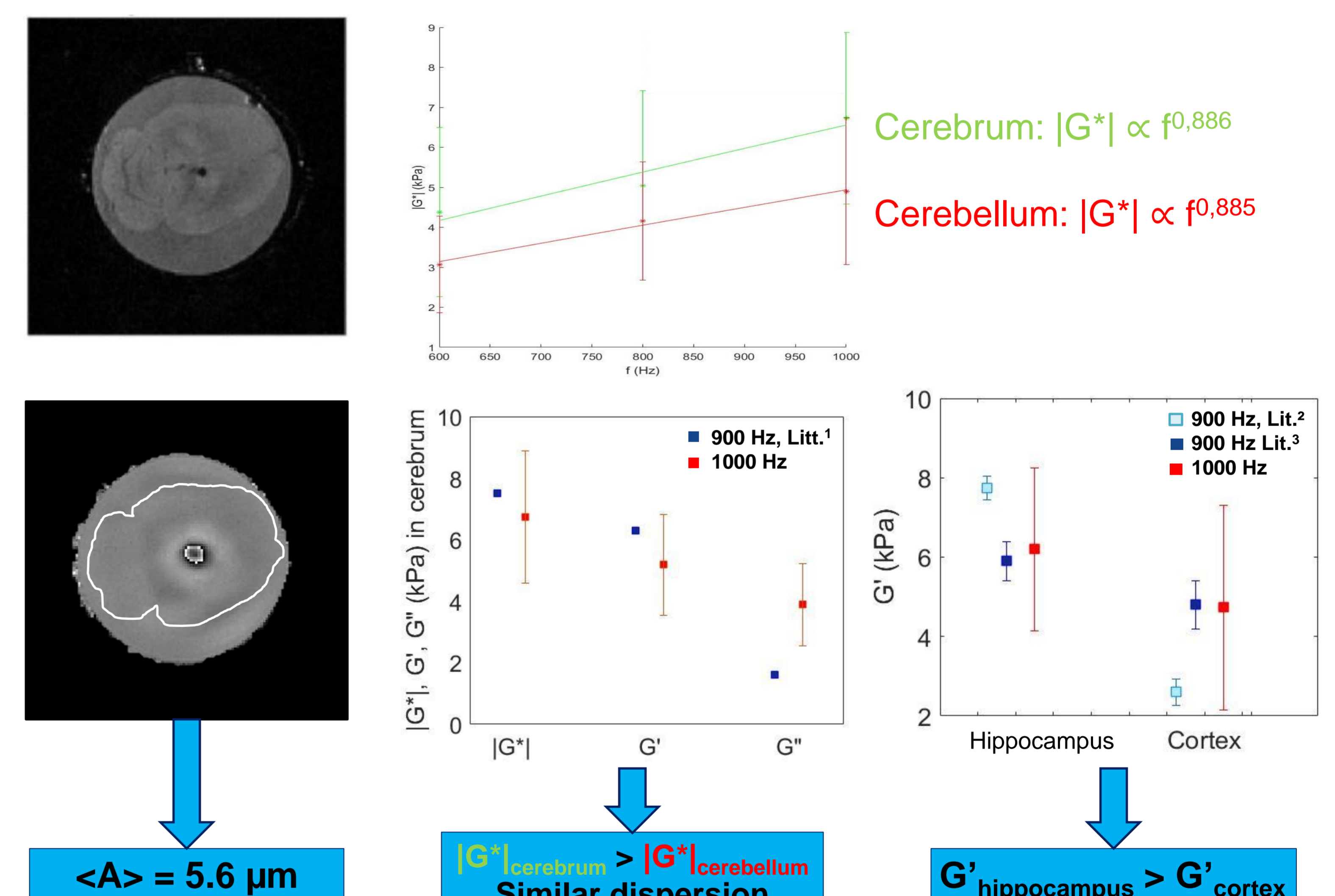


Figure 4. Magnitude and phase images of a fresh *ex vivo* rat brain for an excitation frequency of 600 Hz. Comparison of extracted biomechanical parameters G' (conservation modulus), G'' (loss modulus) and $|G^*|$ with literature data

Discussion and Conclusion

Cost < 150 € ✓
 Easy sample management ✓
 Displacement amplitude ✓
 Brain data in agreement with literature ✓

Planned **improvements**, in order to enable:

- imaging of samples containing living cells: heating and its monitoring + gas arrival
- further improvement the SNR: N_2 arrival for coil cooling
- easier matching: lever system for the coupling loop.

Perspectives: *ex vivo* acquisitions on rodent brains with neurological lesions (fibrillar aggregates of proteins, demyelination).

Acknowledgement: This work was supported by the LABEX PRIMES (ANR-11-LABX-0063) of Université de Lyon, within the program « Investissements d'Avenir » (ANR-11-IDEX-0007) operated by the French National Research Agency (ANR). PEPS CNRS "Balanced".

References: (1) Millward *et al.*, NMR Biomed., vol 28 2015. (2) Munder *et al.*, J. Magn. Reson. Imaging, 2017. (3) Boulet *et al.*, J. Neurosci. Methods, vol 201, 2011.

Contact: Mathilde.Bigot@creatis.insa-lyon.fr

