



HAL
open science

Twelve new QTLs for phenological traits in *Vitis vinifera* L.

Agnes Doligez, Yves Bertrand, Pilar Gago, Michel Grolier, Gilles Berger, Jean Francois Ballester, Timothée Flutre, S. Dias, Patrice This, Jean-Pierre Peros

► To cite this version:

Agnes Doligez, Yves Bertrand, Pilar Gago, Michel Grolier, Gilles Berger, et al.. Twelve new QTLs for phenological traits in *Vitis vinifera* L.. 12. International Conference on Grapevine Breeding and Genetics, Jul 2018, Montpellier, France. hal-01857674

HAL Id: hal-01857674

<https://hal.science/hal-01857674>

Submitted on 5 Jun 2020

HAL is a multi-disciplinary open access archive for the deposit and dissemination of scientific research documents, whether they are published or not. The documents may come from teaching and research institutions in France or abroad, or from public or private research centers.

L'archive ouverte pluridisciplinaire **HAL**, est destinée au dépôt et à la diffusion de documents scientifiques de niveau recherche, publiés ou non, émanant des établissements d'enseignement et de recherche français ou étrangers, des laboratoires publics ou privés.

Changes in phenology are a major response to **climate change** in present cultivars. Therefore, we need to account for these traits in **breeding** programs to maintain yield and quality.

As in other perennials, many phenology **QTLs** have already been detected in grapevine, most often explaining a **low proportion of total variance**, but occasionally up to 40-70% (Costantini et al 2008, Duchêne et al 2012, Grzeskowiak et al 2013, Zyprian et al 2016). Very few colocalized between studies.

Our objective was to better understand genetic determinism of phenological stages in *V. vinifera* L., by searching for QTLs and candidate genes in three unrelated populations.

Material and methods

Plant material

This study was based on **three pseudo-F1 mapping populations**, MTP3140 (N=139), MTP3234 (N=174) and SG (N=191), planted at the Montpellier SupAgro Chapitre Research Vineyard, Hérault, France.

Phenotyping

Six developmental stages were recorded in 3-6 years, according to the modified E-L system (Coombe 1995): **budburst** (BB), **flowering** beginning (FB), flowering end (FE), **veraison** beginning (VB), véraison end (VE), **ripening** (R). Each date and interval between dates was converted into day of the year (**DOY**, the number of days from January 1st). Heat sums were also calculated using the Grapevine Flowering Veraison (**GFV**) model (Parker et al 2011).

Statistical analyses

The linear mixed model best fitting the data was selected according to the Bayesian Information Criterion (BIC). All tested models included a random genotypic effect, and possibly some fixed effects and their interaction with genotype. **Broad-sense heritability** was estimated for each trait from variance components.

QTL detection

It was performed on each consensus and parental map (Doligez et al 2006, 2010, 2013) with the **R/qtl** package, using the Best Linear Unbiased Predictors (**BLUPs**) of genotypic effects. Multiple QTL regression was carried out with the "stepwiseqtl" function following Huang et al. (2012), using a genome-wide error rate of 0.05.

Search for candidate genes

Positional candidate genes located in the confidence interval of QTLs was obtained from **RefSeq NCBI** 12X.0-based *Vitis vinifera* Annotation Release 101, mapped on the PN40024 12X.2 reference genome sequence.

Phenotypic data

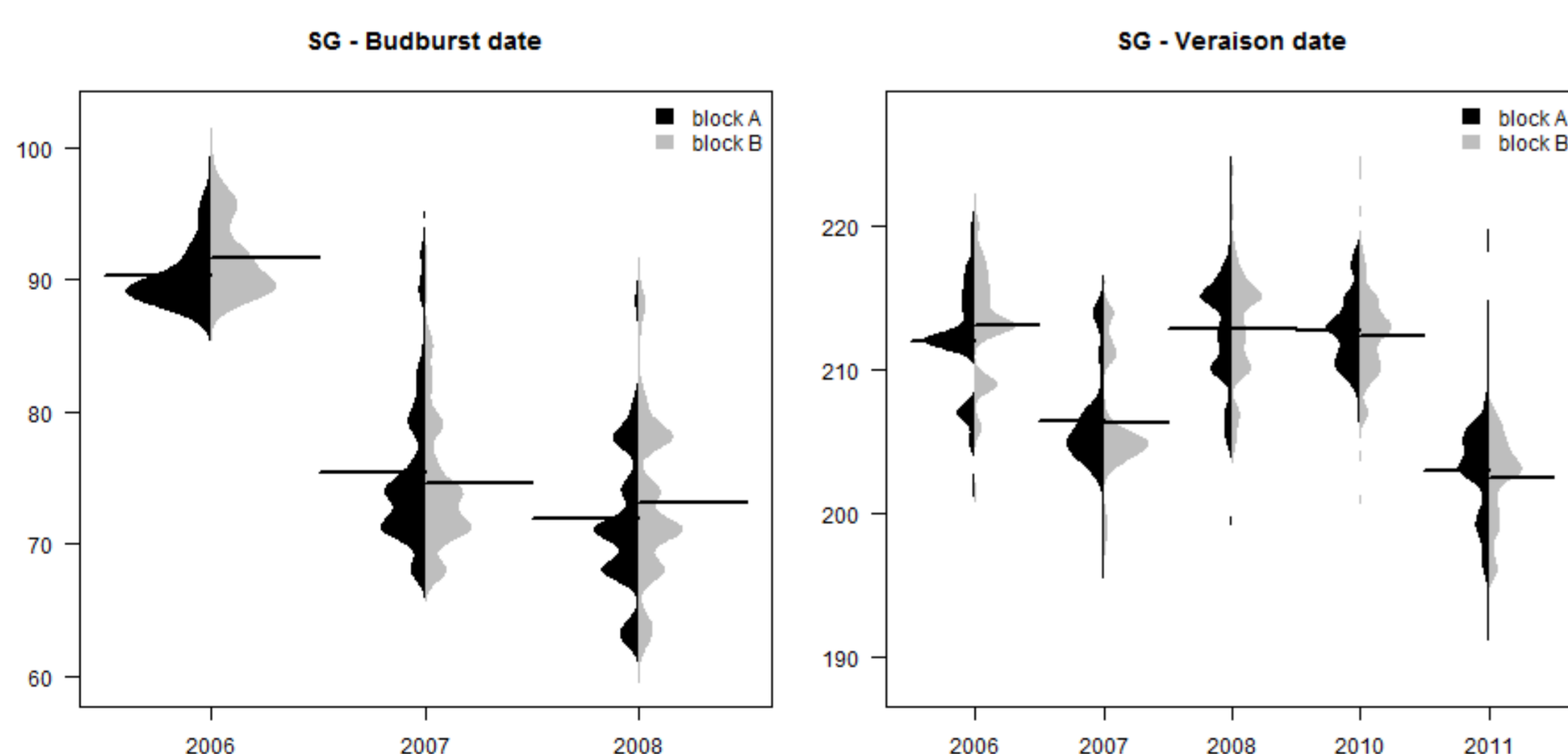


Fig 1. Distribution of some raw phenotypic data in population SG (Syrah x Grenache). Dates are in DOY.

Large phenotypic and genotypic correlations (≥ 0.6) were observed between the DOY and GFV models for most dates and intervals.

Trait (in DOY)	MTP3140	MTP3234	SG
Budburst	0.66	0.50	0.75
Flowering	0.71	0.68	0.77
Veraison	0.85	0.76	0.93
Ripening	0.66	0.66	0.69
Budburst - Flowering	0.52	0.35	0.39
Flowering - Veraison	0.85	0.77	0.72
Veraison - Ripening	0.40	-	0.36
Budburst - Veraison	0.73	0.65	0.72
Budburst - Ripening	0.62	-	0.54
Flowering - Ripening	0.62	-	0.62

Table 1. Broad-sense heritability on an inter-annual genotype mean basis.

12 new repeated QTLs

A total of 18 QTLs were found in at least 2 years (14 on consensus maps and 4 additional ones on parental maps) in 2 of the 3 populations, mainly for budburst and veraison dates, explaining up to 35% of total variance. Twelve of them were new QTLs and 6 were confirmed ones.

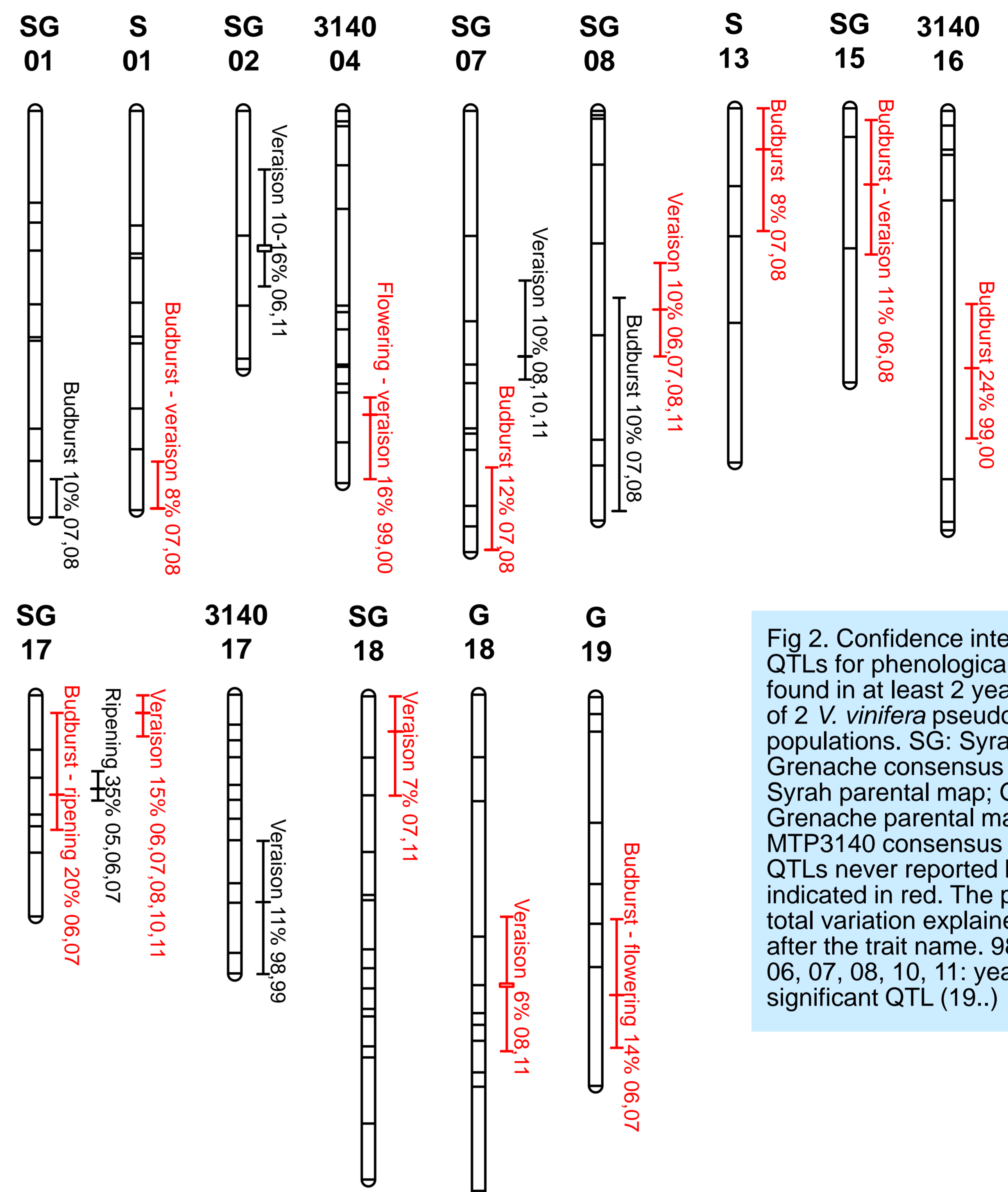


Fig 2. Confidence intervals of QTLs for phenological traits found in at least 2 years in one of 2 *V. vinifera* pseudo-F1 populations. SG: Syrah x Grenache consensus map; S: Syrah parental map; G: Grenache parental map; 3140: MTP3140 consensus map. QTLs never reported before are indicated in red. The percent of total variation explained is given after the trait name. 98, 99, 00, 06, 07, 08, 10, 11: years with significant QTL (19..)

Candidate genes

Several candidate genes potentially involved in phenology-related trait variations were found near LOD peaks of these QTLs. In particular, for budburst-related traits, based on the review by Abbott et al (2015) for perennials, we found a protein homolog of **timeless** (involved in circadian rhythm), a **CONSTANS-LIKE** zinc finger protein (transcription factor promoting flowering in long days), and an **indole-3-acetic acid-amido synthetase** GH3.17-like (involved in biosynthesis of auxin). For veraison, we found a bidirectional sugar transporter **SWEET** recently shown to play an important role in berry maturation (Charles Romieu, personal communication).

Our results confirm the highly **polygenic** nature of phenology-related traits, show that some QTLs are stable across years, and yield potentially very interesting candidate genes for further studies on the molecular determinism of variations in phenological stages.

Acknowledgements

This work was supported by the Institut National de la Recherche Agronomique, the European Union [grant numbers ICA4-2001-10065 MASTER project, 513960 FLAVO project] and the French National Research Agency [grant number 2010-14 ANR-09-GENM-024 Vit-Sec project].

References

- Abbott et al. 2015. The Genetic Control of Bud-Break in Trees. In *Land Plants - Trees*. Volume 74. Edited by Plomion C, AdamBlondon AF; 201-228: *Advances in Botanical Research*.
- Coombe. 1995. Adoption of a system for identifying grapevine growth stages. *Aust J Grape Wine Res* 1:100-110.
- Costantini et al. 2008. Berry and phenology-related traits in grapevine (*Vitis vinifera* L.): from Quantitative Trait Loci to underlying genes. *BMC Plant Biol* 8:38.
- Doligez et al. 2006. QTLs for muscat flavor and monoterpene odorant content in grapevine (*Vitis vinifera* L.). *Molecular Breeding* 18:109-125.
- Doligez et al. 2010. QTLs for fertility in table grape (*Vitis vinifera* L.). *Tree Genetics & Genomes* 6:413-422.
- Doligez et al. 2013. New stable QTLs for berry weight do not colocalize with QTLs for seed traits in cultivated grapevine (*Vitis vinifera* L.). *BMC Plant Biol* 13:217.
- Duchêne et al. 2012. Towards the adaptation of grapevine varieties to climate change: QTLs and candidate genes for developmental stages. *Theor Appl Genet* 124:623-635.
- Grzeskowiak et al. 2013. Candidate loci for phenology and fruitfulness contributing to the phenotypic variability observed in grapevine. *Theor Appl Genet* 126:2763-2776.
- Huang et al. 2012. Dissecting genetic architecture of grape proanthocyanidin composition through quantitative trait locus mapping. *BMC Plant Biol* 12:30.
- Parker et al. 2011. General phenological model to characterise the timing of flowering and veraison of *Vitis vinifera* L. *Aust J Grape Wine Res* 17:206-216.
- Zyprian et al. 2016. Quantitative trait loci affecting pathogen resistance and ripening of grapevines. *Molecular Genetics and Genomics* 291:1573-1594.