



HAL
open science

Long-term records of trace metal elements in core sediments: anthropogenic impacts in the Eure river watershed

Thomas Gardes, Maxime Debret, Yoann Copard, Edouard Patault, Julien Deloffre, Stéphane Marcotte, Anne-Lise Develle, Pierre Sabatier, Eric Chaumillon, Thibault Coulombier, et al.

► **To cite this version:**

Thomas Gardes, Maxime Debret, Yoann Copard, Edouard Patault, Julien Deloffre, et al.. Long-term records of trace metal elements in core sediments: anthropogenic impacts in the Eure river watershed. American Geophysical Union (AGU) Fall Meeting, Dec 2017, Nouvelle-Orléans (LA), United States. . hal-01855428

HAL Id: hal-01855428

<https://hal.science/hal-01855428>

Submitted on 7 Aug 2018

HAL is a multi-disciplinary open access archive for the deposit and dissemination of scientific research documents, whether they are published or not. The documents may come from teaching and research institutions in France or abroad, or from public or private research centers.

L'archive ouverte pluridisciplinaire **HAL**, est destinée au dépôt et à la diffusion de documents scientifiques de niveau recherche, publiés ou non, émanant des établissements d'enseignement et de recherche français ou étrangers, des laboratoires publics ou privés.

LONG-TERM RECORDS OF TRACE METAL ELEMENTS IN CORE SEDIMENTS: ANTHROPOGENIC IMPACTS IN THE EURE RIVER WATERSHED

THOMAS GARDES^{1,2,*}

MAXIME DEBRET¹, YOANN COPARD¹, EDOUARD PATAULT¹, JULIEN DELOFFRE¹, STÉPHANE MARCOTTE³, ANNE-LISE DEVELLE⁴, PIERRE SABATIER⁴, ERIC CHAUMILLON⁵, THIBAUT COULOMBIER⁵, SIDONIE REVILLON⁶, JEAN NIZOU⁶, YAN LABERDESQUE^{1,2}, FLORENCE PORTET-KOLTALO²

¹Normandie Univ, Rouen, UNIROUEN, UNICAEN, CNRS, M2C, FED-SCALE, Rouen, France.

²Normandie Univ, Rouen, UMR CNRS 6014 COBRA, Evreux, France.

³INSA of Rouen, Normandie Univ, UMR CNRS 6014 COBRA, Saint-Etienne-du-Rouvray, France.

*Corresponding author: thomas.gardes2@univ-rouen.fr

⁴University of Savoie Mont Blanc, UMR CNRS 5204 EDYTEM, Le Bourget du Lac, France.

⁵University of La Rochelle, UMR CNRS 7266 LIENSs, La Rochelle, France.

⁶IFREMER, IUEM, Brest, France.

INTRODUCTION

General context

The Seine River watershed is historically known for important Trace Metal Elements (T.M.E) anthropogenic contaminations, from various human pressures except mining activities. The Eure River watershed was poorly studied in the past, although there is one of main tributary of the Seine River. Recently, it was highlighted that lead contamination recorded in Seine River partially came from the Eure River.

The OSS 276 Project: Observatory of the Seine Sediments in the Eure River and the Seine River

The main aim of the OSS 276 project is to fill the gap of knowledge concerning the Eure River watershed.

This part of the study is focused on the potential anthropogenic impacts suffered by the Eure River.



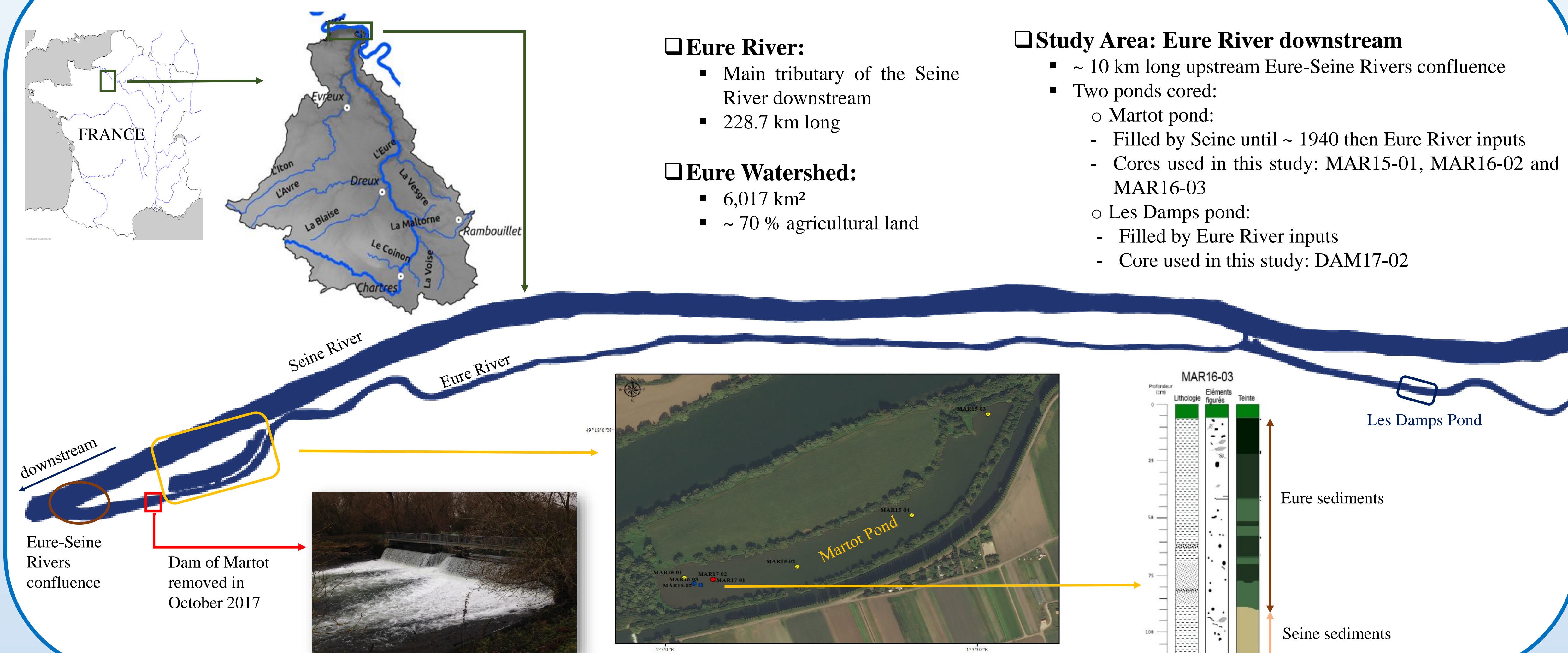
Uniqueness of the OSS 276 Project

The hydro-sedimentary inputs from the Eure River watershed were blocked ~ 300 m upstream of the confluence with the Seine River by a small obstacle called the Dam of Martot. Built during the last century, this dam was removed recently. Observing and understanding the impact of the dam removal on hydro-sedimentary transfers, re-suspension and transfers of contaminated sediments is one of the aim part of this project.

Trace Metal Elements (T.M.E)

In fluvial systems, T.M.E are majority linked to the Suspended Particulate Matter (S.P.M), especially the < 63 µm fraction. Their potential toxicity is well established and for this project it was decided in this project to work with metals (Cadmium : Cd, Chrome: Cr, Copper: Cu, Mercury: Hg, Nickel: Ni, Lead: Pb), and metalloid (Arsenic: As) elements listed "priority substances" by the European Water Framework Directive.

STUDY AREA: THE EURE RIVER WATERSHED



Eure River:

- Main tributary of the Seine River downstream
- 228.7 km long

Eure Watershed:

- 6,017 km²
- ~ 70 % agricultural land

Study Area: Eure River downstream

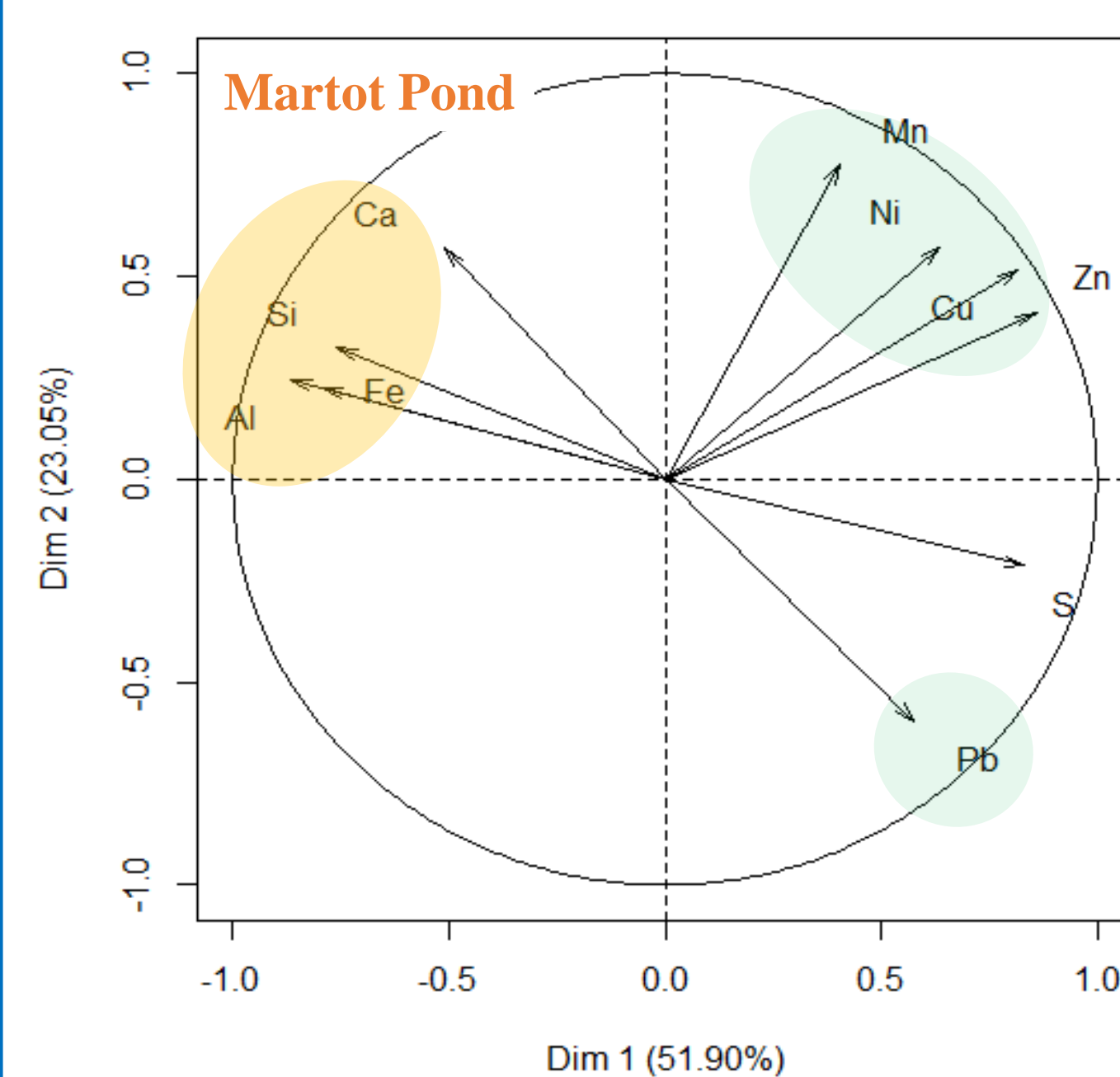
- ~ 10 km long upstream Eure-Seine Rivers confluence
- Two ponds cored:
 - Martot pond:
 - Filled by Seine until ~ 1940 then Eure River inputs
 - Cores used in this study: MAR15-01, MAR16-02 and MAR16-03
 - Les Damps pond:
 - Filled by Eure River inputs
 - Core used in this study: DAM17-02

T.M.E IN SEDIMENTARY CORES: HIGHLIGHT THE INDUSTRIAL PAST OF THE EURE RIVER WATERSHED

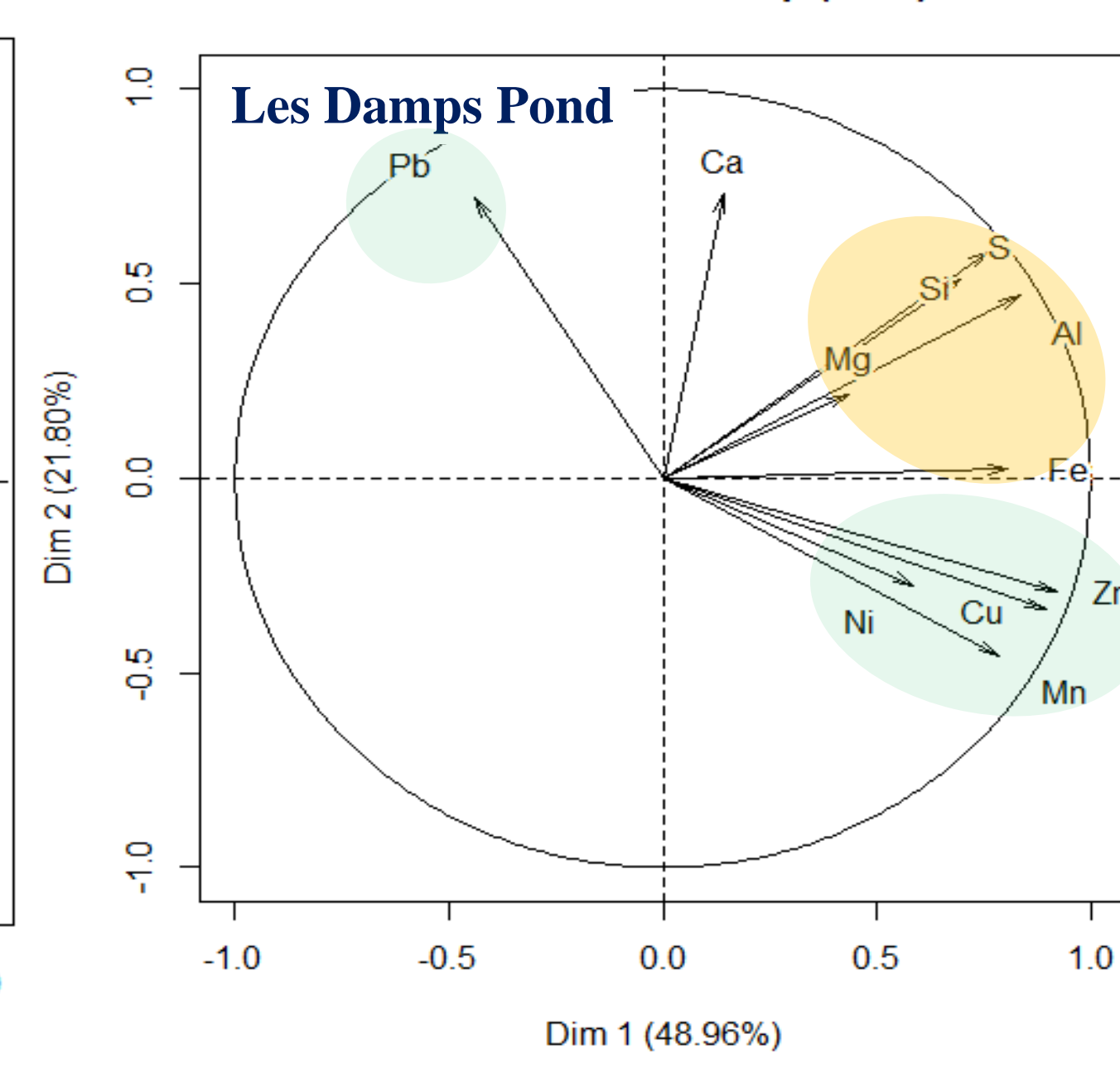
Principal Component Analysis (PCA):

- XRF Core Scanner data
- Sedimentary cores used:
 - Martot Pond: MAR15-01
 - Les Damps Pond: DAM17-02

Variables factor map (PCA)



Variables factor map (PCA)



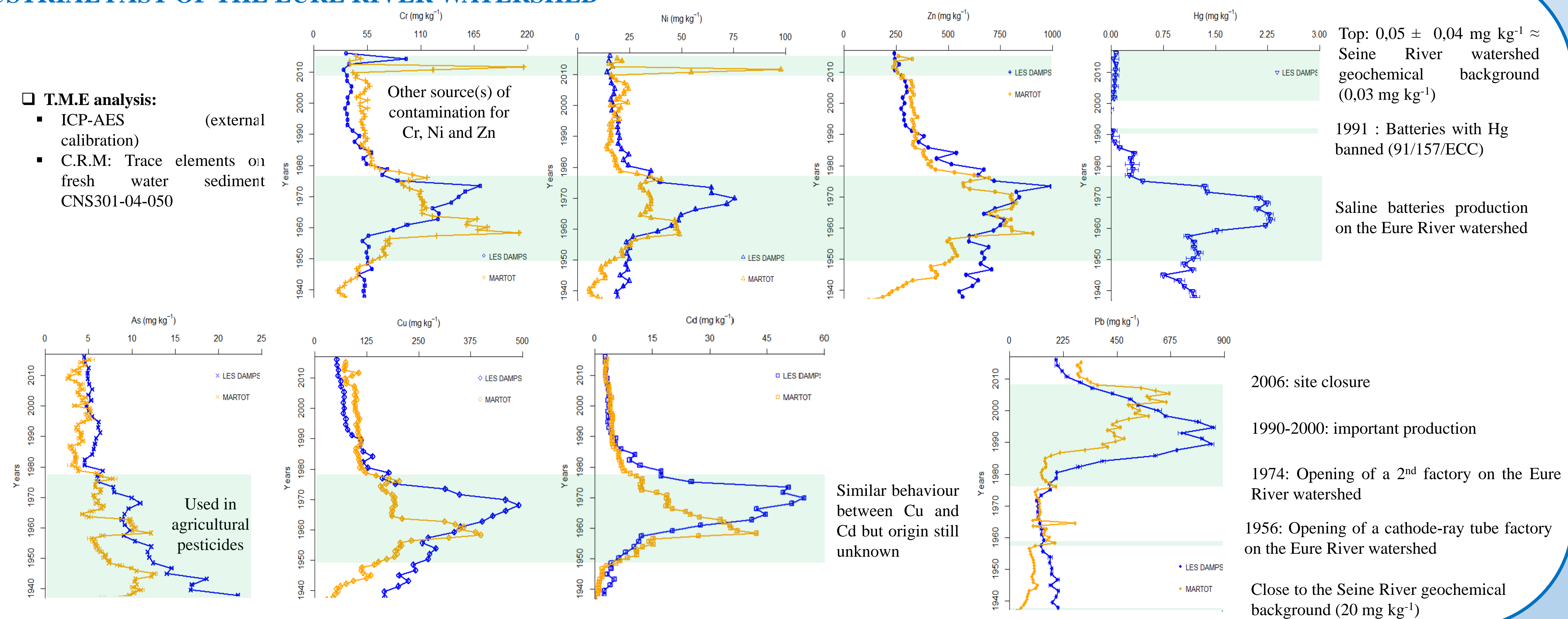
- Legend:
 - Sedimentary inputs (yellow circle)
 - Anthropogenic inputs (green circle)

For Martot and Les Damps Ponds:

- T.M.E came from non-natural sources
 - Common origins for Ni, Cu, Zn.
 - Pb: one anthropogenic sources.

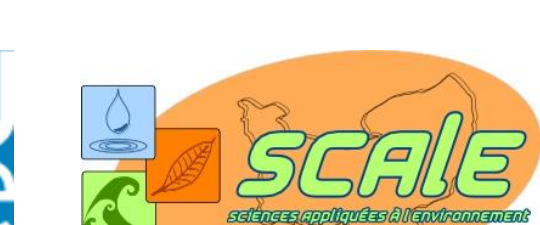
T.M.E analysis:

- ICP-AES calibration (external sediment)
- C.R.M: Trace elements on fresh water sediment CNS301-04-050



CONCLUSION & PROSPECTS

- Sedimentary cores from Eure River ponds showed several decades of metallic contamination from multiple anthropogenic origins.
- The origins of contamination (Pb, Hg, etc.) are determined, nevertheless there is still other past and recent contaminations sources to identify
- After the dam removal, it becomes important to study the potential remobilization of contaminated sediments from ponds and Eure River's channel.



New Orleans
11-15 Dec. 2017