



**HAL**  
open science

## Numerical analysis of the food web of an intertidal mudflat ecosystem on the Atlantic coast of France

Delphine Leguerrier, Nathalie Niquil, Nicolas Pierre Boileau, Jadwiga Rzeznik, Pierre-Guy Sauriau, Olivier Lemoine, Cédric Bacher

► **To cite this version:**

Delphine Leguerrier, Nathalie Niquil, Nicolas Pierre Boileau, Jadwiga Rzeznik, Pierre-Guy Sauriau, et al.. Numerical analysis of the food web of an intertidal mudflat ecosystem on the Atlantic coast of France. *Marine Ecology Progress Series*, 2003, 246, pp.17 - 37. 10.3354/meps246017 . hal-01854490

**HAL Id: hal-01854490**

**<https://hal.science/hal-01854490v1>**

Submitted on 10 Jun 2021

**HAL** is a multi-disciplinary open access archive for the deposit and dissemination of scientific research documents, whether they are published or not. The documents may come from teaching and research institutions in France or abroad, or from public or private research centers.

L'archive ouverte pluridisciplinaire **HAL**, est destinée au dépôt et à la diffusion de documents scientifiques de niveau recherche, publiés ou non, émanant des établissements d'enseignement et de recherche français ou étrangers, des laboratoires publics ou privés.

# Numerical analysis of the food web of an intertidal mudflat ecosystem on the Atlantic coast of France

Delphine Leguerrier<sup>1</sup>, Nathalie Niquil<sup>1,\*</sup>, Nicolas Boileau<sup>2</sup>, Jadwiga Rzeznik<sup>1,3,4</sup>,  
Pierre-Guy Sauriau<sup>5</sup>, Olivier Le Moine<sup>6</sup>, Cédric Bacher<sup>5</sup>

<sup>1</sup>Laboratoire de Biologie et Environnement Marins, EA 3168, Université de La Rochelle, Pôle Sciences et Technologie, avenue Michel Crépeau, 17042 La Rochelle Cedex 1, France

<sup>2</sup>Ligue pour la Protection des Oiseaux (LPO), Réserve Naturelle de Moëze-Oléron, Plaisance, 17708 Saint-Froult, France

<sup>3</sup>ESA 8044 CNRS-BIM, Muséum National d'Histoire Naturelle, 57 rue Cuvier 75231 Paris, France

<sup>4</sup>University of Gdansk, Institute of Oceanography, Marine Biology and Ecology Department, Al. Pilsudskiego 46, 81-378 Gdynia, Poland

<sup>5</sup>Centre de Recherche sur les Ecosystèmes Marins et Aquacoles (CREMA/UMR10 CNRS-IFREMER), BP 5, 17137 L'Houmeau, France

<sup>6</sup>Laboratoire Conchylicole Poitou-Charentes (LCPC), IFREMER, BP 133, 17390 La Tremblade, France

**ABSTRACT:** Food web modelling is an ideal way to describe ecosystems, because it accounts for the totality of the relationships between its various components. One difficulty of such an approach, however, lies in the lack of data and information about some ecological relationships, resulting in under-defined systems. Inverse analysis can serve to complete steady-state food webs where the number of direct flow measurements is insufficient relative to the actual number of flows. We applied this method to the intertidal mudflat ecosystem of Brouage (eastern Marennes-Oléron Bay, SW France) and estimated the annual average carbon flows between the compartments of a coupled benthic and pelagic trophic food web from primary producers (microphytobenthos and phytoplankton) to top predators (fish and birds). The resulting network was very sensitive to the primary production of the microphytobenthos which was the most important flow in the system. Sensitivity analyses demonstrated the need for additional data on the nekton, pelagic protozoa, and bacterial compartments. The resulting network showed high bacterial activity, but indices resulting from network analysis showed low cycling in comparison with other ecosystems. The meiofauna had a small biomass, but constituted a very active compartment compared to the macrofauna. Bird production was limited by macrofaunal production. Macrofaunal production reached the maximum allowed by the analysis. The intertidal mudflat ecosystem at Brouage is dominated by benthic production (including benthic primary producers, secondary producers, and predators) with an input of phytoplankton primary production.

**KEY WORDS:** Carbon flow · Inverse analysis · Food web · Network analysis

Resale or republication not permitted without written consent of the publisher

## INTRODUCTION

Marennes-Oléron Bay (MOB) is situated between the French Atlantic mainland and Oléron Island. It is the most important site for oyster production in Europe (Gouletquer & Héral 1996) and it harbors a variety of other commercial activities, including fisheries and tourism. MOB is a macrotidal system, with a tidal

range of 6 m during spring tides. It is influenced by continental inputs, mainly from the rivers Charente (Ravaill et al. 1988, Soletchnik et al. 1998) and Gironde (Dechambenoy et al. 1977). A sector of MOB constitutes a bird reserve that has become since 1995 the major French landing site for shorebirds, with 45 000 to 65 000 birds in winter, and maybe 200 000 ind. yr<sup>-1</sup> (Deceunink 1997, Deceunink & Maheo 1998; see also

www.lpo-birdlife.asso.fr/etudes/wetlands/biblio.htm). According to Héral et al. (1989), the maximum carrying capacity of MOB (corresponding to an oyster production of  $42\,500\text{ t yr}^{-1}$ ) has been attained; a shellfish culture has reached its carrying capacity when total bivalve biomass ceases to increase (Odum 1983 in Dame & Prins 1998).

In the past, most ecological studies focussed on the oysters in MOB (Héral et al. 1989). Since the emergence of ecosystem management concepts such as sustainable development and nature conservation, research in the Bay has been extended to consider the entire ecosystem. The Brouage mudflat is situated on the eastern part of the bay along the mainland shore (Fig. 1). It is an important experimental site due to its exceptional morpho-sedimentological features (Bassoullet et al. 2000) and high primary productivity (Guarini et al. 1998), and it has become the best-studied mudflat of MOB. Pelagic and benthic habitats interact through physical processes such as sedimentation and resuspension which influence the behaviour of the organisms (Blanchard et al. 1998) and the trophic relationships between benthic and pelagic fauna. Nearly all the components of the Brouage ecosystem have been studied and, while not all of the communities have been formally described at the ecosystem level, usable information exists on most of the benthic and pelagic communities. However, no synthesis has been made between them to date, and there is no overall description of ecosystem functioning.

An ideal way to describe such an ecosystem is by simulating its trophic network to create an overview of its functioning. The functioning of an ecosystem can be investigated with the help of dynamic models (which are often limited by the need for *a priori* knowledge and by mathematical problems in solving large systems of differential equations) and of static models (which have the disadvantage of ignoring fluctuations over time). The technique of inverse analysis used in this study is designed to compensate for insufficiency of data on the ecosystem (Mercier 1986, Vézina & Platt 1988, Vézina & Pace 1994). It estimates unknown flows by assuming a steady state, and it incorporates various data such as measured flows, physiological rates and biomasses into the model.

We studied the average annual state of the Brouage intertidal mudflat ecosystem assuming that the system is in a steady state (i.e. there is no organic matter accumulation or loss in any compartment) using the inverse analysis method. To facilitate comparisons with other sites, we chose carbon as the unit of exchange between

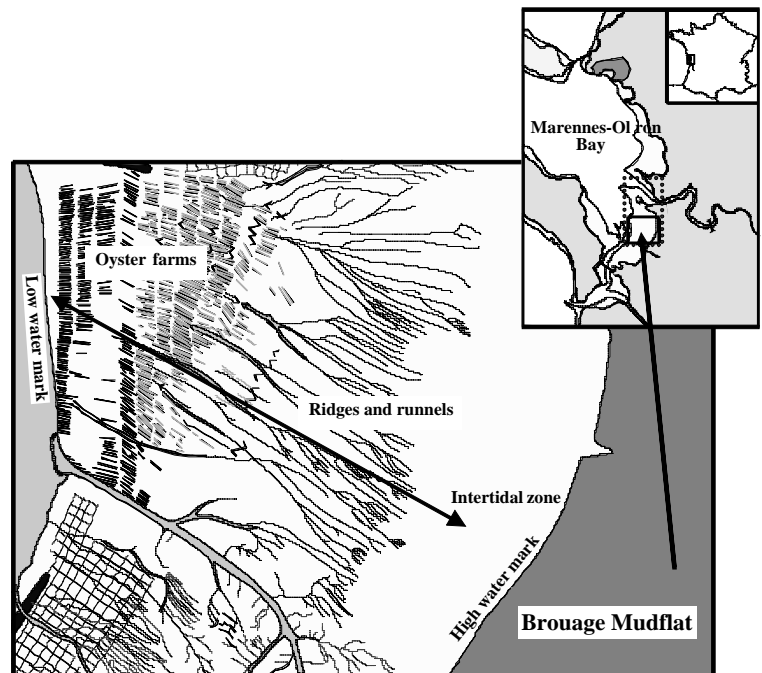


Fig. 1. Marennes-Oléron Basin on the French Atlantic Coast. Dotted line indicates Brouage mudflat. The study site includes areas of shell fish culture (map: P. Richard)

compartments and we normalized calculated values to unit benthic surface area. Interpretation of the complex trophic network calculated by inverse analysis is based on techniques from network analysis and uses indices as defined in Ulanowicz (1986, 1997).

## MATERIALS AND METHODS

**Study site.** The eastern part of MOB is divided into 2 large intertidal sectors. the southern one is the Brouage mudflat (Fig. 1) characterised by a gradual slope (1:1000) and a very large tidal area covered with prominent surface structures described as 'ridges and runnels' (Gouleau et al. 2000). Current speeds in the bay vary from  $0.2$  to  $0.6\text{ m s}^{-1}$  (Bassoullet et al. 2000, Le Hir et al. 2000). Residual currents from river inputs flow from north to south in the bay (Bacher 1989).

**Data and parameters.** Results of local studies on the Brouage mudflat or the MOB were used whenever available. When no data were available, values from similar ecosystems (e.g. Wadden Sea and English Channel) were used as estimates. The compartments, associated data, and parameters of the model are compiled in Tables 1 to 4.

**Primary production:** Microphytobenthic production rates were estimated on the basis of both experiments and models (Blanchard et al. 1997, Guarini et al. 1999).

During daytime emersion periods the microalgae migrate to the surface of the sediment and only this surface biofilm is responsible for the primary production (Guarini et al. 1999). The seasonal rate  $P_{\max}$  (net production) used in the model (Table 2, Eq. 17) was measured on site (Blanchard et al. 1997). Between 30 and 70 % of the biofilm biomass ( $137$  to  $319 \text{ g C m}^{-2} \text{ yr}^{-1}$ ; Guarini pers. comm.) is resuspended during high tide, and the remainder sinks back into the sediment (Guarini et al. 2000) (Table 3, inequalities [Ineqs.] 1 & 2).

In the water column, the average chl *a* concentration is equivalent to  $0.66 \text{ mg C l}^{-1}$  (Sautour & Castel 1993a, 1998). Turbidity is high in MOB, so light penetration is reduced and phytoplankton production quickly decreases with increasing depth (Cloern 1987, Haney &

Jackson 1996). However, low levels of light penetration do not preclude photosynthesis in the water column (Joint & Pomroy 1981, 1993, Fichez et al. 1992, Shaw & Purdie 2001). The net primary production was forced on the basis of values from the English Channel where the production/biomass rate (P/B) ranges from  $30$  to  $40 \text{ yr}^{-1}$  (Ménésquen & Hoch 1997; see Table 3, Ineqs. 3 & 4). We assumed that 5 to 30 % of the net primary production is lost to respiration (Vézina & Platt 1988; see Table 3, Ineqs. 5 to 8).

**Benthic and pelagic bacteria:** Garet (1996) estimated that the carbon biomass of benthic bacteria was 51 % of the microphytobenthic biomass, and that it remained constant during the year. Benthic bacterial production varied from  $41$  to  $51 \text{ yr}^{-1}$  (Table 3, Ineq. 14 & 15). Res-

Table 1. Compartments of the Brouage food web. Biomass values were measured outside of the oyster farms, except for data on the 'cultivated oysters' compartment. Biomass data taken from other ecosystems are in parentheses; nd: not determined

Compartment	Abbr.	Description	Biomass ( $\text{g C m}^{-2}$ )
<b>Terrestrial</b>			
Birds	pbd	Shorebirds + common shelducks	nd
<b>Benthic</b>			
Cultivated oysters	bco	Oyster farms cover 18% of the study site, biomass was measured at the farms	21.1
Microphytobenthos	bph	Benthic primary producers	3.8
Benthic detritus	bdt	Particulate organic matter	nd
Benthic bacteria	bbc	Free or attached bacteria	1.94
Meiofauna	bmi	Benthic organisms ( $63 \mu\text{m} - 1 \text{ mm}$ )	0.37
Predators	bpr	Omnivorous and carnivorous benthic macrofauna	0.24
Facultative suspension feeders	bfs	Benthic macrofauna ( $>1 \text{ mm}$ ) classified according to their feeding habits	0.85
Deposit feeders	bdp		0.68
Suspension feeders	bff		0.08
<b>Pelagic</b>			
Phytoplankton	pph	Pelagic primary producers and resuspended microphytobenthos	2.54
Suspended detritus	pdt		nd
Pelagic bacteria	pbcb		(0.10)
Pelagic protozoa	ppz	Heterotrophic flagellates, dinoflagellates, ciliates ( $5-100 \mu\text{m}$ ) and microzooplankton ( $<50 \mu\text{m}$ )	(0.11)
Zooplankton	pzp	Microplankton ( $50 \mu\text{m} - 1 \text{ mm}$ ) and mesoplankton ( $1-5 \text{ mm}$ )	0.16
Nekton	pnk	Fishes, pelagic decapods and molluscs $>5 \text{ mm}$	nd

Table 2. Characteristics of linear equations used in inverse analysis of the Brouage food web. Eqs. (1) to (16) represent the system at equilibrium: in each compartment, total input equals total output. Eqs. (20) to (23) describe linear combinations of flows with null results. BM: Brouage Mudflat; MOB: Marennes-Oléron Bay; EC: English Channel; Pe: preliminary estimate

Equation no.	Compartment	Equation	Source
1 to 16	All	Mass equilibrium	
17	Microphytobenthos	Production = $372 \text{ g C m}^{-2} \text{ yr}^{-1}$	BM
18	Zooplankton	Production = biomass $\cdot 56 \text{ (yr}^{-1}\text{)}$	MOB
19	Zooplankton	Respiration = $B \times 112 \text{ (yr}^{-1}\text{)}$	EC
20	Pelagic bacteria	Production = consumption $\times 0.31$	EC
21	Facultative suspension feeders	Pelagic consumption = benthic consumption	Pe
22	Benthic predators	Consumption of oysters = 1 % of oyster production	BM
23	Birds	Assimilation efficiency = 85 %	Literature

Table 3. Inequalities used in inverse analysis of the Brouage food web. C = consumption, M = mortality, NPP = net primary production, P = production, R = respiration. BM: Brouage Mudflat; EC: English Channel; MOB: Marennes-Oléron Bay; WS: Wadden Sea

Compartment	Ineq. no.	Rate / flow	Min	Max	Units	Site	Source
Microphytobenthos	1 & 2	Resuspension	137	319	$\text{g C m}^{-2} \text{yr}^{-1}$	BM	1
Phytoplankton	3 & 4	Net production / biomass	30	40	$\text{yr}^{-1}$	Biomass on BM, rates in EC	2, 3, 4, 5
Primary producers	5 & 6 7 & 8	Respiration / NPP	0.05	0.3	%	General data on primary producers	6
Meiofauna	9	C on microphytobenthos		189	$\text{mg C d}^{-1}$	BM	7
	22	C on microphytobenthos / total C	40		%	BM	10
	23	C on bacteria / total C	20		%	Biomass of BM	10, 11, 12, 13, 14, 15, 16
	24 & 25	Production / biomass	3	31	$\text{yr}^{-1}$	Rates from literature	
	26 & 27	Respiration / biomass	40	54	$\text{yr}^{-1}$	Biomasses and rates in EC	8
Protozoa	10 & 11 12 & 13	Ingestion / biomass Production / biomass	1.4 0.34	8.5 2.95	$\text{d}^{-1}$ $\text{d}^{-1}$		
Benthic bacteria	14 & 15	Production / biomass	41	51	$\text{yr}^{-1}$		
	16 & 17	Respiration / biomass	40	195	$\text{yr}^{-1}$	Biomass and P in Brouage, R and M in EC (bays of Pierre Noire and Saint Brieuc)	8, 9
	18 & 19	Mortality	11	128	$\text{yr}^{-1}$		
Pelagic bacteria	20 & 21	Production / biomass	1.08	2.2	$\text{d}^{-1}$	Biomass and rates in EC	8
Deposit feeders	28 & 29	Respiration / biomass	1.09	9.5	$\text{yr}^{-1}$		13, 14, 17, 18
	30 & 31	Production / biomass	2.5	6.6	$\text{yr}^{-1}$		14
Suspension feeders	32 & 33	Production / biomass	1.2	3.5	$\text{yr}^{-1}$	Biomasses of BM	14, 17, 19, 20, 21
	34 & 35	Faeces production / biomass	0.6	20	$\text{yr}^{-1}$	Rates from literature	13, 14, 22
	36	Respiration / biomass		10	$\text{yr}^{-1}$	(BM, WS, EC and others)	
Facultative suspension feeders	37 & 38	Production / biomass	0.6	5.7	$\text{yr}^{-1}$		17, 18
	39	Respiration / biomass		10	$\text{yr}^{-1}$		
Benthic predators	40	C on microphytobenthos / total C		20	%	Assuming 50% of omnivore consumption is PP	
	41 & 42	Respiration / biomass	2.6	7.3	$\text{yr}^{-1}$	Biomasses of BM	14
	43 & 44	Production / biomass	1.5	1.9	$\text{yr}^{-1}$	Rates from literature	14, 16, 17
	45	Consumption / biomass		73	$\text{yr}^{-1}$		12
Oysters	46 & 47	Production / biomass	0.37	0.89	$\text{yr}^{-1}$	Biomass of BM; Rates from literature (S) and MOB	
	48 & 49	Assimilation	55	90	%		24
	50 & 51	Production + respiration	100	600	$\text{J d}^{-1} \text{ind}^{-1}$		
Macrofauna	52–59	Assimilation	55	90	%	Rate from literature	23
Birds	60 & 61	Consumption	1.1	7.8	$\text{g C m}^{-2} \text{yr}^{-1}$	Populations of BM, rates from literature	25, 26, 27, 28, 29, 30, 31
	62	C on nekton / total C		3	%	Assumption for the study site	
Macrofauna consumers	63–92	Diet	Proportional to prey availability				3

(1) Guarini unpubl., (2) Guarini et al. 1998, (3) Sorrin et al. 1987, (4) Riera & Richard 1997, (5) Ménesguen & Hoch 1997, (6) Vézina & Platt 1988, (7) Montagna et al. 1995, (8) Garet 1996, (9) Newell & Linley 1984, (10) Rzeznik & Fichet unpubl., (11) Giere 1993, (12) Pace et al. 1984, (13) Dame & Patten 1981, (14) Chardy et al. 1993, (15) Gerlach 1971, (16) Chardy & Dauvin 1992, (17) Asmus 1987, (18) Banse & Mosher 1980, (19) Sukhotin 1992, (20) Rosenberg & Loo 1983, (21) Bayne et al. 1993, (22) Beukema & Cadée 1991, (23) Soletchnik et al. 1996, (24) Barillé et al. 1997, (25) Boileau & Corre unpubl., (26) Le Dréan Quénech'hdu & Mahéo 1997, (27) Turpie & Hockey 1996, (28) Desholm 2000, (29) Goss-Custard et al. 1997, (30) Moreira 1996, (31) Piersma 1994, (32) Vézina & Pace 1994

piration rates for benthic bacteria have been evaluated in the Bay of Saint-Brieuc, (France) (Chardy et al. 1993) and at the Pierre Noire station in the English Channel (Chardy & Dauvin 1992) (Table 3, Ineqs. 16 to 19).

Pelagic bacterial production/consumption (P/C) rates have been measured in the English Channel (0.31; Newell & Linley 1984); estimates of the P/B rate vary from 1.08 to 2.2 d<sup>-1</sup> (Linley et al. 1983, Newell & Field 1983, Fuhrman & Azam 1982) (Table 3, Ineq. 20 & 21).

**Pelagic secondary producers (protozoa and zooplankton):** Heterotrophic protozoa are a trophic intermediary between bacteria and oysters but have not been studied quantitatively in MOB (Le Gall et al. 1997,

Dupuy et al. 1999, 2000). Thus, concentration data measured in the English Channel (Newell & Linley 1984) are used instead. The ingestion/biomass rates for the protozoa were measured for *Noctiluca miliaris* (Dewey 1976 in Newell & Linley 1984) (Table 3, Ineq. 10 & 11) and P/B rates were from heterotrophic bacterivorous flagellates (Newell & Linley 1984) (Table 3, Ineq. 12 & 13).

*Euterpina acutifrons* is the major component of the zooplankton community in MOB; zooplankton production values were averaged after Sautour & Castel (1993a,b, 1998; Table 2, Eq. 18). Respiratory rates (Table 2, Eq. 19) were from values calculated for the English Channel (Newell & Linley 1984).

**Meiofauna:** Of the intertidal benthic meiofauna on the Brouage mudflat 95% are nematodes, among which *Metachromadoroides*, *Ptycholaimellus*, *Sabatieria* and *Tershellia* make up 57% of the total (Rzeznik et al. unpubl.). Observations from a study on the influence of oyster beds on species assemblages in Arcachon Bay, France (Castel et al. 1989) were used to estimate the meiofauna biomass per m<sup>2</sup> under oyster beds. The meiofauna consisted of 20% strict bacterivores and 45% strict herbivores (Reznik et al. unpubl.), and these feeding habits were used as forcing functions (Table 3, Ineqs. 22 & 23). Consumption of microphytobenthos by meiofauna at Brouage ranges from 58 to 189 mgC m<sup>-2</sup> d<sup>-1</sup> during springtime (Montagna et al. 1995), when it is probably at a maximum (Table 3, Ineq. 9). P/B rates vary in the literature from 3 to 31 yr<sup>-1</sup> for muddy substrates (Giere 1993) (Table 3, Ineqs. 24 & 25). Respiration/biomass rates vary from 40 to 54 yr<sup>-1</sup> (Dame & Patten 1981, Pace et al. 1984, Chardy & Dauvin 1992, Chardy et al. 1993, Giere 1993) (Table 3, Ineqs. 26 & 27).

**Benthic macrofauna:** Macrofauna were divided into 4 compartments according to trophic regime (Table 4). The gastropod *Hydrobia ulvae* and the bivalves *Scrobicularia plana*, *Abra nitida*, and *Macoma balthica* are the most abundant species on the mudflats. The non-cultivated macrofaunal biomass was evaluated in MOB in 1985 (Sauriau 1987, Sauriau et al. 1989), and again in 1995 on the Brouage mudflat outside the oyster

Table 4. Biomass of the wild macrofauna compartments, and principal species on the Brouage mudflat. Corr. farms = multiplicative correction factor for biomass values on oyster cultures (Sauriau 1989)

Compartment and species	Total biomass (mg C m <sup>-2</sup> ) <sup>a</sup>	Biomass fraction (%)	Corr. farms	Source
Suspension feeders (bff)	75	(4.7)	0.9	1–7, 11, 15,
<i>Cerastoderma edule</i>		1.87		19–21,
<i>Tapes philippinarum</i>		1.20		23, 24
<i>Parvicardium ovale</i>		0.27		
Facultative suspension feeders (bfs)	696	(44.0)	0.006	8, 9, 22
<i>Macoma balthica</i>		23.3		
<i>Scobicularia plana</i>		20.6		
Deposit feeders (bdp)	576	(36.4)	0.18	6, 4, 10–13,
<i>Hydrobia ulvae</i>		16		15, 25
<i>Abra nitida</i>		6.90		
<i>Sternopsis scutata</i>		4.96		
<i>Abra tenuis</i>		2.54		
<i>Euclymene oers</i>		1.33		
<i>Pseudopolydora antennata</i>		1.27		
<i>Corophium volutator</i>		1.18		
<i>Clymenura tricornata</i>		0.79		
Predators (omnivore and carnivore) (bpr)	234	(14.8)	0.8	4, 6, 14–18
<i>Hediste diversicolor</i> (omnivore)		2.35		
<i>Carcinus maenas</i> (omnivore)		2.32		
<i>Nephtys hombergii</i>		3.18		
<i>Nemerts</i> sp.		2.75		
<i>Glycera</i> sp.		2.02		
<i>Ocenebra erinacea</i>		0.72		
Sum (19 species)		95–96		
Total	1581	100		

<sup>a</sup>Data on total biomass from Kang (1999), converted from mg AFDW m<sup>-2</sup> using C/AFDW = 0.4 (Steele 1974 in Kang 1999).

(1) Cranford et al. 1985, (2) Bachelet 1982, (3) Sukhotin 1992, (4) Chardy et al. 1993, (5) Asmus 1987, (6) Dame & Patten 1981, (7) Guillou et al. 1990, (8) Banse & Mosher 1980, (9) Chambers & Milne 1975, (10) Asmus & Asmus 1993, (11) Blanchard et al. 2000, (12) Franchesch & Lopez Jamar 1991, (13) Gerdol & Hughes 1994, (14) Pace et al. 1984, (15) Warwick & Price 1975, (16) Medernach & Grémare 1999, (17) Raffaelli et al. 1989, (18) Riisgard 1991, (19) Deslous-Paoli et al. 1983, 1990, (20) Bayne et al. 1987, (21) Bayne & Worall 1980, (22) Beukema & Cadée 1991, (23) Langdon & Newell 1990, (24) A. J. S. Hawkins et al. 1990, 1996, 1998, (25) C. M. Hawkins 1985

cultures (Kang 1999, Table 4). A correction was applied to the latter values to calculate a weighted mean biomass per average  $m^2$  taking into account that 16% of the surface is occupied by oyster farms. At steady state, consumption equals pseudo-faeces production plus faeces production plus respiration plus tissue production. Pseudo-faeces production does not appear in the present model because it does not participate in the carrying capacity, so we only take ingestion into account in the present model.

**Nekton:** The main species on the Brouage mudflat are: *Solea vulgaris* (405 t sold in 2001 in La Cotinière Harbour), *Crangon crangon* (30 t), *Merlangius merlangus* (180 t), *Dicentrarchus labrax* (181 t), *Sepia officinalis* (441 t), *Mullus surmuletus* (76 t), *Alloteuthis* and *Liza ramada* (33 t) (Nadeau pers. comm.). There are few quantitative biomass and production data on the pelagic macrofauna. The only numerical values are from local reports (on the 'Pertuis d'Antioche', Guérault et al. 1996; and on coastal nurseries, Guérault & Désaunay 2001) and cannot be extrapolated to the Brouage mudflat, particularly in the case of juvenile fish.

**Birds:** Shorebirds consume large portions of a region's annual macrofauna production (Baird & Milne 1981, Baird et al. 1985) and may negatively impact local invertebrate populations. At Brouage they have become increasingly numerous since the establishment of a bird sanctuary. The main species on the mudflat are dunlins *Calidris alpina*, and knots *C. canutus*; these 2 species represent 68% of the total number of birds feeding on the mudflat. Their food consumption was evaluated on the basis of physiological rates found in the literature (Piersma & Davidson 1992a,b, Moreira 1996, Turpie & Hockey 1996) (Table 3, Ineqs. 60 & 61).

**Inverse analysis and flow estimates.** Trophic-web inverse analysis (Vézina & Platt 1988, Vézina 1989) is a numerical method for developing complete, steady-state food-web models. The method uses field estimates and other data sources as input to a network of equations and inequalities in order to build the best estimates of food-web flows. The solution selected is the minimum of a norm ('parsimony principle'). Descriptions of the method and the equations used are given in Appendix 1. The algorithm of resolution from Vézina & Platt (1988) was programmed by G. A. Jackson using the software Matlab<sup>®</sup>.

Benthic and pelagic systems are strongly coupled in intertidal ecosystems such as the Brouage mudflats, and with our approach the inverse analysis method can be applied to both systems in the same model. The conceptual model consists of 16 compartments (Table 1): 2 non-living factors (benthic and suspended detritus), and 14 categories of organisms. The choice of aggregation level for the compartments was based on

size class, habitat (benthic/pelagic), and feeding behaviour. In this study, the term 'detritus' refers to dissolved and particulate organic carbon, aggregated into a single compartment in each compartment (benthic or pelagic).

Inputs (Table 5) consist of 2 types of primary production (phytoplanktonic and microphytobenthic) plus the suspended detritus supplied by rivers and tidal currents. Carbon exports (Table 5) included: respiratory losses, material exports (human consumption of oysters, fish and bird production, advection of suspended detritus), and burial. The quantitatively non-negligible flows linking the compartments are determined on the basis of the animals' biology, feeding habits, and habitats (Table 6). The flow values for the Brouage mudflat are reported in Tables 5 & 6.

**Sensitivity analysis.** Sensitivity analyses were conducted to assess the robustness of the solution to changes in the data and to constraints. Biomass and other data (including results of equations and inequalities) were varied by  $\pm 10\%$  and the inverse analysis

Table 5. Inputs and outputs in the coupled benthic-pelagic system of the Brouage food web (numerical results of inverse analysis). *A priori* flows are indicated by flow numbers corresponding to the sensitivity analyses (see Figs. 4 & 5)

	Flow no.	Flow values ( $gC\ m^{-2}\ yr^{-1}$ )
<b>Inputs</b>		
Microphytobenthos	1	391
Phytoplankton	2	75
Suspended detritus	3	0
Total		466
<b>Exports</b>		
Phytoplankton	76	63
Benthic detritus	77	26
Suspended detritus	78	17
Cultured oysters	79	3.3
Nekton	80	46
Birds	81	1.3
Total		156.6
<b>Respiration</b>		
Microphytobenthos	82	18.6
Phytoplankton	83	3.6
Benthic bacteria	84	79.0
Pelagic bacteria	85	53.7
Meiofauna	86	29.7
Pelagic protozoa	87	31.4
Zooplankton	88	18
Deposit feeders	89	5.5
Facultative suspension feeders	90	7
Suspension feeders	91	0.8
Cultured oysters	92	12.8
Benthic predators	93	1.8
Nekton	94	45.9
Birds	95	1.3
Total		309.1

was recalculated. We evaluated the equations for microphytobenthic production, zooplankton production, and zooplankton respiration, as the remaining equations were combinations of flows with a null result. The sensitivity of the results to elevated biomasses were also investigated. The most influential biomasses, equations, and inequalities were determined on the basis of the scope (number of varied flows), and intensity (average variation of flows) of their influence.

**Network analysis.** The 'Netwrk 4.2'<sup>©</sup> program (Ulanowicz 1999: www.cbl.umces.edu/~ulan/) was used for calculation of network analysis indices of the food web derived from inverse analysis. The vector of every flow

is composed of 4 parts: input, export, respiration, and internal flows. The flux of matter through a compartment is its individual throughput. Since the system is at equilibrium, throughput is either equal to the sum of inputs to a compartment or the sum of the outputs from a compartment. The throughput quantifies the relative activity of each compartment in the system, and the Total System Throughput (TST), i.e. the sum of all flows, is an indicator of ecosystem activity (Ulanowicz 1986). The cycling throughput of each compartment is the quantity of carbon that cycles through the individual compartments and is a measure of its participation in the cycling of carbon through the ecosystem. The cycling activity of a compartment is defined as the

fraction of its throughput involved in cycling (Fasham 1985) and is considered to be a measure of its dependence on the carbon cycling in the ecosystem. The Finn cycling index (FCI) (Finn 1976) represents the proportion of the carbon flows involved in cycling for the whole system.

**Coupling the benthic and pelagic systems.** Separate pelagic and benthic food webs were constructed to assess the linking of the benthic and pelagic systems in the same inverse analysis computation and to test the usefulness of having a food web model on one particular zone of the MOB. We constructed the benthic and pelagic subsystems in 2 ways: (1) we extracted the expected values of hypothetical benthic and pelagic subsystems from the 'coupled' result, and (2) we computed an inverse analysis on 2 systems separated *a priori*. The benthic conceptual model consisted of 10 compartments (microphytobenthos, benthic detritus, benthic bacteria, meiofauna, deposit feeders, facultative suspension feeders, suspension feeders, cultured oysters, benthic predators, and birds) and 55 *a priori* flows linked by 24 equations and 51 inequalities. The pelagic conceptual model consisted of 7 compartments (phytoplankton, suspended detritus, pelagic bacteria, pelagic protozoa, zooplankton, nekton and birds) and 34 *a priori* flows linked by 12 equations and 13 inequalities. The network analysis was repeated on each of the 4 food webs (2 from the 'coupled result' and 2 from *a priori* separated systems) for comparison.

Table 6. Numerical results of inverse analysis of the Brouage food web (internal flows in  $\text{gC m}^{-2} \text{yr}^{-1}$ ). From = compartment of origin; To = destination compartment; Flow no. = *a priori* flows from sensitivity analyses in Figs. 4 & 5. See Table 1 for abbreviations

From	To	Flow no.	From	To	Flow no.		
bph 391	pph	136.88	bmi 100	bdp	53.53		
	bdp	101.03		bpr	0.00		
	bmi	47.51		pnk	17.04		
	pph 211	bdp	4.16	ppz 58	pdt	13.90	
		bfs	1.64		pzp	13.10	
		bpr	0.00		bfs	0.00	
		pnk	81.24		bff	0.00	
		pdt	45.06		bco	0.00	
		bdt 205	ppz	31.17	pzp 43	pdt	15.58
			bbc	170.43		bfs	0.00
bmi			0.00	bff		0.00	
bdp			0.00	bco		3.63	
bfs			0.00	bpr		0.00	
pdt 148	pnk		0.00	bdf 14	bdp	6.10	
	bco		14.90		bpr	0.93	
	pnk		16.64		pnk	0.00	
	pdt		8.63		pbd	1.07	
	bbc		170.43		bfs 17	bdp	7.67
	bbc 170	bmi	0.00	bfs 17	bpr	1.12	
		bdp	0.00		pnk	0.00	
		bfs	0.00		pbd	1.30	
		bff	0.00		bff 1.8	bdp	0.83
		bco	0.00		bpr	0.12	
pbc 130		pnk	0.00	bco 29.45	pnk	0.00	
		bco	10.93		pbd	0.14	
		bdt	22.04		bco 29.45	bdp	13.25
		bmi	52.75		bpr	0.03	
		bdp	9.40		bpr 2.5	bdp	0.25
	pbc 130	bfs	6.88	pnk 120	pnk	0.00	
		bpr	0.32		pbd	0.44	
		pdt	36.24		pbd	0.09	
		ppz	27.20		pdt	28.42	
		bfs	2.28		pbd 3.0	bdp	0.46
bff		0.00					
bco		10.93					



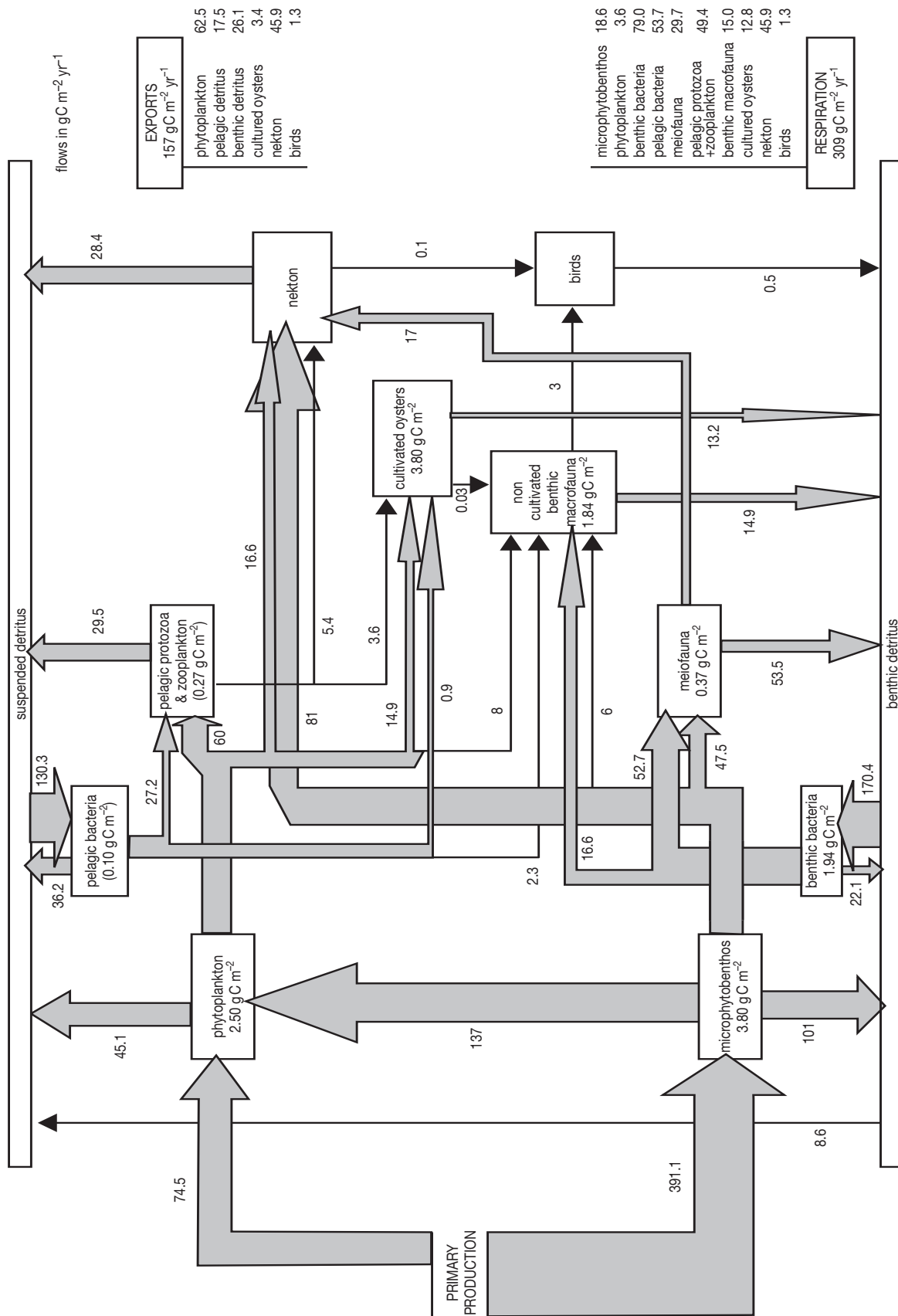


Fig. 2. Food web obtained by inverse analysis of the coupled benthic and pelagic systems on the Brouage mudflat. The following compartments were aggregated: non-cultivated macrofauna (suspension-feeders, mixotrophic feeders, deposit feeders, predators); and pelagic protozoa with zooplankton. Boxes depict measured biomasses (details in Table 1). Flows are in  $\text{g C m}^{-2} \text{ yr}^{-1}$  (details in Tables 5 & 6)

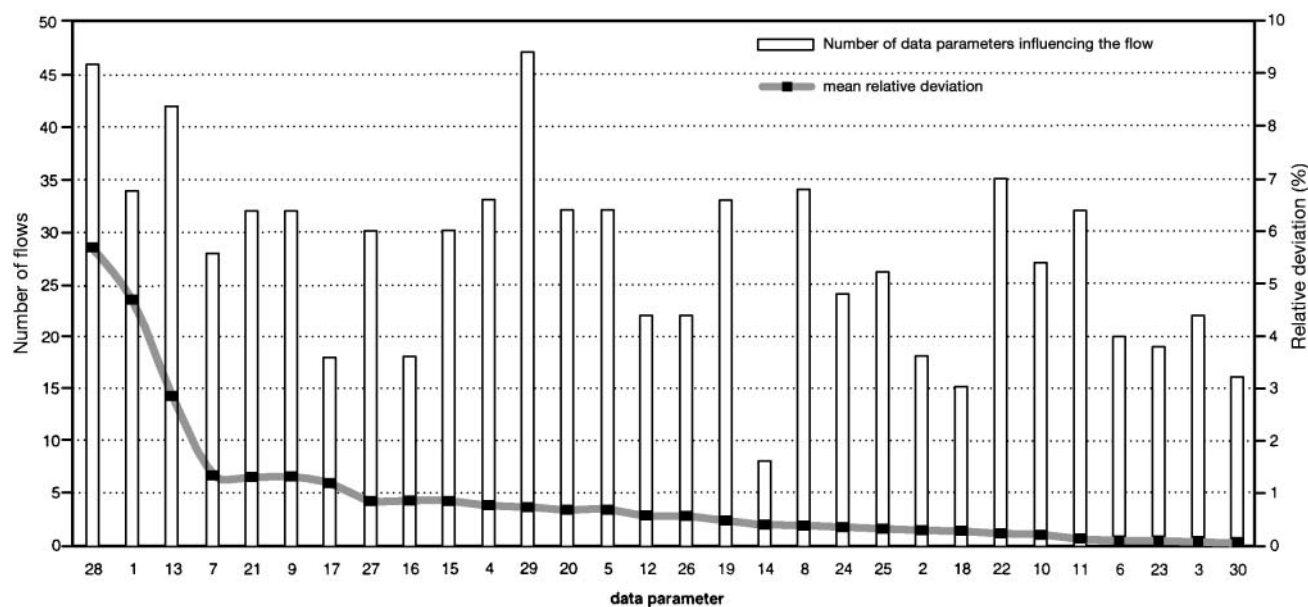


Fig. 3. Influence of a 10% variation in the data on the result of inverse analysis of the Brouage food web (number of flows influenced, and mean deviation induced). Equation parameters: (1) production of microphytobenthos, (2) production of zooplankton, (3) respiration of zooplankton. Inequality parameters: (4) minimal resuspension of microphytobenthos, (5) minimal production of phytoplankton, (6) minimal production of pelagic protozoa, (7) minimal production of benthic bacteria, (8) minimal respiration of benthic bacteria, (9) minimal production of pelagic bacteria, (10) maximum production of meiofauna, (11) maximum respiration of meiofauna, (12) maximum respiration of deposit feeders, (13) maximum production of suspension feeders, (14) maximum respiration of suspension feeders, (15) maximum respiration of facultative suspension feeders, (16) maximum respiration of predators, (17) maximum production of predators, (18) maximum production of oysters, (19) maximum metabolism of oysters. Biomass parameters: (20) phytoplankton, (21) pelagic bacteria, (22) benthic bacteria, (23) pelagic protozoa, (24) zooplankton, (25) meiofauna, (26) deposit feeders, (27) facultative suspension feeders, (28) suspension feeders, (29) oysters, (30) predators

## RESULTS

### Annual food web model

The modelled trophic network had a total primary production of  $466 \text{ gC m}^{-2} \text{ yr}^{-1}$ , of which 84% was by microphytobenthos and 16% by phytoplankton (Fig. 2, Table 5). There was no import of detritus. The exports amounted to  $157 \text{ gC m}^{-2} \text{ yr}^{-1}$ , which was 34% of the total output. The most important exports were those of phytoplankton and suspended microphytobenthos (40% of exports), nekton (29%) and the burial of benthic detritus (17%). The export of material via suspended detritus was less (11%). The exported oyster and bird production were relatively small (2 and 0.8%, respectively). The total respiratory loss of the system was twice as high as the material exports (Table 5).

The internal flows were all associated with consumption, detritus formation, or resuspension (Table 6). The 9 largest flows were: benthic and planktonic bacteria consuming detritus ( $170$  and  $130 \text{ gC m}^{-2} \text{ yr}^{-1}$ , respectively), resuspension of microphytobenthos ( $136 \text{ gC m}^{-2} \text{ yr}^{-1}$ ), microphytobenthos created benthic detritus ( $101 \text{ gC m}^{-2} \text{ yr}^{-1}$ ), nekton consuming microphytobenthos ( $81 \text{ gC m}^{-2} \text{ yr}^{-1}$ ), benthic and pelagic bacterial

respiration ( $79$  and  $54 \text{ gC m}^{-2} \text{ yr}^{-1}$ ), and meiofauna consumption of benthic bacteria ( $53 \text{ gC m}^{-2} \text{ yr}^{-1}$ ) and egestion to detritus ( $54 \text{ gC m}^{-2} \text{ yr}^{-1}$ ).

Of the allowed 95 flows in the conceptual model, 25 equalled zero. Although detritus utilization by organisms other than bacteria (protozoa, zooplankton, macrofauna, nekton, meiofauna) was allowed, it did not occur in this system. According to the model, suspension feeders did not ingest protozoa, bacteria, or zooplankton, but ingested exclusively phytoplankton and microphytobenthos. Nekton did not feed on benthic macrofauna in the final result.

### Sensitivity analyses

Among the most influential parameters (Fig. 3), in terms of relative amount of variation produced, were the suspension feeders (biomass and production, nos. 28 and 13), the microphytobenthos production (no. 1), the minimal benthic bacterial production (no. 7), the minimal pelagic bacterial production (no. 9) and the pelagic bacterial biomass (no. 21). Some of the most affected flows (Fig. 4) were those linked to: nekton consumption of primary producers and of zooplankton,

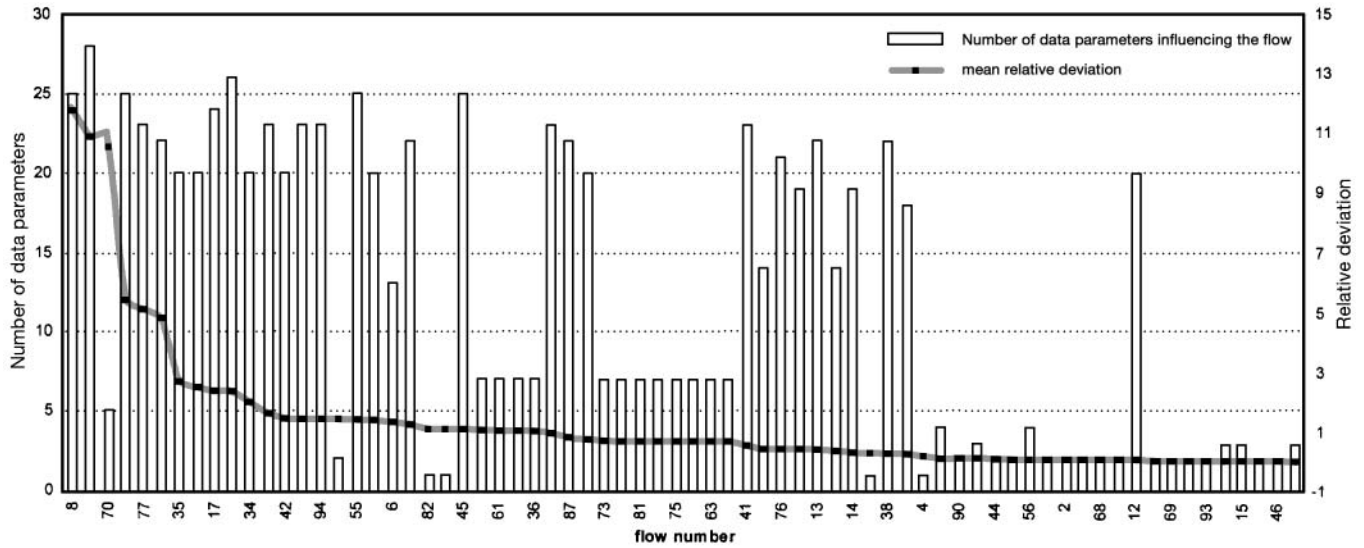


Fig. 4. Flows impacted by a 10% variation in the data for sensitivity analysis of the Brouage food web (number of data influencing each flow by more than 10%, and mean deviation induced). Flow numbers are listed in Tables 5 & 6

exportation of material and respiration (nos. 10, 17, 55, 80 & 94), diet of facultative deposit feeders (nos. 8, 35 & 39), consumption of microphytobenthos (nos. 5 to 10), and flows involving benthic and suspended detritus (nos. 18, 70, 77, 78, 50, 42 & 5).

In absolute values, nekton production was the most sensitive of the 3 types of production in the system (Fig. 5). The flows in the nekton compartment were not constrained by data or direct inequalities. Bird production was influenced by data on filter feeders and benthic predators. Oyster production was only influenced by the variables that described them directly (oyster biomass and maximal production).

Sensitivity analysis showed that enhancing zooplankton respiration or production had very weak consequences for the system, in comparison to the effect of a 10% increase in microphytobenthic production. This increase had no influence on macrofaunal production (nos. 56 to 72), even though their diet would have changed. As a whole, 23 flows were changed, i.e. 33% of the non-null flows.

Sensitivity analysis of the inequalities showed that the most influential ones were: microphytobenthos resuspension (parameter 4) and maximal metabolism of cultivated oysters (no. 19) (Fig. 3). The maximal respiration and production of predators (nos. 16 & 17) and

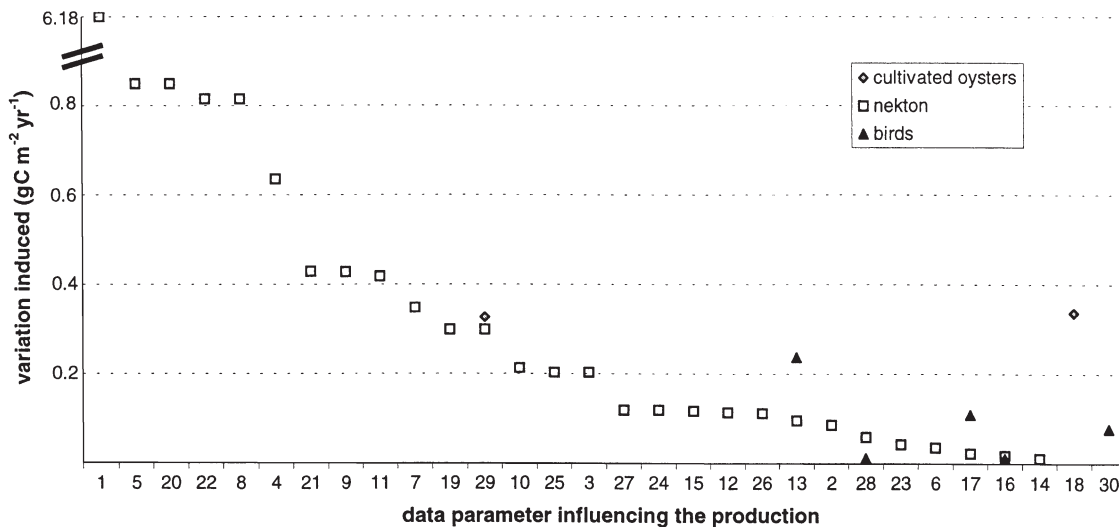


Fig. 5. Influence of data parameters on the variation of exports of C from the compartments for cultivated oysters, nekton, and birds in the Brouage food web. Parameters are the same as in Fig. 3

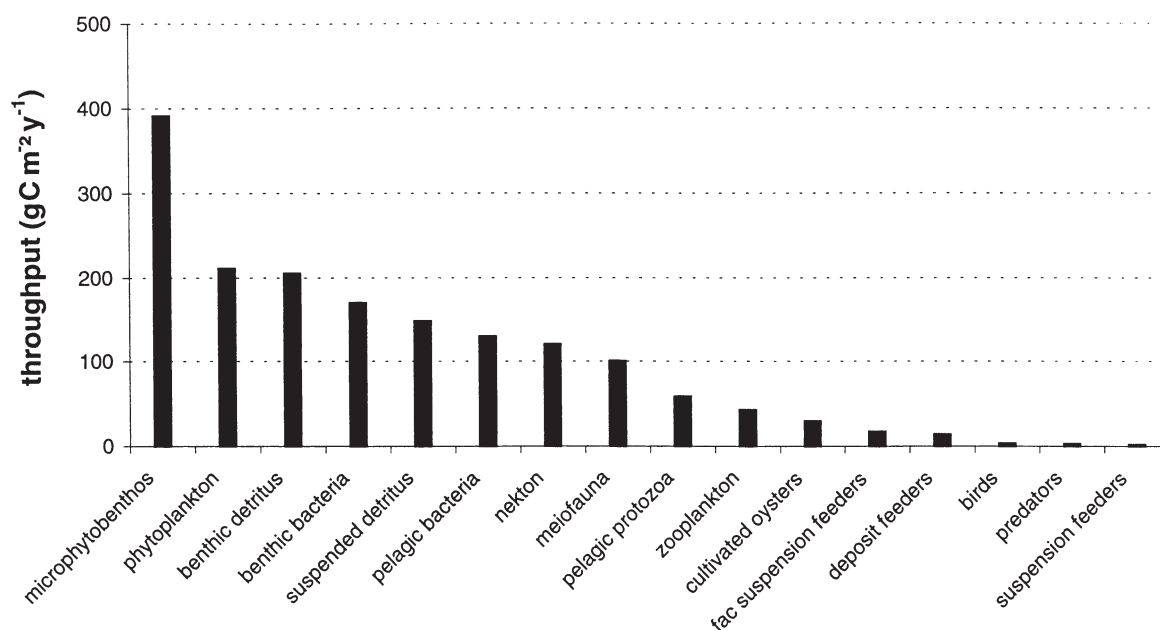


Fig. 6. Compartmental throughputs in the Brouage food web (amount of material entering or exiting the compartment during one year). Data from Table 5

the maximal production of suspension feeders (parameter 13) had an influence on macrofauna, nekton and bird productions (Fig. 5). In contrast, the flows most subject to influences were: consumption of microphytobenthos by the meiofauna (no. 6), resuspension of benthic detritus (no. 18), flows linked to the nekton (production of detritus, export and respiration) (nos. 10, 17, 55, 74, 80 & 94) and advection or sedimentation of detritus (nos. 77 & 78), which were influenced by all inequalities (results not shown).

The flows that were influenced most by biomasses were: resuspension of benthic detritus (no. 4), export of detritus (nos. 77 & 78), all flows linked to the nekton (nos. 10, 17, 55, 74, 80 & 94), consumption of zooplankton by oysters (no. 53), and consumption of microphytobenthos by facultative deposit feeders (no. 8).

### Network analysis

The total system throughput was  $2111 \text{ gC m}^{-2} \text{ yr}^{-1}$ . Primary producers had the most important throughput (Fig. 6), with a predominance of benthic over pelagic primary producers. Benthic detritus and benthic bacteria had a greater throughput than suspended detritus and pelagic bacteria. Meiofauna and nekton made an important contribution, higher than protozoa or zooplankton. The total macrofauna (cultivated or uncultivated) throughput was  $65 \text{ gC m}^{-2} \text{ yr}^{-1}$ .

Among the 37 pathways of carbon cycling, 20 involved both benthic and suspended detritus, 4 involved sus-

pended detritus only, and 13 involved benthic detritus only. Carbon cycled mainly through the benthic and suspended detritus, benthic and pelagic bacteria, meiofauna, protozoa, and zooplankton (Fig. 7). Nearly one-third (29%) of the benthic detritus and bacterial throughputs were involved in cycling:  $58$  and  $48 \text{ gC m}^{-2} \text{ yr}^{-1}$ , respectively. For the suspended detritus and bacterial throughputs, 31% of the throughputs ( $46$  and  $40 \text{ gC m}^{-2} \text{ yr}^{-1}$ ) were involved in cycling. The cycling activity of the cultivated oysters and nekton was 0.4% and 0.3% of their throughputs, respectively. Of the total flows of carbon through the food web, 21% (Finn Cycling Index) participated in cycling pathways (Table 7).

### Coupling the benthic and pelagic systems

Out of 33 possible flows for the pelagic system, 7 were zero in the non-coupled computation (instead of 3 expected from the coupled computation), 21 flows were smaller than expected and 11 were greater, with a mean 172% decrease. Among the 55 possible flows for the benthic system, 12 were null and 1 flow expected to be null was positive; 20 flows were smaller than expected and 14 greater, with a mean 15.5% decrease. All the expected cycles were obtained with separated computations (Table 7). Both benthic and pelagic FCI were higher than expected from the coupled system (19 and 38 vs 18 and 17%). The values for the inputs and outflows of the coupled systems were greater than values obtained by modelling each

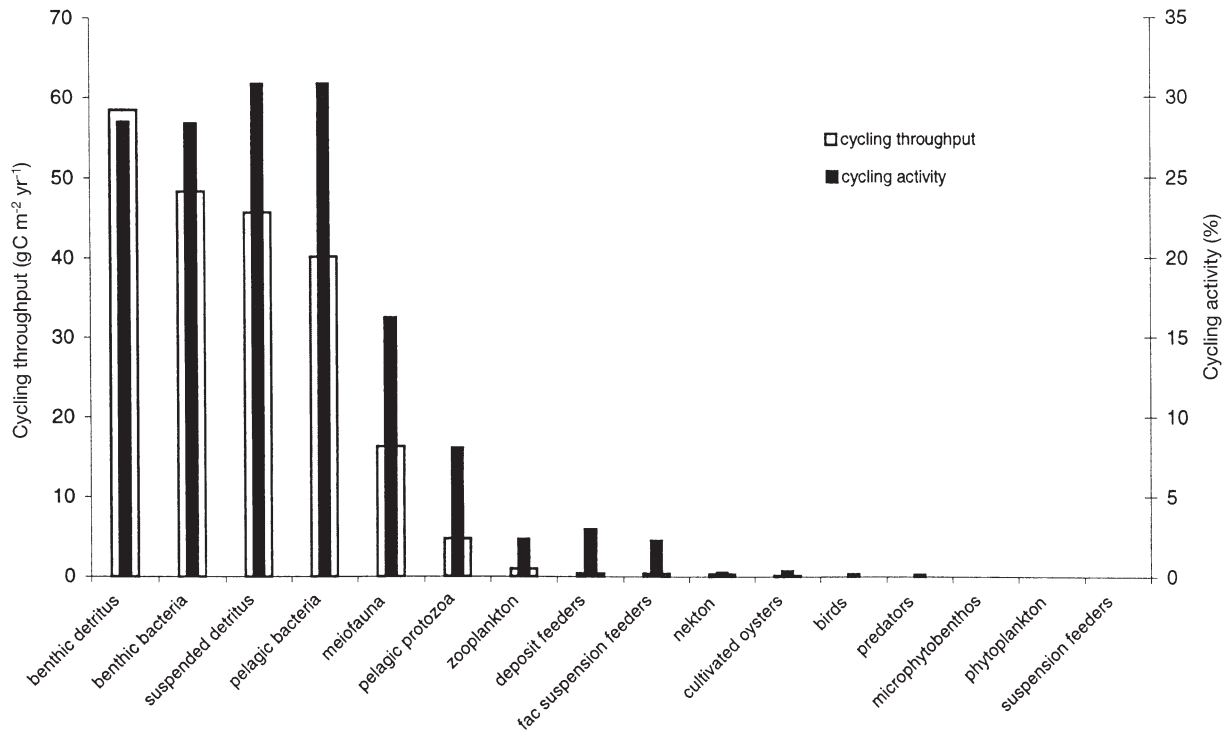


Fig. 7. Cycling throughput (contribution of the compartment to the cycling activity of the entire system) and cycling activity (fraction of the compartment throughput involved) for each compartment in the Brouage food web. Cycling throughput represents the importance of the compartment for the cycling in the system, and the cycling activity represents the importance of cycling for the compartment

system separately. This difference was greater for the pelagic system (Table 7).

## DISCUSSION

We characterized the properties and functioning of the Brouage Mudflat ecosystem by computing an inverse analysis using a consistent and unified approach based on all the available compartmental information.

### Methodological choices

We describe the trophic network over a whole year, because such a time period averages seasonal blooms and most populations have the same patterns year after year (Hily 1976, Sauriau 1987, Sauriau et al. 1989, Sauriau & Bacher 1991, Kang, 1999). Studies in other European estuaries have shown that some species decline or increase in abundance over the course of a year (Desprez et al. 1991, Essink et al. 1991); however, the small

variations are balanced over the course of an average year. Therefore, we assume that the system is at equilibrium. The 2 most important invasive species in MOB (*Crepidula fornicata*: Deslous-Paoli et al. 1983, Sauriau et al. 1998; and *Ocenebrellus inornatus*: Pigeot et al. 2000) were poorly represented on the Brouage mudflat; only small patches exist under oyster beds in the south-western part.

Our second assumption was the parsimony principle, a mathematical criterion (here, the least squares condi-

Table 7. Network analyses of the benthic and pelagic systems of the Brouage food web. Coupled: calculation based on the coupled system (far right column); non coupled: results of inverse analysis of the separate systems. Coupled system flows are shown in Tables 5 & 6

Estimates	— Benthic —		— Pelagic —		Total coupled
	Coupled	Non-coupled	Coupled	Non-coupled	
Total inputs (g C m <sup>-2</sup> yr <sup>-1</sup> )	431	404	321	93	466
Total exports (g C m <sup>-2</sup> yr <sup>-1</sup> )	275	261	167	29	157
Total respiration (g C m <sup>-2</sup> yr <sup>-1</sup> )	156	143	154	64	309
Total throughput (g C m <sup>-2</sup> yr <sup>-1</sup> )	1365	1350	1035	520	2111
Number of cycles	12	12	4	4	37
Finn Cycling Index (%)	18	19	17	38	21

tion). It has a theoretical basis: the Ockham razor, 'multiplicity ought not to be posited without necessity' (Legendre & Legendre 1998). The principal consequences of this approach are: (1) the shortest pathway of carbon from one compartment to another is favoured; (2) when several pathways are of the same length, the solution is the most evenly distributed; (3) when an element is not required to satisfy the constraints of the system (through the equations and inequalities), it will disappear from the system (Niquil 1998). In practical terms this means that many flows can be underestimated or overestimated (those that exit the system quickly). Even if inverse analysis is an ideal means for obtaining new information about poorly defined systems, it still requires a good set of constraints. The substitution of data from other ecosystems to define some constraints can be an acceptable alternative to a lack of data. Sensitivity analyses then highlight the less reliable results and help to avoid unreasonable conclusions.

Despite the added constraints, some flows are still zero in the result of inverse analysis. This is due to the lack of data: when a flow is not necessary for the system of equations and inequalities, it is set to zero. For example, in our system there is no minimal constraint on the detritus input; thus, the method would have led to a positive inflow of material only if there had not been sufficient primary production to sustain the production in downstream flows. In addition, many of those downstream flows have reached the maximum values allowed by the constraints. Thus, the flows of detrital materials towards organisms other than bacteria was null. This was an unexpected result, as it had been assumed previously that detrital materials are consumed by macrofauna in non-negligible amounts (McLusky 1989, Mees & Hamerlynck 1992, Azeitero & Marques 1999, Mucha & Costa 1999). In our system, each intermediate step between primary producers and predators is circumvented.

The network obtained here does not show pseudo-faeces production; the results presented in this study are ingestion flows, and not consumption flows. Particle uptake and release as pseudo-faeces only slightly alters the particle composition, so that particles remain available to the other components of the ecosystem (Feuillet-Girard et al. 1994). The released fraction of consumed energy comprises between 62 and 92% (Héral et al. 1983, Deslous-Paoli et al. 1987, 1992, Soletchnik et al. 1996), of which 50 to 90% are pseudo-faeces (Deslous-Paoli et al. 1992, Soletchnik et al. 1993). However, these particles can enrich benthic exchanges in comparison to the pelagic ones. Pseudo-faeces production by oysters has been evaluated in Feuillet-Girard et al. (1994). An inverse analysis computed with this data showed that an inclusion of the

pseudo-faeces production obscures most of the other processes. Moreover, suspension feeders use pseudo-faeces to enrich the organic fraction of their diet (Deslous-Paoli et al. 1992, Iglesias et al. 1992, Bayne et al. 1993, Barillé et al. 1997) and suspension feeding is a 'highly selective' process (Shumway et al. 1985, Graf & Rosenberg 1997). For example, *Crassostrea gigas* feeds selectively upon the microphytobenthic food supply (Cognie et al. 2001) and the pearl oyster *Pinctada margaritifera* selects its prey on both size and taxonomic criteria (Loret et al. 2000). Considering that filter feeders may actively select living material for ingestion, the limited uptake of detritus in our results should be realistic.

The coupling between benthic and pelagic systems is strong in coastal habitats (Zeitzschel 1980, Niquil et al. 2001). Hydrodynamic processes play an important role in the MOB food web of molluscan assemblages (Sauriau et al. 1989, Gouleau et al. 2000). However, the Brouage mudflat is mainly a benthic system with regular tidal imports and exports of material to and from the water column. The small difference between the 2 benthic simulations obtained (Table 7) is largely due to the availability of reliable data on the ecosystem.

Coupling the benthic and pelagic subsystems means that the mudflat dynamics can be incorporated into models of the entire MOB. The Brouage system can be represented as a 'heart' that promotes the cycling of carbon (Fig. 8). External forcing provides for the supply of raw materials and the removal of detritus.

### Ecological properties

Flows calculated by the model cannot be validated directly, but sensitivity analyses highlight the most responsive flows, and comparisons with other systems can be used to evaluate whether the order of magnitude of a computation is reasonable (Chardy & Dauvin 1992).

#### Microphytobenthos dominates primary production

The microphytobenthos is the most important compartment of the system, in terms of activity (throughputs) and influence (sensitivity analyses), and its relative importance may be even higher, because phytoplankton production may have been overestimated in our study. The microphytobenthos influences the entire system as a determinant input from the bottom of the food web. This is a particularity of the Brouage ecosystem.

At Peck's Cove (Bay of Fundy, New Brunswick, Canada), Schwinghamer et al. (1986) calculated that

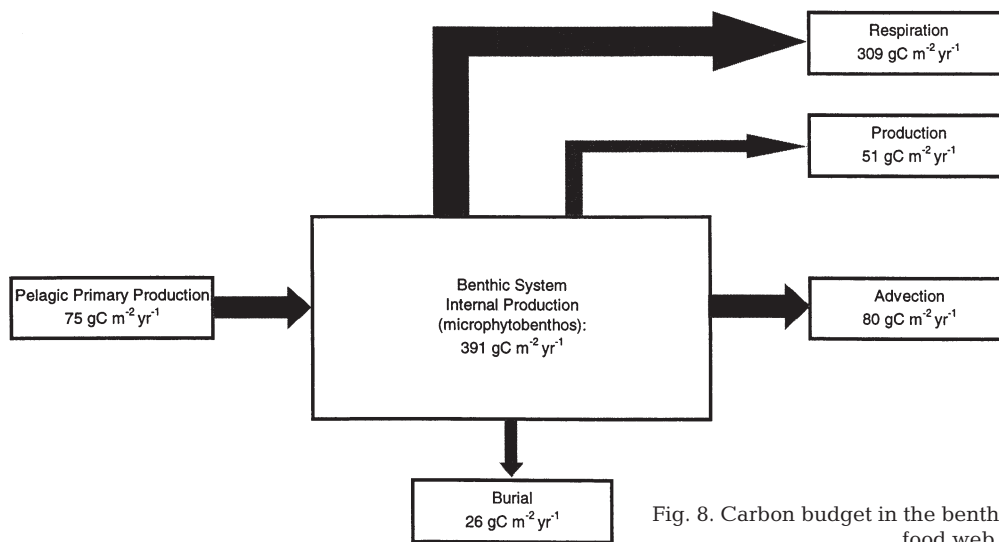


Fig. 8. Carbon budget in the benthic system of the Brouage food web

the microalgal production of  $778 \text{ kcal m}^{-2} \text{ yr}^{-1}$  ( $58.5 \text{ gC m}^{-2} \text{ yr}^{-1}$ , Vollenveider 1965 in Rosenberg & Loo 1983) was not sufficient to support the downstream production by other benthic organisms. An additional source of carbon was available from the fringing *Spartina alterniflora* in the Peck's Cove ecosystem. In comparison, on the mid-Atlantic coast of the US at Narragansett, Delaware, and Chesapeake Bay, Monaco & Ulanowicz (1997) reported a net primary production of 403, 381, and  $333 \text{ gC m}^{-2} \text{ yr}^{-1}$ , respectively. Production is mostly phytoplankton; the Chesapeake Bay production is supplemented by the import of detrital material. In the western Wadden Sea an evaluation of primary production found that pelagic primary production dominated (microphytobenthic production was  $118 \text{ gC m}^{-2} \text{ yr}^{-1}$ ), whether evaluated with model calculations (Baretta & Ruardij 1989) or field measurements (deWilde & Beukema 1984 in Baretta & Ruardij 1989). In the Bay of Saint Brieu (France), primary production of the benthic system was estimated at  $12 \text{ gC m}^{-2} \text{ yr}^{-1}$  with a biomass of  $1.6 \text{ gC m}^{-2}$  (Chardy et al. 1993) using a non-linear inverse model by Mercier 1986); the supply of detritus to the benthic system of Saint Brieu Bay was  $328 \text{ gC m}^{-2} \text{ yr}^{-1}$ , mostly through imports and pelagic primary production, raising the total food supply to  $350 \text{ gC m}^{-2} \text{ yr}^{-1}$ , similar to that contributed by the microphytobenthos on the Brouage mudflat. In the Bay of Morlaix, France, Chardy & Dauvin (1992) assessed phytoplankton production at 209, import of POC at 110, and microphytobenthic production at  $10 \text{ gC m}^{-2} \text{ yr}^{-1}$ . The benthic systems of the bays of Saint Brieu and Morlaix are typical detritus-dominated systems. The Brouage ecosystem, however, is microphytobenthos-dominated; this is consistent with a comparison between Marennes-Oléron

Bay and 10 other coastal and estuarine ecosystems (Dame & Prins 1998).

#### High throughput and cycling activity of meiofauna

Meiofauna represents 10% of total macrofaunal biomass, but its throughput is 1.6 times higher and its production is twice the macrofaunal production (including oysters); a similar observation has been made in other ecosystems. A 1967 study at Long Island showed that the metabolism of macrofauna accounted for only a small part of the oxygen uptake, and meiofauna and bacteria utilized the major portion of the energy consumed by the bottom ecosystem (Carey 1967 in Kuipers et al. 1981). In the western Wadden Sea, Kuipers et al. (1981) reported that a nematode had a weight specific metabolic rate 21 times higher than a macrobenthic individual. In the Bay of Saint Brieu, Chardy et al. (1993) obtained an annual P/B rate of  $11 \text{ yr}^{-1}$  for the meiofauna, lower than our P/B rate of  $31 \text{ yr}^{-1}$ . In the Bay of Saint Brieu, meiofauna and macrofauna production are equal, although the meiofauna is only 8% of the macrofauna biomass. In Morlaix Bay, Chardy & Dauvin (1992) obtained a P/B rate of  $13.4 \text{ yr}^{-1}$ , and a meiofauna production equivalent to the macrofauna production with 18% of its biomass.

The meiofauna in Brouage was initially thought to consist mostly of carnivorous species, thus constituting an isolated compartment. However, recent studies (Rzeznik pers. comm.) have shown that the fraction of carnivorous meiofauna is only 5%, which implies that this compartment exchanges material with other compartments and the meiofauna have a role in system functioning.

### High throughput and cycling activities of bacteria

The biomass of pelagic bacteria at Brouage is unknown. Since the flows linked to this compartment have a significant influence on the result of the present computations, the model cannot be validated without additional measurements. Nonetheless, the relative activities of the benthic and pelagic bacterial compartments can be examined.

On the Brouage mudflat, benthic bacterial production is temperature dependent, and a wide range of values has been reported (Garet 1996). For example, benthic bacterial production can attain  $3 \text{ gC m}^{-2} \text{ d}^{-1}$  in summer, compared to only  $0.19 \text{ gC m}^{-2} \text{ d}^{-1}$  in winter (the lower boundary in our computations). *In situ* measurements of bacterial production are based on indirect measurements, and therefore values of bacterial production depend on the method and conversion factors used (Ducklow 2000 in Anderson & Ducklow 2001). Thus, while benthic and pelagic bacteria were among the most active compartments, our model may still underestimate benthic bacterial activity on the mudflat.

The bacterial production/net primary production ratio (BP/NPP) is a normalized value of bacterial activity that can be compared with other ecosystems. In our system, the average value for BP/NPP was 38%, higher than the values of 20 to 30% reported for pelagic systems (Cole et al. 1988 in Anderson & Ducklow 2001). Schwingamer et al. (1986) found a BP/NPP ratio ranging from 25.5 to 257%, depending on the number of active bacteria in the system, and Newell & Linley 1984 gave a value of 19% for the English Channel.

In Saint Brieuc Bay the value of BP/benthic NPP obtained for the benthic system is 700% (calculated from Chardy et al. 1993), but there is also an input of phytoplankton and detritus from the water column, decreasing the adjusted value of BP/(imports+benthic PP) to 12%. Our value of 37% in the pelagic system is higher and is consistent with an important cycling of carbon in the bacterial compartment (Fig. 7).

### Low cycling for an estuarine ecosystem

Baird et al. (1991) compared 6 marine ecosystems modelled as food webs with the same level of aggregation as we did on Brouage mudflat, and this allows a comparison of the 2 ecosystems (Wulff & Ulanowicz 1989). The number of cycling pathways assessed for the Brouage system is high (37) compared to other estuaries and bays with 14 to 25 assessed pathways: Swarktops Estuary, 14; Ems estuary, 25; Chesapeake Bay, 20; Baltic Sea, 22. In upwelling systems, the

number ranges from 1 (Benguela) to 15 (Peru) (Baird et al. 1991).

The Brouage system is less dependent upon recycling than other estuaries or bays, in spite of possessing various cycling pathways. The Finn Cycling Index (FCI = 21%, Table 7) is lower than in other estuaries or bays: Swarktops Estuary, 43.8; Ems Estuary, 28 (Baird et al. 1991); Delaware Bay, 37.3; Narragansett Bay, 48.2 (Monaco & Ulanowicz 1997). The Brouage FCI value is higher in comparison to upwelling systems where the arrival of nutrients in large quantities makes recycling unimportant (0.01% in Benguela, 3.2% in Peru). It is closer to those obtained in the Baltic Sea (FCI = 22%, Baird et al. 1991) and Chesapeake Bay (FCI = 24.1%, Monaco & Ulanowicz 1997).

The 3 US mid-Atlantic estuaries compared by Monaco & Ulanowicz (1997), Delaware Bay, Narragansett Bay, and Chesapeake Bay, were phytoplankton-dominated, whereas the Brouage system is microphytobenthos dominated and the export of microphytobenthos to the water column is important. At Brouage the 'outwelling hypothesis' (Odum 1980) applies, i.e. the nutrients are not utilized *in situ* but exported to the surrounding region. In other words, the mudflat produces more material than can be degraded or stored within the system, and the surplus is exported to the Marennes-Oléron Bay and beyond.

### Production of the system

The exports can be divided into 3 categories: unused primary production, detrital export, and secondary production. The system's production is characterized by material exported through the compartments: oyster commercial production, birds, and fish that exit the system.

The throughput of oysters is of the same order of magnitude as that of non-cultivated macrofauna, but the oyster compartment has more than twice the biomass (Fig. 2). Each of these compartments reaches maximal metabolic rates (the maximum rates allowed by the inequalities, Table 3), suggesting that they are not food limited. Competition for food resources between oysters and other macrofauna appears negligible in Brouage. The main competitors of oysters at Marennes-Oléron are *Cerastoderma edule*, *Crepidula fornicata* and *Mytilus edulis* (Sauriau 1987, Sauriau et al. 1989), all of which are rare at Brouage. However, oyster throughput represents 6.6% of the total primary production at Brouage, versus 7.9% for the rest of the macrofauna. The total macrofaunal activity (16% of the total primary production) is not negligible. On Takapoto Atoll, where the pearl oyster *Pinctada mar-*



*garitifera* is cultured, Niquil et al. (2001) evaluated this rate at 4.1% and thus considered that oyster farming was not food limited.

When evaluating the carrying capacity of the system, one must consider both phytoplanktonic and microphytobenthic production values. The primary production turnover time was computed to be 4.6 d at Brouage. This is still greater than the upper limit for productive ecosystems (4 d) suggested by Dame & Prins (1998), but it is much smaller than the biomass/throughput rates of oyster farms (47 d). The water residence time is short in MOB (<10 d; Bacher 1989, Bacher et al. 1998), which allows a constant renewal of pelagic resources. Hence, for the Brouage system we assume that the flow arriving with each tide is renewed every 10 d on average, and consequently there is no food limitation for oysters or competition for food among the benthic macrofauna.

This result is paradoxical, since most earlier studies on carrying capacities (Héral et al. 1989, Bacher 1989, 1991, Raillard et al. 1993, Raillard & Ménesguen 1994) showed an important density-dependence of oyster growth. Moreover, growth decreased in MOB when the biomass of trophic competitors of oysters was estimated to be 20% of oyster stocks (Sauriau 1987, Héral et al. 1989, Bacher 1991, Sauriau & Bacher 1991, Sauriau et al. 1998). Thus the functioning of the entire MOB (of which Brouage is only a part), needs to be investigated to determine how fast food is exported from the mudflat, since the microphytobenthos contributes to the microalgal community in other parts of the Bay (Zurburg et al. 1994).

The major problem encountered in the evaluation of fish-related flows is methodological: it is very difficult to assess a moving population. At Brouage, the turbidity of the water does not permit visual detection, fish species live both on and off the mudflat, and the access area is too wide to allow interception-type studies, similar to those done in narrower channels, like in Mont Saint Michel (Lefeuvre et al. 1999).

As quantitative data on nekton uptake or production were not available for the Brouage mudflat, the nekton compartment has not been explicitly constrained. Our result appears high: the total throughput of nekton was  $120 \text{ gC m}^{-2} \text{ yr}^{-1}$ , i.e. one quarter of the entire primary production. The main contributor to the nekton throughput was the microphytobenthos ( $81 \text{ gC m}^{-2} \text{ yr}^{-1}$ ). Nekton consumption and production can be overestimated, because it is 1 of the 3 shortest exit pathways for microphytobenthos (the other 2 are phytoplankton and benthic detritus). One of the main nektonic species that feeds on microphytobenthos is the grey mullet *Liza ramada*, and its predation on the ecosystem has not, to our knowledge, been evaluated anywhere on

the East Atlantic coast. In the US mid-Atlantic estuaries studied by Monaco & Ulanowicz (1997), the fish compartment was divided into carnivorous and planktivorous fish, and grazing of benthic algae was not permitted.

Lafaille et al. (1998) estimated the contribution of fish communities to organic matter outflows from salt marshes into adjacent marine coastal waters at 0 to 10% in the Bay of Mont Saint Michel (France), far lower than our result of 29%. One factor contributing to the difference between flow estimates is that the Mont Saint Michel Bay study site was accessible to the fish on 43% of the tidal cycles only. At Brouage the fish compartment is the next largest heterotrophic compartment after bacteria in terms of throughputs (Fig. 6); thus, validation of our estimate is crucial. Nonetheless, this flow does not have a significant influence on the values of flows that precede it (sensitivity analysis; data not shown); the material would just follow other pathways if we constrained it artificially. The flow from the nekton is another outflow of 'non-used microphytobenthos', such as the outflows from the phytoplankton and suspended detritus compartments. This is consistent with the outwelling concept (Odum 1980) evoked above.

Birds did not achieve the maximum consumption allowed by the model, although their prey did. The tight link between estuarine ecosystems and shorebirds (Baird & Milne 1981) is confirmed here. The consumption efficiency of birds on the benthic macrofauna (consumption of birds/production of macrofauna) is 58%. That is nearly 5 times higher than the value calculated in the Tagus Estuary (Portugal) where sea gulls were the most important predators (Moreira 1997). At the Brouage mudflat, gulls do not feed on the mudflat; this role is played by knots (*Calidris canutus*) and dunlins (*C. alpina*), which make up 68% of the total number of birds that forage on the mudflat. Moreira (1997) suggested that uptake of invertebrates by gulls in the Tagus estuary may have been overestimated because of their opportunistic diet, even though gulls do consume a significant percentage of invertebrates (Vernon 1972, Mudge & Ferrus 1982, Curtis et al. 1985). In addition, gulls nip off the siphons of bivalves (Moreira 1997), reducing the impact on bivalve mortality because bivalves regenerate their siphons quickly (Hodgson 1982). In contrast to gulls, knots and dunlins consume *M. balthica* and other bivalves and snails whole (Zwarts & Blomert 1992 and references therein). They prefer *Macoma balthica*, *Nereis diversicolor* and *Corophium volutator*, all of which are abundant on the Brouage mudflat (Kang 1999). Thus, the bird compartment is important in the Brouage mudflat food web.

## CONCLUSIONS

The Brouage mudflat sustains a high primary production dominated by microphytobenthos, and low carbon cycling. The competition for food is low at the herbivore level, but there is a risk of food depletion at higher predator level (nekton and birds), despite high meio- and macrofauna production. Validation of the model cannot be completed without further field investigations of the nekton population, pelagic bacterial and protozoan populations and metabolism, and pelagic primary production.

Coupling benthic and pelagic systems into the same computation yielded interesting results for the Brouage ecosystem, where the 2 systems are closely linked. This is a first step; the influence of the water column on the benthic system should be addressed on the scale of the entire bay to evaluate the impact of hydrodynamic phenomena on carbon flows and trophic level cycling in the ecosystem.

### Appendix 1. Method of inverse analysis

The method is composed of 4 steps (Vézina & Platt 1988): (1) *Construct a conceptual model.* Identify the groups of organisms (compartments) and specify the allowable flows of matter between them:

$$\mathbf{F} = [\mathbf{f}_1 \dots \mathbf{f}_i \dots \mathbf{f}_N] \quad (1)$$

where  $\mathbf{F}$  is the vector resulting from all possible flows;  $\mathbf{f}$  is the vector of a single flow; and  $N$  is the number of all possible flows.

(2) *Construct a linear system of equations that describes the relationships between flows.* The following criteria must be met: (a) the flows into each compartment must balance the flows out of the compartment, because of the steady state assumption, and (b) measured flows provide complementary equations. The system of linear equations obtained can then be formulated as a matrix:

$$[\mathbf{A}]_{b,N} [\mathbf{F}]_{N,1} = [\mathbf{B}]_{b,1} \quad (2)$$

where  $\mathbf{A}$  is the matrix of linear equations;  $b$  is the number of equations, characterised by  $b < N$ ; and  $\mathbf{B}$  is the matrix of solutions to the linear equations.

(3) *Construct a set of constraints (h, inequalities).* These ensure that all flows are positive, and constrain the assimilation efficiencies between observed minimal and maximal values, or any other rates used with observed biomasses (respiration, ingestion...).

$$[\mathbf{G}]_{h,N} [\mathbf{F}]_{N,1} > [\mathbf{H}]_{h,1} \quad (3)$$

where  $\mathbf{G}$  is the matrix of linear inequalities;  $h$  is the number of inequalities, characterised by  $b + h < N$ ; and  $\mathbf{B}$  is the bounds of linear combinations of flows defined by  $\mathbf{G}$ .

(4) *Impose the parsimony principle.* This final condition ensures a unique solution; in other words, the chosen solution is the minimum of a norm.

$$\text{Norm}(\mathbf{F}) \text{ is minimal} \quad (4)$$

For more details on the solution of the equations see Vézina & Platt (1988) and Vézina (1989).

*Acknowledgements.* This work was supported by a grant from IFREMER on fisheries and bivalve culture interactions under the scientific responsibility of N.N. We thank G. Blanchard, C. Dupuy and D. Fichet (LBEM La Rochelle), G. Boucher (UMR CNRS/MNHN), A. Bodoy, G. Claireaux, D. Degré, J. M. Guarini, P. Lafaille, F. Lagardère and P. Richard (CREMA l'Houmeau), A. Burd, G. A. Jackson and T. Richardson (Texas A&M University), P. Chardy (LOB Arcachon), F. Corre (LPO Moëze), M. Héral and A. Nadeau (IFREMER), and F. E. Vauchez for data, ideas, criticism and advice. We also thank the anonymous reviewers for useful comments and suggestions.

### LITERATURE CITED

- Anderson TR, Ducklow HW (2001) Microbial loop carbon cycling in ocean environments studied using a simple steady-state model. *Aquat Microb Ecol* 26:37–49
- Asmus H (1987) Secondary production of an intertidal mussel bed community related to its storage and turnover compartments. *Mar Ecol Prog Ser* 39:251–266
- Asmus H, Asmus RM (1993) Phytoplankton-mussel bed interactions in intertidal ecosystems. *NATO Adv Sci Series Vol G33*
- Azeitero UMM, Marques JC (1999) Temporal and spatial structure in the suprabenthic community of a shallow estuary (western Portugal: Mondego River estuary). *Acta Oecol Int J Ecol* 20(4):333–342
- Bachelet G (1982) Quelques problèmes liés à l'estimation de la production secondaire. Cas des bivalves *Macoma balthica* et *Scrobicularia plana*. *Oceanol Acta* 5(4):421–431
- Bacher C (1989) Capacité trophique du bassin de Marennes-Oléron: couplage d'un modèle de transport particulaire et d'un modèle de croissance de l'huître *Crassostrea gigas*. *Aquat Living Resour* 48:199–214
- Bacher C (1991) Etude de l'impact du stock d'huîtres et des mollusques compétiteurs sur les performances de croissance de *Crassostrea gigas*, à l'aide d'un modèle de croissance. *ICES Mar Sci Symp* 192:41–47
- Bacher C, Duarte P, Ferreira JG, Héral M, Raillard O (1998) Assessment and comparison of the Marennes-Oléron Bay (France) and Carlingford Lough (Ireland) carrying capacity with ecosystem models. *Aquat Ecol* 31:379–394
- Baird D, Milne H (1981) Energy flow in the Ythan Estuary, Aberdeenshire, Scotland. *Estuar Coast Shelf Sci* 13: 455–472
- Baird D, Evans PR, Milne H, Pienkowski MW (1985) Utilization by shorebirds of benthic invertebrate production in intertidal areas. *Oceanogr Mar Biol Annu Rev* 23: 573–597
- Baird D, McGlade JM, Ulanowicz RE (1991) The comparative ecology of six marine ecosystems. *Phil Trans R Soc Lond* 333:15–29
- Banase K, Mosher S (1980) Adult body mass and annual Production/biomass relationships of field populations. *Ecol Monogr* 50(3):355–379
- Baretta JW, Ruardij P (1989) Carbon flow in the western Wadden Sea: model calculations. In: Ros JD (ed) Topics in marine biology. *Sci Mar* 53(2-3):523–529
- Barillé L, Héral M, Barillé-Boyer AL (1997) Modélisation de l'écophysologie de l'huître *Crassostrea gigas* dans un environnement estuarien. *Aquat Living Resour* 10:31–48
- Bassoullet P, Le Hir P, Goulet D, Robert S (2000) Sediment transport over an intertidal mudflat: field investigations and estimation of fluxes within the 'Baie de Marennes-Oléron' (France). *Cont Shelf Res* 20:1635–1653

- Bayne BL, Worrall CM (1980) Growth and production of mussels *Mytilus edulis* from two populations. *Mar Ecol Prog Ser* 3:317–328
- Bayne BL, Hawkins AJS, Navarro E (1987) Feeding and digestion by the mussel *Mytilus edulis* L. (bivalvia: mollusca) in mixtures of silt and algal cells at low concentrations. *J Exp Mar Biol Ecol* 111:1–22
- Bayne BL, Iglesias JIP, Hawkins AJS, Navarro E, Héral M, Deslous-Paoli JM (1993) Feeding behaviour of the mussel, *Mytilus edulis*: responses to variations in quantity and organic content. *J Mar Biol Assoc UK* 73:813–829
- Beukema JJ, Cadée GC (1991) Growth rates of the bivalve *Macoma balthica* in the Wadden Sea during a period of eutrophication: relationships with concentrations of pelagic diatoms and flagellates. *Mar Ecol Prog Ser* 68: 249–256
- Blanchard GF, Guarini JM, Richard P, Gros P (1997) Seasonal effect of the relationship between the photosynthetic capacity of intertidal microphytobenthos and temperature. *J Phycol* 33:723–728
- Blanchard GF, Guarini JM, Bacher C, Huet V (1998) Contrôle de la dynamique à court terme du microphytobenthos intertidal par le cycle exondation-submersion. *CR Acad Sci Paris* 321:501–508
- Blanchard GF, Guarini JM, Provot L, Richard P, Sauriau PG (2000) Measurement of ingestion rate of *Hydrobia ulvae* (Pennant) on intertidal epipellic microalgae: the effect of mud snail density. *J Exp Mar Biol* 255:247–260
- Castel J, Labourg PJ, Escaravage V, Auby I, Garcia ME (1989) Influence of seagrass beds and oyster parks on the abundance and biomass patterns of meio- and macrobenthos in tidal flats. *Estuar Coast Shelf Sci* 28:71–85
- Chambers MR, Milne H (1975) The production of *Macoma balthica* (L.) in the Ythan estuary. *Estuar Coast Mar Sci* 3: 443–455
- Chardy P, Dauvin JC (1992) Carbon flows in a subtidal fine sand community from the western English Channel: a simulation analysis. *Mar Ecol Prog Ser* 81:147–161
- Chardy P, Gros P, Mercier H, Monbet Y (1993) Benthic carbon budget for the Bay of Saint Brieuc (Western Channel). Application of inverse method. *Oceanol Acta* 16:687–694
- Cloern J (1987) Turbidity as a control on phytoplankton biomass and productivity in estuaries. *Cont Shelf Res* 7: 1367–1381
- Cognie B, Barillé L, Rincé Y (2001) Selective feeding of the oyster *Crassostrea gigas* fed on a natural microphytobenthos assemblage. *Estuaries* 24(1):126–131
- Cranford PJ, Peer DL, Gordon DC (1985) Population dynamics and production of *Macoma balthica* in Cumberland Basin and Shepody Bay, Bay of Fundy. *Neth J Sea Res* 19: 135–146
- Curtis DJ, Galbraith CG, Smyth JC, Thompson DBA (1985) Seasonal variations in prey selection by estuarine Black-headed gulls. *Estuar Coast Shelf Sci* 21:75–89
- Dame RF, Patten BC (1981) Analysis of energy flows in an intertidal oyster reef. *Mar Ecol Prog Ser* 5:115–124
- Dame RF, Prins TC (1998) Bivalve carrying capacity in coastal ecosystems. *Aquat Ecol* 31:409–421
- Deceunink B (1997) Plus de 2 400 000 oiseaux d'eau hivernants dénombrés en France à la mi-janvier 1996! *Ornithos* 5(1):12–17
- Deceunink B, Mahéo R (1998) Limicoles de l'enquête nationale 1995–1996 et évolution des populations sur 12 ans. *Ornithos* 5:97–117
- Dechambenoy CL, Pontier F, Sirou F, Vouvé J (1977) Apport de la thermographie infrarouge aéroportée à la connaissance de la dynamique superficielle des estuaires (système Charente-Seudre-Anse de l'Aiguillon). *CR Acad Sci Paris Sér D* 284:1269–1272
- Desholm M (2000) The relationship between the number of staging dunlins *Calidris alpina* and the abundance of their benthic prey: the effect of severe winters. *Dan Ornitol Foren Tidsskr* 94:19–28
- Deslous-Paoli JM, Héral M, Masse H (1983) Bilan énergétique d'une population naturelle de *Crepidula fornicata* (L.) dans le bassin de Marennes-Oléron. In: IFREMER et CNRS Pirocéan (eds) Bases biologiques de l'aquaculture. Actes de colloques, Vol 1. IFREMER, Montpellier, p 109–124
- Deslous-Paoli JM, Sornin JM, Héral M (1987) Variations saisonnières *in situ* de la production et de la composition de trois mollusques estuariens (*Mytilus edulis*, *Crassostrea gigas*, *Crepidula fornicata*). *Halictis* 16 :223–245
- Deslous-Paoli JM, Boromthanarat S, Héral M, Boromthanarat W, Razet D (1990) Energy budget of a *Mytilus edulis* L. population during its first year on bouchots in the Bay of Marennes-Oléron. *Aquaculture* 91:49–63
- Deslous-Paoli JM, Lannou AM, Geairon P, Bougrier S, Railard O, Héral M (1992) Effect of the feeding behaviour of *Crassostrea gigas* on biosedimentation of natural particulate matter. *Hydrobiologia* 231:85–91
- Desprez M, Bachelet G, Beukema JJ, Ducrotoy JP and 5 others (1991) Dynamique des populations de *Macoma balthica* (L.) dans les estuaires du Nord-ouest de l'Europe: Première synthèse. In: Elliott M, Ducrotoy JP (eds) Estuaries and coasts: spatial and temporal intercomparisons. Olsen & Olsen Int Symp Ser, Fredensborg, p 159–166
- Dupuy C, Bel Hassen M, Le Gall S (1999) Protists as a trophic link between picocyanobacteria and the filter-feeding bivalve *Crassostrea gigas*. *Bull Inst Océanogr* 19:533–540
- Dupuy C, Pastoureaux A, Ryckaert M, Sauriau PG, Montanié H (2000) Impact of the oyster *Crassostrea gigas* on a microbial community in Atlantic coastal ponds near La Rochelle. *Aquat Microb Ecol* 22:227–242
- Essink K, Beukema JJ, Coosen J, Craeymeersch JA, Ducrotoy JP, Michaelis H (1991) Population dynamics of the bivalve mollusc *Scrobicularia plana* da Costa: comparisons in time and space. In: Elliott M, Ducrotoy JP (eds) Estuaries and coasts: spatial and temporal intercomparisons Olsen & Olsen Int Symp Ser, Fredensborg, p 167–172
- Fasham MJR (1985) Flow analysis of material in the marine euphotic zone. In: Ulanowicz RE, Platt T (eds) Ecosystem theory for biological oceanography. *Can Bull Fish Aquat Sci* 213:139–162
- Feuillet-Girard M, Héral M, Abrioux MF, Fontugne M (1994) Carbone organique dissous et particulaire de la colonne d'eau et de l'interface eau-sédiment du bassin de Marennes-Oléron: influence des huitres. *Oceanol Acta* 17(3):271–284
- Fichez R, Jickells TD, Edmunds HM (1992) Algal blooms in high turbidity, a result of the conflicting consequences of turbulence on nutrient cycling in a shallow water estuary. *Estuar Coast Shelf Sci* 35:577–592
- Finn J (1976) Measure of ecosystem structure and function derived from the analysis of flows. *J Theor Biol* 56:363–380
- Francesch O, Lopez Jamar E (1991) Dynamics, growth and production of *Abra Alba* and *Abra Nitida* from the La Coruna, NW of Spain. *Bol Inst Esp Oceanogr* 7(2):101–113
- Fuhrman JA, Azham F (1982) Thymidine incorporation as a measure of heterotrophic bacterioplankton production in marine surface waters: evaluation and field results. *Mar Biol* 66:109–120
- Garet MJ (1996) Transformation bactérienne de la matière organique dans les sédiments côtiers. Relation entre les métabolismes respiratoires et les activités exoprotéolytiques bactériennes. PhD thesis, University of Bordeaux II

- Gerdol V, Hughes RG (1994) Feeding behaviour and diet of *Corophium volutator* in an estuary in south eastern England. *Mar Ecol Prog Ser* 114:103–108
- Gerlach SA (1971) On the importance of meiofauna for benthos communities. *Oecologia* 6:176–190
- Giere O (1993) Meiobenthology, the microscopic fauna in aquatic sediments. Springer-Verlag, Berlin
- Goss-Custard JD, Jones RE, Newbery PE (1977) The ecology of the Wash I. Distribution and diet of wading birds (Charadrii). *J Appl Ecol* 14:681–700
- Gouleau D, Jouanneau JM, Weber O, Sauriau PG (2000) Short- and long-term sedimentation on Montportail-Brouage intertidal mudflat, Marennes-Oléron Bay, France. *Cont Shelf Res* 20:1513–1530
- Gouletquer P, Héral M (1997) Marine Molluscan production trends in France: from fisheries to aquaculture. In: Mackenzie CL, Hobart W, Kennedy V (eds) The history, present condition and future of the molluscan fisheries of North and Central America and Europe. NOAA Tech Rep NMFS 129:137–164
- Graf G, Rosenberg R (1997) Bioresuspension and Biodeposition, a review. *J Mar Syst* 11:269–278
- Guarini JM, Blanchard GF, Bacher C, Gros P and 5 others (1998) Dynamics of spatial patterns of microphytobenthic biomass: inferences from a geostatistical analysis of two comprehensive surveys in Marennes-Oléron Bay (France). *Mar Ecol Prog Ser* 166:131–141
- Guarini JM, Gros P, Blanchard GF, Bacher C (1999) La dynamique à court terme de la biomasse du microphytobenthos intertidal. Formalisation mathématique. *CR Acad Sci Paris* 322:363–373
- Guarini JM, Blanchard GF, Gros P, Gouleau D, Bacher C (2000) Dynamic model of the short-term variability of microphytobenthic biomass on temperate intertidal mudflats. *Mar Ecol Prog Ser* 195:291–303
- Guérault D, Désaunay Y (2001) Peuplement halieutique et nourricerie dans les secteurs d'expérimentation de l'ostréiculture en eau profonde dans le pertuis d'Antioche. *Revue Interne, DRV/RV/ECOHAL, Direction des Ressources Vivantes, IFREMER, Nantes*
- Guérault D, Dorel D, Désaunay Y (1996) Cartographie des nourriceries littorales de poissons du Golfe de Gascogne. MAPA MAP, IFREMER, Nantes
- Guillou J, Bachelet G, Desprez M, Ducrotoy JP and 6 others (1990) Les modalités de la reproduction de la coque (*Cerastoderma edule*) sur le littoral français de la Manche et de l'Atlantique. *Aquat Living Resour* 3:29–41
- Haney J, Jackson G (1996) Modelling phytoplankton growth rates. *J Plankton Res* 18:63–85
- Hawkins AJS, Navarro E, Iglesias JIP (1990) Comparative allometries of gut-passage time, gut content and metabolic faecal loss in *Mytilus edulis* and *Cerastoderma edule*. *Mar Biol* 105:197–204
- Hawkins AJS, Smith RFM, Bayne BL, Héral M (1996) Novel observations underlying the fast growth of suspension-feeding shellfish in turbid environments: *Mytilus edulis*. *Mar Ecol Prog Ser* 131:179–190
- Hawkins AJS, Bayne BL, Bougrier S, Héral M, Iglesias JIP, Navarro E, Smith RFM, Urrutia MB (1998) Some general relationships in comparing the feeding physiology of suspension-feeding bivalve molluscs. *J Exp Mar Biol Ecol* 219:87–103
- Hawkins CM (1985) Population carbon budgets and the importance of the amphipode *Corophium volutator* in the carbon transfer on a Cumberland basin mudflat, upper Bay of Fundy, Canada. *Neth J Sea Res* 19(2):165–176
- Héral M, Deslous-Paoli JM, Sornin JM (1983) Transferts énergétiques entre l'huître *Crassostrea gigas* et la nourriture potentielle disponible dans un bassin ostréicole: premières approches. *Oceanis* 9(3):169–194
- Héral M, Bacher C, Deslous-Paoli JM (1989) La capacité trophique des bassins ostréicoles. In: Troadec JP (ed) L'homme et les ressources halieutiques. IFREMER, Brest, p 225–259
- Hily C (1976) Peuplement benthique des Pertuis Charentais. PhD thesis, University of Western Brittany, Brest
- Hodgson AN (1982) Studies on wound healing, and an estimation of the rate of regeneration, of the siphon of *Scrobicularia plana* (da Costa). *J Exp Mar Biol Ecol* 62:117–128
- Iglesias JIP, Navarro E, Alvarez Jorna P, Armentina I (1992) Feeding particle selection and absorption in cockles *Cerastoderma edule* (L.) exposed to variable conditions of food concentration and quality. *J Exp Mar Biol Ecol* 162:177–198
- Joint I, Pomroy A (1981) Primary production in a turbid estuary. *Estuar Coast Shelf Sci* 13:303–316
- Joint I, Pomroy A (1993) Phytoplankton biomass and production in the southern North Sea. *Mar Ecol Prog Ser* 99:169–182
- Kang CK (1999) Structures trophiques et production secondaire dans les réseaux benthiques intertidaux du bassin de Marennes-Oléron: utilisation du traçage isotopique naturel. PhD thesis, University of Nantes
- Kuipers BR, de Wilde PAWJ, Creuzberg F (1981) Energy flow in a tidal flat ecosystem. *Mar Ecol Prog Ser* 5:215–221
- Lafaille P, Brosse S, Feunteun E, Baisez A, Lefeuvre JC (1998) Role of fish communities in particulate organic matter fluxes between salt marshes and coastal marine waters in the Mont Saint-Michel Bay. *Hydrobiologia* 373/374:121–133
- Langdon CJ, Newell RIE (1990) Utilization of detritus and bacteria by two bivalve suspension-feeders, the oyster *Crassostrea virginica* and the mussel *Geukensia demissa*. *Mar Ecol Prog Ser* 58:299–310
- Le Dréan-Quéneec'hdu S, Mahéo R (1997) Les limicoles séjournant dans les traicts du Croisic (presqu'île guérandaise, Loire-Atlantique): régime alimentaire et impact sur les populations de mollusques bivalves. *Alauda* 65(2):131–149
- Lefeuvre JC, Lafaille P, Feunteun E (1999) Do fish communities function as biotic vectors of organic matter between salt marshes and marine coastal waters? *Aquat Ecol* 33:293–299
- Le Gall S, Bel Hassen M, Le Gall P (1997) Ingestion of a bacterivorous ciliate by the oyster *Crassostrea gigas*: protozoa as a trophic link between picoplankton and benthic suspension feeders. *Mar Ecol Prog Ser* 152:301–306
- Legendre P, Legendre L (1998) Numerical ecology, 2nd edn. Elsevier, Oxford
- Le Hir P, Roberts W, Cazaillet O, Christie M, Bassoullet P, Bacher C (2000) Characterization of intertidal flat hydrodynamics. *Cont Shelf Res* 20:1433–1459
- Linley EAS, Newell RC, Lucas MI (1983) Quantitative relationships between phytoplankton, bacteria and heterotrophic microflagellates in shelf waters. *Mar Ecol Prog Ser* 12:77–89
- Loret P, Pastoureaud A, Bacher C, Delesalle B (2000) Phytoplankton composition and selective feeding of the pearl oyster *Pinctada margaritifera* in the Takapoto lagoon (French Polynesia): *in situ* study using optical microscopy and HPLC pigment analysis. *Mar Ecol Prog Ser* 199:55–67
- McLusky DS (1989) The estuarine ecosystem, 2nd edn. Chapman & Hall, New York
- Medernach L, Grémare A (1999) Comparaison de méthodes

- d'évaluation de la production secondaire d'une population de l'annélide polychète *Ditrupe arietina* (O. F. Muller). *Oceanol Acta* 22(3):337–352
- Mees J, Hamerlynck O (1992) Spatial community structure of the winter hyperbenthos of the Schelde-estuary, The Netherlands, and adjacent coastal waters. *Neth J Sea Res* 29:357–370
- Ménesguen A, Hoch T (1997) Modelling the biogeochemical cycles of elements limiting primary production in the English Channel. I. Role of thermohaline stratification. *Mar Ecol Prog Ser* 146:173–188
- Mercier H (1986) Determining the general circulation of the ocean: a non linear inverse problem. *J Geophys Res* 91: 5103–5109
- Monaco ME, Ulanowicz RE (1997) Comparative ecosystem trophic structure of three US mid-Atlantic estuaries. *Mar Ecol Prog Ser* 161:239–254
- Montagna PA, Blanchard GF, Dinét A (1995) Effects of production and biomass of intertidal microphytobenthos on meiofaunal grazing rates. *J Exp Mar Biol Ecol* 185:149–165
- Moreira F (1996) Diet and feeding behaviour of grey plovers *Pluvialis squatarola* and redshanks *Tringa totanus* in a southern European estuary. *Ardeola* 43(2):145–156
- Moreira F (1997) The importance of shorebirds to energy fluxes in a food web of a south European estuary. *Estuar Coast Shelf Sci* 44:67–78
- Mucha AP, Costa MH (1999) Macrozoobenthic community structure in two Portuguese estuaries: relationship with organic enrichment and nutrient gradients. *Acta Oecol Int J Ecol* 20(4):363–376
- Mudge GP, Ferrus PN (1982) The feeding ecology of five species of gulls (aves: Larini) in the inner Bristol Channel. *J Zool Lond* 197:497–510
- Newell RC, Field JG (1983) The contribution of bacteria and detritus to carbon and nitrogen flow in a benthic community. *Mar Biol Lett* 4:23–36
- Newell RC, Linley EAS (1984) Significance of microheterotrophs in the decomposition of phytoplankton: estimates of carbon and nitrogen flow based on the biomass of plankton communities. *Mar Ecol Prog Ser* 16:105–119
- Niquil N (1998) Etude par la modélisation du fonctionnement et de la stabilité du réseau trophique planctonique d'un lagon d'atoll (Takapoto, Polynésie Française). PhD thesis, University of Perpignan
- Niquil N, Pouvreau S, Sakka A, Legendre L, Addressi L, LeBorgne R, Charpy L, Delesalle B (2001) Trophic web and carrying capacity in a pearl oyster farming lagoon (Takapoto, French Polynesia). *Aquat Living Resour* 14: 165–174
- Odum EP (1980) The status of three ecosystem-level hypotheses regarding salt marsh estuaries: tidal subsidy, outwelling and detritus-based food chains. In: Kennedy VS (ed) *Estuarine perspectives*. Academic Press, London, p 485–495
- Pace ML, Glasser JE, Pomeroy LR (1984) A simulation analysis of continental shelf food webs. *Mar Biol* 82:47–63
- Piersma T, Davidson NC (1992a) The migration of knots. *Water Study Group Bull* 64(Suppl):1–29
- Piersma T, Davidson NC (1992b) The migration and annual cycles of five subspecies of knots in perspective. *Water Study Group Bull* 64(Suppl):187–197
- Pigeot J, Miramand P, Garcia-Meunier P, Guyot T, Séguignes M (2000) Présence d'un nouveau prédateur de l'huître creuse, *Ocenebrellus inornatus* (Récluz, 1851), dans le bassin conchylicole de Marennes-Oléron. *CR Acad Sci Paris* 323:697–703
- Raffaelli D, Conacher A, McLahan H, Emes C (1989) The role of epibenthic crustacean predators in an estuarine food web. *Estuar Coast Shelf Sci* 28:149–160
- Raillard O, Ménesguen A (1994) An ecosystem box model for estimating the carrying capacity of a macrotidal shellfish system. *Mar Ecol Prog Ser* 115:117–130
- Raillard O, Deslous-Paoli JM, Héral M, Razet D (1993) Modelling growth and feeding of the Japanese oyster *Crassostrea gigas* in Marennes-Oléron Bay (France). *Oceanol Acta* 16:73–82
- Ravail B, Héral M, Maestrini S, Robert JM (1988) Incidence de la Charente sur la capacité trophique du bassin ostréicole de Marennes-Oléron. *J Rech Océanogr* 13(1-2):48–52
- Riera P, Richard P (1997) Temporal variations of  $\delta^{13}\text{C}$  in particulate organic matter and oyster *Crassostrea gigas* in Marennes-Oléron Bay (France): effect of freshwater inflow. *Mar Ecol Prog Ser* 147:105–115
- Riisgard HU (1991) Suspension feeding in the polychaete *Nereis diversicolor*. *Mar Ecol Prog Ser* 70:29–37
- Rosenberg R, Loo LO (1983) Energy-flow in a *Mytilus edulis* culture in western Sweden. *Aquaculture* 35:151–161
- Sauriau PG (1987) Les mollusques noncultivés du bassin de Marennes-Oléron: quantification et répartition géographique des stocks. *Haliotis* 16:527–541
- Sauriau PG, Bacher C (1991) Cartographie krigée des mollusques suspensivores compétiteurs trophiques des huîtres du bassin de Marennes-Oléron: implications pour la planification de l'échantillonnage. *J Rech Océanogr* 16(1-2):1–4
- Sauriau PG, Mouret V, Rincé JP (1989) Organisation trophique de la malacofaune benthique non cultivée du bassin ostréicole de Marennes-Oléron. *Oceanol Acta* 12(2): 193–204
- Sauriau PG, Pichocki-Seyfried C, Walker P, De Montaudouin X, Palud C, Héral M (1998) *Crepidula fornicata* L. (mollusque, gastéropode) en baie de Marennes-Oléron: cartographie des fonds par sonar à balayage latéral et estimation du stock. *Oceanol Acta* 21(2):353–362
- Sautour B, Castel J (1993a) Distribution of zooplankton populations in Marennes-Oléron Bay (France), structure and grazing impact of copepod communities. *Oceanol Acta* 16(3):279–290
- Sautour B, Castel J (1993b) Feeding behaviour of the coastal copepod *Euterpina acutifrons* on small particles. *Cah Biol Mar* 34:239–251
- Sautour B, Castel J (1998) Importance of microzooplanktonic crustaceans in the coastal food chain: Bay of Marennes-Oléron, France. *Oceanol Acta* 21(1):105–112
- Schwinghamer P, Hargrave B, Peer D, Hawkins CM (1986) Partitioning of production and respiration among size groups of organisms in an intertidal benthic community. *Mar Ecol Prog Ser* 31:131–142
- Shaw P, Purdie DA (2001) Phytoplankton photosynthesis-irradiance parameters in the near-shore UK coastal waters of the North Sea: temporal variation and environmental control. *Mar Ecol Prog Ser* 216:83–94
- Shumway SE, Cucci TL, Newell RC, Yentsch CM (1985) Particle selection, ingestion, and absorption in filter feeding bivalves. *J Exp Mar Biol Ecol* 91:77–92
- Soletchnik P, Héral M, Razet D, Bougrier S, Geairon P (1993) Bilan énergétique de l'huître creuse (*Crassostrea gigas*) durant la période de forte croissance en baie de Marennes-Oléron, France. *Int Council Explor Sea C.M.* 1993/K:40
- Soletchnik P, Gouletquer P, Héral M, Razet D, Geairon P (1996) Evaluation du bilan énergétique de l'huître creuse *Crassostrea gigas*, en baie de Marennes-Oléron (France). *Aquat Living Resour* 9:65–73
- Soletchnik P, Faury N, Razet D, Gouletquer P (1998) Hydro-

- biology of the Marennes-Oléron Bay. Seasonal indices and analysis of trends from 1978 to 1995. *Hydrobiologia* 386:131–146
- Sornin JM, Delmas D, Deslous-Paoli JM (1987) Evolutions quantitatives et qualitatives du seston dans une claire à huîtres : relation avec la sédimentation et la biodéposition. *Océanis* 13(4-5):531–541
- Sukhotin AA (1992) Respiration and energetics in mussels (*Mytilus edulis* L.) in the White Sea. *Aquaculture* 101: 41–57
- Turpie JK, Hockey PAR (1996) Foraging ecology and seasonal energy budgets of estuarine grey plovers *Pluvialis squatarola* and whimbrels *Numenius phaeopus* at the southern tip of Africa. *Adea* 84 (1/2):57–74
- Ulanowicz RE (1986) Growth and development. Springer-Verlag, New York
- Ulanowicz RE (1997) Ecology, the ascendant perspective. In: Allen TFH, Roberts DW (eds) Complexity in ecological system series. Columbia University Press, New York
- Vernon JDR (1972) Feeding habitats and food of the Black-headed and common gulls. Part 2—food. *Bird study* 19: 173–184
- Vézina AF (1989) Construction of flow networks using inverse methods. In: Wulff F, Field JG, Mann KH (eds) Network analysis in marine ecology: methods and applications. Coastal and marine studies, Vol 32. Springer-Verlag, Berlin, p 62–81
- Vézina AF, Pace ML (1994) An inverse model analysis of planktonic food webs in experimental lakes. *Can J Fish Aquat Sci* 51:2034–2044
- Vézina AF, Platt T (1988) Food web dynamics in the ocean. I. Best estimates using inverse methods. *Mar Ecol Prog Ser* 42:269–287
- Warwick RM, Price R (1975) Macrofauna production in an estuarine mudflat. *J Mar Biol Assoc UK* 55:1–18
- Wulff F, Ulanowicz RE (1989) A comparative anatomy of the Baltic Sea and Chesapeake Bay ecosystems. In: Wulff F, Field JG, Mann KH (eds) Network analysis in marine ecology: methods and applications. Coastal and marine studies, Vol 32. Springer-Verlag, Berlin, p 232–256
- Zeitzschel B (1980) Sediment-water interactions in nutrient dynamics. In: Coull TC, Tenore KR (ed) Marine benthic dynamics. University of South Carolina Press, Columbia, SC, p 195–218
- Zurburg W, Smaal A, Héral M, Dankers N (1994) Seston dynamics and bivalve feeding in the Bay of Marennes-Oléron (France). *Neth J Aquat Ecol* 26(3-4):459–466
- Zwarts L, Blomert AM (1992) Why knots *Calidris canutus* take medium-sized *Macoma balthica* when six prey species are available. *Mar Ecol Prog Ser* 83:113–128

Editorial responsibility: Otto Kinne (Editor),  
Oldendorf/Luhe, Germany

Submitted: April 3, 2002; Accepted: July 26, 2002  
Proofs received from author(s): December 9, 2002