



HAL
open science

A CUSUM test with sliding reference for ground resonance monitoring

Ahmed Jhinaoui, Laurent Mevel, Joseph Morlier

► **To cite this version:**

Ahmed Jhinaoui, Laurent Mevel, Joseph Morlier. A CUSUM test with sliding reference for ground resonance monitoring. The 6th International Workshop on Advanced Smart materials and Smart Structures Technology (ANCRISST 2011), Jul 2011, Dalian, China. pp.0. hal-01853014

HAL Id: hal-01853014

<https://hal.science/hal-01853014>

Submitted on 2 Aug 2018

HAL is a multi-disciplinary open access archive for the deposit and dissemination of scientific research documents, whether they are published or not. The documents may come from teaching and research institutions in France or abroad, or from public or private research centers.

L'archive ouverte pluridisciplinaire **HAL**, est destinée au dépôt et à la diffusion de documents scientifiques de niveau recherche, publiés ou non, émanant des établissements d'enseignement et de recherche français ou étrangers, des laboratoires publics ou privés.



OATAO is an open access repository that collects the work of Toulouse researchers and makes it freely available over the web where possible.

This is an author-deposited version published in: <http://oatao.univ-toulouse.fr/>
Eprints ID: 6732

To cite this document: Jhinaoui, Ahmed and Mevel, Laurent and Morlier, Joseph
A CUSUM test with sliding reference for ground resonance monitoring. (2011)
In: The 6th International Workshop on Advanced Smart materials and Smart Structures Technology (ANCRISST 2011), 25-26 Jul 2011, Dalian, China.

Any correspondence concerning this service should be sent to the repository administrator: staff-oatao@inp-toulouse.fr

A CUSUM Test with Sliding Reference for Ground Resonance Monitoring

Ahmed Jhinaoui¹ and Laurent Mevel

INRIA, Centre Rennes- Bretagne Atlantique, Rennes 35042, France

Joseph Morlier

*Université de Toulouse, ICA,
ISAE/INSA/UPS/ENSTIMAC, Toulouse 31055, France*

ABSTRACT

Ground resonance is potentially destructive oscillations that may develop on helicopters rotors when the aircraft is on or near the ground. Therefore, this unstable phenomenon has to be detected before it occurs in order to be avoided by the pilot. To predict the zones of instability, works have generally relayed on off-line modal analysis of the helicopter model. Unfortunately, this off-line analysis is not sufficiently reliable. The subspace-based cumulative sum CUSUM test, able of on-line monitoring, is a good alternative which permits - at once- to avoid the system identification for each flight point and to have more robust detection, with reduced costs. In this paper, we describe an alternative test- with a moving reference this time- in order to kill wrong alarms or premature responses that are observed for fixed-reference tests. Numerical results reported herein are driven from simulation data.

INTRODUCTION

Ground resonance is a recurrent phenomenon of instability for helicopters. It is due to the coupling between the lagging motions of the rotor blades and the fuselage in-plane oscillations.

Since the works of Coleman and Feingold [1], in which a description of this phenomenon and a mechanical analysis were first given, numerous methods –analytic and numeric- have emerged and many papers have been published on the subject [2]. The main goal of these contributions was to give a sufficiently accurate mechanical modeling and, then, to determine the instability zone- that is the values of the rotor angular velocity at which the resonance may occur (i.e. the system is unstable when

¹ will make the presentation on the workshop

one or more of the damping coefficients become negative). The disadvantage of this off-line and deterministic modal analysis is that it does not take into account the uncertainties for complex systems like helicopters. In fact, the dynamical behavior of this class of systems is function of much randomness (structural uncertainties, loads, erosion, fatigue...) so that the margins of stability could be affected [3]. The structure has, therefore, to be identified continuously in-flight and often tested on ground, which is costly in money and in time.

The subspace-based algorithm of detection offers an interesting alternative to deal with this problem. The main idea behind this method is to compute a criterion of instability at a stable reference and then, by some distance formula, determine when this distance is significantly different from zero. A comprehensive study of fault detection method can be found in [4,5].

A statistical cumulative sum (CUSUM) test [6] can be build for this subspace approach, in order to track eventual changes recursively i.e. in real-time. In previous works [7], the authors have investigated the capacities of this method to detect ground resonance. Results have shown that the test responds close to the instability but there still be a slight premature response before. This was predictable; the reference is taken far from the resonance region, so any slight change in the stability criterion (which is the value of the damping ratios) engenders a slight response of the test, and these responses are then cumulated in time, so that they could trigger a wrong alarm.

We describe herein an adaptive CUSUM test, which updates the reference recursively (sliding reference) and thus, kill all wrong responses. The paper is organized as follows: first, the principle of CUSUM subspace-based test is explained. Then, we give the analogous test for the case of sliding reference. Finally, both of two algorithms are applied to a simulation data of a helicopter with hinged-blades rotor.

SUBSPACE-BASED DETECTION WITH SLIDING REFERENCE

The subspace-based fault detection and isolation has enjoyed some popularity since its introduction in the seventies, and has found its application in many fields such as civil engineering and aeronautics. These methods are derived from the subspace-based identification which is reminded below, in its covariance-driven version. For more extended explanation, one can refer to [8].

Subspace Identification

Let consider the linear discrete system:

$$\begin{cases} x_{k+1} = F \cdot x_k + w_{k+1} \\ y_k = H \cdot x_k + v_k \end{cases} \quad (1)$$

Where $x \in \mathfrak{R}^n$ is the state vector, $F \in \mathfrak{R}^{n \times n}$ the state transition matrix, $H \in \mathfrak{R}^{r \times n}$ the observation matrix

and $y \in \mathfrak{R}^r$ the output vector. The vectors w and v are two white Gaussian noises with zero means.

The number of sensors r is chosen so that it is inferior

The classical subspace identification method consists in building the Hankel matrix filled with the output covariances. Then, from a well-known factorization of this matrix into a product of the observability matrix and the controllability matrix, one can deduce the eigenstructure of the system in (1).

Let \mathbf{H}^{cov} be the covariance-driven Hankel matrix of dimension $(p+1)r \times qr$, with p and q the tail

length of output data.

$$\mathbf{H}^{\text{cov}} = \begin{pmatrix} R_1 & R_2 & \cdots & R_q \\ R_2 & R_3 & \cdots & R_{q+1} \\ \vdots & \vdots & \ddots & \vdots \\ R_{p+1} & R_{p+2} & \cdots & R_{p+q} \end{pmatrix} \quad (2)$$

Where $R_i = \mathbf{E} (y_k y_{k-i}^T)$ is the correlation of the output data and \mathbf{E} is the expectation operator. For a large number of data N , R_i could be estimated by $R_i = \frac{1}{N} \sum_{k=i+1}^N y_k y_{k-i}^T$.

One can easily demonstrate that \mathbf{H}^{cov} posses the factorization property:

$$\mathbf{H}^{\text{cov}} = \mathbf{O}_{p+1} \cdot \mathbf{C}_q, \text{ with } \mathbf{O} \text{ and } \mathbf{C}, \text{ respectively, the observability and the Controllability matrices.}$$

And:

$$\mathbf{O}_{p+1} = \begin{bmatrix} F \\ FH \\ \vdots \\ FH^p \end{bmatrix} \quad (3)$$

The subspace spanned by the left part of Hankel decomposition, namely the observability matrix, contains all the information about the eigenstructure of the system. This matrix can be obtained from a Singular Values Decomposition (SVD) of \mathbf{H}^{cov} :

$$\mathbf{H}^{\text{cov}} = \begin{bmatrix} U_1 & U_0 \end{bmatrix} \begin{bmatrix} \Sigma_1 & \\ & \Sigma_0 \end{bmatrix} V^T, \mathbf{O} = U_1 \Sigma_1^{1/2} \quad (4)$$

Then, to extract the matrices of transition and observation F and H , a least square minimization is made:

$$\overline{\mathbf{O}} F = \underline{\mathbf{O}}, \text{ with } \overline{\mathbf{O}} = \begin{bmatrix} H \\ HF \\ \vdots \\ HF^{p-1} \end{bmatrix}, \underline{\mathbf{O}} = \begin{bmatrix} HF \\ HF^2 \\ \vdots \\ HF^p \end{bmatrix} \quad (5)$$

Once F and H found, the eigenvalues and the observed eigenvectors (λ, ϕ_λ) are computed by resolving the equations:

$$\det(F - \lambda I) = 0, (F - \lambda I)\phi_\lambda = 0, \phi_\lambda = H\phi_\lambda \quad (6)$$

The couple (λ, ϕ_λ) is the eigenstructure of the system. It is stacked into the vector $\theta = \begin{pmatrix} \Lambda \\ \text{vec } \Phi \end{pmatrix}$ where Λ

is the vector whose elements are the eigenvalues λ_i and Φ is the matrix whose columns are the mode shapes ϕ_i .

Subspace-Based Fault Detection

The fault detection consists in monitoring the eigenstructure and determining if any change

has occurred on it. For that, a reference state θ_0 and some distance, from this reference, called residual are defined.

That distance is chosen as the product between a left kernel S of the matrix of observability (or of \mathbf{H}^{cov}) at the reference, and this matrix at the current state θ : $S^T(\theta_0) \cdot O_{p+1}(\theta)$ or $S^T(\theta_0) \cdot H^{\text{cov}}_{p+1,q}(\theta)$, S is taken so that $S^T \cdot S = Id$.

This distance is null when the current eigenstructure θ is close to θ_0 , and different from zero, else. We build then the residual below [6]:

$$\zeta_N = \sqrt{N} \cdot \text{vec}(S^T(\theta_0) H^{\text{cov}}(\theta)) = \frac{1}{N} \sum_{k=q}^{N-p} \text{vec}(S^T(\theta_0) Y_k^+ Y_k^{-T}) \quad (7)$$

Where $Y_k^+ = (y_k^T \quad \dots \quad y_{k+p}^T)^T$ and $Y_k^- = (y_k^T \quad \dots \quad y_{k-q+1}^T)^T$ and N the number of output data we have.

This residual is not useful for real-time detecting of instability on helicopters. First, because it is computed once one has all the N data. And second, because for an aircraft, the change on an eigenvalue does not mean that there is no more stability. In fact, the eigenvalues of a helicopter changes all the time with the rotor angular velocity; the helicopter is unstable when one of the damping ratios is negative. The residual we have should then be expressed as function of the damping coefficients ρ_i , and recursively for online detection.

$Z_k(\rho) = J^T(\rho_0) \cdot \Sigma^{-1}(\theta_0) \cdot \text{vec}(S^T(\theta_0) \cdot Y_k^+ Y_k^-)$, J and Σ are the sensitivity and the covariance of the

residual. Consistent estimates of these matrices \hat{J} and $\hat{\Sigma}^{-1}$ are given in [5].

The CUSUM test to decide whether a change has occurred or no is (see [6,7] for more details):

$$\boxed{\begin{aligned} Sum_n(\rho_0) &= \sum_{k=q}^{n-p} \Sigma_k^{-1/2}(\theta_0) \cdot Z_k(\rho_0) \\ T_n(\rho_0) &= \max_{q \leq k \leq n-p} Sum_k(\rho_0) \\ g_n(\rho_0) &= T_n(\rho_0) - Sum_n(\rho_0) \end{aligned}} \quad \text{The two hypotheses to test are } \begin{cases} H_0 : E_{g_n(\rho_0)} \approx 0 \\ H_1 : E_{g_n(\rho_0)} > 0 \end{cases} \quad (8)$$

In order to have a response at the instability, the reference eigenstructure has to be taken close to the instable state. This is not possible for systems like helicopters, because it may lead to the destruction of the apparel. The reference is then taken far from resonance. In this case, any slight change in the damping would lead to a slight response of the test; these parasite responses are then cumulated and could trigger a false alarm. The modal analysis of a hinged blades helicopter given later in this paper will show that the damping ratios changes are not unimportant. So, the parasite responses would be significant.

CUSUM Test with Sliding Reference

The idea of tests with sliding reference derives from the adaptive algorithms which were investigated in some works [9,10,11]. These algorithms consist in subspace tracking by updating it,

using new coming data from sensors. The subspace which has to be tracked, in our case, is the left kernel $S(\theta_0)$. This kernel is now computed for a sliding reference θ_n .

The recursive residual Z_k writes this time:

(9)

$$Z_k(\rho_k) = J^T(\rho_k) \cdot \Sigma^{-1}(\theta_k) \cdot \text{vec}(S^T(\theta_k) \cdot Y_k^+ Y_k^-)$$

The kernel S_k is updated with the IV-PAST method that is investigated in [12,10] and is computed for the sample $k-l$ with k the current sample and l some time lag fixed by the user. The algorithm can be described as follows:

- Compute an initial kernel S_0 for some data tail N , $(y_q \dots y_{N-p})$
- Then with IV-PAST, if we have S_n , (computed for data y from sample $q+n-l-L$ to sample $q+n-l-p$, L is the length of the sliding window) S_{n+1} is computed
- J_n and Σ_n^{-1} are estimated as in the fixed-reference case but using S_n in calculus, for the current sample n
- The test is applied to compare the sliding reference at $n-l$ and the current state n

$$\begin{aligned} Sum_n &= \sum_{k=q}^{n-p} \Sigma_k^{-1/2} \cdot Z_k \\ T_n &= \max_{q \leq k \leq n-p} Sum_k \\ g_n &= T_n - Sum_n \end{aligned}$$

The two hypotheses to test are $\begin{cases} H_0 : E_{g_n(\rho_n)} \approx 0 \\ H_1 : E_{g_n(\rho_n)} \succ 0 \end{cases}$ (10)

The utility of this algorithm is shown below on the application to a helicopter simulation data. It indeed permits to kill any premature response, and only responds when the system becomes unstable.

HINGED BLADES HELICOPTER MODEL

We give herein the equations of motion for helicopter's ground resonance and a modal analysis of stability. Further mechanical explanations could be found in [7].

The class of helicopters considered herein is the one with in-plane hinged blades rotors. The model below is known to be a sufficiently precise description for ground resonance studies [1].

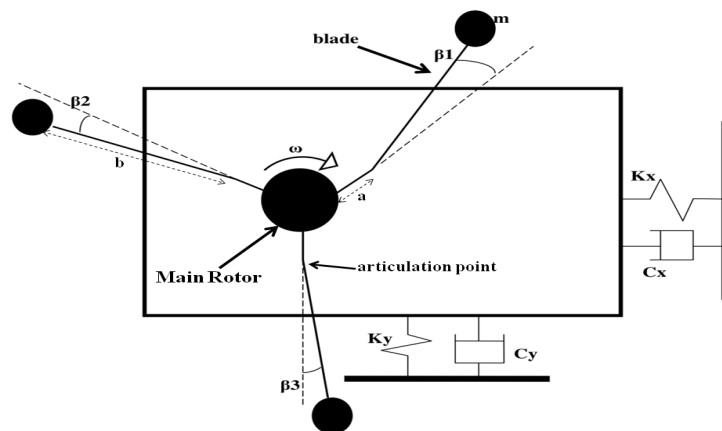


Fig. 1. Helicopter's mechanical model- 3 blades

The helicopter's fuselage is considered to be a rigid body with mass M , attached to a flexible LG (landing gear) which is modeled by two springs K_x and K_y , and two viscous dampers C_x and C_y as

illustrated in Fig. 1. The rotor spinning with a velocity ω , is articulated and the offset between the MR (main rotor) and each articulation is noted a . The blades are modeled by a concentrated mass m at a distance b of the articulation point. Torque stiffness and a viscous damping K_β and C_β are present into each articulation. The moment of inertia around the articulation point is I_z

The degrees of freedom are the lateral displacements of the fuselage x and y , and the out-of-phase angles $\beta_{k=1\dots N_b}$, with N_b the number of blades.

State Vector Model

Applying the theorem of Lagrange to this model, one can demonstrate that [7]:

$$M_r \cdot \begin{bmatrix} \ddot{x} \\ \ddot{y} \\ \text{Rel}(\ddot{\eta}) \\ \text{Im}(\ddot{\eta}) \end{bmatrix} + D_r \cdot \begin{bmatrix} \dot{x} \\ \dot{y} \\ \text{Rel}(\dot{\eta}) \\ \text{Im}(\dot{\eta}) \end{bmatrix} + K_r \cdot \begin{bmatrix} x \\ y \\ \text{Rel}(\eta) \\ \text{Im}(\eta) \end{bmatrix} = 0 \quad (11)$$

Where $z=x+iy$ and η the Coleman [1] coordinate, such that: $\eta = \frac{ib}{N_b} \sum_{k=0}^{N_b-1} \beta_k e^{i(\omega t + \frac{2k\pi}{N_b})}$. The matrices

M_r , D_r and K_r write:

$$M_r = \begin{bmatrix} m + \frac{M}{N_b} & 0 & m & 0 \\ 0 & m + \frac{M}{N_b} & 0 & m \\ m & 0 & m + \frac{I_z}{b^2} & 0 \\ 0 & m & 0 & m + \frac{I_z}{b^2} \end{bmatrix} \quad D_r = \begin{bmatrix} \frac{C_x}{N_b} & 0 & 0 & 0 \\ 0 & \frac{C_y}{N_b} & 0 & 0 \\ 0 & 0 & \frac{C_\beta}{b^2} & 2\omega(m + \frac{I_z}{b^2}) \\ 0 & 0 & -2\omega(m + \frac{I_z}{b^2}) & \frac{C_\beta}{b^2} \end{bmatrix}$$

$$K_r = \begin{bmatrix} \frac{K_x}{N_b} & 0 & 0 & 0 \\ 0 & \frac{K_y}{N_b} & 0 & 0 \\ 0 & 0 & \frac{K_\beta}{b^2} + m\omega^2(\frac{a}{b} - 1 - \frac{I_z}{mb^2}) & \omega \frac{C_\beta}{b^2} \\ 0 & 0 & -\omega \frac{C_\beta}{b^2} & \frac{K_\beta}{b^2} + m\omega^2(\frac{a}{b} - 1 - \frac{I_z}{mb^2}) \end{bmatrix}$$

Let $e = [x^T \quad y^T \quad \text{Rel}(\eta)^T \quad \text{Im}(\eta)^T]^T$ and $X = \begin{bmatrix} e \\ \dot{e} \end{bmatrix}$ be the state vector. The system can be written as a

Linear Parameter-Varying (LPV):

$\dot{X}(t) = A(\omega).X(t)$, and for the equation of observation $Y(t) = C.X(t)$, where:

$$A(\omega) = \begin{bmatrix} 0 & I \\ -M_r^{-1} \cdot K_r & -M_r^{-1} \cdot D_r \end{bmatrix}, \text{ we choose } C = [I \quad 0].$$

Sampling the system at some rate τ yields the equations:

$$\begin{cases} X_{k+1} = F(\omega).X_k + v_{k+1} \\ Y_k = C.X_k + w_k \end{cases}, v \text{ and } w \text{ are Gaussian noises with zero mean, and } F = e^{\tau A} \quad (12)$$

Modal Analysis

The criterion of instability here is the drop of one or more damping ratios ρ_i from positive values to negative ones ($\rho_i < 0$). Given the matrix A , the variation of these coefficients with the angular velocity can be plotted. They are computed using the eigenvalues λ_i of A :

$$\rho_i = \frac{-\text{Re}(\lambda_i)}{\sqrt{\text{Re}(\lambda_i)^2 + \text{Im}(\lambda_i)^2}}$$

The plot is shown in Fig. 2 with the structural properties reported in Table 1.

Table 1. Structural properties for hinged-blades helicopter with 4 blades

Structure variable	Value(unit)
Blade mass	
m	31.9 Kg
Fuselage mass	
M	2902.9 Kg
Blade stiffness	
K_β	200 N/m
Main LG stiffness	
K_x	3200 N/m
K_y	3200 N/m
Blade damping	
C_β	15 N.s./m
Main LG damping	
C_x	300 N.s/m
C_y	300 N.s/m
Lengths	
a	0.2 m
b	2.5 m
Moment of Inertia at articulation point	
I_z	259 Kg/m ²

Fig. 2 illustrates that the damping coefficients become positive and they are varying smoothly with rotor's angular velocity. The second modal damping coefficient ρ_2 (mode 2) changes from positive values to negative ones, from $\omega=1.62$ rad/s to $\omega =2$ rad/s, which is a criterion for ground resonance. It is this damping coefficient which will be monitored by CUSUM test.

A question to ask would be: why using the CUSUM test if we have the interval of instability from the modal analysis of the mechanical model? The answer is that this analysis is based on a

deterministic and off-line method and does not take into consideration randomness and uncertainties that may affect the margins of stability. In [3] it is shown for the flutter phenomenon that airspeeds of instability are highly sensitive to small changes in aircraft structure. Ground resonance is similar to flutter; the use of a statistical approach will then make the detection robust.

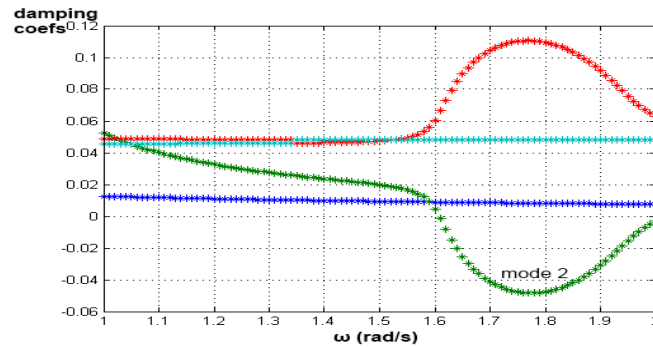


Fig. 2. Damping coefficients vs. blades angular velocity

Simulation Results for CUSUM Test

To test the performances of the sliding approach to the fixed-reference one, the helicopter model above is simulated at a rate $\tau=0.02$ s. The angular velocity varies from $\omega=1$ rad/s (taken as the state of reference) to $\omega=2$ rad/s by a step of 0.01 rad/s. For each value of velocity, 1000 output samples are simulated.

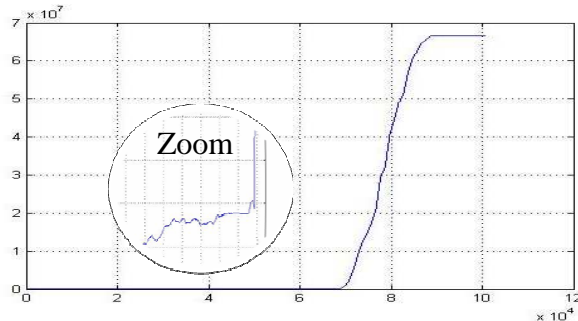


Fig. 3. Fixed reference CUSUM test response vs. sample

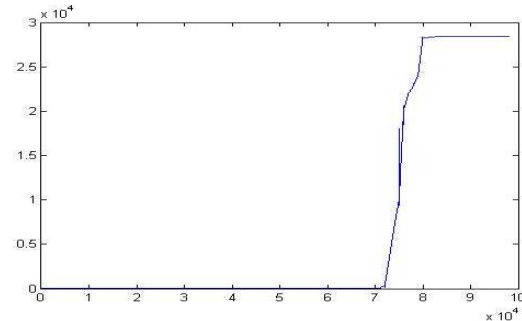


Fig. 4. Sliding reference CUSUM test response vs. sample

The fixed reference test responds for $\omega=1.6$ rad/s, corresponding to the velocity of resonance, but a zoom shows that the response occurs before. This was predictable, the second damping coefficients, as shown in Fig. 2) is continuously dropping; any change on its value engenders a response of the test. The response of the sliding test proves that, indeed, this approach kills any parasite response and the alarm is only triggered on near the instability, and not far from it.

CONCLUSION

The problem of detecting the ground resonance is addressed. An adaptive algorithm is proposed in order to perform the response time and tested with simulation data. Future works encompasses a generalization of these methods to a more complex model for helicopters rotors, which is the model of anisotropic blades that leads to a Linear Periodically Time-Varying system.

ACKNOWLEDGEMENTS

This work was supported by the European project FP7-NMP CPIP 213968-2 IRIS.

REFERENCES

- [1] R. P. Coleman and A. M. Feingold, "Theory of self-excited mechanical oscillations of helicopter rotors with hinged blades," NACA, Technical Report 1958.
- [2] B. Eckert, "Analytical and a numerical ground resonance analysis of a conventionally articulated main rotor helicopter," Stellenbosch University, Thesis 2007.
- [3] H. H. Khodaparast, J. E. Mottershead, and K. J. Badcock, "Propagation of structural uncertainty to linear aeroelastic stability," *Computers and Structures*, vol. 88, pp. 223-236, 2010.
- [4] M. Basseville and I. Nikiforov, *Detection of Abrupt Changes- Theory and Applications*, Information and System Sciences Series ed. Englewood Cliffs, NJ: Prentice Hall, 1993.
- [5] M. Basseville, M. Abdelghani, and A. Benveniste, "Subspace-based fault detection algorithms for vibration monitoring," *Automatica*, vol. 36, pp. 101-109, 2000.
- [6] L. Mevel, M. Basseville, and A. Benveniste, "Fast in-flight detection of flutter onset : A statistical approach," *AIAA Journal of Guidance, Control and Dynamics*, vol. 28, no. 3, pp. 431-438, may 2005.
- [7] A. Jhinaoui, L. Mevel, and J. Morlier, "Ground resonance monitoring for hinged-blades helicopters: statistical CUSUM approach," INRIA, Rennes, FR, 2010.
- [8] P. Van Overschee and B. De Moor, *Subspace Identification for Linear Systems, Theory, Implementation, Applications.*: Kluwer Academic Publishers, 1996.
- [9] A. Benveniste, M. Metivier, and P. Priouret, *Adaptive Algorithms and Stochastic Approximations.*: Springer Verlag, 1990.
- [10] I. Goethals, L. Mevel, A. Benveniste, and Bart De Moor, "Recursive Output Only Subspace Identification for In-flight Flutter Monitoring," in *Proceedings of the 22nd International Modal Analysis Conference (IMACXXII)*, 2004.
- [11] R. Zouari, "An Adaptive Statistical Approach To Flutter Detection," in *IFAC World Congress*, Seoul, 2008, pp. 12024-12029.
- [12] T. Gustafsson, "Instrumental variable subspace tracking using projection approximation," *IEEE Transactions on Signal Processing*, vol. 46, pp. 669--681, 1996.