



HAL
open science

KIM-1 as a blood-based marker for early detection of kidney cancer: a prospective nested case-control study

Ghislaine Scelo, David Muller, Elio Riboli, Mattias Johansson, Amanada Cross, Paolo Vineis, Konstantinos Tsilidis, Paul Brennan, Heiner Boeing, Petra Hm Peters, et al.

► To cite this version:

Ghislaine Scelo, David Muller, Elio Riboli, Mattias Johansson, Amanada Cross, et al.. KIM-1 as a blood-based marker for early detection of kidney cancer: a prospective nested case-control study. *Clinical Cancer Research*, 2018, 24 (22), pp.5594-5601. 10.1158/1078-0432.CCR-18-1496 . hal-01852196

HAL Id: hal-01852196

<https://hal.science/hal-01852196v1>

Submitted on 27 Jan 2024

HAL is a multi-disciplinary open access archive for the deposit and dissemination of scientific research documents, whether they are published or not. The documents may come from teaching and research institutions in France or abroad, or from public or private research centers.

L'archive ouverte pluridisciplinaire **HAL**, est destinée au dépôt et à la diffusion de documents scientifiques de niveau recherche, publiés ou non, émanant des établissements d'enseignement et de recherche français ou étrangers, des laboratoires publics ou privés.



HHS Public Access

Author manuscript

Clin Cancer Res. Author manuscript; available in PMC 2019 May 15.

Published in final edited form as:

Clin Cancer Res. 2018 November 15; 24(22): 5594–5601. doi:10.1158/1078-0432.CCR-18-1496.

KIM-1 as a blood-based marker for early detection of kidney cancer: a prospective nested case-control study.

Ghislaine Scelo^{#1}, David C Muller^{#2}, Elio Riboli², Mattias Johansson¹, Amanda J Cross², Paolo Vineis², Konstantinos K Tsilidis^{2,3}, Paul Brennan¹, Heiner Boeing⁴, Petra HM Peeters⁵, Roel C H Vermeulen⁶, Kim Overvad⁷, H. Bas Bueno-de-Mesquita^{8,9,10,2}, Gianluca Severi^{11,12}, Vittorio Perduca^{11,12,13}, Marina Kvaskoff^{11,12}, Antonia Trichopoulou¹⁴, Carlo La Vecchia^{14,15}, Anna Karakatsani^{14,16}, Domenico Palli¹⁷, Sabina Sieri¹⁸, Salvatore Panico¹⁹, Elisabete Weiderpass^{20,21,22,23}, Torkjel M Sandanger²⁰, Therese H Nøst²⁰, Antonio Agudo²⁴, J. Ramón Quirós²⁵, Miguel Rodríguez-Barranco^{26,27}, Maria-Dolores Chirlaque^{27,28,29}, Timothy J Key³⁰, Prateek Khanna³¹, Joseph V. Bonventre³², Venkata S. Sabbiseti³², and Rupal S. Bhatt³¹

¹International Agency for Research on Cancer (IARC), Lyon, France ²Department of Epidemiology and Biostatistics, Imperial College London, London, United Kingdom ³Department of Hygiene and Epidemiology, University of Ioannina School of Medicine, Ioannina, Greece ⁴Department of Epidemiology, German Institute of Human Nutrition Potsdam-Rehbruecke, Nuthetal, Germany ⁵Julius Center for Health Sciences and Primary Care, University Medical Center Utrecht, The Netherlands ⁶Institute for Risk Assessment Sciences, Utrecht University, The Netherlands ⁷Department of Public Health, Section for Epidemiology, Aarhus University, Denmark ⁸Department for Determinants of Chronic Diseases (DCD), National Institute for Public Health and the Environment (RIVM), Bilthoven, The Netherlands ⁹Department of Gastroenterology and Hepatology, University Medical Centre, Utrecht, The Netherlands. ¹⁰Department of Social & Preventive Medicine, Faculty of Medicine, University of Malaya, Pantai Valley, Kuala Lumpur, Malaysia. ¹¹CESP, Faculté de Médecine - Université Paris-Sud, Faculté de médecine - UVSQ, INSERM, Université Paris-Saclay, Villejuif, France ¹²Gustave Roussy, Villejuif, France ¹³Laboratoire de Mathématiques Appliquées MAP5 (UMR CNRS 8145), Université Paris Descartes, Paris, France ¹⁴Hellenic Health Foundation, Athens, Greece ¹⁵Department of Clinical Sciences and Community Health Università degli Studi di Milano, Milan, Italy ¹⁶2nd Pulmonary Medicine Department, School of Medicine, National and Kapodistrian University of Athens, "ATTIKON" University Hospital, Haidari, Greece ¹⁷Cancer Risk Factors and Life-Style Epidemiology Unit, Cancer Research and Prevention Institute - ISPO, Florence, Italy ¹⁸Epidemiology and Prevention Unit Fondazione IRCCS Istituto Nazionale dei Tumori, Milan, Italy ¹⁹Dipartimento Di Medicina Clinica e Chirurgia, Federico II University, Naples, Italy ²⁰Department of Community Medicine, Faculty of Health Sciences, University of Tromsø, The Arctic University of Norway, Tromsø, Norway. ²¹Department of Research, Cancer Registry of Norway, Institute of

Corresponding authors: Rupal S. Bhatt, Department of Medicine, Division of Hematology and Oncology Beth Israel Deaconess Medical Center, Boston, MA, United States of America. rbhatt@bidmc.harvard.edu; Tel.: +1-617-735-2062, David C Muller, Department of Epidemiology and Biostatistics, Imperial College London, Norfolk Place, London W21PG, United Kingdom. david.muller@imperial.ac.uk; Tel.: +44-20-7594-0856.

Conflict of Interest: The authors declare no conflict of interest.

Population-Based Cancer Research, Oslo, Norway.²²Department of Medical Epidemiology and Biostatistics, Karolinska Institutet, Stockholm, Sweden²³.Genetic Epidemiology Group, Folkhälsan Research Center, Helsinki, Finland²⁴.Unit of Nutrition and Cancer, Cancer Epidemiology Research Program, Institut Català d'Oncologia, L'Hospitalet de Llobregat, Spain²⁵.Public Health Directorate, Asturias, Spain²⁶.Escuela Andaluza de Salud Pública, Instituto de Investigación Biosanitaria ibs.GRANADA. Hospitales Universitarios de Granada/Universidad de Granada, Granada, Spain²⁷.CIBER in Epidemiology and Public Health (CIBERESP), Madrid, Spain²⁸.Department of Epidemiology, Regional Health Council, IMIB-Arrixaca, Murcia, Spain²⁹.Department of Health and Social Sciences, Universidad de Murcia, Murcia, Spain³⁰.Cancer Epidemiology Unit, Nuffield Department of Population Health, University of Oxford³¹.Department of Medicine, Division of Hematology and Oncology, Beth Israel Deaconess Medical Center, Boston, MA, United States of America³².Brigham and Women's Hospital, Harvard Institutes of Medicine, Boston, MA, United States of America

These authors contributed equally to this work.

Abstract

Purpose: Renal cell carcinoma (RCC) has the potential for cure with surgery when diagnosed at an early stage. Kidney injury molecule-1 (KIM-1) has been shown to be elevated in the plasma of RCC patients. We aimed to test whether plasma KIM-1 could represent a means of detecting RCC prior to clinical diagnosis.

Experimental Design: KIM-1 concentrations were measured in pre-diagnostic plasma from 190 RCC cases and 190 controls nested within a population-based prospective cohort study. Cases had entered the cohort up to five years before diagnosis, and controls were matched on cases for date of birth, date at blood donation, sex, and country. We applied conditional logistic regression and flexible parametric survival models to evaluate the association between plasma KIM-1 concentrations and RCC risk and survival.

Results: The incidence rate ratio (IRR) of RCC for a doubling in KIM-1 concentration was 1.71 (95% confidence interval [CI]: 1.44–2.03, p -value = 4.1×10^{-23}), corresponding to an IRR of 63.3 (95% CI: 16.2–246.9) comparing the 80th to the 20th percentile of the KIM-1 distribution in this sample. Compared with a risk model including known risk factors of RCC (age, sex, country, body mass index and tobacco smoking status), a risk model additionally including KIM-1 substantially improved discrimination between cases and controls (area under the receiver operating characteristic curve of 0.8 compared to 0.7). High plasma KIM-1 concentrations were also associated with poorer survival ($p=0.0053$).

Conclusions: Plasma KIM-1 concentrations could predict RCC incidence up to 5 years prior to diagnosis and were associated with poorer survival.

Introduction

Kidney cancer is estimated to cause more than 140,000 deaths each year worldwide, and approximately 330,000 new diagnoses are recorded annually.¹ The large majority (over 80%) are renal cell carcinomas (RCC). Patients diagnosed with localized RCC (stages I and

II) are commonly cured following nephron-sparing nephrectomy as the sole treatment, with limited long-term side effects. Tumors that invade local/regional tissues (stage III) or with distant metastasis (stage IV) have poor prognoses, with five-year survival rates of about 50% and 10%, respectively.² The majority of early stage tumors are asymptomatic and incidentally detected via imaging exams for a range of medical conditions and symptoms. There is currently no recommended screening practice for primary RCC in people who are not known to carry gene variants associated with an increased risk of the disease. With this background, identifying a sensitive and specific tumor marker that can detect early stage RCC would have strong potential to improve the overall survival for RCC. There is currently no known blood-based biomarker that is predictive of future RCC diagnosis.

Kidney injury molecule-1 (KIM-1) is a protein that is normally expressed at very low levels in the kidney and in any other normal tissue, but is upregulated in injured renal tubule cells.^{3,4} The ectodomain of KIM-1 undergoes cleavage and can be detected in urine and blood.^{5,6} It was previously shown in urine⁷⁻⁹ and more recently in plasma [Sabbisetti et al, under review] through case-control studies that concentrations of KIM-1 are drastically elevated at the time of diagnosis in clear cell RCC (ccRCC). Using healthy controls as the reference, Sabbisetti et al. demonstrated that the area under the receiver operating characteristic curve (AUC) afforded by plasma KIM-1 alone was 0.96 (95% confidence interval [CI] 0.93–0.99). In a complementary analysis, they observed a significant decrease in plasma KIM-1 concentrations comparing post- to pre-nephrectomy plasma sample pairs in 13 ccRCC cases. These two observations suggest that KIM-1 plasma concentrations may be a sensitive and specific biomarker for RCC diagnosis, as well as specific to the presence of the tumor (decrease of the concentration after surgical removal of the tumor). However, it is not known whether KIM-1 is detectable prior to RCC diagnosis.

In this study, we aimed to assess whether plasma KIM-1 concentrations measured in blood samples collected up to five years prior to diagnosis were associated with risk of subsequent RCC diagnosis, and to explore the potential of using KIM-1 as an early detection biomarker of RCC in order to improve survival.

Methods

Study sample

We used plasma samples from the European Prospective Investigation into Cancer and nutrition (EPIC). The EPIC study is an ongoing multi-center prospective cohort that recruited 521,330 participants between 1992 and 2000 from 23 centers across 10 countries in Europe, of whom 385,747 donated a blood sample at study recruitment. The current study involved EPIC participants from nine countries (Denmark, France, Germany, Greece, Italy, the Netherlands, Norway, the United Kingdom, and Spain). Details on recruitment procedures, collection of questionnaire and anthropometric data, and blood sample collection and storage have been described in detail elsewhere.¹⁰ The study was conducted in accordance with the Declaration of Helsinki. Ethical review boards of the International Agency for Research on Cancer IARC and all local institutions where participants were recruited gave approval for the study, and all participants gave written informed consent for data collection and storage, as well as individual follow-up

A nested case-control series was defined within the cohort as detailed elsewhere.¹¹ In brief, for each incident RCC case (defined as C64.9, International Statistical Classification of Diseases and Related Health Problems, Tenth Revision (ICD-10)) that was histologically confirmed, one control was randomly chosen from risk sets consisting of all cohort members alive and free of cancer (except non-melanoma skin cancer) at the time of diagnosis of the index RCC cancer case. Matching criteria were: country, sex, date of blood collection (\pm one month, extended to \pm five months for sets without available controls), and date of birth (\pm one year, extended to \pm five years).

For this study, we included every case that had entered the cohort and donated blood up to five years before being diagnosed with RCC. In total, 190 cases (152, 80% ccRCC) and 190 controls were included in the study. Baseline characteristics of the study participants by case-control status are available in Supplementary Table 1.

Biomarker measurement

Plasma concentrations of KIM-1, as well as tumor necrosis factor receptors 1 and 2 (TNFR1 and TNFR2) as markers of chronic inflammation, were measured using a microbead-based assay as described previously.⁵ Samples were diluted ten-fold in sample diluent buffer (0.1M HEPES, 0.1M NaCl, 0.1% Tween-20 and 1% BSA; pH 7.4; filter sterilized), and 30 μ L of diluted sample, recombinant standards and internal control samples were incubated with ~6000 microbeads that were coupled with KIM-1, TNFR1 and TNFR2 capture antibodies for 1 h (R&D Systems). After incubation, microbeads were washed 3X with PBST and incubated with corresponding detection antibodies (R&D Systems) for 45 min. After incubation, beads were washed 3X with PBS-Tween and incubated with Streptavidin-PE (Invitrogen) for 15 min. The signal from the fluorochrome, which is directly proportional to the amount of antigen bound at the microbead surface, was captured using the Bio-Plex system (Bio-Rad). The lower level of detection (LLOD) for KIM-1, TNFR1 and TNFR 2 were 1.02 pg/mL, 0.67 pg/ml, and 0.17 pg/ml, respectively and this value was assigned to all samples where analytes were not detected. As a marker of kidney function, we used creatinine mass spectrometry measurements¹² conducted in the context of previous studies.
11

Statistical analysis

To evaluate the association between KIM-1 concentrations and RCC risk, we calculated odds ratios and 95% confidence intervals (CIs) using conditional logistic regression, conditioning on the matched case-sets. These odds ratios estimate incidence rate ratios (IRRs) given the incidence density matched design of our study. We estimated IRRs for a doubling in KIM-1 concentrations by including a log-2 transformed continuous variable in the logistic regression models. To put the IRRs in context, we contrasted the 80th and 20th percentiles of the KIM-1 concentrations in EPIC, estimated by weighting each observation according to its probability of being included in the nested case-control sample. We evaluated the extent to which the association of KIM-1 with RCC risk was modified by other risk factors, including age at diagnosis (both as a continuous variable and in groups defined prior to analysis, chosen to ensure a sufficient number of cases in each group: <55; \geq 55 and <65; \geq 65), sex, tobacco smoking, hypertension, diabetes, and body mass index (BMI), by

using the likelihood ratio test on interactions fitted between KIM-1 and each covariate. One participant was missing BMI, so models including BMI include 189 cases. Analyses with grouped continuous age at diagnosis yielded substantively similar results, so for convenience of reporting we present results by age groups. Similarly, we assessed potential heterogeneity by histological type (ccRCC or others/missing) and time since blood draw (grouped as less than 2 years versus 2–5 years) by fitting interaction terms between KIM-1 and variables for histological type or time since blood draw. For these analyses by histological type and time-to-diagnosis, matched controls were given the same value of the covariate as their index case to allow estimation of stratum specific estimates and tests of interaction, since histological type and time-to-diagnosis are not defined for participants not diagnosed with RCC. These interaction tests have limited statistical power compared with the test of the main effect, but taken in context of a qualitative assessment of stratum-specific estimates, they provide an indication as to whether there is any substantial heterogeneity of the association by individual level factors. Deviation from log-linear trend was tested by comparing the log-linear model with a 3 degree of freedom restricted cubic spline model using the likelihood ratio test.

The associations between concentrations of KIM-1 with those of TNFR1, TNFR2, and creatinine were assessed by correlation. Additionally, the three measures were added to the risk model with KIM-1 to evaluate whether they affected the KIM-1 risk estimate.

We used flexible parametric survival models to estimate the 5-year absolute risk of RCC as a function of KIM-1 concentration, age, sex, BMI, and smoking status (never, ex-, and current smoker), averaged across country of recruitment. These models were fitted to the nested case-control sample,¹³ with each participant's contribution to the likelihood weighted by the probability that they were selected into the nested case-control sample.¹⁴ The key advantage of flexible parametric survival models is that they use restricted cubic splines to model the baseline cumulative hazard function, and can thus accommodate a variety of different functional forms, which can then be used to directly obtain predicted risks from the fitted model. We used restricted cubic splines with 3 degrees of freedom to model the baseline cumulative hazard of RCC as a function of time since blood draw. The model's ability to discriminate those at high and low risk was assessed using the AUC, and was compared to a base model which included all predictors except for KIM-1 concentration.

We further evaluated whether pre-diagnostic KIM-1 concentrations were associated with the risk of death after RCC diagnosis (overall survival) among the cases by fitting flexible parametric survival models.¹³ These models used restricted cubic splines with 3 degrees of freedom to model the baseline cumulative hazard as a function of time since diagnosis, with these hazards allowed to vary by age at diagnosis. Analyses were conducted with R version 3.4.3¹⁵ and Stata version 12.1 (Stata Corporation, College Station, Texas).

Results

KIM-1 was detected in 177 cases (93%) and 133 controls (70%) (Table 1). In samples with detectable levels of KIM-1, the median concentrations were 149 pg/mL and 59 pg/mL in cases and controls respectively.

The IRR of RCC for a doubling in KIM-1 concentration, conditioning on age, sex, and country, was 1.71 (95% CI: 1.44–2.03; p-value = 4.1×10^{-23}). Further adjusting for BMI and smoking status at baseline did not much change the estimate (IRR = 1.72, 95% CI: 1.44–2.06; p-value = 1.1×10^{-21}). We found no substantial evidence for deviation from the log-linear trend (p-value for test of non-linearity = 0.13, Supplementary Figure 1). In the context of the distribution of KIM-1 concentrations in EPIC, this translates to an IRR of 63.3 (95% CI: 16.2–246.9) when comparing the 80th percentile (199.04 pg/mL) to the 20th percentile (undetected concentration). Figure 1 shows the IRRs for a doubling in KIM-1 concentration by individual characteristics. We found little evidence that the adjusted IRR of 1.72 varied by smoking status, sex, age at baseline, BMI, history of hypertension or diabetes (p-values for heterogeneity above 0.27). The association was strong for both ccRCC and RCC of other or missing subtype, with IRR estimates of 1.82 (95% CI: 1.47–2.26) and 1.48 (95% CI: 1.11–1.98), respectively. The association of KIM-1 with risk was similar for cases diagnosed within two years after blood draw (IRR=1.82 [95% CI: 1.38–2.50]) and cases diagnosed between 2 to 5 years after blood draw (IRR=1.63 [95% CI: 1.30–2.05]; p-value for heterogeneity = 0.49). In the absence of complete information on stage for the RCC cases, we conducted a sensitivity analysis in which 72 cases who did not survive at least 5 years after their diagnosis were excluded, along with their matched controls. Considering only the remaining 118 cases with good prognosis, KIM-1 was still strongly associated with risk (IRR = 1.61, 95% CI: 1.31–1.98, p-value = 4.5×10^{-11}). Plasma concentrations of creatinine and TNF receptors were not found to be strongly correlated with KIM-1 concentrations (Supplementary Figure 3). Their addition to the model also did not much affect the association between KIM-1 concentration and RCC risk (IRR = 1.74, 95% CI: 1.45–2.08).

Predicted probabilities of being diagnosed with RCC in the 5 years are plotted against KIM-1 plasma concentrations in Figure 2, based on the weighted full model that included age, sex, country, BMI and tobacco smoking status in addition to KIM-1. As compared to a base model that included these predictors (AUC = 0.71, 95% CI: 0.65–0.77), adding KIM-1 concentration in the model significantly improved the discrimination (AUC = 0.80, 95% CI: 0.75–0.85); Wald test of KIM-1 coefficient p-value = 5.3×10^{-6} , p-value for difference in AUC=0.002) (Figure 2). Adding KIM-1 to the model approximately doubled the sensitivity as compared to the base model: for a specificity of 75%, the sensitivity increased from 42% to 76%, and for a specificity of 95%, the sensitivity increased from 21% to 54%. Absolute risk of an RCC diagnosis as a function of follow-up time is plotted in Figure 3, for different ages at blood draw and example KIM-1 concentrations. Based on the estimated baseline incidence rate averaged across the EPIC participating countries, and for male current smokers with a BMI of 30 kg/m² as an example, the 5-year risk of RCC was below 0.2% for those with KIM-1 of 50 pg/mL, regardless of age at blood draw. A KIM-1 concentration of 800 pg/mL, in contrast, implied a 5-year risk of 1.0% (95% CI 0.4–2.4) for those with blood drawn at age 60 years, and 1.4% (95% CI 0.5–3.8) for those aged 70 years at blood draw.

During a median follow-up of 7.8 years after diagnosis, 88 of the 190 RCC cases had died (65 of whom had RCC being reported as the sole originating cause of death). The median survival time among those who died was one year. We found evidence of a non-linear association between KIM-1 concentration and risk of death among RCC cases (p-value for test of non-linearity = 0.07) and used flexible non-linear (3 degrees of freedom) models to

estimate hazard ratios (HRs) and 95% CIs (Figure 4, panel A). Using these models and 50 pg/mL for the reference KIM-1 concentration, we estimated HRs of death for all causes at 1.45 (95% CI: 1.12–1.86) for 100 pg/mL, 2.38 (95% CI: 1.32–4.27) for 200 pg/mL, 3.17 (95% CI: 1.51–6.65) for 400 pg/mL, and 3.29 (95% CI: 1.61–6.74) for 800 pg/mL (overall p-value: 0.0053). Figure 4, panel B, depicts the overall survival probabilities after RCC diagnosis for three values of KIM-1 concentration and by age at diagnosis. For an individual diagnosed with RCC between the ages of 55 and 65 years, the 5 year survival probability was 0.74 given a KIM-1 concentration of 50 pg/mL, and 0.65 or below given a concentration of 200pg/mL or greater.

Discussion

This study demonstrated that plasma KIM-1 concentrations are strongly associated with the risk of being diagnosed with RCC in the following 5 years. We estimated that a concentration of about 200 pg/mL (80th percentile of plasma KIM-1 distribution in our sample) conferred a 63-fold higher risk when compared to undetectable plasma KIM-1 concentrations in the EPIC cohort. We also showed that pre-diagnostic elevated plasma KIM-1 concentrations were associated with higher risk of death in RCC cases.

This study was motivated by previous studies in which we showed that plasma KIM-1 was elevated in RCC patients at the time of diagnosis, and that KIM-1 concentrations dropped after nephrectomy. [Sabbisetti et al, under review] These findings led to the hypothesis that plasma KIM-1 is a biomarker that could predict the development of RCC. To our knowledge, this is the first time that KIM-1 has been assessed in pre-diagnostic samples.

The EPIC study is a large population-based prospective cohort study, wherein blood samples and questionnaire information were collected from participants at study entry who were subsequently followed for cancer outcome. This is an ideal setting to evaluate the association between plasma KIM-1 and RCC risk, i.e., for testing whether elevated plasma KIM-1 concentrations can be detected in participants from a general, non-clinical population prior to any cancer diagnosis. The principal limitation of our study is the lack of complete information on tumor stage, but we could circumvent this limitation to some degree by conducting analyses limited to cases with good prognosis who were likely to have been diagnosed at an early stage.

We found that plasma KIM-1 concentration substantially improved the discrimination between participants who were diagnosed with RCC within 5 years versus those were not, with an AUC of 0.80 as compared to 0.71 when only known RCC risk factors were included in the models. The improvement was particularly apparent in the higher range of specificity (Figure 2B). An AUC of 0.80 is higher than the AUCs observed for any of the nine multivariable prediction models being evaluated in the context of lung cancer screening eligibility, which are in turn greater than established models for other cancers such as the Gail breast cancer risk prediction model.¹⁶ Further, we observed that a model including KIM-1 could achieve a sensitivity of 0.42 for a given specificity of 0.95, indicating that it may be substantially more sensitive for RCC detection than prostate specific antigen (PSA) is for prostate cancer.¹⁷ As an example, we estimated the risk of being diagnosed with RCC

during the following 5 years for a 70 year-old smoking man with KIM-1 concentrations of 800 pg/mL and BMI 30 kg/m² was 1.4% when averaging the baseline risk across EPIC participating countries. It reached 2.5% in Germany, where the highest incidence rates are found across EPIC participating countries.¹⁸ Thus, despite excellent discrimination, KIM-1 in combination with established risk factors is unlikely to be useful for early detection of RCC in a general population setting. We envisage that KIM-1 will be useful in settings where the risk of RCC is higher, such as patients undergoing abdominal CT scanning, where KIM-1 could be used to stratify risk of RCC. This will be particularly important given the rise of routine CT scans, and the strong association between number of CT scans and number of nephrectomies performed at the regional level in the US, indicating a substantial burden of overdiagnosis.¹⁹

This study focused on the first five years of follow-up, assuming that the potential utility of KIM-1 as a predictor of RCC would diminish as the time between blood draw and diagnosis increases. One unexpected finding was that the increase in risk associated with elevated KIM-1 concentrations did not vary with time: the risk was similarly high in cases diagnosed within 2 years of their plasma collection and in those diagnosed between 2–5 years after collection. This could potentially be explained by a large proportion of advanced stage tumors at diagnosis, which were not clinically manifest at the time of blood draw. However, our analysis indicates that KIM-1 concentrations remain strongly associated with risk of RCC even when considering only those cases who survived for more than five years after their diagnosis. The fact that this association exists among those with good prognosis suggests that KIM-1 might be useful in predicting early stage disease, for which definitive curative treatment is successful.²⁰

That KIM-1 concentrations are elevated in RCC cases at least up to five years before diagnosis, including cases with good prognosis (presumably diagnosed with early stage tumors), also indicates that the natural history of the disease may extend well beyond five years. The window for early detection would then cover a substantial period of time. More research is also needed to fully understand the natural history of RCC and to estimate the prevalence of indolent tumors that are unlikely to progress, and for which detection and treatment would be unnecessary. Future research is necessary to investigate how long before RCC diagnosis KIM-1 is elevated, as well as whether KIM-1 becomes elevated prior to the initial neoplastic transformations in the kidney.

Most RCCs remain asymptomatic until an advanced stage, and many are diagnosed incidentally during routine imaging for unrelated examinations. Biomarkers of disease or risk could enable the identification of subsets of the population for whom screening for RCC via radiological imaging may be feasible and effective. Aside from KIM-1, markers of chronic inflammation and hypoxia such as IL6, CAIX and serum amyloid have also been described.^{21–25} We have also shown that vitamin B6 tends to be higher in patients with lower risk of RCC.¹¹ More recently, circulating micro RNAs have been shown to be elevated in RCC.^{26,27} Any biomarker or set of biomarkers will be most informative if they are not associated with risk or presence of other cancers, but to date, KIM-1 has not been evaluated in relation to risk of other cancers.

One possible caveat for the use of KIM-1 for detection of RCC is that it is also present in the setting of kidney injury which would potentially constitute false positives if KIM-1 was to be used as screening tool. However, most patients who have an incidental diagnosis of localized RCC present with normal renal function, differentiating them from other renal diseases. Moreover, we studied creatinine levels as well as markers of systemic inflammation (TNF receptors), and inclusion of these factors did not affect the strong association between KIM-1 concentrations and risk of RCC.

In summary, we demonstrated that plasma KIM-1 is a promising candidate biomarker for RCC early detection, owing to its strong performance in predicting RCC in a general population cohort. Whilst predicted probabilities of RCC based on KIM-1 are likely to be too small to indicate its use in a general population setting, in a clinical setting KIM-1 has the potential to increase the proportion of cases diagnosed with localized, curable disease.

Supplementary Material

Refer to Web version on PubMed Central for supplementary material.

Acknowledgements

The authors thank all participants in the EPIC cohort for their invaluable contribution to the study.

RSB was funded by NIH R01 CA196996 and NIH P50 CA101942–12.

DCM was funded by a Cancer Research UK Population Research Fellowship.

The coordination of EPIC is financially supported by the European Commission (DG-SANCO) and the International Agency for Research on Cancer. The national cohorts are supported by Danish Cancer Society (Denmark); Ligue Contre le Cancer, Institut Gustave Roussy, Mutuelle Générale de l'Éducation Nationale, Institut National de la Santé et de la Recherche Médicale (Inserm), (France); Deutsche Krebshilfe, Deutsches Krebsforschungszentrum and Federal Ministry of Education and Research (Germany); the Hellenic Health Foundation (Greece); Associazione Italiana per la Ricerca sul Cancro-AIRC-Italy and National Research Council (Italy); Dutch Ministry of Public Health, Welfare, and Sports (VWS), Netherlands Cancer Registry (NKR), LK Research Funds, Dutch Prevention Funds, Dutch ZON (Zorg Onderzoek Nederland), World Cancer Research Fund (WCRF), Statistics Netherlands (the Netherlands); Health Research Fund (FIS), PI13/00061 to Granada, Regional Governments of Andalucía, Asturias, Basque Country, Murcia (no. 6236) and Navarra, ISCIII RETIC (RD06/0020; Spain); Swedish Cancer Society, Swedish Scientific Council and County Councils of Skåne and Västerbotten (Sweden); Cancer Research UK (14136 to EPIC-Norfolk; C570/A16491 and C8221/A19170 to EPIC-Oxford), Medical Research Council (1000143 to EPIC-Norfolk, MR/M012190/1 to EPIC-Oxford United Kingdom).

References

1. GLOBOCAN 2012 website. (Accessed May 28, 2017, at <http://globocan.iarc.fr/>)
2. Scelo G, Brennan P. The epidemiology of bladder and kidney cancer. *Nat Clin Pract Urol* 2007;4:205–17. [PubMed: 17415353]
3. Han WK, Bailly V, Abichandani R, Thadhani R, Bonventre JV. Kidney Injury Molecule-1 (KIM-1): a novel biomarker for human renal proximal tubule injury. *Kidney Int* 2002;62:237–44. [PubMed: 12081583]
4. Ichimura T, Bonventre JV, Bailly V, et al. Kidney injury molecule-1 (KIM-1), a putative epithelial cell adhesion molecule containing a novel immunoglobulin domain, is up-regulated in renal cells after injury. *J Biol Chem* 1998;273:4135–42. [PubMed: 9461608]
5. Sabbiseti VS, Waikar SS, Antoine DJ, et al. Blood kidney injury molecule-1 is a biomarker of acute and chronic kidney injury and predicts progression to ESRD in type I diabetes. *J Am Soc Nephrol* 2014;25:2177–86. [PubMed: 24904085]

6. Vaidya VS, Waikar SS, Ferguson MA, et al. Urinary biomarkers for sensitive and specific detection of acute kidney injury in humans. *Clin Transl Sci* 2008;1:200–8. [PubMed: 19212447]
7. Zhang PL, Mashni JW, Sabbisetti VS, et al. Urine kidney injury molecule-1: a potential non-invasive biomarker for patients with renal cell carcinoma. *Int Urol Nephrol* 2014;46:379–88. [PubMed: 23979814]
8. Morrissey JJ, London AN, Lambert MC, Kharasch ED. Sensitivity and specificity of urinary neutrophil gelatinase-associated lipocalin and kidney injury molecule-1 for the diagnosis of renal cell carcinoma. *Am J Nephrol* 2011;34:391–8. [PubMed: 21912102]
9. Mijuskovic M, Stanojevic I, Milovic N, et al. Tissue and urinary KIM-1 relate to tumor characteristics in patients with clear renal cell carcinoma. *Int Urol Nephrol* 2017; In press.
10. Riboli E, Hunt KJ, Slimani N, et al. European Prospective Investigation into Cancer and Nutrition (EPIC): study populations and data collection. *Public Health Nutr* 2002;5:1113–24. [PubMed: 12639222]
11. Johansson M, Fanidi A, Muller DC, et al. Circulating biomarkers of one-carbon metabolism in relation to renal cell carcinoma incidence and survival. *J Natl Cancer Inst* 2014;106:dju327. [PubMed: 25376861]
12. Middtun O, Kvalheim G, Ueland PM. High-throughput, low-volume, multianalyte quantification of plasma metabolites related to one-carbon metabolism using HPLC-MS/MS. *Anal Bioanal Chem* 2013;405:2009–17. [PubMed: 23232958]
13. Royston P, Parmar MK. Flexible parametric proportional-hazards and proportional-odds models for censored survival data, with application to prognostic modelling and estimation of treatment effects. *Stat Med* 2002;21:2175–97. [PubMed: 12210632]
14. Samuelsen SO. A pseudo likelihood approach to analysis of nested case-control studies. *Biometrika* 1997;84:379–94.
15. R Core Team. R: A language and environment for statistical computing. R Foundation for Statistical Computing, Vienna, Austria, 2017 URL <https://www.R-project.org/>.
16. Ten Haaf K, Jeon J, Tammemagi MC, et al. Risk prediction models for selection of lung cancer screening candidates: A retrospective validation study. *PLoS Med* 2017;14:e1002277. [PubMed: 28376113]
17. Holmstrom B, Johansson M, Bergh A, Stenman UH, Hallmans G, Stattin P. Prostate specific antigen for early detection of prostate cancer: longitudinal study. *BMJ* 2009;339:b3537. [PubMed: 19778969]
18. Li P, Znaor A, Holcatova I, et al. Regional geographic variations in kidney cancer incidence rates in European countries. *Eur Urol* 2015;67:1134–41. [PubMed: 25465966]
19. Welch HG, Skinner JS, Schroek FR, Zhou W, Black WC. Regional variation of computed tomographic imaging in the United States and the risk of nephrectomy. *JAMA Intern Med* 2017; In press.
20. Van Poppel H, Da Pozzo L, Albrecht W, et al. A prospective, randomised EORTC intergroup phase 3 study comparing the oncologic outcome of elective nephron-sparing surgery and radical nephrectomy for low-stage renal cell carcinoma. *Eur Urol* 2011;59:543–52. [PubMed: 21186077]
21. Fischer K, Theil G, Hoda R, Fornara P. Serum amyloid A: a biomarker for renal cancer. *Anticancer Res* 2012;32:1801–4. [PubMed: 22593464]
22. Chamie K, Klopfer P, Bevan P, et al. Carbonic anhydrase-IX score is a novel biomarker that predicts recurrence and survival for high-risk, nonmetastatic renal cell carcinoma: Data from the phase III ARISER clinical trial. *Urol Oncol* 2015;33:204 e25–33.
23. Sim SH, Messenger MP, Gregory WM, et al. Prognostic utility of pre-operative circulating osteopontin, carbonic anhydrase IX and CRP in renal cell carcinoma. *Br J Cancer* 2012;107:1131–7. [PubMed: 22918393]
24. Fu Q, Chang Y, An H, et al. Prognostic value of interleukin-6 and interleukin-6 receptor in organ-confined clear-cell renal cell carcinoma: a 5-year conditional cancer-specific survival analysis. *Br J Cancer* 2015;113:1581–9. [PubMed: 26554658]
25. Zurita AJ, Gagnon RC, Liu Y, et al. Integrating cytokines and angiogenic factors and tumour bulk with selected clinical criteria improves determination of prognosis in advanced renal cell carcinoma. *Br J Cancer* 2017;117:478–84. [PubMed: 28683470]

26. Zhang W, Ni M, Su Y, et al. MicroRNAs in serum exosomes as potential biomarkers in clear-cell renal cell carcinoma. *Eur Urol Focus* 2016; In press.
27. Petrozza V, Pastore AL, Palleschi G, et al. Secreted miR-210-3p as non-invasive biomarker in clear cell renal cell carcinoma. *Oncotarget* 2017;8:69551–8. [PubMed: 29050224]

Author Manuscript

Author Manuscript

Author Manuscript

Author Manuscript

Translational Relevance

Incidence of renal cell carcinoma (RCC) is rising, and although patients diagnosed with localized RCC (stages I and II) are commonly cured following nephron-sparing nephrectomy as the sole treatment, tumors that invade local tissues (stage III) or with distant metastasis (stage IV) have poor prognoses, with five-year relative survival rates of about 50% and 10%, respectively. Identifying a sensitive and specific tumor marker that can detect early stage RCC would have strong potential to improve the overall survival for RCC. There is currently no known blood-based biomarker that is predictive of future RCC diagnosis. We show that plasma concentrations of Kidney Injury Molecule 1 (KIM-1) can predict incidence of RCC up to 5 years prior to diagnosis in a population-based cohort, and that pre-diagnostic KIM-1 is strongly predictive even among cases with good prognosis. Thus, KIM-1 has the potential to increase the proportion of cases diagnosed with localized, curable disease.

Author Manuscript

Author Manuscript

Author Manuscript

Author Manuscript

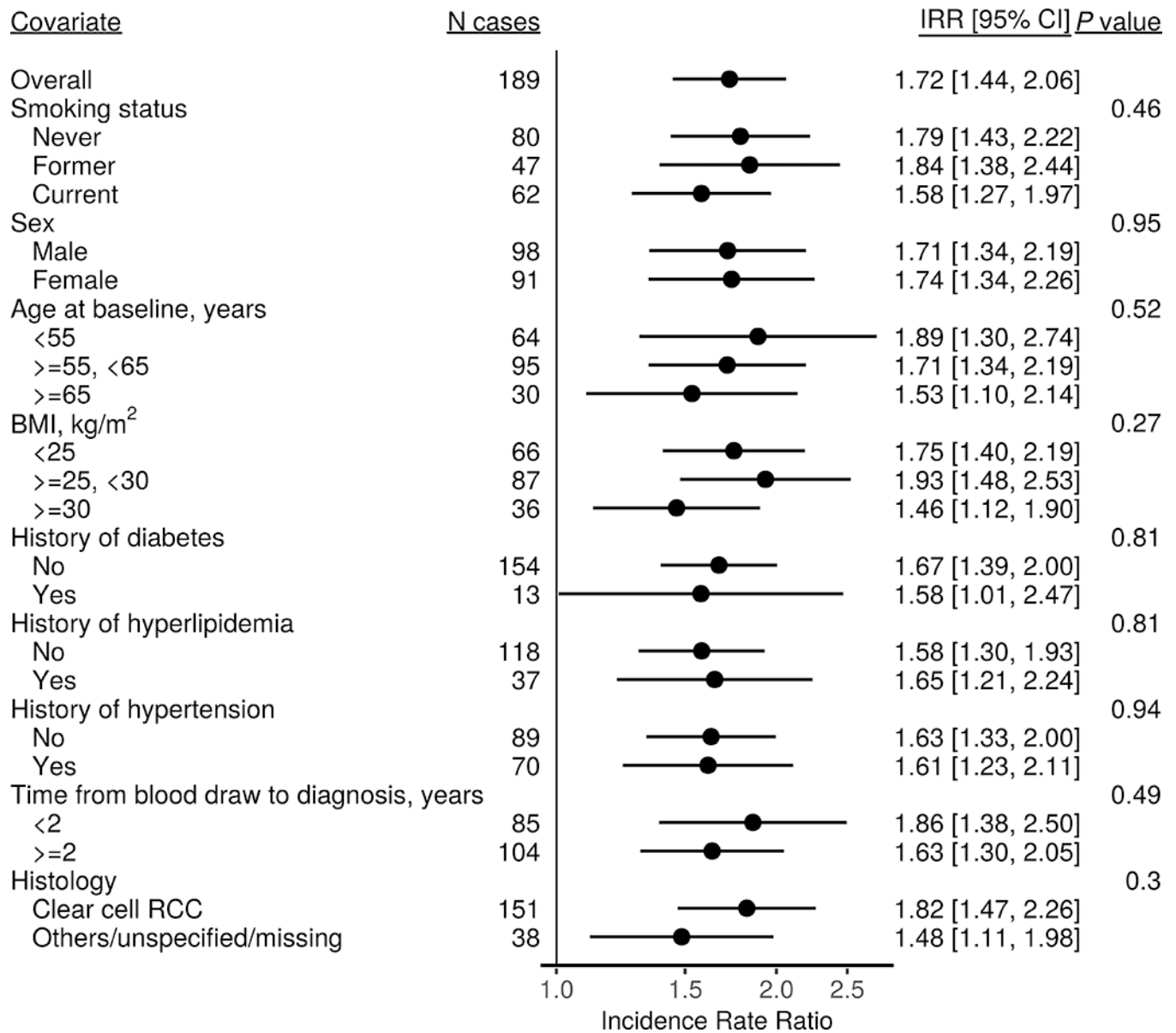


Figure 1. RCC Incidence Rate Ratios for a doubling in KIM-1 concentration, overall and by individual characteristics.

Rate ratios were estimated using conditional logistic regression models fitted to the matched case-control sets (matching criteria: date at blood draw, date of birth, sex, country) and were further adjusted for body mass index and smoking status. The rate of RCC incidence was increased with higher concentrations of KIM-1. This association did not vary by individual characteristics or time between blood draw and RCC diagnosis. The P-values are from likelihood ratio tests of the interaction terms, which test the null hypothesis of no differences among levels of the risk factors.

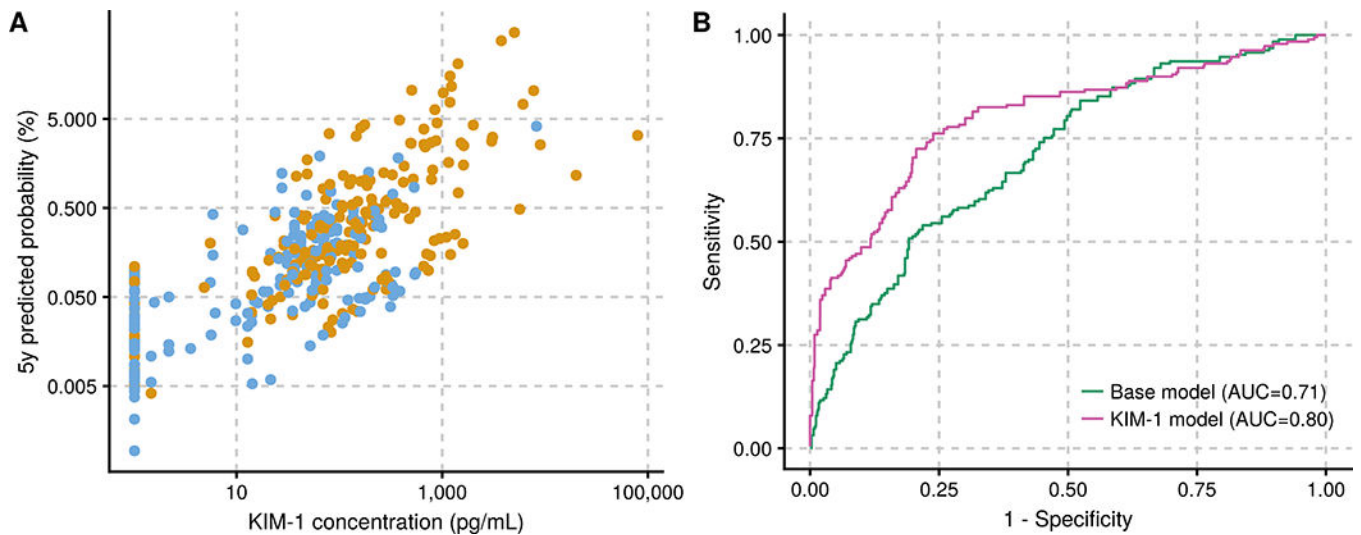


Figure 2.

A: Predicted probabilities of being diagnosed of RCC in the 5 years by KIM-1 plasma concentrations. Cases are represented by orange dots and controls by blue dots. **B: ROC curves depicting the ability of KIM-1 to improve the discrimination between cases and controls.** Base model includes age, sex, country, BMI and tobacco smoking status. Plasma KIM-1 concentrations are capable of improving the discrimination between those who go on to be diagnosed with RCC within 5 years and those who do not.

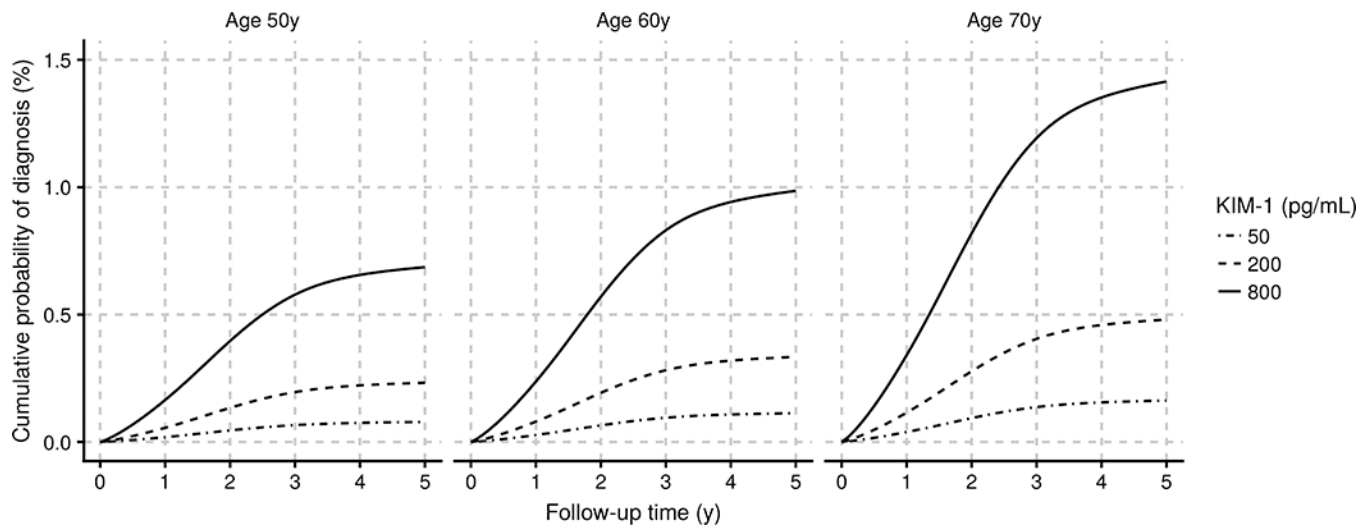


Figure 3. Absolute risk of an RCC diagnosis as a function of follow-up time, for given ages and KIM-1 concentrations.

Estimates are conditional on being male current smoker with a BMI of 30 kg/m², and the estimated baseline incidence rate of RCC averaging across EPIC participating countries. Absolute risk of RCC is substantially higher for those with high KIM-1 concentrations compared to those with lower concentrations.

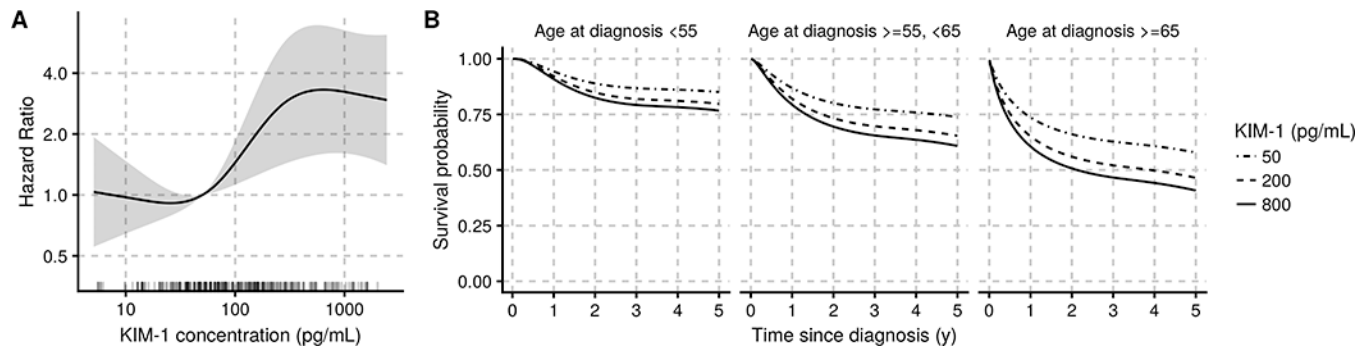


Figure 4. A: Estimated hazard ratios and 95% confidence intervals for risk of death among RCC cases from flexible non-linear (3 degrees of freedom) models. **B:** Estimated conditional survival functions by age at diagnosis and KIM-1 concentrations.

KIM-1 was modeled using a 3 degree of freedom restricted cubic spline. The baseline hazard was separately modeled for each age group with a 3 degree of freedom restricted cubic spline. The rate of death increased with higher pre-diagnostic concentrations of KIM-1: death rates were over three-fold higher for RCC cases with KIM-1 concentrations greater than 400 pg/mL compared with those whose concentrations were at or below 50 pg/mL.

Table 1.

Distribution of plasma KIM-1 concentrations (pg/mL) by case-control status, and by histological subtypes of RCC.

Statistics	Controls (n=190)	RCC cases overall (n=190)	Clear cell RCC cases (n=152)
N _{detected} (%)	133 (70.0)	177 (93.2)	141 (92.8)
Median *	59	149	149
5 th percentile *	4	15	21
95 th percentile *	351	3,090	3,090
Range *	1.48–8,253	1.48–79,472	1.48–79,472

* Among detected samples. Lower limit of detection (LLOD): 1.02 pg/mL.

Author Manuscript

Author Manuscript

Author Manuscript

Author Manuscript