



**HAL**  
open science

## **Microbial and plant-derived compounds both contribute to persistent soil organic carbon in temperate soils**

Pierre Barre, Katell Quénéa, Alix Vidal, Lauric Cécillon, Bent T. Christensen, Thomas Kätterer, Andy Macdonald, Léo Petit, Alain F. Plante, Folkert van Oort, et al.

### ► To cite this version:

Pierre Barre, Katell Quénéa, Alix Vidal, Lauric Cécillon, Bent T. Christensen, et al.. Microbial and plant-derived compounds both contribute to persistent soil organic carbon in temperate soils. *Biogeochemistry*, 2018, 140 (1), pp.81-92. <10.1007/s10533-018-0475-5>. <hal-01852142>

**HAL Id: hal-01852142**

**<https://hal.science/hal-01852142v1>**

Submitted on 5 Feb 2024

HAL is a multi-disciplinary open access archive for the deposit and dissemination of scientific research documents, whether they are published or not. The documents may come from teaching and research institutions in France or abroad, or from public or private research centers.

L'archive ouverte pluridisciplinaire HAL, est destinée au dépôt et à la diffusion de documents scientifiques de niveau recherche, publiés ou non, émanant des établissements d'enseignement et de recherche français ou étrangers, des laboratoires publics ou privés.



Distributed under a Creative Commons CC BY 4.0 - Attribution - International License

1 **Microbial and plant-derived compounds both contribute to persistent soil organic**  
2 **carbon in temperate soils**

3

4 Pierre Barré<sup>1</sup>, Katell Quénéa<sup>2</sup>, Alix Vidal<sup>3</sup>, Lauric Cécillon<sup>4</sup>, Bent T. Christensen<sup>5</sup>, Thomas  
5 Kätterer<sup>6</sup>, Andy Macdonald<sup>7</sup>, Léo Petit<sup>2</sup>, Alain F. Plante<sup>8</sup>, Folkert van Oort<sup>9</sup>, Claire Chenu<sup>9</sup>

6

7 **Affiliations:**

8 <sup>1</sup>Laboratoire de Géologie de l'ENS - PSL Research University – CNRS UMR8538, 75005 Paris,  
9 France

10 <sup>2</sup>Sorbonne Universités, UPMC Univ Paris 06, CNRS, EPHE, UMR 7619 Metis, 4, place  
11 Jussieu, 75252 Paris cedex 05

12 <sup>3</sup>Lehrstuhl für Bodenkunde, TU München, Emil-Ramann-Strasse 2, 85356 Freising, Germany

13 <sup>4</sup>Université Grenoble Alpes, Irstea, UR EMGR, 2 rue de la Papeterie-BP 76, F-38402 St-  
14 Martin-d'Hères, France

15 <sup>5</sup>Department of Agroecology, Aarhus University, AU-Foulum, DK-8830 Tjele, Denmark

16 <sup>6</sup>Department of Ecology, Swedish University of Agricultural Sciences, 75007 Uppsala, Sweden

17 <sup>7</sup>Department of Sustainable Agriculture Sciences, Rothamsted Research, Harpenden,  
18 Hertfordshire, UK

19 <sup>8</sup>Earth and Environmental Science, University of Pennsylvania, Philadelphia, USA

20 <sup>9</sup>AgroParisTech - INRA, UMR 1402 ECOSYS, 78850 Thiverval Grignon, France

21

22 \*Correspondence to: Pierre Barré, e-mail:[barre@geologie.ens.fr](mailto:barre@geologie.ens.fr), phone: +33 1 44 32 22 94

23

24

25

26 **Abstract**

27 Our study tests the emerging paradigm that biochemical recalcitrance does not affect  
28 substantially long-term (50 years) SOC persistence. We analyzed the molecular composition of  
29 SOC in archived soils originating from four European long-term bare fallow experiments  
30 (Askov, Rothamsted, Versailles and Ultuna). The soils had been collected after various periods  
31 (up to 53 years) under bare fallow. With increasing duration of bare fallow without new organic  
32 inputs, the relative abundance of cutin- and suberin-derived compounds declined substantially,  
33 and the abundance of lignin-derived compounds was close to zero. Conversely, the relative  
34 abundance of plant-derived long-chain alkanes remained almost constant or increased during  
35 the bare fallow period. The relative abundance of N-containing compounds, considered to be  
36 abundant in SOC derived from microbial activity, increased consistently illustrating that  
37 microbial turnover of SOC continues even when plant inputs are stopped. The persistence of  
38 the different families of plant-derived compounds differed markedly over the scale of half a  
39 century, which may be ascribed to their contrasting chemical characteristics and recalcitrance,  
40 or to differences in their interactions with the soil mineral matrix, and likely some combination  
41 since chemical composition drives the degree of mineral association. Using soil from this  
42 unique set of long-term bare fallow experiments, we provide direct evidence that multi-decadal  
43 scale persistent SOC is enriched in microbe-derived compounds but also includes a substantial  
44 fraction of plant-derived compounds.

45

46

47

48 **Keywords:** TMAH-Py-GC-MS, long-term bare fallow, plant-derived compounds, soil

49 organic carbon persistence

50

## 51 **Introduction**

52 In spite of their importance for soil quality and climate regulation, the mechanisms responsible  
53 for long-term storage of soil organic carbon (SOC) remain insufficiently understood  
54 (Stockmann et al. 2013). Emerging paradigms suggest that the persistence of SOC is less  
55 defined by its chemical composition and recalcitrance than previously conceived (Schmidt et  
56 al. 2011; Lehmann and Kleber, 2015). It is envisioned that the chemical composition of organic  
57 inputs influence short-term C dynamics whereas the long-term persistence of SOC is defined  
58 mainly by its interactions with the mineral matrix and environmental constraints. Evidence  
59 supporting the reduced role of inherent biochemical recalcitrance as the primary mechanism for  
60 SOC persistence is derived from studies showing shorter residence times of specific compounds  
61 presumed to be recalcitrant compared to bulk SOC (*e.g.* Amelung et al. 2008; Schmidt et al.  
62 2011), and the predominance of SOC of microbial rather than plant origin. Specifically, plant-  
63 derived compounds such as lignin show much shorter residence times than previously  
64 anticipated (*e.g.* Dignac et al. 2005; Amelung et al., 2008; Hofmann et al. 2009), and recent  
65 molecular level characterization suggest that microbial metabolites and necromass are  
66 important constituents of the most persistent fractions of SOC (Miltner et al. 2012; Kallenbach  
67 et al. 2016). Although biochemical recalcitrance may not play a primary and direct role in SOC  
68 stabilization, the molecular composition of SOC remains an essential feature that plays  
69 important indirect roles in its long-term persistence in soil. For example, it has been  
70 demonstrated that diverse soil minerals provide selective chemical affinities and induce  
71 chemical fractionation of SOC through differential sorption processes (*e.g.* Sollins et al. 2009;  
72 Mitchell et al. 2013; Coward et al. 2018).

73         Nonetheless, the link between SOC persistence and molecular composition remains  
74 obscured partly because of lack of analytical procedures that allow persistent SOC to be  
75 physically separated from labile SOC. One obvious way to assure that only persistent SOC is

76 present in a soil is to cease C inputs and allow the more decomposable compounds to  
77 decompose. Long-term bare fallow experiments (LTBF) provide such conditions. LTBF  
78 experiments consist of soil plots that have been kept free of organic inputs and vegetation for  
79 decades by manual or chemical means. New C inputs to the soils have therefore been negligible  
80 during the fallow period, and the SOC remaining has consequently persisted for at least the  
81 duration of the fallow period. With regular sampling and archiving of soils, LTBF experiments  
82 now provide a unique research platform for studies of the characteristics of SOC that has  
83 persisted in soils for decades (Barré et al. 2010; 2016). It is noteworthy that the persistence over  
84 decades of a C atom in the LTBF soils does not necessarily imply that the organic molecule  
85 containing this C atom also has persisted for decades. Soil microbial activity in LTBF plots  
86 may transfer a C atom, initially present in a plant-derived molecule, into a microbe-derived  
87 molecule during the bare fallow period. Consequently, while our experimental set-up allows  
88 for studies on the persistence of C entering the soil before the fallow period, it does not reflect  
89 the persistence of pre-fallow organic matter.

90 This study examines changes in the molecular composition of SOC after decades of *in-*  
91 *situ* decomposition without new organic inputs. We hypothesize that the molecular composition  
92 of SOC is dominated by plant residues in the early phase of LTBF (~10-30 years), whereas  
93 plant-derived compounds contribute insignificantly to SOC that persists for half a century, and  
94 that this persistent SOC is dominated by SOC of microbial origin. We tested the hypotheses by  
95 analyzing the molecular composition of soils collected after different periods under bare fallow  
96 from four experiments located at Askov (Denmark), Rothamsted (United Kingdom), Ultuna  
97 (Sweden) and Versailles (France). The soils were analyzed using pyrolysis gas-chromatography  
98 mass-spectrometry after tetramethylammonium hydroxide derivatization (TMAH-Py-GC-MS).  
99 Molecular characterization of SOC using Py-GC-MS is a well-established method that allows  
100 identification of plant-derived compounds such as lignin, cutin, suberin and long-chain aliphatic

101 compounds and compounds of microbial origin such as short-chain or ramified alkanes  
102 (Derenne & Quenea 2015). Results obtained by Py-GC-MS have been used to compare soils  
103 from different biomes (*e.g.* Carr et al. 2013), and soils under contrasting land-use (*e.g.*  
104 Schellekens et al. 2013; Oliveira et al. 2016) or land management practices (Buurman &  
105 Roscoe 2011).

106

## 107 **Materials and Methods**

### 108 Study sites and soil samples

109 The LTBF experiments were initiated at different times at four sites across NW Europe: (1)  
110 INRA “42 parcels” experiment initiated in 1928 and located in the grounds of the Château de  
111 Versailles in Versailles, France; (2) the long-term bare fallow initiated in 1959 and located  
112 adjacent to the Ley-Arable experiment at Rothamsted Research, Harpenden, United Kingdom;  
113 (3) the Ultuna long-term field experiment initiated in 1956 and located at the Swedish  
114 University of Agricultural Sciences, Uppsala, Sweden; and (4) the Lermarken long-term bare  
115 fallow initiated in 1956 and located at Askov Experimental Station, Denmark (Table 1). More  
116 details on the LTBF sites are available in Barré et al. (2010) and references cited therein.  
117 Surface (up to 25 cm deep) soil samples collected just before and periodically during the bare  
118 fallow period were ground and sieved at 2 mm, air-dried and archived in the dark at ambient  
119 temperatures. In total, 26 samples were included in the study: eight from each of Rothamsted  
120 and Versailles (4 dates × 2 plots), four from Ultuna (4 dates × 1 plot) and six from Askov (3  
121 dates × 2 plots). Sampling dates of samples included in the study are mentioned in Table 1. For  
122 the Versailles LTBF experiment, only soils sampled until 1980 (up to 51 years of bare fallow)  
123 were included in this study because molecular analyses of soils sampled after 1980 yielded  
124 compound abundances that were too low for quantification due to low SOC contents (6-8 mg  
125 C g<sup>-1</sup> soil).

126

127

## 128 TMAH-Py-GC-MS TMAH analysis

129 All samples were subjected to Curie point pyrolysis in the presence of TMAH. Samples (5–10  
130 mg, depending on OC content) were impregnated with a few drops of TMAH in 25% MeOH  
131 (1/1, w/w) prior to loading into ferromagnetic tubes. Samples were pyrolysed at a Curie  
132 temperature of 650 °C for 10 s using a pyrolysis unit (Pilodist), coupled to a gas chromatograph  
133 (GC, Trace Ultra Thermo electron) and a mass spectrometer (MS, DSQ 1 Thermo). After 10  
134 min at 50 °C, the GC oven temperature gradually increased from 50 °C to 310 °C at 2°C min<sup>-1</sup>.  
135 For the sake of clarity, the carbon number of the parent compound is reported for aliphatic  
136 products since TMAH induces *in situ* methylation. Semi-quantitative information was derived  
137 from TMAH-Py-GC-MS using the Agilent ChemStation software by manually subtracting the  
138 background signal from the total ion current (TIC) of each peak of interest, and integrating each  
139 peak area. The relative abundance of each compound was calculated by dividing its peak area  
140 by the sum of all of the areas of identified pyrolysis products. Compounds corresponding to  
141 each peak were identified by MS using the NIST compound library and published data. Only  
142 results for elution times greater than 30 minutes were used because of strong co-elution and  
143 artefacts due to TMAH elution before 30 minutes. Consequently, only part of SOC (generally  
144 50-60%) is recovered as pyrolysis effluents and characterized by Py-GC-MS (Haddix et al.  
145 2016). Identified pyrolysis products or groups of products, and their probable origins (*i.e.*,  
146 plants, microbes or ubiquitous) are reported in Table 2 with key references.

147

## 148 Statistical analyses

149 A principal component analysis (PCA) was performed to assess similarities and differences in  
150 molecular composition among the 26 soil samples (*i.e.*, all sites, years of LTBF duration, and

151 plots) based on the 18 selected mean-centered and variance-scaled Py-GC-MS TIC relative  
152 abundances using the multivariate analysis R package Factoextra (<http://www.sthda.com>).  
153 Trends in the relative abundance of each identified compound were investigated using least-  
154 squares linear regression analysis with bare fallow duration as the independent variable using  
155 the lm R statistical package.

156

## 157 **Results and Discussion**

158 Molecular characteristics of soils at the start of bare fallow

159 The thermo-chemolysates of samples collected at the start of the bare fallow periods (Figure 1)  
160 are consistent with the products commonly identified in Py-GC-MS using similar acquisition  
161 parameters (Vidal et al. 2016). At all sites, aromatic compounds are mainly represented by  
162 lignin derived compounds and to a lesser extent by phenolic compounds. Aliphatic compounds  
163 comprise *n*-alkanoic acids,  $\omega$ -hydroxyalkanoic acids, *n*-alkanedioic acids, *n*-alkanes, *n*-  
164 alkanols, 8,16 - 9,16 and 10, 16 or 18 dihydroxyhexadecanoic acids (DiOH) and 9,10,18  
165 trihydroxyoctadecanoic acid (TriOH). Carbohydrates and N-containing compounds were also  
166 observed.

167 The molecular composition of SOC varies substantially among experimental sites  
168 (Figure 2a) as evidenced by the lack of clustering of the year-zero samples in PC space, and  
169 conversely the clustering of samples by site and separation of sites in PC space. Differences in  
170 the molecular composition among sites are illustrated by separation along PC 1 in the scores  
171 plot (Figure 2a), where soil from Versailles and Ultuna are relatively similar but differ from  
172 those from Rothamsted and Askov. These differences between sites are maintained over the  
173 duration of the LTBF experiments, suggesting that variability in molecular composition among  
174 sites may be greater than changes over time. The relative abundance of  $\omega$ -hydroxyalkanoic  
175 acids was greater at Rothamsted and Askov compared to Versailles and Ultuna (Figure 2,

176 Supplementary Table 1). Long chain  $\omega$ -hydroxyalkanoic acids (C<sub>22</sub> and C<sub>24</sub>) are recognized as  
177 suberin-derived compounds, *i.e.* a typical biopolymer mainly present in plant roots  
178 (Kolattukudy 1980; Nierop 2001; Kögel-Knabner et al. 2002). Compared to other sites, Askov  
179 also shows greater relative abundances of DiOH, TriOH, and long chain *n*-alkanols. These  
180 compounds are typical plant-derived compounds, with TriOH and DiOH being commonly  
181 identified as cutin monomer-derived compounds (Riederer et al. 1993; Del Rio and Hatcher  
182 1998; Otto and Simpson 2006). As such, Askov and to some extent also Rothamsted exhibit  
183 greater plant contributions compared to Versailles and Ultuna which in turn have greater  
184 abundances of N-containing compounds (especially Versailles) than Askov and Rothamsted.  
185 The greater proportion of N-containing compounds suggests a higher contribution of microbial  
186 products to SOM (Grandy & Neff 2007; Vancampenhout et al. 2009). The observed N-  
187 containing compounds are dominated by pyrrole and pyridine which are usually associated with  
188 microbial material whereas N-containing compounds from plant origin (for instance  
189 diketodipyrrole or diketopiperazines) were not observed. The different contribution of N-  
190 containing compounds may also be related to the different abundance of legumes in the  
191 vegetation before bare fallow implementation. However, information on plant community  
192 compositions before bare fallow implementation is not available. The addition of N fertilizers  
193 does not seem to play an important role for the relative content of N-containing compounds as  
194 a higher contribution of N-containing compounds was not observed at Askov where fertilizers  
195 were added throughout the bare fallow.

196 A number of edaphic factors may explain the observed differences among sites in  
197 molecular composition, including climate (temperature, precipitation), management history,  
198 pre-fallow vegetation and productivity, and soil properties such as texture, mineralogy and pH.  
199 The SOC associated with fine mineral fractions has been ascribed to microbial origin (Nierop  
200 et al. 2005; Grandy & Neff 2008), partly because of the affinity of reactive mineral surfaces for

201 N-containing functional groups. The long agricultural history and sandy texture at Askov  
202 compared to the three other sites (Table 1), may explain why compounds usually associated  
203 with fine fractions (*i.e.*, microbe-derived N-containing compounds) are recovered in smaller  
204 relative proportions at Askov. Conversely, high proportions of fine particles in Versailles and  
205 Ultuna soils may explain the greater proportions of microbial products. Despite the high  
206 proportion of fine particles in soils at Rothamsted, results indicate a large plant-derived  
207 contribution. Before being converted to fallow, the Rothamsted site had a long history of  
208 permanent grassland and probably a greater accumulation of plant inputs than the other sites,  
209 as reflected by the larger initial soil C contents (Table 1). The larger pre-fallow plant inputs at  
210 Rothamsted might explain the greater relative proportion of plant-derived compounds in the  
211 fallowed soil.

212

213 Evolution of SOC molecular composition during the bare fallow period

214 The degree to which samples from the same site cluster in PCA scores reflects the degree to  
215 which SOC molecular composition changed relative to other sites. Tight clustering of samples  
216 from the same site but different bare fallow durations would indicate less change in chemical  
217 composition compared to more scattered samples (Figure 2a). As such, changes in SOC  
218 composition appears to be greatest at Rothamsted, followed by Versailles, Ultuna, and Askov.  
219 PCA loadings (Figure 2b) indicate that most plant-derived compounds ( $\omega$ -hydroxyalkanoic  
220 acids, long chain *n*-alkanedioic acids, dihydroxyhexadecanoic acids, trihydroxyoctadecanoic  
221 acid and long chain *n*-alkanoic acids) contribute negatively to PC 1 whereas microbial-derived  
222 compounds (FAMicro) have a positive contribution to PC 1. N-containing compounds are  
223 considered to be mainly of microbial origin and have a positive contribution to PC 1, whereas  
224 ubiquitous compounds considered to be mostly derived from plants such as short chain diacids  
225 (C<sub>8</sub>, C<sub>9</sub>) contribute negatively to PC 1. The changes in SOC molecular composition with time

226 under bare fallow for samples from Versailles and Ultuna are illustrated by PCA trends toward  
227 more positive PC 1 and more negative PC 2 scores (*i.e.*, towards the bottom-right quadrant;  
228 Figure 2a). For samples from Rothamsted, only the trend towards more negative PC2 scores is  
229 observed. Lack of divergence in PC scores for samples within sites during the first 25 years of  
230 bare fallow suggests that changes in the chemical composition of SOM were limited for all sites  
231 except Rothamsted. This site showed the greatest loss of SOC during the first 25 years (from  
232 30 mg C g<sup>-1</sup> soil to 15 mg C g<sup>-1</sup> soil). Conversely, no temporal evolution is observed in PCA  
233 scores for Askov samples.

234 Temporal trends in the relative abundances of pyrolysis products were compound  
235 specific (Figures 2a and 3; supplementary Table 1). Lignin-derived compounds decreased with  
236 bare fallow duration at all sites, though the trend is not statistically significant for Askov (Figure  
237 3; supplementary Table 1). Lignin-derived compounds are not observed after 50 years of bare  
238 fallow at Versailles, Ultuna and Rothamsted, suggesting that the downward trend might have  
239 been more pronounced at Askov after a longer period of bare fallow. These results are consistent  
240 with previous results showing a low persistence of lignin compounds in soils (Dignac et al.  
241 2005; Kelleher et al. 2006; Hofmann et al. 2009). Cutin- and suberin-derived compounds  
242 ( $\omega$ OH, diacids long chain, TriOH and DiOH) contributed similarly to the PCA axis (Figure 2b).  
243 As for lignin-derived compounds, the sum of cutin- and suberin-derived compounds during the  
244 bare fallow period showed that their relative contributions decreased with duration of bare  
245 fallow, except at Askov with the shortest bare-fallow period (Figure 3; Supplementary Table  
246 1). The decrease in cutin+suberin derived compounds is statistically significant for Rothamsted  
247 and Versailles, but not for Ultuna (Supplementary Table 2), likely because of the smaller  
248 number of samples retrieved at this site. A rapid decay of cutin- and suberin-derived compounds  
249 (water repellent wax-like substances from the cuticle) has previously been reported (Armas-  
250 Herrera et al. 2016). Conversely, the relative abundance of long chain alkanes, also of plant

251 origin, showed no trends with bare fallow duration, with the exception of Versailles where a  
252 statistically significant increase was observed. However, the significance of this trend relies on  
253 the last sampling date (Figure 3; Supplementary Table 2). The different slopes of the regressions  
254 models for the various groups of plant-derived compounds (Supplementary Table 2) suggest  
255 that alkanes have a greater persistence than cutin and suberin, which in turn are more persistent  
256 than lignin. Thus, the chemistry of these plant-derived compounds affects their persistence in  
257 soil for at least 50 years.

258         The relative abundance of N-containing compounds tended to increase with bare fallow  
259 duration at all sites except Askov (Figure 3), the increases being statistically significant for  
260 Rothamsted and Versailles (Supplementary Table 2). This is consistent with Carr et al. (2013),  
261 who observed a relative decrease in lignin-derived compounds and a relative increase in N-  
262 containing compounds in soils with degraded SOM retrieved from arid and semi-arid regions  
263 in South Africa. For all other compounds, the trends with duration of bare fallow were minor,  
264 not statistically significant or not consistent across sites (supplementary Table 2).

265

#### 266 Plant and microbial contributions to persistent SOC

267 Differences in the relative abundance of plant-derived, microbial-derived, and N-containing  
268 compounds between the start of the bare fallow period and the last sampling varied by  
269 compound group and site (Figure 4). Except at Askov, the relative abundances of plant-derived  
270 compounds decreased and microbial products and N-containing compounds increased after  
271 decades of bare fallow. This illustrates that the microbial turnover of SOC continues even when  
272 plant inputs are stopped and may promote an ongoing relative increase of microbial products in  
273 the bare fallow soils compared to plant-derived compounds. However, compounds of plant  
274 origin are still recovered in substantial quantities after 50 years without new organic inputs. At  
275 Rothamsted plant-derived compounds represent about 50% of relative peak areas while they

276 accounted for 25% at Versailles and Ultuna at the last sampling. The presence of plant-derived  
277 compounds after 50 years of bare fallow substantiates the influence of initial plant chemistry  
278 on the resulting SOC composition. Contrary to our hypothesis, this demonstrates that persistent  
279 SOC is not composed exclusively of compounds derived from microbial activity but that plant-  
280 derived compounds contribute to SOC even after several decades of degradation. Our findings  
281 contribute to the current debate on the composition of persistent SOC and the importance of  
282 substrate quality for the chemical composition of SOC that is formed during consecutive cycles  
283 of microbial turnover (Kallenbach et al. 2016; Liang et al. 2017). Thus, biochemical  
284 characteristics remain a mechanism to consider for long-term (>50 years) persistence of SOC.  
285 Chemically complex plant components undergo substantial alteration during microbial  
286 decomposition, and decomposition products, as well as compounds originating from the  
287 microbial population, are retained in organo-mineral associations (Christensen 2001). Indeed,  
288 previous studies demonstrated negligible amounts of non-mineral associated particulate OM  
289 (Balabane & Plante 2004).

290 Wickings et al. (2012) proposed three hypotheses to describe changes in the chemical  
291 composition of litter during decomposition: (1) the chemical convergence hypothesis (“all  
292 litters will converge eventually towards a common chemistry”); (2) the initial litter quality  
293 hypothesis (“the initial litter quality has persistent effects on litter chemical composition”); (3)  
294 the decomposer control hypothesis (“changes of litter chemistry during decomposition do not  
295 simply reflect the effects of time or initial litter quality, but are also strongly influenced by the  
296 functional attributes of distinct decomposer communities”). Our dataset allows for testing these  
297 hypotheses of organic matter decomposition in soil. Previous results from spectroscopic  
298 analyses (MIRS and NEXAFS) of LTBF soils failed to provide clear evidence of chemical  
299 trends and convergence in SOC composition over time (Barré et al. 2016). Conversely, the Py-  
300 GC-MS data reported here demonstrate that, despite contrasting initial molecular

301 characteristics, SOC in soils subject to more than 25 years of bare fallow had similar chemical  
302 trajectories during degradation. The trajectory was characterized by a decrease in lignin-, cutin-  
303 and suberin-derived compounds and a relative increase in N-containing compounds and alkanes  
304 (Figure 3). However, initial differences in SOC composition among the sites were reflected  
305 even after 50 years of decomposition, and these differences among sites appear to be greater  
306 than the changes undergone during long-term decomposition. The degradation of SOC may  
307 therefore be explained by a combination of the chemical convergence and the initial chemical  
308 quality hypotheses proposed by Wickings et al. (2012). Our focus on the evolution of the  
309 chemical and molecular composition of SOC during decomposition under long-term bare  
310 fallow does not address the structure of the decomposer communities. Consequently, the  
311 decomposer control hypothesis cannot be ruled out.

312

### 313 **Acknowledgements**

314 The INSU EC2CO program is acknowledged for financial support (CARACAS project). We  
315 thank Rothamsted Research and the Lawes Agricultural Trust for access to archived samples  
316 and the BBSRC for support under the Institute National Capabilities program grant. Related  
317 information and data can be found in the electronic Rothamsted Archive ([era.rothamsted.ac.uk](http://era.rothamsted.ac.uk)).  
318 The Danish contribution was financially supported by The Ministry of Environment and Food.  
319 The Swedish contribution was supported by the Faculty of Natural Resources and Agriculture  
320 at the Swedish University of Agricultural Sciences. We thank the two reviewers for their  
321 constructive comments on the manuscript.

322

323

324 **References**

- 325 Amelung W, Brodowski S, Sandhage-Hofmann A, Bol R (2008) Combining biomarker with  
326 stable isotope analysis for assessing the transformation and turnover of soil organic  
327 matter. *Advances in Agronomy*, 100: 155-250
- 328 Armas-Herrera CM, Dignac MF, Rumpel C, Arbelo CD, Chabbi A (2016) Management effects  
329 on composition and dynamics of cutin and suberin in topsoil under agricultural use. *Eur.*  
330 *J. Soil Sci.*, 67: 360-373
- 331 Balabane, M, Plante, AF (2004) Aggregation and carbon storage in silty soil using physical  
332 fractionation techniques. *Eur. J. Soil Sci.*, 55: 415-427.
- 333 Barré P, Plante AF, Cécillon L, Lutfalla S, Baudin F, Bernard S, Christensen BT, Eglin T,  
334 Fernandez JM, Houot S, Kätterer T, Le Guillou C, Macdonald A, van Oort F, Chenu C  
335 (2016) The energetic and chemical signatures of persistent soil organic matter.  
336 *Biogeochem.*, 130: 1-12
- 337 Barré P, Eglin T, Christensen BT, Ciais P, Houot S, Kätterer T, van Oort F, Peylin P, Poulton,  
338 PR, Romanenkov V, Chenu C (2010) Quantifying and isolating stable soil organic  
339 carbon using long-term bare fallow experiments. *Biogeosciences*, 7: 3839-3850
- 340 Buurman P, Roscoe R (2011) Different chemical composition of free light, occluded light and  
341 extractable SOM fractions in soils of Cerrado and tilled and untilled fields, Minas  
342 Gerais, Brazil: a pyrolysis–GC/MS study. *Eur. J. Soil Sc.*, 62: 253–266
- 343 Carr AS, Boom A, Chase BM, Meadows ME, Roberts ZE, Britton MN, Cumming AM (2013)  
344 Biome-scale characterization and differentiation of semi-arid and arid zone soil organic  
345 matter compositions using pyrolysis–GC/MS analysis. *Geoderma*, 200: 189–201
- 346 Chefetz B, Chen Y, Clapp CE, Hatcher PG (2000) Characterization of organic matter in soils  
347 by thermochemolysis using tetramethylammonium hydroxide (TMAH). *Soil Sci. Soc.*  
348 *Am. J.*, 64: 283–289

349 Christensen BT (2001) Physical fractionation of soil and structural and functional complexity  
350 in organic matter turnover. *Eur. J. Soil Sci.*, 52: 345-353

351 Clifford DJ, Carson DM, McKinney DE, Bortiatynski JM, Hatcher PG (1995) A new rapid  
352 technique for the characterization of lignin in vascular plants: thermochemolysis with  
353 tetramethylammonium hydroxide (TMAH). *Organic Geochem.*, 23: 169–175

354 Coward EK, Ohno T, Plante AF (2018) Adsorption and molecular fractionation of dissolved  
355 organic matter on iron-bearing mineral matrices of varying crystallinity. *Environ. Sci.*  
356 *Technol.* 52(3): 1036-1044

357 Del Río JC, Hatcher PG (1998) Analysis of aliphatic biopolymers using thermochemolysis with  
358 tetramethylammonium hydroxide (TMAH) and gas chromatography–mass  
359 spectrometry. *Organic Geochem.*, 29: 1441–1451

360 Derenne S, Quenea K (2015) Analytical pyrolysis as a tool to probe soil organic matter. *J. Anal.*  
361 *Appl. Pyrolysis*, 111 : 108–120

362 Dignac M-F, Bahri H, Rumpel C, Rasse DP, Bardoux G, Balesdent J, Girardin C, Chenu C,  
363 Mariotti A (2005) <sup>13</sup>C natural abundance as a tool to study the dynamics of lignin  
364 monomers in soil: an appraisal at the Closeaux experimental field (France). *Geoderma*,  
365 128: 3–17

366 Fabbri D, Helleur R (1999) Characterization of the tetramethylammonium hydroxide  
367 thermochemolysis products of carbohydrates. *J. Anal. Appl. Pyrolysis*, 49: 277–293

368 González-Vila FJ, Del Rio JC, Martin F, Verdejo T (1996) Pyrolytic alkylation-gas  
369 chromatography-mass spectrometry of model polymers further insights into the  
370 mechanism and scope of the technique. *Journal of Chromatography*, 750: 155–160.

371 Grandy SG, Neff JC (2008) Molecular C dynamics downstream: The biochemical  
372 decomposition sequence and its impact on soil organic matter structure and function.  
373 *Sci. Tot. Env.*, 404: 297-307

374 Grasset L, Amblès A (1998) Aliphatic lipids released from a soil humin after enzymatic  
375 degradation of cellulose. *Organic Geochem.* 29: 893-897

376 Haddix ML, Magrini-Bair K, Evans RJ, Conant RT, Wallenstein MD, Morris SJ, Calderon F,  
377 Paul EA (2016) Progressing towards more quantitative analytical pyrolysis of soil  
378 organic matter using molecular beam mass spectroscopy of whole soils and added  
379 standards. *Geoderma*, 283: 88-100

380 Han J, Calvin M (1969) Hydrocarbon distribution of algae and bacteria, and microbiological  
381 activity in sediments. *Proc. Natl. Acad. Sci. USA*, 64: 436-443

382 Hofmann A, Heim A, Christensen BT, Miltner A, Gehre M, Schmidt MWI (2009) Lignin  
383 dynamics in two <sup>13</sup>C-labelled arable soils during 18 years. *Eur. J. Soil Sci.*, 60: 250-  
384 257.

385 Kallenbach CM, Frey SD, Grandy SG (2016) Direct evidence for microbial-derived soil organic  
386 matter formation and its ecophysiological controls. *Nature Comm.*, 7, 13630

387 Kelleher BP, Simpson MJ, Simpson AJ (2006) Assessing the fate and transformation of plant  
388 residues in the terrestrial environment using HR-MAS NMR spectroscopy. *Geochim.*  
389 *Cosmochim. Acta*, 70: 4080–4094

390 Kögel-Knabner I (2002) The macromolecular organic composition of plant and microbial  
391 residues as inputs to soil organic matter. *Soil Biol. Biochem.*, 34:139–162

392 Kolattukudy PE (1980) Biopolyester membranes of plants: cutin and suberin. *Science*, 208:  
393 990–1000

394 Lehmann J, Kleber M (2015) The contentious nature of soil organic matter. *Nature*, 528: 60–  
395 68

396 Liang C, Schimel JP, Jastrow JD (2017) The importance of anabolism in microbial control over  
397 soil carbon storage. *Nature Microbiol.*, 2, 17105.

398 Miltner A, Bombach P, Schmidt-Brücken B, Kästner M (2012) SOM genesis: microbial  
399 biomass as a significant source. *Biogeochem.*, 111: 41-55

400 Mitchell PJ, Simpson AJ, Soong R, Oren A, Chefetz B, Simpson MJ (2013) Solution-state  
401 NMR investigation of the sorptive fractionation of dissolved organic matter by alkaline  
402 mineral soils. *Env. Chem.*, 10: 333-340

403 Nierop KG (2001) Temporal and vertical organic matter differentiation along a vegetation  
404 succession as revealed by pyrolysis and thermally assisted hydrolysis and methylation.  
405 *J. Anal. Appl. Pyrolysis*, 61: 111–132

406 Oliveira, DMS, Schellenkens J, Cerri CEP (2016) Molecular characterization of soil organic  
407 matter from native vegetation-pasture-sugarcane transitions in Brazil. *Sci. Tot. Env.*,  
408 548-549: 450-462

409 Otto A, Shunthirasingham C, Simpson MJ (2005) A comparison of plant and microbial  
410 biomarkers in grassland soils from the Prairie Ecozone of Canada. *Organic Geochem.*,  
411 36: 425–448

412 Otto A, Simpson MJ (2006) Sources and composition of hydrolysable aliphatic lipids and  
413 phenols in soils from western Canada. *Organic Geochem.*, 37: 385–407

414 Quéneá K, Largeau C, Derenne S, Spaccini R, Bardoux G, Mariotti A (2006) Molecular and  
415 isotopic study of lipids in particle size fractions of a sandy cultivated soil (Cestas  
416 cultivation sequence, southwest France): sources, degradation, and comparison with  
417 Cestas forest soil. *Organic Geochem.*, 37: 20–44

418 Quéneá K, Mathieu J, Derenne S (2012) Soil lipids from accelerated solvent extraction:  
419 influence of temperature and solvent on extract composition. *Organic Geochem.*, 44:  
420 45–52

421 Riederer M, Matzke K, Ziegler F, Kögel-Knabner I (1993) Occurrence, distribution and fate of  
422 the lipid plant biopolymers cutin and suberin in temperate forest soils. *Organic*  
423 *Geochem.*, 20: 1063–1076

424 Rieley G, Collier RJ, Jones DM, Eglinton G, Eakin PA, Fallick AE (1991) Sources of  
425 sedimentary lipids deduced from stable carbon-isotope analyses of individual  
426 compounds. *Nature*, 352(6334), 425.

427 Schellekens J, Barberá GG, Buurman P, Pérez-Jordà G, Martínez-Cortizas A (2013) Soil  
428 organic matter dynamics in Mediterranean A-horizons — the use of analytical pyrolysis  
429 to ascertain land-use history. *J. Anal. Appl. Pyrolysis*, 104: 287–298

430 Schmidt MWI, Torn MS, Abiven S, Dittmar T, Guggenberger G, Janssens IA, Kleber M,  
431 Kögel-Knabner I, Lehmann J, Manning DAC, Nannipieri P, Rasse DP, Weiner S,  
432 Trumbore SE (2011) Persistence of soil organic matter. *Nature*, 478: 49-56

433 Sollins P, Kramer MG, Swanston C, Lajtha K, Filley T, Aufdenkampe AK, Wagai R, Bowden  
434 RD (2009) Sequential density fractionation across soils of contrasted mineralogy:  
435 evidence for both microbial- and mineral-controlled soil organic matter stabilization.  
436 *Biogeochem.*, 96: 209-231

437 Stockmann U, Adams MA, Crawford JW, Field DJ, et al. (2013) The knowns, known  
438 unknowns and unknowns of sequestration of soil organic carbon. *Agriculture*  
439 *Ecosystems & Environment*, 164: 80-99

440 Vancampenhout K, Wouters K, De Vos B, Buurman P, Swennen R, Deckers J  
441 (2009) Differences in chemical composition of soil organic matter in natural ecosystems  
442 from different climatic regions – a pyrolysis-GC/MS study. *Soil Biol. Biochem.*, 41:  
443 568-579

444 Vidal A, Quenea K, Alexis M, Derenne S (2016) Molecular fate of root and shoot litter on  
445 incorporation and decomposition in earthworm casts. *Organic Geochem.*, 101: 1-10

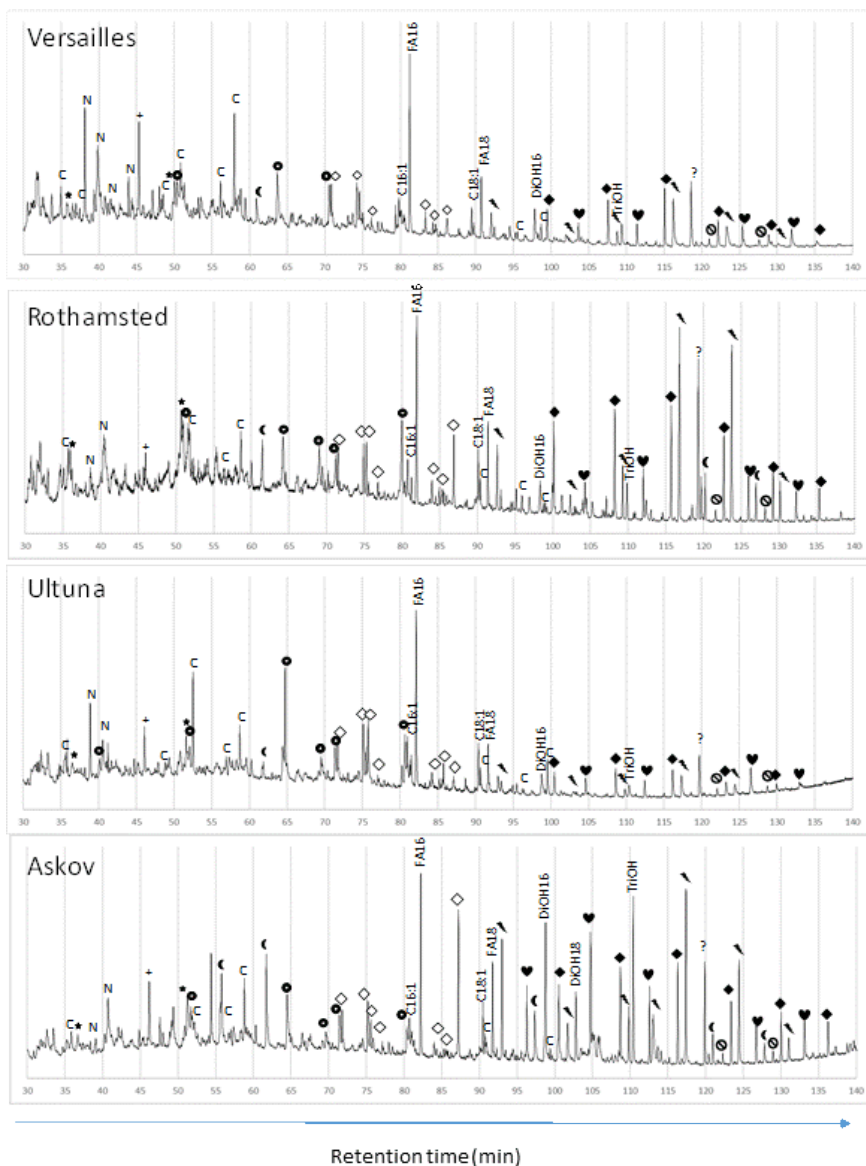
446 Wickings K, Grandy SG, Reed SC, Cleveland CC (2012) The origin of litter chemical  
447 complexity during decomposition. *Ecol. Let.*, 15: 1180-1188

448 Wannigama GP, Volkman JK, Gillan FT, Nichols PD, Johns RB (1981) A comparison of lipid  
449 components of the fresh and dead leaves and pneumatophores of the mangrove  
450 *Avicennia marina*. *Phytochemistry*, 20: 659–666

451 Wiesenberg GLB, Gocke M, Kuzyakov Y (2010) Fast incorporation of root-derived lipids and  
452 fatty acids into soil – evidence from a short term multiple pulse labelling experiment.  
453 *Organic Geochem.*, 41: 1049–1055

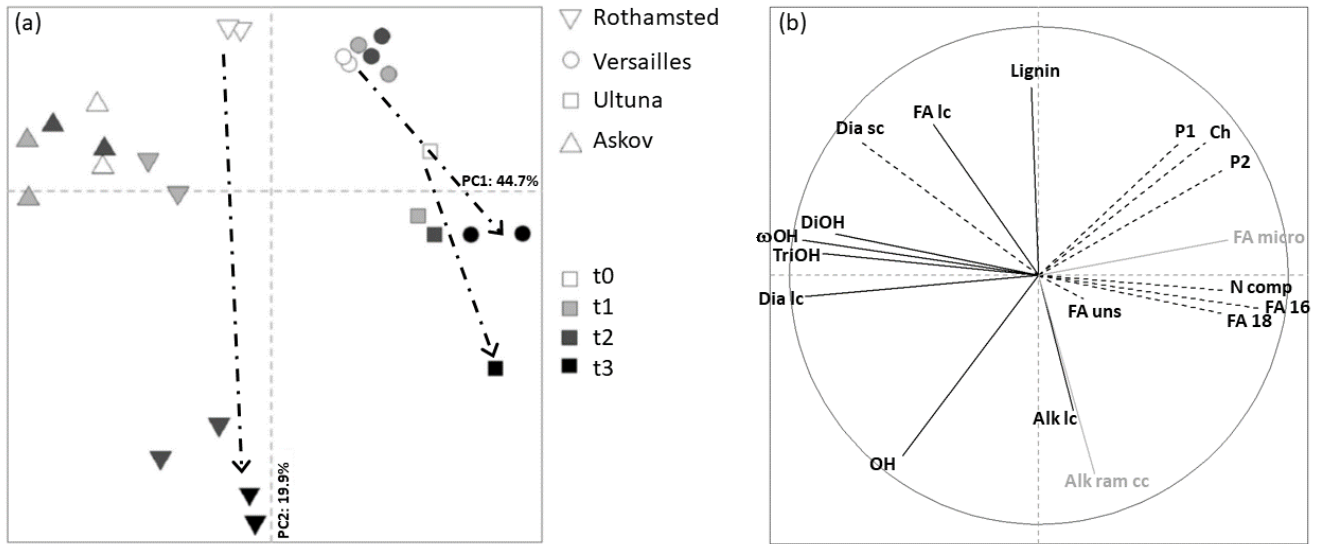
454

455



457

458 **Fig. 1** Total ion concentration (TIC) traces of 650°C Curie point pyrolysate of initial samples  
 459 of each site. Compound families are identified using various symbols. **C** refers to  
 460 “carbohydrates”, **N** to “N-containing compounds”, **●** to “lignin-derived” compounds and **★** to  
 461 other phenolic compounds. Aliphatic compounds were identified as follows: methyl esters of  
 462 microbe-derived fatty acids ( $\diamond$ ), long-chain methyl esters of n-alkanoic acids ( $\blacklozenge$ ),  $\omega$ -  
 463 hydroxyalkanoic acids ( $\blacktriangleright$ ), n-alkanedioic acids ( $\blacklozenge$ ), n-alkanes ( $\odot$ ), n-alkanols ( $\heartsuit$ ), 8,16 - 9,16  
 464 and 10, 16 or 18 dihydroxyhexadecanoic acids (DiOH16), 9,10,18 trihydroxyoctadecanoic acid  
 465 (TriOH). + corresponds to a contaminant and ? to an unidentified compound.



466

467 **Fig. 2** Scores (a) and loadings (b) of principal component analysis carried out with the relative  
 468 abundance of the 18 compounds (see Table 2 for description) of soil samples from different  
 469 durations of long-term bare fallow at four sites. Arrows on Figure 2a were added from visual  
 470 interpretation. Variables in black and grey with solid lines correspond to plant-derived and  
 471 microbe-derived compounds respectively. Variables in black with dashed lines correspond to  
 472 ubiquitous compounds.

473

474

475

476

477

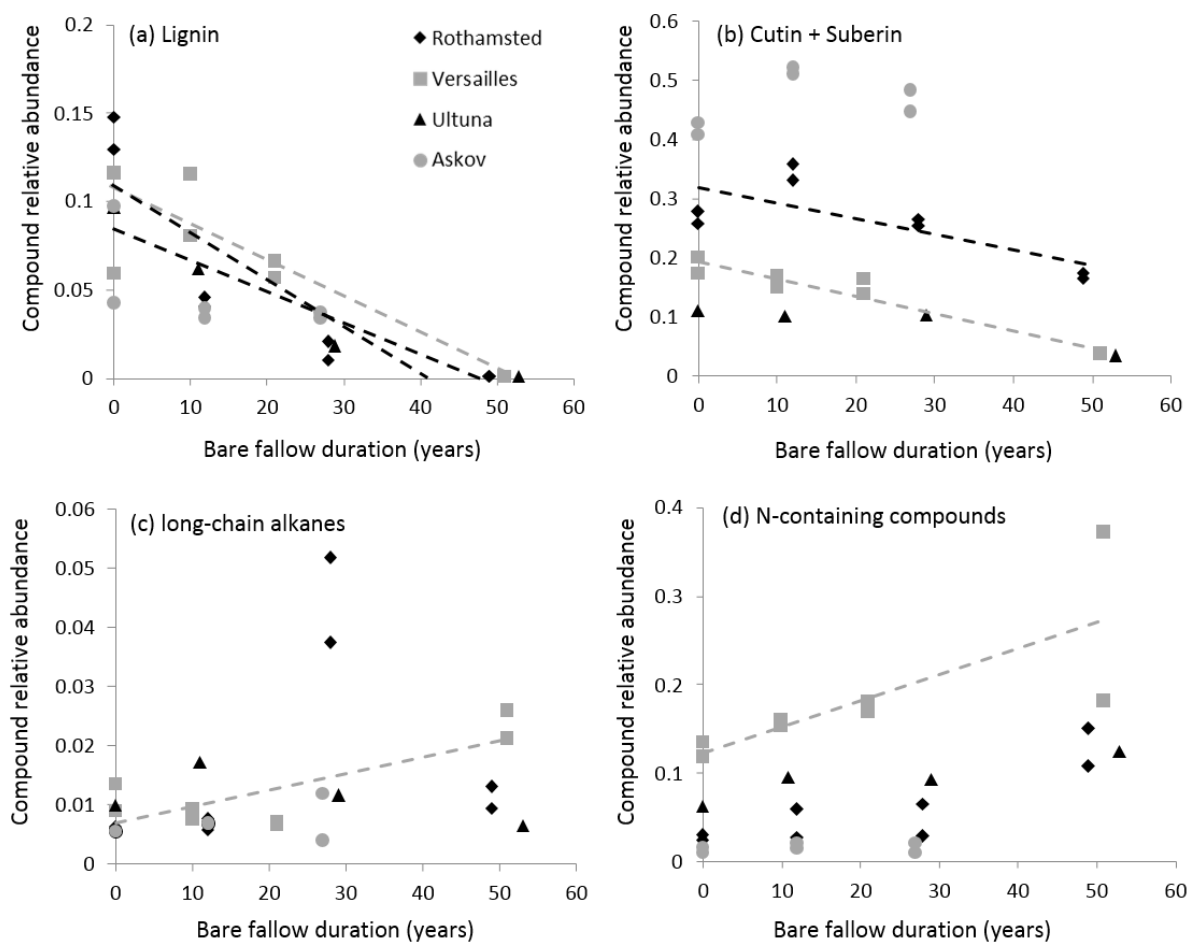
478

479

480

481

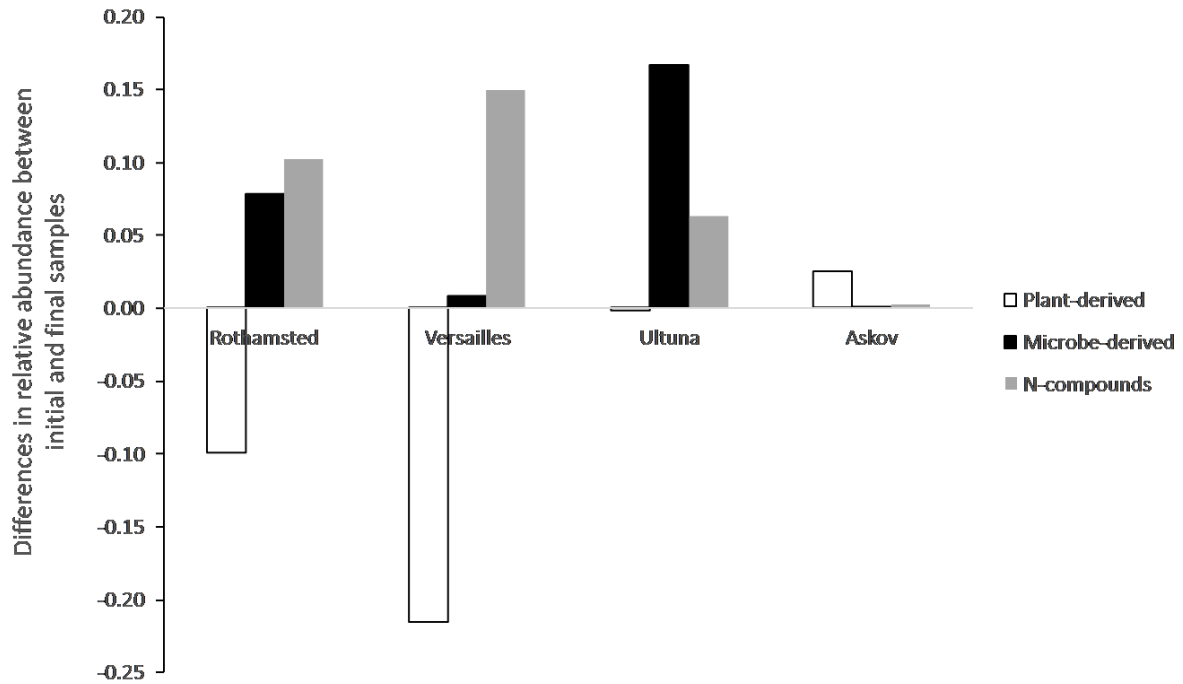
482



483

484 **Fig. 3** Evolution with bare fallow duration of the relative abundances of lignin, cutin+suberin  
 485 (sum of  $\omega$ OH, diacids long chain, TriOH and DiOH), long-chain alkanes and N-containing  
 486 compounds at four long-term bare fallow sites. As cutin- and suberin-derived products ( $\omega$ -  
 487 hydroxyalkanoic acids, *n*-alkanedioic acids, dihydroxyhexadecanoic acids,  
 488 trihydroxyoctadecanoic acid) had a similar contribution to the PCA axis (Figure 2b), their  
 489 relative abundances were combined in this figure. Dotted lines refer to statistically significant  
 490 ( $p < 0.05$ ) relationships.

491



492

493 **Fig. 4** Differences in the relative abundances of plant-derived, microbe-derived and N-  
 494 compounds between initial and final soil samples from four long-term bare fallow sites. All  
 495 compounds within the plant and microbial origins groups were summed. For Rothamsted,  
 496 Versailles and Askov, where two replicates were analyzed, the two values were averaged.  
 497 Differences were obtained by subtracting the averaged relative abundances in the final samples  
 498 from the averaged values in initial samples.

499

500

501

502

503

504

505

506

507

	Versailles (FR)	Rothamsted (UK)	Ultuna (SE)	Askov (DK)
Location	48°48' N 2°08' E	51°82' N 0°35' E	59°49' N 17°38' E	55°28' N 9°07' E
Mean annual temperature (°C)	10.7	9.5	5.5	7.8
Mean annual precipitation (mm)	628	712	533	862
FAO soil classification	Luvisol	Chromic Luvisol	Eutric Cambisol	Orthic Luvisol
Previous land-use	Unmanaged grassland	Managed grassland	Arable	Arable
Soil textural class (% sand/ silt/clay)	Silty loam (26/57/17)	Flinty silty clay loam (13/62/25)	Clay loam (23/41/36)	Coarse sandy loam (79/11/10)
Sampling depth (cm)	25	23	20	20
Experiment initiation year	1928	1959	1956	1956
Number of field replicate plots	2	2	1	2
Sampling year (OC concentration mgC g <sup>-1</sup> soil)	1929 (18.7 ; 16.2) 1939 (13.2 ; 11.9) 1950 (11.9 ; 11.3) 1980 (7.5 ; 7.4)	1959 (30.5 ; 30.1) 1971 (18.2 ; 18.1) 1987 (12.5 ; 13.9) 2008 (9.7 ; 10.3)	1956 (15.0) 1967 (13.3) 1985 (10.6) 2009 (9.1)	1956 (17.5 ; 16.9) 1968 (11.8 ; 14.1) 1983 (11.4 ; 11.2)

509

510 **Table 1** Selected site characteristics of four long-term bare fallow field experiments, and the  
511 identification of archived soil samples used for characterization of the molecular composition  
512 of soil organic matter.

513

514

515

516

Code (Figure 2)	Symbol (Figure 1)	Compound	Origin	Key references
Lignin	●	Lignin derived aromatic compounds	Higher plants	Clifford et al. (1995), Chefetz et al. (2000), Nierop (2001) and Otto et al. (2005)
<u>Other phenolic compounds</u>				
P1	★	1,4-Dimethoxy benzene	Higher plants	Chefetz et al. (2000)
P2	★	1,2,4-Trimethoxy benzene (4-methoxy catechol)	Higher plants	Fabbri & Helleur (1999)
<u>Aliphatic compounds</u>				
FAmicro	◇	C14, C14i, C15i,a and C17i,a n-alkanoic acids	Microorganisms	Wannigama et al. (1981), Quénéa et al. (2012)
FA_lc	◆	C20-32 even chain n-alkanoic acid	Higher plants	Chefetz et al. (2000), Wannigama et al. (1981)
FA16	FA16	C16 n-alkanoic acid	Ubiquitous	Nierop (2001)
FA18	FA18	C18 n-alkanoic acid	Ubiquitous	Wiesenberg et al. (2010)
FAuns	C16:1 C18:1	C16:1 and C18:1 n-alkanoic acid	Ubiquitous	Wiesenberg et al. (2010)
Alk_lc	⊙	C25–33 n-alkanes	Higher plants	Rieley et al. (1991), Wiesenberg et al. (2010)
Alk_ram_sc	⊙	C13–15 n-alkanes + ramified short chain alkanes	Microorganisms	Han and Calvin (1969)
OH	♥	C18–30 n-alkanols	Higher plants	Kolattukudy (1980), Quénéa et al. (2006)
ωOH	↘	C16–26 even chain x-hydroxyalkanoic acids	Higher plants (Cutin and Suberin)	Kolattukudy (1980) and Nierop (2001)
Dia_sc	☾	C8, C9 n-alkanedioic acids	Ubiquitous	Kolattukudy (1980) and Nierop (2001), Grasset & Ambès (1998)
Dia_lc	☾	C18, C22 and C24 n-alkanedioic acids	Higher plants (Cutin and Suberin)	Kolattukudy (1980) and Nierop (2001)
DiOH	DiOH16	8,16 - 9,16 and 10, 16 or 18 dihydroxyhexadecanoic acids	Higher plants (Cutin )	Riederer et al. (1993) and Del Río & Hatcher (1998)
TriOH	TriOH	9,10,18 trihydroxyoctadecanoic acid	Higher plants (Cutin )	Otto & Simpson (2006)
<u>Other compounds</u>				
Ch	C	Carbohydrates	Ubiquitous	
N-compounds	N	N-containing compounds	Ubiquitous	

517

518 **Table 2** Identified pyrolysis products, the probable origins of each product or group of  
519 products, and associated key references

