



HAL
open science

An entropy minimization approach to second-order variational mean-field games

Jean-David Benamou, Guillaume Carlier, Simone Di Marino, Luca Nenna

► **To cite this version:**

Jean-David Benamou, Guillaume Carlier, Simone Di Marino, Luca Nenna. An entropy minimization approach to second-order variational mean-field games. *Mathematical Models and Methods in Applied Sciences*, 2019. hal-01848370v4

HAL Id: hal-01848370

<https://hal.science/hal-01848370v4>

Submitted on 16 Sep 2019

HAL is a multi-disciplinary open access archive for the deposit and dissemination of scientific research documents, whether they are published or not. The documents may come from teaching and research institutions in France or abroad, or from public or private research centers.

L'archive ouverte pluridisciplinaire **HAL**, est destinée au dépôt et à la diffusion de documents scientifiques de niveau recherche, publiés ou non, émanant des établissements d'enseignement et de recherche français ou étrangers, des laboratoires publics ou privés.

An entropy minimization approach to second-order variational mean-field games

Jean-David Benamou ^{*} Guillaume Carlier [†]
Simone Di Marino [‡] Luca Nenna [§]

September 16, 2019

Abstract

We propose an entropy minimization viewpoint on variational mean-field games with diffusion and quadratic Hamiltonian. We carefully analyze the time-discretization of such problems, establish Γ -convergence results as the time step vanishes and propose an efficient algorithm relying on this entropic interpretation as well as on the Sinkhorn scaling algorithm.

Keywords: Mean-Field Games, Fokker-Planck equation, Γ -convergence entropy minimization, Schrödinger bridges, Sinkhorn algorithm.

MS Classification: 65K10, 49M05.

1 Introduction

It is well-known since the seminal work of Lasry and Lions [29, 30, 31] that the mean-field game system

$$\begin{cases} -\partial_t u - \frac{1}{2}\Delta u + \frac{1}{2}|\nabla u|^2 = f[\rho_t], & (t, x) \in (0, T) \times \mathbb{R}^d \\ \partial_t \rho - \frac{1}{2}\Delta \rho - \operatorname{div}(\rho \nabla u) = 0, & (t, x) \in (0, T) \times \mathbb{R}^d \\ \rho|_{t=0} = \rho_0, u|_{t=T} = g[\rho_T], \end{cases} \quad (1.1)$$

^{*}INRIA-Paris, MOKAPLAN, rue Simone Iff, 75012, Paris, FRANCE and CEREMADE Jean-David.Benamou@inria.fr.

[†]CEREMADE, UMR CNRS 7534, Université Paris IX Dauphine, Pl. de Latre de Tassigny, 75775 Paris Cedex 16, FRANCE and INRIA-Paris, MOKAPLAN carlier@ceremade.dauphine.fr

[‡]Indam, Unità SNS, Pisa, Italy simone.dimarino@altamatematica.it

[§]CNRS and CEREMADE nenna@ceremade.dauphine.fr

may be seen, at least formally (see [16] for a detailed analysis), as the system of optimality conditions for the minimization problem:

$$\inf_{(\rho,v)} \left\{ \mathcal{J}(\rho, v) : \partial_t \rho - \frac{1}{2} \Delta \rho + \operatorname{div}(\rho v) = 0, \rho|_{t=0} = \rho_0 \right\} \quad (1.2)$$

where

$$\mathcal{J}(\rho, v) := \frac{1}{2} \int_0^T \int_{\mathbb{R}^d} |v_t|^2 d\rho_t(x) dt + \int_0^T F(\rho_t) dt + G(\rho_T). \quad (1.3)$$

We assume here that f and g are *potentials* i.e. admit F and G as primitives that is, $f[\rho]$ and $g[\rho]$ represent the directional derivative of the functionals F and G at ρ in some suitable sense.

Our aim is to relate precisely the *Eulerian* variational problem (1.2)-(1.3) with a *Lagrangian* relative entropy minimization problem and to develop a suitable efficient algorithm based on this entropic interpretation. This entropy minimization approach has its roots in the classical paper of Schrödinger [39]. The Schrödinger bridge problem has deep connections with large deviations and has been extensively analyzed and developed by Mikami [35] and Léonard [32], [34] who in particular proved convergence of Schrödinger bridges to optimal transport geodesics as the noise intensity vanishes. We also refer to Cattiaux and Léonard [18] for further connections between entropy minimization, large deviations and optimal control.

Entropy minimization has also proved to be an efficient computational strategy for optimal transport by Cuturi [21] who made the connection with the powerful and versatile Sinkhorn scaling algorithm (also see [10]). One advantage of reformulating (1.2)-(1.3) as an entropy minimization is therefore that it enables one to use specific numerical schemes based on the Sinkhorn algorithm. However, the entropic viewpoint is, to the best of our knowledge, restricted to the quadratic Hamiltonian case and there are now efficient solvers, developed by Achdou and his coauthors [2, 1, 3] based on the PDE system which go much beyond the quadratic case. Guéant in [28] designed a monotone scheme specially intended for the quadratic Hamiltonian case, relying on ingenious changes of variables and the Hopf-Cole transform, the approach we propose in this paper shares some common features with Guéant's method. For variational numerical methods based on more traditional convex optimization techniques, we refer for instance to [9], [6] and [15].

The starting point of our analysis is the equivalence between the Schrödinger bridge problem and the optimal control (with kinetic energy as cost) of the Fokker-Planck equation as emphasized by Chen, Georgiou and Pavon [19]

and Gentil, Léonard and Ripani [26]. The recent work of Gigli and Tamanini [27] provides a very general and analytical approach to the dynamic formulation of entropic transport problems. The entropy minimization viewpoint has been recently fruitfully used in the context of incompressible flows by Arnaudon et al. [7] also see [12] for a numerical approach. Indeed, incompressibility (in the case of the flat torus instead of \mathbb{R}^d) can be seen as an instance of (1.2)-(1.3) in the somehow extreme case where $F(\rho)$ is 0 when ρ is uniform and $+\infty$ otherwise.

The fact that variational problems like (1.2) can be reformulated as entropy minimization is not new and goes back to the analysis of Dawson and Gärtner [22] on large deviations for weakly interacting diffusions. The connection between (1.2) and entropy minimization can be seen as a consequence of Girsanov theory (under weak regularity assumptions, see Léonard [33]), as explained in Föllmer [24] (see in particular section 1.4, p.165). In the present work, we will follow a different and more elementary approach, motivated by numerical considerations. We will show equivalence results at the level of discretized in time problems (which are precisely the ones we will numerically solve), prove Γ -convergence results as the discretization step vanishes and recover as a consequence equivalence for the continuous time minimization in (1.2) and an entropy minimization at the level of the path space.

The paper is organized as follows. Section 2 is devoted to some preliminaries and introduces an entropy minimization problem we propose as a Lagrangian counterpart of (1.2). In section 3, the time discretization of both the Lagrangian and Eulerian problems are shown to be equivalent. We then establish a Γ -convergence result which enables to recover the equivalence of the two formulations at the continuous time level as well in section 4. In section 5, we propose a numerical scheme, based on the Sinkhorn scaling algorithm to solve the entropy minimization problem and we present some numerical experiments.

Acknowledgments. We want to thank the anonymous referees for their observations and careful reading of the paper. Part of this work was done while D.M. was a FSMP visitor researcher in INRIA. J.-D. Benamou and G. Carlier were partially supported by the ANR (Agence Nationale de la Recherche) project ANR-16-CE40-0015-01. J.-D. Benamou, G. Carlier and L. Nenna would also like to acknowledge the support from the project MAGA ANR-16-CE40-0014 (2016-2020).

2 Preliminaries

We denote by $\mathcal{P}_2(\mathbb{R}^d)$ the set of Borel probability measures with finite second moments, endowed with the Wasserstein distance \mathcal{W}_2 , whose square is defined by

$$\mathcal{W}_2^2(\rho_0, \rho_1) := \inf_{\gamma \in \Pi(\rho_0, \rho_1)} \left\{ \int_{\mathbb{R}^d \times \mathbb{R}^d} |x - y|^2 d\gamma(x, y) \right\}, \quad (\rho_0, \rho_1) \in \mathcal{P}_2(\mathbb{R}^d) \times \mathcal{P}_2(\mathbb{R}^d)$$

$\Pi(\rho_0, \rho_1)$ being the set of transport plans between ρ_0 and ρ_1 i.e. the set of probability measures on $\mathbb{R}^d \times \mathbb{R}^d$ having ρ_0 and ρ_1 as marginals.

We denote by \mathcal{L}^d the Lebesgue measure on \mathbb{R}^d and whenever a measure ρ is absolutely continuous with respect to \mathcal{L}^d , we will denote by ρ both the measure itself and its density with respect to \mathcal{L}^d . Throughout the paper we will assume that F and G can be written as the sum of a convex local term and a term which is continuous for the Wasserstein distance \mathcal{W}_2 i.e.

$$F = F_1 + F_2, \quad G = G_1 + G_2,$$

such that

- there are convex continuous integrands L_F and $L_G : \mathbb{R}^d \rightarrow \mathbb{R}_+$ such that $L_F(0) = L_G(0) = 0$ and

$$F_1(\rho) = \begin{cases} \int_{\mathbb{R}^d} L_F(\rho(x)) dx & \text{if } \rho \ll \mathcal{L}^d \\ +\infty & \text{otherwise} \end{cases},$$

$$G_1(\rho) = \begin{cases} \int_{\mathbb{R}^d} L_G(\rho(x)) dx & \text{if } \rho \ll \mathcal{L}^d \\ +\infty & \text{otherwise} \end{cases}$$

- $F_2, G_2 : \mathcal{P}_2(\mathbb{R}^d) \rightarrow \mathbb{R}_+$ are continuous for \mathcal{W}_2 .

Given a Polish space X , a Borel probability measure q on X and r a σ -finite measure on X , the relative entropy of q with respect to r is given¹ by

$$H(q|r) := \begin{cases} \int_X \log \left(\frac{dq}{dr} \right) dq & \text{if } q \ll r \\ +\infty & \text{otherwise} \end{cases}$$

¹some caution must be taken when r is σ -finite but unbounded, in this case one can find a measurable and bounded from below potential $V: X \mapsto \mathbb{R}$ such that $e^{-V}r$ is a probability measure on X and then define for each probability q for which $\int_X V dq < +\infty$ $H(q|r)$ as $H(q|r) = H(q|e^{-V}r) - \int_X V dq$ see Appendix 1 in [34] for details. When R is the reversible Wiener measure, we shall apply this trick with $V(\omega) = \pi|\omega(0)|^2$ which will enable us to define $H(Q|R)$ as soon as $Q_0 \in \mathcal{P}_2(\mathbb{R}^d)$.

where $\frac{dq}{dr}$ stands for the Radon-Nikodym derivative of q with respect to r . If $X = \mathbb{R}^d$ and $\rho \in \mathcal{P}_2(\mathbb{R}^d)$ we shall simply denote by $\text{Ent}(\rho)$ the relative entropy of ρ with respect to \mathcal{L}^d . Let us also recall that Ent is controlled from below by the second moment (see (4.2) for a linear lower bound). We shall always assume that the initial condition ρ_0 satisfies

$$\rho_0 \in \mathcal{P}_2(\mathbb{R}^d) \cap L^1(\mathbb{R}^d), \text{ and } \text{Ent}(\rho_0) < +\infty \quad (2.1)$$

so that $-\infty < \text{Ent}(\rho_0) < +\infty$.

As outlined in the introduction, our goal is to relate (1.2) with a relative entropy minimization over the path space $\Omega := C([0, T], \mathbb{R}^d)$. Let e_t denote the evaluation at time $t \in [0, T]$ i.e. $e_t(\omega) = \omega(t)$ for every $\omega \in \Omega$. We take as reference measure on Ω the reversible Wiener measure R defined by

$$R := \int_{\mathbb{R}^d} \delta_{x+B} dx \quad (2.2)$$

where $B = (B_t)_{t \in [0, T]}$ is a standard d -dimensional Brownian motion starting at 0. Given $Q \in \mathcal{P}(\Omega)$ a Borel probability measure on Ω , set

$$Q_t := e_t \# Q, \quad Q_{s,t} := (e_t, e_s) \# Q, \quad 0 \leq s < t \leq T, \quad (2.3)$$

and more generally if $t_1, \dots, t_n \in [0, T]^n$

$$Q_{t_1, \dots, t_n} := (e_{t_1}, \dots, e_{t_n}) \# Q.$$

We define similarly R_t , $R_{s,t}$ and R_{t_1, \dots, t_n} and observe that by construction $R_t := e_t \# R = \mathcal{L}^d$ for every $t \in [0, T]$ and for every $0 \leq s < t \leq T$, $R_{s,t} = (e_t, e_s) \# R$ is given by

$$R_{s,t}(dx, dy) = P_{t-s}(x - y) dx dy$$

where P_t is the heat kernel²:

$$P_t(z) := \frac{1}{(2\pi t)^{\frac{d}{2}}} \exp\left(-\frac{|z|^2}{2t}\right), \quad t > 0, \quad x \in \mathbb{R}^d. \quad (2.4)$$

Let us finally introduce a few notations. Given $\mu, \nu \in \mathcal{P}_2(\mathbb{R}^d)$ and $h \in (0, T)$ let us define $\text{FP}_h(\mu, \nu)$ as the infimum of the kinetic energy

$$\text{FP}_h(\mu, \nu) := \inf_{(\rho, v)} \left\{ \frac{1}{2} \int_0^h \int_{\mathbb{R}^d} |v_t|^2 d\rho_t(x) dt \right\} \quad (2.5)$$

²Note that our convention is to take the heat kernel associated with $\frac{1}{2}\Delta$.

among pairs (ρ, v) solving the Fokker-Planck equation on $(0, h) \times \mathbb{R}^d$ with endpoints μ and ν

$$\partial_t \rho - \frac{1}{2} \Delta \rho + \operatorname{div}(\rho v) = 0, \quad \rho|_{t=0} = \mu, \quad \rho|_{t=h} = \nu.$$

Also define

$$S_h(\mu, \nu) := \inf \{ H(Q|R) : Q \in \mathcal{P}(C([0, h], \mathbb{R}^d), Q_0 = \mu, Q_h = \nu) \} \quad (2.6)$$

(where, slightly abusing notations in the formula above, R denotes the reversible Wiener measure on $C([0, h], \mathbb{R}^d)$). Following Léonard [34], and writing the disintegrations of Q and R with respect to their marginals $Q_{0,h}, R_{0,h}$:

$$Q = \int_{\mathbb{R}^d \times \mathbb{R}^d} Q(\cdot | x_0, x_h) dQ_{0,h}(x_0, x_h), \quad R = \int_{\mathbb{R}^d \times \mathbb{R}^d} R(\cdot | x_0, x_h) dR_{0,h}(x_0, x_h)$$

(so that $R(\cdot | x_0, x_h)$ is the probability Law of a Brownian bridge) since

$$H(Q|R) = H(Q_{0,h}|R_{0,h}) + \int_{\mathbb{R}^d \times \mathbb{R}^d} H(Q(\cdot | x_0, x_h)|R(\cdot | x_0, x_h)) dQ_{0,h}(x_0, x_h)$$

and $H(Q(\cdot | x_0, x_h)|R(\cdot | x_0, x_h)) \geq 0$ with an equality when $Q(\cdot | x_0, x_h) = R(\cdot | x_0, x_h)$ (which means that R and the optimal Q share the same bridge) one can express S_h as the value of a static entropy minimization problem:

$$S_h(\mu, \nu) = \inf \{ H(\gamma|R_{0,h}) : \gamma \in \Pi(\mu, \nu) \} \quad (2.7)$$

and the solution of the dynamic problem (2.6) is obtained by

$$Q = \int_{\mathbb{R}^d \times \mathbb{R}^d} R(\cdot | x_0, x_h) d\gamma(x_0, x_h)$$

with γ optimal for the static problem (2.7).

The following result, proven in Chen, Georgiou, Pavon [19] and Gentil, Léonard and Ripani [26] (in a more general setting) connects FP_h to S_h and can be viewed as a noisy version of the Benamou-Brenier formula:

Theorem 2.1. *Let $\mu, \nu \in \mathcal{P}_2(\mathbb{R}^d)$ and $h \in (0, T)$, $\operatorname{FP}_h(\mu, \nu)$ and $S_h(\mu, \nu)$ are related by*

$$S_h(\mu, \nu) = \operatorname{FP}_h(\mu, \nu) + \operatorname{Ent}(\mu). \quad (2.8)$$

Let us also mention an alternative formulation, involving the Fisher information (see [26, 19]):

$$\operatorname{FP}_h(\mu, \nu) = \inf_{(\rho, v)} \left\{ \int_0^h \left(\int_{\mathbb{R}^d} \frac{1}{2} |v_t|^2 d\rho_t(x) + \frac{1}{8} I(\rho_t) \right) dt \right\} + \frac{1}{2} (\operatorname{Ent}(\nu) - \operatorname{Ent}(\mu)) \quad (2.9)$$

where the infimum is taken among solutions³ of the continuity equation with fixed endpoints

$$\partial_t \rho + \operatorname{div}(\rho v) = 0, \quad \rho|_{t=0} = \mu, \quad \rho|_{t=h} = \nu$$

and I denotes the Fisher information

$$I(\rho) := \int_{\mathbb{R}^d} |\nabla \log(\rho)|^2 \rho = \int_{\mathbb{R}^d} \frac{|\nabla \rho|^2}{\rho} = 4 \|\nabla(\sqrt{\rho})\|_{L^2(\mathbb{R}^d)}^2. \quad (2.10)$$

Given a continuous curve of measures $\mu \in C([0, T], (\mathcal{P}_2(\mathbb{R}^d), \mathcal{W}_2)) : t \in [0, T] \mapsto \mu_t \in \mathcal{P}_2(\mathbb{R}^d)$ define

$$\mathcal{E}(\mu) := \inf_v \left\{ \frac{1}{2} \int_0^T \int_{\mathbb{R}^d} |v_t|^2 d\mu_t(x) dt : \partial_t \mu - \frac{1}{2} \Delta \mu + \operatorname{div}(\mu v) = 0 \right\}$$

as well as the cost

$$\mathcal{C}(\mu) := G(\mu_T) + \int_0^T F(\mu_t) dt$$

so that the variational formulation (1.2)-(1.3) of the MFG system can be simply rewritten as

$$\inf \{ \mathcal{E}(\mu) + \mathcal{C}(\mu) : \mu \in C([0, T], (\mathcal{P}_2(\mathbb{R}^d), \mathcal{W}_2)), \mu|_{t=0} = \rho_0 \} \quad (2.11)$$

For $\mu = (\mu_t)_{t \in [0, T]} \in C([0, T], (\mathcal{P}_2(\mathbb{R}^d), \mathcal{W}_2))$, define also the minimal entropic cost

$$\mathcal{S}(\mu) := \inf \{ H(Q|R) : Q_t = \mu_t, \forall t \in [0, T] \} \quad (2.12)$$

which can be viewed as a variant of (2.6) with infinitely many marginal constraints. We shall prove, by a careful inspection of a suitable time discretization (section 3) and Γ -convergence arguments (see section 4), that when $\operatorname{Ent}(\mu_0) < +\infty$ the following relation holds

$$\mathcal{S}(\mu) = \mathcal{E}(\mu) + \operatorname{Ent}(\mu_0)$$

so that (2.11) can be reformulated as

$$\inf \left\{ H(Q|R) + \mathcal{C}((Q_t)_{t \in [0, T]}) : Q \in \mathcal{P}(\Omega), Q_0 = \rho_0 \right\}. \quad (2.13)$$

³Note that if $\int_0^T \int_{\mathbb{R}^d} |v_t|^2 d\rho_t(x) dt < +\infty$ and $\partial_t \rho + \operatorname{div}(\rho v) = 0$ then $t \mapsto \rho_t$ is continuous in \mathcal{W}_2 .

3 Time discretization

3.1 Discretization

Given a positive integer N and $\mu_0, \dots, \mu_N \in \mathcal{P}_2(\mathbb{R}^d)$, define the respective discretization of \mathcal{E} , \mathcal{C} and \mathcal{S} :

$$\mathcal{E}^N(\mu_0, \dots, \mu_N) := \sum_{k=0}^{N-1} \text{FP}_{\frac{T}{N}}(\mu_k, \mu_{k+1}), \quad (3.1)$$

$$\mathcal{C}^N(\mu_0, \dots, \mu_N) := \frac{T}{N} \sum_{k=1}^{N-1} F(\mu_k) + G(\mu_N) \quad (3.2)$$

and

$$\mathcal{S}^N(\mu_0, \dots, \mu_N) := \inf \left\{ H(Q|R) : Q \in \mathcal{P}(\Omega), Q_{\frac{kT}{N}} = \mu_k, k = 0, \dots, N \right\} \quad (3.3)$$

and observe that, exactly as for (2.6), \mathcal{S}^N can be written as the value of the static multi-marginal problem

$$\mathcal{S}^N(\mu_0, \dots, \mu_N) := \inf_{\gamma^N \in \Pi(\mu_0, \dots, \mu_N)} H(\gamma^N | R^N) \quad (3.4)$$

where $\Pi(\mu_0, \dots, \mu_N)$ is the set of probability measures on $(\mathbb{R}^d)^{N+1}$ having μ_0, \dots, μ_N as marginals and

$$R^N := R_{0, \frac{T}{N}, \dots, T}. \quad (3.5)$$

One then discretizes (2.11) as

$$\inf \{ \mathcal{E}^N(\mu_0, \dots, \mu_N) + \mathcal{C}^N(\mu_0, \dots, \mu_N), \mu_i \in \mathcal{P}_2(\mathbb{R}^d), \mu_0 = \rho_0 \}. \quad (3.6)$$

In an analogous way, the discrete counterpart of (2.13) becomes

$$\inf \{ \mathcal{S}^N(\mu_0, \dots, \mu_N) + \mathcal{C}^N(\mu_0, \dots, \mu_N), \mu_i \in \mathcal{P}_2(\mathbb{R}^d), \mu_0 = \rho_0 \}. \quad (3.7)$$

3.2 On entropy minimization and Markovianity

In this section, our aim is to emphasize the role of Markovianity in entropy minimization problems with fixed marginals as in (3.3). First, we need to recall some fundamentals regarding disintegrations and conditional laws. Given Y_1 and Y_2 , two Polish space and a Borel probability measure $P \in \mathcal{P}(Y_1 \times Y_2)$ on the product and denoting by P_1 the first marginal of P , the disintegration

Theorem (see [23]) says that there exists a (P_1 -a.e. unique) Borel family of probability measure $y_1 \mapsto P(\cdot|y_1) \in \mathcal{P}(Y_2)$ such that

$$P(dy_1 dy_2) = P_1(dy_1)P(dy_2|y_1) \quad (3.8)$$

(3.8) is called the disintegration of P with respect to its first marginal P_1 and means that for every $\varphi \in C_b(Y_1 \times Y_2)$ one has

$$\int_{Y_1 \times Y_2} \varphi dP = \int_{Y_1} \left(\int_{Y_2} \varphi(y_1, y_2) dP(y_2|y_1) \right) dP_1(y_1).$$

Of course $P(\cdot|y_1)$ can be interpreted as the conditional probability of y_2 given y_1 . In a similar way, P can be disintegrated with respect to its second marginal as

$$P(dy_1 dy_2) = P(dy_1|y_2)P_2(dy_2). \quad (3.9)$$

Given $n \geq 3$, n Polish spaces X_1, \dots, X_n , $X := X_1 \times X_2 \times \dots \times X_n$ and $Q \in \mathcal{P}(X)$, denoting by e_i the i -th canonical projection from X to X_i , we define

$$Q_i := e_{i\#}Q, \quad Q_{i,\dots,k} := (e_i, \dots, e_k)\#Q, \quad \text{for } 1 \leq i < k \leq n.$$

Given i, k with $1 \leq k < i \leq n$, the disintegration theorem recalled above (with $Y_1 = X_1 \times \dots \times X_k$ and $Y_2 = X_{k+1} \times \dots \times X_i$) gives the (past, and future conditioned) disintegrations:

$$\begin{aligned} Q_{1,\dots,i}(dx_1 \dots dx_i) &= Q_{1,\dots,k}(dx_1 \dots dx_k) Q_{1,\dots,i}(dx_{k+1} \dots dx_i | x_1, \dots, x_k) \\ &= Q_{1,\dots,i}(dx_1 \dots dx_k | x_{k+1}, \dots, x_i) Q_{k+1,\dots,i}(dx_{k+1} \dots dx_i). \end{aligned}$$

Definition 3.1. Let $n \geq 3$, X_1, \dots, X_n be Polish spaces, $X := X_1 \times X_2 \times \dots \times X_n$, a Borel probability measure on X , Q , is called Markovian if for every i with $3 \leq i \leq n$ one has

$$Q_{1,\dots,i}(dx_i | x_1, \dots, x_{i-1}) = Q_{i-1,i}(dx_i | x_{i-1}).$$

Interpreting i as a discrete time index, the previous definition agrees with the more standard notion of Markov process in the sense that Q is a Markovian measure if it is the law of a Markov process. Note also that if Q is Markovian so are $Q_{1,\dots,n-1}$ and $Q_{2,\dots,n}$.

The discretized reversible Wiener measure measure R^N defined by (3.5) is not a probability measure (it is not even finite but just σ -finite) however the equivalent measure on $(\mathbb{R}^d)^{N+1}$

$$\tilde{R}^N(dx_0 \dots dx_N) := e^{-\pi|x_0|^2} R^N(dx_0 \dots dx_N), \quad (3.10)$$

is a Markov probability measure. Let us now define Markov concatenations (or glued plans):

Definition 3.2. Given Polish spaces Y_1, Y_2, Y_3 , two Borel probability measures $P_{12} \in \mathcal{P}(Y_1 \times Y_2)$ and $P_{23} \in \mathcal{P}(Y_2 \times Y_3)$ having the same marginal P_2 on Y_2 , the Markov-concatenation of the two plans P_{12} and P_{23} , which we denote by $P_{12} \circ P_{23}$ is the Borel probability measure on $Y_1 \times Y_2 \times Y_3$ defined by

$$(P_{12} \circ P_{23})(dy_1 dy_2 dy_3) = P_{12}(dy_1|y_2)P_2(dy_2)P_{23}(dy_3|y_2) \quad (3.11)$$

Note that $(e_1, e_2)_\#(P_{12} \circ P_{23}) = P_{12}$, $(e_2, e_3)_\#(P_{12} \circ P_{23}) = P_{23}$. Note also that $P_{12} \circ P_{23}$ can be written equivalently as

$$\begin{aligned} (P_{12} \circ P_{23})(dy_1 dy_2 dy_3) &= P_{12}(dy_1 dy_2)P_{23}(dy_3|y_2) \\ &= P_{12}(dy_1|y_2)P_{23}(dy_2 dy_3) \end{aligned}$$

which obviously implies that $(P_{12} \circ P_{23})$ is Markovian on $Y_1 \times Y_2 \times Y_3$.

Conversely, the same calculation proves also that if Q is Markovian and $(e_i, e_j)_\#Q = Q_{ij}$, then $Q = Q_{12} \circ Q_{23}$. In fact, by definition of Markovian measure, we have

$$Q(dy_1 dy_2 dy_3) = Q_{12}(dy_1 dy_2)Q_{23}(dy_3|y_2);$$

then applying the disintegration theorem to Q_{12} gives us exactly the representation given in (3.11), proving the claim.

If now $n \geq 3$ and $Q \in \mathcal{P}(X)$ with $X = X_1 \times \cdots \times X_n$ as above, for every pair of indices $1 \leq k < i \leq n$ since $Q_{1,\dots,k}$ and $Q_{k,\dots,i}$ share the same marginal on X_k , one can define the concatenation $Q_{1,\dots,k} \circ Q_{k,\dots,i}$. The characterization of Markov measures in terms of concatenations is given by:

Lemma 3.3. Let $n \geq 3$, X_1, \dots, X_n be Polish spaces, $X := X_1 \times X_2 \times \cdots \times X_n$ and Q be a Borel probability measure on X then the following statements are equivalent

1. Q is Markovian,
2. $Q_{1,\dots,n-1}$ is Markovian and $Q = Q_{1,\dots,n-1} \circ Q_{n-1,n}$,
3. $Q_{2,\dots,n}$ is Markovian and $Q = Q_{1,2} \circ Q_{2,\dots,n}$.

Proof. 1. obviously implies 2.. Assume now that 2. holds and let us show that $Q_{2,\dots,n}$ is Markovian, first note that $Q_{2,\dots,n-1}$ is Markovian since $Q_{1,\dots,n-1}$ is and since $Q = Q_{1,\dots,n-1} \circ Q_{n-1,n}$ we also have $Q_{2,\dots,n} = Q_{2,\dots,n-1} \circ$

$Q_{n-1,n}$ which by uniqueness of the disintegration proves that $Q_{2,\dots,n}(dx_n|x_1, \dots, x_{n-1}) = Q_{n-1,n}(dx_n|x_{n-1})$, this proves the Markovianity of $Q_{2,\dots,n}$. Now observe

$$\begin{aligned} Q &= Q_{12}(dx_1 dx_2) Q(dx_3 \dots dx_n | x_1, x_2) \\ &= Q_{12}(dx_1 dx_2) Q_{1,\dots,n-1}(dx_3 \dots dx_{n-1} | x_1, x_2) Q(dx_n | x_1, \dots, x_{n-1}) \\ &= Q_{12}(dx_1 dx_2) Q_{1,\dots,n-1}(dx_3 \dots dx_{n-1} | x_2) Q_{n-1,n}(dx_n | x_{n-1}) \\ &= Q_{12}(dx_1 dx_2) Q_{2,\dots,n-1}(dx_3 \dots dx_{n-1} | x_2) Q_{2,\dots,n}(dx_n | x_2, \dots, x_{n-1}) \\ &= Q_{12}(dx_1 dx_2) Q_{2,\dots,n}(dx_3 \dots dx_n | x_2) = Q_{1,2} \circ Q_{2,\dots,n} \end{aligned}$$

where we have used that $Q_{1,\dots,n-1}$ is Markov and $Q = Q_{1,\dots,n-1} \circ Q_{n-1,n}$ in the third line, and the Markovianity of $Q_{2,\dots,n}$ in the fourth line to replace $Q_{n-1,n}(dx_n | x_{n-1}) = Q_{2,\dots,n}(dx_n | x_{n-1})$ with $Q_{2,\dots,n}(dx_n | x_2, \dots, x_{n-1})$.

Finally, assume that 3. holds, and let us fix $3 \leq i \leq n$; thanks to the Markovianity of $Q_{2,\dots,n}$, we have

$$\begin{aligned} Q_{1,\dots,i}(dx_1 \dots dx_i) &= Q_{12}(dx_1 | x_2) Q_{2,\dots,i}(dx_2 \dots dx_i) \\ &= Q_{12}(dx_1 | x_2) Q_{2,\dots,i-1}(dx_2 \dots dx_{i-1}) Q_{i-1,i}(dx_i | x_{i-1}) \end{aligned}$$

which yields, again by uniqueness of disintegrations, that $Q_{1,\dots,i}(dx_i | x_{i-1}) = Q_{i-1,i}(dx_i | x_{i-1})$ so that Q is Markovian. \square

An immediate consequence of the previous Lemma is that when Q is Markovian then

$$Q_{1,\dots,4} = Q_{1,2} \circ (Q_{2,3} \circ Q_{3,4}) = (Q_{1,2} \circ Q_{2,3}) \circ Q_{3,4}$$

so that the successive concatenation operations are associative, hence we shall simply write, without parentheses

$$Q = Q_{1,2} \circ \dots \circ Q_{n-1,n}.$$

Lemma 3.4. *Given the product of Polish spaces $X = X_1 \times X_2 \times \dots \times X_n$, probability measures $P \in \mathcal{P}(X)$ and $R \in \mathcal{M}(P)$, let us denote $P_i = (e_i)_{\#} P$, $R_i = (e_i)_{\#} R$, $P_{i,i+1} = (e_i, e_{i+1})_{\#} P$ and $R_{i,i+1} = (e_i, e_{i+1})_{\#} R$. Let us suppose that R is Markovian so that $R = R_{1,2} \circ R_{2,3} \circ \dots \circ R_{n-1,n}$, then we have*

$$H(P|R) \geq \sum_{i=1}^{n-1} H(P_{i,i+1}|R_{i,i+1}) - \sum_{i=2}^{n-1} H(P_i|R_i),$$

with equality if and only if P is itself Markov so that if $P = P_{1,2} \circ P_{2,3} \circ \dots \circ P_{n-1,n}$.

Proof. We will prove the lemma by induction on n , starting with the first nontrivial case $n = 3$. For $n = 3$, we have

$$H(P_{12}|R_{12}) = H(P_2|R_2) + \int_{X_2} H(P_{12}(dx_1|x_2)|R_{12}(dx_1|x_2))dP_2(x_2)$$

and

$$H(P_{23}|R_{23}) = H(P_2|R_2) + \int_{X_2} H(P_{23}(dx_3|x_2)|R_{23}(dx_3|x_2))dP_2(x_2)$$

but

$$H(P|R) = H(P_2|R_2) + \int_{X_2} H(P(dx_1dx_3|x_2)|R(dx_1dx_3|x_2))dP_2(x_2).$$

Let us recall that it follows from the strict convexity of $t \in \mathbb{R}_+ \mapsto t \log(t)$ that if γ is a probability measure on a product space with marginals γ_1 and γ_2 then $H(\gamma|\mu_1 \otimes \mu_2) \geq H(\gamma_1|\mu_1) + H(\gamma_2|\mu_2)$ with equality exactly when γ is a product measure $\gamma = \gamma_1 \otimes \gamma_2$. Then, observing that for P_2 almost every x_2 , the conditional probability, $P(dx_1dx_3|x_2)$ has marginals $P_{12}(dx_1|x_2)$ and $P_{23}(dx_3|x_2)$ and that since R is Markov $R(dx_1dx_3|x_2) = R_{12}(dx_1|x_2) \otimes R_{23}(dx_3|x_2)$, we have

$$\begin{aligned} H(P(dx_1dx_3|x_2)|R(dx_1dx_3|x_2)) &\geq H(P_{12}(dx_1|x_2)|R_{12}(dx_1|x_2)) \\ &\quad + H(P_{23}(dx_3|x_2)|R_{23}(dx_3|x_2)) \end{aligned}$$

with an equality if and only if $P(dx_1dx_3|x_2) = P_{12}(dx_1|x_2)P_{23}(dx_3|x_2)$ i.e. P is Markov. This proves the claim for $n = 3$. Assume the claim is satisfied for n and consider $P \in \mathcal{P}(X_1 \times \cdots \times X_{n+1})$ and R a Markov probability on $X_1 \times \cdots \times X_{n+1}$, we then have

$$\begin{aligned} H(P|R) &= H(P_{1,\dots,n}|R_{1,\dots,n}) + \\ &\quad \int_{X_1 \times \cdots \times X_n} H(P(dx_{n+1}|x_1, \dots, x_n)|R(dx_{n+1}|x_1, \dots, x_n))dP_{1,\dots,n}(x_1, \dots, x_n). \end{aligned}$$

From the validity of the claim for $P_{1,\dots,n}$ and $R_{1,\dots,n}$, we have

$$H(P_{1,\dots,n}|R_{1,\dots,n}) \geq \sum_{i=1}^{n-1} H(P_{i,i+1}|R_{i,i+1}) - \sum_{i=2}^{n-1} H(P_i|R_i). \quad (3.12)$$

So we are left to show that

$$\begin{aligned} &\int_{X_1 \times \cdots \times X_n} H(P(dx_{n+1}|x_1, \dots, x_n)|R(dx_{n+1}|x_1, \dots, x_n))dP_{1,\dots,n}(x_1, \dots, x_n) \\ &\geq H(P_{n,n+1}|R_{n,n+1}) - H(P_n|R_n) \\ &= \int_{X_n} H(P_{n,n+1}(dx_{n+1}|x_n)|R_{n,n+1}(dx_{n+1}|x_n))dP_n(x_n). \end{aligned}$$

Now we observe that since R is Markov $R(dx_{n+1}|x_1, \dots, x_n) = R_{n,n+1}(dx_{n+1}|x_n)$, we then write

$$\begin{aligned} & \int_{X_1 \times \dots \times X_n} H(P(dx_{n+1}|x_1, \dots, x_n)|R_{n,n+1}(dx_{n+1}|x_n)dP_{1,\dots,n}(x_1, \dots, x_n)) \\ &= \int_{X_n} \left(\int_{X_1 \times \dots \times X_{n-1}} H(P(dx_{n+1}|x_1, \dots, x_n)|R(dx_{n+1}|x_n))dP_{1,\dots,n}(x_1, \dots, x_{n-1}|x_n) \right) dP_n(x_n) \end{aligned}$$

using the convexity of $H(\cdot|R(dx_{n+1}|x_n))$ and the fact that

$$\int_{X_1 \times \dots \times X_{n-1}} P(dx_{n+1}|x_1, \dots, x_n)dP_{1,\dots,n}(x_1, \dots, x_{n-1}|x_n) = P_{n,n+1}(dx_{n+1}|x_n)$$

we deduce

$$\begin{aligned} & \int_{X_1 \times \dots \times X_{n-1}} H(P(dx_{n+1}|x_1, \dots, x_n)|R(dx_{n+1}|x_n))dP_{1,\dots,n}(x_1, \dots, x_{n-1}|x_n) \\ & \geq H(P_{n,n+1}(dx_{n+1}|x_n)|R_{n,n+1}(dx_{n+1}|x_n)) \end{aligned}$$

integrating with respect to $dP_n(x_n)$ gives the desired inequality. Now in the equality case, there should be an equality in (3.12) so that $P_{1,\dots,n}$ should be Markov, but there should also be an inequality in the convexity inequality for the relative entropy above which implies that $P(dx_{n+1}|x_1, \dots, x_n) = P_{n,n+1}(dx_{n+1}|x_n)$ and these two conditions imply that P is Markov thanks to Lemma . \square

As a consequence of Lemma 3.4 and the Markovianity of the reversible Wiener measure we deduce

Corollary 3.5. *Let $(\mu_0, \dots, \mu_N) \in (\mathcal{P}_2(\mathbb{R}^d))^{N+1}$, one has*

$$\begin{aligned} \mathcal{S}^N(\mu_0, \dots, \mu_N) &= \sum_{i=0}^{N-1} S_{\frac{T}{N}}(\mu_i, \mu_{i+1}) - \sum_{i=1}^{N-1} \text{Ent}(\mu_i) \\ &= \mathcal{E}^N(\mu_0, \dots, \mu_N) + \text{Ent}(\mu_0). \end{aligned}$$

Proof. Let us define the Markov probability measure \tilde{R}^N by (3.10). Then we have

$$\mathcal{S}^N(\mu_0, \dots, \mu_N) = \inf_{\gamma^N \in \Pi(\mu_0, \dots, \mu_N)} H(\gamma^N|\tilde{R}^N) - H(\mu_0|\tilde{R}_0) + \text{Ent}(\mu_0)$$

The Markovianity of \tilde{R}^N and Lemma 3.4 then give

$$\mathcal{S}^N(\mu_0, \dots, \mu_N) = \text{Ent}(\mu_0) + \inf_{\gamma^N \in \Pi(\mu_0, \dots, \mu_N)} \left\{ \sum_{i=0}^{N-1} (H(\gamma_{i,i+1}^N|\tilde{R}_{i,i+1}^N) - H(\mu_i|\tilde{R}_i^N)) \right\}$$

Now we observe that

$$\begin{aligned} R_{i,i+1}^N(dx_i dx_{i+1}) &= dx_i R_{i,i+1}^N(dx_{i+1}|x_i), \\ \tilde{R}_{i,i+1}^N(dx_i dx_{i+1}) &= \tilde{R}_i^N(x_i) dx_i R_{i,i+1}^N(dx_{i+1}|x_i) \end{aligned}$$

with \tilde{R}_i^N being Gaussian so that $\log(\tilde{R}_i^N) \in L^1(\mu_i)$, we deduce

$$\begin{aligned} H(\gamma_{i,i+1}^N | \tilde{R}_{i,i+1}^N) - H(\mu_i | \tilde{R}_i) &= H(\gamma_{i,i+1}^N | R_{i,i+1}^N) - \int_{\mathbb{R}^d} \log(\tilde{R}_i^N) \mu_i \\ &\quad - \text{Ent}(\mu_i) + \int_{\mathbb{R}^d} \log(\tilde{R}_i^N) \mu_i \\ &= H(\gamma_{i,i+1}^N | R_{i,i+1}^N) - \text{Ent}(\mu_i). \end{aligned}$$

Hence

$$\begin{aligned} \mathcal{S}^N(\mu_0, \dots, \mu_N) &= \text{Ent}(\mu_0) + \sum_{i=0}^{N-1} \left(\inf_{\gamma \in \Pi(\mu_i, \mu_{i+1})} H(\gamma | R_{i,i+1}^N) - \text{Ent}(\mu_i) \right) \\ &= \sum_{i=0}^{N-1} S_{\frac{T}{N}}(\mu_i, \mu_{i+1}) - \sum_{i=1}^{N-1} \text{Ent}(\mu_i) \end{aligned}$$

the second identity in the Lemma then directly follows from the first one and (2.8). \square

4 Γ -convergence and equivalence

4.1 Γ -convergence

We state now some lemmas which will be useful for the proof of the Γ -convergence result, stated in Theorem 4.3.

Lemma 4.1. *Let $\{\rho_t\}_{0 \leq t \leq T}$ be a curve of probability measures such that $\partial_t \rho_t + \nabla \cdot (v_t \rho_t) = \frac{1}{2} \Delta \rho_t$ with $\int_0^T \int_{\mathbb{R}^d} |v_t|^2 d\rho_t = E < \infty$. Let us suppose also that $\int_{\mathbb{R}^d} |x|^2 d\rho_0 = c_0 < \infty$ is finite. Then we have:*

(i) $\int |x|^2 d\rho_t \leq C(T, c_0, E)$ for all $0 \leq t \leq T$.

(ii) $\text{Ent}(\rho_t) \in L^\infty(\tau, T)$ for all $\tau > 0$.

(iii) $I(\rho_t) \in L^1(\tau, T)$ and $\text{Ent}(\rho_t) \in W^{1,1}(\tau, T)$ for all $\tau > 0$.

(iv) $\iint_{\tau}^T |v_t|^2 d\rho_t = \iint_{\tau}^T |w_t|^2 d\rho_t + \frac{1}{4} \int_{\tau}^T I(\rho_t) dt + (\text{Ent}(\rho_T) - \text{Ent}(\rho_\tau))$, where $w_t = v_t - \frac{1}{2} \nabla \log(\rho_t)$.

(v) $\mathcal{W}_2^2(\rho_\tau, \rho_T) \leq (T - \tau)(E + (\text{Ent}(\rho_\tau) - \text{Ent}(\rho_T)))$. In particular we have that $\rho_t \in H^1([\tau, T]; (\mathcal{P}_2(\mathbb{R}^d), \mathcal{W}_2))$.

Moreover if we add the assumption $\text{Ent}(\rho_0) < \infty$ we can take also $\tau = 0$ in (ii), (iii), (iv) and (v).

Proof. Let us take $\delta > 0$ and let us consider $\rho_t^\delta = \eta_\delta * \rho_t$ a convolution with a C^∞ (and everywhere strictly positive) kernel $\eta_\delta = \eta(x/\delta)/\delta^d$ with a finite second moment. Denoting $m_t^\delta = \eta_\delta * (v_t \rho_t)$ we have that $\partial_t \rho_t^\delta + \nabla \cdot (m_t^\delta) = \frac{1}{2} \Delta \rho_t^\delta$. In particular setting $v_t^\delta = m_t^\delta / \rho_t^\delta$, we have, by convexity of the function $(v, s) \mapsto \frac{|v|^2}{s}$

$$\int \int_0^T |v_t^\delta|^2 d\rho_t^\delta = \int \int_0^T \frac{|(v_t \rho_t) * \eta_\delta|^2}{\rho_t * \eta_\delta} dx \leq \int \int_0^T \frac{|v_t \rho_t|^2}{\rho_t} dx = E.$$

Moreover we can compute, letting $c_t^\delta = \int |x|^2 d\rho_t^\delta$:

$$\frac{d}{dt} c_t^\delta = 2 \int \langle x, v_t^\delta \rangle d\rho_t^\delta + 2d \leq c_t^\delta + \int |v_t^\delta|^2 d\rho_t^\delta + 2d$$

$$\frac{d}{dt} (c_t^\delta e^{-t}) \leq e^{-t} \left(\int |v_t^\delta|^2 d\rho_t^\delta + 2d \right) \leq \int |v_t^\delta|^2 d\rho_t^\delta + 2d.$$

So we get

$$c_t^\delta \leq e^t (c_0^\delta + E + 2dt) \leq e^T (c_0 + \delta^2 \int |x|^2 \eta + 2\delta (\int x d\rho_0) (\int x \eta) + E + 2dT) \quad (4.1)$$

now we can let δ to 0 to obtain (i). Moreover, we can obtain a bound on the entropy. Indeed, $e^{-\pi|x|^2}$ is the density of a probability measure and so for any ρ bounded density of a probability measure with finite second moment we have:

$$\begin{aligned} 0 \leq H(\rho | e^{-\pi|x|^2}) &= \pi \int |x|^2 d\rho + \int \rho \log(\rho) dx \\ \int \rho \log(\rho) dx &\geq -\pi \int |x|^2 d\rho. \end{aligned} \quad (4.2)$$

Taking the function $f(t) = e^{-\frac{2}{d} \text{Ent}(\rho_t^\delta)}$, we have:

$$\begin{aligned}
\frac{d}{dt}f(t) &= -\frac{2f(t)}{d} \left(\int \nabla \rho_t^\delta \cdot v_t^\delta dx - \frac{1}{2} \int \frac{|\nabla \rho_t^\delta|^2}{\rho_t^\delta} dx \right) \\
&\geq -\frac{2f(t)}{d} \left(\int |v_t^\delta|^2 d\rho_t^\delta + \frac{1}{4} \int \frac{|\nabla \rho_t^\delta|^2}{\rho_t^\delta} dx - \frac{1}{2} \int \frac{|\nabla \rho_t^\delta|^2}{\rho_t^\delta} dx \right) \\
&= -\frac{2f(t)}{d} \left(\int |v_t^\delta|^2 d\rho_t^\delta - \int |\nabla \sqrt{\rho_t^\delta}|^2 dx \right) \\
&\geq \pi e - \frac{2f(t)}{d} \int |v_t^\delta|^2 d\rho_t^\delta,
\end{aligned}$$

where in the last passage we used the Log-Sobolev inequality⁴. So we can conclude $f(t) \geq \pi t e^{-\frac{2}{d} \int_0^t |v_s^\delta|^2 d\rho_s^\delta}$, that is

$$\text{Ent}(\rho_t^\delta) \leq -\frac{d}{2} \log(\pi e t) + \int \int_0^t |v_s^\delta|^2 d\rho_s^\delta.$$

This proves (ii). In order to establish (iii), we first notice that

$$\text{Ent}(\rho_r^\delta) - \text{Ent}(\rho_s^\delta) = \iint_s^r v_t^\delta \cdot \nabla \rho_t^\delta dx dt - \frac{1}{2} \iint_s^r \frac{|\nabla \rho_t^\delta|^2}{\rho_t^\delta} dx dt. \quad (4.3)$$

In particular taking $s = \tau$ and $r = T$ and using $v_t^\delta \cdot \nabla \rho_t^\delta \leq |v_t^\delta|^2 \rho_t^\delta + \frac{1}{4} \frac{|\nabla \rho_t^\delta|^2}{\rho_t^\delta}$ we get, thanks to the L^∞ bound on the entropy:

$$\frac{1}{4} \iint_\tau^T \frac{|\nabla \rho_t^\delta|^2}{\rho_t^\delta} dx dt \leq E + \text{Ent}(\rho_\tau^\delta) - \text{Ent}(\rho_T^\delta) \leq C(\tau, T, E, c_0), \quad (4.4)$$

which proves that $I(\rho_t)$ is in $L^1(\tau, T)$. Equation (4.3) also yields

$$|\text{Ent}(\rho_t^\delta) - \text{Ent}(\rho_s^\delta)| \leq \int_s^t \left(2I(\rho_t^\delta) + \frac{1}{4} \int_{\mathbb{R}^d} |v_t^\delta|^2 \rho_t^\delta \right) dt, \quad (4.5)$$

by convexity of I we have $0 \leq I(\rho_t^\delta) \leq I(\rho_t) \in L^1(\tau, T)$ and a similar convexity argument gives an integrable bound for the kinetic energy as well, hence

⁴More precisely, the optimal euclidean Logarithmic Sobolev inequality in the form

$$\text{Ent}(\rho) \leq \frac{d}{2} \log \left(\frac{2}{\pi e d} \int_{\mathbb{R}^d} |\nabla \sqrt{\rho}|^2 \right),$$

see Weisler [41].

$\text{Ent}(\rho_t) \in W^{1,1}(\tau, T)$ for every $\tau > 0$. Statements (iv) and (v) easily follow. Finally, whenever $\text{Ent}(\rho_0) < \infty$ from equation (4.4) we get immediately $I(\rho_t) \in L^1(0, T)$ and then from (4.5) we have $\text{Ent}(\rho_t) \in W^{1,1}(0, T)$. \square

Lemma 4.2. *Let μ and ν be two fixed probability measures such that $E := 2\text{FP}_T(\mu, \nu) < \infty$. Let $c_0 = \int |x|^2 d\mu < \infty$ and let us fix $T/2 \leq T' \leq 2T$. Then we have*

- (i) $\text{Ent}(\nu) \leq \text{Ent}(\mu) + E$;
- (ii) $\text{Ent}(\nu) \geq -\pi e^T(c_0 + E + 2dT)$;
- (iii) $2\text{FP}_{T'}(\mu, \nu) \leq 5E + (\text{Ent}(\mu) - \text{Ent}(\nu))$.

Proof. Inequality (i) directly follows from Lemma 4.1-(iv); (ii) is implied directly by (4.1)-(4.2) in the proof of lemma 4.1. As for the last estimate let us consider an almost minimiser (ρ_t, v_t) for the problem $\text{FP}_T(\mu, \nu)$; in particular we have $\partial\rho_t + \nabla(v_t\rho_t) = \frac{1}{2}\Delta\rho_t$ and $\iint_0^T v_t^2 d\rho_t \leq E + \delta$. Let us take $(\tilde{\rho}_t, \tilde{v}_t) = (\rho_{Tt/T'}, v_{Tt/T'})$; this curve is such that $\tilde{\rho}_{T'} = \nu$ and $\tilde{\rho}_0 = \mu$ and moreover $\partial_t\tilde{\rho}_t + \frac{T}{T'}\nabla(\tilde{v}_t\tilde{\rho}_t) = \frac{T}{2T'}\Delta\tilde{\rho}_t$ and in particular we have

$$\partial_t\tilde{\rho}_t + \nabla \cdot \left(\left(\frac{T}{T'}\tilde{v}_t + \frac{1}{2}(1 - T/T')\frac{\nabla\tilde{\rho}_t}{\tilde{\rho}_t} \right) \tilde{\rho}_t \right) = \frac{1}{2}\Delta\tilde{\rho}_t.$$

We can thus estimate

$$\begin{aligned} 2\text{FP}_{T'}(\mu, \nu) &\leq \iint_0^{T'} \left| \frac{T}{T'}\tilde{v}_t + \frac{1}{2}(1 - T/T')\frac{\nabla\tilde{\rho}_t}{\tilde{\rho}_t} \right|^2 d\tilde{\rho}_t dt \\ &\leq 2 \iint_0^{T'} \frac{T^2}{T'^2} |\tilde{v}_t|^2 d\tilde{\rho}_t + 2 \left(1 - \frac{T}{T'}\right)^2 \iint_0^{T'} \frac{1}{4} \frac{|\nabla\tilde{\rho}_t|^2}{\tilde{\rho}_t} dx dt \\ &\leq \frac{2T}{T'}(E + \delta) + \frac{2T'}{T} \left(1 - \frac{T}{T'}\right)^2 \int_0^T \frac{1}{4} I(\rho_t) dt \\ &\leq \frac{2T}{T'}(E + \delta) + \frac{2T'}{T} \left(1 - \frac{T}{T'}\right)^2 (E + \delta + \text{Ent}(\mu) - \text{Ent}(\nu)) \\ &\leq 5(E + \delta) + (\text{Ent}(\mu) - \text{Ent}(\nu)). \end{aligned}$$

In the last two inequalities we used the estimates on $\int I(\rho_t)$ given by lemma 4.1-(iv) and then the fact that $T'/T \in [1/2, 2]$ which is easily seen to imply that $\frac{2T'}{T}(1 - \frac{T}{T'})^2 \leq 1$. Letting $\delta \rightarrow 0$ we thus obtain (iii). \square

We now fix the initial condition ρ_0 such that

$$\rho_0 \in \mathcal{P}_2(\mathbb{R}^d), \text{Ent}(\rho_0) < +\infty, \quad (4.6)$$

and define

$$\mathcal{A}_{\rho_0} := \{\mu \in C([0, T], (\mathcal{P}_2(\mathbb{R}^d), \mathcal{W}_2)) : \mu_0 = \rho_0\} \quad (4.7)$$

and its discretization

$$\mathcal{A}_{\rho_0}^N := \{\mu^N := (\mu_0^N, \dots, \mu_N^N) \in \mathcal{P}_2(\mathbb{R}^d)^{N+1}, \mu_0 = \rho_0\}. \quad (4.8)$$

Given $\mu^N \in \mathcal{A}_{\rho_0}^N$, it will be convenient to extend it in a piecewise constant way as

$$\tilde{\mu}_t^N := \mu_k^N, \quad t \in \left(\frac{(k-1)T}{N}, \frac{kT}{N} \right], \quad k = 1, \dots, N, \quad \tilde{\mu}_0^N := \mu_0^N = \rho_0. \quad (4.9)$$

By construction, we have

$$\mathcal{C}^N(\mu^N) = \int_0^{T-T/N} F(\tilde{\mu}_s^N) ds + G(\tilde{\mu}_T^N).$$

We will say that a sequence $\mu^N \in \mathcal{A}_{\rho_0}^N$ converges to a curve of measures $\mu \in \mathcal{A}_{\rho_0}$ whenever

$$\lim_{N \rightarrow \infty} \sup_{t \in [0, T]} \mathcal{W}_2(\tilde{\mu}_t^N, \mu_t) = 0. \quad (4.10)$$

For further use, let us point out that if $\mathcal{E}^N(\mu^N)$ is bounded, it follows from Lemmas 4.1-4.2 and a refined version of Ascoli-Arzelà's theorem (see [5] chapter 3) that (up to a subsequence), μ^N may be assumed to converge (in the sense of (4.10)) to some $\mu \in \mathcal{A}_{\rho_0}$. Thanks to Lemmas 4.1, we have uniform (in t and N) bounds on second moments and entropy of $\tilde{\mu}_t^N$ hence we may also assume that $\tilde{\mu}^N$ converges to μ weakly in $L^1((0, T) \times \mathbb{R}^d)$ and also that $\tilde{\mu}_T^N$ converges weakly in $L^1(\mathbb{R}^d)$ to μ_T .

Theorem 4.3. *The sequence of functionals $\mathcal{E}^N + \mathcal{C}^N : \mathcal{A}_{\rho_0}^N \rightarrow \mathbb{R}_+ \cup \{+\infty\}$ Γ -converges to the functional $\mathcal{E} + \mathcal{C} : \mathcal{A}_{\rho_0} \rightarrow \mathbb{R}_+ \cup \{+\infty\}$ as $N \rightarrow \infty$.*

Proof. Let us start with the Γ -liminf inequality. Let $\mu^N \in \mathcal{A}_{\rho_0}^N$ converge (in the sense of (4.10)) to $\mu \in \mathcal{A}_{\rho_0}$ and assume that $\mathcal{E}^N(\mu^N) + \mathcal{C}^N(\mu^N)$ is bounded (hence so is $\mathcal{E}^N(\mu^N)$). As observed above, one may assume that $\tilde{\mu}^N$ converges to μ weakly in $L^1(0, T) \times \mathbb{R}^d$ and also that $\tilde{\mu}_T^N$ converges weakly in $L^1(\times \mathbb{R}^d)$ to μ_T . In the terminal term $G(\tilde{\mu}_T^N) = \int_{\mathbb{R}^d} L_G(\tilde{\mu}_T^N(x)) dx + G_2(\tilde{\mu}_T^N)$, we have

the sum of a convex nonnegative integral term, which is then weakly l.s.c. in $L^1(\mathbb{R}^d)$, and a term, $G_2(\tilde{\mu}_T^N)$, which is continuous for \mathcal{W}_2 , so that

$$\liminf_N G(\tilde{\mu}_T^N) \geq G(\mu_T). \quad (4.11)$$

Fix $\varepsilon > 0$ and let $N > T\varepsilon^{-1}$, by Fatou's Lemma, the non-negativity of $F = F_1 + F_2$ and invoking the same weak L^1 lower-semi continuity argument as above (but with respect to both variables t and x), we get

$$\liminf_N \int_0^{T-T/N} \left(\int_{\mathbb{R}^d} L_F(\tilde{\mu}_s^N) dx + F_2(\tilde{\mu}_s^N) \right) ds \geq \int_0^{T-\varepsilon} F(\mu_s) ds$$

letting $\varepsilon \rightarrow 0$ and recalling (4.11), we deduce

$$\liminf_N \mathcal{C}^N(\mu^N) \geq \mathcal{C}(\mu). \quad (4.12)$$

For the energy term, we consider $m_t^N := \tilde{\mu}_t^N v_t^N$, an almost minimizer for $\mathcal{E}^N(\mu^N)$ i.e. $\partial_t \tilde{\mu}_t^N - \frac{1}{2} \Delta \tilde{\mu}_t^N + \operatorname{div}(m_t^N) = 0$ and

$$\mathcal{E}^N(\mu^N) \geq \frac{1}{2} \int_0^T \int_{\mathbb{R}^d} \frac{|m_t^N|^2}{\tilde{\mu}_t^N} - \frac{1}{N}. \quad (4.13)$$

By Young's inequality and the bound on $\mathcal{E}^N(\mu^N)$, one deduces a bound on the total variation (in t and x) of m^N from which (up to a further extraction) one may assume that for every $R > 0$, m^N converges weakly $*$ to some vector-valued measure m on $[0, T] \times B_R$, where m satisfies $\partial_t \mu_t - \frac{1}{2} \Delta \mu_t + \operatorname{div}(m_t) = 0$. By a well known lower semi-continuity property of convex functionals of measures (see Theorem 2.34 in [4]) which applies to the Benamou-Brenier functional, we have

$$\liminf_N \mathcal{E}^N(\mu^N) \geq \frac{1}{2} \int_0^T \int_{B_R} \frac{|m|^2}{\mu}.$$

Letting $R \rightarrow \infty$ we deduce that $m = \mu v$ and $\int_0^T \int_{\mathbb{R}^d} |v_t|^2 d\mu_t dt < +\infty$ so that

$$\liminf_N \mathcal{E}^N(\mu^N) \geq \frac{1}{2} \int_0^T \int_{\mathbb{R}^d} |v_t|^2 d\mu_t dt \geq \mathcal{E}(\mu).$$

Combining it with (4.12) we obtain the desired Γ -liminf inequality.

For the Γ -limsup inequality we will do a smoothing construction in order to deal with the nonlinear term F . For $\delta \in [1/2, 3/2]$, let us consider the time reparametrization $\phi_{\delta, N}$ defined by $\phi_{\delta, N}(0) = 0$ and

$$\phi'_{\delta, N}(t) = \begin{cases} \delta & \text{if } 0 \leq t \leq T/N \\ 1 & \text{if } T/N \leq t \leq T - T/N \\ 2 - \delta & \text{if } T - T/N \leq t \leq T \end{cases}.$$

Notice in particular, that, if $\frac{1}{2} \leq \delta \leq \frac{3}{2}$, then

$$\frac{1}{2}(t-s) \leq \phi_{\delta,N}(t) - \phi_{\delta,N}(s) \leq 2(t-s), \quad |\phi_{\delta,N}(t) - t| \leq \frac{T}{2N}, \quad \forall 0 \leq s \leq t \leq T. \quad (4.14)$$

Let $\mu \in \mathcal{A}_{\rho_0}$ be such that $\mathcal{E}(\mu) + \mathcal{C}(\mu) < +\infty$ (otherwise there is nothing to prove). We then define

$$\tilde{\rho}_t^N = \int_{1/2}^{3/2} \mu_{\phi_{\delta,N}(t)} d\delta.$$

In particular it is worthwhile to notice that

$$\tilde{\rho}_t^N = \frac{N}{T} \int_{t-\frac{T}{2N}}^{t+\frac{T}{2N}} \mu_s ds \quad \text{if } T/N \leq t \leq T - T/N. \quad (4.15)$$

Our recovery sequence will be then $\mu_k^N = \tilde{\rho}_{kT/N}^N$, $k = 0, \dots, N$. Notice that μ^N converges to μ thanks to (4.14) and the fact that the curve $t \in [0, T] \mapsto \mu_t$ is $C^{0,1/2}$ with respect to \mathcal{W}_2 as a consequence of Lemma 4.1. By construction, $\mu_N^N = \mu_T$, so the convergence of the terminal term G is trivial. The convergence of the discretization of F_2 then follows directly from its continuity in the Wasserstein metric and Lebesgue's dominated convergence theorem. For the integral term F_1 , we use equation (4.15), the convexity and the non-negativity of F_1 to conclude that

$$\begin{aligned} \frac{T}{N} \sum_{k=1}^{N-1} F_1(\mu_k^N) &\leq \frac{T}{N} \sum_{k=1}^{N-1} \frac{N}{T} \int_{\frac{kT}{N}-\frac{T}{2N}}^{\frac{kT}{N}+\frac{T}{2N}} F_1(\mu_s) ds \\ &= \int_{\frac{T}{2N}}^{T-\frac{T}{2N}} F_1(\mu_s) ds \leq \int_0^T F_1(\mu_s) ds \end{aligned}$$

hence

$$\limsup_{N \rightarrow \infty} \mathcal{C}^N(\mu^N) \leq \mathcal{C}(\mu). \quad (4.16)$$

For the energy part, we first use the convexity of $\text{FP}_{\frac{T}{N}}$ and the representation of $\tilde{\rho}_t^N$ to get that for $1 \leq k \leq N-2$

$$\text{FP}_{\frac{T}{N}}(\mu_k^N, \mu_{k+1}^N) \leq \frac{N}{T} \int_{kT/N-T/2N}^{kT/N+T/2N} \text{FP}_{\frac{T}{N}}(\mu_s, \mu_{s+T/N}) ds.$$

Now we take v an optimal vector field for $\mathcal{E}(\mu)$ (existence can be obtained by classical arguments, indeed, taking $m = \mu v$ as new unknown, this is a

convex minimization problem with a linear constraint). By construction, we then have $\text{FP}_{\frac{T}{N}}(\mu_s, \mu_{s+T/N}) \leq \frac{1}{2} \int_s^{s+T/N} \int_{\mathbb{R}^d} |v_t|^2 d\mu_t dt$. So, summing up over k we get

$$\begin{aligned} \sum_{k=1}^{N-2} \text{FP}_{\frac{T}{N}}(\mu_k^N, \mu_{k+1}^N) &\leq \frac{N}{T} \sum_{k=1}^{N-2} \int_{kT/N-T/2N}^{kT/N+T/2N} \int_s^{s+T/N} \frac{1}{2} \int_{\mathbb{R}^d} |v_t|^2 d\mu_t dt ds \\ &\leq \int_{T/2N}^{T-T/2N} \frac{1}{2} \int_{\mathbb{R}^d} |v_t|^2 d\mu_t dt \leq \mathcal{E}(\mu) \end{aligned}$$

For the last pieces, we use again the convexity of $\text{FP}_{\frac{T}{N}}$, the definition of $\mu_1^N = \int_{1/2}^{3/2} \mu_{st/N} ds$ and Lemma 4.2 (iii) to get

$$\begin{aligned} \text{FP}_{\frac{T}{N}}(\mu_0^N, \mu_1^N) &= \text{FP}_{\frac{T}{N}}(\rho_0, \mu_1^N) \\ &\leq \int_{1/2}^{3/2} \text{FP}_{\frac{T}{N}}(\rho_0, \mu_{sT/N}) ds \\ &\leq 5 \int_{1/2}^{3/2} \text{FP}_{\frac{sT}{N}}(\rho_0, \mu_{sT/N}) ds + \frac{1}{2} \int_{1/2}^{3/2} \text{Ent}(\rho_0) - \text{Ent}(\mu_{sT/N}) ds \\ &\leq 5 \int_0^{\frac{3T}{2N}} \int_{\mathbb{R}^d} |v_t|^2 d\rho_t dt + \frac{1}{2} \int_{1/2}^{3/2} \text{Ent}(\rho_0) - \text{Ent}(\mu_{sT/N}) ds \end{aligned}$$

But now the first term is converging to zero as $N \rightarrow \infty$ and the second term as well thanks to the uniform continuity of $t \mapsto \text{Ent}(\mu_t)$ (proven in Lemma 4.1 (iii)). In a similar way, we can also prove that $\text{FP}_{\frac{T}{N}}(\mu_{N-1}^N, \mu_N^N) \rightarrow 0$ thus completing the proof that

$$\limsup_{N \rightarrow \infty} \mathcal{E}^N(\mu^N) \leq \mathcal{E}(\mu)$$

which, together with (4.16), gives the desired Γ -limsup inequality for the recovery sequence μ^N . □

Remark 4.4. For the sake of simplicity, we have taken a continuous local part L_F but it is clear from the proof of Theorem 4.3 that our results extend to the case where there is an additional pointwise closed and convex state constraint on the density, for instance a hard congestion constraint such as $\rho \leq M$ where M is a prescribed saturation threshold (a case we will actually consider in our numerical simulations in section 5). It also goes without saying that allowing F and G to depend on x does not create extra difficulties neither.

In particular, when $F = G = 0$, we have

Corollary 4.5. *The sequence of functionals $\mathcal{E}^N: \mathcal{A}_{\rho_0}^N \rightarrow \mathbb{R}_+ \cup \{+\infty\}$ Γ -converges to the functional $\mathcal{E}: \mathcal{A}_{\rho_0} \rightarrow \mathbb{R}_+ \cup \{+\infty\}$ as $N \rightarrow \infty$.*

4.2 Equivalence

Our aim now is to show that thanks to Theorem 4.3, we have a continuous in time counterpart of the formulas of Corollary 3.5. This will enable us to deduce that (2.11) can be equivalently rewritten as an entropy minimization problem. We first need a technical result:

Lemma 4.6. *Let ρ_0 satisfy (4.6), if $(Q^N)_N$ is a family in $\mathcal{P}(\Omega)$ such that $Q_0^N = \rho_0$ and $H(Q^N|R)$ is bounded then Q^N is tight. Moreover, if there exists $\mu \in \mathcal{A}_{\rho_0}$ such that $Q_{kT/N}^N = \mu_{kT/N}$ for every k and Q^N converges narrowly to Q then $Q_t = \mu_t$ for every $t \in [0, T]$.*

Proof. Let us first define the (equivalent to R) probability measure \tilde{R} on Ω by $\tilde{R}(d\omega) := e^{-\pi|\omega(0)|^2} R(d\omega)$. We then observe that

$$H(Q^N|R) = H(Q^N|\tilde{R}) - \pi \int_{\mathbb{R}^d} |x|^2 d\rho_0.$$

Since Q^N is absolutely continuous with respect to \tilde{R} , it can be identified to its Radon-Nikodym derivative \tilde{Q}^N with respect to \tilde{R} , we thus deduce from the boundedness of $H(Q^N|R)$ that \tilde{Q}^N is uniformly integrable hence admits a subsequence which converges weakly in $L^1(\tilde{R})$, the tightness claim directly follows. Let us now prove the second statement,

Since Ω is Polish and Q^N is tight, by Prokhorov Theorem, for every $\varepsilon > 0$ there exists a compact subset K_ε of Ω such that $Q^N(\Omega \setminus K_\varepsilon) \leq \varepsilon$ for every N . Now let $t \in [0, T]$ and $t_N = k_N T/N$ be such that $|t - t_N| \leq T/N$. For a given $\varphi \in C_b^0(\mathbb{R}^d)$ we then have

$$\int_{\mathbb{R}^d} \varphi d(Q_t^N - \mu_t) = \int_{\mathbb{R}^d} \varphi d((Q_t^N - Q_{t_N}^N) - (\mu_t - \mu_{t_N}))$$

the second term tends to 0 by continuity of the curve $t \mapsto \mu_t$ and we can decompose the first term as

$$\int_{K_\varepsilon} (\varphi(\omega(t)) - \varphi(\omega(t_N))) dQ^N(\omega) + \int_{\Omega \setminus K_\varepsilon} (\varphi(\omega(t)) - \varphi(\omega(t_N))) dQ^N(\omega)$$

By Ascoli-Arzelà's Theorem, K_ε is uniformly equicontinuous so that the first term tends to 0 as $N \rightarrow +\infty$ whereas the second term is less in absolute value than $2\varepsilon \|\varphi\|_\infty$. Since Q_t^N converges narrowly to Q_t this shows that $Q_t = \mu_t$. \square

As a consequence, we recover, the representation result of Dawson and Gärtner [22] (also see [24]):

Corollary 4.7. *Let ρ_0 satisfy (4.6), then we have*

$$\mathcal{S}(\mu) = \mathcal{E}(\mu) + \text{Ent}(\rho_0), \quad \forall \mu \in \mathcal{A}_{\rho_0}. \quad (4.17)$$

Proof. Let $\mu \in \mathcal{A}_{\rho_0}$ be such that $\mathcal{S}(\mu) < +\infty$, by definition of \mathcal{S}^N and \mathcal{S} and using Corollary 3.5, we have

$$\mathcal{S}(\mu) \geq \mathcal{S}^N(\mu_0, \mu_{T/N}, \dots, \mu_T) = \mathcal{E}^N(\mu_0, \mu_{T/N}, \dots, \mu_T) + \text{Ent}(\rho_0).$$

Taking the liminf and using Theorem 4.3, we get $\mathcal{S}(\mu) \geq \mathcal{E}(\mu) + \text{Ent}(\rho_0)$. Now take $\mu \in \mathcal{A}_{\rho_0}$ such that $\mathcal{E}(\mu) < +\infty$, we then have

$$\mathcal{E}(\mu) \geq \mathcal{E}^N(\mu_0, \mu_{T/N}, \dots, \mu_T) = \mathcal{S}^N(\mu_0, \mu_{T/N}, \dots, \mu_T) - \text{Ent}(\rho_0)$$

let then $Q^N \in \mathcal{P}(\Omega)$ be such that $Q_{kT/N} = \mu_{kT/N}$ for $k = 0, \dots, N$ and

$$\mathcal{S}^N(\mu_0, \mu_{T/N}, \dots, \mu_T) \geq H(Q^N|R) - \frac{1}{N}$$

passing to a subsequence if necessary, thanks to Lemma 4.6, we may assume that Q^N converges narrowly to some $Q \in \mathcal{P}(\Omega)$ such that $Q_t = \mu_t$ for every $t \in [0, T]$ so that, thanks to the weak lower semi-continuity of the entropy

$$\mathcal{E}(\mu) + \text{Ent}(\rho_0) \geq \liminf_N H(Q^N|R) \geq H(Q|R) \geq \mathcal{S}(\mu).$$

□

5 Algorithm and Numerical Results

5.1 Multi-Marginal Sinkhorn

We now introduce a numerical scheme to solve the discretized in time problem (3.7). The scheme is based on a variant of the celebrated Sinkhorn algorithm [40], already used to solve many variational problem related to optimal transport (see for instance [21, 25, 12, 11, 10, 14, 20, 36, 37]). Note that the iterative method proposed in [28] for MFGs with quadratic hamiltonians can be reinterpreted in this framework.

We recall that (3.7) reads as:

$$\inf \left\{ \mathcal{S}^N(\mu_0, \dots, \mu_N) + \frac{T}{N} \sum_{k=1}^{N-1} F(\mu_k) + G(\mu_N), \mu_i \in \mathcal{P}_2(\mathbb{R}^d), \mu_0 = \rho_0 \right\}$$

where \mathcal{S}^N is itself defined by (3.4) which is an entropy minimization with multi-marginal constraints. Denoting $\pi^k : (\mathbb{R}^d)^{N+1} \rightarrow (\mathbb{R}^d)$ the k -th canonical projection we can obviously rewrite (3.7) as an optimization problem over plans γ^N only:

$$\inf \left\{ H(\gamma^N | R^N) + i_{\rho_0}(\pi_{\#}^0 \gamma^N) + \frac{T}{N} \sum_{k=1}^{N-1} F(\pi_{\#}^k \gamma^N) + G(\pi_{\#}^N \gamma^N) : \gamma^N \in \mathcal{P}((\mathbb{R}^d)^{N+1}) \right\}, \quad (5.1)$$

where

$$i_{\rho_0}(\rho) = \begin{cases} 0 & \text{if } \rho = \rho_0 \\ +\infty & \text{otherwise} \end{cases}$$

is the indicator function in the convex analysis sense and is used to enforce the initial condition.

We recall that R^N is defined as

$$R^N := R_{0, \frac{T}{N}, \dots, T}$$

Since R is the reversible Wiener measure, R^N can be decomposed by using the heat kernel (2.4) as

$$R^N(dx_0, \dots, dx_N) := \left(\prod_{k=1}^N P_{\frac{T}{N}}(x_k - x_{k-1}) \right) dx_0 \cdots dx_N. \quad (5.2)$$

We also need to discretize in space (for example we use M grid-points to discretize \mathbb{R}^d), then γ^N and R^N become tensors in \mathbb{R}^{MN} (see remark 5.3 for a further decomposition of R^N). Under the assumption that F and G are convex, (5.1) is now a finite-dimensional strictly convex minimization⁵. In order to simplify the presentation, we will keep the continuous in space notation. Integrals must therefore be understood as finite sums and x_0, \dots, x_N as M vectors.

One can now generalise the algorithm formalized in [20, theorem 3.2] (the case $N = 1$ or two marginals) as follows. We first state without proof a classical duality result:

Proposition 5.1. *The dual problem of (5.1) is*

$$\sup_{(u_0, \dots, u_N)} -\tilde{F}^*(-u_0) - \frac{T}{N} \sum_{k=1}^{N-1} F^*(-u_k) - G^*(-u_N) - \int (\exp(\oplus_{k=0}^N u_k) - 1) R^N \quad (5.3)$$

⁵We will also allow F to contain a nonconvex but regular term given by a convolution which we will treat in a semi-implicit way as explained in paragraph 5.3.3.

where $\oplus_{k=0}^N u_k : (x_0, \dots, x_N) \mapsto u_0(x_0) + \dots + u_N(x_N)$. Strong duality holds in the sense that the minimum in (5.1) coincides with the maximum in (5.3).

Denoting by u_k^* and γ^* the optimal solutions to (5.3) and (5.1) respectively, it follows that the unique solution to (5.1) has the form

$$\gamma^*(x_0, \dots, x_N) := \left(\otimes_{k=0}^N e^{u_k^*(x_k)} \right) R^N(x_0, \dots, x_N). \quad (5.4)$$

The algorithm is obtained by relaxations of the maximizations on the dual problem (5.3). We get the iterative method computing a sequence of potentials (denoted with the superscripts $\cdot^{(n)}$):

given $N + 1$ vectors $u_k^{(0)}$ with $k = 0, \dots, N$, then the update at step n is defined as

$$\begin{cases} u_k^{(n)} := \operatorname{argmax}_u -\tilde{F}^*(-u) - \int \exp(u) I_k^u dx_1 \cdots dx_N & \text{for } k = 0, \\ u_k^{(n)} := \operatorname{argmax}_u -\frac{T}{N} F^*(-u) - \int \exp(u) I_k^u dx_0 \cdots dx_{k-1} dx_{k+1} \cdots dx_N & \text{for } k = 1, \dots, N-1, \\ u_k^{(n)} := \operatorname{argmax}_u -G^*(-u) - \int \exp(u) I_k^u dx_0 \cdots dx_{N-1} & \text{for } k = N, \end{cases} \quad (5.5)$$

where

$$I_k^u := \exp\left(\oplus_{i=0}^{k-1} u_i^{(n)}\right) \exp\left(\oplus_{i=k+1}^N u_i^{(n-1)}\right) R^N.$$

Remark 5.2 (Examples of Energies). For many interesting energies F and G , the relaxed maximizations can be computed pointwise in space and analytically. We list here a few which are tested in the numerical section.

Marginal constraint : In this case the functional F takes the form

$$F(\rho) = i_{\rho_0}(\rho).$$

Hard congestion : For the hard congestion one has

$$F(\rho) = \begin{cases} 0 & \text{if } \rho \leq \bar{\rho}, \\ +\infty & \text{otherwise.} \end{cases}$$

Potentials and Obstacles In this case $F(\rho) = \int V(t, x) \rho(x) dx$ is linear in ρ .

Obstacles correspond to

$$V(t, x) = \begin{cases} +\infty & \text{if } x \in \Omega(t), \\ 0 & \text{otherwise} \end{cases}$$

where $t \mapsto \Omega(t)$ represent one or more (possibly moving with time) bounded domains.

Remark 5.3 (Implementation). The iterations of Sinkhorn might seem tedious at a first glance because of the integration against R^N , but due to the special form of R^N (5.2), these are just series of convolution with the kernel P_t . Moreover, the heat kernel can be further decomposed along the dimension as follows

$$P_t(z) = \prod_{j=1}^d p_t(z_j)$$

where $p_t(z_j)$ is the heat kernel in dimension one. This implies that instead of storing a matrix $P_t \in \mathbb{R}^{M \times M}$ (which is already better than the full tensor R^N) one can just store d small matrices belonging to $\mathbb{R}^{\sqrt[M]{M} \times \sqrt[M]{M}}$.

5.2 Adding a viscosity parameter

It is straightforward to extend the theory and the numerical method to a slightly more general model with a viscosity parameter ε . The Mean Field Game system (1.1) now takes the form :

$$\begin{cases} -\partial_t u - \frac{\varepsilon}{2} \Delta u + \frac{1}{2} |\nabla u|^2 = f[\rho_t], & (t, x) \in (0, T) \times \mathbb{R}^d \\ \partial_t \rho - \frac{\varepsilon}{2} \Delta \rho - \operatorname{div}(\rho \nabla u) = 0, & (t, x) \in (0, T) \times \mathbb{R}^d \\ \rho|_{t=0} = \rho_0, \quad u|_{t=T} = g[\rho_T]. \end{cases} \quad (5.6)$$

The Lagrangian formulation (2.13) we have proposed becomes

$$\inf \left\{ H(Q|R_\varepsilon) + \mathcal{C}((Q_t)_{t \in [0, T]}) : Q \in \mathcal{P}(\Omega), Q_0 = \rho_0 \right\}. \quad (5.7)$$

where R_ε is the reversible Wiener measure induced by a Brownian motion with variance ε . In particular, if we discretize the problem in time, we have that the reference measure R_ε^N can be still decomposed by using the heat kernel $P_{\varepsilon t}(z)$. Notice that we can still use the algorithm we have introduced in the previous section, but the performance, in terms of iterations to converge, will be affected by small values of ε . At least formally, when the viscosity is small, (5.7) is an approximation of the following Lagrangian formulation of first-order variational mean-field games (see [13] for more details about this formulation)

$$\inf \left\{ \mathcal{K}(Q) + \mathcal{C}((Q_t)_{t \in [0, T]}) : Q \in \mathcal{P}(\Omega), Q_0 = \rho_0 \right\}, \quad (5.8)$$

where

$$\mathcal{K}(Q) := \frac{1}{2} \int_\Omega \int_0^T |\dot{\omega}(t)|^2 dt dQ(\omega). \quad (5.9)$$

This also implies that we can use the Sinkhorn algorithm, with small ε , in order to approximate the solution to first-order MFGs.

Remark 5.4 (Γ -convergence). We do not prove here Γ -convergence results as $\varepsilon \rightarrow 0$, for the time discretization, it is indeed, at least on the flat torus, a straightforward generalization of a similar result obtained in [12] for the so-called Bredinger problem.

Remark 5.5 (Numerical limitations). Denoting by h and dt respectively the space and time discretization steps, the heat kernel (2.4) used in the Sinkhorn iterations scales like $e^{-\frac{h^2}{dt\varepsilon}}$. It induces a limit to the stability of the numerical method when letting ε go to 0 or increasing, respectively decreasing, h and dt . We refer to [38] for a review of several approaches to mitigate this problem in the 2-marginal case.

5.3 Numerical Results

5.3.1 Planning MFG

We illustrate the effect of varying ε with the planning MFG problem on the torus. This correspond to $F := 0$ and $G := i_{\rho_1}$ (see remark 5.2), the characteristic function which forces, as for the initial density, the final density to match exactly a prescribed density. This problem is equivalent to the dynamic formulation of optimal transport [8] which is a first-order planning MFG with the additional expected diffusion effect linked to the second-order term.

On figure 1, for $\varepsilon = 1$, one can see the effect of the diffusion and that mass will travel across the periodic boundary. On figures 2 ($\varepsilon = 0.1$) and 3 ($\varepsilon = 0.01$), the transport gets closer to the optimal transport/first-order MFG.

5.3.2 Moving Obstacles

We now use the same planning MFG setting but add multiple obstacles moving with time (see remark 5.2). The boundaries of the obstacles are the white circles on the snapshots displayed in figures 4-6. The density is zero inside as agents pay an infinite cost to be there.

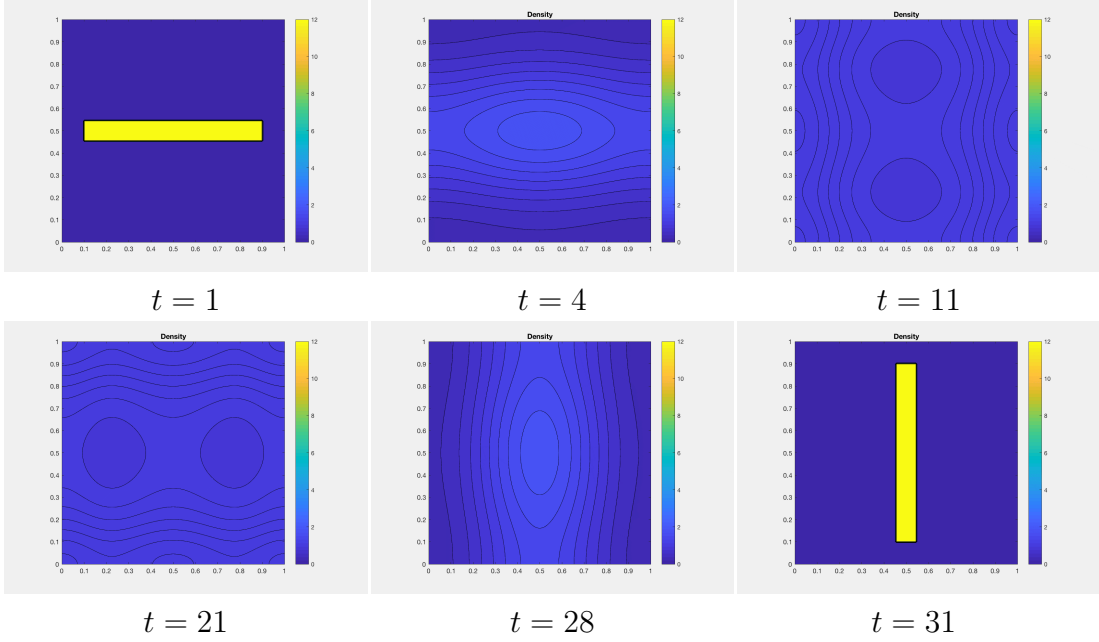


Figure 1: Planning MFG on the torus, Densities at different time steps. $\varepsilon = 1$ and 31 time steps.

5.3.3 Non local interactions

In this section, we investigate a model for which F is not convex in ρ . More precisely, the overall running cost will be of the form $F = F_1 + F_2$, with F_1 a hard congestion term preventing concentration of mass:

$$F_1(\rho) = \begin{cases} 0 & \text{if } \rho \leq 1, \\ +\infty & \text{otherwise.} \end{cases}$$

As for the F_2 term, it is given by a non local interaction functional:

$$F_2(\rho) = -\frac{1}{2} \int \int K(x-y) \rho(y) dy \rho(x) dx.$$

If the kernel is non symmetric ($K(x-y) \neq K(y-x)$) the mean field game is not variational, we only solve for a fixed point of the system.

The first kernel in (see first frame figures 7) in polar coordinates, is the tensor product of Gaussians in radius and direction. It is non symmetric and (because of the minus sign above) will favor stretching the mass in the mean direction (here 45 deg.). The initial density is prescribed and the final

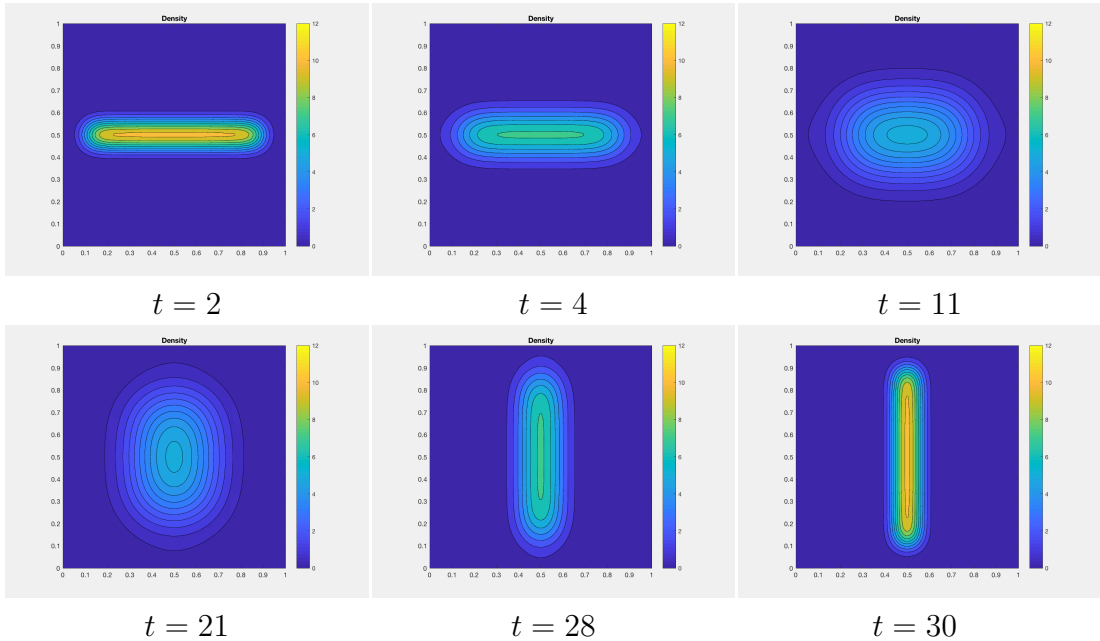


Figure 2: Planning MFG on the torus, fixed initial and final densities similar to figure 1, Densities at different time steps. $\varepsilon = 0.1$ and 31 time steps.

density is free. The kinetic energy cost penalizes displacement and the game seems to give a smooth deformation to a stationary optimal shape. The periodic boundary conditions are not active as we use a low diffusion parameter ε .

The second proposed kernel in figure 8 is the symmetrized version of the first. We now get a perfectly symmetric evolution toward a stationary shape.

From an algorithmic point of view, we are out of the domain of application of Sinkhorn (5.5). In order to solve the problem, we adopt a semi-implicit approach (see [17]). At each Sinkhorn iteration $n + 1$ we relax the non local functional as a potential linear cost using the density of the previous iteration:

$$f_2^{(n)}(x) = - \int K(x - y) \rho^{(n)}(y) dy.$$

References

- [1] Yves Achdou, Fabio Camilli, and Italo Capuzzo-Dolcetta. Mean field games: convergence of a finite difference method. *SIAM J. Numer.*

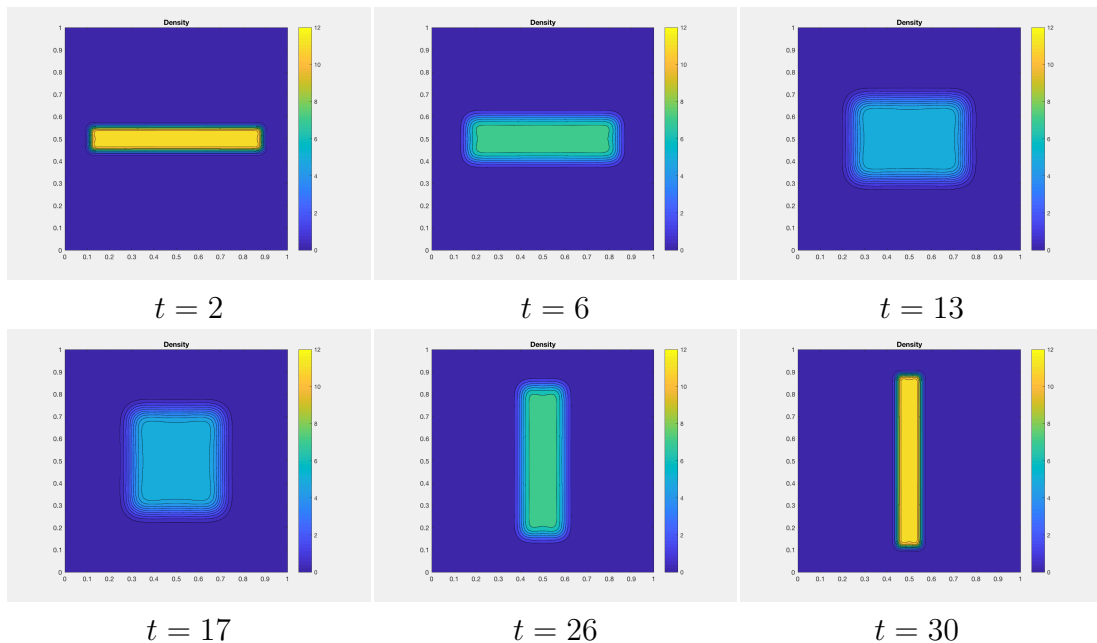


Figure 3: Planning MFG on the torus, fixed initial and final densities similar to figure 1, Densities at different time steps. $\varepsilon = 0.01$ and 31 time steps.

Anal., 51(5):2585–2612, 2013.

- [2] Yves Achdou and Italo Capuzzo-Dolcetta. Mean field games: numerical methods. *SIAM J. Numer. Anal.*, 48(3):1136–1162, 2010.
- [3] Yves Achdou and Alessio Porretta. Convergence of a finite difference scheme to weak solutions of the system of partial differential equations arising in mean field games. *SIAM J. Numer. Anal.*, 54(1):161–186, 2016.
- [4] Luigi Ambrosio, Nicola Fusco, and Diego Pallara. *Functions of bounded variation and free discontinuity problems*. Oxford Mathematical Monographs. The Clarendon Press, Oxford University Press, New York, 2000.
- [5] Luigi Ambrosio, Nicola Gigli, and Giuseppe Savaré. *Gradient flows: in metric spaces and in the space of probability measures*. Springer Science & Business Media, 2006.
- [6] Roman Andreev. Preconditioning the augmented lagrangian method for instationary mean field games with diffusion. *SIAM J. Sci. Comput.*, 39(6), 2017.

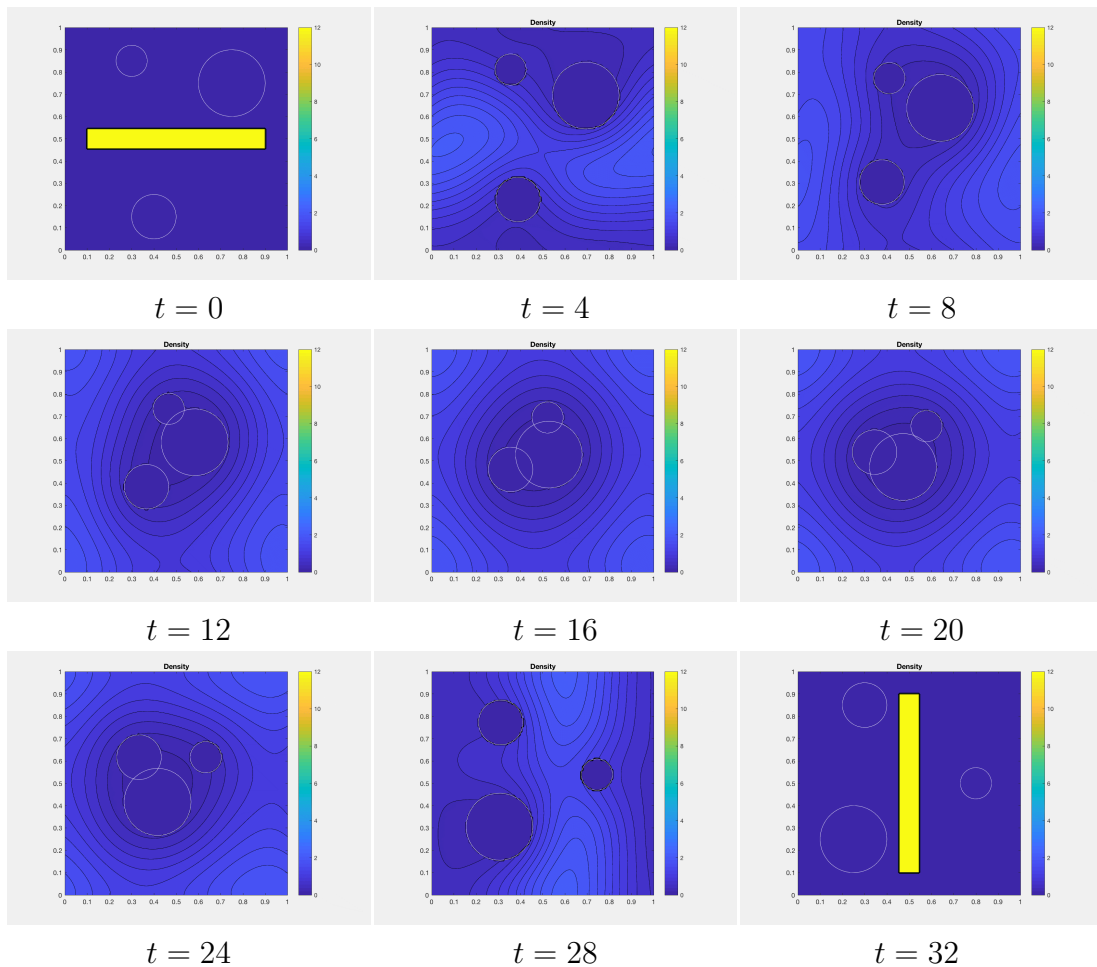


Figure 4: Planning MFG on the torus with moving obstacles, fixed initial and final densities similar to figure 1, Densities at different time steps. $\varepsilon = 1$ and 32 time steps.

- [7] Marc Arnaudon, Ana Bela Cruzeiro, Christian Léonard, and Jean-Claude Zambrini. An entropic interpolation problem for incompressible viscid fluids. *arXiv preprint arXiv:1704.02126*, 2017.
- [8] Jean-David Benamou and Yann Brenier. A computational fluid mechanics solution to the monge-kantorovich mass transfer problem. *Numerische Mathematik*, 84(3):375–393, 2000.
- [9] Jean-David Benamou and Guillaume Carlier. Augmented Lagrangian methods for transport optimization, mean field games and degenerate elliptic equations. *J. Optim. Theory Appl.*, 167(1):1–26, 2015.

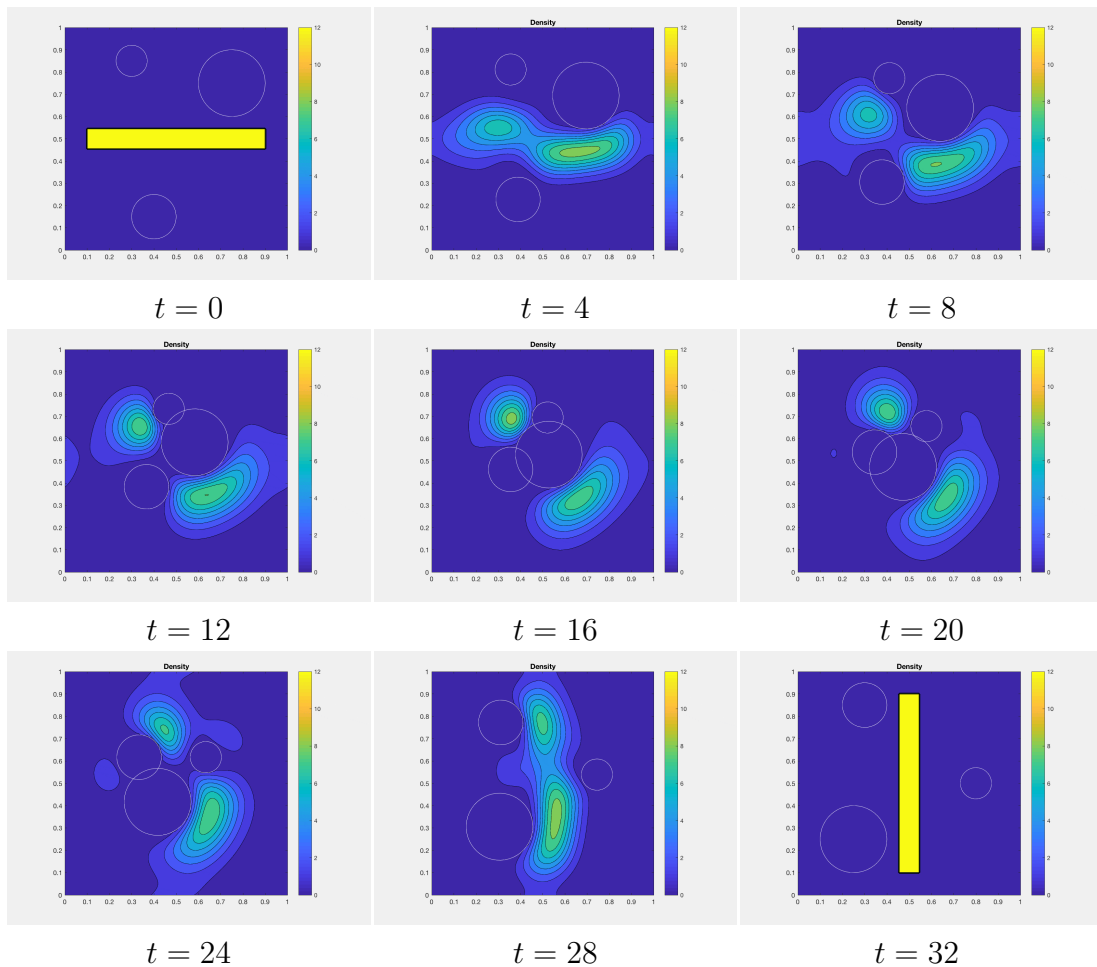


Figure 5: Planning MFG on the torus with moving obstacles, fixed initial and final densities similar to figure 1, Densities at different time steps. $\varepsilon = 0.1$ and 32 time steps.

- [10] Jean-David Benamou, Guillaume Carlier, Marco Cuturi, Luca Nenna, and Gabriel Peyré. Iterative Bregman projections for regularized transportation problems. *SIAM Journal on Scientific Computing*, 37(2):A1111–A1138, 2015.
- [11] Jean-David Benamou, Guillaume Carlier, and Luca Nenna. A numerical method to solve multi-marginal optimal transport problems with coulomb cost. In *Splitting Methods in Communication, Imaging, Science, and Engineering*, pages 577–601. Springer International Publishing, 2016.

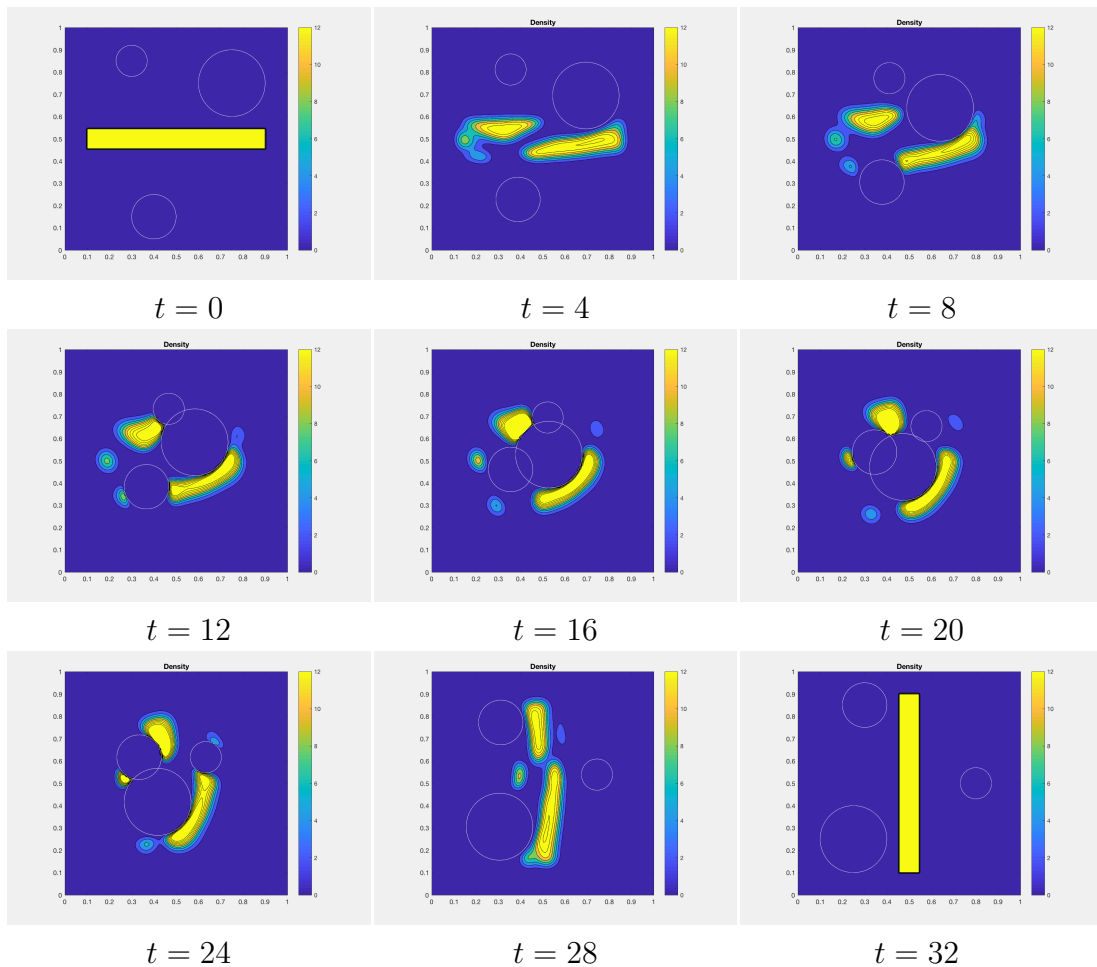


Figure 6: Planning MFG on the torus with moving obstacles, fixed initial and final densities similar to figure 1, Densities at different time steps. $\varepsilon = 0.01$ and 32 time steps.

- [12] Jean-David Benamou, Guillaume Carlier, and Luca Nenna. Generalized incompressible flows, multi-marginal transport and sinkhorn algorithm. *arXiv preprint arXiv:1710.08234*, 2017.
- [13] Jean-David Benamou, Guillaume Carlier, and Filippo Santambrogio. Variational mean field games. In *Active Particles, Volume 1*, pages 141–171. Springer, 2017.
- [14] Adrien Blanchet, Guillaume Carlier, and Luca Nenna. Computation of cournot–nash equilibria by entropic regularization. *Vietnam Journal of Mathematics*, pages 1–17, 2016.

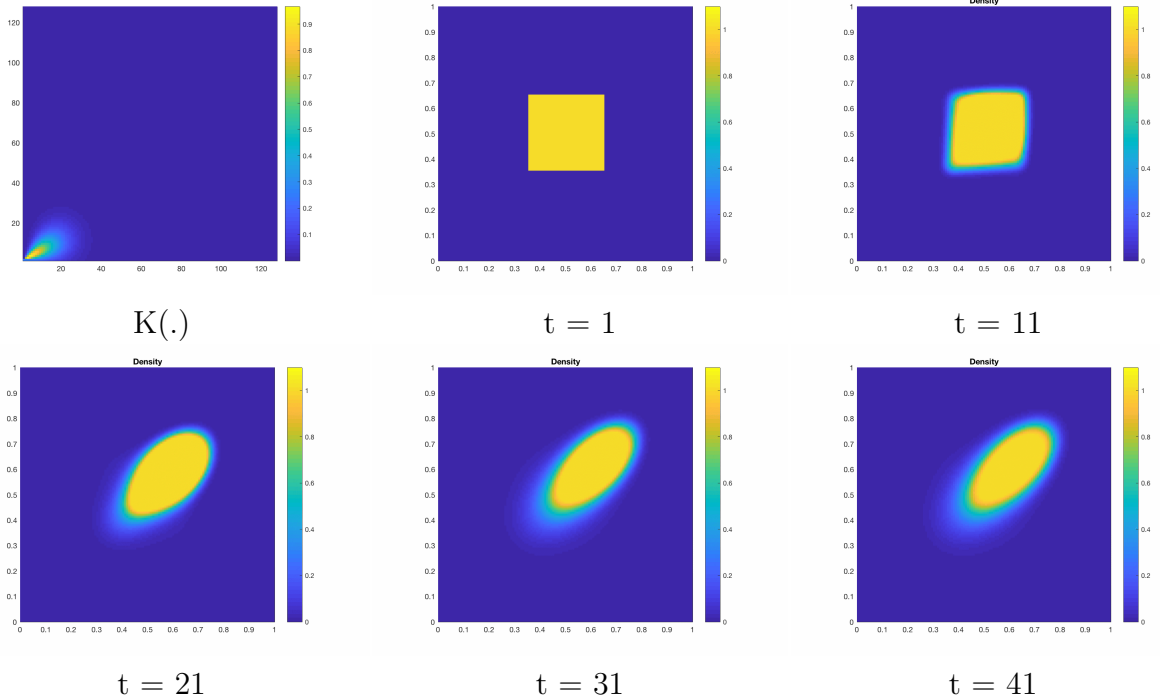


Figure 7: Non local interaction. Top left : Kernel K . Densities at different time steps. $\varepsilon = 10^{-3}$.

- [15] L. M. Briceño Arias, D. Kalise, and F. J. Silva. Proximal methods for stationary mean field games with local couplings. *SIAM J. Control Optim.*, 56(2):801–836, 2018.
- [16] Pierre Cardaliaguet, P. Jameson Graber, Alessio Porretta, and Daniela Tonon. Second order mean field games with degenerate diffusion and local coupling. *NoDEA Nonlinear Differential Equations Appl.*, 22(5):1287–1317, 2015.
- [17] Guillaume Carlier and Maxime Laborde. A splitting method for nonlinear diffusions with nonlocal, nonpotential drifts. *Nonlinear Anal.*, 150:1–18, 2017.
- [18] Patrick Cattiaux and Christian Léonard. Large deviations and Nelson processes. *Forum Math.*, 7(1):95–115, 1995.
- [19] Yongxin Chen, Tryphon T. Georgiou, and Michele Pavon. On the relation between optimal transport and Schrödinger bridges: a stochastic control viewpoint. *J. Optim. Theory Appl.*, 169(2):671–691, 2016.

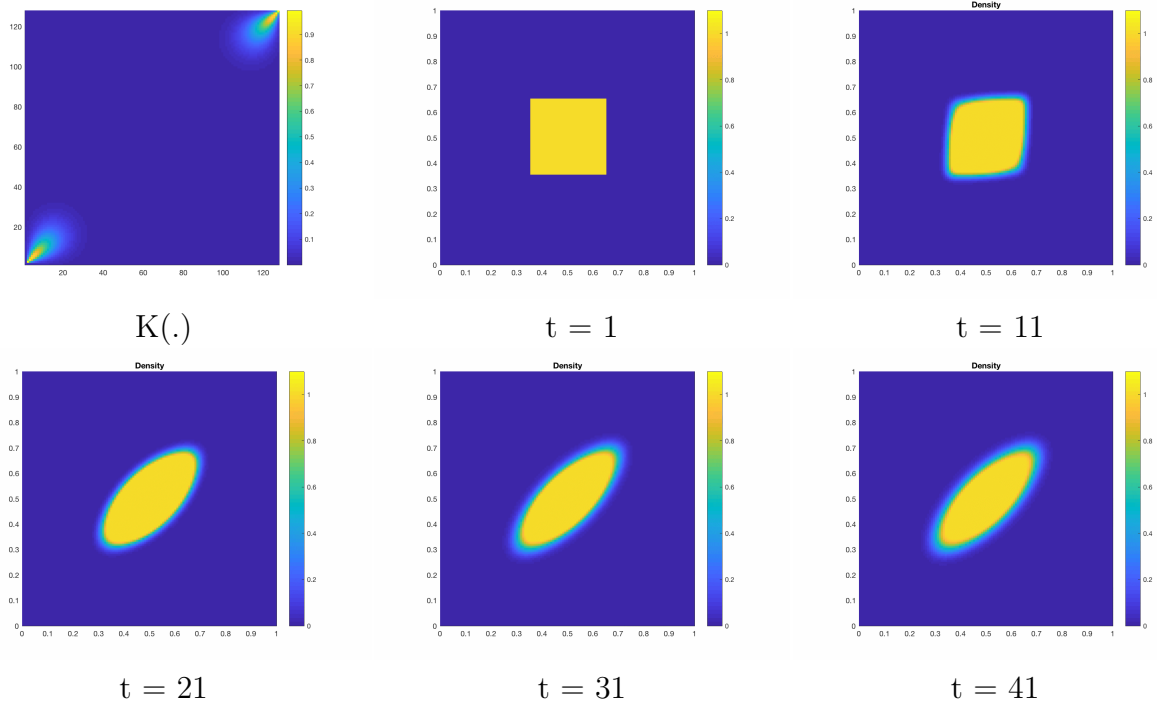


Figure 8: Non local interaction. Top left : potential K . Densities at different time steps. $\varepsilon = 10^{-3}$.

- [20] Lenaïc Chizat, Gabriel Peyré, Bernhard Schmitzer, and François-Xavier Vialard. Scaling algorithms for unbalanced transport problems. *arXiv preprint arXiv:1607.05816*, 2016.
- [21] Marco Cuturi. Sinkhorn distances: Lightspeed computation of optimal transport. In *Advances in Neural Information Processing Systems*, pages 2292–2300, 2013.
- [22] Donald A. Dawson and Jürgen Gärtner. Large deviations from the McKean-Vlasov limit for weakly interacting diffusions. *Stochastics*, 20(4):247–308, 1987.
- [23] Claude Dellacherie and Paul-André Meyer. *Probabilities and potential*, volume 29 of *North-Holland Mathematics Studies*. North-Holland Publishing Co., Amsterdam-New York; North-Holland Publishing Co., Amsterdam-New York, 1978.

- [24] Hans Föllmer. Random fields and diffusion processes. In *École d'Été de Probabilités de Saint-Flour XV–XVII, 1985–87*, volume 1362 of *Lecture Notes in Math.*, pages 101–203. Springer, Berlin, 1988.
- [25] Alfred Galichon and Bernard Salanié. Cupid's invisible hand: Social surplus and identification in matching models. 2015.
- [26] Ivan Gentil, Christian Léonard, and Luigia Ripani. About the analogy between optimal transport and minimal entropy. *Ann. Fac. Sci. Toulouse Math. (6)*, 26(3):569–601, 2017.
- [27] Nicola Gigli and Luca Tamanini. Benamou-Brenier and duality formulas for the entropic cost on $RCD^*(K, N)$ spaces, 2018.
- [28] Olivier Guéant. Mean field games equations with quadratic hamiltonian: A specific approach. *Mathematical Models and Methods in Applied Sciences*, 22(09):1250022, 2012.
- [29] Jean-Michel Lasry and Pierre-Louis Lions. Jeux à champ moyen. I. Le cas stationnaire. *C. R. Math. Acad. Sci. Paris*, 343(9):619–625, 2006.
- [30] Jean-Michel Lasry and Pierre-Louis Lions. Jeux à champ moyen. II. Horizon fini et contrôle optimal. *C. R. Math. Acad. Sci. Paris*, 343(10):679–684, 2006.
- [31] Jean-Michel Lasry and Pierre-Louis Lions. Mean field games. *Jpn. J. Math.*, 2(1):229–260, 2007.
- [32] Christian Léonard. From the Schrödinger problem to the Monge–Kantorovich problem. *Journal of Functional Analysis*, 262(4):1879–1920, 2012.
- [33] Christian Léonard. Girsanov theory under a finite entropy condition. In *Séminaire de Probabilités XLIV*, volume 2046 of *Lecture Notes in Math.*, pages 429–465. Springer, Heidelberg, 2012.
- [34] Christian Léonard. A survey of the Schrödinger problem and some of its connections with optimal transport. *Discrete Contin. Dyn. Systems, A*, 34(4):1533–1574, 2014.
- [35] Toshio Mikami. Monge's problem with a quadratic cost by the zero-noise limit of h -path processes. *Probab. Theory Related Fields*, 129(2):245–260, 2004.

- [36] Luca Nenna. *Numerical methods for multi-marginal optimal transportation*. PhD thesis, PSL Research University, 2016.
- [37] Gabriel Peyré. Entropic approximation of wasserstein gradient flows. *SIAM Journal on Imaging Sciences*, 8(4):2323–2351, 2015.
- [38] Bernhard Schmitzer. Stabilized Sparse Scaling Algorithms for Entropy Regularized Transport Problems. working paper or preprint, October 2016.
- [39] Erwin Schrödinger. *Über die umkehrung der naturgesetze*. Verlag Akademie der wissenschaften in kommission bei Walter de Gruyter u. Company, 1931.
- [40] R. Sinkhorn. Diagonal equivalence to matrices with prescribed row and column sums. *Amer. Math. Monthly*, 74:402–405, 1967.
- [41] Fred B. Weissler. Logarithmic Sobolev inequalities for the heat-diffusion semigroup. *Trans. Amer. Math. Soc.*, 237:255–269, 1978.