



**HAL**  
open science

## Non-Intrusive model coupling: A flexible way to handle local geometric and mechanical details in FEA

Mickaël Duval, Jean-Charles Passieux, Michel Salaün, Stéphane Guinard

### ► To cite this version:

Mickaël Duval, Jean-Charles Passieux, Michel Salaün, Stéphane Guinard. Non-Intrusive model coupling: A flexible way to handle local geometric and mechanical details in FEA. Joint conference on Mechanical, Design Engineering & Advanced Manufacturing, Jun 2014, Toulouse, France. pp.1-6. hal-01847447

**HAL Id: hal-01847447**

**<https://hal.science/hal-01847447>**

Submitted on 23 Jul 2018

**HAL** is a multi-disciplinary open access archive for the deposit and dissemination of scientific research documents, whether they are published or not. The documents may come from teaching and research institutions in France or abroad, or from public or private research centers.

L'archive ouverte pluridisciplinaire **HAL**, est destinée au dépôt et à la diffusion de documents scientifiques de niveau recherche, publiés ou non, émanant des établissements d'enseignement et de recherche français ou étrangers, des laboratoires publics ou privés.



## Open Archive Toulouse Archive Ouverte (OATAO)

OATAO is an open access repository that collects the work of Toulouse researchers and makes it freely available over the web where possible.

This is an author-deposited version published in: <http://oatao.univ-toulouse.fr/>  
Eprints ID: 11435

**To cite this document:** Duval , Mickaël and Passieux, Jean-Charles and Salaün, Michel and Guinard, Stéphane *Non-Intrusive model coupling: A flexible way to handle local geometric and mechanical details in FEA*. (In Press: 2014) In: Joint conference on Mechanical, Design Engineering & Advanced Manufacturing, 18 June 2014 - 20 June 2014 (Toulouse, France).

Any correspondence concerning this service should be sent to the repository administrator: [staff-oatao@inp-toulouse.fr](mailto:staff-oatao@inp-toulouse.fr)

# NON-INTRUSIVE MODEL COUPLING: A FLEXIBLE WAY TO HANDLE LOCAL GEOMETRIC AND MECHANICAL DETAILS IN FEA

M. Duval <sup>1</sup>, J.-C. Passieux <sup>1</sup>, M. Salaün <sup>1</sup>, S. Guinard <sup>2</sup>

(1) : Université de Toulouse, Institut Clément Ader, INSA/UPS/Mines Albi/ISAE – 1, rue Caroline Aigle, 31400 Toulouse, France

{mduval, passieux}@insa-toulouse.fr, michel.salaun@isae.fr

(2) : Airbus Group Innovations – BP 90112, 31703 Blagnac Cedex, France  
stephane.guinard@eads.net

**Abstract:** Computer Aided Engineering (CAE) often involves structural mechanics analysis (most of the time using the finite element method). When dealing with nonlinear complex models on large 3D structures, the computational cost becomes prohibitive. In this paper, we present the recent developments linked to an innovative computing method: non-intrusive coupling. Such a method allows to efficiently taking into account local modifications on an initial existing model in a non-intrusive way: the previously computed analysis is left unchanged. Large scale linear models can thus be easily computed, then localised nonlinear complex models can be used to pinpoint the analysis where required on the structure. After a presentation of the scientific context and a description of non-intrusive coupling methods, we will present its application to crack growth simulation and parallel structure analysis.

**Key words:** model coupling, multiscale, FEA, parallel computing, crack growth simulation

## 1- Context and industrial issues

Every time one wants to create a new mechanical object, a design cycle has to be respected, involving Computer Aided Design (CAD) and Finite Element Analysis (FEA).

When dealing with a critical part of a mechanical product, a particular attention should be paid to the FEA – and most of the time, it involves complex simulations.

This is the point we will focus on in this paper. Indeed, in order to perform a mechanical simulation, one needs both a geometrical and a mechanical model. Some cases require a complex mechanical model, and some other a detailed geometry.

The works which will be presented in this paper try to bring a solution to a recurrent FEA problem: how to compute a complex mechanical problem in a way requiring the least effort? There are two main problems which need to be addressed: geometric complexity and mechanical behavior complexity.

### 1.1 – Geometric modifications in FEA

The most direct way to perform a structural analysis *via* numerical simulation is to use the CAD model as the geometric model for the simulation. Indeed, the creation of a structure geometric model can be very time consuming. Moreover, for some critical parts, the mesh has to be certified before being used (aeronautical parts for instance).

All in all, the fact is that we cannot afford to create a new geometric model or a new mesh each time we need to perform a simulation.

Moreover, it appears that in the life cycle of a product, its geometric specifications can change (a crack can appear, some holes can be drilled). One objective of the computing method presented here is to bring a way to reuse an initial geometric model and its finite element mesh to compute structural analysis involving local details.

### 1.2 – Localised complex mechanical behaviour

Another class of complex problems involves mechanical behaviour of the structure we need to analyse. Indeed, in the field of structural analysis, two types of models have to be considered: linear and nonlinear ones. Of course, the time required to complete the analysis will depend on the type of model. The use of certain complex nonlinear models on very large structures fatally leads to considerable cost in terms of computer resources, often beyond what is currently available. The fact is that most of time, a nonlinear model is useful only on a small part of the structure (*e.g.* localised plasticity), which can be represented elsewhere with a linear model.

Again it is possible to save a lot of computation time by reusing an existing linear model (and the corresponding solution) on a full structure: a nonlinear model will thus be considered only on localised areas (see [AG1]). The objective of non-intrusive coupling is here to make us able to merge several local complex nonlinear models with a global linear one, without actually modifying this last one.

In other words, if we need to perform several analysis of a

large scale structure, the linear model will be assembled on the full structure only once, whereas the localised analysis will be performed as many times as necessary.

## 2- Model coupling method and algorithm

As said previously, the non-intrusive coupling algorithm (see [GA1]) aims to perform a structural analysis using two separate models:

- a pre-existing simple model involving the full structure, which will represent the global mechanical behaviour (linear elasticity),
- an ad-hoc complex model involving only a small part of the structure, representing the local mechanical behaviour (plasticity for example).

### 2.1 – Coupling algorithm

In this paper, a two scale finite element method is considered. We will denote with the letter  $\Omega$  the geometric domains and with the letter  $M$  the mechanical behaviour models.

Two coupled overlapping models are considered (see Fig. 1): a global one  $M = M_1 \cup M_2$  (involving the full structure  $\Omega = \Omega_1 \cup \Omega_2$ , *i.e.* including a large number of nodes) and a local one  $\tilde{M}_2$  (involving only  $\tilde{\Omega}_2$ ). Thus the global model will be treated as a coarse linear one, whereas the local one will take into account the localised (potentially nonlinear) behaviour.

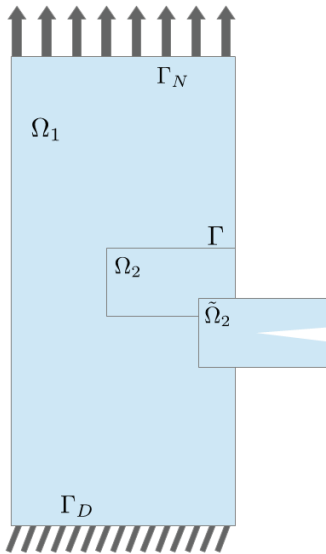


Figure 1: Non-intrusive coupling – Situation overview.

Basically, the idea is to reach the equilibrium between the global  $M_1$  and the local  $\tilde{M}_2$  models at the interface by the mean of an iterative algorithm, similar to those used in domain decomposition methods, *i.e.* solving alternately the Dirichlet (resp. Neumann) problem on the local (resp. global) model until convergence (see Fig. 2). Actually, we seek to replace the global solution from  $M_2$  (for example a non-cracked domain) on  $\Omega_2$  by the one we would get with  $\tilde{M}_2$  (for example a cracked domain).

Let us consider a domain decomposition in the linear case

involving  $\Omega_1$  and  $\Omega_2$ : we then get a monolithic coupling system (see Eq. 1).

$$\begin{bmatrix} K_1 & 0 & C_1^T \\ 0 & \tilde{K}_2 & -\tilde{C}_2^T \\ C_1 & -\tilde{C}_2 & 0 \end{bmatrix} \begin{bmatrix} U_1 \\ \tilde{U}_2 \\ \Lambda \end{bmatrix} = \begin{bmatrix} F \\ 0 \\ 0 \end{bmatrix} \quad (1)$$

Here  $K_1$  and  $\tilde{K}_2$  stands for the stiffness matrices,  $F$  for the load vector,  $U_1$  and  $\tilde{U}_2$  for the displacement fields,  $C_1$  and  $\tilde{C}_2$  for the interface coupling matrices and  $\Lambda$  for the Lagrange multipliers vector.

An iterative algorithm is then set up in order to dissociate the two models when solving the linear system (see Eq. 2).

$$\begin{bmatrix} K_1 U_1^{k+1} = F - C_1^T \Lambda^k \\ \tilde{K}_2 & -\tilde{C}_2^T \\ -\tilde{C}_2 & 0 \end{bmatrix} \begin{bmatrix} \tilde{U}_2^{k+1} \\ \Lambda^{k+1} \end{bmatrix} = \begin{bmatrix} 0 \\ -C_1 U_1^{k+1} \end{bmatrix} \quad (2)$$

Here, the non-intrusiveness of the method comes from a fictitious prolongation of the solution from  $\Omega_1$  to the full global domain  $\Omega$  (see Eq. 3 and Eq. 4). We then define  $U$  so that  $U|_{\Omega_1} = U_1$  and  $U|_{\Omega_2} = U_2$ .

$$\begin{bmatrix} KU^{k+1} = F - C_1^T \Lambda^k + K_2 U_2^k \\ \tilde{K}_2 & -\tilde{C}_2^T \\ -\tilde{C}_2 & 0 \end{bmatrix} \begin{bmatrix} \tilde{U}_2^{k+1} \\ \Lambda^{k+1} \end{bmatrix} = \begin{bmatrix} 0 \\ -C_1 U_1^{k+1} \end{bmatrix} \quad (3)$$

Actually, the iterative algorithm tends to replace the global stiffness on  $\Omega_2$  by the local one, through an additional right hand side load vector.

$$\begin{aligned} K_2 U_2 &= \mathcal{F}_{\Omega_2/\Omega_1} \\ C_1^T \Lambda &= (C_1^T \tilde{C}_2^{-T}) \tilde{K}_2 \tilde{U}_2 = \mathcal{F}_{\tilde{\Omega}_2/\Omega_1} \end{aligned} \quad (4)$$

In a few words, the global and the local models are coupled *via* displacement and effort swap at the interface. The computational cost involved by the algorithm can be significantly smaller than the one involved by a full scale nonlinear complex computation.

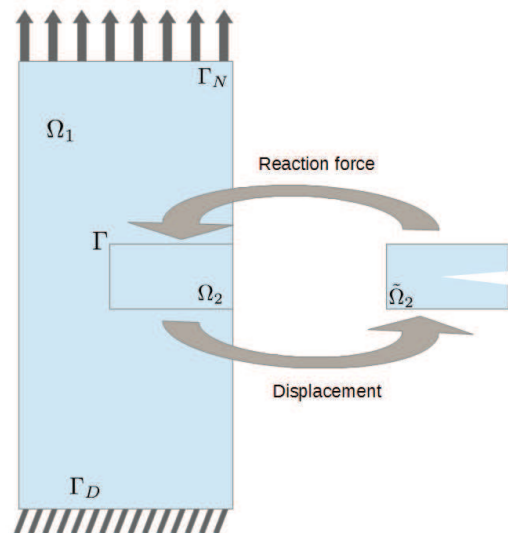


Figure 2: Iterative algorithm – Interface data exchange.

Still, it may be noted that, as such, the performance of the method is dependent on the stiffness gap between the two models  $M_2$  and  $\tilde{M}_2$ . Indeed, the more the stiffness gap is important, the more the algorithm will require a large number of iterations to converge. This is very inconvenient for crack propagation simulation: the stiffness gap increases as the crack grows. Fortunately, a Quasi-Newton correction (see [GA1]) allows to get rid of that problem: thanks to the Sherman-Morrison-Woodbury formula, it is possible to modify the tangent stiffness of the global model in a non-intrusive way (see [AG1]).

## 2.2 – Connections with standard methods

For several years, model coupling is used in nearly all the engineering departments. One can cite two main classes of method:

- First, when dealing with large mechanical structures, one often needs a very precise analysis on localised small parts. As said before, we cannot afford to use a fine mesh and a precise model on the whole structure. Instead, structural zooming is often a solution (see [DD1]).

It consists in computing a precise solution on a small area of a structure, using the pre-computed coarse solution on the full structure as boundary conditions. No iteration is applied in such methods.

- Then, one can cite domain decomposition method. These methods allow to efficiently couple models and meshes; nevertheless it requires significant efforts in order to make interconnections between the models (see *e.g.* [BR1], [BM1] and [FR1]). Moreover, no pre-computed solution can be reused, resulting on very large computing resource needs.

In fact, the non-intrusive coupling algorithm provides a generic method which allows coupling several models with the least effort, while preserving the inherent advantages of the methods presented above:

- The global pre-existing model is unmodified.
- Incompatible meshes can be interconnected *via* a mortar-like method, for example.
- Parallel resolution can reduce the computation time in case of multiple local models.

## 3- Application to crack growth simulation

The main application we focus on in this paper is crack growth simulation. For a lot of engineers, sustainability in construction (aeronautical, naval) is a priority. Indeed, during the life cycle of a mechanical structure (steel, concrete), cracks can appear, endangering the integrity of the structure. Thus, forecasting the propagation path of such cracks is a major issue for engineers. Nevertheless cracks locations cannot be known *a priori* when designing a structure or setting up a finite element mesh for initial structural analysis.

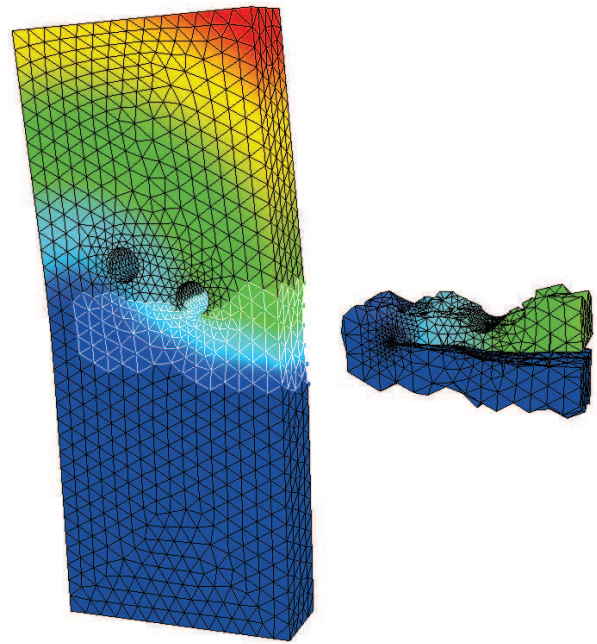
Using the common FEA tools, if one needs to simulate crack propagation, two main solutions are available:

- Set up a crack conforming mesh (see [BW1], [CR1]) at each step of the propagation. When combined to an adapted mesh refinement at crack tip, it leads to accurate results. The main drawback of conforming meshing is the substantial

computational resulting cost. For that reason, direct crack meshing is rarely used as such, unless a very fast and efficient remeshing algorithm is set up.

- Use X-FEM method (see [MD1]) on an existing mesh. Theoretically, such a method allows the mesh to be non conforming to the crack faces. Nevertheless, most of time, remeshing is necessary at crack tip if one wants to get an accurate enough solution.

All in all, common methods do not allow reuse of existing meshes without (at least local) modifications, resulting in an extra computational cost. Here, the idea is to consider two different models, standing for different scales: a global linear elastic model, representing the full structure (healthy structure) and a local (potentially nonlinear and/or XFEM) model for the cracked domain (see Fig. 3).



**Figure 3: Non-intrusive FEM/XFEM coupling.**

Using the non-intrusive algorithm for crack propagation simulation (see [GP1], [PR1]) will provide the following advantages:

- Remeshing will be necessary only on the local model.
- Nonlinear behaviour will be used only on the local model.
- The global linear model will be assembled once and the stiffness matrix will be factorised only once too.

Altogether, the non-intrusive coupling algorithm allows reusing a pre-existing mesh and linear elastic model (*i.e.* stiffness matrix) in order to perform computationally cheap crack growth simulation.

The results presented in this paper have been computed using Code\_Aster, a structural engineering software developed by Électricité de France (see [CA1]). Both global and local models have been computed as a black box using this software, whereas the coupling (*i.e.* interface data exchange) has been done using a Python code developed for that purpose.

#### 4- Parallel computing, distributed micro models

The two main features of the non-intrusive coupling algorithm are: “non-intrusive” which is the possibility to locally modify an initial model, and “coupling” which is the possibility to use different models to compute a single structure. This last feature will be developed now more in details.

Indeed, it is possible to consider several non-overlapping local models (for example if we want to represent several cracks on the same structure). Each local model will be completely independent from the others, allowing for an efficient parallel solver to be set up, using for instance MPI communications (see Fig. 4).

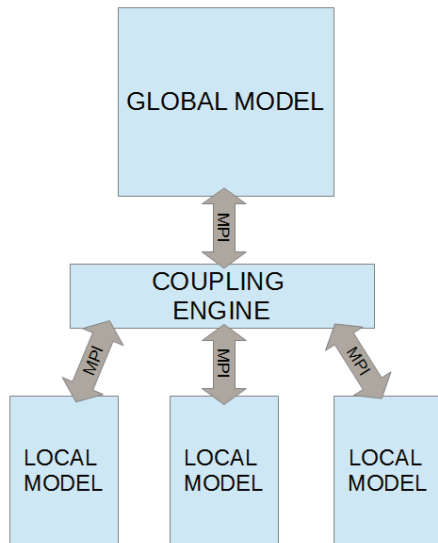


Figure 4: Non-intrusive parallel solver.

When dealing with nonlinear local models, parallelism is often the only possibility making FEA possible.

We want to draw the reader’s attention here on an important detail: unlike domain decomposition methods (e.g. FETI method, see [FR1]), each local analysis can be carried out independently from the others.

An application of this property is assemblies analysis. Indeed, for very large structures, simulation of assemblies is computationally very expensive. Moreover, if the model contains too much contact areas, it becomes difficult to make the analysis possible because of the high complexity of the nonlinear behaviour. Thanks to non-intrusive coupling, it is possible to compute each junction assembly separately: common contact algorithms will be able to perform the computation easily.

We present here another application of parallel computing applied to non-intrusive coupling: a multi-cracked plate (see Fig. 5). We consider here, as an academic test case, three disjoint cracks. From a global coarse mesh, we generate three local refined patches on which an X-FEM model is applied. For a given iteration of the coupling algorithm, the three local models are computed in parallel. The important point here is that there is no direct communication between the local patches. Every interface data exchange (displacement and effort) takes place between the global and one local model,

through a coupling engine.

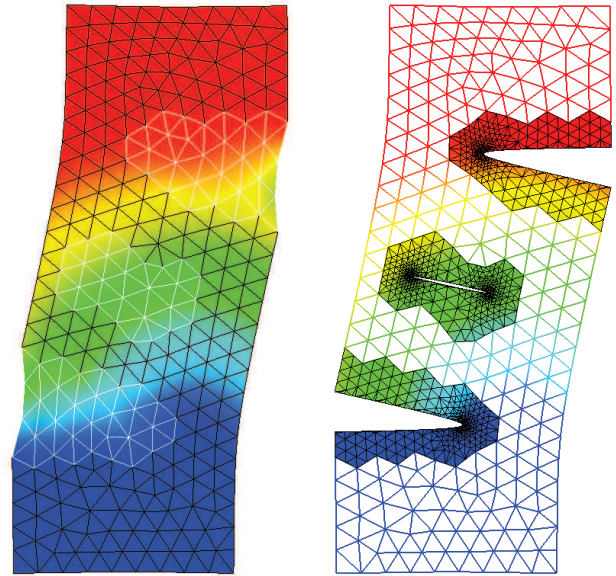


Figure 5: Multi-crack distributed patches.

It may also be noted that, in that example, no load is applied to the global model; we constrained only three degrees of freedom in order to disable rigid body motion. The only load applied is a hydrostatic pressure on the crack lips. Then, the local loading spreads to the global model only through the additional global right hand side load vector.

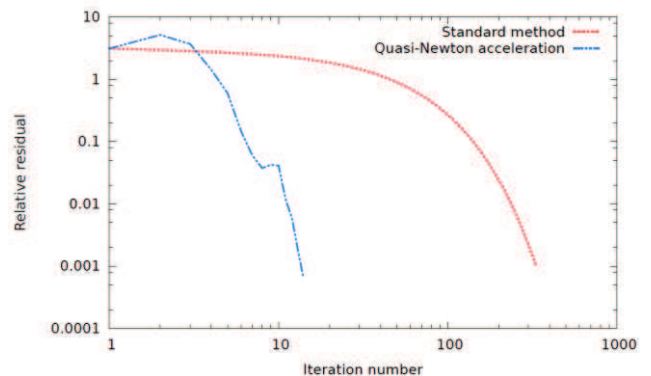


Figure 6: Convergence of the algorithm.

Moreover, the stiffness gap between the global and the local models is very important here, as we considered three cracks (two of which being emerging). Still, the Quasi-Newton method allows for an important speed-up (see Fig.6), the number of iteration dropping from about three hundreds to twelve.

#### 5- Integration of research codes into commercial softwares

Finally, the last interest of non-intrusive coupling we will develop is the possibility to easily merge research codes and commercial softwares. Indeed, as presented previously, the only data exchange occurring between the global and the local models is interface displacements and forces. Thus it is

possible to compute the global solution from a commercial software using the existing models and solvers, and compute the local solution using an ad-hoc model developed with any code. Using a MPI communication between the two codes (*i.e.* between the two models, global and local) makes the communication straightforward: we only have to focus about the data we need to exchange, as MPI will provide his own standard for language compatibility (see Fig. 7).

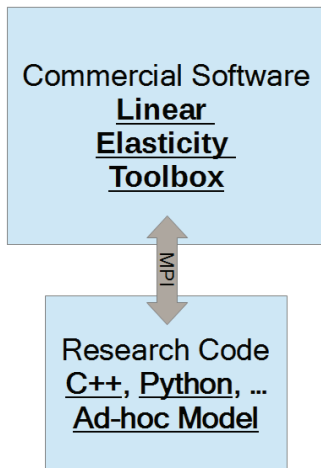


Figure 7: Commercial software - Research code integration

For instance we can cite [GA1] who compute an aeronautical structure analysis with localised plasticity within a linear model from Abaqus/Standard. If we direct our interest on crack growth simulation, we can cite [CL1] and [PR1] who propose a special treatment for crack tip displacement singular field (analytical solution, adapted radiating mesh) within an elastic linear model.

### 6- Patch definition and extend: caution

At this point, one could legitimately ask oneself on the manner the patches are defined. In fact, there is no constrain nor generic rule about the way to define the patch extend. In the crack propagation example, we simply select a given number of stitch layers from the global mesh around the crack location. Then those stitches are duplicated and saved as local mesh (see Fig. 3). Any refinement of the freshly generated local mesh is possible, particularly at crack tip.

For instance, let us consider a cracked bending plate. From a practical point of view, one can extend the patch as far as desired (see Fig. 8). Nevertheless, the patch extend is not without consequence on the algorithm convergence properties. Indeed, as said previously, the convergence speed depends on the stiffness gap between the local and the global model. In the treated example, the global model stands for a non-cracked plate whereas the local model stands for the cracked one. According to the Saint-Venant principle, the crack influence will decrease when getting far from the perturbation (the crack). Thus, the more the patch extends far from the crack, the less the stiffness gap between the global and the local model will be important, allowing for faster convergence.

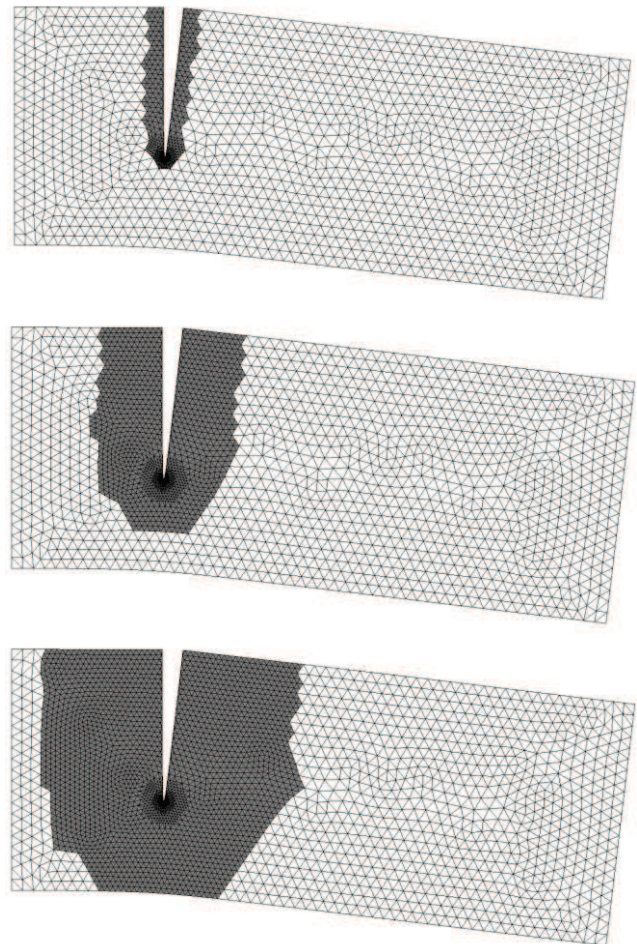


Figure 8: Cracked bending plate - Patch extend (1, 5 and 10 layers)

We plotted on Fig. 9 the number of iteration required to reach the fixed tolerance ( $\epsilon = 10^{-3}$ ) as a function of the patch thickness (*i.e.* the number of global stitches from which the patch has been generated). As predicted, the more the patch extends, the faster the algorithm converges. Without any acceleration, one can nearly divide the required number of iteration by ten, thanks to the patch extend. When using the Quasi-Newton acceleration, the same result stands for true (the number of iterations is divided only by two extending the patch from one to ten layers).

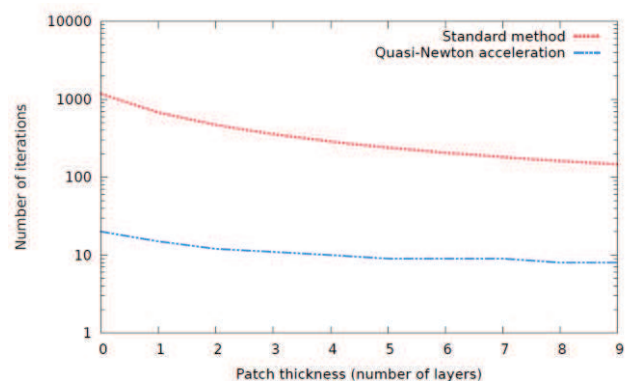


Figure 9: Patch extend – Convergence properties

Still, the more the patch extends, the more it will be computationally expensive to work out, as it will involve a larger number of degrees of freedom. Then engineers' skills must prevail in order to determine the best choice of parameters in such situations.

## 7- Conclusion and perspectives

In this paper, a non-intrusive coupling approach has been presented. This method allows to take into account local features in existing FEA models without actually modifying it. The main purpose of the method is to make FEA easier, as finite element models preparation can sometimes be more time consuming than the computation itself.

Thanks to this algorithm, we have been able to set up a two and three dimensional crack growth simulation, using Code\_Aster for the mechanical computations and MPI based communications for the interface coupling. All of the process is wrapped into a Python API. The distributed implementation of the algorithm we proposed here allows for high performance multi-patch parallel computations.

In a near future, we seek to make the method even more flexible by extending it to non-coincident patches (see [LP1]).

It may be noted that the algorithm can also be used to couple different mechanical representations (e.g. 2D/3D coupling, see [GA3]) or to couple different analysis methods (deterministic/stochastic models, see [CN1]) in a non-intrusive way.

This work is supported by the French National Research Agency (Grant ANR-12-MONU-0002 ICARE).

## 8- References

- [AG1] M. A. Akgün, J. H. Garcelon, R. T. Haftka. Fast exact linear and non-linear structural reanalysis and the Sherman-Morrison-Woodbury formulas. *International Journal for Numerical Methods in Engineering*, 50:1587-1606, 2001.
- [BR1] H. Ben Dhia, G. Rateau. The Arlequin method as a flexible engineering design tool. *International Journal for Numerical Methods in Engineering*, 62(11):1442-1462, 2005.
- [BW1] T.N. Bittencourt, P.A. Wawrzynek, A.R. Ingraffea, J.L. Sousa. Quasi-automatic simulation of crack propagation for 2D LEM problems. *Engineering Fracture Mechanics*, 55(2):321-334, 1996.
- [BM1] F. Brezzi, L.D. Marini. The three-field formulation for elasticity problems. *GAMM Mitteilungen*, 28:124-153, 2005.
- [CA1] Code\_Aster. Électricité de France. <http://www.code-aster.org/>
- [CL1] E. Chahine, P. Laborde, Y. Renard. Spider-xfem, an extended finite element variant for partially unknown crack-tip displacement. *European Journal of Computational Mechanics* 17(5-7):625-636, 2008.
- [CN1] M. Chevreuril, A. Nouy, and E. Safatly. A multiscale method with patch for the solution of stochastic partial differential equations with localized uncertainties. *Computer Methods in Applied Mechanics and Engineering*, 255:255-274, 2013.
- [CR1] V. Chiaruttini, V. Riolo, F. Feyel. Advanced remeshing techniques for complex 3D crack propagation. 13th International Conference on Fracture, Beijing, China, 2013.
- [DD1] L. Daridon, D. Dureisseix, S. Garcia, S. Pagano. Changement d'échelles et zoom structural. CSMA, 2011.
- [FR1] C. Farhat, F. X. Roux. A method of finite element tearing and interconnecting and its parallel solution algorithm, *International Journal for Numerical Methods in Engineering*, 32:1205-1227, 1991.
- [GA1] L. Gendre, O. Allix, P. Gosselet, and F. Comte. Non-intrusive and exact global/local techniques for structural problems with local plasticity. *Computational Mechanics*, 44(2):233-245, 2009.
- [GA2] P.-A. Guidalt, O. Allix, L. Champaney, J.-P. Navarro. A micro-macro approach for crack propagation with local enrichment. *Proceedings of the Seventh International Conference on Computational Structures Technology*, Lisbon, Portugal, 2004.
- [GA3] G. Guguin, G. Allix, P. Gosselet. Techniques de raccord 2D-3D pour l'analyse non-intrusive de structures composites stratifiées. CSMA 2013, 2013.
- [GP1] P. Gupta, J. Pereira, D.-J. Kim, C. Duarte, and T. Eason. Analysis of three dimensional fracture mechanics problems: A non-intrusive approach using a generalized finite element method. *Engineering Fracture Mechanics*, 90:41-64, 2012.
- [LP1] A. Lozinski, O. Pironneau. Numerical Zoom for localized multiscales. *Numerical Methods for Partial Differential Equations*, 27:197-207, 2011.
- [MD1] N. Moës, J. Dolbow, T. Belytschko. A finite element method for crack growth without remeshing. *International Journal for Numerical Methods in Engineering*, 46(1):131-150, 1999.
- [PR1] J.-C. Passieux, J. Réthoré, A. Gravouil, and M.-C. Bailetto. Local/global non-intrusive crack propagation simulation using a multigrid X-FEM solver. *Computational Mechanics*, 52(6):1381-1393, 2013.