



HAL
open science

Fire on ice and frozen trees? Inappropriate radiocarbon dating leads to unrealistic reconstructions

Walter Finsinger, Christoph Schwörer, Oliver Heiri, César Morales-Molino, Adriano Ribolini, Thomas Giesecke, Jean Nicolas Haas, Petra Kaltenrieder, Enikő Magyari, Cesare Ravazzi, et al.

► **To cite this version:**

Walter Finsinger, Christoph Schwörer, Oliver Heiri, César Morales-Molino, Adriano Ribolini, et al.. Fire on ice and frozen trees? Inappropriate radiocarbon dating leads to unrealistic reconstructions: Comment on Carcaillet & Blarquez (2017) 'Fire ecology of a tree glacial refugium on a nunatak with a view on Alpine glaciers'. *New Phytologist*, 2019, 222, pp.657-662. 10.1111/nph.15354 . hal-01844429

HAL Id: hal-01844429

<https://hal.science/hal-01844429>

Submitted on 30 Oct 2020

HAL is a multi-disciplinary open access archive for the deposit and dissemination of scientific research documents, whether they are published or not. The documents may come from teaching and research institutions in France or abroad, or from public or private research centers.

L'archive ouverte pluridisciplinaire **HAL**, est destinée au dépôt et à la diffusion de documents scientifiques de niveau recherche, publiés ou non, émanant des établissements d'enseignement et de recherche français ou étrangers, des laboratoires publics ou privés.

Letter

Fire on ice and frozen trees? Inappropriate radiocarbon dating leads to unrealistic reconstructions

Comment on Carcaillet & Blarquez (2017) 'Fire ecology of a tree glacial refugium on a nunatak with a view on Alpine glaciers'.

The questions as to where and how trees survived the Quaternary ice ages are key for understanding climate-driven range expansion processes (Clark, 1998; Giesecke *et al.*, 2017) and the influence of ice-age legacies on current mid- and high-latitude biodiversity patterns (Willis & Whittaker, 2000). Such questions have long intrigued plant ecologists, biogeographers and palaeoecologists (Bennett *et al.*, 1991; Kaltenrieder *et al.*, 2009) and have recently become the focus of combined molecular-ecological and biogeographical studies (Magri *et al.*, 2006; Wagner *et al.*, 2015).

The classic southern-refugia paradigm (van der Hammen *et al.*, 1971; Tzedakis *et al.*, 2013) postulates treeless landscapes in central Europe and at the margins of the continental and Alpine ice-sheets for the time of the Last Glacial Maximum (LGM; *c.* 23 000–19 000 calendar years before present (cal yr BP, where 0 cal yr BP = AD 1950), that is, the interval representing the most extreme conditions of the Last Glacial). Widespread cold-adapted alpine and arctic plants and boreal dwarf shrubs are documented to have occurred north of the Alps (Birks & Willis, 2008; Tzedakis *et al.*, 2013), while small populations of temperate and boreal trees persisted in southern European peninsulas (Iberia, Italy, and the Balkans) (Bennett *et al.*, 1991). Boreal and mountain conifers (e.g. *Larix decidua* Mill. and *Pinus cembra* L.) occurred at more northerly locations (up to *c.* 46°N) in eastern Europe, and grew closer to the southern margin of the Alpine and Carpathian ice-caps than temperate trees (Willis, 2000; Vescovi *et al.*, 2007; Kuneš *et al.*, 2008). This view has been challenged by the alternative interpretation that temperate plant species could have survived the LGM further north in locally favourable conditions as small populations that may be hard to detect with palaeoecological tools (e.g. Stewart & Lister, 2001; Heikkilä *et al.*, 2009; Väiliranta *et al.*, 2011).

Recently, Carcaillet & Blarquez (2017) presented evidence for the occurrence of an LGM 'tree refugium' located at *c.* 2200 m above sea level (asl) on a nunatak (a mountain top or peak emerging from or at the edge of an ice sheet or glacier) on the western flank of the European Alps. The reported presence of *L. decidua* and *P. cembra* plant macrofossils during the LGM in sediments from Lake Miroir, a site located close to modern treeline altitude (TLA), challenges the consensus on the LGM distributions of trees in

Europe. The authors further provided evidence of fire occurrence on the nunatak during the LGM, which they suggest demonstrates that 'a glacial climate does not prevent the ignition of biomass and fire spread'. Finally, they concluded that their findings support the hypothesis of western Alpine glacial refugia of *P. cembra* and *L. decidua* (Mosca *et al.*, 2012). The study uses the powerful approach of plant-macrofossil analysis (Birks & Birks, 2000) to determine the occurrence of trees in a high-alpine environment. Being located on a ridge rather than at the bottom of a cirque basin, it is possible that the LGM glacier did not cover the studied lake. Thus, this site may bear sediments older than typical Alpine glacial-cirque lakes, where organic sediment accumulation generally started not earlier than the onset of the Holocene (e.g. Tinner & Theurillat, 2003). Moreover, given the evidence for tree occurrences at elevations above glacier fronts nowadays (e.g. Lüdi, 1950), the occurrence of trees on nunataks in the past is a reasonable hypothesis. However, the hypothesis should be critically assessed because modern treeline is located significantly below the snowline (roughly the elevation of the 0°C isotherm of the warmest month), above which the ground remains snow covered throughout the year (Körner, 2003).

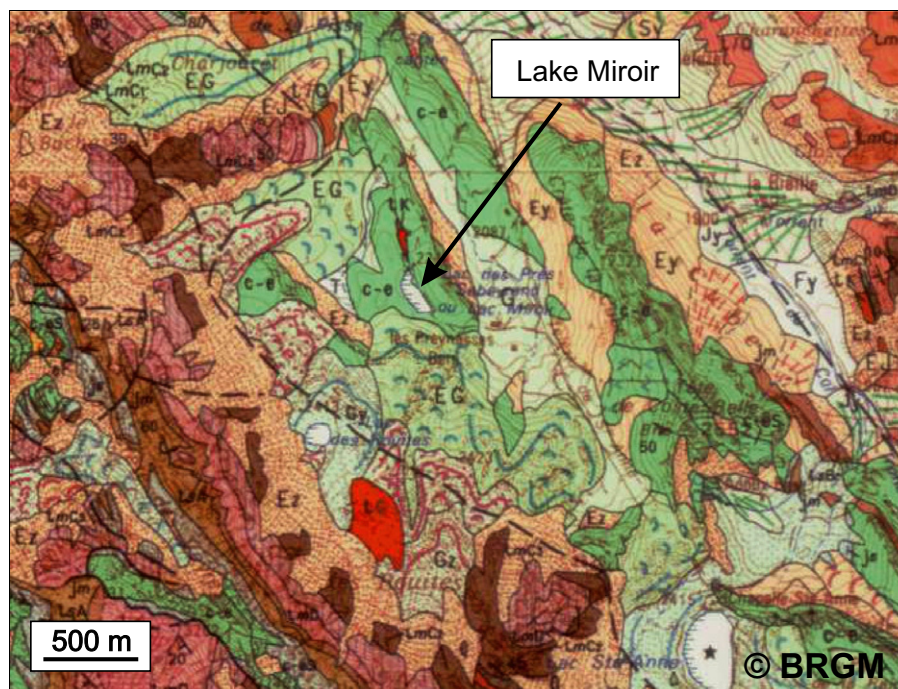
Claiming an LGM refugium on a nunatak for tree species in modern treeline environments requires strong evidence. First, the evidence for a nunatak around Lake Miroir is poorly supported because the LGM glacier-cover reconstruction referred to by Carcaillet & Blarquez (2017) is at the scale of the whole Durance-valley glacier (Cossart, 2008; Cossart *et al.*, 2012). A detailed description of local glacial/periglacial landforms (e.g. trimlines, *roches moutonnées*, erratics) around the lake would be needed to firmly constrain the existence of a nunatak. Second, historical biogeography depends on reliable age assessments of sediment sequences, and here we argue that the choice of material used for radiocarbon (¹⁴C) dating led to unsupported conclusions. To estimate the ages of sediments deposited before the Holocene, Carcaillet & Blarquez (2017) used ¹⁴C dates of total organic carbon extracted from lacustrine sediments (hereafter 'bulk dates'). There are several studies (see for instance Björck & Wohlfarth, 2001, and references cited therein) that demonstrate that in many cases bulk dates yield older ages than the actual sediment deposition time due, for instance, to (1) contamination by ¹⁴C depleted (dead) fossil carbon from pre-Quaternary sediments/bedrocks and from Quaternary glacial till (Walker *et al.*, 2001; Hågvær & Ohlson, 2013; van Mourik *et al.*, 2013), and to (2) the well-known 'hard-water reservoir effect' (Deevey *et al.*, 1954). The latter effect arises in areas with calcareous bedrock, soils, or aeolian input of carbonate-rich dust (Grimm *et al.*, 2009) because aquatic organisms take up dead carbon from dissolved carbonates and incorporate it into their tissues, thereby leading to overestimations of the sediment ages based on samples consisting entirely or partly of aquatic organic matter. While early-Holocene plant-macrofossils and bulk ¹⁴C

dates at 710–715 cm provided nearly the same ages (see table 1 in Carcaillet & Blarquez, 2017) suggesting little or no early-Holocene hard-water effects, discrepancies are expected to increase down-core in sediments with low organic content (Fowler *et al.*, 1986), because it is reasonable to assume that low organic content mostly reflects low terrestrial productivity. In down-core sequences such ages can become rapidly older with age, down to ^{14}C exhaustion, while their sequence still displays a regular, yet fatal, stratigraphic consistency. Both biases are relevant in critically assessing the chronology of the sediments analysed by Carcaillet & Blarquez (2017) because Lake Miroir is located in a catchment dominated by biogenic-limestone bedrocks (Fig. 1), which in this context is important information that was not mentioned in the article.

Because such potential biases are well known, bulk dates or dates of aquatic-plant macrofossils are usually avoided (Marty & Myrbo, 2014) or rejected (Andree *et al.*, 1986; Grimm *et al.*, 2009; Giesecke *et al.*, 2014; Hubay *et al.*, 2018), particularly if they differ from those expected according to other sources of information. The justification given by Carcaillet & Blarquez (2017) for using bulk

dates is weak, especially because conifer needles were found in the lower part of the Lake Miroir sediment core. Using a different sampling device able to retrieve larger sediment volume, or taking repeated parallel cores would have significantly increased the chance of finding sufficient terrestrial plant-macrofossils for AMS ^{14}C dating (Tinner & Theurillat, 2003). Alternatively, the chronology could have been supported with other dating methods such as, for instance, tephrochronology (Lane *et al.*, 2012) or by applying pollen-biostratigraphical marker horizons to detect well-known regional vegetation changes during the Lateglacial (*c.* 14 700–11 650 cal yr BP, where 0 cal yr BP = AD 1950; Magyari *et al.*, 2012; Giesecke *et al.*, 2014; Heiri *et al.*, 2014).

Here, we provide an alternative interpretation of the results based on available geomorphological and palaeoecological data. The modern equilibrium-line altitude (ELA), which broadly coincides with the snow line altitude and separates the zones of net accumulation and net ablation on glaciers (Bakke & Nesje, 2011), is located at *c.* 3000 \pm 200 m asl in the western Alps (Cossart *et al.*, 2012; Rabatel *et al.*, 2013; Fig. 2a). The LGM-to-modern ELA rise



Legend (selected symbols only)

- | | |
|-------|--|
| Ez | Gravitational mass-movement deposits: talus |
| EG | Glacial and periglacial deposits: active and inactive rock glaciers |
| EG | Glacial and periglacial deposits: Würm |
| c-e | Limestone (' <i>Calcaires planctoniques</i> ' upper Cretaceous-Eocene) |
| tG(b) | Gypsum (' <i>Trias carbonaté</i> ') |
| tmC-D | Limestones and dolomites (' <i>Trias carbonaté</i> ') |

Fig. 1 Excerpt from the geological map of France (no. 871, scale 1/50 000) showing the bedrock geology and surface deposits around Lake Miroir ('Lac Miroir' in French; Kerckhove *et al.*, 2005).

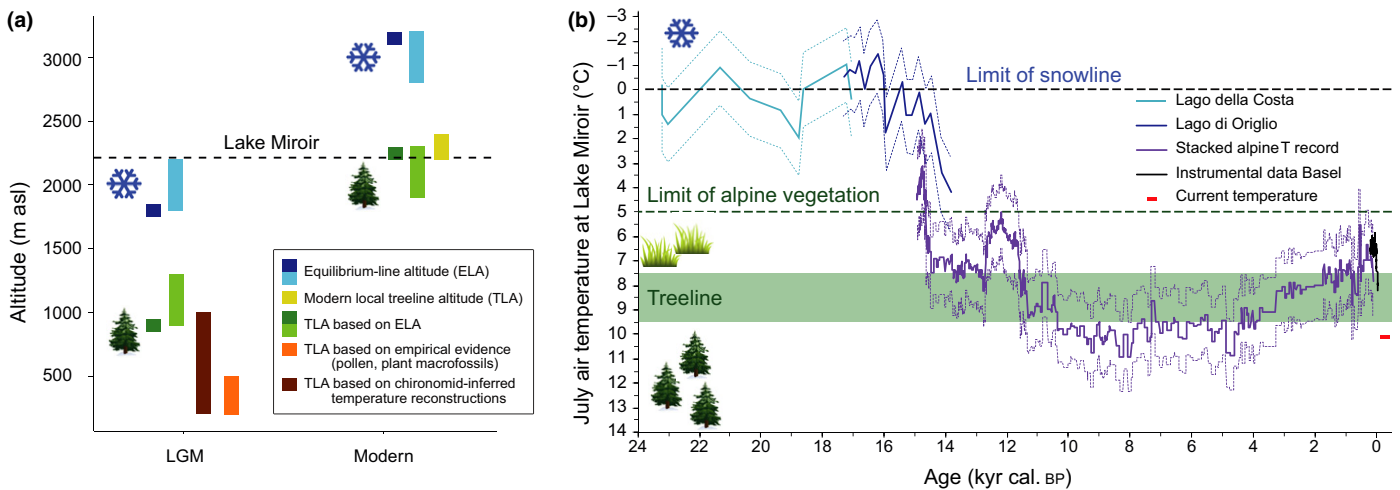


Fig. 2 (a) Modern and Last Glacial Maximum (LGM) equilibrium line altitude (ELA, indicated by a snowflake) and treeline altitude (TLA, indicated by a tree) based on geomorphological, palaeoclimatological, and ecological data. Modern ELAs are based on Cossart *et al.* (2012) (dark blue bar) and Rabatel *et al.* (2013) (light blue bar); LGM ELAs are based on Cossart *et al.* (2012), and on the difference between modern ELA as from Rabatel *et al.* (2013) and LGM ELAs, following Broecker & Denton (1990) and Federici *et al.* (2017) (light blue bar). Modern local TLA (yellow bar) is between 2200 and 2400 m above sea level (asl) (Carcaillet & Blarquez, 2017), and LGM TLA (orange bar) south of the Alps was *c.* 200–400 m asl (Tinner & Vescovi, 2005), corresponding to an LGM-to-modern treeline rise of *c.* 2000 m (Marta *et al.*, 2013). Modern and LGM ELA-estimated TLAs (green bars) were inferred based on the elevation of the ELA and the modern altitudinal difference ($\Delta Z = 900 \pm 100$ m) between ELA and TLA (Körner, 2003). LGM TLA was also estimated using chironomid-inferred July-air temperatures from Lago della Costa (Samartin *et al.*, 2016), July temperatures of 7.5 to 9.5°C necessary for tree growth and lapse rates of 6°C km^{-1} (brown bar). The altitudinal position of Lake Miroir is shown with a horizontal dashed line. (b) Mean July-air temperature scenarios for the LGM to present estimated for the altitude of Lake Miroir using two chironomid-based temperature reconstructions from the Alpine region (Lago della Costa, Samartin *et al.*, 2016; Lago di Origlio, Samartin *et al.*, 2012), and a chironomid-inferred stacked Alpine temperature record representing temperature in the northern and central Swiss Alps (Heiri *et al.*, 2015). Temperatures were corrected assuming a constant modern temperature lapse rate of 6°C km^{-1} (Livingstone & Lotter, 1998). The Origlio record is only shown for the older section ($> 14\,000$ cal yr BP, where 0 cal yr BP = AD 1950). Current July-air temperatures are shown for the area of Lake Miroir (horizontal red bar) based on WorldClim 2.0 (Fick & Hijmans, 2017). In addition, historical (AD 1755–2017) 30-yr moving average July-air temperature measurements from Basel Binningen (black line) are displayed, corrected to the altitude of Lake Miroir. ELA, TLA and alpine vegetation temperature thresholds are inferred from today's observations in space (Körner, 2003; Landolt, 2003). All three temperature scenarios indicate that Lake Miroir was located well above the TLA and, for two scenarios, even above the limit of alpine vegetation during the LGM and the end of the last glaciation $> 14\,700$ cal yr BP.

has been estimated to *c.* 1000 m (Broecker & Denton, 1990; Federici *et al.*, 2017). This is a conservative estimate, given that greater ELA rises (*c.* 1300–1400 m) have been suggested, for instance, for the Durance valley itself (Cossart *et al.*, 2012) and as far south as Montenegro (Bavec *et al.*, 2004). Thus, if we assume an ELA 1000–1400 m lower than present this would lead to permanent snow and ice accumulation during the LGM at an altitude of *c.* 1600–2000 m asl, an elevation well below Lake Miroir (Fig. 2a). Lake Miroir, even as a nunatak, would thus have been perennially frozen and snow-covered, making tree or shrub growth impossible. Furthermore, snowline and treeline co-vary in space and are separated today by an altitudinal difference (ΔZ) of *c.* 800–900 m in the Alps (Körner, 2003; Landolt, 2003). If the modern ΔZ was used to infer the upper limit of LGM tree growth, the TLA would have been at 800–1300 m asl (Fig. 2a).

Quantitative vegetation-independent palaeotemperature reconstructions (Fig. 2b) as well as palaeoclimatic simulations show that LGM mean July-air temperatures were 10–12°C lower than today in the south-eastern sector of the Alps (Samartin *et al.*, 2016) and that the western Alpine sector was likely cooler than the eastern sector (Heyman *et al.*, 2013). At the upper treeline tree growth is mainly temperature limited (Körner, 2003), and the upper treeline in the Alps is located at mean July temperatures of 7.5 to 9.5°C (Landolt,

2003). Assuming a lapse rate of 6°C km^{-1} close to modern conditions (Livingstone & Lotter, 1998; Becker *et al.*, 2016), a 10–12°C drop would result in *c.* 0°C mean July temperatures at Lake Miroir. This temperature estimate agrees well with estimated ELAs and supports the argument that during the LGM the area was covered by snow, ice, and permafrost (Osterkamp & Burn, 2003), making tree growth or persistence impossible (Körner, 2003; MacDonald *et al.*, 2008; Kruse *et al.*, 2016).

Obtaining a mean July-air temperature of 8°C at Lake Miroir on the basis of the reconstructed palaeotemperature records (Fig. 2b) would require an unrealistic summer-temperature lapse rate of *c.* 2°C km^{-1} . Such low lapse rates, however, are not needed to model the LGM Alpine ice cap (Becker *et al.*, 2016). Instead, TLA depressions of *c.* 1400–1700 m are in much better agreement with both theoretical (models) and empirical evidence (pollen, plant macrofossils), which suggest LGM TLA depressions south of the Alps > 2000 m (Tinner & Vescovi, 2005; Marta *et al.*, 2013), resulting in realistic TLA reconstructions (e.g. of *L. decidua*) below 500 m asl (Kaltenrieder *et al.*, 2009; Monegato *et al.*, 2015), that is > 1500 m below Lac Miroir. Taken together, the available evidence suggests that even if Lake Miroir was located on a nunatak at the margin of valley glaciers, it was most likely permanently covered by snow or ice, thus unsuited for tree growth, and far above treeline.

The picture does not change when considering single trees in sheltered microhabitats (e.g. rocky slopes) that are located today *c.* 200–300 m above the treeline (Körner, 2003).

The evidence clearly argues in favour of a more conservative interpretation than that proposed by Carcaillet & Blarquez (2017), implying that the macrofossils assigned to the LGM actually were deposited either during the early Holocene (< 11 650 cal yr BP) or during the Bølling-Allerød Lateglacial Interstadial (*c.* 14 700–12 850 cal yr BP). An early-Holocene age would fit with evidence attesting that the spread of *L. decidua* in the western sector of the Alps occurred later than in the eastern sector (Wagner *et al.*, 2015). By contrast, a Bølling-Allerød age would be truly a novel palaeoecological finding showing the establishment of modern treeline before the Holocene. This finding would be conceivable on the basis of (1) the lowermost plant-macrofossil ¹⁴C date (9980 ± 50 ¹⁴C yr BP), and (2) palaeotemperature records (i.e. the chironomid-inferred mean July temperatures shown in Fig. 2b). Both scenarios would show that *L. decidua* populations spread fast at high altitudes. Thus, the presence of tree refugia on nunataks is not required to explain the genetic differentiation of western and eastern populations (Mosca *et al.*, 2012). Because charcoal-accumulation rates strongly depend on the sediment-accumulation rates that are inferred from the depth-age model, the charcoal-inferred fire history presented by Carcaillet & Blarquez (2017) is also poorly supported. Moreover, to obtain a more robust reconstruction of Fire-Return Intervals, the analysis should have included statistical testing of potentially spurious peaks (Higuera *et al.*, 2010; Finsinger *et al.*, 2014).


We conclude that currently available evidence rather suggests that during the LGM the area around Lake Miroir was located far above the treeline and at near-to-zero July temperatures. Ultimately, there is only one type of evidence that could convincingly and unambiguously support the conclusion of tree growth on a nunatak at 2200 m asl during the LGM in the European Alps: the use of a more accurate dating method, such as repeated radiocarbon dates on terrestrial plant macrofossils from the basal part of the sediment sequence. Without this, the interpretations given by Carcaillet & Blarquez (2017) remain unsupported and in conflict with independent palaeoecological, palaeoclimatological, and geomorphological evidence.

Author contributions

W.F. and W.T. guided the writing, and W.F. and C.S. compiled the data with inputs from O.H., A.R. and C.M-M. W.F., C.S., O.H., C.M-M., A.R., T.G., J.N.H., P.K., E.K.M., C.R., J.M.R. and W.T. discussed the results and contributed substantially to the final manuscript.

ORCID

Walter Finsinger  <http://orcid.org/0000-0002-8297-0574>

Walter Finsinger^{1*} , Christoph Schwörer², Oliver Heiri², César Morales-Molino^{2,3}, Adriano Ribolini⁴, Thomas

Giesecke⁵, Jean Nicolas Haas⁶, Petra Kaltenrieder², Enikő K. Magyari⁷, Cesare Ravazzi⁸, Juan Manuel Rubiales^{9,10} and Willy Tinner²

¹Palaeoecology, ISEM, CNRS, EPHE, IRD, Univ. Montpellier, F-34095 Montpellier, France

²Institute of Plant Sciences and Oeschger Centre for Climate Change Research, University of Bern, Altenbergrain 21, CH-3013 Bern, Switzerland

³Palaeoclimate, EPOC (UMR 5805 CNRS/University of Bordeaux), University of Bordeaux, F-33615 Pessac, France

⁴Dipartimento di Scienze della Terra, University of Pisa, via S. Maria 53, 56126 Pisa, Italy

⁵Department of Palynology and Climate Dynamics, University of Göttingen, Wilhelm-Weber-Str. 2a, D-37073 Göttingen, Germany

⁶Institute of Botany, Division of Systematics, Palynology and Geobotany, University of Innsbruck, Sternwartestrasse 15, A-6020 Innsbruck, Austria

⁷MTA-MTM-ELTE Research Group for Paleontology and Department of Environmental and Landscape Geography, Eötvös Lóránd University, Pázmány Péter stny. 1/C, H-1117 Budapest, Hungary

⁸CNR – Institute for the Dynamics of Environmental Processes, U1 – DISAT – Università Milano Bicocca, Piazza della Scienza 1, I-20126 Milano, Italy

⁹Departamento de Sistemas y Recursos Naturales, Escuela Técnica Superior de Ingeniería de Montes, Forestal y del Medio Natural, Universidad Politécnica de Madrid, E-28040 Madrid, Spain

¹⁰Departamento de Biodiversidad, Ecología y Evolución, Facultad de Ciencias Biológicas, Universidad Complutense de Madrid, C/José Antonio Novais, E-28040 Madrid, Spain

(*Author for correspondence: tel +33 (0)4 67 14 32 70; email walter.finsinger@umontpellier.fr)

References

- Andree M, Oeschger H, Siegenthaler U, Riesen T, Moell M, Ammann B, Tobolski K. 1986. ¹⁴C dating of plant macrofossils in lake sediment. *Radiocarbon* 28: 411–416.
- Bakke J, Nesje A. 2011. Equilibrium-line altitude (ELA). In: Singh VP, Singh P, Haritashya UK, eds. *Encyclopedia of earth science series. Encyclopedia of snow, ice and glaciers*. Dordrecht, the Netherlands: Springer, 268–277.
- Bavec M, Tulaczyk SM, Mahan SA, Stock GM. 2004. Late Quaternary glaciation of the upper Soča river region (Southern Julian Alps, NW Slovenia). *Sedimentary Geology* 165: 265–283.
- Becker P, Seguinot J, Jouvet G, Funk M. 2016. Last Glacial Maximum precipitation pattern in the Alps inferred from glacier modelling. *Geographica Helvetica* 71: 173–187.
- Bennett KD, Tzedakis PC, Willis KJ. 1991. Quaternary refugia of North European trees. *Journal of Biogeography* 18: 103–115.
- Birks HH, Birks HJB. 2000. Future uses of pollen analysis must include plant macrofossils. *Journal of Biogeography* 27: 31–35.
- Birks HJB, Willis KJ. 2008. Alpines, trees, and refugia in Europe. *Plant Ecology & Diversity* 1: 147–160.
- Björck S, Wohlfarth B. 2001. ¹⁴C chronostratigraphic techniques in paleolimnology. In: Last M, Smol JP, eds. *Tracking environmental change using lake sediments*. Dordrecht, the Netherlands: Kluwer Academic Publishers, 205–245.

- Broecker WS, Denton GH. 1990. The role of ocean-atmosphere reorganizations in glacial cycles. *Quaternary Science Reviews* 9: 305–341.
- Carcaillet C, Blarquez O. 2017. Fire ecology of a tree glacial refugium on a nunatak with a view on Alpine glaciers. *New Phytologist* 216: 1281–1290.
- Clark JS. 1998. Why trees migrate so fast: confronting theory with dispersal biology and the paleorecord. *American Naturalist* 152: 204–224.
- Cossart E. 2008. Reconstitution de la géométrie d'un glacier disparu et modélisation des conséquences de sa disparition. Exemple du glacier durancien lors du Dernier Maximum Glaciaire. *Revue Internationale de Géomatique* 18: 95–111.
- Cossart E, Fort M, Bourlès D, Braucher R, Perrier R, Siame L. 2012. Deglaciation pattern during the Lateglacial/Holocene transition in the southern French Alps. Chronological data and geographical reconstruction from the Clarée Valley (upper Durance catchment, southeastern France). *Palaeogeography, Palaeoclimatology, Palaeoecology* 315–316: 109–123.
- Deevey ES, Gross MS, Hutchinson GE, Kraybill HL. 1954. The natural C¹⁴ contents of materials from hard-water lakes. *Proceedings of the National Academy of Sciences, USA* 40: 285–288.
- Federici PR, Ribolini A, Spagnolo M. 2017. Glacial history of the Maritime Alps from the last glacial maximum to the Little Ice Age. *Geological Society, London, Special Publications* 433: 137–159.
- Fick SE, Hijmans RJ. 2017. WorldClim 2: new 1-km spatial resolution climate surfaces for global land areas. *International Journal of Climatology* 37: 4302–4315.
- Finsinger W, Kelly R, Fevre J, Magyari EK. 2014. A guide to screening charcoal peaks in macrocharcoal-area records for fire-episodes reconstructions. *Holocene* 24: 1002–1008.
- Fowler AJ, Gillespie R, Hedges RE. 1986. Radiocarbon dating of sediments. *Radiocarbon* 28: 441–450.
- Giesecke T, Brewer S, Finsinger W, Leydet M, Bradshaw RHW. 2017. Patterns and dynamics of European vegetation change over the last 15,000 years. *Journal of Biogeography* 44: 1441–1456.
- Giesecke T, Davis B, Brewer S, Finsinger W, Wolters S, Blaauw M, De Beaulieu J-L, Binney H, Fyfe RM, Gaillard M-J *et al.* 2014. Towards mapping the late Quaternary vegetation change of Europe. *Vegetation History and Archaeobotany* 23: 75–86.
- Grimm EC, Maher LJJ, Nelson DM. 2009. The magnitude of error in conventional bulk-sediment radiocarbon dates from central North America. *Quaternary Research* 72: 301–308.
- Hågvar S, Ohlson M. 2013. Ancient carbon from a melting glacier gives high ¹⁴C age in living pioneer invertebrates. *Scientific Reports* 3: 2820.
- van der Hammen T, Wijmstra TA, Zagwijn WH. 1971. The floral record of the Late Cenozoic of Europe. In: Flint RF, Turekian KK, eds. *The Late Cenozoic glacial ages*. New Haven, CT, USA: Yale University Press, 391–424.
- Heikkilä M, Fontana SL, Seppä H. 2009. Rapid Lateglacial tree population dynamics and ecosystem changes in the eastern Baltic region. *Journal of Quaternary Science* 24: 802–815.
- Heiri O, Brooks SJ, Renssen H, Bedford A, Hazekamp M, Ilyashuk B, Jeffers ES, Lang B, Kirilova E, Kuiper S *et al.* 2014. Validation of climate model-inferred regional temperature change for late-glacial Europe. *Nature Communications* 5: 4914.
- Heiri O, Ilyashuk B, Millet L, Samartin S, Lotter AF. 2015. Stacking of discontinuous regional palaeoclimate records: Chironomid-based summer temperatures from the Alpine region. *Holocene* 25: 137–149.
- Heyman BM, Heyman J, Fickert T, Harbor JM. 2013. Paleo-climate of the central European uplands during the last glacial maximum based on glacier mass-balance modeling. *Quaternary Research* 79: 49–54.
- Higuera PE, Gavin DG, Bartlein PJ, Hallett DJ. 2010. Peak detection in sediment-charcoal records: impacts of alternative data analysis methods on fire-history interpretations. *International Journal of Wildland Fire* 19: 996.
- Hubay K, Molnár M, Orbán I, Braun M, Bíró T, Magyari E. 2018. Age–depth relationship and accumulation rates in four sediment sequences from the Retezat Mts, South Carpathians (Romania). *Quaternary International* 477: 7–18.
- Kaltenrieder P, Belis CA, Hofstetter S, Ammann B, Ravazzi C, Tinner W. 2009. Environmental and climatic conditions at a potential Glacial refugial site of tree species near the Southern Alpine glaciers. New insights from multiproxy sedimentary studies at Lago della Costa (Euganean Hills, Northeastern Italy). *Quaternary Science Reviews* 28: 2647–2662.
- Kerckhove C, Gidon M, Pairis J-L. 2005. *Feuille de Embrun–Guillemestre, Carte Géologique de la France, Map 871, scale 1:50,000*. Orleans, France: Bureau de Recherche Géologiques et Minières (BRGM). [WWW document] URL <http://infoterre.brgm.fr/viewer/MainTileForward.do>; <https://www.geoportail.gouv.fr/donnees/cartes-geologiques> [accessed 4 April 2018].
- Körner C. 2003. *Alpine plant life – functional plant ecology of high mountain ecosystems*. Berlin, Germany: Springer Verlag.
- Kruse S, Wiczorek M, Jeltsch F, Hertzschuh U. 2016. Treeline dynamics in Siberia under changing climates as inferred from an individual-based model for *Larix*. *Ecological Modelling* 338: 101–121.
- Kuneš P, Pelánková B, Chytrý M, Jankovská V, Pokorný P, Petr L. 2008. Interpretation of the last-glacial vegetation of eastern-central Europe using modern analogues from southern Siberia. *Journal of Biogeography* 35: 2223–2236.
- Landolt E. 2003. *Unsere Alpenflora*. Stuttgart, Germany: Gustav Fischer.
- Lane CS, Blockley SPE, Lotter AF, Finsinger W, Filippi ML, Matthews IP. 2012. A regional tephrostratigraphic framework for central and southern European climate archives during the Last Glacial to Interglacial transition: comparisons north and south of the Alps. *Quaternary Science Reviews* 36: 50–58.
- Livingstone DM, Lotter AF. 1998. The relationship between air and water temperatures in lakes of the Swiss Plateau: a case study with palaeolimnological implications. *Journal of Paleolimnology* 19: 181–198.
- Lüdi W. 1950. Die Pflanzenwelt des Aletschwald-Reservates bei Brig (Wallis). *Bulletin de la Murithienne* 67: 122–178.
- MacDonald G, Kremenetski K, Beilman D. 2008. Climate change and the northern Russian treeline zone. *Philosophical Transactions of the Royal Society B: Biological Sciences* 363: 2283–2299.
- Magri D, Vendramin GG, Comps B, Dupanloup I, Geburek T, Gömöry D, Latalowa M, Litt T, Paule L, Roure JM *et al.* 2006. A new scenario for the Quaternary history of European beech populations: palaeobotanical evidence and genetic consequences. *New Phytologist* 171: 199–221.
- Magyari EK, Jakab G, Bálint M, Kern Z, Buczkó K, Braun M. 2012. Rapid vegetation response to Lateglacial and early Holocene climatic fluctuation in the South Carpathian Mountains (Romania). *Quaternary Science Reviews* 35: 116–130.
- Marta S, Mattoccia M, Sbordoni V. 2013. Modelling landscape dynamics in a glacial refugium – or the spatial and temporal fluctuations of tree line altitudes. *Journal of Biogeography* 40: 1767–1779.
- Marty J, Myrbo A. 2014. Radiocarbon dating suitability of aquatic plant macrofossils. *Journal of Paleolimnology* 52: 435–443.
- Monegato G, Ravazzi C, Culiberg M, Pini R, Bavec M, Calderoni G, Jež J, Perego R. 2015. Sedimentary evolution and persistence of open forests between the south-eastern Alpine fringe and the Northern Dinarides during the Last Glacial Maximum. *Palaeogeography, Palaeoclimatology, Palaeoecology* 436: 23–40.
- Mosca E, Eckert AJ, Di Piero EA, Rocchini D, La Porta N, Belletti P, Neale DB. 2012. The geographical and environmental determinants of genetic diversity for four alpine conifers of the European Alps. *Molecular Ecology* 21: 5530–5545.
- van Mourik JM, Slotboom RT, van der Plicht J, Streurman HJ, Kuijper WJ, Hoek WZ, de Graaff LWS. 2013. Geochronology of *Betula* extensions in pollen diagrams of Alpine Late-glacial lake deposits: a case study of the Late-glacial deposits of the Gasserplatz soil archives (Vorarlberg, Austria). *Quaternary International* 306: 3–13.
- Osterkamp TE, Burn CR. 2003. Permafrost. In: Holton JR, ed. *Encyclopedia of atmospheric science*. Oxford, UK: Academic Press, 1717–1729.
- Rabatel A, Létréguilly A, Dedieu J-P, Eckert N. 2013. Changes in glacier equilibrium-line altitude in the western Alps from 1984 to 2010: evaluation by remote sensing and modeling of the morpho-topographic and climate controls. *Cryosphere* 7: 1455–1471.
- Samartin S, Heiri O, Kaltenrieder P, Kühl N, Tinner W. 2016. Reconstruction of full glacial environments and summer temperatures from Lago della Costa, a refugial site in Northern Italy. *Quaternary Science Reviews* 143: 107–119.
- Samartin S, Heiri O, Lotter AF, Tinner W. 2012. Climate warming and vegetation response after Heinrich event 1 (16 700–16 000 cal yr BP) in Europe south of the Alps. *Climate of the Past* 8: 1913–1927.

- Stewart JR, Lister AM. 2001. Cryptic northern refugia and the origins of the modern biota. *Trends in Ecology & Evolution* 16: 608–613.
- Tinner W, Theurillat J-P. 2003. Uppermost limit, extent, and fluctuations of the timberline and treeline ecotone in the Swiss Central Alps during the past 11,500 years. *Arctic, Antarctic, and Alpine Research* 35: 158–169.
- Tinner W, Vescovi E. 2005. Treeline ecology and oscillations in the Alps from the Pleniglacial to the present. *Studi Trentini Scienze Naturali, Acta Geologica* 82: 7–15.
- Tzedakis PC, Emerson BC, Hewitt GM. 2013. Cryptic or mystic? Glacial tree refugia in northern Europe. *Trends in Ecology & Evolution* 28: 696–704.
- Väliranta M, Kaakinen A, Kuhry P, Kultti S, Salonen JS, Seppä H. 2011. Scattered late-glacial and early Holocene tree populations as dispersal nuclei for forest development in north-eastern European Russia. *Journal of Biogeography* 38: 922–932.
- Vescovi E, Ravazzi C, Arpent E, Finsinger W, Pini R, Valsecchi V, Wick L, Ammann B, Tinner W. 2007. Interactions between climate and vegetation during the Lateglacial period as recorded by lake and mire sediment archives in Northern Italy and Southern Switzerland. *Quaternary Science Reviews* 26: 1650–1669.
- Wagner S, Litt T, Sánchez-Goni M-F, Petit RJ. 2015. History of *Larix decidua* Mill. (European larch) since 130 ka. *Quaternary Science Reviews* 124: 224–247.
- Walker MJC, Bryant C, Coope GR, Harkness DD, Lowe JJ, Scott EM. 2001. Towards a radiocarbon chronology of the Late-Glacial: sample selection strategies. *Radiocarbon* 43: 1007–1019.
- Willis KJ, Rudner E, Sümegei P. 2000. The full-glacial forests of central and southeastern Europe. *Quaternary Research* 53: 203–213.
- Willis KJ, Whittaker RJ. 2000. Palaeoecology: the refugial debate. *Science* 287: 1406–1407.

Key words: European Alps, Last Glacial Maximum (LGM), nunatak, refugia, treeline.



About New Phytologist

- *New Phytologist* is an electronic (online-only) journal owned by the New Phytologist Trust, a **not-for-profit organization** dedicated to the promotion of plant science, facilitating projects from symposia to free access for our Tansley reviews and Tansley insights.
- Regular papers, Letters, Research reviews, Rapid reports and both Modelling/Theory and Methods papers are encouraged. We are committed to rapid processing, from online submission through to publication 'as ready' via *Early View* – our average time to decision is <26 days. There are **no page or colour charges** and a PDF version will be provided for each article.
- The journal is available online at Wiley Online Library. Visit **www.newphytologist.com** to search the articles and register for table of contents email alerts.
- If you have any questions, do get in touch with Central Office (np-centraloffice@lancaster.ac.uk) or, if it is more convenient, our USA Office (np-usaoffice@lancaster.ac.uk)
- For submission instructions, subscription and all the latest information visit **www.newphytologist.com**