



**HAL**  
open science

# Phylogenetic molecular species delimitations unravel potential new species in the pest genus *Spodoptera* Guenée, 1852 (Lepidoptera, Noctuidae)

Pascaline Dumas, Jérôme Barbut, Bruno Le Ru, Jean-François Silvain, Anne Laure Clamens, Emmanuelle d'Alençon, Gael Kergoat

► **To cite this version:**

Pascaline Dumas, Jérôme Barbut, Bruno Le Ru, Jean-François Silvain, Anne Laure Clamens, et al. Phylogenetic molecular species delimitations unravel potential new species in the pest genus *Spodoptera* Guenée, 1852 (Lepidoptera, Noctuidae). PLoS ONE, 2015, 10 (4), pp.e0122407. 10.1371/journal.pone.0122407 . hal-01837281

**HAL Id: hal-01837281**

**<https://hal.science/hal-01837281>**

Submitted on 27 May 2020

**HAL** is a multi-disciplinary open access archive for the deposit and dissemination of scientific research documents, whether they are published or not. The documents may come from teaching and research institutions in France or abroad, or from public or private research centers.

L'archive ouverte pluridisciplinaire **HAL**, est destinée au dépôt et à la diffusion de documents scientifiques de niveau recherche, publiés ou non, émanant des établissements d'enseignement et de recherche français ou étrangers, des laboratoires publics ou privés.



Distributed under a Creative Commons Attribution 4.0 International License

RESEARCH ARTICLE

# Phylogenetic Molecular Species Delimitations Unravel Potential New Species in the Pest Genus *Spodoptera* Guenée, 1852 (Lepidoptera, Noctuidae)

Pascaline Dumas<sup>1\*</sup>, Jérôme Barbut<sup>2</sup>, Bruno Le Ru<sup>3,4</sup>, Jean-François Silvain<sup>3</sup>, Anne-Laure Clamens<sup>5</sup>, Emmanuelle d'Alençon<sup>6,7</sup>, Gael J. Kergoat<sup>5</sup>

**1** Institute for Biodiversity and Ecosystem Dynamics, University of Amsterdam, Amsterdam, The Netherlands, **2** Direction des collections—USM 602, Muséum National d'Histoire Naturelle, Paris, France, **3** IRD/CNRS, Laboratoire Evolution Génomes Spéciation, Avenue de la terrasse, Gif-sur-Yvette, France and Université Paris-Sud 11, Orsay, France, **4** Unité de Recherche IRD 072, African Insect Science for Food and Health (icipe), Nairobi, Kenya, **5** INRA—UMR 1062 CBGP (INRA, IRD, CIRAD, Montpellier SupAgro), Montpellier-sur-Lez, France, **6** UM2—UMR 1333 DGIMI, Université Montpellier 2, Montpellier, France, **7** INRA—UMR 1333 DGIMI, Université Montpellier 2, Montpellier, France

\* [pascalinedumas@gmail.com](mailto:pascalinedumas@gmail.com)



OPEN ACCESS

**Citation:** Dumas P, Barbut J, Le Ru B, Silvain J-F, Clamens A-L, d'Alençon E, et al. (2015) Phylogenetic Molecular Species Delimitations Unravel Potential New Species in the Pest Genus *Spodoptera* Guenée, 1852 (Lepidoptera, Noctuidae). PLoS ONE 10(4): e0122407. doi:10.1371/journal.pone.0122407

**Academic Editor:** Diego Fontaneto, Consiglio Nazionale delle Ricerche (CNR), ITALY

**Received:** December 12, 2014

**Accepted:** February 20, 2015

**Published:** April 8, 2015

**Copyright:** © 2015 Dumas et al. This is an open access article distributed under the terms of the [Creative Commons Attribution License](https://creativecommons.org/licenses/by/4.0/), which permits unrestricted use, distribution, and reproduction in any medium, provided the original author and source are credited.

**Data Availability Statement:** All new sequences generated for the study are available from the GenBank database (accession numbers) KF854152 to KF854234.

**Funding:** Part of the sequencing was supported by a Genoscope project @-Speed-Id (Accurate SPEciEs Delimitation and Identification of eukaryotic biodiversity using DNA markers) proposed by F-BoL, the French Barcode of life initiative and by the program 'Bibliothèque du Vivant' (Project SPODOBAR) supported by a joint "Centre national de la recherche scientifique", "Institut National de la

## Abstract

Nowadays molecular species delimitation methods promote the identification of species boundaries within complex taxonomic groups by adopting innovative species concepts and theories (e.g. branching patterns, coalescence). As some of them can efficiently deal with large single-locus datasets, they could speed up the process of species discovery compared to more time consuming molecular methods, and benefit from the existence of large public datasets; these methods can also particularly favour scientific research and actions dealing with threatened or economically important taxa. In this study we aim to investigate and clarify the status of economically important moths species belonging to the genus *Spodoptera* (Lepidoptera, Noctuidae), a complex group in which previous phylogenetic analyses and integrative approaches already suggested the possible occurrence of cryptic species and taxonomic ambiguities. In this work, the effectiveness of innovative (and faster) species delimitation approaches to infer putative species boundaries has been successfully tested in *Spodoptera*, by processing the most comprehensive dataset (in terms of number of species and specimens) ever achieved; results are congruent and reliable, irrespective of the set of parameters and phylogenetic models applied. Our analyses confirm the existence of three potential new species clusters (for *S. exigua* (Hübner, 1808), *S. frugiperda* (J.E. Smith, 1797) and *S. mauritia* (Boisduval, 1833)) and support the synonymy of *S. marima* (Schaus, 1904) with *S. ornithogalli* (Guenée, 1852). They also highlight the ambiguity of the status of *S. cosmiodes* (Walker, 1858) and *S. descoinsi* Lalanne-Cassou & Silvain, 1994. This case study highlights the interest of molecular species delimitation methods as valuable tools for species discovery and to emphasize taxonomic ambiguities.

Recherche Agronomique" and "Muséum national d'Histoire naturelle" consortium. The project was also supported by INRA (AAP SPE SPODOPTERA) and a grant from the French National Research Agency (ANR-12-BSV7-0004-01 ADA-SPODO).

**Competing Interests:** The authors have declared that no competing interests exist.

## Introduction

Though millions of species remain to be discovered and described [1–4], the discipline of finding, describing and naming species—Taxonomy—currently faces an important deficit in terms of funding and manpower [5]. This ‘taxonomy crisis’ is a major issue because the speed at which species are being lost is much faster than the required time to find, describe and potentially protect them [6,7]. The problem is also aggravated by the fact that traditional morphological studies are usually extremely time consuming, especially when dealing with hyper diverse groups such as insects or plants, or when assessing species complexes with superficially indistinguishable morphological attributes [8–13]. Our lack of knowledge is even more problematic when facing species complexes that threaten public health [14,15] or target important crops [16–19]. In this context, some hopes came from the use of molecular data in studies on taxonomy and systematics. Thanks to the increased availability of molecular data over the last decades, DNA-based taxonomy has been proposed as an elegant and effective solution to speed up species identifications and discoveries [20–27]. However, this initiative was quickly criticized on both practical [28–32] and theoretical [33–39] grounds, with numerous studies underlining the fact that molecular data alone (especially molecular barcodes) cannot solve the current taxonomic crisis [40–43]. The general consensus that emerged from these debates was that faster and more accurate species identifications or delimitations can be achieved through the use of multiple complementary sources of information (e.g. behavioural, ecological, molecular, morphological) [17,44,45], hence underlining the need for a more ‘integrative’ [46,47] or ‘iterative’ taxonomy [48].

Because of their ever-increasing accessibility and decreasing cost, it is no wonder that molecular data are now routinely incorporated into taxonomy studies [7,17,45,49–52]. Of particular interest is the fact that multiple analytic procedures have been explicitly developed to delimit species boundaries using molecular data [53–57]. A first class of approaches—referred to as species discovery procedures—assigns samples to putative species clusters without *a priori* information [58]. A second class of approaches—referred to as species validation procedures—requires an *a priori* assignation of samples to putative species clusters, which can be later validated [58]. Both species discovery and species validation approaches can rely on molecular phylogenies, which are increasingly used to help identifying or delimiting species [17,54–56,59–60]. All tree-based species delimitation methods usually rely on the ‘phylogenetic species concept’ (*sensu* De Queiroz [61]), within a coalescent framework [55,62–63], whose central aim is to identify independently evolving lineages without gene flow, in which selection and drift operate, each representing a putative species [64]. Tree-based species delimitation methods can operate with single or multi locus data; the use of multi locus data is mandatory for species validation procedures and optional for species discovery approaches [58]. For species discovery procedures, the use of multi locus data is usually advocated because of its superior power to resolve complex evolutionary histories resulting from recent episodes of radiation, incomplete lineage sorting, gene introgression or species hybridization [58,65,66]. All these processes usually generate discordance between gene trees and species trees [67], which can bias the inference of putative species clusters. Nonetheless, single locus data have been proved useful to provide robust inferences of evolutionary histories [68] and quick assessments of species boundaries and diversity [26,69–72]. More recently they have been also associated with concise morphological descriptions to produce rapid descriptions of new species, an approach referred to as turbo-taxonomy [73–75]. Finally the use of single locus data also benefits from the fact that several genes (e.g. 16S ribosomal RNA) are well represented in large public databases such as GenBank (<http://www.ncbi.nlm.nih.gov/genbank/>) or the Barcode of Life Database (BOLD;

<http://www.boldsystems.org/>; for the mitochondrial cytochrome c oxidase subunit I gene (COI)).

In this study, we explore the potential interest and efficiency of species discovery approaches to assess species status in moths belonging to the genus *Spodoptera* (Lepidoptera, Noctuidae). This genus encompasses 30 species [76], and includes several species whose status has been questioned in the past based on biological [77–79], morphological [80,81] and molecular evidence [82–85]. Clarifying *Spodoptera* species boundaries is of prime importance because half of known *Spodoptera* species are pests of economic importance that target major crops such as beans, cotton, maize, millet, rice, sorghum, soybean or tomatoes [76,86,87]. A particular focus will be made on the fall armyworm (FAW) *Spodoptera frugiperda*, whose identity is particularly debated [88–91]. The fall armyworm is a widespread and well-known agricultural pest in the Western hemisphere [76,87]. It is an extremely polyphagous species, which is known to develop on about 100 different plants species from 27 plant families [76]. Several features of the biology and the ecology of fall armyworm indicate that this species is composed of two morphologically undistinguishable ecological races ('corn form' and 'rice form' *sensu* Juarez *et al.*, [91]), with distinct host-preferences [92–94]. The use of diagnostic molecular markers [95–99] have indicated that both strains are generally found in sympatry [92,100–101], hence leading some authors to argue that they could constitute a potential example of ongoing or sympatric speciation [78,88]. Both strains also exhibit a high level of genetic differentiation [85]. In addition to the case of *S. frugiperda*, we will also pay attention to five other *Spodoptera* species, whose species status is still disputed [81]. It is the case of *S. marima* and *S. ornithogalli*, which are morphologically related and possibly correspond to geographic races, as they have allopatric distributions and only differ by the absence of sexual dimorphism in *S. marima* males [76,81]. These two species were not found reciprocally monophyletic in a recent multilocus phylogenetic study [85], so we expect additional clarifications with the molecular species delimitation procedures. Another species pair (*S. cosmiodes* and *S. descoinsi*) was also recovered paraphyletic with a strong support in the study of Kergoat *et al.*, [85], but similarly to the case of *S. frugiperda*, additional evidences (differences in pheromone blends, allochronism of females) led to think that these two entities could possibly constitute valid species [76,77]. Finally, the last case that remains to be investigated is the status of Western populations (from East Africa, Mauritius, the Malagasy Republic, and the Reunion Island) and Eastern populations (from the Indomalayan and Australasian regions) of *S. mauritia*, which may constitute valid species of their own [80]. Here we will explore *Spodoptera* species boundaries by using two different tree-based approaches that have drawn much attention in recent years [102–110]: the general mixed Yule-coalescent (GMYC) model [54,108] and the Poisson-Tree-Processes (PTP) [60]. The GMYC model uses the distinct branching patterns between a Yule model (modelling interspecific speciation events) and a coalescent model (modelling expected coalescent times of genes at an intraspecific level) to distinguish between species and population processes. This model is fitted to an ultrametric tree (a tree where all the path-lengths from the root to the tips are equal) and optimized under maximum likelihood to find the threshold time ( $T$ ), which corresponds to the transition between the two distinct branching patterns. It is possible to visualise this transition with a lineage-through-time plot, in which a sharp increase in branching rates is expected at  $T$ . Potential species clusters are then determined by identifying the clades (or single lineages) that originate after this putative threshold. The PTP is a recently developed method, which has the advantage of not requiring an ultrametric tree (inferring an ultrametric tree is usually a time-consuming and potentially error-prone process [103,110]); instead the PTP model uses branch lengths to estimate the mean expected number of substitutions per site between two branching events. The model assumes that each substitution has a small probability of generating a speciation event; hence the number of substitutions between species is expected

to be significantly higher than those within species [60]. The model then implements two independent classes of Poisson processes (one describing speciation and the other describing within species branching events) and searches for transition points between interspecific and intraspecific branching patterns. Potential species clusters are then determined by identifying the clades (or single lineages) that originate after these transition points. Because both methods efficiently deal with large single-locus datasets [110], they can readily benefit from the mass of sequence data generated through the Barcode of Life (BoL) initiative or deposited on public database such as GenBank. Here we combine *Spodoptera* sequences generated from previous studies that are available on GenBank or BOLD with newly generated sequences for the COI gene. The resulting dataset will be used to: (i) infer putative species boundaries in the genus *Spodoptera* by applying species discovery methods particularly suitable to deal with large single-locus datasets; (ii) to test the reliability and the usefulness of these species discovery methods by comparing our results with other sources of information.

## Material and Methods

### Sampling design

The sampling for this study covers 27 of the 30 known *Spodoptera* species [76]. We were unable to acquire sequence data for three species: *S. compta* (Walker, 1869) (from Peru), *S. malagasy* Viette, 1967 (from Madagascar) and *S. roseae* (Schaus, 1923) (from the Galapagos Islands). Both *S. compta* and *S. roseae* are extremely rare in collections (especially *S. compta* which is only known from three specimens collected in the 19<sup>th</sup> century). As for *S. malagasy*, previous sequencing attempts on several old museum specimens have been unsuccessful [85]. For this study we generated 86 new sequences for specimens obtained from the Muséum National d'Histoire Naturelle in Paris (MNHN). In addition we used 118 sequences from the study of Kergoat *et al.*, [85], 463 additional sequences from GenBank and five sequences from BOLD. The resulting dataset encompasses 672 *Spodoptera* specimens, with a mean number of 24 individuals per species (from two individuals for *S. apertura* (Walker, 1865), *S. pecten* Guenée, 1852, *S. pulchella* (Herrich-Schäffer, 1868) and *S. triturrata* (Walker, 1857) to 101 in *S. frugiperda*; S1 Table). All specimens, their geographic origin and the corresponding sequence accession number are listed in a supplementary table (S1 Table). For outgroup choice we used the results of the study of Mitchell *et al.*, [111] to select the following seven noctuid taxa: *Agrotis ipsilon* (Hufnagel, 1766) (Noctuidae), *Helicoverpa armigera* (Hübner, 1805) (Heliiothinae), *Heliiothis virescens* (Fabricius, 1777) (Heliiothinae), *Mythimna unipuncta* (Haworth, 1809) (Hadeninae), *Noctua atlantica* (Warren, 1905) (Noctuidae), *Psychomorpha epimenis* (Drury, 1782) (Agaristinae), *Sesamia inferens* (Walker, 1856) (Xyleninae). Based on Mitchell *et al.*, [111] all trees were rooted with *Psychomorpha epimenis*, which belongs to a clade that is sister to the clade including both *Spodoptera* spp. and the subfamilies Hadeninae, Heliiothinae, Noctuidae and Xyleninae.

### DNA extraction, Polymerase chain reactions and Sequencing

Total genomic DNA of new samples was extracted by grinding up hind legs using DNAeasy Blood and Tissue Kit (Qiagen). Partial fragments of the COI gene were amplified following Kergoat *et al.*, [86]. The polymerase chain reaction (PCR) mix (25  $\mu$ L) consisted of 1xPCR buffer, 1.5mM MgCl<sub>2</sub>, 0.1mM of each desoxynucleotide triphosphates, 1 $\mu$ M of each primer, 1 unit of Taq DNA polymerase (Qiagen) and 2  $\mu$ L (diluted to tenth) of extracted DNA and nuclease-free water to 25  $\mu$ L. PCR cycling conditions were the following: initial denaturation step at 95°C for 3 min followed by 35 cycles including a denaturation step at 92°C for 1 min, an annealing step at 48°C for 1 min, and an elongation step at 72°C for 1 min and a final elongation



step at 72°C for 10 min. The resulting PCR products were processed by Eurofins MWG Synthesis GmbH (Ebersberg, Germany). Both strands were sequenced for all specimens to minimize PCR artifacts and ambiguities.

Sequences of complementary strands were edited and reconciled using Geneious v5.1 software (available at: [www.geneious.com/](http://www.geneious.com/)). The alignment of all sequences was carried out using MAFFT 7 [112] with default option settings. No gap was present in the corresponding alignment. We then used Mesquite v3.0 [113] to check the coding frame for possible errors or stop codons. Additional sequences generated for the study were deposited to GenBank under numbers KF854152 to KF854234. The final dataset encompasses 679 individuals and 658 aligned characters.

## Gene tree inference

Phylogenetic analyses were conducted using Maximum likelihood (ML) and Bayesian inference (BI). For both methods we carried out partitioned analyses to improve phylogenetic accuracy [114]. Partitions and substitution models were determined using PartitionFinder v1.1.1 [115]. The corrected Akaike information criterion (AICc; [116]) was used as a metric for ML analyses whereas the Bayesian information criterion (BIC) was used for BI analyses.

Maximum Likelihood analyses were performed using RAxML v8 [117]. Based on the AICc results (S2 Table) we used only one partition with a General time reversible (GTR) model. Instead of using a standard GTR+G+I model we used the GTR CAT approximation model that accommodate searches incorporating rate heterogeneity with faster inference times and better maximum likelihood values [118]. The best ML tree was obtained using a heuristic search implementing 100 random-addition replicates. Clade support was then assessed using a non-parametric bootstrap procedure (1,000 replicates were used). Nodes supported by bootstrap values (BV)  $\geq 70\%$  were considered as strongly supported following Hillis and Bull [119].

Bayesian inference analyses were carried out using MrBayes 3.2.2 [120] and BEAST 1.8 [121]. Based on the BIC results (S2 Table) we used three partitions. For MrBayes analyses, instead of using a specific model for each partition we used the *mixed* model option. The latter allows to sample across the substitution model space in the Bayesian Markov Chains Monte Carlo (MCMC) analysis itself, removing the need for *a priori* model testing [122]. We conducted two independent runs with four MCMC (one cold and three incrementally heated) that ran for 50 million generations, with trees sampled every 1,000 generations. A conservative burn-in of 25% was then applied after checking for stability on the log-likelihood curves and the split-frequencies of the runs under MrBayes (a threshold of 0.05 was used). For the BEAST analyses, we implemented the models selected by PartitionFinder (S2 Table). Following Tang *et al.*, [110] we also relied on distinct sets of models to infer trees with branch lengths proportional to time. To limit the size of parameter space the majority-rule consensus topology from MrBayes analyses was used as a guide tree. We alternatively used a strict clock model or an uncorrelated lognormal (UCLN) relaxed clock as clock priors, and a birth-death (BD) model as tree prior. The corresponding analyses were carried out using two independent runs of 50 million generations, with trees sampled every 1,000 generations. A conservative burn-in of 25% was then applied after checking for the effective sampling sizes (ESS) of parameters (a threshold of 200 was used). Support of nodes for both MrBayes and BEAST analyses was provided by clade posterior probabilities (PP) as directly estimated from the majority-rule consensus topology. Nodes supported by PP  $\geq 0.95$  were considered as strongly supported following Erixon *et al.*, [123].

## Molecular species delimitations

We followed the recommendations of Tang *et al.*, [110], who advocated the use of model-based gene trees (generated with programs such as MrBayes or RAxML) for PTP analyses and the use of ultrametric trees generated with BEAST for the GMYC analyses. Poisson-Tree-Processes molecular species delimitations were conducted on the Web server of the Exelixis Lab (<http://species.h-its.org/ptp/>), with default settings. The corresponding analyses were carried out using trees either the best tree from the ML analyses or the majority-rule consensus topology resulting from the BI analyses. To avoid biases that may arise if some of the outgroup taxa are too distantly related from ingroup taxa, outgroups were pruned before conducting the PTP analyses for both ML and BI trees. General mixed Yule-coalescent analyses were performed under R (R Development Core Team 2010) using the latest implementation of the GMYC procedure [108], which relies on the following packages: *splits* [124], *APE* [125] and *apTreeshape* [126]. All corresponding analyses were carried out using a single threshold with a confidence interval falling within 2 log-likelihood units of the ML solution [54].

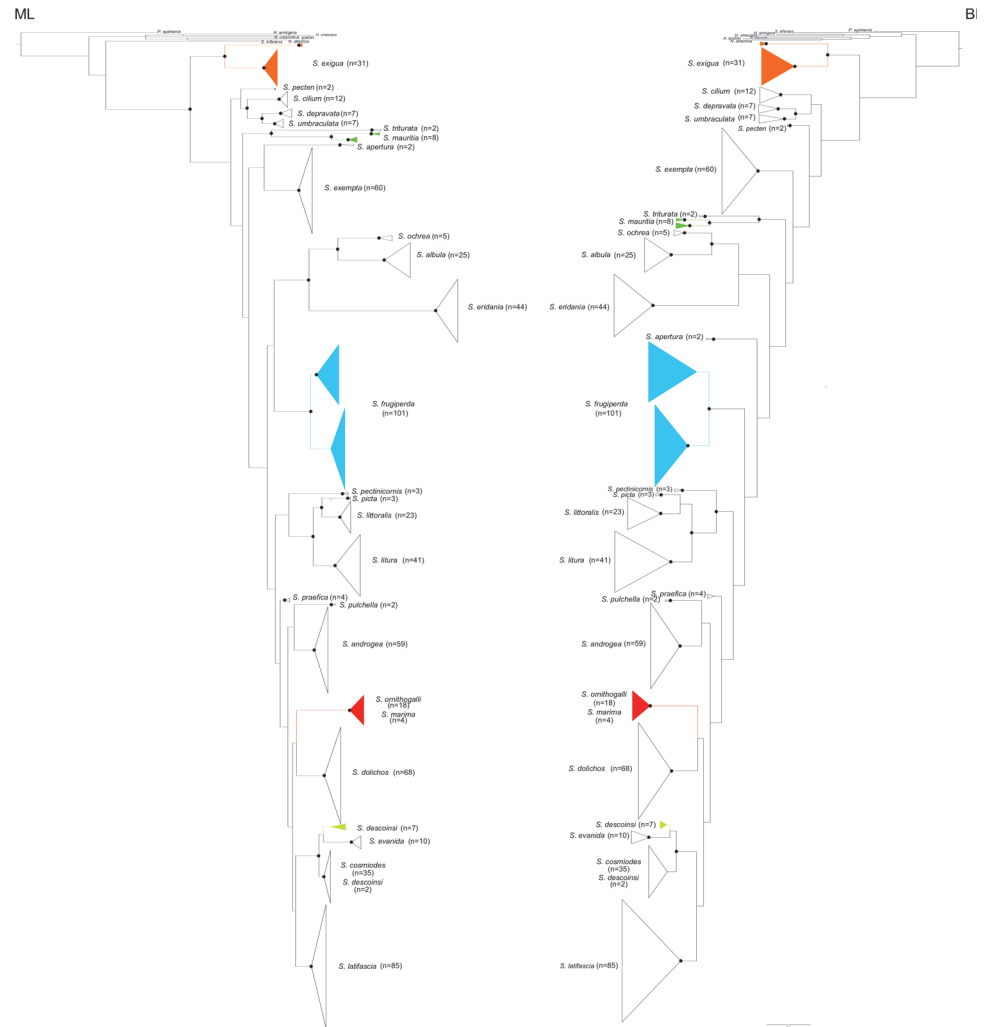
## Results

### Gene tree inference

The phylogenetic analyses in ML and BI show similar results (Fig 1; see also S1 and S2 Figs for details), which only differ by the position of some outgroups and the placement of two *Spodoptera* species (*S. apertura* and *S. pecten*). In both ML and BI analyses, the genus *Spodoptera* is recovered monophyletic. Support for *Spodoptera* monophyly was higher for the ML tree (BV of 95%) in comparison to the BI tree (PP of 0.94). The phylogenies are overall not resolved, except for the terminal nodes. Support values are equally high for the nodes leading to morphospecies (BV  $\geq$  70% for 23 out of the 27 corresponding nodes under ML; PP  $\geq$  0.95 for 21 out of the 27 corresponding nodes under BI).

Four of the 27 *Spodoptera* morphospecies (*S. cosmiodes*, *S. descoinsi*, *S. marima* and *S. ornithogalli*) are consistently recovered paraphyletic in all analyses. Out of the nine sampled *S. descoinsi* individuals (all from French Guiana), seven of them constitute a well-supported clade, sister to *S. evanida* Schaus, 1914 (specimens of *S. evanida* were collected in French Guiana and Peru). The two remaining specimens identified as *S. descoinsi* (voucher codes B19 and LSU30) are grouped in a moderately to highly supported clade (BV of 88%, PP of 0.87) that includes all sampled *S. cosmiodes* individuals (from Brazil and French Guiana). Regarding *S. marima* and *S. ornithogalli*, the four sampled specimens of *S. marima* (from French Guiana and Venezuela) are mixed with the 18 sampled specimens of *S. ornithogalli* (from Canada, Dominican Republic, Guatemala, French Guiana and USA) in a well-supported clade (BV of 100%, PP of 1.0).

Two distinct and well-supported clades were inferred for *S. frugiperda* (BV of 100 and PP of 1.0). A first clade (58 specimens) includes all the specimens that have been assigned to the 'rice form' in the studies of Nagoshi *et al.*, [127] and Kergoat *et al.*, [85] whereas the other one (43 specimens) includes all the specimens previously assigned to the 'corn form'. Two distinct and well-supported clades were also recovered for *S. mauritia*. A first clade (BV of 96%, PP of 1.0) groups three specimens collected in the Réunion Island that belong to the nominate form (*S. m. mauritia*) distributed in Madagascar and neighboring islands (Comoro, Mauritius and Réunion). A second clade (BV of 98%, PP of 1.0) groups five specimens collected in Australia (KF389305), Japan (AB733407, AB733408 and AB733409) and Papua New Guinea (voucher code B152) that belong to *S. m. acronyctoides*, which is distributed in the Oriental, Indo-Australian and Pacific regions.



**Fig 1. COI-based phylogenetic relationships of *Spodoptera* species.** The tree on the left summarizes the results of ML analyses while the tree on the right summarizes the results of BI analyses. Black dots indicate nodes supported by bootstrap values > 70% (ML tree) or supported by posterior probability > 0.95 (BI tree).

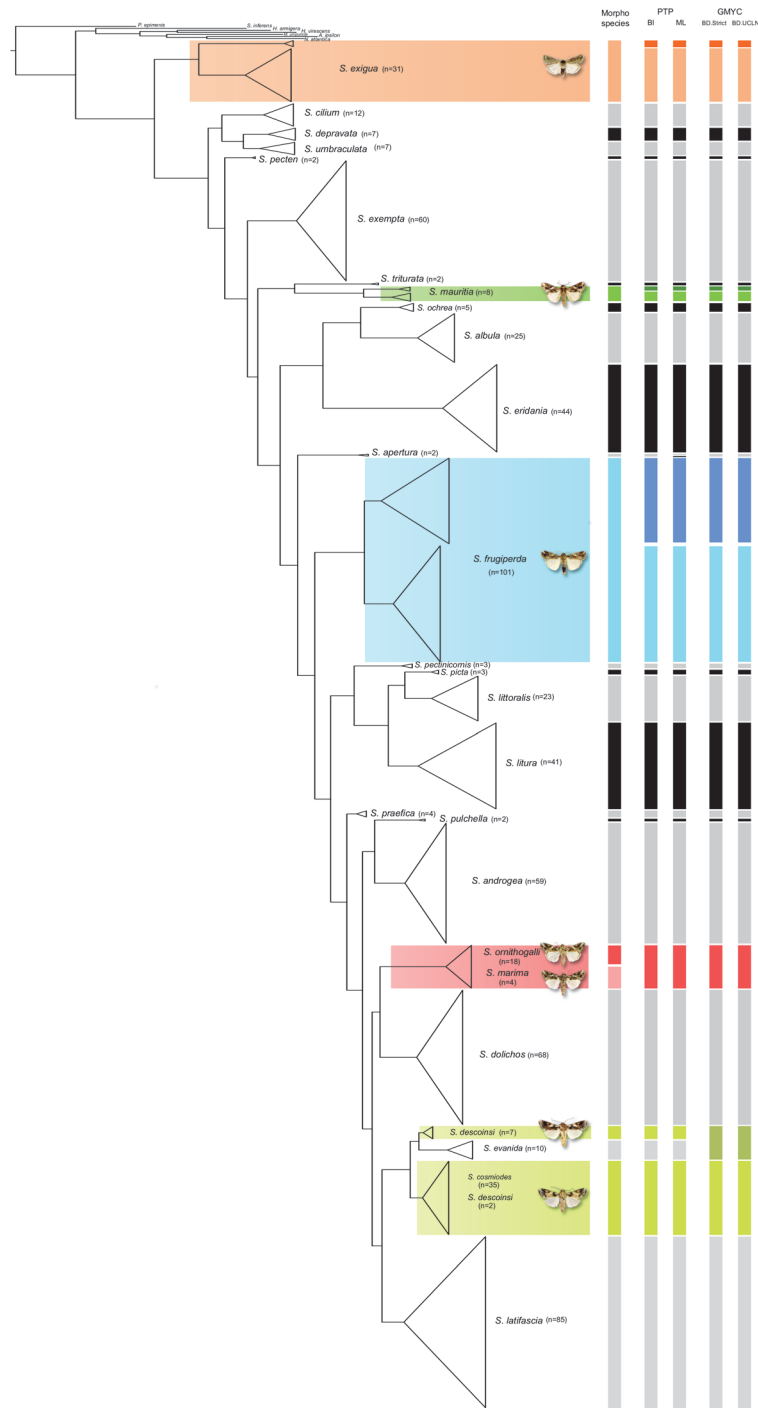
doi:10.1371/journal.pone.0122407.g001

## Molecular species delimitations

The results of phylogenetic molecular species delimitations were compared to morphological assignments that follow the checklist of species provided by Pogue [76].

Regarding the PTP analyses, at least 29 putative species clusters were recovered for the 67 specimens sampled from 27 *Spodoptera* morphospecies (Fig 2, S3 and S4 Figs and S3 Table). 30 putative species clusters were inferred for the analyses based on the best-fit ML tree (S3 Fig) while 29 putative species clusters were inferred for the analyses based on the BI majority-rule consensus topology (S4 Fig). Two distinct putative species clusters were consistently found for the following three species: *S. exigua*, *S. frugiperda* and *S. mauritia*. In addition the two individuals of *S. apertura* were also recovered as distinct putative species in the analyses based on the ML tree. Regarding *S. exigua*, a putative species cluster groups the four sampled Australian specimens (KF522648, KF522649, KF522650 and KF522651) whereas a second one groups the remaining 27 *S. exigua* specimens. For *S. frugiperda* the two putative species clusters consist of 43 and 58 specimens, respectively. The smaller FAW cluster groups all individuals that have





**Fig 2. Putative species clusters corresponding to: (i) morphological delineations (column 1); (ii) PTP analyses using either the majority-rule consensus topology resulting from the BI analyses (column 2) or the best tree from the ML analyses (column 3); (iii) GMYC analyses based either on a strict clock and a BD model (column 4) or on a UCLN clock and a BD model (column 5).** The reference tree used here corresponds to the tree resulting from the BI analyses carried out with MrBayes.

doi:10.1371/journal.pone.0122407.g002

been assigned to the ‘corn form’ by previous studies [85,127] whereas the bigger FAW cluster groups all individuals previously assigned to the ‘rice form’ [85,127]. For *S. mauritia* the two

putative species clusters distinguish the specimens belonging to *S. m. mauritia* (three individuals collected in the Réunion Island) with the specimens belong to *S. m. acronyctoides* (five individuals collected in Australian, Japan and Papua New Guinea). All individuals belonging to *S. marima* and *S. ornithogalli* are lumped in one putative species cluster encompassing 22 specimens (18 for *S. ornithogalli* and four *S. marima*). Concerning *S. cosmiodes* and *S. descoinsi*, the PTP species delimitation recovered two putative species clusters (see [S4 Fig](#)). A first potential species cluster is made of seven *S. descoinsi* individuals, which are sister to the clade corresponding to *S. evanida*. A second cluster encompasses all *S. cosmiodes* individuals plus two *S. descoinsi* specimens.

For the GMYC procedure, the same putative species clusters were inferred for the analyses based either on a strict clock and BD model or on a UCLN clock and BD model (see [Fig 2](#), [S5](#) and [S6 Figs](#) and [S3 Table](#)). 28 putative species clusters were recovered, with a confidence interval of 27–31 for the tree based on a strict clock and BD model and a confidence interval of 27–30 for the tree based on a UCLN clock and BD model. In comparison with the PTP analyses, the exact same putative species clusters were inferred with the exception of a larger cluster which groups a clade of seven *S. descoinsi* individuals with the clade corresponding to *S. evanida* (see [Fig 2](#) and [S3 Table](#)). When examining the taxa for which changes of status are suggested we found out that most changes are statistically supported (see [S5](#) and [S6 Figs](#)). It is the case of the grouping of *S. marima* with *S. ornithogalli* and of the splits of *S. exigua*, *S. frugiperda* and *S. mauritia*. The only exception is the case of the grouping of the seven *S. descoinsi* individuals with the clade corresponding to *S. evanida*, which is not statistically supported.

## Discussion

### A cautionary tale of consistency

The results of our phylogenetic species delimitations analyses are remarkably congruent, as they recover the same species clusters (except for the case of *S. apertura* in one of the PTP analyses and the case of *S. descoinsi* and *S. evanida* in one of the GMYC analyses) whatever the set of parameters or methods used. The number of species clusters inferred using PTP procedures also falls well within the confidence interval of the GMYC analyses (27–31 and 27–30 for the strict clock/BD model and UCLN clock/BD model associations, respectively). Although our study may give the impression that the results of species discovery procedures are expected to be always consistent whatever the models and sets of parameters used, we would like to insist on the fact that reliable and consistent results cannot be always achieved. Several studies have clearly highlighted the fact that most molecular species delimitation approaches (including tree-based species delimitation procedures) are highly susceptible to multiple biases or to the way the analyses are parameterized (see the review of Carstens *et al.*, [58]). For instance, model performances are known to be extremely sensitive to biases such as insufficient or unbalanced sampling [31,34], heterogeneous rates of gene evolution [128], incomplete lineage sorting, or hybridization after introgression events [129]. Though rarely look upon, tree building procedures also matter, as different methods and sets of parameters can potentially yield very distinct topologies, which will likely generate contrasting putative species clusters. For example, a potential source of discrepancy is the estimation of branch lengths, as branch length estimates are known to be sensitive to the choice of substitution models [130–132] or partitioning strategies [133,134]. It is especially the case in phylogenetic analyses that use multiple partitions and/or complex models, for which over-parameterization can potentially bias branch length estimates [134,135]. In addition, it has been recently demonstrated [136] that branch length priors (within a Bayesian framework) can significantly impact branch length estimation, with shorter priors generating shorter branch lengths and longer priors generating longer branch lengths.

Another potential source of discrepancy is the choice and parameterization of the ultrametricization procedures for methods (such as GMYC) that require ultrametric trees as input trees. In the study of Astrin *et al.*, [103] on cryptorhynchine weevils (Coleoptera) the authors used 21 distinct sets of parameters and methods. They showed that the number of putative species clusters inferred using GMYC could vary drastically with numbers varying from 5 to 564 depending on the choice of methods and parameters. Similarly Tang *et al.*, [110] highlighted the fact that the branch smoothing procedures are a potential source of biases for the approaches that require ultrametric trees.

In summary all these studies underline that molecular species delimitation approaches should not be used blindly. They nonetheless constitute powerful tools that can be effectively used in a concerted way to assess species boundaries (e.g. [137]). In our study, a high level of consistency was likely achieved because of the size of our dataset and because we carefully followed some of the recommendations of Tang *et al.*, [110]. Because the focus of our study was to reassess *Spodoptera* species boundaries, and not to explore the impact of tree building procedures on molecular species delimitations, we feel that our analytical pipeline is appropriate and allows us to discuss with some confidence the ambiguous species status of several taxa.

### *Spodoptera* species boundaries, a reappraisal

A clear pattern is evidenced for the species that is the main focus of our study, *Spodoptera frugiperda*. Individuals are separated into two clusters that likely correspond to the two known host-forms (rice and corn) of *S. frugiperda*. Both PTP and GMYC analyses indicate that the level of genetic differentiation exhibited by the two host-forms is compatible with a potential sister-species status, with a significant statistical support under the GMYC procedure. This result is in agreement with the results of several studies that have highlighted the existence of pre-zygotic and postzygotic isolation between the two host-forms (Table 1). Different prezygotic isolation mechanisms have been found, including differences in the composition of females' pheromones [78,138], allochronism in mating activity between the two strains [79,139] and oviposition preferences [94,140]. Regarding postzygotic isolation, the success of mating between the two strains remains highly controversial. On the one hand Pashley and Martin [141] and Dumas *et al.*, [142] have observed unidirectional mating between corn females and rice males while the reciprocal cross gave viable offsprings. Furthermore, in backcrosses the hybrid

**Table 1. List of evidences arguing in favor of a high level of differentiation between the two FAW strains.**

	Suitability	References
<b>Pre-zygotic barrier</b>		
Habitat isolation	+ / -	Whitford <i>et al.</i> , [140] Meagher <i>et al.</i> , [94] Juárez <i>et al.</i> , [91]
Temporal isolation	++	Schöfl <i>et al.</i> , [79,139]
Behavioral isolation	++	Groot <i>et al.</i> , [78] Lima and McNeil [138]
Unidirectional mating	+/-	Pashley and Martin [141] Dumas <i>et al.</i> , [142]
<b>Post-zygotic barrier</b>		
Reduction of hybrid fertility and reduction of hybrid female numbers	+	Velásquez-Vélez <i>et al.</i> , [146]
<b>Genetic differentiation</b>		
Phylogenetic analyses	++	Kergoat <i>et al.</i> , [85]

As indicated by the combination of pros and cons some results are more or less contradictory.

doi:10.1371/journal.pone.0122407.t001

females mated with low success with their brothers but not at all with males of either parental strain [140,141,143]. On the other hand, another study has shown that the two strains crossed successfully in both directions [144]. The latter is supported by the fact that a high proportion of hybrid has been evidenced in several surveys of natural populations [90,145]. Finally, a post-zygotic isolation for several life-history traits in both host-forms has been also evidenced by Velasquez-Velez *et al.*, [146] who identified a reduction of the number of hybrid females and a reduction in hybrid fertility in *S. frugiperda*. Taken altogether all these studies suggest that both host-forms are situated somewhere in between a ‘continuum’ of speciation [147]. In this context, the results of our study tend to favour the hypothesis that the two host-forms are well beyond the early steps of speciation as they present a level of genetic differentiation which is comparable with those observed between other distinct *Spodoptera* species.

In the case of *Spodoptera mauritia*, the results of all phylogenetic species delimitation procedures suggested that Western (*S. m. mauritia* sensu Fletcher [148]) and Eastern (*S. m. acronyctoides* sensu Fletcher [148]) populations should be considered as distinct species. Though we cannot exclude the hypothesis of a possible analytical bias resulting from our limited sampling (only three individuals from La Reunion for *S. m. mauritia* and five individuals from Australia, Japan and Papua New Guinea), the suggested split is nonetheless statistically supported. From a morphological point of view, several authors (e.g. Fletcher [148]) noted differences in forewing coloration, where the conspicuous white areas of the forewing of Western populations are reduced in extent in Eastern populations. However the examination of long series of specimens from the two distribution areas by Brown and Dewhurst [80] did not reveal marked differences between putative subspecies. Additional studies are thus definitely required here to precise the status of both entities, such as comparisons of genitalia or pheromone compounds in female.

Regarding *Spodoptera marima* and *Spodoptera ornithogalli*, for which only few morphological (hindwing coloration and the lack of sexual dimorphism in *S. marima* [81]); differences exist, both analyses merge them into a single species cluster (with a significant statistical support under GMYC), hence providing more support to put these taxa into synonymy [85]. Because the two species occur in different geographic areas—*S. marima* is only found in the Western and Eastern Neotropics whereas *S. ornithogalli* is found in the Northern Neotropics and in the South, Western and Eastern Nearctic [76]—they could be considered as distinct subspecies of *S. ornithogalli* (due to priority, as *S. ornithogalli* was described before *S. marima*).

Interestingly our analyses suggest that *Spodoptera exigua*, a taxon with no ambiguous status, seems well differentiated, and may correspond to two distinct species. 27 of the 31 sampled specimens (including specimens from Canada, Egypt, Germany, Kenya, India, Japan, Thailand and United States of America) constitute a first putative species cluster whereas the four specimens from Australia constitute another one (note that no Australian samples were included in the study of Kergoat *et al.*, [85]). This result is also statistically supported under GMYC and does not seem artefactual given the marked level of genetic differentiation between the two clades. It is also supported by additional researches on the Barcoding of life database (BOLD; available at <http://www.boldsystems.org/>); 81 *S. exigua* specimens from Australia are grouped into a distinct barcode cluster (BOLD:AAA6645) distinct from another barcode cluster (BOLD:AAA6644) grouping all remaining *S. exigua* individuals (n = 281). Obviously this result requires more investigation in order to determine whether these specimens correspond to a new species with marked morphological differences or to a case of cryptic species complex.

For *Spodoptera apertura*, only one of the four distinct sets of analyses (PTP using the ML tree; S3 Fig) recovers two distinct species clusters for the two sampled specimens of the species. We suspect that this result is artefactual; it possibly results from an artefact in the estimation of branch lengths under ML, where the two terminal branches leading to both individuals are really unbalanced (S3 Fig) whereas there are balanced under BI (S4 Fig). Insufficient sampling

(only two specimens from Australia were sequenced for this species) could also have caused this likely error.

The situation is more complex in the case of *Spodoptera cosmiodes* and *Spodoptera descoinsi*, two taxa for which marked morphological and biological differences exist [76,77]. Both phylogenetic species delimitation procedures suggested the existence of two distinct species clusters. Analyses following the GMYC procedure also included representatives of *S. evanida* in one of the two clusters (the one with seven specimens *S. descoinsi*) but this grouping seems artefactual as the two species are morphologically not related [76]; in addition a closer examination of the GMYC output indicates that this grouping is not statistically supported. If we consider the remaining specimens, we can distinguish two species clusters, one that groups seven *S. descoinsi* and another that groups all ( $n = 35$ ) *S. cosmiodes* individuals plus two representatives of *S. descoinsi*. To precise the status of these two individuals, additional studies are likely required; we advocate for the use of species validation procedures (with packages such as BPP [55] or SpedeSTEM [56]), using more specimens and a multi locus dataset. By doing so, it will be possible to better estimate the actual evolutionary lineages that compose the two species.

## Conclusions

This study constitutes another case study that underlines the interest and effectiveness of fast species discovery procedures; the achieved results are congruent and reliable, irrespective of the set of parameters and phylogenetic models applied, even though we only relied on a single locus dataset. Our results unravel at least three potential new species clusters (for *S. exigua*, *S. frugiperda* and *S. mauritia*) and also support the synonymy of *S. marima* with *S. ornithogalli*. Though these redefined species boundaries have to be considered cautiously, they nonetheless constitute a new line of evidence that may fuel the debate on *Spodoptera* species boundaries and inspire future studies on species such as the beet armyworm *S. exigua*, for which a potential cryptic diversity was not expected. In contrast, the case of *S. descoinsi* is clearly more complex as illustrated by the inconsistencies between the results of PTP and GMYC procedures. Here further studies relying on additional markers and species validation procedures will be necessary to precise the status of this species.

## Supporting Information

**S1 Fig. Phylogram (Best-fit maximum likelihood tree) resulting from the RAxML analyses.**

Support values are provided on major nodes (only  $BV \geq 50\%$  are shown).

(PDF)

**S2 Fig. Phylogram resulting from the MrBayes analyses.** Support values are provided on major nodes (only  $PP \geq 0.5$  are shown).

(PDF)

**S3 Fig. Results of the PTP analyses based on the ML topology.** Putative species clusters are indicated using transitions between black-coloured to red-coloured branches.

(PDF)

**S4 Fig. Results of the PTP analyses based on the BI topology.** Putative species clusters are indicated using transitions between black-coloured to red-coloured branches.

(PDF)

**S5 Fig. Results of the GMYC analyses based on BEAST analyses with a strict clock model.**

Putative species clusters are indicated using transitions between black-coloured to red-coloured branches. The inter- and intraspecific portions of the tree are divided with a dotted line (95%



confidence intervals are figured using thinner dotted lines).  
(PDF)

**S6 Fig. Results of the GMYC analyses based on BEAST analyses with an UCLN clock model.** Putative species clusters are indicated using transitions between black-coloured to red-coloured branches. The inter- and intraspecific portions of the tree are divided with a dotted line (95% confidence intervals are figured using thinner dotted lines).  
(PDF)

**S1 Table. Taxon sampling.** Sequences generated in a previous study of our research group are highlighted using “\*” whereas newly generated sequences are highlighted using “\*\*”. The Democratic Republic of the Congo was abbreviated using DRC. When the country of origin is known we also provide the corresponding ISO 3166 alpha-3 code. We used the following abbreviations for the repository institutes and collections: **ACG**: Área de Conservación Guanacaste—Centro de Investigación y Estaciones Biológicas Programa de Educación Biológica, Costa Rica; **ANIC**: Australian National Insect Collection, Australia; **BIO**: Biodiversity Institute of Ontario, Canada; **BSCZ**: Bavarian State Collection of Zoology, Munich, Germany; **CBGP**: INRA—Centre de Biologie pour la Gestion des Populations, Montferrier/Lez, France; **CLS**: College of Life Science, Capital Normal University, Beijing, China; **CIRN**: CIRN, University of the Azores, Portugal; **CTAG**: Center for Theoretical and Applied Genetics, New Brunswick, USA; **EMBRAPA**: Embrapa National Soybean Research Center, Brazil; **FERA**: Food and Environment Research Agency, York, UK; **GSA**: Graduate School of Agriculture, Kita-Ku, Japan; **HUT**: Hefei University of Technology, China; **LEC**: Lancaster Environment Centre, UK; **MNHN**: Muséum National d'Histoire Naturelle, Paris, France; **NIAES**: National Institute for Agro-Environmental Sciences, Tsukuba, Japan; **NIBGE**: National Institute for Biotechnology and Genetic Engineering, Pakistan; **NIMBB**: National Institute of Molecular Biology and Biotechnology, Los Banos, Philippines; **NRIC**: Natural Resources Inventory Center, Tsukuba, Japan; **PAU**: Punjab Agricultural University, India; **PSCAS**: Penn State College of Agricultural Sciences, USA; **RCG**: Research Collection of Theo Gruenewald, Germany; **RCH**: Research Collection of Alfred Haslberger, Munich, Germany; **RCJH**: Research Collection of D.H. Janzen & W. Hallwachs, USA; **RCW**: Research Collection of Jeremy deWaard, Guelph, Canada. **SI**: Smithsonian Institution, Washington, USA; **TAU**: Tamilnadu Agricultural University, India; **UBC**: University of British Columbia, Vancouver, Canada; **UFP**: Universidade Federal do Paraná, Curitiba, Brazil; **UM**: University of Maryland, USA; **UR**: Université de Rouen, Rouen, France; **USDA**: USDA ARS, Gainesville, USA; **YU**: Yangzhou University, China; **ZIQ**: Zuhai Inspection and Quarantine bureau, China.  
(DOCX)

**S2 Table. Results of PartitionFinder analyses for the COI dataset.** Three partitions were specified (one per codon position). Selected models and partitions based on the AICc are figured on the left whereas selected models and partitions based on the BIC are figured on the right.  
(DOCX)

**S3 Table. Putative species clusters.** The geographic origin and assignment to putative species clusters is provided for each *Spodoptera* specimen. Similarly to the sidebars presented on [Fig 2](#), we have used one column per set of analyses (PTP with RAxML, PTP with MrBayes, GMYC with BEAST (strict clock) and GMYC with BEAST (UCLN clock)). For more clarity, putative species clusters also are highlighted using a combination of numbers and distinct shades of grey.  
(DOCX)

## Acknowledgments

We would like to thank Diego Fontaneto and two anonymous reviewers for their numerous constructive comments on a previous version of the manuscript. Some of the molecular data used in this work were produced through technical facilities of the "Laboratoire d'Excellence—Centre Méditerranéen de l'Environnement et de la Biodiversité" (LabEx—CeMEB), Montpellier, France. The authors also wish to thank A. Dehne Garcia for his help on the CBGP HPC computational platform.

## Author Contributions

Conceived and designed the experiments: PD GJK. Performed the experiments: PD ALC. Analyzed the data: PD GJK. Contributed reagents/materials/analysis tools: BLR EA JB JFS. Wrote the paper: PD GJK JFS JB EA BLR ALC. Provided new samples: JB.

## References

1. Wilson EO (2004) Taxonomy as a fundamental discipline. *Philos Trans R Soc Lond B Biol Sci* 359: 739–739. doi: [10.1098/rstb.2003.1440](https://doi.org/10.1098/rstb.2003.1440) PMID: [15253362](https://pubmed.ncbi.nlm.nih.gov/15253362/)
2. Joppa LN, Roberts DL, Myers N, Pimm SL (2011) Biodiversity hotspots house most undiscovered plant species. *Proc Natl Acad Sci USA* 108: 13171–13176. doi: [10.1073/pnas.1109389108](https://doi.org/10.1073/pnas.1109389108) PMID: [21730155](https://pubmed.ncbi.nlm.nih.gov/21730155/)
3. Mora C, Tittensor D, Adl S, Simpson A, Worm B (2011) How many species are there on Earth and in the ocean? *PLoS Biol* 9. doi: [10.1371/journal.pbio.1001127](https://doi.org/10.1371/journal.pbio.1001127)
4. Scheffers BR, Joppa LN, Pimm SL, Laurance WF (2012) What we know and don't know about Earth's missing biodiversity. *Trends Ecol Evol* 27: 501–510. doi: [10.1016/j.tree.2012.05.008](https://doi.org/10.1016/j.tree.2012.05.008) PMID: [22784409](https://pubmed.ncbi.nlm.nih.gov/22784409/)
5. Godfray HCJ (2002) Challenges for taxonomy. *Nature* 417: 17–19. doi: [10.1038/417017a](https://doi.org/10.1038/417017a) PMID: [11986643](https://pubmed.ncbi.nlm.nih.gov/11986643/)
6. Mace GM (2004) The role of taxonomy in species conservation. *Philos Trans R Soc Lond B Biol Sci* 359: 711–719. doi: [10.1098/rstb.2003.1454](https://doi.org/10.1098/rstb.2003.1454) PMID: [15253356](https://pubmed.ncbi.nlm.nih.gov/15253356/)
7. Padial J, De la Riva I (2009) Integrative taxonomy reveals cryptic Amazonian species of *Pristimantis* (Anura: Strabomantidae). *Zool J Linn Soc* 155: 97–122. doi: [10.1111/j.1096-3642.2008.00424.x](https://doi.org/10.1111/j.1096-3642.2008.00424.x)
8. Bond JE, Sierwald P (2002) Cryptic speciation in the *Anadenobolus excisus* millipede species complex on the island of Jamaica. *Evolution* 56: 1123–1135. doi: [10.1111/j.0014-3820.2002.tb01426.x](https://doi.org/10.1111/j.0014-3820.2002.tb01426.x) PMID: [12144014](https://pubmed.ncbi.nlm.nih.gov/12144014/)
9. Collin R (2003) The utility of morphological characters in gastropod phylogenetics: an example from the Calyptraeidae. *Biol J Linn Soc* 78: 541–593. doi: [10.1046/j.0024-4066.2002.00166.x](https://doi.org/10.1046/j.0024-4066.2002.00166.x)
10. Álvarez N, Hossaert-McKey M, Rasplus J-Y, McKey D, Mercier L, Soldati L, et al. (2005) Sibling species of bean bruchids: a morphological and phylogenetic study of *Acanthoscelides obtectus* Say and *Acanthoscelides obvelatus* Bridwell. *J Zool Syst Evol Res* 43: 29–37. doi: [10.1111/j.1439-0469.2004.00286.x](https://doi.org/10.1111/j.1439-0469.2004.00286.x)
11. Huber BA, Rheims CA, Brescovit AD (2005) Speciation without changes in genital shape: a case study on Brazilian pholcid spiders (Araneae: Pholcidae). *Zool Anz—J Comp Zool* 243: 273–279. doi: [10.1016/j.jcz.2004.12.001](https://doi.org/10.1016/j.jcz.2004.12.001) PMID: [23907846](https://pubmed.ncbi.nlm.nih.gov/23907846/)
12. Kodandaramaiah U, Weingartner E, Jank N, Leski M, Slove J, Warren A, et al. (2012) Investigating concordance among genetic data, subspecies circumscriptions and hostplant use in the Nymphalid butterfly *Polygonia faunus*. *PLoS ONE* 7: e41048. doi: [10.1371/journal.pone.0041058](https://doi.org/10.1371/journal.pone.0041058) PMID: [22815908](https://pubmed.ncbi.nlm.nih.gov/22815908/)
13. Kergoat GJ, Álvarez N (2008) Assessing the phylogenetic usefulness of a previously neglected morphological structure through elliptic Fourier analyses: a case study in *Bruchus* seed-beetles (Coleoptera: Chrysomelidae: Bruchinae). *Syst Entomol* 33: 289–300. doi: [10.1111/j.1365-3113.2007.00405.x](https://doi.org/10.1111/j.1365-3113.2007.00405.x)
14. Gentile G, della Torre A, Maegga B, Powell JR, Caccone A (2002) Genetic differentiation in the African Malaria vector, *Anopheles gambiae* s.s., and the problem of taxonomic status. *Genetics* 161: 1561–1578. PMID: [12196401](https://pubmed.ncbi.nlm.nih.gov/12196401/)

15. Pringle A, Baker DM, Platt JL, Wares JP, Latgé JP, Taylor JW (2005) Cryptic speciation in the cosmopolitan and clonal human pathogenic fungus *Aspergillus fumigatus*. *Evolution* 59: 1886–1899. doi: [10.1111/j.0014-3820.2005.tb01059.x](https://doi.org/10.1111/j.0014-3820.2005.tb01059.x) PMID: [16261727](https://pubmed.ncbi.nlm.nih.gov/16261727/)
16. Armstrong K, Ball S (2005) DNA barcodes for biosecurity: invasive species identification. *Philos Trans R Soc B Biol Sci* 360: 1813–1823. doi: [10.1098/rstb.2005.1713](https://doi.org/10.1098/rstb.2005.1713) PMID: [16214740](https://pubmed.ncbi.nlm.nih.gov/16214740/)
17. Roe AD, Sperling FAH (2007) Population structure and species boundary delimitation of cryptic *Diorcyctria* moths: an integrative approach. *Mol Ecol* 16: 3617–3633. doi: [10.1111/j.1365-294X.2007.03412.x](https://doi.org/10.1111/j.1365-294X.2007.03412.x) PMID: [17845435](https://pubmed.ncbi.nlm.nih.gov/17845435/)
18. Ross KG, Gotzek D, Ascunce MS, Shoemaker DD (2009) Species delimitation: a case study in a problematic ant taxon. *Syst Biol* 59: 162–164. doi: [10.1093/sysbio/syp089](https://doi.org/10.1093/sysbio/syp089) PMID: [20525628](https://pubmed.ncbi.nlm.nih.gov/20525628/)
19. Frey J, Guillen L, Frey B, Samietz J, Rull J, Aluja M (2013) Developing diagnostic SNP panels for the identification of true fruit flies (Diptera: Tephritidae) within the limits of COI-based species delimitation. *BMC Evol Biol* 13: 106. doi: [10.1186/1471-2148-13-106](https://doi.org/10.1186/1471-2148-13-106) PMID: [23718854](https://pubmed.ncbi.nlm.nih.gov/23718854/)
20. Blaxter ML (2004) The promise of a DNA taxonomy. *Philos Trans R Soc Lond B Biol Sci* 359: 669–679. doi: [10.1098/rstb.2003.1447](https://doi.org/10.1098/rstb.2003.1447) PMID: [15253352](https://pubmed.ncbi.nlm.nih.gov/15253352/)
21. Dinc V, Zakharov EV, Hebert PDN, Vila R (2011) Complete DNA barcode reference library for a country's butterfly fauna reveals high performance for temperate Europe. *Proc R Soc B Biol Sci* 278: 347–355. doi: [10.1098/rspb.2010.1089](https://doi.org/10.1098/rspb.2010.1089) PMID: [20702462](https://pubmed.ncbi.nlm.nih.gov/20702462/)
22. Hebert PDN, Gregory TR (2005) The promise of DNA barcoding for taxonomy. *Syst Biol* 54: 852–859. doi: [10.1080/10635150500354886](https://doi.org/10.1080/10635150500354886) PMID: [16243770](https://pubmed.ncbi.nlm.nih.gov/16243770/)
23. Hebert PDN, Ratnasingham S, de Waard JR (2003) Barcoding animal life: cytochrome c oxidase subunit 1 divergences among closely related species. *Proc R Soc Lond B Biol Sci* 270: S96–S99. doi: [10.1098/rsbl.2003.0025](https://doi.org/10.1098/rsbl.2003.0025)
24. Hebert PDN, Penton EH, Burns JM, Janzen DH, Hallwachs W (2004) Ten species in one: DNA barcoding reveals cryptic species in the neotropical skipper butterfly *Astraptes fulgerator*. *Proc Natl Acad Sci USA* 101: 14812–14817. doi: [10.1073/pnas.0406166101](https://doi.org/10.1073/pnas.0406166101) PMID: [15465915](https://pubmed.ncbi.nlm.nih.gov/15465915/)
25. Hebert PDN, Stoeckle MY, Zemlak TS, Francis CM (2004) Identification of birds through DNA barcodes. *PLoS Biol* 2: e312. doi: [10.1371/journal.pbio.0020312](https://doi.org/10.1371/journal.pbio.0020312) PMID: [15455034](https://pubmed.ncbi.nlm.nih.gov/15455034/)
26. Janzen DH, Hallwachs W, Blandin P, Burns JM, Cadiou J-M, Chacon I (2009) Integration of DNA barcoding into an ongoing inventory of complex tropical biodiversity. *Mol Ecol Resour* 9: 1–26. doi: [10.1111/j.1755-0998.2009.02628.x](https://doi.org/10.1111/j.1755-0998.2009.02628.x) PMID: [21564960](https://pubmed.ncbi.nlm.nih.gov/21564960/)
27. Prado BR, Pozo C, Valdez-Moreno M, Hebert PDN (2011) Beyond the colours: discovering hidden diversity in the Nymphalidae of the Yucatan peninsula in Mexico through DNA barcoding. *PLoS ONE* 6: e27776. doi: [10.1371/journal.pone.0027776](https://doi.org/10.1371/journal.pone.0027776) PMID: [22132140](https://pubmed.ncbi.nlm.nih.gov/22132140/)
28. Will KW, Mishler BD, Wheeler QD (2005) The perils of DNA barcoding and the need for integrative taxonomy. *Syst Biol* 54: 844–851. doi: [10.1080/10635150500354878](https://doi.org/10.1080/10635150500354878) PMID: [16243769](https://pubmed.ncbi.nlm.nih.gov/16243769/)
29. Gompert Z, Nice CC, Fordyce JA, Forister ML, Shapiro AM (2006) Identifying units for conservation using molecular systematics: the cautionary tale of the Kerner blue butterfly. *Mol Ecol* 15: 1759–1768. doi: [10.1111/j.1365-294X.2006.02905.x](https://doi.org/10.1111/j.1365-294X.2006.02905.x) PMID: [16689896](https://pubmed.ncbi.nlm.nih.gov/16689896/)
30. Meier R, Shiyang K, Vaidya G, Ng PKL (2006) DNA barcoding and taxonomy in Diptera: a tale of high intraspecific variability and low identification success. *Syst Biol* 55: 715–728. doi: [10.1080/10635150600969864](https://doi.org/10.1080/10635150600969864) PMID: [17060194](https://pubmed.ncbi.nlm.nih.gov/17060194/)
31. Wiemers M, Fiedler K (2007) Does the DNA barcoding gap exist?—a case study in blue butterflies (Lepidoptera: Lycaenidae). *Front Zool* 4: 8. doi: [10.1186/1742-9994-4-8](https://doi.org/10.1186/1742-9994-4-8) PMID: [17343734](https://pubmed.ncbi.nlm.nih.gov/17343734/)
32. Whitworth T, Dawson R, Magalon H, Baudry E (2007) DNA barcoding cannot reliably identify species of the blowfly genus *Protocalliphora* (Diptera: Calliphoridae). *Proc R Soc B Biol Sci* 274: 1731–1739. doi: [10.1098/rspb.2007.0062](https://doi.org/10.1098/rspb.2007.0062) PMID: [17472911](https://pubmed.ncbi.nlm.nih.gov/17472911/)
33. Moritz C, Cicero C (2004) DNA barcoding: promise and pitfalls. *PLoS Biol* 2: e354. doi: [10.1371/journal.pbio.0020354](https://doi.org/10.1371/journal.pbio.0020354) PMID: [15486587](https://pubmed.ncbi.nlm.nih.gov/15486587/)
34. Meyer CP, Paulay G (2005) DNA barcoding: error rates based on comprehensive sampling. *PLoS Biol* 3: e422. doi: [10.1371/journal.pbio.0030422](https://doi.org/10.1371/journal.pbio.0030422) PMID: [16336051](https://pubmed.ncbi.nlm.nih.gov/16336051/)
35. Hickerson MJ, Meyer CP, Moritz C (2006) DNA barcoding will often fail to discover new animal species over broad parameter space. *Syst Biol* 55: 729–739. doi: [10.1080/10635150600969898](https://doi.org/10.1080/10635150600969898) PMID: [17060195](https://pubmed.ncbi.nlm.nih.gov/17060195/)
36. Lohse K (2009) Can mtDNA barcodes be used to delimit species? A response to Pons et al. (2006). *Syst Biol* 58: 439–442. doi: [10.1093/sysbio/syp039](https://doi.org/10.1093/sysbio/syp039) PMID: [20525596](https://pubmed.ncbi.nlm.nih.gov/20525596/)
37. Galtier N, Nabholz B, Glémin S, Hurst GD (2009) Mitochondrial DNA as a marker of molecular diversity: a reappraisal. *Mol Ecol* 18: 4541–4550. doi: [10.1111/j.1365-294X.2009.04380.x](https://doi.org/10.1111/j.1365-294X.2009.04380.x) PMID: [19821901](https://pubmed.ncbi.nlm.nih.gov/19821901/)

38. Hendrich L, Ribera I, Balke M (2010) Mitochondrial Cox1 sequence data reliably uncover patterns of insect diversity but suffer from high lineage-idiosyncratic error rates. PLoS ONE 5: e14448. doi: [10.1371/journal.pone.0014448](https://doi.org/10.1371/journal.pone.0014448) PMID: [21203427](https://pubmed.ncbi.nlm.nih.gov/21203427/)
39. Van Velzen R, Weitschek E, Felici G, Bakker FT (2012) DNA barcoding of recently diverged species: relative performance of matching methods. PLoS ONE 7: e30490. doi: [10.1371/journal.pone.0030490](https://doi.org/10.1371/journal.pone.0030490) PMID: [22272356](https://pubmed.ncbi.nlm.nih.gov/22272356/)
40. Will KW, Rubinoff D (2004) Myth of the molecule: DNA barcodes for species cannot replace morphology for identification and classification. Cladistics 20: 47–55. doi: [10.1111/j.1096-0031.2003.00008.x](https://doi.org/10.1111/j.1096-0031.2003.00008.x)
41. Ebach MC, Holdrege C (2005) DNA barcoding is no substitute for taxonomy. Nature 434: 697–697. doi: [10.1038/434697b](https://doi.org/10.1038/434697b) PMID: [15815603](https://pubmed.ncbi.nlm.nih.gov/15815603/)
42. Rubinoff D, Cameron S, Will K (2006) A genomic perspective on the shortcomings of mitochondrial DNA for “barcoding” identification. J Hered 97: 581–594. doi: [10.1093/jhered/esl036](https://doi.org/10.1093/jhered/esl036) PMID: [17135463](https://pubmed.ncbi.nlm.nih.gov/17135463/)
43. Dupuis JR, Roe AD, Sperling FAH (2012) Multi-locus species delimitation in closely related animals and fungi: one marker is not enough. Mol Ecol 21: 4422–4436. doi: [10.1111/j.1365-294X.2012.05642.x](https://doi.org/10.1111/j.1365-294X.2012.05642.x) PMID: [22891635](https://pubmed.ncbi.nlm.nih.gov/22891635/)
44. Padiá J, Miralles A, De la Riva I, Vences M (2010) The integrative future of taxonomy. Front Zool 7: 16. doi: [10.1186/1742-9994-7-16](https://doi.org/10.1186/1742-9994-7-16) PMID: [20500846](https://pubmed.ncbi.nlm.nih.gov/20500846/)
45. Gebiola M, Gómez-Zurita J, Monti MM, Navone P, Bernardo U (2012) Integration of molecular, ecological, morphological and endosymbiont data for species delimitation within the *Prigalio soemius* complex (Hymenoptera: Eulophidae). Mol Ecol 21: 1190–1208. doi: [10.1111/j.1365-294X.2011.05428.x](https://doi.org/10.1111/j.1365-294X.2011.05428.x) PMID: [22268975](https://pubmed.ncbi.nlm.nih.gov/22268975/)
46. Dayrat B (2005) Towards integrative taxonomy. Biol J Linn Soc 85: 407–415. doi: [10.1111/j.1095-8312.2005.00503.x](https://doi.org/10.1111/j.1095-8312.2005.00503.x)
47. Schlick-Steiner BC, Steiner FM, Seifert B, Stauffer C, Christian E, Crozier RH (2009) Integrative taxonomy: a multisource approach to exploring biodiversity. Annu Rev Entomol 55: 421–438. doi: [10.1146/annurev-ento-112408-085432](https://doi.org/10.1146/annurev-ento-112408-085432)
48. Yeates DK, Seago A, Nelson L, Cameron SL, Joseph L, Trueman JWH (2011) Integrative taxonomy, or iterative taxonomy? Syst Entomol 36: 209–217. doi: [10.1111/j.1365-3113.2010.00558.x](https://doi.org/10.1111/j.1365-3113.2010.00558.x)
49. Le Ru BP, Dulac CC, Toussaint E, Conlong D, Van den Berg J, Pallangyo B (2014) Integrative taxonomy of *Acrapex* stem borers (Lepidoptera, Noctuidae, Apameini): combining morphology and Poisson tree process analyses. Invertebr Syst 28: 451–475. doi: [10.1071/IS13062](https://doi.org/10.1071/IS13062)
50. Lumley LM, Sperling FAH (2010) Integrating morphology and mitochondrial DNA for species delimitation within the spruce budworm (*Choristoneura fumiferana*) cryptic species complex (Lepidoptera: Tortricidae). Syst Entomol 35: 416–428. doi: [10.1111/j.1365-3113.2009.00514.x](https://doi.org/10.1111/j.1365-3113.2009.00514.x)
51. Melville J, Smith K, Hobson R, Shoo L (2014) The role of integrative taxonomy in the conservation management of cryptic species: the taxonomic status of endangered earless dragons (Agamidae: *Tympanocryptis*) in the grasslands of Queensland, Australia. PLoS ONE 9: e101847. doi: [10.1371/journal.pone.0101847](https://doi.org/10.1371/journal.pone.0101847) PMID: [25076129](https://pubmed.ncbi.nlm.nih.gov/25076129/)
52. Rougerie R, Naumann S, Nässig WA (2011) Morphology and molecules reveal unexpected cryptic diversity in the enigmatic genus *Sinobirna* Bryk, 1944 (Lepidoptera: Saturniidae). PLoS ONE 7: e43920. doi: [10.1371/journal.pone.0043920](https://doi.org/10.1371/journal.pone.0043920)
53. O’Meara BC, Ané C, Sanderson MJ, Wainwright PC (2006) Testing for different rates of continuous trait evolution using likelihood. Evolution 60: 922–933. doi: [10.1111/j.0014-3820.2006.tb01171.x](https://doi.org/10.1111/j.0014-3820.2006.tb01171.x) PMID: [16817533](https://pubmed.ncbi.nlm.nih.gov/16817533/)
54. Pons J, Barraclough TG, Gomez-Zurita J, Cardoso A, Duran DP, Hazell S (2006) Sequence-based species delimitation for the DNA taxonomy of undescribed insects. Syst Biol 55: 595–609. doi: [10.1080/10635150600852011](https://doi.org/10.1080/10635150600852011) PMID: [16967577](https://pubmed.ncbi.nlm.nih.gov/16967577/)
55. Yang Z, Rannala B (2010) Bayesian species delimitation using multilocus sequence data. Proc Natl Acad Sci USA 107: 9264–9269. doi: [10.1073/pnas.0913022107](https://doi.org/10.1073/pnas.0913022107) PMID: [20439743](https://pubmed.ncbi.nlm.nih.gov/20439743/)
56. Ence DD, Carstens BC (2011) SpedeSTEM: a rapid and accurate method for species delimitation. Mol Ecol Resour 11: 473–480. doi: [10.1111/j.1755-0998.2010.02947.x](https://doi.org/10.1111/j.1755-0998.2010.02947.x) PMID: [21481205](https://pubmed.ncbi.nlm.nih.gov/21481205/)
57. Puillandre N, Lambert A, Brouillet S, Achaz G (2012) ABGD, Automatic Barcode Gap Discovery for primary species delimitation. Mol Ecol 21: 1864–1877. doi: [10.1111/j.1365-294X.2011.05239.x](https://doi.org/10.1111/j.1365-294X.2011.05239.x) PMID: [21883587](https://pubmed.ncbi.nlm.nih.gov/21883587/)
58. Carstens BC, Pelletier TA, Reid N, Satler JD (2013) How to fail at species delimitation. Mol Ecol 22: 4369–4383. doi: [10.1111/mec.12413](https://doi.org/10.1111/mec.12413) PMID: [23855767](https://pubmed.ncbi.nlm.nih.gov/23855767/)
59. Hambäck P, Weingartner E, Ericson L, Fors L, Cassel-Lundhagen A, Stenberg JA et al. (2013) Bayesian species delimitation reveals generalist and specialist parasitic wasps on *Galerucella* beetles

- (Chrysomelidae): sorting by herbivore or plant host. *BMC Evol Biol* 13: 92. doi: [10.1186/1471-2148-13-92](https://doi.org/10.1186/1471-2148-13-92) PMID: [23622105](https://pubmed.ncbi.nlm.nih.gov/23622105/)
60. Zhang J, Kapli P, Pavlidis P, Stamatakis A (2013) A general species delimitation method with applications to phylogenetic placements. *Bioinformatics* 29: 2869–2876. doi: [10.1093/bioinformatics/btt499](https://doi.org/10.1093/bioinformatics/btt499) PMID: [23990417](https://pubmed.ncbi.nlm.nih.gov/23990417/)
  61. De Queiroz K (2007) Species concepts and species delimitation. *Syst Biol* 56: 879–886. doi: [10.1080/10635150701701083](https://doi.org/10.1080/10635150701701083) PMID: [18027281](https://pubmed.ncbi.nlm.nih.gov/18027281/)
  62. Rannala B, Yang Z (2003) Bayes estimation of species divergence times and ancestral population sizes using DNA sequences from multiple loci. *Genetics* 164: 1645–1656. PMID: [12930768](https://pubmed.ncbi.nlm.nih.gov/12930768/)
  63. Knowles LL, Carstens BC (2007) Delimiting species without monophyletic gene trees. *Syst Biol* 56: 887–895. doi: [10.1080/10635150701701091](https://doi.org/10.1080/10635150701701091) PMID: [18027282](https://pubmed.ncbi.nlm.nih.gov/18027282/)
  64. Fujita MK, Leaché AD, Burbrink FT, McGuire JA, Moritz C (2012) Coalescent-based species delimitation in an integrative taxonomy. *Trends Ecol Evol* 27: 480–488. doi: [10.1016/j.tree.2012.04.012](https://doi.org/10.1016/j.tree.2012.04.012) PMID: [22633974](https://pubmed.ncbi.nlm.nih.gov/22633974/)
  65. Dupuis JR, Roe AD, Sperling FAH (2012) Multi-locus species delimitation in closely related animals and fungi: one marker is not enough. *Mol Ecol* 21: 4422–4436. doi: [10.1111/j.1365-294X.2012.05642.x](https://doi.org/10.1111/j.1365-294X.2012.05642.x) PMID: [22891635](https://pubmed.ncbi.nlm.nih.gov/22891635/)
  66. Funk DJ, Omland EK (2003) Species-level paraphyly and polyphyly: frequency, causes, and consequences, with insights from animal mitochondrial DNA. *Annu Rev Ecol Syst* 34: 397–423. doi: [10.1146/annurev.ecolsys.34.011802.132421](https://doi.org/10.1146/annurev.ecolsys.34.011802.132421)
  67. Hailer F, Kutschera VE, Hallstrom BM, Klassert D, Fain SR, Leonard JA, et al. (2012) Nuclear genomic sequences reveal that polar bears are an old and distinct bear lineage. *Science* 336:344–347. doi: [10.1126/science.1216424](https://doi.org/10.1126/science.1216424) PMID: [22517859](https://pubmed.ncbi.nlm.nih.gov/22517859/)
  68. Avise JC (2009) Phylogeography: retrospect and prospect. *J. Biogeogr.* 36: 3–15. doi: [10.1111/j.1365-2699.2008.02032.x](https://doi.org/10.1111/j.1365-2699.2008.02032.x)
  69. Barraclough TG, Hughes M, Ashford-Hodges N, Fujisawa T (2009) Inferring evolutionarily significant units of bacterial diversity from broad environmental surveys of single-locus data. *Biol. Lett.* 5: 425–428. doi: [10.1098/rsbl.2009.0091](https://doi.org/10.1098/rsbl.2009.0091) PMID: [19369225](https://pubmed.ncbi.nlm.nih.gov/19369225/)
  70. Avise JC (2009) Phylogeography: retrospect and prospect. *J. Biogeogr.* 36: 3–15. doi: [10.1111/j.1365-2699.2008.02032.x](https://doi.org/10.1111/j.1365-2699.2008.02032.x)
  71. Hebert PDN, deWaard JR, Landry JF (2010) DNA barcodes for 1/1000 of the animal kingdom. 6: 359–362. doi: [10.1098/rsbl.2009.0848](https://doi.org/10.1098/rsbl.2009.0848) PMID: [20015856](https://pubmed.ncbi.nlm.nih.gov/20015856/)
  72. Haussmann A, Haszprunar G, Hebert PDN (2011) DNA barcoding the geometrid fauna of Bavaria (Lepidoptera): successes, surprises, and questions. *PLoS ONE* 6: e17134. doi: [10.1371/journal.pone.0017134](https://doi.org/10.1371/journal.pone.0017134) PMID: [21423340](https://pubmed.ncbi.nlm.nih.gov/21423340/)
  73. Butcher BA, Smith MA, Sharkey MJ, Quicke DLJ (2012) A turbo-taxonomic study of Thai *Aleiodes* (*Aleiodes*) and *Aleiodes* (*Arcaleiodes*) (Hymenoptera: Braconidae: Rogadinae) based largely on COI barcoded specimens, with rapid descriptions of 179 new species. *Zootaxa* 3457: 1–232.
  74. Riedel A, Sagata K, Surbakti S, Tänzler R, Balke M (2013a) One hundred and one new species of *Trigonopterus* weevils from New Guinea. *ZooKeys* 280: 1–150. doi: [10.3897/zookeys.280.3906](https://doi.org/10.3897/zookeys.280.3906)
  75. Riedel A, Sagata K, Suhardjono YR, Tänzler R, Blake M (2013b) Integrative taxonomy on the fast track—towards more sustainability in biodiversity research. *Front. Zool.* 10: 15. doi: [10.1186/1742-9994-10-15](https://doi.org/10.1186/1742-9994-10-15) PMID: [23537182](https://pubmed.ncbi.nlm.nih.gov/23537182/)
  76. Pogue M (2002) A world revision of the genus *Spodoptera* Guenée (Lepidoptera: Noctuidae). American Entomological Society. Philadelphia. 202 p.
  77. Lalanne-Cassou B, Silvain JF, Monti L, Malosse C (1999) Mécanismes d'isolement reproducteur chez les espèces du complexe Neotropical *Spodoptera latifascia*—*S. cosmioides*—*S. descoinsi* (Lepidoptera: Noctuidae). *Ann Soc Entomol Fr (NS)* 35: S109–S116.
  78. Groot A, Marr M, Schofl G, Lorenz S, Svatos A, Heckel DG (2008) Host strain specific sex pheromone variation in *Spodoptera frugiperda*. *Front Zool* 5: 20. doi: [10.1186/1742-9994-5-20](https://doi.org/10.1186/1742-9994-5-20) PMID: [19109878](https://pubmed.ncbi.nlm.nih.gov/19109878/)
  79. Schöfl G, Heckel David G., Groot AT (2009) Time-shifted reproductive behaviours among fall armyworm (Noctuidae: *Spodoptera frugiperda*) host strains: evidence for differing modes of inheritance. *J Evol Biol* 22: 1447–1459. doi: [10.1111/j.1420-9101.2009.01759.x](https://doi.org/10.1111/j.1420-9101.2009.01759.x) PMID: [19467132](https://pubmed.ncbi.nlm.nih.gov/19467132/)
  80. Brown ES, Dewhurst CF (1975) The genus *Spodoptera* (Lepidoptera: Noctuidae) in Africa and the Near East. *Bull Entomol Res* 65: 221–262. doi: [10.1017/S0007485300005939](https://doi.org/10.1017/S0007485300005939)
  81. Todd EL, Poole RW (1980) Keys and illustrations for the armyworm moths of the Noctuid genus *Spodoptera* Guenée from the western hemisphere. *Ann Entomol Soc Am* 73: 722–738.



82. Silvain J-F, Lalanne-Cassou B (1997) Distinction entre *Spodoptera latifascia* (Walker) et *Spodoptera cosmioides* (Walker), bona species (Lepidoptera, Noctuidae). *Rev Fr Entomol* 19: 95–97.
83. Martinelli S, Barata RM, Zucchi MI, Silva-Filho MDC, Omoto C (2006) Molecular variability of *Spodoptera frugiperda* (Lepidoptera: Noctuidae) populations associated to maize and cotton crops in Brazil. *J Econ Entomol* 99: 519–526. doi: [10.1603/0022-0493-99.2.519](https://doi.org/10.1603/0022-0493-99.2.519) PMID: [16686155](https://pubmed.ncbi.nlm.nih.gov/16686155/)
84. Salinas-Hernandez H, Saldamando-Benjumea CI (2011) Haplotype identification within *Spodoptera frugiperda* (J.E. Smith) (Lepidoptera: Noctuidae) corn and rice strains from Colombia. *Neotrop Entomol* 40: 421–430. doi: [10.3958/059.037.0213](https://doi.org/10.3958/059.037.0213) PMID: [21952956](https://pubmed.ncbi.nlm.nih.gov/21952956/)
85. Kergoat GJ, Prowell DP, Le Ru BP, Mitchell A, Dumas P, Clamens A-L (2012) Disentangling dispersal, vicariance and adaptive radiation patterns: a case study using armyworms in the pest genus *Spodoptera* (Lepidoptera: Noctuidae). *Mol Phylogenet Evol* 65: 855–870. doi: [10.1016/j.ympev.2012.08.006](https://doi.org/10.1016/j.ympev.2012.08.006) PMID: [22939903](https://pubmed.ncbi.nlm.nih.gov/22939903/)
86. Greenberg SM, Sappington TW, Legaspi BC, Liu T-X, Sétamou M (2001) Feeding and life history of *Spodoptera exigua* (Lepidoptera: Noctuidae) on different host plants. *Ann Entomol Soc Am* 94: 566–575.
87. Barros EM, Torres JB, Ruberson JR, Oliveira MD (2010) Development of *Spodoptera frugiperda* on different hosts and damage to reproductive structures in cotton. *Entomol Exp Appl* 137: 237–245. doi: [10.1111/j.1570-7458.2010.01058.x](https://doi.org/10.1111/j.1570-7458.2010.01058.x)
88. Drès M, Mallet J (2002) Host races in plant-feeding insects and their importance in sympatric speciation. *Philos Trans R Soc Lond B Biol Sci* 357: 471–492. doi: [10.1098/rstb.2002.1059](https://doi.org/10.1098/rstb.2002.1059) PMID: [12028786](https://pubmed.ncbi.nlm.nih.gov/12028786/)
89. Prowell DP, McMichael M, Silvain J-F (2004) Multilocus genetic analysis of host use, introgression, and speciation in host strains of fall armyworm (Lepidoptera: Noctuidae). *Ann Entomol Soc Am* 97: 1034–1044.
90. Bolnick DI, Fitzpatrick BM (2007) Sympatric speciation: models and empirical evidence. *Annu Rev Ecol Syst* 38: 459–487. doi: [10.1146/annurev.ecolsys.38.091206.095804](https://doi.org/10.1146/annurev.ecolsys.38.091206.095804)
91. Juárez ML, Schöfl G, Vera MT, Vilardi JC, Murúa MG, Willink E, et al. (2014) Population structure of *Spodoptera frugiperda* maize and rice host forms in South America: are they host strains? *Entomol Exp Appl*. doi: [10.1111/eea.12215](https://doi.org/10.1111/eea.12215)
92. Pashley DP (1986) Host-associated genetic differentiation in fall armyworm (Lepidoptera: Noctuidae): a sibling species complex? *Entomol Soc Am* 79: 989–904.
93. Prowell DP, McMichael M, Silvain J-F (2004) Multilocus genetic analysis of host use, introgression, and speciation in host strains of fall armyworm (Lepidoptera: Noctuidae). *Ann Entomol Soc Am* 97: 1034–1044.
94. Meagher R, Nagoshi R, Stuhl C (2011) Oviposition choice of two fall armyworm (Lepidoptera: Noctuidae) host strains. *J Insect Behav* 24: 337–347. doi: [10.1007/s10905-011-9259-7](https://doi.org/10.1007/s10905-011-9259-7)
95. Lu Y, Adang MJ (1996) Distinguishing fall armyworm (Lepidoptera: Noctuidae) strains using a diagnostic mitochondrial DNA marker. *Fla Entomol* 79: 48–55. doi: [10.2307/3495753](https://doi.org/10.2307/3495753)
96. McMichael M, Prowell DP (1999) Differences in amplified fragment-length polymorphisms in fall armyworm (Lepidoptera: Noctuidae) host strains. *Ann Entomol Soc Am* 92: 175–181.
97. Levy HC, Garcia-Maruniak A, Maruniak JE (2002) Strain identification of *Spodoptera frugiperda* (Lepidoptera: Noctuidae) insects and cell line: pcr-RFLP of cytochrome oxidase C subunit I gene. *Fla Entomol* 85: 186–190.
98. Meagher RL, Gallo-Meagher M (2003) Identifying host strains of fall armyworm (Lepidoptera: Noctuidae) in Florida using mitochondrial markers. *Fla Entomol* 86: 450–455.
99. Nagoshi RN, Armstrong JS, Silvie P, Meagher RL (2008) Structure and distribution of a strain-biased tandem repeat element in fall armyworm (Lepidoptera: Noctuidae) populations in Florida, Texas, and Brazil. *Ann Entomol Soc Am* 101: 1112–1120. doi: [10.1603/0013-8746-101.6.1112](https://doi.org/10.1603/0013-8746-101.6.1112)
100. Pair SD, Raulston JR, Sparks AN, Westbrook JK, Douce GK (1986) Fall armyworm distribution and population dynamics in the Southeastern states. *Fla Entomol* 69: 468–487. doi: [10.2307/3495380](https://doi.org/10.2307/3495380)
101. Machado V, Wunder M, Baldissera VD, Oliveira JV, Fiúza LM, Nagoshi RN (2008) Molecular characterization of host strains of *Spodoptera frugiperda* (Lepidoptera: Noctuidae) in Southern Brazil. *Ann Entomol Soc Am* 101: 619–626.
102. Fontaneto D, Herniou EA, Boschetti C, Caprioli M, Melone G, Ricci C, et al. (2007) Independently evolving species in asexual bdelloid rotifers. *PLoS Biol* 5: e87. doi: [10.1371/journal.pbio.0050087](https://doi.org/10.1371/journal.pbio.0050087) PMID: [17373857](https://pubmed.ncbi.nlm.nih.gov/17373857/)
103. Astrin JJ, Stüben PE, Misof B, Wägele JW, Gimnich F, Raupach MJ, et al. (2012) Exploring diversity in cryptorhynchine weevils (Coleoptera) using distance-, character- and tree-based species delineation. *Mol Phylogenet Evol* 63: 1–14. doi: [10.1016/j.ympev.2011.11.018](https://doi.org/10.1016/j.ympev.2011.11.018) PMID: [22155423](https://pubmed.ncbi.nlm.nih.gov/22155423/)

104. Bergsten J, Bilton DT, Fujisawa T, Elliott M, Monaghan MT, Balke M, et al. (2012) The effect of geographical scale of sampling on DNA barcoding. *Syst Biol.* 61: 851–869. doi: [10.1093/sysbio/sys037](https://doi.org/10.1093/sysbio/sys037) PMID: [22398121](https://pubmed.ncbi.nlm.nih.gov/22398121/)
105. Esselstyn JA, Evans BJ, Sedlock JL, Anwarali Khan FA, Heaney LR (2012) Single-locus species delimitation: a test of the mixed Yule-coalescent model, with an empirical application to Philippine round-leaf bats. *Proc R Soc Lond B Biol Sci.* 279: 3678–3686. doi: [10.1098/rspb.2012.0705](https://doi.org/10.1098/rspb.2012.0705)
106. Papadopoulou A, Monaghan MT, Barraclough TG, Vogler AP (2009) Sampling error does not invalidate the Yule-coalescent model for species delimitation. A response to Lohse (2009). *Syst Biol.* 58: 442–444. doi: [10.1093/sysbio/syp038](https://doi.org/10.1093/sysbio/syp038)
107. Reid N, Carstens B (2012) Phylogenetic estimation error can decrease the accuracy of species delimitation: a bayesian implementation of the general mixed Yule-coalescent model. *BMC Evol Biol* 12: 196. doi: [10.1186/1471-2148-12-196](https://doi.org/10.1186/1471-2148-12-196) PMID: [23031350](https://pubmed.ncbi.nlm.nih.gov/23031350/)
108. Fujisawa T, Barraclough TG (2013) Delimiting species using single-locus data and the generalized mixed Yule coalescent (GMYC) approach: a revised method and evaluation on simulated datasets. *Syst Biol.* 62: 707–724. doi: [10.1093/sysbio/syt033](https://doi.org/10.1093/sysbio/syt033) PMID: [23681854](https://pubmed.ncbi.nlm.nih.gov/23681854/)
109. Talavera G, Dinca V, Vila R (2013). Factors affecting species delimitations with the GMYC model: insights from a butterfly survey. *Methods Ecol Evol* 4: 1101–1110. doi: [10.1111/2041-210X.12107](https://doi.org/10.1111/2041-210X.12107)
110. Tang CQ, Humphreys AM, Fontaneto D, Barraclough TG (2014) Effects of phylogenetic reconstruction method on the robustness of species delimitation using single-locus data. *Methods Ecol Evol* 5: 1086–1094. doi: [10.1111/2041-210X.12246](https://doi.org/10.1111/2041-210X.12246)
111. Mitchell A, Mitter C, Regier JC (2006) Systematics and evolution of the cutworm moths (Lepidoptera: Noctuidae): evidence from two protein-coding nuclear genes. *Syst Entomol* 31: 21–46. doi: [10.1111/j.1365-3113.2005.00306.x](https://doi.org/10.1111/j.1365-3113.2005.00306.x)
112. Katoh K, Standley DM (2013) MAFFT multiple sequence alignment software version 7: improvements in performance and usability. *Mol Biol Evol* 30: 772–780. doi: [10.1093/molbev/mst010](https://doi.org/10.1093/molbev/mst010) PMID: [23329690](https://pubmed.ncbi.nlm.nih.gov/23329690/)
113. Maddison WP (2010) Maddison. DR (2010). Mesquite: a modular system for evolutionary analysis. Version 3.
114. Nylander JAA, Ronquist F, Huelsenbeck JP, Nieves-Aldrey J (2004) Bayesian phylogenetic analysis of combined data. *Syst Biol* 53: 47–67. doi: [10.1080/10635150490264699](https://doi.org/10.1080/10635150490264699) PMID: [14965900](https://pubmed.ncbi.nlm.nih.gov/14965900/)
115. Lanfear R, Calcott B, Ho SYW, Guindon S (2012) PartitionFinder: combined selection of partitioning schemes and substitution models for phylogenetic analyses. *Mol Biol Evol* 29: 1695–1701. doi: [10.1093/molbev/mss020](https://doi.org/10.1093/molbev/mss020) PMID: [22319168](https://pubmed.ncbi.nlm.nih.gov/22319168/)
116. Posada D, Buckley TR (2004) Model selection and model averaging in phylogenetics: advantages of Akaike information criterion and bayesian approaches over likelihood ratio tests. *Syst Biol* 53: 793–808. doi: [10.1080/10635150490522304](https://doi.org/10.1080/10635150490522304) PMID: [15545256](https://pubmed.ncbi.nlm.nih.gov/15545256/)
117. Stamatakis A (2014) RAxML version 8: a tool for phylogenetic analysis and post-analysis of large phylogenies. *Bioinformatics* 30: 1312–1313. doi: [10.1093/bioinformatics/btu033](https://doi.org/10.1093/bioinformatics/btu033) PMID: [24451623](https://pubmed.ncbi.nlm.nih.gov/24451623/)
118. Stamatakis A (2006) RAxML-VI-HPC: maximum likelihood-based phylogenetic analyses with thousands of taxa and mixed models. *Bioinformatics* 22: 2688–2690. doi: [10.1093/bioinformatics/btl446](https://doi.org/10.1093/bioinformatics/btl446) PMID: [16928733](https://pubmed.ncbi.nlm.nih.gov/16928733/)
119. Hillis DM, Bull JJ (1993) An empirical test of bootstrapping as a method for assessing confidence in phylogenetic analysis. *Syst Biol* 42: 182–192. doi: [10.1093/sysbio/42.2.182](https://doi.org/10.1093/sysbio/42.2.182)
120. Ronquist F, Teslenko M, van der Mark P, Ayres DL, Darling A, Höhna S, et al. (2012) MrBayes 3.2: efficient bayesian phylogenetic inference and model choice across a large model space. *Syst Biol* 61: 539–542. doi: [10.1093/sysbio/sys029](https://doi.org/10.1093/sysbio/sys029) PMID: [22357727](https://pubmed.ncbi.nlm.nih.gov/22357727/)
121. Drummond AJ, Suchard MA, Xie D, Rambaut A (2012) Bayesian phylogenetics with BEAUti and the BEAST 1.7. *Mol Biol Evol* 29: 1969–1973. doi: [10.1093/molbev/mss075](https://doi.org/10.1093/molbev/mss075) PMID: [22367748](https://pubmed.ncbi.nlm.nih.gov/22367748/)
122. Huelsenbeck JP, Larget B, Alfaro ME (2004) Bayesian phylogenetic model selection using reversible jump Markov chain monte carlo. *Mol Biol Evol* 21: 1123–1133. doi: [10.1093/molbev/msh123](https://doi.org/10.1093/molbev/msh123) PMID: [15034130](https://pubmed.ncbi.nlm.nih.gov/15034130/)
123. Erixon P, Svennblad B, Britton T, Oxelman B (2003) Reliability of bayesian posterior probabilities and bootstrap frequencies in phylogenetics. *Syst Biol* 52: 665–673. doi: [10.1080/10635150390235485](https://doi.org/10.1080/10635150390235485) PMID: [14530133](https://pubmed.ncbi.nlm.nih.gov/14530133/)
124. Ezard T, Fujisawa T, Barraclough TG (2009) Splits: species' limits by threshold statistics. R Package Version 1.
125. Paradis E, Claude J, Strimmer K (2004) APE: analyses of phylogenetics and evolution in R language. *Bioinformatics* 20: 289–290. doi: [10.1093/bioinformatics/btg412](https://doi.org/10.1093/bioinformatics/btg412) PMID: [14734327](https://pubmed.ncbi.nlm.nih.gov/14734327/)

126. Bortolussi N, Durand E, Blum M, François O (2006) apTreeshape: statistical analysis of phylogenetic tree shape. *Bioinformatics* 22: 363–364. doi: [10.1093/bioinformatics/bti798](https://doi.org/10.1093/bioinformatics/bti798) PMID: [16322049](https://pubmed.ncbi.nlm.nih.gov/16322049/)
127. Nagoshi RN, Meagher RL, Hay-Roe M (2012) Inferring the annual migration patterns of fall armyworm (Lepidoptera: Noctuidae) in the United States from mitochondrial haplotypes. *Ecol Evol* 2: 1458–1467. doi: [10.1002/ece3.268](https://doi.org/10.1002/ece3.268) PMID: [22957154](https://pubmed.ncbi.nlm.nih.gov/22957154/)
128. Williams ST, Knowlton N (2001) Mitochondrial pseudogenes are pervasive and often insidious in the snapping shrimp genus *Alpheus*. *Mol Biol Evol* 18: 1484–1493. PMID: [11470839](https://pubmed.ncbi.nlm.nih.gov/11470839/)
129. Petit RJ, Excoffier L (2009) Gene flow and species delimitation. *Trends Ecol Evol* 24: 386–393. doi: [10.1016/j.tree.2009.02.011](https://doi.org/10.1016/j.tree.2009.02.011) PMID: [19409650](https://pubmed.ncbi.nlm.nih.gov/19409650/)
130. Brown JM, Hedtke SM, Lemmon AR, Lemmon EM (2010) When trees grow too long: investigating the causes of highly inaccurate bayesian branch-length estimates. *Syst Biol* 59: 145–161. doi: [10.1093/sysbio/syp081](https://doi.org/10.1093/sysbio/syp081) PMID: [20525627](https://pubmed.ncbi.nlm.nih.gov/20525627/)
131. Lemmon AR, Moriarty EC (2004) The importance of proper model assumption in bayesian phylogenetics. *Syst Biol* 53: 265–277. doi: [10.1080/10635150490423520](https://doi.org/10.1080/10635150490423520) PMID: [15205052](https://pubmed.ncbi.nlm.nih.gov/15205052/)
132. Phillips MJ (2009) Branch-length estimation bias misleads molecular dating for a vertebrate mitochondrial phylogeny. *Gene* 441: 132–140. doi: [10.1016/j.gene.2008.08.017](https://doi.org/10.1016/j.gene.2008.08.017) PMID: [18809474](https://pubmed.ncbi.nlm.nih.gov/18809474/)
133. Brandley MC, Schmitz A, Reeder TW (2005) Partitioned bayesian analyses, partition choice, and the phylogenetic relationships of scincid lizards. *Syst Biol* 54: 373–390. doi: [10.1080/10635150590946808](https://doi.org/10.1080/10635150590946808) PMID: [16012105](https://pubmed.ncbi.nlm.nih.gov/16012105/)
134. Brown JM, Lemmon AR (2007) The importance of data partitioning and the utility of bayes factors in bayesian phylogenetics. *Syst Biol* 56: 643–655. doi: [10.1080/10635150701546249](https://doi.org/10.1080/10635150701546249) PMID: [17661232](https://pubmed.ncbi.nlm.nih.gov/17661232/)
135. Marshall DC, Simon C, Buckley TR (2006) Accurate branch length estimation in partitioned bayesian analyses requires accommodation of among-partition rate variation and attention to branch length priors. *Syst Biol* 55: 993–1003. doi: [10.1080/10635150601087641](https://doi.org/10.1080/10635150601087641) PMID: [17345679](https://pubmed.ncbi.nlm.nih.gov/17345679/)
136. Ekman S, Blaaid R (2011) The devil in the details: interactions between the branch-length prior and likelihood model affect node support and branch lengths in the phylogeny of the Psoraceae. *Syst Biol* 60: 541–561. doi: [10.1093/sysbio/syr022](https://doi.org/10.1093/sysbio/syr022) PMID: [21436107](https://pubmed.ncbi.nlm.nih.gov/21436107/)
137. Hamilton CA, Hendrixson BE, Brewer MS, Bond JE (2014) An evaluation of sampling effects on multiple DNA barcoding methods leads to an integrative approach for delimiting species: a case study of the North American tarantula genus *Aphonopelma* (Araneae, Mygalomorphae, Theraphosidae). *Mol Phylogenet Evol* 71: 79–93. doi: [10.1016/j.ympev.2013.11.007](https://doi.org/10.1016/j.ympev.2013.11.007) PMID: [24280211](https://pubmed.ncbi.nlm.nih.gov/24280211/)
138. Lima E, McNeil J (2009) Female sex pheromones in the host races and hybrids of the fall armyworm, *Spodoptera frugiperda* (Lepidoptera: Noctuidae). *Chemoecology* 19: 29–36. doi: [10.1007/s00049-009-0005-y](https://doi.org/10.1007/s00049-009-0005-y)
139. Schöfl G, Dill A, Heckel David G, Groot AT (2011) Allochronic separation versus mate choice: nonrandom patterns of mating between fall armyworm host strains. *Am Nat* 177: 470–485. doi: [10.1086/658904](https://doi.org/10.1086/658904) PMID: [21460569](https://pubmed.ncbi.nlm.nih.gov/21460569/)
140. Whitford F, Quisenberry SS, Riley TJ, Lee JW (1988) Oviposition preference, mating compatibility, and development of two fall armyworm strains. *Fla Entomol* 71: 234–243. doi: [10.2307/3495426](https://doi.org/10.2307/3495426)
141. Pashley DP, Martin JA (1987) Reproductive incompatibility between host strains of the fall armyworm (Lepidoptera: Noctuidae). *Ann Entomol Soc Am* 80: 731–733.
142. Dumas P, Legeai F, Lemaitre C, Scaon E, Orsucci M, Labadie K, et al. (2015) *Spodoptera frugiperda* (Lepidoptera: Noctuidae) host plant variants: two strains or two distinct species? *Genetica* in press. doi: [10.1007/s10709-015-9829-2](https://doi.org/10.1007/s10709-015-9829-2)
143. Groot AT, Marr M, Heckel David G, Schofl G (2010) The roles and interactions of reproductive isolation mechanisms in fall armyworm (Lepidoptera: Noctuidae) host strains. *Ecol Entomol* 35: 105–118. doi: [10.1111/j.1365-2311.2009.01138.x](https://doi.org/10.1111/j.1365-2311.2009.01138.x)
144. Quisenberry SS (1991) Fall armyworm (Lepidoptera: Noctuidae) host strain reproductive compatibility. *Fla Entomol* 74: 194–199. doi: [10.2307/3495297](https://doi.org/10.2307/3495297)
145. Nagoshi RN, Fleischer S, Meagher RL (2009) Texas is the overwintering source of fall armyworm in central Pennsylvania: implications for migration into the Northeastern United States. *Environ Entomol* 38: 1546–1554. doi: [10.1603/022.038.0605](https://doi.org/10.1603/022.038.0605) PMID: [20021748](https://pubmed.ncbi.nlm.nih.gov/20021748/)
146. Velásquez-Vélez MI, Saldamando-Benjumea CI, Ríos-Diez JD (2011) Reproductive isolation between two populations of *Spodoptera frugiperda* (Lepidoptera: Noctuidae) collected in corn and rice fields from Central Colombia. *Ann Entomol Soc Am* 104: 826–833. doi: [10.1603/AN10164](https://doi.org/10.1603/AN10164)
147. Nosil P (2012) *Ecological speciation*. Oxford University. Oxford. 304 p.
148. Fletcher DS (1956) *Spodoptera mauritia* (Boisduval) and *S. triturrata* (Walker), two distinct species. *Bull Entomol Res* 47: 215–217. doi: [10.1017/S0007485300046666](https://doi.org/10.1017/S0007485300046666)