



**HAL**  
open science

## The prehistory of the region of Al-Kharj

Rémy Crassard, Yamandú Hilbert

► **To cite this version:**

Rémy Crassard, Yamandú Hilbert. The prehistory of the region of Al-Kharj. J. Schiettecatte; A. Al-Ghazzi. Al-Kharj I - Report on two excavation seasons in the oasis of Al-Kharj, 2011-2012, Saudi Arabia, 40, pp.51-80, 2016, Series of Archaeological Refereed Series, 978-603-8136-34-8. hal-01829339

**HAL Id: hal-01829339**

**<https://hal.science/hal-01829339>**

Submitted on 4 Jul 2018

**HAL** is a multi-disciplinary open access archive for the deposit and dissemination of scientific research documents, whether they are published or not. The documents may come from teaching and research institutions in France or abroad, or from public or private research centers.

L'archive ouverte pluridisciplinaire **HAL**, est destinée au dépôt et à la diffusion de documents scientifiques de niveau recherche, publiés ou non, émanant des établissements d'enseignement et de recherche français ou étrangers, des laboratoires publics ou privés.



برنامج خادم الحرمين الشريفين للعناية بالتراث الحضاري للمملكة



الهيئة العامة للسياحة والتراث الوطني

Saudi Commission for Tourism & National Heritage

scth.gov.sa

# AL-KHARJ I

REPORT ON TWO EXCAVATION SEASONS  
IN THE OASIS OF AL-KHARJ • 2011–2012  
SAUDI ARABIA

Jérémie Schiettecatte

Abdulaziz Alghazzi

Series of Archaeological Refereed studies No.40



Saudi Commission for Tourism and National Heritage, 2016

**King Fahd National Library Cataloging-In-Publication Data**

Schiettecatte, Jeremie

Report on two Excavation Seasons in the Oasis of

Al-Kharj 20112012- Saudi Arabia. / Jeremie

Schiettecatte; Abdulaziz Al-Ghazzi.- Riyadh, 2016

388 p; 29.7x21 cm - (Series of Archaeological Refereed studies No 40)

ISBN: 978 - 603 -8136 - 34 - 8

1- Oasis- Saudi Arabia I- Abdulaziz

Al-Ghazzi (co. author) II- Title

333.73609531 dc 1438 / 221

L.D. no. 1438 / 221

ISBN: 978 - 603 - 8136 - 34 - 8

## TABLE OF CONTENTS

■ INTRODUCTION	23
Two field seasons in the oasis of al-Kharj	23
Funding	23
Archaeology in al-Kharj: past research and present issues	24
Programme of the 2011 and 2012 seasons	26
Recording system	28
The team	29
<b>THE OASIS OF AL-KHARJ</b>	<b>33</b>
■ GEOGRAPHIC AND GEOMORPHOLOGICAL CONTEXTS	35
Geographic situation	35
Geological background	35
Topography	36
Methodology	37
Holocene dynamics	38
Discussion on the links between geomorphological and palaeo-environmental changes and human occupation	40
Conclusion	41
■ THE PREHISTORY OF THE REGION OF AL-KHARJ	51
The significance of al-Kharj region within the Arabian context	51
Methodology	52
Geological analysis of the micro-regions	53
Results	57
AK-22 as a reference site for the Middle Palaeolithic in Central Arabia	63
Conclusion: future work	64
■ PROTOHISTORIC AND HISTORIC SURVEY OF THE REGION OF AL-KHARJ	81
Bronze Age and Iron Age necropolises	83
Late Pre-Islamic and Islamic sites	86
■ NOUVEAUX JALONS POUR UNE GÉOGRAPHIE HISTORIQUE DE LA YAMĀMA : LES TOPONYMES MENTIONNÉS DANS LES INSCRIPTIONS SUDARABIQUES	109
Les toponymes	109
Les textes	120

<b>THE SITE OF AL-YAMĀMA</b>	<b>129</b>
■ <b>AL-YAMĀMA: THE MAP OF THE SITE</b>	<b>131</b>
The topographic frame	131
Setting up a grid	131
Characterizing the relief of the site	131
Mapping the structures on the ground ( <b>fig. 85</b> )	132
Setting up the limits of the excavated areas	133
Mapping the excavated structures	134
■ <b>AL-YAMĀMA: GEOMAGNETIC MAPPING</b>	<b>141</b>
Introduction	141
Method	142
Results	143
Conclusion	144
■ <b>AL-YAMĀMA (AREA N6): SOUNDING 1</b>	<b>153</b>
Location	153
Occupation sequence	154
Conclusion	159
■ <b>AL-YAMĀMA (AREA N6): BUILDING 1 – THE GREAT MOSQUE</b>	<b>175</b>
Description of the architecture	175
Six stages of occupation in the mosque	178
Comparisons and discussion	181
Conclusion	183
■ <b>AL-YAMĀMA (AREA N6): THE POTTERY ASSEMBLAGE</b>	<b>201</b>
Phase 1	204
Phase 2	206
Phase 3	208
Phase 4	210
Surface sampling and provisional reconstruction of the urban layout	211
Concluding remarks	214
■ <b>AL-YAMĀMA (AREA O7): BUILDING 2/SOUNDING 2 – A DWELLING</b>	<b>249</b>
Location	249
Architectural description	249
Stratigraphy	250
Artefacts	251
Discussion	252

■ THE FAUNAL REMAINS OF AL-YAMĀMA: FROM CAMELS TO SPINY-TAILED LIZARDS	259
Bone location	259
Methodology	261
Results: species present	263
Discussion	281
<b>APPENDICES</b>	<b>295</b>
1. Database of archaeological sites of al-Kharj area	297
2. Database of photographs taken during survey and excavation	298
3. Database of stratigraphic units	299
4. Database of archaeological structures	300
5. Database of archaeological artefacts	301
6. Database of pottery	302
7. Database of samples	303
8. Table of the stratigraphic units	304
9. Table of the structures	318
10. Table of the artefacts	340
11. Team members	349
<b>LIST OF BIBLIOGRAPHICAL REFERENCES</b>	<b>353</b>

## CHAPTER 2

### THE PREHISTORY OF THE REGION OF AL-KHARJ

Rémy CRASSARD – *Researcher at the CNRS, UMR 5133 “Archéorient”, Lyon, France*

Yamandú Hieronymus HILBERT – *Post-doctoral fellow, Fyssen Foundation – CNRS, UMR 5133 “Archéorient”, Lyon, France*

#### The significance of al-Kharj region within the Arabian context

Al-Kharj is located in the central part of the Arabian Peninsula thus providing a new point of reference for regional and intraregional comparisons with other sites known in the Kingdom of Saudi Arabia, Yemen, Oman and the United Arab Emirates. Given the dearth of Palaeolithic sites in the area surrounding the city of al-Kharj, the results presented here greatly expand our knowledge concerning prehistoric occupations and population dispersal across the central portion of Saudi Arabia.

Comprehensive studies on the Arabian Palaeolithic are a relatively recent phenomenon, compared to the long-standing traditions of research in Europe, Africa or the Levant. In recent years, the myriad excavations and survey activities in Yemen and Oman (AMIRKHANOV 2006; ROSE 2006; CRASSARD 2009a; DELAGNES *et al.* 2012, 2013; ROSE *et al.* 2011; HILBERT 2012, 2013; HILBERT *et al.* 2012; USIK *et al.* 2013) have provided considerable amounts of data fuelling many discussions and reflections on the role that this region has played across prehistory (AMIRKHANOV 2008; CRASSARD 2008a, 2008b, 2009a, 2009b; MARKS 2008; ROSE & BAILEY 2008; PETRAGLIA & ROSE 2009; PETRAGLIA *et al.* 2011, 2012; CRASSARD *et al.* 2013a).

Equally poorly understood, the Arabian Neolithic is represented by only a few lithic assemblages retrieved from datable context. Thus, the source of the Arabian Neolithic is highly debated: are we dealing with external influence (Levantine), local developments from autochthonous populations (ZARINS 2001, 2013; UERPMANN *et al.* 2009, 2013; CHARPENTIER & CRASSARD 2013; CRASSARD & DRECHSLER 2013; MCCORRISTON 2013; HILBERT 2013), or an amalgamation of both these scenarios? If the Arabian Neolithic is derived from Levantine sources, overlapping technological affinities between both regions should be detectable. Palaeo-environmental and palaeo-climatic studies, on the other hand, indicate that, at least in South-Western Arabia, the prevailing climatic conditions during the early to middle Holocene were conducive to the autochthonous development of a producing subsistence economy (e.g. MCCORRISTON *et al.* 2002; MARTIN *et al.* 2009; LÉZINE *et al.* 2010; PRESTON & PARKER 2013). These studies, combined with extensive lithic analyses are needed to define this period properly and better understand the Neolithic of Arabia.

Based on the aforementioned questions, the 2011 field season of the Saudi-French team was dedicated to the following research agenda:

- Exploring a region where very little work has been done before;
- Exploring a key area for understanding the spread of the first Anatomically Modern Humans (AMH) (Palaeolithic);
- Exploring an area unknown for Early-Mid Holocene occupations (Neolithic).

## Methodology

### SURVEY METHODOLOGY (OCTOBER 2011)

---

The survey activities centred on two primary objectives: 1) exploration of the whole periphery around al-Kharj (survey of northern, eastern, southern and western parts around the modern city of al-Kharj); 2) exploration of raw material outcrops, sources of knapping stones for Pleistocene and Early/Mid-Holocene populations. These survey activities were primarily based on the examination of the regional geomorphology and the study of geological maps.

Use of open access satellite imagery (Google Earth) and GPS tracking allowed the survey team to navigate across the studied area without great difficulties. Transects of varying distances (4 to 5 km) across different areas of al-Kharj region were surveyed, mostly on foot. Upon encountering surface lithic scatters, selective collecting of pre-determined diagnostic pieces was carried out. No systematic collecting was undertaken, as only few seemingly pristine surface sites were identified. Given the post-depositional and erosive phenomena that have afflicted the surface scatters encountered, such spatially constrained collection strategies do not reveal the techno-typological characteristics of the representative prehistoric phases. Test trenches were excavated on selected occasions in order to assess the potential for yielding buried archaeological remains at some of the sites (e.g. AK-22).

Twenty-nine sites were discovered during the three weeks of survey (**figs. 17–18**). These were labelled respectively AK-01 to AK-29 (AK standing for al-Kharj). Each site was located spatially using a Global Positioning System device (hand-held GPS); the localities were described with systematic criteria, such as:

- Date of survey;
- Name of the site;
- Name of the closest topographic feature (e.g. wādī, Jabal, ...);
- Localization (latitude and longitude, altitude, type of topography, anthropic structure in the vicinity, general aspect of the locality);
- Site description (state of preservation of the site, position of artefacts, density and quantity by m<sup>2</sup>, estimated surface area of the site and estimated explored area, potential of the site, preliminary dating);
- Raw material (state and type of raw material);
- Techno-typology (general dimension of pieces, types of artefacts, preliminary observations on the material, functional interpretation);
- Final notice (general potential of the site).

### METHODOLOGY OF LITHIC ANALYSIS

---

Description of the technical process is an important criterion for defining and comparing material cultures and subsequently allows researchers to draw parallels between assemblages (e.g. BAR-YOSEF & VAN PEER 2009; TOSTEVIN 2011). Once these criteria are set, archaeologists condense the information in order to establish local technological industries (*sensu* KLEINDIENST 2006). Understanding prehistoric lithic production techniques is therefore a critical component of Palaeolithic and Neolithic studies, as the lithic industries (stone tools and flaked stones in general) are often the only remnants of human activities found in arid environments due to their resilience against destruction. The sites discovered in the region of al-Kharj in 2011 are surface sites and will not provide any absolute dates. The only way to



place these industries into a comprehensive time-frame is by comparing the techniques used with other dated sites from the Arabian Peninsula and from neighbouring areas. The sites found during the 2011 season have been attributed to the Middle Palaeolithic, which dates roughly to between 150,000 and 50,000 years before present (BP).

Previous research has revealed an abundance of sites attributed to the Middle Palaeolithic period in Arabia (ZARINS *et al.* 1979; WHALEN & SCHATTEN 1997; PETRAGLIA & ALSHAREKH 2003; PETRAGLIA 2005; ROSE 2006). These vestiges are mainly characterized by the use of the Levallois reduction method (see next paragraph for a detailed description). As previously noted, find spots have been primarily associated with surface sites. The high degree of patina observed on the artefacts coupled with the technological observations strongly indicates a Pleistocene age for the majority of these finds. Although the use of patination as an indicator of antiquity should be done with caution (e.g. HURST & KELLY 1961; RÖTTLÄNDER 1975, 1978), its use across comparable environments and similar raw materials offers some degree of reference when placing surface scatters into a chronological frame. The problem remains the absolute dating of surface material and the capability to linking Levallois production with human and faunal remains. Given the lack of contextualized site, it is imperative to provide a comprehensive record of the myriad surface assemblages in order to provide a source for regional comparison between these Levallois-dominated assemblages.

The Levallois concept is characterized by the production of flakes, blades or points in a predetermined manner through the implementation of different methods of flaking (*débitage*) (BOËDA 1994). This concept of *débitage* was used for nearly 500,000 years, from the African Early Stone Age until the Late Stone Age (MARKS & CONARD 2008; BARHAM & MITCHELL 2008). More generally, however, Levallois flake production is associated with the Middle Palaeolithic (DELAGNES *et al.* 2007). The Levallois concept was widely described and illustrated through the study of various assemblages (e.g. BORDES 1961; BOËDA 1991, 1994; DELAGNES 1992; VAN PEER 1992; VAN PEER *et al.* 2010). The Levallois production scheme is recognized across different continents: Europe, Middle East and North-East Africa (e.g. CREW 1975; MEIGNEN & BAR-YOSEF 1988, 1991, 2004; BAR-YOSEF & MEIGNEN 1992; VAN PEER 1992; DIBBLE & BAR-YOSEF 1995; MEIGNEN 1995; DELAGNES & MEIGNEN 2006; DELAGNES *et al.* 2007).

In the Arabian Peninsula, Levallois *débitage* has been identified in Yemen, first by CATON-THOMPSON (1938, 1953) and then by Van Beek (VAN BEEK *et al.* 1963), Inizan (INIZAN & ORTLIEB 1987) and AMIRKHAPOV (1991, 1994). Archaeological investigations of surface sites mention the presence of Levallois *débitage* in Saudi Arabia in the Jubba basin (PETRAGLIA *et al.* 2011), in the United Arab Emirates at Jebel Faya' NE-1 [Jabal al-Fāya] (ARMITAGE *et al.* 2011) and in the region of Filī close to Sharjah (SCOTT-JACKSON *et al.* 2008; WAHIDA *et al.* 2008), in Dhofar (ROSE *et al.* 2011) and in Yemen across the Wādī Wa'sha, the Wādī Ṣanā and the general Ḥaḍramawt region (Eastern Yemen: CRASSARD 2008a, 2009a; CRASSARD & THIÉBAUT 2011), as well as in the Western Highlands at the interface of the Tihāma coastal plain at the Wādī Surdud sites (DELAGNES *et al.* 2012, 2013; SITZIA *et al.* 2012). Thanks to these discoveries across the Arabian Peninsula, the dating of four sites by the Optically Stimulated Luminescence (OSL) method provided dates for the Levallois presence in the Peninsula between, at least, 110,000 to 42,000 BP.

## Geological analysis of the micro-regions

### GEOMORPHOLOGY OBSERVATION AND NOTES ON AL-KHARJ AREA

The area of al-Kharj is characterized by a variety of geological features that have attracted human populations since prehistoric times, such as the presence of suitable lithic raw material, the varying topographic landscape and the presence of subsurface (and at times

perennial surface) waters (see Chapter 1). A short description of al-Kharj quadrangle will be given here; it is based on the geological maps of the Riyadh quadrangle Sheet 241 and the accompanying explanatory notes published by the Saudi Ministry of Petroleum and Mineral Resources (VASLET *et al.* 1991). Additional field observations made by the authors are also taken into consideration.

A succession of north-west trending *cuestas* composed of Late Jurassic to Cretaceous formations with south-west facing scarps characterize the northern part of the Riyadh area. Further south the scarps are oriented towards the south-west. This change of orientation and the dip of the *cuestas* are caused by the Central Arabian Arch (POWERS *et al.* 1966). At al-Kharj the north to south running scarps are cut by the convergence of the Central Arabian Graben system composed of the Nisāḥ, Awsaṭ, Bu'ayjā' and 'Ujmān, Rufā' and the Mughara grabens (figs. 1, 17).

The west-east axis of the dip from the Red Sea Hills to the Central Arabian Shield caused the emergence of subsurface waters in the form of springs and marshes in the Riyadh area during the Quaternary and beyond. The presence of sub-surface waters is caused by the local tectonics; the rupture of the Arabian Shield by the tectonics that created the Central Arabian Graben systems would have activated natural artesian springs in the area. Given that the evolution of the graben systems underwent several phases, activation of such artesian springs would have been recurrent. The most recent tectonic event affected the Rufā' Graben, offsetting the locally outcropping Rufā' formation by 16 m. Given the lack of agreement concerning the age of the Rufā' Formation, possibly Mid- to Late Quaternary, this tectonic event may have occurred in relatively recent times (Quaternary). Examples of aquifer structures may be seen in the south of the quadrant (VASLET *et al.* 1991).

Of additional interest are the karst sinkholes south of al-Kharj; these features are up to 80 m deep and would have provided important perennial water sources for prehistoric population inhabiting the Central Province.

The paleo-wādīs in the area are marked by the homocline of the Arabian Shelf and the Central Arabian Graben System. Main fluvial structures in the region run from the Ṭuwayq Escarpment across the Ṭuwayq Plateau (fig. 19) in a general west-east course. Towards the centre of al-Kharj area, the wādī courses follow the above-mentioned graben structures such as the Wādī Nisāḥ (fig. 20) and the Wādī al-Sahbā'. South-east of Riyadh, a series of wādīs drain southward into the Wādī al-Sahbā' and have brought considerable amounts of fluvial deposits into al-Kharj cluse. Furthermore, small southward running wādīs dissect the low al-'Uruma escarpment to the east of al-Kharj (VASLET *et al.* 1991).

Lacustrine deposits formed during the early Holocene in al-Kharj cluse; radiocarbon dates of 9,000-7,000 BP (VASLET *et al.* 1991: 33) are consistent with other radiometric readings across Central and Southern Arabia (McCLURE 1976, 1978; PARKER *et al.* 2006a; PREUSSER 2009, CRASSARD *et al.* 2013b). These deposits are characterized by thin lacustrine and palustrine (wetland) sediments.

#### AREAS SURVEYED DURING THE 2011 SEASON

Given the limitations encountered during the 2011 al-Kharj prehistoric survey, namely the intense urbanization and agricultural usage of the area and the short duration of the field season, this study was restricted to the following areas: The Nisāḥ Graben, the southern area of the Rufā' Graben and the northern part of the Dilam depression. Sporadic visits were also undertaken to assess the potential of the following areas in and around al-Kharj: the eastern part of the Ṭuwayq Plateau, the Mughara graben and the area south-east of al-Kharj (fig. 21).

■ *The Nisāḥ Graben (sites AK-1 to AK-11) (fig. 21a)*

Extending over 75 km and averaging 2.5 km in width between its northern and southern faces, the Nisāḥ Graben is the most prominent of these formations in the area. Starting in the Ṭuwayq Jurassic limestone mountain chain, the Nisāḥ Graben extends eastwards into the suburbs of al-Kharj. This formation is divided into four segments: the Kuḥayl, the Kuḥla, the Sadḥān and the Hayāthim segment respectively from west to east. The Hayāthim segment, is the longest, spanning approximately 40 km, and is marked by diverse geological formations of the Thamām Group. These early Cretaceous formations are characterized by interchanging limestone beds in its lower portion while its upper portions are formed by calcret sandstone members. Undifferentiated Quaternary deposits of both aeolian and fluvial character cover the area within the graben and around its northern and southern edges. The Nisāḥ Graben was not filed by any lacustrine events in the course of the Quaternary or beyond.

While the geology of the eastern portion of the Nisāḥ Graben is well exposed, an extensive aeolian blanket covers its western portion making survey problematic (fig. 22). The eleven sites recorded along the northern and southern face of the Hayāthim segment were associated with raw material outcrops (fig. 18). Primarily beige to brown, black weathered, fine-grained ferruginous sandstone, locally silicate-cemented (quartzite) raw material was used. This resource is found outcropping from the Dughum member (Biyād sandstone). To a lesser extent (in the case of site AK-07) beige cherty limestone outcropping from the Yamāma member (lower early Cretaceous formation) was used. No fine-grained chert outcropping from primary deposits has been observed in this sector.

■ *The Dilam depression (sites AK-12 to 17) (fig. 21c)*

South of the Nisāḥ Graben a low depression dotted with low inselbergs, remnants of Jurassic and Cretaceous limestone, stretches across ca. 20 km (fig. 23). Inactive and partially active gravel sheets, Holocene lacustrine deposits and dune systems mask the geology of the Dilam depression. Extensive farms situated in this area cover these sediments which are extremely conducive to agriculture. To the west, a series of eastwards draining, seasonally active wādīs and gravel sheets may be described. Here the geology of the Dilam depression is most visible; mainly beige to creamy laminated limestone, dolomitic limestone and evaporite solution of the Sulayy formation (Upper Breccia Complex and the Arab C-member of late Jurassic age) are seen.

The sites found in the Dilam depression were either at the foot of low inselbergs, mostly remnants of the Yamāma formation, and across the gravel plain itself. Throughout the low and dissected landscape, disaggregated fluvial deposits of undetermined age were mapped (VASLET *et al.* 1991: 28). These fluvial deposits, possibly related to the Late Tertiary to Early Quaternary uplift of the Red Sea Hills, are to a larger extent (90%) composed of rounded quartz cobbles, and composed for 10% of other well-rounded shield and cover rocks (granite, diorite and rhyolite).

Three sites have been found associated with these unnamed fluvial deposits (AK-14, AK-15 and AK-17). These show a great variety in raw materials used and possibly a chronologically broad attribution.

■ *The Rufā' Graben (sites AK-18 to 26) (fig. 21b)*

Approximately 30 km long and between 0.8 and 1.5 km wide, in its north-south axis, the Rufā' Graben is composed of three segments, respectively from west to east: the 'Ammāj segment, the Sha'al segment and the Ashqar Marāgha segment. The northern face of the graben is marked by Jabal Umm ash-Sha'al with its rough cliff rising 80-100 m above the bottom of the graben. Beyond the cliff, this feature extends towards the north-east as a flat,

undulating plateau composed of beige bioclastic, bioturbated limestone and clayey limestone (Sulayy formation). The graben's southern face is for the greater part masked by superficial deposits except for its eastern crest, which is also composed of Sulayy formation limestone. The eastern portion of the Rufā' Graben is marked by a variety of lacustrine, wetland and *khabra* deposits, attesting the presence of lakes in the area during the Quaternary (fig. 16).

Survey activities were undertaken close to the contact zone between the Sulayy limestone and the Cretaceous sandstone formations in the eastern portion of the Ashqar Marāgha segment. Here, high quality, fine-grained quartzite and siltstones presenting dark weathered cortex were observed. Surface sites have been found associated with these raw material sources.

■ *Additional localities visited (AK-NULL-01 to 06)*

As mentioned above sporadic visits to areas adjacent to al-Kharj quadrangle were made during the 2011 survey campaign. These produced few results compared to the Nisāḥ, the Rufā' Graben and the Dilam depression. Either isolated artefact occurrences or the complete absence of Palaeolithic vestiges were noted. Areas surveyed and found devoid of archaeological sites have been labelled NULL sites and numbered in consecutive order.

AK Null 01 and 02 (fig. 21f) were on the Ṭuwayq plateau. This low limestone plateau is dissected by deeply incised wādī systems running from east to west. The currently dry wādī beds are filled with fluvial detritus composed of poorly sorted limestone gravels and cobbles of varying sizes. A braided pattern characterizes the sediments within the wādī beds and reflects the last event before the wādī dried out. Approximately 50 to 70 m above the wādī bed the extensive undulating limestone plateau stretches, with a gentle west-east dip, for over 30 km towards the east. No raw material sources, either in primary or secondary context could be identified. The high energy sedimentary environment inside the wādī systems were considered to be possible reasons for the absence of Palaeolithic sites in this area.

AK Null 03 was mapped on the Jabal Umm ash-Sha'āl plateau north of the Rufā' Graben; similar to the Ṭuwayq plateau this area is marked by wādī systems running from west to east. These wādī systems were less incised than the Ṭuwayq Plateau. Again the absence of suitable raw material was regarded as cause for the lack of Palaeolithic sites. Also, the intense agricultural use of this area imposed severe constraints to survey activities.

The Mughara Graben has yielded both NULL sites and a few isolated occurrences; north of al-Tawḍiḥiyya, isolated occurrences AK-28 and 29 and a NULL site (AK Null 04) were mapped (fig. 21e). The area was marked by a low, inactive gravel plain, dissected by small seasonally active run offs; outcrops of unnamed fluvial deposits (discussed in the Dilam depression section) were identified here. A few isolated undiagnostic stone tools were found associated with these outcrops. To the north, a gently rising scarp (Yamāma formation) may be seen. Here, a few raw material outcrops were identified. As in similar outcrops around al-Kharj area, the Yamāma formation contained up to one-metre-thick silicified and ferruginized hard ground horizons. These have been used as raw material sources at other Paleolithic sites in the Nisāḥ Graben. Here, these sediments appeared to display a higher iron oxide content, reducing knapping capabilities. Again, the absence of Palaeolithic sites may relate to the lack of suitable raw material.

## Results

During the 2011 prehistoric survey, Middle Palaeolithic sites of varying size have been identified. Unfortunately, little evidence hinting at this area's Early/Mid-Holocene occupation was found. Only a few isolated artefacts were discovered and tentatively attributed to a post-Palaeolithic period based on fresher state of weathering, as well as different techniques used by the flint-knappers. This absence does not mean a total absence of Neolithic presence in the region of al-Kharj. The general topography of this flat region could also explain this absence (see Chapter 1), as the alluvial plain surrounding the oasis area has experienced considerable sediment build-up over the course of the Holocene. This sediment accumulation probably caused the re-deposition, dismantling and burial of Early Holocene sites and former surface scatters. Survey of the first terraces and higher mounds equally failed to produce evidence of Early/Mid Holocene human occupation. These higher elevations, however, have produced a considerable quantity of Middle Palaeolithic artefacts, raising the question of whether the absence of younger material is a function of the mode of subsistence and land use of Holocene human groups in the area.

The predominance of Middle Palaeolithic sites could be explained by geomorphology, geology and the analysis of the landscapes in conjunction with the palaeo-environmental data. The various wetter phases that occurred during the Pleistocene would have transformed the hostile environments of Central Arabia into a semi-arid savannah, capable of sustaining a much larger biomass than under present conditions; human populations would be attracted to such environments (PARKER & ROSE 2008; ROSE & PETRAGLIA 2009; FLEITMANN & MATTER 2009). The Middle Palaeolithic period represents a long timeline across which numerous waves of human expansion could have occurred. The various Middle Palaeolithic industries found across al-Kharj area could therefore represent multiple diachronic dispersals of human groups across Central Arabia. Thus, it is possible to argue that the sites discovered around al-Kharj are the product of various stages of peopling across considerable chronological depth. The variability seen across these lithic industries, however, gives considerable information about the cultural and cognitive development of the Hominids who manufactured them. The technological variability of the Levallois *débitage* found within the collected assemblages, coupled with previously known and studied artefacts from the Northern and Southern Arabian Peninsula, indicate some degree of movement across Arabia without erasing the possibility of identifying local variability.

### LIST OF SITES DISCOVERED

---

All 29 sites discovered during the 2011 survey are surface sites characterized by the production of stone tools. The archaeological material found consists of lithics. They are mostly ferruginous quartzite and various other types of coarse-grained raw materials; a small number of artefacts were made on chert. Most of the lithics found have been attributed to the Palaeolithic, most probably the Middle Palaeolithic. **Table 3** lists the localities, the date of discovery, the name of the site, latitude, longitude and approximate altitude (in metres above sea level).

### DESCRIPTION OF SITES AND ASSOCIATED LITHIC INDUSTRIES

---

#### ■ AK-01

Little sign of disturbance by older and younger archaeological occurrences were observed. The presence of possible Bronze Age cairn/tower tombs at the base of the jabal was noted.

Presence of Levallois *débitage* and cores, typical of the Middle Palaeolithic of Arabia (fig. 25). Potential for comparisons with Northern and Southern Arabian Levallois assemblages.

SITE	LATITUDE (DECIMAL DEGREE N)	LONGITUDE (DECIMAL DEGREE E)	ALTITUDE (METRES ABOVE SEA LEVEL)	DATE
AK-01	24.212180	47.904730	461	02/10/2011
AK-02	24.215930	47.172590	494	02/10/2011
AK-03	24.217580	47.173770	471	03/10/2011
AK-04	24.219881	47.167978	467	03/10/2011
AK-05	24.218980	47.162014	471	03/10/2011
AK-06	24.220591	47.159326	471	03/10/2011
AK-07	24.221595	47.159159	472	03/10/2011
AK-08	24.210669	47.117059	473	04/10/2011
AK-09	24.217671	47.120739	472	04/10/2011
AK-10	24.220538	47.096546	504	04/10/2011
AK-11	24.222623	47.050613	508	04/10/2011
AK-12	24.154530	47.023319	483	05/10/2011
AK-13	24.155370	47.024801	493	05/10/2011
AK-14	24.150531	47.031849	478	05/10/2011
AK-15	24.150337	47.032837	479	05/10/2011
AK-16	24.126590	47.010537	482	05/10/2011
AK-17	24.121931	47.013013	476	05/10/2011
AK-18	24.333689	47.159155	473	08/10/2011
AK-19	24.333340	47.150241	472	09/10/2011
AK-20	24.335700	47.150731	474	09/10/2011
AK-21	24.336320	47.149659	481	09/10/2011
AK-22	24.333481	47.153702	474	09/10/2011
AK-23	24.333720	47.154454	474	09/10/2011
AK-24	24.334178	47.156502	477	10/10/2011
AK-25	24.334149	47.162540	475	10/10/2011
AK-26	24.333563	47.164320	474	10/10/2011
AK-27	24.097690	47.402649	439	12/10/2011
AK-28	24.214588	48.070783	369	13/10/2011
AK-29	24.219290	48.065610	384	13/10/2011

Table 3 | List of prehistoric sites discovered during al-Kharj survey 2011

■ AK-02

Surface site on the second terrace of a flat inselberg chain (**fig. 26**). Raw material is present and characterized by slabs of pale quartzite (beige with darker striation). Artefacts present a light patination. The artefacts are undiagnostic, mostly large flakes and single platform, unidirectional cores. No Levallois technology was observed. Cairn tombs, 3 m in diameter, were noted in the general area of the lithic scatter. A connection between the structures and the surface scatter is unlikely.

■ AK-03

Surface site close to the asphalt road along the northern edge of a small mountain chain north of Wadi Nisāḥ. The surface scatter covers an 80 × 40 m area at the foot of the jabal (**fig. 27**). Artefacts were found on a relatively flat surface with a slight dip to the N/NW towards the gravel plain. The site is cut by two erosion gullies filled with aeolian sediments. Middle Palaeolithic Levallois (centripetal recurrent) cores and *débitage* and one biface preform were collected (**fig. 28**). The artefacts are generally intermediate to large in size. Their patination and weathering varies, suggesting that the site consisted of at least two occupation events. Some of the artefacts present classical rounded edges from wind/water weathering (desert varnish). Raw material, mostly yellow quartzite, has been observed near the site. Possibly Bronze Age tombs were identified in the proximity of the scatter on a shallow slope.

■ AK-04

The site covers an area of approximately 50 × 50 m in the proximity of a dark weathered sandstone outcrop (**fig. 29**). Very low artefacts density (less than 1 piece/m<sup>2</sup>). Quartzite was seen outcropping close to the site (approximately 50 m away). Artefacts were found on a slightly inclined surface. A few Middle Palaeolithic artefacts, mostly big flakes with heavy patination; no cores were found (an informal collection was undertaken).

■ AK-05

The site AK-05 covers ca. 50 × 50 m in the immediate proximity of an inselberg (**fig. 30**); artefacts are scattered across a flat surface. Low artefact density (0–3/m<sup>2</sup>). Flakes showing well-faceted striking platforms (Middle Palaeolithic) were observed. Cores were also collected and were identified as Levallois centripetal recurrent cores. Quartzite raw material is available in the vicinity of the site (50 m).

■ AK-06

Site on the foot of a black quartzite jabal (raw material outcrop), on a slightly dipping surface facing south (**fig. 31**). Artefacts made on quartzite, low density (0–3 per m<sup>2</sup>). Informal collection of Levallois centripetal recurrent cores and flakes (Middle Palaeolithic) (**fig. 28**).

■ AK-07

Site on top of an inselberg (above AK-06), with a flat surface dipping slightly towards the centre (**fig. 32**). Moderate to high density of artefacts with 1–7 per m<sup>2</sup>. Concentrated zones of lithic scatters were observed. Raw material outcrops directly in the proximity of the site. Exogenous raw material was found at the site (like chert, a raw material not outcropping on site). The Levallois centripetal recurrent reduction method characterizes the artefacts collected. Many cores and some Levallois flakes were identified.

■ AK-08

Site directly on a raw material outcrop (large quartzite blocks) on the south side of a small isolated mound in the middle of a confluence of the Wādī Nisāḥ and one of its small

tributaries (*shi'b*) (**fig. 33**). The site may be described as having low artefact density (0–2 per m<sup>2</sup>). Artefacts are spread across a gentle slope and display a dark patina. The site covers ca. 30 × 20 m. Artefacts are for the most part large undifferentiated/undiagnostic flakes with unidirectional scar patterns. Although the technology may be described as largely undiagnostic, the heavy weathering observed on the artefacts suggest a Pleistocene age.

■ **AK-09**

Site close to some raw material (yellow quartzite slabs/blocks). Located at the foot of the northern chain of the Wādī Nisāḥ on a slightly inclined alluvial surface (**fig. 34**). The artefacts are heavily weathered (desert varnish) in comparison to the freshly eroding raw material found at the site. The site is marked by a low density (0–1 per m<sup>2</sup>) of artefacts generally exhibiting Levallois (mainly centripetal recurrent) technology. Site spreads across an area of ca. 50 × 20 m and is likely to be Middle Palaeolithic.

■ **AK-10**

Isolated preferential centripetal preparation Levallois flake and big almond-shaped plano-convex biface. Poor visibility since the area is covered by sand. A few quartzite flakes with no specific technological attributes are present. Very low artefact density (less than 1 per m<sup>2</sup>) on a slightly sloping area.

■ **AK-11**

Site is located directly on a raw material outcrop and marked by a low to moderate artefact density (0–3 per m<sup>2</sup>). The site spreads across an area of ca. 30 × 30 m, starting on a moderate to steep slope across to a slightly dipping surface below the raw material outcrop (big blocks of dark quartzite). A small erosion gully cuts the talus slope of the jabal close by; erosion did not affect the surface scatter. Low to moderate density, mainly intermediate and large flakes (possible preform preparation on site). A good example of Middle Palaeolithic recurrent centripetal Levallois core was collected (**fig. 28**).

■ **AK-12**

A few isolated (0–1 artefacts per m<sup>2</sup>) finds spread across approximately 100 m<sup>2</sup>. The site is located close to a low-lying limestone scarp remnant. Raw material is present on the slope of the limestone hill (dark quartzite). One large biface and a few undiagnostic flakes were recorded; chronological attribution is difficult (**fig. 28**).

■ **AK-13**

The site is located on top of a limestone inselberg on a raw material source (dark quartzite), above site AK-12 (**fig. 35**). Reduction of a few single blocks of raw material; these were collected exhaustively for possible and most probable refits. Reduction of large 40 to 50 kg raw material blocks, most probably for using huge flakes as cores; this is probably a raw material procurement site. Artefacts concentrate in small patches of 2 m<sup>2</sup>.

■ **AK-14**

High density site on a low alluvial fan remnant situated on low gravel plain (unnamed alluvial deposits) (**fig. 36**). Moderate to high density site with approximately 1–7 artefacts per m<sup>2</sup>. The site spreads across an area of 100 × 200 m. AK-14 is located on a slight slope and on flat terrain delineated by low hills. Varied raw materials have been identified at the site and are incorporated within the unnamed alluvial deposits; mainly middle-sized blocks and slabs of flint/chert and a little quartzite (also possibly chalcedony). Multi-occupational site with a robust Pleistocene/Middle Palaeolithic component. Some possibly Holocene flaking



was also observed, unfortunately chronological attribution is based on undiagnostic *débitage* and lighter patination in comparison to Pleistocene material. The Pleistocene component is marked by centripetal recurrent Levallois, Levallois preferential, single and multi-platform cores, and biface technologies.

■ **AK-15**

Continuation of site AK-14. High density scatter on low alluvial fan remnant positioned on low a gravel plain west of AK-14. Approximately 1–7 artefacts per m<sup>2</sup>. Site spreads across 10 × 20 m and up onto the slopes of one of the surrounding small hill. Varied raw materials, mainly middle-sized blocks and slabs of flint/chert and quartzite (refits were made on site from an exhaustive collection). Mainly Pleistocene/Middle Palaeolithic. There may be some Holocene flakes and elongated flakes (few). The technology is characterized by centripetal recurrent Levallois, Levallois preferential (**fig. 37**).

■ **AK-16**

Low density site (0 to 1 artefact per m<sup>2</sup>) spread across an area of 20 × 50 m. The scatter is situated on a limestone inselberg directly on the raw material source (**fig. 38**). Artefacts are on a slightly inclined slope. Fine-grained raw material. A Levallois core and a few flakes indicate a likely Middle Palaeolithic surface scatter.

■ **AK-17**

Low density site (0–2 artefacts per m<sup>2</sup>) on an elevated alluvial fan remnant situated on a flat alluvial plain. A few flakes and Levallois cores. Varied types of raw material ranging from dark quartzite, flint and chert of different colours. The site spreads over an area approximately 50 × 50 m. Raw material of small dimensions has been found present near the scatter. As a function of the diminutive size of the raw material, artefacts are equally diminutive. Patination and technological observation support the idea of AK-17 dating to the Middle Palaeolithic.

■ **AK-18**

The site was found north of al-Kharj city, along the King Abdulaziz Highway that leads to the greater Riyadh area. The surface scatter is situated in the proximity of a raw material outcrop (dark quartzite) (**fig. 39**). Fine-grained ferruginous sandstone and some pieces made on chert have also been identified indicating some raw material transport to and from the site. The scatter is generally marked by its low density (0–3 artefacts per m<sup>2</sup>). The site extends over approximately 20 × 30 m. Different stages of patination were observed, indicating repeated visits to the site. Single platform unidirectional and Levallois cores were identified; also a heavy, thick laminar component coupled with an elongated flake production was observed on site.

■ **AK-19**

Surface site on the foot of a jabal, on a raw material outcrop (dark quartzite). A low density artefact scatter (0–2 artefacts per m<sup>2</sup>) on a slope marks the site. Artefacts are large to medium sized. The flakes and cores generally have a dark patination, though some have a lighter patina, indicating a multi-component site in terms of its occupational history. The principle mode of *débitage* identified fits comfortably within the Levallois production system. The scatter covers approximately 100 × 20 m and was partly destroyed by caterpillar machines on its south boundary. Diagnostic pieces, mainly Levallois cores or cores with Levallois intention (facial *débitage*) were collected. Preparation of selective striking platforms; complete peripheral preparation is very rare.

■ AK-20

Site on a low rise located in a small valley between hills and inselbergs of quartzite. Raw material was found at the site; mostly dark and yellow quartzite. The site is a low density scatter (0–4 artefacts per m<sup>2</sup>), over approximately 20 × 20 m, on a flat surface. Levallois technology (small to medium-sized flakes) and one small (probably Holocene) biface (fig. 40).

■ AK-21

Site on a low rise, the remnant of a low terrace covered by dark quartzite. Raw material present (dark and yellow quartzite). Site covers an area of approximately 50 × 20 m, on the lower and middle slope. Moderate density (0–3 artefacts per m<sup>2</sup>). Levallois technology (small to medium-sized flakes), with a collection of Levallois recurrent centripetal cores (fig. 41).

■ AK-22

Surface site in a slight dip. Moderate to high density (1–15 artefacts per m<sup>2</sup>). The site spreads across 30 × 50 m. Source of raw material present (dark and yellow quartzite) ranging from poor to high quality. A massive number of Levallois cores were collected on the site. The collection also includes blanks and some technical pieces (debordant flakes, centripetal recurrent flakes and possible end products) (figs. 43–45). Lithic industry is characterized by Levallois preferential *débitage* with a strong tendency towards point and flake production. Also, the presence of Levallois preferential bidirectional technology (with obvious preparation of the distal part of the core) is noted. Tools were also collected, such as side-scrapers and informally retouched blanks. The patination is homogeneous, as are the technological patterns. Little faceting of butts on flakes. *Débitage* and cores range from small to large size. A topographic map of the site and its surroundings was done using a total station (11/10/2011) (fig. 42). Two small test pits were dug (12/10/2011) on the site, but it proved to be only a surface site. Artefacts were incorporated within a 10 to 30 cm thick colluvial horizon situated on top of an evaporite layer.

■ AK-23

Same as AK-22 only a lower concentration, on the NE part of the dip. Numbered as a different site, it is in reality a small extension of AK-22, after a small space without artefacts. A few pieces only (fig. 41).

■ AK-24

Low density (0–2/m<sup>2</sup>) site on a raw material outcrop (dark quartzite). The site is located on the foot of a jabal, and extends across an area of 10 × 10 m. A few flakes and Levallois preferential technology were observed. Two isolated Levallois cores with preferential flake.

■ AK-25

On the foot of a jabal, close to a raw material source (red/black quartzite, and maybe a little chert). Collection of a few pieces of grey/beige chert, including Levallois and tools. Partly destroyed by bulldozers, no potential. 40 × 5 m (0–1/m<sup>2</sup>).

■ AK-26

Surface site along a lower terrace at the foot of a jabal, on a raw material (dark quartzite and chert) outcrop, flakes and cores scattered across 80 × 15 m both on the slope and flat surface, medium-size Levallois preferential. Mainly large artefacts were observed, few flakes, as they were probably washed away from the upper parts of the terrace and the jabal. Low density (0–2 per m<sup>2</sup>).

■ AK-27

Isolated finds close to a low raw material outcrop (Yamāma formation, due to the presence of fossilized wood). A blade-dimensioned blank with lateral retouch found, probably Holocene. Artefact made on non-local raw material, fine-grained grey chert.

■ AK-28

Isolated artefact found on flat gravel plain. Much rounded quartz gravel present, ca. 3–10 cm in size (unnamed alluvial deposits see-AK-14, AK-15 and geological map). Chert present at site. Artefact made on grey chert with striations, steep abrupt retouch on lateral edge of chunk.

■ AK-29

Isolated artefacts on elevation, quartz and quartzite side scraper collected. Very low concentration: attribution is not possible. Raw material not found, aside from a little quartz gravel.

## AK-22 as a reference site for the Middle Palaeolithic in Central Arabia

### MAIN DESCRIPTION OF LOCALIZATION: TOPOGRAPHY, GEOLOGY, RAW MATERIAL VARIABILITY AND TEST-TRENCHES

---

The surface scatter of AK-22 is located at the eastern portion of the southern fringe of the Rufā' Graben, within the Ashqar Marāgha segment. The 20 × 60 m scatter is on a slight east to west slope and flanked by Dughum Member inselbergs on its northern and southern sides (fig. 42).

As was stated above, the Rufā' Graben is marked by the contact between the Sulayy Limestone and the Cretaceous Dughum member and Yamāma formations. At AK-22, only the Dughum member outcrops are visible, while the closest reported Yamāma formation outcrops are 6 km to the east and west of the site. The Dughum outcrops, characterized by secondarily ferruginized and silicified, fine- to coarse-grained, beige to brown sandstone (quartzite) of the Biyāḍ formation, were identified as the source of the locally used raw material. These are present within the lowest portion of the Dughum lithology.

This quartzite is by far the most common raw material used at the site; violet siltstone is used to a lesser extent. A depression filled with recent aeolian sediments dissected by small erosion gullies marks the immediate surroundings of the site. Additional Dughum member cuestas are visible to the north-east, east and south-east of the site. Large Rufā' formation outcrops (lacustrine deposits of possible Late Quaternary age) were reported 2 km south of AK-22.

In order to assess the potential for buried artefacts and possibly estimate the age of the AK-22 assemblage, two test-pits were dug close to the erosion gullies cutting the lower portion of the site (fig. 42). Although both trenches were placed less than 2 m apart from each other, the sediment sequence revealed very distinct strata.

Test-pit 1, placed on a slight dip on the northern side of the erosion gully, presented a 15–20 cm-thick, coarse colluvium horizon containing small- to medium-sized, poorly sorted limestone clasts. This horizon also contains artefacts showing no difference in patination from the artefacts collected on the surface. Technologically, little difference was seen between the buried and the exposed artefacts indicating a rather recent displacement of this stratum. The upper colluvium horizon is on top of a cemented, evaporitic layer containing equally poorly sorted, deteriorating sandstone clast inclusions. This layer appears to be cut

by erosion gullies that have subsequently been filled in with detrital sediments; no artefacts were found in this layer.

A trench 80 cm deep was dug into the southern side of the erosion gully that cuts through the southern section of AK-22. No artefacts were found in any of the strata uncovered. The upper 10–15 cm was composed of loose, recent aeolian sediment. The underlying sedimentary unit was composed of fine- to coarse-grained deteriorated sandstone. This unit becomes more cemented towards the bottom of the section. No inclusions were observed, supporting the notion of little post-depositional disturbance. Patches of evaporite appear throughout the section.

Central for additional work and possible dating of the deposition of the AK-22 artefacts is the relation between the lower cemented strata observed in both test-pits and the activation of the erosion gully that cuts through the site. Currently, no conclusive date based on the stratigraphy revealed at the site can be given. It can be said that the displacement, which affected the colluvium horizon containing the artefacts, was fairly recent. Hopefully, additional test-pits along the course of the erosion gully may reveal artefacts that were buried prior to the latest post-depositional displacement of the scatter.

#### LEVALLOIS OCCURRENCES AT AK-22: RECURRENT VS. PREFERENTIAL

Of considerable importance for discussions concerning technological analogies and human dispersal from Africa into Arabia and expansion events within the Peninsula is the presence of specific forms of the Levallois method identified at the site AK-22 (figs. 43–45). Preferential flake production is the most frequently documented Levallois *débitage* method at the site. Nevertheless, the recurrent centripetal or recurrent uni-/bi-directional methods have also been observed. Investigation of the cores reveals a consistent preparation using the distal part of the core, a peculiarity that has already been observed in assemblages from the southern part of the Arabian Peninsula (Dhofar and Ḥaḍramawt). This particular type of preparation, in conjunction with the observed Levallois core morphologies, suggests an intrinsic connection between the AK-22 samples and the Nubian Complex sites found across North Africa and Southern Arabia (fig. 46). The material from AK-22 provides an excellent reference for discussion and comparisons with assemblages from the main Middle Palaeolithic sites known in the Arabian Peninsula, such as Jubba, al-Mundafan, Ḥaḍramawt, Dhofar, Jebel Faya [Jabal al-Fāya] and Filī (CRASSARD & HILBERT 2013).

#### Conclusion: future work

Because no Early/Mid-Holocene occupation was detected during the 2011 survey, it is important for work to concentrate on this aspect during the next survey seasons at al-Kharj. The Rufā' formation, composed of lacustrine deposits interfingered with aeolian sediments described by VASLET and colleagues (1991), will be of interest over the coming seasons of the prehistoric survey. Given the presence of Tertiary cobbles in the lacustrine portions of the exposed section in the Rufā' area (fig. 16), a Quaternary age for these deposits has been suggested by the authors. Ages of MIS 9, 7 or 5 for these sediments are conceivable. The study of the geological maps has also revealed the presence of lacustrine sediments with good potential for surveying, especially around the Nisāḥ Graben. The area around the site of al-Yamāma, and the area south-east of al-Kharj are also promising. The region of Dūmat al-Jandal, in the province of al-Jawf also offers a good prospect for new comparative work, along with the Najrān region, where Pleistocene and Holocene lakes have already been surveyed by members of our team (CRASSARD *et al.* 2013a).

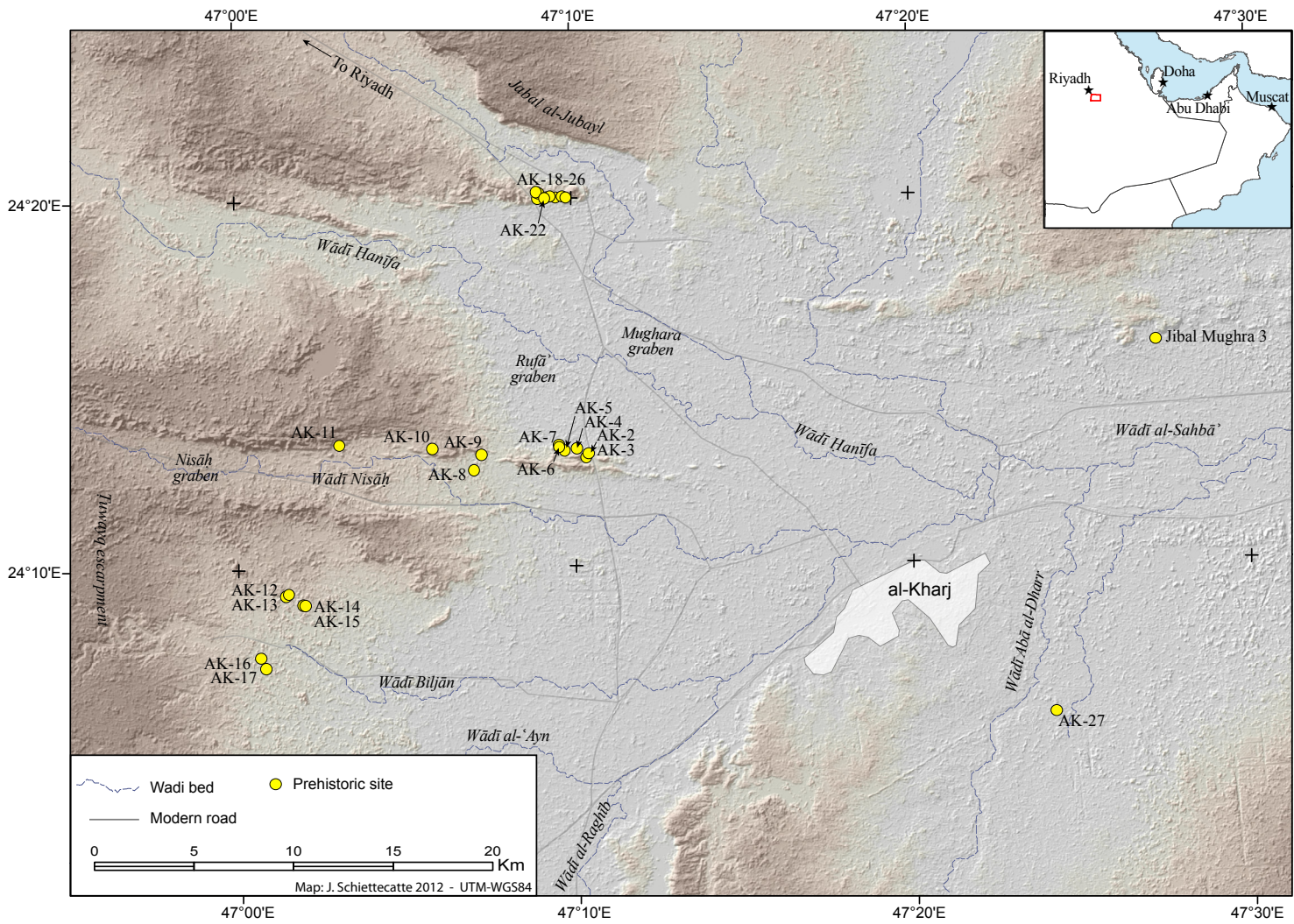


Figure 17 Map of the Palaeolithic sites in the region of al-Kharj (J. Schiettecatte – French-Saudi Archaeological Mission in al-Kharj)

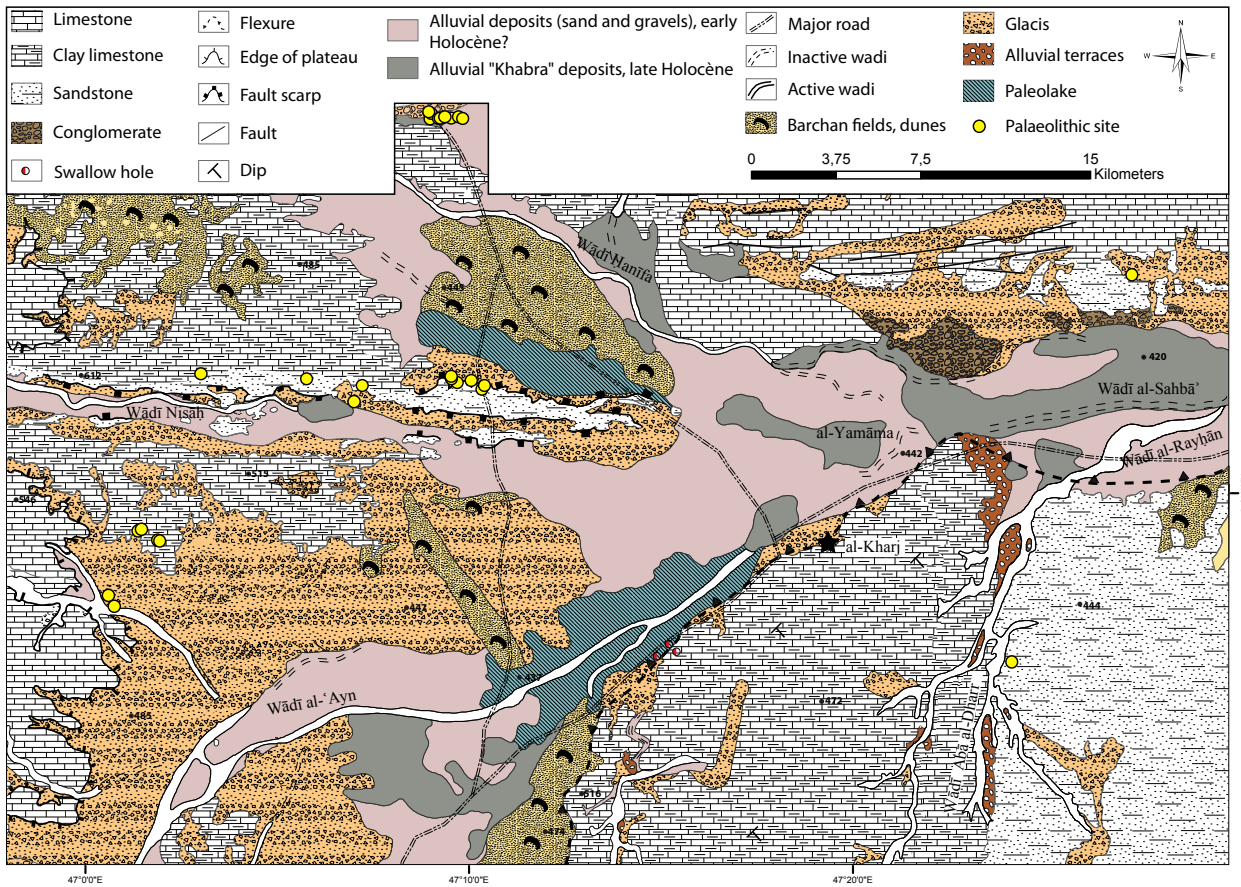


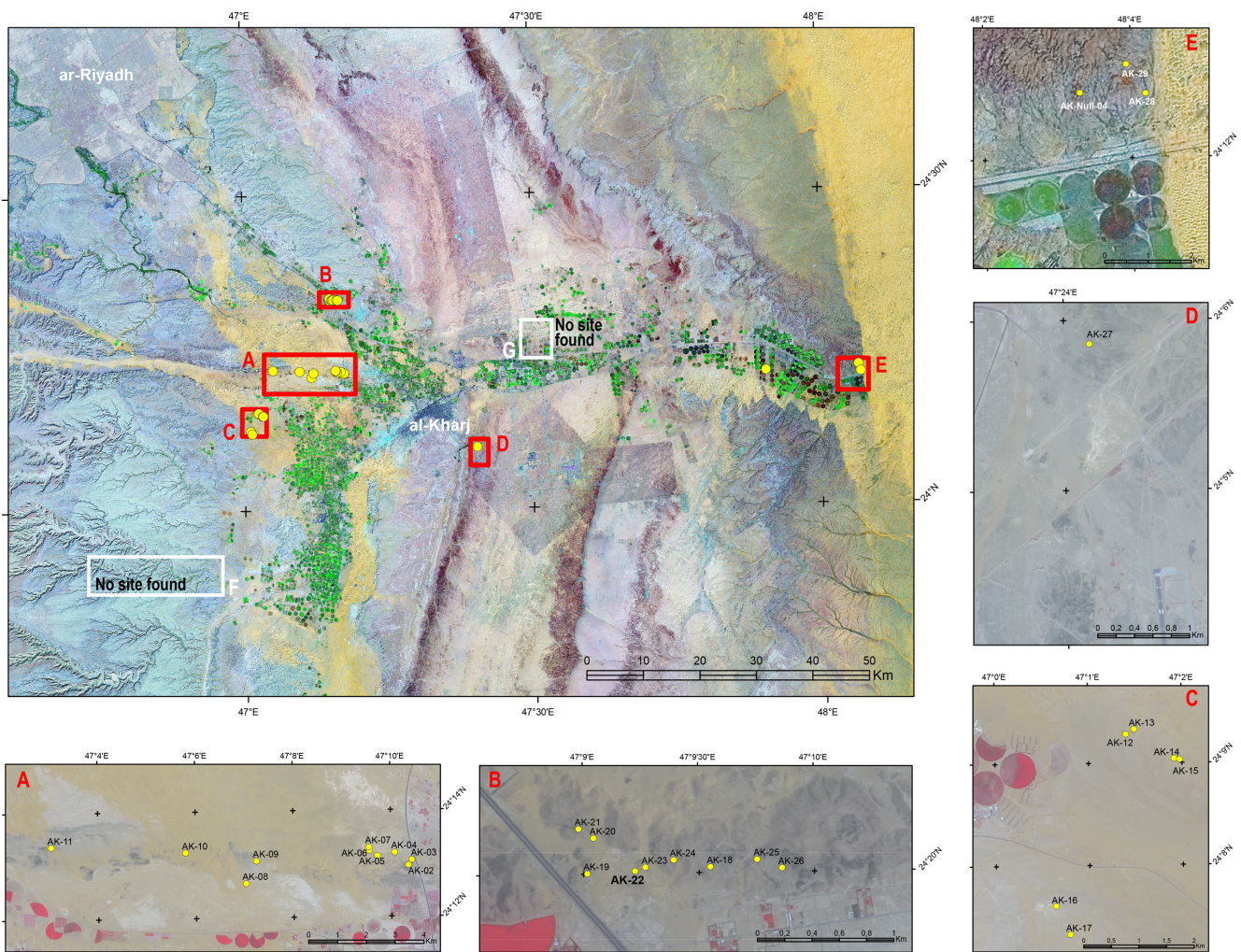
Figure 18 Palaeolithic sites superimposed on the geomorphological map of al-Kharj area (A. Chabrol, G. Fortin and J. Schiettecatte)



Figure 19 Fluvial structure incised in the Tuwayq escarpment (photograph: R. Crassard – French-Saudi Archaeological Mission in al-Kharj)



**Figure 20** Graben structure of the Wādī Nisāḥ, across the Jabal Ṭuwayq (photograph: R. Crassard – French-Saudi Archaeological Mission in al-Kharj)



**Figure 21** Map of the surveyed prehistoric areas (J. Schiettecatte – French-Saudi Archaeological Mission in al-Kharj. Map A, B, C and D include content © CNES 2012, Distribution Astrium Services/Spot Image S.A., France, all rights reserved. Map A and E include content © Landsat ETM+, all rights reserved)



**Figure 22** The Nisāh Graben  
(photograph: R. Crassard –  
French-Saudi Archaeological  
Mission in al-Kharj)



**Figure 23** The Dilam depression  
(photograph: R. Crassard –  
French-Saudi Archaeological  
Mission in al-Kharj)





**Figure 24** Site AK-01 (photograph: Y. Hilbert – French-Saudi Archaeological Mission in al-Kharj)

**Figure 25** Site AK-01: AK-01.9, preferential Levallois core with centripetal preparation; AK-01.21, recurrent centripetal non-preferential Levallois core; AK-1.14, 18, 20, 26, 35, flakes (drawings: L. Munduteguy – French-Saudi Archaeological Mission in al-Kharj)

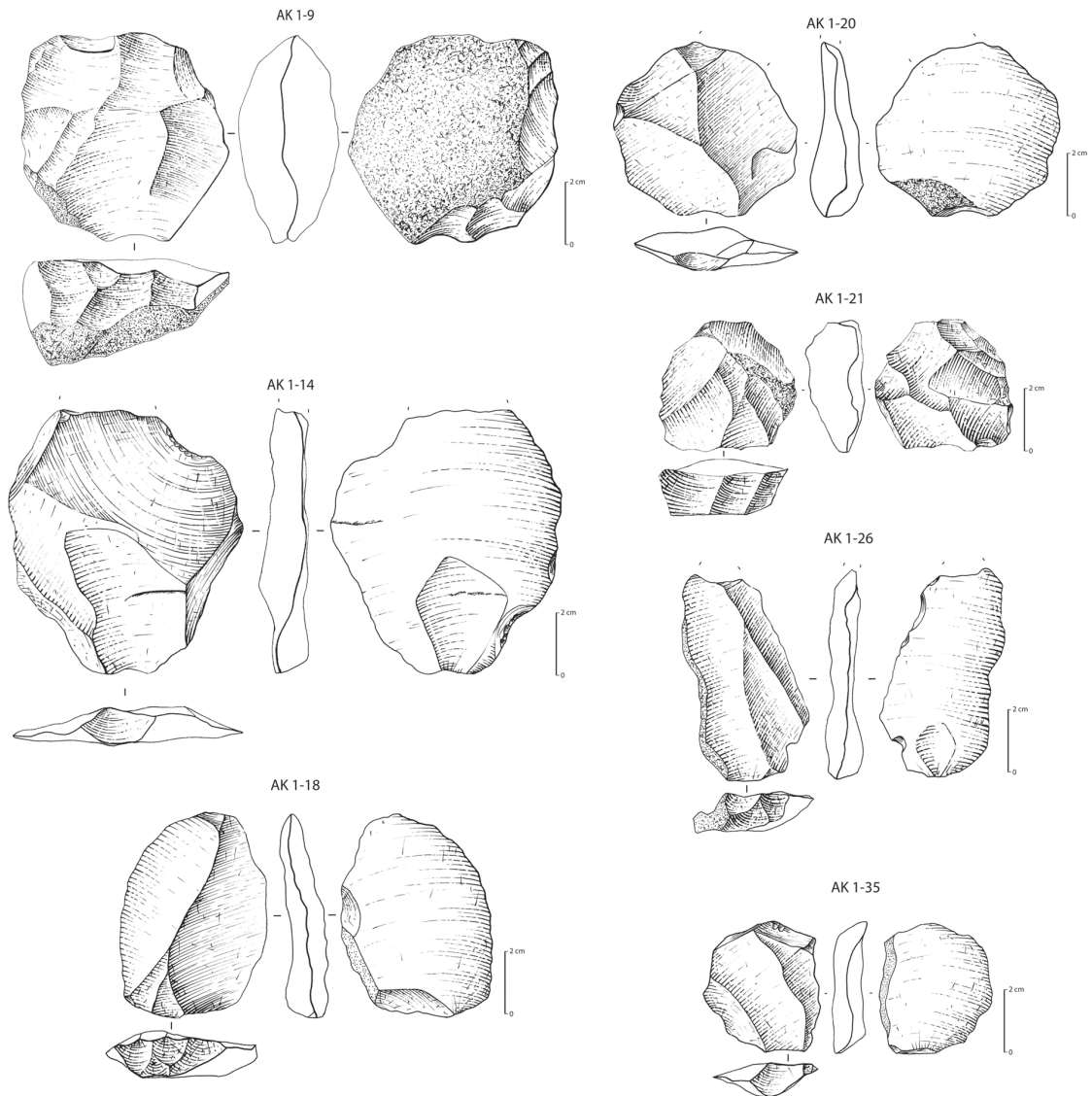


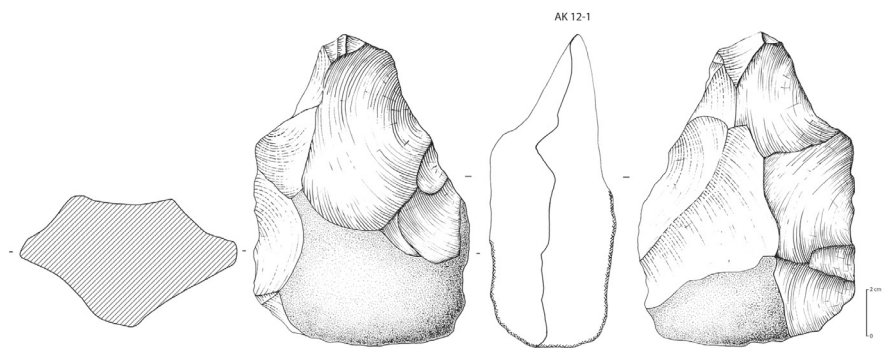
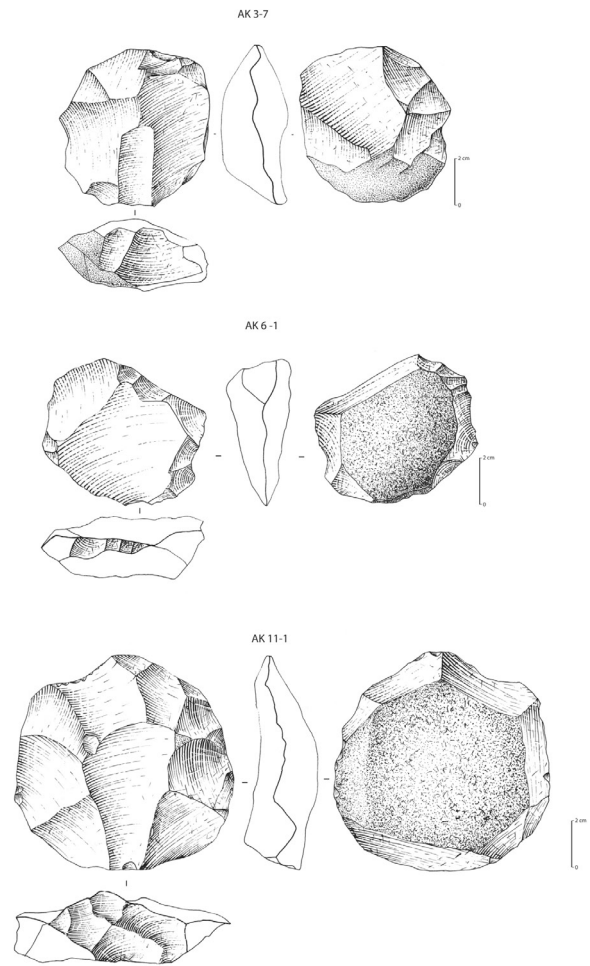


Figure 26 Site AK-02 (photograph: Y. Hilbert – French-Saudi Archaeological Mission in al-Kharj)



Figure 27 Site AK-03 (photograph: Y. Hilbert – French-Saudi Archaeological Mission in al-Kharj)

Figure 28 AK-03.7: recurrent centripetal non-preferential Levallois core; AK-06.1: preferential Levallois core with centripetal preparation; AK-11.1: preferential Levallois core with centripetal preparation; AK-12.1, sub-triangular handaxe with untrimmed but (drawings: L. Munduteguy – French-Saudi Archaeological Mission in al-Kharj)



**Figure 29** Site AK-04 (photograph: Y. Hilbert – French-Saudi Archaeological Mission in al-Kharj)

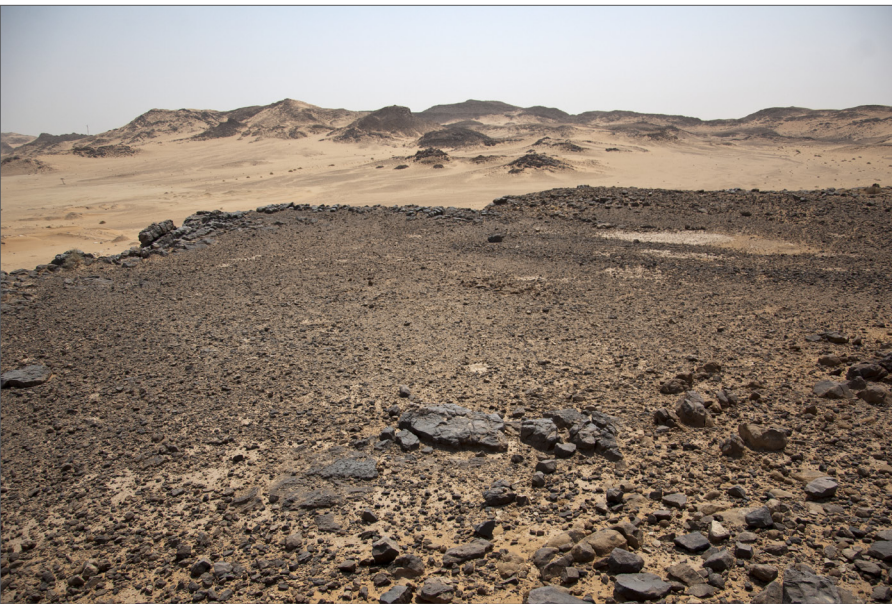


**Figure 30** Site AK-05 (photograph: Y. Hilbert – French-Saudi Archaeological Mission in al-Kharj)



**Figure 31** Site AK-06 (photograph: Y. Hilbert – French-Saudi Archaeological Mission in al-Kharj)





**Figure 32** Site AK-07 (photograph: Y. Hilbert – French-Saudi Archaeological Mission in al-Kharj)



**Figure 33** Site AK-08 (photograph: Y. Hilbert – French-Saudi Archaeological Mission in al-Kharj)



**Figure 34** Site AK-09 (photograph: Y. Hilbert – French-Saudi Archaeological Mission in al-Kharj).

**Figure 35** Site AK-13 (photograph: Y. Hilbert – French-Saudi Archaeological Mission in al-Kharj)



**Figure 36** Site AK-14 (photograph: Y. Hilbert – French-Saudi Archaeological Mission in al-Kharj)



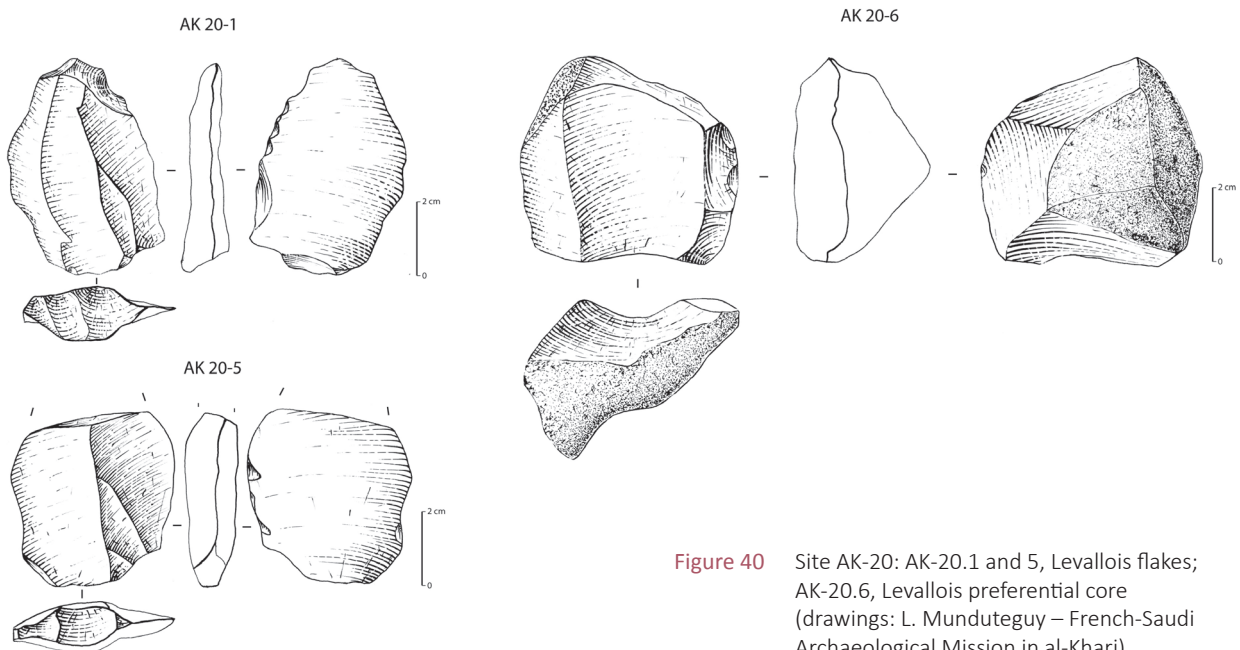
**Figure 37** Site AK-15: AK-15.13, preferential Levallois core with centripetal preparation (photograph: Y. Hilbert – French-Saudi Archaeological Mission in al-Kharj)



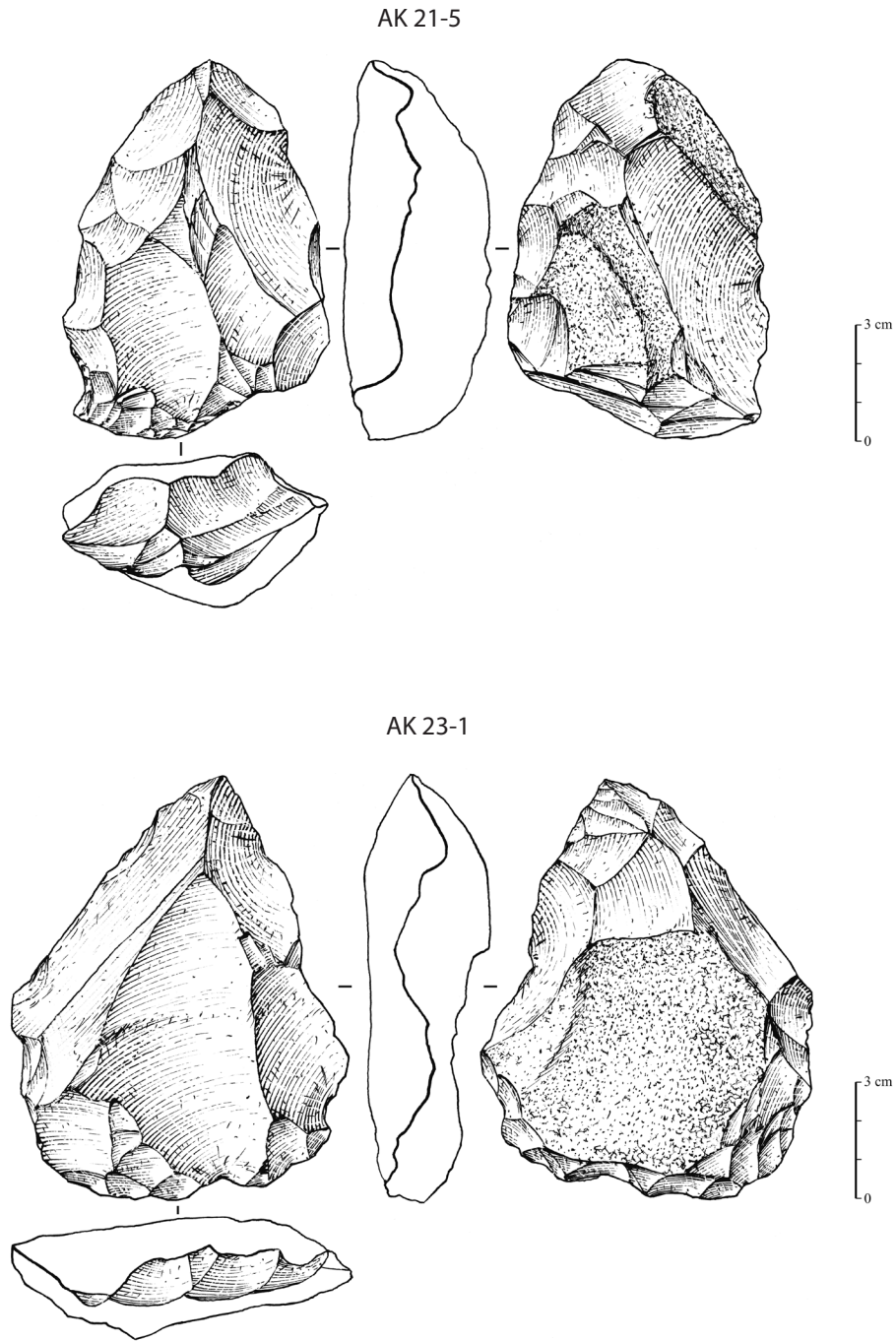
**Figure 38** Site AK-16 (photograph: Y. Hilbert – French-Saudi Archaeological Mission in al-Kharj)



**Figure 39** Site AK-18 (photograph: Y. Hilbert – French-Saudi Archaeological Mission in al-Kharj)



**Figure 40** Site AK-20: AK-20.1 and 5, Levallois flakes; AK-20.6, Levallois preferential core (drawings: L. Munduteguy – French-Saudi Archaeological Mission in al-Kharj)



**Figure 41** AK-21.5, abandoned un-struck Nubian core;  
 AK-23.1, Nubian core with type 1 preparation  
 (drawings: G. Devilder – French-Saudi  
 Archaeological Mission in al-Kharj)

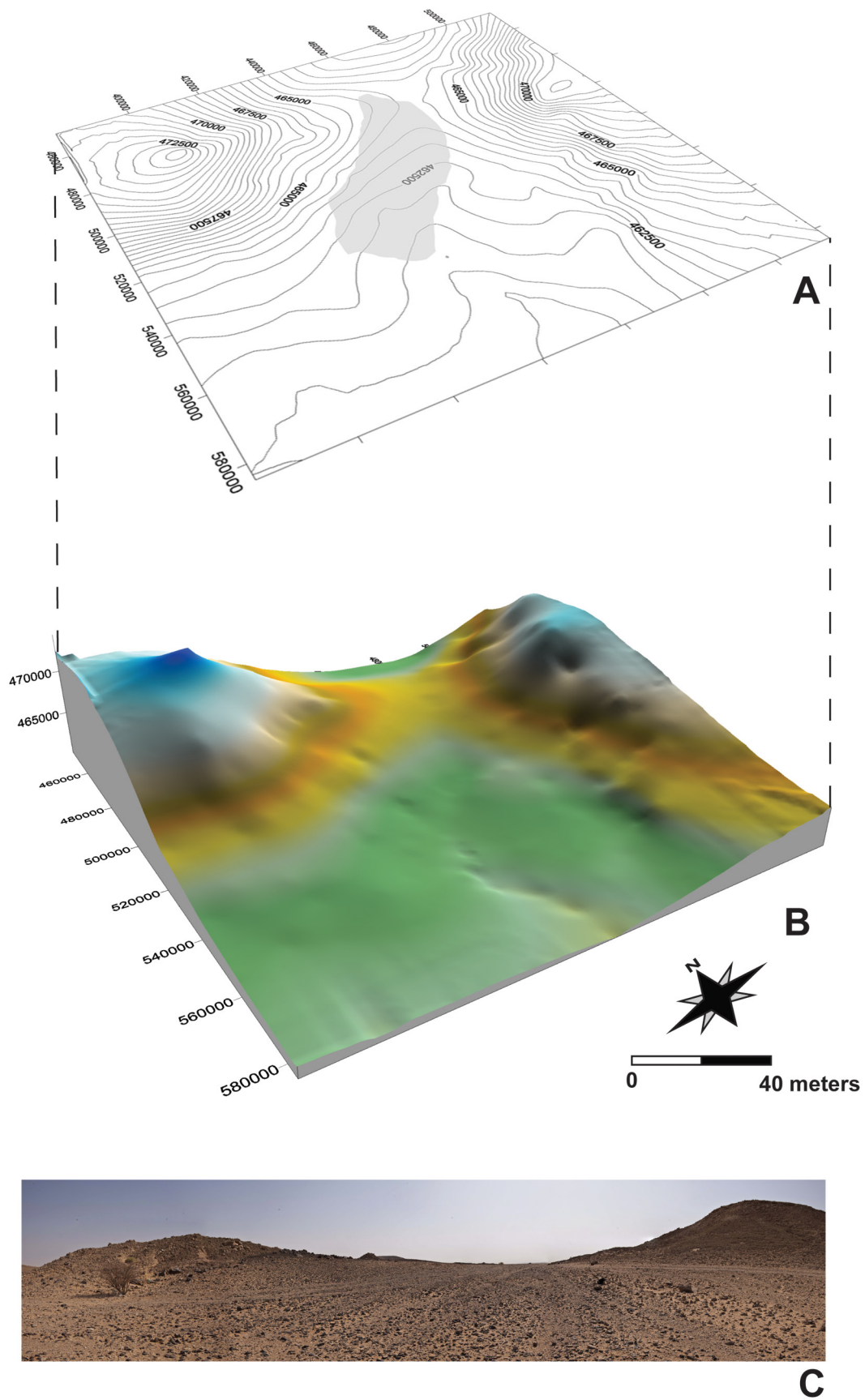
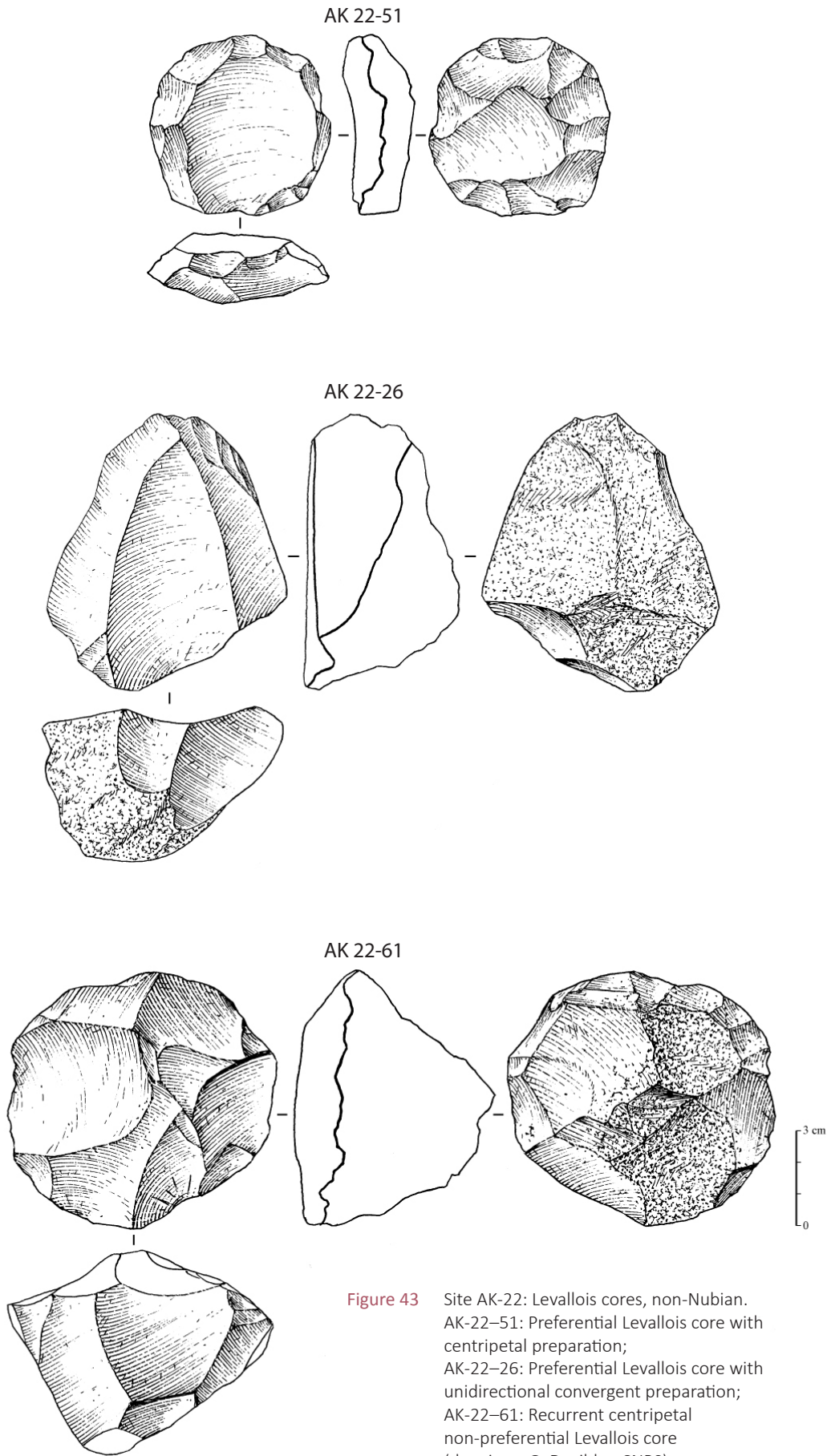


Figure 42 Topographic map of the site AK-22 (Y. Hilbert – French-Saudi Archaeological Mission in al-Kharj)





**Figure 43** Site AK-22: Levallois cores, non-Nubian.  
 AK-22-51: Preferential Levallois core with centripetal preparation;  
 AK-22-26: Preferential Levallois core with unidirectional convergent preparation;  
 AK-22-61: Recurrent centripetal non-preferential Levallois core  
 (drawings: G. Devilder, CNRS)

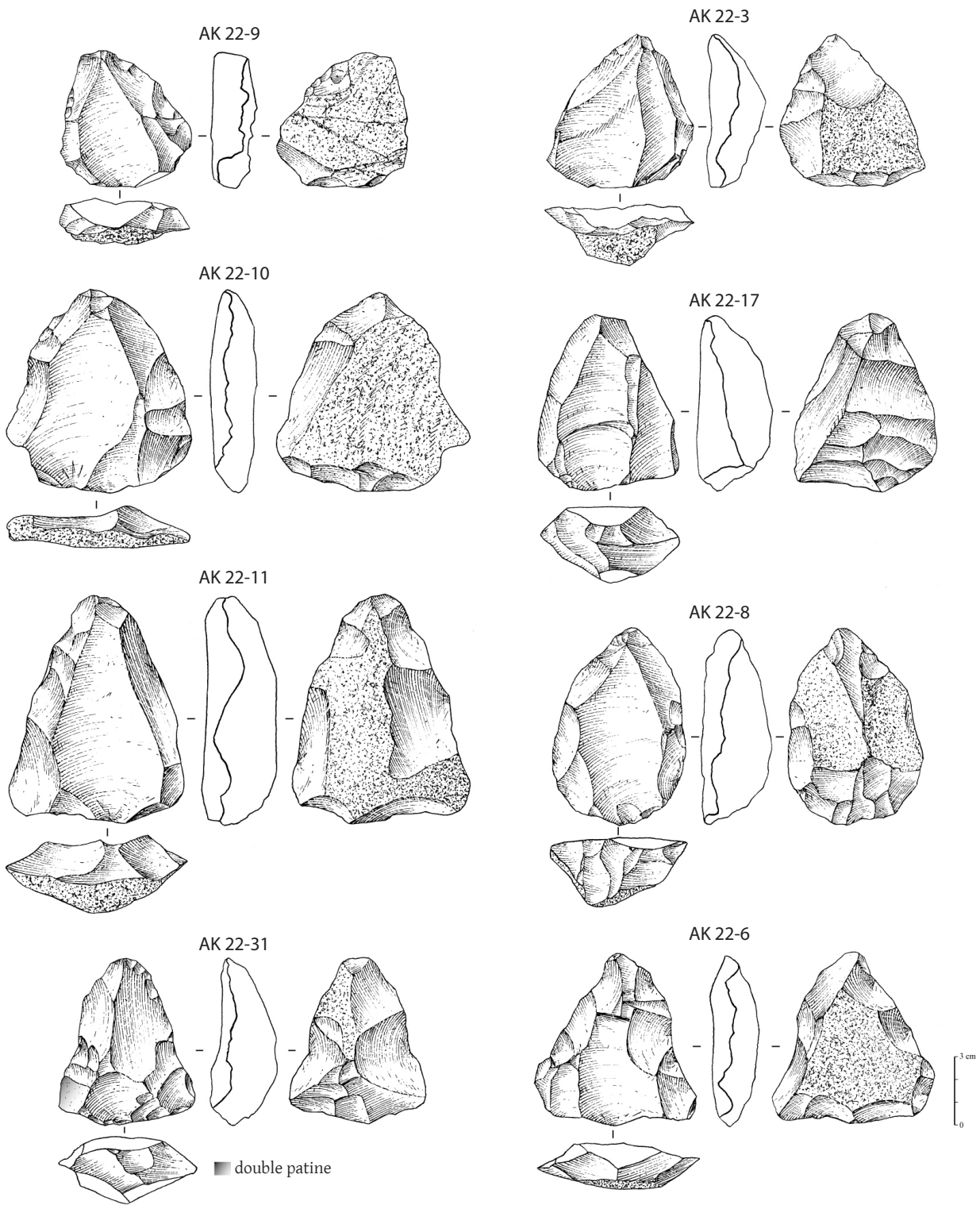


Figure 44 Site AK-22: Nubian preferential Levallois cores (drawings: G. Devilder, CNRS)

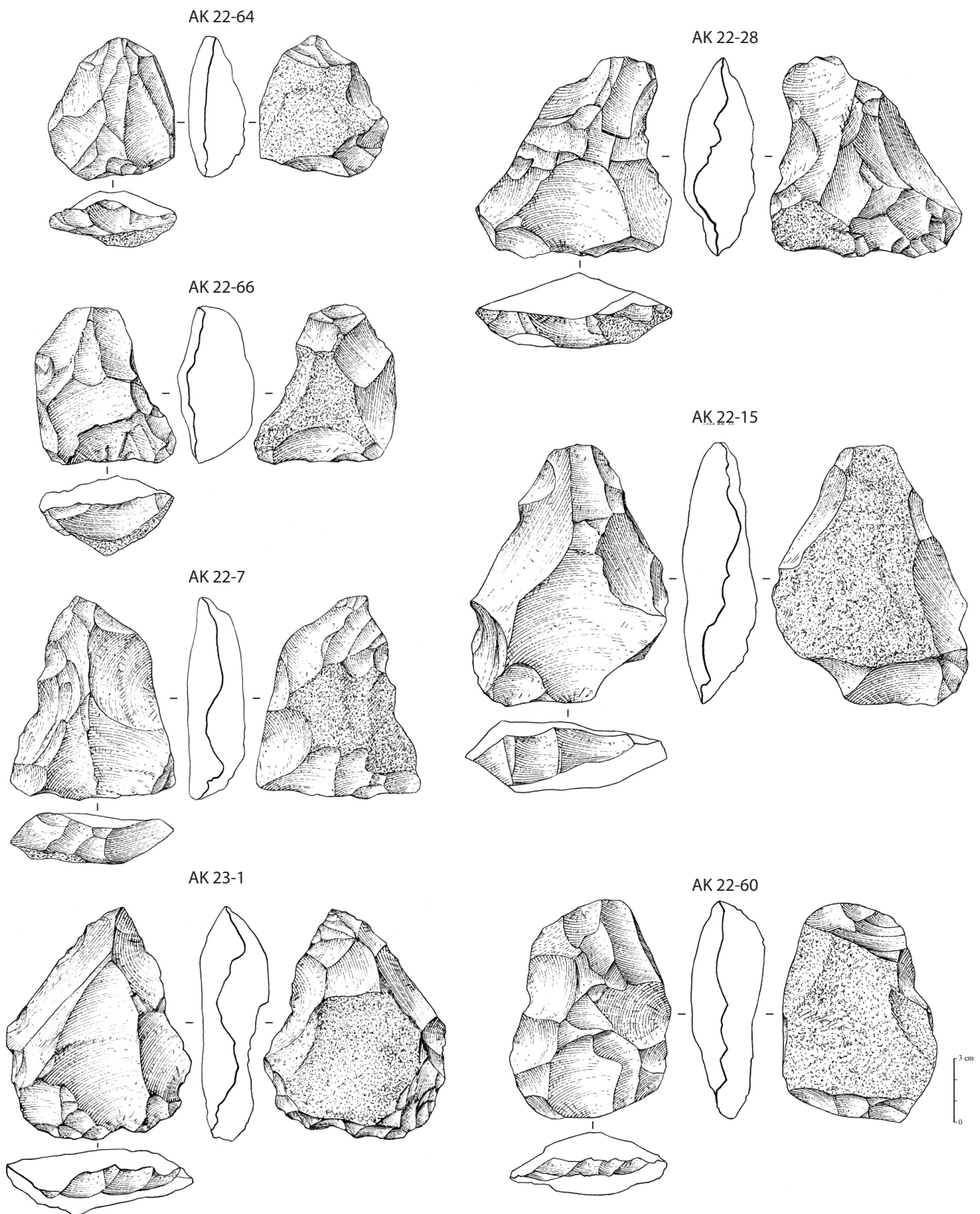
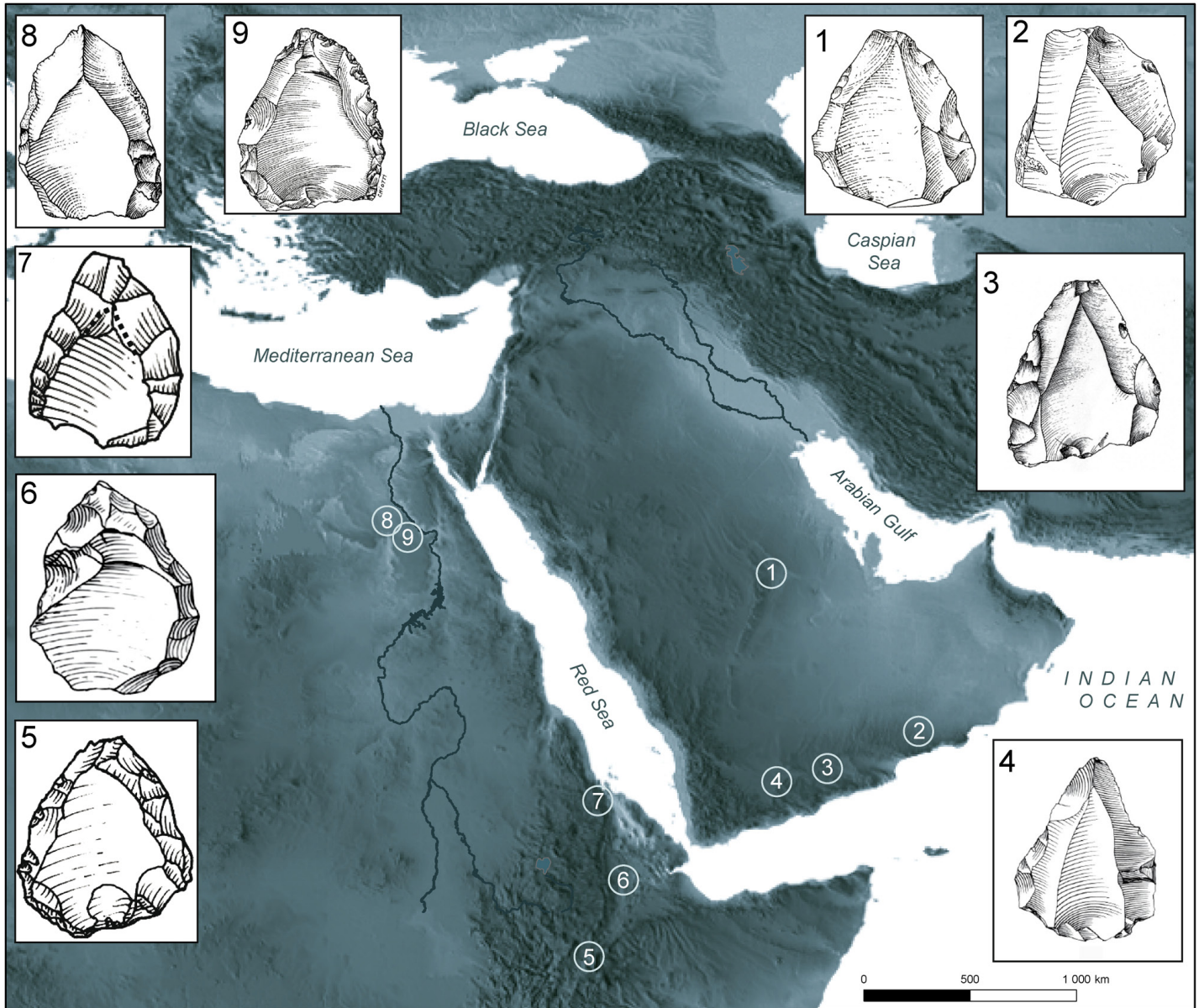


Figure 45 Site AK-22: Nubian preferential Levallois cores (drawings: G. Devilder, CNRS)



**Figure 46** Distribution of main sites with Nubian cores in Eastern Africa and Arabia (map: O. Barge, E. Régagnon, R. Crassard & Y. Hilbert, CNRS, Lyon). Illustrated cores do not represent actual size. 1. AK-22 (this study); 2. Aybut al-Auwal (ROSE *et al.* 2011); 3. Shabwa (INIZAN & ORTLIEB 1996); 4. Ḥaḍramawt (CRASSARD 2008a); 5. Aduma (YELLEN *et al.* 2005); 6. Gademotta (WENDORF & SCHILD 1974); 7. Asfet (BEYIN 2013); 8. Nazlet Khater 1 (VERMEERSCH *et al.* 1990); 9. Abydos (CHIOTTI *et al.* 2007)

## LIST OF BIBLIOGRAPHICAL REFERENCES

ADAMS R., TOMBER T. & JOHNSON E.

- 2008 Appendix 5: Bronze Age and Iron Age pottery, and Classical and Islamic pottery catalogue. In G. Barker, D. Gilbertson & D. Mattingly (eds.), *Archaeology and Desertification The Wadi Faynan Landscape Survey. Southern Jordan*. Oxford: Oxbow Books: 1–50.

AKOPIAN A.M.

- 2010 Les fouilles du secteur 4. In J.-Fr. Salles & A. V. Sedov (eds.) *Qāni'. Le port antique du Ḥaḍramawt entre la Méditerranée, l'Afrique et l'Inde. Fouilles russes 1972, 1985-1989, 1991, 1993-1994* (Indicopleustoi, Archaeologies of the Indian Ocean, 6). Turnhout: Brepols: 123–148.

AMIRKHANOV H.

- 1991 *Palaeolithic in South Arabia*. Moscow: Scientific World [in Russian].  
1994 Research on the Palaeolithic and Neolithic of Hadramaut and Mahra. *Arabian Archaeology and Epigraphy* 5: 217–228.  
2006 *Stone Age of South Arabia*. Moscow: Nauka [in Russian].  
2008 *Cave al-Guza the multilayer site of Oldowan in South Arabia*. Moscow: TAUS.

ARMITAGE S.J., JASIM S.A., MARKS A.E., PARKER A.G. ET ALII

- 2011 The southern route “out of Africa”: evidence for an early expansion of modern humans into Arabia. *Science* 331: 453–456.

ANDREWS P.J. & WHYBROW P

- 2005 Taphonomic observations on a camel skeleton in a desert environment in Abu Dhabi. *Paleontologica Electronica* 8/1: 17 p.

[AL-]ASKAR A.

- 2002 *Al-Yamama in the Early Islamic Era*. (Salsala dirāsāt Athariyya Muḥakma, 10). Dryden – Riyadh: Ithaca Press – King Abdul Aziz Foundation for Research and Archives

ATLAS

- 1999 *Aṭlas al-Mamlaka al-‘arabiyya al-sa‘ūdiyya* (ṣadara bi-munasābat murūr mi‘at ‘ām ‘alā ta’sīs al-Mamlaka al-‘arabiyya al-sa‘ūdiyya). Riyadh: Wizārat al-ta‘līm al-‘ālī.

- AUGÉ M.  
1988 Révision du lézard *Uromastix europaeus* (Reptilia, Lacertilia) de l'Oligocène français. *Revue de Paléobiologie* 7/2: 317–325.
- AUGÉ M.  
2005 *Évolution des lézards du Paléogène en Europe*. (Mémoires du Muséum National d'Histoire Naturelle, Volume 192). Paris: Publications Scientifiques du Muséum.
- AVNER U., NEHMÉ L. & ROBIN CH.  
2013 A rock inscription mentioning Tha'labā, an Arab king from Ghassān. *Arabian Archaeology and Epigraphy* 24-2: 237–256.
- BADRE L.  
1991 Le sondage stratigraphique de Shabwa (1976–1981). *Syria* LXVIII: 229–314.
- BAGATTI B.  
1947 *I monumenti di Emmaus el-Qubeibeh e dei dintorini. Risultato degli scavi e sopralluoghi negli anni 1873, 1887–90, 1900–2, 1940–1944* (Pubblicazione dello Studium Biblicum Franciscanum, 4). Jerusalem.
- [AL-]BAKRĪ, ABŪ 'UBAYD 'ABD ALLĀH B. 'ABD AL-'AZĪZ ... AL-ANDALUSĪ / ED. M. AL-SAQĀ  
1945 [Mu'jam] = *Mu'jam mā 'sta'jam min asmā' al-bilād wa-'l-mawāḍi'* (al-Ma'had al-khalīfī li-l-abḥāth al-maghribiyya, Bayt al-Maghrib). 4 vol. 1945. Cairo: Maṭba'at Lajnat al-Ta'līf wa-'l-Tarjama wa-'l-Nashr.
- BALĀDHURĪ, ABŪ 'L-ḤASAN / ED. R.M. RIDWĀN  
1932 [Futūḥ, text] = *Futūḥ al-Buldān*. Ed. Riḍwān Muḥammad Riḍwān. 1932. Cairo: al-Maṭba'a al-Miṣriyya.
- BALĀDHURĪ, ABŪ 'L-ḤASAN / ED. PH.KH. HITTI  
1916 [Futūḥ, translation] = *The origins of the Islamic state being a translation from the Arabic, accompanied with annotations, geographic and historic notes, of the "Kitāb futūḥ al-buldān" of al-Imām abu-l 'Abbās Aḥmad ibn Jābir al-Balādhurī*. Vol. 1 (Studies in History, Economics and Public Law, vol. LXVIII, no. 163). New York: Columbia University [reedited in 2002: Georgias Press].
- BAR-YOSEF O. & MEIGNEN L.  
1992 Insights into Levantine Middle Paleolithic Cultural Variability. In H. Dibble & P. Mellars (eds.) *The Middle Palaeolithic: Adaptation, Behavior and Variability*. Philadelphia: University Museum, University of Pennsylvania: 163–182.
- BAR-YOSEF O & VAN PEER P.  
2009 The chaîne opératoire approach in Middle Paleolithic archaeology. *Current Anthropology* 50/1: 103–131.
- BARHAM L. & MITCHELL P.  
2008 *The First Africans: African Archaeology from the Earliest Toolmakers to most Recent Foragers*. Cambridge: Cambridge University Press.

- BARONE R.  
1986 *Anatomie comparée des mammifères domestiques. Tome 1. Ostéologie.* Paris: Vigot Frères.
- BARTINGTON G. & CHAPMAN C.E.  
2004 A high-stability fluxgate magnetic gradiometer for shallow geophysical survey applications. *Archaeological Prospection* 11/1: 19–34.
- BEECH M.  
2007 The large mammal and reptiles bones. In A. Poulter (ed.), *Nicopolis ad Istrum III: A late Roman and early Byzantine City: the Finds and the biological Remains* (Reports of the Research Committee of the Society of Antiquaries of London, 67). London: Oxbow books: 154–197.
- BEEG K., BEEG C. & ABRAMOV A.  
2008 *Mellivora capensis*. In IUCN 2011, *IUCN Red List of Threatened Species. Version 2011.2*. [downloaded on December 20, 2011].
- BEHRENS-ABOUSEIF D.  
2004 The Fire of 884/1479 at the Umayyad Mosque in Damascus and an Account of its Restoration. *Mamluk Studies Review* 8/1: 279–297.
- BEHRENSMEYER A.K.  
1978 Taphonomic and ecologic information from bone weathering. *Paleobiology* 4/2: 150–162.
- BELL R.C.  
1969 *Board and table games from many civilizations.* Oxford: Oxford University Press.
- BERGER J.-FR., BRAVARD J.P., PURDUE L., BENOIST A. ET ALII  
2012 Rivers of the Hadramawt watershed (Yemen) during the Holocene: Clues of late functioning. *Quaternary International* 266: 142–161.
- BETTINI L.  
1998 Alimentation et poésie : un exemple du “Taghil al-Gahiliyya”. *Arabica* 45: 73–87.
- BEYIN A.  
2013 A surface Middle Stone Age assemblage from the Red Sea coast of Eritrea: Implications for Upper Pleistocene human dispersals out of Africa. *Quaternary International* 300: 195–212.
- BIBBY T.G.  
1973 *Preliminary survey in East Arabia 1968* (Jutland Archaeological Society Publications, 12). Copenhagen: Gyldendal.
- BIN KHAMĪS A.M.  
1978 *Muʿjam al-Yamāma* (2 volumes). Riyadh.

BINFORD L.R.

1981 *Bones: ancient men and modern myths*. New York: Academic Press.

BLACHÈRE R.

1952 *Histoire de la littérature arabe, des origines à la fin du xv<sup>e</sup> siècle de J.-C.* Paris: Librairie d'Amérique et d'Orient Adrien Maisonneuve [vol. 1–3: 1952, 1964 and 1966].

BOËDA É.

1991 Approche de la variabilité des systèmes de production lithique des industries du Paléolithique inférieur et moyen: chronique d'une variabilité attendue. In C. Karlin (ed.) *Préhistoire et ethnologie. Le geste retrouvé*. Paris : Maison des Sciences de l'Homme: 37-79.

1994 *Le concept Levallois : variabilité des méthodes* (Monographie du CRA 9). Paris: CNRS Éditions.

BOESSNECK J.

1995 Birds, reptiles, and amphibians. In Ø. S. LaBianca & A von den Driesch (eds.), *Faunal remains: taphonomical and zooarchaeological studies of the animal remains from Tell Hesban and vicinity* (Hesban 13). Berrien Springs: Andrews University Press: 131–168.

BOESSNECK J., MÜLLER H.-H. & TEICHERT M.

1964 Osteologische Unterscheidungsmerkmale zwischen Schaf (*Ovis aries*, Linné) und Ziege (*Capra hircus*, Linné). *Kühn-Archiv* 78: 1–129.

BONILAURI S., BOËDA É., GRIGGO G., AL-SAKHEL H. & MUHESEN S.

1990 Un éclat de silex moustérien coincé dans un bassin d'autruche (*Struthio camelus*) à Umm El Tlel (Syrie centrale). *Paléorient* 33/2: 39–46.

BORDES F.

1961 *Typologie du Paléolithique ancien et moyen* (Cahiers du Quaternaire, 1). Paris: Éditions du CNRS.

BOUCHARLAT R.

2001 Les galeries de captage dans la péninsule d'Oman au premier millénaire avant J.-C. : Questions sur leurs relations avec les galeries du plateau iranien. In P. Briant (ed.) *Irrigation et drainage dans l'Antiquité : Qanats et canalisations souterraines en Iran, en Égypte et en Grèce*. Paris: Persika 2: 157–183.

2003 Iron Age Water-draining Galleries and the “Iranian qanât”. In D. T. Potts, H. al-Naboodah & P. Hellyer (eds.) *Proceedings of the first international conference on the archaeology of the United Arab Emirates (Abu Dhabi, 15-18 april 2001)*. London: Trident: 162–172.

BOUZIGARD A.C. & SAIDEL B.A.

2012 A note on the dating of the clay smoking pipes collected in the course of two archaeological surveys conducted in Saudi Arabia: the Comprehensive Survey of



Saudi Arabia (1976–1981) and Michael Gilmore’s survey of the Darb al-Hajj. *Arabian Archaeology and Epigraphy* 23 (2012): 116–124.

CAMPBELL W.H.

2003 *Introduction to Geomagnetic Fields*. 2nd ed. Cambridge: Cambridge University Press.

CASKEL W.

1960 Al-A’shà Maymūn b. Qays . In *Encyclopédie de l’Islam, nouvelle édition*. Vol. I: 710–711.

1966 *Ġamharat an-nasab. Das genealogische Werk des Hišām ibn Muḥammad al-Kalbī*. 2 vol. Leiden: Brill.

CATON-THOMPSON G.

1938 Geology and archaeology of the Hadramaut, Southern Arabia. *Nature* 142: 139–142.

1953 Some Palaeoliths from South Arabia. *Proceedings of the Prehistoric Society* 19:189–218.

CAUSSIN DE PERCEVAL A.P.

1847–1848 *Essai sur l’histoire des Arabes avant l’islamisme, pendant l’époque de Mahomet, et jusqu’à la réduction de toutes les tribus sous la loi musulmane*. 3 vol. Paris: Firmin-Didot [reed. Graz: Akademische Druck- u. Verlagsanstalt, 1967].

CHARPENTIER V. & CRASSARD R.

2013 Back to Fasad... and the PPNB controversy. Questioning a Levantine origin for Arabian Early Holocene projectile points technology. *Arabian Archaeology and Epigraphy* 24/1: 28–36.

CHIOTTI L., OLSZEWSKI D.I., DIBBLE H.L., MCPHERRON S.R. ET ALII

2007 Paleolithic Abydos: Reconstructing Individual Behaviors across the High Desert Landscape. In Z. Hawass & J. Richards (eds.) *The Archaeology and Art of Ancient Egypt: Essays in Honor of David B O’Connor*. Cairo: Supreme Council of Antiquities Press: 169–183.

CLARK G.

1995 The mammalian remains from the early Byzantine Fort of Upper Zohar. In R. P. Harper (ed.), *Upper Zohar: an early Byzantine fort in Palestina Tertia. Final report of excavations in 1985–1986* (British Academy Monographs in Archaeology, 9). Oxford: Oxford University Press: 49–84.

CLAVEL B.

2005 Approvisionnement en viande et poissons dans un établissement religieux du XVII<sup>e</sup> siècle : les Feuillantines de Paris. *Histoire médiévale et archéologique* 19: 111–122.

CLEUZIOW S.

1989 The Early Dilmun Period (Third and Early Second Millennium BC). In P. Lombard & M. Kervran (eds.) *Bahrain National Museum, Archaeological Collections. I. A selection of pre-Islamic antiquities from excavations 1954–1975*. Manama: Directorate of Museum and Heritage: 11–50.

- COHEN A. & SERJEANTSON D.  
 1996 *A manual for the identification of bird bones from archaeological sites*. London: Archetype Publications Ltd. [revised edition].
- COOPER J.S. & POOLE D.F.G.  
 1973 The dentition and dental tissues of the agamid lizard *Uromastix*. *Journal of Zoology, London* 169: 85–100.
- COOPER J.S., POOLE D.F.G. & LAWSON R.  
 1970 The dentition of agamid lizards with special reference to tooth replacement. *Journal of Zoology, London* 162: 85–98.
- COURTILLOT V. & LE MOUËL J.L.  
 1988 Time Variations of the Earth's Magnetic Field: From Daily to Secular. *Annual Review of Earth and Planetary Sciences* 16/1: 389–476.
- CRASSARD R.  
 2008a *La Préhistoire du Yémen. Diffusions et diversités locales, à travers l'étude d'industries lithiques du Hadramawt* (BAR International Series S1842). Oxford: Archaeopress.  
 2008b The “Wa'shah method”: an original laminar debitage from Hadramawt, Yemen. *Proceedings of the Seminar for Arabian Studies* 38: 3–14.  
 2009a Middle Paleolithic in Arabia: the view from the Hadramawt region, Yemen. In M. D. Petraglia & J. I. Rose (ed.) *The Evolution of Human Populations in Arabia. Paleoenvironments, Prehistory and Genetics*. London: Springer Academic Publishers: 151–168.  
 2009b Modalities and characteristics of human occupations in Yemen during the Early/Mid-Holocene. *Comptes Rendus de l'Académie des Sciences - Geoscience* 341: 713–725.
- CRASSARD R. & DRECHSLER P.  
 2013 Towards new paradigms: multiple pathways for the Arabian Neolithic. *Arabian Archaeology and Epigraphy* 24/1: 3–8.
- CRASSARD R., GUY H., SCHIETTECATTE J. & HITGEN H.  
 2011 Reuse of tombs or cultural continuity? The case of tower-tombs in Shabwa governorate (Yemen). In L. Weeks (ed.) *Death and Burial in Arabia and Beyond. Multidisciplinary perspectives* (BAR International Series 2107, Society for Arabian Studies Monographs No. 10), Oxford: Archaeopress: 173–177.
- CRASSARD R. & HILBERT Y.H.  
 2013 A Nubian Complex Site from Central Arabia: Implications for Levallois Taxonomy and Human Dispersals during the Upper Pleistocene. *PLoS ONE* 8/7: e69221. doi:10.1371/journal.pone.0069221
- CRASSARD R., PETRAGLIA M.D., DRAKE N.A., BREEZE P. ET ALII  
 2013a Middle Palaeolithic and Neolithic Occupations around Mundafan Palaeolake, Saudi Arabia: Implications for Climate Change and Human Dispersals. *PLoS ONE* 8/7: e69665. doi:10.1371/journal.pone.0069665

- CRASSARD R., PETRAGLIA M.D., PARKER A.G., PARTON A. *ET ALII*  
 2013b Beyond the Levant: First Evidence of a Pre-Pottery Neolithic Incursion into the Nefud Desert, Saudi Arabia. *PLoS ONE* 8/7: e68061. doi:10.1371/journal.pone.0068061
- CRASSARD R. & THIÉBAUT C.  
 2011 Levallois points production from eastern Yemen and some comparisons with assemblages from East-Africa, Europe and the Levant. In J.-M. Le Tensorer, R. Jagher & M. Otte (eds.) *The Lower and Middle Palaeolithic in the Middle East and neighbouring regions*, Liège: ERAUL.
- CREW H.  
 1975 An evaluation of the relationship between the Mousterian complexes of the Eastern Mediterranean: a technology perspective. In F. Wendorf & A. E. Marks (eds.) *Problems in Prehistory: North Africa and Levant*. Dallas: SMU Press: 427–437.
- CROFT P.  
 1995 Bird and small remains from Upper Zohar. In R. P. Harper (ed.), *Upper Zohar: an early Byzantine fort in Palestina Tertia. Final report of excavations in 1985-1986* (British Academy Monographs in Archaeology 9). Oxford: Oxford University Press: 87–95.
- CUNNINGHAM P.  
 2001 Notes on the diet, survival rate, and burrow specifics of *Uromastix aegyptius microlepis* from the United Arab Emirates. *Asiatic Herpetological Research* 9: 30-33.  
 2013 Daily activity pattern and diet of a population of the Spiny-tailed Lizard, *Uromastix aegyptius microlepis*, during summer in the United Arab Emirates. *Zoology in the Middle East* 2: 37–46.
- DAYAN T., WOOL D. & SIMBERLOFF D.  
 2002 Variation and covariation of skulls and teeth: modern carnivores and the interpretation of fossil mammals. *Paleobiology* 28/4: 508–526.
- DE CUPERE B., DURU R. & UMURTAĞ G.  
 2008 Animal husbandry at the Early Neolithic to early Bronze age site of Bademağacı (Antalya province, SW Turkey): evidence from the faunal remains. In E. Vila, L. Gourichon, A. M. Choyke & H. Buitenhuis (eds.), *Archaeozoology of the Near East VIII*. (TMO 49). Lyon: Maison de l’Orient et de la Méditerranée: 367–405.
- DE GAURY G.  
 1945 A Burial Ground in Al-Kharj. *The Geographical Journal* 106/3: 152–153.
- DELAGNES A.  
 1992 *L’organisation de la production lithique au Paléolithique Moyen. Approche technologique à partir de l’étude des industries de la Chaise de Vouthon (Charente)*, PhD dissertation, University of Paris X-Nanterre.

- DELAGNES A., CRASSARD R., BERTRAN P. & SITZIA L.  
 2013 Human and cultural dynamics in southern Arabia at the end of the Middle Paleolithic. *Quaternary International* 300: 234–243.
- DELAGNES A., JAUBERT J & MEIGNEN L.  
 2007 Les technocomplexes du Paléolithique moyen en Europe occidentale dans leur cadre diachronique et géographique. In B. Vandermeersch & B. Maureil (eds.) *Les Néandertaliens, biologie et culture*. Paris: Éditions CTHS: 213–219.
- DELAGNES A. & MEIGNEN L.  
 2006 Diversity of lithic production systems during the Middle Palaeolithic in France. Are there any chronological trends? In E. Hovers & S. Kuhn (eds.) *Transition before the transition*. Santa Barbara: Springer: 85–107.
- DELAGNES A., TRIBOLO C., BERTRAN P., BRENET M. *ET ALII*  
 2012 Inland human settlement in southern Arabia 55,000 years ago. New evidence from the Wadi Surdud Middle Paleolithic site complex, western Yemen. *Journal of Human Evolution* 63/3: 452–474.
- DIBBLE H.-L. & BAR-YOSEF O  
 1995 *The Definition and Interpretation of Levallois Technology* (Monographs in World Archaeology, 23). Madison: Prehistory Press.
- DRIESCH A. VON DEN  
 1976 *A guide to the measurement of animal bones from archaeological sites* (Peabody Museum Bulletin 1). Harvard: Harvard University Press.
- DRIESCH A VON DEN & BOESSNECK J.  
 1995 Final report on the zooarchaeological investigation of animal bones finds from Tell Hesban, Jordan. In Ø. S. LaBianca & A von den Driesch (eds.), *Faunal remains: taphonomical and zooarchaeological studies of the animal remains from Tell Hesban and vicinity* (Hesban 13). Berrien Springs: Andrews University Press: 65–108.
- DRIESCH A. VON DEN & DOCKNER A.  
 2002 Animal exploitation in medieval Siraf, Iran, based on the faunal remains from the excavations at the Great Mosque. *Bonner zoologische Beiträge* 50/3: 227–247.
- DRIESCH A VON DEN & OBERMAIER M.  
 2007 The hunt for wild dromedaries during the 3rd and 2nd millennia BC on the United Arab Emirates coast Camel bone finds from the excavations at Al Sufouh 2, Dubai, UAE. *Documenta Archaeolobiologiae* 6: 133–167.
- DURAND C.  
 2011 Pottery Study. In L. Nehmé (ed.) *Report on the Fourth Excavation Season (2011) of the Madâ'in Sâlih Archaeological Project*. <http://halshs.archives-ouvertes.fr/halshs-00671451>: 327–361.

- EISENMANN V. & BECKOUCHE S.  
 1986 Identification and discrimination of metapodials of modern and Pleistocene Equus, wild and domestic. In R. H. Meadow & H.-P. Uerpmann (eds.), *Equids in the Ancient World* (Beihefte zum Tübinger Atlas des Vorderen Orients, Reihe A). Wiesbaden: 117–163.
- FERNÁNDEZ H.  
 2001 *Ostéologie comparée des petits ruminants eurasiatiques sauvages et domestiques (genres Rupicapra, Ovis, Capra et Capreolus) : diagnose différentielle du squelette appendiculaire*. PhD Dissertation. Geneva University.
- FIEY J.M.  
 1969 Diocèses syriens orientaux du Golfe Persique. In *Mémorial Mgr Gabriel Khoury-Sarkis*. Louvain : Impr. orientaliste: 177-219 [Reed. J.-M. Fiey 1979. *Communautés syriaques en Iran et en Irak des origines à 1552*. London: Variorum Reprints, II].
- FINKBEINER U.  
 1992 Keramik der seleukidischen und parthischen Zeit aus den Grabungen in Uruk-Warka II. *Baghdader Mitteilungen* 23: 473–580.  
 1993 Uruk-Warka. Fundstellen der Keramik der Seleukiden- und Partherzeit. In U. Finkbeiner (ed.), *Materialien zur Archäologie der Seleukiden- und Partherzeit im südlichen Babylonien und im Golfgebiet*. Tübingen: Ernst Wasmuth Verlag: 3–16.
- FINSTER B.  
 1994 *Frühe iranische Moscheen vom Beginn des Islam bis zur Zeit salğuischer Herrschaft* (Archaeologische Mitteilungen aus Iran. Ergänzungsband, 19). Berlin: D. Reimer.
- FISHER J.W.  
 1995 Bone surface modifications in zooarchaeology. *Journal of Archaeological Method and Theory* 2/1: 7–68.
- FLEITMANN D. & MATTER A.  
 2009 The speleothem record of climate variability in Southern Arabia. *Comptes Rendus de l'Académie des Sciences - Geoscience* 341: 633–642.
- FRIFELT K.  
 2001 *Islamic Remains in Bahrain*. Moesgaard: Jutland Archaeological Society.
- GAJDA I.  
 2004 Ḥimyar en Arabie centrale – un nouveau document. *Arabia* 2: 87–98.
- GAZDAR M.S., POTTS D.T. & LIVINGSTONE A.  
 1984 Excavations at Thaj. *Atlat* 8: 55–108.

- GERBER Y.  
 2008 The Byzantine and early Islamic pottery from Jabal Hârûn (chapter 11). In Z.T. Fiema & J. Frösén (eds.), *Petra - The Mountain of Aaron. Volume I. The Church and the Chapel*. Helsinki: Societas Scientiarum Fennica: 287–329.
- [AL-]GHAZZI A.  
 1996 A preliminary report of an excavation at Hazem Agila in al-Kharj oasis/central region of Saudi Arabia. *Atlat* 14: 43–51.  
 2009 *Awân fukhâriyya min mawqa‘ Ḥazm ‘Aqila (muḥāfaḍat al-Ḥarj/Maṭṭaqat al-Riyādh)*. Riyadh: Dārat al-malik ‘Abd al-‘Azīz.  
 2010 *A Comparative Study of Pottery from a site in the al-Kharj Valley, Central Arabia*. (Series of archaeological refereed studies, 1). Riyadh: Saudi Commission for Tourism and Antiquities.  
 2011a *Mashrū‘ masaḥ w-tawthīq al-Manshāt al-ḥajariyya fī maḥīṭ ‘Aynī Farzān. Al-mujāllad al-awal. Dirāsāt maydāniyya muqārna li-l-muqābarā al-rakāmiyyat al-ḥajariyya*. Riyadh: Dārat al-malik ‘Abd al-‘Azīz.  
 2011b *Mashrū‘ masaḥ w-tawthīq al-Manshāt al-ḥajariyya fī maḥīṭ ‘Aynī Farzān. Al-mujāllad al-thānī. Qanāt al-rī fī Farzān ‘Aynī Farzān wa-fukhār-ha (Dirāsāt maydāniyya tawthīqiyya athāriyya muqārna)*. Riyadh: Dārat al-malik ‘Abd al-‘Azīz.
- GOLVIN L.  
 1988 Le *miḥrāb* et son éventuelle signification. In A. Papadopoulo (ed.), *Le Miḥrāb dans l’architecture et la religion musulmanes*. Leiden – New York: E. J. Brill: 53–55.
- GOODERS J.  
 1979 *Birds of Heath and Woodland: Spotted Sandgrouse*. London: Orbis Publishing. p. 2–11.
- GRAINGER D. (DIR.)  
 2007 *The geologic evolution of Saudi Arabia, a voyage through space and time*. Riyadh: Saudi Geological Survey.
- GRIGSON C.  
 1980 The craniology and the relationship of four species of *Bos*: 5. *Bos indicus* L. *Journal of Archaeological Science* 7: 3–32.
- GROOM N.  
 1983 *A Dictionary of Arabic Topography and Placenames*. Beirut – London: Librairie du Liban – Longman.
- HAERINCK E., PHILLIPS C.S., POTTS D.T. & STEVENS K.G.  
 1993 Ed-Dur, Umm al-Qaiwain (U.A.E.). In U. Finkbeiner (ed.) *Materialien zur Archäologie der Seleukiden-und Partherzeit im südlichen Babylonien und im Golfgebiet*. Tübingen: Ernst Wasmuth Verlag: 183–194.

- [AL-]HAMDĀNĪ, ABŪ MUḤAMMAD AL-ḤASAN B. AḤMAD B. YA'QŪB / ED. M. 'L-AKWA'.
- 1967 [Iklīl 2, text] = *Kitāb al-Iklīl, al-juz' al-thānī, li-Lisān al-Yaman Abī Muḥammad al-Ḥasan b. Aḥmad b. Ya'qūb al-Hamdānī*. Ed. Muḥammad b. 'Alī 'l-Akwa' al-Ḥiwālī (al-Maktaba al-yamaniyya, 3). Cairo: al-Sunna al-muḥammadiyya.
- [AL-]HAMDĀNĪ, ABŪ MUḤAMMAD AL-ḤASAN B. AḤMAD B. YA'QŪB / ED. D.H. MÜLLER.
- 1968 [Şifa, text] = *Şifat Jazīrat al-'Arab. Al-Hamdānī's Geographie der arabischen Halbinsel nach den Handschriften von Berlin, Constantinopel, London, Paris und Strassburg*. Ed. David Heinrich Müller. 2 vol. Leiden: E.J. Brill [First edition 1884–1891].
- HANNESSTAD L.
- 1983 *Ikaros 2. The Hellenistic pottery from Failaka, with a survey of Hellenistic pottery in the Near East* (Jutland Archaeological Society Publications, XVI/2). Aarhus.
- HANSEN D.P., OCHSENSCHLAGER E.L. & AL-RADI S.
- 2004 Excavations at Jujah, Shibam, Wadi Hadhramawt. *Arabian Archaeology and Epigraphy* 15: 43–67.
- HARRISON D.L. & BATES P.J.J.
- 1991 *The Mammals of Arabia*. Sevenoaks: Harrison Zoological Museum Publications.
- HASS H., LAGRO H.E. & STEINER M.L.
- 1992 Second and third seasons of excavations at Tell Abū Sarbut, Jordan Valley (preliminary report). *Annual of the Department of Antiquities of Jordan* 36: 333–339.
- HELMER D.
- 2000 Discrimination des genres *Ovis* et *Capra* à l'aide des prémolaires inférieures 3 et 4 et interprétation des âges d'abattage : l'exemple de Dikili Tash (Grèce). *Ibex, Journal of Mountain Ecology* 5: 29–38.
- HELMER D., GOURICHON L. & VILA E.
- 2007 The development of the exploitation of products from *Capra* and *Ovis* (meat, milk and fleece) from the PPNB to the Early Bronze in the northern Near East (8700 to 2000 BC cal.). *Anthropozoologica* 42/2: 41–69.
- HILBERT Y.H.
- 2012 *An investigation of Late Palaeolithic stone tools Assemblages from the Nejd Plateau, Southern Oman*. PhD dissertation, University of Birmingham.
- 2013 Khamseen rock shelter and the Late Palaeolithic-Neolithic transition in Dhofar. *Arabian Archaeology and Epigraphy* 24: 51–58.
- HILBERT Y.H., ROSE J.I. & ROBERTS R.G.
- 2012 Late Palaeolithic core-reduction strategies in Dhofar, Oman. *Proceedings of the Seminar for Arabian Studies* 42: 101–118.
- HILLENBRAND R.
- 1994 *Islamic Architecture. Form, Function and Meaning*. Edinburgh.

- HORWITZ L.K. & MONCHOT H.  
 2002 Choice cuts: hominid butchery activities at the Lower Paleolithic site of Holon, Israel. In H. Buitenhuis, A. M. Choyke, M. Mashkour & A. H. al-Shiyab (eds.), *Archaeozoology of the Near East V. Proceedings of the fifth international symposium on the archaeozoology of southwesern Asia and Adjacent areas*. Gröningen: ARC publication: 48-62.
- HORWITZ L.K. & ROSEN B.  
 2005 A review of camel milking in the Southern Levant. In J. Mulville & A. K. Outram (eds.), *The Zooarchaeology of Fats, Oils, Milk and Dairying, Proceedings of the 9th ICAZ Conference, Durham 2002*. Oxford: Oxbow Books: 121-131.
- HUBER CH.  
 1891 *Journal d'un voyage en Arabie (1883-1884). Publié par la Société asiatique et la Société de Géographie, avec Atlas*. Paris: Imprimerie nationale.
- HURST V.J. & KELLY A.R.  
 1961 Patination of cultural Flints. *Science* vol. 134, no. 3474: 251-256.
- HUTTERER R.  
 2008 *Paraechinus aethiopicus*. In IUCN 2012, *IUCN Red List of Threatened Species. Version 2012.2*. www.iucnredlist.org.
- IBN AL-KALBĪ, ABŪ 'L-MUNDHIR HISHĀM B. MUḤAMMAD B. AL-SĀ'IB / ED. N. ḤASAN  
 1988 [Nasab, text] = *Nasab Ma'add wa-'l-Yaman al-kabīr*. Ed. Nājī Ḥasan. Beirut: 'Ālam al-kutub – Maktabat al-Nahḍat.
- IBN BATTŪTA, ABŪ 'ABDALLĀH MUHAMMAD IBN 'ABDALLĀH AL-LAWĀTĪ AL-ṬĀNJĪ / ED. C. DEFREMERY & B.R. SANGUINETTI  
 1982 *Voyages. II. De La Mecque aux steppes russes et à l'Inde. Traduction de l'arabe de C. Defremery et B. R. Sanguinetti (1858). Introduction et notes de S. Yerasimos (Littérature et voyages)*. Paris: La Découverte – Poche.
- IBN KHAMĪS A.  
 1978 *Mu'jam al-Yamāma*. 2 vol. (al-Mu'jam al-jughrāfī li-l-mamlaka al-'arabiyya al-sa'ūdiyya). S. l.
- INIZAN M.-L. & ORTLIEB L.  
 1987 Préhistoire dans la région de Shabwa au Yémen du sud (R.D.P. Yémen). *Paléorient* 13/1: 522.
- [AL-]JĀSIR Ḥ.  
 1977 *al-Mu'jam al-jughrāfī li-l-bilād al-'arabiyya as-sa'ūdiyya*. 2 vol. (nuṣūṣ wa-abḥāth jughrāfiyya wa-ta'rīkhiyya 'an Jazīrat al-'Arab, 19). Riyadh: Dār al-Yamāma.



- JOMIER J.  
 2013 al-Fuṣṭāṭ. In P. Bearman, Th. Bianquis, C.E. Bosworth, E. van Donzel & W.P. Heinrichs (eds.), *Encyclopaedia of Islam, Second Edition*. Leiden: Brill Online [consulted on 04 October 2013].
- [AL-]JUHANY U.M.  
 2002 *Najd before the Salafi reform movement. Social, political, and religious conditions during the three centuries preceding the rise of the Saudi state*. Reading – Riyadh: Ithaca Press – King Abdul Aziz Foundation for Research and Archives.
- KENNET D.  
 2004 *Sasanian and Islamic pottery from Ras al-Khaimah: classification, chronology and analysis of trade in the Western Indian Ocean* (Society for Arabian Studies Monographs No. 1. BAR International Series, 1248). Oxford: Archaeopress.
- KERVAN M.  
 1977 Les niveaux islamiques du secteur oriental du t p  de l'Apadana. II Le mat riel c ramique. *Cahiers de la DAFI VII* : 75–161.
- KERVAN M., HIEBERT F. & ROUGEULLE A. (EDS.)  
 2006 *Qal'at al-Bahrain a trading and military outpost*. (Indicopleusto , Archaeologies of the Indian Ocean). Turnhout: Brepols.
- KHORD DHBEH, ABU'L-K SIM  UBAIDALLAH IBN  ABDALLAH IBN / ED. M.J. DE GOEJE  
 1889 *Kit b al-mas lik wa-l-mam lik. Auctore Abu 'l-K sim Obaidallah ibn Abdallah Ibn Khord dhbeh et excerpta e Kit b al-Khar dj auctore Kod ma ibn Dja'afar quae cum versione Gallica edidit, indicibus et glossario instruxit M.J. de Goeje*. Leiden: Brill.
- KHUSRAW, N SIR-I / ED. CH. SCHEFER  
 1881 *Relation du voyage de Nassiri Khosrau en Syrie, en Palestine, en  gypte, en Arabie et en Perse, pendant les ann es de l'h gire 437-444 (1035-1042), publi , traduit et annot  par Charles Schefer*. Paris: E. Leroux.
- KING G.R.D.  
 1986 *The historical mosques of Saudi Arabia*. London – New York: Longman.
- KISTER M.J.  
 1965 The campaign of  ulub n. A new light on the expedition of Abraha. *Le Mus on LXXVIII*: 425-436. [Reed. in M. J. Kister 1980. *Studies in J hiliyya and Early Islam*. London: Variorum Reprints, IV].
- KITCHEN  
 2000 *Documentation for Ancient Arabia, Part II. Bibliographical Catalogue of Texts*. Liverpool
- KLEINDIENST M.R.  
 2006 On Naming Things Behavioral Changes in the Later Middle to Earlier Late Pleistocene, Viewed From the Eastern Sahara. In E. Hovers & S. Kuhn (eds.)

*Transition before the Transition: Evolution and Stability in the Middle Paleolithic and Middle Stone Age.* New York: Springer: 13–28.

KURAN A.

1968 *The Mosque in early Ottoman Architecture*, Chicago: The University of Chicago Press.

LARCHER P.

2000 La Mu'allaqa de al-Ḥārith b. Ḥilliza : essai de traduction 'variationniste'. *Arabic and Middle Eastern Literatures* 3: 133–148.

LECKER M.

1989 *The banū Sulaym. A Contribution to the Study of Early Islam* (The Max Schloessinger Memorial Series, Monographs, IV). Jerusalem: The Hebrew University of Jerusalem.

LESBRE M.F.X.

1903 *Recherches anatomiques sur les camélidés.* (Archive du Musée d'Histoire Naturelle de Lyon, 8), Lyon.

LÉZINE A.-M., ROBERT C., CLEUZIQU S., INIZAN M.-L. ET ALII

2010 Climate change and human occupation in the Southern Arabian lowlands during the last deglaciation and the Holocene. *Global and Planetary Change* 72: 412–428.

LINFORD N.

2006 The application of geophysical methods to archaeological prospection. *Reports on Progress in Physics* 69/7: 2205–2257.

LOMBARD P.

1999 Le matériel funéraire du Dilmoun ancien. In P. Lombard (ed.) *Bahreïn. La civilisation des deux mers de Dilmoun à Tylos.* Paris: Institut du Monde Arabe: 56–71.

LYALL CH.J.

1906 Ibn al-Kalbī's account of the First Day of al-Kulāb. In C. Bezold (ed.) *Orientalische Studien Theodor Nöldeke zum siebzigsten Geburtstag (2. März 1906) gewidmet von Freunden und Schülern.* 1. Band. Gieszen: Verlag von Alfred Töpelmann: 127–154.

LYMAN R.L.

1987 Archaeofaunas and butchery studies: a taphonomic perspective. *Advances in Archaeological Method and Theory* 10: 249–337.

1994 *Vertebrate taphonomy.* Cambridge: Cambridge University Press.

2008 *Quantitative Paleozoology.* Cambridge: Cambridge University Press.

MA'SAL

1999 *Ma'sal. Maṭbū'a 'ilmiyya tu'nà bi-dirāsāt al-kitābāt al-'arabiyya al-qadīma fī jazīrat al-'Arab.* Riyadh: Lajnat dirāsāt al-kitābāt al-'arabiyya al-qadīma fī qism al-ātār wa-'l-matāḥif bi-Jāmi'at al-malik Sa'ūd.

- MABRY J. & PALUMBO G.  
 1988 The 1987 Wadi el-Yabis survey. *Annual of the Department of Antiquities of Jordan* 32: 275–305.
- MACDONALD K.C.  
 1992 The domestic chicken (*Gallus gallus*) in Sub-Saharan Africa: a background to its introduction and its osteological differentiation from indigenous fowls (Numidinae and *Francolinus* sp.). *Journal of Archaeological Science* 19: 303–318.
- MARKS A.E.  
 2008 Into Arabia, perhaps, but if so, from where? *Proceedings of the Seminar for Arabian Studies* 38: 15–24.
- MARKS A.E. & CONARD N.J.  
 2008 Technology vs. typology: The case for and against a transition from the MSA to the LSA at Mumba Cave, Tanzania. In T. Aubry, F. Almeida, A. C. Araujo & M. Tiffagom (eds.) *Typology vs. Technology. Proceedings of the XV UISPP World Congress in Lisbon September 4-9* (BAR International Series, S1831). Oxford: Archaeopress: 123–131.
- MARQUART J.  
 1901 *Ērānšahr nach der Geographie des Ps. Moses Xorenac'i, mit historisch-kritischem Kommentar und historischen und topographischen Excursen* (Abhandlungen der königlichen Gesellschaft der Wissenschaften zu Göttingen. Phil.-hist. Klasse, Neue Folge III, Nr. 2). Berlin: Weidmann.
- MARTIN L., MCCORRISTON J. & CRASSARD R.  
 2009 Early Arabian pastoralism at Manayzah in Wadi Sana, Hadramawt. *Proceedings of the Seminar for Arabian Studies* 39: 271–282.
- [AL-]MAS'UDĪ, 'ALĪ IBN AL-HUSAYN / ED. C. BARBIER DE MEYNARD C. & A. PAVET DE COURTEILLE  
 1861–1877 *Les prairies d'or [Murūj al-dhahab wa ma'ādin al-Jawhar], traduction française de [Charles-Adrien-Casimir] Barbier de Meynard et [Abel] Pavet de Courteille*. 9 vol. Paris: Imprimerie impériale.
- MASON R.B.  
 1997 Early Mediaeval Iraqī Lustre-painted and Associated Wares: Typology in a Multidisciplinary Study. *Iraq* LIX: 1–47.
- MASON R.B. & KEALL E.J.  
 1991 The 'Abbāsīd glaze ware of Sīrāf and Baṣra connection: petrographic analysis. *Iran* 29 : 51–66.
- MAWSŪ'AT ASMĀ' AL-AMĀKIN  
 2003 *Mawsū'at asmā' al-amākin fī 'l-mamlaka al-'arabiyya al-sa'ūdiyya*. 6 vol. Riyadh: Dārat al-malik 'Abd al-'Azīz – Hay'at al-masāḥa al-jiyūlūjiyya al-sa'ūdiyya.

McCLURE H.

- 1976 Radiocarbon chronology of Late Quaternary Lakes in the Arabian Desert. *Nature* 263: 755–756.
- 1978 Ar Rub' al Khali. In S. S. al-Sayari & J. G. Zötl (eds.) *Quaternary Period in Saudi Arabia. Vol. 1: sedimentological, hydrogeological, hydrochemical, geomorphological, and climatological investigations in central and eastern Saudi Arabia*. Wien: Springer Verlag.

McCORRISTON J.

- 2013 The Neolithic in Arabia: a view from the south. *Arabian Archaeology and Epigraphy* 24/1: 68–72.

McCORRISTON J., OCHES E.A., WALTER D.E. & COLE K.L.

- 2002 Holocene paleoecology and prehistory in highland southern Arabia. *Paléorient* 28/1: 61–88.

McCORRISTON J., STEIMER T., HARROWER M., WILLIAMS K. ET ALII

- 2011 Gazetteer of small-scale monuments in prehistoric Hadramawt, Yemen: a radiocarbon chronology from the RASA-AHSD Project research 1996–2008. *Arabian Archaeology and Epigraphy* 22: 1–22.

MEIGNEN L.

- 1995 Levallois lithic production systems in the Middle Paleolithic of the Near East: the case of the unidirectional method. In H.L. Dibble & O. Bar-Yosef (eds.) *The definition and interpretation of Levallois technology* (Monographs in World Archaeology, 23), Philadelphia: Prehistory Press: 361–379.

MEIGNEN L. & BAR-YOSEF O.

- 1988 Variabilité technologique au Proche Orient: l'exemple de Kebara. In L. Binford & J.-P. Rigaud (eds.) *L'Homme de Néandertal, vol. 4, La Technique*, Liege: ERAUL: 81–95.
- 1991 Les outillages lithiques moustériens de Kebara (fouilles 1982–1985) : premiers résultats. In O. Bar-Yosef & B. Vandermeersch (eds.) *Le squelette moustérien de Kebara 2*. Paris: Éditions du CNRS: 49–75.
- 2004 Réflexion sur la fin du Paléolithique moyen et les débuts du Paléolithique supérieur au Proche Orient. In P. Van Peer, P. Sémal & D. Bonjean (eds.) *Le Paléolithique moyen, Sessions générales et posters section 5, Actes du 16<sup>e</sup> Congrès UISPP, Université de Liège, Belgique, 2-8 septembre 2001*. Oxford: Archaeopress: 235–245.

MIGOWSKI C., STEIN M., PRASAD S., NEGENDANK J. ET ALII

- 2006 Holocene climate variability and cultural evolution in the Near East from the Dead Sea sedimentary record. *Quaternary Research* 66: 421–431.

MONCHOT H.

- 1996 La consommation du mouflon (*Ovis antiqua*, Pommerol 1879) au pléistocène moyen à la Caune de l'Arago (Tautavel, Pyrénées-Orientales). *Géologie Méditerranéenne* XXIII/2: 101–115.

- In press The faunal remains: preliminary results. In G. Charloux & R. Loreto (eds.), *Dūma II. Report of the Saudi-Italian-French Archaeological Project at Dūmat al-Jandal (Saudi Arabia)*. Riyadh: Saudi Commission for Tourism and Antiquities.
- MONCHOT H., BAILON S. & SCHIETTECATTE J.  
 2014 Archaeozoological evidence for traditional consumption of spiny-tailed lizard (*Uromastix aegyptia*) in Saudi Arabia. *Journal of Archaeological Science* 45 (May 2014): 96–102.
- MONCHOT H. & LÉCHELLE J.  
 2002 Statistical non parametric methods for the study of fossil populations. *Paleobiology* 28/1: 55–69.
- MOODY S.M.  
 1980 *Phylogenetic and Historical Biogeographical Relationships of the Genera in the Family Agamidae (Reptilia: Lacertilia)*. Ph.D. Dissertation. University of Michigan, Ann Arbor.
- MORONY M.G.  
 2002 The Late Sasanian Economic Impact on the Arabian Peninsula. *Nāme-ye Irān-e Bāstān* 1/2: 25-37.
- MOUTON M.  
 2008 *La péninsule d'Oman de la fin de l'Âge du fer au début de la période sassanide (250 av.-350 ap. J.-C.)* (BAR International Series, 1776, Society for Arabian Studies Monographs, 6). Oxford: Archaeopress.  
 2009 The settlement patterns of north-eastern and south-eastern Arabia in late antiquity. *Arabian Archaeology and Epigraphy* 20: 185–207.
- MOUTON M. & SCHIETTECATTE J.  
 2014 *In the desert margins. The settlement process in ancient South and East Arabia* (Arabia Antica, 9). Rome: L'Erma di Bretschneider.
- [AL-]MUGHANNAM A.S.  
 1988 Excavation of the Dhahran Burial Mounds, Fourth Season, 1986. *Atlat* 11: 9–28.  
 2000 A Preliminary Report on the Excavation of al-Uqair, north-west of Abu Zahmul in al-Ahsa Region. *Atlat* 15: 45-86 [engl.]; 55-95 [ar.]; pls. 12–26.
- MULDER-HEYMANS N.  
 2002 Archaeology, experimental archaeology and ethnoarchaeology on bread ovens in Syria. *Civilisations* 49: 197-221.
- MÜLLER W.W.  
 2010 *Sabäische Inschriften nach Ären datiert. Bibliographie, Texte und Glossar* (Akademie der Wissenschaften und der Literatur – Mainz, Veröffentlichungen der Orientalischen Kommission, 53). Wiesbaden: Harrassowitz.

- MUNRO N.D., BAR-OZ G. & STUTZ A.J.  
 2009 Aging mountain gazelle (*Gazella gazella*): refining methods of tooth eruption and wear and bone fusion. *Journal of Archaeological Science* 36: 752–763.
- MUNRO N.D., BAR-OZ G. & HILL A.C.  
 2011 An exploration of character traits and linear measurements for sexing mountain gazelle (*Gazella gazella*) skeletons. *Journal of Archaeological Science* 38: 1253–1265.
- MUNSCHY M., BOULANGER D., ULRICH P. & BOUIFLANE M.  
 2007 Magnetic mapping for the detection and characterization of UXO: Use of multi-sensor fluxgate 3-axis magnetometers and methods of interpretation. *Journal of Applied Geophysics* 61/3–4: 168–183.
- NABIGHIAN M.N., GRAUCH V.J.S., HANSEN R.O., LAFEHR T.R. ET ALII  
 2005 75th Anniversary: The historical development of the magnetic method in exploration. *Geophysics* 70/6: 33–61.
- NEHMÉ L., [AL-]TALHI D. & VILLENEUVE FR. (DIR.)  
 2010 *Report on the first excavation season at Mada'in Sâlih, 2008, Saudi Arabia*. Riyadh: SCTA.
- NORTHEGE A.  
 1997 Les origines de la céramique à glaçure polychrome dans le monde islamique. In G. Démians d'Archimbaud (dir.), *La céramique médiévale en Méditerranée. Actes du VI<sup>e</sup> congrès de l'AIECM2, Aix-en-Provence, 13-18 novembre 1995*. Aix en Provence : Narration édition: 213–223.
- NORTHEGE A. & FALKNER R.K.  
 1983 *Pottery from Samarra'. The surface survey and the Excavations at Qadisiyy 1983–89*. Unpublished report, 2 vol.
- OLSEN N., TØFFNER-CLAUSEN L., SABAKA T.J., BRAUER P. ET ALII  
 2003 Calibration of the Ørsted vector magnetometer. *Earth, Planets, and Space* 55: 11–18.
- OUESLATI T.  
 2008 Spatial fluctuation of food habits in byzantine Beirut (Bey 002, Bey 028, Bey 115), *Archaeozoology of the Near East VIII* (TMO 49). Lyon: Maison de l'Orient et de la Méditerranée: 629–640.
- PARKER A.G., GOUDIE A., STOKES S., WHITE K. ET ALII  
 2006a A record of Holocene climate change from lake geochemical analyses in southeastern Arabia. *Quaternary Research* 66: 465–476.
- PARKER A.G., PRESTON G., WALKINGTON H. & HODSON M.J.  
 2006b Developing a framework of Holocene climatic change and landscape archaeology for the lower Gulf region, Southeastern Arabia. *Arabian Archaeology and Epigraphy* 17: 125–130.

- PARKER A.G. & ROSE J.I.  
 2008 Climate change and human origins in southern Arabia. *Proceedings of the Seminar for Arabian Studies* 38 : 25–42.
- PAYNE S.  
 1973 Kill-off patterns in sheep and goats: the mandibles from Asvan Kale. *Anatolian Studies* 23: 281–303.
- PETERS J.  
 1989 Osteomorphological features of the appendicular skeleton of gazelles, genus *Gazella* Blainville 1816, Bohor Reedbuck, *Redunca redunca* (Pallas, 1767) and Bushbuck, *Tragelaphus scriptus* (Pallas, 1766). *Anatomia, Histologia, Embryologia* 18: 97–113.
- PETERS J., VAN NEER W. & PLUG I.  
 1997 *Comparative postcranial osteology of hartebeest (Alcelaphus buselaphus), Scimitar oryx (Oryx dammah) and Addax (Addax nasomaculatus), with notes on the osteometry of Gemsbok (Oryx gazella) and Arabian Oryx (Oryx leucoryx)* (Annales Sciences Zoologiques, vol. 280). Tervuren: Musée Royal de l’Afrique Centrale.
- PETRAGLIA M.D.  
 2003 The lower Paleolithic of the Arabian peninsula: occupation, adaptation and dispersal. *Journal of World Prehistory* 17/2: 141–179.  
 2005 Hominin responses to Pleistocene environmental change in Arabia and South Asia. In M. J. Head & P. L. Gibbard (eds.) *Early–Middle Pleistocene Transitions: The Land–Ocean Evidence* (Geological Society, Special Publications, 247). London: 305–319.
- PETRAGLIA M.D. & ALSHAREKH A.  
 2003 The Middle Paleolithic of Arabia: implications for modern human origins, behavior and dispersals. *Antiquity* 77: 671–684.
- PETRAGLIA M.D., ALSHAREKH A., BREEZE P., CLARKSON C. ET ALII  
 2012 Hominin dispersal into the Nefud desert and middle Palaeolithic settlement along the Jubba palaeolake, northern Arabia. *PLoS ONE* 7/11: e49840. doi:10.1371/journal.pone.0049840
- PETRAGLIA M.D., ALSHAREKH A.M., CRASSARD R., DRAKE N. ET ALII  
 2011 Middle Paleolithic occupation on a Marine Isotope Stage 5 lakeshore in the Nefud Desert, Saudi Arabia. *Quaternary Science Reviews* 30/13–14: 1555–1559.
- PETRAGLIA M.D. & ROSE J.I.  
 2009 *The Evolution of Human Populations in Arabia. Paleoenvironments, Prehistory and Genetics*. London: Springer Academic Publishers.
- PHILBY H. ST J.  
 1919 *Southern Nejd. Journey to Kharj, Aflaj, Sulaiyyil and Wadi Dawasir in 1918*. Cairo: The Arab Bureau.  
 1920 Southern Najd. *The Geographical Journal* 55/3–4: 161–185.

- 1921 *Heart of Arabia: a record of travel & exploration*. London: Constable and Company Ltd.
- 1949 Two notes from Central Arabia. *The Geographical Journal* 113: 86–93
- POTTS D.T.
- 1984 Northeastern Arabia in the Later Pre-Islamic Era. In R. Boucharlat & J.-Fr. Salles (eds.), *Arabie orientale, Mésopotamie et Iran méridionale de l'Âge du Fer au début de la période islamique*. Paris: ADFP: 85–144.
- 2001 Ostrich distribution and exploitation in the Arabian Peninsula. *Antiquity* 75: 182–190.
- POWERS R.W., RAMIREZ I.F., REDMOND C.D. & ELBERG F.L. JR.
- 1966 *Geology of the Arabian Peninsula: sedimentary geology of Saudi Arabia* (U.S. Geological survey Professional paper 560-D).
- PRESTON G. W. & PARKER A. G.
- 2013 Understanding the evolution of the Holocene Pluvial Phase and its impact on Neolithic populations in south-east Arabia. *Arabian Archaeology and Epigraphy* 24/1: 84–97.
- PREUSSER F.
- 2009 Chronology of the impact of Quaternary climate change on continental environments in the Arabian Peninsula. *Comptes Rendus de l'Académie des Sciences – Geoscience* 341: 1–12.
- PRIMDAHL F.
- 1979 The fluxgate magnetometer. *Journal of Physics E: Scientific Instruments* 12/4: 241–253.
- PRINGLE D.
- 1986 *The red tower. Settlement in the Plain of Sharon at the Time of the Crusaders and Mamluks A.D. 1099-1516* (British School of Archaeology in Jerusalem series no 1). London: British School of Archaeology in Jerusalem.
- PRUMMEL W. & FRISCH H.-H.
- 1986 A guide for distinction of species, sex and body size in bones of sheep and goat. *Journal of Archaeological Science* 13: 567–577.
- RABBAT N.
- 2013 Riwāk. In P. Bearman, Th. Bianquis, C.E. Bosworth, E. van Donzel & W.P. Heinrichs (eds.), *Encyclopaedia of Islam, Second Edition*. Leiden: Brill Online [consulted on 03 October 2013].
- [AL-]RASHID I.A.
- 1986 *Al-Rabadhah, a portrait of Early Islamic civilisation in Saudi Arabia*. London: Longman.
- RINGROSE T.J.
- 1993 Bone counts and statistics; a critique. *Journal of Archaeological Science* 20: 121–157.



ROBIN CH.J.

- 1996 Le Royaume Ḥijride, dit “royaume de Kinda”, entre Ḥimyar et Byzance. *Académie des Inscriptions et Belles-Lettres, Comptes rendus des séances de l'année 1996*: 665–714.
- 2008 Les Arabes des « Romains », des Perses et de Ḥimyar (III<sup>e</sup>-VI<sup>e</sup> s. è. chr.). *Semitica et Classica* 1: 167–202.
- 2012a Abraha et la reconquête de l'Arabie déserte : un réexamen de l'inscription Ryckmans 506 = Murayghān 1. *Jerusalem Studies on Arabic and Islam* 39: 1–93.
- 2012b Les rois de Kinda. In A. al-Helabi, D.G. Letsios, M. al-Moraekhi & A. al-Abduljabbar (eds.) *Arabia, Greece and Byzantium. Cultural Contacts in Ancient and Medieval Times*. Riyadh: King Saud University: 59–129.

ROBIN CH.J. & GAJDA I.

- 1994 L'inscription du wādī 'Abadān. *Raydān* 6: 113–137.

ROBIN CH.J. & PRIOLETTA A.

- 2013 Nouveaux arguments en faveur d'une identification de la cité de Gerrha avec le royaume de Hagar (Arabie orientale). *Semitica et Classica* 6: 131–185.

ROBIN CH.J. & ṬAYRĀN S.

- 2012 Soixante-dix ans avant l'Islam, l'Arabie toute entière dominée par un roi chrétien. *Académie des Inscriptions et Belles-Lettres, Comptes rendus de l'année 2012*: 525–553.

ROSE J.I.

- 2006 *Among Arabian Sands: Defining the Palaeolithic of Southern Arabia*. Ph.D. dissertation, Southern Methodist University, Dallas.

ROSE J.I. & BAILEY G.N.

- 2008 Defining the Palaeolithic of Arabia? Notes on the Roundtable Discussion. *Proceedings of the Seminar for Arabian Studies* 38: 65–70.

ROSE J.I. & PETRAGLIA M.

- 2009 Tracking the origin and evolution of human populations in Arabia. In M. Petraglia & J. Rose (eds.) *The Evolution of Human Populations in Arabia. Palaeoenvironments, Prehistory and Genetics*. London: Springer: 1–12.

ROSE J.I., USIK V.I., MARKS A.E., HILBERT Y.H. ET ALII

- 2011 The Nubian Complex of Dhofar, Oman: an African Middle Stone Age industry in Southern Arabia. *PLoS ONE* 6/11: e28239. doi:10.1371/journal.pone.0028239

ROSEN AYALON M.

- 1974 *La céramique islamique de Suse* (Mémoires de la Délégation archéologique Française en Iran). Paris : Geuthner.

ROSENTHAL F.

- 2013 La'ib. In P. Bearman, Th. Bianquis, C.E. Bosworth, E. van Donzel & W.P. Heinrichs (eds.), *Encyclopaedia of Islam, Second Edition*, Leiden: Brill Online [consulted on 02 October 2013].

- ROSEVEAR D.R.  
1974 *The carnivores of West Africa*. London: British Museum.
- ROSSLÄNDER R.  
1975 The formation of patina on flint. *Archaeometry* 17: 106–110.  
1978 *Schwierigkeiten bei der Datierung von Silices. Mineralische Rohstoffe als kulturhistorische Informationsquelle*. Hagen: Kennicke.
- ROUSSET M.-O. & MARCHAND S.  
2001 Secteur nord de Tebtynis (Fayyoum) Mission de 2000. *Annales Islamologiques* 35: 409–461.
- ROY K.K.  
2010 *Potential Theory in Applied Geophysics*, Berlin – Heidelberg: Springer.
- SALLES J.F. & LOMBARD P.  
1999 La céramique. In P. Lombard (ed.), *Bahrein. La civilisation des deux mers, de Dilmun à Tylos. Exposition présentée à l'Institut du Monde Arabe du 18 mai au 29 août 1999*, Paris – Gand : Institut du Monde Arabe – Snoeck-Ducaju & Zoon: 162–175.
- SANLAVILLE P.  
2000 *Le Moyen-Orient arabe, le milieu et l'homme*. Paris: Armand Colin.
- SASAKI T.  
1996 Umayyad and Abbasid finds from the 1994 excavations at Jazirat al-Hulayla. *Bulletin of Archaeology of the University of Kanazawa* 23: 179–222.
- SAUVAGET J.  
1947 *La mosquée omeyyade de Médine : étude sur les origines architecturales de la mosquée et de la basilique*. Paris: Vanoest.
- SAYYID ABDEL MONEM A.H.  
1988 Emendations to the Bir Murayghan Inscription Ry 506 and a new minor inscription from there. *Proceedings of the Seminar for Arabian Studies* 18: 131–143.
- SCHIETTECATTE J., [AL-]GHAZZI A., CHARLOUX G., CRASSARD R. ET ALII  
2013 The oasis of al-Kharj through time: first results of archaeological fieldwork in the province of Riyadh (Saudi Arabia). *Proceedings of the Seminar for Arabian Studies* 43: 285–308.
- SCHIETTECATTE J., CHABROL A., GANDREAU D., GAVAZZI B. ET ALII  
2012 *Second season of the Saudi-French mission in al-Yamāma, al-Kharj area (11 November – 18 December 2012)*. Unpublished preliminary report available on line: <http://halshs.archives-ouvertes.fr/halshs-00797003/>

SCHMID S.G.

- 2000 Die Feinkeramik der Nabatäer: Typologie, Chronologie und kulturhistorische Hintergründe. In S. G. Schmid & B. Kolb (eds.) *Petra. Ez Zantur II. Ergebnisse der Schweizerisch-Liechtensteinischen Ausgrabungen 1988-1992*. (Terra Archaeologica IV). Mainz: Philipp von Zabern: 1-199.

SCOTT-JACKSON J., SCOTT-JACKSON W., ROSE J.I. & JASIM S.

- 2008 Investigating Upper Pleistocene stone tools from Sharjah, UAE: Interim report. *Proceedings of the Seminar for Arabian Studies* 38: 43-54.

SEDOV A.V.

- 2007 The Cultural Quarter: Area F. In A. Avanzini (ed.) *A Port in Arabia between Rome and the Indian Ocean (3rd cent. BC - 5th cent. AD)*. *Khawr Rūrī Report 2*. (Arabia Antica 5). Rome: "L'Erma" di Bretschneider: 183-259.
- 2010 Les fouilles du secteur 6. In J.-Fr. Salles & A. V. Sedov (eds.), *Qāni'. Le port antique du Ḥaḍramawt entre le Méditerranée, l'Afrique et l'Inde. Fouilles russes 1972, 1985-1989, 1991, 1993-1994* (Indicopleustoi, Archaeologies of the Indian Ocean). Turnhout: Brepols: 183-281.

SIMÉON P. & LORETO R.

- Forthc. The pottery from Dûmat al-Jandal: Excavations levels (1 to 8) on the Qasr Marîd area.

SIMPSON ST J.

- 1998 'Where There's Smoke, There's Fire ...'. Pipe-smoking in the Ottoman Empire. *The British Museum Magazine* 31 (summer 1998): 14-17.
- 2009 The archaeology of the clay pipe in the Near East. *Al-Rafidān* XXX (2009): 1-9.

SITZIA L., BERTRAN P., BOULOGNE S., BRENET M. ET ALII

- 2012 The Paleoenvironment and Lithic Taphonomy of Shi'bat Dihya 1, a Middle Palaeolithic Site in Wadi Surdud, Yemen. *Geoarchaeology* 27: 471-491.

SMITH G.R.

- 2004 Al-Yamāma. In *Encyclopédie de l'Islam, nouvelle édition*. Vol. XI: 292-293.

SMITH I.

- 2005 The mammal, Bird, Reptile and Molluscs remains. In T. Insoll (ed.), *The Land of Enki in the Islamic Era. Pearls, Palms and Religious identity in Bahrain*. London - New York - Bahrain: Kegan Paul: 193-231.

SMUTS M.M.S. & BEZUIDENHOUT A.J.

- 1987 *Anatomy of the dromedary*. Oxford: Clarendon Press.

STEIGER C.

- 1990 *Vergleichend morphologische Untersuchungen an einzelknochen des postkranialen Skeletts des Altweltkamele*. PhD Dissertation. Ludwig-Maximilians-Universität, Munich.

- STINER M.C., KUHN S.L., WEINER S. & BAR-YOSEF O.  
 1995 Differential burning, recrystallization and fragmentation of archaeological bone. *Journal of Archaeological Science* 22: 223–237.
- STONE C.  
 1982 The camel bird of Arabia. *Saudi Aramco World* March/April 1982: 10–11.
- STUDER J.  
 2010 Preliminary Report on Faunal Remains. In L. Nehmé, D. al-Talhi & Fr. Villeneuve (ed.), *Unpublished report. Report on the Third Excavation Season (2010) of the Madâ'in Sâlih Archaeological Project* [Report on-line: <http://halshs.archives-ouvertes.fr/halshs-00542793>]: 285–293.  
 2011 Étude préliminaire des ossements analysés en 2011. In L. Nehmé (dir.), *Rapport sur la quatrième campagne (2011) de la mission archéologique de Madâ'in Sâlih* [unpublished report].
- STUDER J. & SCHNEIDER A.  
 2008 Camel use in the Petra Region, Jordan: 1st century AD. In E. Vila, L. Gourichon, A. M. Choyke & H. Buitenhuis (eds.), *Archaeozoology of the Near East VIII* (TMO 49). Lyon: Maison de l'Orient et de la Méditerranée: 581–596.
- SYNODICON ORIENTALE / ED. CHABOT J.-B.  
 1902 [Text and translation] = *Synodicon orientale ou Recueil de synodes nestoriens, publié, traduit et annoté par Jean-Baptiste Chabot* (Notices et extraits des manuscrits de la Bibliothèque nationale et autres bibliothèques, publiés par l'Académie des Inscriptions et Belles-Lettres, 37). Paris: Imprimerie nationale.
- AL-ṬABARĪ ABŪ JAʿFAR MUHAMMAD B. JARĪR / ED. DE GOEJE M.J.  
 1964 [Taʿrīkh, text] *Taʿrīkh al-rusul wa-l-mulūk, I : Annales quos scripsit Abu Djafar Mohammed Ibn Djarir at-Tabari, cum aliis edidit M.J. De Goeje, Prima series, ii, recensuerunt J. Barth et Th. Nöldeke*. Leiden: Brill.
- AL-ṬABARĪ ABŪ JAʿFAR MUHAMMAD B. JARĪR / ED. NOLDEKE TH.  
 1879 [Taʿrīkh, german translation] = *Geschichte der Perser und Araber zur Zeit der Sasaniden, aus der arabischen Chronik des Tabari, übersetzt und mit ausführlichen Erläuterungen und Ergänzungen versehen von Th. Noldeke* [Reed. Leiden: Brill, 1973].
- AL-ṬABARĪ ABŪ JAʿFAR MUHAMMAD B. JARĪR / ED. BOSWORTH C.E.  
 1999 [Taʿrīkh, engl. translation] = *The History of al-Ṭabarī, vol. V, The Sāsānids, the Byzantines, the Lak(h)mids, and Yemen, translated by C.E. Bosworth* (Bibliotheca persica). New York: State University of New York Press.
- TALHI D., IBRAHIM M., MURSI J.M. & ASKUBI KH.  
 1986 Exavation at Mabiyyat. Second Season. 1404-1405 / 1984-1985. *Atlal* 10: 58-63.

TAVO B VII 1

1987 *Tübinger Atlas des Vorderen Orients Teil B. Geschichte. VII. Die Ausbreitung des Islam bis zum ersten Kreuzzug (bis 1096) 1. Das islamische Arabien bis zum Tode des Propheten (632/11h) von Ulrich Rebstock.* Wiesbaden: Ludwig Reichert. 1987.

TCHERNOV E.

1994 *An early Neolithic village in the Jordan valley. Part II: the fauna of Netiv Hagdud.* (American Schools of Prehistoric Research Bulletin 44). Cambridge Mass.: Peabody Museum of Archaeology and Ethnology.

THALMANN J.-P.

1978 Tell 'Arqa (Akkar), campagne I-III, 1972-1974, chantier I, rapport préliminaire. *Syria* 55: 1-152.

THÉBAULT E., PURUCKER M., WHALER K.A., LANGLAIS B. ET ALII

2010 The Magnetic Field of the Earth's Lithosphere. *Space Science Reviews* 155/1-4: 95-127.

THILO U.

1958 *Die Ortsnamen in der altarabischen Poesie: Ein Beitrag zur vor- und frühislamischen Dichtung und zur historischen Topographie Nordarabiens* (Schriften der Max Freiherr von Oppenheim-Stiftung, 3). Wiesbaden: Harrassowitz.

THOULESS C.R., GRAINGER J.G., SHOBRACK M. & HABIBI K.

1991 Conservation status of gazelles in Saudi Arabia. *Biological Conservation* 58: 85-98.

[AL-]TIKRITI W.

2010 Heading North: An Ancient Caravan Route and the Impact of the Falaj System on the Iron Age Culture. In A. Avanzini (ed.) *Eastern Arabia in the First Millennium BC.* Rome: L'Erma di Bretschneider: 227-247.

TODISCO D. & MONCHOT H.

2008 Bone weathering in a periglacial context: the Tayara site (KbFk-7), Qikirtaq island, Nunavik (Canada). *Arctic* 61/1: 87-101.

TOMBER T.

2008 Appendix 2. Classical and Islamic pottery. In G. Barker, D. Gilbertson & D. Mattingly (eds.), *Archaeology and Desertification The Wadi Faynan Landscape Survey. Southern Jordan.* Oxford: Oxbow Books: 435-454.

TOSTEVIN G.B.

2011 Levels of Theory and Social Practice in the Reduction Sequence and *Chaîne Opératoire* Methods of Lithic Analysis. *PaleoAnthropology* 2011: 351-375 doi:10.4207/PA.2011.ART64.

- [AL-]‘UBŪDĪ M.  
 1979 *Bilād al-Qaṣīm (al-Mu‘jam al-jughrāfi li-l-Bilāl al-‘arabiyya al-sa‘ūdiyya)*. (Nuṣūṣ wa-abḥāth jughrāfiyya wa-ta’rīkhiyya ‘an Jazīrat al-‘Arab, 21). 6 vol. Riyadh: al-Yamāma.
- UERPMANN H.-P., POTTS D.T. & UERPMANN M.  
 2009 Holocene (re-)occupation of eastern Arabia. In M. Petraglia & J. Rose (eds.) *The Evolution of Human Populations in Arabia. Paleoenvironments, Prehistory and Genetics*. London: Springer: 205–214.
- UERPMANN M. & UERPMANN H.-P.  
 1997 Animal bones from excavation 519. In F. Højlund & H. Andersen (eds.), *Qala’at al-Bahreïn. The Central Monumental Buildings*. Moesgaard: Jutland Archaeological Society: 235–264.
- UERPMANN H.-P., UERPMANN M., KUTTERER A. & JASIM S.A.  
 2013 The Neolithic period in the Central Region of the Emirate of Sharjah (UAE). *Arabian Archaeology and Epigraphy* 24/1: 102–108.
- USIK V.I., ROSE J.I., HILBERT Y.H., VAN PEER P. ET AL.  
 2013 Nubian complex reduction strategies in Dhofar, southern Oman. *Quaternary International* 300: 244–266.
- VAN BEEK G.W., COLE G.H. & JAMME A.  
 1963 An archaeological reconnaissance in Hadramaut: a preliminary report. *Annual Report of the Smithsonian Institute* 1963: 521–545.
- VAN PEER P.  
 1992 *The Levallois Reduction Strategy* (Monographs in World Archaeology, 13), Madison: Prehistory Press.
- VAN PEER P., VERMEERSCH P. & PAULISSEN E.  
 2010 *Chert Quarrying, Lithic Technology and a Modern Human Burial at the Palaeolithic Site of Taramsa 1, Upper Egypt*. Leuven: Leuven University Press.
- VANDERHAAR J.M. & HWANG Y.T.  
 2003 *Mellivora capensis*. *Mammalian Species* 721: 1–8.
- VASLET D., [AL-]MUALLEM M.S., MADDAH S.S., BROSSE J.-M. ET AL.  
 1991 *Geologic Map of the Ar-Riyādh Quadrangle, Sheet 24 I, Kingdom of Saudi Arabia [1:250,000] & Explanatory Notes to the Geologic Map of the Ar-Riyādh Quadrangle, Sheet 24 I, Kingdom of Saudi Arabia*. Riyadh: Ministry of Petroleum and Mineral Resources.
- VERMEERSCH P., PAULISSEN E. & VAN PEER P.  
 1990 Palaeolithic chert exploitation in the limestone stretch of the Egyptian Nile Valley. *The African Archaeological Review* 8: 77–102.

- VIDAL F.S.  
1971 Al-Hufūf. In *Encyclopédie de l'Islam, deuxième édition*. Vol. III: 567–568.
- VINCENT P.  
2008 *Saudi Arabia: an environmental overview*, London – Leiden – New York: Taylor & Francis
- WAFI A.-M.  
1988 Les *mihrāb* et leurs ornements décoratives. In A. Papadopoulo (ed.), *Le Mihrāb dans l'architecture et la religion musulmanes*. Leiden – New York: Brill: 70–75.
- WAHIDA G., AL-TIKRITI W.Y. & BEECH M.  
2008 Barakah: a Middle Palaeolithic site in Abu Dhabi Emirate. *Proceedings of the Seminar for Arabian Studies* 38: 55–64.
- WENDORF F & SCHILD R.  
1974 *A Middle Stone Age Sequence from the Central Rift Valley, Ethiopia*. Warsaw: Polska Akademia Nauk.
- WHALEN N.M. & SCHATTEN K.E.  
1997 Pleistocene sites in southern Yemen. *Arabian Archaeology and Epigraphy* 8: 1–10.
- WHITCOMB D. & JOHNSON J.H.  
1982 *Quseir al-Qadim 1980: preliminary report*. (American Research center in Egypt, Preliminary reports, 7). Malibu: Undena Publications.
- WHITEHOUSE D.  
1968 Excavations at Siraf, Firth interim report. *Iran* 6: 1–22.  
1979 Islamic glazed pottery in Iraq and the Gulf: the ninth and tenth centuries. *Annali dell'Istituto Universitario Orientale di Napoli* 39: 45–61.
- WILMS T. & BÖHME W.  
2000 A new *Uromastyx* species from south-eastern Arabia, with comments on the taxonomy of *Uromastyx aegyptia* (Forskål, 1755). *Herpetozoa* 13/3–4: 133–148.  
2007 Review of the taxonomy of the spiny-tailed lizards of Arabia (Reptilia: Agamidae: *Lieilepidinae*: *Uromastyx*). *Fauna of Arabia* 23: 435–468.
- WILMS T., BÖHME W., WAGNER P., LUTZMANN N. & SCHMITZ A.  
2009 On the Phylogeny and Taxonomy of the Genus *Uromastyx* Merrem, 1820 (Reptilia: Squamata: Agamidae: Uromastycinae) – Resurrection of the Genus *Saara* Gray, 1845. *Bonner zoologische Beiträge* 56/1–2: 55–99.
- WILMS T., WAGNER P., SHOBRAK M., LUTZMANN N. & BÖHME W.  
2010 Aspects of the ecology of the Arabian spiny-tailed lizard (*Uromastyx aegyptia microlepis* Blanford, 1875) at Mahazat as-Sayd protected area, Saudi Arabia. *Salamandra* 46: 131–140.

WILSON J. & SA'D M.

- 1984 The Domestic material culture of Nabataean to Umayyad period Busrâ. *Berytus* 32: 35–147.

WÜSTENFELD F.

- 1874 *Bahrein und Jemâma. Nach arabischen Geographen beschrieben.* Göttingen: Dieterichschen Buchhandlung.

YĀQŪT SHIHĀB AL-DĪN ABĪ 'ABD ALLĀH B. 'ABDALLĀH AL-ĤAMAWĪ AL-RŪMĪ AL-BAGHDĀDĪ / ED. F. WÜSTENFELD  
1866–1873 [*Mu'jam*, text] = *Kitāb mu'jam al-buldān. Jacut's geographisches Wörterbuch, aus den Handschriften zu Berlin, St. Petersburg, Paris, London und Oxford, herausgegeben von Ferdinand Wüstenfeld.* 6. vol. (Deutsche Morgenländische Gesellschaft, in Commission bei F. A. Brockhaus). Leipzig: F.A. Brockhaus [Reed. 1924].

YELLEN J., BROOKS A., HELGREN D., TAPPEN M. *ET ALII*

- 2005 The archaeology of Aduma Middle Stone Age sites in the Awash Valley, Ethiopia. *Paleoanthropology* 10: 25–100.

YOM-TOV Y., MENDELSSHON H. & GROVES C.P.

- 1995 *Gazella dorcas.* *Mammalian Species* 491: 1–6.

[AL-]ZAHIRĀNĪ A., AL-MASHAIRI S., AL-NAFISA A., AL-YAHYA A. & AL-BASYUNI A.

- 2001 Preliminary Report on the Excavations of al-Ukhdoud, Najran. Second Season 1417 A.H. *Atlat* 16 (2001): 13–21 [engl.]/13–35 [ar.].

ZARINS J.

- 2001 *The Land of Incense: Archaeological work in the Governorate of Dhofar, Sultanate of Oman, 1990-1995.* Muscat: Sultan Qaboos University Publications.  
2013 Hailat Araka and the South Arabian Neolithic. *Arabian Archaeology and Epigraphy* 24/1: 109–117.

ZARINS J., IBRAHIM M., POTTS D.T. & EDENS CH.

- 1979 Saudi Arabian Archaeological Reconnaissance 1978. The preliminary report on the third phase of the Comprehensive Archaeological Survey Program – The Central Province. *Atlat* 3: 9–42.