



Application of the AIGA flash flood warning method to the 15th of June 2010 event on the Nartuby and Argens rivers (South of France)

Pierre Javelle, Dimitri Defrance, Yoann Aubert, Stéphanie Diss, Philippe Cantet, Mathieu Tolsa, Catherine Fouchier, Patrick Arnaud, Jacques Lavabre, Dominique Breil

► To cite this version:

Pierre Javelle, Dimitri Defrance, Yoann Aubert, Stéphanie Diss, Philippe Cantet, et al.. Application of the AIGA flash flood warning method to the 15th of June 2010 event on the Nartuby and Argens rivers (South of France). 2nd EGU Leonardo Topical Conference on the hydrological cycle “Looking at Catchments in Colors, Nov 2010, Luxembourg, Luxembourg. hal-01827432

HAL Id: hal-01827432

<https://hal.science/hal-01827432>

Submitted on 2 Jul 2018

HAL is a multi-disciplinary open access archive for the deposit and dissemination of scientific research documents, whether they are published or not. The documents may come from teaching and research institutions in France or abroad, or from public or private research centers.

L'archive ouverte pluridisciplinaire **HAL**, est destinée au dépôt et à la diffusion de documents scientifiques de niveau recherche, publiés ou non, émanant des établissements d'enseignement et de recherche français ou étrangers, des laboratoires publics ou privés.

Application of the AIGA flash flood warning method to the 15th of June 2010 event on the Nartuby and Argens rivers (South of France).

Pierre Javelle, Dimitri Defrance, Yoann Aubert, Stéphanie Diss, Philippe Cantet, Mathieu Tolsa, Catherine Fouchier, Patrick Arnaud, Jacques Lavabre, Dominique Breil

Cemagref Aix-en-Provence, hydrology research team - pierre.javelle@cemagref.fr

Flash flood forecasting at ungauged sites is one of the most difficult tasks in operational hydrology. The post-event analysis of catastrophic events offers the possibility to really appreciate the usefulness of warnings emitted during the crisis. This poster presents results obtained by the operational AIGA warning method during the dramatic 15th of June 2010 flood on the Nartuby and Argens rivers (South of France, 25 human losses).

> Description of the event

During the 15th and 16th of June 2010, an exceptional rainfall event occurred in South of France, with more than 300 mm recorded in 24 hours on a wide area. The downstream part of the Argens catchment was the most affected (Fig. 1a and 1b). Rainfall return periods were locally greater than 100-years (Fig. 1c).

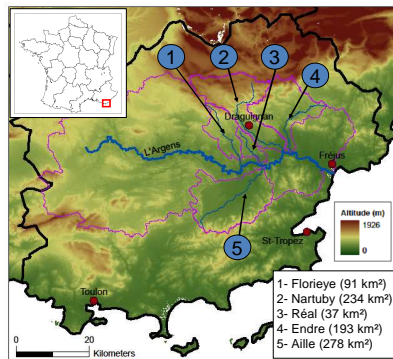


Fig. 1a: The Argens catchment (2 760 km²) and some of its sub-catchments

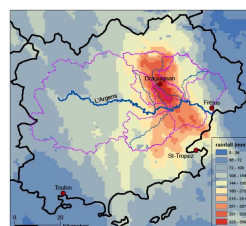


Fig. 1b: Total radar rainfall (uncorrected data)

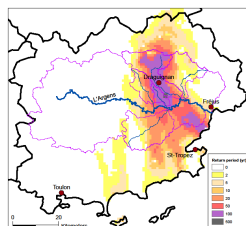


Fig. 1c: 6-h max. rainfall return period (calculated from uncorrected radar data)

> The AIGA method

The AIGA method (Fig. 2) combines rainfall radar measurements, a simple distributed hydrological model, and references quantiles (flood and rainfall). It provides in real time maps characterizing the ongoing situation according to its return period, and dedicated to operational services (Fig. 3).

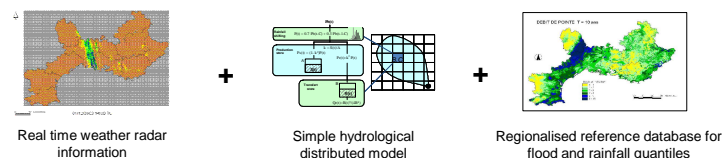


Fig. 2 : Description of the flood warning AIGA method (see Javelle et al. 2010 for more details concerning the model)

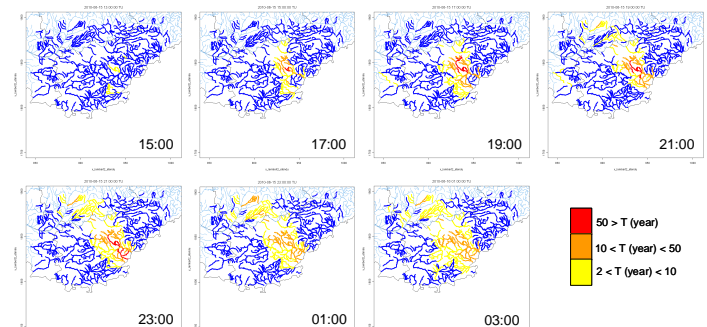


Fig. 3: AIGA rivers characterization during the 15th-16th of June event (loc. time)

> Comparison with observed damages

The method correctly identifies the rivers where the most damages were reported: Nartuby, Florieye, Réal, downstream Argens (Fig. 4). However, due to quick basins response, the anticipation is quite short: only half an hour between the "red" warning emitted at Trans-en-provence near Draguignan on the Nartuby river, and the entrance of the water into the village (Fig. 5).

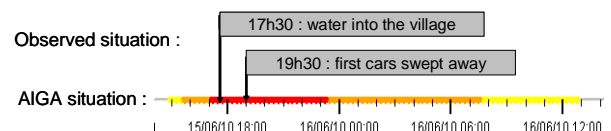


Fig. 5: Comparison between the AIGA warnings and the observed situation at the flooded village Trans-en-Provence on the Nartuby river (local time)

> Further investigations

An extensive post-event campaign coordinated by the French central flood forecast service (SCHAPI) was carried out in order to estimate peak discharges at different locations. This information will be compared with discharges calculated by the model. The same procedure must be applied to future events, in order to validate the method at ungauged locations.



Fig. 4 : Damages observed after the flood

EGU Leonardo Topical Conference on the hydrological cycle "Looking at Catchments in Colors", 10-12 November 2010, Luxembourg

Javelle, P., Fouchier, C., Arnaud, P., Lavabre, J., Flash flood warning at ungauged locations using radar rainfall and antecedent soil moisture estimations, Journal of Hydrology (2010), doi: 10.1016/j.jhydrol.2010.03.032

This work was supported by the Ecology, Energy, Sustainable Development and Sea French Ministry, Service Central d'Hydrométéorologie et d'Appui à la prévision des inondations (SCHAPI).
Météo-France is the co-author with the Cemagref of the AIGA method and is also acknowledged for having provided data used in this study.