



**HAL**  
open science

## **Detection of bacterial pathogens in clade E head lice collected from Niger's refugees in Algeria**

Meriem Louni, Nadia Amanzougaghene, Nassima Mana, Florence Fenollar, Didier Raoult, Idir Bitam, Oleg Mediannikov

### ► **To cite this version:**

Meriem Louni, Nadia Amanzougaghene, Nassima Mana, Florence Fenollar, Didier Raoult, et al.. Detection of bacterial pathogens in clade E head lice collected from Niger's refugees in Algeria. *Parasites & Vectors*, 2018, 11 (1), <10.1186/s13071-018-2930-5>. <hal-01826783>

**HAL Id: hal-01826783**

**<https://hal.science/hal-01826783v1>**

Submitted on 2 Jul 2018

**HAL** is a multi-disciplinary open access archive for the deposit and dissemination of scientific research documents, whether they are published or not. The documents may come from teaching and research institutions in France or abroad, or from public or private research centers.

L'archive ouverte pluridisciplinaire **HAL**, est destinée au dépôt et à la diffusion de documents scientifiques de niveau recherche, publiés ou non, émanant des établissements d'enseignement et de recherche français ou étrangers, des laboratoires publics ou privés.



HAL Authorization

RESEARCH

Open Access



# Detection of bacterial pathogens in clade E head lice collected from Niger's refugees in Algeria

Meriem Louni<sup>1,2</sup>, Nadia Amanzougaghene<sup>3</sup>, Nassima Mana<sup>4</sup>, Florence Fenollar<sup>2</sup>, Didier Raoult<sup>3</sup>, Idir Bitam<sup>2,4,5</sup> and Oleg Mediannikov<sup>3\*</sup>

## Abstract

**Background:** Head lice, *Pediculus humanus capitis*, are obligate blood-sucking parasites. Phylogenetically, they occur in five divergent mitochondrial clades (A, D, B, C and E), each having a particular geographical distribution. Recent studies have revealed that head lice, as is the case of body lice, can act as a vector for louse-borne diseases. Here, we aimed to study the genetic diversity of head lice collected from Niger's refugees (migrant population) arriving in Algeria, northern Africa, and to look for louse-borne pathogens. Comparative head lice samples collected from indigenous population of schoolchildren (non-immigrant) were also analyzed to frame the study.

**Results:** In this study, 37 head lice samples were collected from 31 Nigerien refugees, as well as 45 head lice from 27 schoolchildren. The collection was established in three localities of eastern Algiers, north Algeria. Quantitative real-time PCR screening of pathogens bacteria and the genetic characterisation of the head lice satut were performed. Through amplification and sequencing of the *cytb* gene, results showed that all head lice of Nigerien refugees 37/82 (45.12%) belonged to clade E with the presence of four new haplotypes, while, of the 45 head lice of schoolchildren, 34/82 lice (41.46%) belonged to clade A and 11/82 (13.41%) belonged to clade B. Our study is the first to report the existence of clade E haplogroup in Nigerien head lice. DNA of *Coxiella burnetii* was detected in 3/37 (8.10%) of the head lice collected from 3 of the 31 (9.67%) migrant population. We also revealed the presence of *Acinetobacter* DNA in 20/37 (54.05%) of head lice collected from 25/31 (80.64%) of the Nigerien refugees, and in 25/45 (55.55%) head lice collected from 15/27 (55.55%) schoolchildren. All positive Nigerien-head lice for *Acinetobacter* spp. were identified as *A. baumannii*, while positive schoolchildren-head lice were identified as *A. johnsonii* 15/25 (60%), *A. variabilis* 8/25 (32%) and *A. baumannii* 2/25 (8%).

**Conclusions:** Based on these findings from head lice collected on migrant and non-migrant population, our results show, for the first time, that head lice from Niger belong to haplogroup E, and confirm that the clade E had a west African distribution. We also detected, for the first time, the presence of *C. burnetii* and *A. baumannii* in these Nigerien head lice. Nevertheless, further studies are needed to determine whether the head lice can transmit these pathogenic bacteria from one person to another.

**Keywords:** *Pediculus humanus capitis*, Head lice, Niger's refugees, Scholchildren, Migrant population, Non-migrant population, *Coxiella burnetii*, *Acinetobacter* spp., Algeria

\* Correspondence: [olegus1@gmail.com](mailto:olegus1@gmail.com)

<sup>3</sup>IRD, AP-HM, MEPHI, IHU-Méditerranée Infection, Aix-Marseille Univ, Marseille, France

Full list of author information is available at the end of the article



## Background

Sucking lice (Phthiraptera: Anoplura) are permanent parasitic insects that infest mammals, including humans [1, 2]. Two recognized genera parasitize humans, *Pthirus* and *Pediculus*, both include one species in humans, *Pthirus pubis* and *Pediculus humanus* [2, 3]. The latter comprises two ecotypes, the head louse (*Pediculus humanus capitis*) and the body louse (*Pediculus humanus humanus*). They are obligate blood-feeding parasites that thrive exclusively on human blood [4, 5]. The two ecotypes have the same life-cycle; however, they occupy distinct ecological niches and have different feeding patterns: head lice live and multiply exclusively on the scalp, while body lice live and multiply in the clothes and feed on the human body [3, 4]. Contrary to body lice, that are mostly prevalent in people living in precarious conditions where cold and lack of hygiene are present, head lice are prevalent worldwide and preferentially infest schoolchildren, regardless of social class or level of hygiene. They can cause very intense pruritus that may lead to high irritation and even wound infections [6–8]. The head louse is most likely to have been associated with humans since our pre-hominid ancestors and has been dispersed throughout the world by human migration [2].

Molecular analysis of the mitochondrial genes *cytochrome b* (*cytb*) and *cytochrome c oxidase subunit 1* (*cox1*) allowed to infer a robust phylogeographical classification of *P. humanus* into five mitochondrial clades (A, D, B, C and E), each with a particular geographical distribution [9, 10]. Clade A and D include both head and body lice, in contrast to the other clades that include only head lice, therefore the head lice encompass all the diversity [9, 10]. Clade A is the most common and has a worldwide distribution, while clade D is only found in central Africa (Ethiopia and the Democratic Republic of the Congo) [11, 12]. Clade B is confined to America, Europe, Australia, north and south Africa and was most recently reported in head lice remains from Israel, dating from approximately 2000 years ago [9, 13]. Clade C is found in Ethiopia, the Democratic Republic of Congo and in Asia (Nepal and Thailand) [11, 13–15]. Lastly, clade E, a novel clade described in west Africa (Senegal and Mali) was previously described as a sub-clade of clade C [9, 10]. Recently, this latter was also reported, for the first time, in head lice from Bobigny, France [16].

Until recently, human body lice remained the only main vector of three life-threatening infectious diseases that have killed millions of people throughout the history of humanity namely: epidemic typhus, trench fever and relapsing fever, caused by *Rickettsia prowazekii*, *Bartonella quintana* and *Borrelia recurrentis*, respectively [17]. Natural and experimental observations show that body lice may also play a role in hosting and,

probably, transmitting the causative agent of plague, *Yersinia pestis*, during plague pandemics [18–20]. Although body lice are currently presumed to be harmful vectors of pathogens and to play a major role in all lice epidemics studied throughout human history, the status of head lice as a vector of louse-borne diseases is still under debate. Indeed, several studies report findings of body louse-borne pathogens in head lice belonging to different mitochondrial clades in different parts of the world [11, 12, 16, 21–25]. Several *Acinetobacter* species have also been detected in human head lice [11, 14, 16, 26, 27].

The emergence of humanitarian crises around the world, involving thousands of migrants, can represent an explosive risk factor in arthropod-borne disease epidemics. Indeed, several reports of louse-borne *B. recurrentis* have been from various European countries in refugee communities migrating from the Horn of Africa [28–32]. Thus, refugee populations generate a risk of the propagation of lice and their associated bacterial diseases [30]. Algeria continues to receive thousands of people from different countries, particularly from west Africa and mostly from Niger.

In this study, we aimed to assess the occurrence of bacterial pathogens associated with head lice collected from Niger's refugees arriving in Algeria, using molecular tools. The determination of the genetic status of the head lice was also performed. Besides, a comparative sample of head lice collected from local population (non-migrant) was submitted to the same examination in the order to frame the results obtained within the head lice of Nigerien refugees (migrant population).

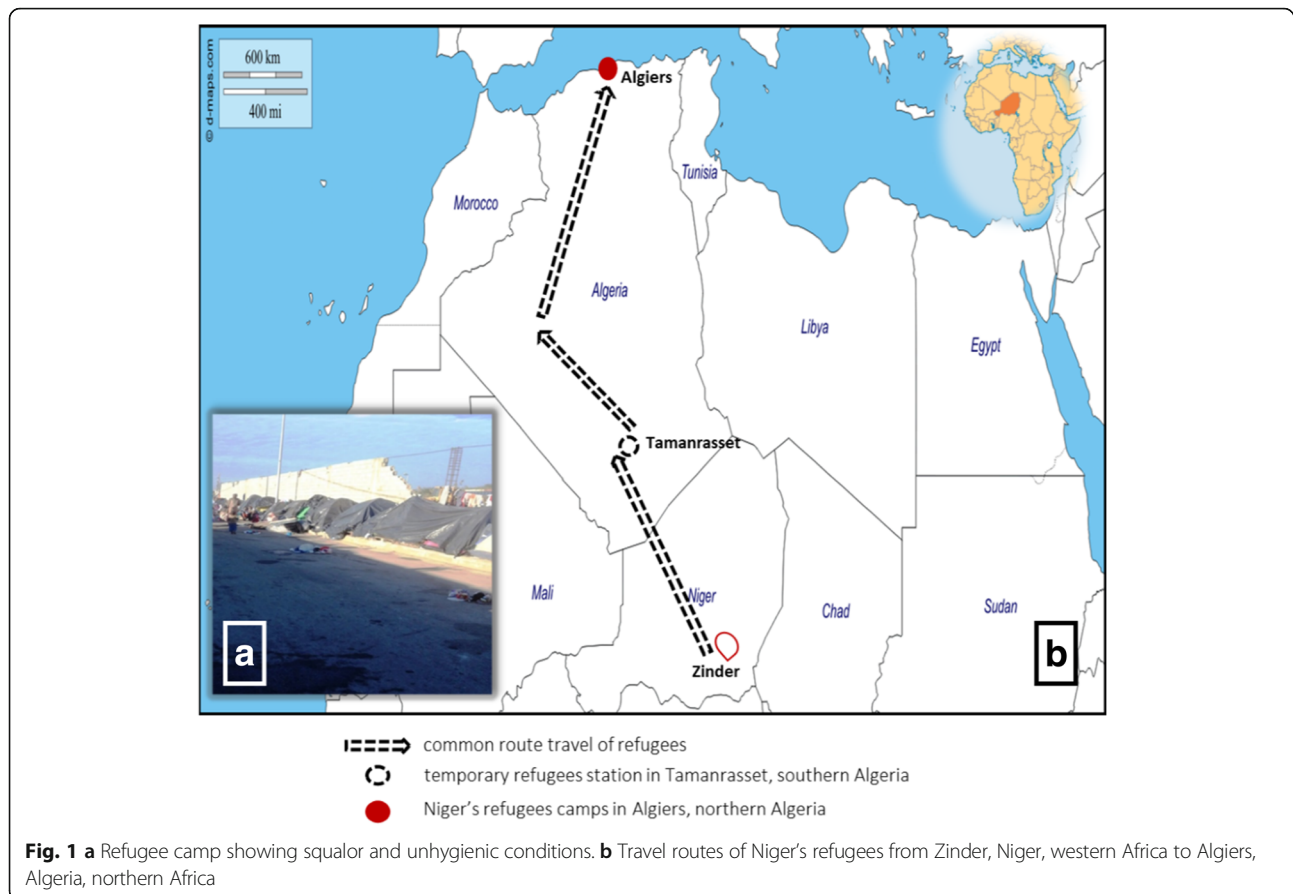
## Methods

### Louse sampling

In January 2016, an epidemiological investigation was established in the Bab Ezzouar Nigerien refugees camp (36°43'00"N, 3°11'00"E), East Algiers, Algeria. Most refugees came from Zinder, southern Niger, after stopping in Tamanrasset, located in the extreme south of Algeria (Fig. 1). All of the sampled individuals were examined for the presence of both head and body lice; however, no body lice were found during the examination. A total of 37 head lice were collected from 31 individuals.

Between November 2015 and May 2016, head lice were collected from schoolchildren in 5 elementary schools at 3 different location in eastern Algiers, north Algeria, including the regions of Bab Ezzouar, El Mohammadia (36°44'00"N, 3°08'00"E,) and Bordj el kiffan (36°45'00"N, 3°11'00"E), in order to have a comparative sample from the local population. A total of 45 head lice were collected from 27 schoolchildren (Fig. 2).

Visible lice were removed from scalps using clamps and were immediately frozen at -20 °C and then transported to the IHU Méditerranée-Infection, Marseille.



All head lice collected were then processed for molecular study.

#### DNA extraction

Prior to DNA isolation, the surface of each louse was decontaminated to avoid external contamination, as described previously [33]. Each louse specimen was cut in half length-ways. DNA was extracted from one half and the remaining halves of the lice were frozen at  $-20\text{ }^{\circ}\text{C}$  for subsequent studies. DNA was extracted using the QIAamp DNA tissue extraction kit (Qiagen, Hilden, Germany) on the BioRobot EZ1 (Qiagen, Courtaboeuf, France) following the manufacturer's instructions. DNA was eluted in  $100\text{ }\mu\text{l}$  of TE buffer and stored at  $-20\text{ }^{\circ}\text{C}$  until the next investigation.

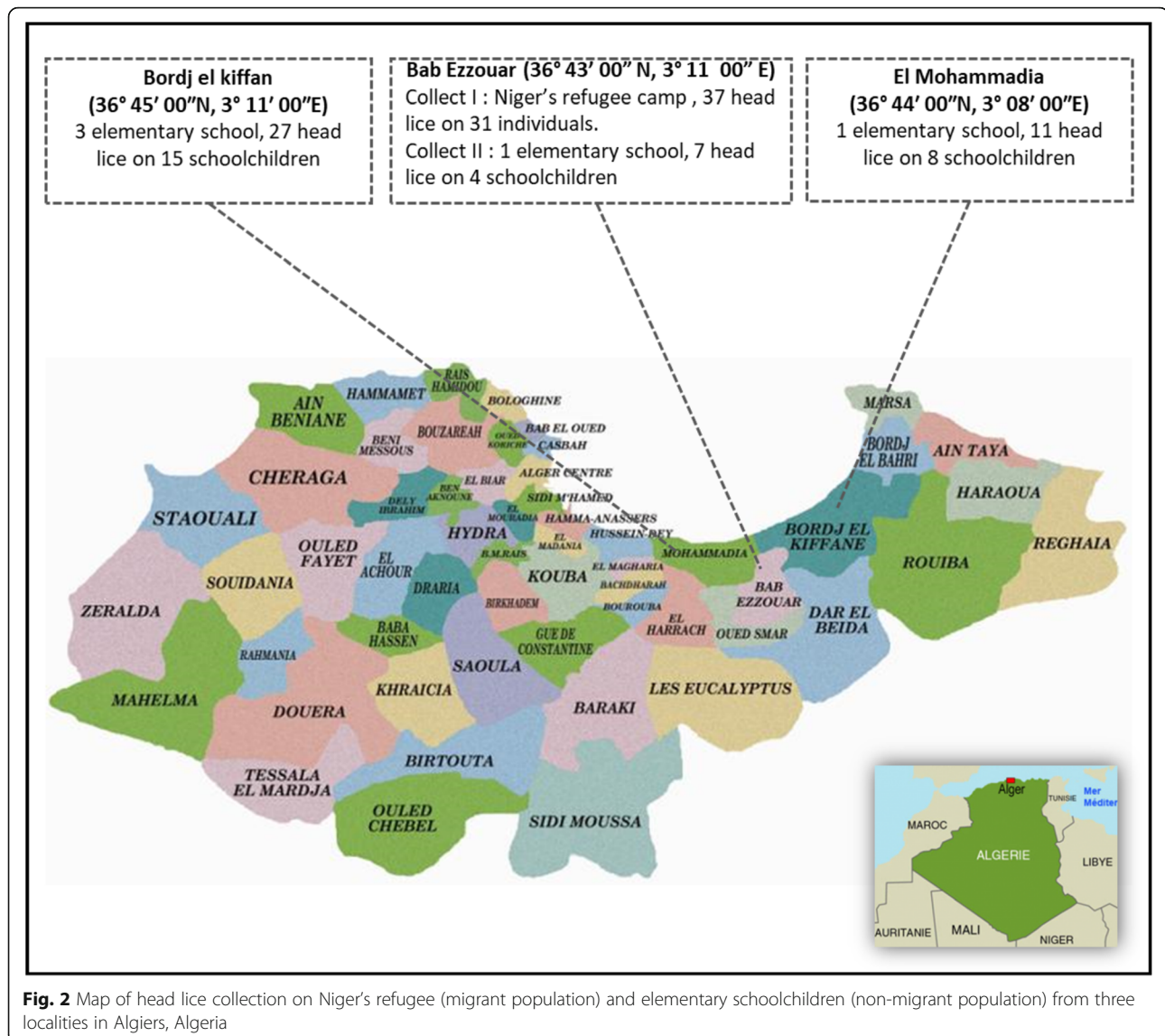
#### Genotypic status of lice

To identify the mitochondrial clades and to perform a phylogenetic study of the lice collected, all the DNA samples were subjected to standard PCR, targeting a 347 bp fragment of the *cytb* gene. The reaction of amplification was conducted in a final volume of  $50\text{ }\mu\text{l}$ , including  $25\text{ }\mu\text{l}$  Amplitaq gold master mix,  $1\text{ }\mu\text{l}$  of each primer,  $5\text{ }\mu\text{l}$  of DNA template, and water. The thermal cycling condition was as follows: an initial denaturation step at

$95\text{ }^{\circ}\text{C}$  for 15 min, followed by 40 cycles consisting of 1 min denaturation at  $95\text{ }^{\circ}\text{C}$ , 30 s annealing at  $55\text{ }^{\circ}\text{C}$  and a 1 min extension at  $72\text{ }^{\circ}\text{C}$ . A final extension cycle at  $72\text{ }^{\circ}\text{C}$  for 7 min was performed and the reactions were cooled at  $15\text{ }^{\circ}\text{C}$ . PCR amplification was performed in a Peltier PTC-200 model thermal cycler (MJ Research Inc., Watertown, MA, USA). Successful amplifications were confirmed via electrophoresis on 1.5% agarose gel. Purification of PCR products was performed using NucleoFast 96 PCR plates (Macherey Nagel EURL, Hoerd, France) following the manufacturer's instructions. The amplicons were sequenced using the Big Dye Terminator Cycle Sequencing Kit (Perkin Elmer Applied Biosystems, Foster City, CA) with an ABI automated sequencer (Applied Biosystems). The electropherograms obtained were then assembled and edited using ChromasPro software (ChromasPro 1.7, Technelysium Pty Ltd., Tewantin, Australia) and compared with those available in the GenBank database by NCBI BLAST (<http://blast.ncbi.nlm.nih.gov/Blast.cgi>).

#### Molecular screening for the presence of pathogens

The DNA of all head lice were subject to amplification by qPCR using primers and probes targeting different genes of *Rickettsia* spp., *Borrelia* spp., *B. quintana*, *Y.*



*pestis*, *Acinetobacter* spp., *C. burnetii* and *Anaplasma* spp., as previously reported (Table 1). All qPCRs were performed using a CFX96 Real-Time system (Bio-Rad, Marnes-la-Coquette, France) and the Eurogentec Master Mix Probe PCR kit (Eurogentec, Liège, Belgium). We included target bacterial DNA as the positive control and master mixtures as a negative control for each test. Samples were considered positive when the cycle threshold (Ct) was lower than 35 Ct. All *C. burnetii* positives samples were confirmed by a second specific qPCR targeting the IS30A spacer (Table 1).

In order to perform genotyping of *C. burnetii*, all positive samples were subjected to PCR amplification of the multi-spacer typing (MST), targeting four intergenic spacers (Cox2, Cox5, Cox18 and Cox22), as described previously [34]. To identify the species of the *Acinetobacter* bacteria, all samples tested positive by qPCRs for

*Acinetobacter* spp. were subjected to standard PCR targeting a 350 bp fragment of the *rpoB* gene (zone1) (Table 1). Negative and positive controls were included in each assay. Successful amplification was confirmed via gel electrophoresis and amplicons were prepared and sequenced using similar methods as described for the *cytb* gene for lice above.

#### Data analysis

The head lice nucleotide sequences obtained in this study were combined with the *cytb* database, comprising haplotypes that span different geographical location in the five continents, as previously reported [9]. MEGA 6.06 was used for the phylogenetic analyses under the Kimura 2-parameter model with 500 replicates, as described previously [35]. All obtained

**Table 1** Oligonucleotide sequences of primers and probes used for real-time PCRs and conventional PCRs in this study

Target	Name	Primers (5'-3') and probes	Source
<i>Pediculus humanus cytochrome b</i>	<i>Cytb</i>	F_GAGCGACTGTAATTACTAATC R_CAACAAAATTATCCGGGTCC	[53]
<i>Acinetobacter</i> spp. RNA polymerase $\beta$ subunit gene	<i>rpoB</i>	F_TACTCATATACCGAAAAGAACGG R_GGYTTACCAAGRCTATACTCAAC FAM-CGCGAAGATATCGGTCTSCAAGC-TAMRA	[51]
	<i>rpoB</i> (zone1)	F_TAYCGYAAAGAYTTGAAAGAAG R_CMACACCYTTGTMCCRTGA	[54]
<i>Rickettsia</i> spp. citrate synthase ( <i>gltA</i> )	RKND03	F_AATGCTCTTGACGCTGGTCT R_TCGAGTGCTAATATTTTGAAGCA FAM-CGGTGGTGAATGCTGCGTTACAACA-TAMRA	[55]
<i>Yersinia pestis</i> plasminogen activator gene	PLA	F_ATGGAGCTTATACCGAAAC R_GCGATACTGGCCTGCAAG FAM-TCCCGAAAGGAGTGC GGTAATAGG-TAMRA	[56]
<i>Borrelia</i> spp. 16S ribosomal RNA	Bor16S	F_AGCCTTTAAAGCTTCGCTTGAG R_GCCTCCCGTAGGAGTCTGG FAM-CCGGCCTGAGAGGGTGAACGG-TAMRA	[57]
<i>Bartonella quintana</i> Hypothetical intracellular effector 3-oxoacyl-synthase gene	<i>yopP</i>	F_TAAACCTCGGGGAAGCAGA R_TTTCGTCCTCAACCCATCA FAM-CGTTGCCGACAAGACGTCCTTG-TAMRA	[58]
	<i>fabF3</i>	F_GCGGCCTTGCTCTTGATGA R_GCTACTCTGCGTCCTTGGA FAM-TGCAGCAGGTGGAGAGAACGTG-TAMRA	
<i>Anaplasma</i> spp. 23S ribosomal RNA	<i>TtAna</i>	F_TGACAGCGTACCTTTGCAT R_TGGAGGACCGAACCTGTTAC FAM-GGATTAGACCCGAAACCAAG-TAMRA	[59]
<i>Coxiella burnetii</i> Spacers	IS1111	F_CAAGAAACGTATCGCTGTGGC R_CACAGAGCCACCGTATGAATC FAM-CCGAGTTCGAAACAATGAGGGCTG-TAMRA	[42]
	IS30A	F_CGCTGACCTACAGAAATATGTCC R_GGGGTAAGTAAATAATACCTTCTGG FAM-CATGAAGCGATTTATCAATACGTGTATGC-TAMRA	
	Cox2	F_CAACCCTGAATACCCAAGGA R_GAAGCTTCTGATAGGCGGGA	[34]
	Cox5	F_CAGGAGCAAGCTTGAATGCG R_TGGTATGACAACCCGTCATG	
	Cox18	F_CGCAGACGAATTAGCCAATC R_TTCGATGATCCGATGGCCTT	
	Cox22	F_GGGAATAAGAGAGTTAGCTCA R_CGCAAATTCGGCACAGACC	

sequences of *Acinetobacter* species and *C. burnetii* were analyzed using BLAST ([www.ncbi.nlm.nih.gov/blast/Blast.cgi](http://www.ncbi.nlm.nih.gov/blast/Blast.cgi)) and compared to sequences in the GenBank database. Phylogenetic analyses using similar methods,

as described above, were used to determine the position of *Acinetobacter* species identified in head lice of the two population compared to another *Acinetobacter* available in the GenBank database.

## Results

### Lice clade and phylogenetic analysis

Regarding the migrant population, we examined, in total, fifty female ( $\geq 24$  years-old) and twenty child refugees ( $\leq 5$  years-old). Twenty-eight of the fifty women (56%) and three of the 20 (15%) children were infested with head lice and were included in this study. Thirty-seven head lice were collected from 31 individuals refugees from the Nigerien refugee camp located in eastern Algiers, Algeria.

Forty-five head lice specimens were collected from the non-migrant population. The sampling was performed in 5 elementary schools at 3 different locations in east Algiers, north Algeria. Of the 101 schoolchildren examined, 27 (26.73%) were infested by head lice and the totality were female aged between 6–11 years-old. The highest infestation rate was recorded in the Bordj El kiffan region with a rate of 48.14% (13/27), followed by the Bab Ezzouar and El Mohammadia regions, with a rate of 33.33% (9/27) and 18.51% (5/27), respectively.

In total, 82 head lice samples were collected from Nigerien refugees and schoolchildren in eastern Algiers, and were then analyzed using PCR standard targeting the *cytb* gene to determine their clade. Results showed that all head lice of the migrant population (37/82, 45.12%) were clade E, and defined the presence of four different new haplotypes referred here as E52, E53, E54 and E55 (26/37, 70.27%) lice belonged to haplotype E52 (5/37, 13.51%) to haplotype E53 (4/37, 10.81%) to haplotype E54 and (2/37, 5.40%) to haplotype E55. While the head lice of the non-migrant population were clade A and B, the analysis of the 45 *cytb* sequences yielded 34/82 lice (42.68%) belonged to the worldwide haplotype A5 within the clade A and 11/82 (13.41%) belonged to the B36 haplotype, the most widespread and prevalent within the B haplogroup (Table 2). These haplotypes, together with references from all the head lice and haplogroups, were used to construct a maximum likelihood (ML) phylogenetic tree (Fig. 3).

### Molecular detection of bacterial pathogens

In this study, the qPCR investigation of all lice samples for *Rickettsia* spp., *Borrelia* spp., *Y. pestis*, *B. quintana* and *Anaplasma* spp. produced no positive results. However, positive results were obtained when testing for the presence of *C. burnetii* and *Acinetobacter* spp.

The DNA of *C. burnetii* was detected in 3 out of 37 (8.10%) of head lice of Nigerien refugees collected from 3 of the 28 (10.71%) infested women but not reported in head lice of schoolchildren. The positive lice for *C. burnetii* belonged to haplotypes E52 and E54 (Fig. 3) (Table 2). These results were confirmed by targeting two *C. burnetii*-specific genes using qPCR, supplemented by PCR-sequencing of one spacer for the

genotyping of *C. burnetii*. We only succeeded in obtaining sequences for the Cox22 spacer, probably due to the low concentration of *C. burnetii* DNA in these head lice samples. Obtained sequences did not allow to identify the *C. burnetii* genotype, but it corresponds to one of the eight possible MST genotypes of *C. burnetii*: 8, 9, 10, 38, 43, 48, 50 and 53. Negative controls remained negative in all PCR experiments.

The DNA of *Acinetobacter* spp. was detected in 20 out of 37 (54.05%) head lice collected from 25 out of 31 (80.64%) Nigerien refugees and in 40 out of 45 (88.88%) head lice collected from 15 out of 27 (55.55%) schoolchildren targeting the *rpoB* gene using qPCR. As for the molecular identification of the *Acinetobacter* species, we succeeded in amplifying a 350 bp fragment of the *rpoB* (zone1) gene in all head lice positive in qPCR collected from the two populations (migrant and non-migrant). Based on a BLAST search, the comparison of the nucleotide sequences with the GenBank database sequences revealed the existence of one species of *Acinetobacter* for the head lice of Niger's refugees sharing 99–100% identity with their corresponding references and identified as *A. baumannii*. All lice belonged to the four haplotypes of clade E found in this study (Fig. 3) (Table 2). DNA of *Acinetobacter* spp. of head lice collected from schoolchildren were identified: 24/40 (60%) positive-head lice as *A. johnsonii*, 12/40 (30%) sequences as *A. variabilis* and 4/40 (10%) sequences as *A. baumannii*, sharing 99–100% identity with their corresponding references and all belonged to the two haplogroup A and B (Fig. 4).

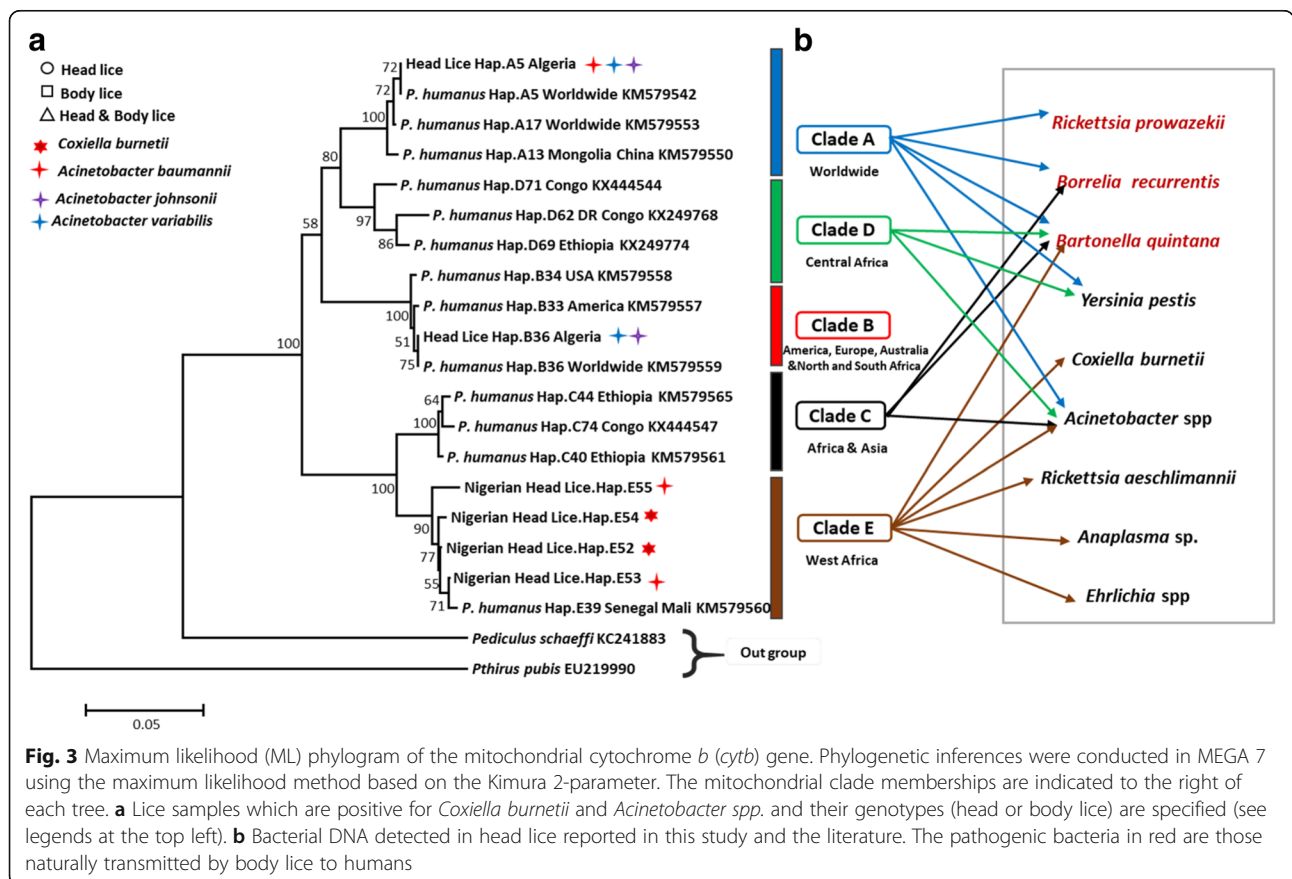
## Discussion

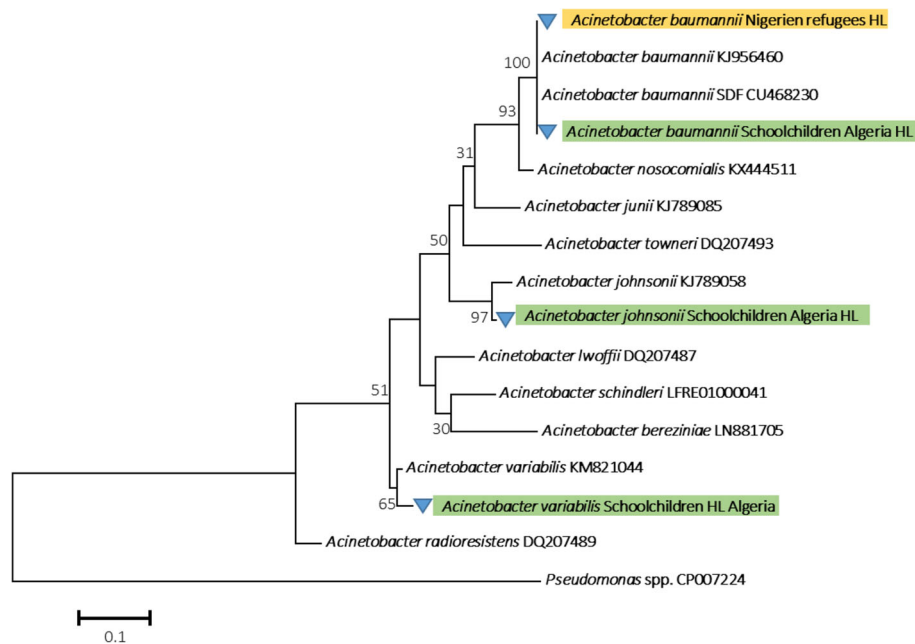
In recent years, several countries around the world and particularly those in the Horn of Africa, have endured humanitarian crisis conditions, including civil wars. The European Union has received thousands of refugees and migrants, representing a risk factor for possible outbreaks of arthropod-borne diseases. The current refugee crisis in Europe has been characterized by the rapid emergence of several cases of louse-borne relapsing fever caused by *B. recurrentis* which were diagnosed in the Netherlands, Germany, southern and northern Italy, Belgium, Switzerland and Finland [28–32].

Algeria is one of the countries in north Africa that has also received thousands of refugees and migrants from different countries, including Syria, Libya, Mali and Niger. An epidemiological survey was therefore established in Algiers at a camp of Nigerien refugees that housed more than a hundred individuals crowded together surviving in precarious conditions. These refugees have traveled thousands kilometers to reach their target country, providing thus an ideal environment for the spread of lice and the pathogens that they might carry.

**Table 2** Detection of head lice clades and pathogens in the Nigerien refugees (migrant population) and schoolchildren (non-migrant population) in eastern Algiers, Algeria

Location	Population	No. lice tested (%)	Clade of lice (no.) %	Haplotype (no.) %	Pathogen (no.) %
Bab Ezzouar	Nigerien refugees	37 (45.12)	E (37/37) 100	E52: (26/37) 70.27	<i>Coxiella burnetii</i> (3/37) 8.10
				E53: (5/37) 13.51	<i>Acinetobacter baumannii</i> (20/37) 54.05
				E54: (4/37) 10.81	
				E55: (2/37) 5.40	
El Mohammadia	Schoolchildren	7 (8.53)	A (3/7) 42.85	A5 (3/7) 42.85	<i>Acinetobacter johnsonii</i> (11/45) 24.44
			B (4/7) 57.14	B36 (4/7) 57.14	<i>Acinetobacter variabilis</i> (3/45) 6.66
Bordj El kiffan	Schoolchildren	27 (32.92)	A (20/27) 74.07	A5 (20/27) 74.07	<i>Acinetobacter johnsonii</i> (6/45) 13.33
			B (7/27) 25.92	B36 (7/27) 25.92	<i>Acinetobacter variabilis</i> (2/45) 4.44
Total	2	82 (100)	A (34/82) 41.46	E52: (26/37) 70.27	<i>Coxiella burnetii</i> (3/82) 3.65
			B (11/82) 13.41	E53: (5/37) 13.51	<i>Acinetobacter baumannii</i> (29/82) 35.36
			E (37/82) 45.12	E54: (4/37) 10.81	<i>Acinetobacter johnsonii</i> (24/82) 29.26
				E55: (2/37) 5.40	<i>Acinetobacter variabilis</i> (12/82) 14.63
				A5 (34/82) 41.46	
			B36 (11/82) 13.41		





**Fig. 4** Phylogenetic tree highlighting the position of the *Acinetobacter* species identified in head lice of Nigerien refugees and schoolchildren compared to another *Acinetobacter* available in the GenBank database. Phylogenetic inferences were conducted in MEGA 7 using the maximum likelihood method based on the Kimura 2-parameter model for nucleotide sequences. Statistical support for internal branches of the tree was evaluated by bootstrapping with 500 iterations

Our study is the first to assess the genetic diversity as well as the occurrence of bacterial pathogens from head lice collected in camp of Nigerien refugees arriving from Zinder in Algeria, northern Africa. In this work, the pediculosis patients were female, 90.32% (28/31) were adult and 9.67% (3/31) were girls. As mentioned earlier, we performed the same analysis for head lice specimens collected from schoolchildren of local population in the order to have comparative sample to frame the results obtained in this study.

The mitochondrial DNA analysis of the 37 head lice of the migrant population, and the 45 head lice of the non-migrant population, showed the presence of three major haplogroups: A, B and E. All Niger's refugees head lice tested (37/82) belonged to clade E, including four different new haplotypes characterized in this study: haplotype E52 was the most prevalent (70.27%), followed by haplotype E53 (13.51%), haplotype E54 (10.81%) and, finally, haplotype E55 (5.40%) (Table 2). Previous studies have already reported that clade E is limited to west African countries, namely Senegal and Mali [9]. It was then recently reported, for the first time, in head lice from Bobigny (France), also sampled from families originating from west African countries [16]. The remaining head lice samples collected from schoolchildren in eastern Algiers, belonged to the worldwide haplotype A5 (34/82, 42.68%) and the most widespread haplotype B6 (11/82, 13.41%), within the

clade A and B, respectively. These data confirm the existence of clade A and B in Algeria, as reported by previous studies [36, 37, 27].

This is the first report of clade E among head lice of refugees coming from Niger, west Africa, to Algeria, assuming that the head-lice infestation occurred in their country of origin, and that clade E may be a vector for human pathogens. These results are not surprising, as expected, they confirm that clade E has a west African distribution, as reported by previous studies [9, 16].

To date, human lice infestation remains a global public health and social problem [38]. Although body lice are assumed to be the main vectors of pathogens, the epidemiological status of head lice as a vector of louse-borne diseases is still misunderstood. Even though, it has been demonstrated that the immune reactions of head lice to different pathogens are stronger than those of the body louse, which may enable it to carry a large spectrum of pathogens [39, 40]. In natural settings, head lice belonging to different mitochondrial clades sampled from several countries have been found to carry the DNA of several pathogen bacteria including *B. quintana*, *B. recurrentis*, *B. theileri*, *Acinetobacter* spp. and *Y. pestis*, as well as the DNA of *C. burnetii*, *R. aeschlimannii* and two potential new species of the genera *Anaplasma* and *Ehrlichia*, of unknown pathogenicity [11, 14, 16, 19, 21–27]. Experimental studies have demonstrated that head lice may also act as a vector for louse-borne diseases [33, 41].

*Coxiella burnetii*, the causative agent of Q fever, is a highly infectious zoonotic intracellular bacterium. It is found worldwide and has a diverse wide range of hosts including mammals, birds, reptiles and arthropods, mainly ticks [42]. The infection is generally transmitted to humans through direct contact (milk, urine, feces or semen from infected animals) as well as through aerosol inhalation. It can be acute or chronic, exhibiting a wide range of clinical manifestations [42]. Q fever has been reported throughout the African continent with a higher prevalence in western Africa, including several countries such as Nigeria, Senegal, Ghana, Republic of Côte d'Ivoire, Burkina Faso and Niger, representing a significant public health threat [43]. In Niger, only one serological study has so far been carried out on humans, in Niamey, where 10% (17/177) of children aged between one month and five years-old were found to be seropositive for the *C. burnetii* infection [44]. Another study was conducted on the prevalence of *C. burnetii* in animals of the Maradi Region of Niger and showed that 32% (24/75) of goats that had experienced abortions were seropositive, compared to 29% (12/75) of non-randomly selected goats without a history of abortion [45].

We found 8.10% of 37 head lice infected by *C. burnetii* collected from three of 28 persons. This bacterium was not reported in head lice sampled from the non-migrant population. *Coxiella burnetii* was recently reported in 1% of 600 head lice belonging to clade E infesting 5% of 117 individuals from Mali [21]. In contrast, the presence of this bacterium was also investigated in Ethiopia on head and body lice, and results showed no evidence of *C. burnetii* in any of the specimens tested [46]. A field study in East Africa, showed that lice collected from individuals, living in a place where an epidemic of Q fever had occurred three months previously, could be spontaneously infected with *C. burnetii* [47]. Another study also showed that, under experimental conditions, it is possible to infect body lice with *C. burnetii*, although human lice are not a known vector of this bacterium [48]. The presence of *C. burnetii* has never been reported in head lice belonging to the other clades; however, it has been recently reported for the first time in 10/524 (1.90%) body lice belonging to clade A collected from 2/19 (10.52%) homeless people in northern Algeria [49]. Based on our results and data from the literature, the role of human lice in the epidemiology of the *C. burnetii* infection should be further investigated.

This study also reveals the presence of *A. baumannii* DNA in Nigerien refugees head lice, and the presence of *A. johnsonii* and *A. variabilis* in addition to *A. baumannii* in head lice sampled from schoolchildren in eastern Algiers, Algeria. The DNA of *A. johnsonii* and *A. variabilis* was reported in head lice collected from all three localities of the collection, while DNA of *A. baumannii*

was reported only in El Mohammadia. Findings from previous study on head lice collected from elementary schoolchildren in four localities in Algiers, Algeria have led to the same results, whether a widespread infection of head lice with the same *Acinetobacter* species found in our study [27].

*Acinetobacter baumannii* was isolated for the first time from the body lice found on homeless people in Marseille (France), as well as from various countries around the world [50]. In recent years, the DNA of *A. baumannii*, in addition to several species of *Acinetobacter*, were found in head lice collected from elementary schoolchildren in Paris belonging to clade A [51], in Thailand belonging to A and C [14], in Algeria belonging to clade A [27] and in head lice collected from pygmy populations in the Republic of the Congo belonging to clades A, D, and C [11]. *Acinetobacter baumannii* DNA has also been detected in head lice collected from healthy individuals in Ethiopia [26]. The presence of *A. baumannii* DNA was even identified in ancient human head lice remains belonging to clade A [9]. Our study is the first to report the identification of *A. baumannii* DNA in Nigerien head lice belonging to clade E, as well as the identification of several species of *Acinetobacter* in head lice belonging to clade B in Algeria.

*Acinetobacter* species are widespread in nature, including in water, soil, living organisms and on the skin of patients and healthy subjects [52]. Recent works have shown that the *Acinetobacter* infection can be highly prevalent among body and head lice. However, it is still not clear whether these *Acinetobacter* strains, present in head lice, are the same as those responsible for human infections [26], the clinical significance of this finding is still unknown. Furthermore, molecular evidence for the presence of DNA of *C. burnetii* and several *Acinetobacter* species cannot distinguish between pathogens accidentally acquired from the blood of infected individuals, and those established in a competent vector which can maintain and transmit the pathogen [17].

## Conclusions

Our study is the first to report that head lice from Nigerian refugees belong to haplogroup E, and to confirm that the clade E has a west African distribution. We also detected, for the first time, the presence of *C. burnetii* and *A. baumannii* in head lice from Niger. Nevertheless, further studies of louse-borne pathogens are necessary to better understand the specificity of lice to different pathogenic bacteria. Further studies are also required in order to explain their ability to harbor and, in certain cases, transmit pathogens from one person to another. Moreover, these results indicate that refugee populations generate a potential risk of spreading emerging diseases and thus pose a significant epidemic threat

to public health in Algeria, where individual refugees living in conditions of poverty and promiscuity may serve as indigenous reservoirs of multiple micro-organisms.

#### Abbreviations

Cyt b: Cytochrome b; MST: Multispacer spacer typing; PCR: Polymerase chain reaction; qPCR: Quantitative real-time polymerase chain reaction

#### Acknowledgements

We gratefully thank IHU Fondation Méditerranée-Infection for supporting the study.

#### Funding

This study was supported by Méditerranée Infection and the National Research Agency under the “Investissements d’avenir” program, reference ANR-10-IAHU-03.

#### Availability of data and materials

The data supporting the conclusions of this article are included within the article. Representative sequences were submitted to the GenBank database under the accession numbers: MH392478, MH392479, MH392480 and MH392481.

#### Authors’ contributions

Conceived and designed the experiments: OM, FF and IB. Collected samples: ML, MN and IB. Conducted the experiments: ML and OM. Analyzed the data: ML, NA and OM. Wrote the paper: ML, NA, MN, OM, FF and RD. All authors read and approved the final manuscript.

#### Ethics approval and consent to participate

This study was approved by the Algerian Red Crescent organization (292/CRA/PRE), Algeria. Head lice were collected from the scalps of Nigerien refugees arriving in Algeria during a registered epidemiological study. Verbal consent was obtained from each infested individual. Written consent could not be obtained because most of the subjects involved in the study were illiterate. The anonymity of the individuals who provided the lice used in the present study was preserved. Meanwhile, head lice samples from the local population were collected from the scalps of schoolchildren under the approval of the Ministry of National Education in Algeria (No. N14/0.0.2/224) with the parents’ explicit verbal consent.

#### Competing interests

The authors declare that they have no competing interests.

#### Publisher’s Note

Springer Nature remains neutral with regard to jurisdictional claims in published maps and institutional affiliations.

#### Author details

<sup>1</sup>IRD, AP-HM, SSA, VITROME, IHU-Méditerranée Infection, Aix Marseille Univ, Marseille, France. <sup>2</sup>Laboratoire de Valorisation et Conservation des Ressources Biologiques (VALCOR), Faculté des Sciences, Université M’Hamed Bougara Boumerdes, Boumerdes, Algeria. <sup>3</sup>IRD, AP-HM, MEPHI, IHU-Méditerranée Infection, Aix-Marseille Univ, Marseille, France. <sup>4</sup>Laboratoire Biodiversité et Environnement: Interactions, Génomes, Département de Biologie, Université des Sciences et Technologies Houari Boumediene, Bab Ezzouar, Algeria. <sup>5</sup>Ecole Supérieure des Sciences de l’Aliment et des Industries Agro-Alimentaires, Algiers, Algeria.

Received: 21 February 2018 Accepted: 1 June 2018

Published online: 15 June 2018

#### References

- Light JE, Smith VS, Allen JM, Durden LA, Reed DL. Evolutionary history of mammalian sucking lice (Phthiraptera: Anoplura). *BMC Evol Biol.* 2010;10:292.
- Reed DL, Smith VS, Hammond SL, Rogers AR, Clayton DH. Genetic analysis of lice supports direct contact between modern and archaic humans. *PLoS Biol.* 2004;2:e340.
- Veracx A, Raoult D. Biology and genetics of human head and body lice. *Trends Parasitol.* 2012;28:563–71.
- Badiaga S, Brouqui P. Human louse-transmitted infectious diseases. *Clin Microbiol Infect.* 2012;18:332–7.
- Boutellis A, Abi-Rached L, Raoult D. The origin and distribution of human lice in the world. *Infect Genet Evol.* 2014;23:209–17.
- Brouqui P. Arthropod-borne diseases associated with political and social disorder. *Annu Rev Entomol.* 2011;56:357–74.
- Chosidow O. Scabies and pediculosis. *Lancet Lond Engl.* 2000;355:819–26.
- Izri A, Uzzan B, Maigret M, Gordon MS, Bouges-Michel C. Clinical efficacy and safety in head lice infection by *Pediculus humanus capitis* De Geer (Anoplura: Pediculidae) of a capillary spray containing a silicon-oil complex. *Parasite.* 2010;17:329–35.
- Amanzougaghene N, Mumcuoglu KY, Fenollar F, Alfi S, Yesilyurt G, Raoult D, et al. High ancient genetic diversity of human lice, *Pediculus humanus*, from Israel reveals new insights into the origin of clade b lice. *PLoS One.* 2016;11:e0164659.
- Ashfaq M, Prosser S, Nasir S, Masood M, Ratnasingham S, Hebert PDN. High diversity and rapid diversification in the head louse, *Pediculus humanus* (Pediculidae: Phthiraptera). *Sci Rep.* 2015;5:14188.
- Amanzougaghene N, Akiana J, Mongo Ndombe G, Davoust B, Nsana NS, Parra HJ, et al. Head lice of pygmies reveal the presence of relapsing fever borreliae in the Republic of Congo. *PLoS Negl Trop Dis.* 2016;10:e0005142.
- Drali R, Shako JC, Davoust B, Diatta G, Raoult D. A new clade of African body and head lice infected by *Bartonella quintana* and *Yersinia pestis* – Democratic Republic of the Congo. *Am J Trop Med Hyg.* 2015;93:990–3.
- Light JE, Allen JM, Long LM, Carter TE, Barrow L, Raoult D, et al. Geographic distributions and origins of human head lice (*Pediculus humanus capitis*) based on mitochondrial data. *J Parasitol.* 2008;94:1275–81.
- Sunantaraporn S, Sanprasert V, Pengsakul T, Phumee A, Boonserm R, Tawatsin A, et al. Molecular survey of the head louse *Pediculus humanus capitis* in Thailand and its potential role for transmitting *Acinetobacter* spp. *Parasit Vectors.* 2015;8:127.
- Xiong H, Campelo D, Pollack RJ, Raoult D, Shao R, Alem M, et al. Second-generation sequencing of entire mitochondrial coding-regions (~15.4 kb) holds promise for study of the phylogeny and taxonomy of human body lice and head lice. *Med Vet Entomol.* 2014;28:40–50.
- Candy K, Amanzougaghene N, Izri A, Burn S, Durand R, Louni M, et al. Molecular survey of head and body lice, *Pediculus humanus*, in France. *Vector Borne Zoonotic Dis.* 2018;18:243–51.
- Raoult D, Roux V. The body louse as a vector of reemerging human diseases. *Clin Infect Dis.* 1999;29:888–911.
- Houhamdi L, Lepidi H, Drancourt M, Raoult D. Experimental model to evaluate the human body louse as a vector of plague. *J Infect Dis.* 2006;194:1589–96.
- Piarroux R, Abedi AA, Shako JC, Kebela B, Karhemere S, Diatta G, et al. Plague epidemics and lice, Democratic Republic of the Congo. *Emerg Infect Dis.* 2013;19:505–6.
- Raoult D. A personal view of how paleomicrobiology aids our understanding of the role of lice in plague pandemics. *Microbiol Spectr.* 2016;4. doi: <https://doi.org/10.1128/microbiolspec.PoH-0001-2014>.
- Amanzougaghene N, Florence F, Sangaré AK, Mahamadou S, Sissoko, Ogobara K, et al. Detection of bacterial pathogens including potential new species in human head lice from human head lice from Mali. *PLoS One.* 2017;12:e0184621.
- Angelakis E, Rolain JM, Raoult D, Brouqui P. *Bartonella quintana* in head louse nits. *FEMS Immunol Med Microbiol.* 2011;62:244–6.
- Boutellis A, Veracx A, Angelakis E, Diatta G, Mediannikov O, Trape J-F, et al. *Bartonella quintana* in head lice from Senegal. *Vector Borne Zoonotic Dis.* 2012;12:564–7.
- Boutellis A, Mediannikov O, Bilcha KD, Ali J, Campelo D, Barker SC, et al. *Borrelia recurrentis* in head lice, Ethiopia. *Emerg Infect Dis.* 2013;19:796–8.
- Sangaré AK, Boutellis A, Drali R, Socolovschi C, Barker SC, Diatta G, et al. Detection of *Bartonella quintana* in African body and head lice. *Am J Trop Med Hyg.* 2014;91:294–301.
- Kempf M, Abdissa A, Diatta G, Trape JF, Angelakis E, Mediannikov O, et al. Detection of *Acinetobacter baumannii* in human head and body lice from Ethiopia and identification of new genotypes. *Int J Infect Dis.* 2012;16:14–6.
- Mana N, Louni M, Parola P, Bitam I. Human head lice and public lice reveal the presence of several *Acinetobacter* species in Algiers, Algeria. *Comp Immunol Microbiol Infect Dis.* 2017;53:33–9.
- Antinori S, Mediannikov O, Corbellino M, Grande R, Parravicini C, Bestetti G, et al. Louse-borne relapsing fever (*Borrelia recurrentis*) in a Somali refugee arriving in Italy: a re-emerging infection in Europe? *PLoS Negl Trop Dis.* 2016;10:e0004522.

29. Antinori S, Mediannikov O, Corbellino M, Raoult D. Louse-borne relapsing fever among East African refugees in Europe. *Travel Med Infect Dis.* 2016;14:110–4.
30. Cutler SJ. Refugee crisis and re-emergence of forgotten infections in Europe. *Clin Microbiol Infect.* 2016;22:8–9.
31. Darcis G, Hayette MP, Bontems S, Sauvage AS, Meuris C, Van Esbroeck M, et al. Louse-borne relapsing fever in a refugee from Somalia arriving in Belgium. *J Travel Med.* 2016;23 <https://doi.org/10.1093/jtm/taw009>.
32. Hoch M, Wieser A, Löscher T, Margos G, Pürmer F, Zühl J, et al. Louse-borne relapsing fever (*Borrelia recurrentis*) diagnosed in 15 refugees from northeast Africa: Epidemiology and preventive control measures, Bavaria, Germany, July to October 2015. *Eurosurveillance.* 2015;20 <https://doi.org/10.2807/1560-7917.ES.2015.20.42.30046>.
33. Robinson D, Leo N, Procvic P, Barker SC. Potential role of head lice, *Pediculus humanus capitis*, as vectors of *Rickettsia prowazekii*. *Parasitol Res.* 2003;90:209–11.
34. Glazunova O, Roux V, Freylikman O, Sekeyova Z, Fournous G, Tyczka J, et al. *Coxiella burnetii* genotyping. *Emerg Infect Dis.* 2005;11:1211–7.
35. Tamura K, Stecher G, Peterson D, Filipinski A, Kumar S. MEGA6: Molecular Evolutionary Genetics Analysis version 6.0. *Mol Biol Evol.* 2013;30:2725–9.
36. Boutellis A, Bitam I, Fekir K, Mana N, Raoult D. Evidence that clade A and clade B head lice live in sympatry and recombine in Algeria. *Med Vet Entomol.* 2015;29:94–8.
37. Drali R, Boutellis A, Raoult D, Rolain JM, Brouqui P. Distinguishing body lice from head lice by multiplex real-time PCR analysis of the Phum\_ PHUM540560 gene. *PLoS One.* 2013;8:1–6.
38. Bonilla DL, Durden LA, Eremeeva ME, Dasch GA. The biology and taxonomy of head and body lice-implications for louse-borne disease prevention. *PLoS Pathog.* 2013;9:e1003724.
39. Kim JH, Previte DJ, Yoon KS, Murenzi E, Koehler JE, Pittendrigh BR, et al. Comparison of the proliferation and excretion of *Bartonella quintana* between body and head lice following oral challenge. *Insect Mol Biol.* 2017;26:266–76.
40. Previte D, Olds BP, Yoon K, Sun W, Muir W, Paige KN, et al. Differential gene expression in laboratory strains of human head and body lice when challenged with *Bartonella quintana*, a pathogenic bacterium. *Insect Mol Biol.* 2014;23:244–54.
41. Murray ES, Torrey SB. Virulence of *Rickettsia prowazekii* for head lice. *Ann N Y Acad Sci.* 1975;266:25–34.
42. Mediannikov O, Fenollar F, Socolovschi C, Diatta G, Bassene H, Molez JF, et al. *Coxiella burnetii* in humans and ticks in rural Senegal. *PLoS Negl Trop Dis.* 2010;4:e654.
43. Vanderburg S, Rubach MP, Halliday JEB, Cleaveland S, Reddy EA, Crump JA. Epidemiology of *Coxiella burnetii* infection in Africa: a One Health systematic review. *PLoS Negl Trop Dis.* 2014;8:e2787.
44. Julvez J, Michault A, Kerdelhue C. Serological study of rickettsiose in Niamey, Niger. *Med Trop (Mars).* 1997;57:153–6 (In French).
45. Haumesser JB, Poutrel B. Rickettsiosis in the Niger. Epidemiological investigation carried out in the Maradi area. *Rev Elev Med Vet Pays Trop.* 1973;26:293–8.
46. Cutler S, Abdissa A, Adamu H, Tolosa T, Gashaw A. *Bartonella quintana* in Ethiopian lice. *Comp Immunol Microbiol Infect Dis.* 2012;35:17–21.
47. Giroud P, Jadin J. Infection latente et conservation de "*Rickettsia burnetii*" chez l'homme, le role du pou. *Bull Soc Pathol Exot.* 1954;47:764–5.
48. Babudieri B. Q fever: A zoonosis. *Adv Vet Sci.* 1959;5:82–182.
49. Louni M, Mana N, Bitam I, Dahmani M, Parola P, Fenollar F, et al. Body lice of homeless people reveal the presence of several emerging bacterial pathogens in northern Algeria. *PLoS Negl Trop Dis.* 2018;12:e0006397.
50. La Scola B, Raoult D. *Acinetobacter baumannii* in human body louse. *Emerg Infect Dis.* 2004;10:1671–3.
51. Bouvresse S, Socolovschi C, Berdjane Z, Durand R, Izri A, Raoult D, et al. No evidence of *Bartonella quintana* but detection of *Acinetobacter baumannii* in head lice from elementary schoolchildren in Paris. *Comp Immunol Microbiol Infect Dis.* 2011;34:475–7.
52. Vallenet D, Nordmann P, Barbe V, Poirel L, Mangenot S, Bataille E, et al. Comparative analysis of *Acinetobacters*: three genomes for three lifestyles. *PLoS One.* 2008;3:e1805.
53. Li W, Ortiz G, Fournier PE, Gimenez G, Reed DL, Pittendrigh B, et al. Genotyping of human lice suggests multiple emergences of body lice from local head louse populations. *PLoS Negl Trop Dis.* 2010;4:e641.
54. La Scola B, Gundi VA, Khamis A, Raoult D. Sequencing of the *rpoB* gene and flanking spacers for molecular identification of *Acinetobacter* species. *Clin Microbiol.* 2006;44:827–32.
55. Rolain JM, Stuhl L, Maurin M, Raoult D. Evaluation of antibiotic susceptibilities of three rickettsial species including *Rickettsia felis* by a quantitative PCR DNA assay. *Antimicrob Agents Chemother.* 2002;46:2747–51.
56. Nguyen-Hieu T, Aboudharam G, Signoli M, Rigeade C, Drancourt M, Raoult D. Evidence of a louse-borne outbreak involving typhus in Douai, 1710–1712 during the war of Spanish succession. *PLoS One.* 2010;5:e15405.
57. Parola P, Diatta G, Socolovschi C, Mediannikov O, Tall A, Bassene H, et al. Tick-borne relapsing fever borreliosis, rural senegal. *Emerg Infect Dis.* 2011;17:883–5.
58. Angelakis E, Socolovschi C, Raoult D. Short report: *Bartonella quintana* in *Cimex hemipterus*, Rwanda. *Am J Trop Med Hyg.* 2013;89:986–7.
59. Dahmani M, Davoust B, Benterki MS, Fenollar F, Raoult D, Mediannikov O. Development of a new PCR-based assay to detect *Anaplasmataceae* and the first report of *Anaplasma phagocytophilum* and *Anaplasma platys* in cattle from Algeria. *Comp Immunol Microbiol Infect Dis.* 2015;39:39–45.

**Ready to submit your research? Choose BMC and benefit from:**

- fast, convenient online submission
- thorough peer review by experienced researchers in your field
- rapid publication on acceptance
- support for research data, including large and complex data types
- gold Open Access which fosters wider collaboration and increased citations
- maximum visibility for your research: over 100M website views per year

At BMC, research is always in progress.

Learn more [biomedcentral.com/submissions](https://biomedcentral.com/submissions)

