



HAL
open science

A Real-time Human-Robot Interaction Framework with Robust Background Invariant Hand Gesture Detection

Osama Mazhar, Benjamin Navarro, Sofiane Ramdani, Robin Passama, Andrea Cherubini

► **To cite this version:**

Osama Mazhar, Benjamin Navarro, Sofiane Ramdani, Robin Passama, Andrea Cherubini. A Real-time Human-Robot Interaction Framework with Robust Background Invariant Hand Gesture Detection. *Robotics and Computer-Integrated Manufacturing*, 2019, 60, pp.34-48. 10.1016/j.rcim.2019.05.008 . hal-01823338v2

HAL Id: hal-01823338

<https://hal.science/hal-01823338v2>

Submitted on 20 May 2019

HAL is a multi-disciplinary open access archive for the deposit and dissemination of scientific research documents, whether they are published or not. The documents may come from teaching and research institutions in France or abroad, or from public or private research centers.

L'archive ouverte pluridisciplinaire **HAL**, est destinée au dépôt et à la diffusion de documents scientifiques de niveau recherche, publiés ou non, émanant des établissements d'enseignement et de recherche français ou étrangers, des laboratoires publics ou privés.

A Real-time Human-Robot Interaction Framework with Robust Background Invariant Hand Gesture Detection

Osama Mazhar*, Benjamin Navarro, Sofiane Ramdani,
Robin Passama, Andrea Cherubini

*LIRMM, Université de Montpellier, CNRS,
Montpellier, France*

Abstract

In the light of factories of the future, to ensure productive and safe interaction between robot and human coworkers, it is imperative that the robot extracts the essential information of the coworker. We address this by designing a reliable framework for *real-time safe human-robot collaboration*, using static hand gestures and 3D skeleton extraction. OpenPose library is integrated with Microsoft Kinect V2, to obtain a 3D estimation of the human skeleton. With the help of 10 volunteers, we recorded an image dataset of alpha-numeric static hand gestures, taken from the American Sign Language. We named our dataset OpenSign and released it to the community for benchmarking. Inception V3 convolutional neural network is adapted and trained to detect the hand gestures. To augment the data for training the hand gesture detector, we use OpenPose to localize the hands in the dataset images and segment the backgrounds of hand images, by exploiting the Kinect V2 depth map. Then, the backgrounds are substituted with random patterns and indoor architecture templates. Fine-tuning of Inception V3 is performed in three phases, to achieve validation accuracy of 99.1% and test accuracy of 98.9%. An asynchronous integration of image acquisition and hand gesture detection is performed to ensure real-time detection of hand gestures. Finally, the proposed framework is integrated in our physical human-

*Corresponding author
Email address: osamazhar@yahoo.com (Osama Mazhar)

robot interaction library OpenPHRI. This integration complements OpenPHRI by providing successful implementation of the ISO/TS 15066 safety standards for "safety rated monitored stop" and "speed and separation monitoring" collaborative modes. We validate the performance of the proposed framework through a complete teaching by demonstration experiment with a robotic manipulator.

Keywords: Physical Human-Robot Interaction, Safe Collaborative Robotics, Convolutional Neural Networks, Real-time Vision, Transfer Learning.

1. Introduction

The advent of Industry 4.0, as a modern trend of automation and data exchange in the manufacturing industry, has proposed the concept of smart factories of the future [1]. This evolving industry demands a more effective and involved collaboration between humans and robots, where each partner can constructively utilize the strengths of the others to increase productivity and work quality [2].

Safety of the human coworkers and an efficacious interaction between humans and robots are key factors of success in such an industrial setting [3, 4]. To ensure safety, the ability of the robot to detect an external force, differentiate between intended and accidental forces and to adapt to the rapidity of the human coworker is essential [5]. Nevertheless, the sense of vision is also imperative for modern collaborative robots to monitor the behavior and actions of their human coworkers for communicating or preventing accidents [6].

Generally, robots are designed and programmed to perform specialized tasks. Hence, it is difficult for an unskilled worker to reprogram the robot for a new task [7]. The traditional robot teaching methods are tedious, non-intuitive and time consuming. Multi-modal interfaces that include vision-based gesture detection frameworks, constitute instances of natural and tangible user interfaces (NUIs and TUIs). NUIs exploit the user's pre-existing knowledge and actions – related to daily practices – to offer natural and realistic interactions. This allows humans to directly interact with robots through voice, gestures, touch and

motion tracking rather than instructing them the same by typing commands [8]. In many industrial settings, communication through speech is not appreciated because of the interference produced by machines operations. The conventional use of teach pendants is itself too complicated for new users to learn. Portable devices are always required to be charged almost on daily-basis and may also have complex menu trees or networking problems in the interaction software. Manoeuvring the robot to specific target locations by hand, in physical human-robot interactions like in teach-by-demonstration applications, is the most intuitive way of interaction. To unburden the human coworker from carrying any extra device while s/he manoeuvres the robot with her/his hands, gestures are considered to be natural and intuitive ways to communicate/interact with the robot [9].

Hence, in this paper we propose a real-time robust and background independent hand gesture detection module based on transfer learning [10] with convolutional neural networks. The intuitiveness of our system comes from the fact that the human does not need to wear any specific suits (Motion capture suits or inertial sensors) nor to carry a specialized remote control or learn complicated teach pendant commands. Such additional burdens would make the interaction unnatural [11].

We integrate the proposed hand gesture detection module with our physical human-robot interaction library OpenPHRI [12] for robot control. On one hand, this ensures safety of the human coworker – by complementing the standard collaborative modes in OpenPHRI – while on the other provides a natural means for robot programming and reprogramming, through hand gestures.

Background and related work are described in Sect. II. We summarize our contributions in Sect. III, while Skeleton extraction and hand localization are detailed in Sect. IV. We describe our convolutional neural network for hand gesture detection in Sec. V, while OpenPHRI integration and collaborative modes imposed by safety standards are briefly explained in Section VI. The robotic framework and example industrial application of the proposed framework are presented in Sect. VI. We conclude in section VII.

2. Background and related work

55 The authors of [1] present the emerging concept of cyber-physical structure, which will employ extensive automation and self-organization of machines and component parts in complex manufacturing scenarios, using different sensor modalities. The primary role of human workers will be to dictate a production strategy and to supervise its implementation by the robotic systems.

60 To achieve this goal, safe Human-Robot Interaction is crucial. According to [13], collaboration can be achieved only when safety is first guaranteed. We will hereby survey the state of art with a similar perspective. We will review the literature on safety in collaborative robotics, gesture detection for interaction and sign language detection relevant to our research.

65 2.1. Safety in Collaborative Robotics

A recent survey on human-robot collaboration in industrial settings is presented in [8]. The authors talk about safety citing several ISO standards, discuss intuitive interfaces for robot programming/collaboration and explore different industrial applications of human-robot collaboration. With regards to safety, 70 they recall the four collaborative modes from ISO 10218-1/2 and ISO TS 15066 [14, 15, 16]: “Safety-rated monitored stop”, “Hand guiding”, “Speed and separation monitoring” and “Power and force limitation”. Since in this work we addressed the first and third, let us now focus on works related to these modes.

In [17], the authors present a tire workshop assistant robot. SICK S300 75 laser sensors are utilized for navigation, obstacle avoidance and human detection. The authors define three areas surrounding the robot namely “Safe area”, “Collaboration area” and “Forbidden area”. The main disadvantage of this technology[18] is that several thousands of reflective landmarks are required for reliable navigation of the robot in a cluttered environment.

80 The authors of [19] thoroughly discuss several aspects of *speed and separation monitoring* in collaborative robot workcells. They analyze laser-based human tracking systems. The human coworkers are detected through centroid

estimation of the detected objects and as the authors state, this varies based on the motion of legs, shifting of clothes, and sensor noise. The authors emphasize the technological advancement of safety-rated cameras and on-robot
85 sensing hardware for enabling speed and separation monitoring in unstructured environments. Moreover, the importance of human-specific identification and localization methods is discussed for reliable physical human robot collaboration.

90 In [20], the authors present the preliminary results of their research on sensor-less radio human localization to enable *speed and separation monitoring*. A wireless device-free radio localization method is adopted with several nodes connected in mesh configuration, non-regularly spread over a large indoor area, so that the human-operator being localized does not need to carry
95 an active wireless device. The concept of user tracking in wireless sensor networks is extended in [21]. This study considers the availability of the source attached to the human coworker’s body in the industrial scenario.

The idea of trajectory dependent safety distances is proposed in [22] to attain dynamic *speed and separation monitoring*. This method avoids fixed extra safety
100 clearances and is optimized with respect to the functional task at hand.

Alternative sensing modalities for *speed and separation monitoring* include motion capture systems [23] and vision based depth cameras [13, 24]. In this regard, [18] compares structured light depth cameras and stereo-vision cameras for mobile robot localization in the industry.

105 As all these works highlight, an advantage of vision over other sensors is that it does not require structuring the environment and/or operator. Furthermore, it is generally more rich, portable (a fundamental feature for mobile robots) and low-cost, even when depth is also measured by the sensor (as with Microsoft Kinect). While at present Kinect is far from being certifiable for safety,
110 we are confident that in the near future similar RGB+D sensors will. For all these reasons, in this work we have decided to use RGB+D vision for addressing *safety-rated monitored stops* and *speed and separation monitoring*. As in [19], we adopt the idea of human-specific localization to effectively identify the pres-

ence of humans in cluttered environments. Our contributions on safety will be
115 detailed in the subsequent section after reviewing literature on gesture detection
in human-robot interaction.

2.2. *Gesture Detection in Human-Robot Interaction*

Once safety is guaranteed, collaboration is possible. To this end, researchers
have proposed to use body gestures for communicating with the robot. The
120 literature on gesture detection in human-robot interaction scenarios is enormous.
Here, we focus on works that are related to the idea we propose, by relying
mainly on RGB+D sensing.

A task-oriented intuitive programming procedure is presented in [25] to
demonstrate human-like behavior of a dual-arm robot. The authors decompose
125 complex activities in simpler tasks that are performed through task-oriented
programming where the focus is given to “what to be done, rather than how
to do it”. Moreover, through the development of intuitive human interfaces,
high level commands are transferred to a sequence of robot motion and actions.
For human-robot interaction, the authors use Kinect V1 [26] to extract human
130 skeletal coordinates for gesture detection, and the built-in microphone array of
Kinect V1 to detect the oral commands. Whole body gestures (extended arms)
are used to achieve robot motion in a dashboard assembly case. Although the
idea of task decomposition and controlling the robot through human gestures is
beneficial, the considered gestures, as in [27], are counterintuitive and tiring.

135 The authors of [28] present methods for obtaining human worker posture
in a human-robot collaboration task of abrasive blasting. They compare the
performance of three depth cameras, namely Microsoft Kinect V1, Microsoft
Kinect V2 [29] and Intel RealSense R200 [30]. Kinect V1 uses a structured
light approach to estimate the depth map, Kinect V2 is a time-of-flight sensor,
140 while RealSense R200 has a stereoscopic infra-red setting to produce depth.
In the blasting process, the abrasives are suspended in the air or fill the sur-
rounding environment, and significantly decrease the scene visibility. The use
of image-based methods to extract human worker pose is challenging in such

environments. The experimental observations suggest that Kinect V1 performs
145 best in the real blasting environment, although no concrete reason could explain
this. They also present a novel camera rig with an array of four Kinect V1 to
cover a 180° horizontal field of view. The use of Kinect V1, to extract human
pose for a marker-less robot control method is also presented in [31].

In [32], the authors present an online robot teaching method that fuses
150 speech and gesture information using text. Kinect V2 localizes the position of
hands in the scene, while their orientation is measured by an inertial measure-
ment unit. The gesture and speech data are first converted into a description
text, then a text understanding method converts the text to robot commands.
The proposed method is validated by performing a peg-in-hole experiment, plac-
155 ing wire-cut shapes, and an irregular trajectory following task.

To ensure safe interaction, [33, 34] proposes a virtual reality training sys-
tem for human-robot collaboration. A virtual game simulation is developed for
real-time collaboration between industrial robotic manipulators and humans. A
realistic virtual human body, including a simple first person shooter view, simu-
160 lates the user's vision. A head mount display and a Kinect V1 track the human
head and skeleton pose respectively. Several interaction tasks are accomplished.
These include selection of objects, manipulation, navigation and robot control.
This technique is useful to establish the acceptability of a collaborative robot
among humans in a shared workspace, as well as to tackle mental safety issues.

In [7], the authors present a strategy to use speech and a Wii controller
165 to program a Motoman HP6 industrial robot. This helps workers, with no
knowledge of typical programming languages, in teaching different activities
to the robot. A neural network is trained to recognize hand gestures using
features extracted from the accelerometer output of the Wii-controller. In [35],
170 the authors train artificial neural networks to classify 25 static and 10 dynamic
gestures to control an industrial 5 degrees-of-freedom robotic arm. A data glove,
CyberGlove II, and a magnetic tracker, Polhemus Liberty, are used to extract
a total of 26 degrees-of-freedom.

The authors of [5] present a study for measuring trust of human coworkers

175 in fence-less human-robot collaboration for industrial robotic applications. To
ensure safety of the human coworkers, it is essential to equip the robot with
vision sensors, so that it can understand the environment and adapt to the
worker’s behavior. The paper also discusses the use of RGB+D cameras to
detect pointing gestures and proximity monitoring for safety using the depth
180 information. In [36], authors use human gestures to navigate a wheeled robot
through pointing gestures directed on the floor. The interaction scheme also
includes detection of facial gestures which often fails, as stated by the authors,
because the untrained users make those gestures subtly.

In [37], the authors propose object recognition through 3D gestures using
185 Kinect V1. They exploit the depth information from Kinect V1 to subtract
the object background. This strategy often fails if predefined environmental
assumptions are not met. Moreover, a histogram matching algorithm is used
to recognize the objects placed on a white color table. Such techniques have
recently been outperformed by modern deep learning ones like convolutional
190 neural networks [38]. The authors of [39] propose a human-robot interaction
system for the navigation of a mobile robot using Kinect V1. The point cloud
acquired from Kinect V1 is fit on a skeleton topology with multiple nodes,
to extract the human operator pose. This technique is not reliable to obtain
the skeletal pose unless the human body non-linear anatomical constraints are
195 modeled in the design of the skeleton topology.

According to [40], sign language is among the most structured set of gestures.
Hence, in our work, we proposed the use of American Sign Language (ASL) for
communicating with the robot. In the following subsection, we discuss previous
works on sign language detection.

200 2.3. Sign Language Detection

Hand gesture detection techniques can be mainly divided into two categories:
electronic/glove-based systems and vision-based methods. Some researchers pre-
fer the use of wearable sensors to deal with occlusions or varying light conditions
[41]. These sensors are expensive, counterintuitive and limit the operator’s dex-

205 terity in his/her routine tasks. The vision-based methods can be further divided into two categories; a) methods that use markers and b) pure vision-based methods [42]. Since pure vision-based methods do not require the users to wear any data-gloves or markers, they offer ease-of-use for the operators to interact with the robots/machines. Furthermore, in Sect. 2.1 we have highlighted the ad-
210 vantage of using vision for safety monitoring. For these two reasons, here we opt for a pure vision-based method and review only works on vision-based sign language detection.

Early research on purely vision-based methods for ASL recognition dates back to 1992 [43]. In this work, the authors use motion detection to capture
215 start/stop instances of the sign/gesture, hand location tracking to record the trajectory of the gesture, trajectory shape (using curve eccentricity) and detection of hand shapes at each stop position. The hand shapes are classified using the Hough Transform method described in [44]. The authors in [42] utilize a similar method as in [43]. It consists of a Canny filter that detects the hand
220 edges in the scene, followed by a Hough Transform that extracts the feature vector of size 200. A neural network is then devised to classify the hand gestures. The dataset used to train the neural network is extremely small and it is assumed that the image background is uniform. The authors do not mention the hands' localization in the scene during the recognition phase. Thus, it is
225 assumed that the system only works if the hand appears in a specific region of the image.

One of the initial works in detecting ASL gestures through Hidden Markov models is discussed in [40]. The authors propose two settings in this research i.e., the second person view (desk based recognizer) and the first person view
230 (wearable based recognizer). The proposed system recognizes sentences of the form “personal pronoun, verb, noun and adjective, pronoun” generated through 40 randomly chosen words. In both systems, videos were recorded and analyzed offline for ASL translation. An a priori model of the skin color is used to segment hands in the scene, while the absolute positions of the detected blobs in the
235 image are used to distinguish left and right hand. The use of absolute positions

of the hands in addition to a cumbersome wearable camera and computer system on the head significantly constrain the movement of the “signer” in the scene.

Recently in [45], researchers proposed an ASL translation system using binary hand images by keeping the edge information in the image intact. They use an image cross-correlation method to identify the signs by comparison with gesture images in a database. A similar hand gesture detector based on binary images is proposed in [46]. The author proposes a color-independent (using preprocessed binary hand images) hand gesture detector that relies on a convolutional neural network (CNN), inspired by LeNet [47]. The classification accuracy of such system depends largely on the preprocessing steps of image segmentation performed with color or intensity thresholding, while CNNs are inherently able of learning color features robustly, as shown in [48]. Such systems also normally require a plain or white background for hand segmentation, which is hard to obtain in realistic human-robot interaction scenarios.

The use of depth cameras is becoming increasingly popular in applications like hand gestures detection or sign language translation. A thorough survey on 3D hand gesture recognition is presented in [49]. The depth information from such sensors can be used to segment the hands in cluttered backgrounds, by setting a depth threshold, while the normalized depth image of the hand adds the information for correct classification of the hand gestures [50]. The accuracy of such techniques depends on the range and resolution of the depth sensors. Nevertheless, the use of depth sensors is beneficial, since it aids the detection of fine-grained hand gestures [51]. Latest works in deep learning have allowed the extraction of 2D hand skeletons from conventional RGB images [52, 53]. This can be used as a basis to fit a 3D kinematic hand model through an appropriate optimization technique as described in [54], thus eliminating the need of depth sensors for this purpose.

In recent years, the idea of deep learning has made a concrete impact on computer vision research and has been reported to even surpass human-level performance in image classification [48]. Hence, in our work we chose to exploit convolutional neural networks to recognize static hand gestures. We localize and

crop the image regions containing the hands, by exploiting the data from our integration of Kinect V2 with a state-of-the-art 2D skeleton extractor library. Then, we perform background substitution and image processing operations
270 (e.g., histogram equalization, introduction of salt and pepper noise etc.) on the cropped hand images to increase data variance, before training the CNN. This allows the network to learn robust hand features, by avoiding time-consuming rigid image processing methods during the recognition phase.

3. Our Contributions

275 This paper is an extension of our previous work proposed in [55] which presented a tool handover task between robot and human coworker through static hand gestures. A convolutional neural network, inspired mainly by LeNet [47] was developed, to classify four hand gestures. The aim of the previous work was to build a robust hand gesture detection system. However, the dataset was
280 small, and the hand images were recorded only by one individual. This could not guarantee correct detection of hand gestures made by other individuals and with backgrounds having rich textures.

We extend our work by training a hand gesture detector on ten gestures instead of four presented in [55]. Moreover, the backgrounds are now replaced with
285 random pattern/indoor-architecture images to make the detection robust and background invariant. The vision pipeline is then integrated with OpenPHRI [12] to complement the library with two collaborative modes of the ISO/TS 15066 safety standards. This integration is detailed in Section 6. We propose an interaction setting where a human coworker can safely instruct commands
290 to the robot via gestures. In summary the contributions of this paper are the following:

- Development of a real-time hand gesture detection framework that localizes hands through asynchronous integration of OpenPose 2D skeleton detector and classifies hand-gestures at frame-rate of approximately 20fps.

- 295 • Integration of Kinect V2 depth map with the obtained 2D skeleton to get a pseudo 3D skeleton, which is used for "speed and separation monitoring" to ensure the safety of the human coworker.
- Training a background-invariant hand-gesture detection system through transfer learning from Inception V3 convolutional neural network.
- 300 • On-line release of hand gestures database of Kinect V2 recordings for benchmarking and comparison.
- Integration of the developed hand gesture detection module with our safe physical human robot interaction framework, namely OpenPHRI.
- Validation of the proposed framework for robot teaching and control of
305 Kuka LWR 4+ arm with the detected hand-gestures.

The overall pipeline of the proposed framework is illustrated in Fig. 1. Each named box is a cyclic process and dotted arrows represent asynchronous communications between these processes. Each process is described in the following sections in detail.

310 4. Skeleton Extraction and Hand Localization

For safe Human-Robot Interaction, it is essential for the robot to understand its environment, particularly the human coworker. In this research, we opted for Microsoft Kinect V2 as the main sensor to capture the visual information of the human coworker. Kinect V2 is a time-of-flight sensor and provides a larger field-
315 of-view and higher resolution RGB and depth images than its predecessor Kinect V1. This allows the robot to extract functional information from the scene, like human(s) presence or object/obstacle detection, including depth perception.

4.1. Skeleton Extraction Module

In our work we utilize OpenPose [53, 52], to extract skeletal joint coordinates, as in [56, 57]. This library returns 2D skeletal coordinates (x_i, y_i, c_i) , for $i =$
320

1, ..., 18, from a RGB image, using confidence maps and parts affinity fields in a multi-person scene; x_i and y_i are the abscissas and ordinates respectively of 18 COCO body parts [58], while c_i represent their confidence measure. OpenPose works on the principle of “convolutional pose machines” described in [52].

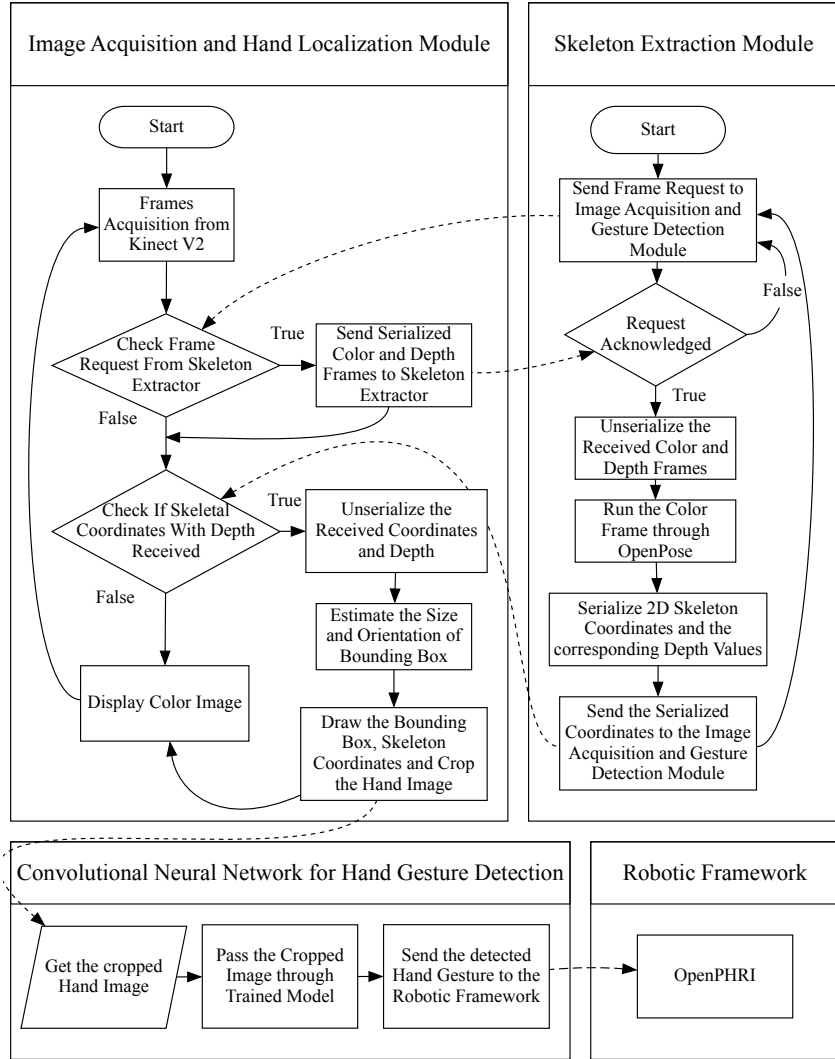


Figure 1: The overall pipeline of our framework for pHRI using hand gestures

325 OpenPose is a robust skeleton extractor and is not trained on pre-defined body poses. It extracts each joint independently from the overall body pose.

Hence, it is preferred over libraries like OpenNI and Microsoft SDK as they are often not accurate in skeleton extraction, require initialization pose and constraint the user to face the sensor. For real-time skeleton extraction, this method requires a multi-GPU hardware with the output frame-rate mainly dependent on the number of persons appearing in the scene. The average frame rate that is achievable using two Nvidia GeForce GTX 1080 on full-HD Kinect V2 RGB image is approximately 14 fps. Since we currently employ only one GPU in our framework, we obtain 6 fps with 1 person in the scene.

4.2. Image Acquisition and Hand Localization Module

The strategy to localize human body and its sub-parts (i.e., hands or face) depends mainly on the output of the sensor of choice. In [59] the authors use skin color for hand segmentation using a conventional RGB camera, as in [46]. In [60], human body localization is performed using laser sensors, and its sub-parts are obtained through Kinect with the OpenNI library as in [61]. In [39], the authors localize the human body, inspired by [62], by merging clusters of the point cloud obtained from the Kinect V1 after voxel filtering and ground plane removal. Lately, infrared based sensors e.g., Leap Motion, are developed to track fingers of a hand in the near proximity (within 25 to 600 millimeters) of the sensor. However this range is too close for our application. In [54], authors adapt a state-of-the-art object detection deep learning technique namely YOLOv2, adapted to localize hands and head/face of a person in a scene. The authors have utilized OpenPose to first extract hands and face images from recorded videos with human activity, and then used these images to train YOLOv2 to detect hands and the face of the person in the scene in real-time. The face is detected to differentiate left hand from the right one. This is an efficient method to detect hands in the scene in real-time but requires a separate training/adaptation of YOLOv2 for hands and faces.

In our research, since we obtain the skeletal joint coordinates from OpenPose, training a separate hand detector to localize hands is not required. To estimate the hands position, we fit a line between the elbow joint and the wrist joint

returned by OpenPose and extend this line to one-third of its original length
 (empirical value) in the direction of hand to approximately reach the center of
 hand. A bounding box is then centered at the approximated hand center at an
 angle which the forearm makes with the horizontal. This makes the hand image
 acquisition rotation invariant. The size of the bounding box is determined by
 the mean depth value of a 6×6 matrix centered at the wrist joint, obtained
 through Kinect V2 depth map as shown in Fig. 2. The hand images are cropped
 with reference to the tilted bounding box, re-scaled to size 224×224 pixels and
 rotated again such that the cropped image becomes vertical.

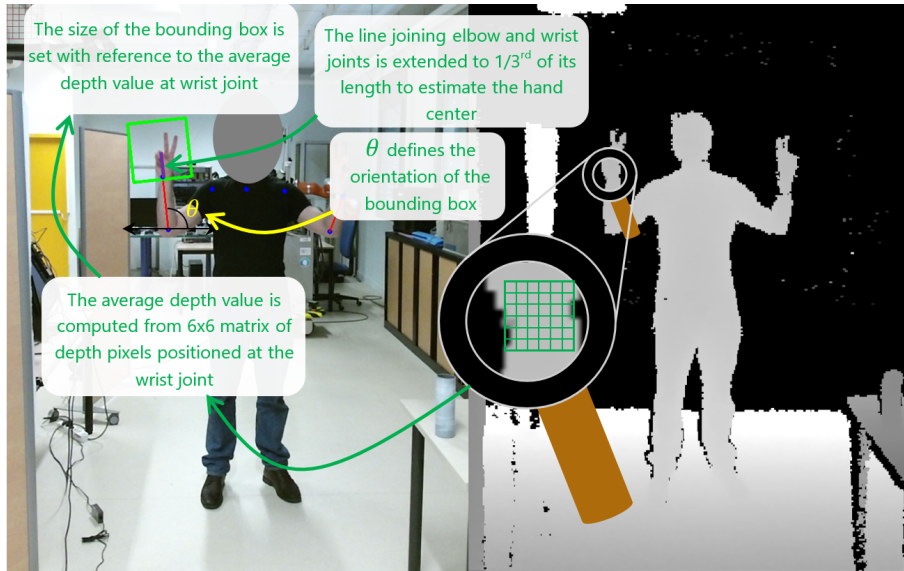


Figure 2: Localization of hand through OpenPose is illustrated. The bounding box is tilted with an angle that the forearm makes with horizontal, while the size of bounding box is determined by the mean depth value of the wrist joint. The mean depth value is computed by averaging the depth pixel values of a 6×6 matrix centered at the wrist joint.

4.3. Asynchronous Integration of the Modules

In our previous work [55], we integrated OpenPose with gesture recognition sequentially to obtain an overall temporal resolution of approximately 4 fps. In this work, an inter-process distributed system is designed through

370 nanomsg socket library¹ which has drastically increased the frame rate of the
vision pipeline. The afore-mentioned inter-process distributed system works
using a "request-reply" communication pattern, known as scalability protocol.
Furthermore, it ensures that no frames are lost during communication. Figure 1
illustrates this asynchronous communication between the proposed framework
375 modules via dotted lines. The image acquisition and hand localization module
retrieves the image stream from Kinect V2 and checks if a frame request has
arrived from the skeleton extraction module. When a frame request is received,
the current RGB and depth image are first serialized through flatbuffers² and
then passed to the skeleton extraction module. The skeleton extraction module
380 unserializes the received frames with flatbuffers and then pass the RGB image
through the forward-pass of OpenPose which returns a vector of 2D skeleton
coordinates (x_i, y_i, c_i) . The calculated mean depth values, as described in the
previous section, are concatenated with the 2D skeleton coordinates and this
3D vector (x_i, y_i, d_i) is then sent to the image acquisition and hand localization
385 module. The integration of Kinect V2 depth map with the 2D skeleton coordi-
nates from OpenPose however does not represent the actual 3D coordinates
of the joints and represents the surface depth value of the joints. There is a
possibility that a joint is occluded in the scene by an object or the body itself.
To prevent false detection of depth hence preventing potential accident, we use
390 the confidence measure for each joint returned by OpenPose. The depth value
of each joint is only updated if $c_i > 0.5$ (this is an empirical value), otherwise
the previous depth value is kept. The image acquisition and hand localiza-
tion module expects to receive coordinates from skeleton extraction module in
each execution cycle. Once the coordinates are received, the hand is segmented
395 and cropped image (described in Section 4.2) runs through the forward-pass of
trained convolutional neural network for hand gesture detection. The detected
hand gesture label is sent to the robot controller running OpenPHRI to pilot the

¹<https://nanomsg.org>

²<https://google.github.io/flatbuffers>.

experiment. The overall frame rate of our gesture detection pipeline is approximately 20 fps while the skeleton is extracted and the hand location is updated
400 at around 5 fps. This significantly improves the execution performance of the vision system as compared to that in [55], which finally leads to a system that better reacts to human commands.

5. Convolutional Neural Network for Hand Gestures Detection

In our previous work [55], we designed the CNN architecture for hand im-
405 ages with relatively plain backgrounds, while the number of gestures were set to 4 and the gestures were recorded by a single person. In this research, we used 10 static hand gestures recorded by 10 volunteers (8 males and 2 females) of age 22 to 35 and the backgrounds of the hand images are substituted with random pattern and indoor architecture images (explained in Section 5.2). This
410 makes the recognition problem more complex as compared to the one presented in [55], where only 1 volunteer and 4 gestures had been considered. Therefore we opted for transfer learning for gesture recognition, exploiting state-of-the-art CNNs pre-trained on large image data from the ImageNet Large Scale Visual Recognition Challenge (ILSVRC) [63]. In particular, Inception V3 [64] which
415 is state-of-the-art in image classification for 1000 classes, is adapted for our background-independent hand-gesture recognition task. Inception V3 is available in Keras python library [65] with pre-trained weights. Figure. 3 shows samples of the static gestures we trained our framework on. The gestures include 9 letters/numbers taken from ASL [66] and a **None** gesture that is not
420 among these nine. The letters/numbers are chosen such that they resemble with each other (like F, 7 and W; A, L and Y) so as to challenge the training and ensuring robustness of the CNN. The **None** gesture is important to determine if the person does not intend to interact with the robot. Our system also generates this label when the line joining the elbow and wrist joint (forearm) of the user is
425 too low (in the lower two quadrants of the axes centered at the elbow joint). In this case, the robot controller ignores this command and does not initiate any

action (which is likely undesired, since the user’s hand is low). We could have excluded the **None** gesture from the trained network, by applying a predefined threshold to the nine (one per class) network scores. However, since the relative
430 scores of the ten classes vary a lot according to the operating conditions, it is not possible to fix a priori such threshold.



Figure 3: Samples of the gestures considered for training. The labels represent the letters and the numbers taken from American Sign Language. The last gesture is one of the several **None** gestures included in the training set.

5.1. Preparation of Dataset/Dataset recordings

To create a dataset for gesture recognition and off-line development, RGB and depth image streams from Kinect V2 are saved in the local workstation.
435 The frames are saved with an approximate frame rate of 20 fps. Each gesture is recorded by each volunteer for around 12 seconds with both hands (see Fig. 4), at three distances of 5, 3 and 1.5 meters away from the sensor. The depth information near Kinect V2 is rich and accurate, thus the images recorded at the distance of 1.5 meters are used for the fine-tuning of Inception V3 (discussed
440 in Section 5.3). However, since the network is trained only on RGB images, the hand gestures can also be recognized at other distances. We are releasing our dataset OpenSign³ online. OpenSign contains RGB and depth (registered)

³<http://bit.do/OpenSign>

frames of volunteers recording 10 gestures. The RGB images are saved in *png* format, while the float data of the depth images are saved in *bin* files. The total
445 number of images in our dataset is 20950. These include 8646 original images, and 12304 synthetic images obtained by substituting the background with the technique that we will explain in Sect. 5.2.



Figure 4: A volunteer recording '7' gesture in the laboratory

We divide the dataset of 20950 images with a ratio of 3:1:1, i.e., 12570 train images and 4190 images each for cross validation and test. Train images go
450 through extensive preprocessing (explained in Section 5.2), while only selective preprocessing operations are applied to cross-validation images to keep them near those obtained during recognition in the robotic interaction experiments.

5.2. Background substitution and Preprocessing of the Hand Images

Background substitution is performed so the network is trained to detect
455 hand gestures independently from the background. We use nearly 1100 images of random pattern and indoor architectures which are freely available on the internet⁴. The background substitution process is illustrated in Fig. 5. A binary mask for background substitution is created using the depth information from Kinect V2. All the pixels that lie at distance within $\pm 18\%$ (empirical value) of

⁴<https://pixabay.com/>

460 the mean depth value computed at the wrist joint (obtained through OpenPose) are set to 1, while the rest are zeroed.

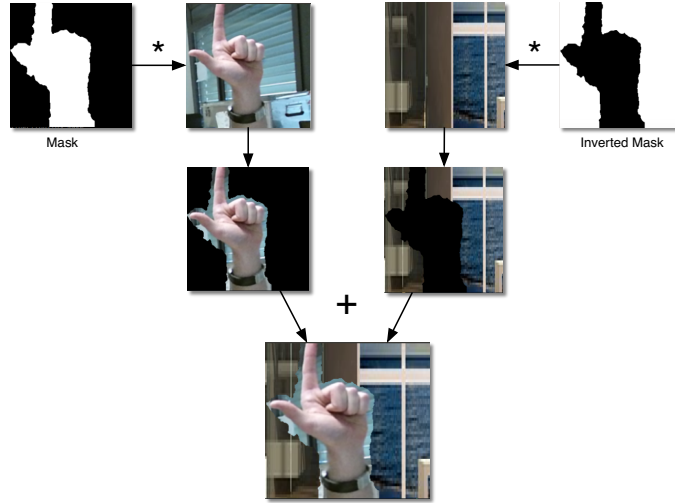


Figure 5: The process of background substitution.

This binary mask is broadcasted into three channels and then multiplied by the cropped RGB hand image to get a background subtracted hand. An inverted mask is also created by simply applying a “NOT” operation on the mask originally computed. The background pattern images are cropped to multiple
 465 224×224 sized images (as it is the set size of hand images) which are subsequently multiplied by the inverted hand mask. The hand image with subtracted background and the pattern images multiplied with the inverted binary mask are then added in the final step of background substitution. Figure 6 shows the samples of gestures with original and substituted backgrounds. As discussed in
 470 Section 5.1, all the training images (images with substituted and original backgrounds) go through several preprocessing steps. Image processing operations of histogram equalization and introduction of Gaussian and salt and pepper noise are applied on 30% of training images each while the remaining 10% are left
 475 unprocessed. Figure 7 shows random samples of original and processed images after the addition of Gaussian noise and histogram equalization. For robust

gesture detection, we also use the real-time data augmentation feature of Keras library.



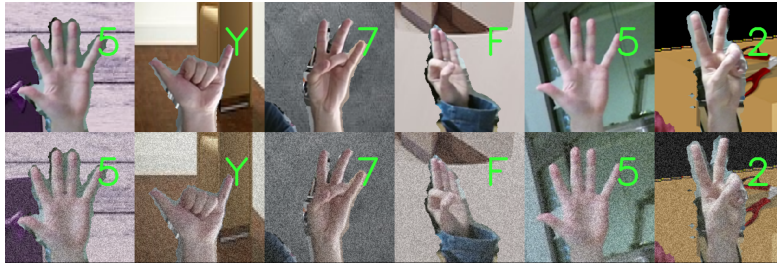
Figure 6: Samples of hand gesture images with original (labeled images) and substituted backgrounds (below originals). Note the remnants of the original backgrounds. This phenomenon is due to dilation of the binary masks. While it could be avoided by using techniques like chroma key, we do not intend to use a uniform background, to avoid bringing any extra apparatus in operation. In the experimental results (Sect. 5.4), we show that despite these remnants, gesture detection is highly accurate.

480 Keras real-time data augmentation is designed to be iterated by the model fitting process, creating augmented image data in defined batch size during training. This reduces the memory overhead of the computer but adds additional time cost during model training. The image processing operations that

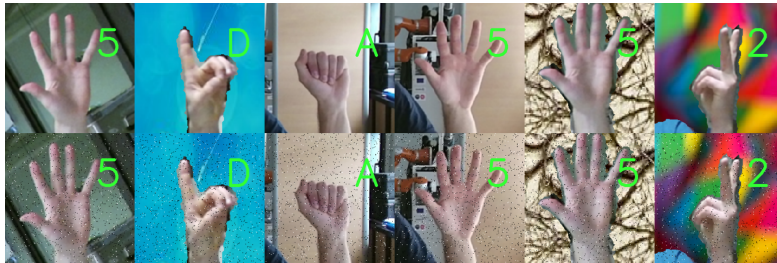
are applied on all training images (after the addition of noise and histogram equalization as discussed above) using the Keras library include channel shift, zoom, shearing, rotation, axes flip and position shift.



(a) Samples of training images after histogram equalization



(b) Samples of training images after the introduction of Gaussian noise



(c) Samples of training images after the introduction of salt and pepper noise.

Figure 7: Image processing operations of histogram equalization, introduction of Gaussian and salt and pepper noise are performed on the training images. First row in each sub-image shows unprocessed image while the processed images are shown in the second rows.

The batch size for model fitting is set to 100 training images. These transformations are applied in real-time during model training. So the number of train images remains the same while each batch for training is applied with selected

– yet randomly chosen – transforms. In Fig. 8, we show samples of processed
490 training images with Keras being passed to the CNN.



Figure 8: Image processing operations applied to the training images include color-shift, zoom, shear, rotation, axes flip and position shift processes.

5.3. Adapting Inception V3 to gesture recognition

In image classification problems, the input data i.e., an image, is formed by low-level edges, curves and color combinations irrespective of the type of object that the image represents. It is therefore assumed that the early layers
495 in the pre-trained state-of-the-art networks have learned to efficiently extract those features from the images thus they need to be preserved. Inception V3 is trained to recognize 1000 classes of objects as explained in Section 5. To adapt Inception V3 to classify only 10 gestures, the last softmax activation layer of this network with 1000 neurons should be replaced with a new layer of 10 neurons.
500 As implemented in Keras, the Inception V3 has 10 trainable inception blocks. We perform training in three phases. In the first phase all the layers (hence inception blocks) in the network are frozen with the exception of the new layer added and the CNN is trained for 10 epochs only. This fine-tune the weights of the new layer exploiting the knowledge of all pre-trained inception blocks. Then
505 we unfreeze last two inception blocks and trained the CNN for 10 epochs, and then we trained top four inception blocks so the network is fine-tuned properly

on our dataset. This gradual unfreezing of inception blocks prevents damaging the pre-trained weights and thus avert over-fitting.

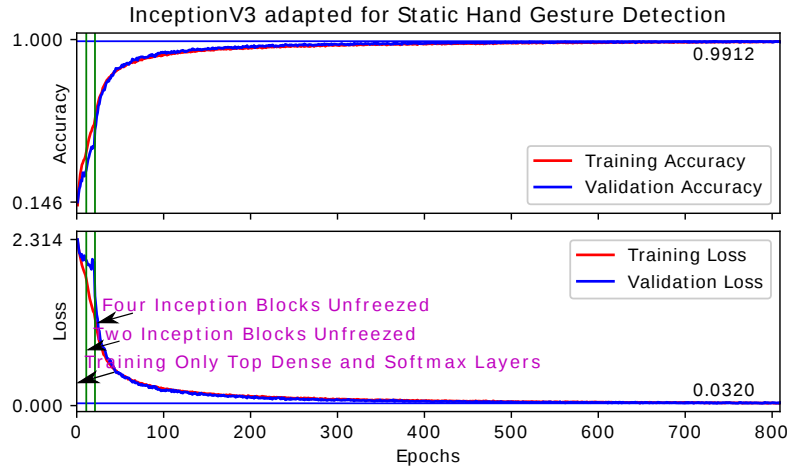


Figure 9: Plot of validation accuracy (top) and validation loss (bottom)

The validation set is used to chose the best performing weights and then the
 510 network is tested on the unseen test set to quantify/estimate the accuracy of the
 selected weights. Figure 9 illustrates the training curve of validation accuracy
 and loss of our dataset. Each epoch took approximately 130 seconds to pass and
 the network was able to achieve validation accuracy of 99.12% at 745th epoch
 taking around 27 hours of training.

515 5.4. Quantification of the Trained CNN

To validate and quantify the results even further, the accuracy of the trained
 CNN is tested with a test set of 4190 new images. The overall test accuracy of
 the trained CNN is found to be 98.9% on test set. The normalized confusion
 matrix in Fig. 10 shows the accuracy of each gestures and misinterpretation of
 520 one gesture against the others. It can be observed that despite 94.3% accuracy
 of the **None** gesture, it was misinterpreted the most among all. The reason for
 this lower accuracy is that the **None** gesture defines all gestures that do not
 appear like the other 9 as well as all transitional gestures.

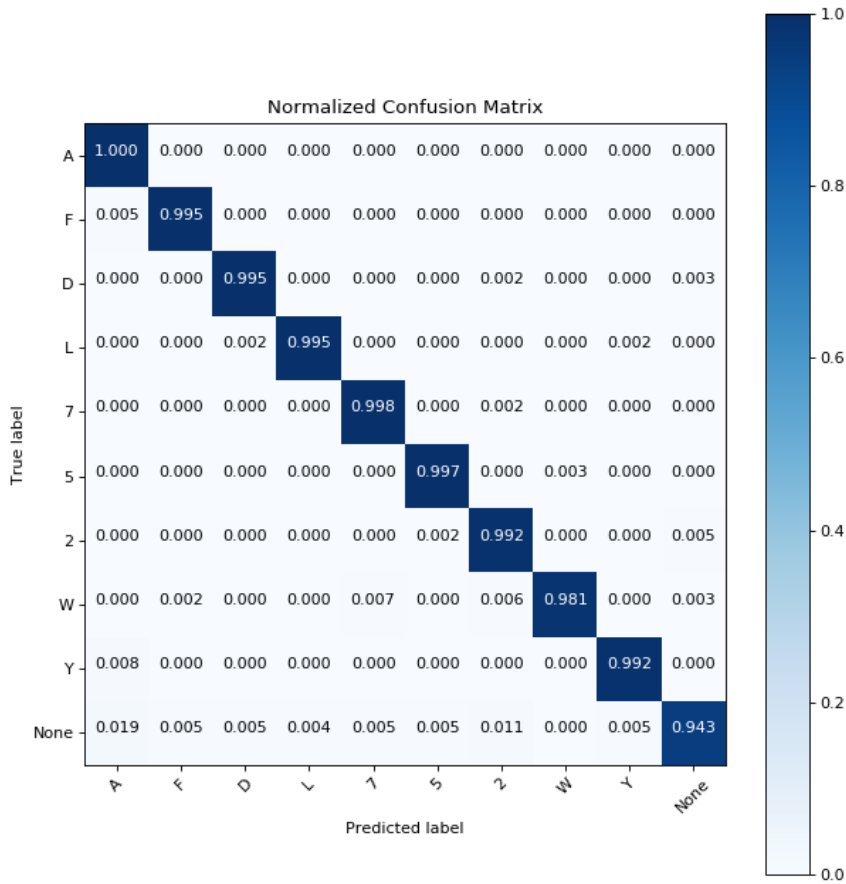


Figure 10: Normalized Confusion Matrix Quantified on Test-Set

It is difficult to include all the transitional gesture possible to be classified
 525 as **None** gesture. Moreover, it can be observed from a close inspection of the
 test results that the CNN is very accurate in identifying a gesture as **None**
 when a person is holding an object in his hand. It is inferred that if the CNN is
 additionally trained on a gesture like "an object in hand", this gesture will be
 easily distinguished. Meanwhile, this misinterpretation can be dealt by adding
 530 a software constraint, as explained in Section 5, of not invoking gesture detector
 until the arm is in the upper two quadrants of the axes centered at the elbow
 joint of the person, as we did in [55]. We release the source code of our hand

gesture detection

6. OpenPHRI Integration

535 To control the robot and to remain safe during human-robot collaboration,
we have used OpenPHRI open-source control library. This library allows to
describe the task to perform using force and velocity inputs in both the joint
and task spaces while enforcing safety constraints such as velocity limitations,
speed and separation monitoring or safety-rated monitored stops.

540 As discussed in Section 2.1, ISO 10218-1/2 and ISO/TS 15066 have imposed
safety requirements for industrial robot systems. Moreover, these ISO standards
have identified four collaborative modes which are briefly explained as follows:

- *Safety-rated monitored stop* - This states that the human and robot can
operate in a shared space but not at the same time. As soon as the human
545 operator occupies the shared space, the robot must stop until the human
exits the shared space.
- *Hand guiding* - In this mode, the human coworker can teach the robot
positions/waypoints by physically moving the robot without any means
of an intermediate interface.
- 550 • *Speed and separation monitoring* - This defines three zones of the shared
space say red, yellow and green. The operation of robot depends on the
presence of human in each zone. If human coworker is in the green zone
the robot operates at its full speed, at reduced speed in yellow zone and
it should stop in the red zone.
- 555 • *Power and force limiting* - This mode prescribes the limitation of power
and force to allow humans to work side-by-side with the robot. The robot
should be able to handle collisions with the human to prevent any harmful
consequences.

OpenPHRI inherently is able to adopt all four collaborative modes efficiently.
560 The first and the third modes however, require safety-rated monitoring sensors.
As described in the previous sections, our proposed framework obtains a pseudo
3D human skeleton, which is used to determine the distance of the closest body
part of the human coworker to the robot. This is integrated with OpenPHRI
to complement the two collaborative modes.

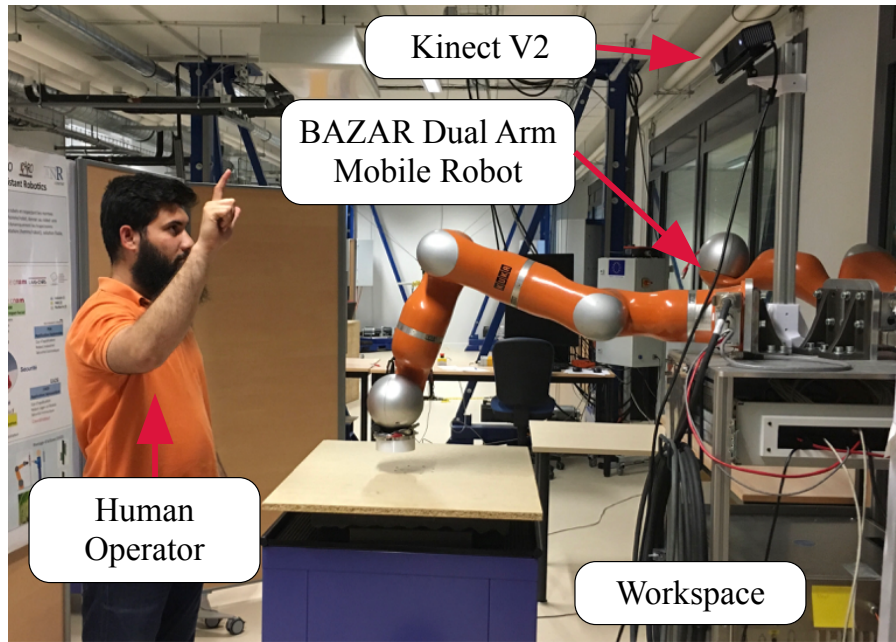


Figure 11: Safe Physical Human Robot Interaction Setup

565 7. Example Industrial Application of The Proposed Framework

To demonstrate the effectiveness of the proposed approach, we set up
an industrial-like experiment where multiple operators can safely interact se-
quentially with the robot using both hand gestures and physical contact. The
experiment is decomposed into two phases: 1) a teaching by demonstration
570 phase, where the user manually guides the robot to a set of waypoints and 2)
a replay phase, where the robot autonomously goes to every recorded waypoint

to perform a given task, here force control.

BAZAR robot used for the experiments is composed of two Kuka LWR 4+ arms with two Shadow Dexterous Hands attached at the end-effectors and a Kinect V2 mounted on top of it [67]. The arms are attached to a Neobotix MP700 omnidirectional mobile platform. In our scenario, shown in Figure 11 the mobile base is kept fixed and only the left arm, without the hand, is used. The communication with the embedded arm controller is done using the FRI library ⁵. The external force applied to the arm’s end-effector is estimated by the embedded controller (based on joint torque sensing and on knowledge of the robot’s dynamic model) and retrieved by FRI. The control rate is set to 5ms.

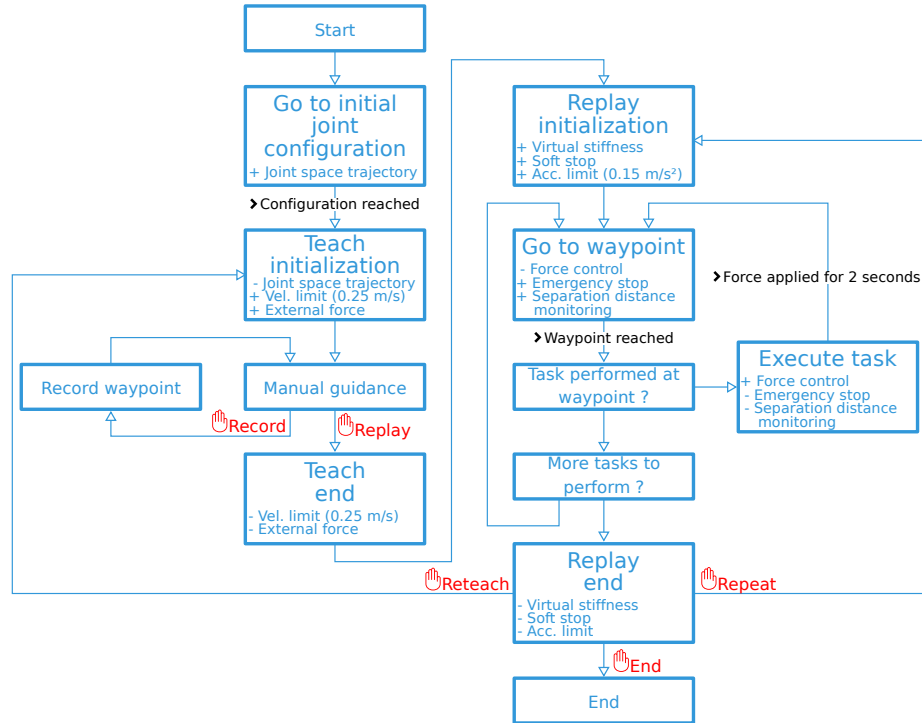


Figure 12: The FSM used for the experiment. A plus sign indicates an addition to the controller (a new constraint or new input) while a minus indicates a removal.

⁵<https://cs.stanford.edu/people/tkr/fri/html/>

To orchestrate the experiment, we have designed a finite state machine (FSM), depicted in Figure 12. The transitions between the states are either automatic (no text), depending on sensory information (arrow with text) or triggered by gestures (hand sign with text).



Figure 13: Screenshots from the robotic experiment by operators Op1 and Op2 (a) Op1 manually guiding the robot to a waypoint in the workspace. (b) Op1 records the way-points using Record gesture. (c) Op1 replay the taught waypoints by Replay gesture. (d) Op2 stands far from the robot so it moves with full speed. (e) Op2 stops the robot by applying external force (or accidental touch). (f) Op2 stands near the robot, so it moves slowly ensuring operator's safety. (g) Op2 gives Reteach command to the robot. (h) Op2 sets the new waypoints manually. (i) Op2 gives Record command. (j) Op2 stops the robot by Stop gesture. (k) Op2 resumes the robot operation by Resume gesture. (l) Op1 ends the robot operation by giving End command.

A video of the experiment is available online⁶ and snapshots are given in Figure 13. The experiment goes as follow. First, the robot goes to a predefined

⁶<https://www.youtube.com/watch?v=1B5vXc8LMnk>

initial joint configuration before initializing the *Teach* phase. Once this initial-
ization is performed, the robot is ready to be manually guided and taught the
590 waypoints where the tasks have to be performed during the *Replay* phase.

Each time a **Record** gesture (L letter sign) is detected, the current end-
effector pose is recorded. When a **Replay** gesture (A letter sign) comes in, the
Teach phase is ended and the *Replay* phase is initialized. Then, the robot goes
to the first recorded waypoint while limiting its velocity thus ensuring safety of
595 the human worker (speed and separation monitoring in the FSM) according to
the distance of the closest detected body part. This distance corresponds to the
depth value given by Kinect V2 at the joint image coordinates obtained from
OpenPose as explained in Section 4.3. If the closest body part is occluded by
the robotic arm, the depth value (that will then correspond to the depth value
600 of the robot itself) is discarded while the next closest body part visible in the
scene is considered a reference for depth.

This estimation of body parts distance is not available with the default
output of OpenPose but it is possible, thanks to our integration, of Kinect
V2 depth map. This amplifies the usefulness of OpenPose skeleton extraction
605 while assuring a safe interaction of a human coworker with the robot. While in
autonomous motion, the robot can be stopped at any time (Soft Stop constraint
in the FSM) using a **Stop** gesture (number 5 sign). Making this gesture will slow
down the robot until a full stop is reached. This is useful if an operator must
enter the robot workspace without fearing any injury. The **Resume** gesture
610 (Y letter sign) can be made to resume normal operation. When the robot
reaches the waypoint, it switches to the task execution. In this scenario the
task is to apply a 30N force for 2s along the vertical axis. Once the task has
been executed, the robot goes back to its waypoint and moves to the next
ones to repeat the same operations. If the task has been performed at all the
615 waypoints, the *Replay* phase ends and the next action is determined by the
operator. A **Reteach** gesture (number 7 sign) will move the FSM to the *Teach*
phase while a **Repeat** gesture (F letter sign) will repeat all the tasks at the
recorded waypoints. If no other operation is needed, an **End** gesture (number

2 sign) will end the experiment.

620 Experimental results are show in Fig. 14. The time axis has been limited to the 132-185s range for better readability. The top graph displays the result of the hand gesture detection where each vertical dashed line corresponds to the detection of a gesture. To filter out false positives, a gesture is considered valid if it appears in five consecutive frames.

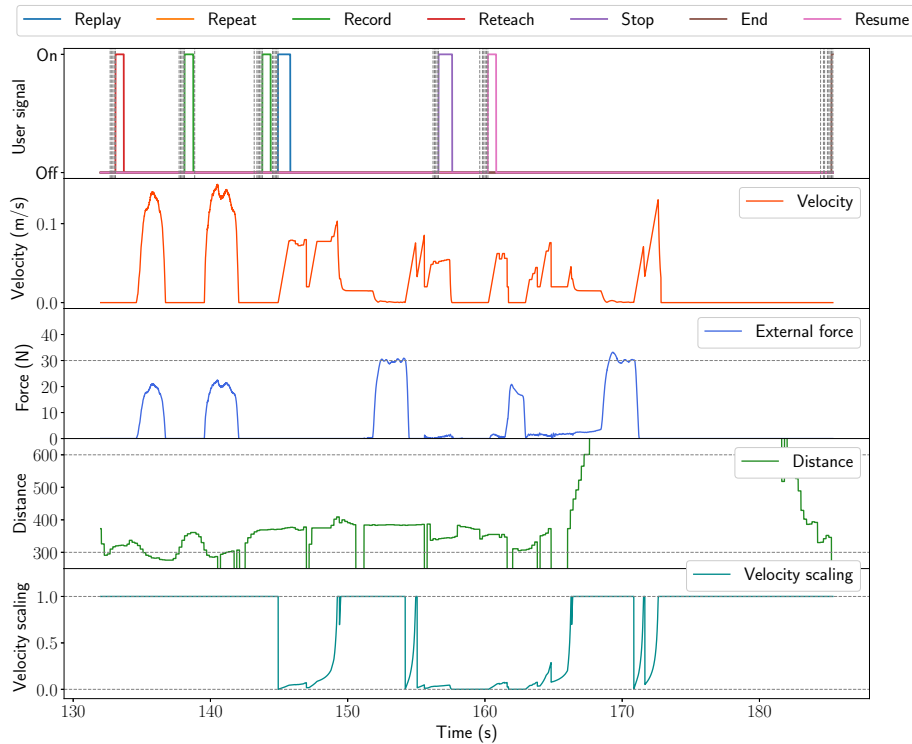


Figure 14: Experimental results. From top to bottom: hand gesture detection (dashed lines correspond to detection instants and plain line to the activation signals), control point translational velocity, external force at the end-effector, distance between the camera and the closest human body part and velocity scaling factor computed by OpenPHRI to slow down the motion.

625 Considering the hand-gesture detection frame rate of 20Hz, this gives a 250ms delay between the making of the gesture and its detection. This delay should not impact human-robot interaction since the average human reaction

time usually lies within the 200-250ms range⁷. Once the same gesture has been detected five times in a row, the corresponding signal is activated. False positives can be observed, e.g. at $t=139$ s when the first record signal ends, but thanks to the filtering systems no incorrect signal activation is made. The two following graphs in Fig. 14 show the end-effector translational velocity and force. It can be seen that through the *Teach* phase, i.e. until $t=135$ s, the velocity simply follows the force applied to the robot. Then, the *Replay* phase starts and the end-effector velocity is now the result of the motion made to reach the waypoints and also by the force regulation applied at these locations. Between the two task executions ($t=153$ s and $t=170$ s), one can observe some force applied to the robot at $t=162$ s. A safety feature is programmed to prevent accidents due to unexpected contact between the operator and the robot, leading to a monitored stop. In this situation, the robot stays still until the contact disappear and then resumes its motion to the second waypoints. The fourth graph displays the distance to the closest body part. The values are the raw ones provided by the Kinect V2 and are unitless. As mentioned previously, this distance is used to adapt the velocity limitation so that the robot can move quickly when nobody is around but slows down when an operator is approaching. The velocity limit is at a minimum of $0.02m/s$ at a distance of 300 and at a maximum of $0.3m/s$ at a distance of 600. The effect of this limitation can be observed multiple times, including after the beginning of the *Replay* phase where the distance suddenly drops below 300, enforcing a very slow motion of the robot. The last graph shows the evolution of the scaling factor computed by OpenPHRI. A value equals to one means that no velocity reduction has to be performed to comply with the constraints (velocity and acceleration limits, speed and separation monitoring and safety-rated monitored or soft stop). When at least one constraint would not be respected considering the current inputs, the scaling factor decreases below one to make sure that all constraints are satisfied. When the value reaches zero, the robot is at a complete stop. Using this technique

⁷<http://humanbenchmark.com/tests/reactiontime>

allows to easily slow down the robot only when it is necessary.

8. Conclusion

In the perspective of smart factories – also known as factories of the future
660 – we have introduced a real-time human-robot interaction framework for robot
teaching using hand gestures. The proposed framework relies on our novel ro-
tation and background invariant robust hand gesture detector. This is achieved
by adapting a pre-trained state-of-the-art convolutional neural network, namely
Inception V3, to the classification of 10 hand gestures. The CNN is trained on
665 an image dataset of 10 hand gestures, recorded with the help of 10 volunteers.
The dataset OpenSign, is open and available to the computer vision commu-
nity for benchmarking. We also release the source code of our hand gesture
detector⁸.

The accuracy of the trained CNN is validated with a set of test images and
670 is found to be 98.9%. To reaffirm the quality of the hand gesture detector
and to validate it on a mock-up example industrial scenario, we perform a
robotic experiment. Safety and effectiveness of the experiment are guaranteed
by our physical human-robot interaction library, OpenPHRI. Besides, real-time
operation is established by asynchronous integration of the different modules
675 present in our framework. The experiment proves the efficiency of the proposed
framework, that ensures a natural means for robot programming. The robot
is also aware of its distance from the human worker thanks to the integration
of Kinect V2 and OpenPose. To guarantee the safety of the human coworker
in close vicinity, the robot slows down using the velocity scaling feature of
680 OpenPHRI.

Our approach requires the user to know the gestures the robot can perceive.
However, once s/he has memorized these gestures, it will be more natural for
her/him to communicate with the robot. Integrating face identification algo-

⁸<https://github.com/OsamaMazhar/openhandgesture>

rithms in this framework, could also be a security feature. It will allow only
685 selected people to interact with the robot without entering any passwords or
fingerprints scanning which might require the users to come in close proximity
to the robot.

Despite the quantified accuracy and experimental results, the capabilities of
our system are limited by the depth range of the vision sensor. Moreover, the
690 system is trained and tested in indoor settings and may fail in bright light due
to the resulting contrast in RGB images. Backgrounds with intense texture may
also compromise detection. To handle this, distinct background images should
be substituted in the hand images to train the proposed network. Neverthe-
less, we believe that the preliminary results presented in this paper are a very
695 promising step towards the development of vision-based robot programming.
We encourage researchers interested in these topics to profit from our open im-
age dataset for benchmarking their algorithms, and to enrich the dataset with
more images.

9. Acknowledgements

700 Osama Mazhar’s PhD is sponsored by a French public scholarship from the
Doctoral School of Université de Montpellier.

References

- [1] D. Gorecky, M. Schmitt, M. Loskyll, D. Zühlke, Human-machine-
interaction in the industry 4.0 era, in: *IEEE Int. Conf. on Industrial Informatics*, 2014, pp. 289–294.
705
- [2] B. Gleeson, K. MacLean, A. Haddadi, E. Croft, J. Alcazar, Gestures for
Industry: Intuitive Human-Robot Communication from Human Observa-
tion, in: *Proceedings of the 8th ACM/IEEE Int. Conf. on Human-robot
Interaction*, IEEE Press, Piscataway, NJ, USA, 2013, pp. 349–356.

- 710 [3] A. Cherubini, R. Passama, A. Crosnier, A. Lasnier, P. Fraise, Collaborative manufacturing with physical human–robot interaction, *Robotics and Computer-Integrated Manufacturing* Vol. 40 (2016) pp. 1–13.
- [4] C. Schlenoff, Z. Kootbally, A. Pietromartire, M. Franaszek, S. Foufou, Intention recognition in manufacturing applications, *Robotics and Computer-*
715 *Integrated Manufacturing* Vol. 33 (2015) pp. 29–41.
- [5] I. Maurtua, A. Ibarguren, J. Kildal, L. Susperregi, B. Sierra, Human-robot collaboration in industrial applications: Safety, interaction and trust, *Int. Journal of Advanced Robotic Systems* Vol. 14 (2017).
- [6] S. S. Rautaray, A. Agrawal, Vision based hand gesture recognition for hu-
720 *man computer interaction: A survey*, *Artificial Intelligence Review* Vol. 43 (2015) pp. 1–54.
- [7] P. Neto, J. N. Pires, A. P. Moreira, High-level programming and control for industrial robotics: using a hand-held accelerometer-based input device for gesture and posture recognition, *Industrial Robot* Vol. 37 (2010) pp
725 137–147.
- [8] V. Villani, F. Pini, F. Leali, C. Secchi, Survey on human–robot collaboration in industrial settings: Safety, intuitive interfaces and applications, *Mechatronics* Vol. 55 (2018) pp. 248 – 266.
- [9] P. Neto, D. Pereira, J. N. Pires, A. P. Moreira, Gesture Recognition
730 *for Human-Robot Collaboration: A Review*, in: *Proceedings of the 7th Swedish Production Symposium*, 2016, pp. 1–12.
- [10] J. Ruiz-del-Solar, P. Loncomilla, N. Soto, A Survey on Deep Learning Methods for Robot Vision, *arXiv* (2018) arxiv:1803.10862.
- [11] R. Yang, S. Sarkar, B. Loeding, Handling movement epenthesis and hand
735 *segmentation ambiguities in continuous sign language recognition using nested dynamic programming*, *IEEE Transactions on Pattern Analysis and Machine Intelligence* Vol. 32 (2010) pp. 462–477.

- [12] B. Navarro, A. Fonte, P. Fraisse, G. Poisson, A. Cherubini, In Pursuit of Safety: An Open-Source Library for Physical Human-Robot Interaction, *IEEE Robotics Automation Magazine* Vol. 25 (2018) pp. 39–50.
- [13] A. De Luca, F. Flacco, Integrated control for phri: Collision avoidance, detection, reaction and collaboration, in: 4th IEEE RAS & EMBS Int. Conf. on Biomedical Robotics and Biomechatronics, IEEE, 2012, pp. pp. 288–295.
- [14] ISO 10218-1:2011 - Robots and robotic devices - Safety requirements for industrial robots - Part 1: Robots. ISO; 2011.
- [15] ISO 10218-2:2011 - Robots and robotic devices - Safety requirements for industrial robots - Part 2: Robot systems and integration. ISO; 2011.
- [16] ISO/TS 15066:2016 - Robots and robotic devices - Safety requirements for collaborative industrial robot systems and the work environment: Collaborative robots. ISO/TS; 2016.
- [17] A. Levratti, G. Riggio, A. De Vuono, C. Fantuzzi, C. Secchi, Safe navigation and experimental evaluation of a novel tire workshop assistant robot, in: IEEE Int. Conf. on Robotics and Automation, 2017, pp. 994–999.
- [18] L. Sabattini, A. Levratti, F. Venturi, E. Amplo, C. Fantuzzi, C. Secchi, Experimental comparison of 3D vision sensors for mobile robot localization for industrial application: Stereo-camera and RGB-D sensor, in: 12th IEEE Int. Conf. on Control Automation Robotics Vision, 2012, pp. 823–828.
- [19] J. A. Marvel, R. Norcross, Implementing speed and separation monitoring in collaborative robot workcells, *Robotics and Computer-Integrated Manufacturing* Vol. 44 (2017) pp. 144–155.
- [20] V. Rampa, F. Vicentini, S. Savazzi, N. Pedrocchi, M. Ioppolo, M. Giussani, Safe human-robot cooperation through sensor-less radio localization, in: 12th IEEE Int. Conf. on Industrial Informatics, 2014, pp. 683–689.

- 765 [21] F. Vicentini, M. Ruggeri, L. Dariz, A. Pecora, L. Maiolo, D. Polese, L. Pazzini, L. M. Tosatti, Wireless sensor networks and safe protocols for user tracking in human-robot cooperative workspaces, in: 23rd IEEE Int. Sym. on Industrial Electronics, 2014, pp. 1274–1279.
- [22] F. Vicentini, M. Giussani, L. M. Tosatti, Trajectory-dependent safe distances in human-robot interaction, in: Emerging Technology and Factory
770 Automation, IEEE, 2014, pp. 1–4.
- [23] P. A. Lasota, G. F. Rossano, J. A. Shah, Toward safe close-proximity human-robot interaction with standard industrial robots.
- [24] C. Morato, K. N. Kaipa, B. Zhao, S. K. Gupta, Toward safe human robot
775 collaboration by using multiple kinects based real-time human tracking, Journal of Computing and Information Science in Engineering Vol. 14.
- [25] S. Makris, P. Tsarouchi, D. Surdilovic, J. Krüger, Intuitive dual arm robot programming for assembly operations, CIRP Annals, Manufacturing Technology Vol. 63 (2014) pp. 13–16.
- 780 [26] Z. Zhang, Microsoft Kinect Sensor and Its Effect, IEEE MultiMedia Vol. 19 (2012) pp. 4–10.
- [27] Y. Yang, H. Yan, M. Dehghan, M. H. Ang, Real-time human-robot interaction in complex environment using kinect v2 image recognition, in: IEEE Int. Conf. on Cybernetics and Intelligent Systems and IEEE Conf. on Robotics, Automation and Mechatronics, 2015, pp. 112–117.
785
- [28] M. G. Carmichael, D. Liu, A. Tran, R. Khonasty, S. Aldini, Robot Co-worker for Abrasive Blasting: Lessons Learnt in Worker Posture Estimation, in: IEEE Int. Conf. on Robotics and Automation, 2018.
- [29] J. Sell, P. O’Connor, The Xbox One System on a Chip and Kinect Sensor,
790 IEEE Micro Vol. 34 (2014) pp. 44–53.

- [30] L. Keselman, J. I. Woodfill, A. Grunnet-Jepsen, A. Bhowmik, Intel(R) RealSense(TM) Stereoscopic Depth Cameras, in: IEEE Conf. on Computer Vision and Pattern Recognition Workshops, 2017, pp. 1267–1276.
- [31] G. Du, P. Zhang, Markerless human–robot interface for dual robot manipulators using kinect sensor, Robotics and Computer-Integrated Manufacturing Vol. 30 (2014) pp. 150–159.
- [32] G. Du, M. Chen, C. Liu, B. Zhang, P. Zhang, Online Robot Teaching with Natural Human-robot Interaction, IEEE Transactions on Industrial Electronics, 2018.
- [33] E. Matsas, G.-C. Vosniakos, Design of a virtual reality training system for human–robot collaboration in manufacturing tasks, International Journal on Interactive Design and Manufacturing Vol. 11 (2017) pp. 139–153.
- [34] E. Matsas, G.-C. Vosniakos, D. Batras, Prototyping proactive and adaptive techniques for human-robot collaboration in manufacturing using virtual reality, Robotics and Computer-Integrated Manufacturing Vol. 50 (2018) pp. 168–180.
- [35] M. Simão, P. Neto, O. Gibaru, Natural control of an industrial robot using hand gesture recognition with neural networks, in: 42nd Annual Conf. of the IEEE Industrial Electronics Society, 2016, pp. 5322–5327.
- [36] G. Canal, S. Escalera, C. Angulo, A real-time human-robot interaction system based on gestures for assistive scenarios, Computer Vision and Image Understanding Vol. 149 (2016) pp. 65–77.
- [37] J. L. Raheja, M. Chandra, A. Chaudhary, 3D Gesture based Real-time Object Selection and Recognition, Pattern Recognition Letters, 2017.
- [38] Y. LeCun, F. J. Huang, L. Bottou, Learning methods for generic object recognition with invariance to pose and lighting, in: IEEE Computer Society Conf. on Computer Vision and Pattern Recognition, Vol. 2, 2004, pp. 97–104.

- [39] K. Ehlers, K. Brama, A human-robot interaction interface for mobile and stationary robots based on real-time 3D human body and hand-finger pose estimation, in: IEEE Int. Conf. on Emerging Technologies and Factory Automation, 2016, pp. 1–6.
- [40] T. Starner, J. Weaver, A. Pentland, Real-time american sign language recognition using desk and wearable computer based video, IEEE Transactions on pattern analysis and machine intelligence Vol. 20 (1998) pp. 1371–1375.
- [41] P. Neto, D. Pereira, J. N. Pires, A. P. Moreira, Real-time and continuous hand gesture spotting: An approach based on artificial neural networks, in: IEEE Int. Conf. on Robotics and Automation, 2013, pp. 178–183.
- [42] Q. Munib, M. Habeeb, B. Takruri, H. A. Al-Malik, American sign language (ASL) recognition based on Hough transform and neural networks, Expert systems with Applications Vol. 32 (2007) pp. 24–37.
- [43] C. Charayaphan, A. Marble, Image processing system for interpreting motion in American Sign Language, Medical Engineering and Physics Vol. 14 (1992) pp. 419–425.
- [44] D. H. Ballard, Generalizing the Hough transform to detect arbitrary shapes, Pattern recognition Vol. 13 (1981) pp. 111–122.
- [45] A. Joshi, H. Sierra, E. Arzuaga, American sign language translation using edge detection and cross correlation, in: IEEE Colombian Conf. on Communications and Computing (COLCOM), 2017, pp. 1–6.
- [46] P. Xu, A Real-time Hand Gesture Recognition and Human-Computer Interaction System, arXiv (2017) arxiv:1704.07296.
- [47] Y. LeCun, L. Bottou, Y. Bengio, P. Haffner, Gradient-based learning applied to document recognition, Proceedings of the IEEE Vol. 86 (1998) pp. 2278–2324.

- [48] K. He, X. Zhang, S. Ren, J. Sun, Deep Residual Learning for Image Recognition, in: IEEE Conf. on Computer Vision and Pattern Recognition, 2016.
- [49] H. Cheng, L. Yang, Z. Liu, Survey on 3D Hand Gesture Recognition., IEEE Trans. Circuits Syst. Video Techn. Vol. 26 (2016) pp. 1659–1673.
- 850 [50] M. Van den Bergh, L. Van Gool, Combining RGB and ToF cameras for real-time 3D hand gesture interaction, in: IEEE Workshop on Applications of Computer Vision (WACV), 2011, pp. 66–72.
- [51] I. Oikonomidis, N. Kyriazis, A. A. Argyros, Markerless and efficient 26-DOF hand pose recovery, in: Asian Conf. on Computer Vision, Springer, 2010, pp. 744–757.
- 855 [52] S.-E. Wei, V. Ramakrishna, T. Kanade, Y. Sheikh, Convolutional Pose Machines, in: IEEE Conf. on Computer Vision and Pattern Recognition, 2016.
- [53] Z. Cao, T. Simon, S.-E. Wei, Y. Sheikh, Realtime Multi-Person 2D Pose Estimation using Part Affinity Fields, in: IEEE Conf. on Computer Vision and Pattern Recognition, 2017.
- 860 [54] P. Panteleris, I. Oikonomidis, A. A. Argyros, Using a Single RGB Frame for Real Time 3D Hand Pose Estimation in the Wild, in: IEEE Winter Conf. on Applications of Computer Vision, IEEE, 2018, pp. 436–445.
- 865 [55] O. Mazhar, S. Ramdani, B. Navarro, R. Passama, A. Cherubini, Towards Real-time Physical Human-Robot Interaction using Skeleton Information and Hand Gestures, in: IEEE/RSJ Int. Conf. on Intelligent Robots and Systems, 2018.
- [56] S. Das, M. Koperski, F. Bremond, G. Francesca, Action recognition based on a mixture of RGB and depth based skeleton, in: 14th IEEE Int. Conf. on Advanced Video and Signal Based Surveillance, 2017, pp. 1–6.
- 870

- [57] C. Zimmermann, T. Welschehold, C. Dornhege, T. Brox, W. Burgard, 3D Human Pose Estimation in RGBD Images for Robotic Task Learning, in: IEEE Int. Conf. on Robotics and Automation, 2018.
- 875 [58] T.-Y. Lin, M. Maire, S. Belongie, J. Hays, P. Perona, D. Ramanan, P. Dollár, C. L. Zitnick, Microsoft COCO: Common Objects in Context, in: D. Fleet, T. Pajdla, B. Schiele, T. Tuytelaars (Eds.), Computer Vision – ECCV 2014, Springer International Publishing, Cham, 2014, pp. 740–755.
- [59] R. C. Luo, Y. C. Wu, Hand Gesture Recognition for Human-Robot Interaction for Service Robot, in: IEEE Int. Conf. on Multisensor Fusion and
880 Integration for Intelligent Systems, 2012, pp. 318–323.
- [60] M. V. den Bergh, D. Carton, R. D. Nijs, N. Mitsou, C. Landsiedel, K. Kuehnlentz, D. Wollherr, L. V. Gool, M. Buss, Real-time 3D Hand Gesture Interaction with a Robot for Understanding Directions from Humans,
885 in: RO-MAN, 2011, pp. 357–362.
- [61] G. Cicirelli, C. Attolico, C. Guaragnella, T. D’Orazio, A Kinect-based Gesture Recognition Approach for a Natural Human Robot Interface, Int. Journal of Advanced Robotic Systems Vol. 12 (2015) pp. 22.
- [62] M. Munaro, F. Basso, E. Menegatti, Tracking people within groups with
890 RGB-D data, IEEE/RSJ Int. Conf. on Intelligent Robots and Systems (2012) pp. 2101–2107.
- [63] O. Russakovsky, J. Deng, H. Su, J. Krause, S. Satheesh, S. Ma, Z. Huang, A. Karpathy, A. Khosla, M. Bernstein, A. C. Berg, L. Fei-Fei, ImageNet Large Scale Visual Recognition Challenge, Int. Journal of Computer Vision
895 Vol. 115 (2015) pp. 211–252.
- [64] C. Szegedy, V. Vanhoucke, S. Ioffe, J. Shlens, Z. Wojna, Rethinking the inception architecture for computer vision, in: Proceedings of the IEEE Conf. on Computer Vision and Pattern Recognition, 2016, pp. 2818–2826.

- [65] F. Chollet, et al., Keras, <https://keras.io> (2015).
- 900 [66] R. Battison, Lexical Borrowing in American Sign Language.
- [67] A. Cherubini, R. Passama, B. Navarro, M. Sorour, A. Khelloufi, O. Mazhar, S. Tarbouriech, J. Zhu, O. Tempier, A. Crosnier, P. Fraisse, S. Ramdani, A Collaborative Robot for the Factory of the Future: BAZAR, Int. Journal of Advanced Manufacturing Technology, Special Issue "Design and Management of Digital Manufacturing & Assembly Systems in the Industry 4.0 era, 2019 (to appear).
- 905