



HAL
open science

Density estimation for RWRE

Antoine Havet, Matthieu Lerasle, Éric Moulines

► **To cite this version:**

Antoine Havet, Matthieu Lerasle, Éric Moulines. Density estimation for RWRE. *Mathematical Methods of Statistics*, 2019, 10.3103/S1066530719010022 . hal-01815990

HAL Id: hal-01815990

<https://hal.science/hal-01815990>

Submitted on 14 Jun 2018

HAL is a multi-disciplinary open access archive for the deposit and dissemination of scientific research documents, whether they are published or not. The documents may come from teaching and research institutions in France or abroad, or from public or private research centers.

L'archive ouverte pluridisciplinaire **HAL**, est destinée au dépôt et à la diffusion de documents scientifiques de niveau recherche, publiés ou non, émanant des établissements d'enseignement et de recherche français ou étrangers, des laboratoires publics ou privés.

DENSITY ESTIMATION FOR RWRE

A. HAVET

Centre de Mathématiques Appliquées, École polytechnique, CNRS Université Paris-Saclay

M. LERASLE

Laboratoire de Mathématiques d'Orsay, Univ. Paris-Sud, CNRS, Université Paris Saclay

ÉRIC MOULINES

Centre de Mathématiques Appliquées, École polytechnique, CNRS Université Paris-Saclay

ABSTRACT. We consider the problem of non-parametric density estimation of a random environment from the observation of a single trajectory of a random walk in this environment. We first construct a density estimator using the beta-moments. We then show that the Goldenshluger-Lepski method can be used to select the beta-moment. We prove non-asymptotic bounds for the supremum norm of these estimators for both the recurrent and the transient to the right case. A simulation study supports our theoretical findings.

1. INTRODUCTION

A random walk in random environment (RWRE) provides a simple model to describe various problems, for example the propagation of heat, diffusion of matter through a physical medium, or DNA-unzipping experiments. In many situations of practical interest, the medium in which the system evolve is very irregular. In these cases, it is natural to model these irregularities as a random environment. The definition of an RWRE involves two ingredients: (i) the environment, which is an i.i.d. sample of some unknown distribution ν and (ii) the random-walk whose transition probabilities are determined by the environment. This paper considers the problem of recovering the density f of the distribution ν of the environment of a RWRE on \mathbb{Z} based on the observation of a single trajectory of the RWRE.

Since their introduction by Chernov Chernov [1967], RWRE have been widely studied in the probability literature; see for example Zeitouni [2012] for a recent overview of probabilistic results on RWRE in \mathbb{Z} and more generally in \mathbb{Z}^d . On the other hand, statistical inference for RWRE has emerged only recently with the appearance of RWRE in several statistical models such as DNA-unzipping experiments or DNA- polymerase phenomenon Alemany et al. [2012], Baldazzi et al. [2007, 2006], Hugué et al., Koch et al. [2002]. In these applications, the main task is usually to recover the environment itself and, when it is the case, an estimator of ν can be considered as a preliminary step in the construction of a an empirical Bayes estimator.

E-mail addresses: antoine.havet@polytechnique.edu, matthieu.lerasle@polytechnique.edu, eric.moulines@polytechnique.edu.

More precisely, the problem of recovering ν was originally considered in Adelman and Enriquez [2004] who introduced an estimator of the moments of the distribution. The article Adelman and Enriquez [2004] considered random walks in general state spaces but the estimators they deduced had poor statistical performance. More recently, Falconnet et al. [2014b,a], Comets et al. [2014], Comets et al. [2016] considered the random walk on \mathbb{Z} and studied the parametric estimation of ν . More precisely, they proved consistency and asymptotic normality of the maximum likelihood estimator in the ballistic and sub-ballistic regimes as well as its efficiency in the ballistic regime (see Section 2 for details regarding these notions). Some of these consistency results have been extended to i.i.d. environments in recurrent regimes in Comets et al. [2016] for a slightly different estimator and also to Markovian environments in Andreoletti et al. [2015].

It is shown in Comets et al. [2014] and Diel and Lerasle [2018] that the beta-moments of the distribution ν can be estimated consistently from a single trajectory of the RWRE. In Diel and Lerasle [2018], these estimators of moments are used to construct an estimator of the cumulative distribution function (c.d.f.) of the random environment. In this paper, we use these moment estimators to construct estimators of the probability density.

Recovering the probability density of a distribution from its moment is a classical problem in statistics called *moment reconstruction* Akhiezer [1965]. Density estimators of a distribution based on its beta-moments (also referred to as beta-kernel estimators) have already been studied in the classical i.i.d. direct observation setting, where a sample (Z_1, \dots, Z_n) of the unknown distribution is available for the inference (see for example Chen [1999], Bouezmarni and Rolin [2003], Mnatsakanov [2008] and the references therein). In the direct observation setting, Chen, Song Xi [1999] proposed to estimate the density f at a point $x \in [0, 1]$ by a single appropriately chosen β -moment

$$\hat{f}_h(x) = \frac{1}{n} \sum_{i=1}^n \mathbb{B}^{\frac{x}{h}+1, \frac{1-x}{h}+1}(Z_i),$$

where h is the smoothing bandwidth and for any (a, b) in $\mathbb{R}_+^* \times \mathbb{R}_+^*$, $\mathbb{B}^{a,b}$ is the beta function

$$(1) \quad \mathbb{B}^{a,b}(u) = \frac{\Gamma(a+b)}{\Gamma(a)\Gamma(b)} u^{a-1}(1-u)^{b-1} \mathbb{1}_{0 \leq u \leq 1}.$$

Chen [1999] introduced this estimator for a density function on $[0, 1]$ in order to remove the boundary bias of the standard kernel estimator. He proved that this estimator is free of boundary bias. This beta-kernel density estimator has later been shown to be minimax under classical regularity assumptions on the density f by Bertin and Klutchnikoff [2010]. Bertin and Klutchnikoff [2010].

Our contribution is threefold. First, we propose a non-parametric density estimator for the random environment of a RWRE. To our best knowledge, this is the first density estimator of the distribution of the environment. Our proposed methodology follows the same steps than the classical density estimation problem but our construction is not a "kernel" estimator, contrary to the "direct-observation" case. The unknown density f of ν is first approximated at every point $x \in (0, 1)$ by a sequence of properly chosen beta kernels following Chen [1999], Mnatsakanov [2008]. The β -moments are estimated using the methods outlined in Diel and Lerasle [2018]. The proposed density estimator is a function of bandwidth parameter. We propose and analyze a method to choose automatically this bandwidth parameter, based on the Goldenshluger-Lepski algorithm Goldenshluger, A. and Lepski, O. [2008]. This extra step of selection is crucial here to optimize our bound without any prior knowledge of the regime of the walk or the regularity of the unknown density (see Section 4 for details). The Goldenshluger-Lepski method was also used in Bertin and Klutchnikoff [2014] to build

adaptive estimators in the i.i.d. setting based on the minimax estimators of Bertin and Klutchnikoff [2010].

Our second contribution is a derivation of the first non-parametric risk bounds for any density estimator of f based on the observation of a single trajectory of a RWRE. These are exploiting the results recently developed in Diel and Lerasle [2018] for the stochastic part of the risk. We are of course also using some of the results on the beta-kernel estimator presented in Bouezmarni and Rolin [2003], Mnatsakanov [2008], Bertin and Klutchnikoff [2010]. Our rates do not match minimax rates of density estimation in i.i.d. setting. Nevertheless, our results outperform those obtained in Comets et al. [2016] in the recurrent regime where only consistency results for very particular densities were derived. Furthermore, our estimator does not require a prior knowledge on the regime of the walk contrary to that of Comets et al. [2016] - the results in this work presuppose that RWRE is recurrent, which is not required here.

We finally investigate the numerical behaviour of our estimator in a Monte Carlo experiment. It is interesting to notice that our estimator behaves reasonably in ballistic regimes even if the chain has a linear drift. This emphasizes the difference between population and individual parameters estimation problems. It is clear that recovering the environment itself is impossible in the ballistic regime, yet estimating the law of the random environment is still possible. Related results have already been reported in a parametric setting for example in Falconnet et al. [2014b] but it comes perhaps as a surprise that the same behaviour is observed in the non-parametric setting. Both theoretical results and this first simulations consider the case where the chain is observed until it reaches a fixed site n . Depending on the regime, the number of observed steps of the random walk can therefore be very different, it is typically $O(n)$ in the ballistic regime and $e^{O(\sqrt{n})}$ in the recurrent regime. Our simulations also illustrate how the quality of estimation deteriorates when going from nearly recurrent regime to nearly ballistic regime.

The paper is organised as follows. In Section 2, we summarize some basic results on RWRE on \mathbb{Z} and on the likelihood of the observations before defining our basic estimator. In Section 3, we introduce our estimator. In Section 4, we state our main results : convergence rates for the basic estimators and for the Goldenshluger-Lepski estimator derived from these. Section 5 presents Monte Carlo experiment supporting our theoretical claims. Proofs of the main results are gathered in Section 6.

2. RANDOM WALKS IN RANDOM ENVIRONMENT (RWRE)

Denote by $E = (0, 1)^{\mathbb{Z}}$ the *set of environments* endowed with $\mathcal{E} = \mathcal{B}((0, 1)^{\mathbb{Z}})$, the σ -field generated by the cylinders. Denote by $(X_t)_{t \in \mathbb{Z}_+}$ the canonical process of the space $\mathbb{Z}^{\mathbb{Z}_+}$ endowed with the σ -field generated by the cylinders. For $\omega \in E$, we define the random walk in the environment ω as the time-homogeneous Markov chain with transition probabilities given, for all $x, y \in \mathbb{Z}$ by

$$p_\omega(x, y) = \begin{cases} \omega_x & \text{if } y = x + 1 \\ 1 - \omega_x & \text{if } y = x - 1 \\ 0 & \text{otherwise} \end{cases}$$

In all the sequel, it is assumed that the Markov chain is started from 0. That is to say, given the environment ω , the random walk currently at point $x \in \mathbb{Z}$, will make a one-unit step to the right with probability ω_x or to the left with probability $1 - \omega_x$. The probability measure \mathbf{P}_ω that determines the distribution of the random walk in a given environment ω is called the *quenched distribution*.

Here the environment is determined by the sequence of random variables $\omega = (\omega_y)_{y \in \mathbb{Z}}$. In this paper, we assume that the random probabilities $(\omega_x)_{x \in \mathbb{Z}}$ are i.i.d. with common distribution ν . The *environment* ω is thus distributed according to $\mathbb{P}^\nu = \nu^{\otimes \mathbb{Z}}$.

By averaging the quenched probability with respect to the environment distribution we obtain the *annealed distribution* \mathbf{P}^ν on $(2^{\mathbb{Z}})^{\otimes \mathbb{Z}_+}$ defined by:

$$\mathbf{P}^\nu(\cdot) = \int_E \mathbf{P}_\omega(\cdot) \mathbb{P}^\nu(d\omega).$$

Expectation with respect to the annealed probability measure \mathbf{P}^ν will be denoted \mathbf{E}^ν . Note that the random walk $(X_t)_{t \in \mathbb{Z}_+}$ is a Markov chain only conditionally on the fixed environment (i.e. with respect to the quenched distribution \mathbf{P}_ω) but the Markov property fails under the annealed probability measure \mathbf{P}^ν . This is because the past history cannot be neglected, as it provides information on the environment. The random walk in i.i.d. random environment on \mathbb{Z} is the random sequence $(X_t)_{t \in \mathbb{Z}_+}$ considered under annealed distribution \mathbf{P}^ν .

The asymptotic behaviour of the walk $(X_t)_{t \in \mathbb{Z}_+}$ depends on the distribution of the ratio

$$(2) \quad \rho_0 = \frac{1 - \omega_0}{\omega_0}.$$

More precisely, if $\mathbb{E}^\nu[|\log \rho_0|]$ is finite, Solomon Solomon [1975] proved the following classification:

- (i) if $\mathbb{E}^\nu[\log \rho_0] \neq 0$, then $(X_t)_{t \in \mathbb{Z}_+}$ is transient (\mathbf{P}^ν -a.s.); moreover if $\mathbb{E}^\nu[\log \rho_0] < 0$, then $\lim_{t \rightarrow +\infty} X_t = +\infty$, \mathbf{P}^ν -a.s., the process $(X_t)_{t \in \mathbb{Z}_+}$ is transient to the right.
- (ii) if $\mathbb{E}^\nu[\log \rho_0] = 0$, then $(X_t)_{t \in \mathbb{Z}_+}$ is recurrent; moreover, $\limsup_{t \rightarrow +\infty} X_t = +\infty$ and $\liminf_{t \rightarrow +\infty} X_t = -\infty$, \mathbf{P}^ν -a.s.

In the transient case, the random walk escapes to infinity, and it is reasonable to ask at what speed. For the simple RWRE, the asymptotic velocity was obtained by Solomon [1975], Kesten et al. [1975].

The transient case may further be divided into two sub-cases, called ballistic and sub-ballistic which correspond to a linear and sub-linear speed for the random walk. Denote by T_n the first hitting time of $n \in \mathbb{Z}_+$,

$$(3) \quad T_n = \inf \{t \in \mathbb{Z}_+, X_t = n\}.$$

Assuming that the RWRE is transient $\mathbb{E}^\nu[\log \rho_0] < 0$, we can distinguish

- (1) If $\mathbb{E}^\nu[\rho_0] < 1$, then \mathbf{P}^ν -a.s.,

$$T_n/n \rightarrow \frac{1 + \mathbb{E}^\nu[\rho_0]}{1 - \mathbb{E}^\nu[\rho_0]}$$

and the RWRE is called *ballistic*.

- (2) If $\mathbb{E}^\nu[\rho_0] \geq 1$, then \mathbf{P}^ν -a.s., $T_n/n \rightarrow \infty$ and the RWRE is called sub-ballistic.

The fluctuations of T_n may be characterized more precisely. Suppose that the distribution of $\log \rho_0$ is non arithmetic (that is the group generated by the support of $\log \rho_0$ is dense in \mathbb{R}) and that there exists $\kappa \in (0, \infty)$ such that

$$(4) \quad \mathbb{E}^\nu[\rho_0^\kappa] = 1 \quad \text{and} \quad \mathbb{E}^\nu[\rho_0^\kappa \log^+(\rho_0)] < \infty$$

where $\log^+(x) = \log(x \vee 1)$. A simple convexity argument shows that if κ exists then it is unique. The value of κ determines the asymptotic behaviour of $(X_t)_{t \in \mathbb{Z}_+}$. Then, it follows from Kesten et al. [1975] that

- (1) if $\kappa < 1$, $T_n/n^{1/\kappa}$ and X_t/t^κ converge in \mathbf{P}^ν -distribution to some non trivial distribution,
- (2) if $\kappa = 1$, $T_n/n \log n$ and $(\log t/t)X_t$ converge in \mathbf{P}^ν -probability to a non zero constant,

(3) if $\kappa > 1$, T_n/n and X_t/t converge in \mathbf{P}^ν -probability to a non zero constant.

In the first two cases, the random walk is sub-ballistic and in the last case, $(X_t)_{t \in \mathbb{Z}_+}$ is ballistic as T_n and X_t grow linearly.

When the RWRE is recurrent, the fluctuations of $(X_t)_{t \in \mathbb{Z}_+}$ have been evaluated by Sinai Sinai [1982]: suppose that $\mathbb{E}^\nu [\log \rho_0] = 0$, $\mathbb{E}^\nu [\log^2 \rho_0] > 0$ and that the support of ρ_0 is included in $(0, 1)$, then $X_t/(\log t)^2$ converges in \mathbf{P}^ν -distribution to a non trivial limit (see also Zeitouni [2012] for some extensions under relaxed versions of this assumption).

Our results hold under the assumptions of Diel and Lerasle [2018], that is those of Kesten et al. [1975], in the transient case, and a slightly weaker version of those of Sinai [1982] in the recurrent case. Consider the following assumptions:

H1. $\mathbb{E}^\nu [\log \rho_0] = 0$, $\mathbb{E}^\nu [\log^2 \rho_0] > 0$ and there exists $a > 0$, such that $\mathbb{E}^\nu [\rho_0^a] + \mathbb{E}^\nu [\rho_0^{-a}] < \infty$.

H2. $\mathbb{E}^\nu [\log \rho_0] < 0$, the distribution of $\log \rho_0$ is non arithmetic and there exists $\kappa \in (0, \infty)$ such that $\mathbb{E}^\nu [\rho_0^\kappa] = 1$ and $\mathbb{E}^\nu [\rho_0^\kappa \log^+(\rho_0)] < \infty$.

Under **H1**, $(X_t)_{t \in \mathbb{Z}_+}$ is recurrent. Under **H2**, $(X_t)_{t \in \mathbb{Z}_+}$ is transient to the right. In both cases, the hitting time T_n is almost surely finite for any $n \in \mathbb{Z}_+$. We assume that the RWRE is observed until the first time it hits the state n . The observations are thus given by X_0, \dots, X_{T_n} .

Following Comets et al. [2014], for any $t_0 > 0$ and $y \in \mathbb{Z}$, define by $L(t_0, y)$ and $R(t_0, y)$ the number of steps to the left and to the right until time t_0 and from site y :

$$\begin{aligned} L(t_0, y) &= \sum_{0 \leq t \leq t_0 - 1} \mathbb{1}_{\{X_t = y, X_{t+1} = y-1\}}, \\ R(t_0, y) &= \sum_{0 \leq t \leq t_0 - 1} \mathbb{1}_{\{X_t = y, X_{t+1} = y+1\}}. \end{aligned}$$

The likelihood $\mathcal{L}_\nu(X_0, \dots, X_{T_n})$ of the observations (where T_n is defined in (3)) can be expressed as follows Comets et al. [2014]

$$\int \left(\prod_{y \in \mathbb{Z}} \omega_y^{R(T_n, y)} (1 - \omega_y)^{L(T_n, y)} \right) \mathbb{P}^\nu(d\omega) = \prod_{y \in \mathbb{Z}} \int_0^1 a^{R(T_n, y)} (1 - a)^{L(T_n, y)} \nu(da) .$$

Now, since T_n is the hitting time of the state n , for any $y \geq n$, $L(T_n, y) = 0$, and

$$L(T_n, y + 1) = \begin{cases} R(T_n, y), & \text{for all } y < 0 \\ R(T_n, y) - 1, & \text{for all } y \in [0, n - 1] \end{cases} .$$

Hence the likelihood may be rewritten as

$$\mathcal{L}_\nu(X_0, \dots, X_{T_n}) = \prod_{y \leq n-1} \int_0^1 a^{L(T_n, y+1) + \mathbb{1}_{\{y \geq 0\}}} (1 - a)^{L(T_n, y)} \nu(da) .$$

The collection $(L(T_n, y))_{y \leq n}$ is therefore a sufficient statistic that will be the building block of our estimation method. An important result of Kesten et al. [1975], central in the analysis of the parametric case derived in Comets et al. [2014] is that, under the annealed distribution \mathbf{P}^ν , the process

$$(Z_y^n)_{0 \leq y \leq n} = (L(T_n, n - y))_{0 \leq y \leq n}$$

has the same distribution as $(Z_y)_{0 \leq y \leq n}$ where $(Z_y)_{y \in \mathbb{N}}$ is a branching process with immigration in random environment (BPIRE) defined by

$$(5) \quad Z_0 = 0 \quad \text{and} \quad \forall y \in \mathbb{N}^*, Z_y = \sum_{i=0}^{Z_{y-1}} \xi_{y,i}$$

where $(\xi_{y,i})_{(y,i) \in \mathbb{Z}_+^* \times \mathbb{Z}_+}$ is a family of geometrically distributed independent random variables, i.e. for all $(y,i) \in \mathbb{Z}_+^* \times \mathbb{Z}_+$ and for all $k \in \mathbb{Z}_+$,

$$\mathbf{P}_\omega (\xi_{y,i} = k) = \omega_y (1 - \omega_y)^k .$$

Under the annealed law \mathbf{P}^ν , $(Z_x)_{x \in \mathbb{Z}_+}$ is an homogeneous Markov chain starting at 0 with transition kernel [Comets et al., 2014, Proposition 4.3]

$$(6) \quad K^\nu(i, j) = \binom{i+j}{i} \int_0^1 a^{i+1} (1-a)^j \nu(da) .$$

3. ESTIMATOR CONSTRUCTION

All along the paper, we assume that ν is absolutely continuous and has density f with respect to the Lebesgue measure.

Let $\beta > 0$, $L > 0$ and $m = \sup \{\ell \in \mathbb{Z}_+ : \ell < \beta\}$. The set $\Sigma(\beta, L)$ is the set of m times differentiable functions $g : [0, 1] \mapsto \mathbb{R}_+$ satisfying for all $(x, x') \in [0, 1]^2$

$$(7) \quad \left| g^{(m)}(x) - g^{(m)}(x') \right| \leq L |x - x'|^{\beta-m} .$$

The following section provides the construction of basic density estimators.

As suggested by (6), the moments of ν provide the natural information available for our estimation problem. Recovering a density function from its moments is a classical instance of the Hausdorff moment problem; see Akhiezer [1965].

For any $j \in \mathbb{Z}_+$, let $\mu_j[\nu]$ denote the j -th moment of the random environment distribution

$$\mu_j[\nu] = \int_0^1 t^j \nu(dt) = \int_0^1 t^j f(t) dt .$$

The moment problem is said to have unique solution if for two distributions ν and ν' over $(0, 1)$, the equations $\mu_j[\nu] = \mu_j[\nu']$ for any $j \geq 1$ imply that $\nu = \nu'$. If the distribution ν satisfies this property, it is said to be moment determinate. It is shown that a sufficient condition for ν to be moment determinate is that the distribution ν on $(0, 1)$ has a continuous density; see Mnatsakanov and Ruymgaart [2003], Mnatsakanov [2008].

When ν is moment determinates, the operator mapping the c.d.f. of ν into $(\mu_j[\nu])_{j \in \mathbb{Z}_+}$ is therefore invertible. Given $M \in \mathbb{Z}_+$, it has been shown in Mnatsakanov [2008] that its inverse can be approximated by

$$(8) \quad \nu_M([0, x]) = \sum_{k=0}^{\lfloor Mx \rfloor} \sum_{j=k}^M \binom{M}{j} \binom{j}{k} (-1)^{j-k} \mu_j[\nu] .$$

It is shown in Mnatsakanov [2008] that $\lim_{M \rightarrow \infty} \nu_M([0, x]) = \nu([0, x])$ at every point $x \in (0, 1)$ where the c.d.f. is continuous. If ν has a density f , we consider then the following approximation, defined for any $x \in [0, 1]$ by

$$(9) \quad f^M(x) = (M+1) (\nu_M([0, x+M^{-1}]) - \nu_M([0, x])) .$$

[Mnatsakanov, 2008, Theorem 1] ensures that, when f is continuous, f^M converges uniformly to f . More precisely, we establish in lemma 5 that if $f \in \Sigma(\beta, L)$ with $\beta \in (0, 2]$ then for any $x \in [0, 1]$

$$|f(x) - f^M(x)| \leq C_{\beta, L} M^{-\beta/2} .$$

In the following, we do not use the expression (8) to construct our estimator. For any (a, b) in $\mathbb{R}_+^* \times \mathbb{R}_+^*$, denote by $m^{a,b}$ the following beta-moments

$$(10) \quad m^{a,b} = \mathbb{E}^\nu \left[\omega_0^a (1 - \omega_0)^b \right] = \int_0^1 u^a (1 - u)^b f(u) du$$

where $\mathbb{B}^{a,b}$ is the beta-kernel defined in (1). Using these notations, the approximation f^M of the density may be written [Mnatsakanov, 2008, Eq (12)]

$$(11) \quad f^M(x) = \int_0^1 \mathbb{B}^{\lfloor Mx \rfloor + 1, M - \lfloor Mx \rfloor + 1}(u) f(u) du = (M + 1) \binom{M}{\lfloor Mx \rfloor} m^{\lfloor Mx \rfloor, M - \lfloor Mx \rfloor}.$$

When a and b are integers, the moments $m^{a,b}$ can be consistently estimated as shown in Diel and Lerasle [2018]. Using the convention $0/0 = 0$, denote for all $(i, j) \in \mathbb{Z}_+$

$$(12) \quad \phi^{a,b}(i, j) = \frac{\binom{i+j-(a+b)}{i-a}}{\binom{i+j}{i}} \mathbf{1}_{\{i \geq a, j \geq b\}} \quad \text{and} \quad N_n^a = \sum_{k=1}^n \mathbf{1}_{\{Z_{k-1}^n \geq a\}},$$

$$(13) \quad \widehat{m}_n^{a,b} = \frac{1}{N_n^a} \sum_{k=1}^n \phi^{a,b}(Z_{k-1}^n, Z_k^n),$$

where (Z_k^n) is defined in (5). Therefore, an estimator of $f(x)$ might be obtained by plugging an estimator of the beta moment in (11).

$$(14) \quad \forall x \in [0, 1], \quad \widehat{f}_n^M(x) = (M + 1) \binom{M}{\lfloor Mx \rfloor} \widehat{m}_n^{\lfloor Mx \rfloor, M - \lfloor Mx \rfloor}.$$

Statistical properties of these estimators are provided in Theorem 1.

4. MAIN RESULTS

Let us first derive convergence rates of the basic estimators \widehat{f}_n^M for fixed values of the regularization parameter M .

Theorem 1. *Assume that the distribution ν of the random environment has a density $f \in \Sigma(\beta, L)$ for some $\beta \in (0, 2]$ and $L \geq 1$.*

(i) *Assume **H1**. For any $M \geq 1$, there exists a constant C_ν such that*

$$(15) \quad \mathbf{E}^\nu \left[\left\| f - \widehat{f}_n^M \right\|_\infty \right] \leq C_\nu \left(LM^{-\beta/2} + M \frac{\log n}{\sqrt{n}} \right),$$

(ii) *Assume **H2**. For any $M \geq 1$*

$$(16) \quad \mathbf{E}^\nu \left[\left\| f - \widehat{f}_n^M \right\|_\infty \right] \leq C_\nu \left(LM^{-\beta/2} + M^{1+\kappa} \sqrt{\frac{\log n}{n}} \right)$$

where κ is defined in **H2**.

Theorem 1 provides the first rates of convergence for non-parametric density estimation of the random environment of a random walk. An important feature is that these rates are achieved by the same estimator in the recurrent and transient regimes. On the other hand, the value M_n optimizing these rates highly depends on both the regime of the walk and the regularity β of f that are both unknown in practice.

Corollary 2. (i) *Assume **H1**. Then, taking $M_n = \lfloor (\sqrt{n}/\log(n))^{2/(\beta+2)} \rfloor$,*

$$\mathbf{E}^\nu \left[\left\| f - \widehat{f}_n^{M_n} \right\|_\infty \right] \leq C_\nu \left(\frac{\log(n)}{\sqrt{n}} \right)^{\beta/(\beta+2)}.$$

(ii) Assume **H2**. Then, taking $M_n = (\lfloor n / \log(n) \rfloor)^{\frac{1}{\beta+2(1+\kappa)}}$,

$$\mathbf{E}^\nu \left[\left\| f - \widehat{f}_n^{M_n} \right\|_\infty \right] \leq C_\nu \left(\frac{\log(n)}{n} \right)^{\frac{\beta}{2(\beta+2(1+\kappa))}}.$$

We will next propose a method to construct an estimator which is adaptive to the regime (recurrence / transience) and the regularity of the density of the random environment. To that purpose, we follow the Goldenshluger-Lepski strategy Goldenshluger, A. and Lepski, O. [2008] to obtain a data-driven choice of the beta-moment order \widehat{M}_n . In the proof of Theorem 1, we build confidence regions for f . More precisely, it follows from Eq. (20) and Lemmas 5, 6 that there exists an event Ω_0 with probability larger than $1 - n^{-2}$, such that for all $M \in \{1, \dots, n-1\}$,

$$(17) \quad \left\| f - \widehat{f}_n^M \right\|_\infty \leq 31LM^{-\beta/2} + \frac{M+1}{N_n^M} \sqrt{3n \log n}.$$

Define, for any $M \in \{1, \dots, n-1\}$,

$$B(M) = 31LM^{-\beta/2} \quad V_n(M) = \frac{M+1}{N_n^M} \sqrt{3n \log n},$$

$$C_n(M) = \sup_{M' \in \{1, \dots, n-1\}} \left\{ \left\| \widehat{f}_n^M - \widehat{f}_n^{M \vee M'} \right\|_\infty - 2V_n(M') \right\}.$$

Goldenshluger-Lepski's choice of M is defined by

$$(18) \quad \widehat{M}_n \in \underset{M \in \{1, \dots, n-1\}}{\operatorname{argmin}} \{C_n(M) + 2V_n(M)\}.$$

The estimator satisfies the following lemma, whose proof is given for completeness.

Lemma 3. *On the event Ω_0 , for any $M \in \{1, \dots, n-1\}$*

$$\left\| f - \widehat{f}_n^{\widehat{M}_n} \right\|_\infty \leq 5B(M) + 5V_n(M).$$

Proof. Denote $d(f, g) = \|f - g\|_\infty$. By repeated applications of the triangular inequality, one obtains, for any $M \in \{1, \dots, n-1\}$, on Ω_0 ,

$$\begin{aligned} d(f, \widehat{f}_n^{\widehat{M}_n}) &\leq d(f, \widehat{f}_n^M) + d(\widehat{f}_n^M, \widehat{f}_n^{M \vee \widehat{M}_n}) + d(\widehat{f}_n^{M \vee \widehat{M}_n}, \widehat{f}_n^{\widehat{M}_n}) \\ &\leq B(M) + V_n(M) + C_n(M) + 2V_n(\widehat{M}_n) + C_n(\widehat{M}_n) + 2V_n(M) \\ &\leq B(M) + V_n(M) + C_n(M) + 2V_n(M) + C_n(M) + 2V_n(M) \\ &\leq B(M) + 5V_n(M) + 2C_n(M). \end{aligned}$$

Now, for any $M \in \{1, \dots, n-1\}$, B being non increasing and V_n being non decreasing, on Ω_0

$$\begin{aligned} C_n(M) &\leq 0 \vee \sup_{M' > M} \left\{ d(f, \widehat{f}_n^M) + d(f, \widehat{f}_n^{M'}) - 2V_n(M') \right\} \\ &\leq 0 \vee \sup_{M' > M} \left\{ B(M) + B(M') + V_n(M) - V_n(M') \right\} \leq 2B(M). \end{aligned}$$

□

Using Lemma 3 together with (17) yields the following Theorem:

Theorem 4. *Let $\beta \in (0, 2]$ and $L \geq 1$. Assume that $f \in \Sigma(\beta, L)$ holds.*

(i) Assume **H1**. Then, there exists a constant C_ν such that

$$\mathbf{P}^\nu \left(\left\| f - \widehat{f}_n^{\widehat{M}_n} \right\|_\infty \leq C_\nu \left(\frac{\log(n)}{\sqrt{n}} \right)^{\beta/(\beta+2)} \right) \geq 1 - C_\nu \frac{\log n}{\sqrt{n}}.$$

(ii) Assume **H2**. Then, there exists a constant C_ν such that

$$\mathbf{E}^\nu \left[\left\| f - \widehat{f}_n^{M_n} \right\|_\infty \right] \leq C_\nu \left(\frac{\log(n)}{n} \right)^{\frac{\beta}{2(\beta+2(1+\kappa))}},$$

The estimator $\widehat{f}_n^{M_n}$ achieves simultaneously the optimal rates of Theorem 1 in every regime. It is in this sense adaptive to the regime and the regularity of f .

The result holds in expectation in transient regimes and only with large probability in the recurrent regime. The reason is that the term N_n^M cannot be handled in the same way in transient regimes where the Markov chain (Z_k) admits a unique invariant probability and in recurrent regimes where it does not.

The rates do not match those one could reach if the environment ω is observed Bertin and Klutchnikoff [2010]. When the chain is recurrent, it visits typically more than n times almost all sites [Diel and Lerasle, 2018, Lemma 10]. Therefore, one can probably estimate the environment itself and plug these estimators in any standard density estimator. This might improve the rates in the recurrent regime but it would certainly provide a poor estimator in transient regimes. The problem of recovering the distribution of the environment is in general harder if one observes only one trajectory of the walk than if the environment is observed directly. It is not clear whether a single estimator can recover minimax rates of the i.i.d. setting in the recurrent regime and our rates in transient regimes.

5. SIMULATION STUDY

In this section, we illustrate our theoretical results. We consider RWRE in different regimes (recurrent, transient ballistic and sub-ballistic). We also investigate the impact of the regularity of the density of the environment. The number of steps of the random walk that are observed depend on the regime. It follows from our discussion in Section 2, that if the RWRE is transient to the right ($\mathbb{E}^\nu[\log \rho_0] < 0$ where ρ_0 is defined in (2)) then either

- (1) $T_n/n \rightarrow (1 + \mathbb{E}^\nu[\rho_0]) / (1 - \mathbb{E}^\nu[\rho_0])$ \mathbf{P}^ν -a.s. in the ballistic regime $\mathbb{E}^\nu[\rho_0] < 1$, in which case the number of time steps grow linearly with n
- (2) $T_n/n \rightarrow \infty$ converges \mathbf{P}^ν -a.s. in the sub-ballistic regime $\mathbb{E}^\nu[\rho_0] \geq 1$, showing that the number of time steps grow superlinearly with n . In the sub-ballistic case, the fluctuations of T_n are controlled by the parameter κ defined in (4).

We then compare the performance of our estimator in three sub-ballistic regime but with different κ . In both parts, we consider our estimation procedure for different values of the parameter M .

5.1. Influence of the regularity. In this section, we consider 3 different distributions for the environment.

- The first example is the Beta distribution $B(3, 3)$ whose density $\mathbb{B}^{3,3}$ is defined in (1).
- The second example is the distribution with density

$$x \mapsto 4 \left(1 - \frac{|2x - 0.6|}{0.15} \right) \mathbf{1}_{[0.225, 0.325]}(x) + \frac{14}{3} \left(1 - \frac{|2x - 1.2|}{0.3} \right) \mathbf{1}_{[0.45, 0.75]}(x).$$

- The last example is the distribution with density

$$x \mapsto 0.6 \mathbb{B}^{3,3}(2x) \mathbf{1}_{[0, 0.5]}(x) + 1.4 \mathbb{B}^{3,3}(2x - 1) \mathbf{1}_{(0.5, 1]}(x).$$

These densities are plotted in black in Figure 1. In the first example, the chain is recurrent, in the second and the third, it is sub-ballistic with a value of κ respectively equal to 0.17 and 0.57.

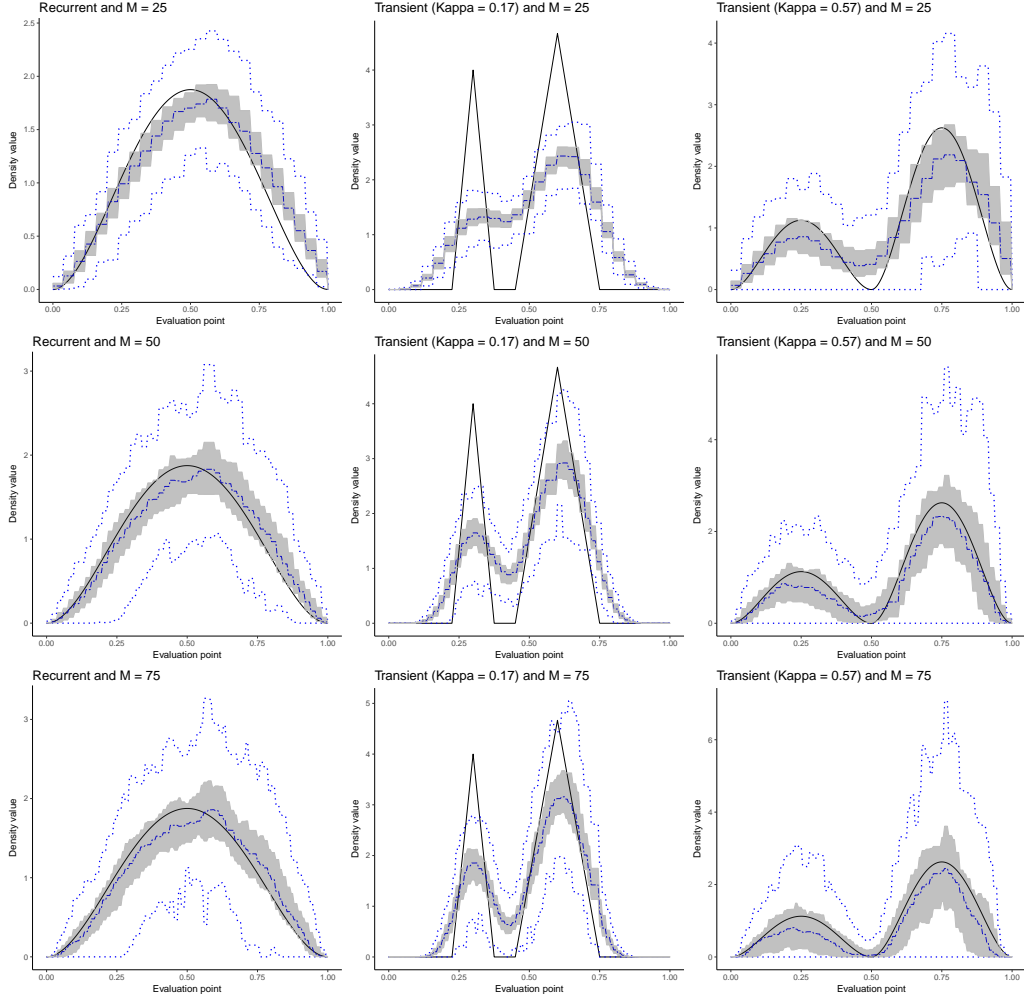


FIGURE 1. True density (solid black line) and in each point $x \in (0, 1)$ the median of the estimator $\hat{f}_n^M(x)$ (dashed-dotted blue line), its interquartile range (greyed area) and its lower and upper hinges (dotted blue line) of the estimator \hat{f}_{100}^M for the three considered environment (one environment per column) and for $M \in \{25, 50, 75\}$.

For each distribution of the environment, 100 trajectories of the RWRE have been simulated until the chain reaches 100.

In each case, our (piecewise constant) estimator \hat{f}_n^M , defined in (14), built for $M \in \{25, 50, 75\}$ is compared with the actual density f . More precisely, figure 1 shows for each considered environment and for M in $\{25, 50, 75\}$ a graphic representation of the true density (solid black line) and in each point $x \in (0, 1)$ the median of the estimator $\hat{f}_n^M(x)$ (dashed-dotted blue line), its interquartile range (greyed area) and its lower and upper hinges (dotted blue line).

According to our theoretical bounds, the estimator \hat{f}_n^M performs better when the true density is regular as in Examples 1 and 3 than in the non regular Example 2. The estimator \hat{f}_n^M , based on a polynomial approximation, cannot properly approximate the two triangles shaped density of Example 2. More precisely, the regularization parameter M should probably be much larger for the bias of the estimator to be small.

5.2. Influence of the regime. We now consider trajectories from RWRE that all are transient to right and sub-ballistic. The environment is drawn from the distribution with density

$$(19) \quad x \mapsto 0.8\mathbb{B}^{3,3}(0.5 + 2(x - c_1)) + 1.2\mathbb{B}^{3,3}(0.5 + 2(x - c_2))$$

and for three set of the parameters c_1 and c_2 such that the parameter κ associated to the sub-ballistic RWRE takes values near the extreme values of this regime. In the following table, the chosen sets of parameters are provided with the corresponding (numerically approximated) values of κ .

| | | | |
|----------|------|------|------|
| κ | 0.04 | 0.35 | 1 |
| c_1 | 0.27 | 0.3 | 0.38 |
| c_2 | 0.67 | 0.7 | 0.7 |

For each set of parameters for the environment distribution, 100 trajectories until the RWRE reaches 100 for the first time have been generated.

Figure 2 illustrates the variability of the estimator \widehat{f}_{100}^M . For the densities defined in 19 with κ in $\{0.04, 0.35, 1\}$, we plot the true density of the environment as well as the interquartile range and lower and upper hinges of \widehat{f}_{100}^M computed over the 100 trajectories and for $M \in \{25, 50, 75\}$.

As expected from our theoretical results, the variability of the estimator deteriorates with κ . When $\kappa = 0.04$ or $\kappa = 0.35$, the estimator shows better bias and worse variability when M grows. The situation in the nearly ballistic case ($\kappa = 1$) is different : the walk reaches faster $n = 100$ and the trajectory is thus shorter, one single trajectory reaching $n = 100$ does not seem sufficient to obtain a reliable estimator of f .

6. PROOF

6.1. Proof of Theorem 1. By the triangular inequality

$$(20) \quad \left\| f - \widehat{f}_n^M \right\|_{\infty} \leq \left\| f^M - f \right\|_{\infty} + \left\| f^M - \widehat{f}_n^M \right\|_{\infty}.$$

The first term in the right-hand side is deterministic and called the bias, the second is stochastic and called the variance. Lemma 5 provides an upper bound for the bias. Random bounds on the variance, valid in any regime, are provided in Lemma 6. Lemma 7 uses these random bounds to derive deterministic bounds on the variance that, once plugged in (20) together with the result of Lemma 5 allow to conclude the proof of (16) and (15). The choice of M_n optimizing the bounds is then immediate.

Lemma 5. *Let $\beta \in (0, 2]$ and $L \geq 1$. Assume that $f \in \Sigma(\beta, L)$. Then*

$$(21) \quad \left\| f - f^M \right\|_{\infty} \leq 31LM^{-\beta/2}.$$

Proof. Let $x \in [0, 1]$ and let $B_{(M,x)}$ be a beta distributed random variable with parameters $\lfloor Mx \rfloor + 1$ and $M - \lfloor Mx \rfloor + 1$ on a probability space $(\Omega, \mathcal{A}, \mathbb{P})$. By definition,

$$f^M(x) - f(x) = \int_0^1 f(u)\mathbb{B}^{\lfloor Mx \rfloor + 1, M - \lfloor Mx \rfloor + 1}(u)du - f(x) = \mathbb{E} [f(B_{(M,x)}) - f(x)].$$

Consider first the case $0 < \beta \leq 1$. Since f is (β, L) -Hölder, by Jensen's inequality,

$$\left| f^M(x) - f(x) \right| \leq \mathbb{E} [|f(B_{(M,x)}) - f(x)|] \leq L\mathbb{E} [|B_{(M,x)} - x|^\beta] \leq L\mathbb{E} [|B_{(M,x)} - x|]^\beta.$$

For any $\eta > 0$, it holds

$$(22) \quad \mathbb{E} [|B_{(M,x)} - x|] \leq \eta + \mathbb{E} [|B_{(M,x)} - x| \mathbf{1}_{\{|B_{(M,x)} - x| > \eta\}}].$$

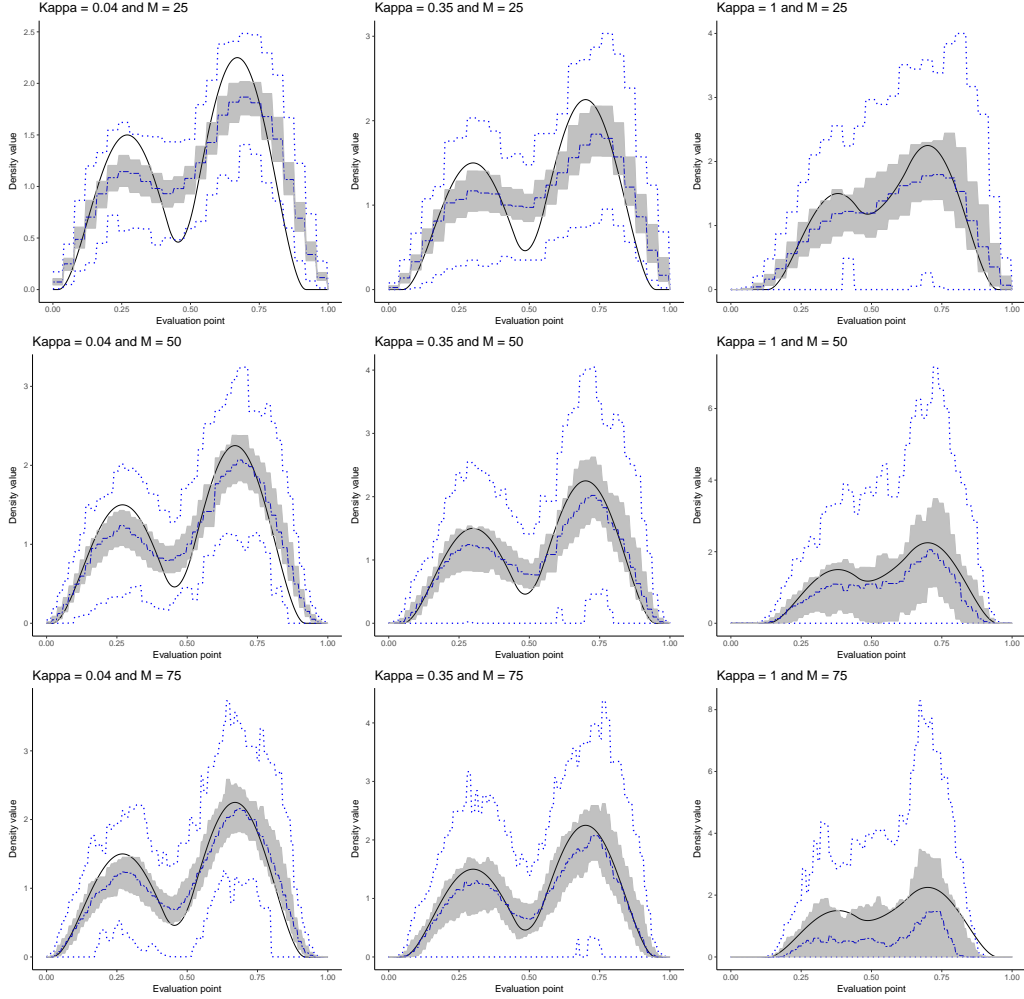


FIGURE 2. True density (in black) and boxplot (median, first and third quartiles as well as lower and upper hinge) of the estimator \hat{f}_{100}^M for three different values of parameter M (25, 50 and 75) and κ (0.04, 0.35 and 1)

By Cauchy-Schwarz and Markov inequalities,

$$\begin{aligned}
 \mathbb{E} \left[|B_{(M,x)} - x| \mathbf{1}_{\{|B_{(M,x)} - x| > \eta\}} \right] &\leq \sqrt{\mathbb{E} \left[(B_{(M,x)} - x)^2 \right] \mathbb{P} \left(|B_{(M,x)} - x| > \eta \right)} \\
 (23) \qquad \qquad \qquad &\leq \sqrt{\left(\text{Var} (B_{(M,x)}) + (\mathbb{E} [B_{(M,x)}] - x)^2 \right) \frac{\text{Var} (B_{(M,x)})}{\eta^2}}.
 \end{aligned}$$

One has

$$\mathbb{E} [B_{(M,x)}] = \frac{\lfloor Mx \rfloor + 1}{M + 2} \quad \text{and} \quad \text{Var} (B_{(M,x)}) = \frac{(\lfloor Mx \rfloor + 1)(M - \lfloor Mx \rfloor + 1)}{(M + 2)^2(M + 3)}.$$

Therefore,

$$(24) \qquad \qquad \qquad \left| \mathbb{E} [B_{(M,x)}] - x \right| \leq \frac{2}{M + 2} \quad \text{and} \quad \text{Var} (B_{(M,x)}) \leq \frac{1}{4M}.$$

Plugging (24) in (23) yields:

$$\mathbb{E} \left[|B_{(M,x)} - x| \mathbb{1}_{\{|B_{(M,x)} - x| > \eta\}} \right] \leq \sqrt{\left(\frac{1}{4M} + \frac{4}{M^2} \right) \frac{1}{4M\eta^2}} \leq \frac{1}{\eta} \frac{\sqrt{17}}{4M}.$$

Plugging this bound in (22) and optimizing in $\eta > 0$ yields

$$|f^M(x) - f(x)| \leq 17^{\beta/4} L M^{-\beta/2}.$$

Consider then the case $1 < \beta \leq 2$. Since f is differentiable, by the mean-value theorem, there exists a random variable $\tilde{B}_{(M,x)}$ such that

$$\left| \tilde{B}_{(M,x)} - x \right| \leq |B_{(M,x)} - x| \quad \text{and} \quad f(B_{(M,x)}) - f(x) = f'(\tilde{B}_{(M,x)})(B_{(M,x)} - x).$$

Therefore

$$\begin{aligned} |f^M(x) - f(x)| &= \left| \mathbb{E} \left[f'(x)(B_{(M,x)} - x) + \left(f'(\tilde{B}_{(M,x)}) - f'(x) \right) (B_{(M,x)} - x) \right] \right| \\ &\leq |f'(x)| \left| \mathbb{E} [B_{(M,x)}] - x \right| + \mathbb{E} \left[\left| f'(\tilde{B}_{(M,x)}) - f'(x) \right| |B_{(M,x)} - x| \right]. \end{aligned}$$

Using that f is (β, L) -Hölder and (24), one gets

$$|f^M(x) - f(x)| \leq \|f'\|_{\infty} \frac{2}{M} + L \mathbb{E} \left[|B_{(M,x)} - x|^{\beta} \right].$$

Furthermore,

$$\begin{aligned} \mathbb{E} \left[|B_{(M,x)} - x|^{\beta} \right] &\leq \mathbb{E} \left[|B_{(M,x)} - \mathbb{E} [B_{(M,x)}] + \mathbb{E} [B_{(M,x)}] - x|^{\beta} \right] \\ &\leq 2^{\beta-1} \left(\mathbb{E} \left[|B_{(M,x)} - \mathbb{E} [B_{(M,x)}]|^{\beta} \right] + |\mathbb{E} [B_{(M,x)}] - x|^{\beta} \right). \end{aligned}$$

By (24),

$$\begin{aligned} \mathbb{E} \left[|B_{(M,x)} - x|^{\beta} \right] &\leq 2^{\beta-1} \left(\text{Var} (B_{(M,x)})^{\beta/2} + |\mathbb{E} [B_{(M,x)}] - x|^{\beta} \right) \\ &\leq 2^{\beta-1} \left(\frac{2^{\beta/2}}{M^{\beta/2}} + \frac{2^{\beta}}{M^{\beta}} \right) \leq \frac{4^{\beta}}{M^{\beta/2}}. \end{aligned}$$

By [Tsybakov, 2009, Theorem 1.1],

$$\|f'\|_{\infty} \leq \frac{3}{\sqrt{4 - \sqrt{13}}} \frac{L + \beta + 1}{\beta + 1} \leq 7.2L.$$

It thus finally holds:

$$|f^M(x) - f(x)| \leq 31LM^{-\beta/2}.$$

As this result holds for all $x \in [0, 1]$, the proof is complete. \square

Let us now turn to the random part of the risk. We start with a random upper bound.

Lemma 6. *Assuming $\mathbf{H}2$ or $\mathbf{H}1$, then, for any $z > 0$,*

$$\mathbf{P}^{\nu} \left(\left\| f^M - \hat{f}_n^M \right\|_{\infty} > \frac{M+1}{N_n^M} \sqrt{\frac{n(z + \log M)}{2}} \right) \leq 2e^{-z}.$$

Proof. By definition, one has

$$f^M(x) - \hat{f}_n^M(x) = (M+1) \binom{M}{\lfloor Mx \rfloor} \left(m^{\lfloor Mx \rfloor, M - \lfloor Mx \rfloor} - \hat{m}_n^{\lfloor Mx \rfloor, M - \lfloor Mx \rfloor} \right)$$

By [Diel and Lerasle, 2018, Theorem 4], for any $z > 0$,

$$\mathbf{P}^\nu \left(\left| m^{\lfloor Mx \rfloor, M - \lfloor Mx \rfloor} - \widehat{m}_n^{\lfloor Mx \rfloor, M - \lfloor Mx \rfloor} \right| > \frac{n}{N_n^{\lfloor Mx \rfloor}} \binom{M}{\lfloor Mx \rfloor}^{-1} \sqrt{\frac{z}{2n}} \right) \leq 2e^{-z}.$$

It remains to remark that $N_n^{\lfloor Mx \rfloor} \geq N_n^M$ and to apply a union bound to conclude the proof. \square

The following lemma provides deterministic rates of convergence that derive from Lemma 6.

Lemma 7. *Under $\mathbf{H}2$, X is transient and*

$$\mathbf{E}^\nu \left[\left\| f^M - \widehat{f}_n^M \right\|_\infty \right] \leq C_\nu M^{1+\kappa} \sqrt{\frac{\log n}{n}}.$$

Under $\mathbf{H}1$, X is recurrent and

$$\mathbf{E}^\nu \left[\left\| f^M - \widehat{f}_n^M \right\|_\infty \right] \leq C_\nu M \frac{\log n}{\sqrt{n}}.$$

Proof. Fix some $M \geq 1$. If the chain is transient, by [Diel and Lerasle, 2018, Lemmas 8 and 9], there exists a constant C_ν such that, for any $z > 0$,

$$\mathbf{P}^\nu \left(\frac{N_n^M}{n} \geq \frac{1}{C_\nu} \left(\frac{1}{M^\kappa} - \frac{C_\nu \sqrt{z}}{\sqrt{n}} \right) \right) \geq 1 - 2e^{-z}.$$

Therefore,

$$(25) \quad \mathbf{P}^\nu \left(\frac{N_n^M}{n} \geq \frac{1}{C_\nu M^\kappa} \right) \geq 1 - 2e^{-n/C_\nu^2 M^{2\kappa}}.$$

Combining (25) with Lemma 6 yields, for any $z \in (0, n/4C_\nu^2 M^{2\kappa}]$,

$$(26) \quad \mathbf{P}^\nu \left(\left\| f^M - \widehat{f}_n^M \right\|_\infty > C_\nu M^{(1+\kappa)} \sqrt{\frac{z + \log M}{n}} \right) \leq 4e^{-z}.$$

By (12) and (13), both f^M and \widehat{f}_n^M are uniformly upper-bounded by $M+1$. One can therefore integrate (26) to get, for any $M \leq n^{1/2\kappa}$,

$$\mathbf{E}^\nu \left[\left\| f^M - \widehat{f}_n^M \right\|_\infty \right] \leq C_\nu M^{1+\kappa} \sqrt{\frac{\log M}{n}}.$$

As the bound also holds obviously for $M \geq n^{1/2\kappa}$ the proof of the transient case is complete.

Assume now that the chain is recurrent, then [Diel and Lerasle, 2018, Lemma 10] states that there exists C_ν such that,

$$(27) \quad \mathbf{P}^\nu \left(N_n^n \leq \frac{n}{2} \right) \leq C_\nu \frac{\log n}{\sqrt{n}}.$$

Combining (27) with that of Lemma 6 implies that, for any $M \in \{1, \dots, n\}$,

$$\mathbf{P}^\nu \left(\left\| f^M - \widehat{f}_n^M \right\|_\infty > (M+1) \sqrt{\frac{2(z + \log M)}{n}} \right) \leq 2e^{-z} + C_\nu \frac{\log n}{\sqrt{n}}.$$

Choosing $z = \log n$ and noticing that $\left\| f^M \right\|_\infty \vee \left\| \widehat{f}_n^M \right\|_\infty \leq M+1$ concludes the proof. \square

Conclusion of the proof of Theorem 1. Plugging the conclusions of Lemmas 5 and 7 in (20) yields, if X is transient,

$$\mathbf{E}^\nu \left[\left\| f - \widehat{f}_n^M \right\|_\infty \right] \leq 31LM^{-\beta/2} + C_\nu M^{1+\kappa} \sqrt{\frac{\log n}{n}}.$$

If X is recurrent,

$$\mathbf{E}^\nu \left[\left\| f - \widehat{f}_n^M \right\|_\infty \right] \leq 31LM^{-\beta/2} + C_\nu M \frac{\log n}{\sqrt{n}}.$$

The proof of Theorem 1 is complete.

6.2. Proof of Theorem 4.

6.2.1. *Conclusion of the proof.* As $B(M)$ and $V(M)$ are non-negative and respectively non-increasing and non-decreasing, Lemma 3 applies and one has therefore, on Ω ,

$$\left\| f - \widehat{f}_n^{\widehat{M}_n} \right\|_\infty \leq 5 \inf_{M \in \{1, \dots, n-1\}} \left\{ 31LM^{-\beta/2} + \frac{M+1}{N_n^M} \sqrt{3n \log(n+1)} \right\}.$$

Let $M_{\max} \leq (n/3C_\nu \log n)^{1/2\kappa}$. A union bound in (25) gives that, if X is transient,

$$\mathbf{P}^\nu \left(\forall M \in \{1, \dots, M_{\max}\}, \frac{N_n^M}{n} \geq \frac{1}{C_\nu M^\kappa} \right) \geq 1 - \sum_{M=1}^{M_{\max}} e^{-n/C_\nu M^{2\kappa}} \geq 1 - M_{\max} e^{-3 \log n}.$$

Therefore, on an event with probability larger than $1 - (M_{\max} + 1)e^{-3 \log n} - n^{-2} \geq 1 - 2n^{-2}$,

$$\begin{aligned} \left\| f - \widehat{f}_n^{\widehat{M}_n} \right\|_\infty &\leq \inf_{M \in \{1, \dots, M_{\max}\}} \left\{ 31LM^{-\beta/2} + C_\nu M^{\kappa+1} \sqrt{\frac{\log n}{n}} \right\} \\ &\leq C_{\nu, \alpha} \left(\frac{\log n}{n} \right)^{\beta/(4+4\kappa+2\beta)}. \end{aligned}$$

The proof is concluded in the transient case since $\left\| \widehat{f}_n^{\widehat{M}_n} \right\|_\infty \leq n + 1$.

Since $N_n^M \geq N_n^n$ for any $M \in \{1, \dots, n-1\}$, in the recurrent case, one has therefore, by (27), on an event with probability larger than $1 - C_\nu \log n / \sqrt{n}$,

$$\begin{aligned} \left\| f - \widehat{f}_n^{\widehat{M}_n} \right\|_\infty &\leq \inf_{M \in \{1, \dots, n-1\}} \left\{ 31LM^{-\beta/2} + C_\nu M \frac{\log n}{\sqrt{n}} \right\} \\ &\leq C_\nu \left(\frac{(\log n)^2}{n} \right)^{\beta/(2\beta+4)}. \end{aligned}$$

ACKNOWLEDGEMENTS

The work of Antoine Havet was supported by a public grant as part of the *Investissement d'avenir* project, reference ANR-11-LABX-0056-LMH, LabEx LMH. The work of Matthieu Lerasle was supported by a public grant from FAST-BIG project ANR-17-CE23-0011.

REFERENCES

- O. Adelman and N. Enriquez. Random walks in random environment: what a single trajectory tells. *Israel J. Math.*, 142:205–220, 2004. ISSN 0021-2172. doi: 10.1007/BF02771533. URL <http://dx.doi.org/10.1007/BF02771533>.
- N. Akhiezer. *The classical moment problem and some related questions in analysis*. Translated by N. Kemmer. Hafner Publishing Co., New York, 1965.
- A. Alemany, A. Mossa, I. Junier, and F. Ritort. Experimental free-energy measurements of kinetic molecular states using fluctuation theorems. *Nat Phys*, 8(9):688–694, 2012.
- P. Andreoletti, D. Loukianova, and C. Matias. Hidden Markov model for parameter estimation of a random walk in a Markov environment. *ESAIM Probab. Stat.*, 19:605–625, 2015. ISSN 1292-8100. doi: 10.1051/ps/2015008. URL <http://dx.doi.org/10.1051/ps/2015008>.
- B. S. Baldazzi, V., S. Cocco, E. Marinari, and R. Manasson. Inference of DNA sequences from mechanical unzipping: an ideal-case study. *Phys. Rev. Lett.*, 96, 2006.
- B. S. Baldazzi, V., S. Cocco, E. Marinari, and R. Manasson. Inferring DNA sequences from mechanical unzipping data: the large-bandwidth case. *Phys. Rev. E*, 75, 2007.
- K. Bertin and N. Klutchnikoff. Minimax properties of beta kernel density estimators. *ArXiv e-prints*, Jan. 2010.
- K. Bertin and N. Klutchnikoff. Adaptive estimation of a density function using beta kernels. *ESAIM Probab. Stat.*, 18:400–417, 2014. ISSN 1292-8100. doi: 10.1051/ps/2014010. URL <http://dx.doi.org/10.1051/ps/2014010>.
- T. Bouezmarni and J.-M. Rolin. Consistency of the beta kernel density function estimator. *Canad. J. Statist.*, 31(1):89–98, 2003. ISSN 0319-5724. doi: 10.2307/3315905. URL <https://doi.org/10.2307/3315905>.
- T. Bouezmarni and J.-M. Rolin. Consistency of the beta kernel density function estimator. *Canadian Journal of Statistics*, 31(1):89–98, 2003. doi: {10.2307/3315905}. URL <http://dx.doi.org/10.2307/3315905>.
- S. X. Chen. Beta kernel estimators for density functions. *Comput. Statist. Data Anal.*, 31(2):131–145, 1999. ISSN 0167-9473. doi: 10.1016/S0167-9473(99)00010-9. URL [https://doi.org/10.1016/S0167-9473\(99\)00010-9](https://doi.org/10.1016/S0167-9473(99)00010-9).
- Chen, Song Xi. Beta kernel estimators for density functions. *Computational Statistics and Data Analysis*, 31(2):131 – 145, 1999. ISSN 0167-9473. doi: [http://dx.doi.org/10.1016/S0167-9473\(99\)00010-9](http://dx.doi.org/10.1016/S0167-9473(99)00010-9). URL <http://www.sciencedirect.com/science/article/pii/S0167947399000109>.
- A. Chernov. Replication of a multicomponent chain by the lightning mechanism. *Biofizika*, 12:297–301, 1967.
- F. Comets, M. Falconnet, O. Loukianov, and D. Loukianova. Maximum likelihood estimator consistency for recurrent random walk in a parametric random environment with finite support. *Stochastic Process. Appl.*, 126(11):3578–3604, 2014. ISSN 0304-4149. doi: 10.1016/j.spa.2016.04.034. URL <http://dx.doi.org/10.1016/j.spa.2016.04.034>.
- F. Comets, M. Falconnet, O. Loukianov, and D. Loukianova. Maximum likelihood estimator consistency for recurrent random walk in a parametric random environment with finite support. *Stochastic Process. Appl.*, 126(11):3578–3604, 2016. ISSN 0304-4149. doi: 10.1016/j.spa.2016.04.034. URL <https://doi.org/10.1016/j.spa.2016.04.034>.
- R. Diel and M. Lerasle. Non parametric estimation for random walks in random environment. *Stochastic Processes and their Applications*, 128(1):132–155, 2018. ISSN 0304-4149. doi: <http://dx.doi.org/10.1016/j.spa.2017.04.011>. URL <http://www.sciencedirect.com/science/article/pii/S0304414917301254>.

- M. Falconnet, A. Gloter, and D. Loukianova. Maximum likelihood estimation in the context of a sub-ballistic random walk in a parametric random environment. *Math. Methods Statist.*, 23(3):159–175, 2014a. ISSN 1066-5307. doi: 10.3103/S1066530714030016. URL <http://dx.doi.org/10.3103/S1066530714030016>.
- M. Falconnet, D. Loukianova, and C. Matias. Asymptotic normality and efficiency of the maximum likelihood estimator for the parameter of a ballistic random walk in a random environment. *Math. Methods Statist.*, 23(1):1–19, 2014b. ISSN 1066-5307. doi: 10.3103/S1066530714010013. URL <http://dx.doi.org/10.3103/S1066530714010013>.
- Goldenshluger, A. and Lepski, O. Universal pointwise selection rule in multivariate function estimation. *Bernoulli*, 14(4):1150–1190, 11 2008. doi: 10.3150/08-BEJ144. URL <http://dx.doi.org/10.3150/08-BEJ144>.
- J. M. Huguet, N. Forns, and F. Ritort. Statistical properties of metastable intermediates in dna unzipping. *Phys. Rev. Lett.*, 103.
- H. Kesten, M. Kozlov, and F. Spitzer. A limit law for random walk in a random environment. *Compositio Mathematica*, 30(2):145–168, 1975. URL <http://eudml.org/doc/89251>.
- S. J. Koch, A. Shundrovsky, B. C. Jantzen, and M. D. Wang. Probing protein-dna interactions by unzipping a single dna double helix. *Biophysical Journal*, 83(2):1098–1105, 2002.
- R. Mnatsakanov. Hausdorff moment problem: Reconstruction of probability density functions. *Statistics and probability letters* 78, (2):1869–1877, 2008.
- R. Mnatsakanov and F. H. Ruymgaart. Some properties of moment-empirical CDF’s with application to some inverse estimation problems. *Math. Methods Statist.*, 12(4):478–495 (2004), 2003. ISSN 1066-5307.
- Y. G. Sinai. The limit behavior of a one-dimensional random walk in a random environment. *Teor. Veroyatnost. i Primenen.*, 27(2):247–258, 1982. ISSN 0040-361X.
- F. Solomon. Random walks in a random environment. *Ann. Probab.*, 3(1):1–31, 02 1975. doi: 10.1214/aop/1176996444. URL <http://dx.doi.org/10.1214/aop/1176996444>.
- A. Tsybakov. *Introduction to nonparametric estimation*. Springer Series in Statistics. Springer, New York, 2009. ISBN 978-0-387-79051-0. doi: 10.1007/b13794. URL <http://dx.doi.org/10.1007/b13794>. Revised and extended from the 2004 French original, Translated by Vladimir Zaiats.
- O. Zeitouni. Random walks in random environment. In *Computational complexity. Vols. 1–6*, pages 2564–2577. Springer, New York, 2012. doi: 10.1007/978-1-4614-1800-9_157. URL http://dx.doi.org/10.1007/978-1-4614-1800-9_157.