



**HAL**  
open science

## New indices for rapid assessment of pollination services based on crop yield data: France as a case study

Gabrielle Martin, Colin Fontaine, Francesco Accatino, Emmanuelle Porcher

### ► To cite this version:

Gabrielle Martin, Colin Fontaine, Francesco Accatino, Emmanuelle Porcher. New indices for rapid assessment of pollination services based on crop yield data: France as a case study. 2018. hal-01815474v1

**HAL Id: hal-01815474**

**<https://hal.science/hal-01815474v1>**

Preprint submitted on 14 Jun 2018 (v1), last revised 9 Jul 2019 (v2)

**HAL** is a multi-disciplinary open access archive for the deposit and dissemination of scientific research documents, whether they are published or not. The documents may come from teaching and research institutions in France or abroad, or from public or private research centers.

L'archive ouverte pluridisciplinaire **HAL**, est destinée au dépôt et à la diffusion de documents scientifiques de niveau recherche, publiés ou non, émanant des établissements d'enseignement et de recherche français ou étrangers, des laboratoires publics ou privés.

1 -Article Title: New indices for rapid assessment of pollination services based on crop yield  
2 data: France as a case study

3

4 -Authors (given name first and family name second) : Gabrielle Martin<sup>1\*</sup>, Colin Fontaine<sup>1</sup>,  
5 Francesco Accatino<sup>2</sup>, Emmanuelle Porcher<sup>1</sup>

6 -Full name(s), affiliation(s) and e-mail address(es) of all author(s) :

7 Gabrielle Martin<sup>1</sup> gabrielle.martin@mnhn.fr, Colin Fontaine<sup>1</sup> colin.fontaine@mnhn.fr,

8 Francesco Accatino<sup>2</sup> francesco.accatino@inra.fr, Emmanuelle Porcher<sup>1</sup>

9 emmanuelle.porcher@mnhn.fr

10 <sup>1</sup>Centre d'Ecologie et des Sciences de la Conservation, Sorbonne Universités UMR MNHN-  
11 CNRS-SU 7204, 75005 Paris, France

12 <sup>2</sup>INRA UMR SADAPT - Team Concept, 75005 Paris, France.

13

14 - the name and complete mailing address (including telephone and fax numbers and e-mail  
15 address) of the person to whom correspondence:

16 \*Corresponding author:

17 Gabrielle Martin

18 UMR 7204 – CESCO – CP 135

19 Muséum national d'Histoire naturelle

20 Département Homme et environnement,

21 43 rue Buffon, 75005 Paris, France

22 Tel: + 33 1 40 79 81 02 - mail: gabrielle.martin@mnhn.fr

23

24 **Abstract**

25 Local studies indicate that animal pollination is essential for crop productivity, but its  
26 effectiveness and temporal stability vary broadly across regions. However, there is no simple  
27 and rapid method to assess the pollination services over large areas. Here, we introduce two  
28 new indices to measure pollination effectiveness and temporal stability in farmland, the  
29 Pollination Services Index and the index of Temporal Variation in Pollination Services, that  
30 only require readily available data, namely crop yield and crop pollinator dependence. The  
31 philosophy of these indices is to compare at a given site the standardized yield, or the  
32 temporal variation in yield, among crops that have different levels of dependence on animal  
33 pollinators for their production. We expect that where there is a shortage of pollinators,  
34 standardized crop yields should decrease, and temporal variation in crop yields should  
35 increase, with increasing dependence on pollinators. The Pollination Services Index in a given  
36 area is thus defined as the slope of the linear regression between standardized crop yield and  
37 crop pollinator dependence; the Temporal Variation in Pollination Services is defined as the  
38 slope of the linear regression between the inter-annual coefficient of variation of crop yield  
39 and crop pollinator dependence. We calculated these two indices in France, where we show  
40 extensive spatial variation in the estimated pollination services. We further show that this  
41 variation in Pollination Services Index is negatively correlated with the index of Temporal  
42 Variation in Pollination Services, and positively correlated with habitat quality for pollinators.  
43 Looking at France with a departmental resolution, results showed that intensive farming is  
44 not significantly associated with lower values of the Pollination Services Index, but it is  
45 positively correlated with higher Temporal Variation in Pollination Services. Despite some  
46 limitations that deserve further attention, these indices may constitute promising, cost-  
47 effective tools to highlight regions of pollination deficit over large areas.

48

49 **Highlights**

50 -We introduce indices for rapid assessment of pollination services over large areas.

51 -The two new indices only require data on crop yield and crop pollinator dependence.

52 -Pollination effectiveness correlates positively with habitat quality for pollinators.

53 -Pollination stability correlates negatively with intensive farming.

54 -The two indices are used to map pollination services for the first time in France.

55

56 **Keywords:** Pollination effectiveness; Pollination stability; Relative Pollination Potential; Crop  
57 yield; Ecosystem services; Intensive farming.

58

59 **1. Introduction**

60 There is strong evidence that wild (Biesmeijer et al., 2006) and managed (Potts et al., 2010;  
61 vanEngelsdorp et al., 2011) insect pollinators have declined in abundance and diversity over  
62 the past few decades in Europe and North America (Potts et al., 2016). The main recognized  
63 drivers of such a decline include land-use change and the resulting loss and fragmentation of  
64 semi-natural habitats, environmental pollution, due to e.g. pesticides, decreasing resource  
65 diversity and/or abundance, alien species, spread of pathogens and climate change (see  
66 Potts et al., 2016 for a synthesis). Decline in pollinators has raised much attention because  
67 animal pollination is essential for the persistence of wild plant communities (Aguilar et al.,  
68 2006; Ashman et al., 2004; Biesmeijer et al., 2006; Fontaine et al., 2005), and because it is  
69 considered an important ecosystem service (Millennium Ecosystem Assessment, 2005),  
70 defined by Daily (1997) as “the conditions and processes through which natural ecosystems,  
71 and the species that make them up, sustain and fulfill human life”. For example, the yield of  
72 ca. 75% of crop species representing 35% of global food production is improved by animal  
73 pollination (Klein et al., 2007). In Europe, the proportion of crop species (partially)  
74 dependent on pollinators reaches 84% (Williams, 1994).

75

76 The actual contribution of pollinators to crop yields is however known to vary through space  
77 and time depending on the abundance, composition or diversity of pollinator communities  
78 (Garibaldi et al., 2011b). Assessing the pollination services over large areas is crucial to  
79 quantify the provision of these services, to identify general spatial patterns, temporal trends  
80 and potential drivers of pollination services, as well as to inform land-management decisions  
81 and to achieve conservation objectives. Moreover, the assessment of the spatial distribution  
82 of the pollination services over large spatial extents has become a policy priority in the last

83 years (see e.g. “Action 5” of the EU biodiversity strategy, European Commission, 2011).

84 However, so far there is no simple means to evaluate this variation over large areas.

85 Numerous local scale studies have demonstrated a positive effect of wild pollinator

86 abundance or diversity on crop production and its temporal stability (Garibaldi et al., 2016,

87 2013, 2011b). Most of these field-scale studies use data-intensive experimental methods to

88 collect detailed information on flower-visitor richness, visitation rates, and seed or fruit set,

89 thereby providing precise estimates of the pollination services at a local scale. Although they

90 are fundamental for an accurate measure of animal pollination, these methods cannot easily

91 be used to assess the pollination services over larger areas, because they are expensive and

92 extremely time-consuming.

93 To our knowledge, a single, indirect measure of the pollination services exists at the

94 European scale: Zulian et al. (2013) introduced the Relative Pollination Potential index,

95 defined as the potential of ecosystems to support crop pollination by wild bees. The Relative

96 Pollination Potential combines literature and expert-assessed parameters on the ecology of

97 wild bee species, with spatial information on resource availability for such pollinators (i.e.,

98 food and nesting sites). The Relative Pollination Potential decreases with the distance to

99 semi-natural habitats (a proxy of the bee visitation rate) and increases with annual

100 temperature (a proxy of wild bee activity). The mapping of this index shows an increase in

101 pollination potential along a North-South gradient following the temperature gradient in

102 Europe (Zulian et al., 2013). However, the indicator only uses a-priori and expert-based

103 assumptions on wild bee ecology, it is not based on observations of pollinators or pollination,

104 and has not been validated against data. For this reason, its interpretation as an indicator of

105 the pollination service might be questionable.

106

107 In this study, we aim at introducing and testing two new indices based on the direct measure  
108 of crop yield, which, although influenced by numerous additional factors, is the measurable  
109 final output of pollination services. The general idea of these new indices is to quantify for  
110 different areas (i) the relative effectiveness in animal pollination, defined here as a  
111 quantitative measure of the amount of successful pollen deposition and (ii) the temporal  
112 instability in animal pollination. We called these two new indices (i) the Pollination Services  
113 Index and (ii) the Temporal Variation in Pollination Services, respectively. Our approach  
114 elaborates on that of Garibaldi et al. (2011a), who examined the correlations between (1)  
115 standardized crop yield or crop yield coefficient of variation and (2) crop pollinator  
116 dependence to demonstrate the impact of pollinator limitation on agricultural production at  
117 a global scale. Here, we show that this approach can be adapted to assess the spatial  
118 distribution of pollination services over large areas.

119 We used a dataset reporting the yield of 56 major crops between 2000 and 2010, available at  
120 the spatial resolution of administrative departments in France and we combined it with  
121 information on crop pollinator dependence to produce maps of Pollination Services Index  
122 and index of Temporal Variation in Pollination Services. We calculate and examine the spatial  
123 patterns of these two indices over the French territory. We test their ecological relevance by  
124 examining their correlations with two known indicators of drivers of pollinator communities  
125 and activities: the Relative Pollination Potential (Zulian et al., 2013), an indicator based on  
126 habitat and climate suitability for wild bees; the High Nature Value index, an indicator of  
127 extensive agricultural practices. We discuss the potential limitations and biases of this new  
128 approach for the assessment of the pollination services. We conclude that our approach,  
129 which is easily transferable to other datasets, could be used to monitor spatial and temporal  
130 variation in the pollination services from local to regional scales, depending on availability

131 and spatial resolution of crop yield data.

132

## 133 **2. Materials and methods**

134 Countless definitions of the pollination services exist (see e.g. Liss et al., 2013). In the  
135 following, pollination services are defined as the relative increase in crop yield resulting from  
136 pollen deposition by animal pollinators.

137

### 138 2.1. Crop dataset and pollinator dependence

139 Annual yields of 133 crops were retrieved from the *Service de la Statistique et de la*  
140 *Prospective* of the French ministry of agriculture  
141 (<http://accres.agriculture.gouv.fr/disar/faces/>) for each of the 95 administrative departments  
142 of France (mean area = 5770 km<sup>2</sup>), except Paris, and for the years 2000 to 2010. We selected  
143 59 crops that produce fruits or seeds for direct human consumption, therefore excluding  
144 crops for which seeds are only used for breeding purposes or to grow vegetative parts for  
145 direct human use or for fodder. These crops were grown in a minimum of two departments  
146 (Avocados) and a maximum of 93 departments (Apples) between 2000 and 2010, with an  
147 average of 64 departments. The annual area grown with these crops varied between 8 ha  
148 (Avocados) and above 4 million ha (Bread wheat) with an average of 242,676 ha (see  
149 Appendix A Table A1 in Supplementary data for details). Following Klein et al. (2007), we  
150 classified crops on the basis of their level of pollinator dependence, defined as the  
151 percentage of yield reduction resulting from an absence of pollinators. The dependence  
152 categories were: none (0% yield reduction), little (<10% yield reduction), modest (10 to 39 %  
153 yield reduction), great (40 to 89% yield reduction), and essential ( $\geq$ 90% yield reduction). The  
154 level of pollinator dependence was unknown for three of 59 crop classes (Oleaginous,



155 Proteaginous, Other oleaginous), which were excluded from the analysis. The levels of  
156 pollinator dependence contained between 5 (“essential”) and 21 (“none”) crops,  
157 representing respectively 20,000 ha and 9 million ha each year in France (Table 1; see  
158 Appendix A Table A1 in Supplementary data).

159

## 160 2.2. Calculation of the Pollination Services and the Temporal Variation in 161 Pollination Services indices

162 As a preliminary step common to both indices, we performed for each crop a linear  
163 regression of crop yield against years to account for annual yield increases due to genetic  
164 progress and improvement of agricultural practices. We then extracted the residual yields  
165 from the regression.

166

### 167 *Pollination Services Index*

168 For the Pollination Services Index, residual yields were standardized within each crop (i.e. z-  
169 transformed) across the 95 departments to allow comparisons among crops. For each crop,  
170 the z-transformed residual can be interpreted as the yield surplus or deficit in a department  
171 with respect to the national mean. For each department, we then performed a linear mixed-  
172 effects regression of standardized residual yields against the level of pollinator dependence  
173 to describe the relative change in yield along a pollinator dependence gradient (Fig. 1). The  
174 mixed-effect model included a random effect of year, to account for non-independence of  
175 crop yield data within a year. We chose a linear regression over more flexible models because  
176 each crop pollinator dependence class is expected to be impacted by pollinator shortage in  
177 direct proportion to its pollinator dependence, by definition of the latter. We defined the  
178 Pollination Services Index as the slope of this linear regression. The use of z-transformed

179 residuals has two important implications for the interpretation of the index.

180 First, our approach does not compare absolute yields, but instead the position of crop yields  
181 with respect to the national mean (for a given crop), across levels of pollinator dependence.  
182 In other words, a positive slope in a department indicates that the pollinator-dependent  
183 crops fare better than the national mean, while pollinator-independent crops have yield  
184 equivalent to, or below, the national mean (Fig. 1, Bouches-du-Rhône department). Hence in  
185 such department, pollination does not appear as a major limitation for crop yield. In contrast,  
186 a negative slope in a department (e.g. Fig. 1, Eure department) tends to suggest that  
187 pollinator-dependent crops fare worse there than the national mean, while pollinator-  
188 independent crop yields are at or above the national mean. This could be interpreted as a  
189 sign of pollination deficit (but see next paragraph for a more careful interpretation).

190 Second, the z-transformation of the residual yields of each crop at the national level implies  
191 by definition that the distribution of z-transformed residual yields is centered on zero, with  
192 95% of the distribution between -2 and 2 *for each crop*. Hence, when all z-transformed  
193 residual crop yields, from all departments, are plotted together against pollinator  
194 dependence (Fig. 1), the collection of points is centered on zero throughout the range of  
195 pollination dependence values. If pollination services are equally effective across the study  
196 area, i.e. with all departments experiencing the same levels of pollination, the yield of a  
197 given crop in a given department should not depend on the pollinator-dependence of the  
198 crop, but mostly on local environmental conditions and farming practices. As a result, the  
199 slope of the linear regression of z-transformed residual crop yields against pollinator  
200 dependence for a given department is expected to be zero on average, i.e. with small values  
201 that do not differ significantly more zero more often than 5% of the time. In contrast, when  
202 pollination services are variable through space, we expect frequent (>>5%) significant

203 positive and negative slopes for the linear regression between residual yields and pollinator  
204 dependence. Because the z-transformed residual crop yield dataset is constrained mostly  
205 between -2 and 2 throughout the whole range of pollinator dependence, by symmetry any  
206 positive slope in one department will be compensated by a negative slope in another  
207 department, and vice versa (Fig. 1). Hence the Pollination Services Index only provides a  
208 relative, not an absolute, indicator of pollination effectiveness. It ranks the study area from  
209 sub-areas (here departments) in which pollination is most limiting (departments with highly  
210 negative slopes) to sub-areas in which pollination is less limiting (departments with highly  
211 positive slopes). In the latter departments where pollination is less limiting, crop yield might  
212 still be pollinator-limited, but to a lesser extent than in other departments.

213

#### 214 *Temporal Variation in Pollination Services*

215 For the Temporal Variation in Pollination Services, we also worked with residual yields  
216 obtained from the linear regression against years, but we added the mean yield in 2005 (the  
217 median year for our dataset) to residual yields for each crop, to work with positive values  
218 only. We then calculated for each crop and department the coefficient of variation of these  
219 values, which provided a standardized measure of yield variation. We performed a linear  
220 regression of the coefficient of variation of residuals yields against level of pollinator  
221 dependence for each department. We retained the slope of the linear relationship between  
222 yield variability and crop pollinator dependence as the departmental index of Temporal  
223 Variation in Pollination Services. Positive relationships between yield variability and  
224 pollinator dependence in a department indicate temporal instability of the pollination  
225 services, i.e. the temporal variability of yield is larger for pollinator-dependent vs. pollinator-  
226 independent crops during the study period. In contrast, a slope of zero suggests comparable

227 stability of the pollination services for pollinator-dependent and independent crops.

228

229 2.3. Correlations with the Relative Pollination Potential, another index of  
230 pollination services, and the High Nature Value index

231 We examined, using the Spearman's rank correlation coefficient, all the pairwise correlations  
232 between the Pollination Services Index, the Temporal Variation in Pollination Services, and  
233 the Relative Pollination Potential of Zulian et al. (2013). For each department, the Relative  
234 Pollination Potential is provided at a 100m x 100m pixel resolution; we calculated the average  
235 Relative Pollination Potential in agricultural areas as the mean over all farmland pixels of a  
236 department.

237 Both the Relative Pollination Potential and the Pollination Services Index exhibit a strong  
238 latitudinal gradient (see below). To examine the spatial patterns in both Pollination Services  
239 Index and Temporal Variation in Pollination Services, as well as their environmental  
240 correlates, while checking for biases due to the latitudinal gradient and particularly for a  
241 strong spatial autocorrelation in the data, we then used linear mixed models (Pinheiro and  
242 Bates, 2000). These models included three fixed explanatory variables that are likely to drive  
243 most of the latitudinal gradient, namely the Relative Pollination Potential (habitat  
244 availability), agricultural intensity and temperature (climate). We also included administrative  
245 regions ( $n = 22$ , i.e. administrative regions group about 4-5 neighbouring administrative  
246 departments) as a random variable in the model, to further account for unidentified drivers  
247 of the latitudinal gradient. We then checked that the residuals of both models were spatially  
248 uncorrelated using Moran's Index with inverse-distance weighting.

249 We used the High Nature Value index (Andersen et al., 2004; Pointereau et al., 2010, 2007)  
250 to characterize agricultural intensity. The High Nature Value index is defined in areas where

251 agriculture is a major land use. It aggregates three components at the municipality level  
252 (average area = 15 km<sup>2</sup>). The first component quantifies crop diversity and share of  
253 permanent grasslands, a proxy for the rotation system and the diversity of agricultural  
254 landscape. The second component characterizes extensive farming practices, defined by low  
255 pesticide and mineral fertilizer inputs, as well as low irrigation; it includes permanent  
256 grasslands and annual crops but not permanent crops. The third component estimates semi-  
257 natural habitat availability in agricultural areas, via a combination of number of traditional  
258 fruit trees, length of hedges and wood edges and number of farm ponds. All these  
259 components are likely to influence habitat quality and availability for pollinators and we  
260 expect the High Nature Value index to be positively related with the Pollination Services  
261 Index and negatively related with the Temporal Variation in Pollination Services. In each  
262 department, we calculated the average High Nature Value across all municipalities weighted  
263 by their farmland area (Agreste, 2016), for each of the three components of the High Nature  
264 Value index. Because the three components are strongly correlated with one another, we  
265 performed a principal component analysis (PCA) on these three components. We retained  
266 the first axis of the PCA only, which represents 69% of all variance and can be interpreted as  
267 a South-North gradient of increasing agricultural intensity (see Appendix A Fig. A1 in  
268 Supplementary data).

269 We calculated the mean annual temperature, a variable with major influence on insect  
270 activity and their pollination potential (Corbet et al., 1993) and potentially contributing  
271 strongly to the latitudinal gradient in pollination. For each department, we collected daily  
272 mean temperature between 2000 and 2010 from the ENSEMBLES dataset (Haylock et al.,  
273 2008), using data from the nearest E-OBS station in France on a 0.25 degree grid.

274

275 All analyses were performed using R version 3.2.4 (R Development Core Team, 2008). Indices  
276 were calculated and mapped using R packages *ggplot2* version 2.1.0 (Wickham, 2009), *sp*  
277 version 1.2.2 (Bivand et al., 2013; Pebesma and Bivand, 2005), *maptools* version 0.8.39  
278 (Bivand and Lewin-Koh, 2016), *classInt* version 0.1.23 (Bivand, 2015), *RColorBrewer* version  
279 1.1.2 (Neuwirth, 2014), *maps* version 3.1.0 (Becker and Wilks, 2016), *rgdal* version 1.1.3  
280 (Bivand et al., 2015), *rgeos* version 0.3.17 (Bivand and Rundel, 2016), *rje* version 1.9.0 (Evans,  
281 2014), *gridExtra* version 2.3.0 (Auguie, 2017), *nlme* version 3.1-131.1 (Pinheiro et al., 2017),  
282 *geo* version 1.4-3 (Hoskuldur et al., 2015), *car* version 2.1-6 (Fox and Weisberg, 2011), *gstat*  
283 version 1.1-5 (Pebesma, 2004) and *ape* version 5.1 (Paradis et al., 2004). Climate data were  
284 extracted using the R package *climateExtract* (Schmucki, NA), and *devtools* (Wickham and  
285 Chang, 2016).

286

### 287 **3. Results**

#### 288 3.1. Latitudinal gradient in the pollination services

289 We found a strong latitudinal gradient in the Pollination Services Index, with higher values in  
290 southern vs. northern France (Spearman correlation with latitude  $\rho = -0.64$ ,  $n = 95$ ,  $P <$   
291  $0.001$ ). Overall, the Pollination Services Index, i.e. the slope of the linear regression between  
292 standardized mean yield and level of pollinator dependence, varied between  $-1.78 \pm 0.19$   
293 and  $2.39 \pm 0.16$ , with significant negative values in 38 departments, most of them in northern  
294 France, and significant positive values in 31 departments (Fig. 2a). Individual relationships  
295 between standardized mean yield and level of pollinator dependence for all departments are  
296 plotted in Appendix A Fig. A2 in Supplementary data.

297

#### 298 3.2. Negative correlation between the pollination services and their temporal

299 variation

300 We found a significant negative but weak correlation between the Pollination Services Index  
301 and the Temporal Variation in Pollination Services (Spearman's  $\rho = -0.31$ ,  $n = 95$ ,  $P = 0.002$ ,  
302 Fig. 3a), i.e. departments with higher pollination services also tended to exhibit more stable  
303 pollination. The Temporal Variation in Pollination Services, i.e. the slope of the regression  
304 between yield variation and level of pollinator dependence, was significantly positive in 16  
305 departments (Fig. 2b, and see Appendix A Fig. A3 in Supplementary data for individual  
306 relationships in each department). Such positive relationships suggest that in those  
307 departments an appreciable fraction of the temporal variability in the yield of pollinator-  
308 dependent crops is caused by temporal variation in pollinator availability or effectiveness. In  
309 78 departments, the relationship was not significantly different from 0, indicating that  
310 pollinators do not appear to contribute much to yield temporal variation. The relationship  
311 between yield variability and level of pollinator dependence was significantly negative in a  
312 single department (Haute-Pyrénées). Departments with strong pollination instability tended  
313 to be located in northern France, as indicated by a weak latitudinal gradient (Spearman's  $\rho =$   
314  $0.19$ ,  $n = 95$ ,  $P = 0.059$ ) that was however not significant.

315

### 316 3.3. Relationships with the Relative Pollination Potential and the index of 317 agricultural intensity

318 We found a strong positive correlation between our Pollination Services Index and the  
319 Relative Pollination Potential of Zulian et al. (2013), (Spearman's  $\rho = 0.65$ ,  $n = 95$ ,  $P < 0.001$ ,  
320 Fig. 3b): both indices therefore appear to convey consistent information, and exhibit a strong  
321 latitudinal gradient with larger pollination potential and pollination services in southern  
322 France. In contrast, the Temporal Variation in Pollination Services and the Relative Pollination

323 Potential were not significantly related at the national scale, although there was a tendency  
324 for more variable pollination services in departments with a lower Relative Pollination  
325 Potential (Spearman's  $\rho = -0.19$ ,  $n = 95$ ,  $P = 0.06$ , Fig. 3c).  
326 When all drivers of pollination were assessed within a single model accounting for spatial  
327 autocorrelation, the Pollination Services Index was significantly correlated with the Relative  
328 Pollination Potential only, but not with agricultural intensity nor with temperature (Table 2).  
329 In contrast, the Temporal Variation in Pollination Services was not related with the Relative  
330 Pollination Potential, but was positively correlated with the index of agricultural intensity and  
331 negatively with mean annual temperature (Table 2).

332

#### 333 **4. Discussion**

334 This study is the first to our knowledge to provide spatial indices of the pollination services  
335 and their temporal variation nationwide directly on the basis of crop yields and pollinator  
336 dependence. Both indices exhibit strong geographical patterns, as indicated by appreciable  
337 differences among departments. Below we discuss the extent to which such differences  
338 among departments are indicative of true differences in the pollination services, and we  
339 outline future research directions to validate further these two indices.

340

341 4.1. Two independent indices show consistent patterns in the pollination services  
342 The Pollination Services Index and the Relative Pollination Potential (Zulian et al., 2013),  
343 although they were obtained from fully independent datasets and methods, exhibited a  
344 significant positive correlation, partly driven by a strong latitudinal gradient. The Pollination  
345 Services Index developed in this study is based on the measurable and final output of  
346 pollination services provided by all types of pollinators, crop yields. In contrast, the Relative



347 Pollination Potential combines literature and expert-assessment on the ecology of wild bee  
348 species only. As its name indicates, it only characterizes a *potential* for one type of pollination  
349 and has not been validated by data on pollinators or pollination so far. The most intuitive  
350 explanation for their positive correlation is a causal one: the Relative Pollination Potential is a  
351 proxy for the abundance and/or diversity of pollinator communities, which in turn controls  
352 the rate of pollen delivery to crops (Garibaldi et al., 2013; Kleijn et al., 2015). With this  
353 interpretation, both indices validate each other by producing consistent information from  
354 independent datasets. The causal role of pollinators is further supported by the latitudinal  
355 gradient in species richness observed in wild bees in Europe (Nieto et al., 2014). However,  
356 cross-validation and the congruence of spatial gradients are only circumstantial evidence,  
357 and a formal validation of all indices would require comparison with direct measurements of  
358 pollination effectiveness.

359 Despite the congruence of these independent pollination services proxies, i.e. the Pollination  
360 Services Index and the Relative Pollination Potential, our analysis remains correlative.

361 Therefore, we cannot exclude that the observed pattern is driven by other factors, among  
362 which the latitudinal gradient in environmental conditions, without an underlying causality.

363 One important question is whether the numerous other environmental factors that have  
364 recognized key impacts on crop yield (weather, soil type, farming practices including e.g. use  
365 of pesticides or fertilizers or fruit culling...) could bias the Pollination Services Index and for  
366 example create a latitudinal gradient in crop yield of pollinator-dependent crops that is not  
367 due to pollinators. The latitudinal gradient in the Pollination Services Index implies that  
368 pollinator-dependent crops tend to have higher yields in southern vs. northern France,  
369 whereas the opposite is true for pollinator-independent crops. Climate/weather, soil type or  
370 farming practices can only drive such pattern if their effects on crop yield were related to

371 pollinator-dependence through mechanisms that do not involve pollination. For sake of  
372 illustration, one can imagine a situation in which pollinator-dependent crops were more  
373 likely to be trees than pollinator-independent crops, and in which trees in general would  
374 grow better in warmer climates (two highly unlikely hypotheses). In this case, the yield of  
375 pollinator-dependent crops would be higher than the national mean in warm departments  
376 (southern France) and lower than the mean in northern France, which would create the  
377 same signal as the one we observe. However, we cannot think of an obvious mechanism,  
378 other than pollination, that would cause the effects of environmental factors on crop yield to  
379 vary systematically with the pollinator dependence of crops. In summary, we detect patterns  
380 of local adaptation such that pollinator-dependent crop have higher yields in southern vs.  
381 northern France. The most likely explanation for this pattern remains a gradient in pollination  
382 effectiveness, but we do not have the data here to make firm conclusions.

383 With these limitations in mind, the two pollination indices introduced here still show  
384 patterns consistent with some of the known effects of landscape on pollinators. Analyses  
385 controlling for spatial autocorrelation patterns showed that the Relative Pollination Potential  
386 was a significant correlate of the Pollination Services Index, while the index of agricultural  
387 intensity, as measured by a combination of in-field practices, crop diversity and landscape  
388 simplification, was not. This result suggests that the quality and diversity of landscapes may  
389 prevail over agricultural practices to explain pollination of pollinator-dependent crops. This  
390 absence of a relationship between pollination services and agriculture is at odds with  
391 numerous studies demonstrating negative effects of intensive agriculture on pollinators,  
392 particularly wild bees (Hendrickx et al., 2007; Le Féon et al., 2010; Koh et al., 2016) and the  
393 service they provide (Deguines et al., 2014). This somewhat surprising result should be  
394 tempered by several considerations. (1) The strong latitudinal gradient influencing all indices

395 and their environmental correlates makes it difficult to isolate individual correlations. (2)  
396 Although pollination services were not correlated with agricultural intensity on average, their  
397 temporal variability increased with the index of agricultural intensity, in agreement with most  
398 earlier results showing negative impacts of agriculture on pollinators and pollination. (3)  
399 Drivers not included in the Relative Pollination Potential (Zulian et al., 2013) or in the High  
400 Nature Value index may also influence pollinator communities. Among these drivers, other  
401 pollinator groups such as flies that are not accounted for in the Relative Pollination Potential  
402 could have a stronger functional role as they are known to be adapted to cooler climates  
403 (Elberling and Olesen, 1999). Pesticide use could also play an important role as it has been  
404 increasing steadily in France (Hossard et al., 2017), especially in northern France (“EuroStat,”  
405 2011). Pesticides are known to have strong effects on pollinators, particularly on wild bees  
406 (e.g. Brittain et al., 2010; Gill et al., 2012; Laycock et al., 2012) or in simplified landscapes  
407 such as those encountered in northern France (Park et al., 2015). (5) Finally, both indices may  
408 have been calculated at a spatial resolution too coarse to detect the local effects of within-  
409 field agricultural practices (see below).

410

#### 411 4.2. Caveats for interpretation of the index values

412 It is important to keep in mind that the Pollination Services Index does not provide an  
413 absolute, but only a relative assessment of the pollination services. This limitation is not a  
414 major one, but one should be careful that a positive value of the Pollination Services Index  
415 does not necessarily indicate sufficient pollination, but only a better pollination than in the  
416 other sampling units. With spatial variation in the pollination services, the analysis  
417 introduced here will produce values of the pollination services ranging from negative values  
418 that are significantly different from zero to positive values that are significantly different from

419 zero, regardless of the average effectiveness of pollination across the study area. Hence, the  
420 Pollination Services Index should only be used to compare areas, not to assess pollination in  
421 an absolute manner.

422 The quality of the assessment of crop pollinator dependence may also influence the two  
423 indices. Here, we have used available data, which are coarse: the classes of pollinator  
424 dependence can span up to 30%. In addition, within a given crop species, pollinator  
425 dependence is known to vary across varieties. For example in oilseed rape, plant breeders  
426 seek to develop less pollinator-dependent varieties to cope with pollinator declines  
427 (Hudewenz et al., 2014). As a result, farmers may grow less pollinator dependent varieties in  
428 areas with pollination deficit. This phenomenon, if it exists, should however make our  
429 Pollination Services Index conservative, i.e. the standardized crop yield should decrease less  
430 with increasing crop pollinator dependence than with an accurate measurement of crop  
431 pollinator dependence. In any case, both indices would benefit from more precise estimates  
432 of crop pollinator dependence.

433 The value of the Pollination Services Index may further be changed by our choice to work on  
434 residual crop yields, thereby removing any linear temporal trend in yield. This choice was  
435 made to avoid the confounding effects of genetic progress and improvement of agricultural  
436 practices and is justified when the temporal trend in crop yield is positive. However, for  
437 several crops, such as almonds or kiwis, the temporal trend in crop yield between 2000 and  
438 2010 was negative. For pollinator-dependent crops, a decline in pollination effectiveness is  
439 one likely cause of this decline in productivity. Our Pollination Services Index does not include  
440 this temporal decrease in crop yield and is therefore again conservative. The index was  
441 designed to detect differences in pollination effectiveness in space, but may have limited  
442 power to detect temporal trends in pollination effectiveness. To address temporal changes in

443 the pollination services, we recommend calculating the index without the initial step of linear  
444 regression of crop yield on years.

445 The index of Temporal Variation in Pollination Services may also be biased by standardization  
446 issues although it does not require z-transformation of yield. This index is calculated as the  
447 slope of the relationship between the coefficient of variation of the yield and crop pollinator  
448 dependence. Since the coefficient of variation is inversely proportional to mean yield, its  
449 variation may reflect variation in the mean, rather than in the variance of crop yields. In  
450 other words, departments with instable pollination may in fact be departments with low  
451 pollination effectiveness on average, an interpretation that is partly supported by the  
452 negative relationship between the Temporal Variation in Pollination Services and the  
453 Pollination Services Index. However, the alternative explanation, that departments with low  
454 effectiveness and high instability are characterized by poor and variable pollinator  
455 communities, is equally likely.

456

#### 457 4.3. Perspectives

458 To go further in determining the causal link between our indices and the pollination services,  
459 several perspectives could be explored. First, the two indices and the Relative Pollination  
460 Potential should be compared with variables describing the structure and composition of  
461 pollinator communities. Quantitative data on wild pollinators are few, especially on large  
462 spatial scales and for taxonomic groups beyond bees. However, recent initiatives to monitor  
463 pollinator communities via participatory science schemes may produce useful data in the  
464 short term (see e.g. the French photographic survey of pollinators, Deguines et al., 2012).

465 Second, the ultimate test for these indices would be a comparison with proper estimates of  
466 pollinator limitation using caging and pollen supplementation experiments (e.g. Hudewenz et

467 al., 2014). Third, a more accurate examination of the relationship between pollination  
468 services indices and its potential drivers, particularly agricultural intensity may require finer  
469 spatial resolutions of the indices. For example, there may be a mismatch in the departmental  
470 resolution at which the indices were calculated, and the spatial resolution at which  
471 agricultural practices or landscape structures influence pollinator population dynamics and  
472 behaviour (Steffan-Dewenter et al., 2002). However, the spatial resolution of both pollination  
473 services indices depends solely on the spatial resolution of data and there is no obstacle to  
474 obtaining them at much finer spatial resolution should crop yield data be available.

475

## 476 **5. Conclusion**

477 The Pollination Services Index and the Temporal Variation in Pollination Services are  
478 correlated in a consistent way, and their correlation with the Relative Pollination Potential  
479 and the index of agricultural intensity, respectively, are in line with the known influence of  
480 habitat quality and agricultural practices on pollinator communities. Despite the need for  
481 further work to ascertain causality, our indices pave the way to quantify and map pollination  
482 services at any spatial resolution in a cost-effective way over large areas. Such maps could  
483 help identifying areas suffering from deficit in pollination services and related drivers. They  
484 could also contribute to evaluate agricultural and conservation practices. Last but not least,  
485 they provide easy-to-grasp communication tools to raise awareness of stakeholders on  
486 pollination issues.

487

## 488 **Acknowledgements**

489 This work was inspired by EFESSE, the French Evaluation of Ecosystems and Ecosystem  
490 Services, an initiative of the French Ministry of Ecology, Sustainable Development and

491 Energy. We thank A. Girardin and A. Tibi for their help to recover crop yield data, R. Lorrillière  
492 for his help for data formatting, G. Zulian and M.L. Paracchini who provided data for the  
493 Relative Pollination Potential, P. Pointereau who provided data for the High Nature Value  
494 index, N. Deguines, N. Machon, P.L. Marchal, R.L. Preud’Homme, G. Lois, S. Pavoine, J. Vallet,  
495 G. Fried, F. Chiron, V. Devictor and B. Colas for their constructive comments.  
496 Funding: This project was supported by grants from the Région Île-de-France.

497

#### 498 **Authors’ contributions**

499 EP and CF conceived the ideas and designed methodology; GM, FA and EP collected the data;  
500 GM, CF and EP analysed the data; GM, CF, FA and EP led the writing of the manuscript. All  
501 authors contributed critically to the drafts and gave final approval for publication.

502

#### 503 **Appendix A. Supplementary data**

504 Supplementary data associated with this article can be found in the online version.

505

#### 506 **References**

- 507 Agreste, 2016. Agreste [WWW Document]. URL <http://agreste.agriculture.gouv.fr/>  
508 Aguilar, R., Ashworth, L., Galetto, L., Aizen, M.A., 2006. Plant reproductive susceptibility to habitat  
509 fragmentation: review and synthesis through a meta-analysis. *Ecology Letters* 9, 968–980.  
510 <https://doi.org/10.1111/j.1461-0248.2006.00927.x>  
511 Andersen, E., Baldock, D., Bennett, H., Beaufoy, G., Bignal, E., Brouwer, F., Elbersen, B., Eiden, G.,  
512 Godeschalk, F., Jones, G., McCracken, D., Nieuwenhuizen, W., van Eupen, M., Hennekens, S.,  
513 Zervas, G., 2004. Developing a High Nature Value Farming area indicator.  
514 Ashman, T.-L., Knight, T.M., Steets, J.A., Amarasekare, P., Burd, M., Campbell, D.R., Dudash, M.R.,  
515 Johnston, M.O., Mazer, S.J., Mitchell, R.J., Morgan, M.T., Wilson, W.G., 2004. Pollen  
516 limitation of plant reproduction: ecological and evolutionary causes and consequences.  
517 *Ecology* 85, 2408–2421. <https://doi.org/10.1890/03-8024>  
518 Auguie, B., 2017. gridExtra: Miscellaneous Functions for “Grid” Graphics.  
519 Becker, R.A., Wilks, A.R., 2016. maps: Draw Geographical Maps.  
520 Biesmeijer, J.C., Roberts, S.P.M., Reemer, M., Ohlemüller, R., Edwards, M., Peeters, T., Schaffers, A.P.,  
521 Potts, S.G., Kleukers, R., Thomas, C.D., Settele, J., Kunin, W.E., 2006. Parallel Declines in

522 Pollinators and Insect-Pollinated Plants in Britain and the Netherlands. *Science* 313, 351–354.  
523 <https://doi.org/10.1126/science.1127863>

524 Bivand, R.S., Pebesma, E.J., Gomez-Rubio, V., 2013. *Applied spatial data analysis with R*, Second  
525 edition.

526 Bivand, R.S., 2015. *classInt: Choose Univariate Class Intervals*.

527 Bivand, R.S., Keitt, T., Rowlingson, B., 2015. *rgdal: Bindings for the Geospatial Data Abstraction  
528 Library*.

529 Bivand, R.S., Lewin-Koh, N., 2016. *maptools: Tools for Reading and Handling Spatial Objects*.

530 Bivand, R.S., Rundel, C., 2016. *rgeos: Interface to Geometry Engine - Open Source (GEOS)*.

531 Brittain, C.A., Vighi, M., Bommarco, R., Settele, J., Potts, S.G., 2010. Impacts of a pesticide on  
532 pollinator species richness at different spatial scales. *Basic and Applied Ecology* 11, 106–115.  
533 <https://doi.org/10.1016/j.baae.2009.11.007>

534 Corbet, S.A., Fussell, M., Ake, R., Fraser, A., Gunson, C., Savage, A., Smith, K., 1993. Temperature and  
535 the pollinating activity of social bees. *Ecological Entomology* 18, 17–30.  
536 <https://doi.org/10.1111/j.1365-2311.1993.tb01075.x>

537 Daily, G., 1997. *Nature's Services*. Island Press, Washington, DC.

538 Deguines, N., Julliard, R., de Flores, M., Fontaine, C., 2012. The Whereabouts of Flower Visitors:  
539 Contrasting Land-Use Preferences Revealed by a Country-Wide Survey Based on Citizen  
540 Science. *PLoS ONE* 7, e45822. <https://doi.org/10.1371/journal.pone.0045822>

541 Deguines, N., Jono, C., Baude, M., Henry, M., Julliard, R., Fontaine, C., 2014. Large-scale trade-off  
542 between agricultural intensification and crop pollination services. *Frontiers in Ecology and  
543 the Environment* 12, 212–217. <https://doi.org/10.1890/130054>

544 Elberling, H., Olesen, J.M., 1999. The structure of a high latitude plant-flower visitor system: the  
545 dominance of flies. *Ecography* 22, 314–323. <https://doi.org/10.1111/j.1600-0587.1999.tb00507.x>

547 European Commission, 2011. *Our Life Insurance, Our Natural Capital: An EU Biodiversity Strategy to  
548 2020*.

549 EuroStat, 2011.

550 Evans, R., 2014. *rje: Miscellaneous useful functions*.

551 Fontaine, C., Dajoz, I., Meriguet, J., Loreau, M., 2005. Functional Diversity of Plant–Pollinator  
552 Interaction Webs Enhances the Persistence of Plant Communities. *PLoS Biology* 4, e1.  
553 <https://doi.org/10.1371/journal.pbio.0040001>

554 Fox, J., Weisberg, S., 2011. *An {R} Companion to Applied Regression, Second Edition*.

555 Garibaldi, L.A., Aizen, M.A., Klein, A.M., Cunningham, S.A., Harder, L.D., 2011a. Global growth and  
556 stability of agricultural yield decrease with pollinator dependence. *Proceedings of the  
557 National Academy of Sciences* 108, 5909–5914. <https://doi.org/10.1073/pnas.1012431108>

558 Garibaldi, L.A., Steffan-Dewenter, I., Kremen, C., Morales, J.M., Bommarco, R., Cunningham, S.A.,  
559 Carvalheiro, L.G., Chacoff, N.P., Dudenhöffer, J.H., Greenleaf, S.S., Holzschuh, A., Isaacs, R.,  
560 Krewenka, K., Mandelik, Y., Mayfield, M.M., Morandin, L.A., Potts, S.G., Ricketts, T.H.,  
561 Szentgyörgyi, H., Viana, B.F., Westphal, C., Winfree, R., Klein, A.M., 2011b. Stability of  
562 pollination services decreases with isolation from natural areas despite honey bee visits:  
563 Habitat isolation and pollination stability. *Ecology Letters* 14, 1062–1072.  
564 <https://doi.org/10.1111/j.1461-0248.2011.01669.x>

565 Garibaldi, L.A., Steffan-Dewenter, I., Winfree, R., Aizen, M.A., Bommarco, R., Cunningham, S.A.,  
566 Kremen, C., Carvalheiro, L.G., Harder, L.D., Afik, O., Bartomeus, I., Benjamin, F., Boreux, V.,  
567 Cariveau, D., Chacoff, N.P., Dudenhoffer, J.H., Freitas, B.M., Ghazoul, J., Greenleaf, S.,  
568 Hipolito, J., Holzschuh, A., Howlett, B., Isaacs, R., Javorek, S.K., Kennedy, C.M., Krewenka,  
569 K.M., Krishnan, S., Mandelik, Y., Mayfield, M.M., Motzke, I., Munyuli, T., Nault, B.A., Otieno,  
570 M., Petersen, J., Pisanty, G., Potts, S.G., Rader, R., Ricketts, T.H., Rundlof, M., Seymour, C.L.,  
571 Schuepp, C., Szentgyorgyi, H., Taki, H., Tschardtke, T., Vergara, C.H., Viana, B.F., Wanger, T.C.,  
572 Westphal, C., Williams, N., Klein, A.M., 2013. Wild Pollinators Enhance Fruit Set of Crops



573           Regardless of Honey Bee Abundance. *Science* 339, 1608–1611.  
574           <https://doi.org/10.1126/science.1230200>

575 Garibaldi, L.A., Carvalheiro, L.G., Vaissiere, B.E., Gemmill-Herren, B., Hipolito, J., Freitas, B.M., Ngo,  
576 H.T., Azzu, N., Saez, A., Astrom, J., An, J., Blochtein, B., Buchori, D., Garcia, F.J.C., Oliveira da  
577 Silva, F., Devkota, K., Ribeiro, M. d. F., Freitas, L., Gaglianone, M.C., Goss, M., Irshad, M.,  
578 Kasina, M., Filho, A.J.S.P., Kiill, L.H.P., Kwapong, P., Parra, G.N., Pires, C., Pires, V., Rawal, R.S.,  
579 Rizali, A., Saraiva, A.M., Veldtman, R., Viana, B.F., Witter, S., Zhang, H., 2016. Mutually  
580 beneficial pollinator diversity and crop yield outcomes in small and large farms. *Science* 351,  
581 388–391. <https://doi.org/10.1126/science.aac7287>

582 Gill, R.J., Ramos-Rodriguez, O., Raine, N.E., 2012. Combined pesticide exposure severely affects  
583 individual- and colony-level traits in bees. *Nature* 491, 105–108.  
584 <https://doi.org/10.1038/nature11585>

585 Haylock, M.R., Hofstra, N., Klein Tank, A.M.G., Klok, E.J., Jones, P.D., New, M., 2008. A European daily  
586 high-resolution gridded data set of surface temperature and precipitation for 1950–2006.  
587 *Journal of Geophysical Research* 113. <https://doi.org/10.1029/2008JD010201>

588 Hendrickx, F., Maelfait, J.-P., Van Wingerden, W., Schweiger, O., Speelmans, M., Aviron, S.,  
589 Augenstein, I., Billeter, R., Bailey, D., Bukacek, R., Burel, F., Diekötter, T., Dirksen, J., Herzog,  
590 F., Liira, J., Roubalova, M., Vandomme, V., Bugter, R., 2007. How landscape structure, land-  
591 use intensity and habitat diversity affect components of total arthropod diversity in  
592 agricultural landscapes: Agricultural factors and arthropod biodiversity. *Journal of Applied*  
593 *Ecology* 44, 340–351. <https://doi.org/10.1111/j.1365-2664.2006.01270.x>

594 Hoskuldur, B., Sigurdur Thor, J., Arni, M., Bjarki Thor, E., 2015. geo: Draw and Annotate Maps,  
595 Especially Charts of the North Atlantic.

596 Hossard, L., Guichard, L., Pelosi, C., Makowski, D., 2017. Lack of evidence for a decrease in synthetic  
597 pesticide use on the main arable crops in France. *Science of The Total Environment* 575, 152–  
598 161. <https://doi.org/10.1016/j.scitotenv.2016.10.008>

599 Hudewenz, A., Pufal, G., BöGeholz, A.-L., Klein, A.-M., 2014. Cross-pollination benefits differ among  
600 oilseed rape varieties. *The Journal of Agricultural Science* 152, 770–778.  
601 <https://doi.org/10.1017/S0021859613000440>

602 Kleijn, D., Winfree, R., Bartomeus, I., Carvalheiro, L.G., Henry, M., Isaacs, R., Klein, A.-M., Kremen, C.,  
603 M’Gonigle, L.K., Rader, R., Ricketts, T.H., Williams, N.M., Lee Adamson, N., Ascher, J.S., Báldi,  
604 A., Batáry, P., Benjamin, F., Biesmeijer, J.C., Blitzler, E.J., Bommarco, R., Brand, M.R.,  
605 Bretagnolle, V., Button, L., Cariveau, D.P., Chifflet, R., Colville, J.F., Danforth, B.N., Elle, E.,  
606 Garratt, M.P.D., Herzog, F., Holzschuh, A., Howlett, B.G., Jauker, F., Jha, S., Knop, E.,  
607 Krewenka, K.M., Le Féon, V., Mandelik, Y., May, E.A., Park, M.G., Pisanty, G., Reemer, M.,  
608 Riedinger, V., Rollin, O., Rundlöf, M., Sardiñas, H.S., Scheper, J., Sciligo, A.R., Smith, H.G.,  
609 Steffan-Dewenter, I., Thorp, R., Tscharrntke, T., Verhulst, J., Viana, B.F., Vaissière, B.E.,  
610 Veldtman, R., Westphal, C., Potts, S.G., 2015. Delivery of crop pollination services is an  
611 insufficient argument for wild pollinator conservation. *Nature Communications* 6, 7414.  
612 <https://doi.org/10.1038/ncomms8414>

613 Klein, A.-M., Vaissiere, B.E., Cane, J.H., Steffan-Dewenter, I., Cunningham, S.A., Kremen, C.,  
614 Tscharrntke, T., 2007. Importance of pollinators in changing landscapes for world crops.  
615 *Proceedings of the Royal Society B: Biological Sciences* 274, 303–313.  
616 <https://doi.org/10.1098/rspb.2006.3721>

617 Koh, I., Lonsdorf, E.V., Williams, N.M., Brittain, C., Isaacs, R., Gibbs, J., Ricketts, T.H., 2016. Modeling  
618 the status, trends, and impacts of wild bee abundance in the United States. *Proceedings of*  
619 *the National Academy of Sciences* 113, 140–145. <https://doi.org/10.1073/pnas.1517685113>

620 Laycock, I., Lenthall, K.M., Barratt, A.T., Cresswell, J.E., 2012. Erratum to: Effects of imidacloprid, a  
621 neonicotinoid pesticide, on reproduction in worker bumble bees (*Bombus terrestris*).  
622 *Ecotoxicology* 21, 1946–1946. <https://doi.org/10.1007/s10646-012-0974-4>

623 Le Féon, V., Schermann-Legionnet, A., Delettre, Y., Aviron, S., Billeter, R., Bugter, R., Hendrickx, F.,  
624 Burel, F., 2010. Intensification of agriculture, landscape composition and wild bee  
625 communities: A large scale study in four European countries. *Agriculture, Ecosystems &*  
626 *Environment* 137, 143–150. <https://doi.org/10.1016/j.agee.2010.01.015>

627 Liss, K.N., Mitchell, M.G., MacDonald, G.K., Mahajan, S.L., Méthot, J., Jacob, A.L., Maguire, D.Y.,  
628 Metson, G.S., Ziter, C., Dancose, K., Martins, K., Terrado, M., Bennett, E.M., 2013. Variability  
629 in ecosystem service measurement: a pollination service case study. *Frontiers in Ecology and*  
630 *the Environment* 11, 414–422. <https://doi.org/10.1890/120189>

631 Millennium Ecosystem Assessment (MA), 2005. *Ecosystems and Human Well-being: Synthesis*. Island  
632 Press, Washington, DC.

633 Neuwirth, E., 2014. RColorBrewer: ColorBrewer Palettes.

634 Nieto, A., Roberts, S.P.M., Kemp, J., Rasmont, P., Kuhlmann, M., García Criado, M., Biesmeijer, J.C.,  
635 Bogusch, P., Dathe, H.H., de la Rúa, P., 2014. European Red List of bees, Luxembourg:  
636 Publication Office of the European Union. ed. Luxembourg.

637 Paradis, E., Claude, J., Strimmer, K., 2004. APE: Analyses of Phylogenetics and Evolution in R  
638 language. *Bioinformatics* 20, 289–290. <https://doi.org/10.1093/bioinformatics/btg412>

639 Park, M.G., Blitzler, E.J., Gibbs, J., Losey, J.E., Danforth, B.N., 2015. Negative effects of pesticides on  
640 wild bee communities can be buffered by landscape context. *Proceedings of the Royal*  
641 *Society B: Biological Sciences* 282, 20150299. <https://doi.org/10.1098/rspb.2015.0299>

642 Pebesma, E.J., 2004. Multivariable geostatistics in S: the gstat package. *Computers & Geosciences* 30,  
643 683–691. <https://doi.org/10.1016/j.cageo.2004.03.012>

644 Pebesma, E.J., Bivand, R.S., 2005. *Classes and methods for spatial data: the sp Package*.

645 Pinheiro, J.C., Bates, D.M., 2000. *Mixed-Effects Models in S and S-PLUS*. Springer, New York.

646 Pinheiro, J., Bates, D., DebRoy, S., Sarkar, D., R Development Core Team, 2017. nlme: Linear and  
647 Nonlinear Mixed Effects Models.

648 Pointereau, P., Paracchini, M.L., Terres, J.-M., Jiguet, F., Bas, Y., Biala, K., 2007. Identification of High  
649 Nature Value farmland in France through statistical information and farm practice surveys.

650 Pointereau, P., Doxa, A., Coulon, F., Jiguet, F., Paracchini, M.L., 2010. Analysis of spatial and temporal  
651 variations of High Nature Value farmland and links with changes in bird populations: a study  
652 on France.

653 Potts, S.G., Roberts, S.P.M., Dean, R., Marris, G., Brown, M.A., Jones, R., Neumann, P., Settele, J.,  
654 2010. Declines of managed honey bees and beekeepers in Europe. *Journal of Apicultural*  
655 *Research* 49, 15–22. <https://doi.org/10.3896/IBRA.1.49.1.02>

656 Potts, S.G., Imperatriz-Fonseca, V., Ngo, H.T., Biesmeijer, J.C., Breeze, T.D., Dicks, L.V., Garibaldi, L.A.,  
657 Hill, R., Settele, J., Vanbergen, A.J., 2016. IPBES (2016). The assessment report of the  
658 Intergovernmental Science-Policy Platform on Biodiversity and Ecosystem Services on  
659 pollinators, pollination and food production. Secretariat of the Intergovernmental Science-  
660 Policy Platform on Biodiversity and Ecosystem Services, Bonn, Germany.

661 R Development Core Team, 2008. *R: A language and environment for statistical computing*.

662 Schmucki, R., NA. climateExtract: Extract Climate Data From a Local NETCDF File.

663 Steffan-Dewenter, I., Münzenberg, U., Bürger, C., Thies, C., Tscharnke, T., 2002. Scale-dependent  
664 effects of landscape context on three pollinator guilds. *Ecology* 83, 1421–1432.  
665 [https://doi.org/10.1890/0012-9658\(2002\)083\[1421:SDEOLC\]2.0.CO;2](https://doi.org/10.1890/0012-9658(2002)083[1421:SDEOLC]2.0.CO;2)

666 vanEngelsdorp, D., Hayes, J., Underwood, R.M., Caron, D., Pettis, J., 2011. A survey of managed  
667 honey bee colony losses in the USA, fall 2009 to winter 2010. *Journal of Apicultural Research*  
668 50, 1–10. <https://doi.org/10.3896/IBRA.1.50.1.01>

669 Wickham, H., 2009. *Ggplot2: Elegant Graphics for Data Analysis*.

670 Wickham, H., Chang, W., 2016. devtools: Tools to Make Developing R Packages Easier.

671 Williams, I.H., 1994. The dependence of crop production within the European Union on pollination by  
672 honey bees. *Agricultural Zoology Reviews (United Kingdom)* 6: 229-257.

673 Zulian, G., Maes, J., Paracchini, M.L., 2013. Linking Land Cover Data and Crop Yields for Mapping and  
674 Assessment of Pollination Services in Europe. *Land* 2, 472–492.  
675 <https://doi.org/10.3390/land2030472>  
676

677

678 TABLES AND FIGURES

679 Color should be used for figures 1, 2 and 3.

680

681 **Table 1** Levels of pollinator dependence and spatial coverage of 56 major crops in France  
682 between 2000 and 2010. “Average total area” is the total annual area sown with a given type  
683 of crop, averaged over the 11 years.

684

685 **Table 2** Correlations between the Pollination Services Index (PSI) or the Temporal Variation  
686 in Pollination Services (TVPS) and environmental variables, as inferred from a linear mixed  
687 model with administrative regions as random effect.

688

689 **Fig. 1.** Z-transformed residual crop yields as a function of crop pollinator dependence for the  
690 full dataset. Each point corresponds to a crop from a department. The colors highlight data  
691 from two examples of department with extreme values of the Pollination Services Index: in  
692 orange, Bouches-du-Rhône, a department where residual yields are positively related with  
693 pollinator dependence (slope =  $2.42 \pm 0.16$ ); in blue, Eure, a department where residual  
694 yields are negatively related with pollinator dependence (slope =  $-1.69 \pm 0.14$ ). The grey  
695 horizontal line is the regression over the full dataset (slope = 0). For sake of readability, the x-  
696 coordinate of each crop has been slightly shifted such that crops within a given class of  
697 pollinator dependence are not plotted on top of each other.

698

699 **Fig. 2.** Maps of the Pollination Services Index (a) and the Temporal Variation in Pollination  
700 Services (b) across France, at the spatial resolution of departments. Colors indicate the slope  
701 of the relationship between relative mean yield (a) or the coefficient of variation of the yield  
702 (b) and the level of crop pollinator dependence. Stars indicate departments with a significant

703 relationship.

704

705 **Fig. 3.** Relationships among three pollination indices in France: (a) Pollination Services Index

706 vs. Temporal Variation of Pollination Services; (b) Pollination Services Index vs. Relative

707 Pollination Potential; (c), Temporal Variation in Pollination Services vs. Relative Pollination

708 Potential. Each point represents a department; colors indicate the latitude of the centroid of

709 the department.

710

<b>Median level of pollinator dependence (%)</b>	<b>Positive impact of animal pollination on production of crops</b>	<b>Number</b>	<b>Mean number of departments</b>	<b>Average total area per year (ha)</b>
0	no increase	21	95.0	9,753,839
5	little	8	92.2	57,721
25	modest	10	93.6	1,998,652
65	great	12	93.1	129,423
95	essential	5	84.8	21,488

714 **Table 1** Levels of pollinator dependence and spatial coverage of 56 major crops in France

715 between 2000 and 2010. “Average total area” is the total annual area sown with a given type

716 of crop, averaged over the 11 years.

<b>Response Variable</b>	<b>Independent variables</b>	<b>Estimate</b>	<b>df</b>	<b>Chisq</b>	<b>P value</b>
PSI	Relative Pollination Potential	8.33	1,70	8.22	0.004**
	Index of agricultural intensity	-0.03	1,70	0.11	0.743
	Mean annual temperature	0.07	1,70	0.92	0.338
TVPS	Relative Pollination Potential	1.04	1,70	1.97	0.161
	Index of agricultural intensity	0.05	1,70	5.49	0.019*
	Mean annual temperature	-0.04	1,70	4.21	0.040*

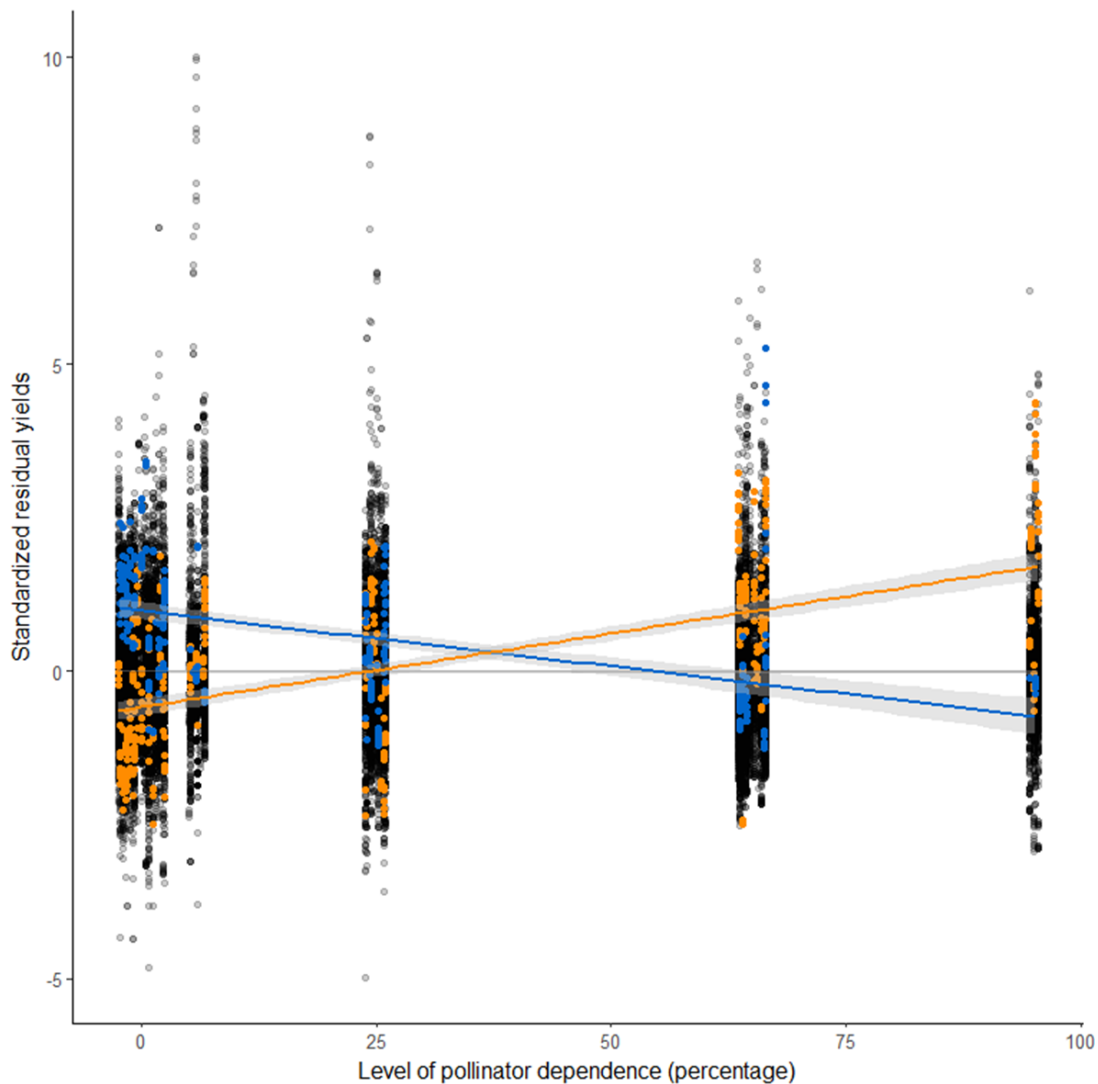
719

720 **Table 2** Correlations between the Pollination Services Index (PSI) or the Temporal Variation

721 in Pollination Services (TVPS) and environmental variables, as inferred from a linear mixed

722 model with administrative regions as random effect.

723 **Fig. 1.** Z-transformed residual crop yields as a function of crop pollinator dependence for the  
724 full dataset. Each point corresponds to a crop from a department. The colors highlight data  
725 from two examples of department with extreme values of the Pollination Services Index: in  
726 orange, Bouches-du-Rhône, a department where residual yields are positively related with  
727 pollinator dependence (slope = 2.39 +/- 0.16); in blue, Eure, a department where residual  
728 yields are negatively related with pollinator dependence (slope = -1.78 +/- 0.19). The grey  
729 horizontal line is the regression over the full dataset (slope = 0). For sake of readability, the x-  
730 coordinate of each crop has been slightly shifted such that crops within a given class of  
731 pollinator dependence are not plotted on top of each other.



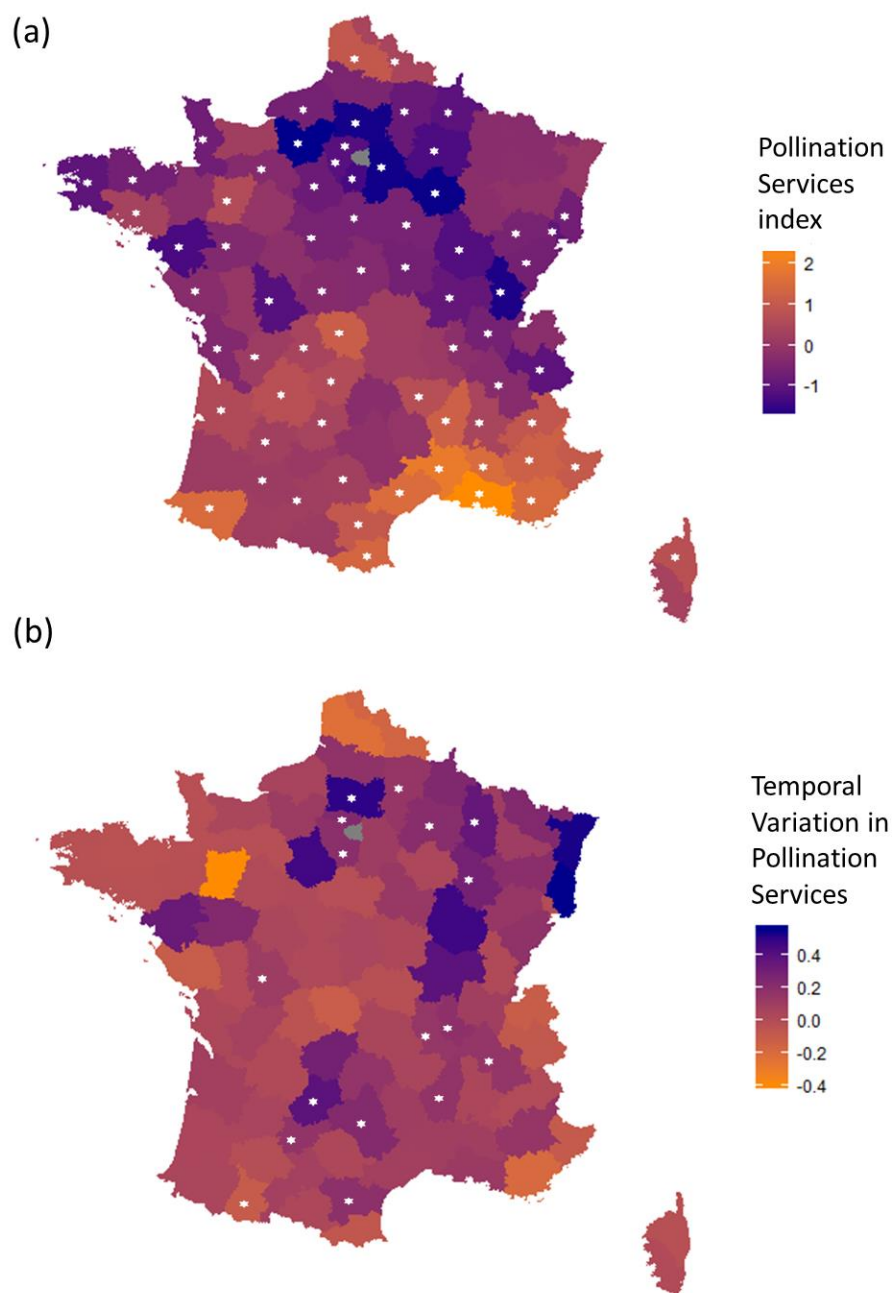
732

733



734 **Fig. 2.** Maps of the Pollination Services Index (a) and the Temporal Variation in Pollination  
735 Services (b) across France, at the spatial resolution of departments. Colors indicate the slope  
736 of the relationship between relative mean yield (a) or the coefficient of variation of the yield  
737 (b) and the level of crop pollinator dependence. Stars indicate departments with a significant  
738 relationship.

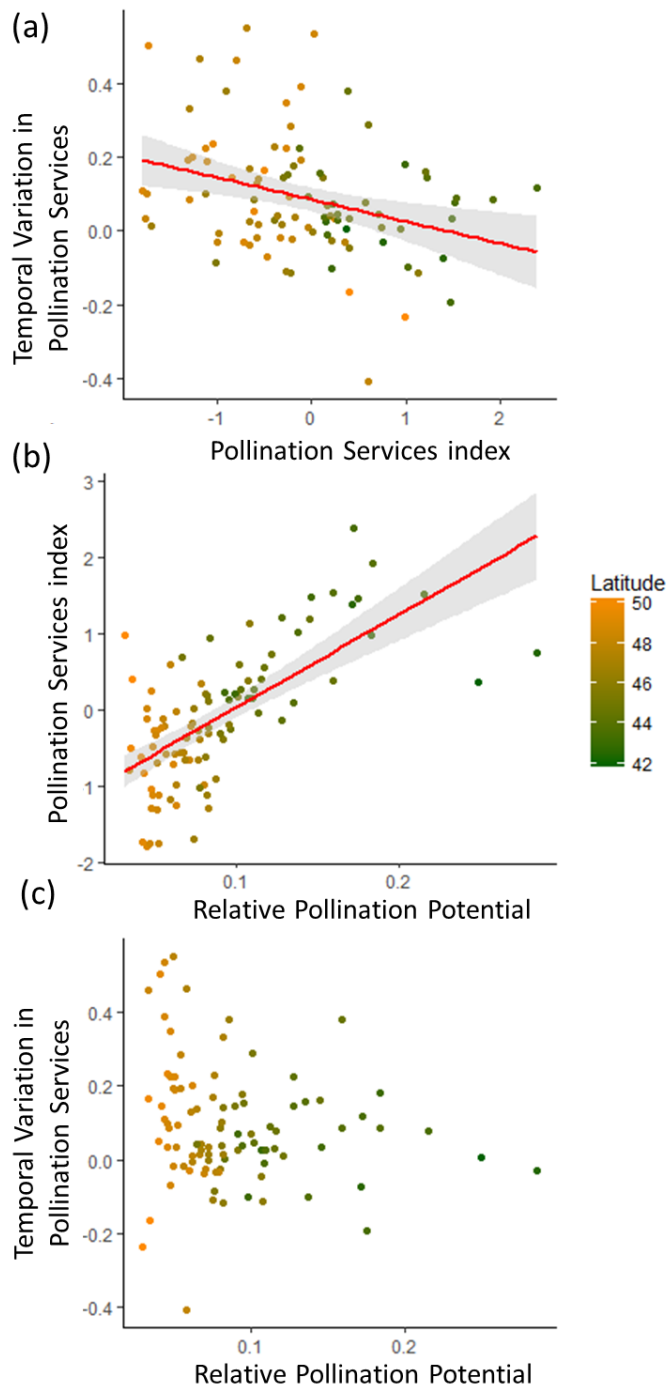
739



740

741

742 **Fig. 3.** Relationships among three pollination indices in France: (a) Pollination Services Index  
 743 vs. Temporal Variation of Pollination Services; (b) Pollination Services Index vs. Relative  
 744 Pollination Potential; (c), Temporal Variation in Pollination Services vs. Relative Pollination  
 745 Potential. Each point represents a department; colors indicate the latitude of the centroid of  
 746 the department.



747

748

749 **Appendix A. Supplementary Data**

750 Color should be used for figures A1, A3, A4.

751

752 Table A1. List of the 56 crops grown in 95 departments during the 2000-2010 period.

753

754 Fig. A1. PCA on the three High Nature Value components. The ordination diagram is plotted  
755 for axes 1 and 2 (a). The distribution of eigenvalues is shown in (b).

756

757 Fig. A2. Changes in standardized mean yield with increasing level of crop pollinator  
758 dependence for each of the 95 departments. Dots represent crop yield and the line indicates  
759 the estimate from the linear regression model described in the main text. Colors indicate the  
760 sign and slope of the relationship between relative mean yield and the level of crop  
761 pollinator dependence, as for Fig. 1.

762

763 Fig. A3. Changes in yield stability with increasing level of crop pollinator dependence for each  
764 of the 95 departments. Dots represent crop yield and the line indicates the estimate from the  
765 linear regression model described in the main text. Colors indicate the slope of the  
766 relationship between the coefficient of variation of the yield and the level of crop pollinator  
767 dependence, as for Fig. 1.

768

769 Table A1. List of the 56 crops grown in 95 departments during the 2000-2010 period.

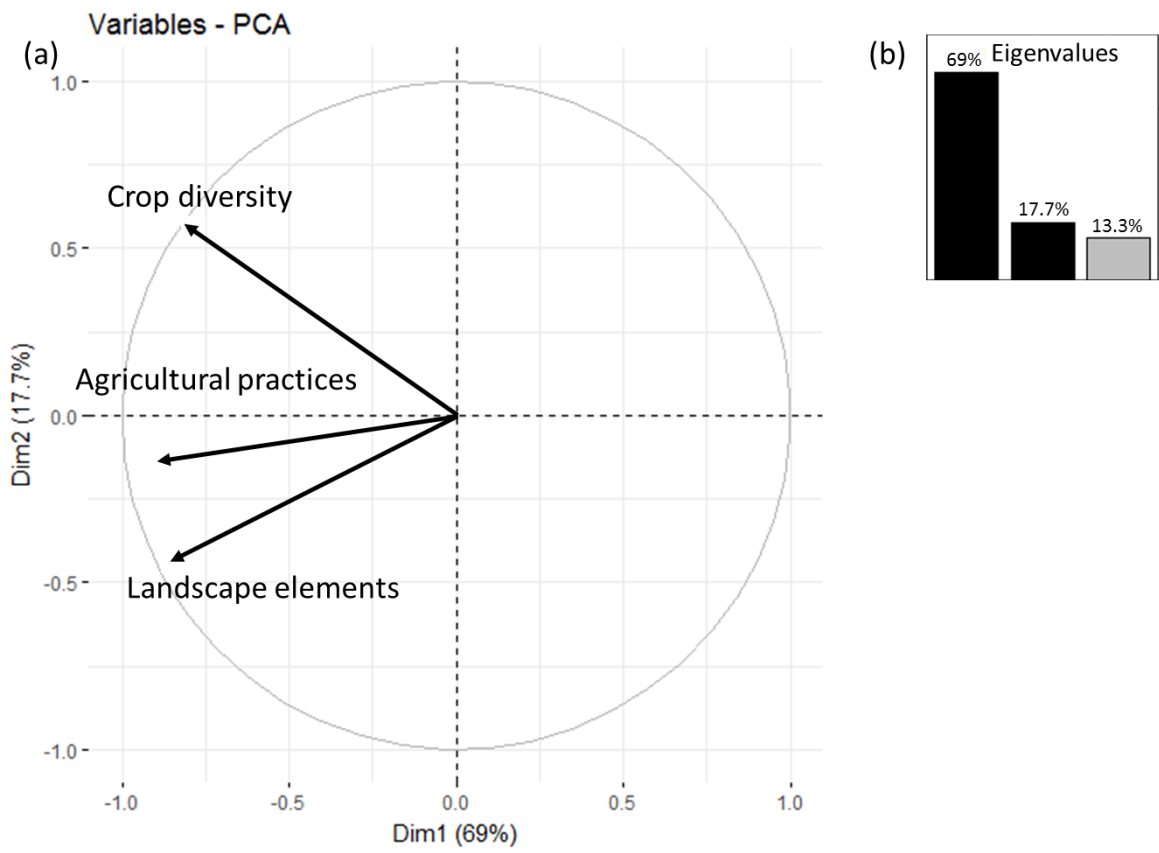
Crop name	Taxonomic group	Level of pollinator dependence	Positive impact of animal pollination on production	Number of departments growing the crop	Average total area per year (ha)	Average yield per ha (100 kg/ha)
Kiwifruits	<i>Actinidia deliciosa</i>	95	essential	42	4161	5377.18
Total oat	<i>Avena sativa</i>	0	no increase	88	100993.36	3572.45
Other rapeseeds	<i>Brassica napus</i> and <i>Brassica rapa</i> subsp. <i>oleifera</i>	25	modest	85	1239754.45	2469.55
Peppers	<i>Capsicum annuum</i>	5	little	56	520.64	14705.36
Chestnuts	<i>Castanea sativa</i>	25	modest	44	7030.09	527.73
Watermelons	<i>Citrullus lanatus</i>	95	essential	24	156.18	5269.82
Clementines and mandarins	<i>Citrus clementina</i> and <i>Citrus nobilis</i>	5	little	4	1650.91	403.09
Grapefruits	<i>Citrus paradisi</i>	5	little	4	216.27	340.45
Hazelnuts	<i>Corylus avellana</i> var. <i>grandis</i>	0	no increase	53	2919.18	722.45
Muskmelons	<i>Cucumis melo</i>	95	essential	64	12504.36	9385.27
Cucumbers	<i>Cucumis sativus</i>	65	great	80	546.73	123404.45
Gherkins	<i>Cucumis sativus</i>	65	great	47	227.73	5222.36
Zucchini	<i>Cucurbita pepo</i>	95	essential	87	2539.82	26212.09
Squashes	<i>Cucurbitaceae</i>	95	essential	86	2126.36	18566.91
Figs	<i>Ficus carica</i>	25	modest	19	415	915.45
Strawberries	<i>Fragaria x ananassa</i>	25	modest	92	3498.36	10864.36
Soybean	<i>Glycine max</i>	25	modest	68	59235.45	1411
Sunflower seeds	<i>Helianthus annuus</i>	25	modest	80	611718.55	1837.55
Total barley	<i>Hordeum vulgare</i> and <i>Hordeum hexasticon</i>	0	no increase	89	1630336.82	4870.64
Nuts	<i>Juglans regia</i>	0	no increase	69	16420.45	1044.45
Lentils	<i>Lens culinaris</i>	0	no increase	56	8195	456.45
Flaxseeds	<i>Linum usitatissimum</i>	5	little	69	10352.45	1007.82
Sweet Lupines	<i>Lupinus albus</i>	0	no increase	73	4864.36	1349.91
Tomatoes	<i>Lycopersicon esculentum</i>	5	little	88	4736.55	92174.45
Cider apples	<i>Malus domestica</i>	65	great	64	11251.36	7818.09
Table apples	<i>Malus domestica</i>	65	great	93	45964.09	28771.18
Other unmixed cereals	NA	0	no increase	61	28786.64	1407.18
Melanges of cereals (excluding meteil)	NA	0	no increase	82	49438.18	2345.91
Olives	<i>Olea europaea</i>	0	no increase	16	16535.45	187.64
Rice	<i>Oriza sativa</i>	0	no increase	3	18643.45	161.45
Avocados	<i>Persea americana</i>	65	great	2	8.45	98.27
Shelled beans	<i>Phaseolus vulgaris</i>	5	little	73	7003.09	3305.55
Dry beans	<i>Phaseolus vulgaris</i>	5	little	50	2871.18	999.36
Green beans	<i>Phaseolus vulgaris</i>	5	little	92	30369.64	8746.36
Protein peas	<i>Pisum sativum</i>	0	no increase	87	262965.64	3000.18
Green peas	<i>Pisum sativum</i> subsp. <i>sativum</i> var. <i>sativum</i>	0	no increase	86	33349.64	4817.64
Dried peas	<i>Pisum sativum</i> subsp. <i>sativum</i> var. <i>sativum</i>	0	no increase	21	1044.27	386.18
Apricots	<i>Prunus armeniaca</i>	65	great	39	14456.18	1805.64
Cherries	<i>Prunus avium</i>	65	great	79	11016.45	3231.18
Plums	<i>Prunus domestica</i>	65	great	72	18680.82	5578.64
Almonds	<i>Prunus dulcis</i>	65	great	18	1360.723	224.45
Peaches and nectarines	<i>Prunus spp</i>	65	great	60	16863.64	6599.82
Pears	<i>Pyrus communis</i>	65	great	85	8103.18	15934.09
Blackcurrants and blueberries	<i>Ribes nigrum</i> and <i>Vaccinium myrtillus</i>	25	modest	80	2642.82	2174.64
Redcurrants	<i>Ribes rubrum</i>	25	modest	74	364	2809.45
Raspberries	<i>Rubus idaeus</i>	65	great	89	943.27	3652.73
Rye	<i>Secale cereale</i>	0	no increase	87	27067.82	3856.36
Eggplants	<i>Solanum melongena</i>	25	modest	73	461	18528.73
Sorghum	<i>Sorghom bicolor</i>	0	no increase	72	51877.82	2809.18
Triticale	<i>Triticosecale</i>	0	no increase	86	276058.55	4420.09
Total bread wheat	<i>Triticum aestivum</i>	0	no increase	89	4435083.45	5404.36

Total durum wheat	<i>Triticum durum</i>	0	no increase	68	376115.09	2423
Broad beans	<i>Vicia faba</i>	25	modest	85	73532.36	2291.45
Vine	<i>Vitis vinifera</i>	0	no increase	74	896643.36	4955.45
Maize (grain and seed)	<i>Zea mays</i>	0	no increase	89	1581688.27	7234.36
Maize (sweetcorn)	<i>Zea mays</i>	0	no increase	35	24360.27	3542.27

770

771

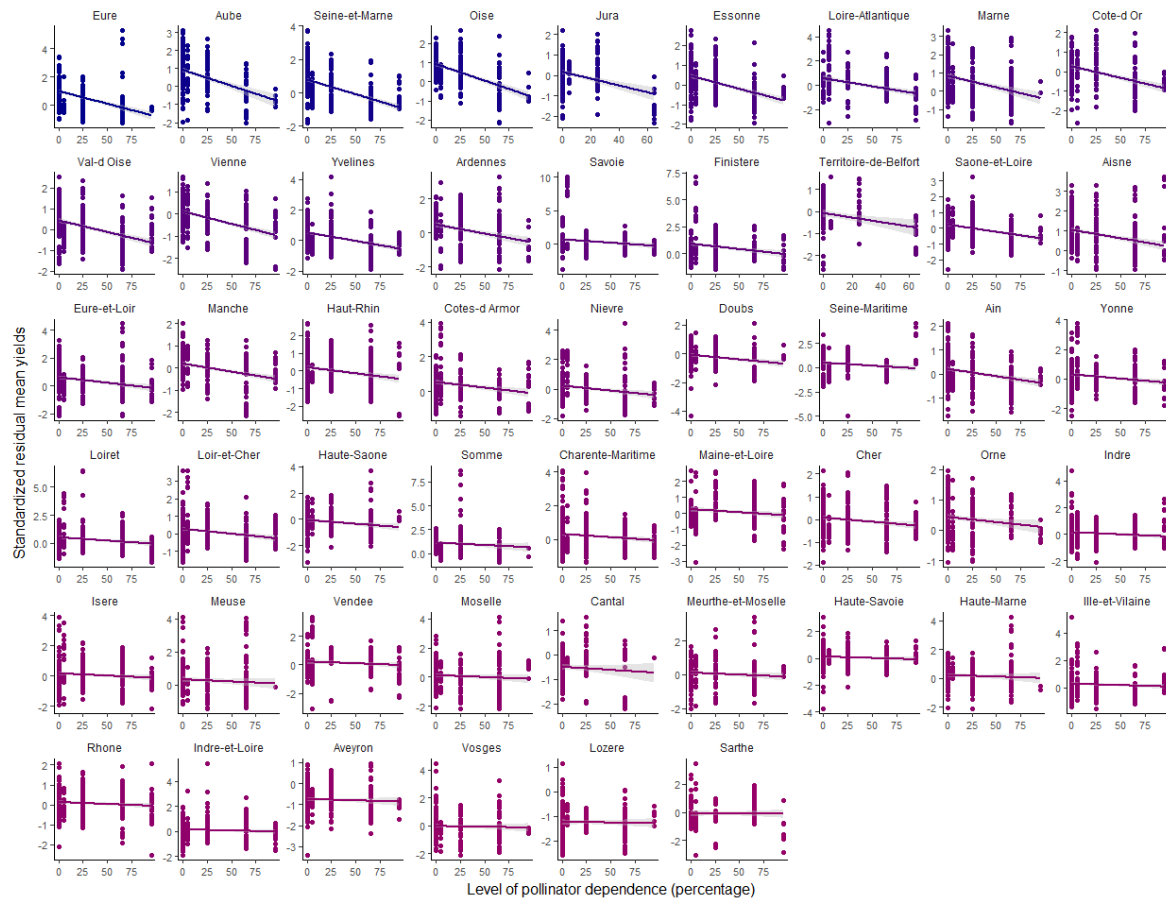
772 Fig. A1. PCA on the three High Nature Value components. The ordination diagram is plotted  
773 for axes 1 and 2 (a). The distribution of eigenvalues is shown in (b).



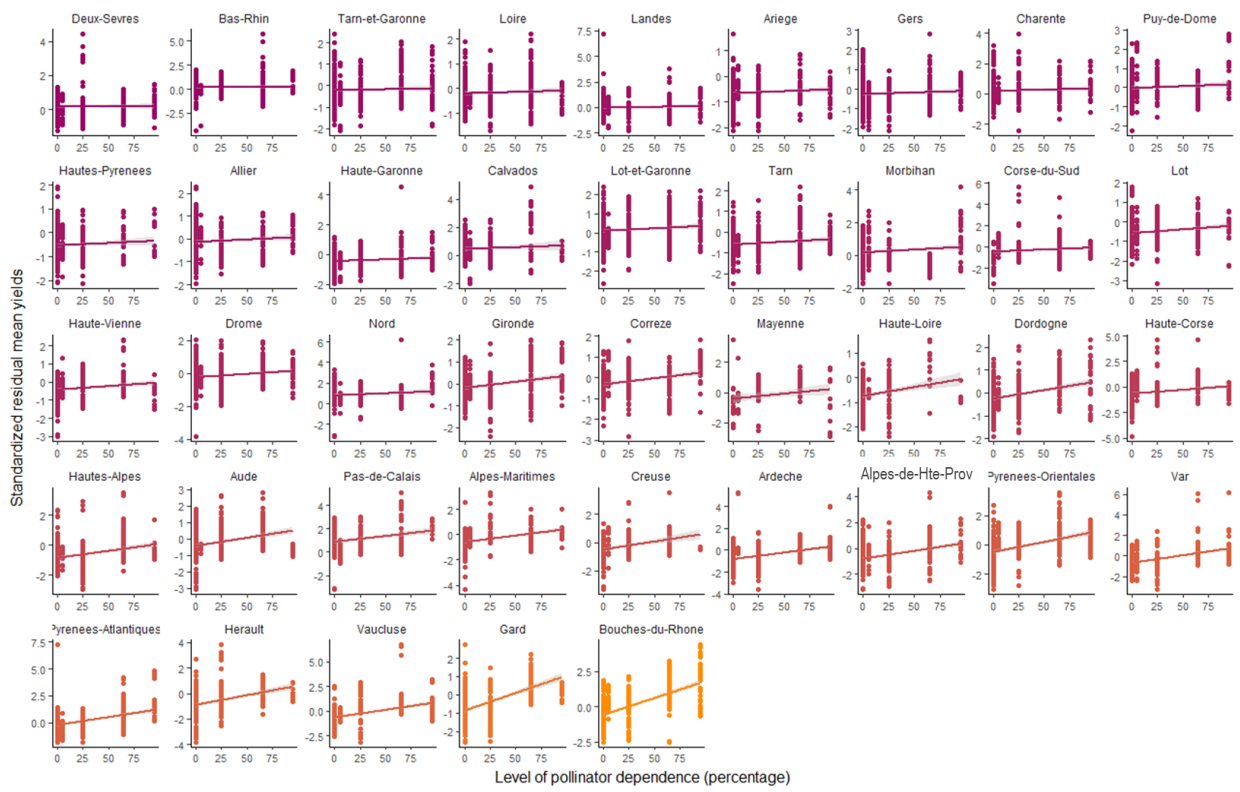
774

775

776 Fig. A2. Changes in standardized mean yield with increasing level of crop pollinator  
 777 dependence for each of the 95 departments. Dots represent crop yield and the line indicates  
 778 the estimate from the linear regression model described in the main text. Colors indicate the  
 779 sign and slope of the relationship between relative mean yield and the level of crop  
 780 pollinator dependence, as for Fig. 1.



781



782

783

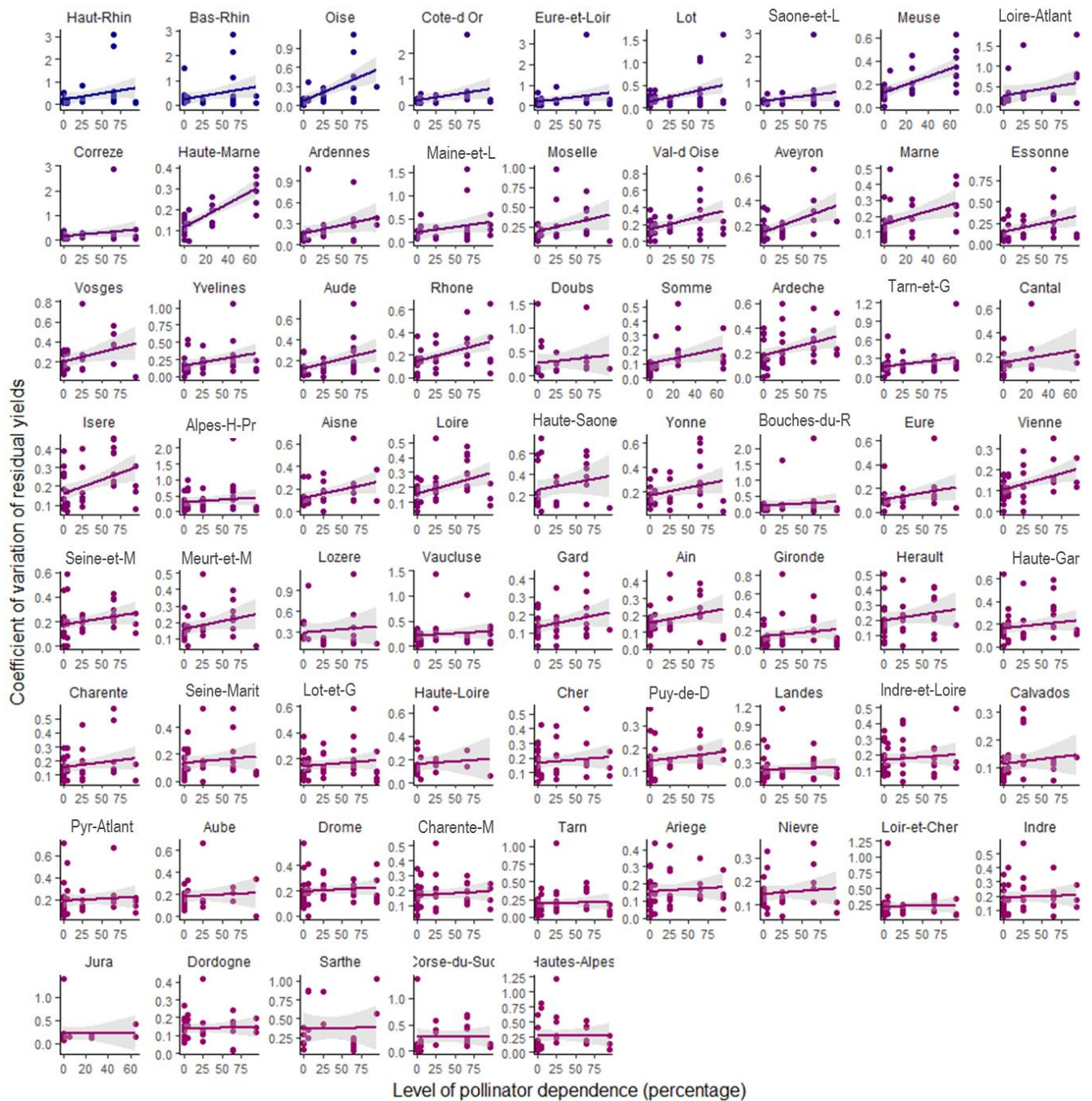
784

785

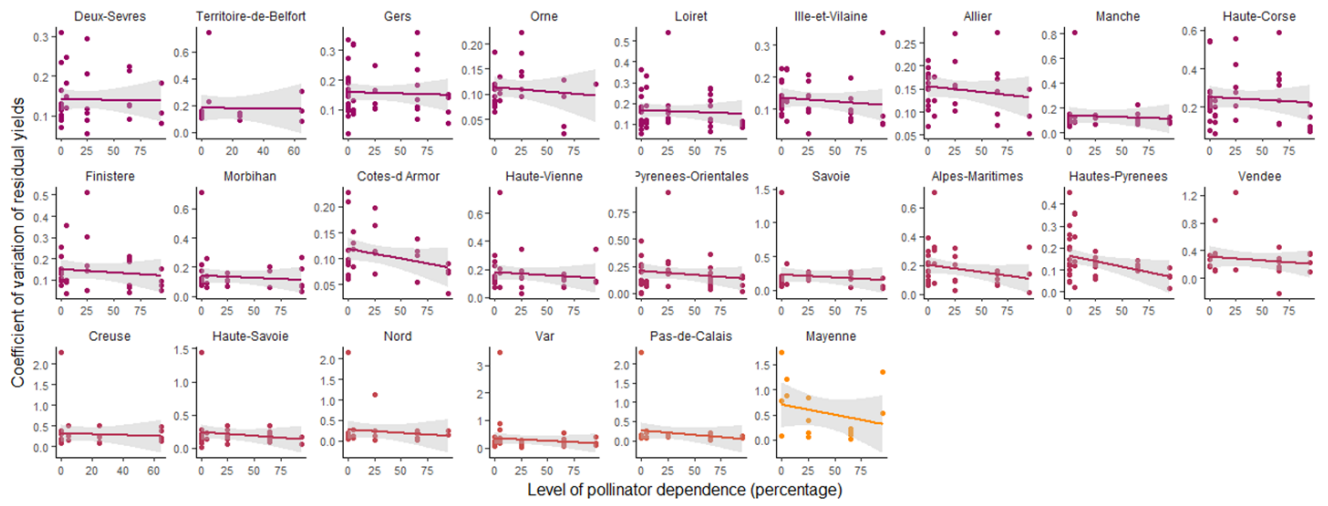
786



787 Fig. A3. Changes in yield stability with increasing level of crop pollinator dependence for each  
 788 of the 95 departments. Dots represent crop yield and the line indicates the estimate from the  
 789 linear regression model described in the main text. Colors indicate the slope of the  
 790 relationship between the coefficient of variation of the yield and the level of crop pollinator  
 791 dependence, as for Fig. 1.



792



793